

10804

OCT 15 2008

FULL SITE SURVEY

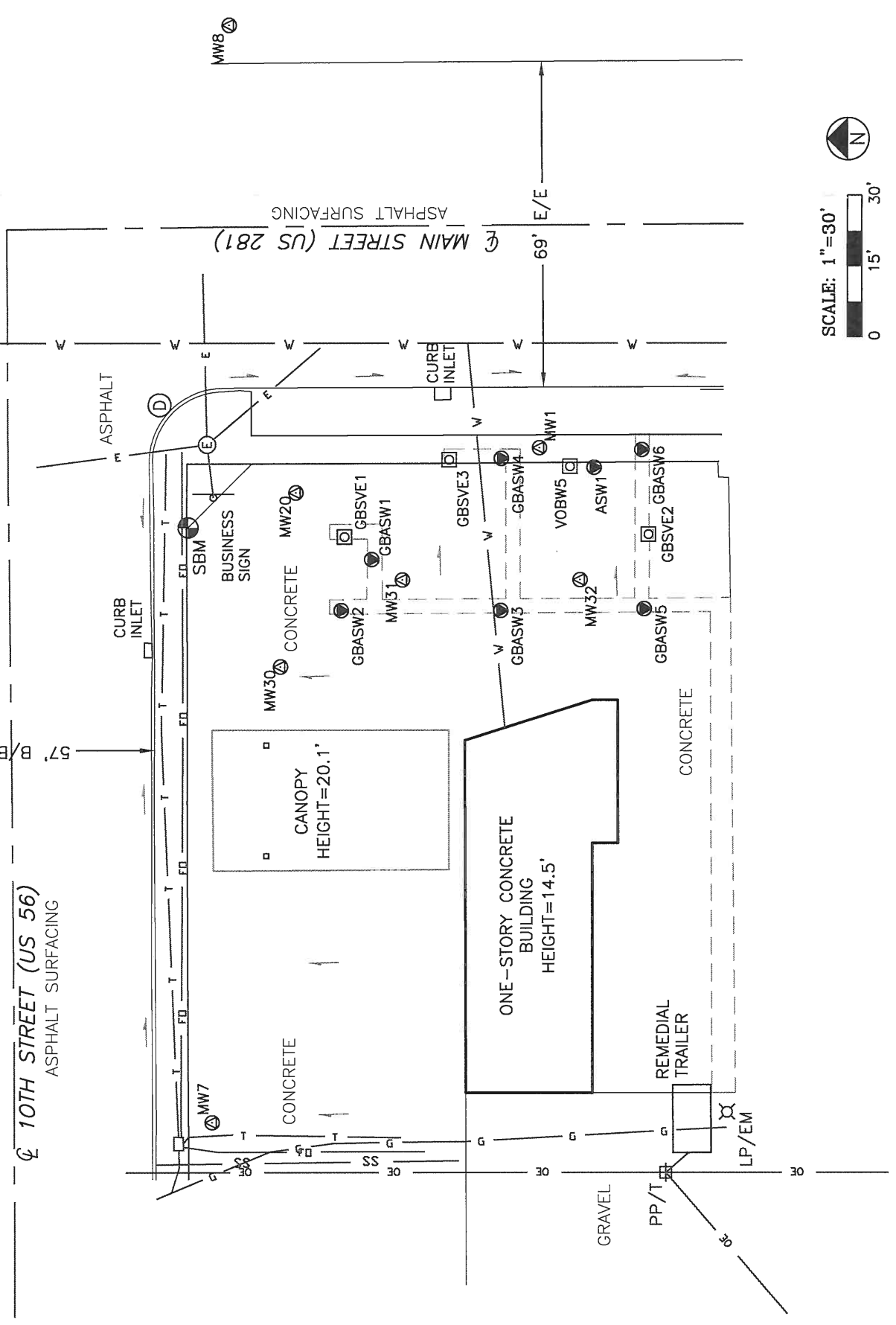
Golden Belt 66
City of Great Bend, Barton County, Kansas

Point	SE Cor. Sec. 33-119S-R13W	North Coordinate	East Coordinate	Distance		*Elev. Top of Rim or PK Nail	Elev. Top of PVC Pipe	Latitude North	Longitude West
				SE Cor. Sec. 33 West	North				
Well - M.W. - 1		9990.38	2313.58	4990.38	2686.42	1846.40			
Well - M.W. - 7		10059.16	2171.91	5059.16	2828.09	1846.40			
Well - M.W. - 8		10055.48	2402.37	5055.48	2597.63	1845.90			
Well - M.W. - 20		10041.50	2304.11	5041.50	2695.89	1846.50			
Well - M.W. - 30		10044.75	2267.57	5044.75	4579.91	1846.52	38.36119	98.76546	
Well - M.W. - 31		10019.18	2285.86	5019.18	2714.14	1846.76	38.36114	98.76540	
Well - M.W. - 32		9981.87	2285.89	4981.87	2714.11	1846.90	38.36010	98.76540	
Well - A.S.W. - 1		9978.92	2309.45	4978.92	2690.55	1846.15	38.36103	98.76529	
Well - V.O.B.W. - 2		9958.78	2315.12	4958.78	2684.88	1846.57	38.36097	98.76527	
Well - V.O.B.W. - 5		9983.54	2309.57	4983.54	2690.43	1846.56	38.36104	98.76529	
Well - GBASW - 1		10025.39	2290.09	5025.39	2709.91	1846.71	38.36116	98.76535	
Well - GBASW - 2		10031.98	2279.42	5031.98	2720.58	1846.82	38.36117	98.76539	
Well - GBASW - 3		9998.53	2279.42	4998.53	2720.58	1847.04	38.36108	98.76539	
Well - GBASW - 4		9998.37	2311.34	4998.37	2688.66	1846.35	38.36108	98.76528	
Well - GBASW - 5		9968.45	2279.77	4968.45	2720.23	1846.24	38.36100	98.76539	
Well - GBASW - 6		9968.92	2313.19	4968.92	2686.81	1846.43	38.36100	98.76527	
Well - GBASVE - 1		10031.13	2294.82	5031.13	2705.18	1846.67	38.31117	98.76534	
Well - GBASVE - 2		9967.52	2295.35	4967.52	2704.65	1846.81	38.36199	98.76534	
Well - GBASVE - 3		10009.30	2311.05	5009.30	2688.95	1846.30	38.36111	98.76528	
Site B.M.		10064.17	2296.81	5064.17	2703.19	B.M. Elev. = 1846.80			

Description: "□" Square cut on back of curb of business sign at the Northeast corner of Property.

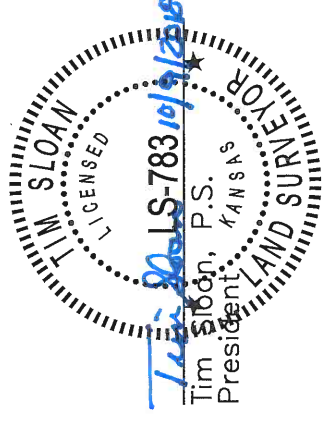
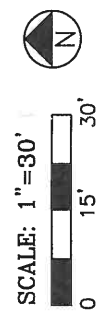
10TH STREET (US 56)
ASPHALT SURFACING

MAIN STREET (US 281)
ASPHALT SURFACING



LEGEND

- MW1 (circle with dot) MONITORING WELL LOCATION
- VOBW2 (square with dot) SOIL VAPOR OBSERVATION WELL
- GBSVE1 (square with dot) SOIL VAPOR EXTRACTION WELL-PROPOSED
- ASW1 (circle with dot) AIR SPARGE WELL
- GBASW1 (circle with dot) AIR SPARGE WELL-PROPOSED
- PP/T (square with dot) POWER POLE W/ TRANSFORMER
- LP/EM (square with dot) LIGHT POLE W/ ELECTRIC METER
- (E) (circle with dot) ELECTRIC MANHOLE
- (D) (circle with dot) STORM SEWER MANHOLE
- (B) (circle with dot) BUSINESS SIGN
- (circle with dot) SITE BENCHMARK
- (arrow) DRAINAGE DIRECTION
- (E/E) (line with arrow) EDGE TO EDGE OF ROAD
- (B/B) (line with arrow) BACK TO BACK OF CURB
- (V) (line) WATER LINE
- (G) (line) GAS LINE
- (OE) (line) OVERHEAD ELECTRIC LINE
- (E) (line) UNDERGROUND ELECTRIC LINE
- (T) (line) UNDERGROUND TELEPHONE LINE
- (FB) (line) UNDERGROUND FIBER OPTIC LINE
- (SS) (line) SANITARY SEWER LINE
- (---) TRENCH LINE



SMH CONSULTANTS

2017 Vanesta Place, Suite 110 • Manhattan, Kansas 66503
(785) 776-0541 • FAX 776-9760 • Email: tim@smhconsultants.com
Project #1809MN1241 DD #112