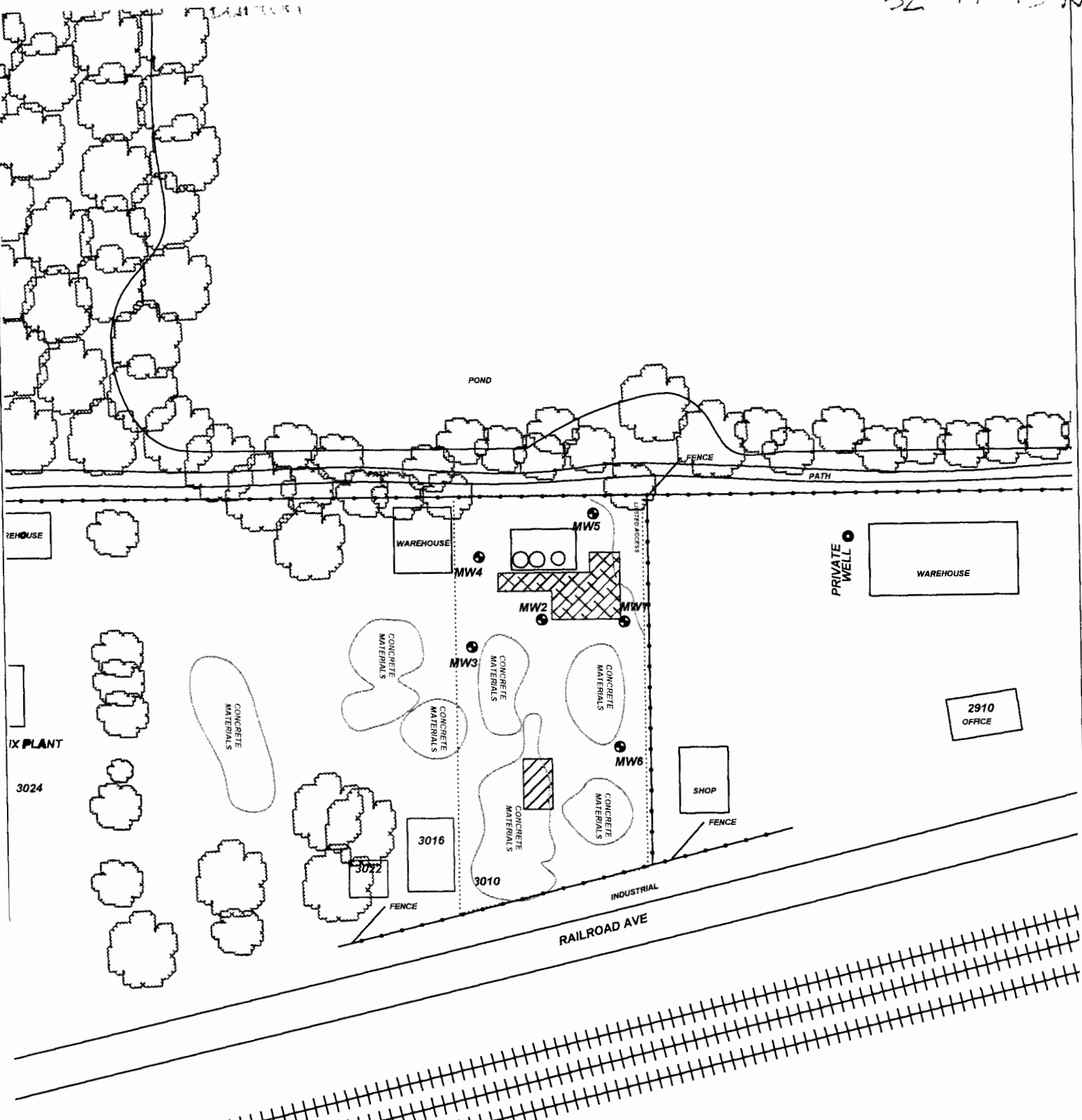


MW1

Revised 7/10/2015

32-19-13-N



PROJECT: EARL WESTHOFF (FORMER AMES OIL)

ADDRESS: 3010 RAILROAD AVE

LOCATION: GREAT BEND, KS

DRAWN BY: C. ROE DATE: 5/14/18

REVISED BY: C. ROE DATE: 4/1/22

AEI JOB #: TM236 KDHE JOB #: A6-005-40222

TITLE: **FIGURE 2.1**
AREA BASE MAP
350' RADIUS

ASSOCIATED ENVIRONMENTAL INC.

- LEGEND:
- = (3) ON-ROAD/OFF-ROAD DIESEL ASTS
 - = FORMER ASTS
 - = EXCAVATION EXTENTS
 - = PRIVATE WELL
 - = MONITORING WELL
 - = SUBJECT PROPERTY

SCALE: 1" = 100'

0 50 100

NOTES: *INDICATED BORING FOR UNSATURATED HYDROLOGIC ZONE SAMPLE