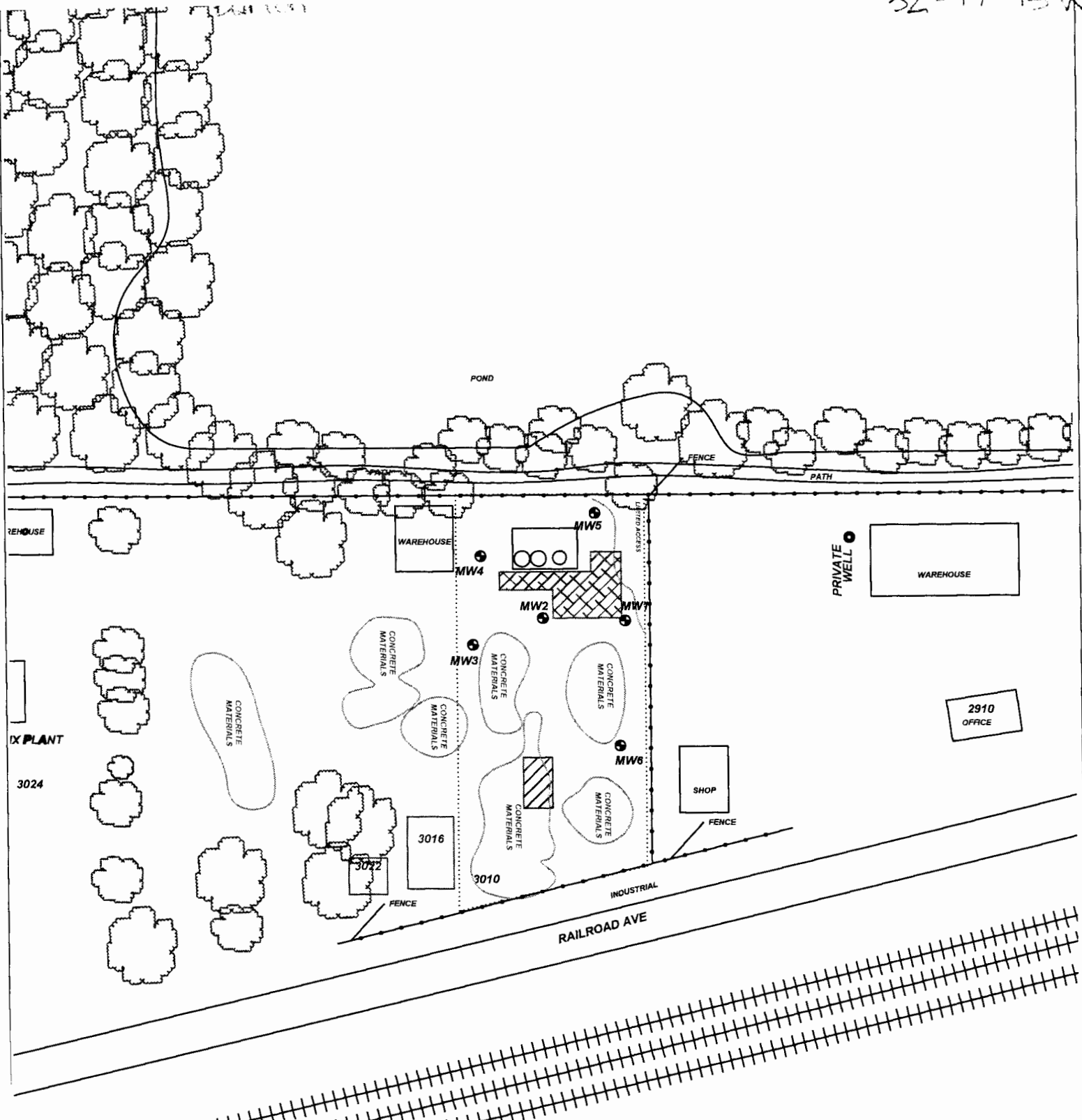


MW5

Revised 7/10/2015



PROJECT: **EARL WESTHOFF (FORMER AMES OIL)**

ADDRESS: **3010 RAILROAD AVE**

LOCATION: **GREAT BEND, KS**

DRAWN BY: **C. ROE** DATE: **5/14/18**

REVISED BY: **C. ROE** DATE: **4/1/22**

AEI JOB #: **TM236** KDHE JOB #: **A6-005-40222**

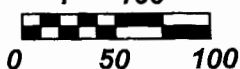
TITLE: **FIGURE 2.1
AREA BASE MAP
350' RADIUS**

AEI **ASSOCIATED
ENVIRONMENTAL
INC.**

LEGEND:

- = (3) ON-ROAD/OFF-ROAD DIESEL ASTS
- = FORMER ASTS
- = EXCAVATION EXTENTS
- = PRIVATE WELL
- = MONITORING WELL
- = SUBJECT PROPERTY

SCALE: **1" = 100'**



NOTES: *INDICATED BORING FOR UNSATURATED HYDROLOGIC ZONE SAMPLE