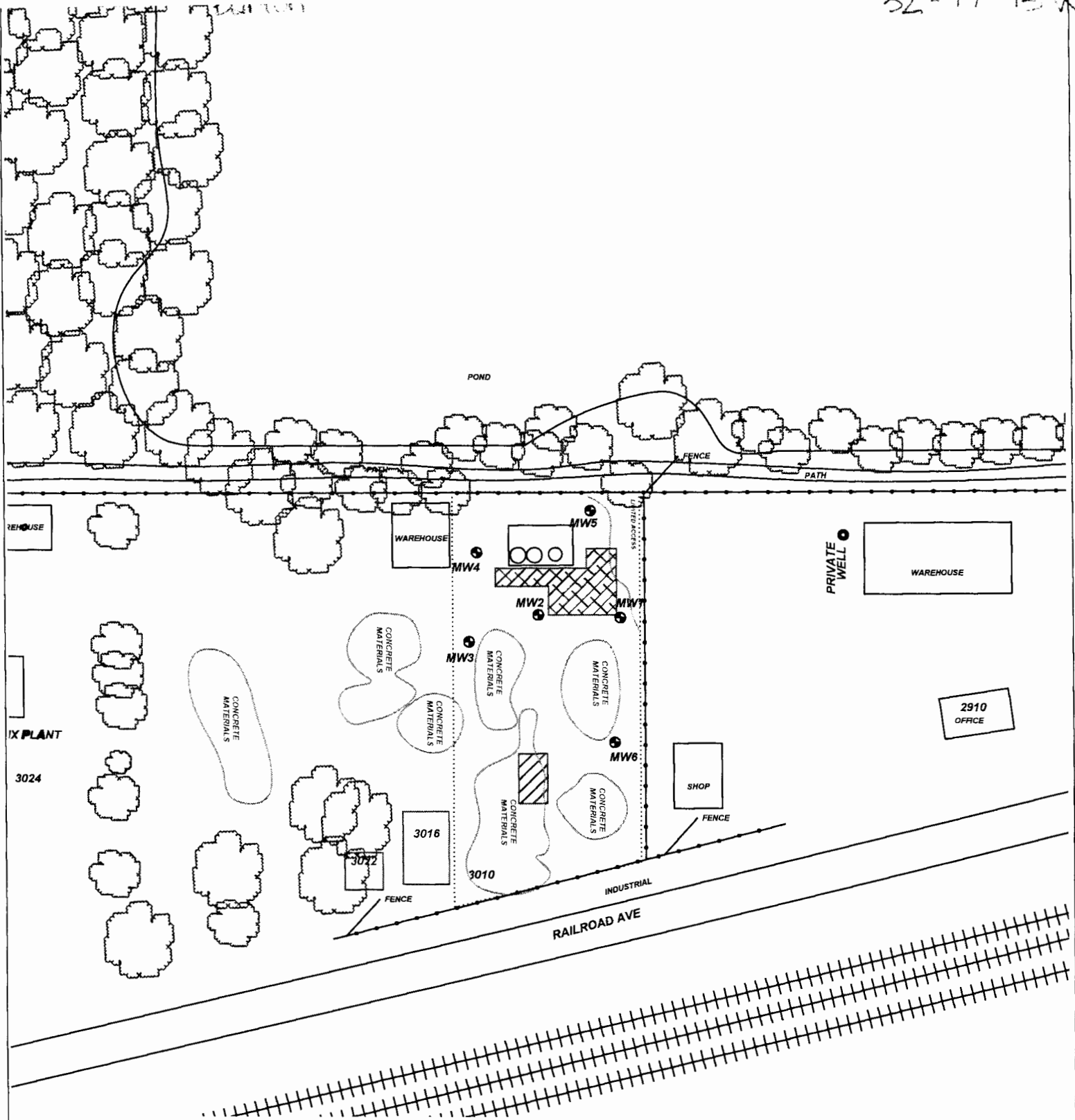


MW6

Revised 7/10/2015



PROJECT: EARL WESTHOFF (FORMER AMES OIL)		TITLE: FIGURE 2.1 AREA BASE MAP 350' RADIUS	
ADDRESS: 3010 RAILROAD AVE			
LOCATION: GREAT BEND, KS			
DRAWN BY: C. ROE	DATE: 5/14/18		LEGEND: = (3) ON-ROAD/OFF-ROAD DIESEL ASTS = FORMER ASTS = EXCAVATION EXTENTS = PRIVATE WELL = MONITORING WELL = SUBJECT PROPERTY
REVISED BY: C. ROE	DATE: 4/1/22		
AEI JOB #: TM236	KDHE JOB #: A6-005-40222		
SCALE: 1" = 100'		NOTES: *INDICATED BORING FOR UNSATURATED HYDROLOGIC ZONE SAMPLE	

