

WATER WELL RECORD

Form WWC-5

Division of Water Resources App. No.

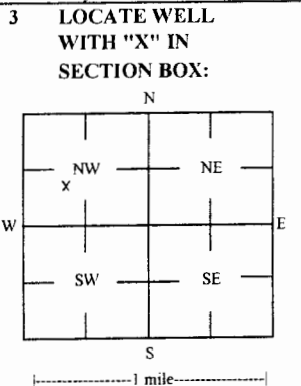
Well ID

MW3

Original Record Correction Change in Well Ust

1 LOCATION OF WATER WELL: County McPherson Fraction SE 1/4 NE 1/4 SW 1/4 NW 1/4 Section Number 26 Township Number T 19 S Range Number R 3 E X W

2 WELL OWNER: Last Name: Higgins First: Patrick Street or Rural Address where well is located (if unknown, distance and direction from nearest town or intersection): 2201 E Kansas Ave., McPherson, KS 67460



3 LOCATE WELL WITH 'X' IN SECTION BOX: N W E S 4 DEPTH OF COMPLETED WELL: 39 ft Depth(s) Groundwater Encountered: 1) 39 ft 2) ft 3) ft, or 4) Dry Well WELL'S STATIC WATER LEVEL: 29.55 ft

5 Latitude: 38.37157 (decimal degrees) Longitude: 97.62632 (decimal degrees) Horizontal Datum: X WGS 84 NAD 83 NAD 27 Source for Latitude/Longitude: X Land Survey Topographic Map Online Mapper

6 Elevation 1497.96 ft Ground Level X TOC Source X Land Survey GPS Topographic Map Other

7 WELL WATER TO BE USED AS: 1 Domestic: Household Lawn & Garden Livestock Irrigation Feedlot Industrial 5 Public Water Supply: well ID 6 Dewatering: how many wells? 7 Aquifer Recharge: well ID 8 X Monitoring: well ID MW3 9 Environmental Remediation: well ID Air Sparge Soil Vapor Extractor Recovery Injection 10 Oil Field Water Supply: lease 11 Test Hole: well ID Cased Uncased Geotechnical 12 Geothermal: How many bores? a) Closed Loop Horizontal Vertical b) Open Loop Surface Discharge Inj. of Water Other (specify):

Was a chemical/bacteriological sample submitted to KDHE? Yes No X No If yes, date sample was submitted: Water well disinfected? Yes No X No

8 TYPE OF CASING USED: Steel PVC Other CASING JOINTS: Glued Clamped Welded X Threaded Casing diameter 2 in. to 24 ft, Diameter in. to ft, Diameter in. to ft, Casing height above land surface -0.24 in. Weight lbs./ft. Well thickness or gauge No TYPE OF SCREEN OR PERFORATION MATERIAL: Steel Stainless Steel Fiberglass PVC Other (Specify) Brass Galvanized Steel Concrete tile None used (open hole) SCREEN OR PERFORATION OPENINGS ARE: Continuous Slot X Mill Slot Gauze Wrapped Torch Cut Drilled Holes Other (Specify) Louvered Shutter Key Punched Wire Wrapped Saw Cut None (Open Hole) SCREEN-PERFORATED INTERVALS: From 24 ft. to 39 ft. From ft. to ft. From ft. to ft. From ft. to ft. GRAVEL PACK INTERVALS: From 22 ft. to 39 ft. From ft. to ft. From ft. to ft. From ft. to ft.

9 GROUT MATERIAL: Neat cement Cement grout X Bentonite X Other Concrete: 0-1' Grout intervals: From 1 ft. to 22 ft. From ft. to ft. From ft. to ft. From ft. to ft.

Nearest source of possible contamination: Septic Tank Lateral Lines Pit Privy Livestock Pens Insecticide Storage Sewer Lines Cess Pool Sewage Lagoon X Fuel Storage Abandoned Water Well Watertight Sewer Lines Seepage Pit Feedyard Fertilizer Storage Oil Well / Gas Well Other (Specify) Direction from well? South Distance from well? ~20 ft

Table with columns: 10 FROM, TO, LITHOLOGIC LOG, FROM, TO, LITHO. LOG (cont.) or PLUGGING INTERVALS. Rows: 0-20 Concrete: Silty clay, 20-24.5 Sandy clay, 24.5-28.5 Clayey sand, 28.5-32 Clayey sand with gravel, 32-39 Clayey sand

Notes: KDHE ID: Midway Oil Co. (former); U5-059-14886

11 CONTRACTOR'S OR LANDOWNER'S CERTIFICATION: This water well was X constructed, reconstructed, or plugged under my jurisdiction and was completed on (mo-day-year) 8/8/17 and this record is true to the best of my knowledge and belief, Kansas Water Well Contractor's License No 757 This Water Well Record was completed on (mo-day-year) 10/5/17 under the business name of Larsen & Associates, Inc. Signature

# DENNIS L HANDKE

1820 NW 59th Terrace  
TOPEKA, KANSAS 66618  
785-286-4047 Home  
785-286-1990 Fax

Jessica Chapman  
Larsen & Associates  
1311 E. 25<sup>th</sup> Street, Suite B  
Lawrence, Kansas, 66046

September 25, 2017  
Revised October 6, 2017

RE: Monitor Well Elevation Survey  
2201 E. Kansas Ave., McPherson, Kansas

Proj. 17-00DD  
Midway Oil Co. (formerly)  
U5-059-14886

Bench Mark: Chisled Sq. on sidewalk at the SE corner of the building.

Elev: 1499.32      North 3457      West 4163      (from SE Cor. Sec. 26-19-3W)

MW-1	rim	1499.02	North	3383	SE1/4,NE1/4,SW1/4,NW1/4
	top pipe	1498.62	West	4169	Lat= 38.37155 Long = 97.62608
MW-2	rim	1499.27	North	3379	SE1/4,NE1/4,SW1/4,NW1/4
	top pipe	1499.04	West	4119	Lat= 38.37154 Long = 97.62591
MW-3	rim	1498.20	North	3392	SE1/4,NE1/4,SW1/4,NW1/4
	top pipe	1497.96	West	4237	Lat= 38.37157 Long = 97.62632
MW-4	rim	1497.36	North	3553	SE1/4,NE1/4,SW1/4,NW1/4
	top pipe	1497.03	West	4124	Lat= 38.37202 Long = 97.62593
MW-5	rim	1499.84	North	3299	NE1/4,SE1/4,SW1/4,NW1/4
	top pipe	1499.45	West	4169	Lat= 38.37132 Long = 97.62608
MW-6	rim	1500.16	North	3427	SE1/4,NE1/4,SW1/4,NW1/4
	top pipe	1499.62	West	4091	Lat= 38.37167 Long = 97.62581
MW-7	rim	1498.33	North	3297	NE1/4,NE1/4,SW1/4,NW1/4
	top pipe	1498.00	West	4280	Lat= 38.37131 Long = 97.62647
MW-8	rim	1497.12	North	3436	SW1/4,NE1/4,SW1/4,NW1/4
	top pipe	1496.81	West	4294	Lat= 38.37169 Long = 97.62652
MW-9	rim	1499.43	North	3236	NE1/4,SE1/4,SW1/4,NW1/4
	top pipe	1499.08	West	4239	Lat= 38.37114 Long = 97.62633

Lat & Long derived existing McPherson South 7.5' quad map. WGS 84.

Elevation established from City of McPherson BM#12, Proj CIP-0014, NAD 83.

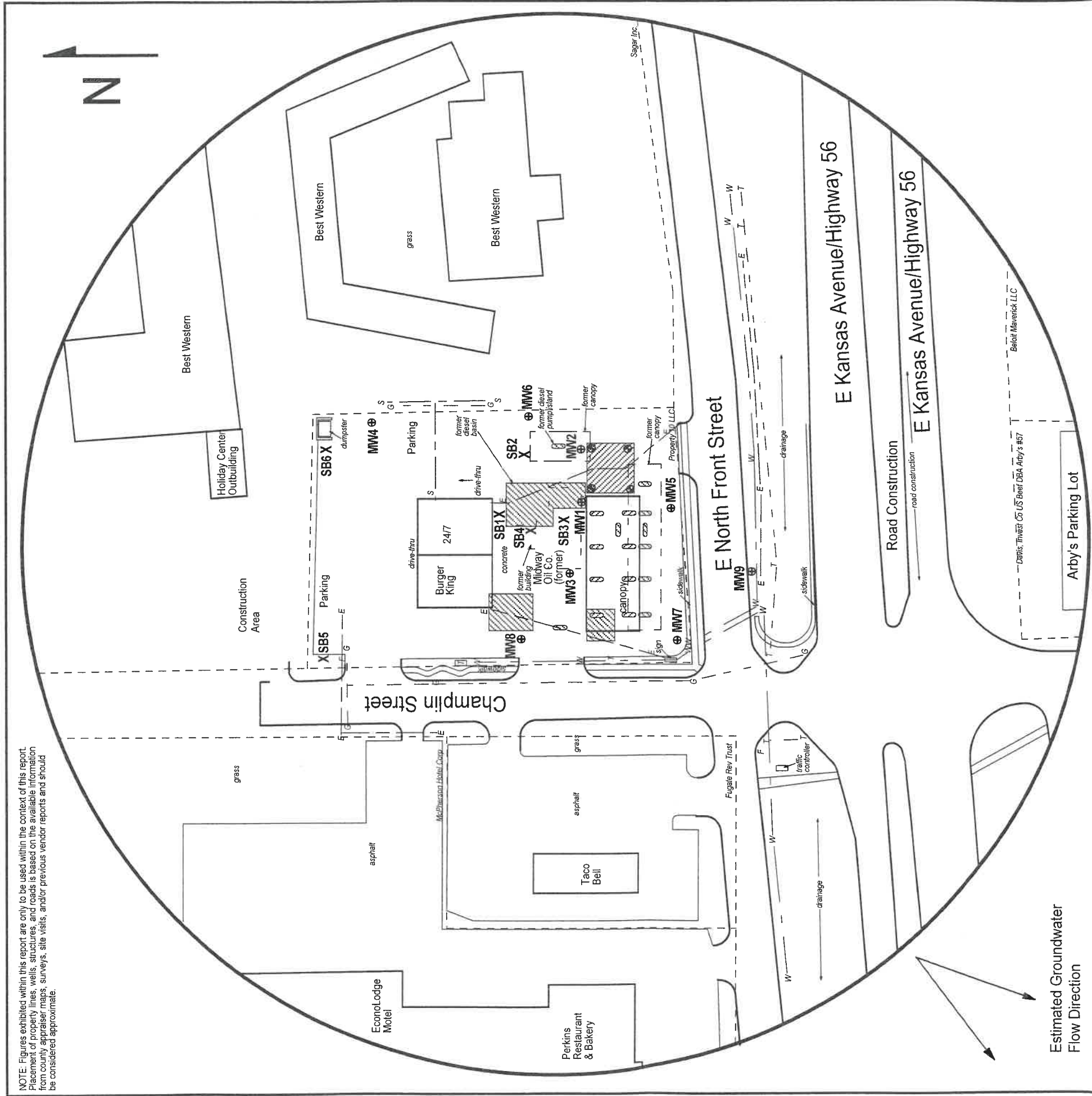
If you have any questions, please feel free to call me. Thank you for the opportunity to be of service to you.

October 6, 2017  
Dennis L Handke RLS

*Dennis L Handke*

RECEIVED  
OCT 16 2017  
BUREAU OF WATER

NOTE: Figures exhibited within this report are only to be used within the context of this report. Placement of property lines, wells, structures, and roads is based on the available information from county appraiser maps, surveys, site visits, and/or previous vendor reports and should be considered approximate.



**FIGURE 2.2 - 500 FT RADIUS AREA BASE MAP**

**LEGEND:**

- Approximate Location of Former UST Basin, Product Line and Pump Islands
- Approximate Location of Active UST Basin and Pump Islands
- Approximate Location of Property Line
- Observing Well
- Monitoring Well (Installed 8/7-10/17)
- Soil Boring (Drilled 8/9-11/17)
- Fire Hydrant
- Gas Lines (2 - 6 ft BGS)
- Electric Lines (2 - 6 ft BGS)
- Overhead Lines (25-40 ft high)
- Telephone Lines (2 - 6 ft BGS)
- Water Lines (2 - 6 ft BGS)

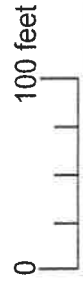
NOTE: Location of former and active product lines is unknown. NOTE: Utility depths, heights and locations are approximate.

**PROJECT:**

Midway Oil Co. (former)  
 2201 East Kansas Ave.  
 McPherson, KS  
 KDHE ID: U5-059-14886  
 Date: 8/11/17



1311 E 25th St., Suite B (785) 841-8707 office  
 Lawrence, KS 66046 (785) 865-4282 fax



RECEIVED

OCT 16 2017

BUREAU OF WATER