



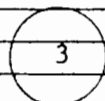
BIG BEND GMD#5-KGS  
WATER QUALITY  
OBSERVATION WELL  
NETWORK

SITE NUMBER : 18 (KP3)  
SITE LOCATION: NW NW NW

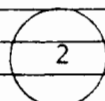
LEGAL LOCATION: 7-21-11W  
COUNTY : STAFFORD

WELL LOG

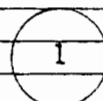
FROM	TO	LITHOLOGIC LOG	OWNER: SCHLOCKTERNEIER
0	1	topsoil	
1	4	white clay and silt with fine quartz sand	
4	7	yellow clay	
7	15	pinkish-tan silty clay with fine qtz. arkosic sand; streaks of yellow sandy clay	
15	20	sandy clay, light tan; fine grained qtz. arkosic sand; trace of gravel at 20'	
20	30	pinkish tan sandy clay; trace of caliche	
30	31	qtz. arkosic sand, fine to med. grained	
31	34	tan sandy clay with caliche	
34	50	qtz. arkosic sand and gravel, fine to coarse, clean; cobbles in lower 10'	
50	55	tan sandy clay	
55	60	pinkish grey sandy clay; trace of grey sandy silt, fine grained	
60	65	fine gravel; coarse sand, qtz. arkosic; trace of blue sandy clay; small pebbles	
65	95	stringers of blue clay in coarse qtz. arkosic fine to coarse gravel	
95	117	fine to coarse qtz. arkosic sand; blue clay; fine gravel	
117	122	blue-green sandy clay and brown to greenish brown clay	
122	125	grey clay	
125	135	grey and tan clay lenses, some white and orange clay	
135	149	gravel	
149	152	brown clay and tan clay	
152	164	fine to coarse sand and fine gravel	
164	168	clay	
168	170	sand and gravel (same as 152' to 164')	
170	192	tan clay with gravel streaks	
192	200	fine to coarse sand and fine to med. gravel	
200	214	same with cobbles; trace of fine sandstone	
214	236	siltstone, red--PERMIAN	



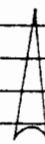
TD=50'  
45'/5'



TD=202'  
197'/5'



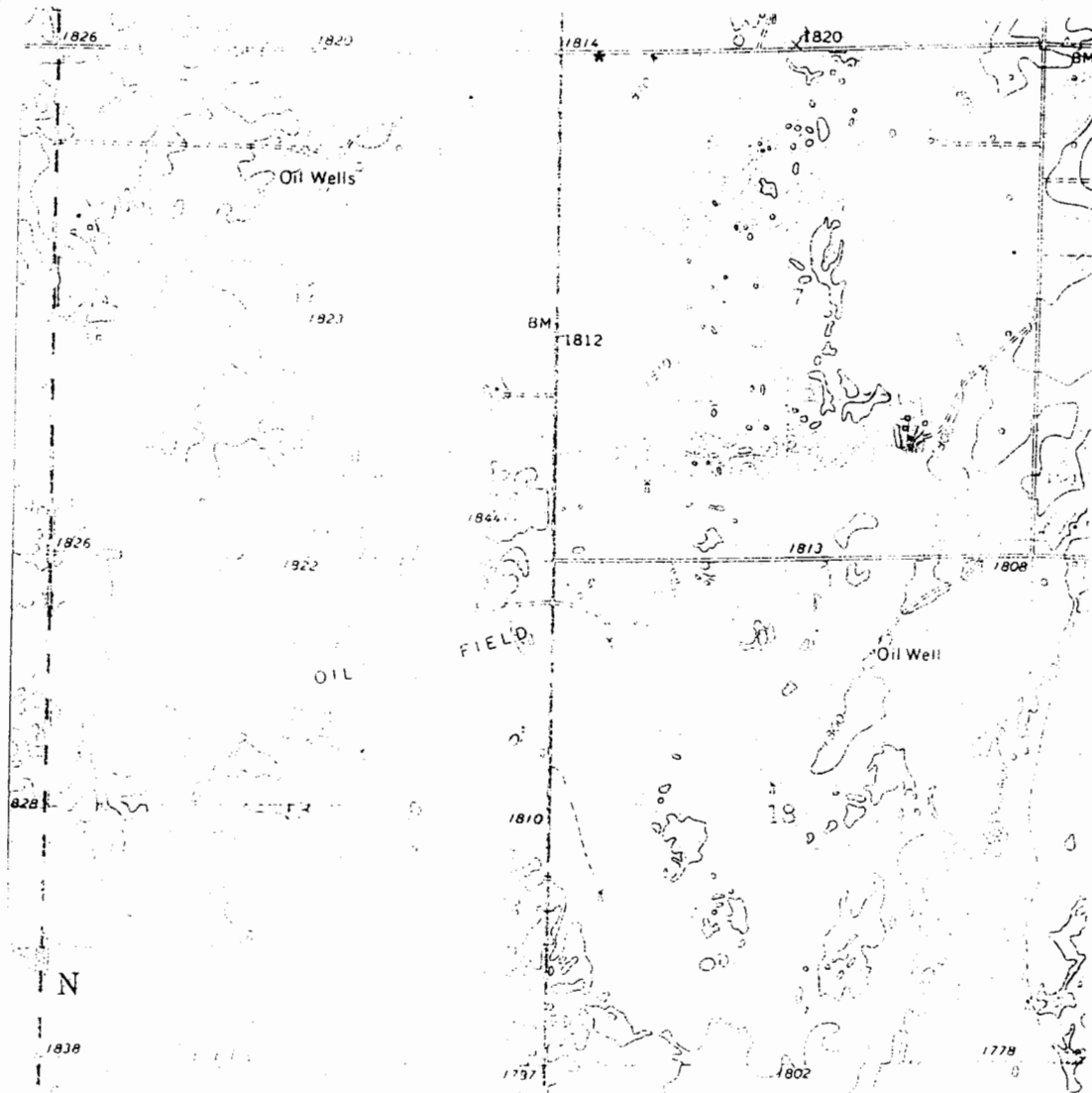
TD=236'  
231'/5'



N

SITE NUMBER : 18(KP3)  
SITE LOCATION : NW NW NW  
LEGAL LOCATION: SEC7 T21S R11W  
COUNTY : STAFFORD

LANDOWNER: ED SCHLOCKTERMEIER  
ADDRESS : RURAL ROUTE  
ELLINWOOD, KANSAS 67526  
PHONE NO.: 316-564-2184



WELL LOCATION \*