

County: McPherson Fraction: NW NW NE NE Sec. 27 T. 21 S R. 2 W

CORRECTION(S) to WATER WELL COMPLETION RECORD Form WWC-5 (to rectify lacking or incorrect information)

Owner: Mid Kansas Coop MW 26

If location corrected, was listed as:

Location changed to:

Section-Township-Range: _____

Fraction (¼ calls): _____

Other changes: Initial statements: Monitoring well name changed from MW-6 to MW-26

Changed to: _____

Comments: _____

Verification method: Per PPB enviro-solutions correction sheet 05-16-2022

Initials: SH Date: 11-21-2022

Submitted by: Kansas Geological Survey, Data Resources Library, 1930 Constant Ave., Lawrence, KS 66047-3724
 Kansas Dept. of Health & Environment, Bureau of Water, 1000 SW Jackson, Suite 420, Topeka, KS 66612-1367



Project Name: Mid Kansas Coop, Moundridge

Date: 16-May-22

Project Staff: W. Totten, D. Lassiter

Others present:



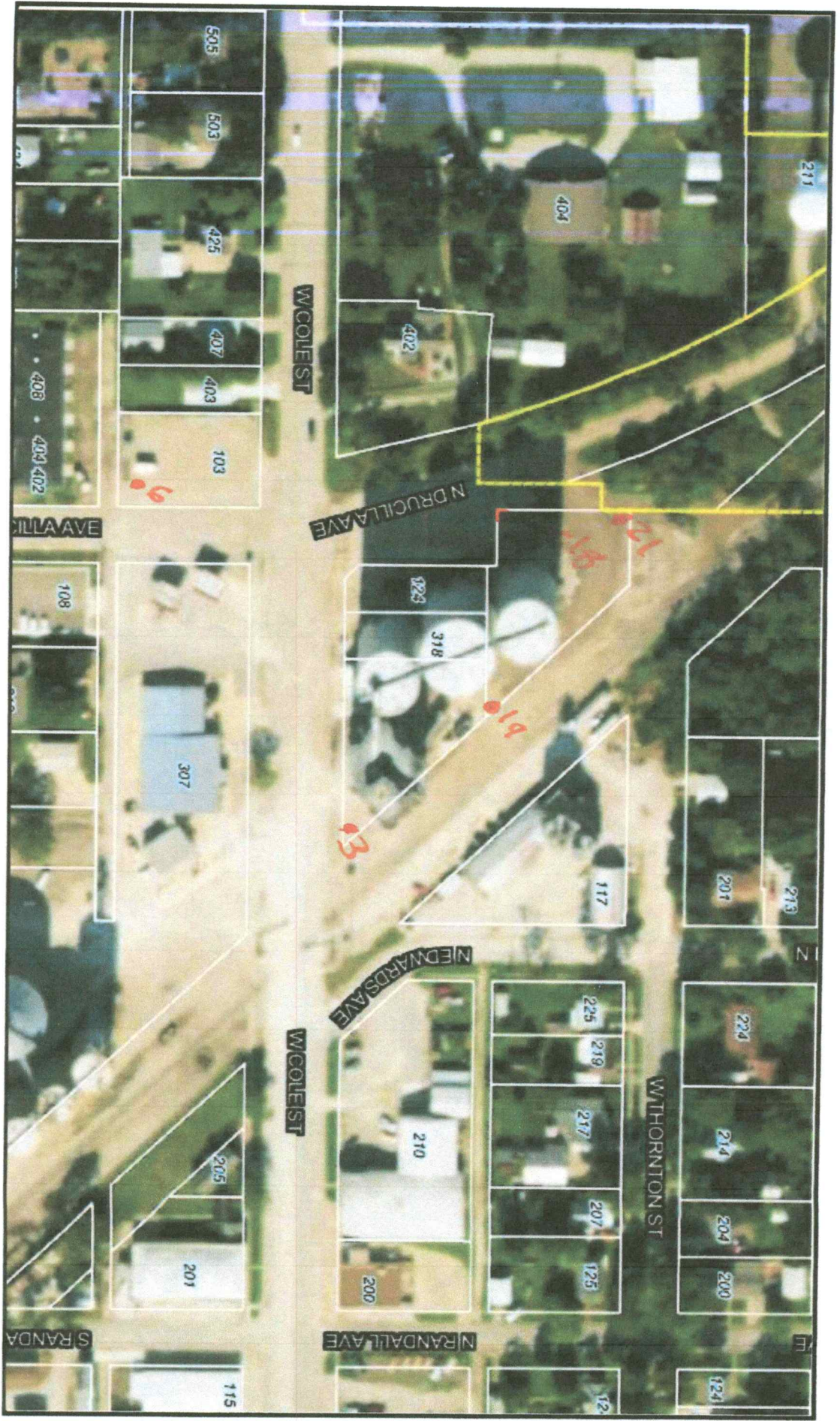
NOTES

Well ID	SWL Initial	TD	Development Volume	SWL Final	Well Tag
MW-322	16 ft.	30	70 gallons	17.5 ft.	0547231
MW-526	15 ft.	30	85 gallons	17 ft.	0547672
MW-18	25 16 ft.	30	70 gallons	16 ft.	0547674
MW-19	13 26 ft.	30	8 gallons	30 ft.	0547669
MW-21	24 16 ft.	30	70 gallons	19 ft.	0547627

W. Totten

willerson

22-21-2w



Moundridge

6/1/2022