

WATER WELL RECORD Form WWC-5

Division of Water Resources App. No.

MW-9

Original Record Correction Change in Well Use

1 LOCATION OF WATER WELL: County: Sedgwick Fraction NW 1/4 SW 1/4 SW 1/4 SW 1/4 Section Number 25 Township Number T 27 S Range Number R 1 E W

2 WELL OWNER: Last Name: Business: Foley Industries, Inc. Address: 1550 S. West Street City: Wichita State: KS ZIP: 67213 Street or Rural Address where well is located: 1550 S. West Street, Wichita, Ks.

3 LOCATE WELL WITH 'X' IN SECTION BOX: N W E S 1 mile. 4 DEPTH OF COMPLETED WELL: 21 ft. 5 Latitude: 37.66694 Longitude: -97.38894 6 Elevation: 1300.39 ft.

7 WELL WATER TO BE USED AS: 1. Domestic: 2. Irrigation: 3. Feedlot: 4. Industrial: 5. Public Water Supply: 6. Dewatering: 7. Aquifer Recharge: 8. Monitoring: 9. Environmental Remediation: 10. Oil Field Water Supply: 11. Test Hole: 12. Geothermal: 13. Other

Was a chemical/bacteriological sample submitted to KDHE? Water well disinfected?

8 TYPE OF CASING USED: Steel PVC Other CASING JOINTS: Glued Clamped Welded Threaded Casing diameter: 2 in. to 11 ft. TYPE OF SCREEN OR PERFORATION MATERIAL: Steel Stainless Steel Fiberglass PVC Brass Galvanized Steel Concrete tile None used

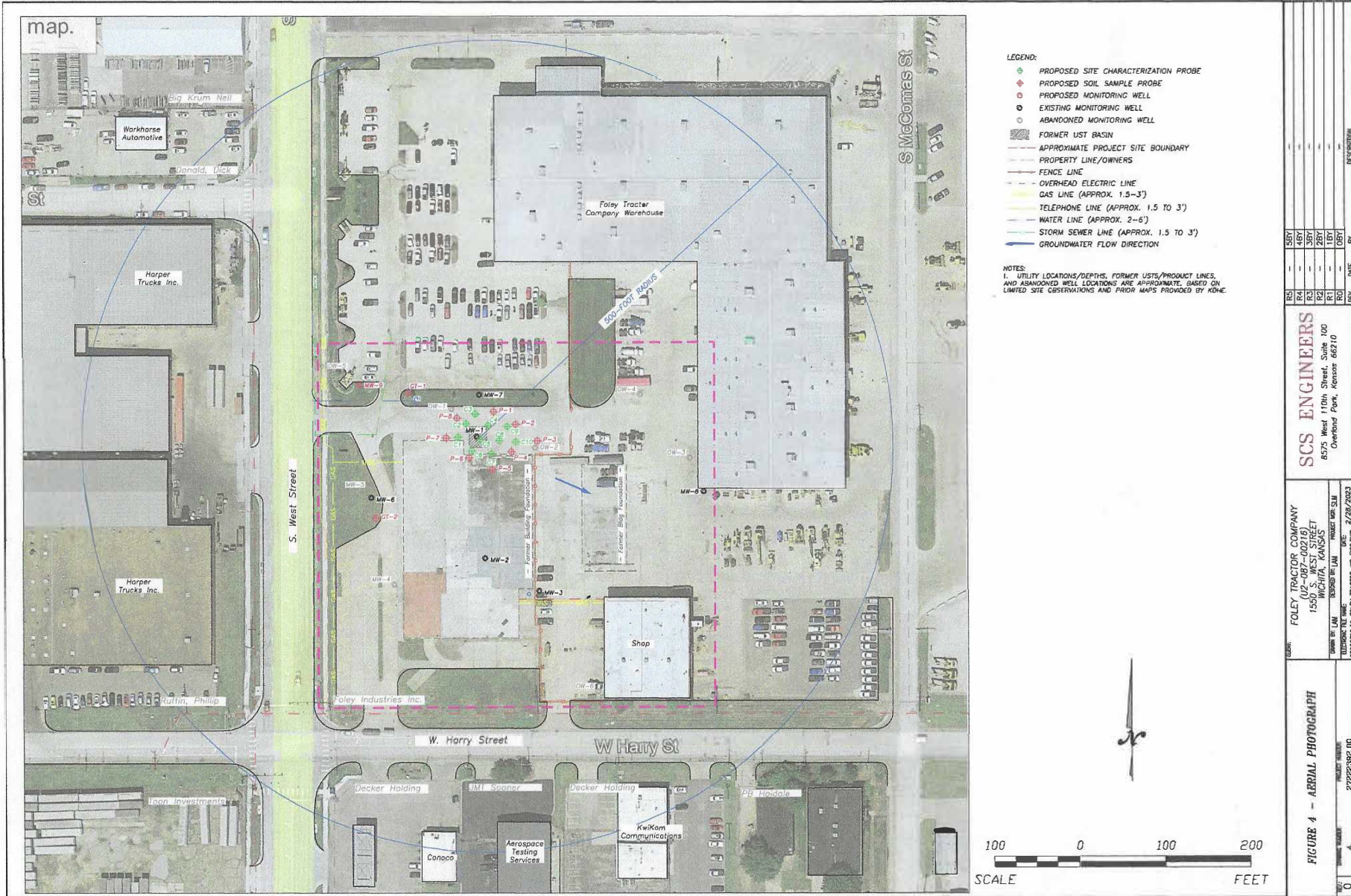
9 GROUT MATERIAL: Neat cement Cement grout Bentonite Other cement pad Grout Intervals: From 1 ft. to 9 ft.

Nearest source of possible contamination: Septic Tank Lateral Lines Pit Privy Livestock Pens Insecticide Storage Sewer Lines Cess Pool Sewage Lagoon Fuel Storage Abandoned Water Well Watertight Sewer Lines Seepage Pit Feedyard Fertilizer Storage Oil Well/Gas Well

Table with columns: 10 FROM, TO, LITHOLOGIC LOG, FROM, TO, LITHO. LOG (cont.) or PLUGGING INTERVALS. Rows include Topsoil, Sandy Clay, Clay, brown to gray, lean, moist, some fine, Clayey Sand, brown, moist, Sand, brown, fine to coarse, saturated @, Sand, brown, coarse, saturated.

11 CONTRACTOR'S OR LANDOWNER'S CERTIFICATION: This water well was constructed, reconstructed, or plugged under my jurisdiction and was completed on (mo-day-year) 6-30-2023 and this record is true to the best of my knowledge and belief.

T 27 R.1W Sec.25 Sedgwick County



- LEGEND:**
- PROPOSED SITE CHARACTERIZATION PROBE
 - ◇ PROPOSED SOIL SAMPLE PROBE
 - PROPOSED MONITORING WELL
 - EXISTING MONITORING WELL
 - ABANDONED MONITORING WELL
 - ▨ FORMER UST BASIN
 - - - APPROXIMATE PROJECT SITE BOUNDARY
 - - - PROPERTY LINE/OWNERS
 - - - FENCE LINE
 - - - OVERHEAD ELECTRIC LINE
 - - - GAS LINE (APPROX. 1.5-3')
 - - - TELEPHONE LINE (APPROX. 1.5 TO 3')
 - - - WATER LINE (APPROX. 2-6')
 - - - STORM SEWER LINE (APPROX. 1.5 TO 3')
 - GROUNDWATER FLOW DIRECTION

NOTES:
 1. UTILITY LOCATIONS/DEPTHS, FORMER USTs/PRODUCT LINES, AND ABANDONED WELL LOCATIONS ARE APPROXIMATE, BASED ON LIMITED SITE OBSERVATIONS AND PRIOR MAPS PROVIDED BY MOHE.

FIGURE 4 - AERIAL PHOTOGRAPH 27252382.DWG 4	DATE: 7/29/2023 DRAWN BY: LAM CHECKED BY: LAM PROJECT NUMBER: 27252382.DWG	SCS ENGINEERS 8575 West 110th Street, Suite 100 Overland Park, Kansas 66210	CLIENT: FOLEY TRACTOR COMPANY (12-097-00216) 1550 S. WEST STREET WICHITA, KANSAS PHONE: 316.842.4353 FAX: 316.842.4353	
	DATE: 7/29/2023 DRAWN BY: LAM CHECKED BY: LAM PROJECT NUMBER: 27252382.DWG	SCS ENGINEERS 8575 West 110th Street, Suite 100 Overland Park, Kansas 66210	CLIENT: FOLEY TRACTOR COMPANY (12-097-00216) 1550 S. WEST STREET WICHITA, KANSAS PHONE: 316.842.4353 FAX: 316.842.4353	DATE: 7/29/2023 DRAWN BY: LAM CHECKED BY: LAM PROJECT NUMBER: 27252382.DWG
	DATE: 7/29/2023 DRAWN BY: LAM CHECKED BY: LAM PROJECT NUMBER: 27252382.DWG	SCS ENGINEERS 8575 West 110th Street, Suite 100 Overland Park, Kansas 66210	CLIENT: FOLEY TRACTOR COMPANY (12-097-00216) 1550 S. WEST STREET WICHITA, KANSAS PHONE: 316.842.4353 FAX: 316.842.4353	DATE: 7/29/2023 DRAWN BY: LAM CHECKED BY: LAM PROJECT NUMBER: 27252382.DWG
	DATE: 7/29/2023 DRAWN BY: LAM CHECKED BY: LAM PROJECT NUMBER: 27252382.DWG	SCS ENGINEERS 8575 West 110th Street, Suite 100 Overland Park, Kansas 66210	CLIENT: FOLEY TRACTOR COMPANY (12-097-00216) 1550 S. WEST STREET WICHITA, KANSAS PHONE: 316.842.4353 FAX: 316.842.4353	DATE: 7/29/2023 DRAWN BY: LAM CHECKED BY: LAM PROJECT NUMBER: 27252382.DWG