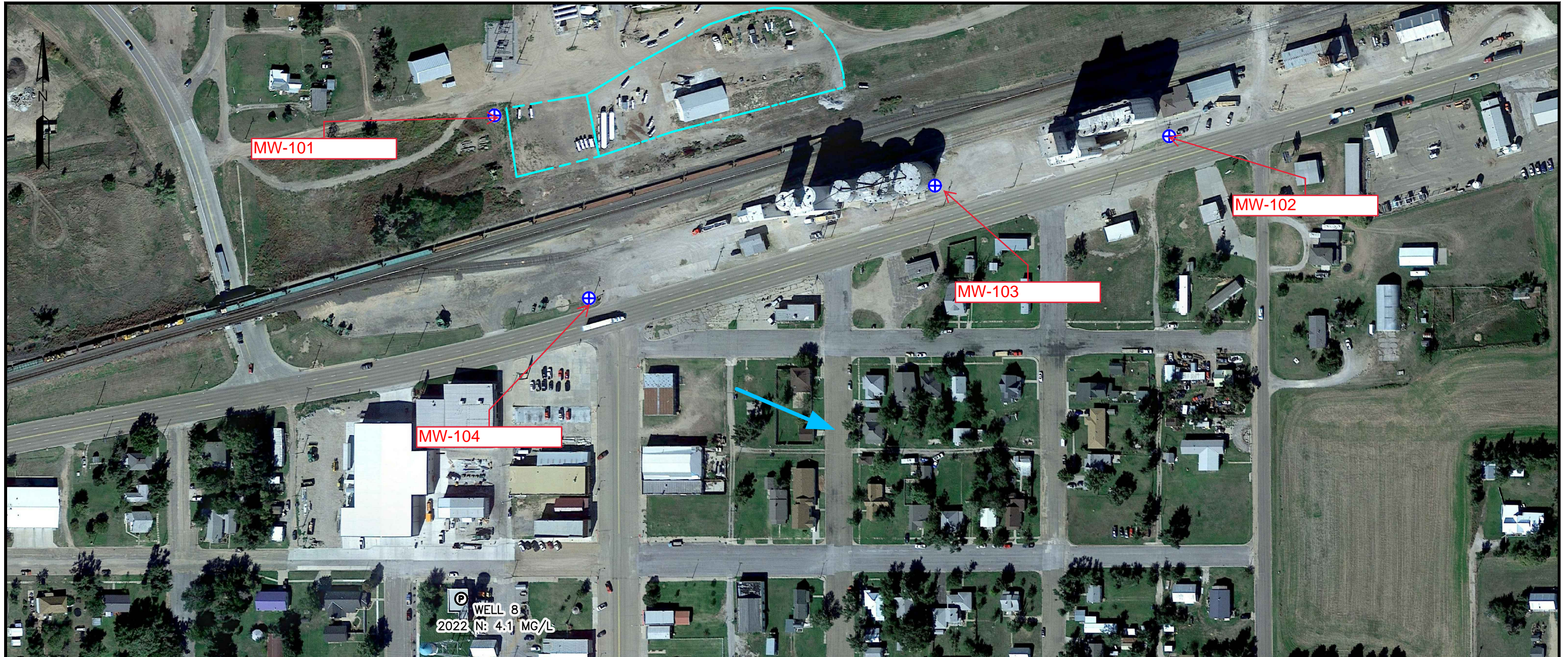








| | | |
|------------|--------------------------------|--|
| DOC ID | 1670522 | |
| Form | WWC5.2 | |
| Contractor | Woofter Pump & Well, Inc. #881 | |
| From | To | LithologicLog |
| 0 | 2 | Surface Top soil Native soil |
| 2 | 97 | Clay with caliche lenses and traces of sand |
| 97 | 106 | Fine and medium sand with few clay streaks |
| 106 | 118 | Fine and medium sand and small gravel with clay lenses |
| 118 | 123 | Clay with sand lenses |

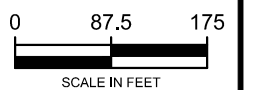


LEGEND

-  LEASED PROPERTY BOUNDARY (APPROXIMATE)
-  PROPOSED MONITORING WELL
-  PUBLIC WATER SUPPLY WELL
-  ASSUMED GROUNDWATER FLOW DIRECTION
-  WELL 8
2022 N: 4.1 MG/L
-  2022 NITRATE-N CONCENTRATION (MG/L)

NOTES

1. PHOTOSOURCE: [GOOGLE EARTH](#) IMAGE DATE OCTOBER 2017. DATE ACCESSED MAY 2021
2. CITY OF BUCKLIN WELL 8 NITRATE-N CONCENTRATION WAS OBTAINED FROM THE KANSAS PUBLIC WATER SUPPLY SYSTEM PORTAL IN JULY 2022.



PROPOSED GROUNDWATER MONITORING WELL LOCATIONS

**OFFERLE COOP
314 EAST RAILROAD
BUCKLIN, KANSAS**

| | |
|-------------------------|----------------|
| DATE: | SEPTEMBER 2022 |
| SCALE: | 1"=175' |
| DRAWN BY: | ASR |
| APPROVED: | BS |
| REVISED FIGURE 5 | |