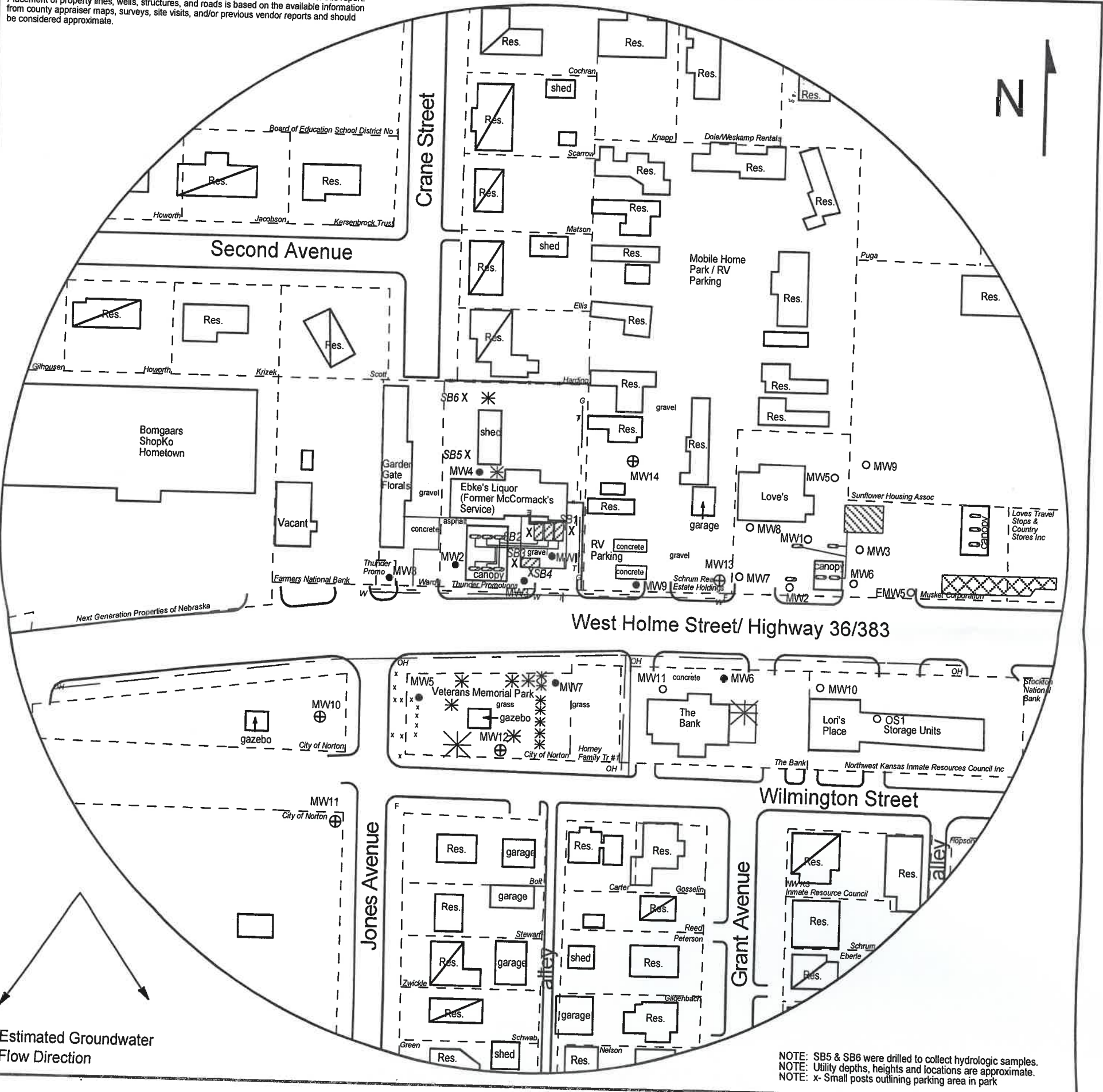




34-2-23W

NOTE: Figures exhibited within this report are only to be used within the context of this report. Placement of property lines, wells, structures, and roads is based on the available information from county appraiser maps, surveys, site visits, and/or previous vendor reports and should be considered approximate.



NOTE: SB5 & SB6 were drilled to collect hydrologic samples.  
NOTE: Utility depths, heights and locations are approximate.  
NOTE: x- Small posts outlining parking area in park

FIGURE 2.1 - 500 FT RADIUS AREA BASE MAP



**PROJECT:**  
McCormack's Service  
407 W. Holme  
Norton, KS  
KDHE ID: U6-069-00154  
Date: 11/16-17/22

0 100 ft

1311 E 25th St., Suite B 785-841-8707 office  
Lawrence, KS 66046 785-865-4282 fax

**LEGEND**

- Approximate Location of Former UST Basin, Product Lines & Pump Islands
- Approximate Location of Active UST Basin, Pump Islands, and Vents
- Building with Basement
- Approximate Location of Property Line
- Monitoring Well
- New Monitoring Well (installed 11/14-17/22)
- Plugged Monitoring Well (Love's Country Store 60)
- Soil Boring (drilled 5/16-19/22, 5/26/22)
- Fire Hydrant
- Gas Lines (1.5 - 3 ft bgs)
- Overhead Lines (25'-40' high)
- Sewer Lines (2 - 6 ft bgs)
- Telephone Lines (2 - 6 ft bgs)
- Water Lines (2 - 6 ft bgs)

Norton

Norton

34-2-23W

**DENNIS L HANDKE**

1820 NW 59th Terrace  
TOPEKA, KANSAS 66618  
785-286-4047 Home

Jess Chapman  
Larsen & Assoc.  
1311 E. 25<sup>th</sup> St., Suite B  
Topeka, Kansas 66046

December 3, 2022

RE: Monitor Well Elevation Survey  
407 W. Holme St., Norton, Kansas

Proj. 22-00000  
McCormack's Service  
KDHE ID U6-069-00154

Bench Mark: Chisled sq. on SW corner of concrete sign base near the SE corner of property.  
Elev.: 2335.02      North 3980.84      West 1308.47      (from NE Cor. Sec. 34-2-23W)

MW-10	rim	2336.66	North 3846.29	NE1/4,NE1/4,SW1/4,NE1/4
	top pipe	2336.26	West 1541.69	Lat = 39.83830 Long = 99.89431
MW-11	rim	2336.39	North 3742.04	NE1/4,NE1/4,SW1/4,NE1/4
	top pipe	2335.98	West 1540.30	Lat = 39.83801 Long = 99.89431
MW-12	rim	2335.06	North 3809.65	NE1/4,NE1/4,SW1/4,NE1/4
	top pipe	2334.80	West 1376.40	Lat = 39.83820 Long = 99.89372
MW-13	rim	2333.27	North 3994.29	SW1/4,SW1/4,NE1/4,NE1/4
	top pipe	2332.90	West 1175.12	Lat = 39.83870 Long = 99.89300
MW-14	rim	2334.24	North 4090.84	SW1/4,SW1/4,NE1/4,NE1/4
	top pipe	2333.93	West 1259.19	Lat = 39.83896 Long = 99.89330

Lat & Long derived from Norton 7.5' quad map. WGS84.

Elevation derived from existing project. NAVD 88.

If you have any questions, please feel free to call me. Thank you for the opportunity to be of service to you.

