

MW-3

KSA 82a-1212 Check: ☐ White Copy, ☐ Blue Copy, ☐ Pink Copy

LOG OF TEST BORING

JOB NO.

2015-245

VERTICAL SCALE

1" =

BORING NO.

MW-3 (west well)

PROJECT

Oberlin KS

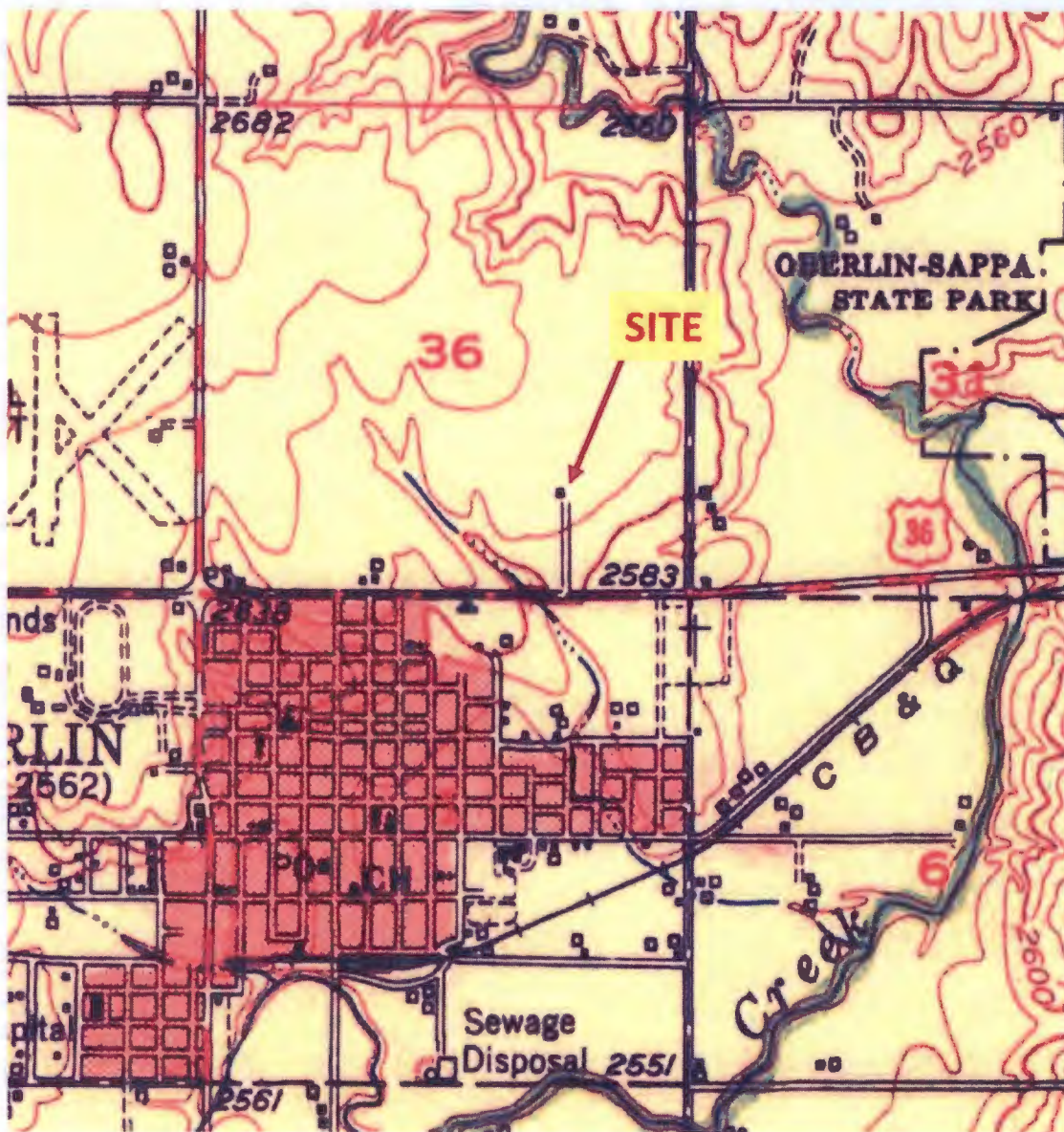
DEPTH IN FEET	DESCRIPTION OF MATERIAL	GEOLOGIC ORIGIN	N	WL	SAMPLE		LABORATORY TESTS			
					NO.	TYPE	W	D	LL P.L.	QU
	SURFACE ELEVATION									
	Sandy Silt. Brn. moist w/ clay	prop			Prop	Prop				Finish with (3) bumper posts 2' x 2' concrete pad
	clay									
	68' Hard drilling	gravel 0-60'								2" sand 40 are well set @ 97'
	shale layers ~ 80'	64' chips 66'								25' screen sand to 68'
	97'	pellets 68- sand								pellets to 66' chips to 64' gravel 64' surface
	well set @ 97'	72								
	25' screen									
	12-20 sand to 68'									
		97								

WATER LEVEL MEASUREMENTS

START

COMPLETE

DATE	TIME	SAMPLED DEPTH	CASING DEPTH	CAVE-IN DEPTH	BAILED DEPTHS	WATER LEVEL	METHOD
					10		4 1/2" WSA
					10		1-25-16 - monkey
					10		DA/CH/ JR
					10		
							CREW CHIEF



Mapped, edited, and published by the Geological Survey
as part of the Department of the Interior program
for the development of the Missouri River Basin

Control by USGS and USC&GS

Topography from aerial photographs by multiplex methods
and by plane-table surveys 1951. Aerial photographs taken 1950

OBERLIN, KANS.

N3945—W10030/15

1951

WCEC
ENVIRONMENTAL CONSULTANTS

West Central
Environmental Consultants
10504 Bluejacket Street
Overland Park, KS 66214

PROJECT NO: 15-10580-190

DESIGNED BY: WCEC

SCALE: NTS

REVIEWED BY: ESC

DRAWN BY: ESC

DATE: 9/11/15

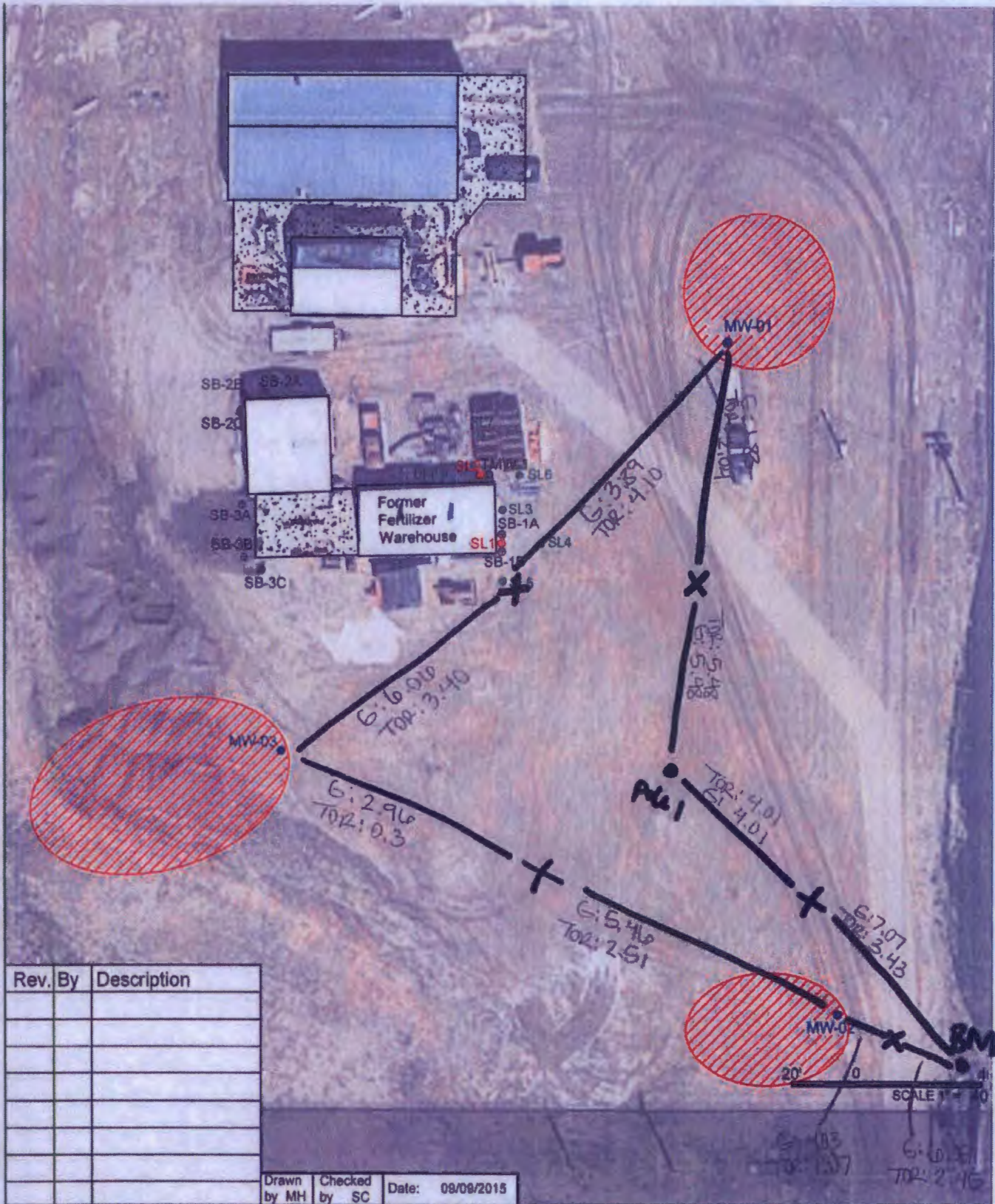
FILE: FIG 1

FIGURE 1 – SITE LOCATION

KDHE VCPRP 15VCP0010

FORMER HANSEN-MUELLER PROPERTY
708 EAST FRONTIER STREET
OBERLIN, KANSAS

Survey 2/18/16 MT



Rev.	By	Description

Drawn by MH Checked by SC Date: 09/09/2015

KEY
 MW-# • Proposed Monitoring Well
 SL-# • Proposed Soil Sampling Location, Extended Boring
 SL-# • Proposed Soil Sampling Location
 TMW-# • Previous Temporary Monitoring Well (03/18/2015)
 SB-# • Previous Soil Sampling Location (03/18/2015)

PROJECT No.: 15-10580-190
Former Hansen-Mueller Property
708 East Frontier Street, Oberlin, KS
FIGURE 3: VCI Sample Location Map

WCEC
 ENVIRONMENTAL CONSULTANT

