

WATER WELL RECORD

Form WWC-5

Division of Water Resources App. No.

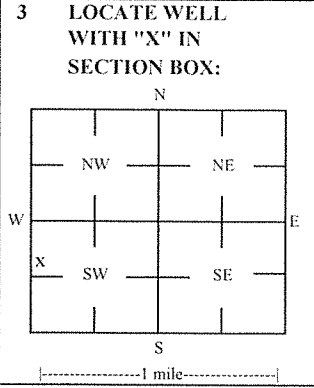
Well ID

MW2

Original Record Correction Change in Well Ust

1 LOCATION OF WATER WELL: County Harper Fraction NW 1/4 SW 1/4 NW 1/4 SW 1/4 Section Number 24 Township Number T 33 S Range Number R 7 E W

2 WELL OWNER: Last Name: Business: 828 Doolin Acquisition, LLC Address: 9003 W. Silver Hollow Court City: Wichita State: KS ZIP: 67205 Street or Rural Address where well is located (if unknown, distance and direction from nearest town or intersection): 519 North LL & G (Hwy 14), Anthony, KS



4 DEPTH OF COMPLETED WELL: 15.5 ft Depth(s) Groundwater Encountered: 1) 15.5 ft 2) ft 3) ft or 4) Dry Well WELL'S STATIC WATER LEVEL: 8.8 ft. X below land surface, measured on (mo-day-yr) 7/13-14/20

5 Latitude: 37.15718 (decimal degrees) Longitude: 98.03899 (decimal degrees) Horizontal Datum: X WGS 84 NAD 83 NAD 27 Source for Latitude/Longitude: GPS (unit make/model:) (WAAS enabled? Yes No) X Land Survey Topographic Map Online Mapper

7 WELL WATER TO BE USED AS: 1 Domestic: Household Lawn & Garden Livestock Irrigation Feedlot Industrial 2 Public Water Supply: well ID 3 Dewatering: how many wells? 4 Aquifer Recharge: well ID 5 Monitoring: well ID MW2 6 Environmental Remediation: well ID 7 Air Sparge 8 Soil Vapor Extractor 9 Recovery 10 Injection 10 Oil Field Water Supply: lease 11 Test Hole: well ID Cased Uncased Geotechnical 12 Geothermal: How many bores? a) Closed Loop Horizontal Vertical b) Open Loop Surface Discharge Inj. of Water Other (specify):

Was a chemical/bacteriological sample submitted to KDHE? Yes No X No If yes, date sample was submitted: Water well disinfected? Yes No X No

8 TYPE OF CASING USED: Steel PVC Other CASING JOINTS: Glued Clamped Welded X Threaded Casing diameter 2 in. to 5.5 ft. Diameter in. to ft. Diameter in. to ft. Casing height above land surface -0.43 in. Weight lbs./ft. Well thickness or gauge No TYPE OF SCREEN OR PERFORATION MATERIAL: Steel Stainless Steel Fiberglass PVC Other (Specify) Brass Galvanized Steel Concrete tile None used (open hole) SCREEN OR PERFORATION OPENINGS ARE: Continuous Slot X Mill Slot Gauze Wrapped Torch Cut Drilled Holes Other (Specify) Louvered Shutter Key Punched Wire Wrapped Saw Cut None (Open Hole) SCREEN-PERFORATED INTERVALS: From 5.5 ft. to 15.5 ft. From ft. to ft. From ft. to ft. GRAVEL PACK INTERVALS: From 3.5 ft. to 15.5 ft. From ft. to ft. From ft. to ft.

9 GROUT MATERIAL: Neat cement Cement grout X Bentonite X Other Concrete: 0-0.5' Grout intervals: From 0.5 ft. to 3.5 ft. From ft. to ft. From ft. to ft.

Nearest source of possible contamination: Septic Tank Lateral Lines Pit Privy Livestock Pens Insecticide Storage Sewer Lines Cess Pool Sewage Lagoon X Fuel Storage Abandoned Water Well Watertight Sewer Lines Seepage Pit Feedyard Fertilizer Storage Oil Well / Gas Well Other (Specify): Direction from well? S Distance from well? ~10 ft

Table with 6 columns: FROM, TO, LITHOLOGIC LOG, FROM, TO, LITHO. LOG (cont.) or PLUGGING INTERVALS. Rows show depth intervals and lithology: 0-0.5 Concrete, 0.5-1 Gravel/sand fill, 1-9 Clayey silt, 9-14.5 Coarse sand, 14.5-15.5 Shale.

Notes: KDHE ID: Stars & Stripes: U2-039-15183 Target of monitoring well is shallow groundwater, <20' of grout was installed at the direction of KDHE.

11 CONTRACTOR'S OR LANDOWNER'S CERTIFICATION: This water well was X constructed, reconstructed, or plugged under my jurisdiction and was completed on (mo-day-year) 6/23/20 and this record is true to the best of my knowledge and belief. Kansas Water Well Contractor's License No 757 This Water Well Record was completed on (mo-day-year) 7/24/20 under the business name of Larsen & Associates, Inc. Signature

DENNIS L HANDKE

1820 NW 59th Terrace
Topeka, Kansas 66618
785-286-4047 Home

Jess Chapman
Larsen & Assoc.
1311 E. 25th street, Suite B
Lawrence, Kansas 66046

July 24, 2020

RE: Monitor well Elevation Survey
519 North LL & G (Hwy 14)

Proj. 20-00JJ
Stars & Stripes
KDHE ID U2-039-15183

Bench Mark: Square cut on NW corner of North concrete column base West of building.
Elev: 1340.41 North 1675.77 West 5268.17 (from SE Cor. Sec. 24-33-7W)

MW	Type	Elev	North	West	Coordinates
MW-1	rim	1340.91	North 1695.63	West 5201.95	NW1/4,SW1/4,NW1/4,SW1/4
	Top pipe	1340.17			Lat. 37.15699 Long. 98.03885
MW-2	rim	1341.71	North 1765.66	West 5240.56	NW1/4,SW1/4,NW1/4,SW1/4
	top pipe	1341.28			Lat. 37.15718 Long. 98.03899
MW-3	rim	1337.20	North 1525.47	West 5174.98	SW1/4,SW1/4,NW1/4,SW1/4
	top pipe	1336.91			Lat. 37.15652 Long. 98.03876
MW-4	rim	1340.70	North 1737.64	West 5138.26	NW1/4,SW1/4,NW1/4,SW1/4
	top pipe	1340.36			Lat. 37.15710 Long. 98.03864
MW-5	rim	1338.78	North 1634.69	West 5135.17	SW1/4,SW1/4,NW1/4,SW1/4
	top pipe	1338.33			Lat. 37.15682 Long. 98.03863
MW-6	rim	1340.06	North 1698.52	West 5289.48	NW1/4,SW1/4,NW1/4,SW1/4
	top pipe	1339.71			Lat. 37.15700 Long. 98.03915
MW-7	rim	1339.32	North 1596.22	West 5290.68	SW1/4,SW1/4,NW1/4,SW1/4
	top pipe	1338.94			Lat. 37.15672 Long. 98.03916
MW-8	rim	1339.98	North 1619.28	West 5221.45	SW1/4,SW1/4,NW1/4,SW1/4
	top pipe	1339.64			Lat. 37.15678 Long. 98.03892

Lat & Long derived from Anthony 7.5' quad map. WGS 84

Elevation derived from NGS Bench Mark H 366 NAVD 88

If you have any questions, please feel free to call me. Thank you for the opportunity to be of service to you.

Dennis L Handke RLS
12-785
Dennis L Handke
LAND SURVEYOR

NOTE: Figures exhibited within this report are only to be used within the context of this report. Placement of property lines, wells, structures, and roads is based on the available information from county appraiser maps, surveys, site visits, and/or previous vendor reports and should be considered approximate.

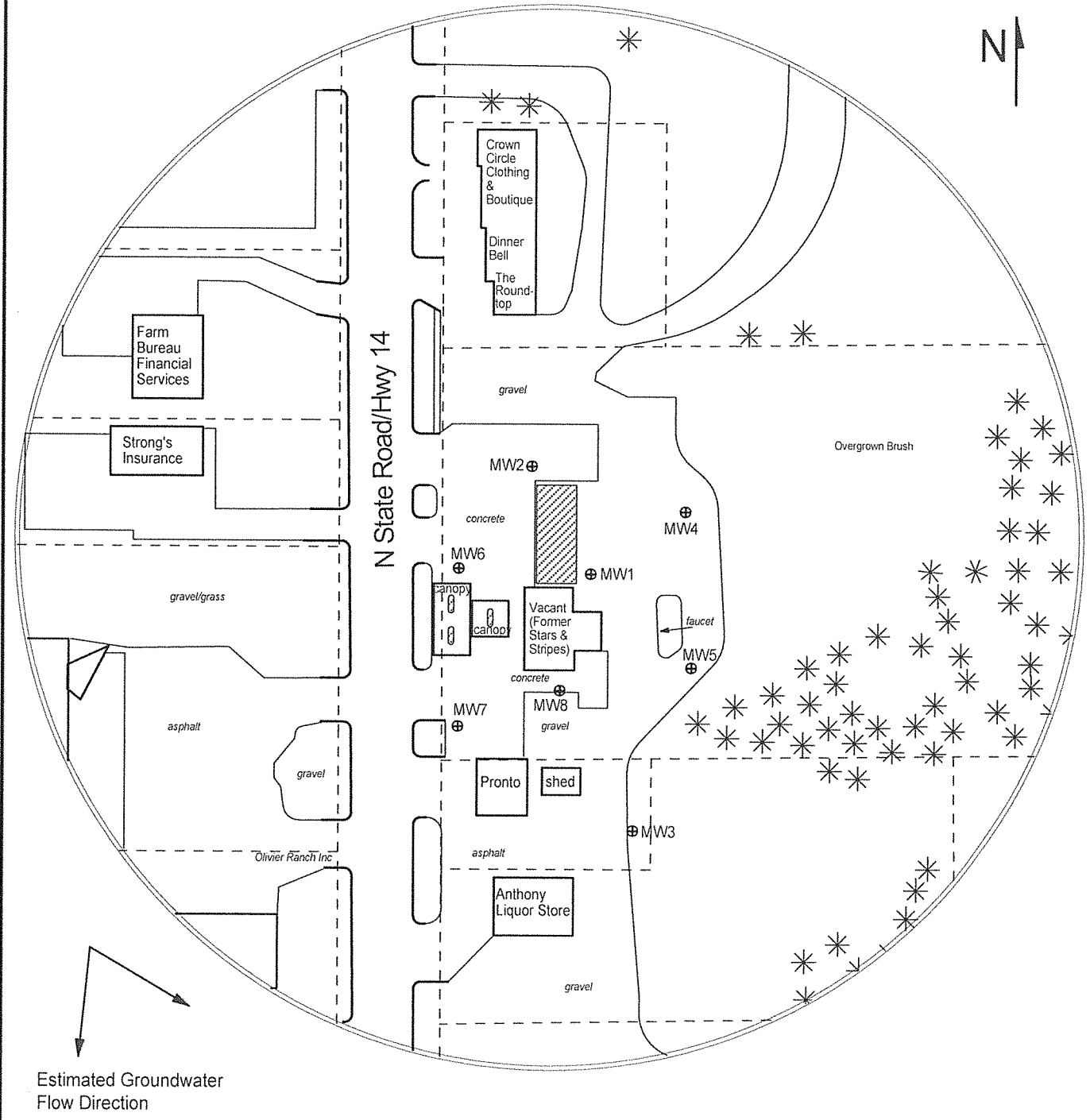


FIGURE 2.1 - 350 FT RADIUS AREA BASE MAP

- LEGEND:**
- Approximate Location of Former UST Basin & Pump Islands
 - Approximate Location of Property Line
 - Monitoring Well (Installed 6/23-24/20)
 - Soil Boring (Drilled 6/24/20)
 - Fire Hydrant
 - Gas Line (1.5 - 3 ft bgs)
 - Overhead Lines (25'-40' high)
 - Sewer Lines (2 - 6 ft bgs)
 - Telephone Lines (2 - 6 ft bgs)
 - Water Lines (1.5 - 3 ft bgs)

NOTE: SB5 & SB6 were drilled to collect hydrologic samples.
NOTE: Utility depths, heights and locations are approximate.



PROJECT:
 Stars & Stripes
 519 North LL & G (Hwy 14)
 Anthony, KS
 KDHE ID: U2-039-15183
 Date: 7/13-14/20



1311 E 25th St. Suite B 785-841-8707 office
 Lawrence, KS 66046 785-865-4282 fax