

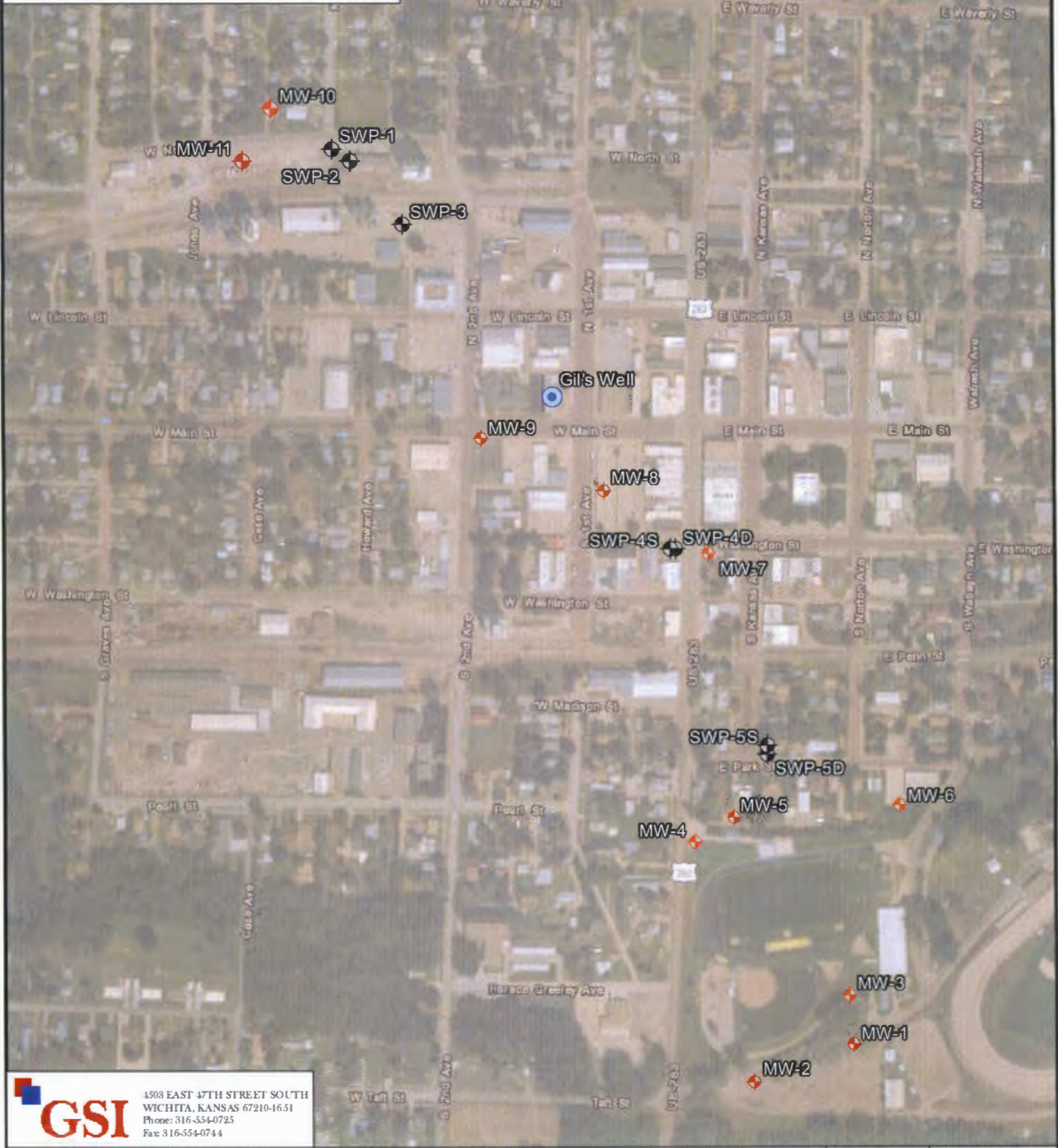
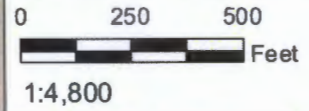
Norton CO
KDHE

NW NW 2-3-23W
SE 34-2-23W
SW SW 35-2-23W

LEGEND

- ◆ = New Monitoring Well
- ◆ = Existing Monitoring Well

ALL LOCATIONS AND BOUNDARIES ARE APPROXIMATE



GSI
4508 EAST 47TH STREET SOUTH
WICHITA, KANSAS 67210-1651
Phone: 316-554-0725
Fax: 316-554-0744

FIGURE 2	SITE BASE MAP WITH WELL LOCATIONS	Norton Carbon Tetrachloride Site KDHE #: C6-069-71817 West North St. to Elmwood Park Norton, Kansas		PROJ.#: 1774138	DRAWN BY: CD
		DATE: 03-13-18	PROJ.MANGR: NB		