



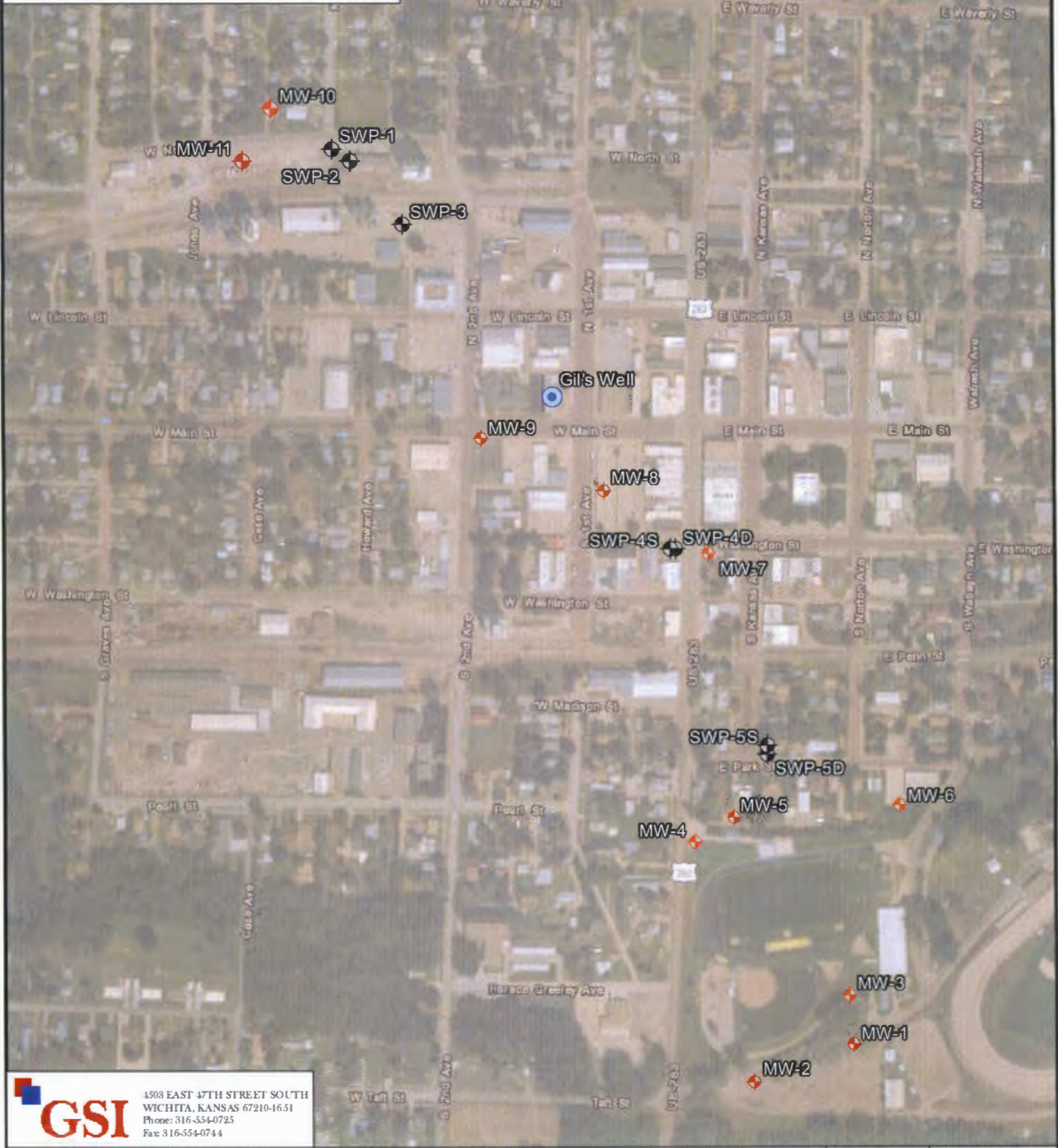
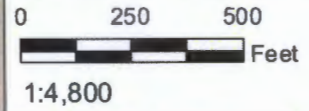
Norton CO  
KDHE

NW NW 2-3-23W  
SE 34-2-23W  
SW SW 35-2-23W

**LEGEND**

- ◆ = New Monitoring Well
- ◆ = Existing Monitoring Well

ALL LOCATIONS AND BOUNDARIES ARE APPROXIMATE



**GSI**  
4508 EAST 47TH STREET SOUTH  
WICHITA, KANSAS 67210-1651  
Phone: 316-554-0725  
Fax: 316-554-0744

<b>FIGURE</b>  <span style="font-size: 2em;">2</span>	<b>SITE BASE MAP WITH</b> <b>WELL LOCATIONS</b>	Norton Carbon Tetrachloride Site KDHE #: C6-069-71817 West North St. to Elmwood Park Norton, Kansas		PROJ.#: 1774138	DRAWN BY: CD
				DATE: 03-13-18	PROJ.MANGR: NB