

MW 13D

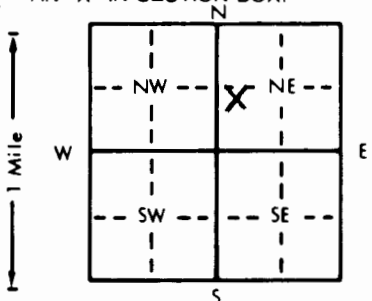
1 LOCATION OF WATER WELL: Fraction NE SW Section Number Township Number Range Number  
 County: Sheridan NE 1/4 SW 1/4 NE 1/4 9 T 6 S R 29 EW

Distance and direction from nearest town or city street address of well if located within city?

2 WATER WELL OWNER: Home Oil Co.  
 RR#, St. Address, Box #: Selden, Ks. 67757  
 City, State, ZIP Code: Board of Agriculture, Division of Water Resources

MW 13D Application Number:

3 LOCATE WELL'S LOCATION WITH AN "X" IN SECTION BOX:



4 DEPTH OF COMPLETED WELL: 206 ft. ELEVATION:

Depth(s) Groundwater Encountered 129.82 ft. 2. ft. 3. ft.

WELL'S STATIC WATER LEVEL 129.82 ft. below land surface measured on mo/day/yr

Pump test data: Well water was ft. after hours pumping gpm

Est. Yield gpm: Well water was ft. after hours pumping gpm

Bore Hole Diameter 8 in. to 206 ft. and in. to ft.

WELL WATER TO BE USED AS: 5 Public water supply 8 Air conditioning 11 Injection well

1 Domestic 3 Feedlot 6 Oil field water supply 9 Dewatering 12 Other (Specify below)

2 Irrigation 4 Industrial 7 Lawn and garden only 10 Monitoring well

Was a chemical/bacteriological sample submitted to Department? Yes No X If yes, mo/day/yr sample was sub-

mitted Water Well Disinfected? Yes No X

5 TYPE OF BLANK CASING USED:

5 Wrought iron 8 Concrete tile CASING JOINTS: Glued Clamped

1 Steel 3 RMP (SR) 6 Asbestos-Cement 9 Other (specify below) Welded

2 PVC 4 ABS 7 Fiberglass Threaded X

Blank casing diameter 4 in. to 196 ft. Dia in. to ft. Dia in. to ft.

Casing height above land surface 0 in. weight 2.071 lbs./ft. Wall thickness or gauge No. 237

TYPE OF SCREEN OR PERFORATION MATERIAL:

7 PVC 10 Asbestos-cement

1 Steel 3 Stainless steel 5 Fiberglass 8 RMP (SR) 11 Other (specify)

2 Brass 4 Galvanized steel 6 Concrete tile 9 ABS 12 None used (open hole)

SCREEN OR PERFORATION OPENINGS ARE:

5 Gauzed wrapped 8 Saw cut 11 None (open hole)

1 Continuous slot 3 Mill slot 6 Wire wrapped 9 Drilled holes

2 Louvered shutter 4 Key punched 7 Torch cut 10 Other (specify)

SCREEN-PERFORATED INTERVALS: From 196 ft. to 206 ft. From ft. to ft.

From 194.5 ft. to 206 ft. From ft. to ft.

GRAVEL PACK INTERVALS: From ft. to ft. From ft. to ft.

From ft. to ft. From ft. to ft.

6 GROUT MATERIAL: 1 Neat cement 2 Cement grout 3 Bentonite 4 Other

Grout Intervals: From 0 ft. to 3 ft. From 3 ft. to 194.5 ft. From ft. to ft.

What is the nearest source of possible contamination:

10 Livestock pens 14 Abandoned water well

1 Septic tank 4 Lateral lines 7 Pit privy 11 Fuel storage 15 Oil well/Gas well

2 Sewer lines 5 Cess pool 8 Sewage lagoon 12 Fertilizer storage 16 Other (specify below)

3 Watertight sewer lines 6 Seepage pit 9 Feedyard 13 Insecticide storage Removed Fuel Storage

Direction from well? How many feet?

FROM TO LITHOLOGIC LOG FROM TO PLUGGING INTERVALS

0 6 Asphalt 108 120 Med. Sand w/Clay Strks. &

.6 2 Surface Some Caliche

2 11 Loess 120 122 Cemented Sand w/Clay Strks.

11 32 Sandy Clay 122 132 Cemented Sand w/Clay Strks. &

32 36 Sandy Clay w/Caliche Some Sand

36 45 Med. Sand w/Clay Strks. 132 134 Med. Sand

45 50 Cemented Sand w/Clay Strks. 134 136 Cemented Sand

50 60 Sandy Clay w/Sand Strks. 136 140 Med. Sand

60 62 Cemented Sand 140 143 Tight Med. Sand

62 70 Cemented Sand w/Clay & Sand Strks. 143 154 Med. Sand & Gravel w/a few

70 80 Sandy Clay w/Caliche & S. Sand 154 155.5 Cemented Sand

80 89 Sandy Clay w/Caliche & Sand Clay Layers

89 92 Med. Sand w/Clay Strks. 155.5 159 Clay 159 to 170 Fine to Med

92 94 Clay 170 205 Med. Sand & Gravl Sand w/Clay

94 108 Caliche w/Clay Strks. 205 206 Shale

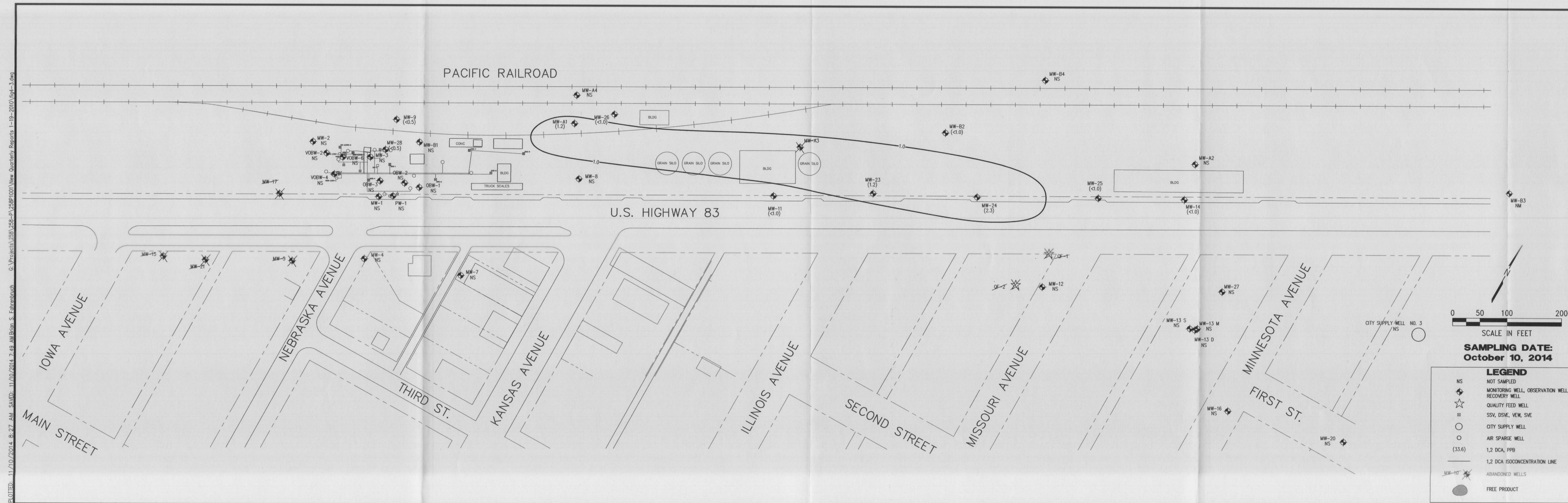
7 CONTRACTOR'S OR LANDOWNER'S CERTIFICATION: This water well was (1) constructed, (2) reconstructed, or (3) plugged under my jurisdiction and was

completed on (mo/day/year) 10-19-95 and this record is true to the best of my knowledge and belief. Kansas

Water Well Contractor's License No. 554 This Water Well Record was completed on (mo/day/yr) 10-25-95

under the business name of Woofter Pump & Well, Inc. by (signature)





**MILCO**  
**Environmental**  
**Services, Inc.**  
Kearney, NE (308) 237-5923  
McCook, NE (308) 345-4741

HOME OIL  
**1,2 DICHLOROETHANE ISOCONCENTRATION MAP**  
SELDEN, KANSAS U6-090-221

SCALE: 1" = 100'	
PROJECT NO. M258-P1-001	
DATE: NOVEMBER, 2014	
FIELD BOOK	M&A DWG NO.
DRAWN BY: BSF	APRVD BY:
SHEET	

**FIGURE 4.3**