

WATER WELL RECORD Form WWC-5

Original Record Correction Change in Well Use

Division of Water Resources App. No.

Well ID

Well ID

1 LOCATION OF WATER WELL: County: Fraction 1/4 1/4 1/4 1/4 Section Number Township Number Range Number

2 WELL OWNER: Last Name: Business: Address: City: State: ZIP: Street or Rural Address where well is located

3 LOCATE WELL WITH 'X' IN SECTION BOX: NW NE SW SE S

4 DEPTH OF COMPLETED WELL: Depth(s) Groundwater Encountered: WELL'S STATIC WATER LEVEL: Pump test data: Estimated Yield: Bore Hole Diameter:

5 Latitude: Longitude: Datum: Source for Latitude/Longitude: 6 Elevation: Source:

7 WELL WATER TO BE USED AS: 1. Domestic: 2. Irrigation: 3. Feedlot: 4. Industrial: 5. Public Water Supply: 6. Dewatering: 7. Aquifer Recharge: 8. Monitoring: 9. Environmental Remediation: 10. Oil Field Water Supply: 11. Test Hole: 12. Geothermal: 13. Other

Was a chemical/bacteriological sample submitted to KDHE? Water well disinfected?

8 TYPE OF CASING USED: CASING JOINTS: Casing diameter: Casing height above land surface: TYPE OF SCREEN OR PERFORATION MATERIAL: SCREEN OR PERFORATION OPENINGS ARE: SCREEN-PERFORATED INTERVALS: GRAVEL PACK INTERVALS:

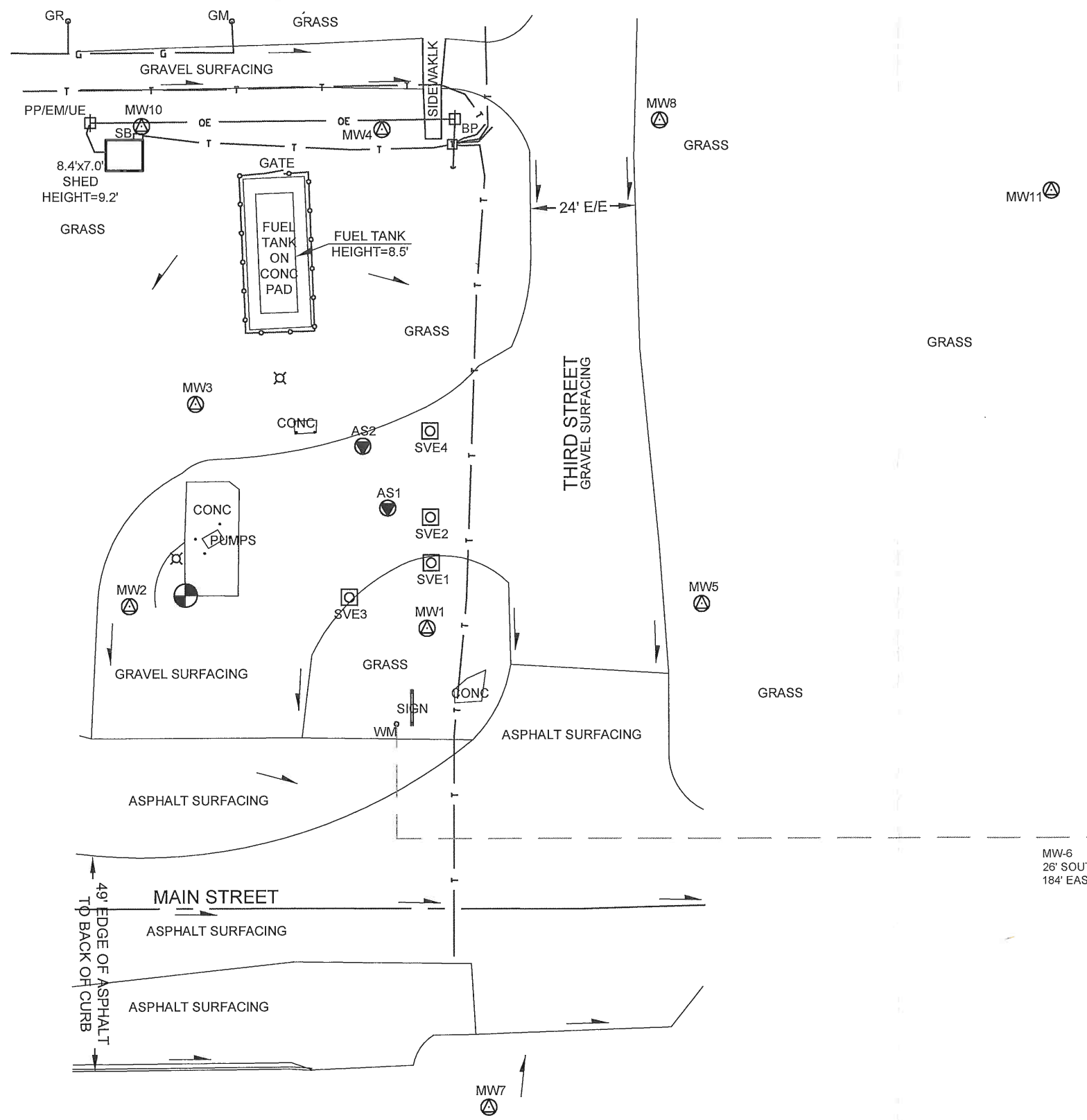
9 GROUT MATERIAL: Grout Intervals: Nearest source of possible contamination: Direction from well? Distance from well?

Table with 6 columns: FROM, TO, LITHOLOGIC LOG, FROM, TO, LITHO. LOG (cont.) or PLUGGING INTERVALS. Includes a Notes section.

11 CONTRACTOR'S OR LANDOWNER'S CERTIFICATION: This water well was constructed, reconstructed, or plugged under my jurisdiction and was completed on (mo-day-year) and this record is true to the best of my knowledge and belief.

FULL SITE SURVEY

City of Aurora
City of Aurora, Cloud County, Kansas

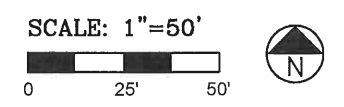
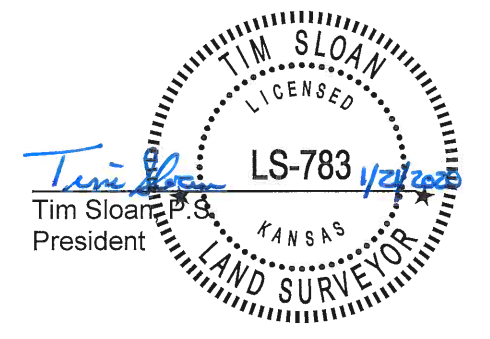


Point	North Coordinate	East Coordinate	Distance From SE Cor. Sec. 10		* Elev. Top of Rim or PK Nail	Elev. Top of PVC Pipe	Latitude North	Longitude West
			North	West				
SE Cor. Sec. 10-T7S-R2w	20000	20000						
Well - M.W. - 1	20072.27	16597.68	72.27	3402.32	1499.53	1499.28	39.45221	97.52975
Well - M.W. - 2	20077.31	16530.58	77.31	3469.42	1502.74	1502.54	39.45222	97.52998
Well - M.W. - 3	20122.89	16545.12	122.89	3454.88	1502.26	1501.94	39.45235	97.52993
Well - M.W. - 4	20184.76	16586.49	184.76	3413.51	1502.50	1502.09	39.45252	97.52978
Well - M.W. - 5	20077.77	16659.60	77.77	3340.40	1497.27	1496.85	39.45222	97.52953
Well - M.W. - 6	20024.81	16775.01	24.81	3224.99	1493.97	1493.79	39.45208	97.52912
Well - M.W. - 7	19964.14	16612.19	35.86 S	3387.81	1499.27	1498.87	39.45191	97.52970
Well - M.W. - 8	20186.79	16649.02	186.79	3350.98	1500.06	1499.26	39.45252	97.52956
Well - M.W. - 9	19976.14	16466.57	23.86 S	3533.43	1502.01	1501.79	39.45195	97.53021
Well - M.W. - 10	20185.48	16532.34	185.48	3467.66	1503.24	1502.85	39.45252	97.52997
Well - M.W. - 11	20170.87	16737.68	170.87	3262.32	1595.89	1595.64	39.45248	97.52925
Well - A.S. - 1	20099.43	16588.56	99.43	3411.44	1500.85	1500.58	39.45228	97.52978
Well - A.S. - 2	20113.42	16582.83	113.42	3417.17	1501.20	1500.76	39.45232	97.52980
Well - S.V.E. - 1	20087.05	16598.49	87.05	3401.51	1499.91	1499.64	39.45225	97.52974
Well - S.V.E. - 2	20097.35	16598.23	97.35	3401.77	1500.28	1499.98	39.45223	97.52981
Well - S.V.E. - 3	20079.27	16580.10	79.27	3419.90	1500.76	1500.49	39.45223	97.52981
Well - S.V.E. - 4	20116.81	16597.96	116.81	3402.04	1500.62	1500.35	39.45233	97.52974
Site B.M.	20079.77	16543.29	79.77	3456.71		B.M. Elev. = 1502.07		

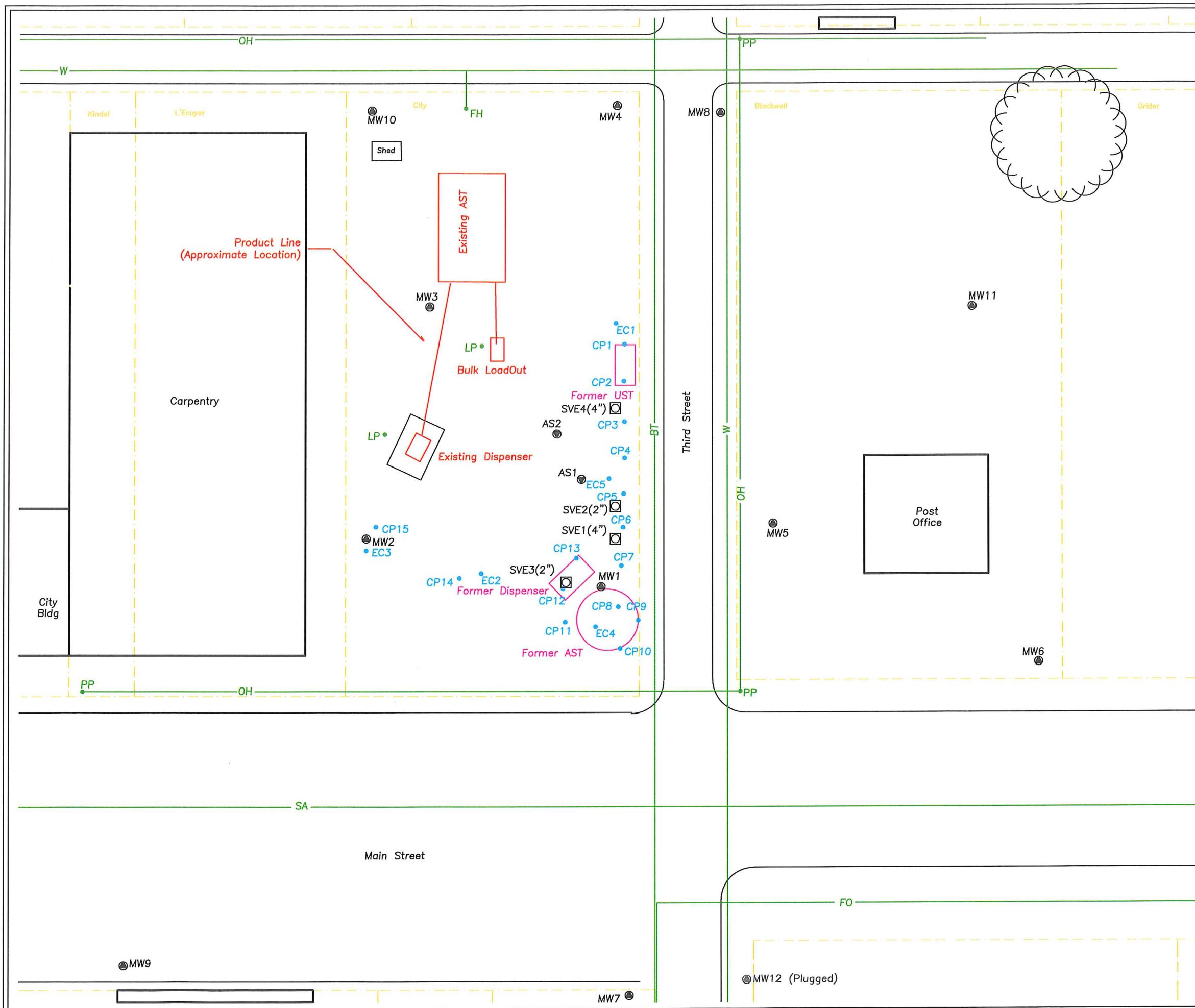
Description: "□" cut on southwest corner of pump pad.

LEGEND

- SITE BENCHMARK
- POWER POLE
- POWER POLE W/ ELECTRIC METER & UNDERGROUND ELECTRIC
- BRACE POLE
- DEADMAN ANCHOR
- LIGHT POLE
- TELEPHONE PEDESTAL
- TELEPHONE SPLICE BOX
- GAS METER
- GASLINE RISER
- WATER METER
- BOLLARD
- DRAINAGE DIRECTION
- MONITOR WELL
- AIR SPARGE WELL
- SOIL VAPOR EXTRACTION WELL
- E/E EDGE TO EDGE OF GRAVEL ROAD
- OE OVERHEAD ELECTRIC LINE
- E UNDERGROUND ELECTRIC LINE
- G GAS LINE
- T UNDERGROUND TELEPHONE LINE
- CENTERLINE TRAVELWAY
- 6' CHAIN LINK FENCE



Civil Engineering • Land Surveying • Landscape Architecture
www.smhconsultants.com
Manhattan, KS - HQ P: (785) 776-0541 • Dodge City, KS P: (620) 255-1952
Overland Park, KS P: (913) 444-9615 • Colorado Springs, CO P: (719) 428-8677
Drawn By: DBA Project #1912MN1375 DD #117 TDS #79



Legend

- - Existing Monitoring Well Location
MW1
- - CP1 - Continuous Probe Locations
- - EC1 - Electric Conductivity Probe Locations
- - Soil Vapor Extraction Wells
SVE1
- - Air Sparge Wells
AS1
- - Active AST or Dispenser Location
- - Historical AST/UST or Dispenser Location
- - Property Line
- Blackwell - Property Owner Name
- OH— - Overhead Power Line
- SA— - Sanitary Sewer Line (~4' deep)
- BT— - Buried Cable/Telephone Line (~3' deep)
- W— - Water Line (~4' deep)
- G— - Gas Line (~3' deep)
- BE— - Buried Electric Line (~2' deep)
- FO— - Fiber Optic Line (~3' deep)
- PP - Power Pole
- LP - Light Pole
- BP - Brace Pole
- EO - Electrical Outlet
- WM - Water Meter
- EM - Electrical Meter
- GV - Gate Valve
- SB - Steel Bollard
- TS - Traffic Signal Manhole
- SS - Sanitary Sewer
- FH - Fire Hydrant
- - Tree

Scale In Feet
0 30 60

Site Detail Map
 City of Aurora
 Aurora, Kansas
 KDHE Project: U5-015-13668
 Remedial Design Report
 CGP Project #19876K
 Prepared By: MK Date: 12-24-2019
 Reviewed By: MK Date: 12-24-2019
 Figure 1.4
 CGP, Inc. PO Box 23, Wahoo, NE 68066