



Weatherford[®]

COMPOSITE LOG

COMPANY

SHAKESPEARE OIL CO., INC.

WELL

SCHOWALTER #8-12

FIELD

BECKLEY NORTH

PROVINCE/COUNTY

SCOTT

COUNTRY/STATE

U.S.A. / KANSAS

LOCATION

SE NW SE SE 985' FSL & 940' FEL

SEC 12

TWP 18S

RGE 32W

Other Services

Latitude

38.500277

NONE

Longitude

-100.800000

API Number

15-171-21253

Permanent Datum GL, Elevation 2962 feet

Log Measured From KB

Drilling Measured From KB

Date

26-JUN-2019

ONE

Elevations:
KB 2972.00
DF 2970.00
GL 2962.00

Run Number

17937-248748599

Service Order

4650.00 feet

Depth Driller

4649.00 feet

Depth Logger

4646.00 feet

First Reading

265.00 feet

Last Reading

265.00 feet

Casing Driller

265.00 feet

Casing Logger

265.00 feet

Bit Size

7.875 inches

Hole Fluid Type

WATER-BASED

Density / Viscosity

9.10 lb/USg 46.00 sec/qt

PH / Fluid Loss

10.00 8.80 ml/30Min

Sample Source

FLOWLINE

Rm @ Measured Temp

0.98 @ 96.0 ohm-m

Rmf @ Measured Temp

0.78 @ 96.0 ohm-m

Rmc @ Measured Temp

1.18 @ 96.0 ohm-m

Source Rmf / Rmc

CALC CALC

Rm @ BHT

0.78 @122.0 ohm-m

Time Since Circulation

4 HOURS

Max Recorded Temp

122.00 deg F

Equipment / Base

13057 ELRENO

Recorded By

MATT MCGLOTHLIN

Witnessed By

VERN SCHARG

BOREHOLE RECORD

Last Edited: 26-JUN-2019 21:10

Bit Size inches	Depth From feet	Depth To feet
7.875	265.00	4650.00

CASING RECORD

Type	Size inches	Depth From feet	Shoe Depth feet	Weight pounds/ft
SURFACE	8.625	0.00	265.00	24.00

REMARKS

- LOGGING SOFTWARE: 18.01.6830
- TOOLSTRING:
MCB, SHA, MCG, MML, MDN, MPD, SKJ, MFE, MAI LOGGED IN COMBINATION.
- HARDWARE USED:
MAI: TOW 0.5 INCH STANDOFFS.
MFE: ONE 0.5 INCH STANDOFF.
MDN: DUAL BOWSPRING.
MPD: 8 INCH PROFILE PLATE.
- 2.71 G/CC DENSITY MATRIX USED TO CALCULATE POROSITY.
- ALL INTERVALS LOGGED AND SCALED PER CUSTOMER'S REQUEST.
NEUTRON / DENSITY / MICROLOG = TD - 3600'.
GAMMA RAY / INDUCTION / SP / CALIPER = TD - SURFACE CASING.
- TOTAL HOLE VOLUME FROM TD TO SURFACE CASING = 1820 CU FT

DST Uphole Tension
pounds

5000 0

Replay
Scale
1:240

Array Ind. Two Res Rt
ohm metres

0.20 2000
1 10 100 1000

254

Casing
Shoe

← BIT

RTAT
R85T
R60T
R40T
R30T
R20T

300

FEFC

← CLDC

← SPCG
SMTU2 →

1800

95°

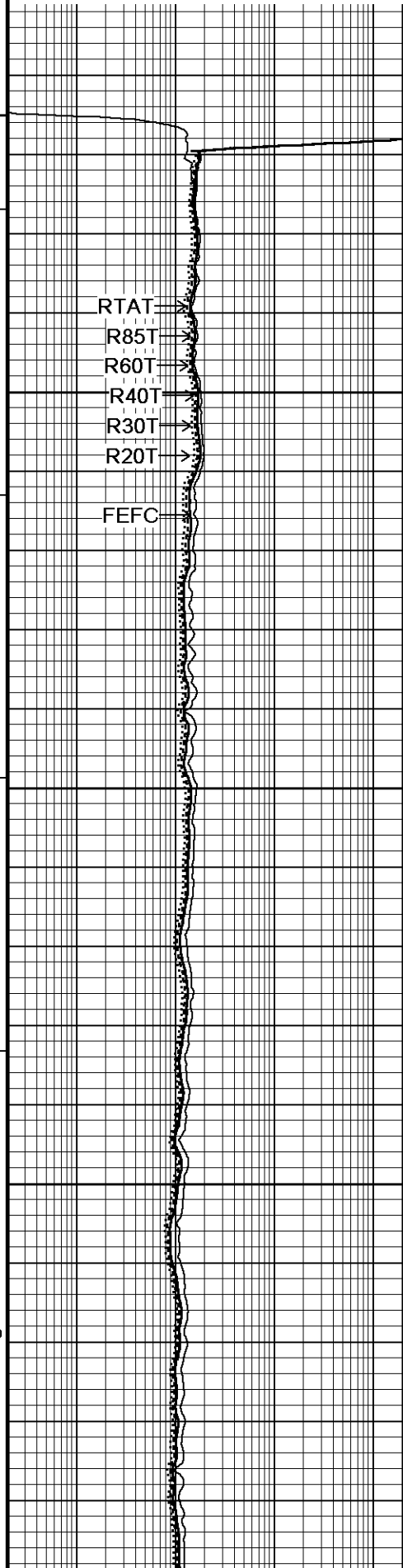
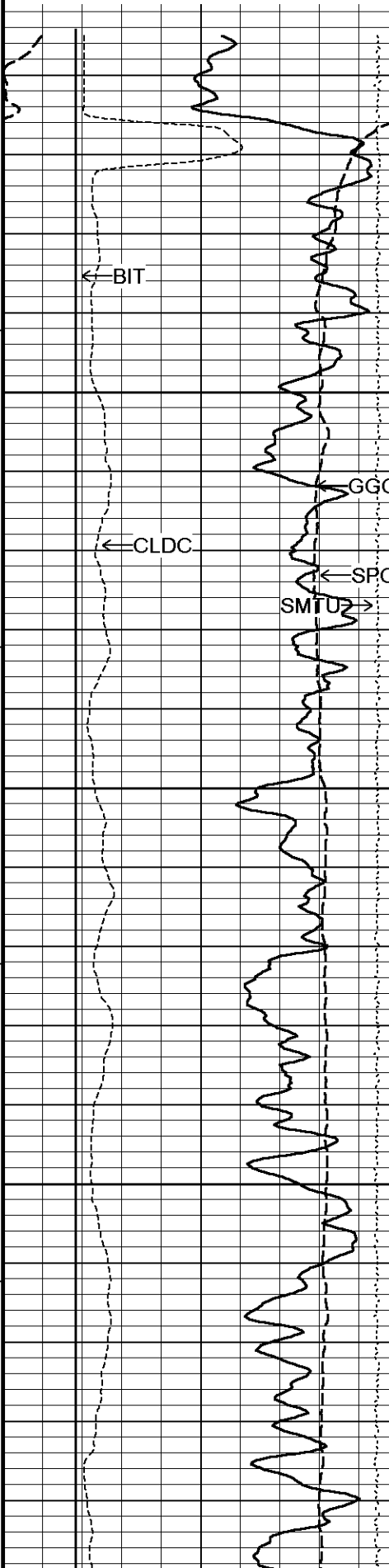
350

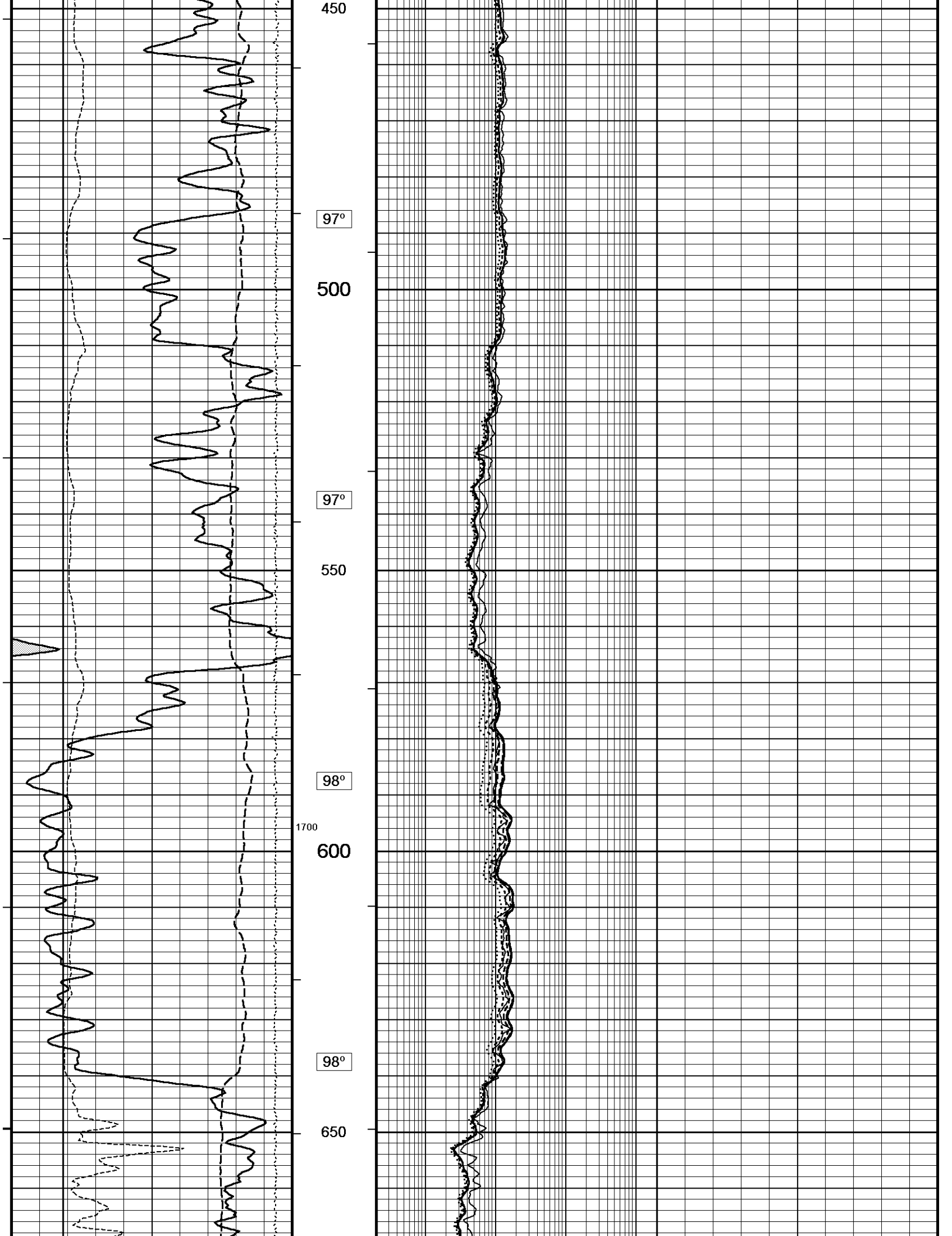
95°

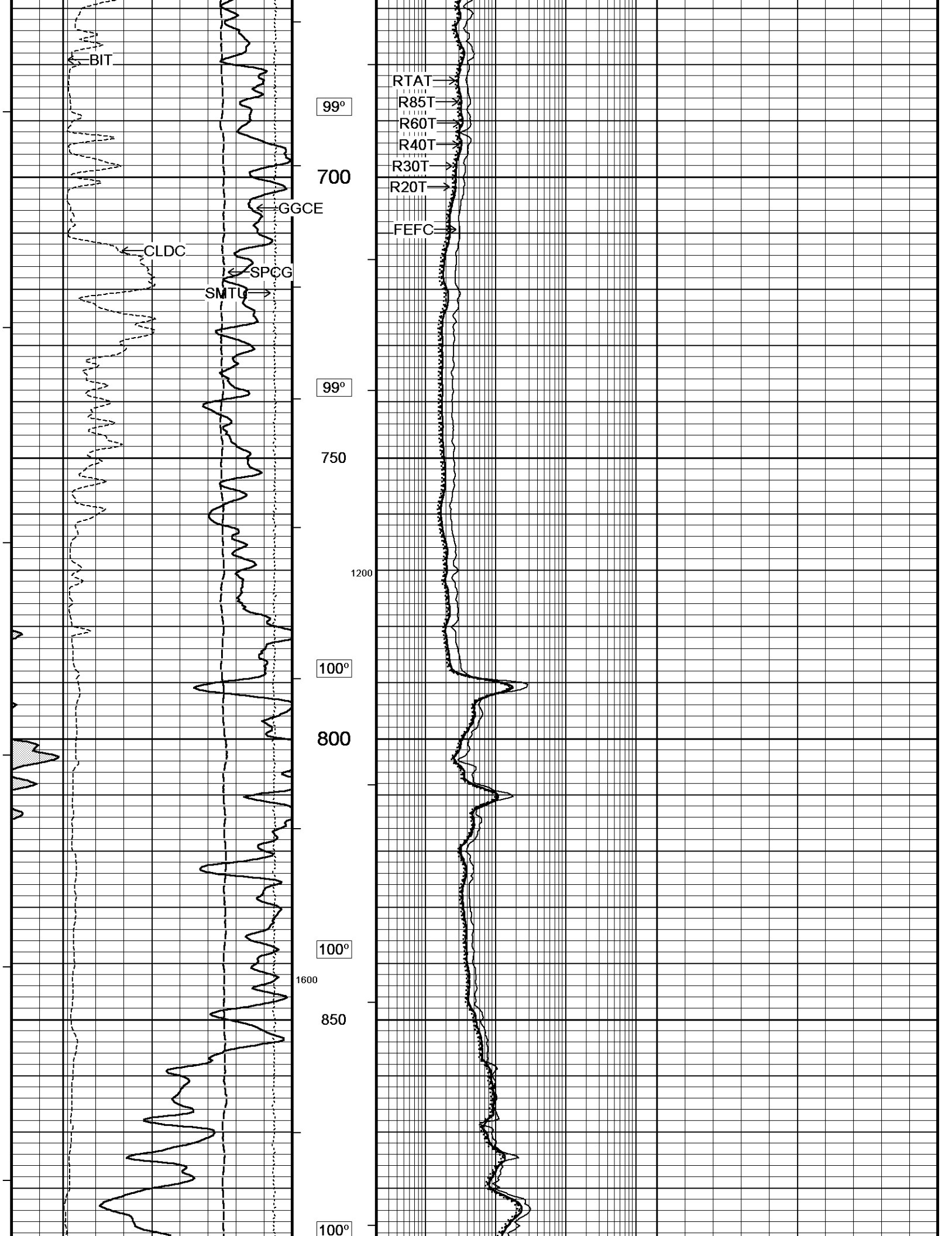
400

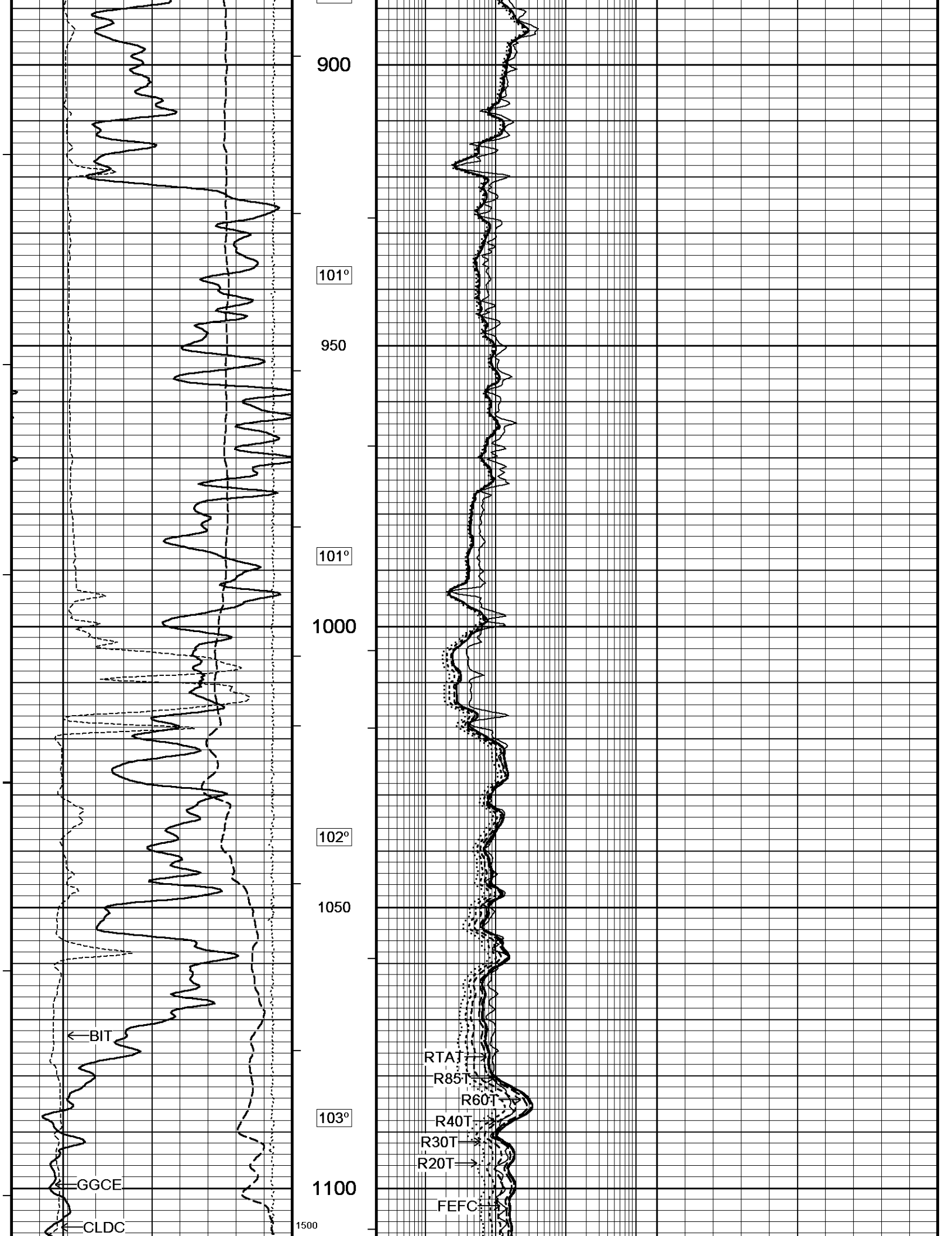
1300

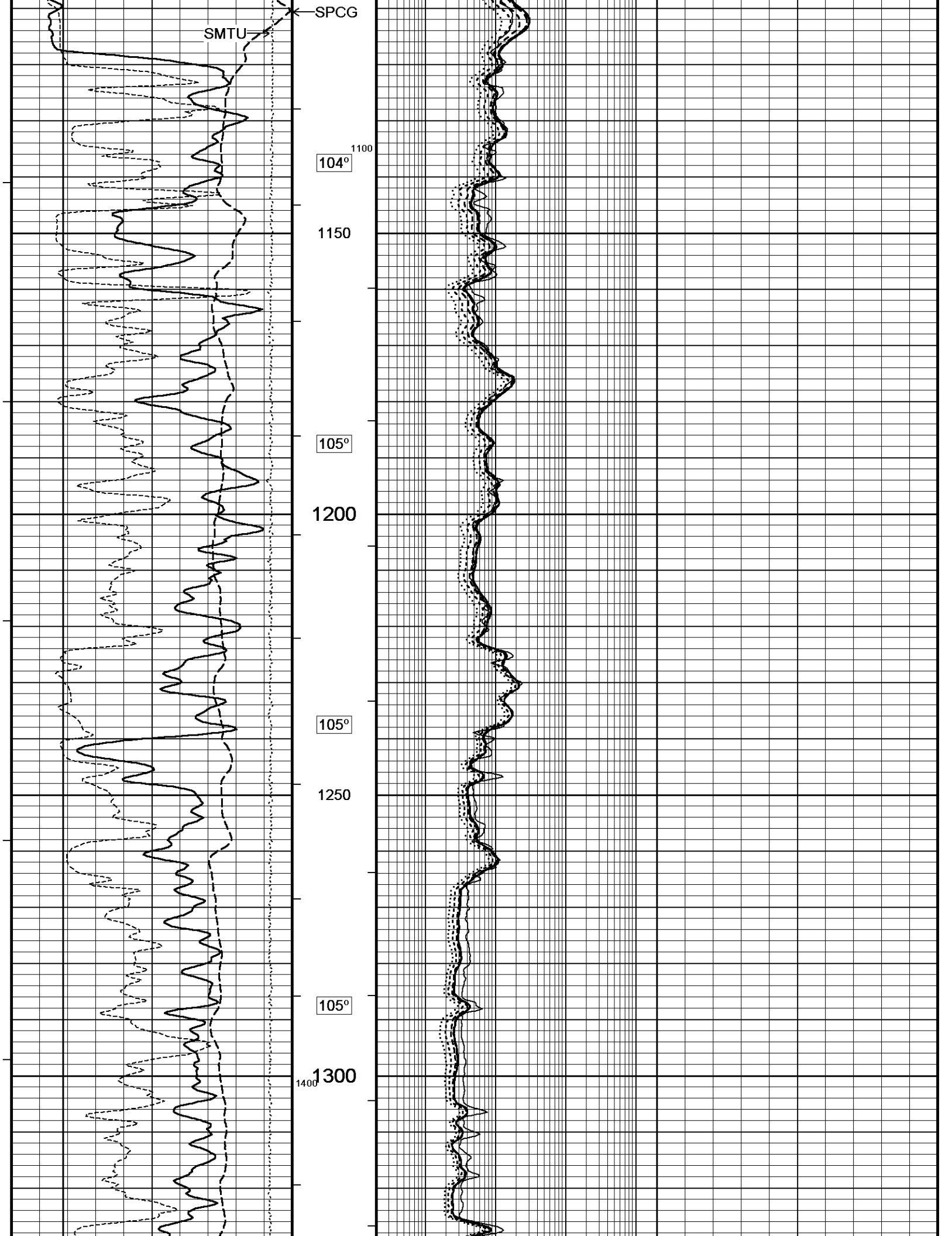
96°

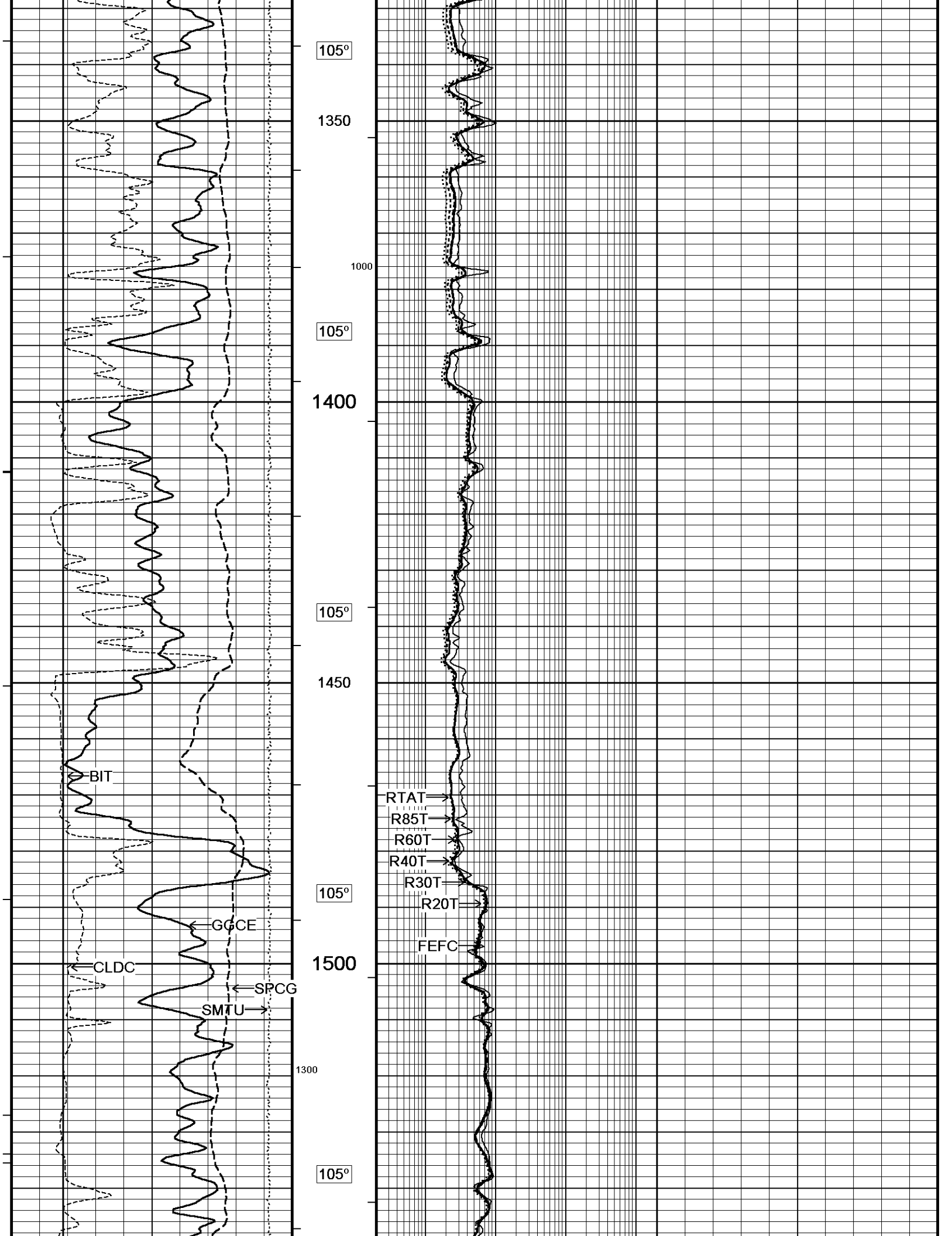


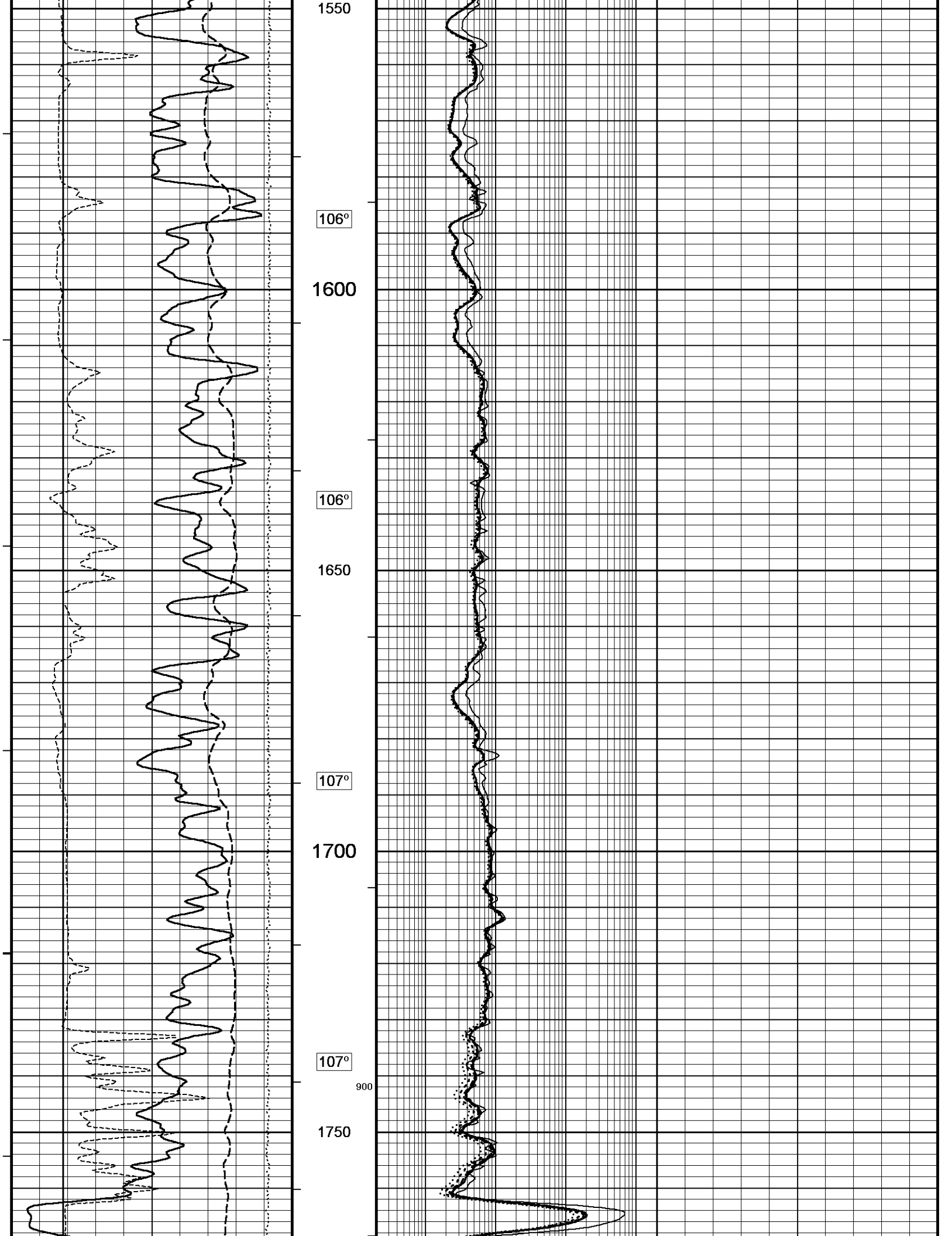


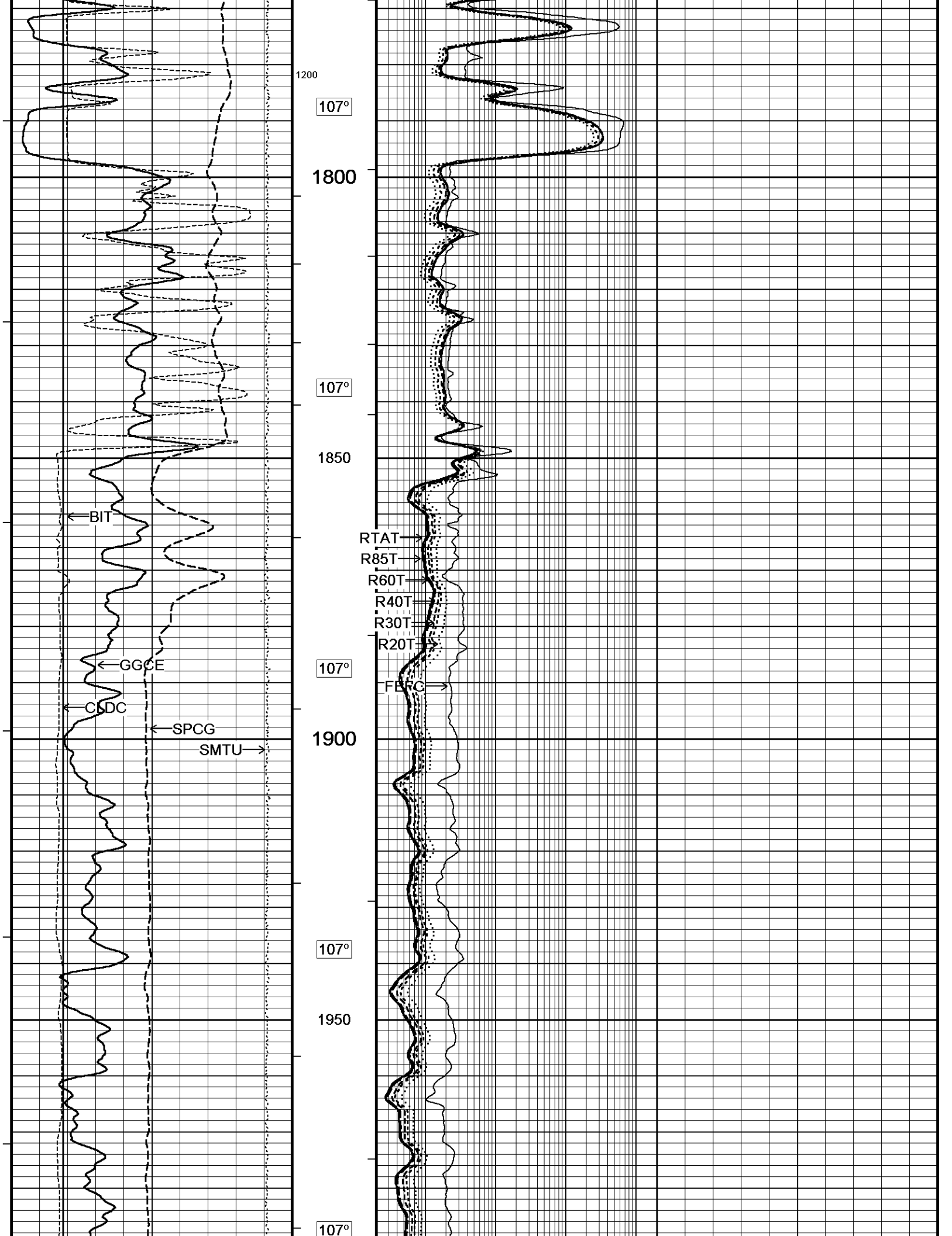


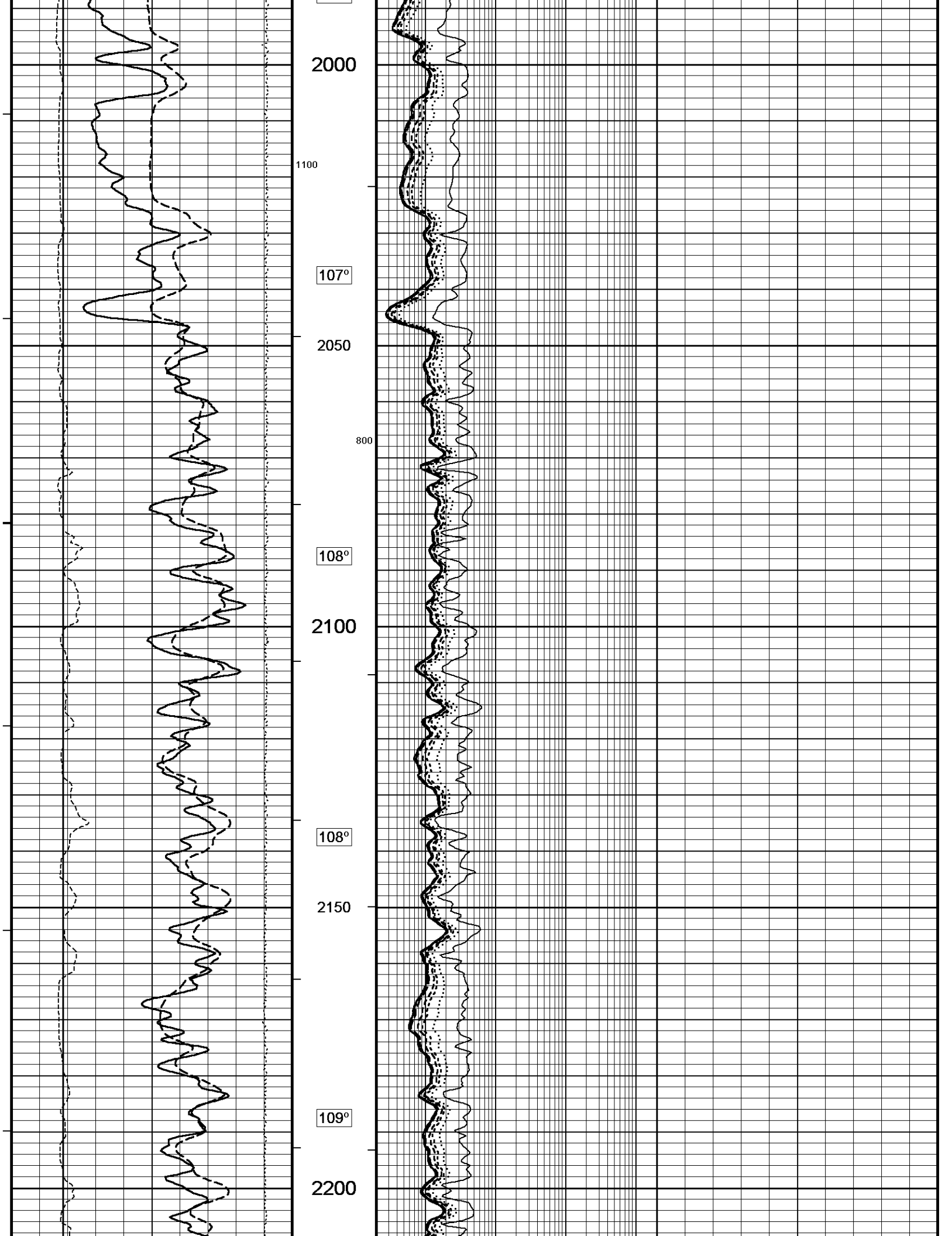


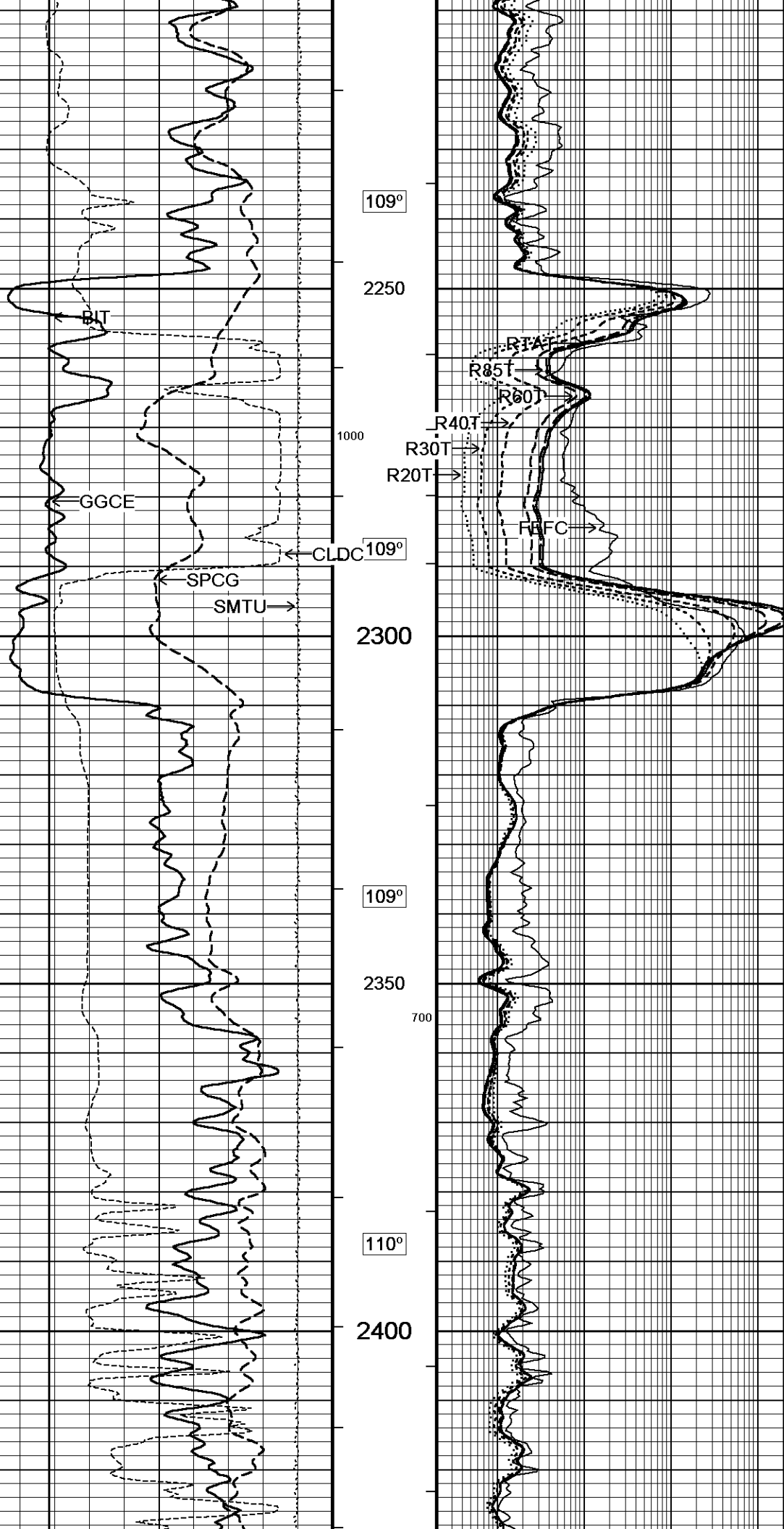


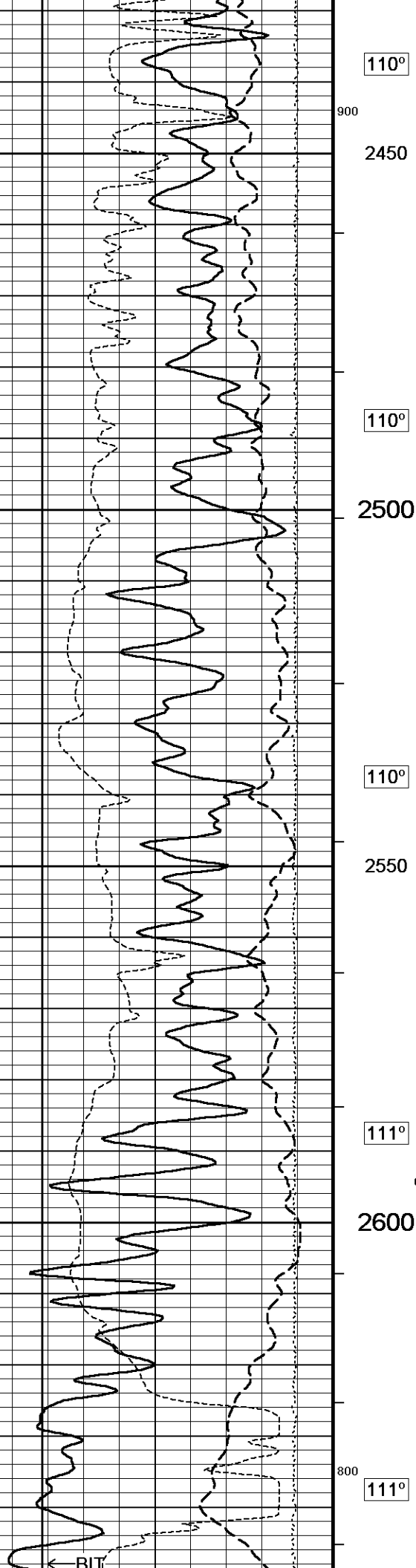












110°

900

2450

110°

2500

110°

2550

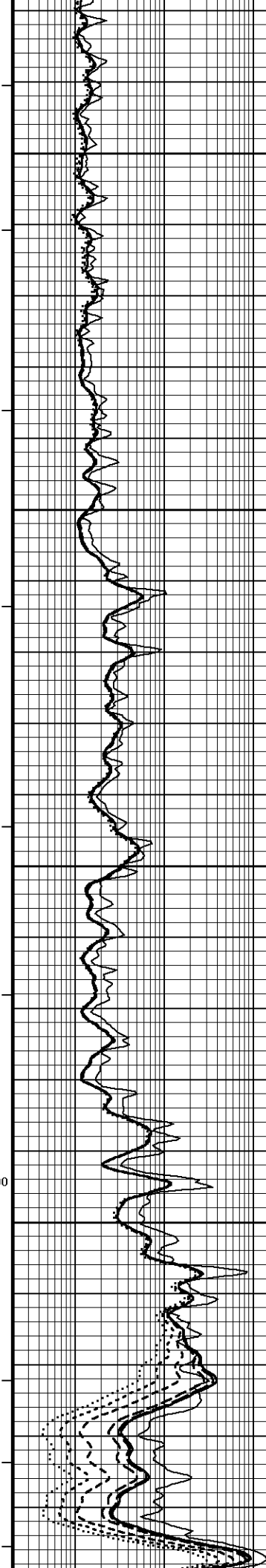
111°

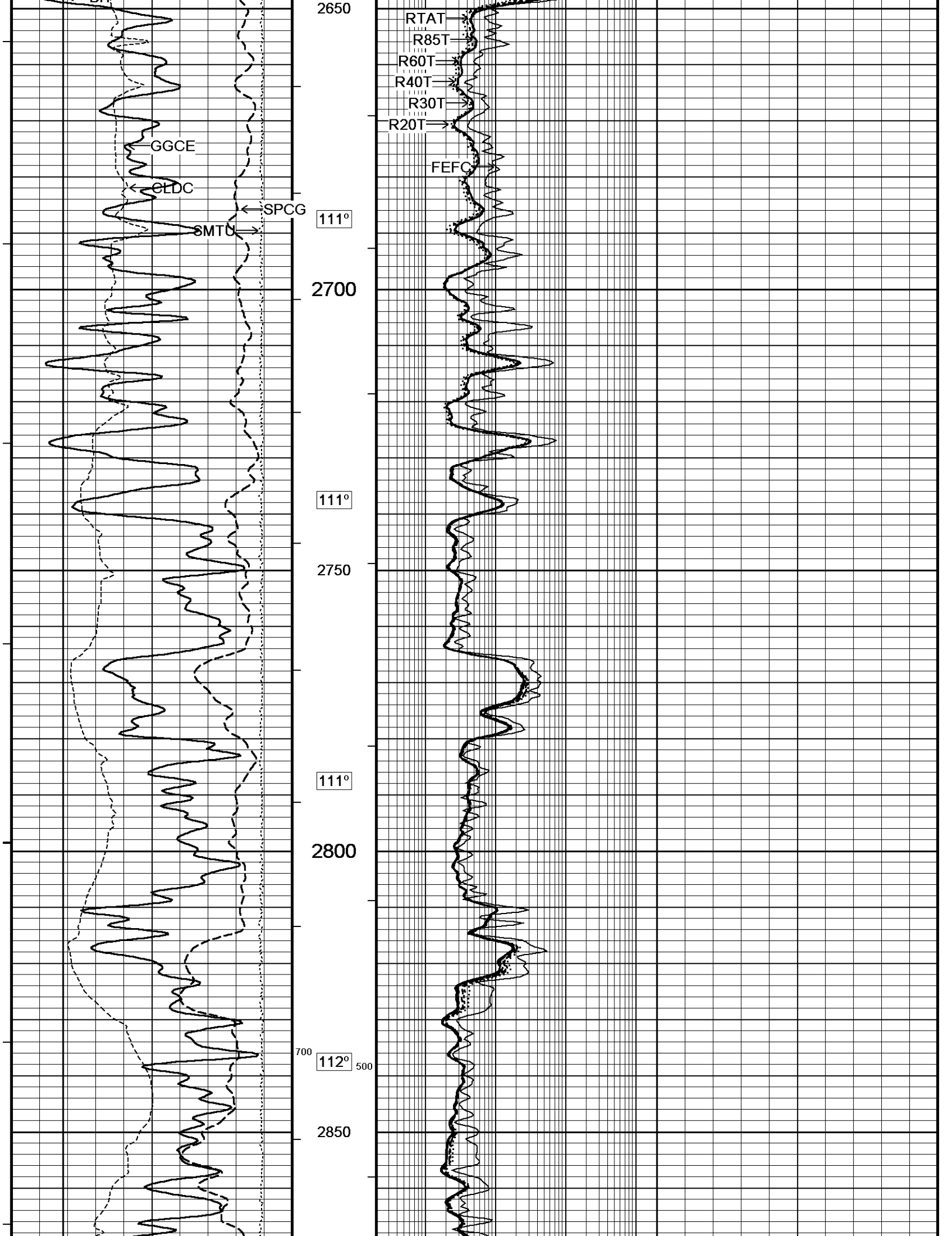
600

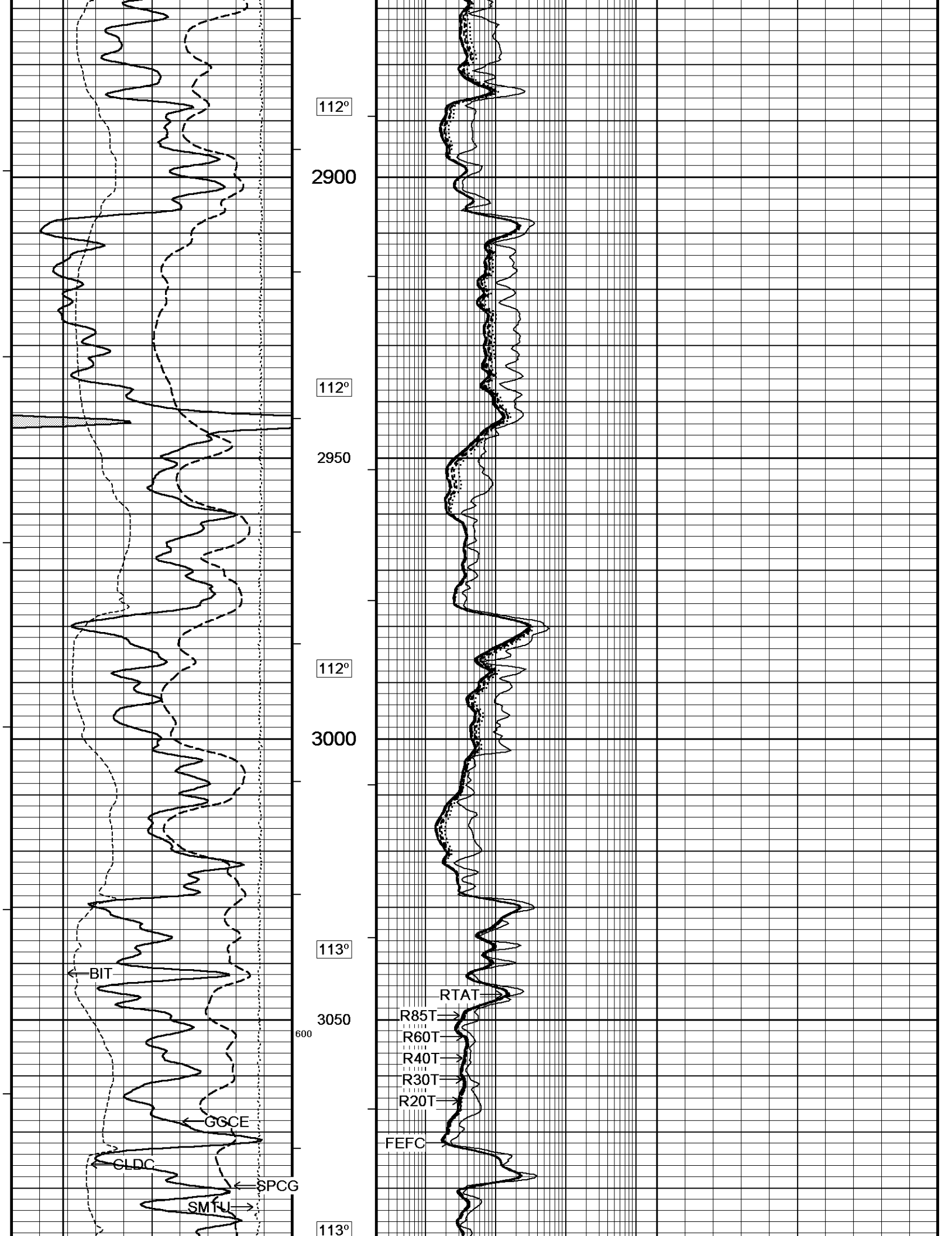
2600

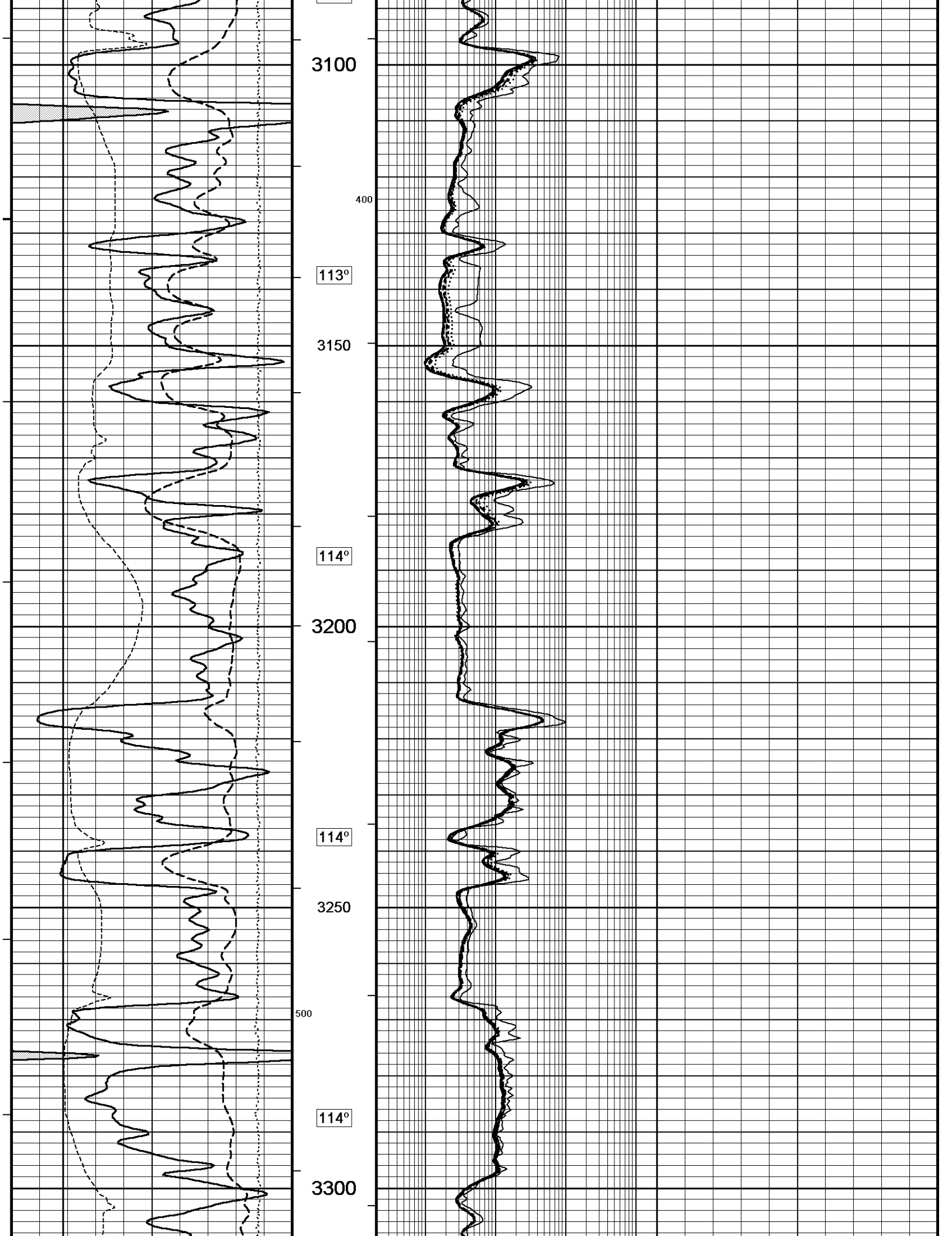
800

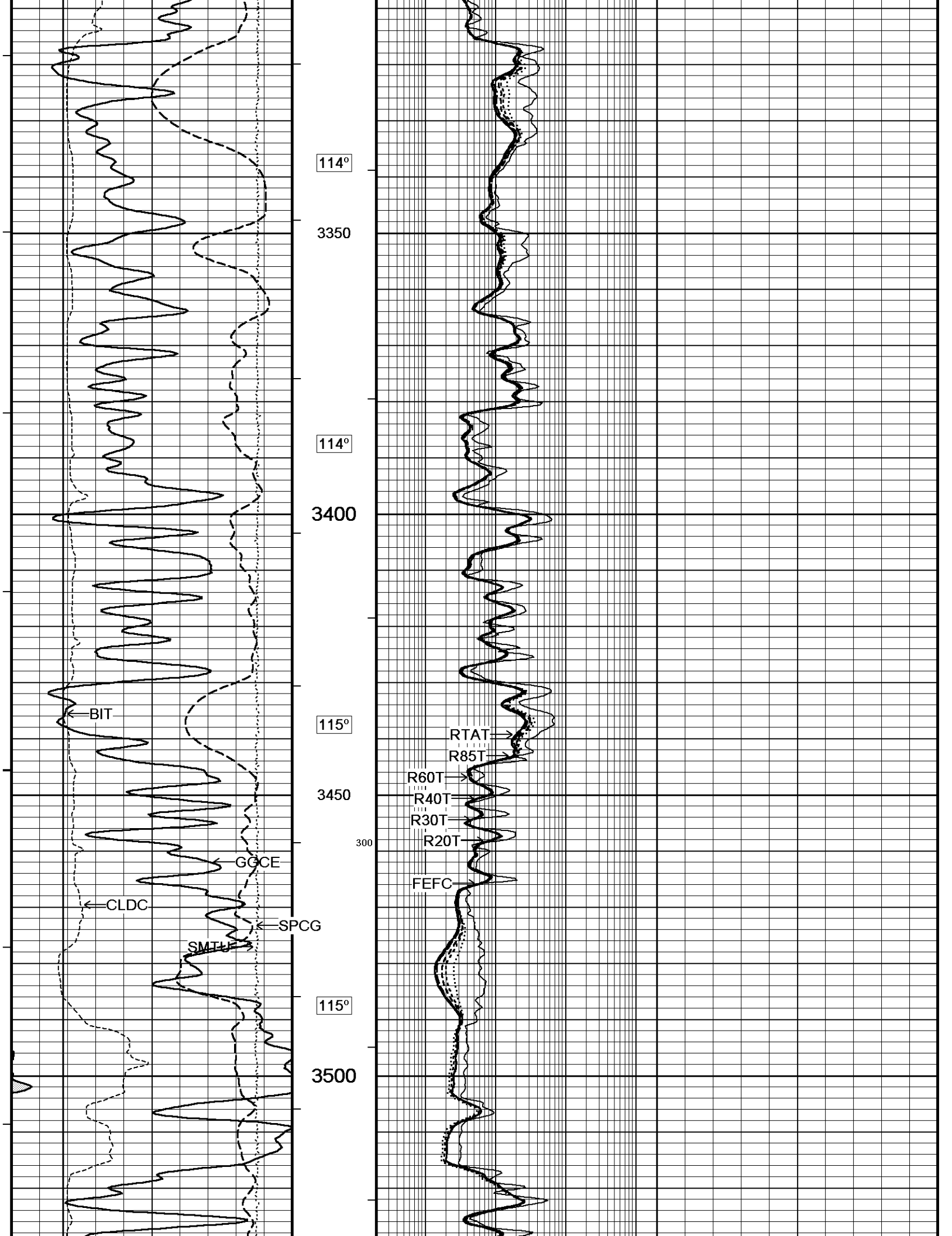
111°

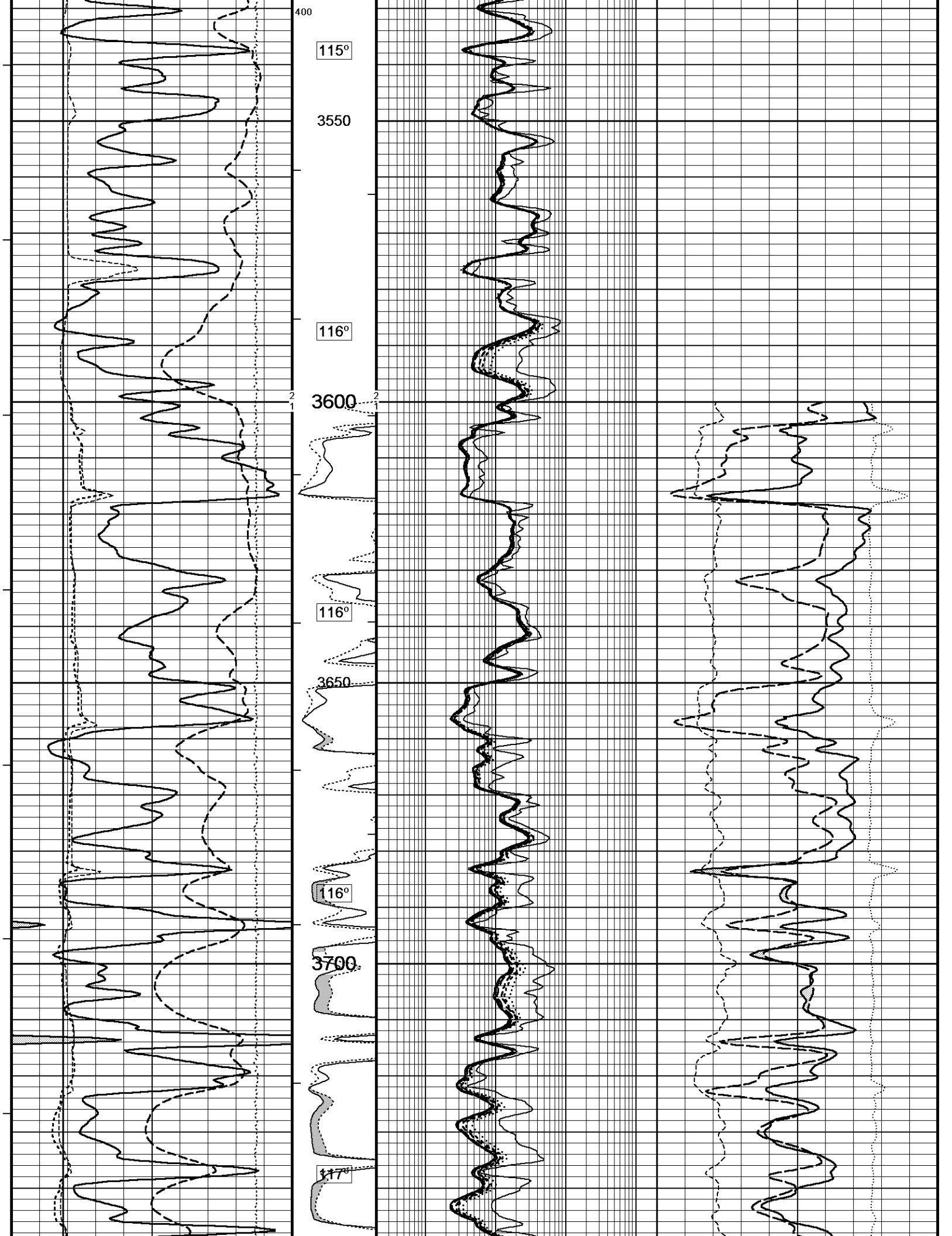


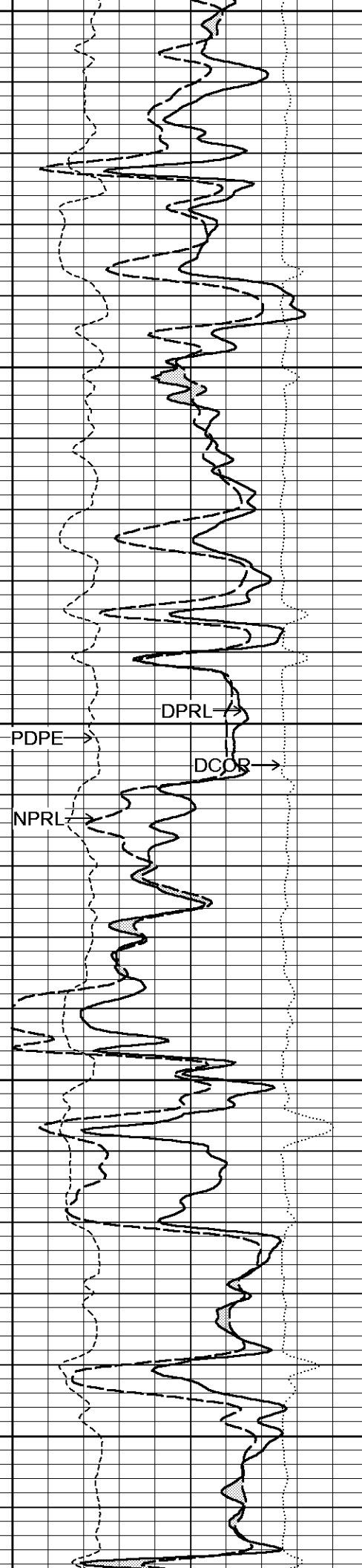
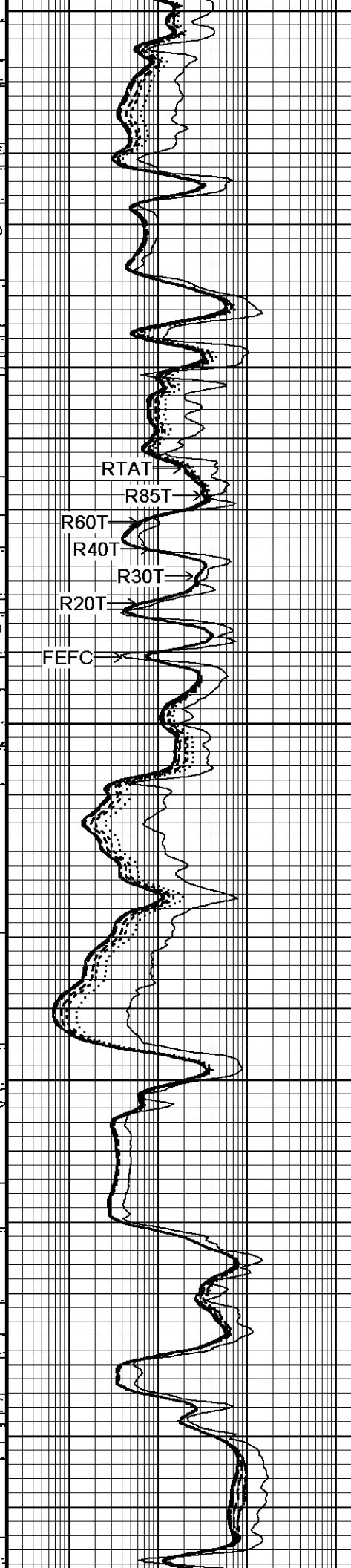
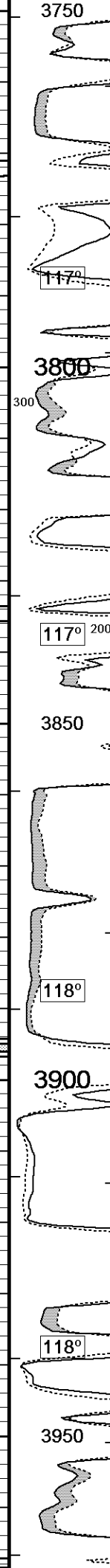
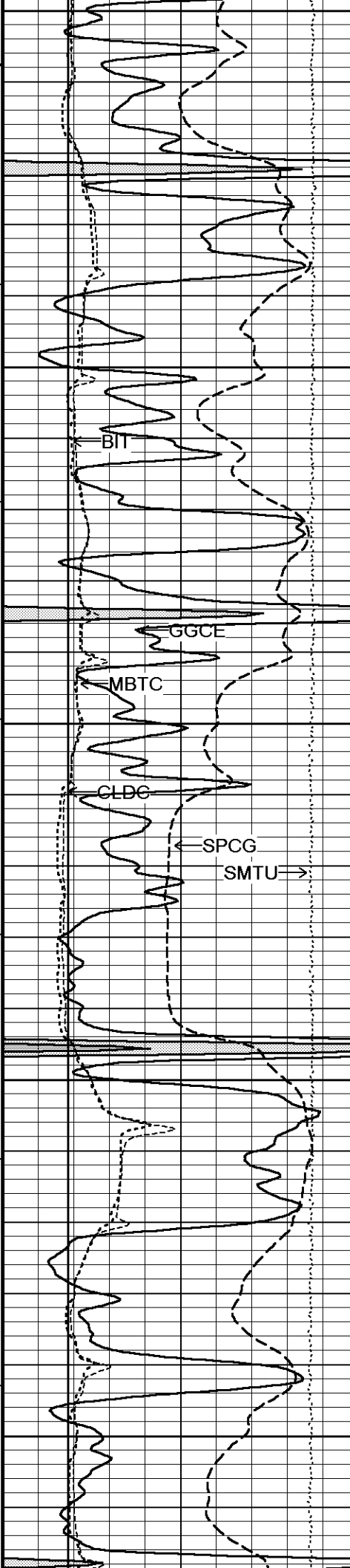


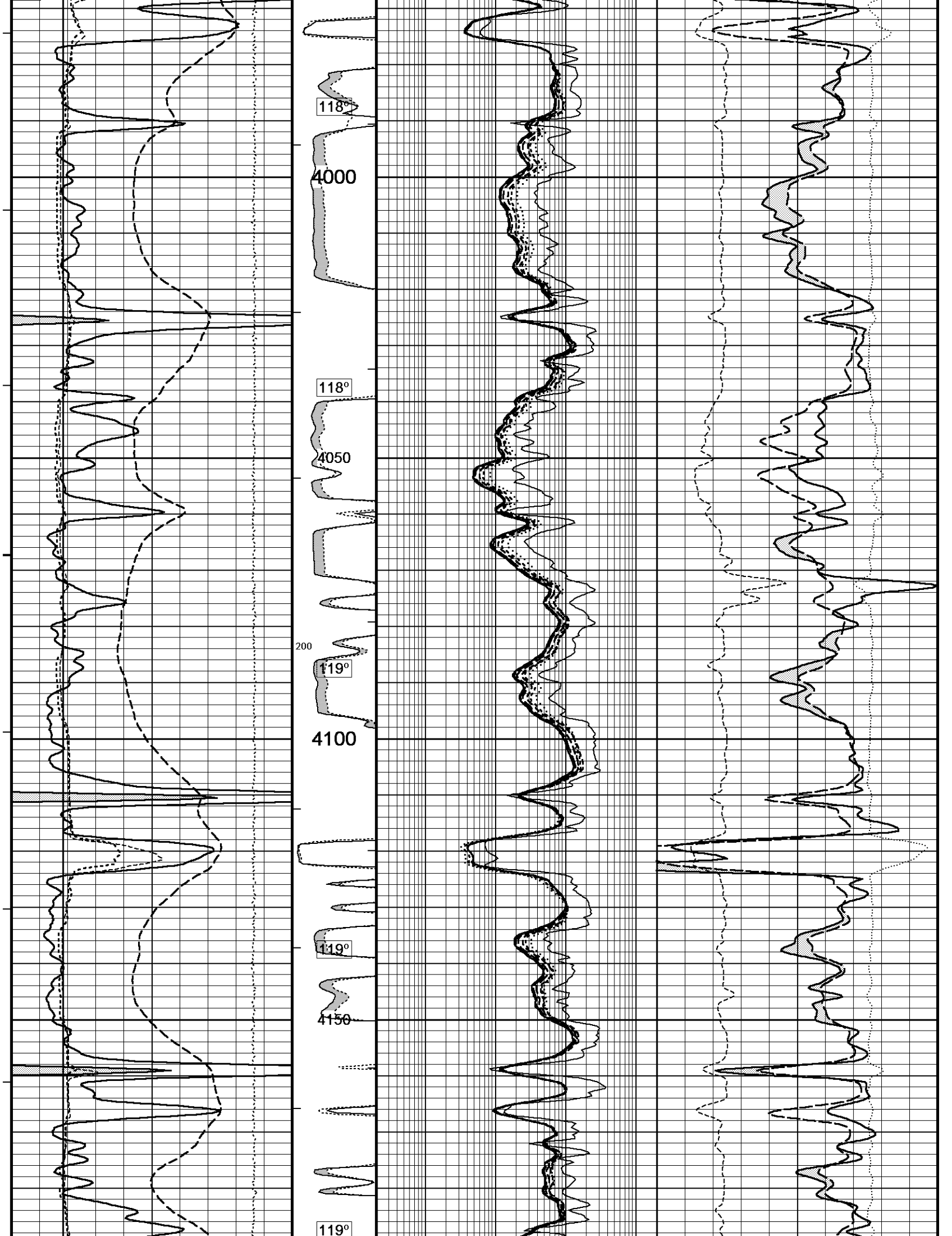


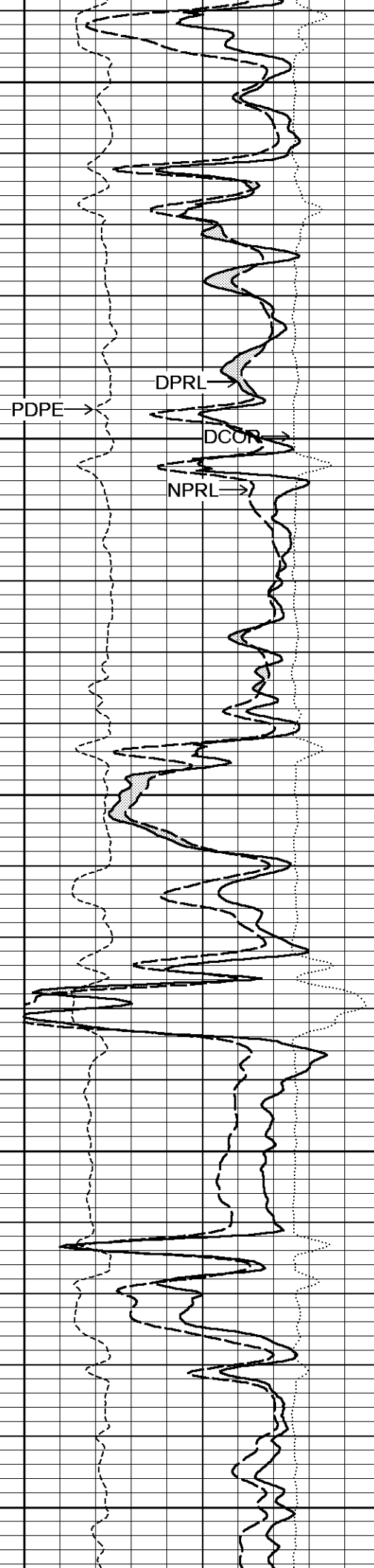
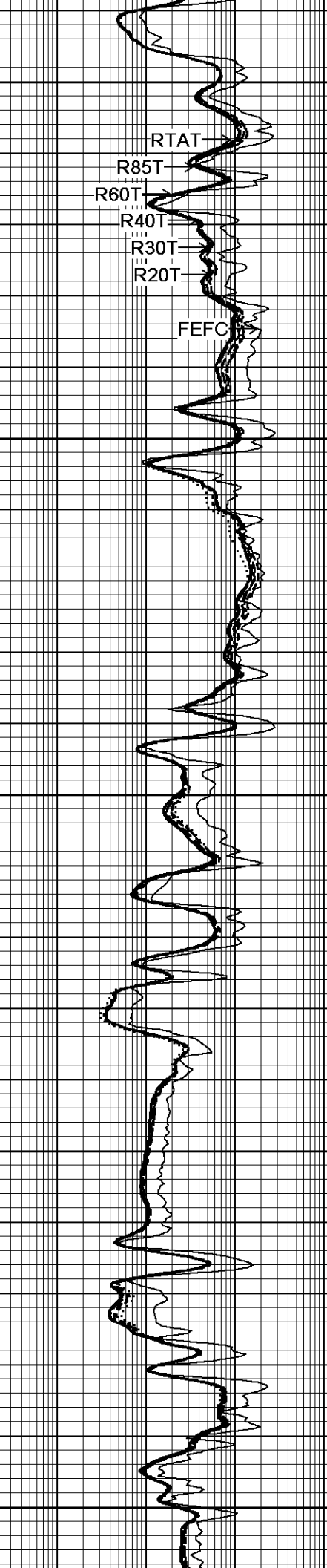
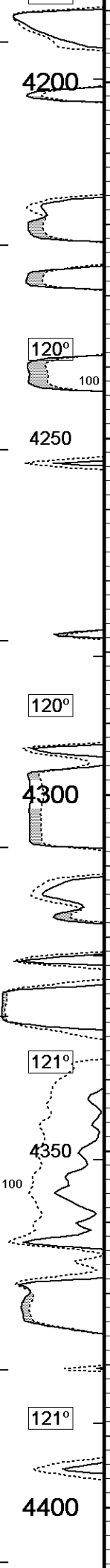


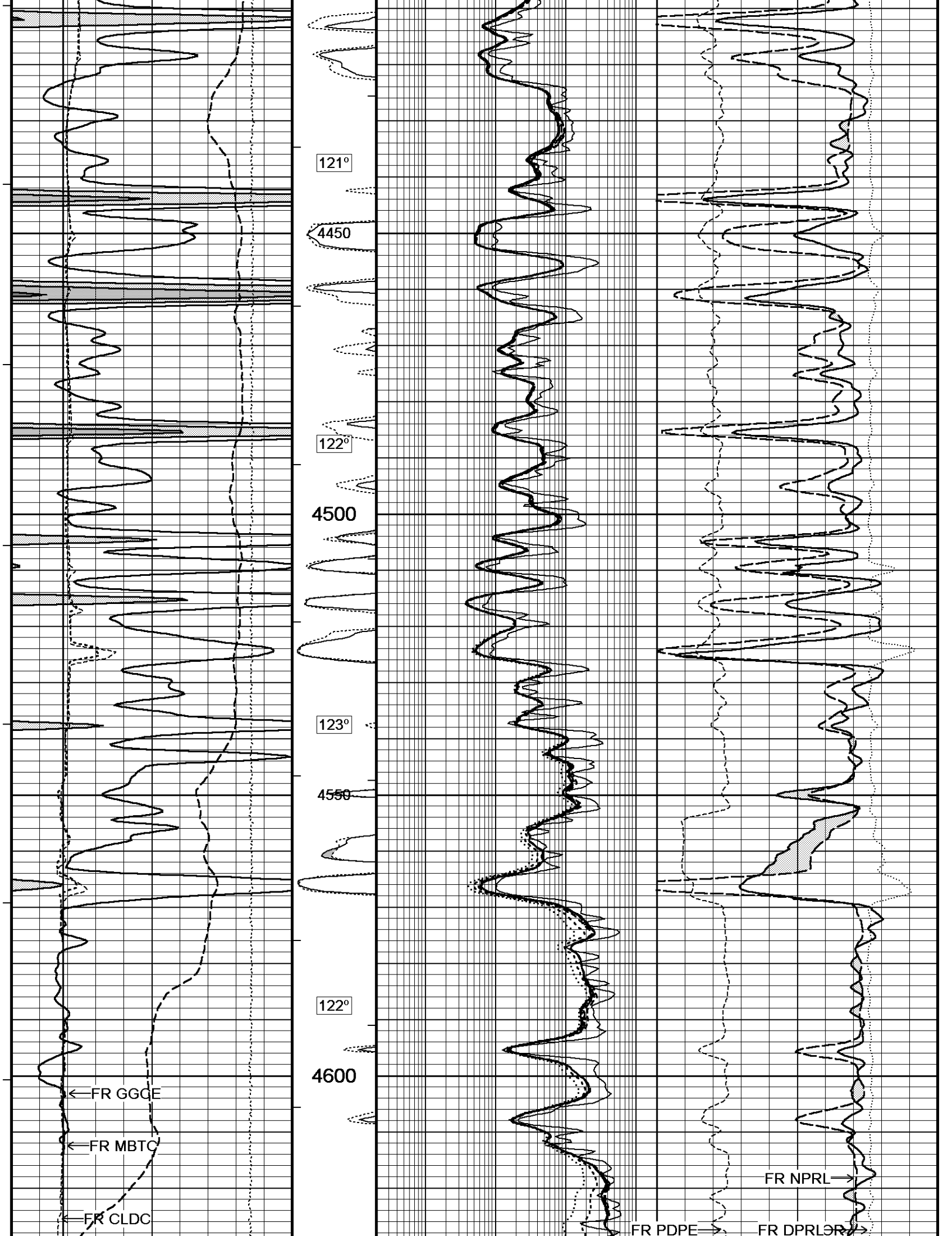


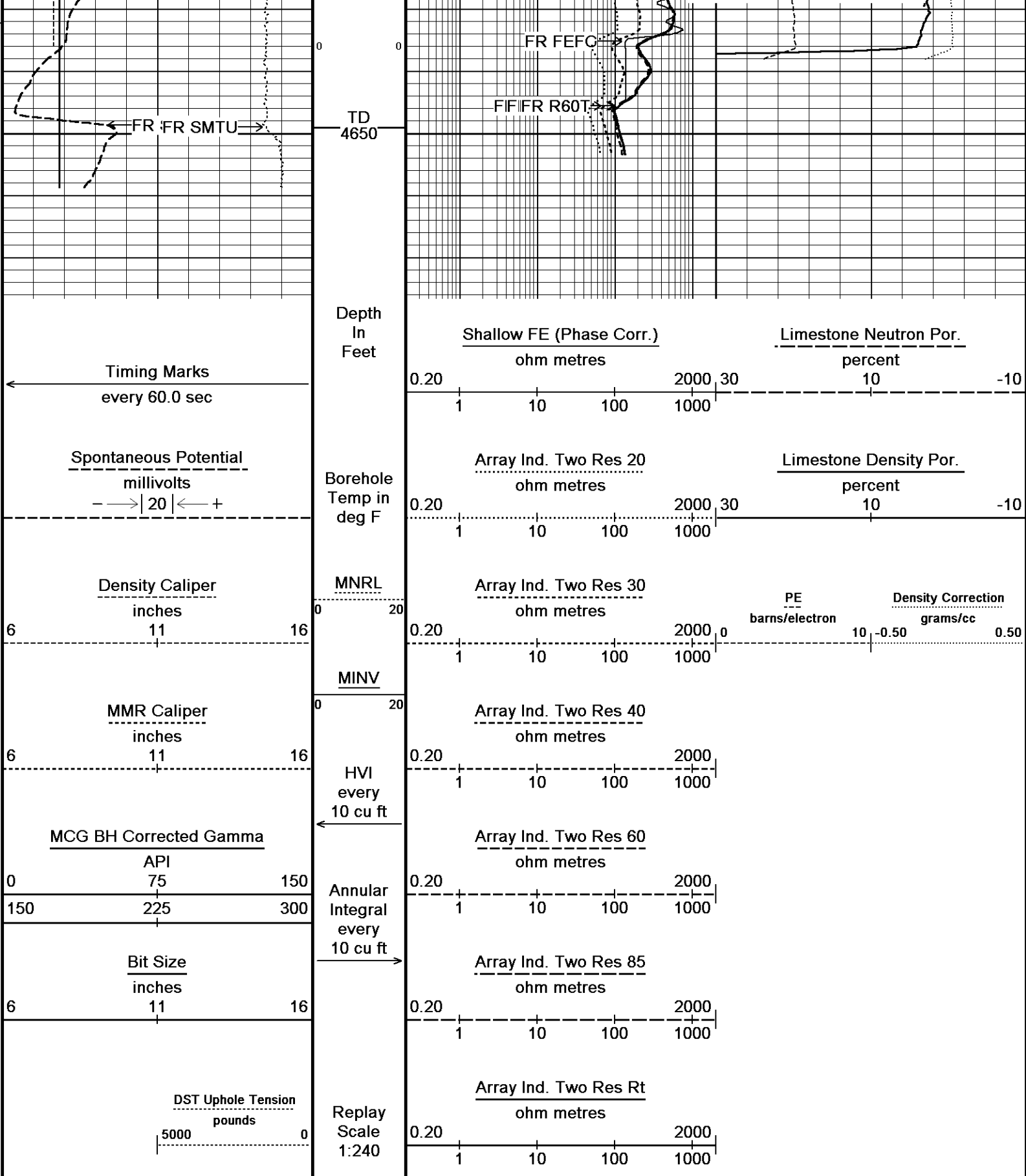










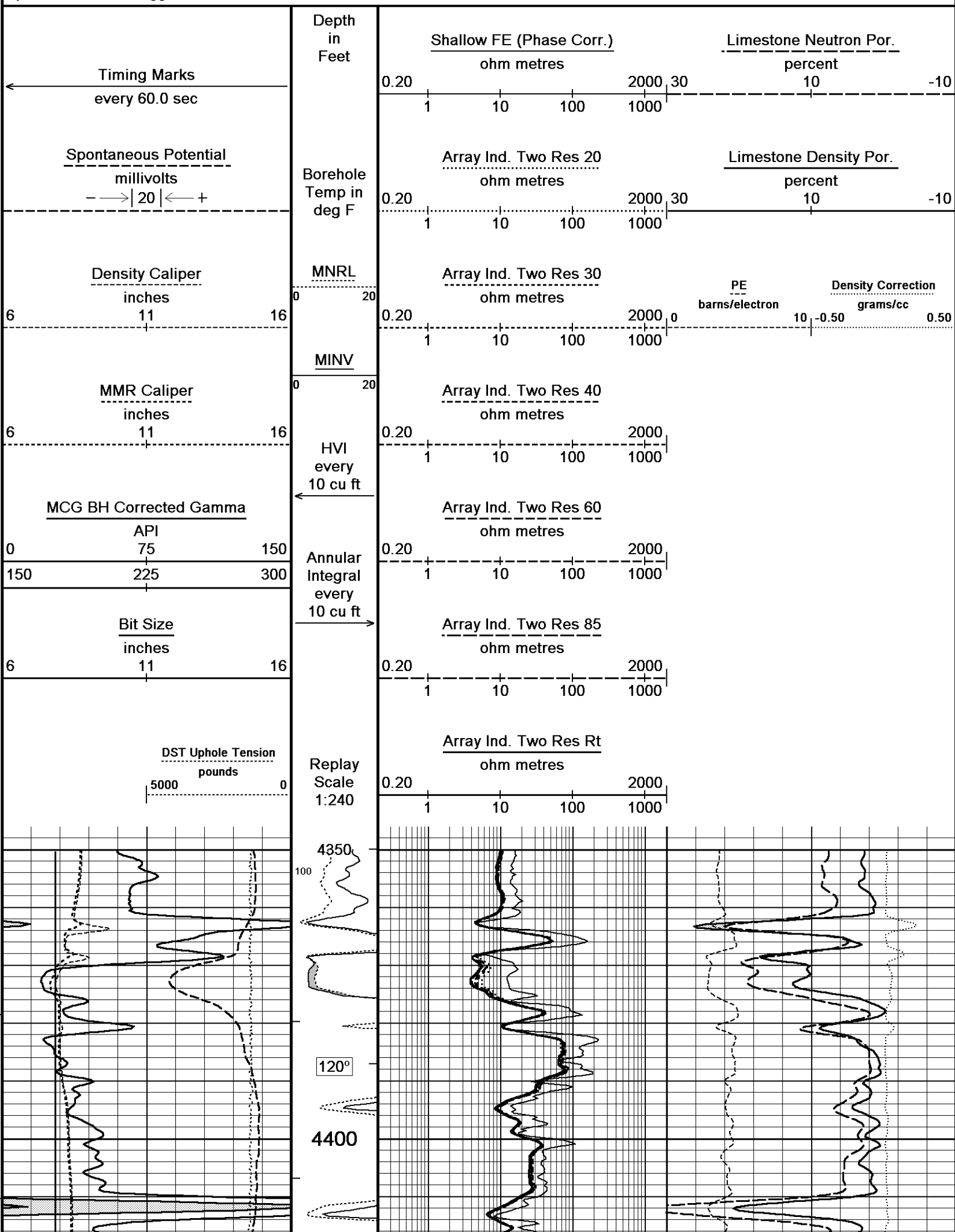


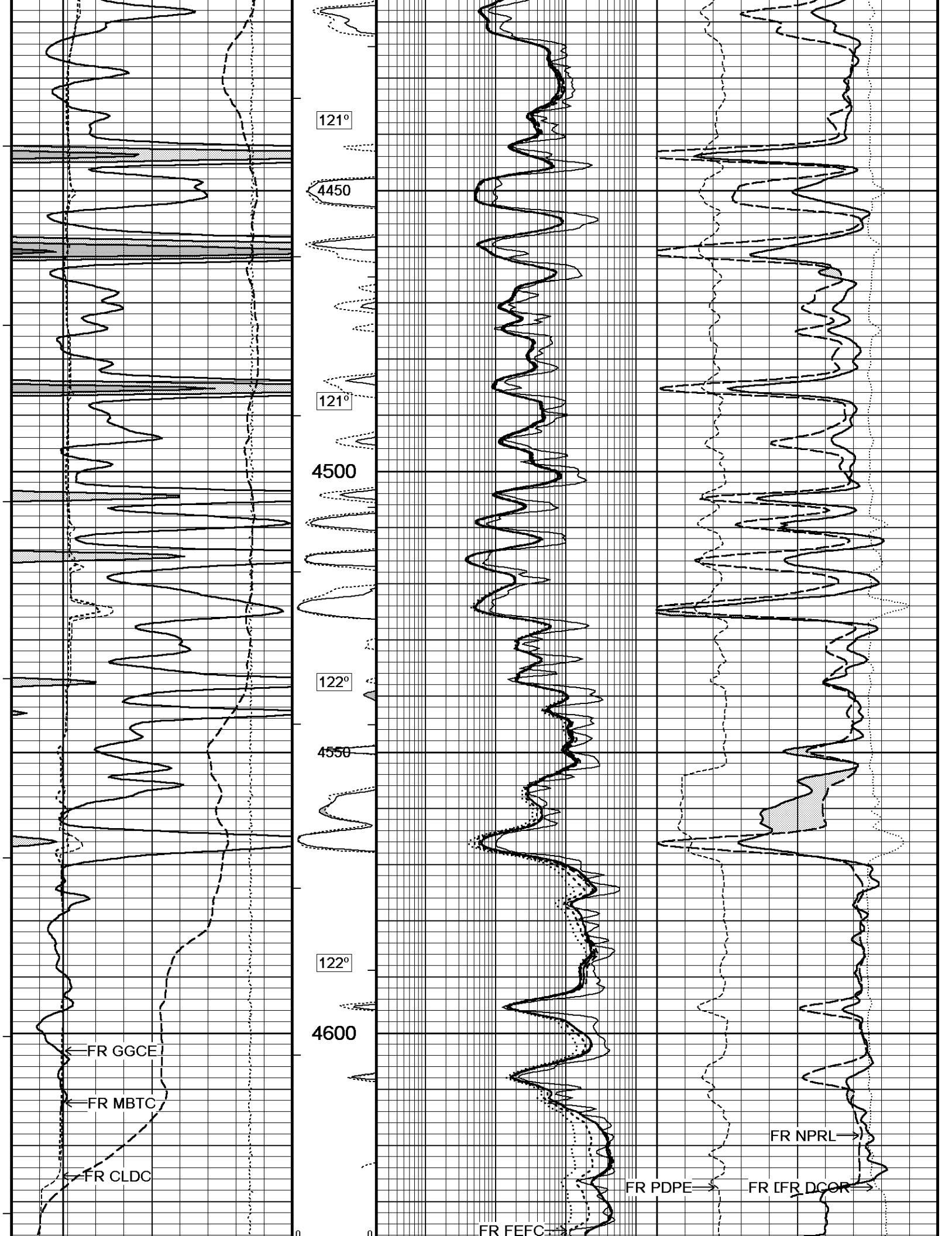
Depth Based Data - Maximum Sampling Increment 10.0cm
 Plotted on 27-JUN-2019 07:31
 Filename: C:\Users\DHELPI~1\AppData\Local\Temp\Weatherford PreView0\MAIN PASS 001.dta
 Recorded on 26-JUN-2019 22:04
 System Versions: Logged with 18.01.6830 Processed with 18.01.6830 Plotted with 14.04.4365

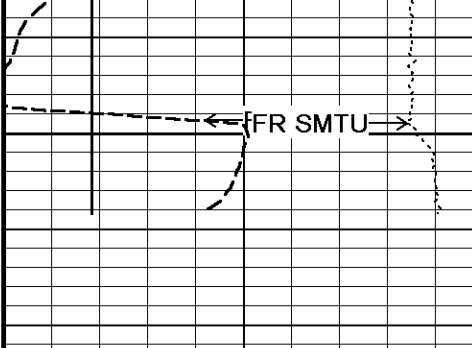
↑ **5 INCH MAIN PASS** ↑

↓ **5 INCH REPEAT PASS** ↓

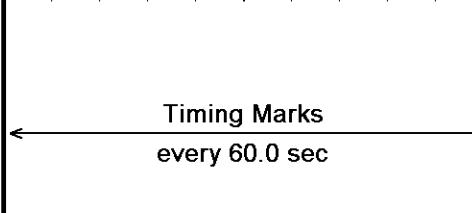
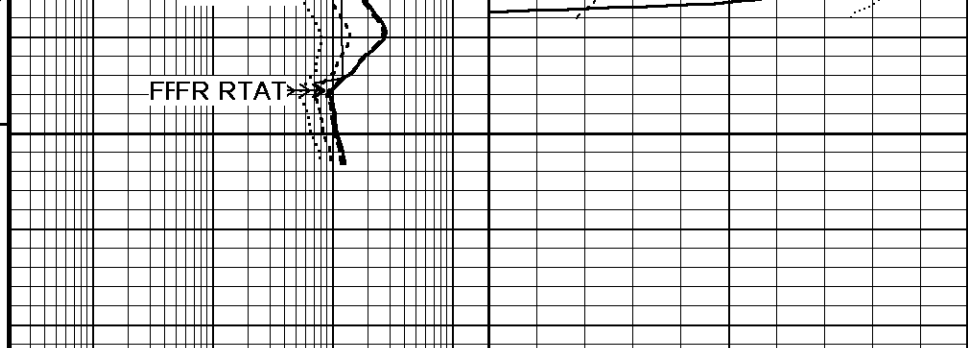
Depth Based Data - Maximum Sampling Increment 10.0cm
 Plotted on 27-JUN-2019 07:31



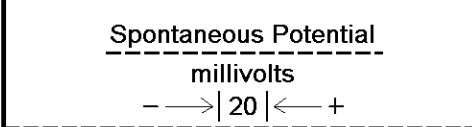
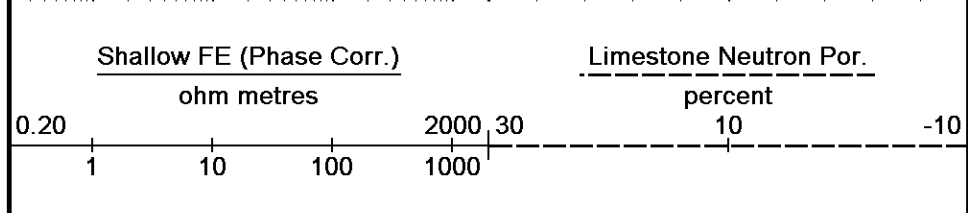




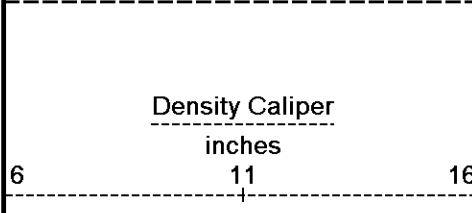
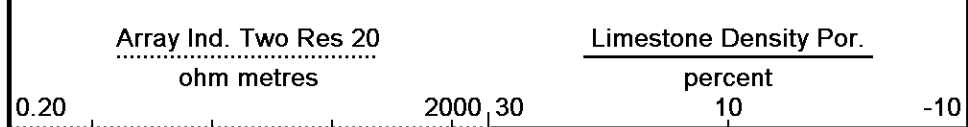
TD
4650



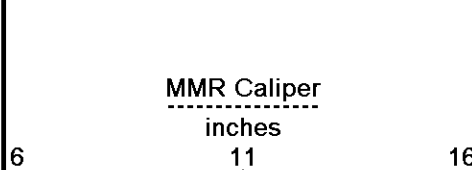
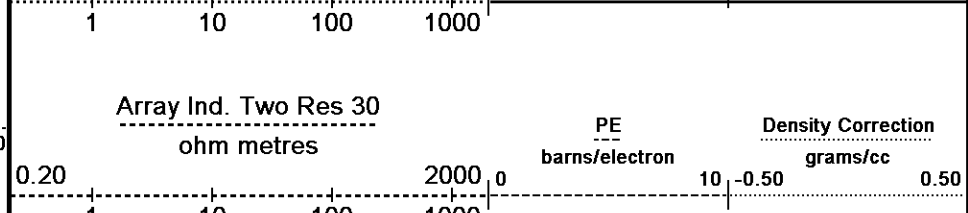
Depth in Feet



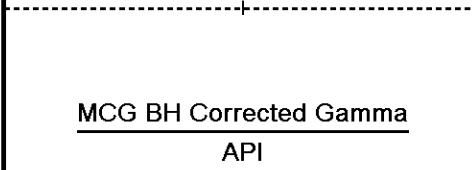
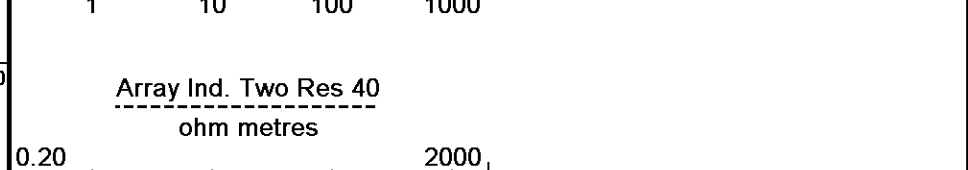
Borehole Temp in deg F



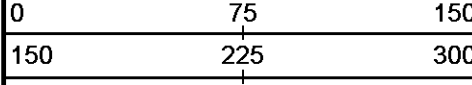
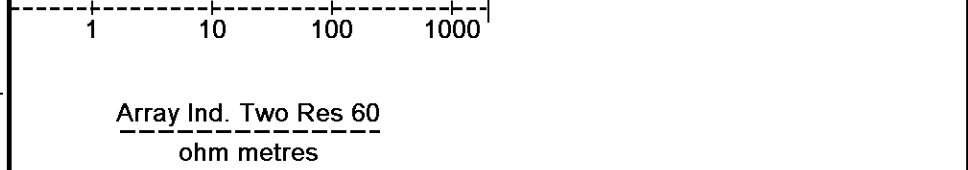
MNRL



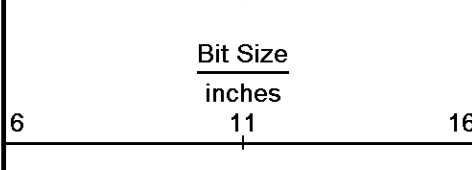
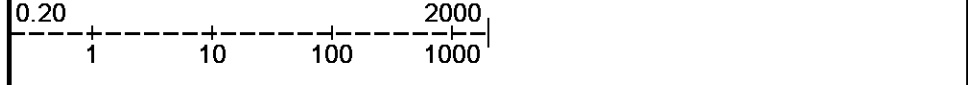
MINV



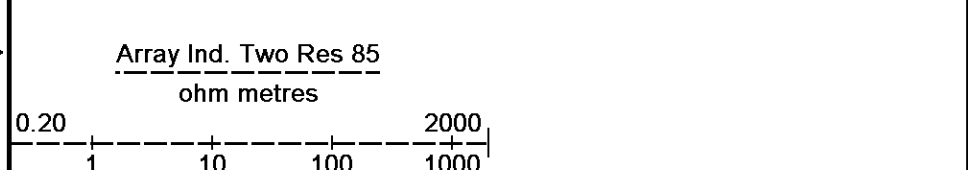
HVI every 10 cu ft



Annular Integral every 10 cu ft



Replay Scale 1:240



Depth Based Data - Maximum Sampling Increment 10.0cm
 Plotted on 27-JUN-2019 07:31
 Filename: C:\Users\DHELPI~1\AppData\Local\Temp\Weatherford PreView0\REPEAT PASS 001.dta
 Recorded on 26-JUN-2019 21:48
 System Versions: Logged with 18.01.6830 Processed with 18.01.6830 Plotted with 14.04.4365

↑ 5 INCH REPEAT PASS ↑

