



SUPERIOR
Hays,
Kansas

**MICRO
LOG**

Company MID-CONTINENT ENERGY
Well #1-21 SCHAUF
Field WILDCAT
County LANE
State KANSAS

Company MID - CONTINENT ENERGY OPERATING CO.
Well #1-21 SCHAUF
Field WILDCAT
County LANE State KANSAS

Location: 625' FSL & 1940' FWL
API #: 15-101-22185-0000
Other Services CDL/CNL DIL
Elevation
Permanent Datum GROUND LEVEL Elevation 2715
Log Measured From KELLY BUSHING 5' A.G.L.
Drilling Measured From KELLY BUSHING

Date	8/16/09		
Run Number	THREE		
Depth Driller	4700		
Depth Logger	4700		
Bottom Logged Interval	4698		
Top Log Interval	3600		
Casing Driller	8 5/8"@302'		
Casing Logger	304		
Bit Size	7 7/8		
Type Fluid In Hole	CHEMICAL MUD	CHLORIDES 1,900 PPM	
Density / Viscosity	9.2/53		
pH / Fluid Loss	10.5/8.4		
Source of Sample	FLOWLINE		
Rm @ Meas. Temp	.750@94F		
Rmf @ Meas. Temp	.563@94F		
Rmc @ Meas. Temp	.900@94F		
Source of Rmf / Rmc	MEASUREMENT		
Rm @ BHT	.578@122F		
Time Circulation Stopped	5 HOURS		
Time Logger on Bottom	11:30 A.M.		
Maximum Recorded Temperature	122F		
Equipment Number	0836		
Location	HAYS, KANSAS		
Recorded By	JEFF LUEBBERS		
Witnessed By	KEVIN KESSLER		

<<< Fold Here >>>

All interpretations are opinions based on inferences from electrical or other measurements and we cannot and do not guarantee the accuracy or correctness of any interpretation, and we shall not, except in the case of gross or willful negligence on our part, be liable or responsible for any loss, costs, damages, or expenses incurred or sustained by anyone resulting from any interpretation made by any of our officers, agents or employees. These interpretations are also subject to our general terms and conditions set out in our current Price Schedule.

Comments

THANK YOU FOR USING SUPERIOR WELL SERVICE HAYS, KANSAS (785)628-6395
DIRECTIONS
NESS CITY, KS. 22W. ON HWY 96 TO "TURKEY RED" RD., 7S. TO RD. "80", 1/2W., N. INTO

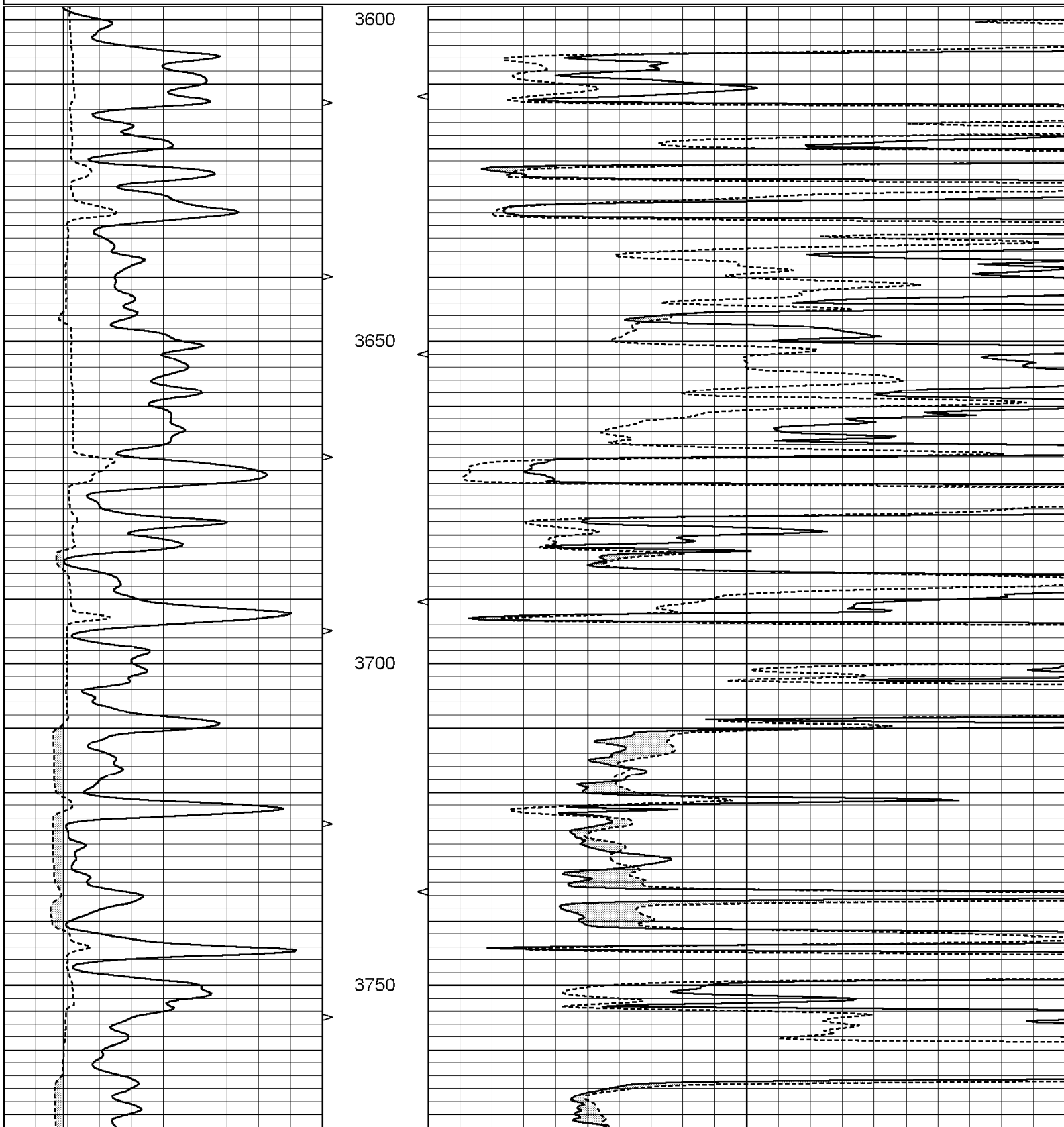


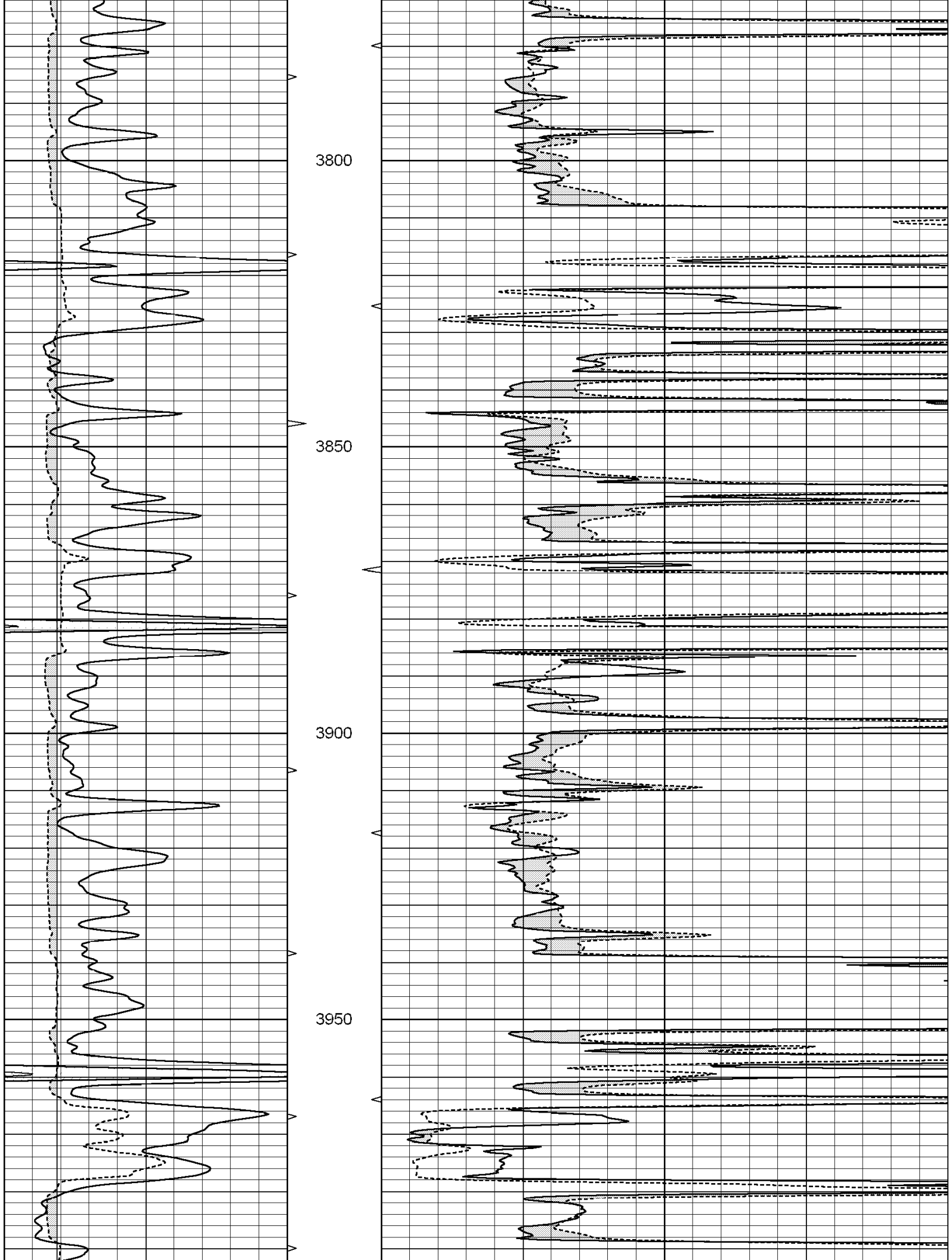
SUPERIOR
Hays,
Kansas

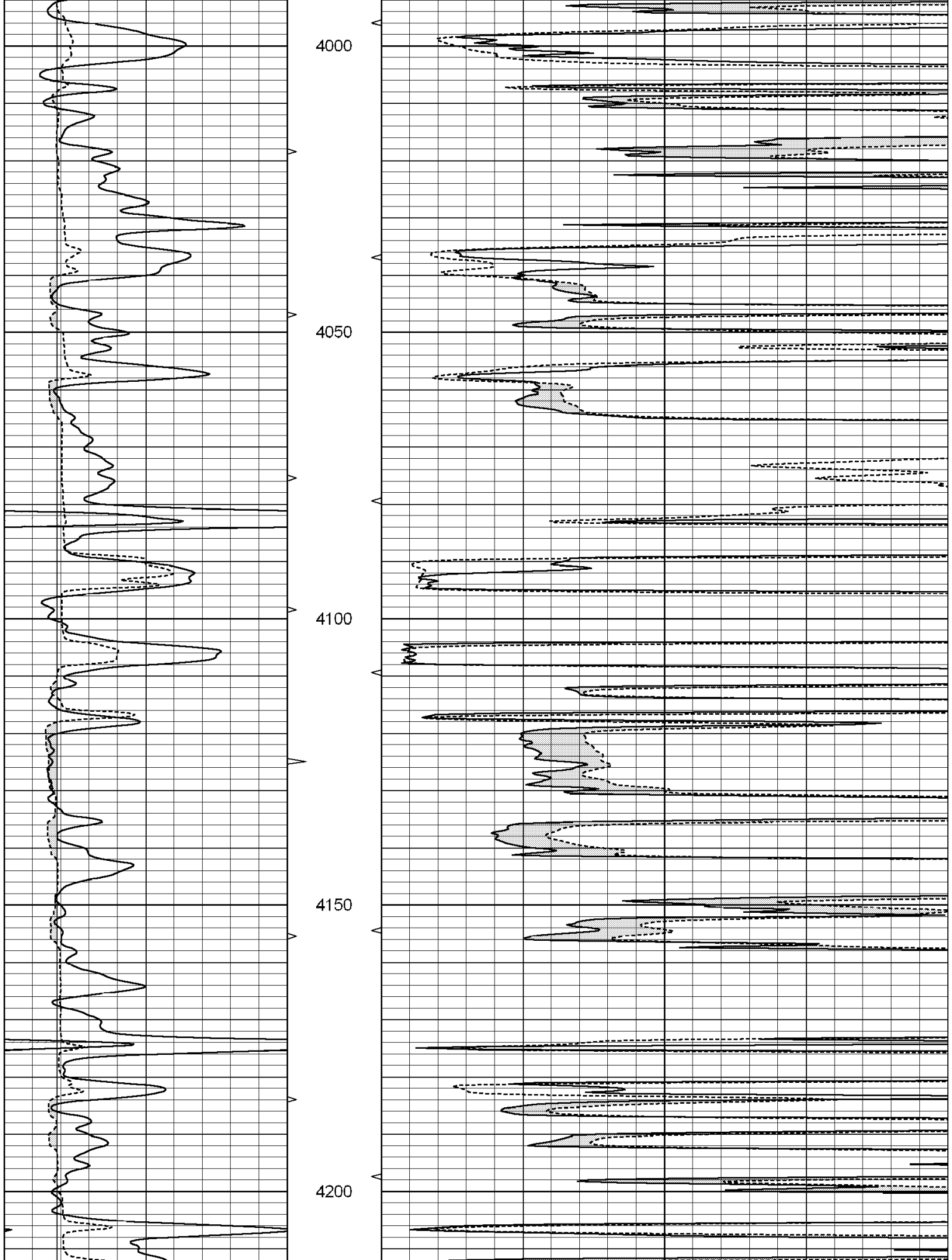
MAIN SECTION

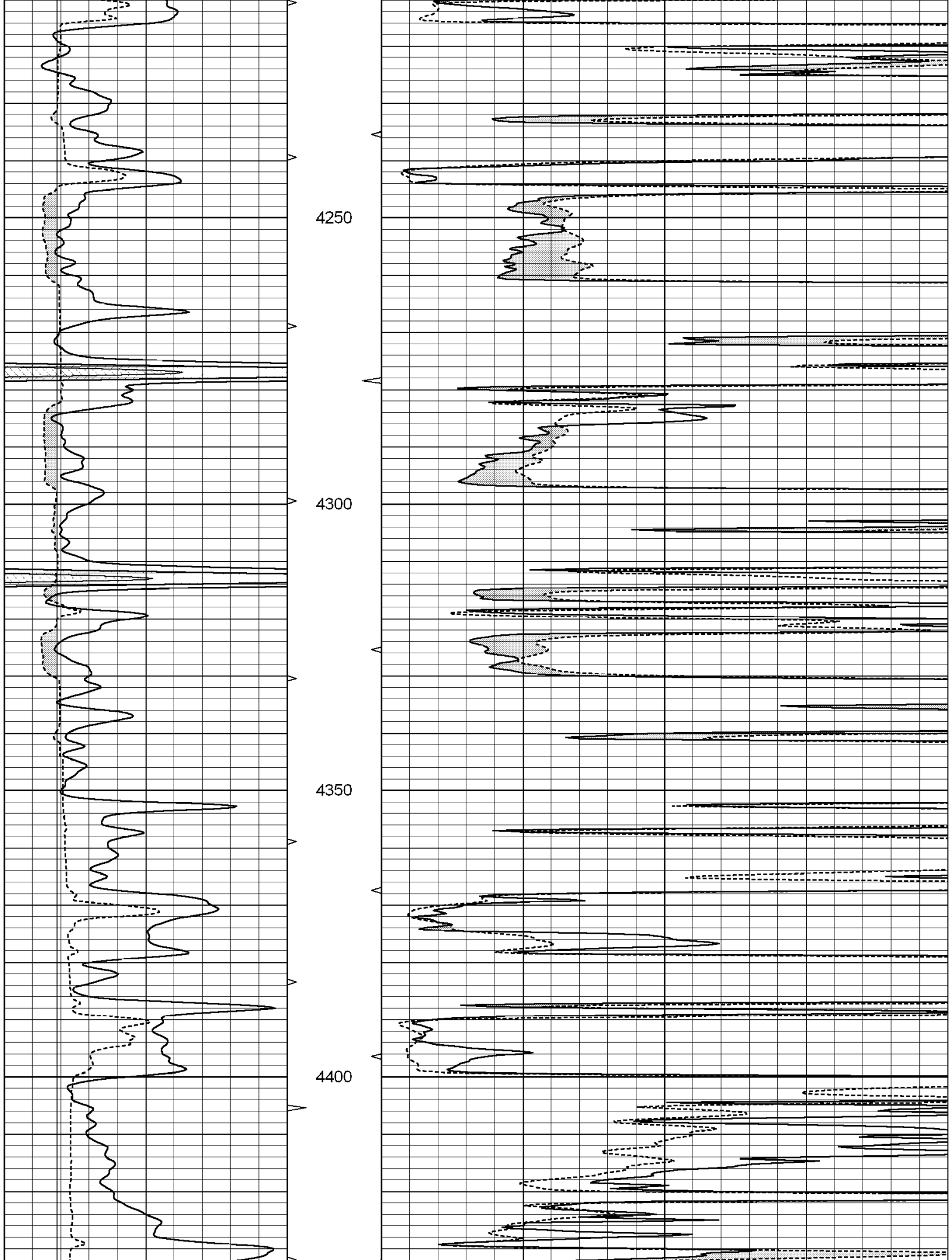
Database File: 004055ddn.db
 Dataset Pathname: pass11.2
 Presentation Format: micro
 Dataset Creation: Sun Aug 16 16:32:37 2009
 Charted by: Depth in Feet scaled 1:240

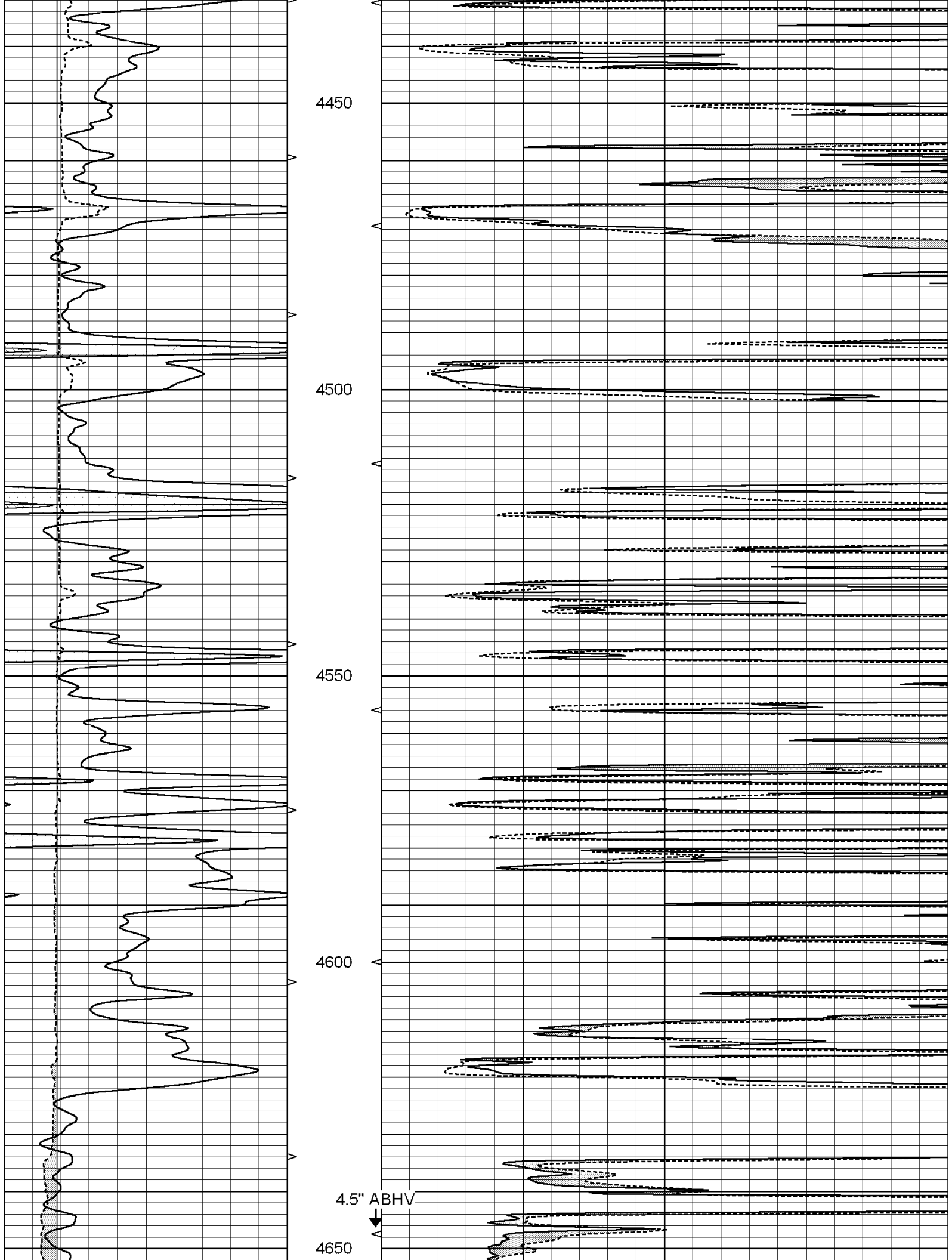
0	GAMMA RAY (GAPI)	150	ABHV	0	MEL1.5 (Ohm-m)	20
6	CALIPER (in)	16	10 (ft3) 0	0	MEL2.0 (Ohm-m)	20
			TBHV			
			0 (ft3) 10			

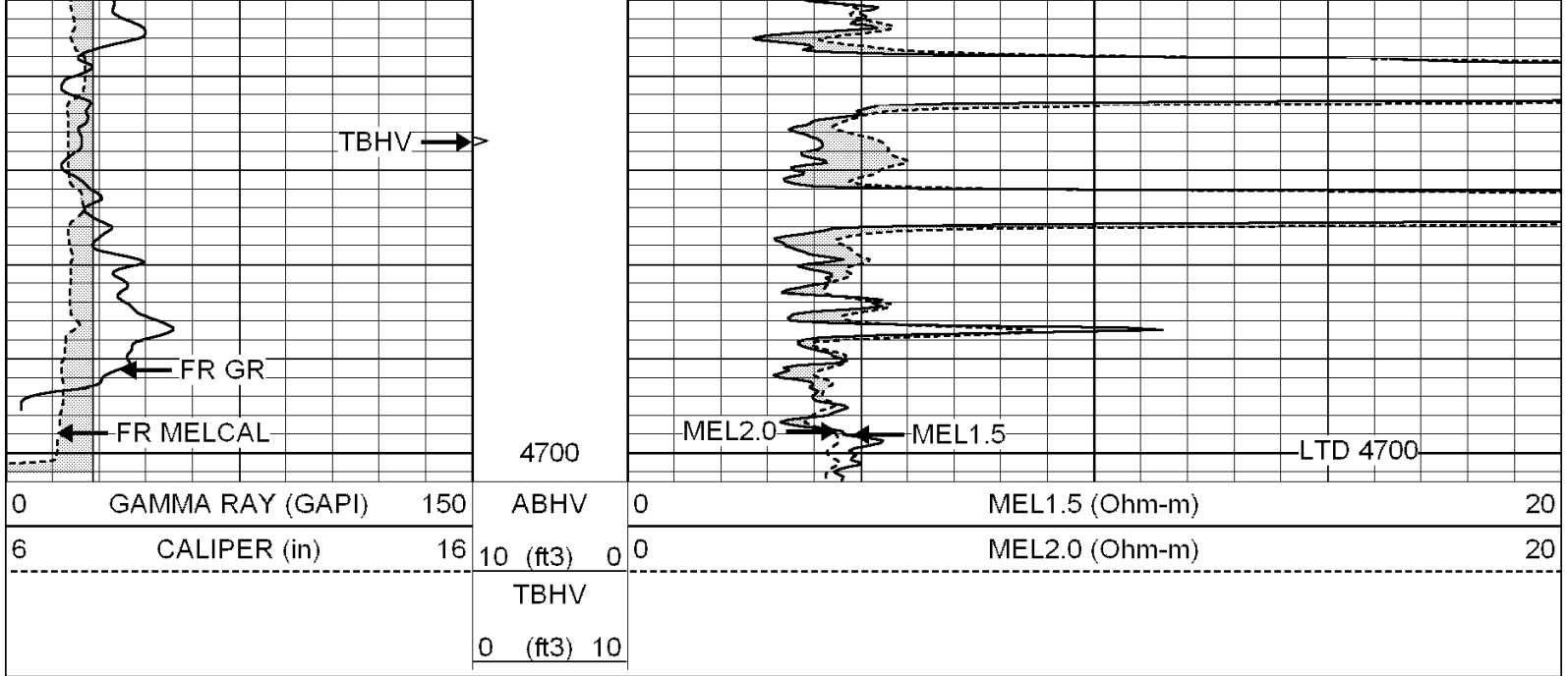










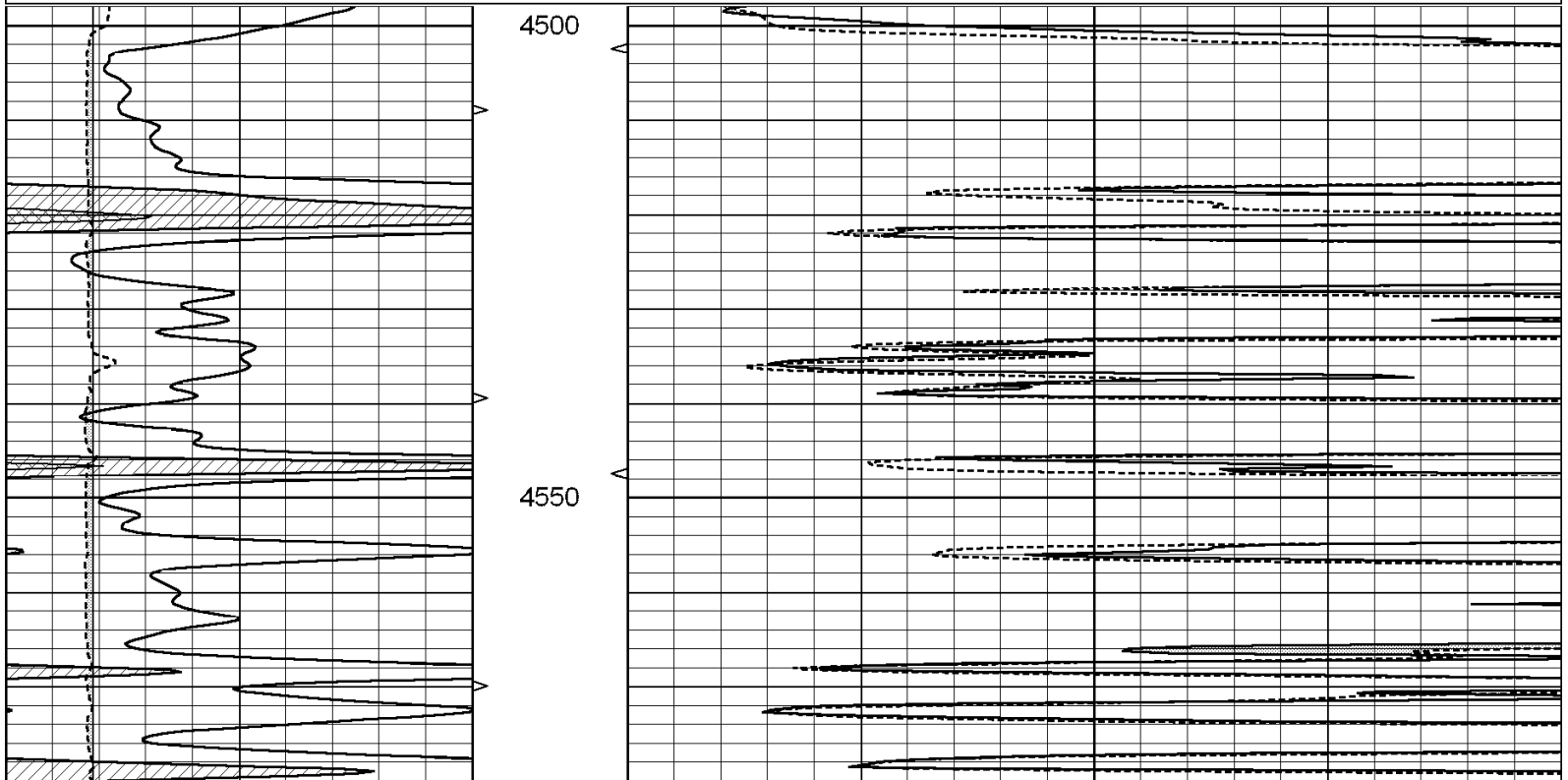


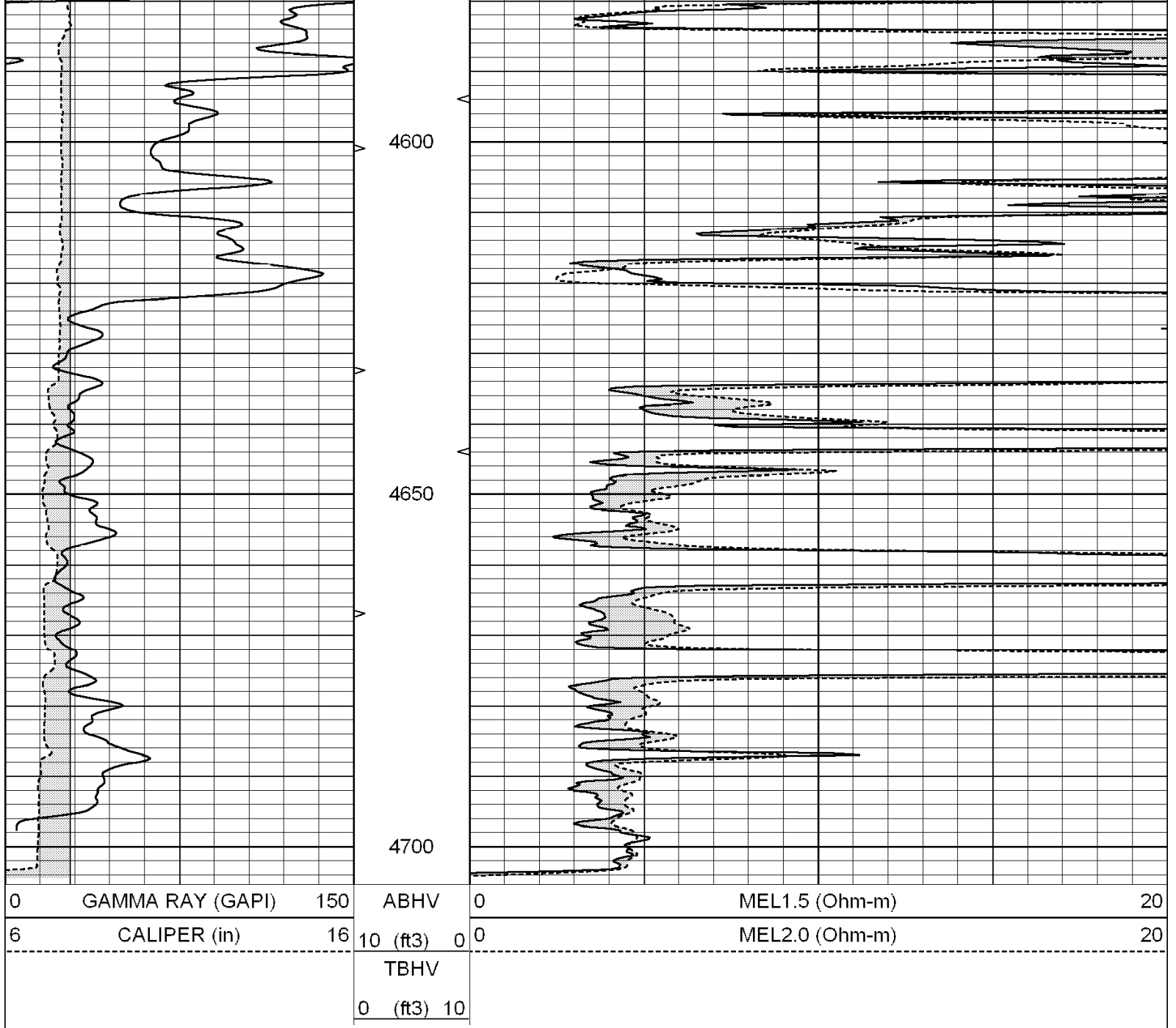
SUPERIOR
Hays,
Kansas

REPEAT SECTION

Database File: 004055ddn.db
 Dataset Pathname: pass10.6
 Presentation Format: micro
 Dataset Creation: Sun Aug 16 16:43:20 2009 by Calc Open-Cased 060407
 Charted by: Depth in Feet scaled 1:240

0	GAMMA RAY (GAPI)	150	ABHV	0	MEL1.5 (Ohm-m)	20
6	CALIPER (in)	16	10 (ft) 0	0	MEL2.0 (Ohm-m)	20
			TBHV			
			0 (ft) 10			





Calibration Report

Database File: 004055ddn.db
 Dataset Pathname: pass11.2
 Dataset Creation: Sun Aug 16 16:32:37 2009

MICRO Calibration Report

Serial Number: 2
 Tool Model: PROBE
 Performed: Sun Aug 16 15:56:43 2009

Caliper Calibration: Gain=6.672 Offset=-0.199

References	Low Cal	High Cal
Readings	6.400	15.000
	0.989	2.278

1.5" Calibration: Gain=32.000 Offset=-2.300

References	Low Cal	High Cal
	0.000	20.000

Readings	0.060	1.186
2" Calibration:	Gain=36.000	Offset=-1.300
References	Low Cal 0.000	High Cal 20.000
Readings	0.011	0.926

Gamma Ray Calibration Report

Serial Number:	GR4	
Tool Model:	OPEN	
Performed:	Sun Aug 16 15:45:31 2009	
Calibrator Value:	200.0	GAPI
Background Reading:	0.0	cps
Calibrator Reading:	189.0	cps
Sensitivity:	0.5000	GAPI/cps