



Dual Compensated
Porosity Log

DIGITAL LOG (785) 625-3858

API No. 15-135-25,167-00-00

Company DaMar Resources, Inc.
Well Evel Unit No. 1
Field Petersillie
County Ness
Location 1457' FNL & 2469' FEL
State Kansas

Sec: 26 Twp: 20 S Rge: 24 W

Other Services
DIL
MEL

Permanent Datum Ground Level Elevation 2258
Log Measured From Kelly Bushing 5 Ft. Above Perm. Datum
Drilling Measured From Kelly Bushing

K.B. 2263
D.F.
G.L. 2258

Date 9/25/2010

Run Number One

Type Log CNL / CDL

Depth Driller 4440

Depth Logger 4441

Bottom Logged Interval 4420

Top Logged Interval 3600

Type Fluid In Hole Chemical

Salinity, PPM CL 7,000

Density 9.0

Level Full

Max. Rec. Temp. F 122

Operating Rig Time 4 Hours

Equipment -- Location 4 Hays

Recorded By K Bange

Witnessed By Josh Austin

Borehole Record				Casing Record			
Run No.	Bit	From	To	Size	Wgt.	From	To
1	12.25	00	302	8.625	24#	00	302
2	7.875	302	4440				

<<< Fold Here >>>

All interpretations are opinions based on inferences from electrical or other measurements and we cannot and do not guarantee the accuracy or correctness of any interpretation, and we shall not, except in the case of gross or willful negligence on our part, be liable or responsible for any loss, costs, damages, or expenses incurred or sustained by anyone resulting from any interpretation made by any of our officers, agents or employees. These interpretations are also subject to our general terms and conditions set out in our current Price Schedule.

Comments

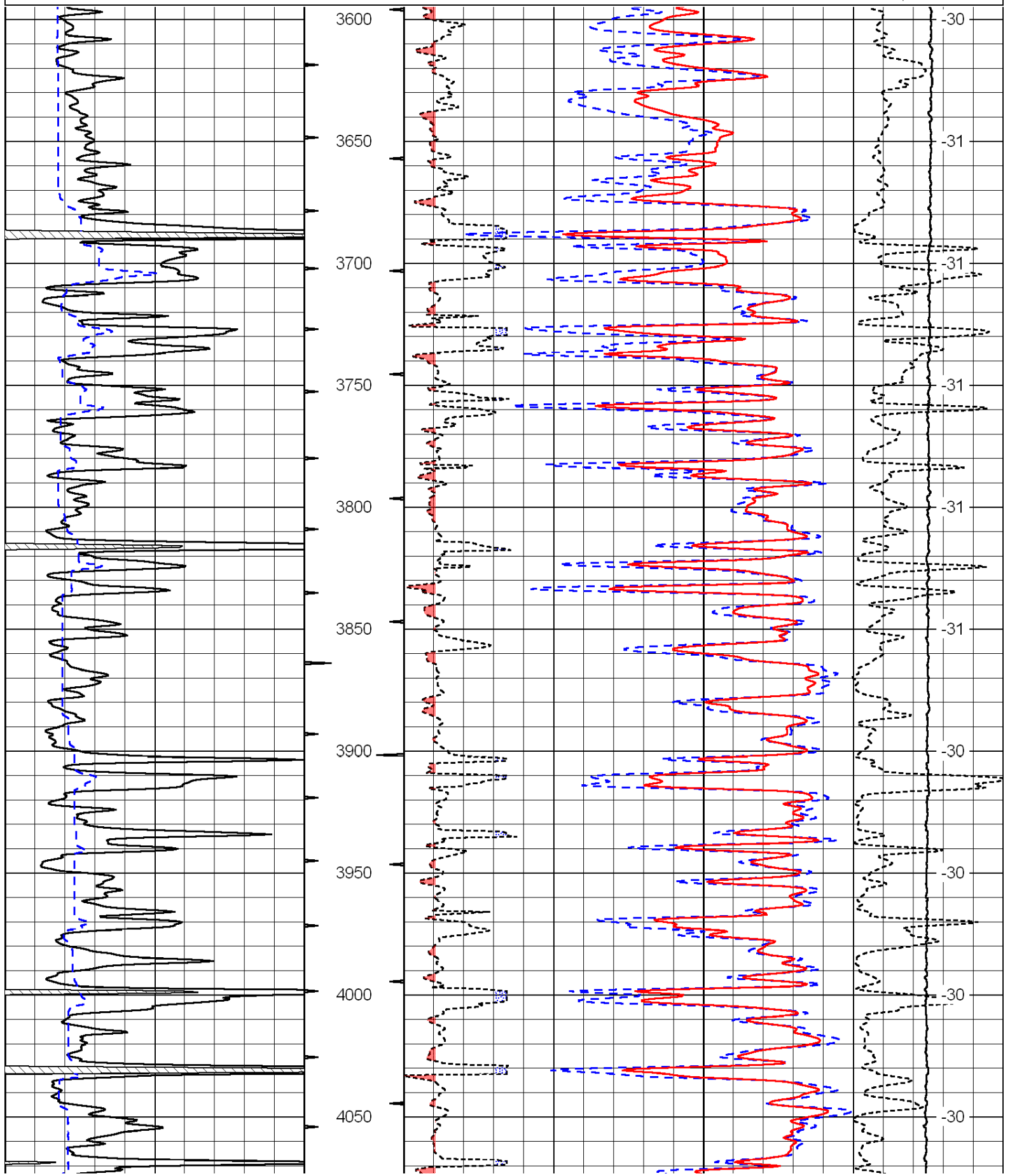
Thank you for using Log-Tech, Inc.
(785) 625-3858

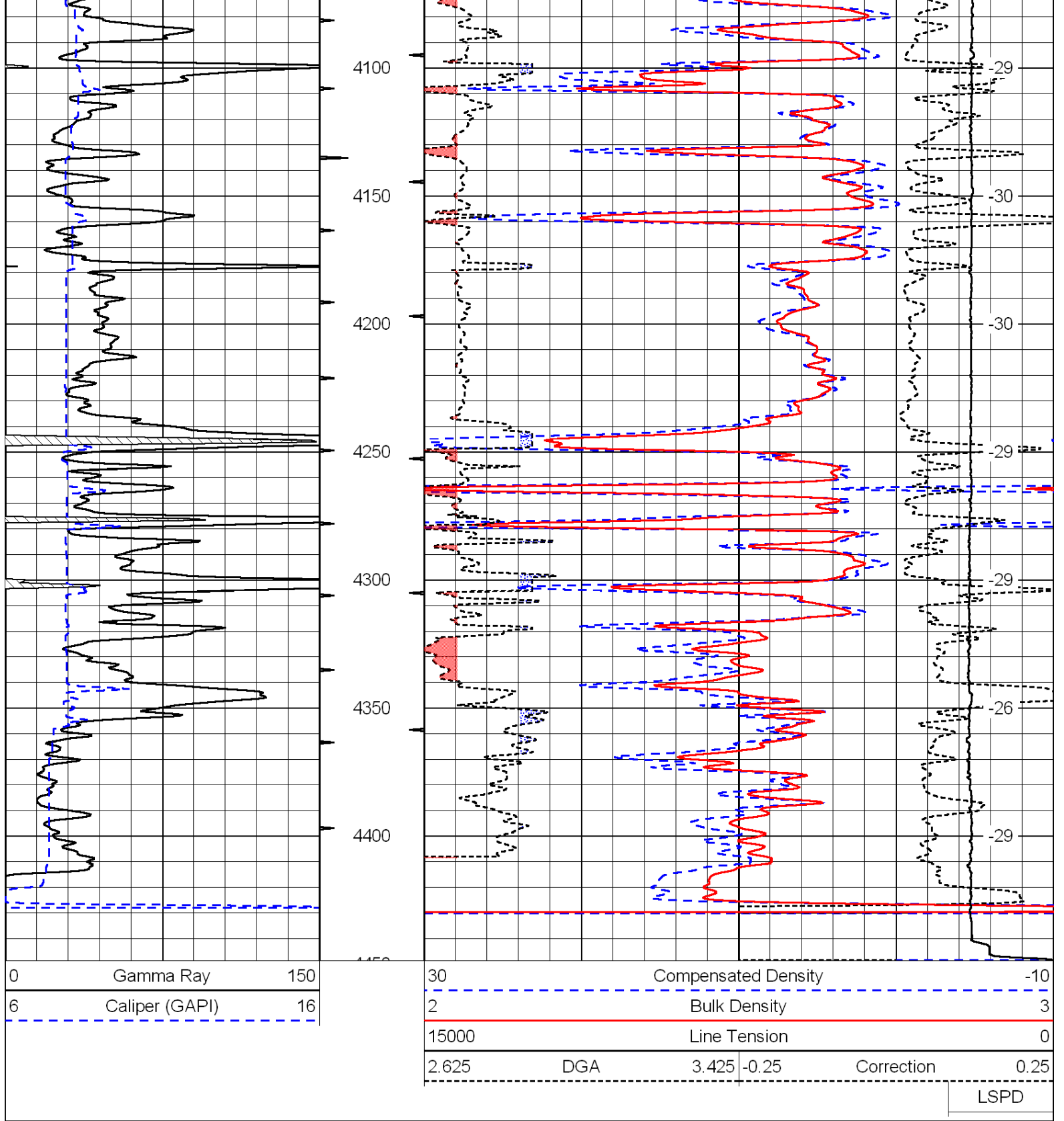
Ness City, 11 S to county rd 536, 2 W, 1 S to 10 rd, 1 W to P rd, 1/2 N, E into

Database File: c:\warrior\data\damar_evel unit no. 1\damar.db
 Dataset Pathname: dil\damar2in
 Presentation Format: cdl
 Dataset Creation: Sat Sep 25 18:14:41 2010
 Charted by: Depth in Feet scaled 1:600

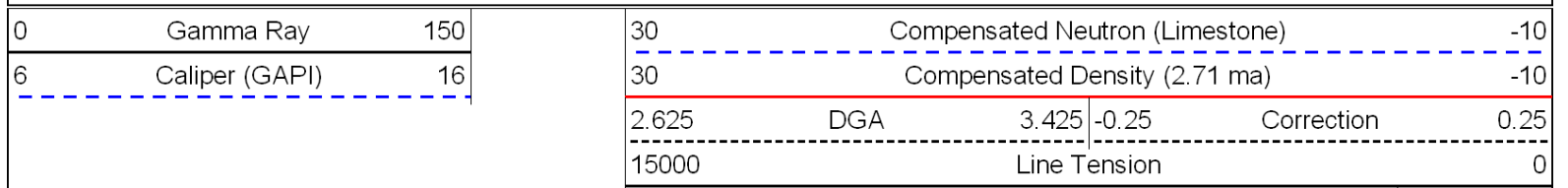
0	Gamma Ray	150
6	Caliper (GAPI)	16

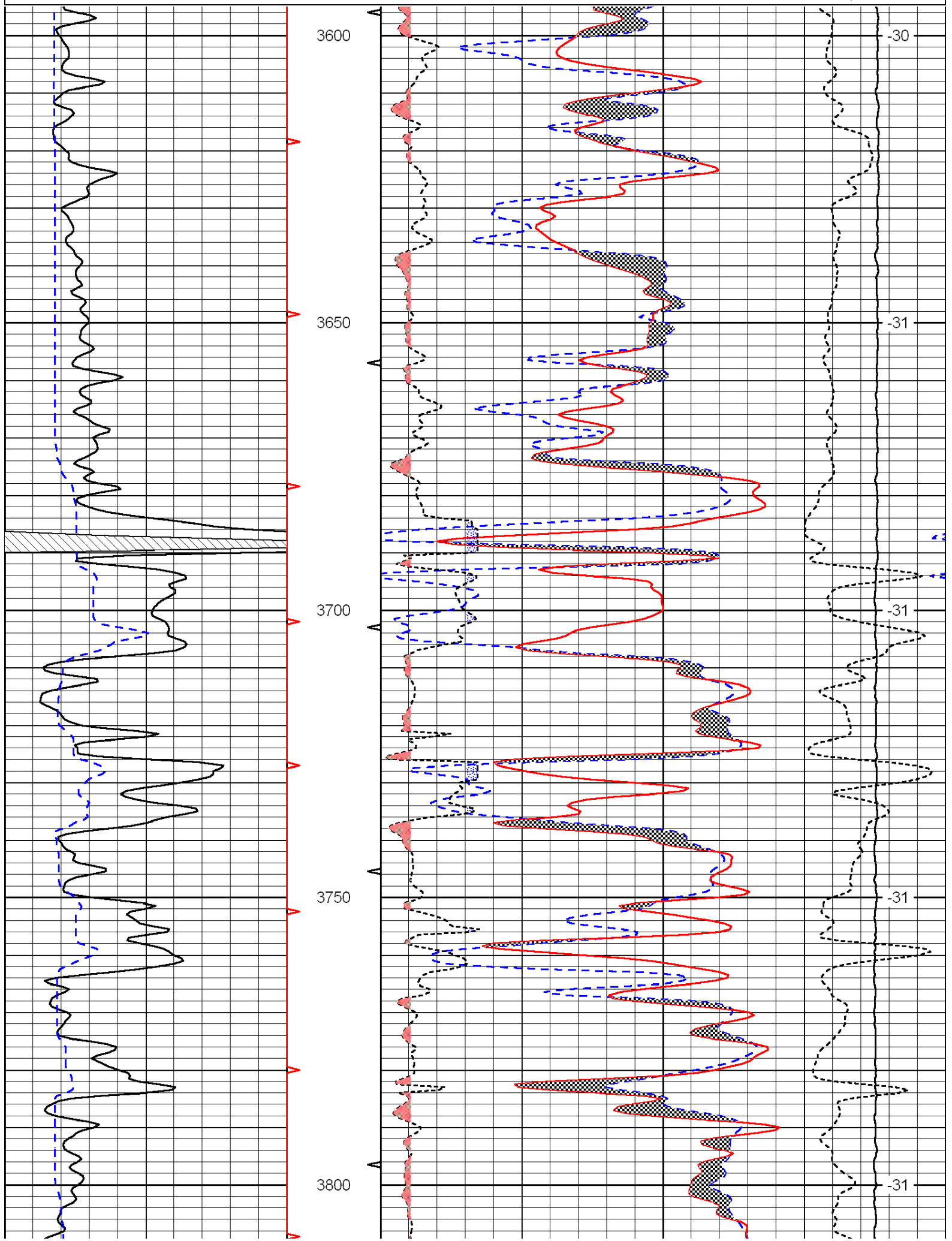
30	Compensated Density		-10
2	Bulk Density		3
15000	Line Tension		0
2.625	DGA	3.425	-0.25
Correction			0.25
LSPD			

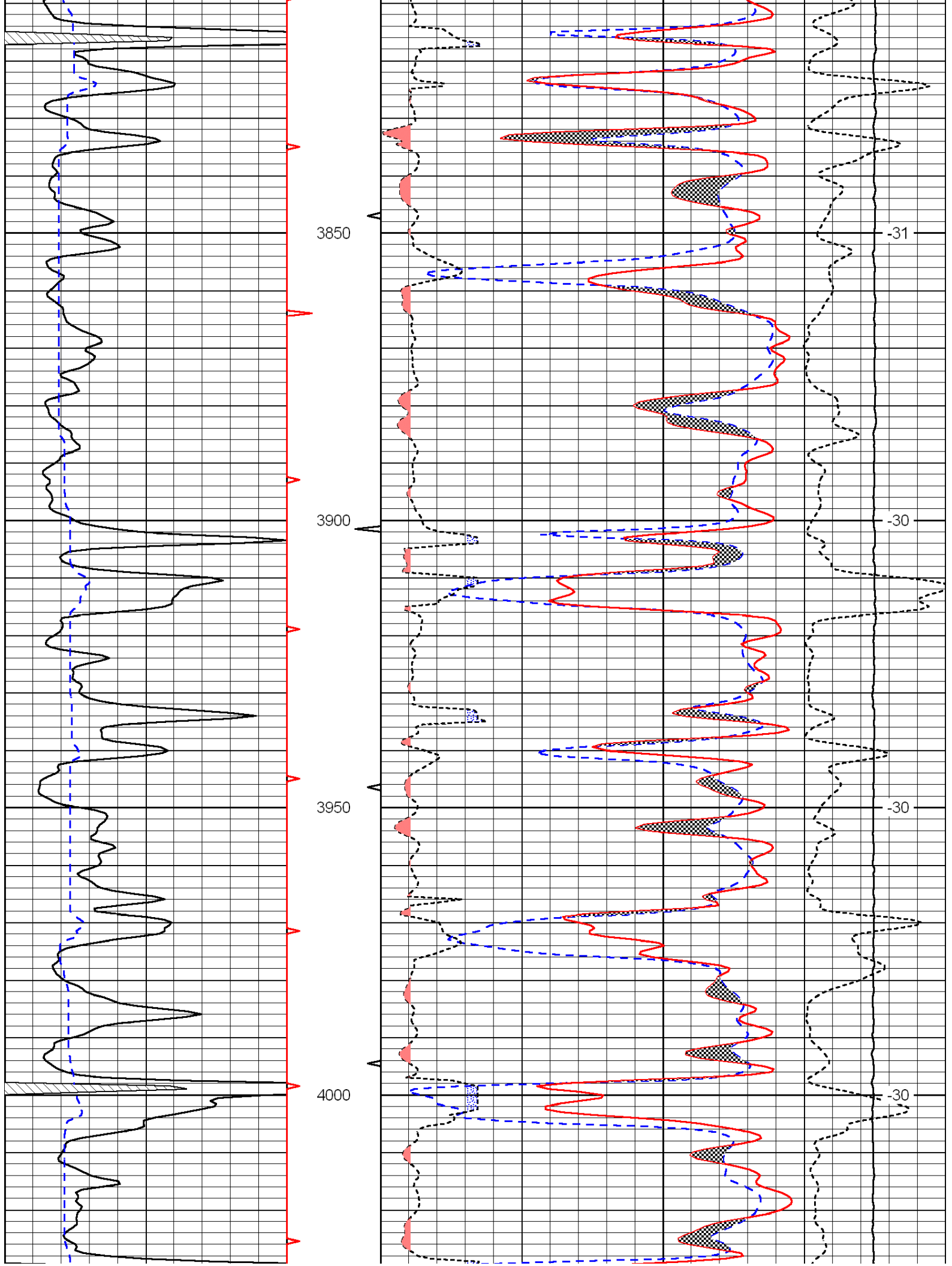


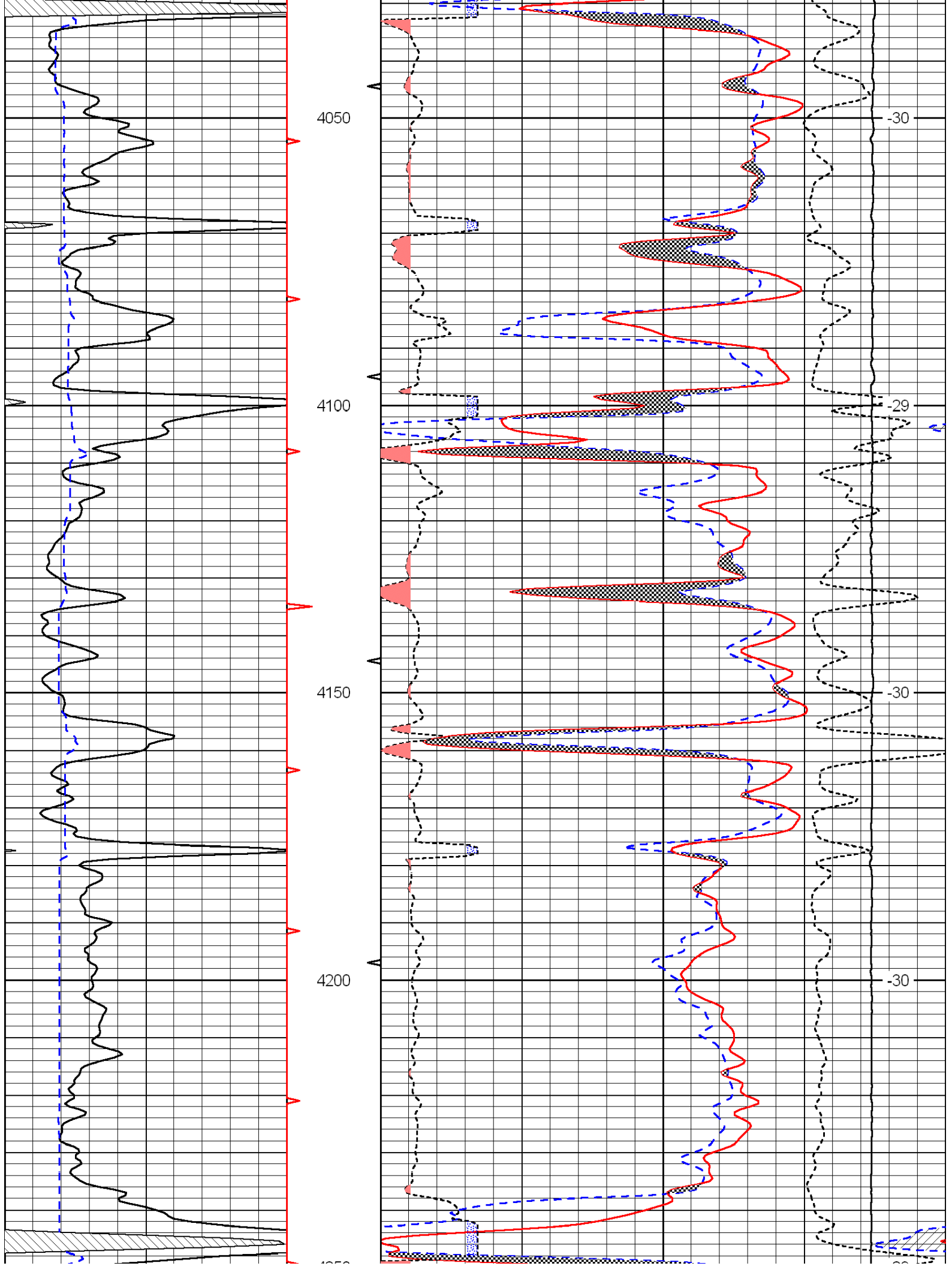


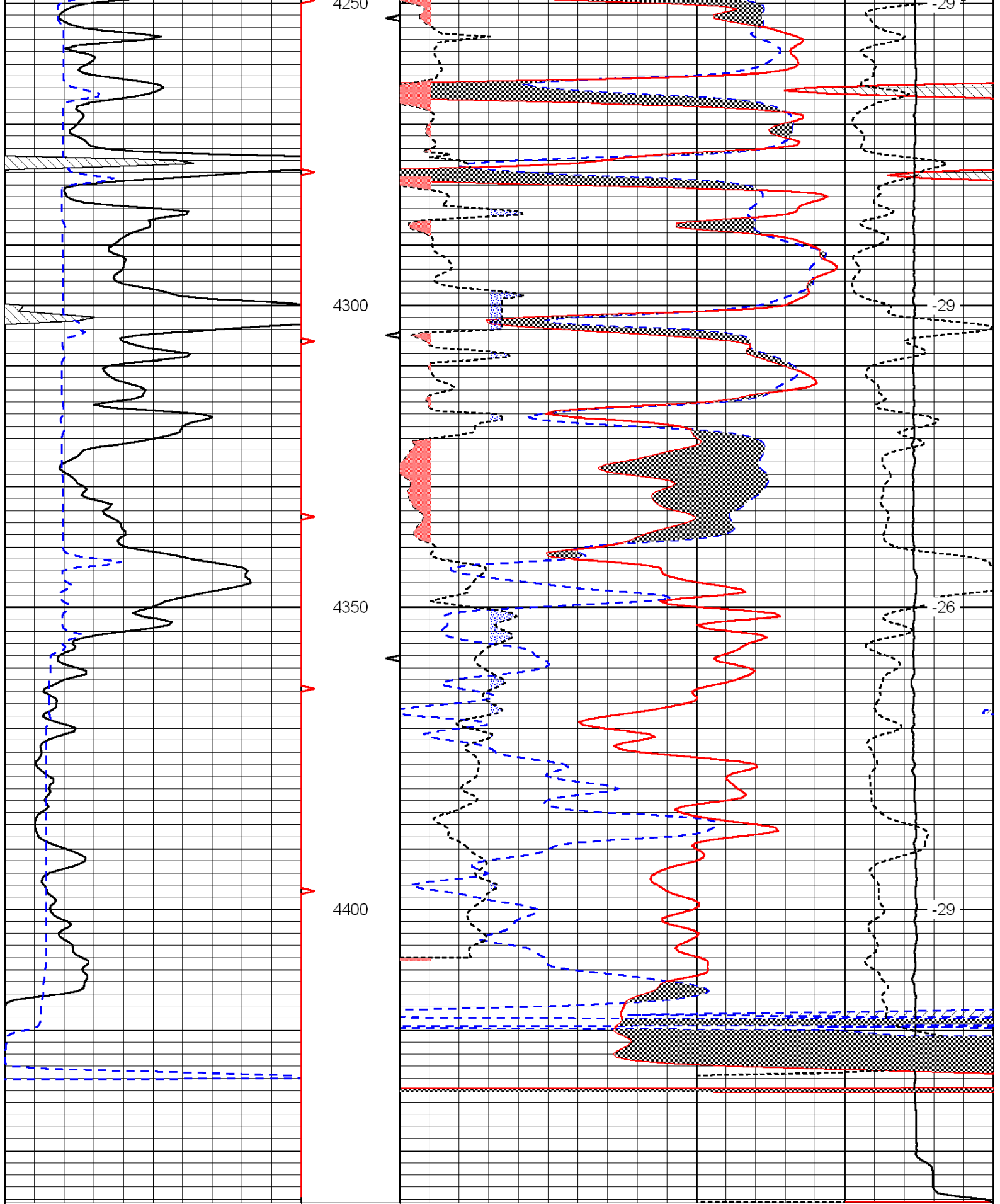
Database File: c:\warrior\data\damar_evel unit no. 1\damar.db
 Dataset Pathname: dil/damar2in
 Presentation Format: cndlspec
 Dataset Creation: Sat Sep 25 18:14:41 2010
 Charted by: Depth in Feet scaled 1:240











0	Gamma Ray	150
6	Caliper (GAPI)	16

30	Compensated Neutron (Limestone)			-10	
30	Compensated Density (2.71 ma)			-10	
2.625	DGA	3.425	-0.25	Correction	0.25
15000	Line Tension			0	

SPD	SPD	SPD	SPD	SPD	SPD
-----	-----	-----	-----	-----	-----