



DIGITAL LOG (785) 625-3858

Microresistivity Log

API No.	15-135-25,167-00-00		
Company	DaMar Resources, Inc.		
Well	Evel Unit No. 1		
Field	Petersillie		
County	Ness	State	Kansas
Location	1457' FNL & 2469' FEL		
Sec: 26	Twp: 20 S	Rge: 24 W	Elevation 2258
Permanent Datum	Ground Level	Log Measured From	Kelly Bushing
Drilling Measured From	Kelly Bushing	5	Ft. Above Perm. Datum
			Other Services CNL/CDL DIL
Date	9/25/2010		
Run Number	Two		
Depth Driller	4440		
Depth Logger	4441		
Bottom Logged Interval	4440		
Top Log Interval	3600		
Casing Driller	8.625 @ 302		
Casing Logger	302		
Bit Size	7.875		
Type Fluid in Hole	Chemical		
Salinity, ppm Cl	7.000		
Density / Viscosity	9.0	51	
pH / Fluid Loss	8.0	11.2	
Source of Sample	Flowline		
Rm @ Meas. Temp	.55	@	80
Rmf @ Meas. Temp	.41	@	80
Rmc @ Meas. Temp	.74	@	80
Source of Rmf / Rmc	Charts		
Rm @ BHT	.36	@	122
Operating Rig Time	4 Hours		
Max Rec. Temp. F	122		
Equipment Number	4		
Location	Hays		
Recorded By	K Bange		
Witnessed By	Josh Austin		

<<< Fold Here >>>

All interpretations are opinions based on inferences from electrical or other measurements and we cannot and do not guarantee the accuracy or correctness of any interpretation, and we shall not, except in the case of gross or willful negligence on our part, be liable or responsible for any loss, costs, damages, or expenses incurred or sustained by anyone resulting from any interpretation made by any of our officers, agents or employees. These interpretations are also subject to our general terms and conditions set out in our current Price Schedule.

Comments

Thank you for using Log-Tech, Inc.
(785) 625-3858

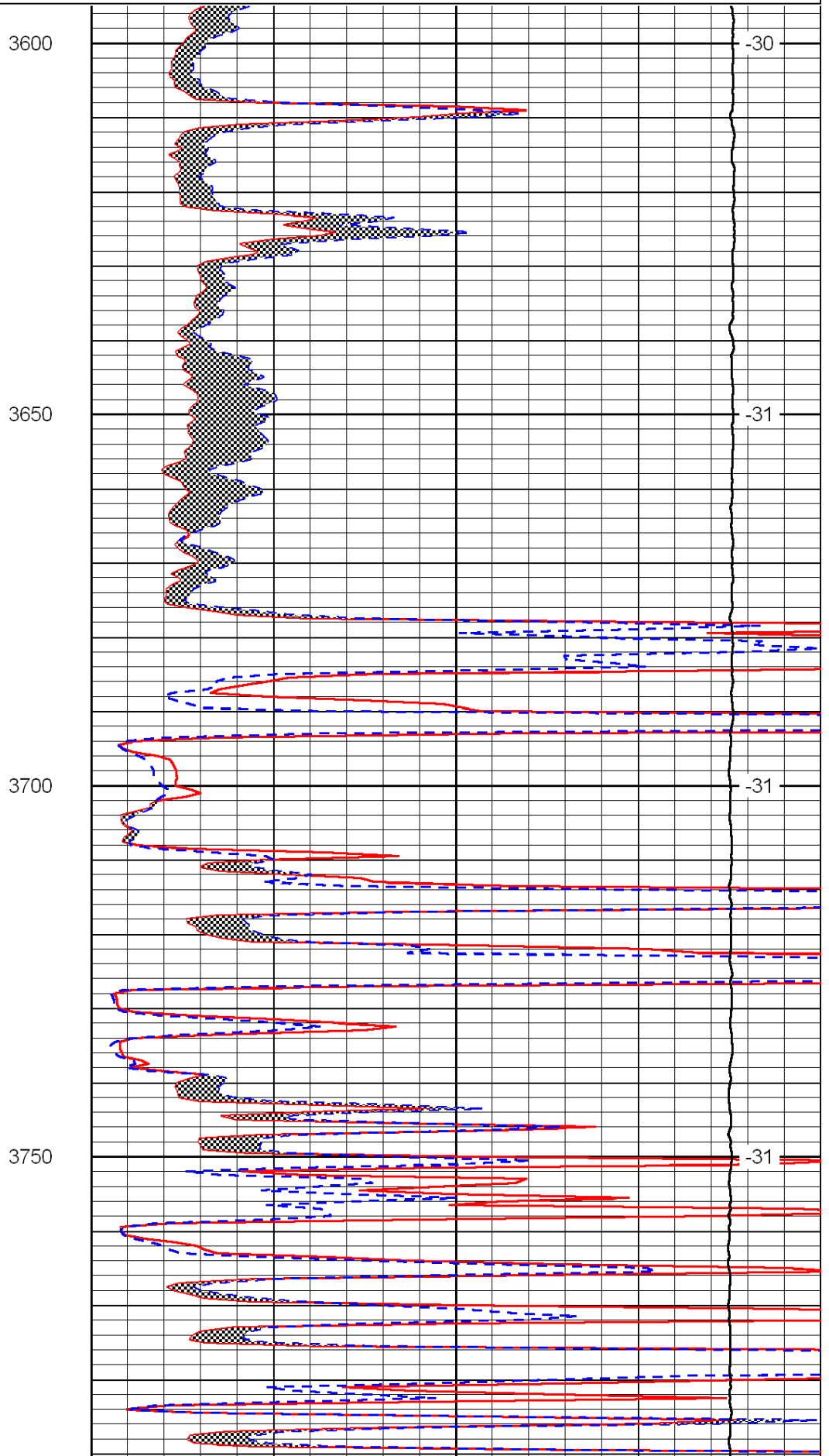
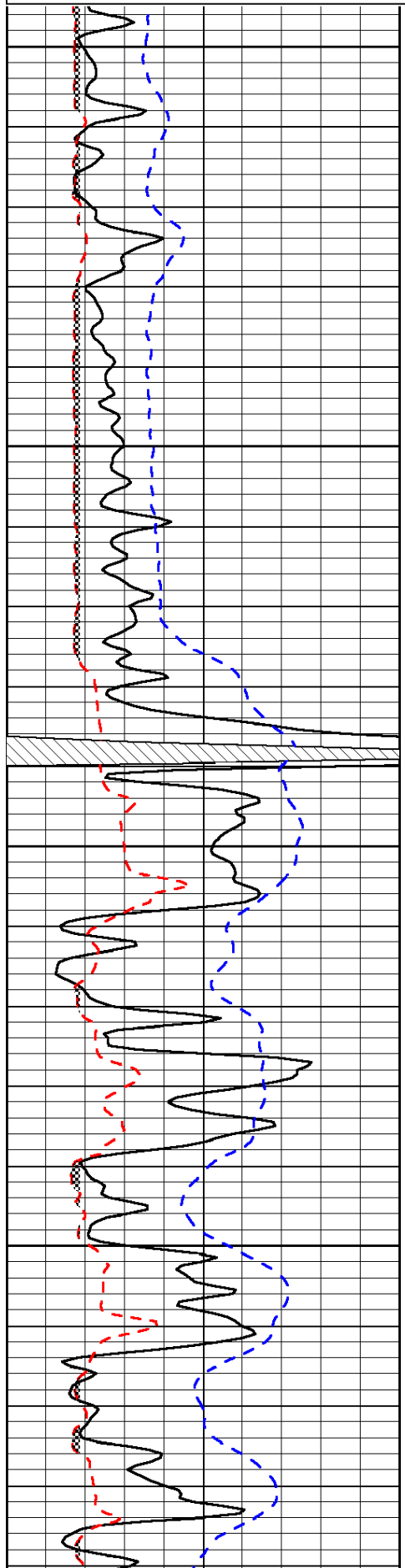
Ness City, 11 S to county rd 536, 2 W, 1 S to 10 rd, 1 W to P rd, 1/2 N, E into

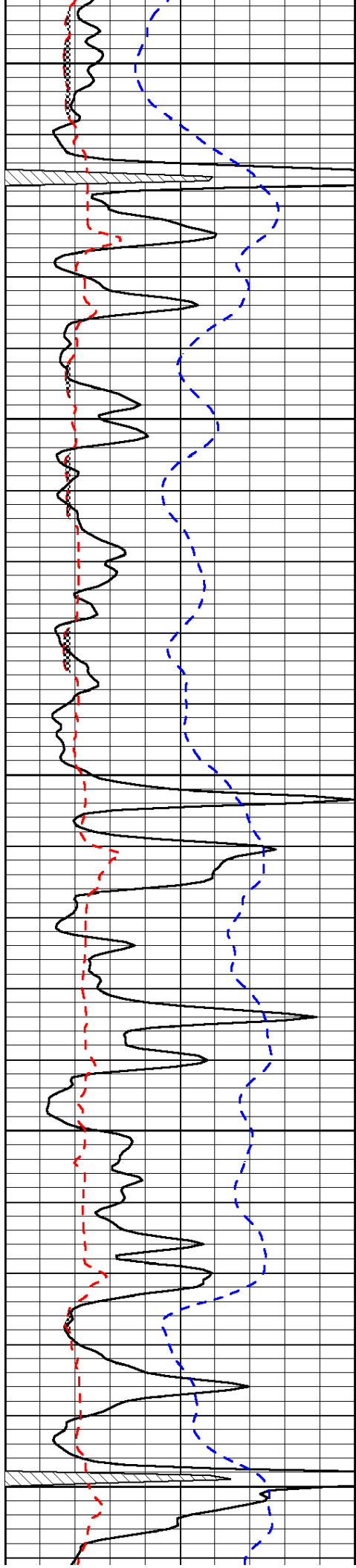
Database File: c:\warrior\data\damar_evel unit no. 1\damar.db
 Dataset Pathname: dil\damar2in
 Presentation Format: micro
 Dataset Creation: Sat Sep 25 18:14:41 2010
 Charted by: Depth in Feet scaled 1:240

0	Gamma Ray	150
6	Micro Log Caliper (GAPI)	16
-200	SP (mV)	0

0	Micro Inverse 1 X 1	40
0	Micro Normal 2"	40
15000	Line Weight	0

LSPD





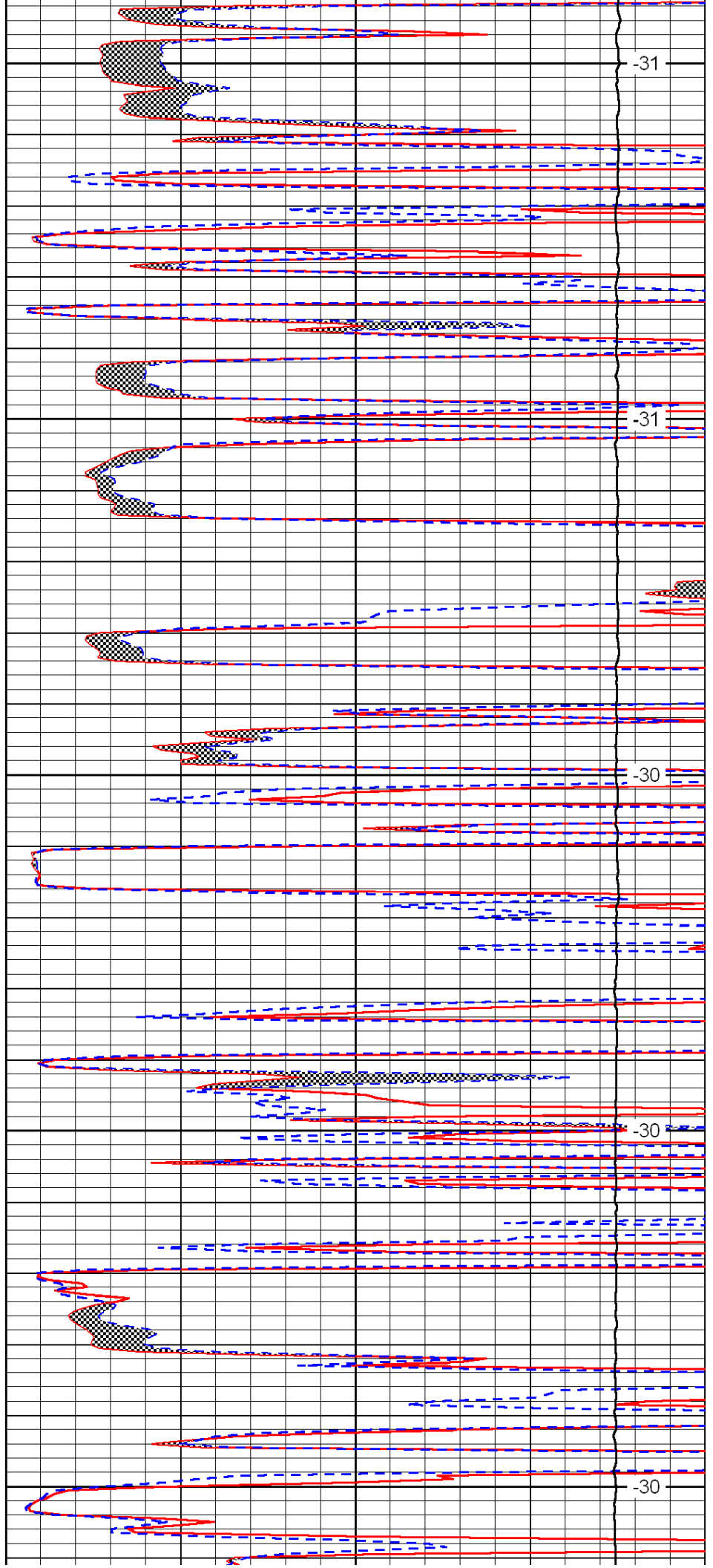
3800

3850

3900

3950

4000



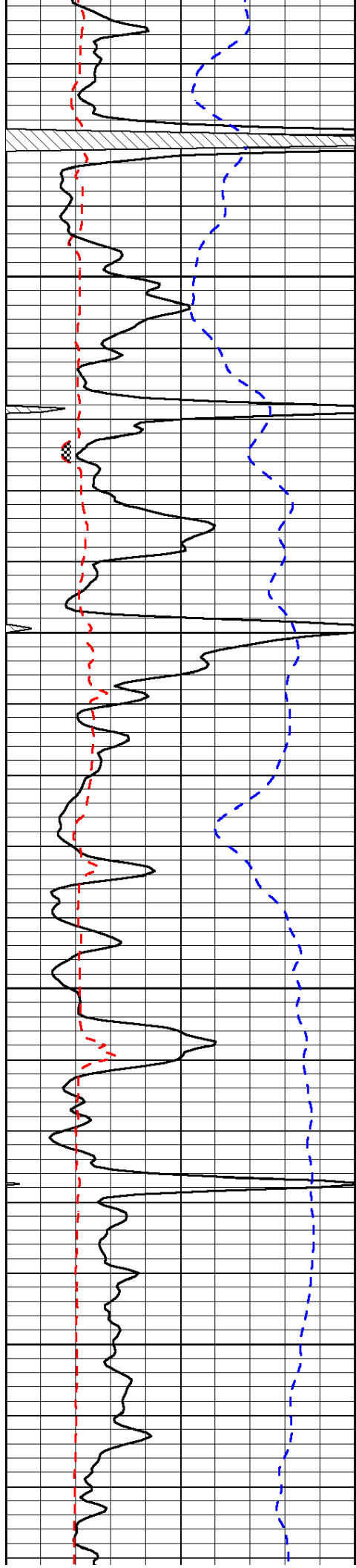
-31

-31

-30

-30

-30

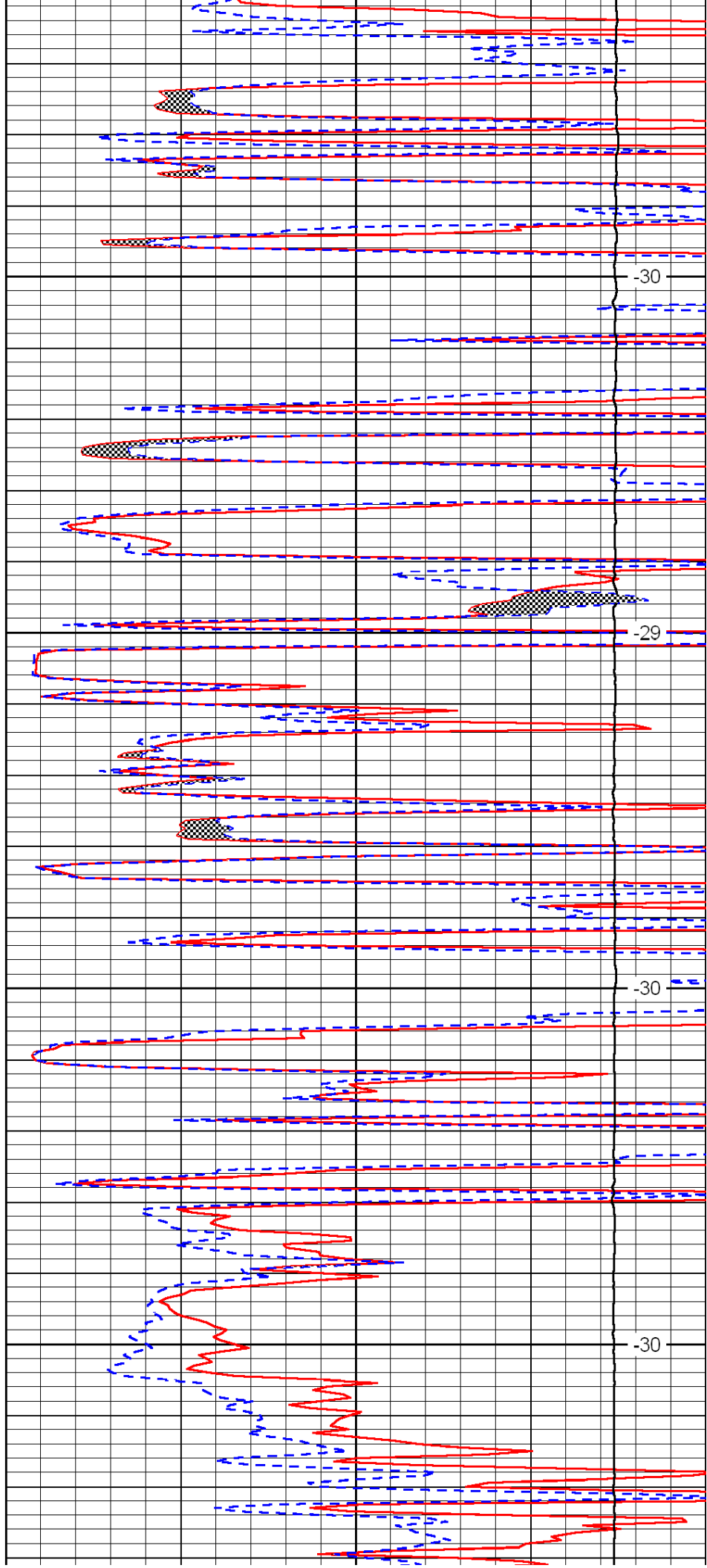


4050

4100

4150

4200

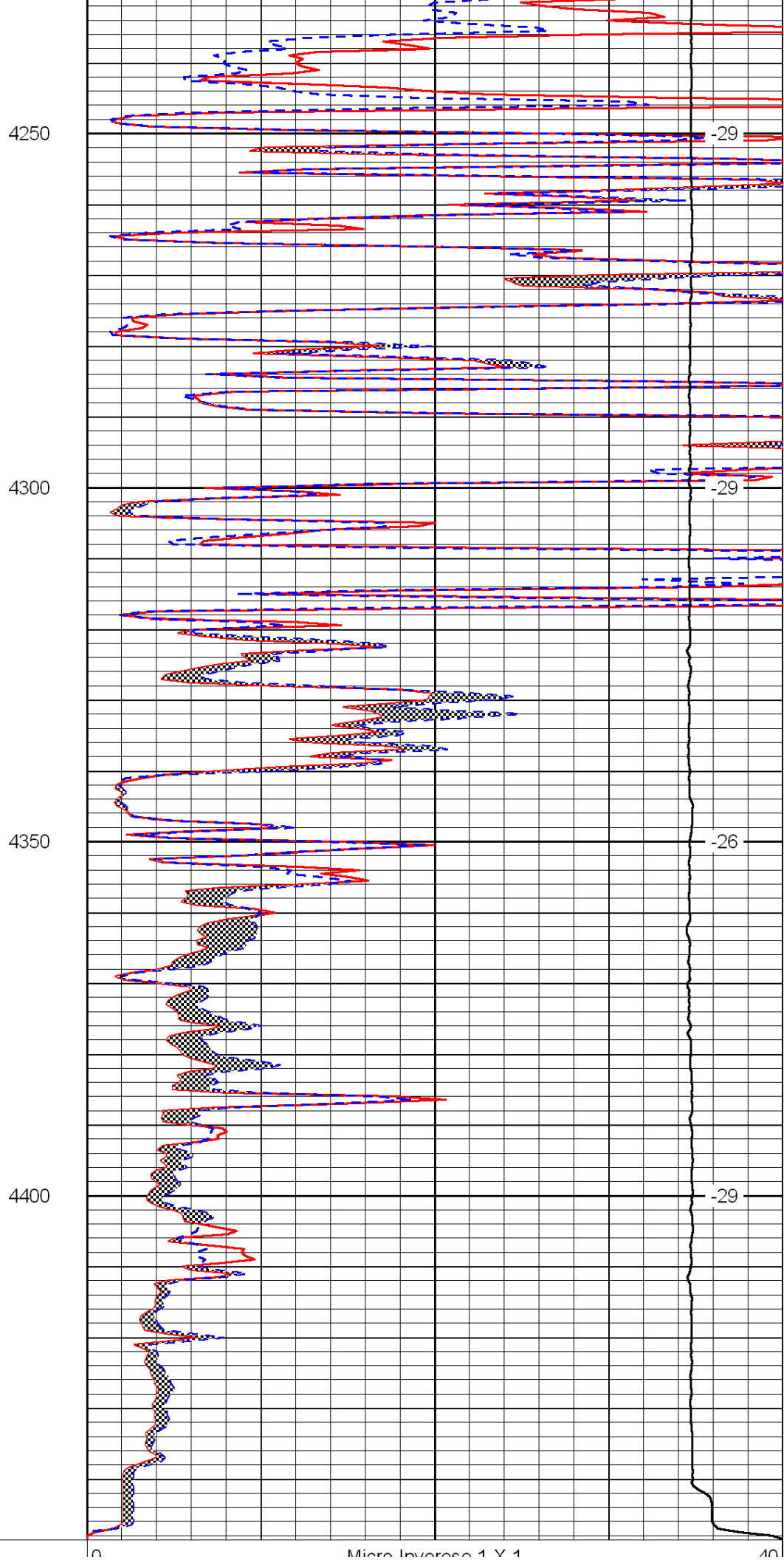
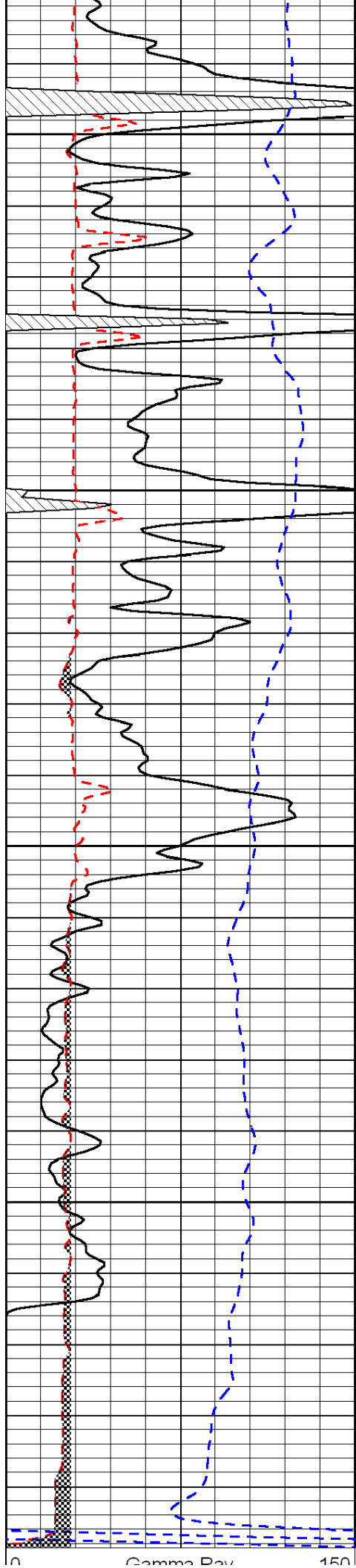


-30

-29

-30

-30



0	Gamma Ray	150
6	Micro Log Caliper (GAPI)	16
-200	SP (mV)	0

0	Micro Inverse T X T	40
0	Micro Normal 2"	40
15000	Line Weight	0

LSPD
