



Microresistivity Log

DIGITAL LOG (785) 625-3858

API No.	15-039-21,117-00-00		
Company	Cholla Production, LLC		
Well	May-Jording No. 1-23		
Field	Jording		
County	Decatur	State	Kansas
Location	W2 E2 NW NW 660' FNL & 760' FWL		
Sec: 23	Twp: 2S	Rge: 30W	
Permanent Datum	Ground Level	Elevation	2830
Log Measured From	Kelly Bushing	5	Ft. Above Perm. Datum
Drilling Measured From	Kelly Bushing		
		Other Services	CNL/CDL DIL/BHCS
		Elevation	K.B. 2835 D.F. G.L. 2830

Date	6/6/2010
Run Number	Two
Depth Driller	4070
Depth Logger	4070
Bottom Logged Interval	4069
Top Log Interval	2550
Casing Driller	8.625 @ 303
Casing Logger	301
Bit Size	7.875
Type Fluid in Hole	Chemical
Salinity, ppm CL	1300
Density / Viscosity	9.1 63
pH / Fluid Loss	10.0 8.0
Source of Sample	Flowline
Rm @ Meas. Temp	1.30 @ 80
Rmf @ Meas. Temp	.98 @ 80
Rmc @ Meas. Temp	1.76 @ 80
Source of Rmf / Rmc	Charts
Rm @ BHT	.85 @ 119
Operating Rig Time	4 Hours
Max Rec. Temp. F	119
Equipment Number	10
Location	Hays
Recorded By	J. Long
Witnessed By	Bill Goff

<<< Fold Here >>>

All interpretations are opinions based on inferences from electrical or other measurements and we cannot and do not guarantee the accuracy or correctness of any interpretation, and we shall not, except in the case of gross or willful negligence on our part, be liable or responsible for any loss, costs, damages, or expenses incurred or sustained by anyone resulting from any interpretation made by any of our officers, agents or employees. These interpretations are also subject to our general terms and conditions set out in our current Price Schedule.

Comments

Thank you for using Log-Tech, Inc.
(785) 625-3858

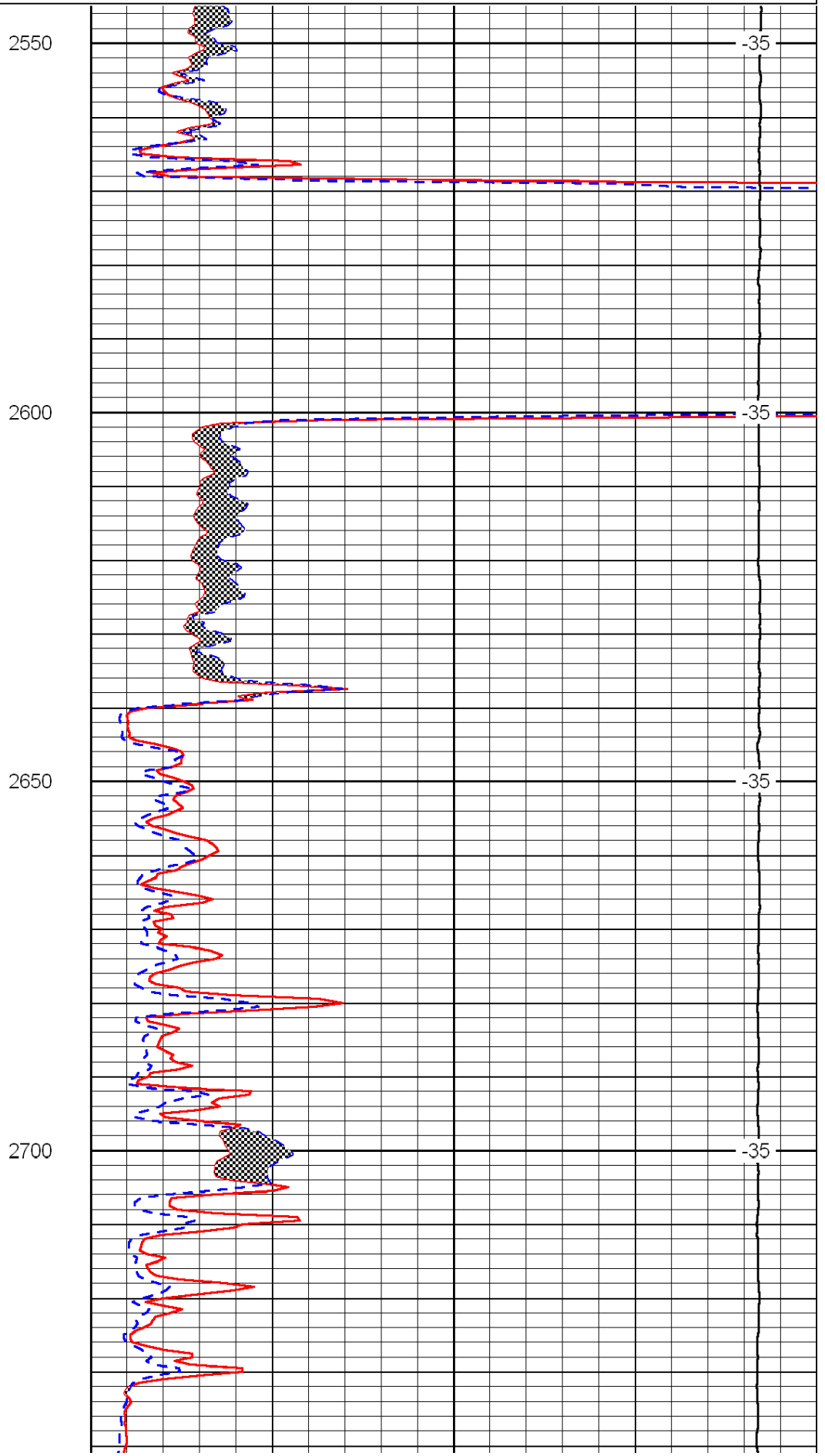
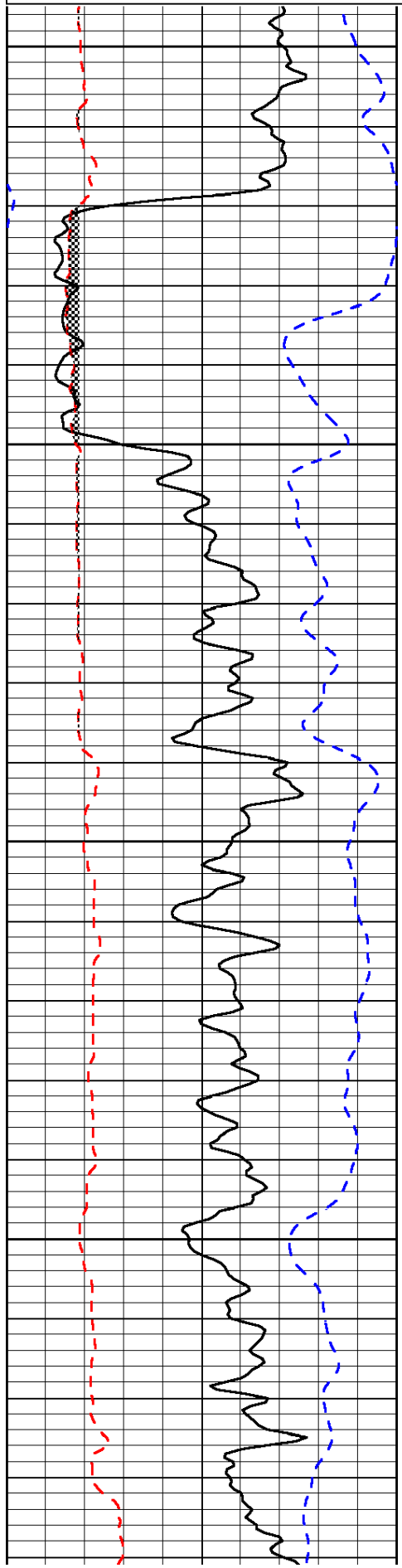
Oberlin, 7 West to 7 Rd, 1 North to T, 1/2 West, 2 North, 1/2 East, South Into

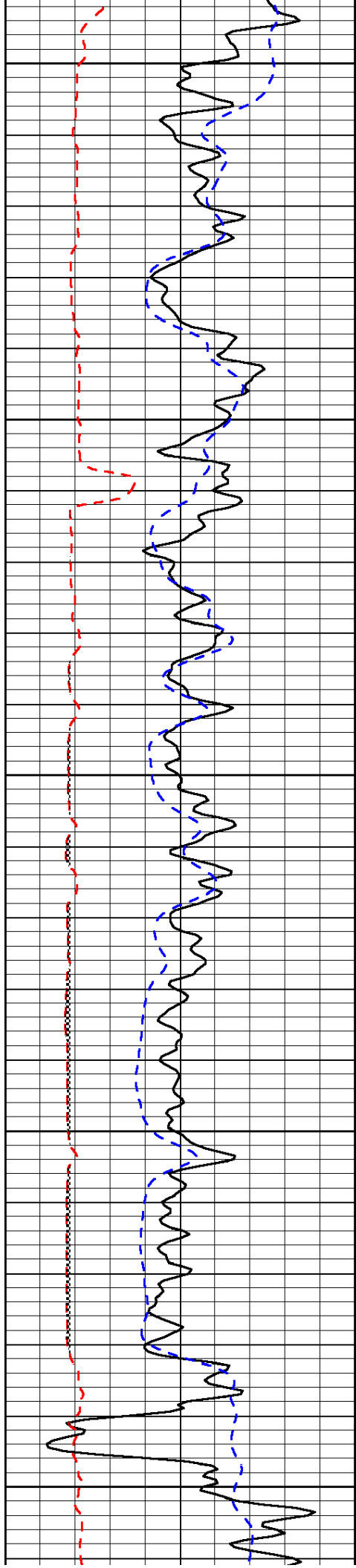
Database File: c:\warrior\data\cholla_may-jording no. 1-23\cholla hd.db
 Dataset Pathname: dil\cholstck
 Presentation Format: micro
 Dataset Creation: Sun Jun 06 19:07:05 2010
 Charted by: Depth in Feet scaled 1:240

0	Gamma Ray	150
6	Micro Log Caliper (GAPI)	16
-200	SP (mV)	0

0	Micro Inverse 1 X 1	40
0	Micro Normal 2"	40
15000	Line Weight	0

LSPD





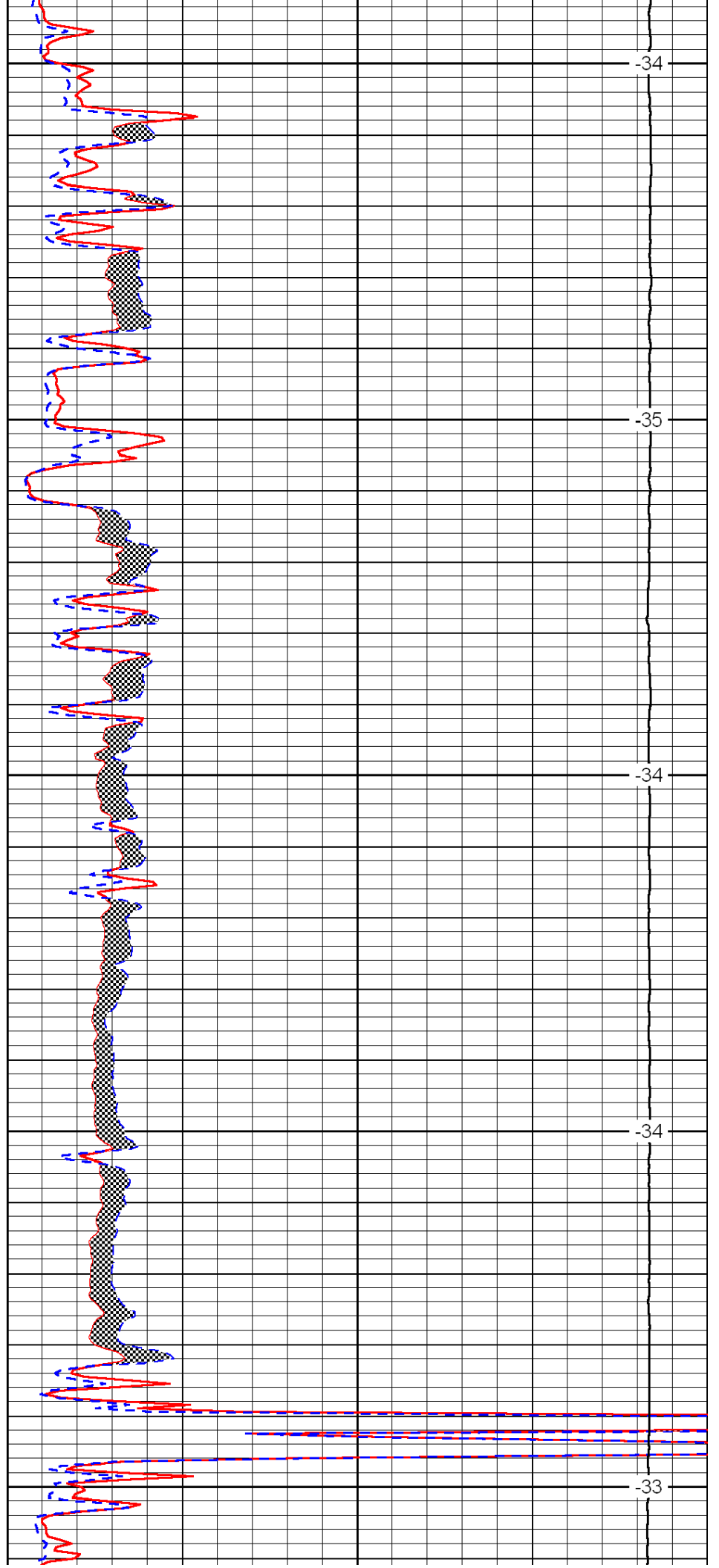
2750

2800

2850

2900

2950



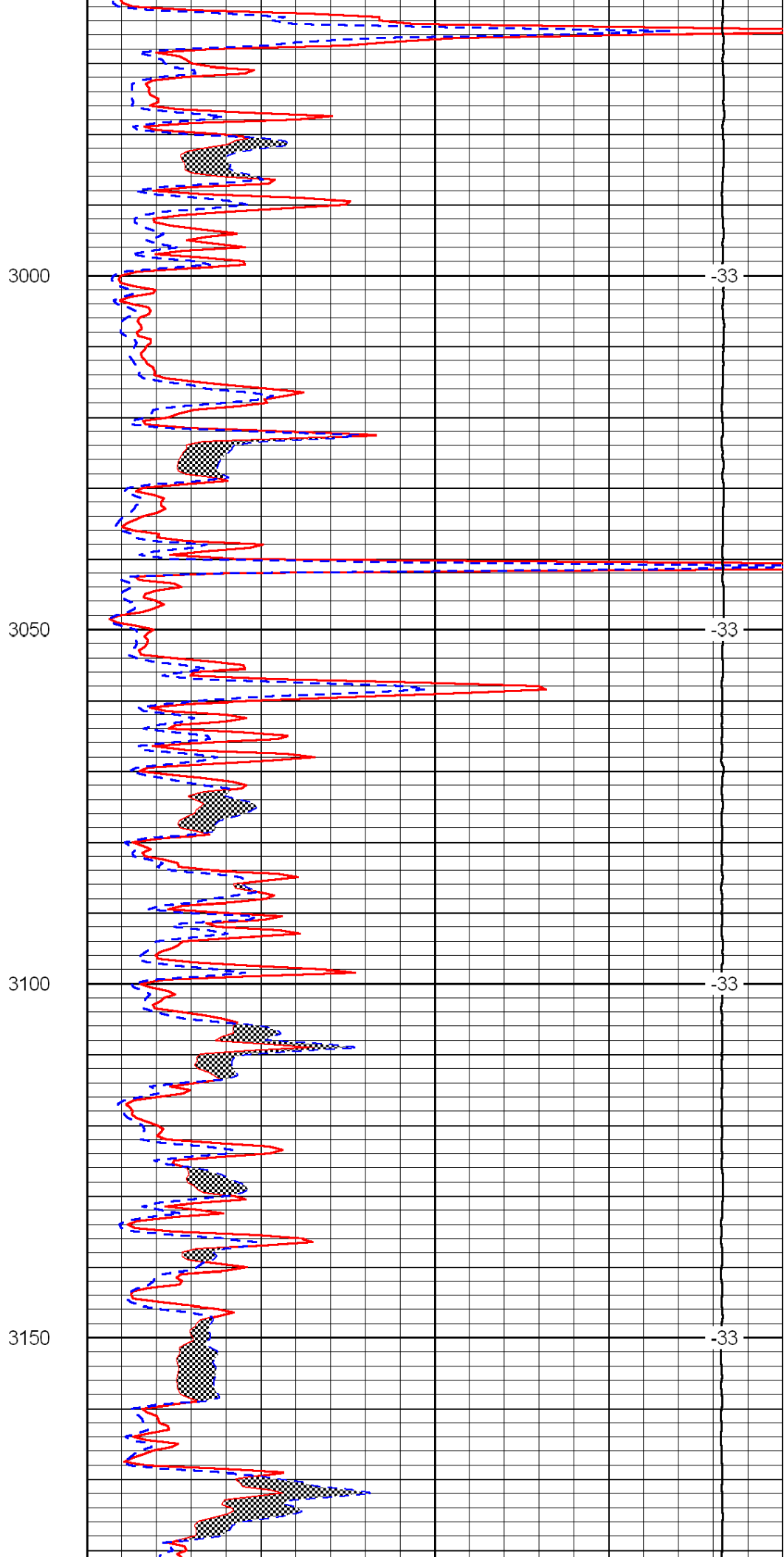
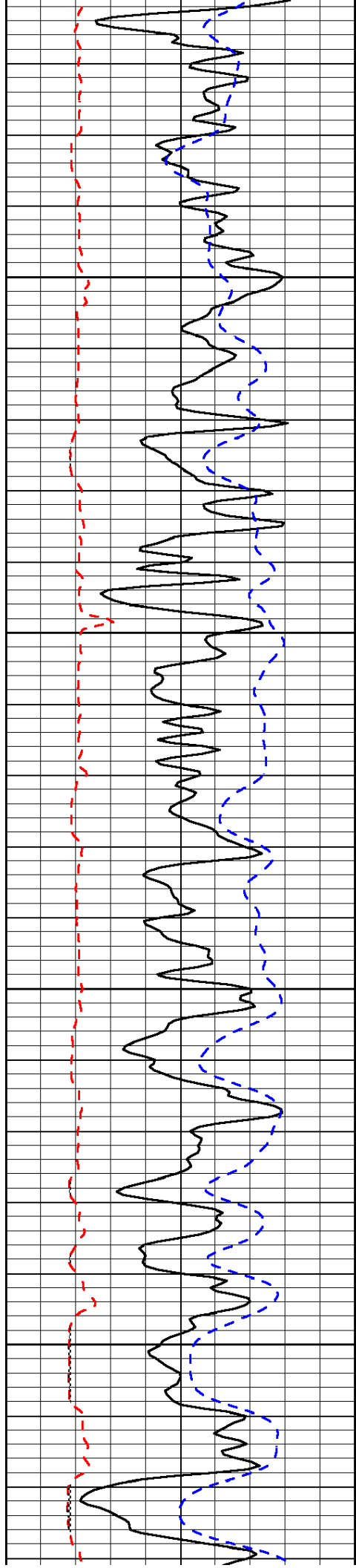
-34

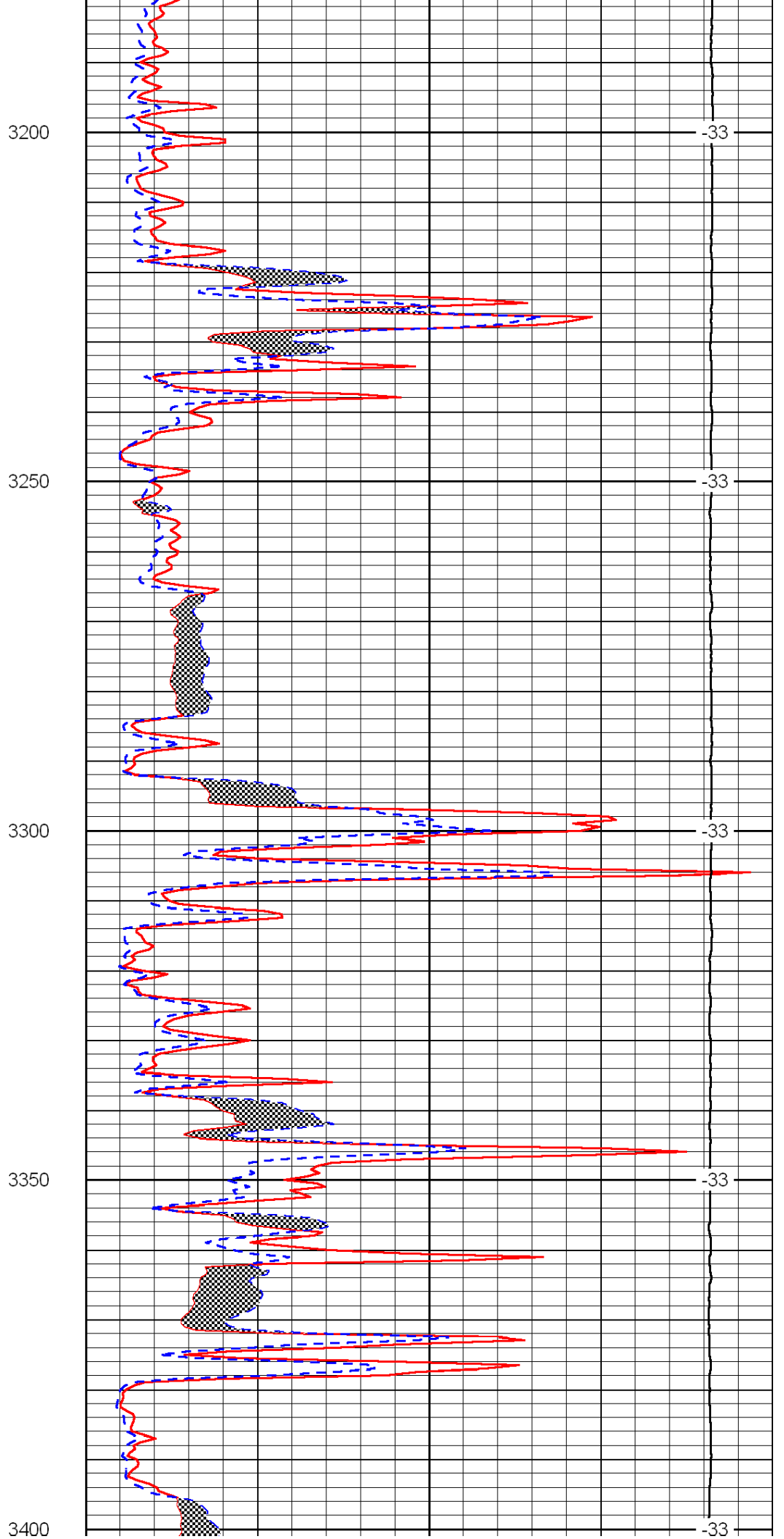
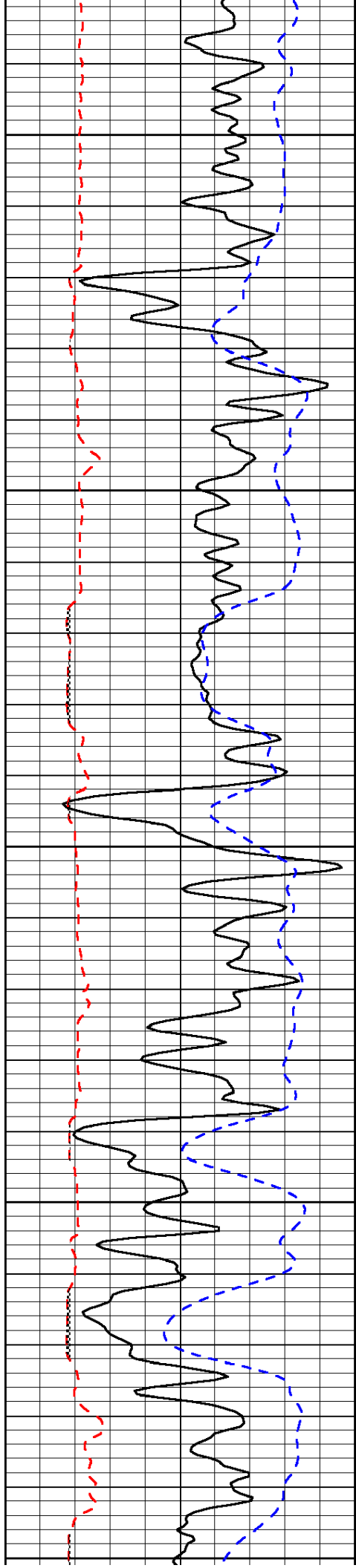
-35

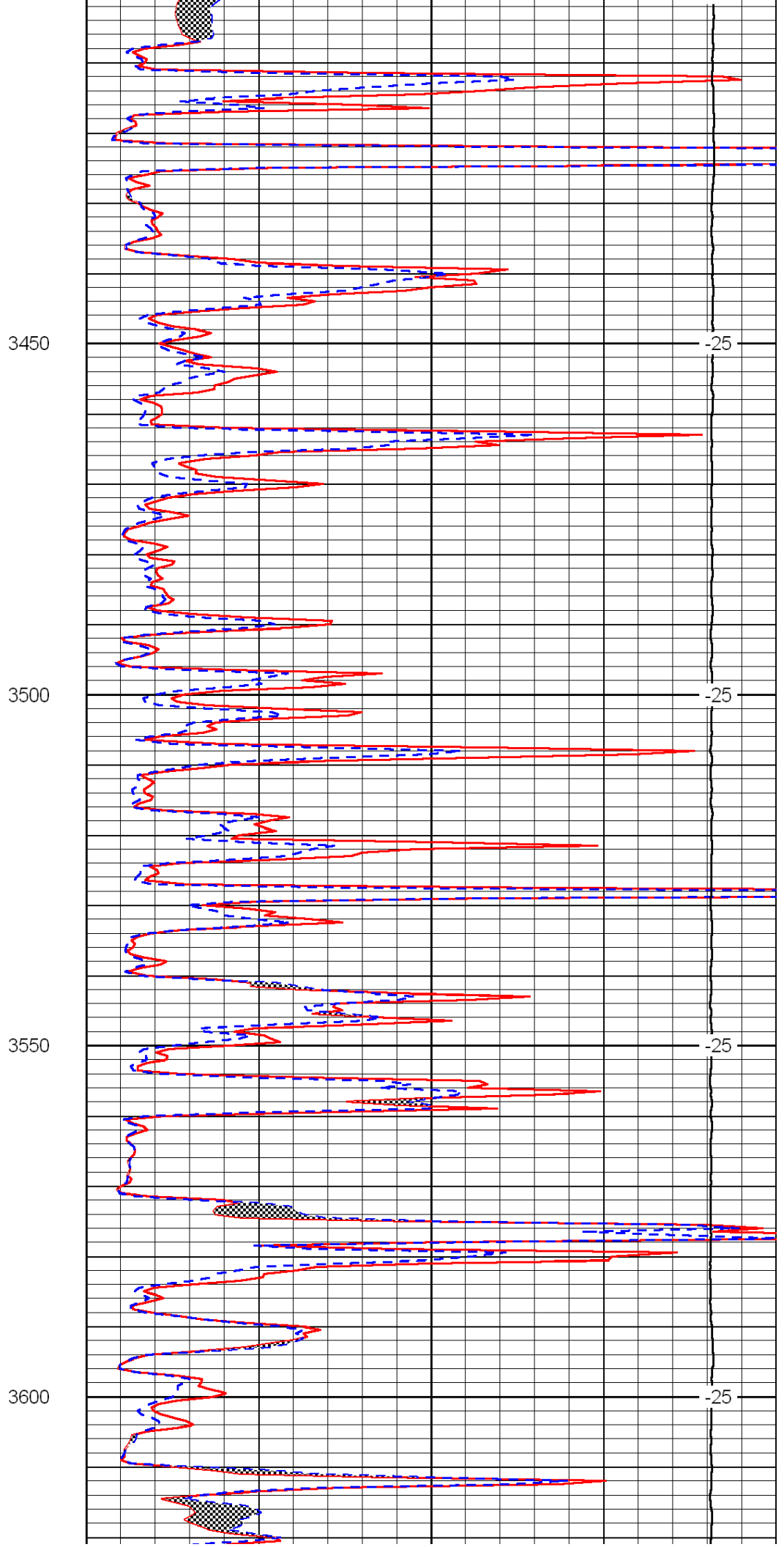
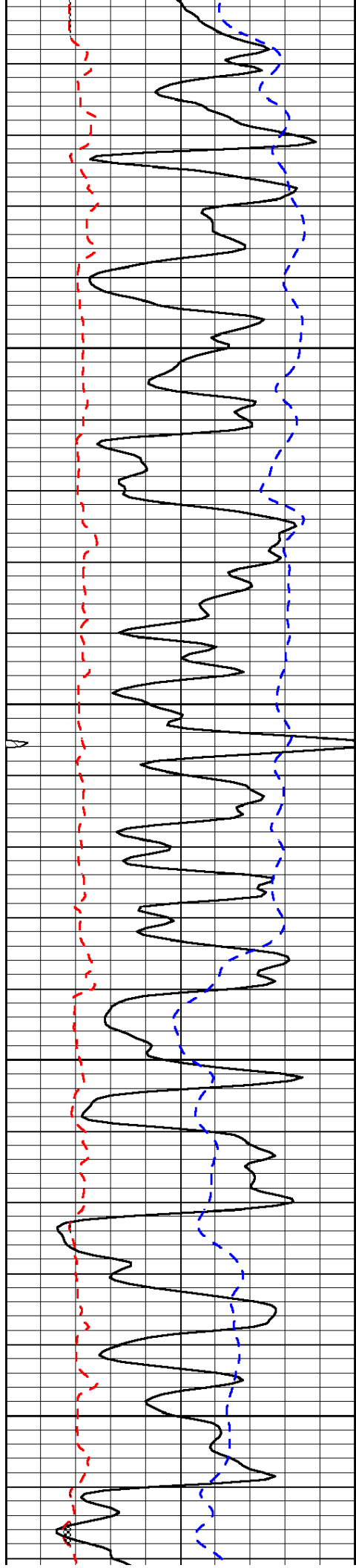
-34

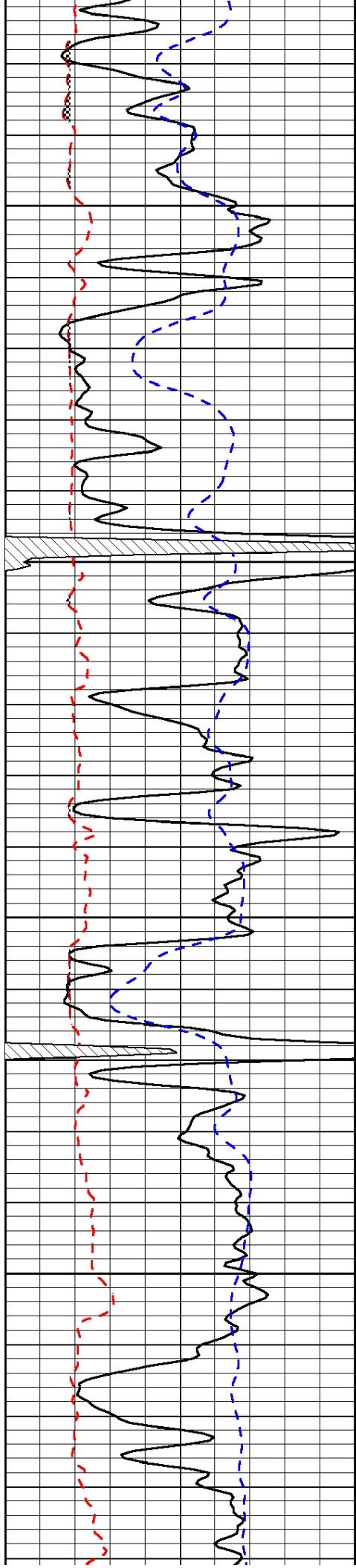
-34

-33







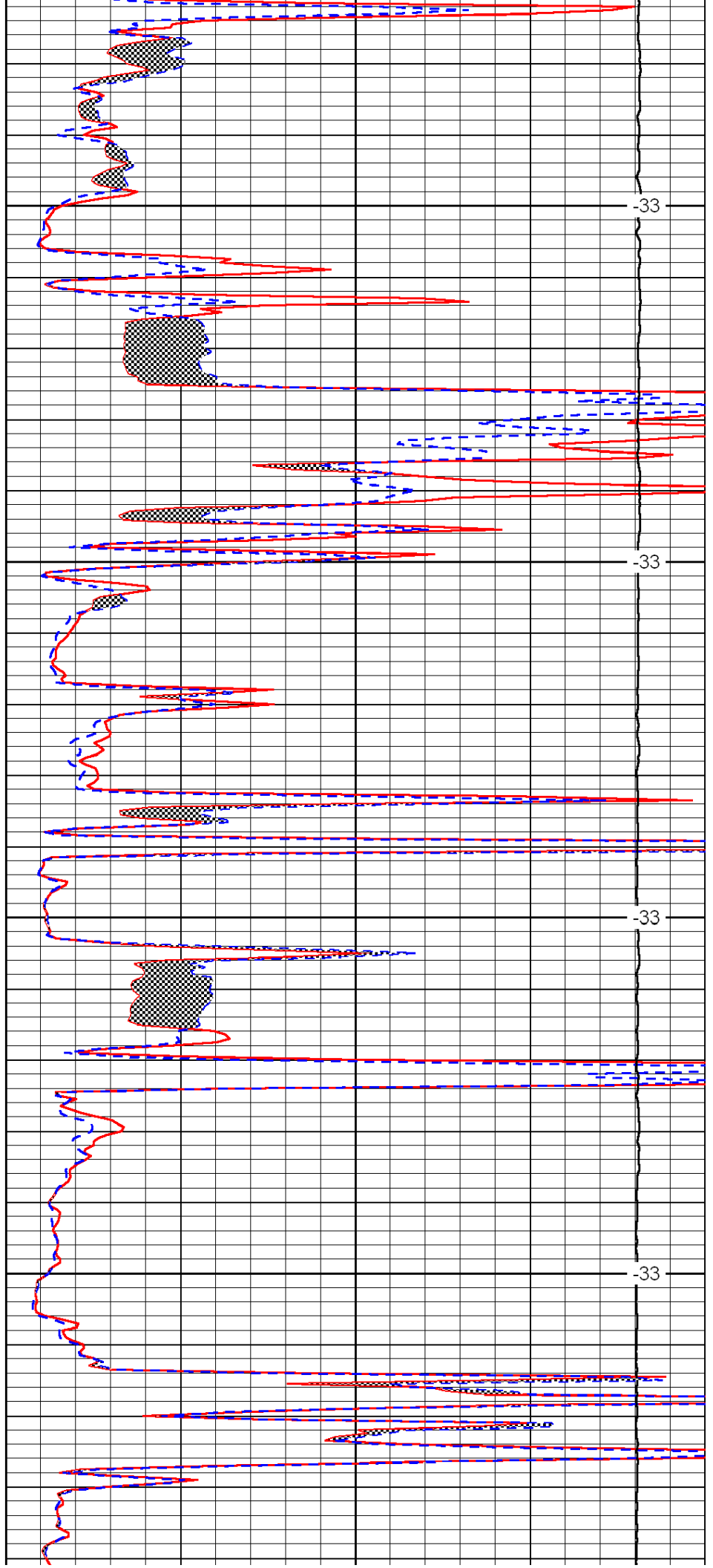


3650

3700

3750

3800

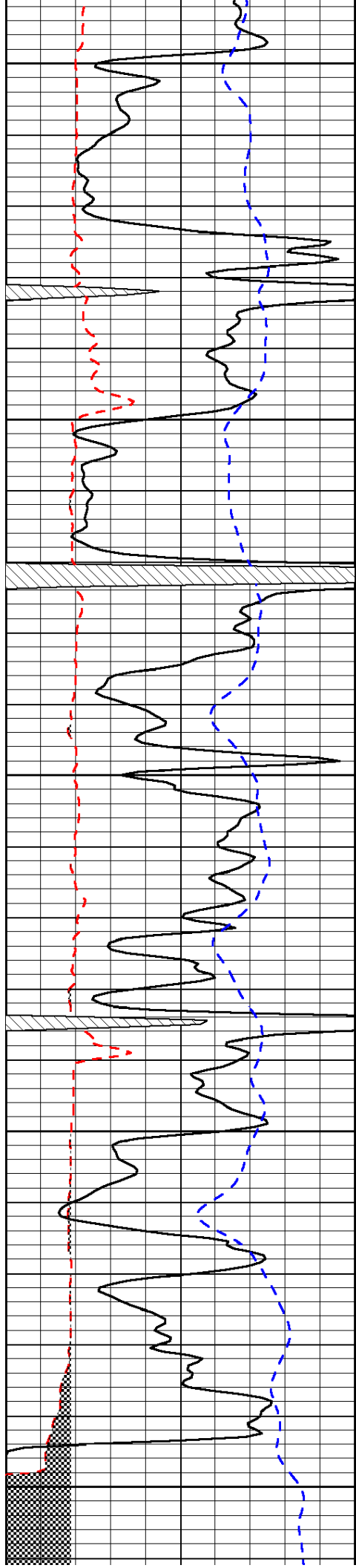


-33

-33

-33

-33



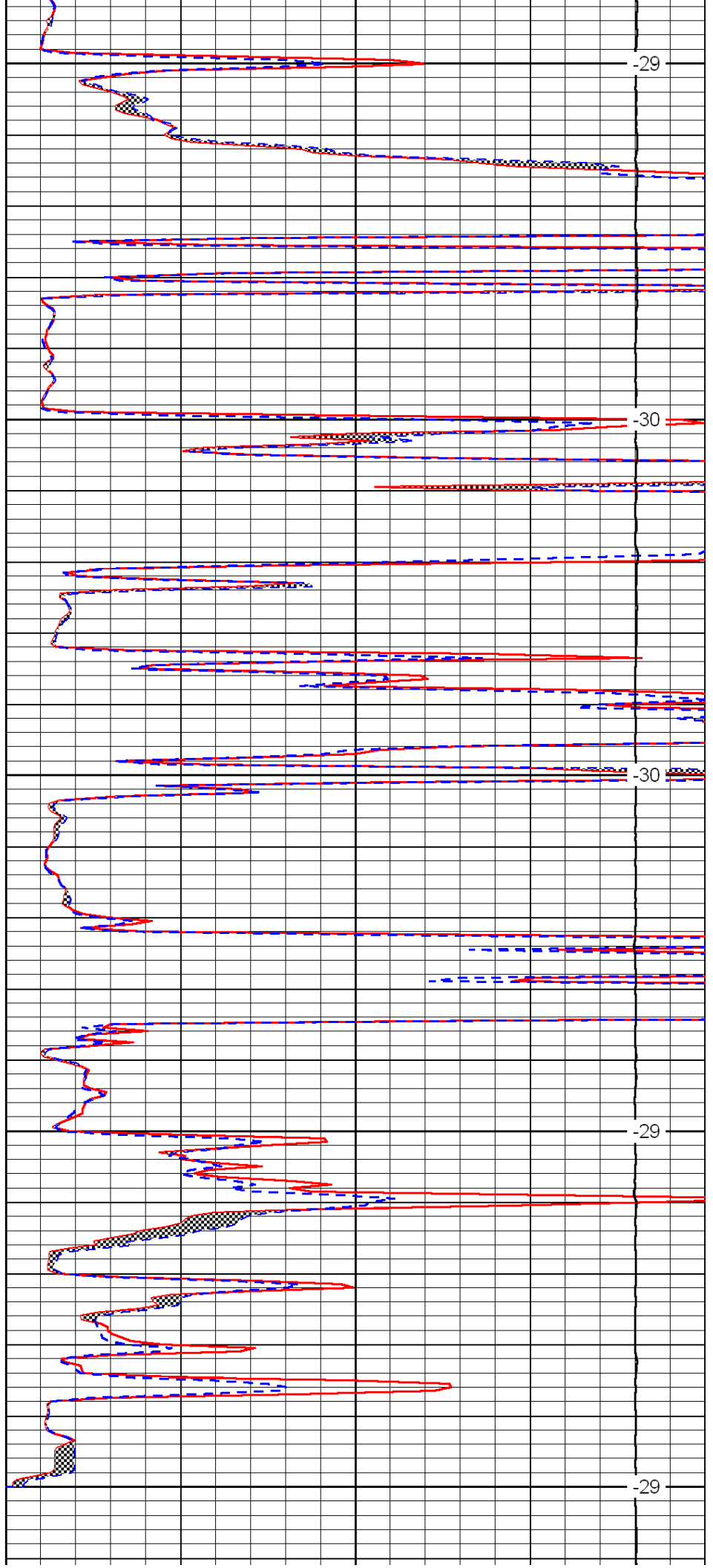
3850

3900

3950

4000

4050



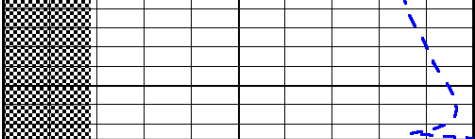
-29

-30

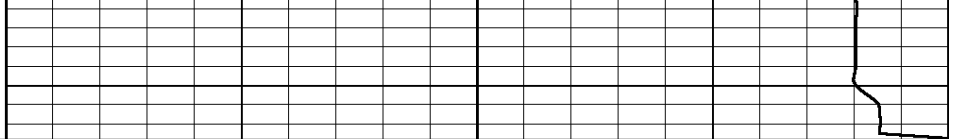
-30

-29

-29



0	Gamma Ray	150
6	Micro Log Caliper (GAPI)	16
-200	SP (mV)	0



0	Micro Inverse 1 X 1	40
0	Micro Normal 2"	40
15000	Line Weight	0

LSPD