



**Borehole Compensated
Sonic Log**

DIGITAL LOG (785) 625-3858

API No.	15-039-21,117-00-00
Company	Cholla Production, LLC
Well	May-Jording No. 1-23
Field	Jording
County	Decatur
State	Kansas
Location	W2 E2 NW NW 660' FNL & 760' FWL
Sec: 23	Twp: 2S Rge: 30W
Other Services	CNL/CDL MEL/DIL

Permanent Datum	Ground Level	Elevation 2830
Log Measured From	Kelly Bushing	5 Ft. Above Perm. Datum
Drilling Measured From	Kelly Bushing	
Date	6/6/2010	Elevation K.B. 2835 D.F. 2830 G.L. 2830

Run Number	Two
Type Log	BHC Sonic
Depth Driller	4070
Depth Logger	4070
Bottom Logged Interval	4059
Top Logged Interval	300
Type Fluid In Hole	Chemical
Salinity, PPM CL	1300
Density	9.1
Level	Full
Max. Rec. Temp. F	119
Operating Rig Time	4 Hours
Equipment -- Location	10 Days
Recorded By	J. Long
Witnessed By	Bill Goff

Borehole Record				Casing Record			
Run No.	Bit	From	To	Size	Wgt.	From	To
1	12.25	00	303	8.625	24#	00	303
2	7.875	303	4070				

<<< Fold Here >>>

All interpretations are opinions based on inferences from electrical or other measurements and we cannot and do not guarantee the accuracy or correctness of any interpretation, and we shall not, except in the case of gross or willful negligence on our part, be liable or responsible for any loss, costs, damages, or expenses incurred or sustained by anyone resulting from any interpretation made by any of our officers, agents or employees. These interpretations are also subject to our general terms and conditions set out in our current Price Schedule.

Comments

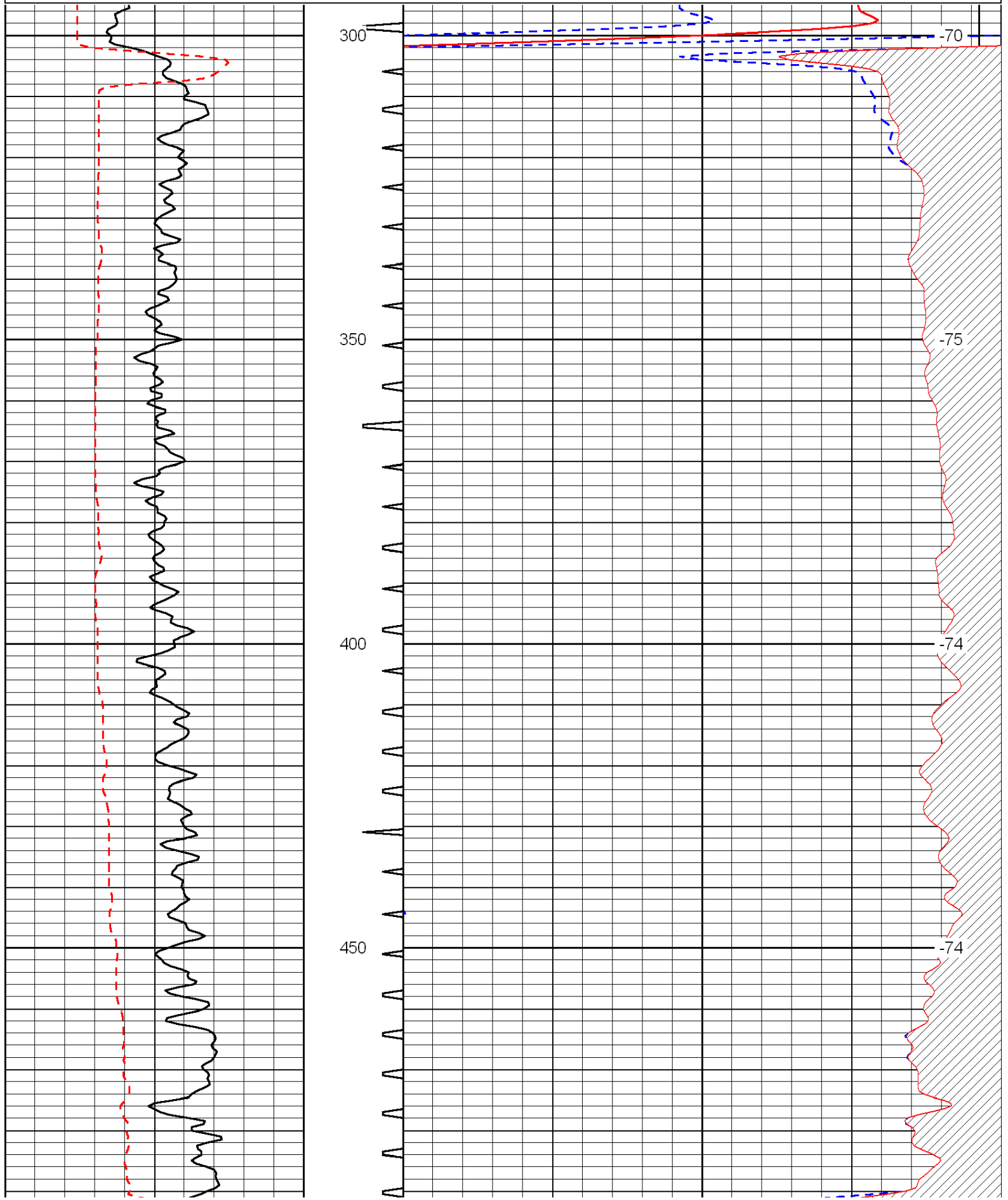
Thank you for using Log-Tech, Inc.
(785) 625-3858

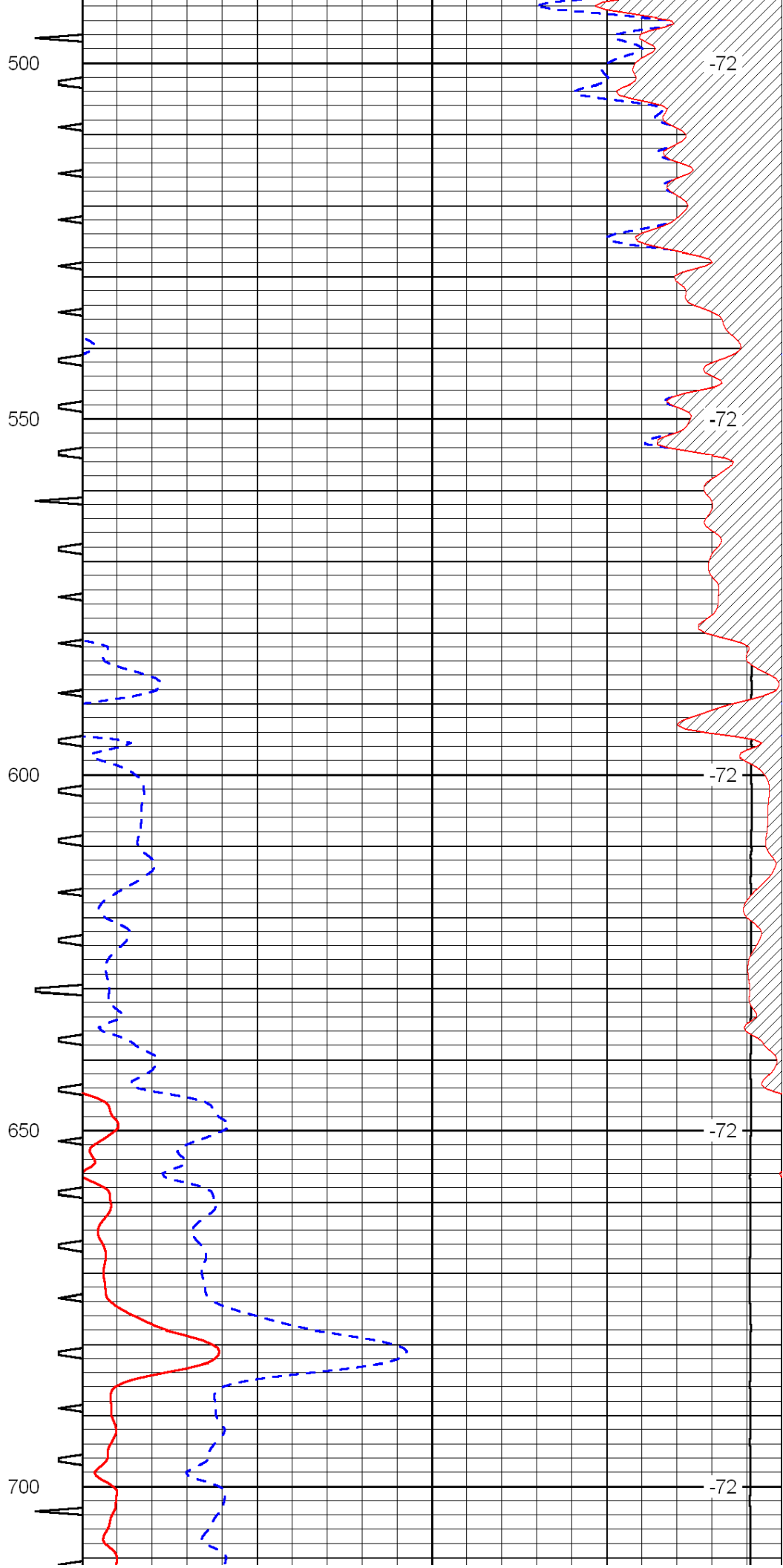
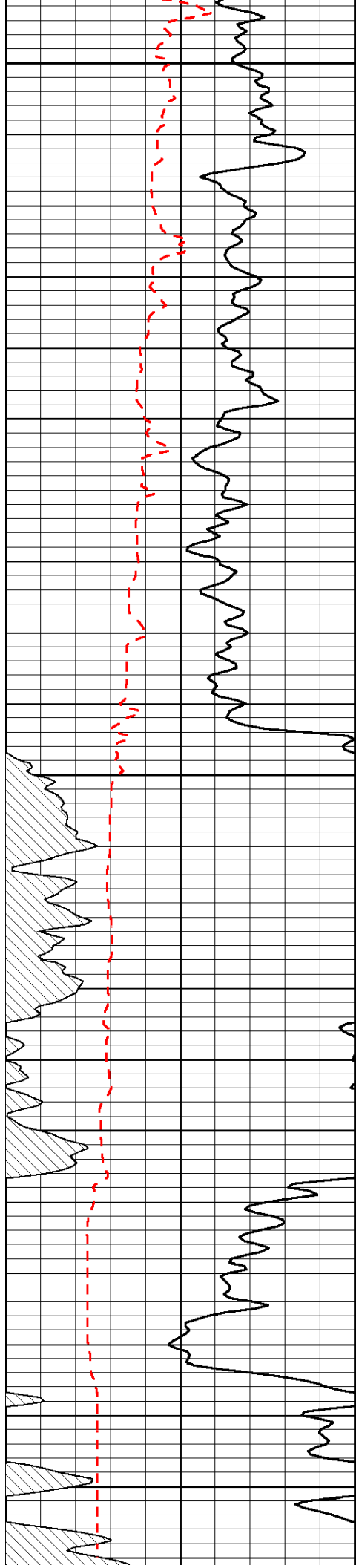
 Oberlin, 7 West to 7 Rd, 1 North to T, 1/2 West, 2 North, 1/2 East, South Into

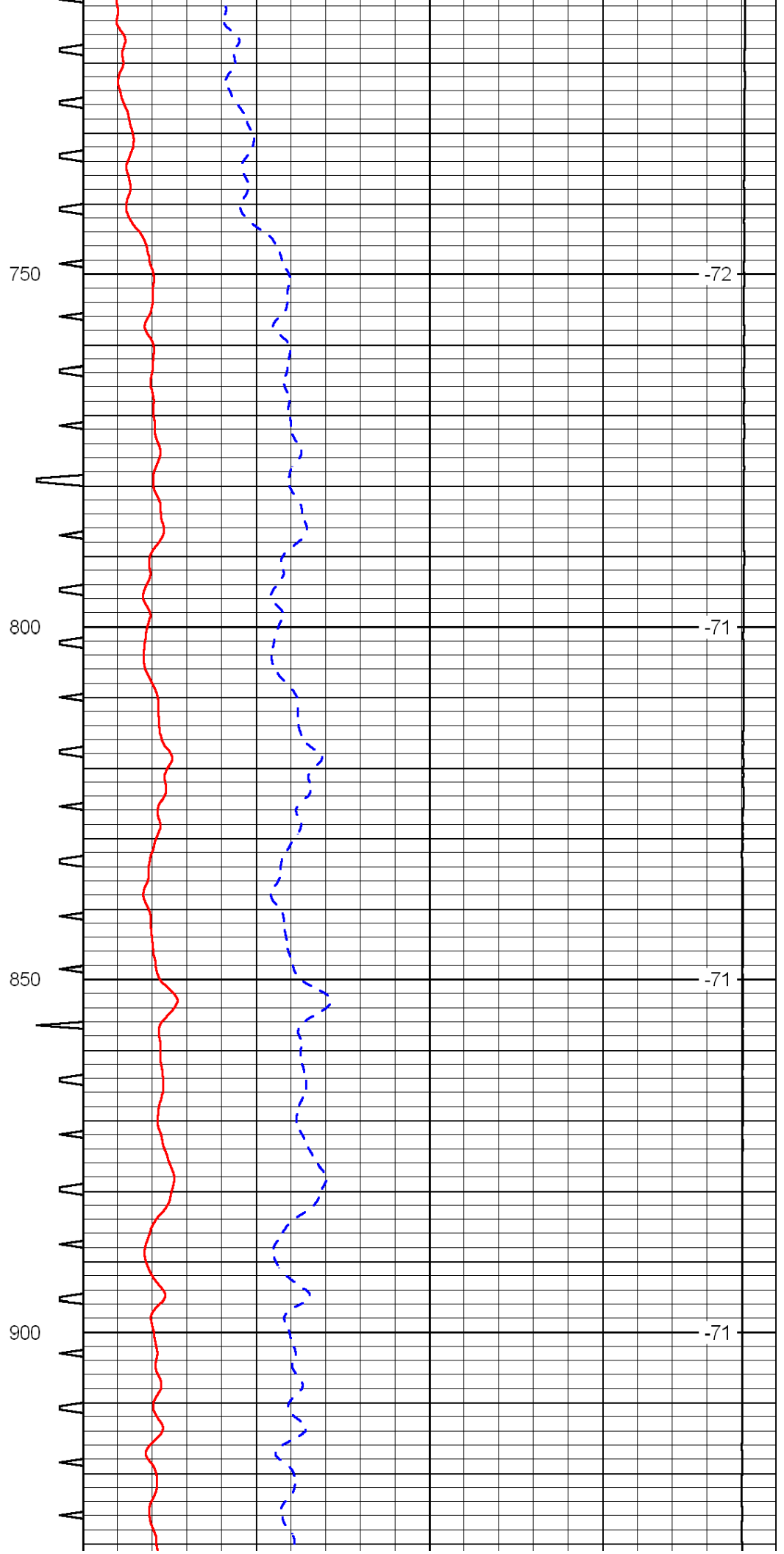
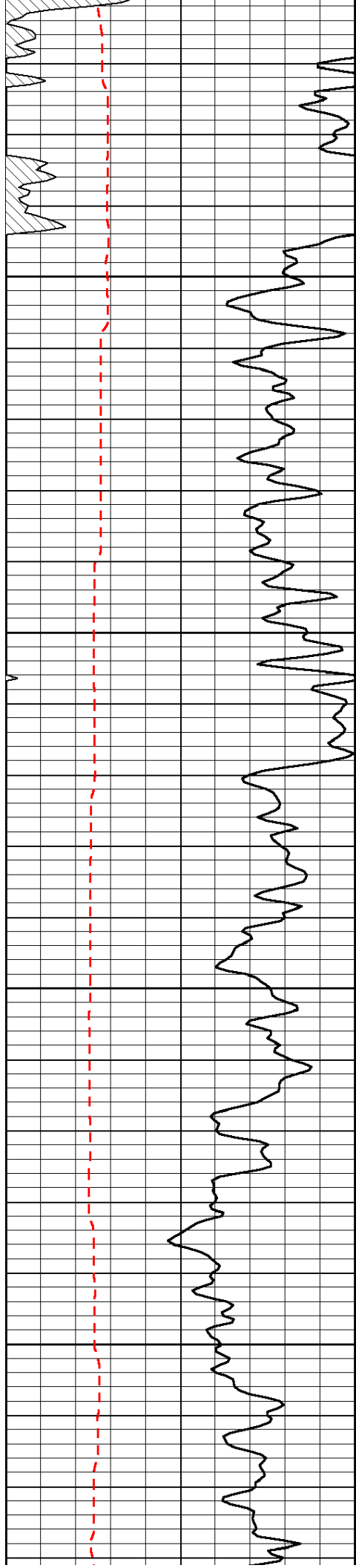
Database File: c:\warrior\data\cholla_may-jording no. 1-23\cholla hd.db
 Dataset Pathname: dil\cholstck
 Presentation Format: sonic
 Dataset Creation: Sun Jun 06 19:07:05 2010
 Charted by: Depth in Feet scaled 1:240

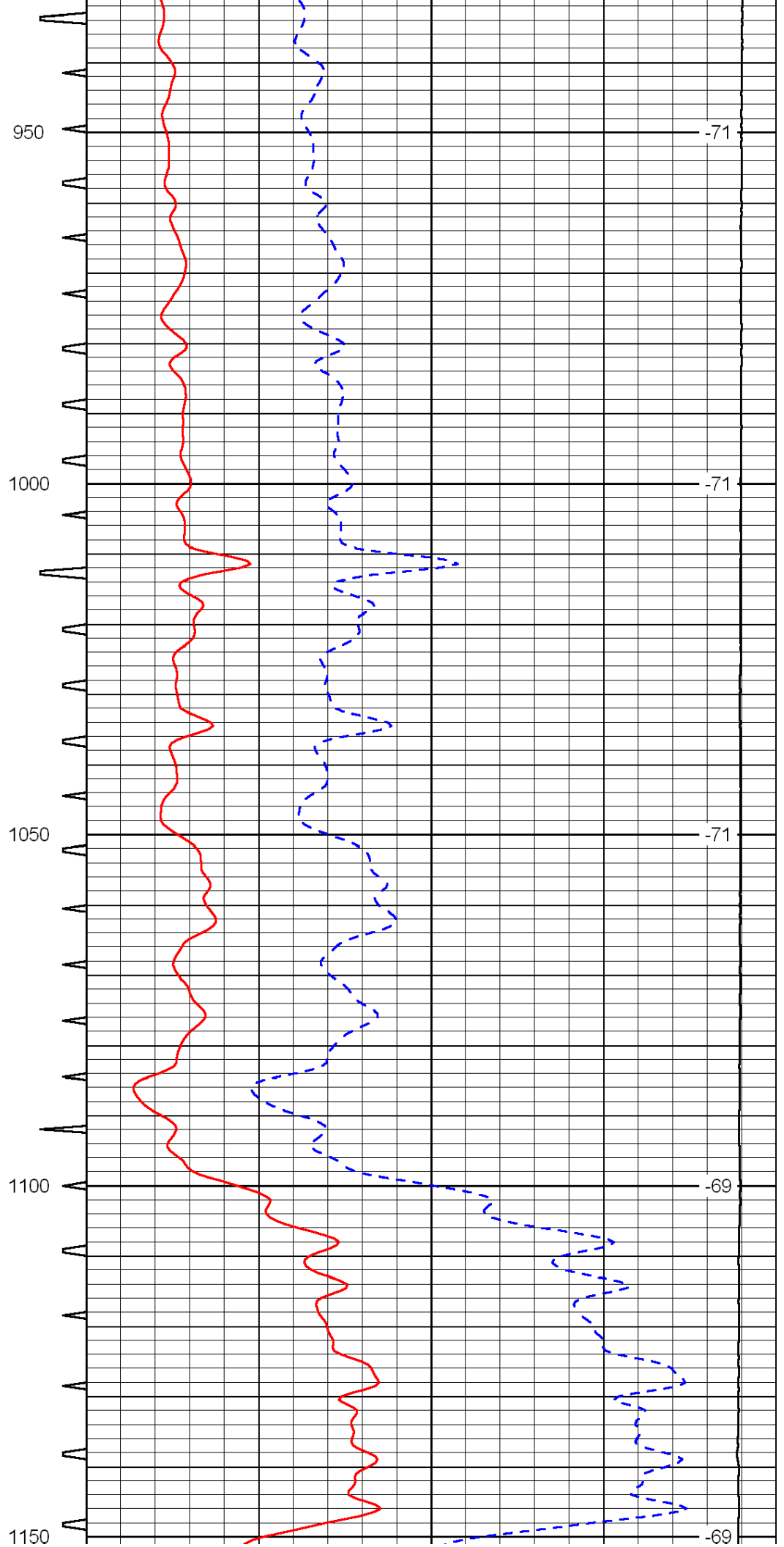
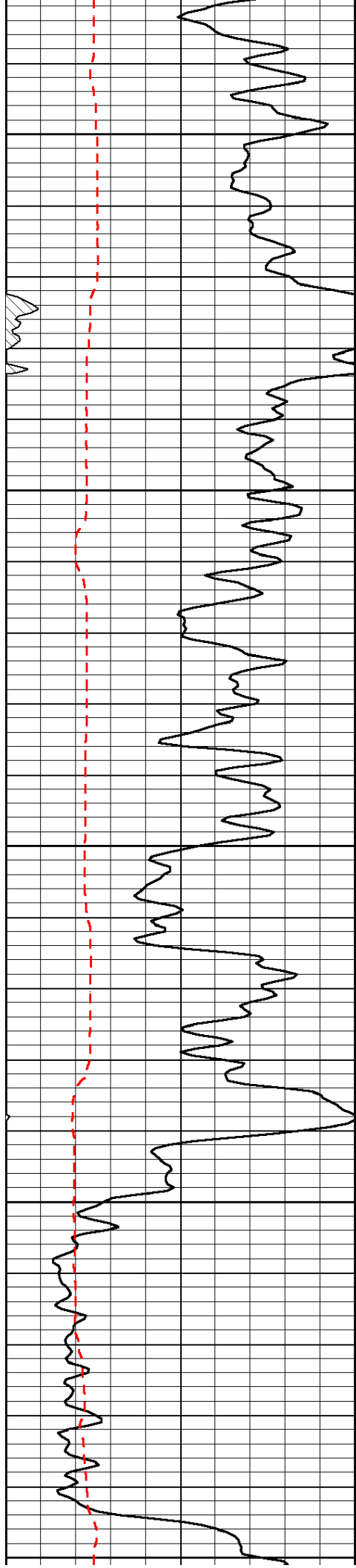
0	Gamma Ray	150	Sonic Int	140	Delta Time (usec/ft)	40
150	Gamma Ray	300	5	0	SPOR	-10
6	Caliper (GAPI)	16		15000	LTEN (lb)	0

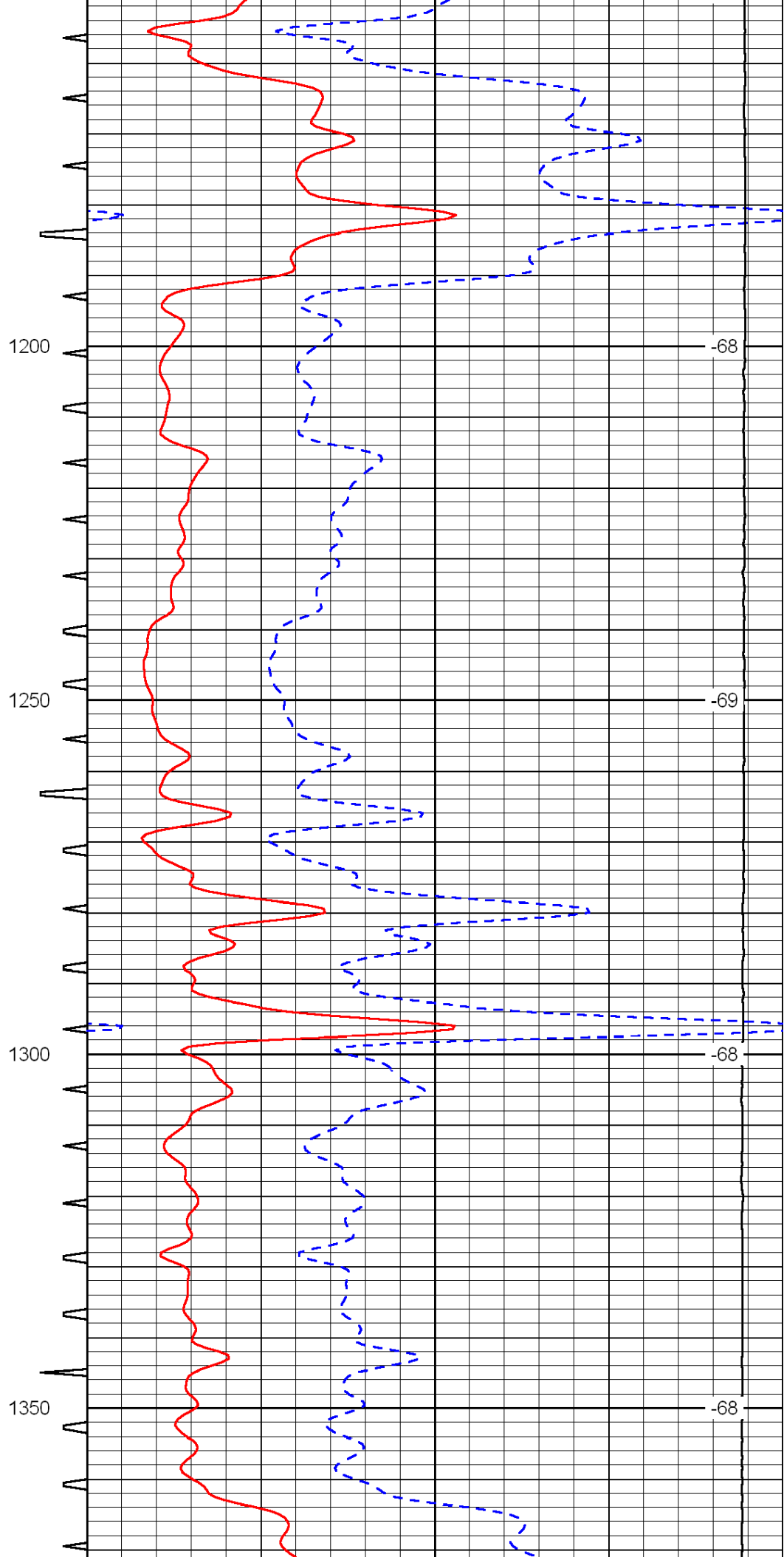
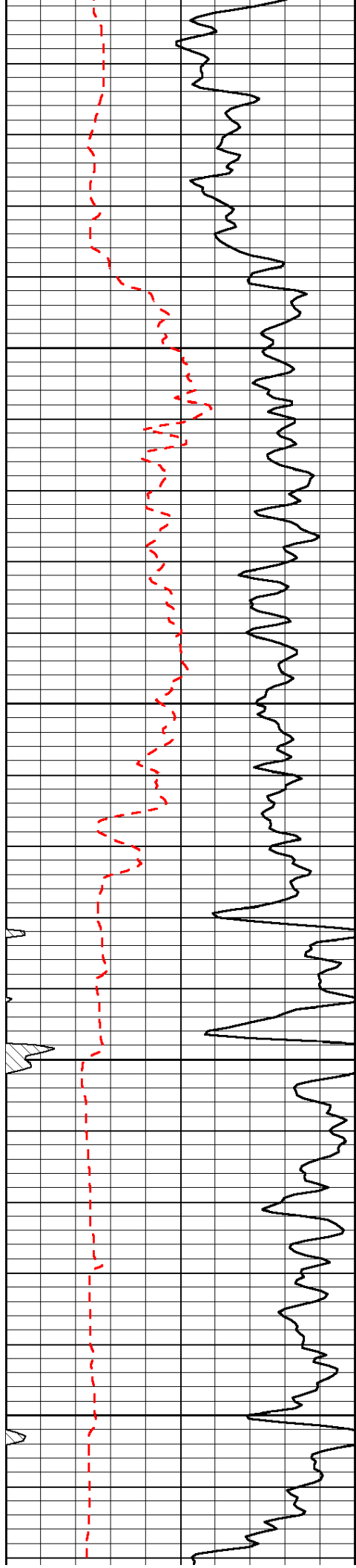
LSPD

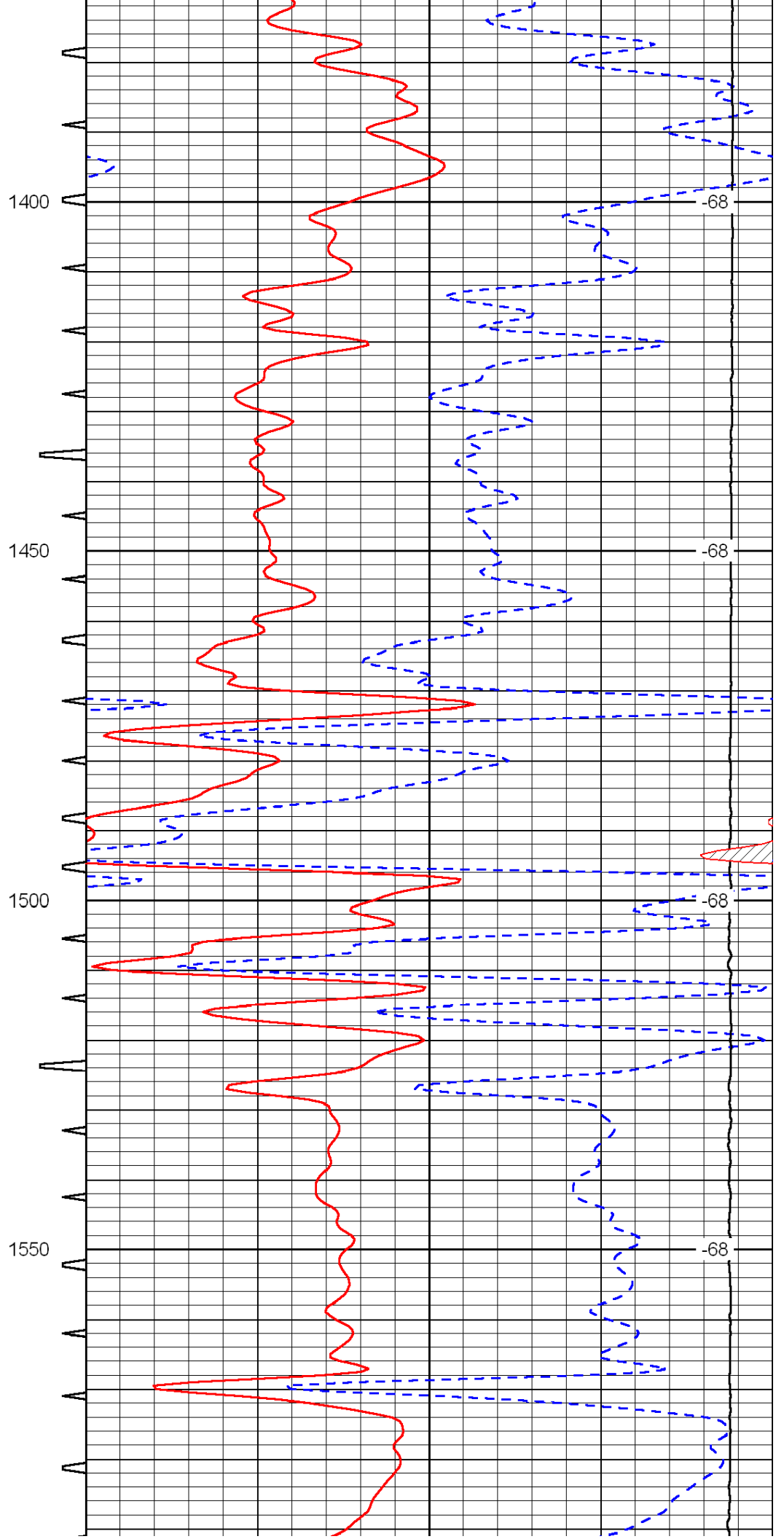
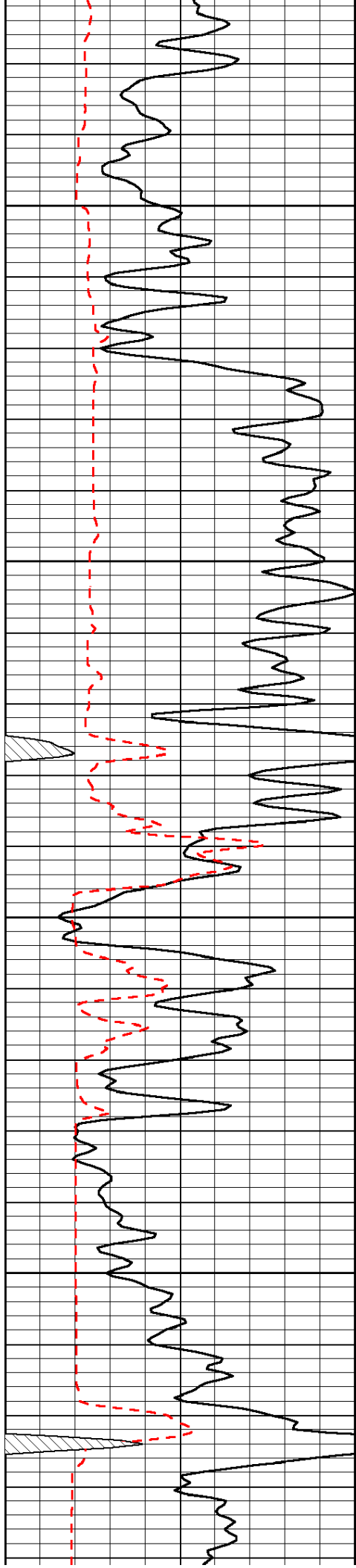


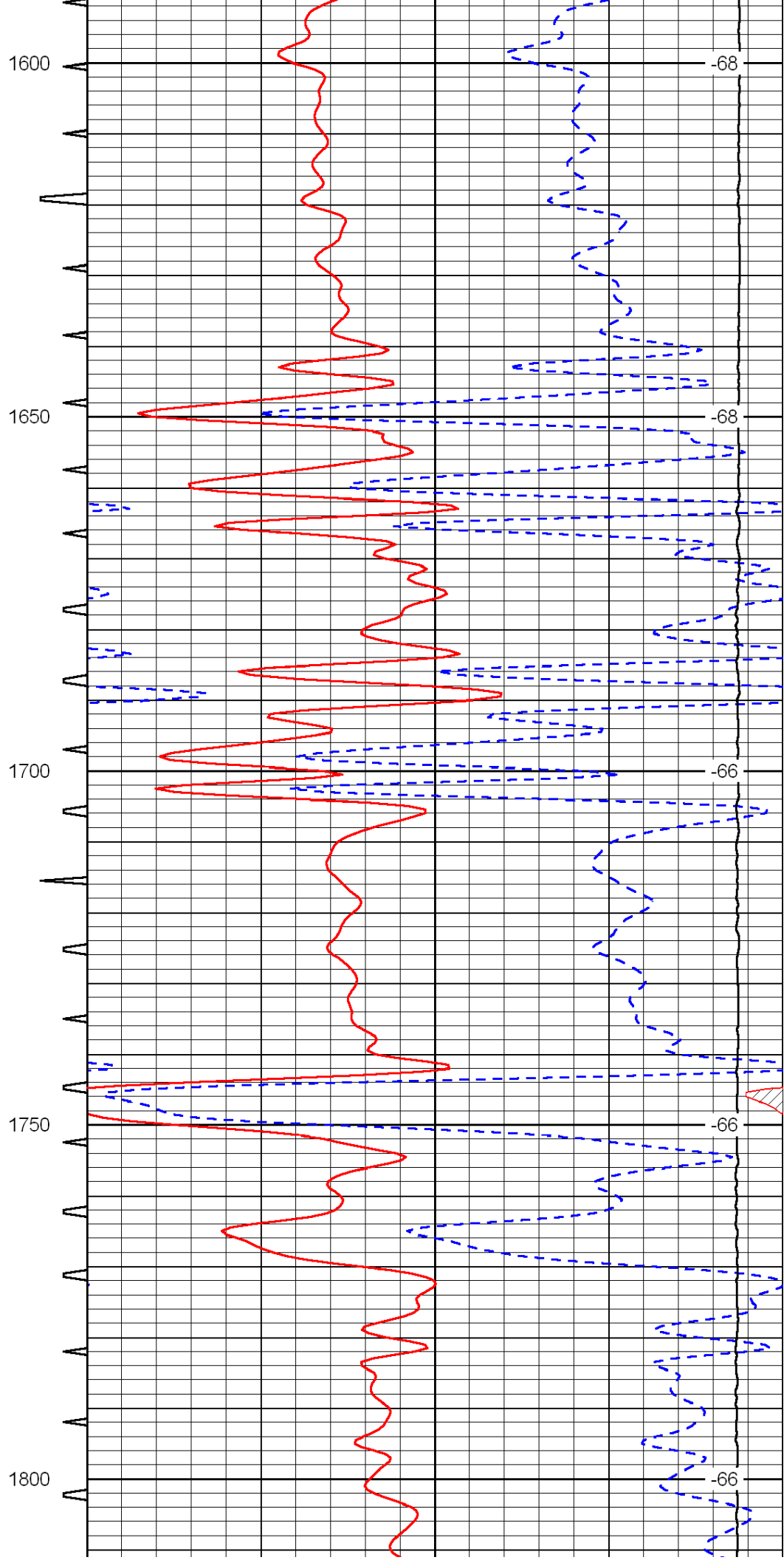
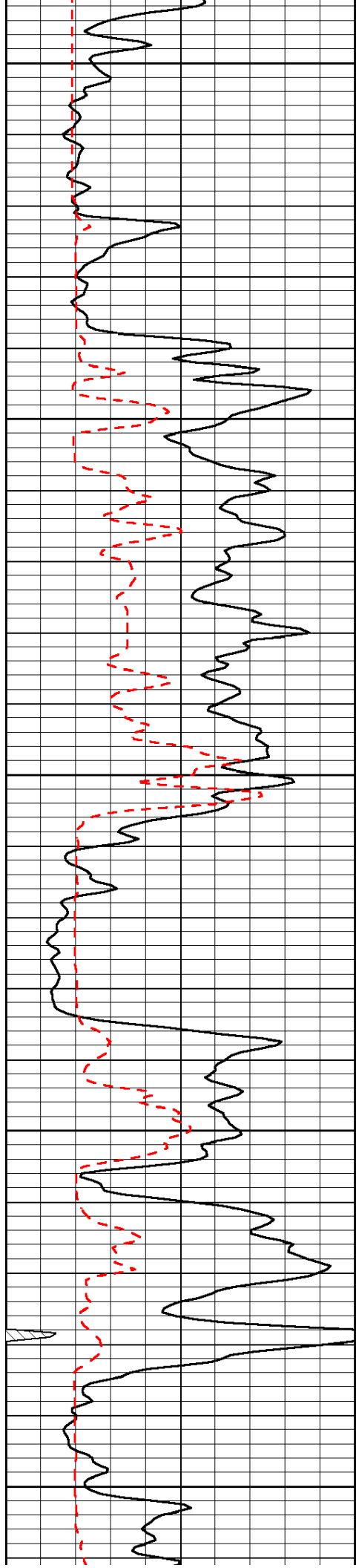


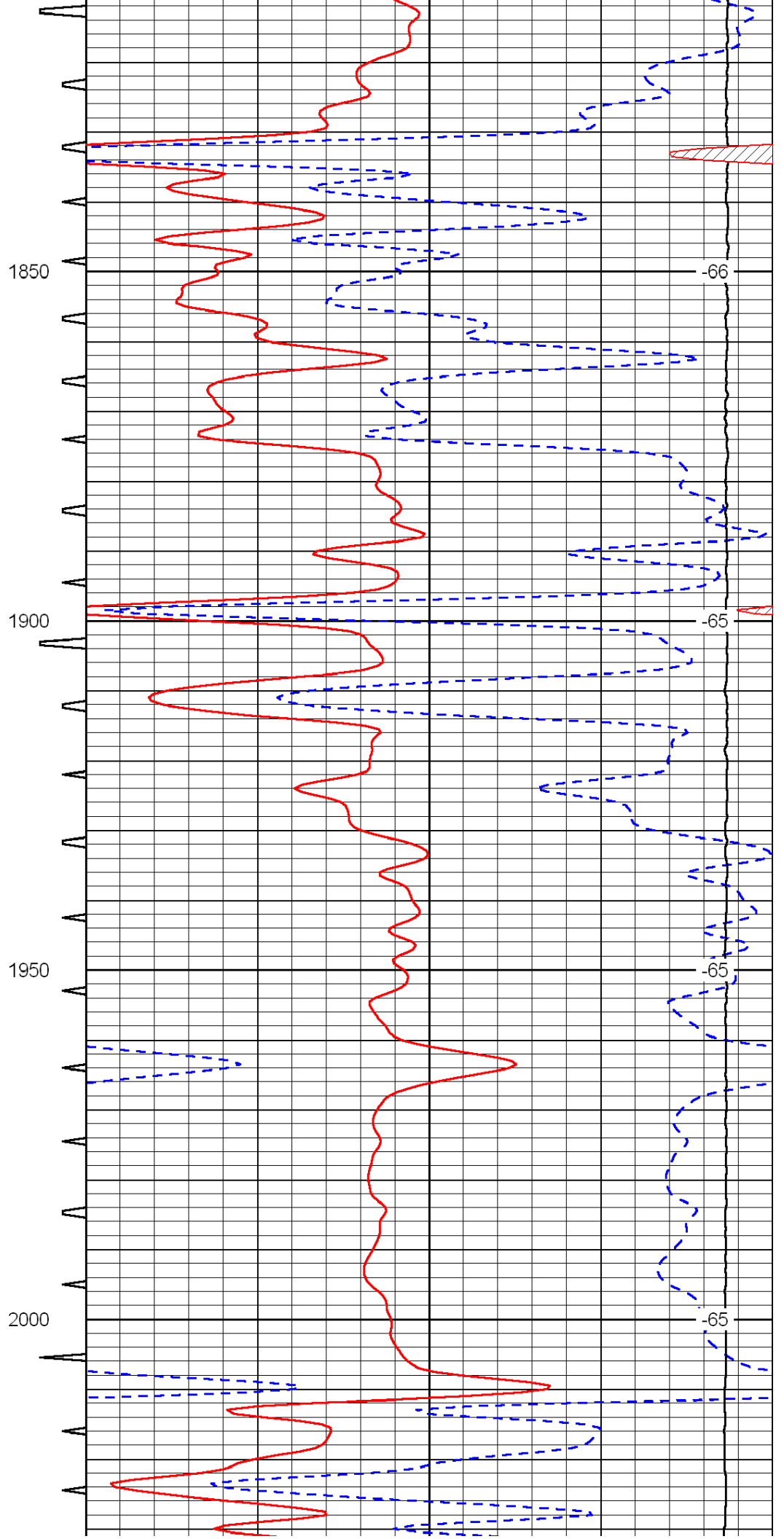
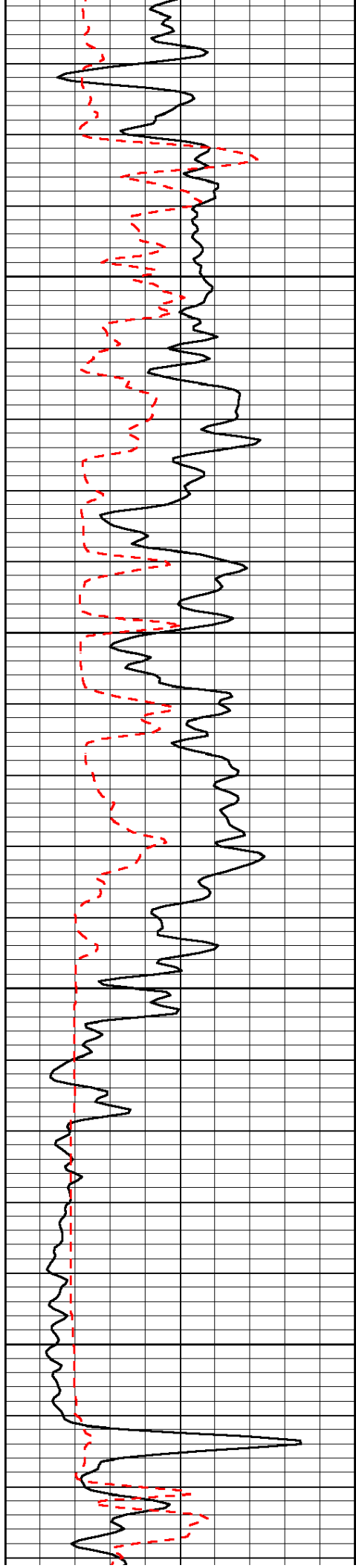


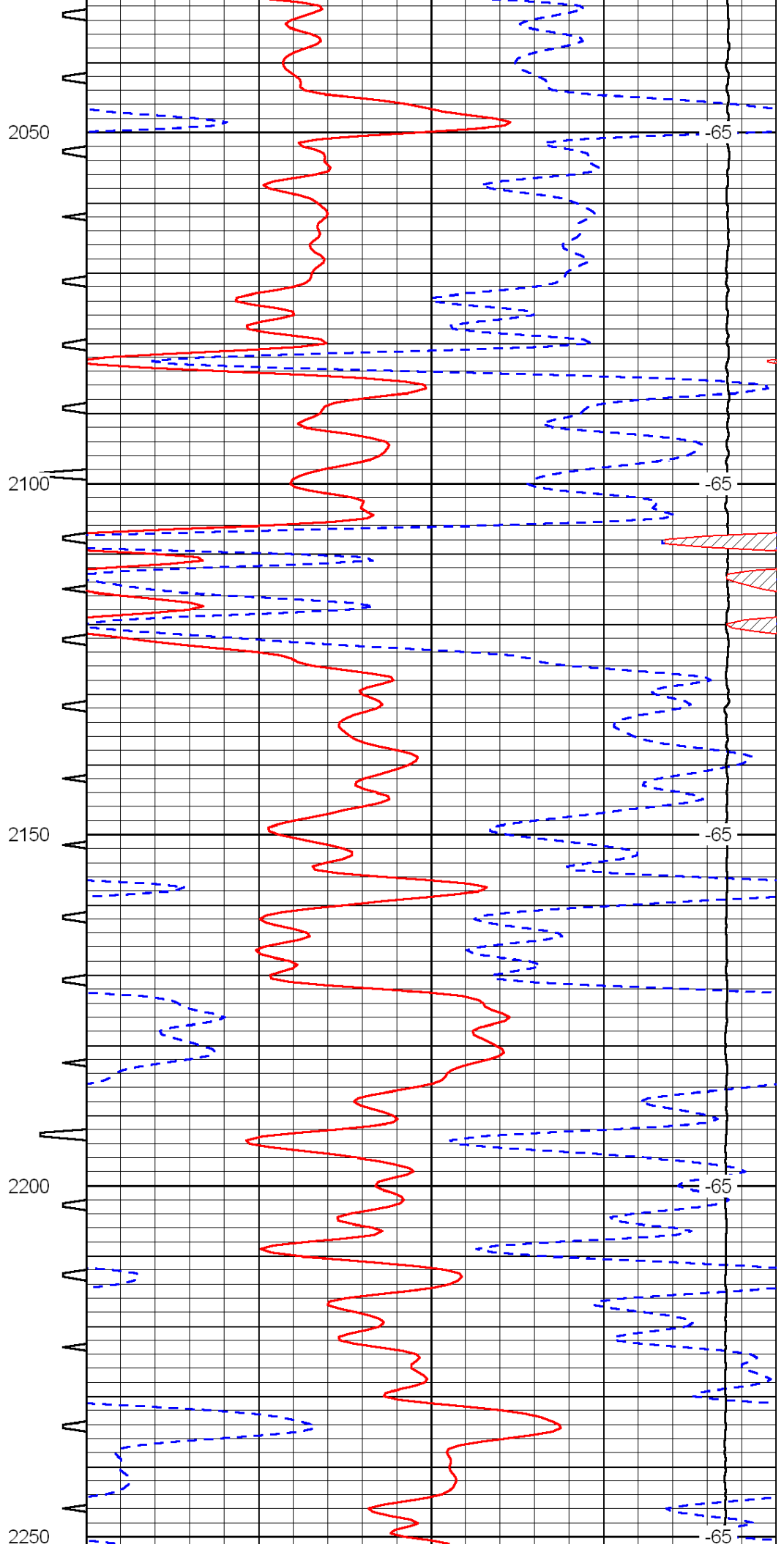
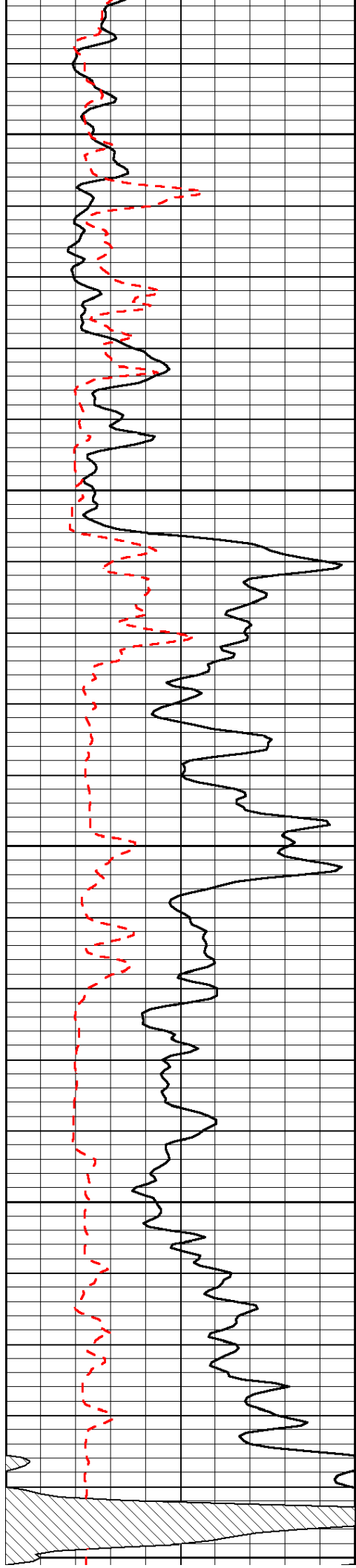


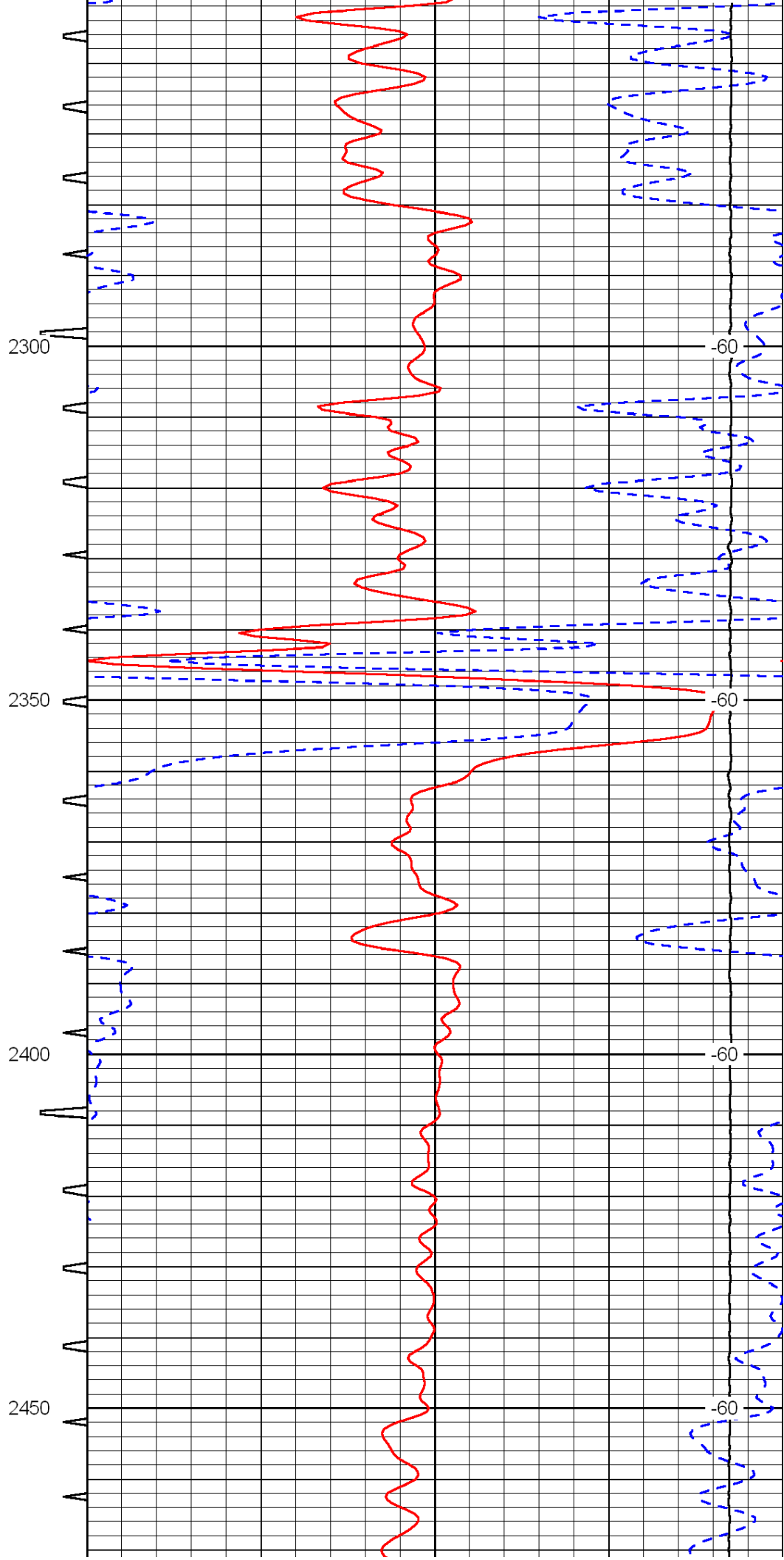
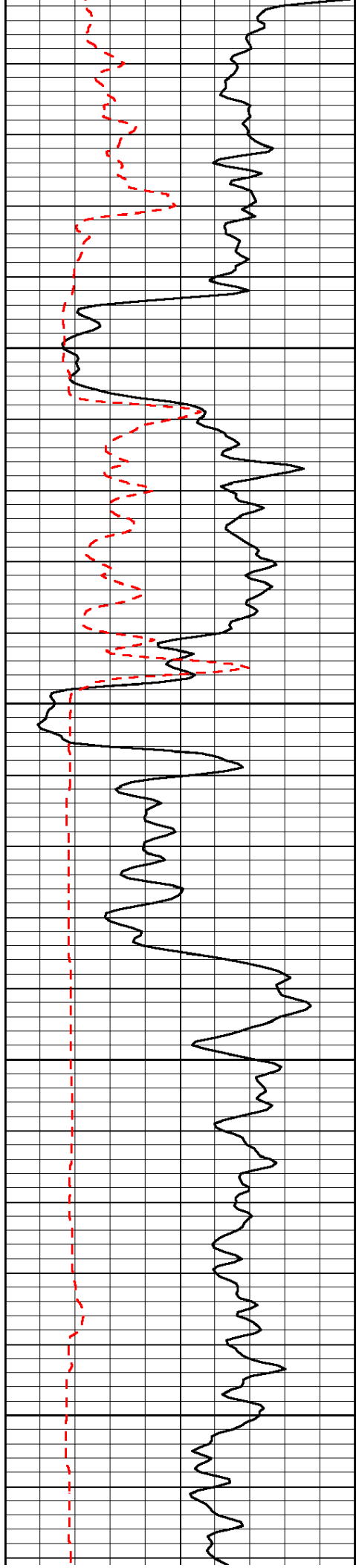


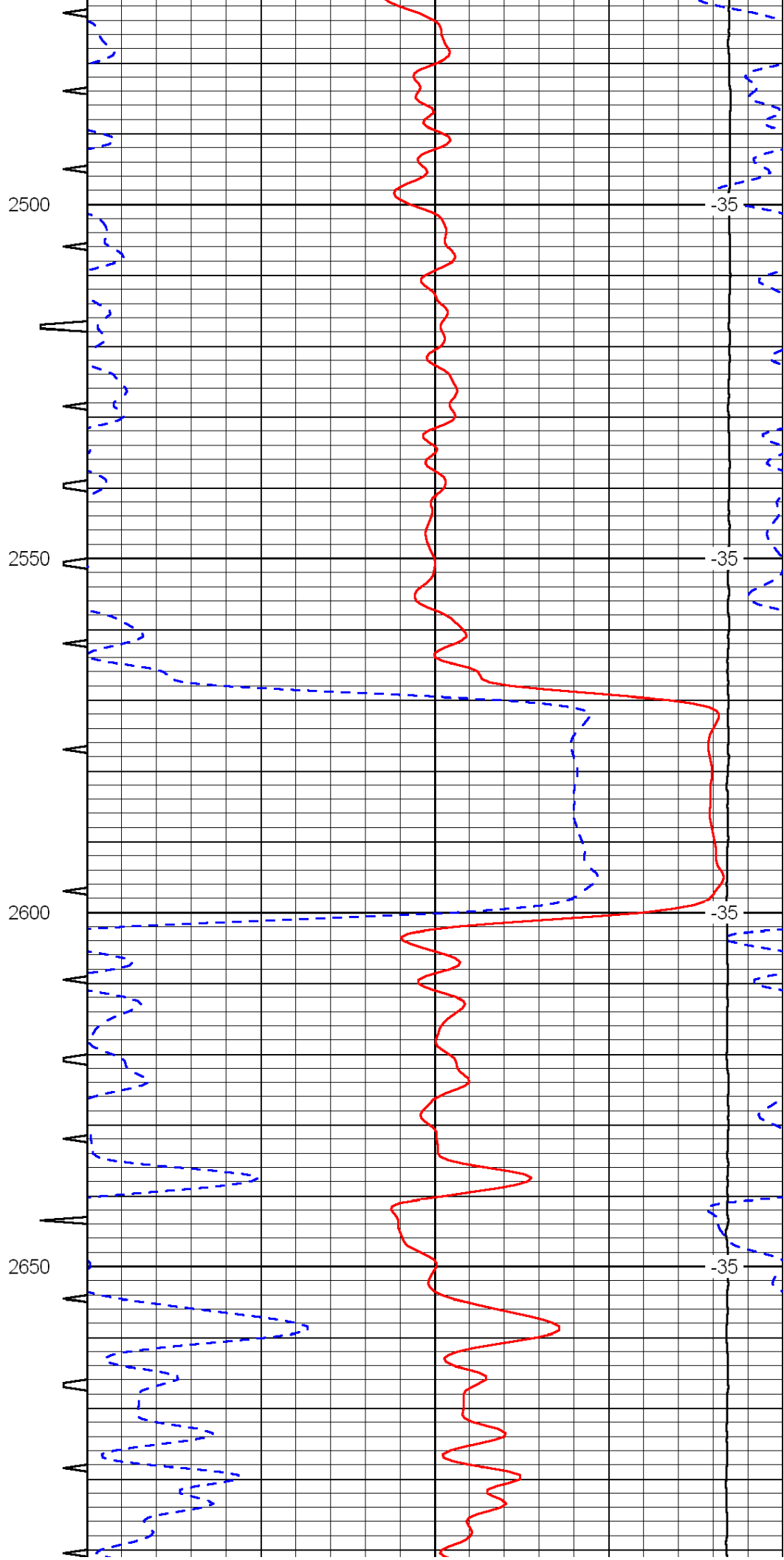
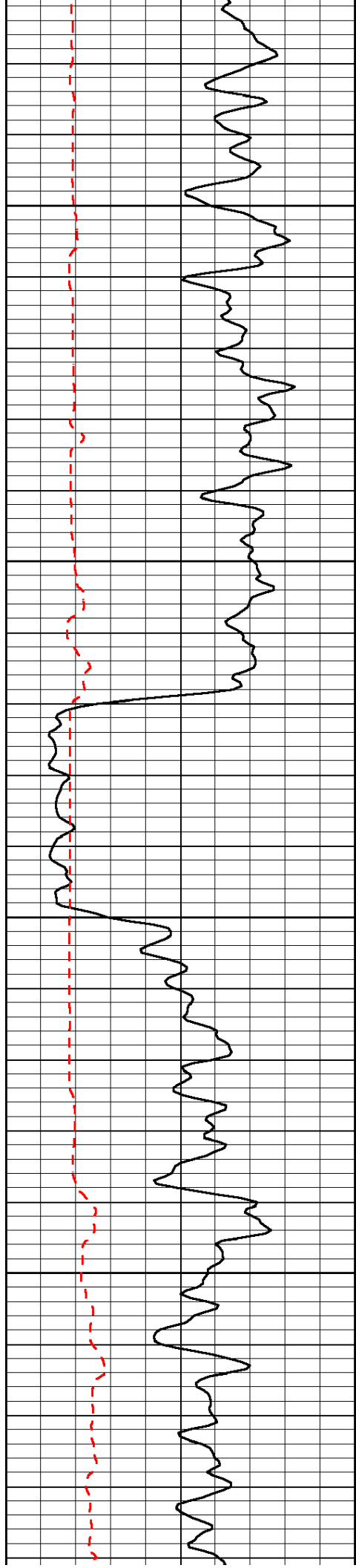


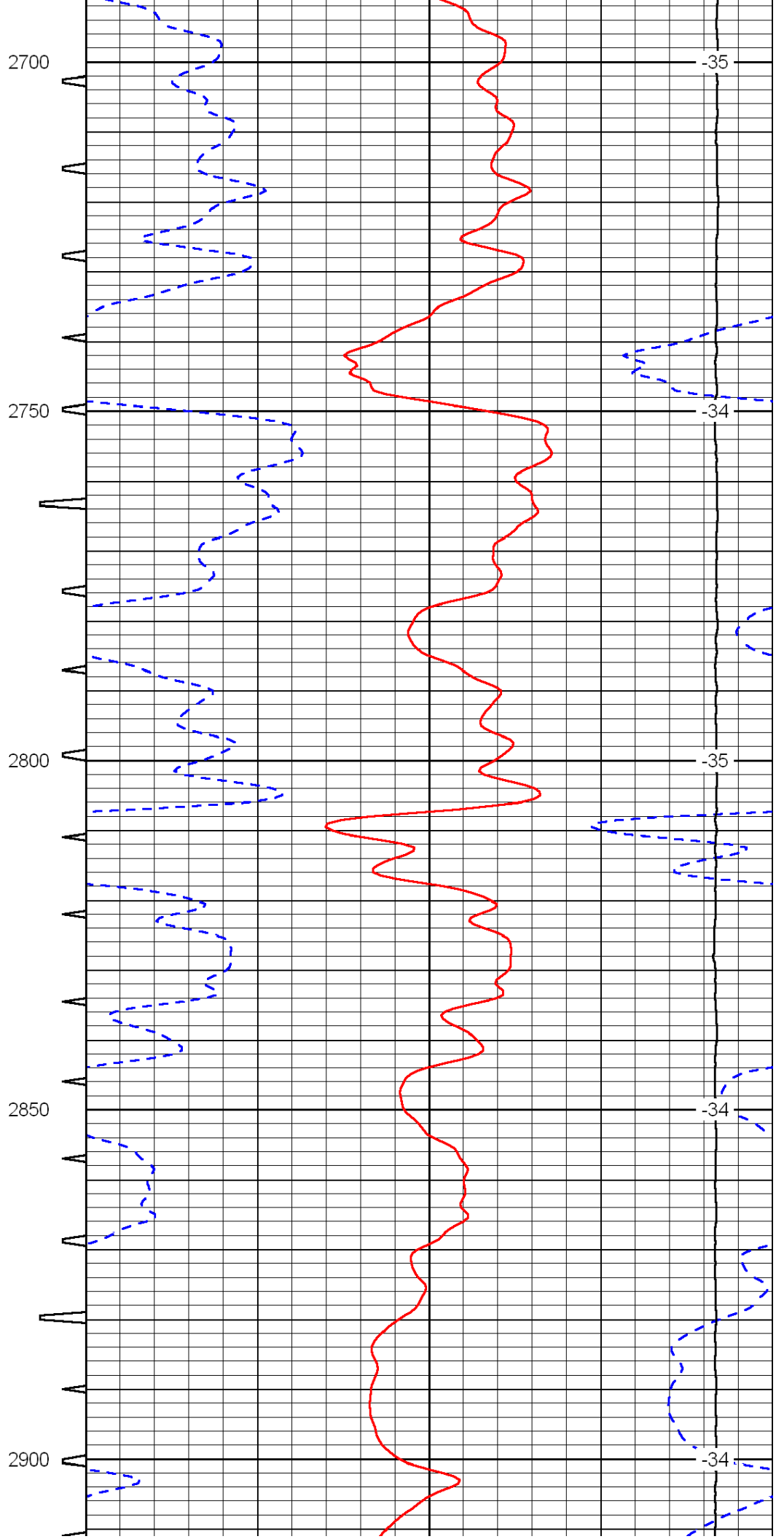
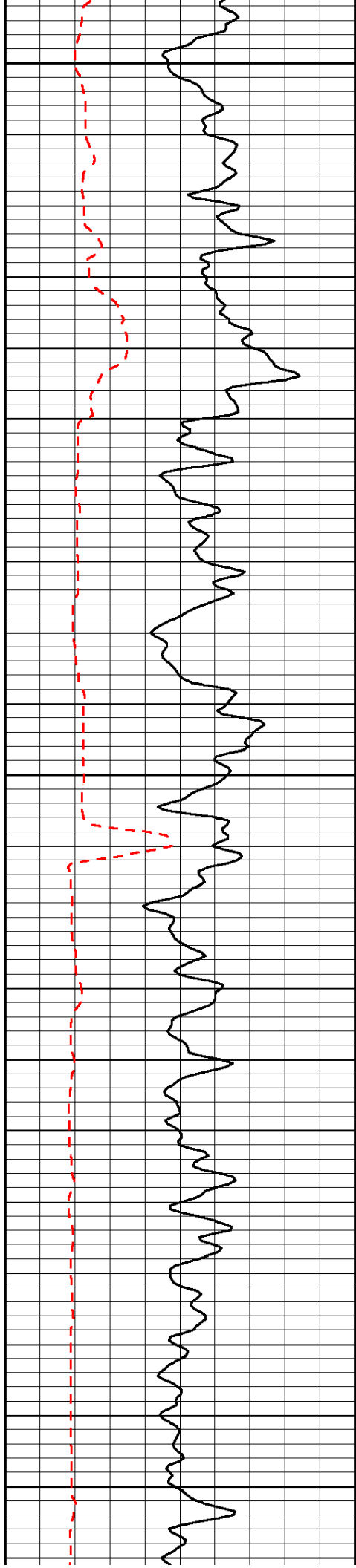


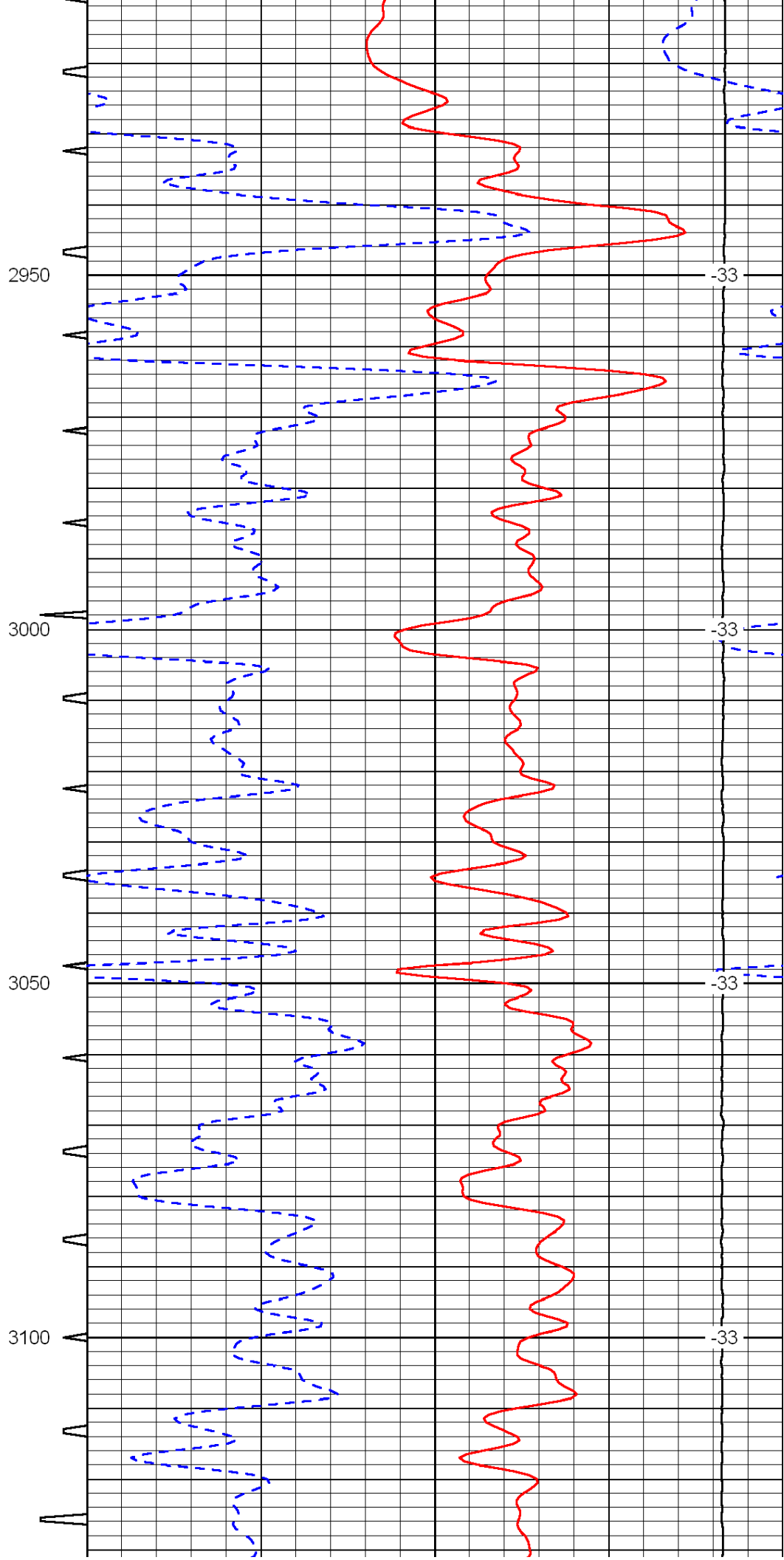
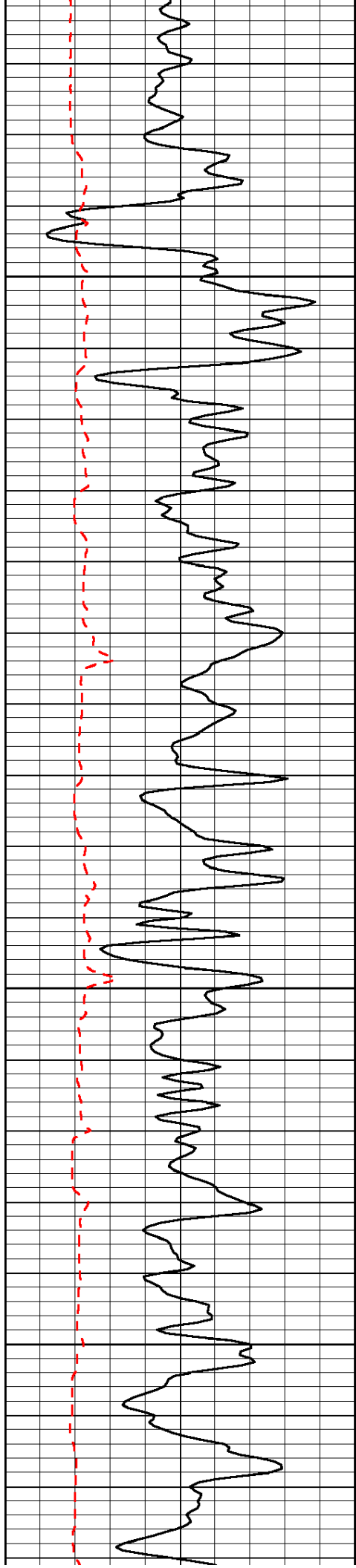


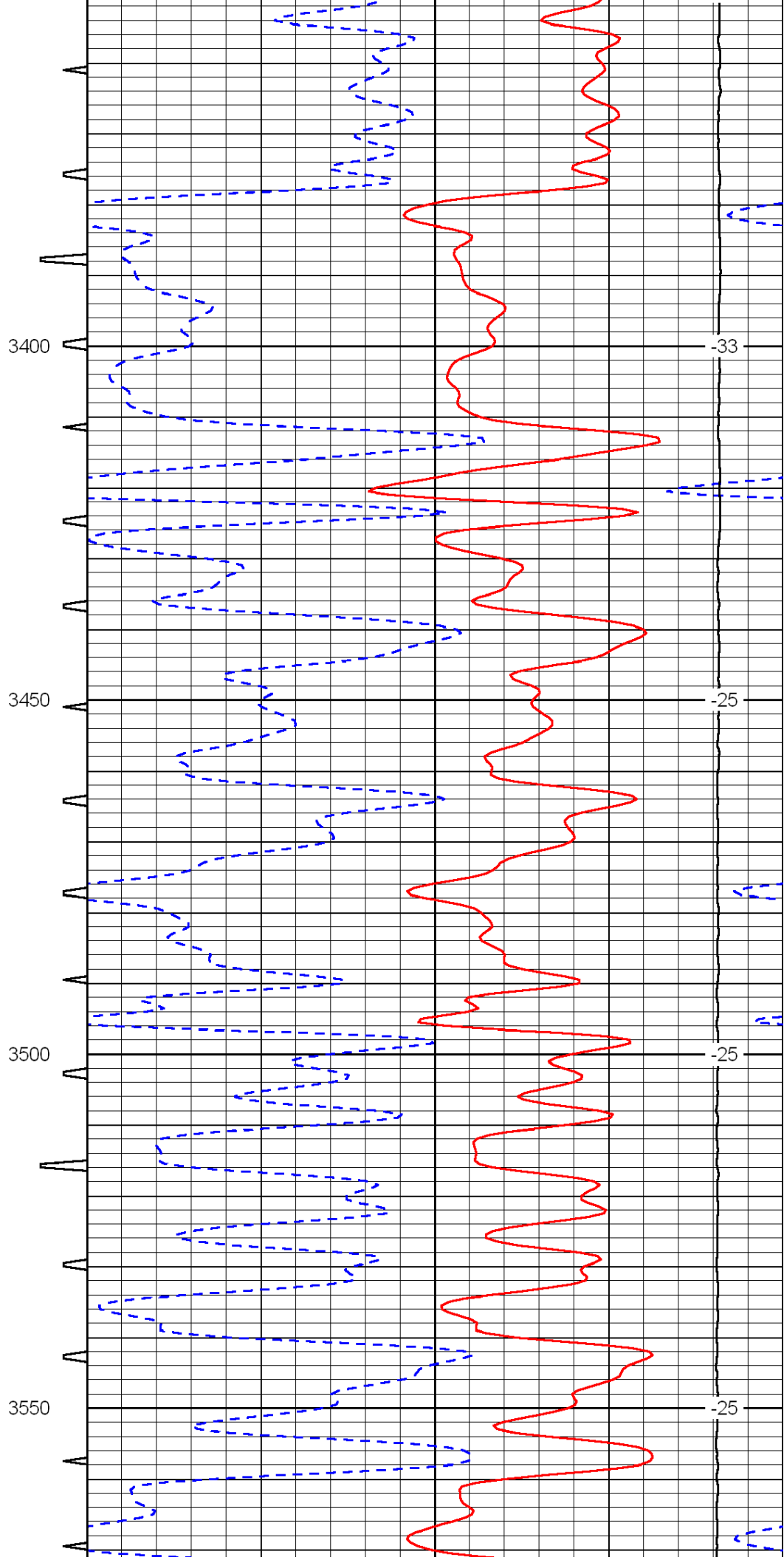
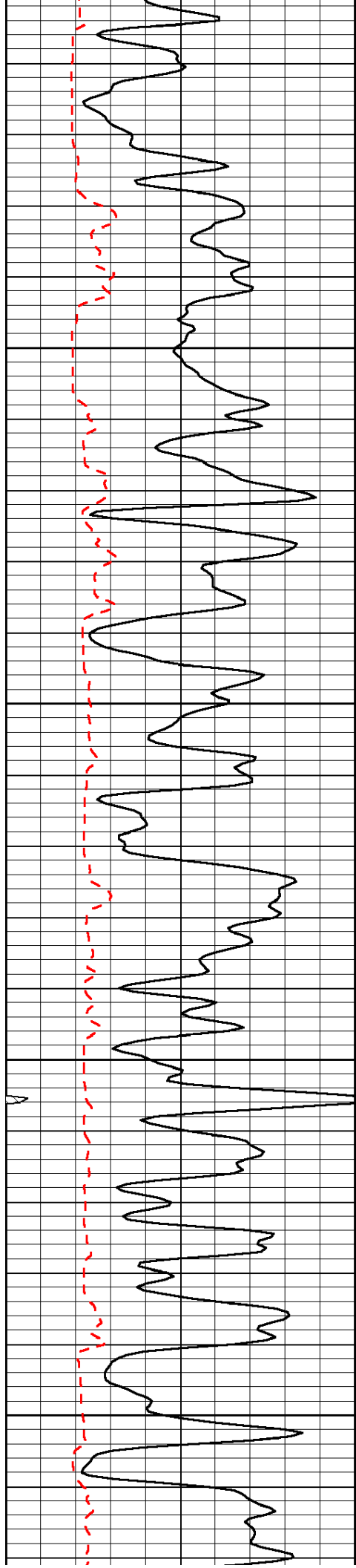


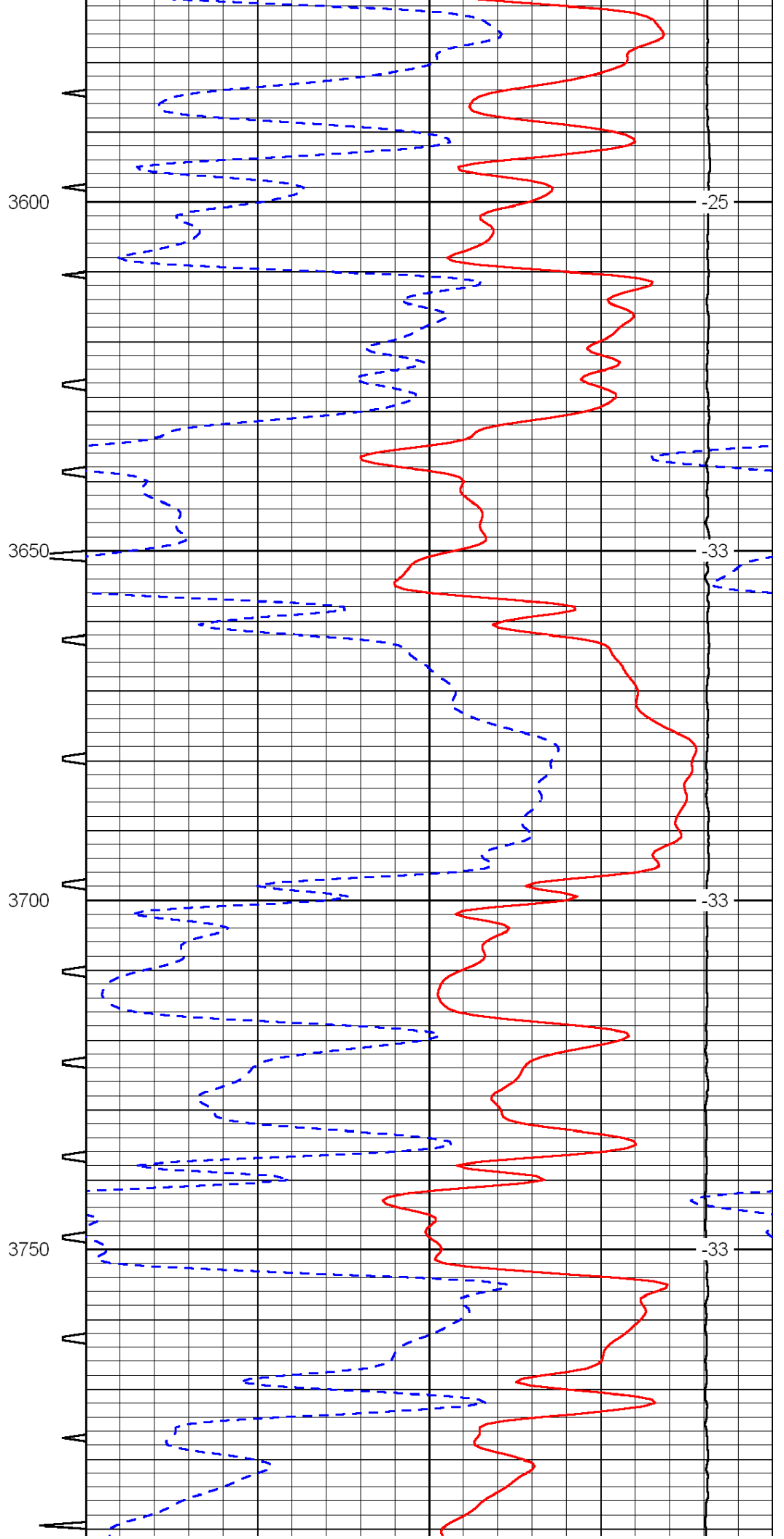
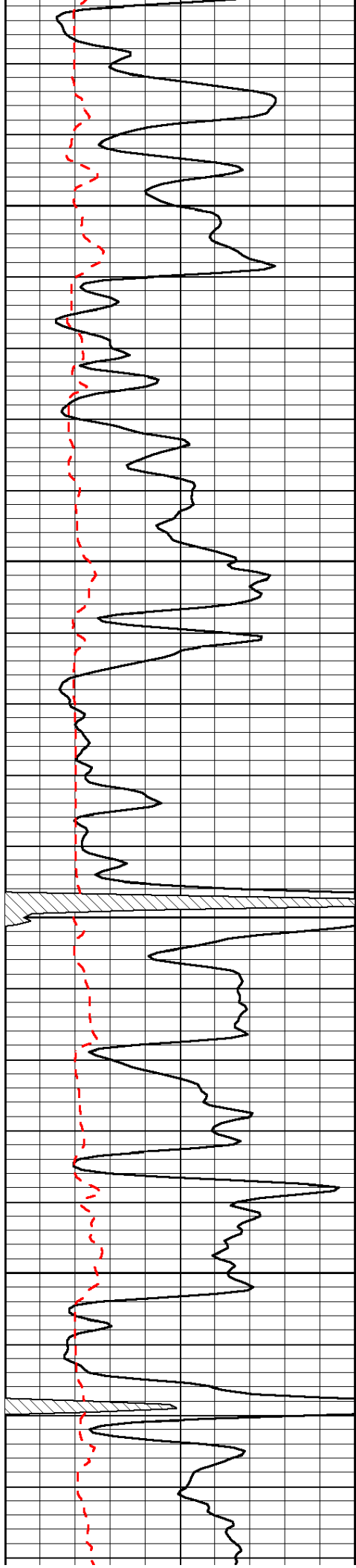


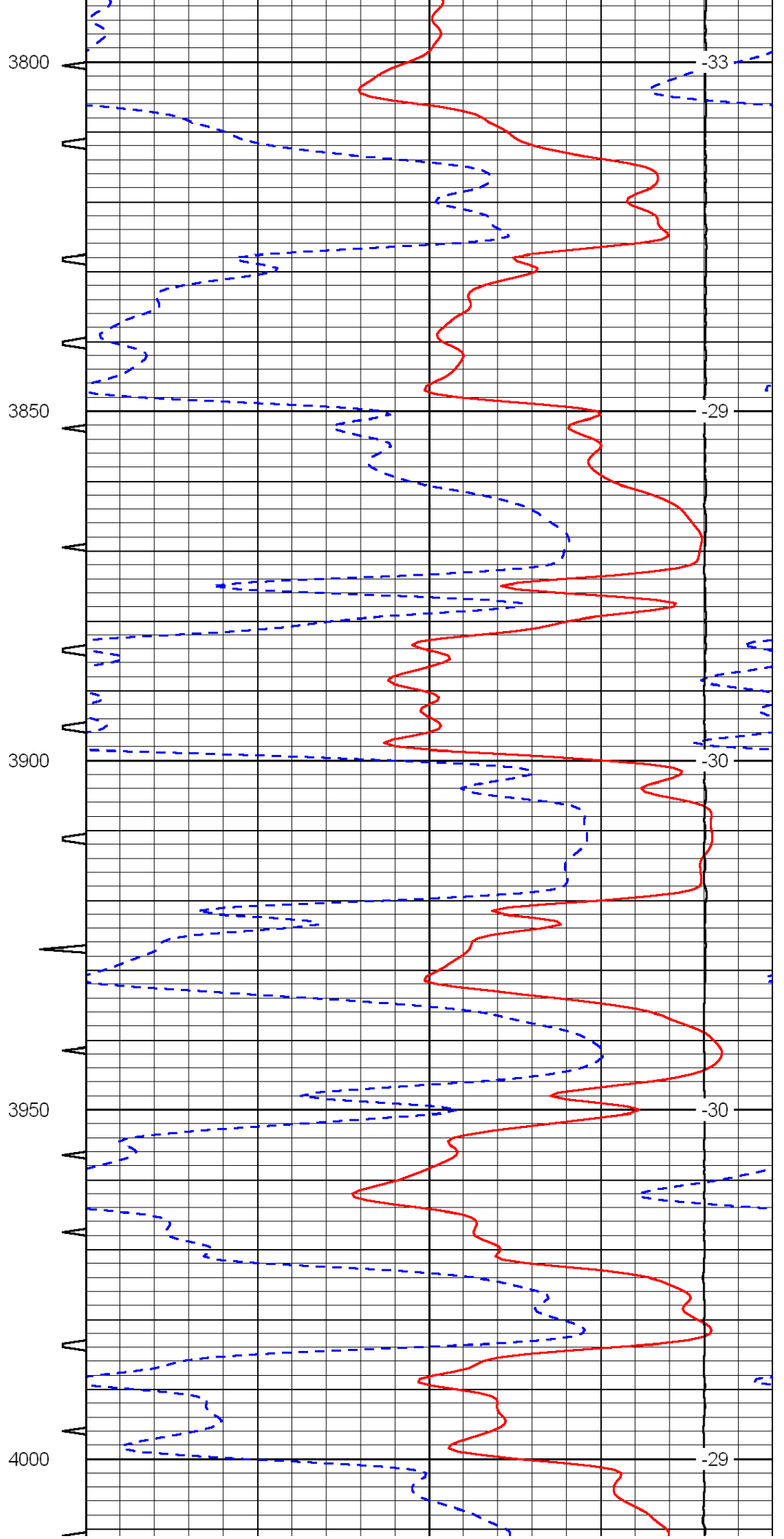
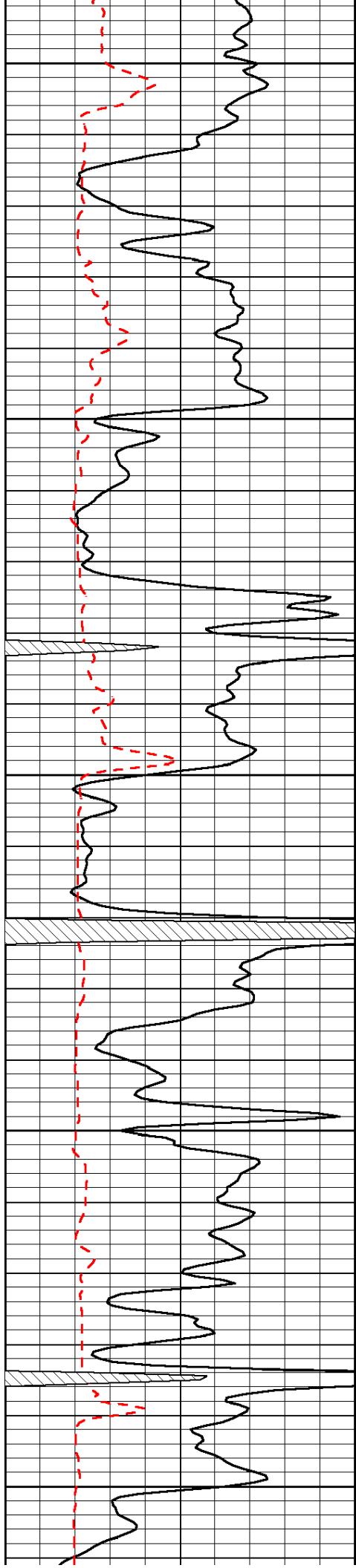


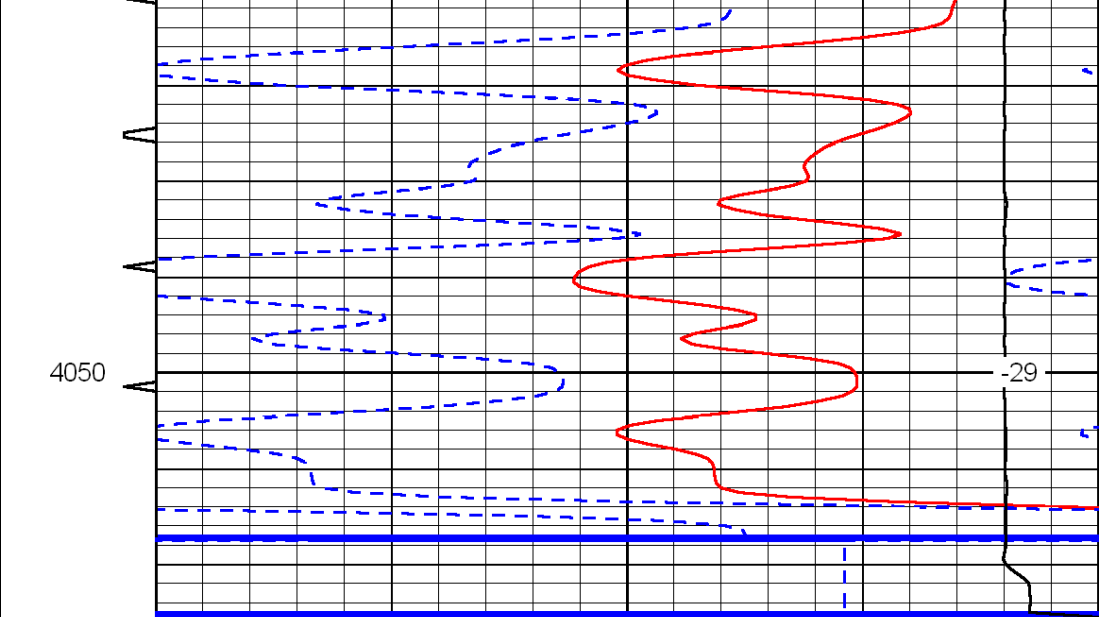
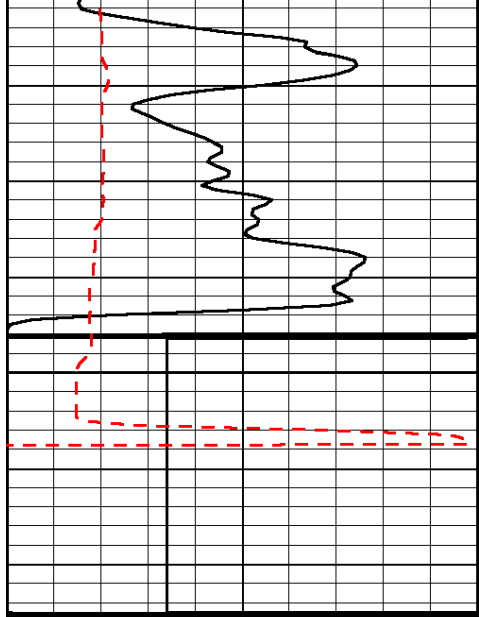












0	Gamma Ray	150	Sonic Int	140	Delta Time (usec/ft)	40
150	Gamma Ray	300	5	0	SPOR	-10
6	Caliper (GAPI)	16		15000	LTEN (lb)	0
LSPD						