



Dual Induction Log

DIGITAL LOG (785) 625-3858

API No.	15-039-21,117-00-00	
Company	Cholla Production, LLC	
Well	May-Jording No. 1-23	
Field	Jording	
County	Decatur	State Kansas
Location	W2 E2 NW NW 660' FNL & 760' FWL	
Sec: 23	Twp: 2S	Rge: 30W
Other Services	CNL/CDL MEL/BHCS	

Permanent Datum	Ground Level	Elevation 2830
Log Measured From	Kelly Bushing	5 Ft. Above Perm. Datum
Drilling Measured From	Kelly Bushing	
Date	6/6/2010	
Run Number	One	
Depth Driller	4070	
Depth Logger	4070	
Bottom Logged Interval	4069	
Top Log Interval	300	
Casing Driller	8.625 @ 303	
Casing Logger	301	
Bit Size	7.875	
Type Fluid in Hole	Chemical	
Salinity, ppm CL	1300	
Density / Viscosity	9.1	63
pH / Fluid Loss	10.0	8.0
Source of Sample	Flowline	
Rm @ Meas. Temp	1.30 @ 80	
Rmf @ Meas. Temp	.98 @ 80	
Rmc @ Meas. Temp	1.76 @ 80	
Source of Rmf / Rmc	Charts	
Rm @ BHT	.85 @ 119	
Operating Rig Time	4 Hours	
Max Rec. Temp. F	119	
Equipment Number	10	
Location	Hays	
Recorded By	J. Long	
Witnessed By	Bill Goff	

<<< Fold Here >>>

All interpretations are opinions based on inferences from electrical or other measurements and we cannot and do not guarantee the accuracy or correctness of any interpretation, and we shall not, except in the case of gross or willful negligence on our part, be liable or responsible for any loss, costs, damages, or expenses incurred or sustained by anyone resulting from any interpretation made by any of our officers, agents or employees. These interpretations are also subject to our general terms and conditions set out in our current Price Schedule.

Comments

Thank you for using Log-Tech, Inc.
(785) 625-3858

Oberlin, 7 West to 7 Rd, 1 North to T, 1/2 West, 2 North, 1/2 East, South Into

Database File: c:\warrior\data\cholla_may-jording no. 1-23\cholla hd.db
 Dataset Pathname: dil\cholstck
 Presentation Format: dil2in
 Dataset Creation: Sun Jun 06 19:07:05 2010
 Charted by: Depth in Feet scaled 1:600

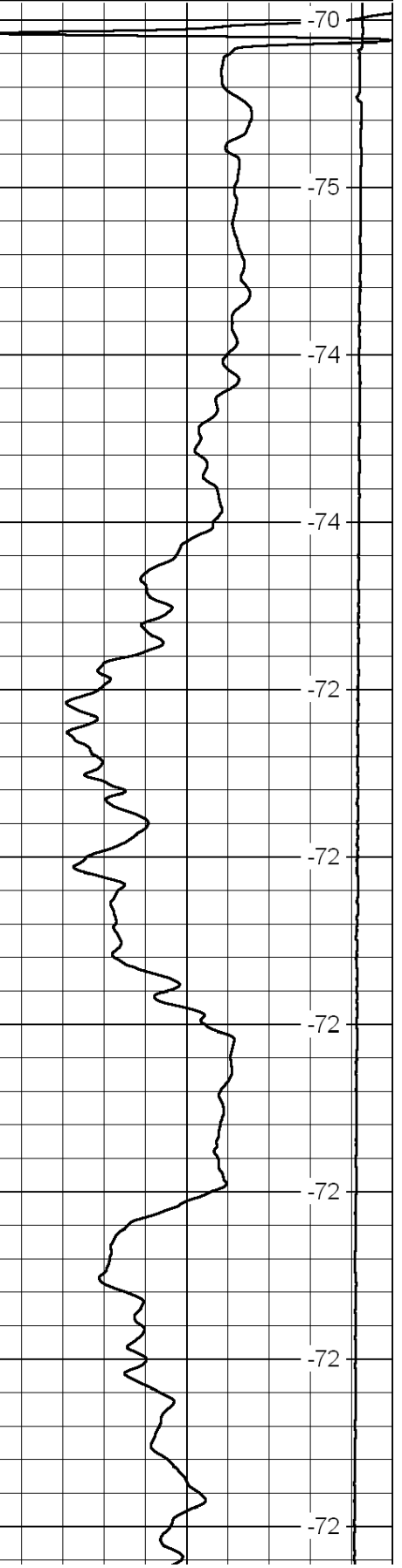
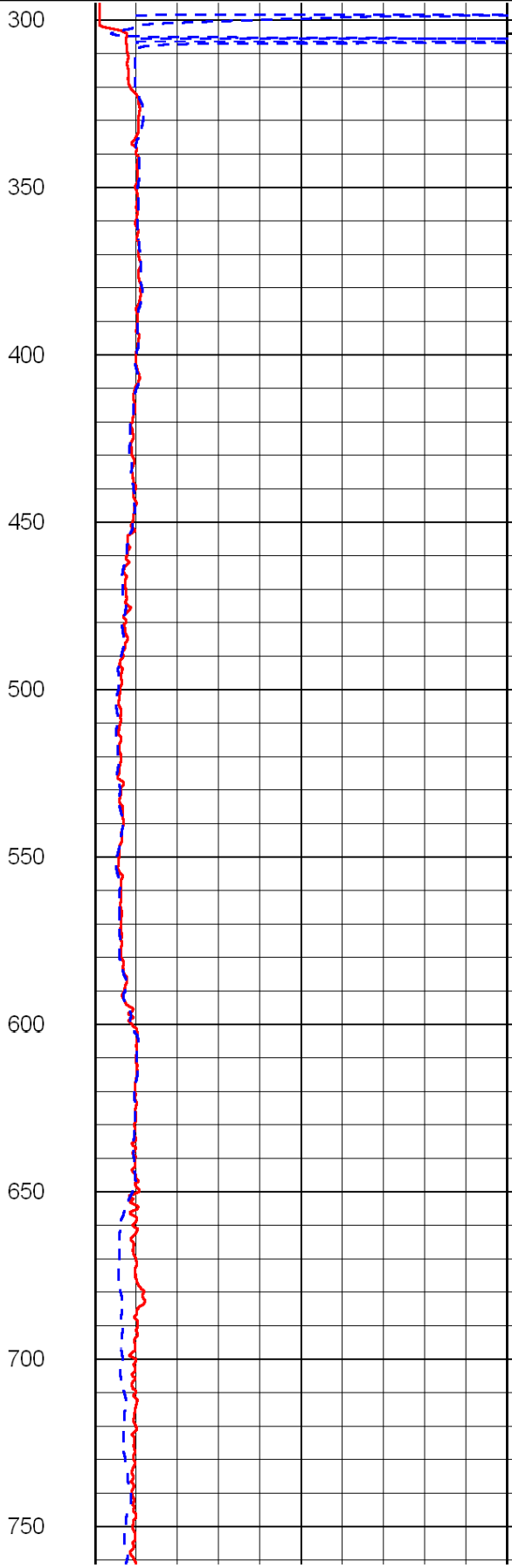
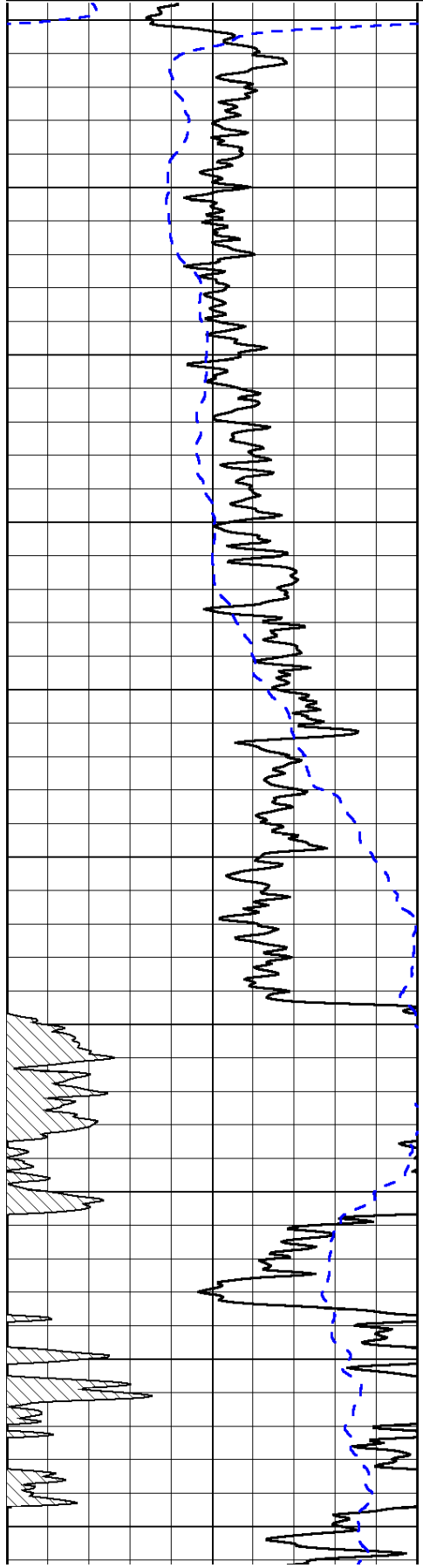
0	Gamma Ray	150
-200	SP (mV)	0

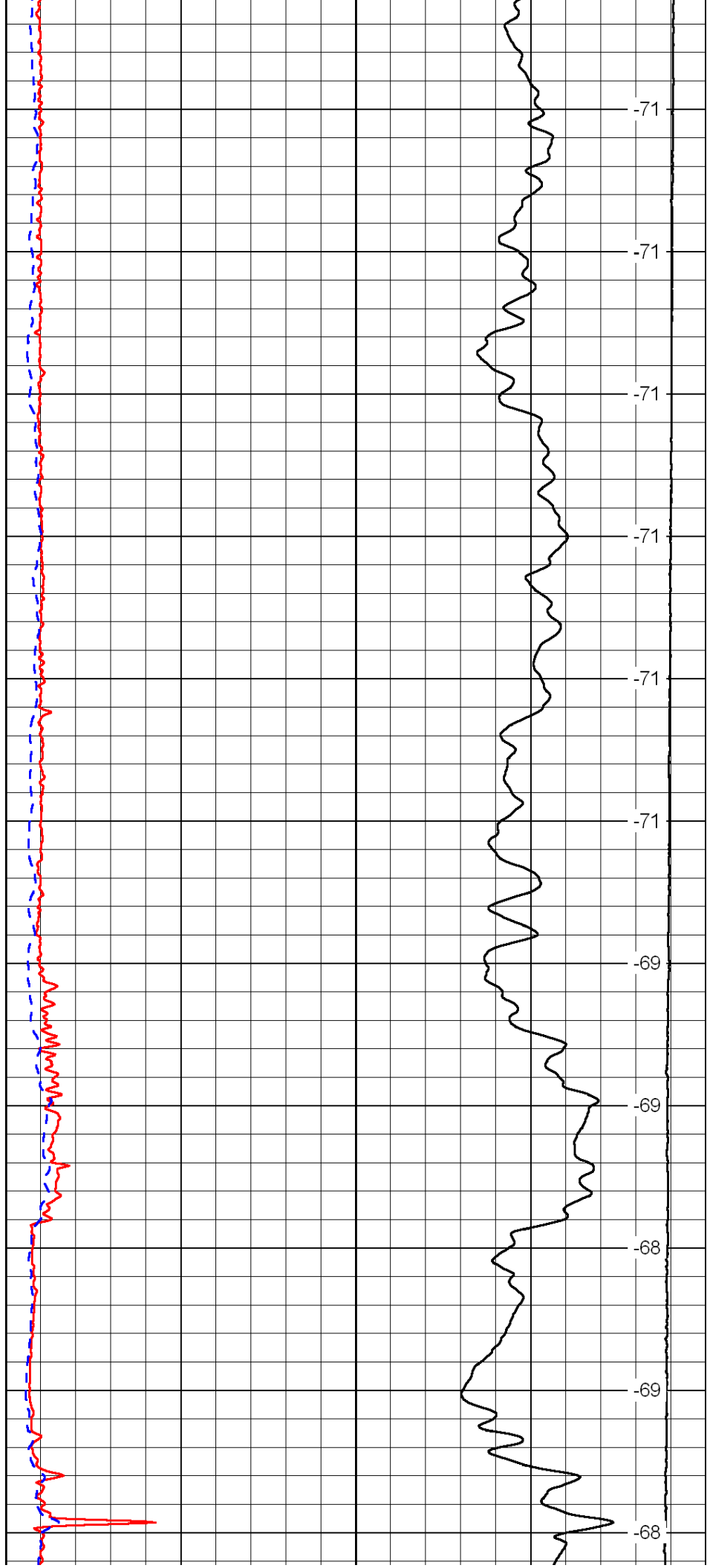
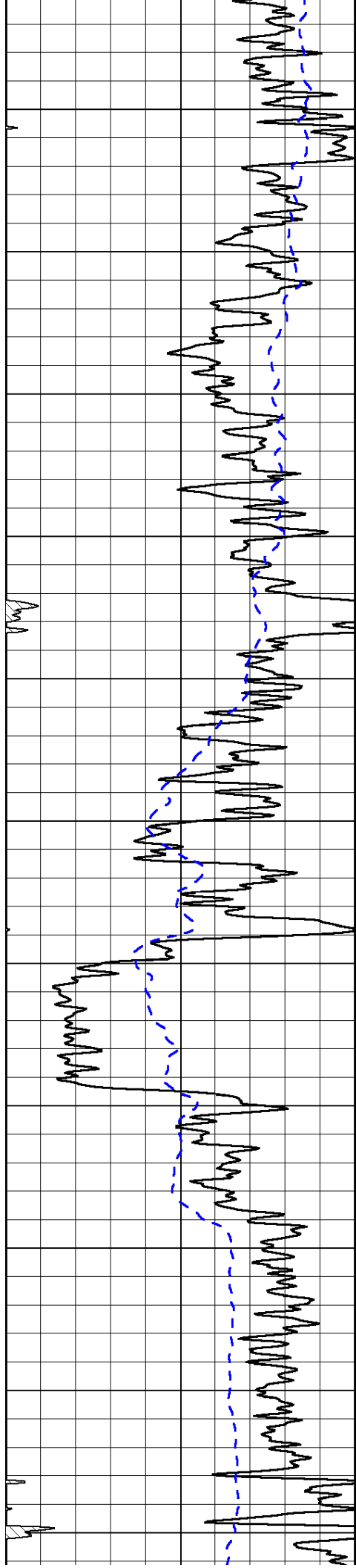
0	Shallow Resistivity	50
0	Deep Resistivity	50

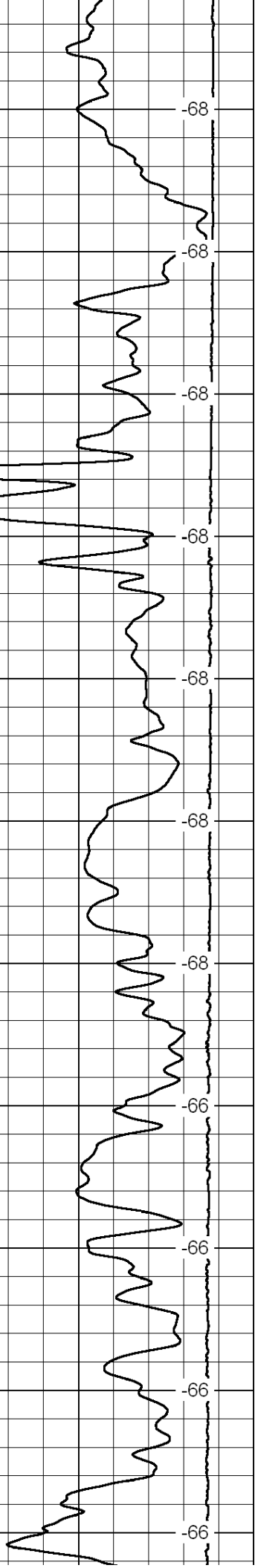
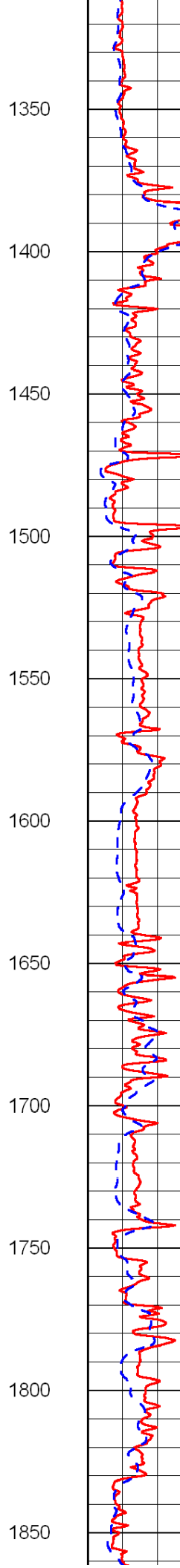
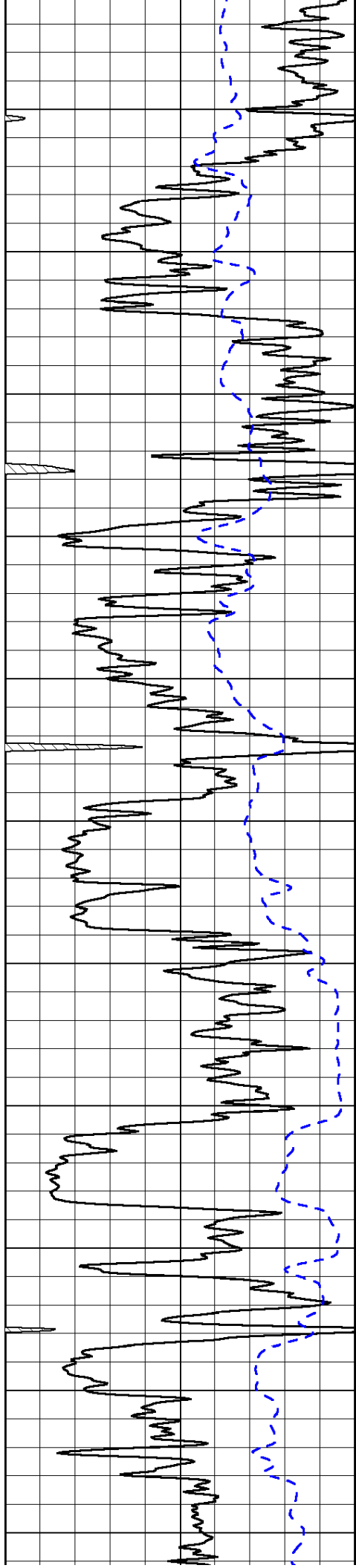
LSPD

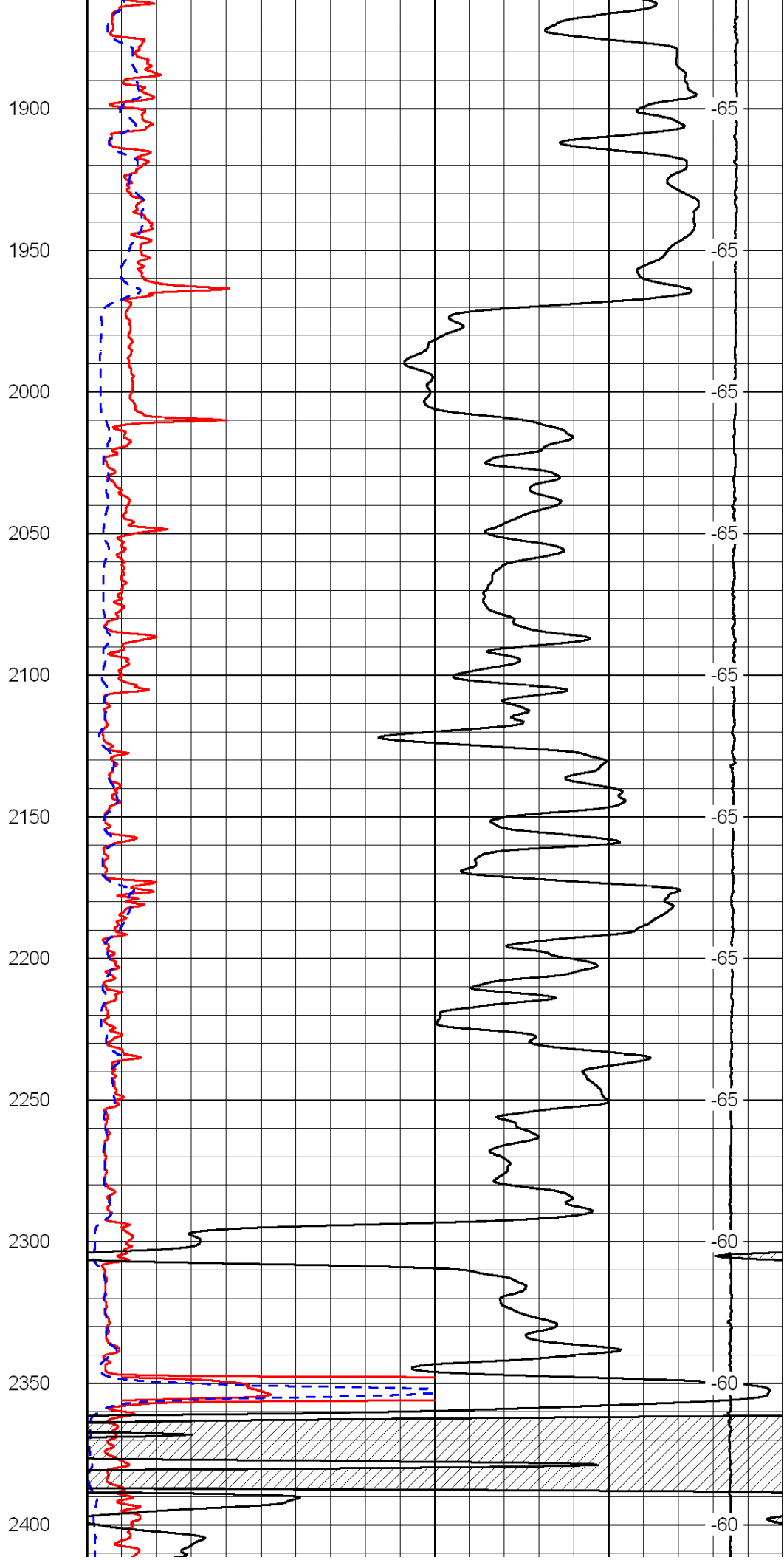
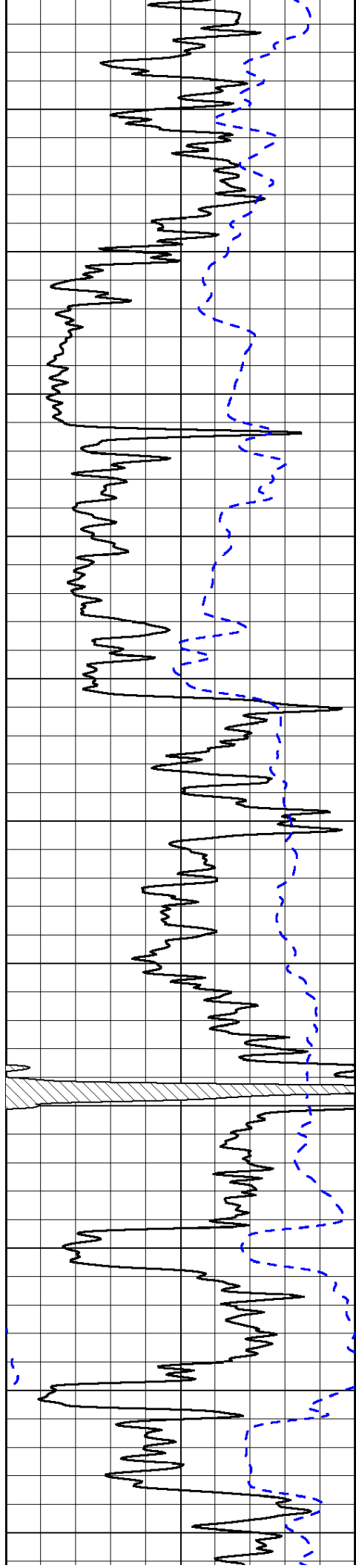
1000	Conductivity	0
15000	Line Tension	0

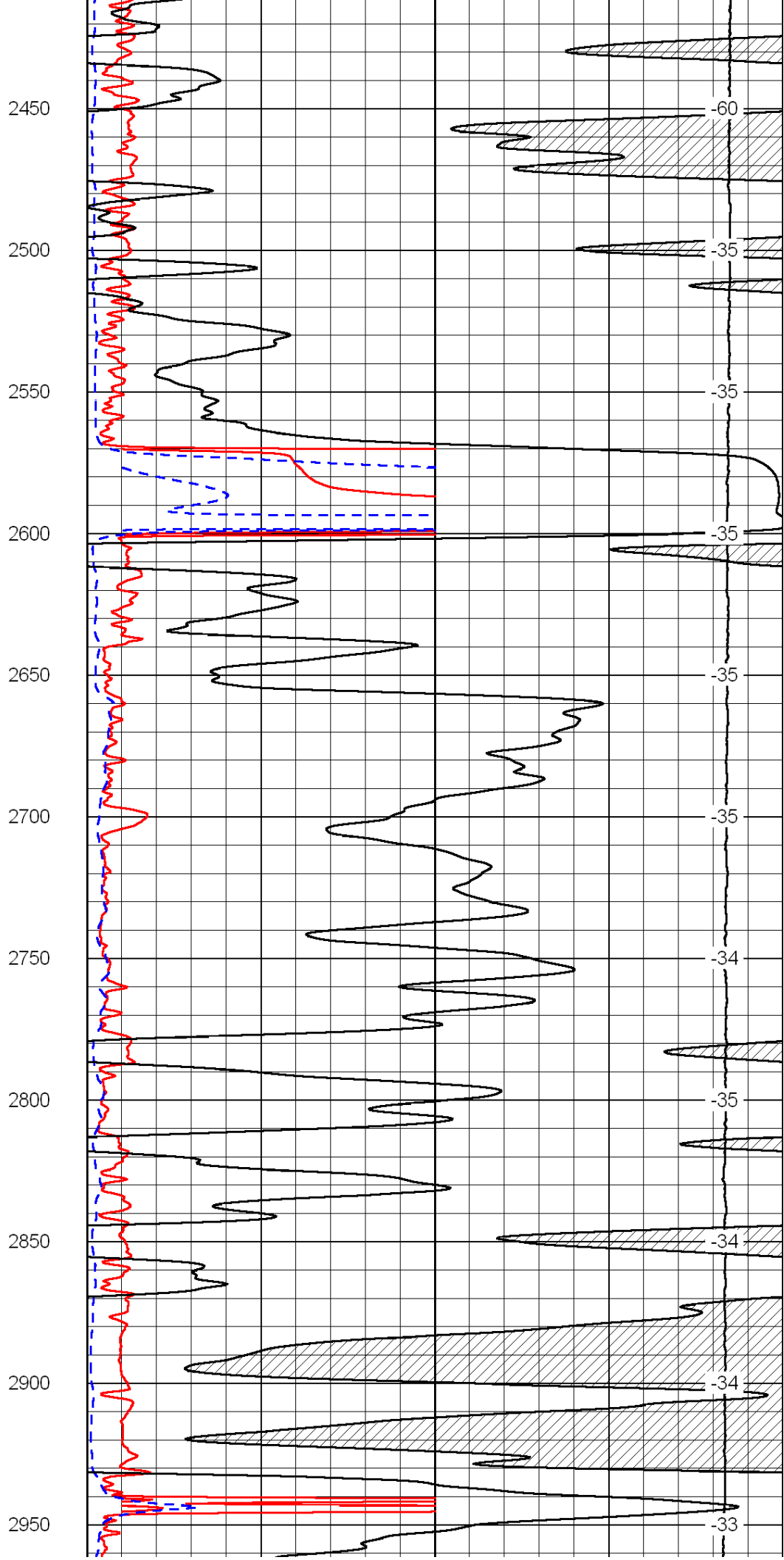
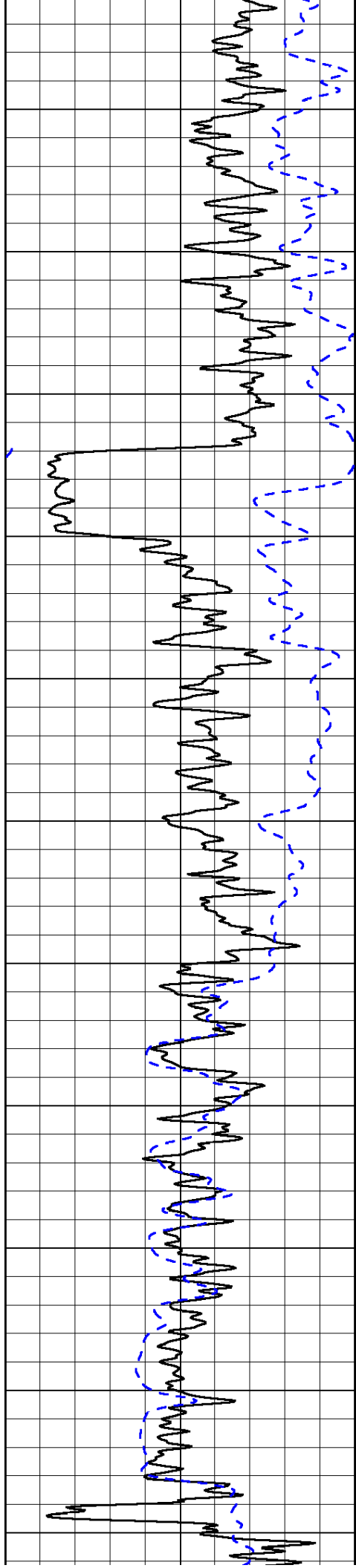
50	Shallow Resistivity	500
50	Deep Resistivity	500

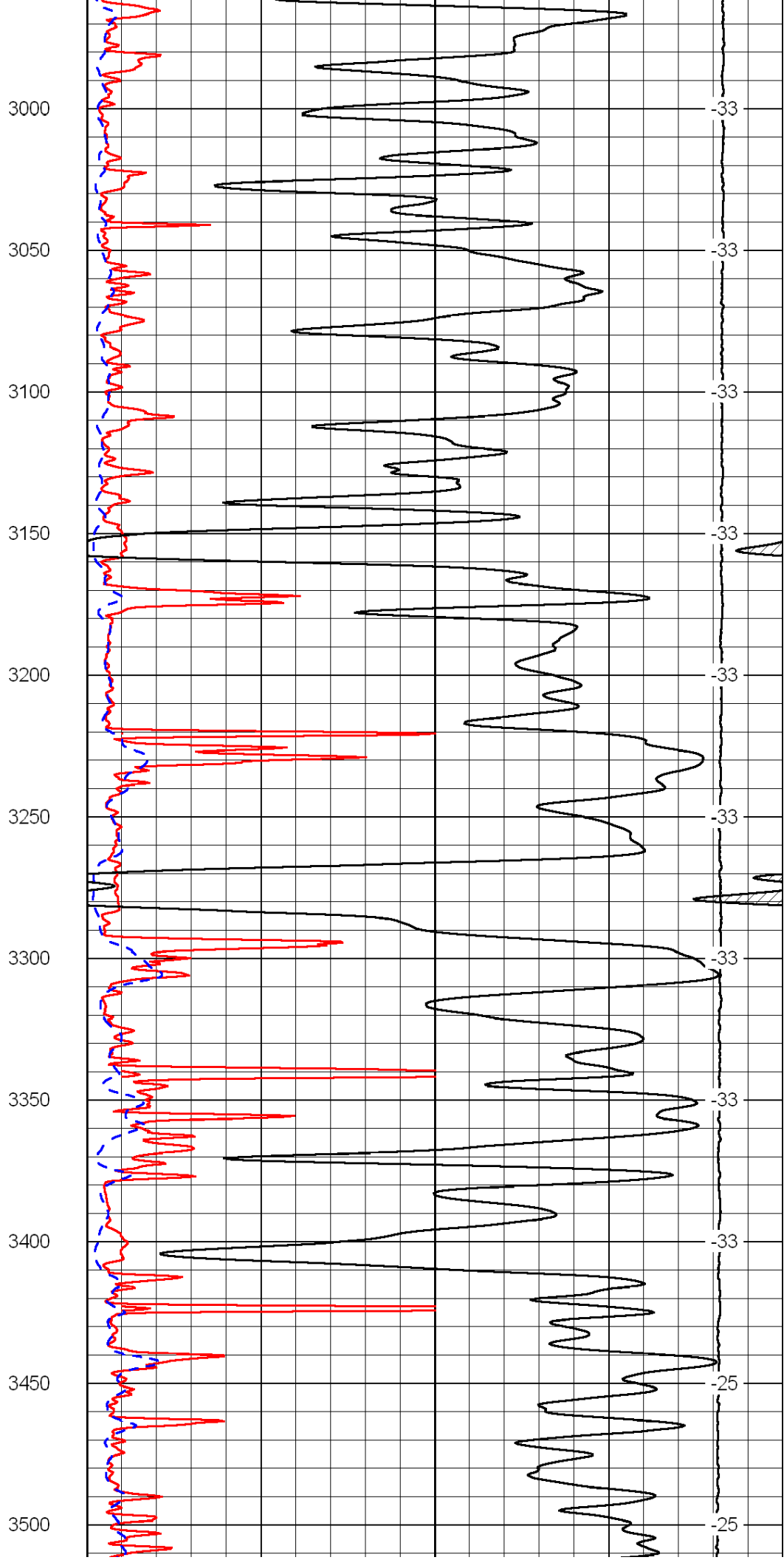
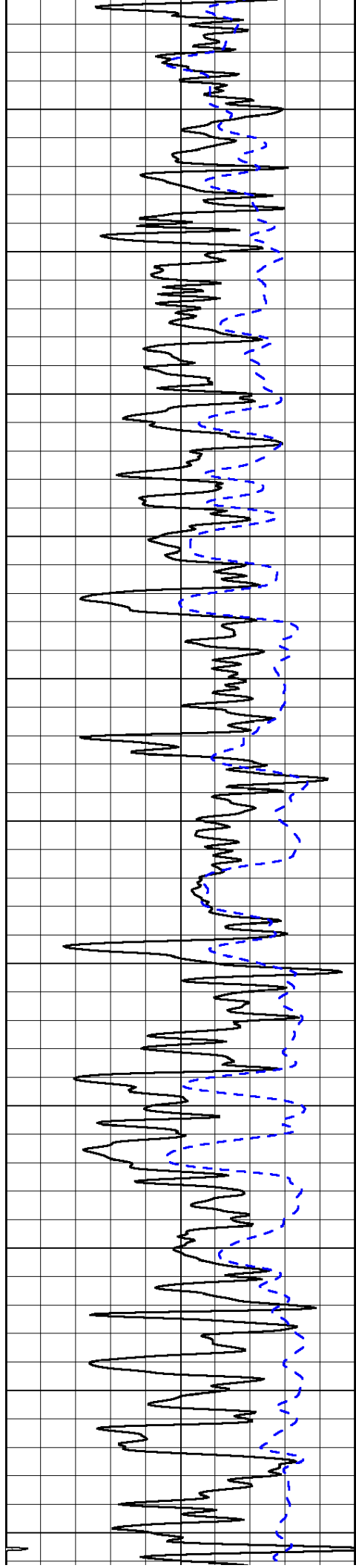


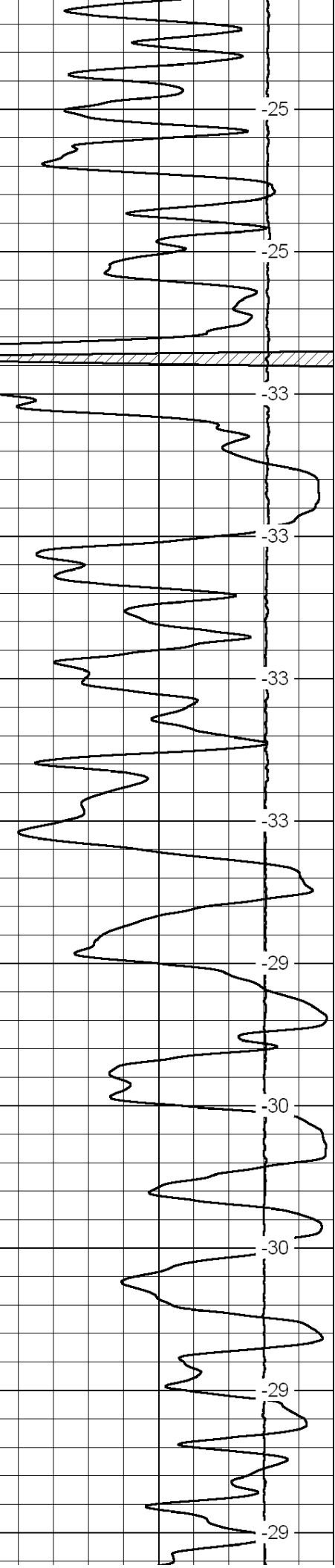
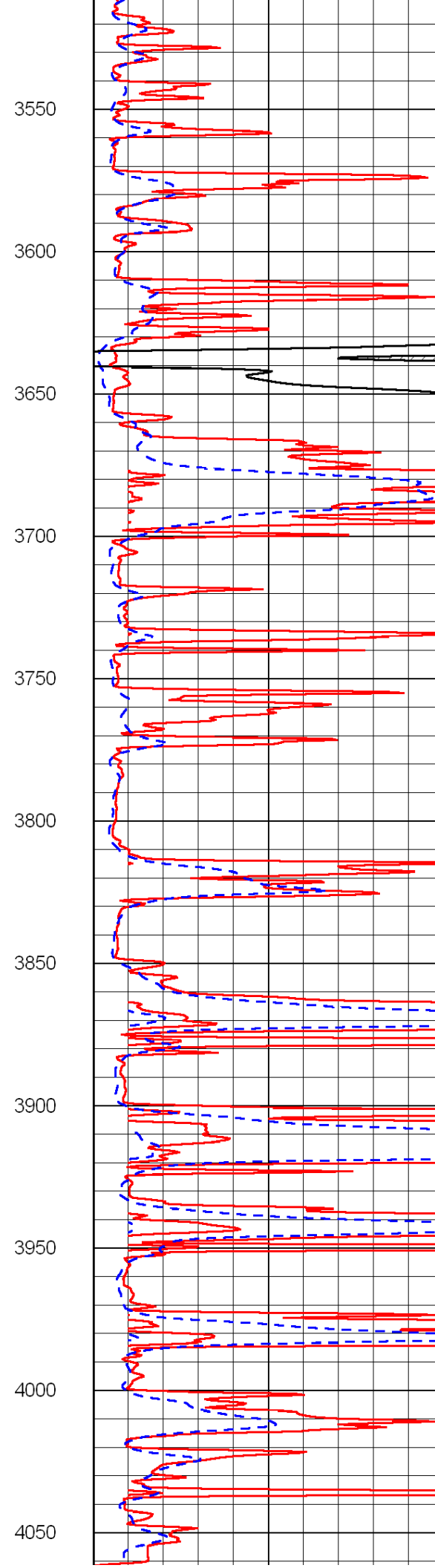
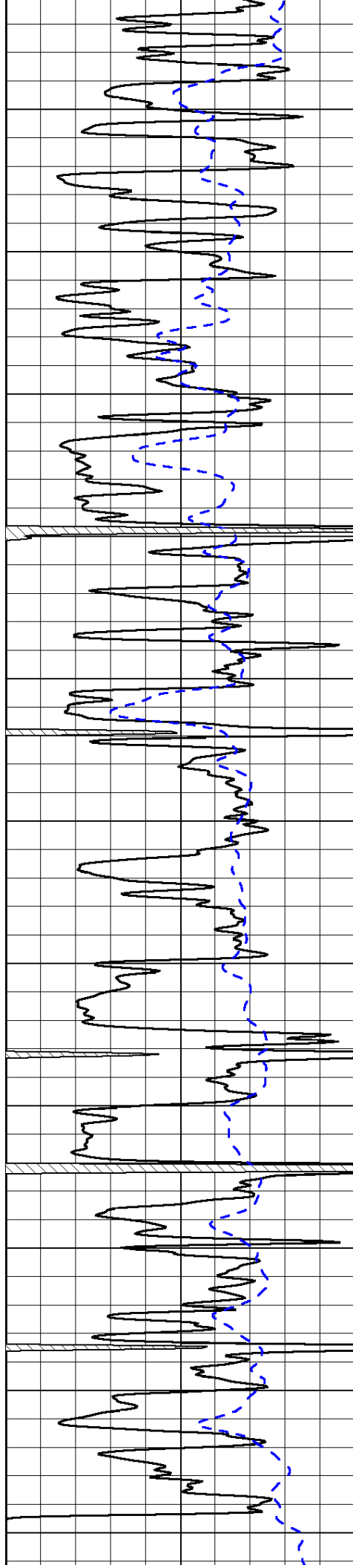


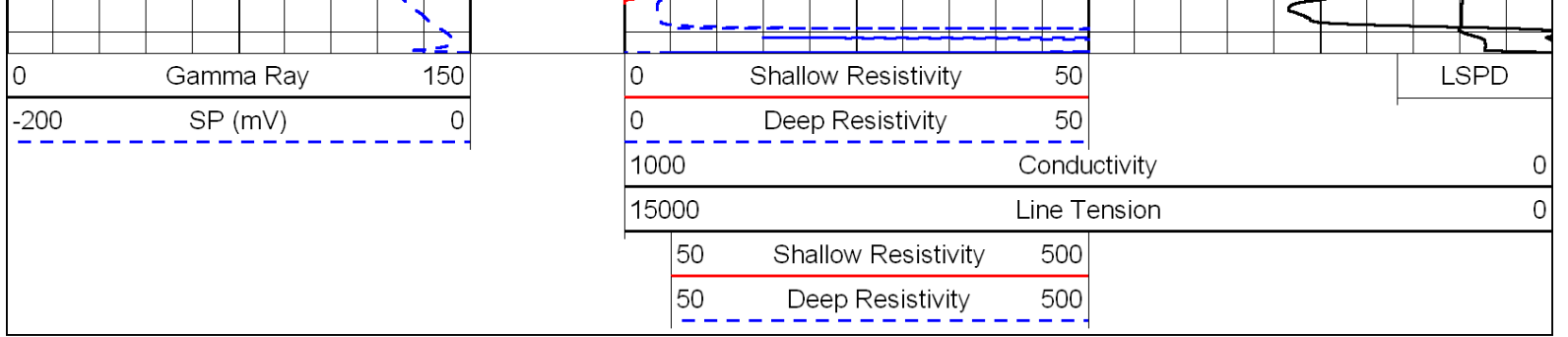




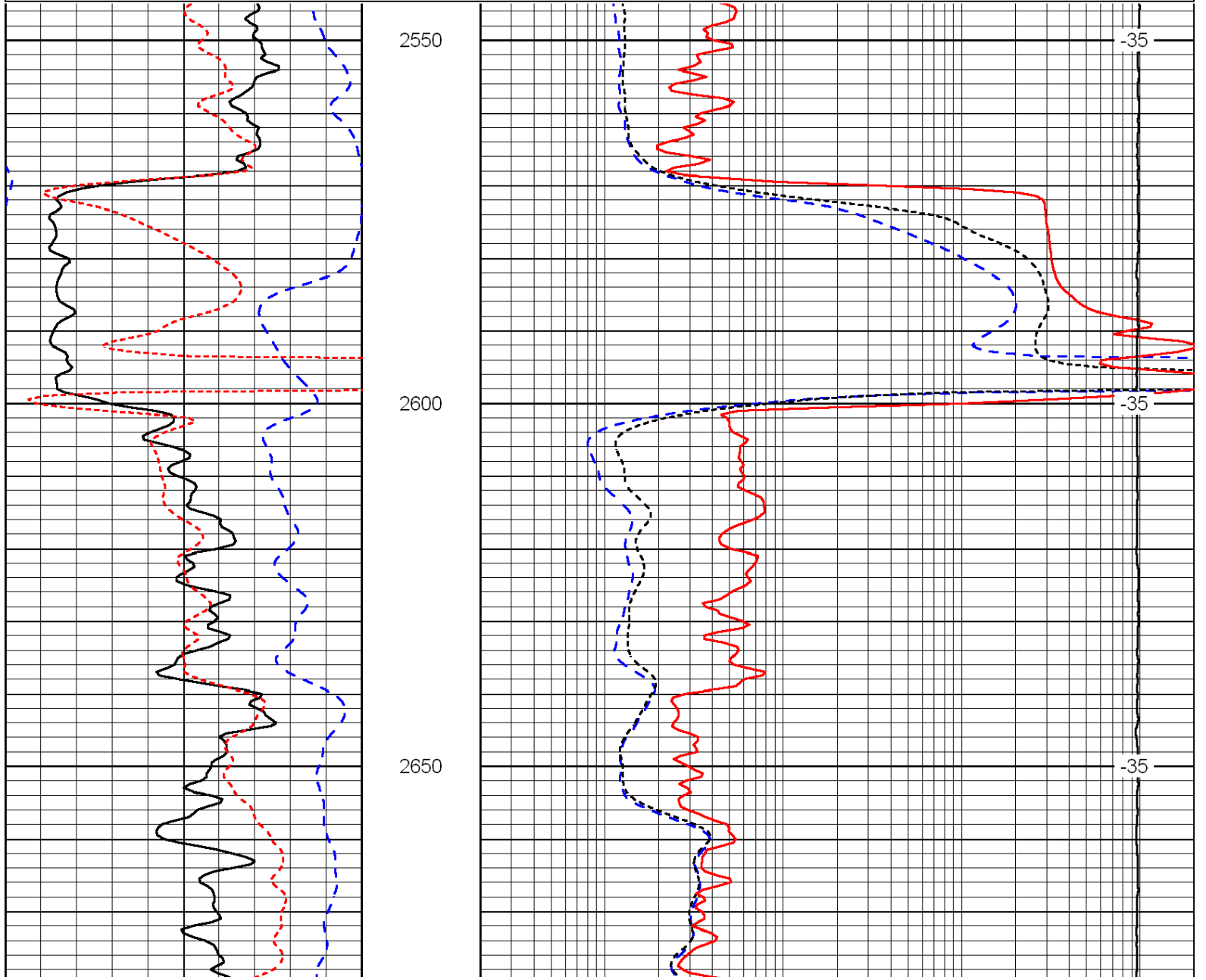
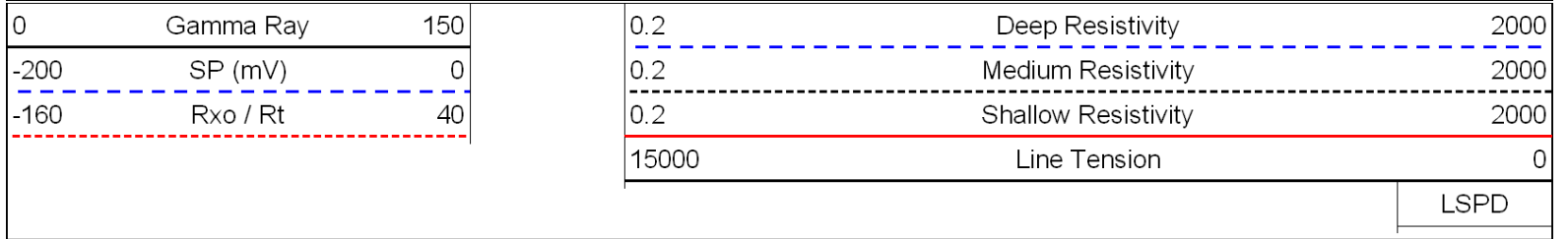


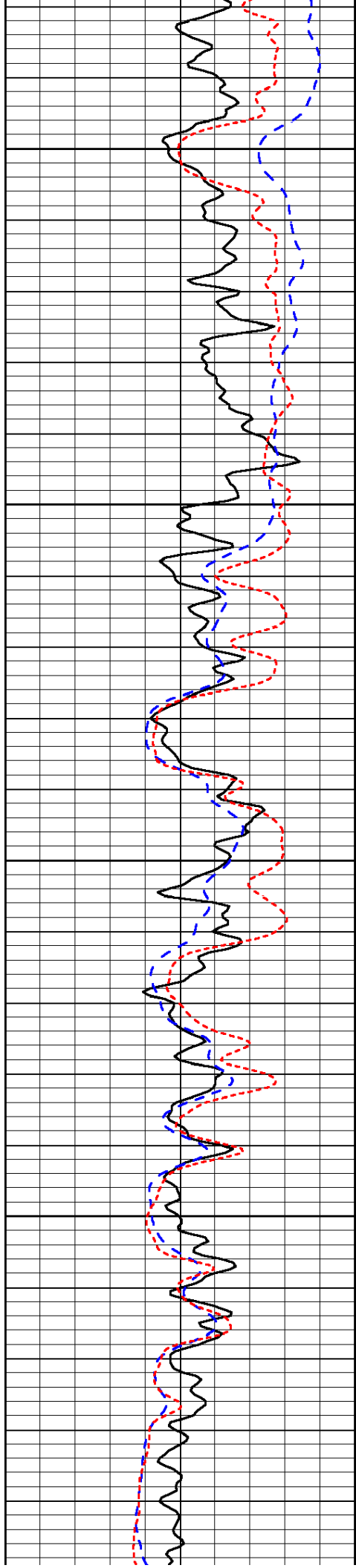






Database File: c:\warrior\data\cholla_may-jording no. 1-23\chollahd.db
 Dataset Pathname: dil/cholstck
 Presentation Format: dil
 Dataset Creation: Sun Jun 06 19:07:05 2010
 Charted by: Depth in Feet scaled 1:240



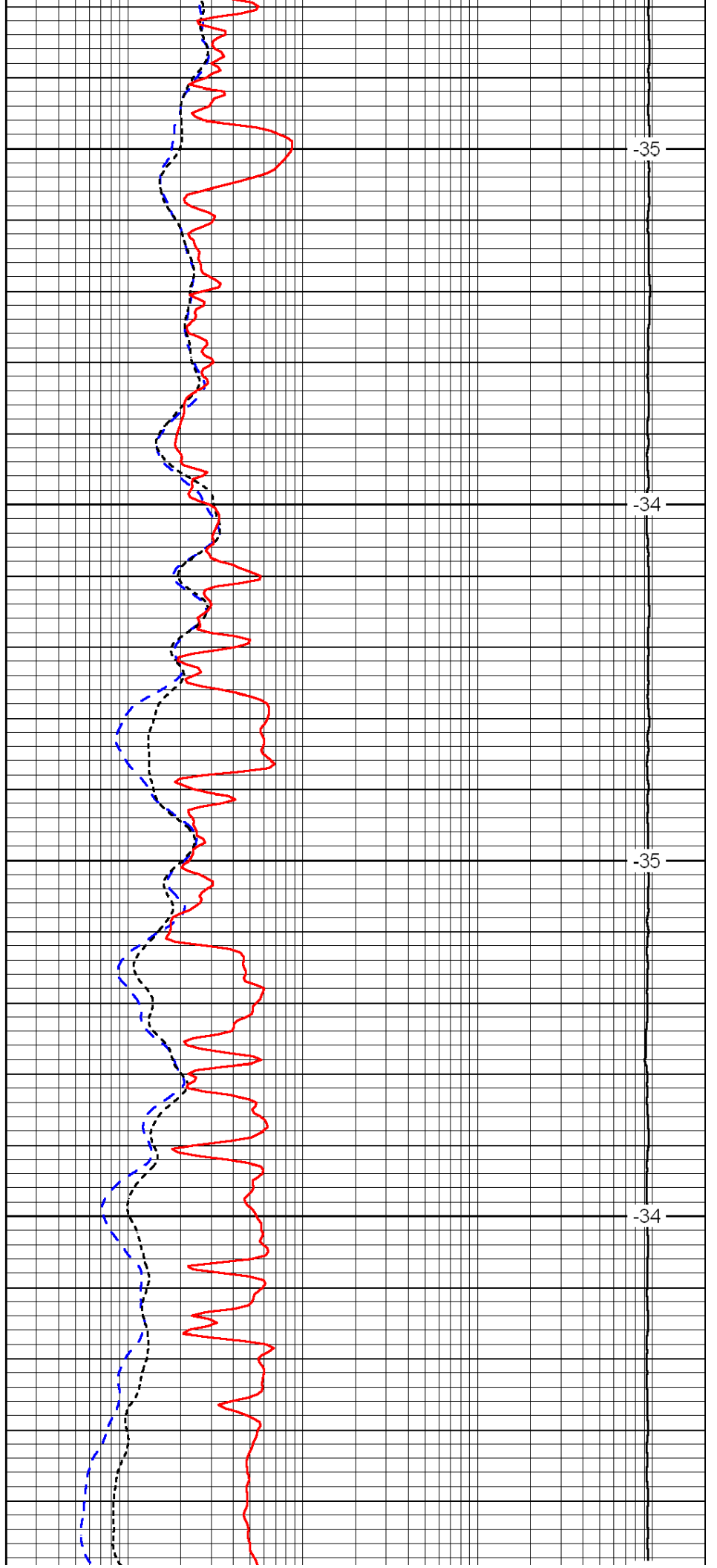


2700

2750

2800

2850

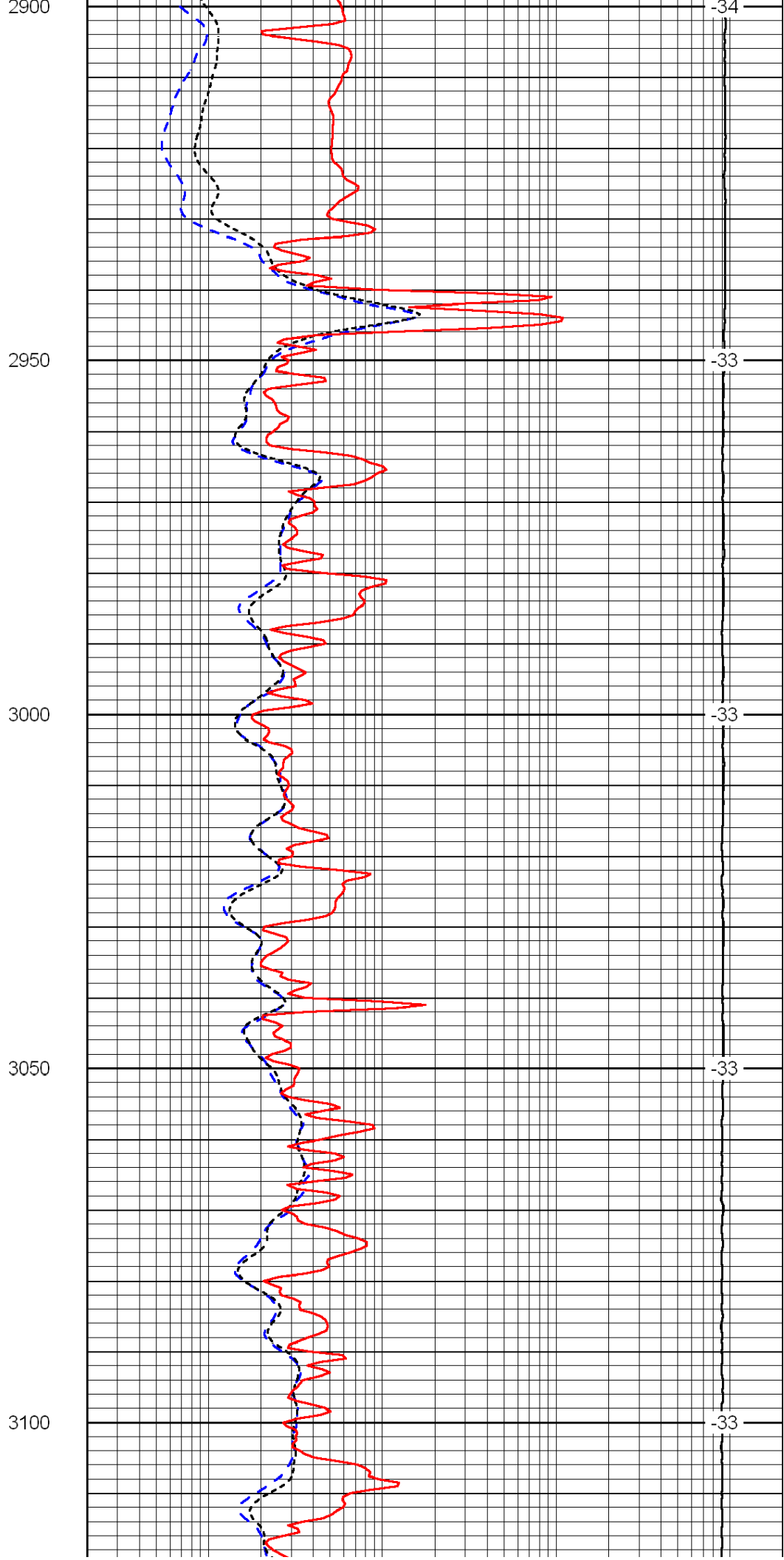
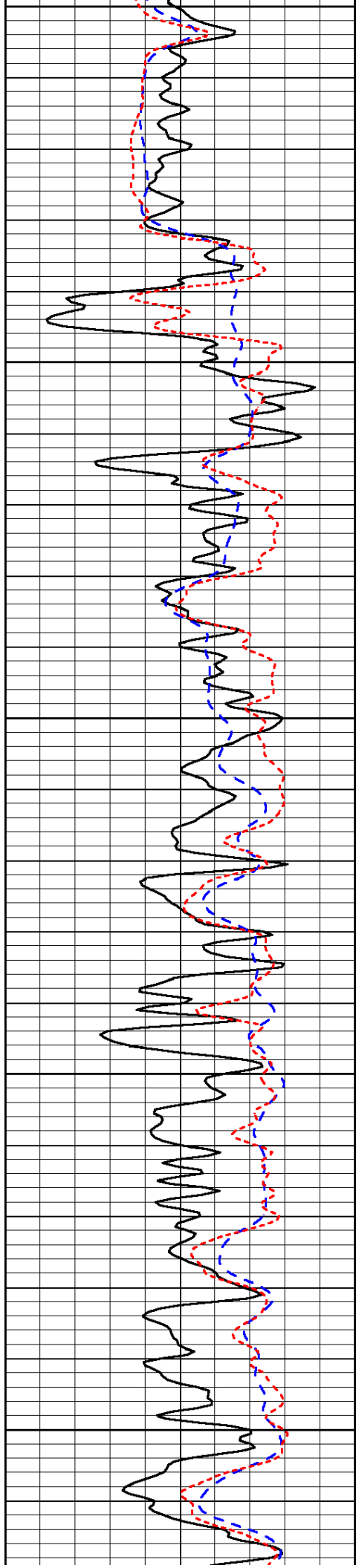


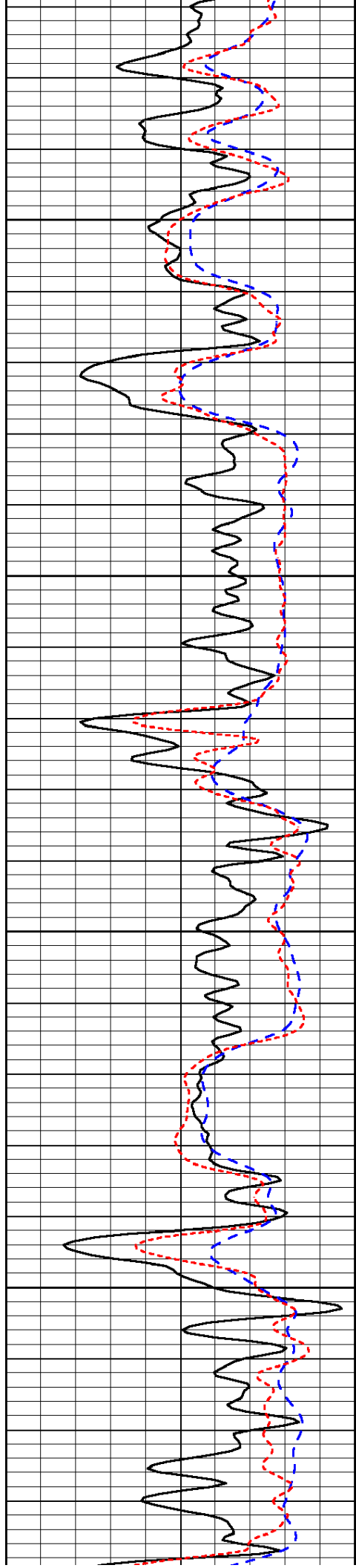
-35

-34

-35

-34



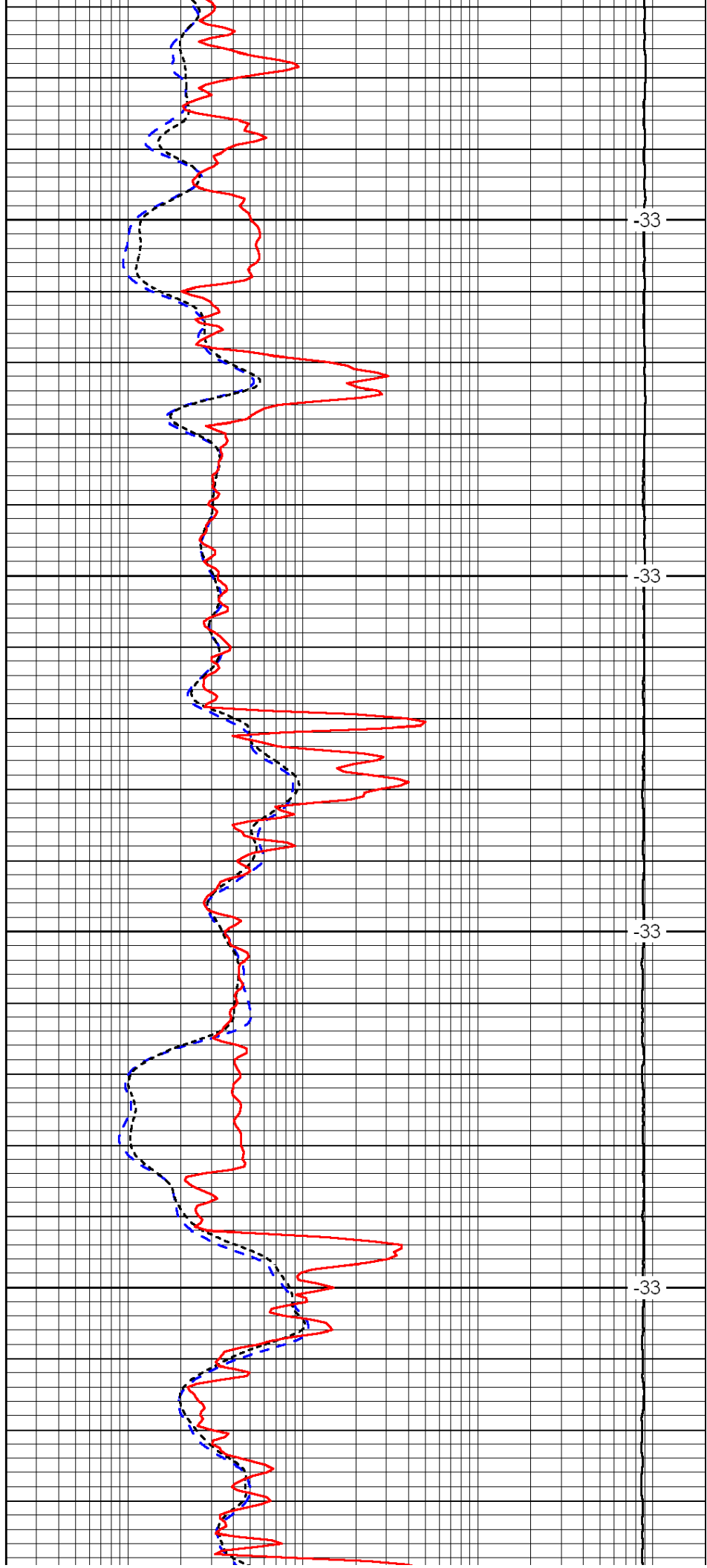


3150

3200

3250

3300

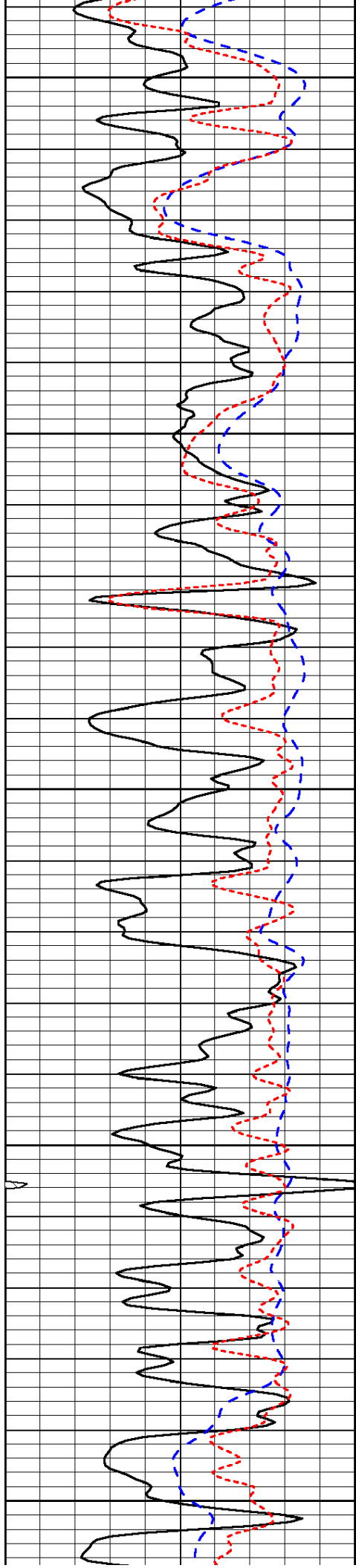


-33

-33

-33

-33



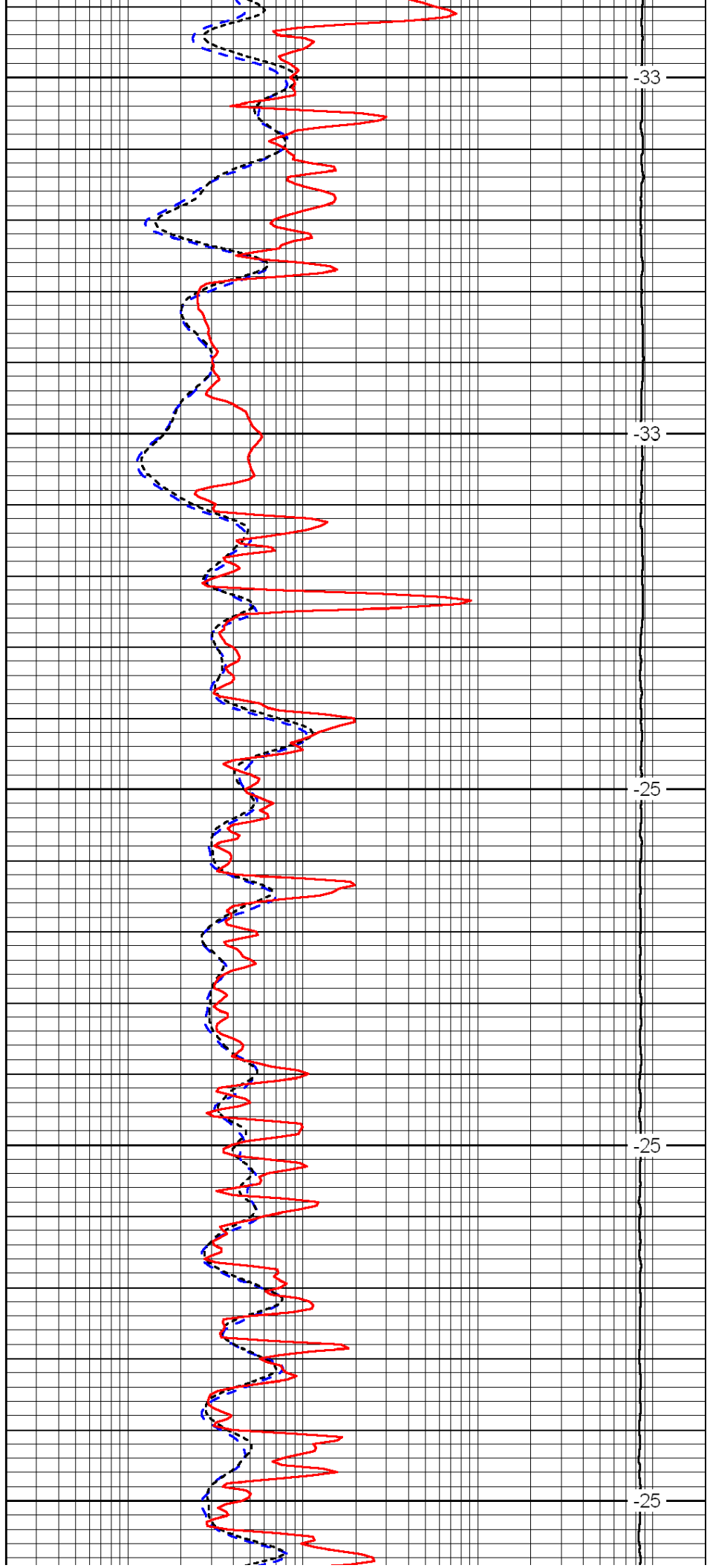
3350

3400

3450

3500

3550



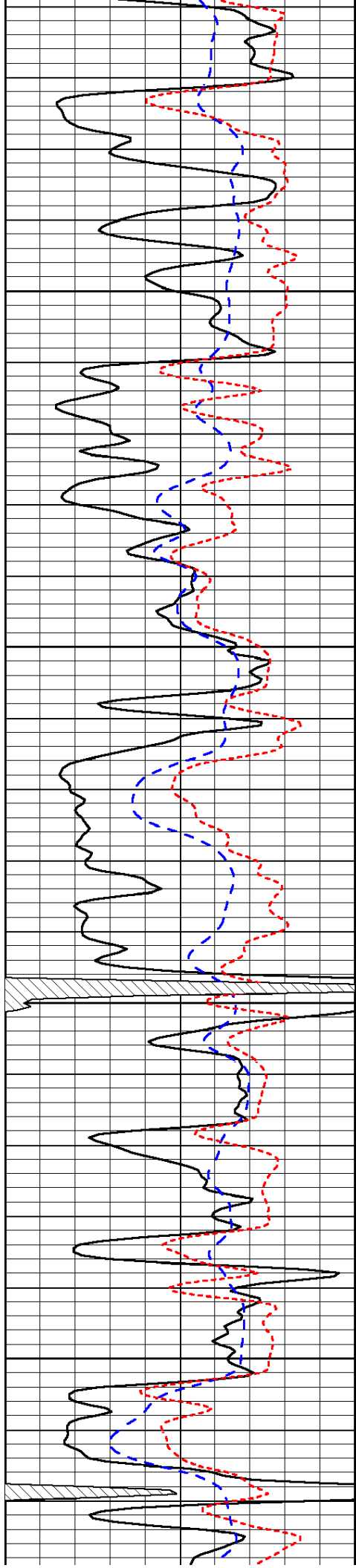
-33

-33

-25

-25

-25

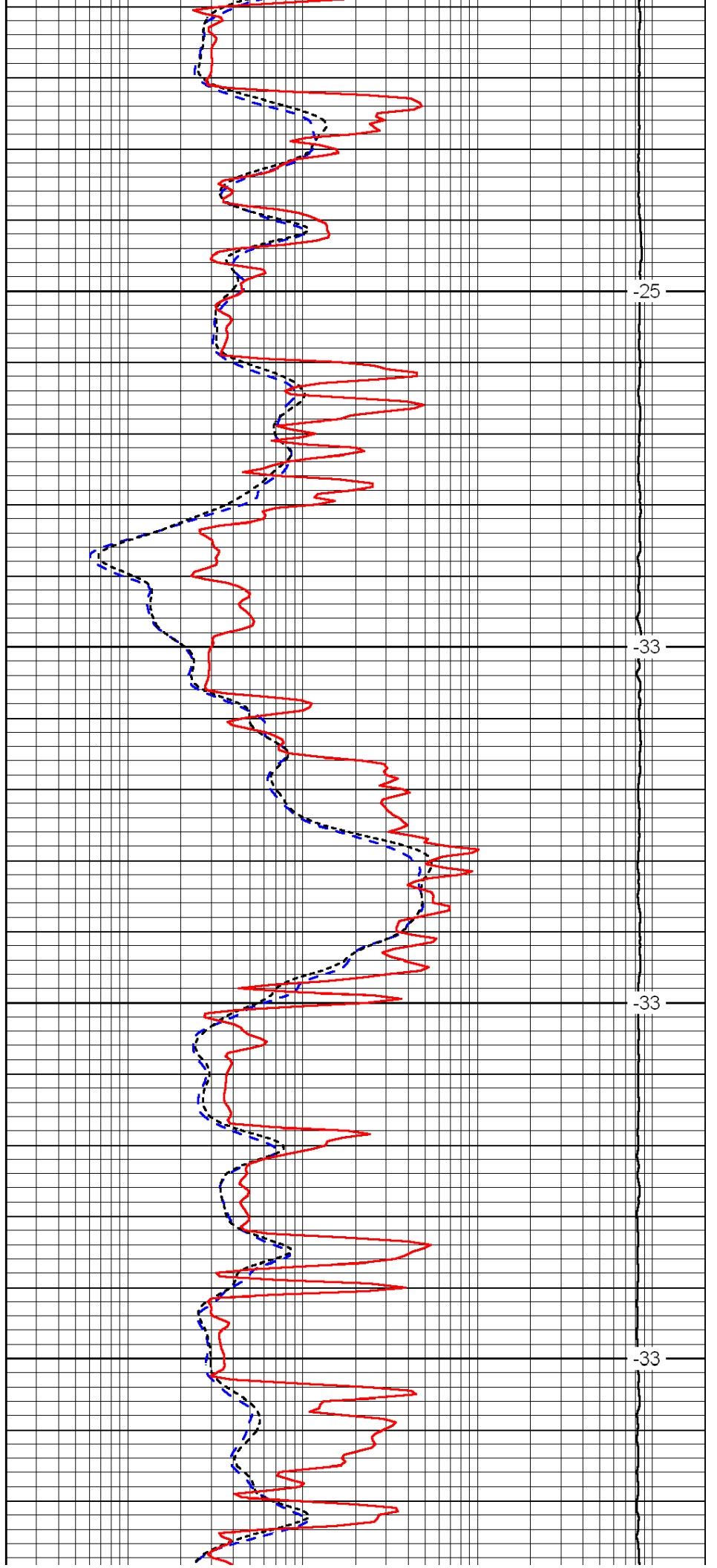


3600

3650

3700

3750

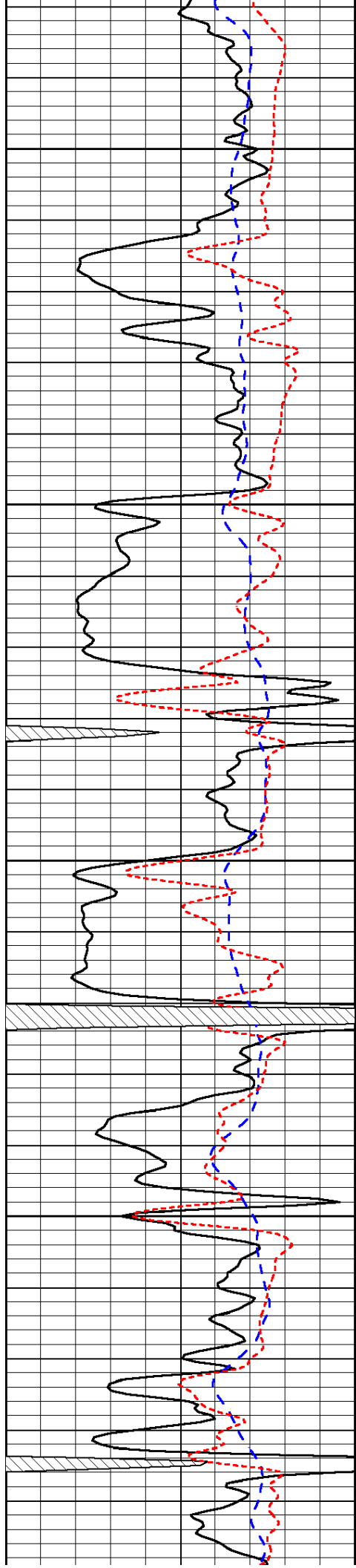


-25

-33

-33

-33

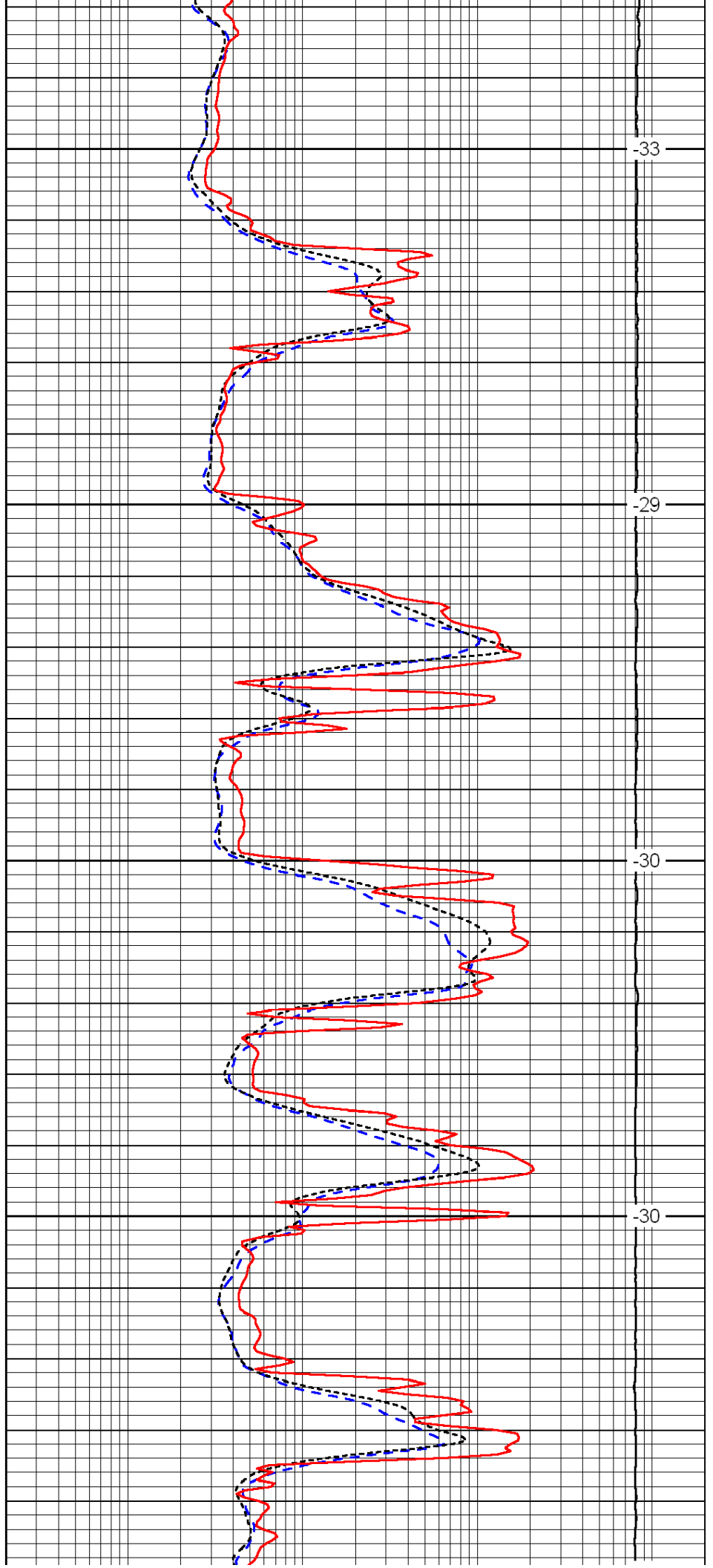


3800

3850

3900

3950

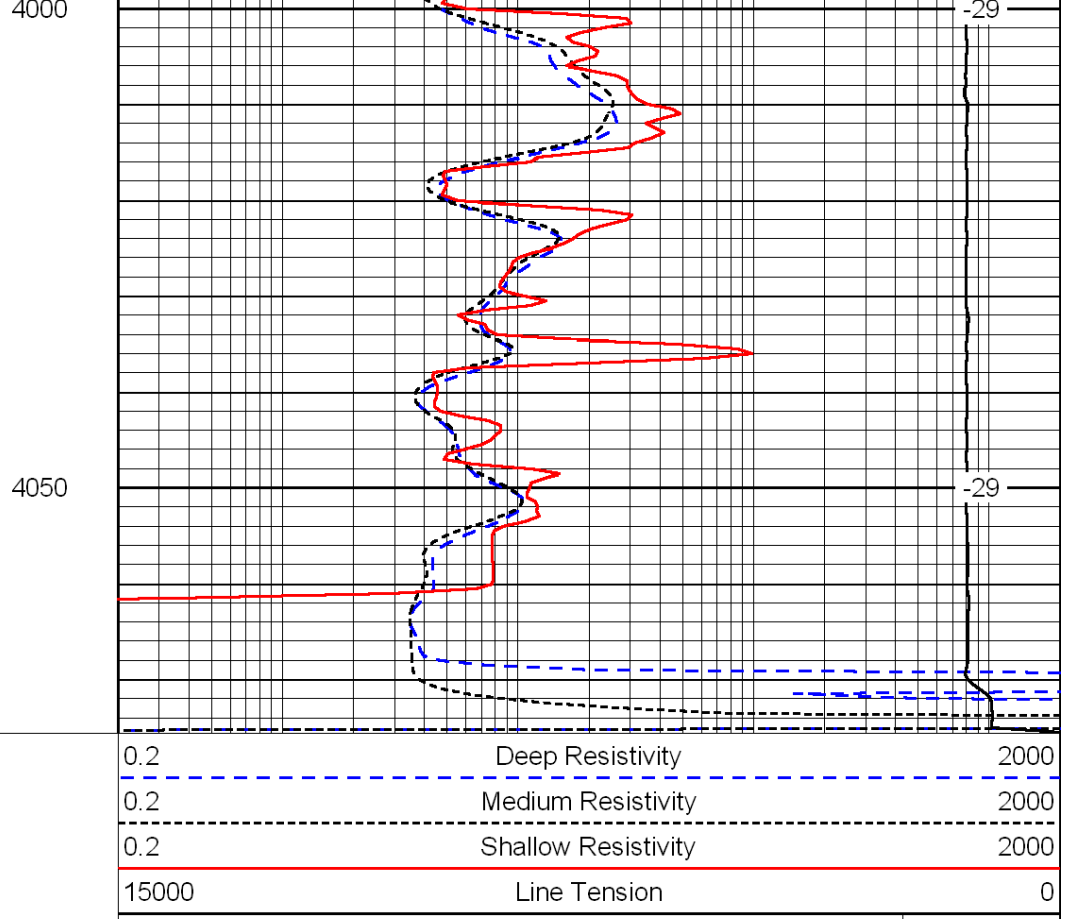
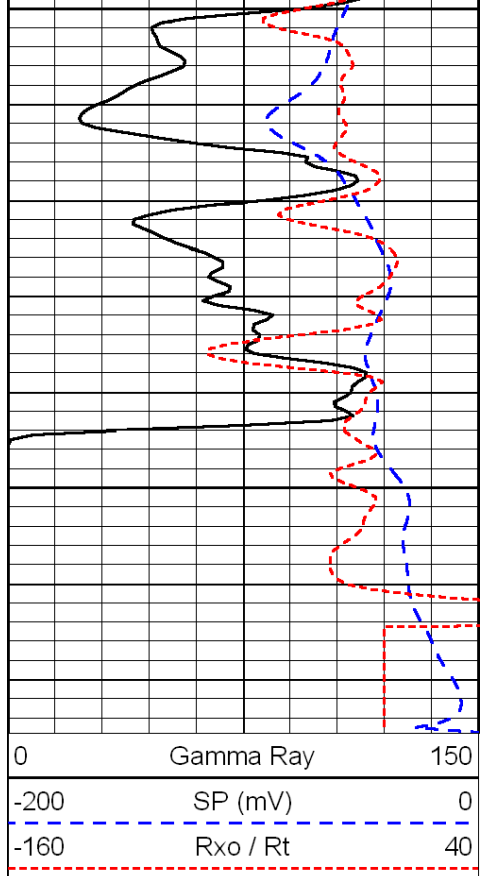


-33

-29

-30

-30



LSPD