



Dual Compensated Porosity Log

DIGITAL LOG (785) 625-3858

API No.	15-039-21,117-00-00		
Company	Cholla Production, LLC		
Well	May-Jording No. 1-23		
Field	Jording		
County	Decatur		
Location	W2 E2 NW NW 660' FNL & 760' FWL		
State	Kansas		
Other Services	DIL MEL/BHCS		

Permanent Datum	Ground Level	Elevation	2830
Log Measured From	Kelly Bushing	5	Ft. Above Perm. Datum
Drilling Measured From	Kelly Bushing		
Date	6/6/2010		

Run Number	One
Type Log	CNL / CDL
Depth Driller	4070
Depth Logger	4070
Bottom Logged Interval	4049
Top Logged Interval	2550
Type Fluid In Hole	Chemical
Salinity, PPM CL	1300
Density	9.1
Level	Full
Max. Rec. Temp. F	119
Operating Rig Time	4 Hours
Equipment -- Location	10 Hays
Recorded By	J. Long
Witnessed By	Bill Goff

Borehole Record				Casing Record			
Run No.	Bit	From	To	Size	Wgt.	From	To
1	12.25	00	303	8.625	24#	00	303
2	7.875	303	4070				

<<< Fold Here >>>

All interpretations are opinions based on inferences from electrical or other measurements and we cannot and do not guarantee the accuracy or correctness of any interpretation, and we shall not, except in the case of gross or willful negligence on our part, be liable or responsible for any loss, costs, damages, or expenses incurred or sustained by anyone resulting from any interpretation made by any of our officers, agents or employees. These interpretations are also subject to our general terms and conditions set out in our current Price Schedule.

Comments

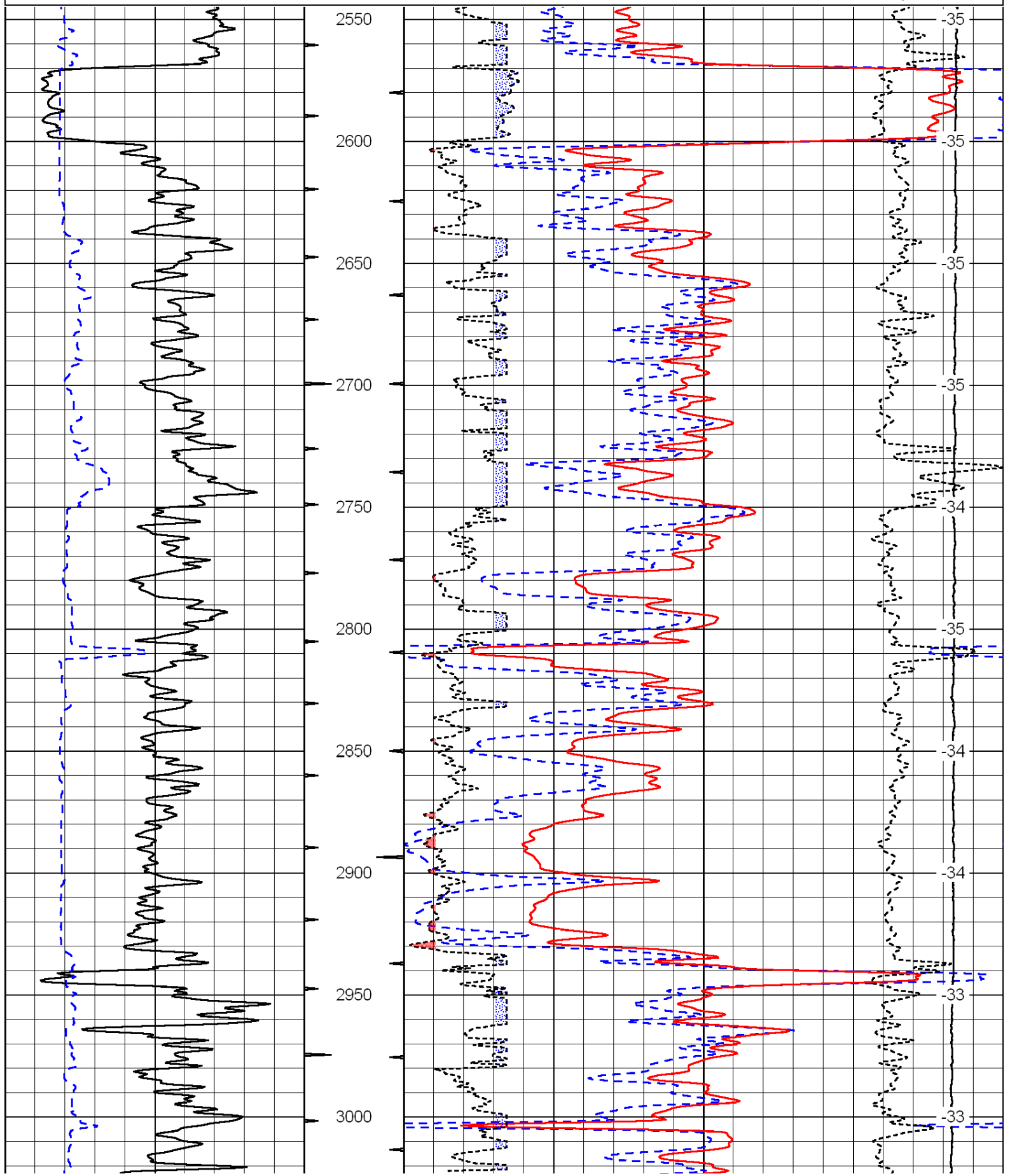
Thank you for using Log-Tech, Inc.
(785) 625-3858

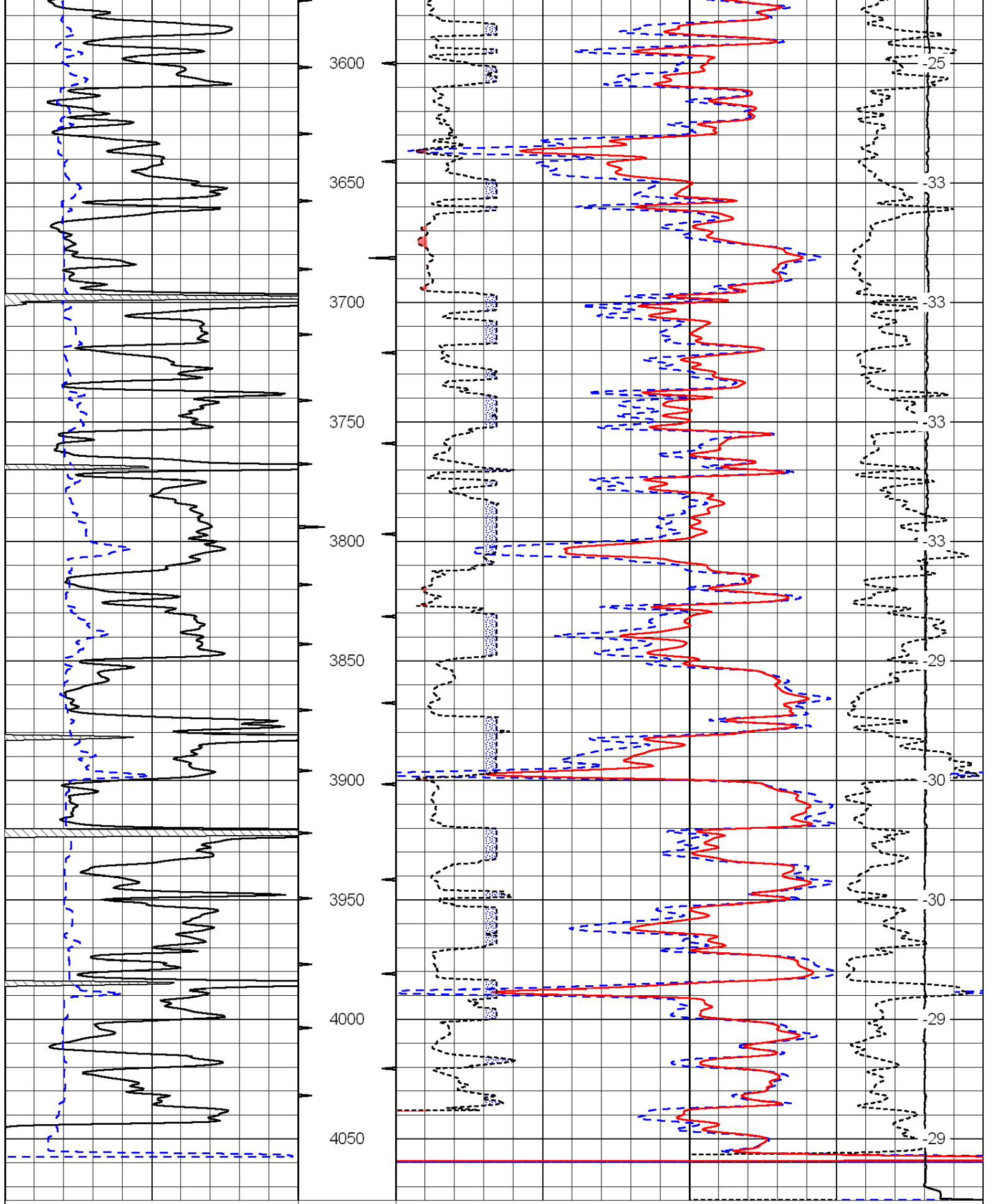
Oberlin, 7 West to 7 Rd, 1 North to T, 1/2 West, 2 North, 1/2 East, South Into

Database File: c:\warrior\data\cholla_may-jording no. 1-23\cholla hd.db
 Dataset Pathname: dil\cholstck
 Presentation Format: cdl
 Dataset Creation: Sun Jun 06 19:07:05 2010
 Charted by: Depth in Feet scaled 1:600

0	Gamma Ray	150
6	Caliper (GAPI)	16

30	Compensated Density		-10
2	Bulk Density		3
15000	Line Tension		0
2.625	DGA	3.425	-0.25
Correction			0.25
LSPD			





0 Gamma Ray 150
 6 Caliper (GAPI) 16

30 Compensated Density -10
 2 Bulk Density 3

15000 Line Tension 0

2.625 DGA 3.425 -0.25 Correction 0.25

Database File: c:\warrior\data\cholla_may-jording no. 1-23\cholla.hd.db
 Dataset Pathname: dil/cholstck
 Presentation Format: cndlspec
 Dataset Creation: Sun Jun 06 19:07:05 2010
 Charted by: Depth in Feet scaled 1:240

0	Gamma Ray	150	30	Compensated Neutron (Limestone)		-10	
6	Caliper (GAPI)	16	30	Compensated Density (2.71 ma)		-10	
		2.625	DGA	3.425	-0.25	Correction	0.25
		15000				Line Tension	0

LSPD

