



Radiation Guard Log

DIGITAL LOG (785) 625-3858

API No. 15-047-21,593-00-00

Company **McCoy Petroleum Corporation**
 Well **Holloman "A" Unit No.1-19**
 Field **CLW**
 County **Edwards** State **Kansas**

Location **NW SW SE**
990' FSL & 2310' FEL
 Sec: **19** Twp: **25S** Rge: **18W**

Permanent Datum **Ground Level** Elevation **2187**
 Log Measured From **Kelly Bushing** 13 Ft. Above Perm. Datum
 Drilling Measured From **Frookelly Bushing**

Other Services
NONE
 Elevation
 K.B. 2200
 D.F. Datum
 G.L. 2187

Date	5/1/2010
Run Number	One
Depth Driller	4670
Depth Logger	4665
Bottom Logged Interval	4664
Top Log Interval	250
Casing Driller	8.625 @ 282
Casing Logger	266
Bit Size	7.875
Type Fluid in Hole	Chemical
Salinity.ppm CL	6.400
Density / Viscosity	9.1 49
pH / Fluid Loss	9.5 8.4
Source of Sample	Flowline
Rm @ Meas. Temp	.8 @ 66
Rmf @ Meas. Temp	.6 @ 66
Rmc @ Meas. Temp	1.08 @ 66
Source of Rmf / Rmc	Charts
Rm @ BHT	.42 @ 125
Operating Rig Time	3 Hours
Max Rec. Temp. F	125
Equipment Number	15
Location	Hays
Recorded By	C. Desaire
Witnessed By	Robert Hendrix

<<< Fold Here >>>

All interpretations are opinions based on inferences from electrical or other measurements and we cannot and do not guarantee the accuracy or correctness of any interpretation, and we shall not, except in the case of gross or willful negligence on our part, be liable or responsible for any loss, costs, damages, or expenses incurred or sustained by anyone resulting from any interpretation made by any of our officers, agents or employees. These interpretations are also subject to our general terms and conditions set out in our current Price Schedule.

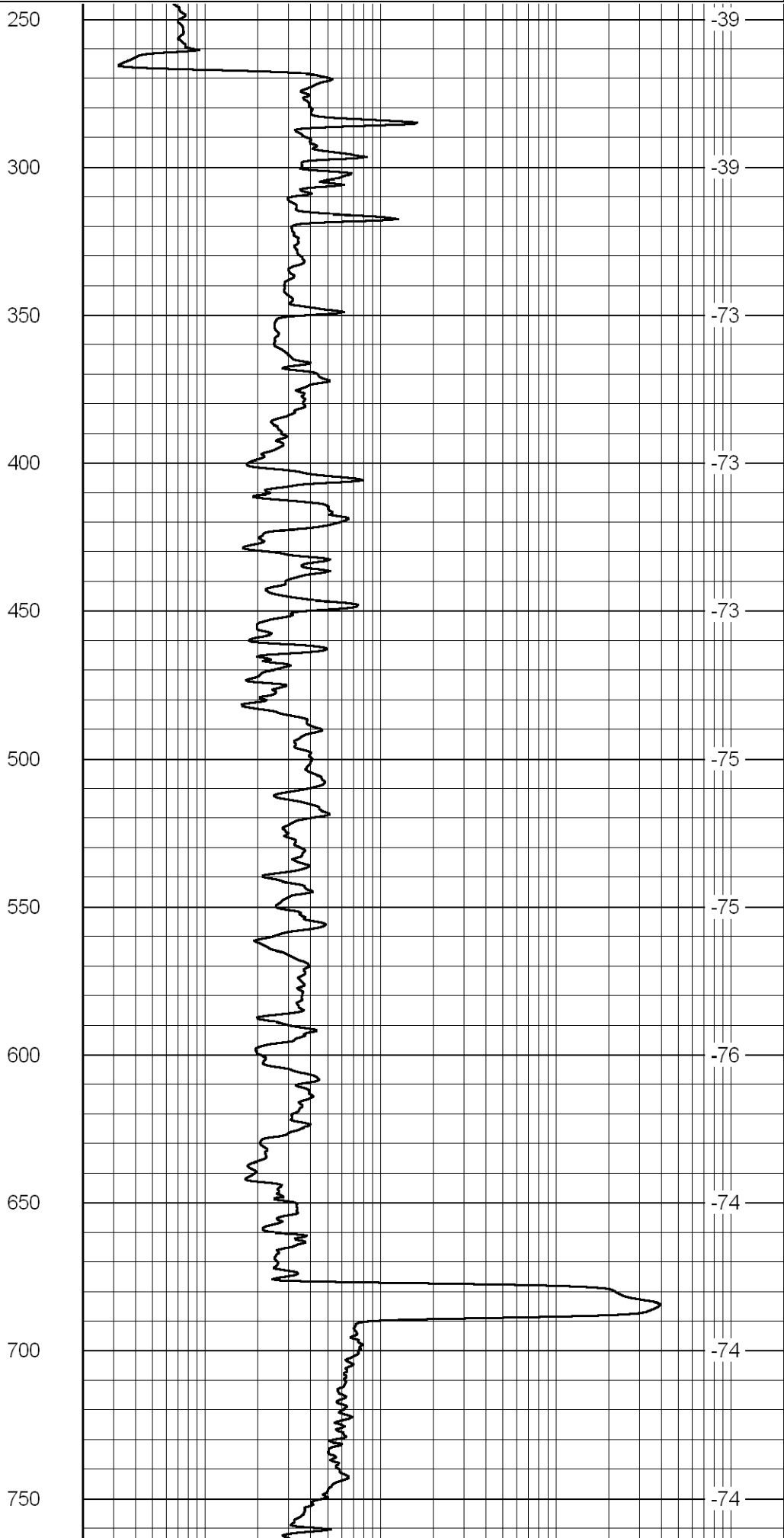
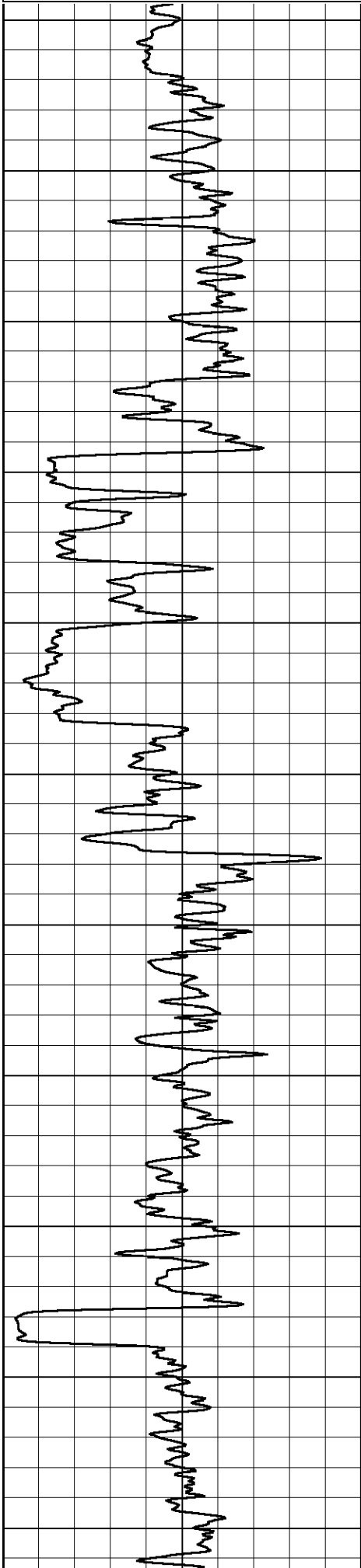
Comments

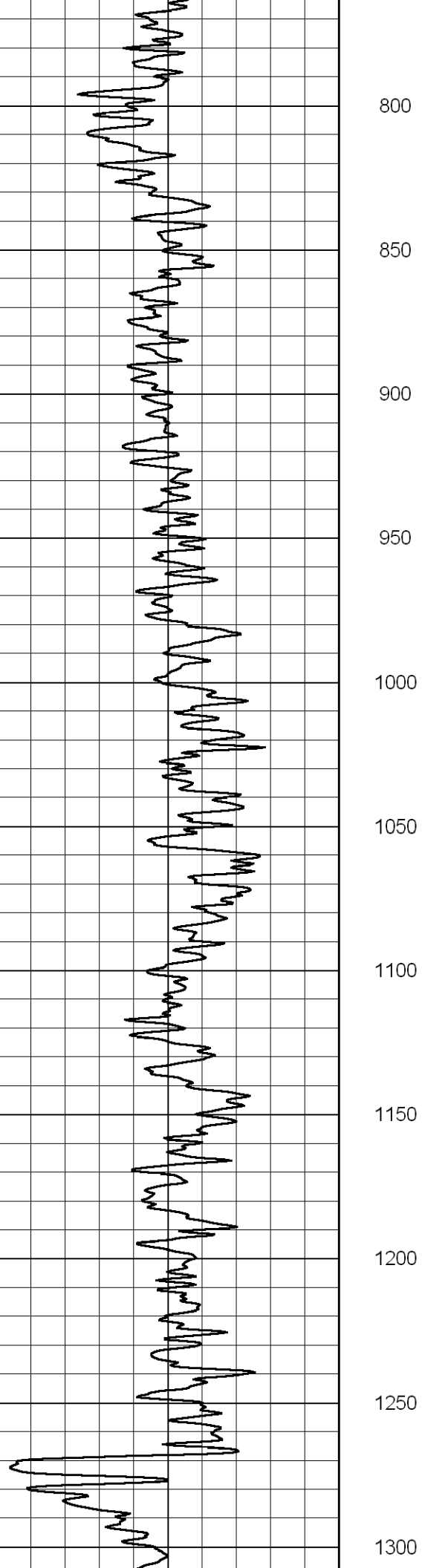
Thank you for using Log-Tech, Inc.
 (785) 625-3858

 Kinsley, 3 S to Golden Belt Feeders,
 3 E, 1 S, 1/2 W, N Into

Database File: mccoymhd.db
 Dataset Pathname: rag/mcoyrag
 Presentation Format: rag2in
 Dataset Creation: Sat May 01 05:15:57 2010
 Charted by: Depth in Feet scaled 1:600

LSPD





800

850

900

950

1000

1050

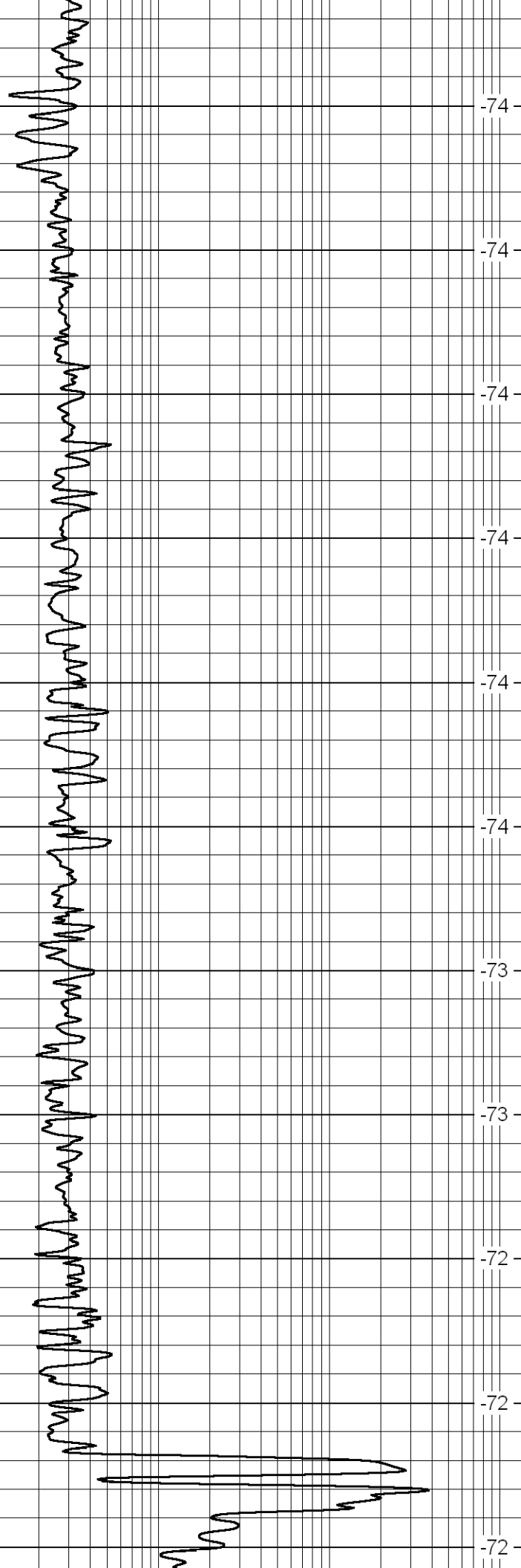
1100

1150

1200

1250

1300



-74

-74

-74

-74

-74

-74

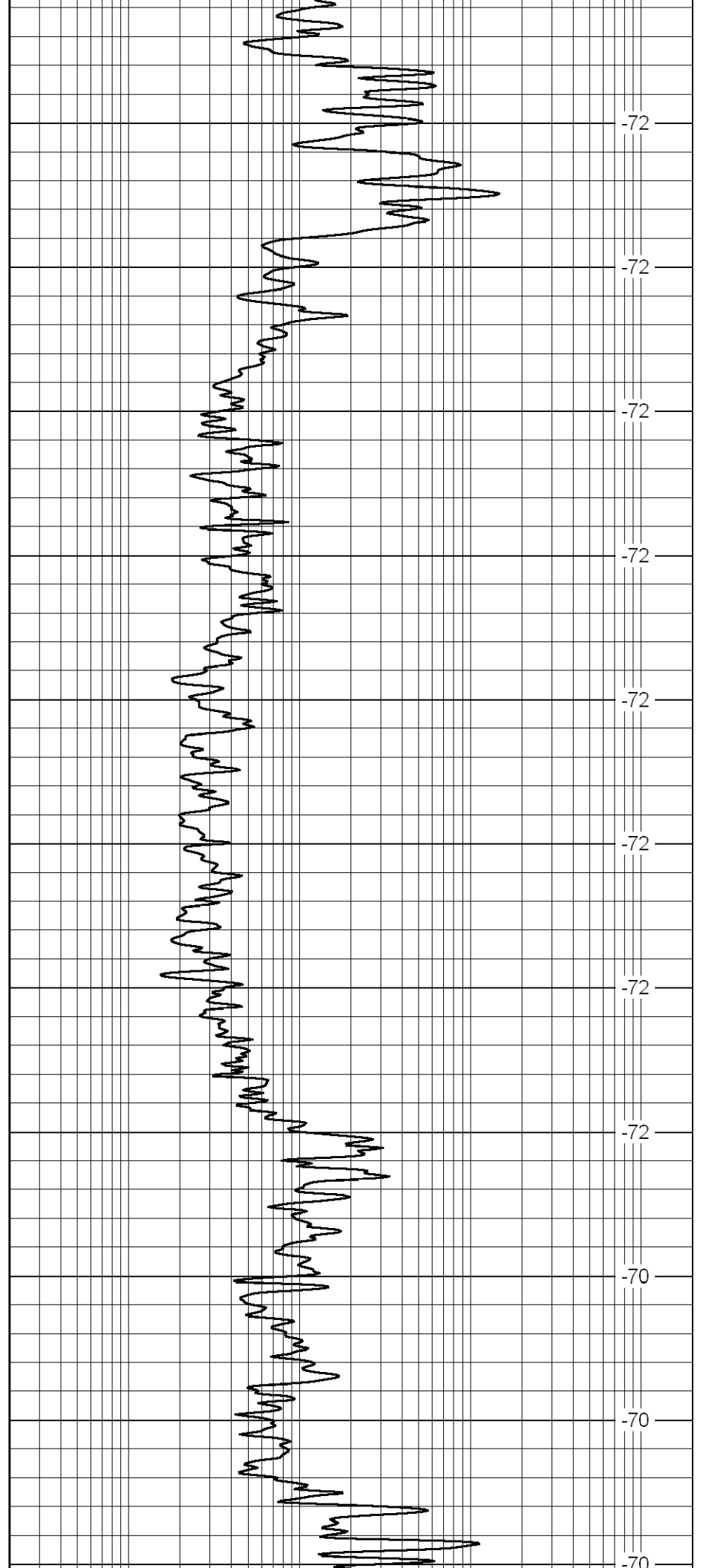
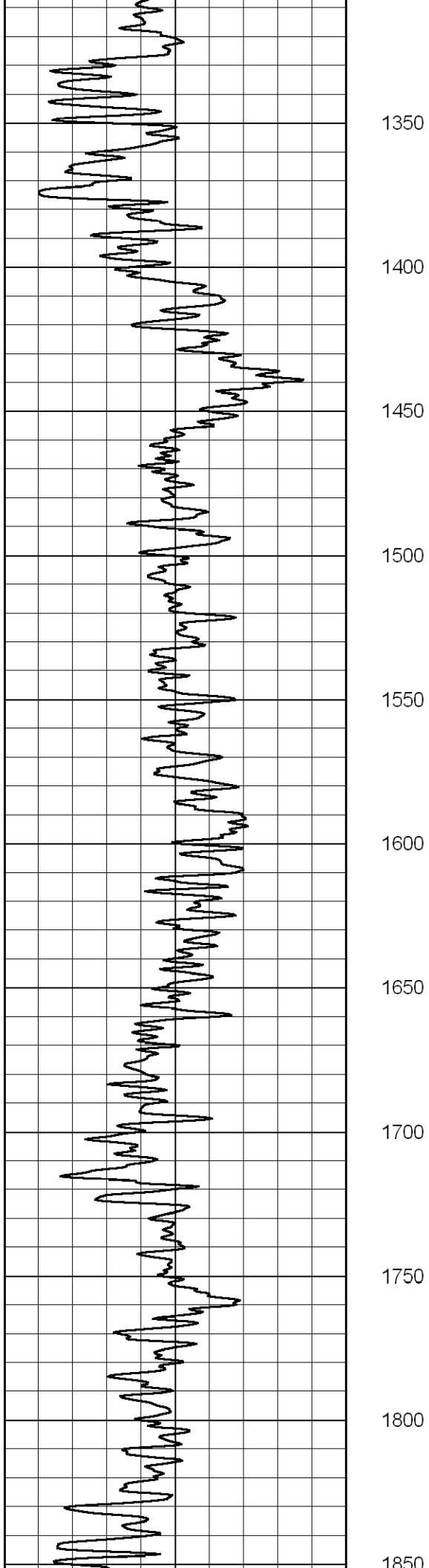
-73

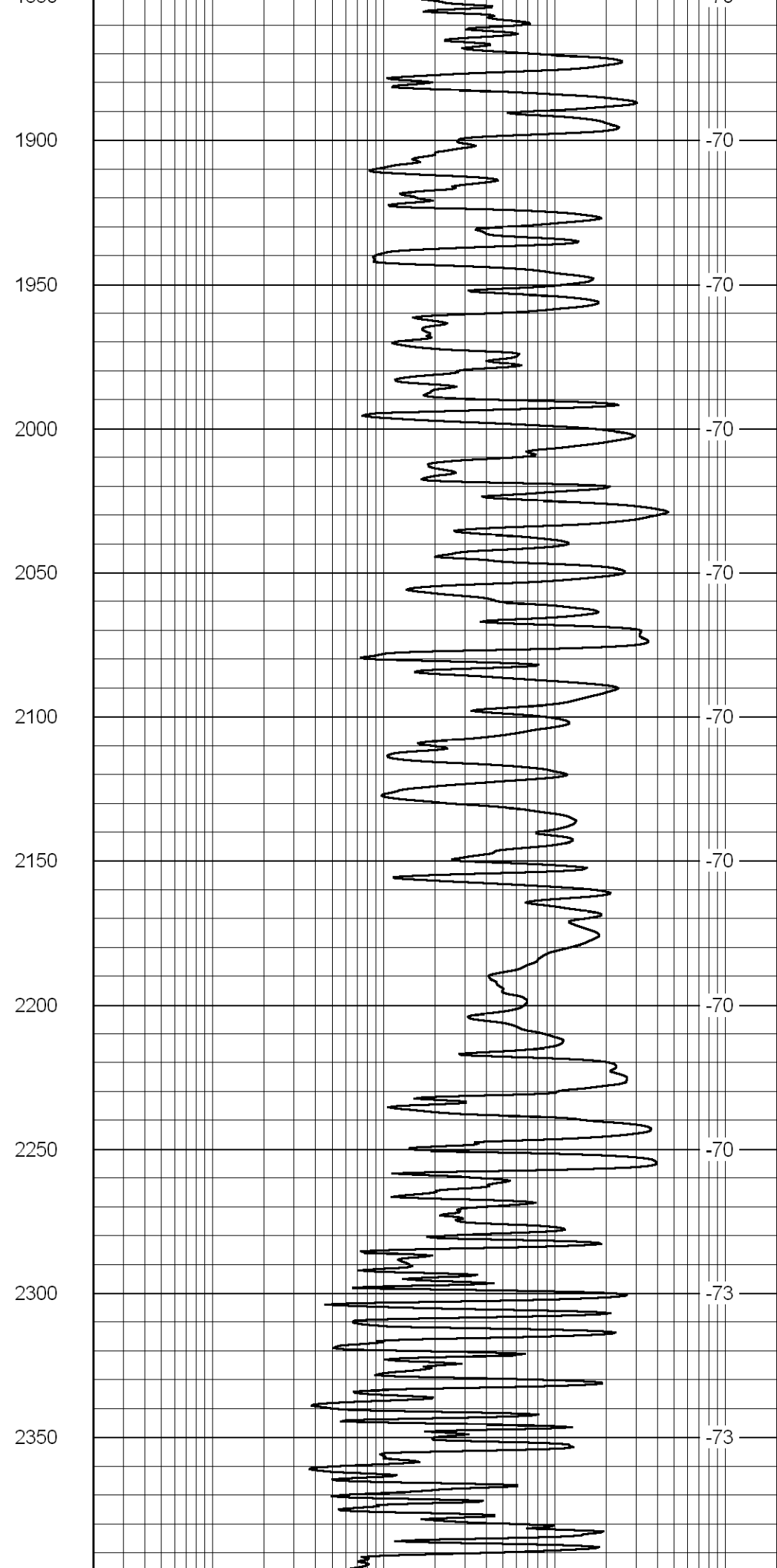
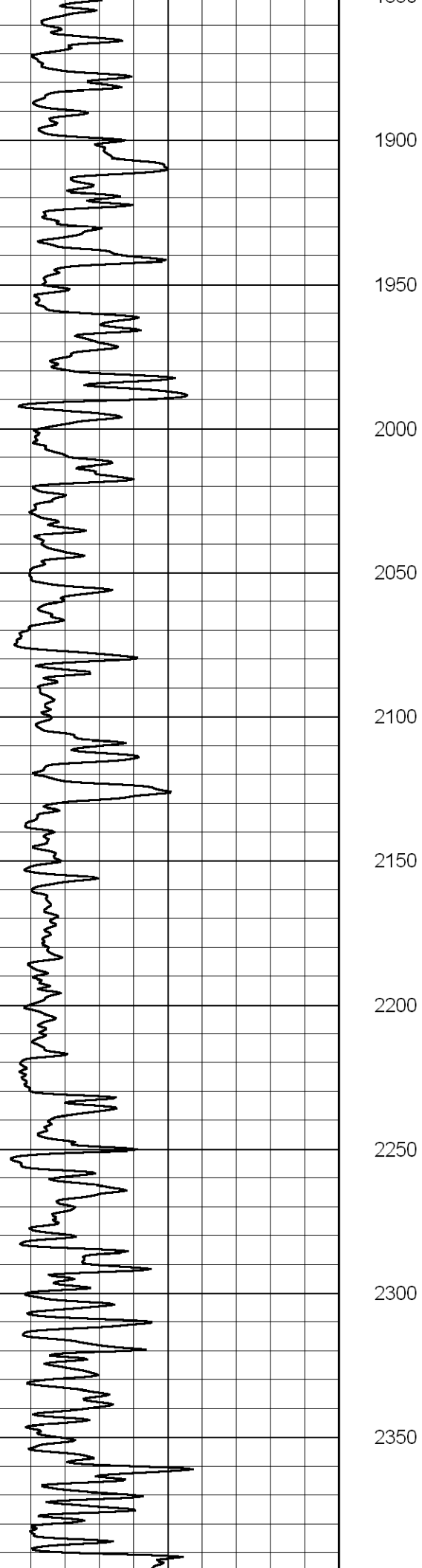
-73

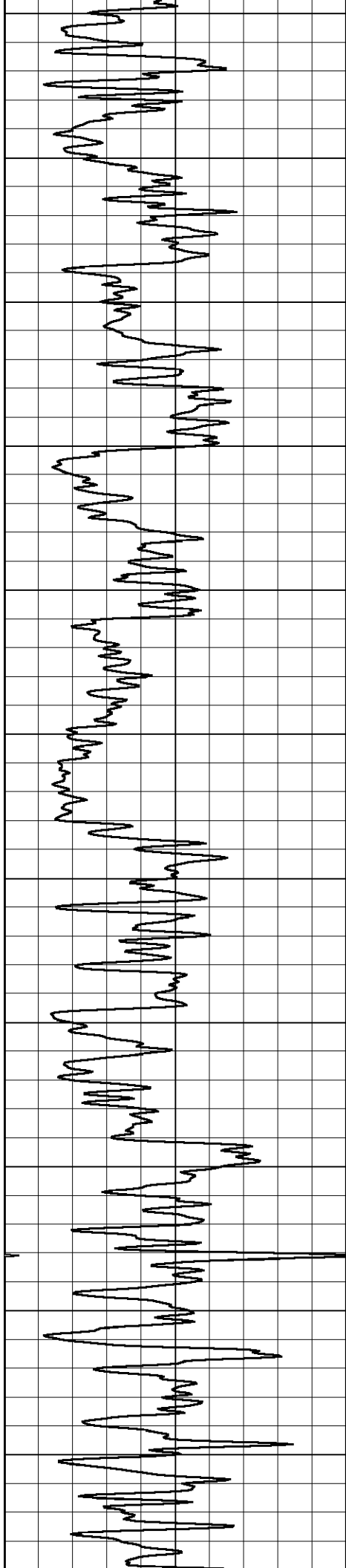
-72

-72

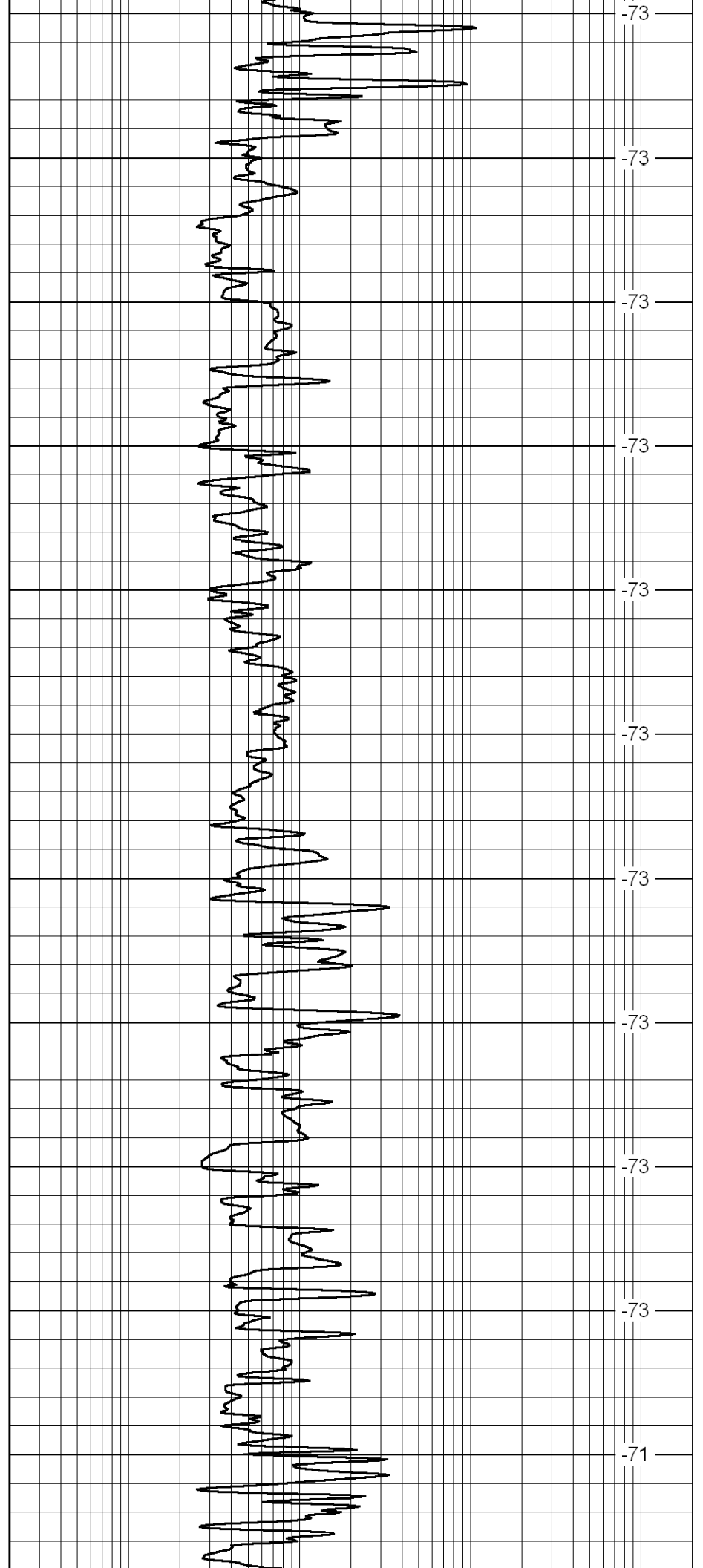
-72



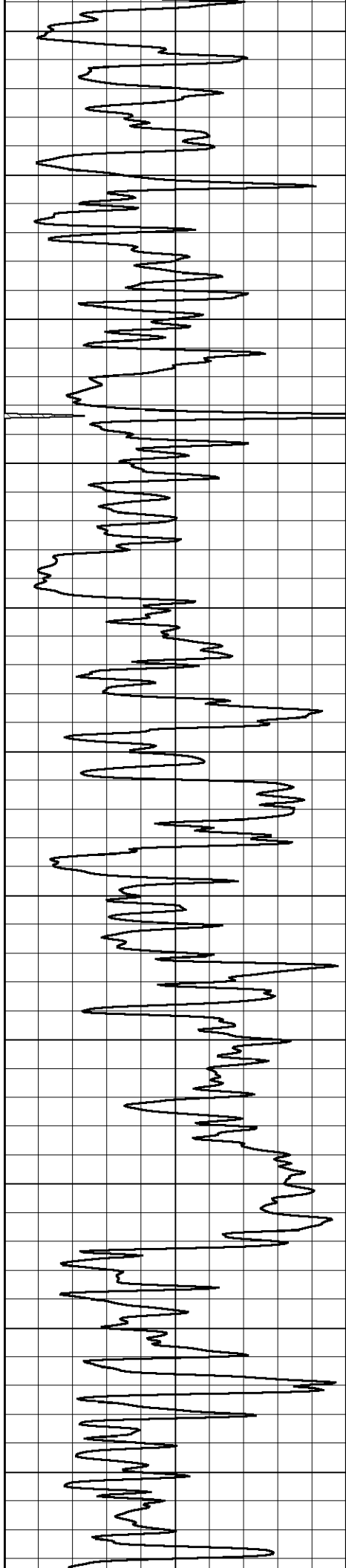




2400
2450
2500
2550
2600
2650
2700
2750
2800
2850
2900



-73
-73
-73
-73
-73
-73
-73
-73
-73
-73
-71



2950

3000

3050

3100

3150

3200

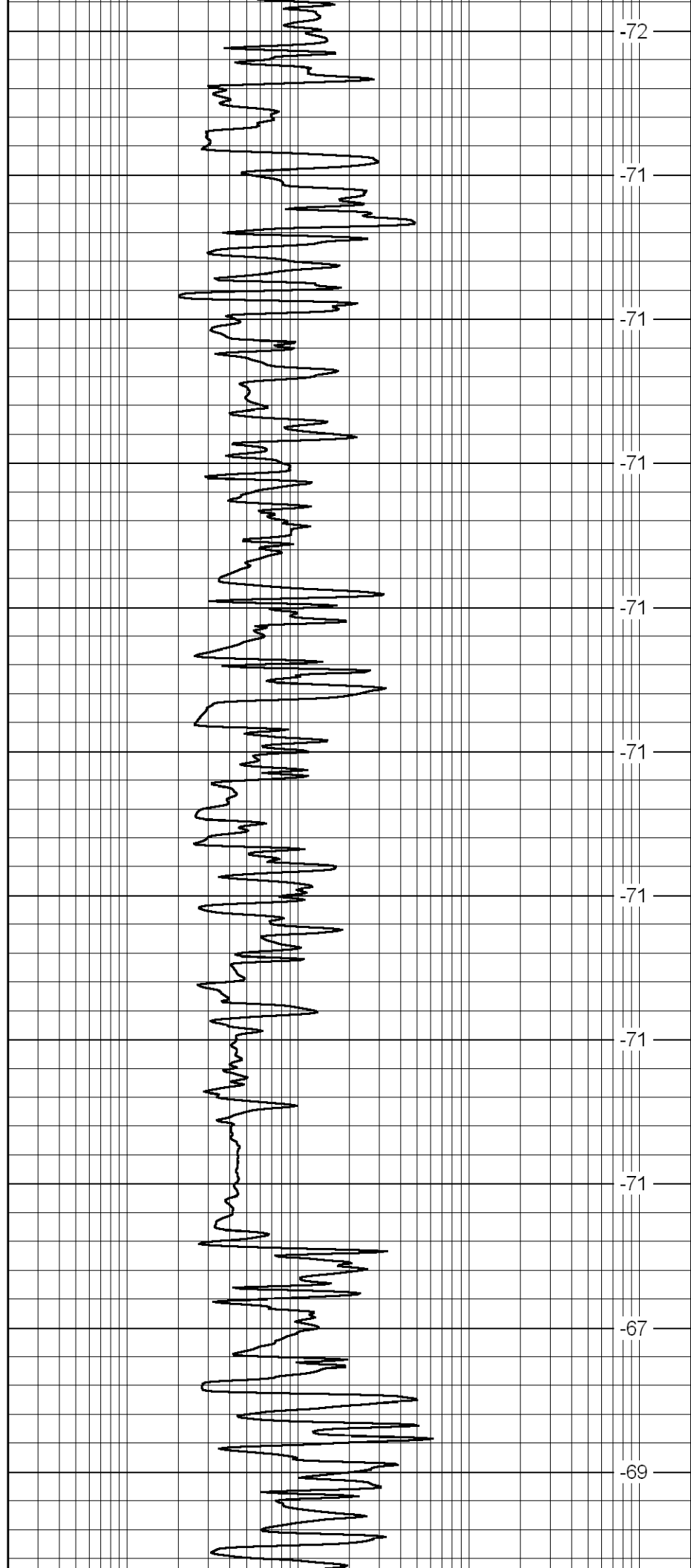
3250

3300

3350

3400

3450



-72

-71

-71

-71

-71

-71

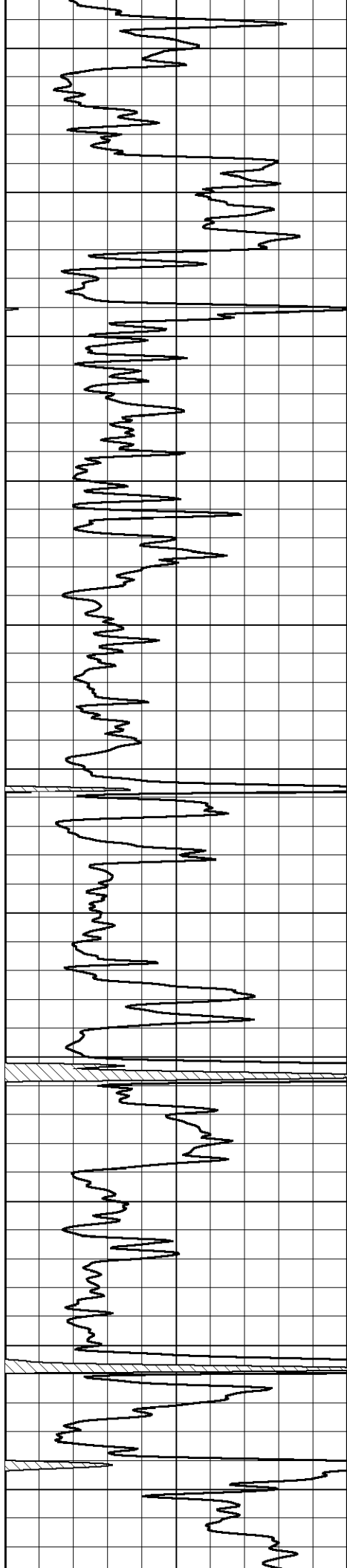
-71

-71

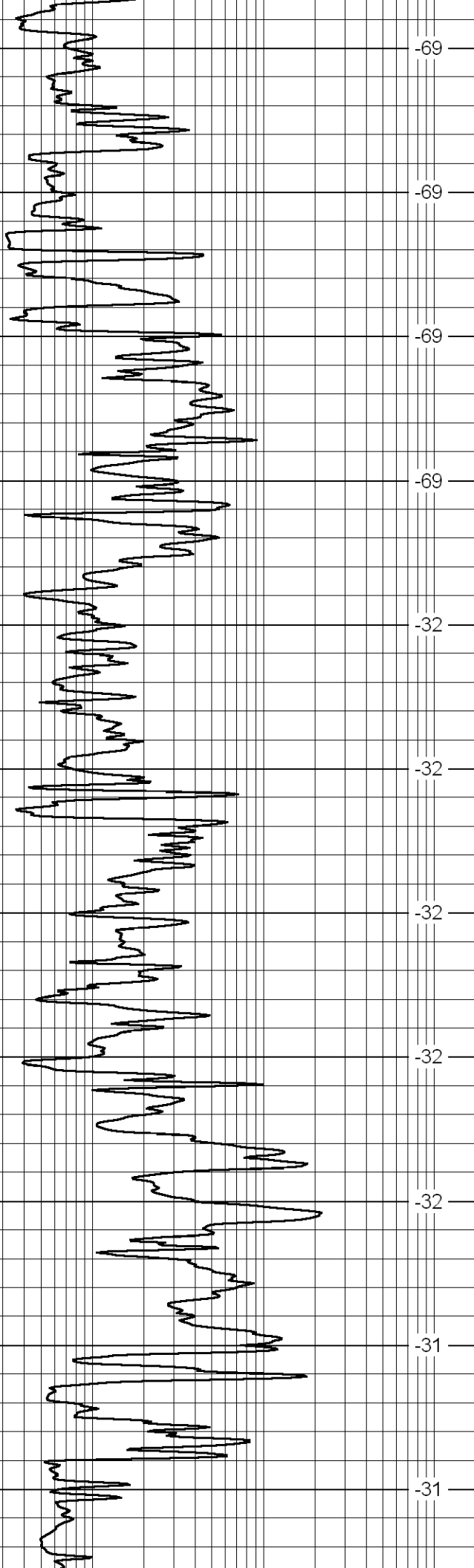
-71

-67

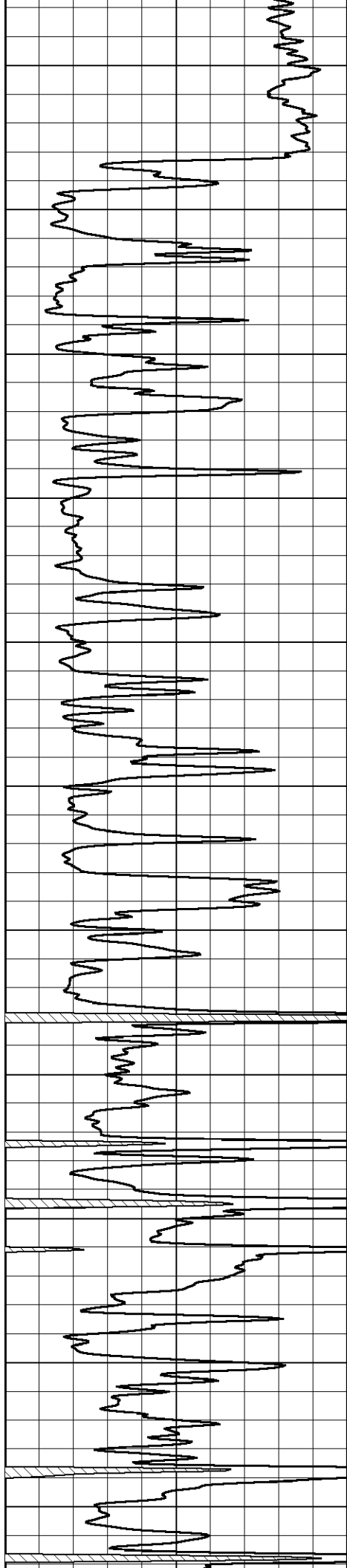
-69



3500
3550
3600
3650
3700
3750
3800
3850
3900
3950
4000



-69
-69
-69
-69
-32
-32
-32
-32
-32
-32
-31
-31



4050

4100

4150

4200

4250

4300

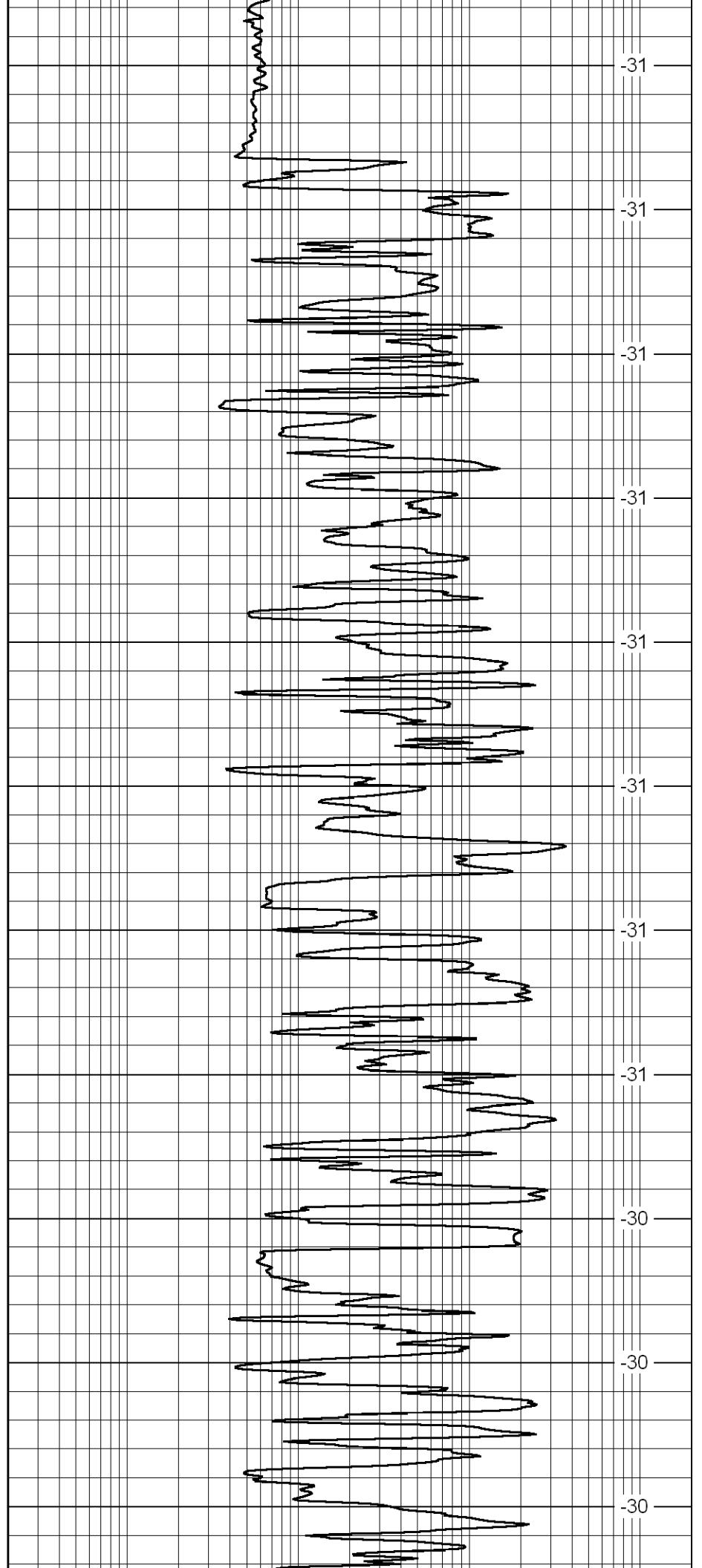
4350

4400

4450

4500

4550



-31

-31

-31

-31

-31

-31

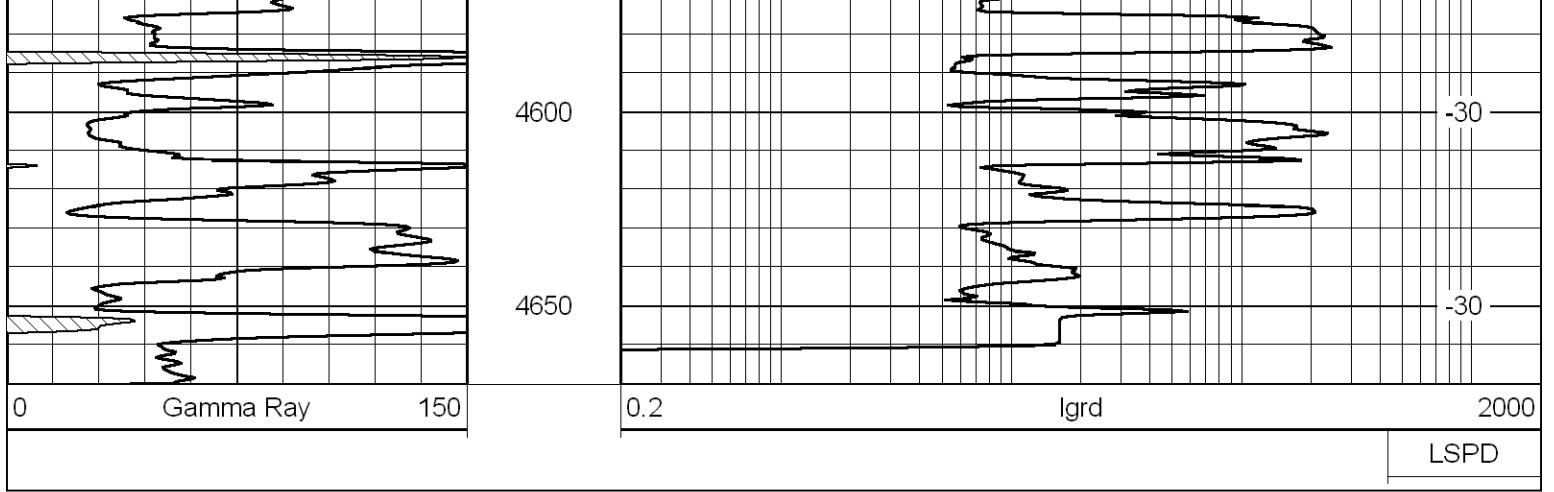
-31

-31

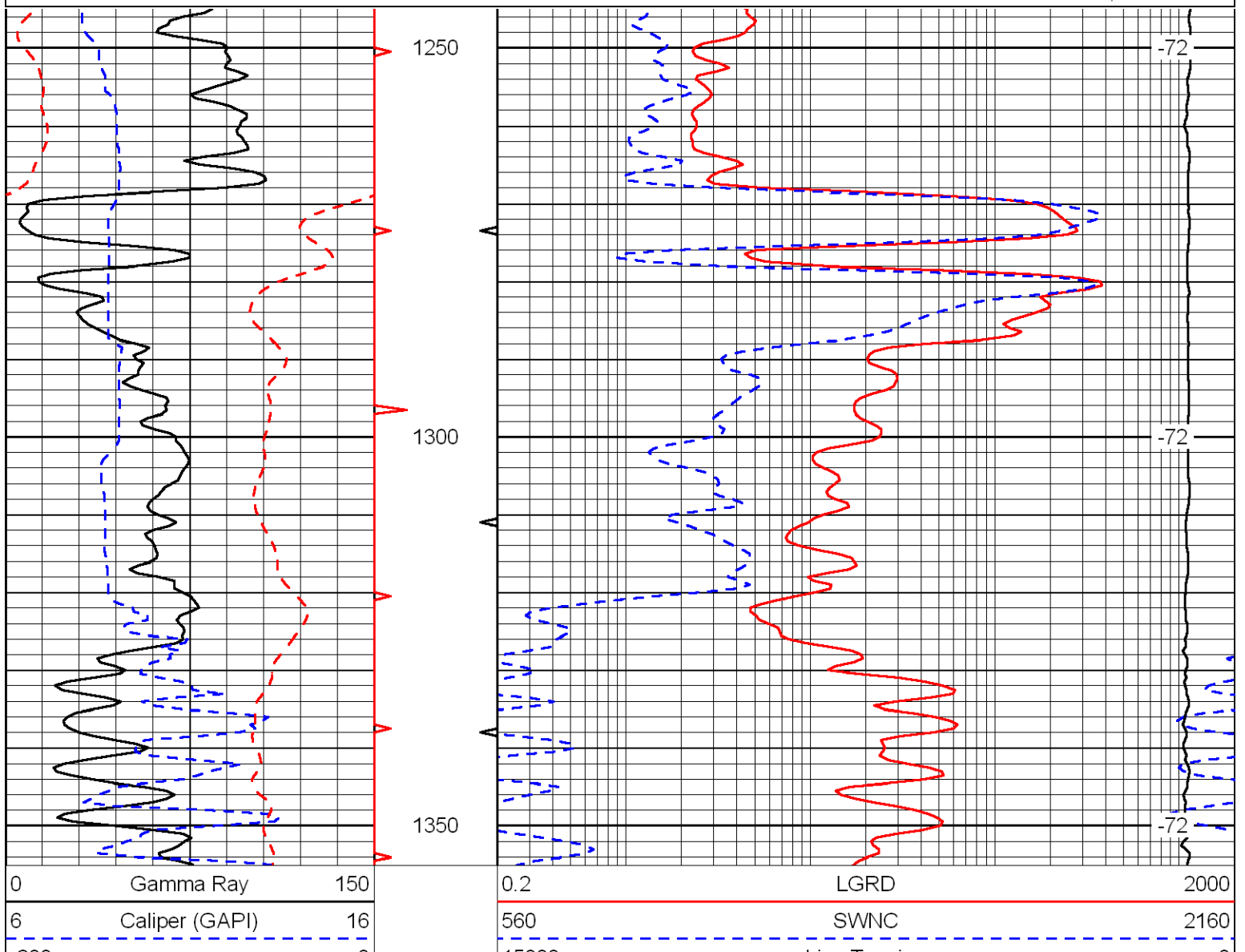
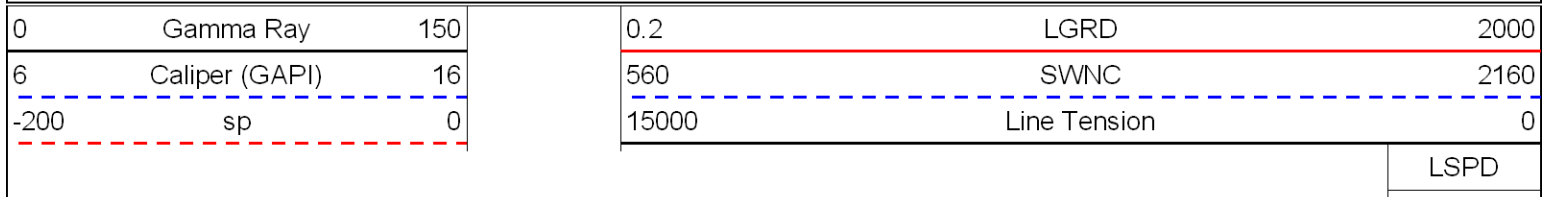
-30

-30

-30



Database File: mccoysdb
 Dataset Pathname: rag/mccoysrag
 Presentation Format: rag
 Dataset Creation: Sat May 01 05:15:57 2010
 Charted by: Depth in Feet scaled 1:240



-200 sp 0

15000 Line Tension 0

LSPD

Database File: mccoysd.db
 Dataset Pathname: rag/mcoyrag
 Presentation Format: rag
 Dataset Creation: Sat May 01 05:15:57 2010
 Charted by: Depth in Feet scaled 1:240

0	Gamma Ray	150
6	Caliper (GAPI)	16
-200	sp	0

0.2	LGRD	2000
560	SWNC	2160
15000	Line Tension	0

LSPD

