



SUPERIOR
Hays,
Kansas

**DUAL INDUCTION
LOG**

Company LOTUS OPERATING CO. LLC.
Well #1 BRENNER
Field WILDCAT
County PRATT
State KANSAS

Company LOTUS OPERATING COMPANY, LLC.
Well #1 BRENNER
Field WILDCAT
County PRATT State KANSAS

Location: API #: 15-151-22345-0000
2130' FNL & 990' FWL
SEC 14 TWP 29S RGE 15W
Permanent Datum GROUND LEVEL Elevation 1964
Log Measured From KELLY BUSHING 13' A.G.L.
Drilling Measured From KELLY BUSHING
Other Services
CDL/CNL/PE
MEL/SONIC
Elevation
K.B. 1977
D.F. 1975
G.L. 1964

Date	2/5/10		
Run Number	ONE		
Depth Driller	4845		
Depth Logger	4846		
Bottom Logged Interval	4844		
Top Log Interval	00		
Casing Driller	10 3/4"@300'		
Casing Logger	298		
Bit Size	7 7/8"		
Type Fluid In Hole	CHEMICAL MUD	CHLORIDES 7,000 PPM	
Density / Viscosity	9.1/44		
pH / Fluid Loss	10.0/8.8		
Source of Sample	FLOWLINE		
Rm @ Meas. Temp	.650@71F		
Rmf @ Meas. Temp	.488@71F		
Rmc @ Meas. Temp	.780@71F		
Source of Rmf / Rmc	MEASUREMENT		
Rm @ BHT	.372@124F		
Time Circulation Stopped	3 HOURS		
Time Logger on Bottom	5:30 A.M.		
Maximum Recorded Temperature	124F		
Equipment Number	0836		
Location	HAYS, KANSAS		
Recorded By	JEFF LUEBBERS		
Witnessed By	TIM HELLMAN		

<<< Fold Here >>>

All interpretations are opinions based on inferences from electrical or other measurements and we cannot and do not guarantee the accuracy or correctness of any interpretation, and we shall not, except in the case of gross or willful negligence on our part, be liable or responsible for any loss, costs, damages, or expenses incurred or sustained by anyone resulting from any interpretation made by any of our officers, agents or employees. These interpretations are also subject to our general terms and conditions set out in our current Price Schedule.

Comments

THANK YOU FOR USING SUPERIOR WELL SERVICE HAYS, KANSAS (785) 628-6395
DIRECTIONS
CULLISON, KS., 2W. ON HWY 54 TO "RD. 110", 7S., E. INTO



SUPERIOR
Hays,
Kansas

MAIN SECTION

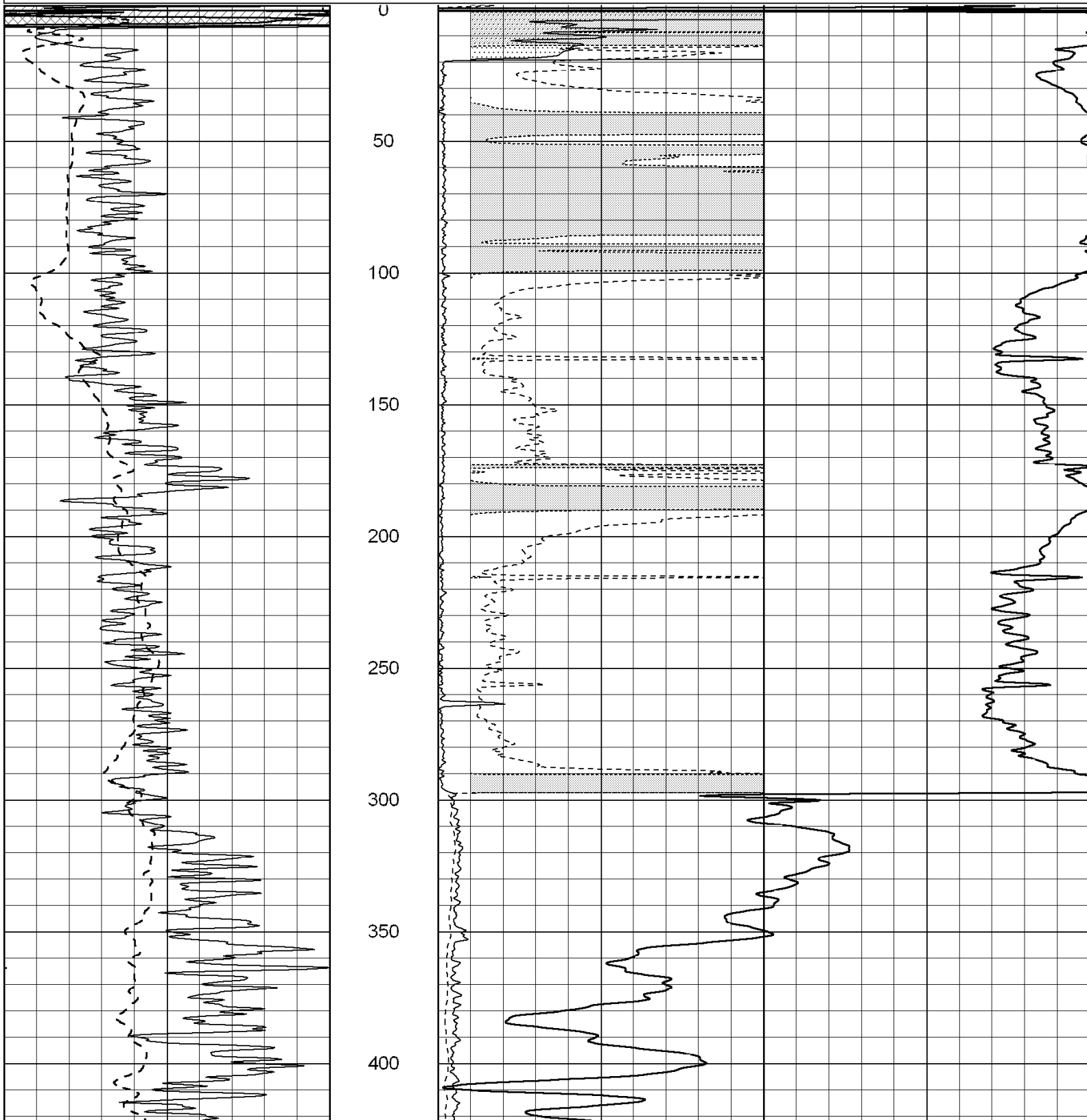
Database File: 004715pe.db
 Dataset Pathname: pass3.6
 Presentation Format: dil2
 Dataset Creation: Fri Feb 05 07:31:05 2010 by Calc Open-Cased 060407
 Charted by: Depth in Feet scaled 1:600

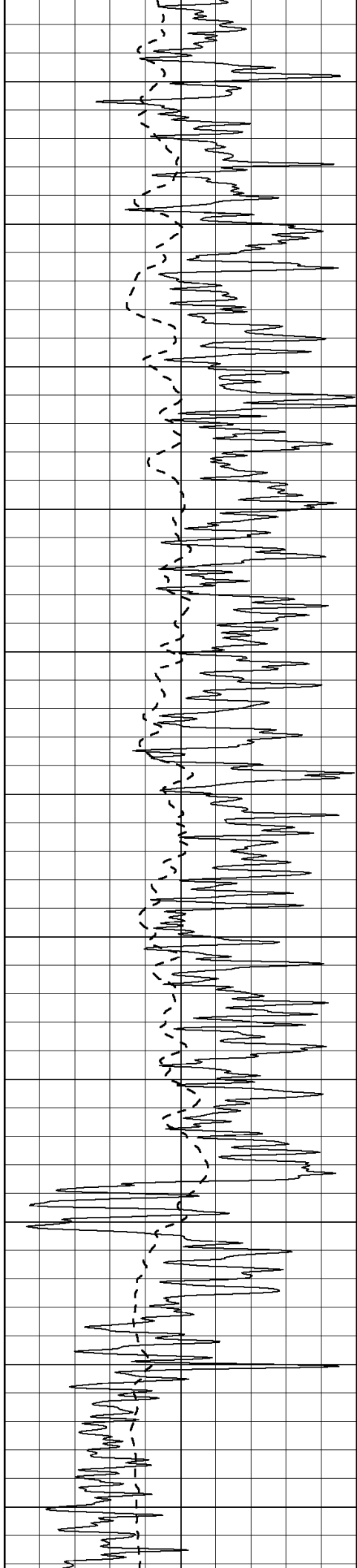
0	Gamma Ray (GAPI)	150
-100	SP (mV)	100

0	RLL3 (Ohm-m)	50
0	RILD (Ohm-m)	50

1000	CILD (mmho-m)	0
------	---------------	---

50	RILD X10 (Ohm-m)	500
50	RLL3 X10 (Ohm-m)	500





450

500

550

600

650

700

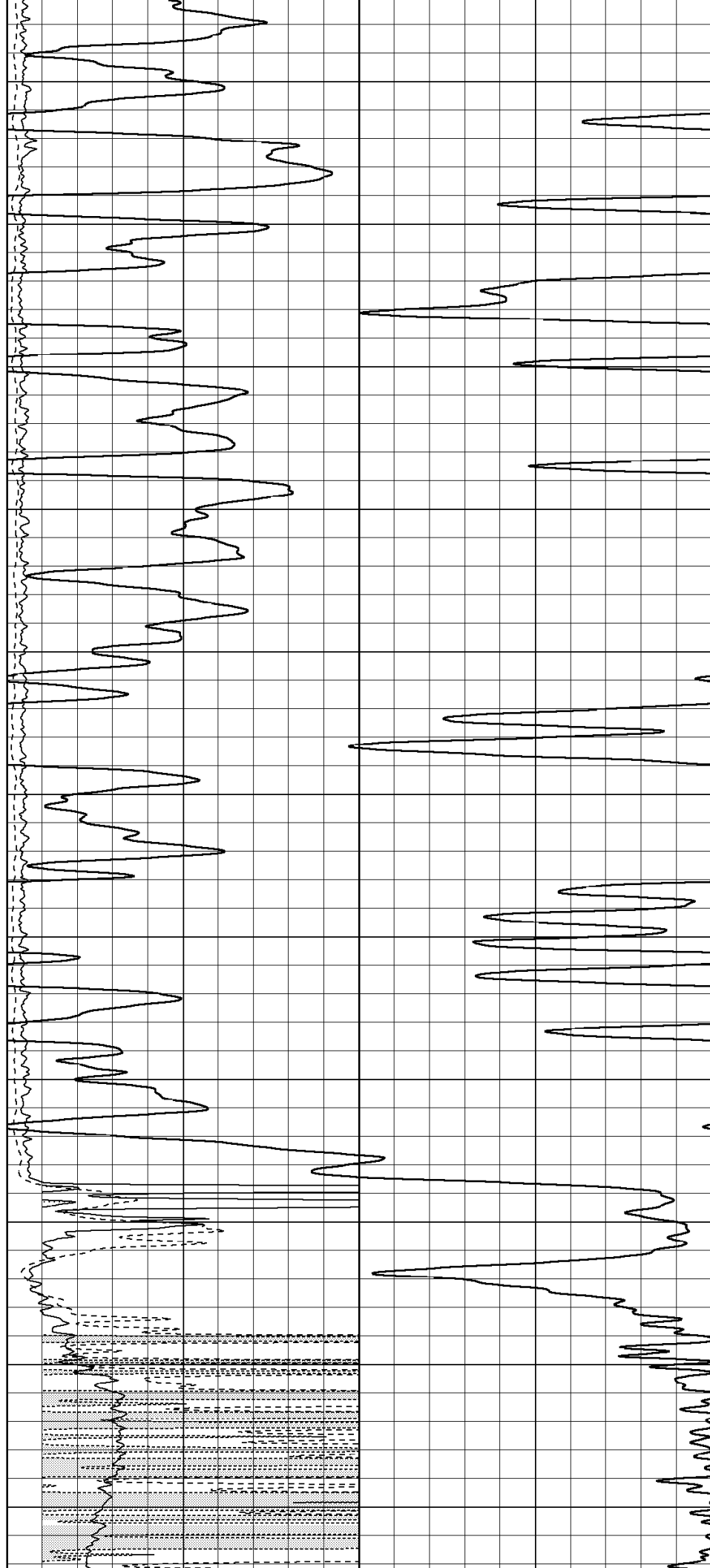
750

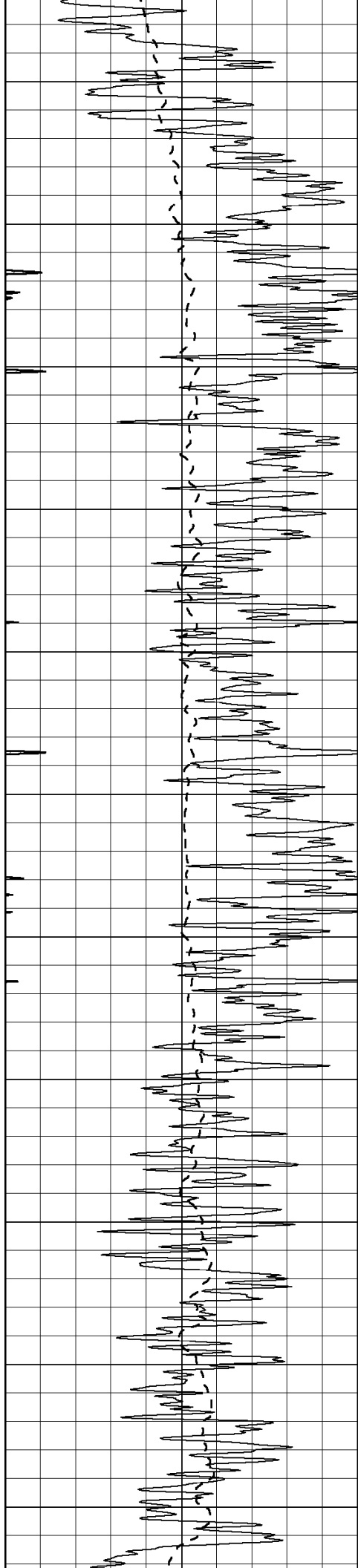
800

850

900

950





1000

1050

1100

1150

1200

1250

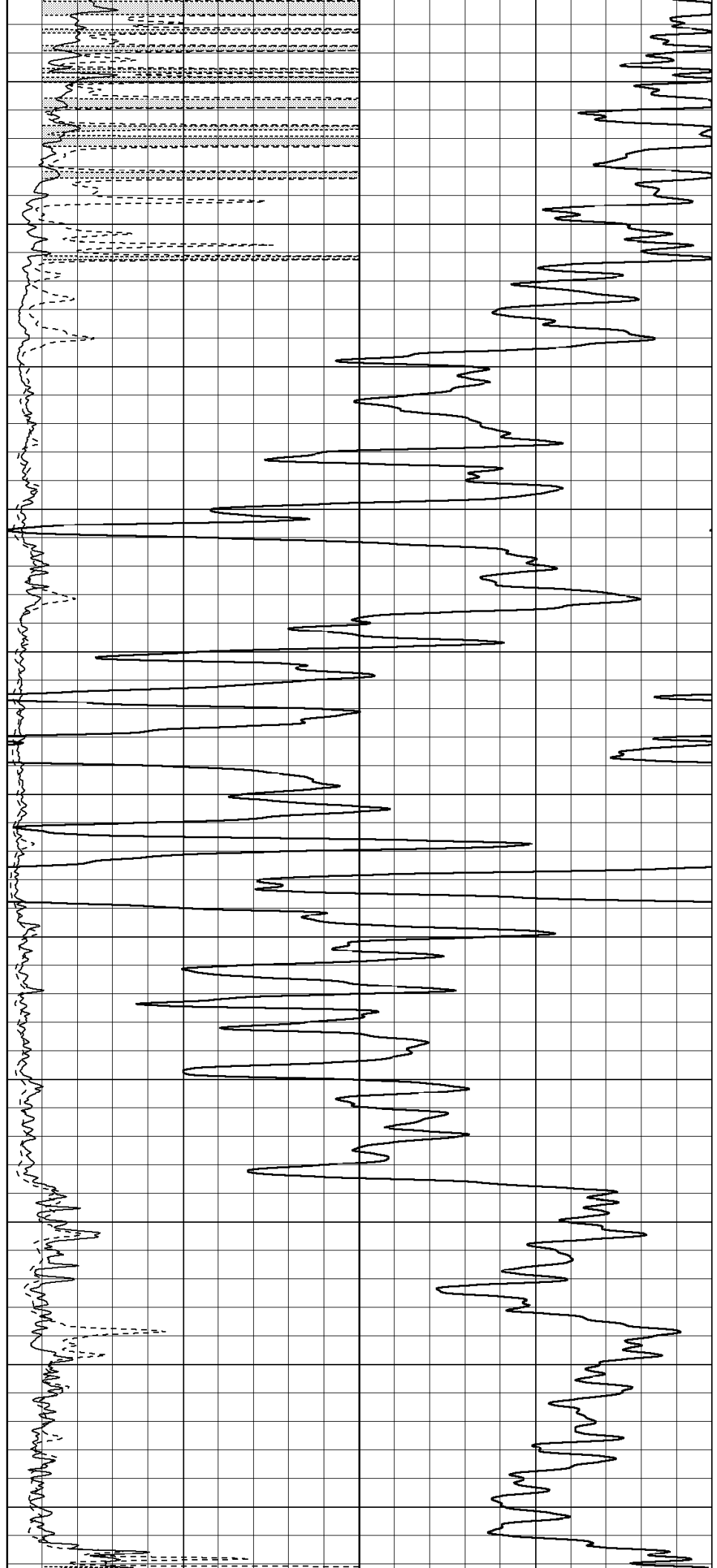
1300

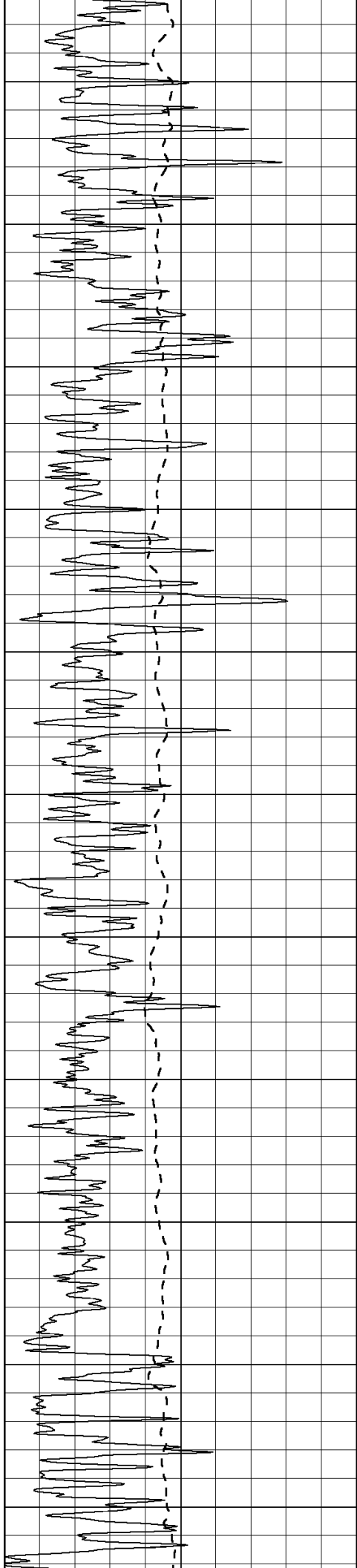
1350

1400

1450

1500





1550

1600

1650

1700

1750

1800

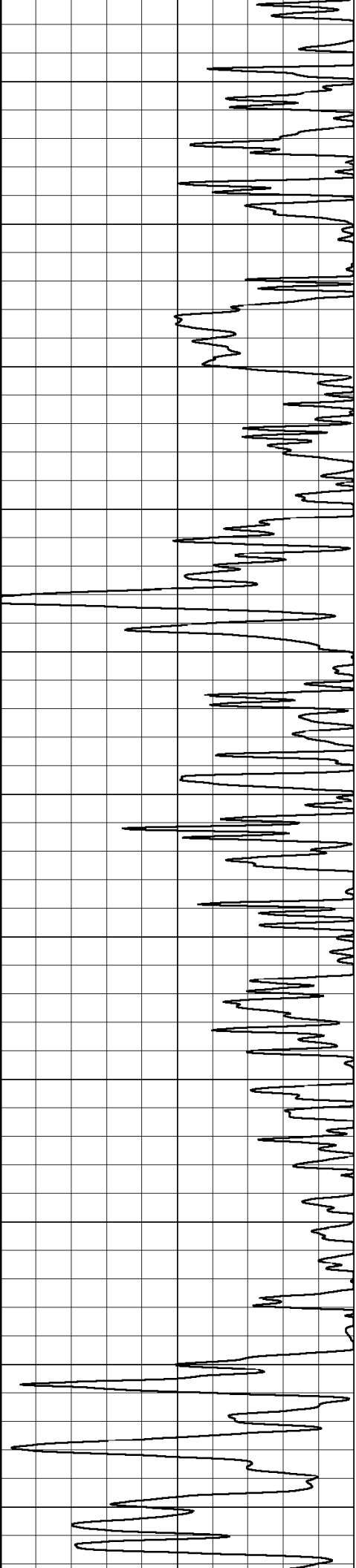
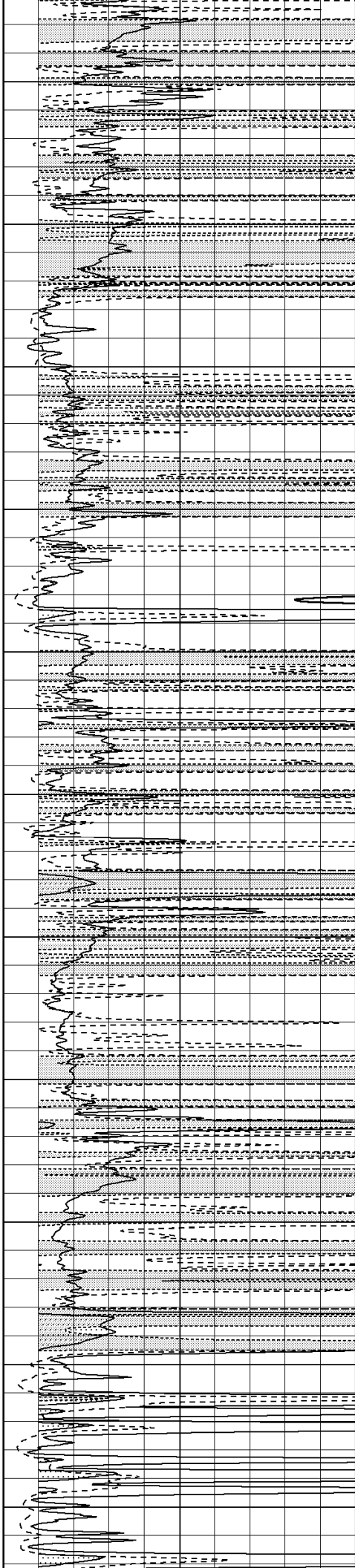
1850

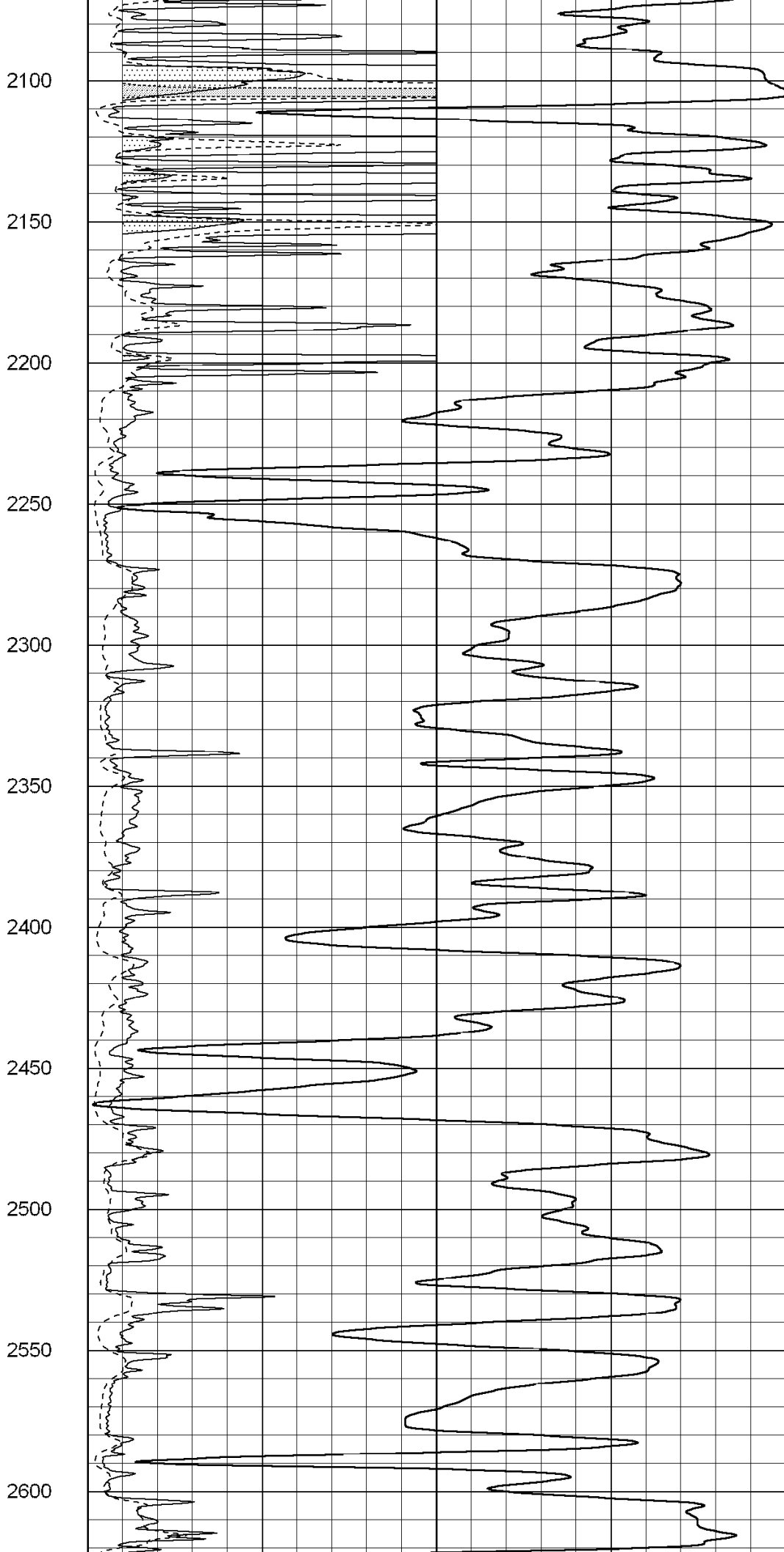
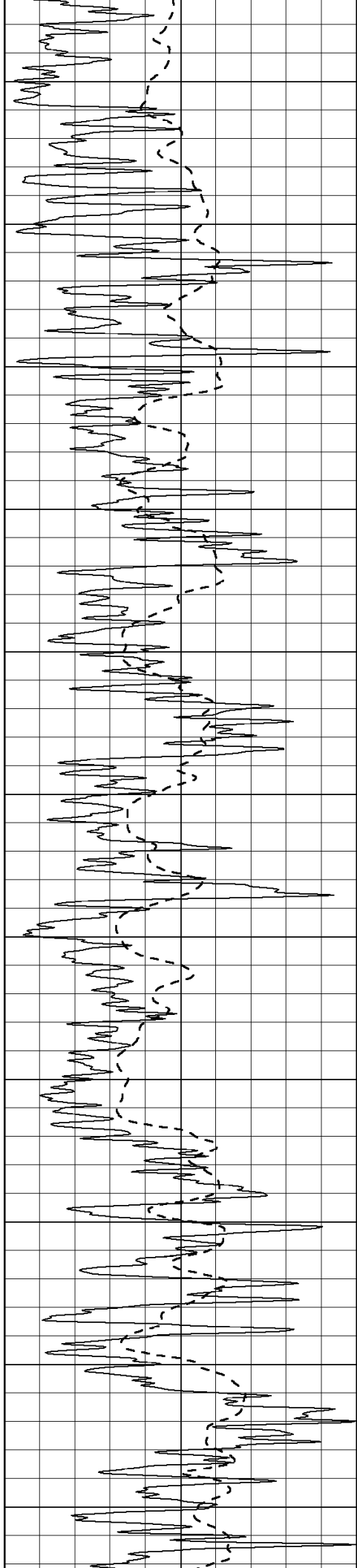
1900

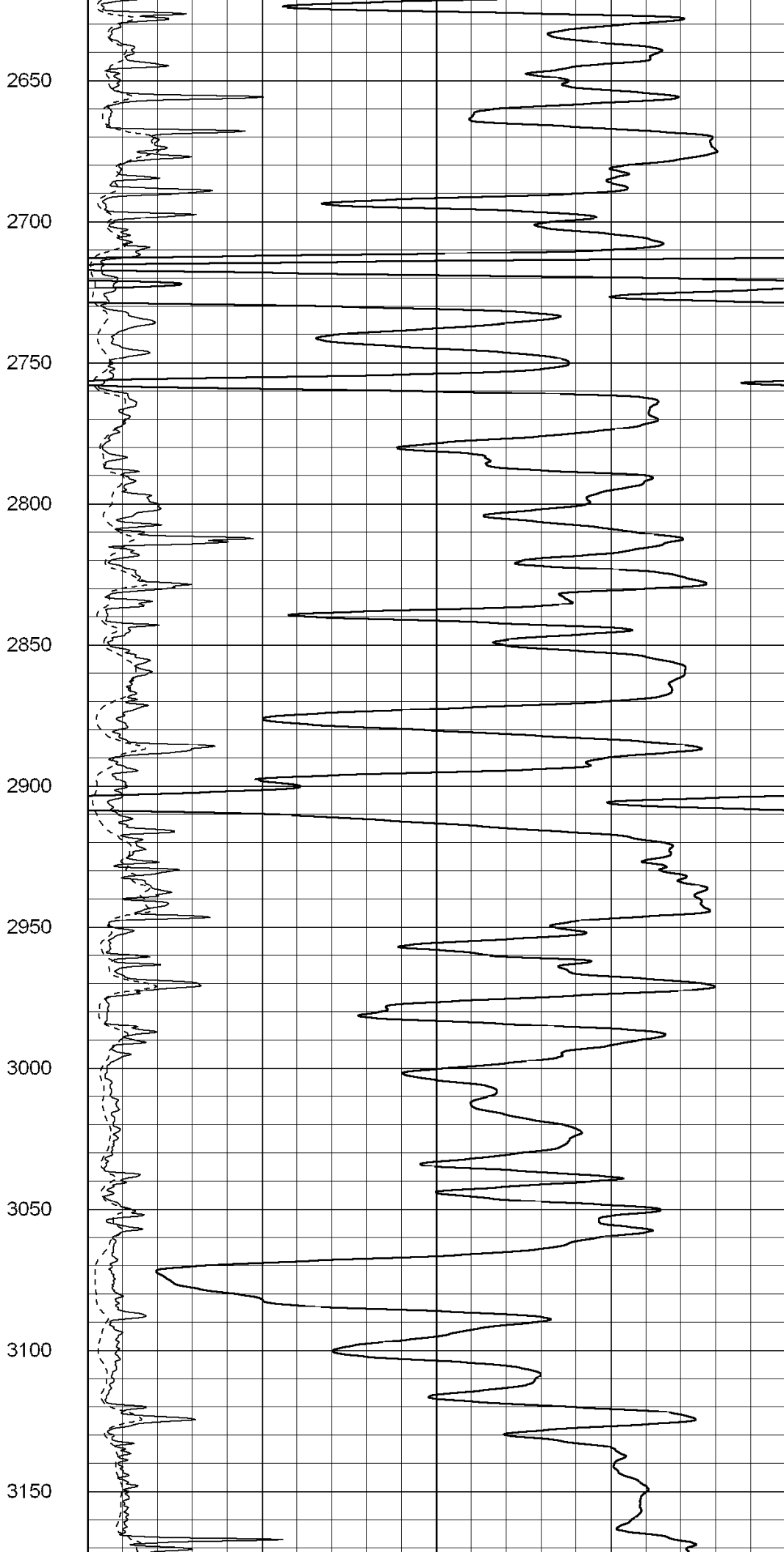
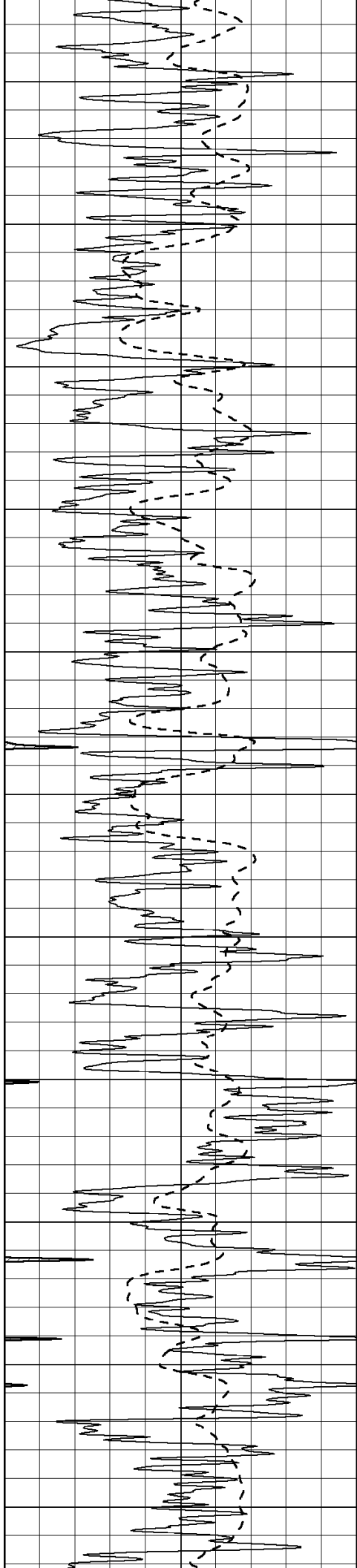
1950

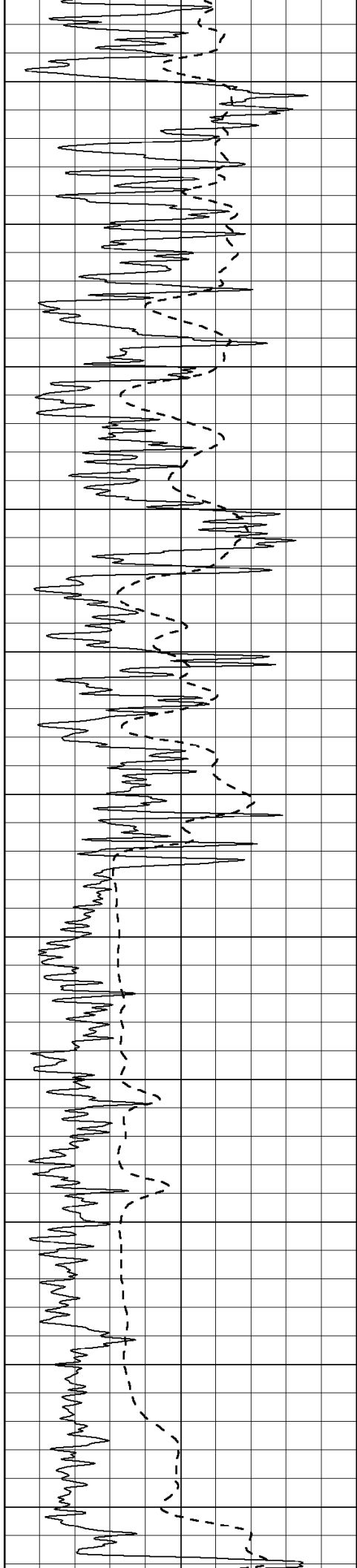
2000

2050









3200

3250

3300

3350

3400

3450

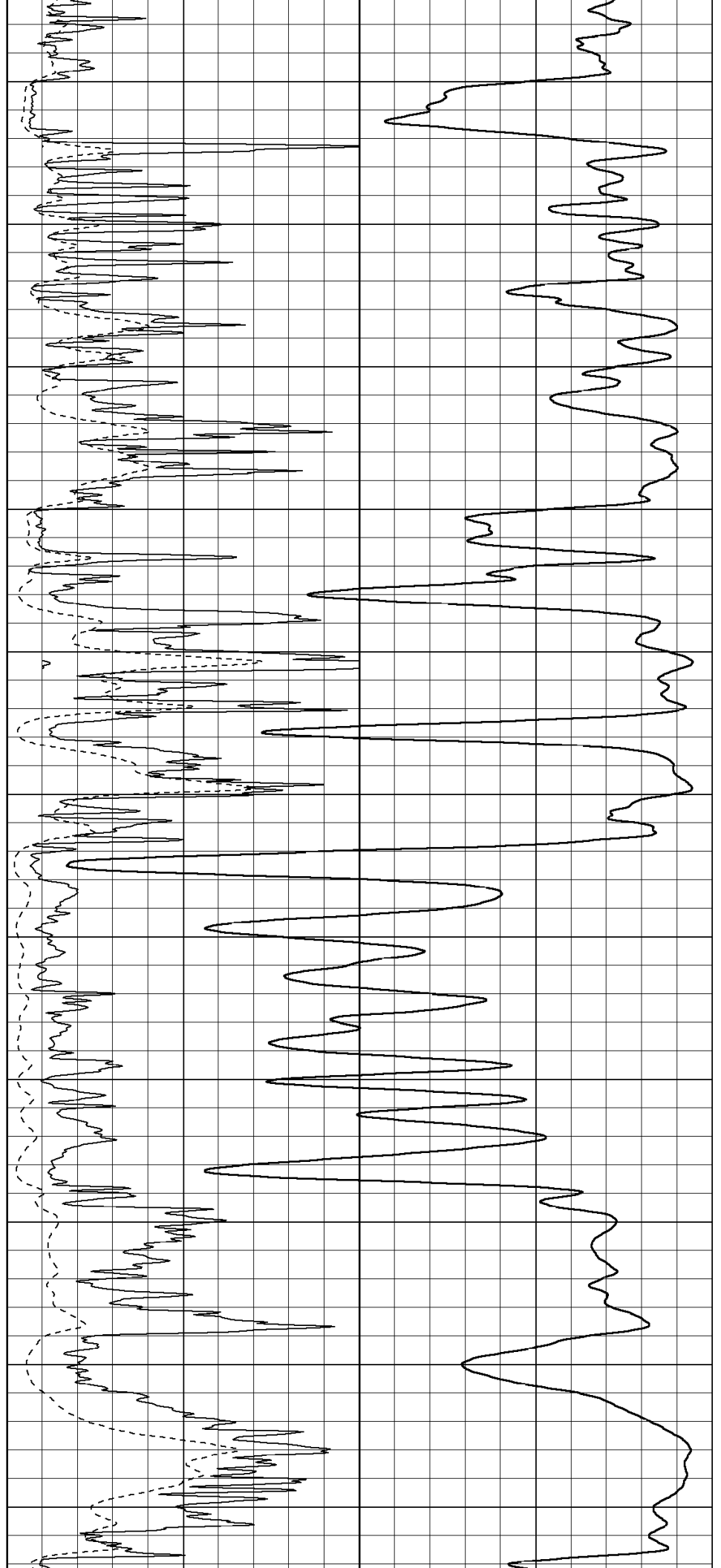
3500

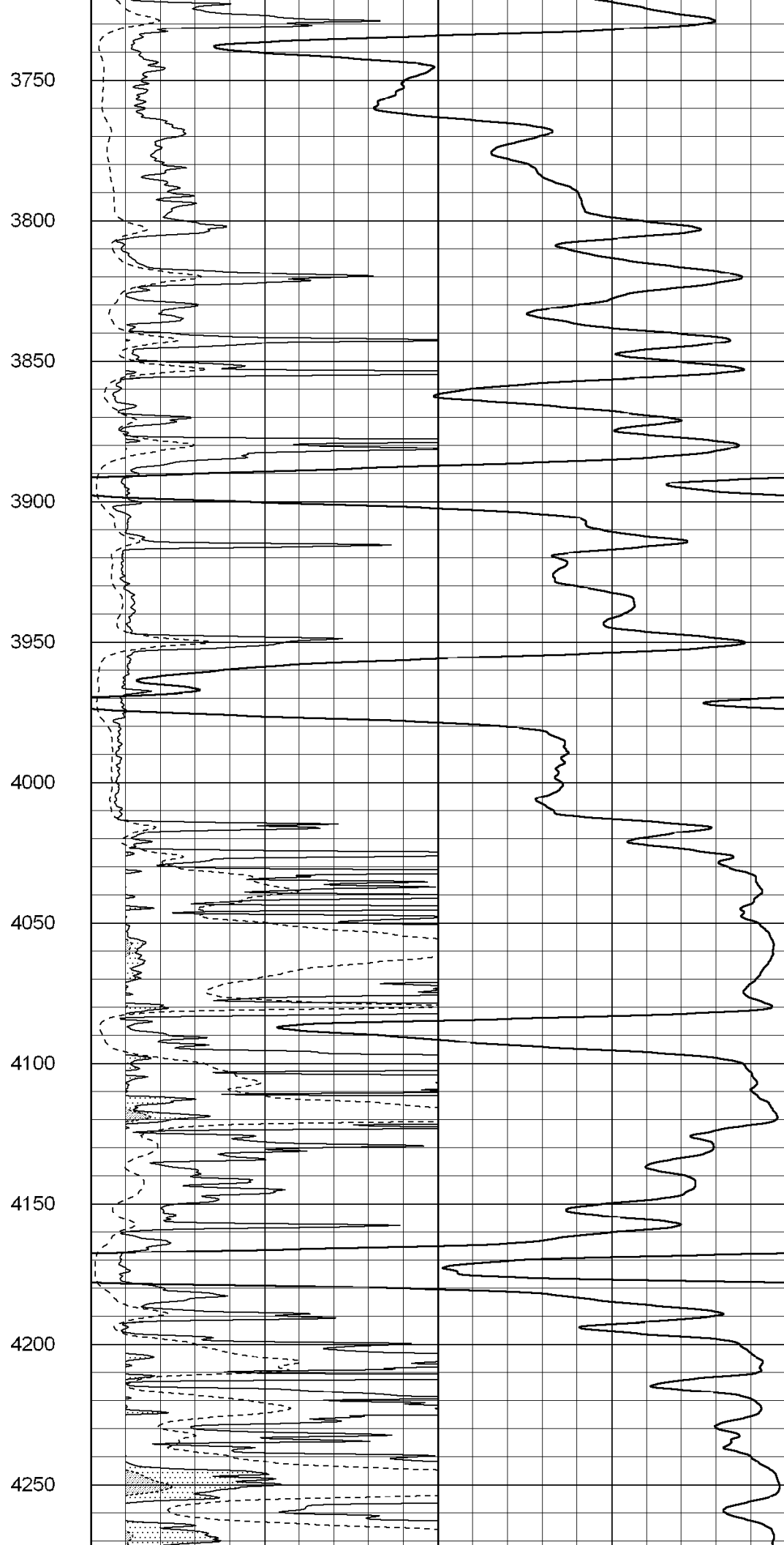
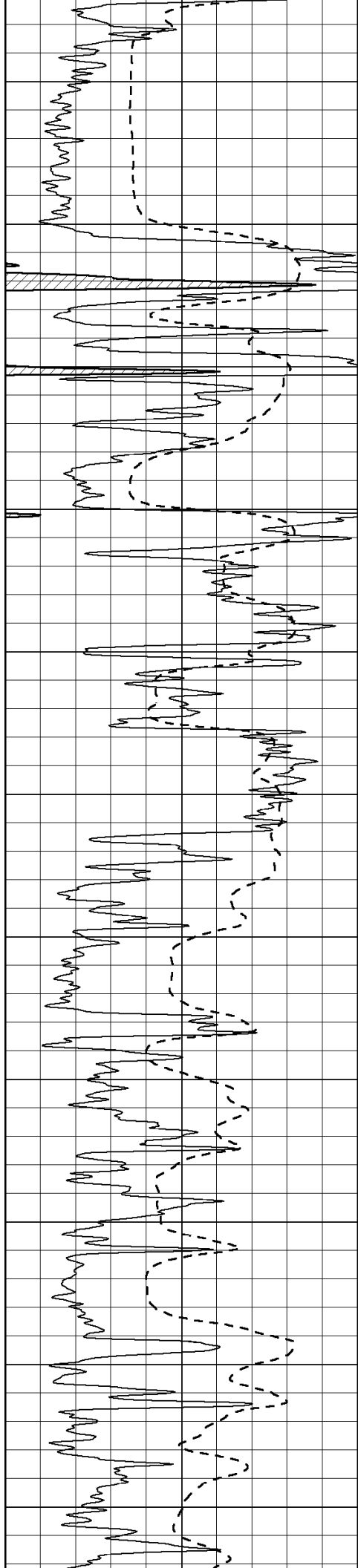
3550

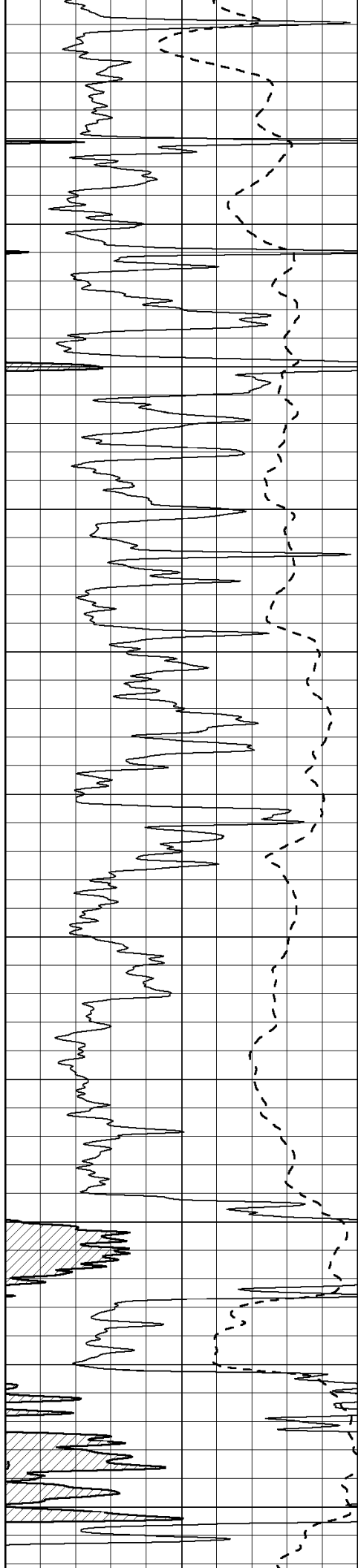
3600

3650

3700







4300

4350

4400

4450

4500

4550

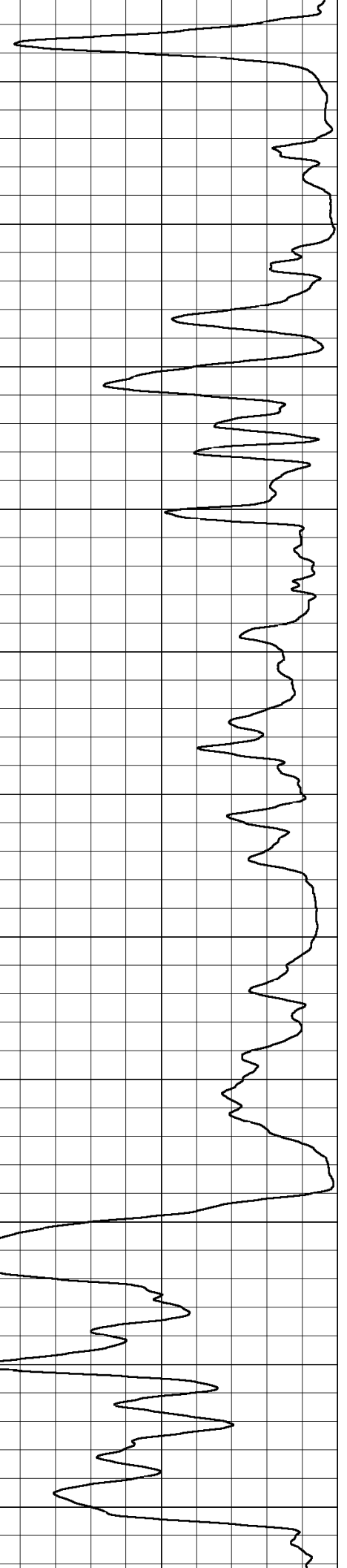
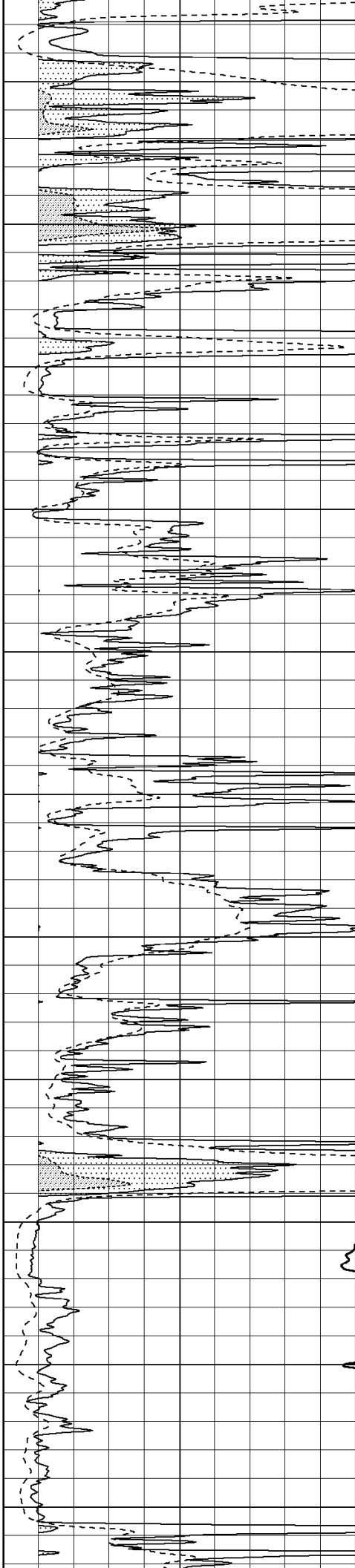
4600

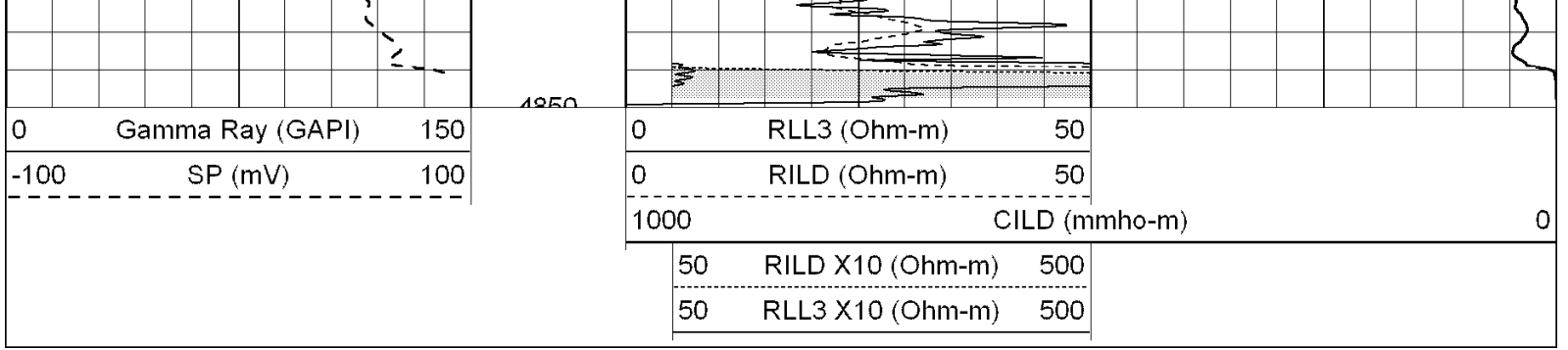
4650

4700

4750

4800



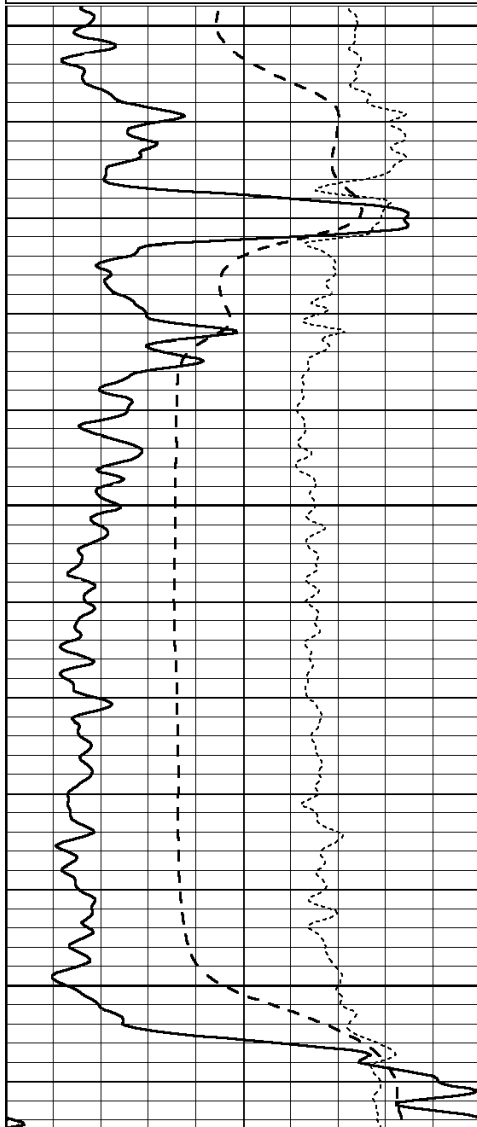


SUPERIOR
Hays,
Kansas

MAIN SECTION

Database File: 004715pe.db
 Dataset Pathname: pass3.6
 Presentation Format: dil
 Dataset Creation: Fri Feb 05 07:31:05 2010 by Calc Open-Cased 060407
 Charted by: Depth in Feet scaled 1:240

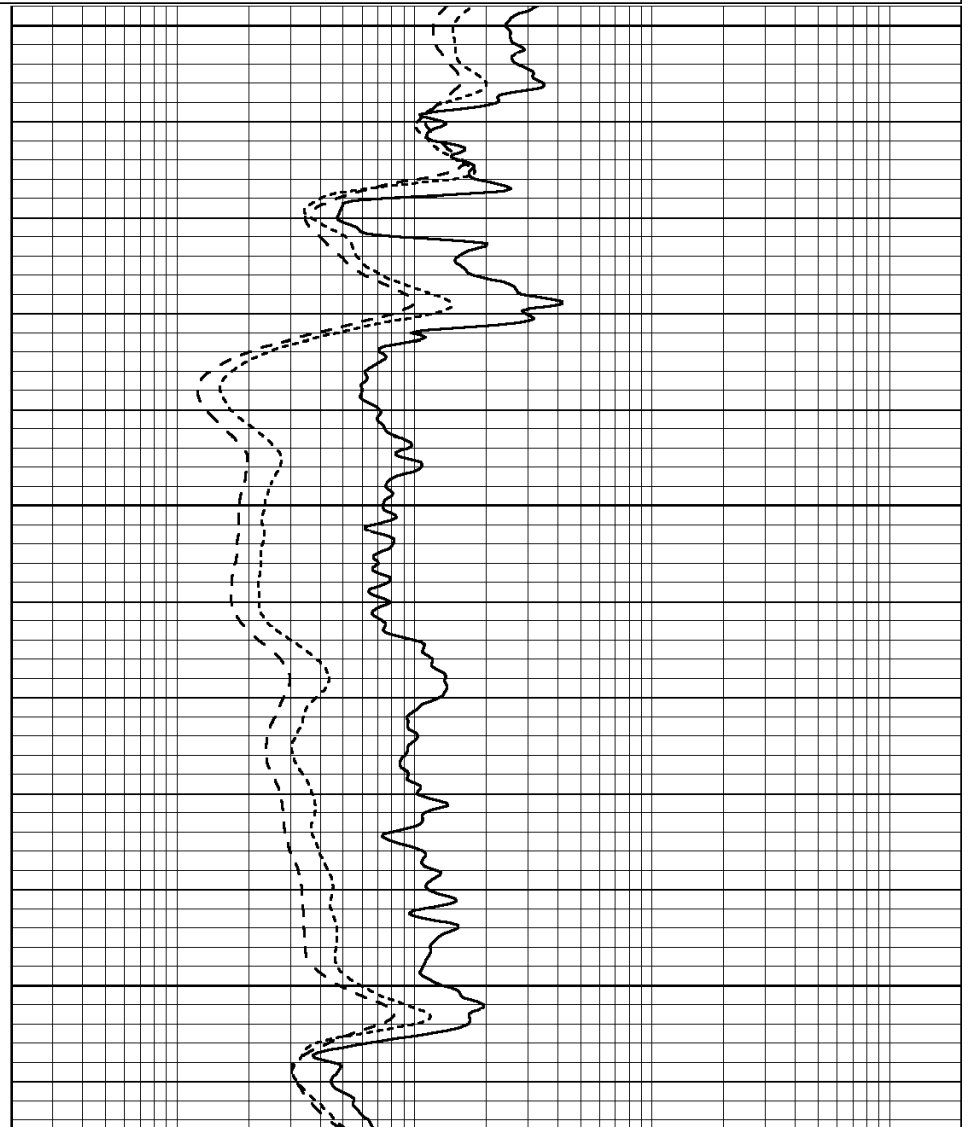
0	GAMMA RAY (GAPI)	150	0.2	SHALLOW GUARD (Ohm-m)	2000
-100	SP (mV)	100	0.2	DEEP INDUCTION (Ohm-m)	2000
-250	Rxo/Rt	50	0.2	MEDIUM INDUCTION (Ohm-m)	2000

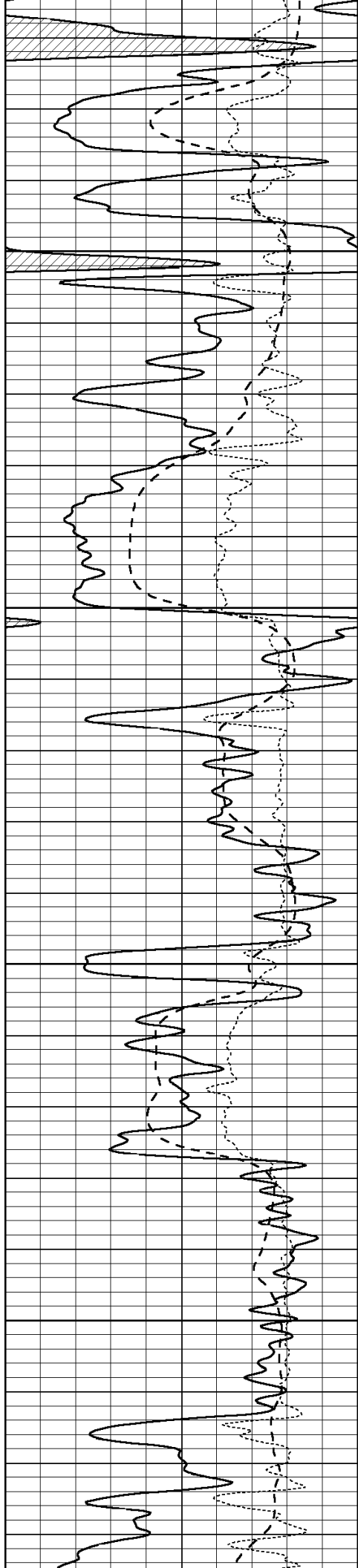


3700

3750

3800



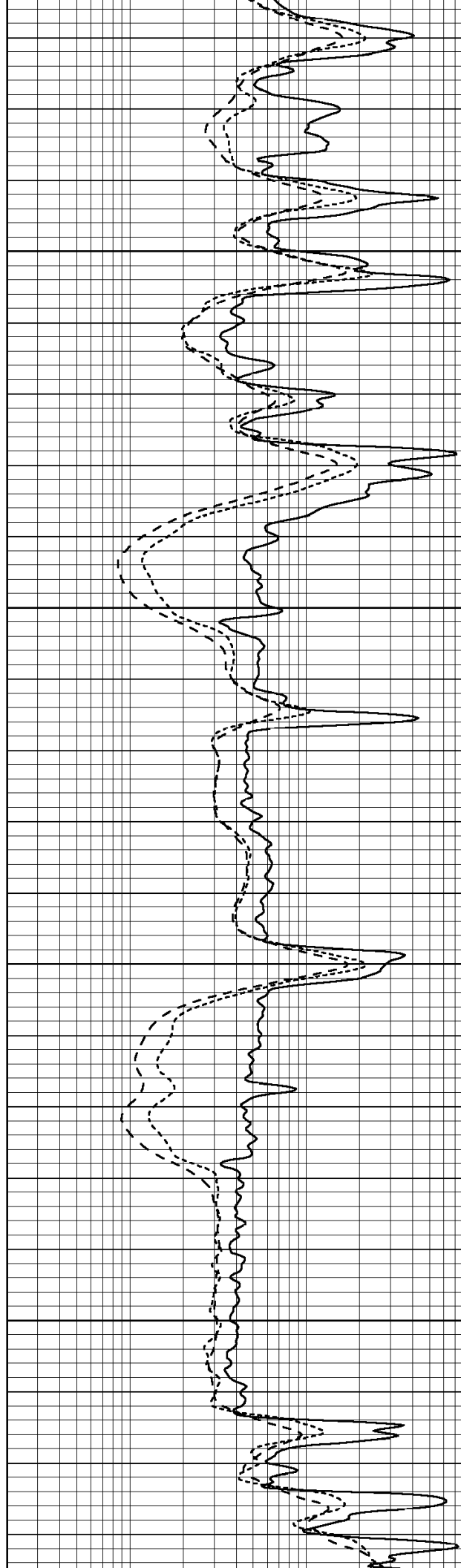


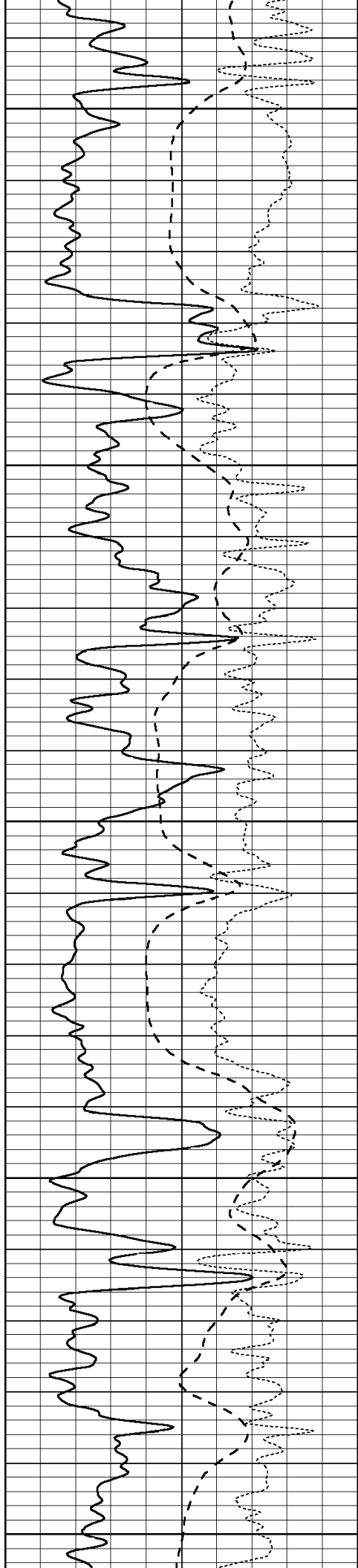
3850

3900

3950

4000





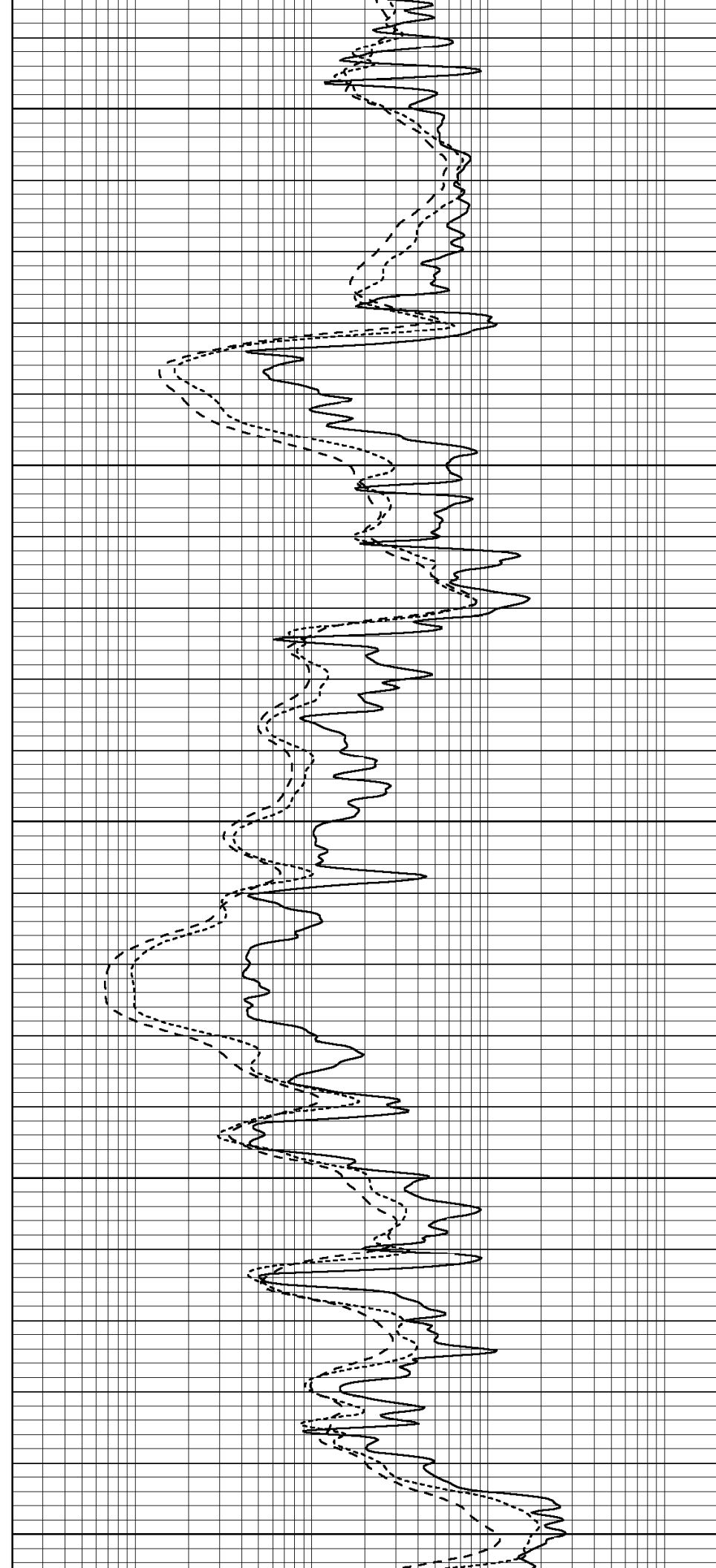
4050

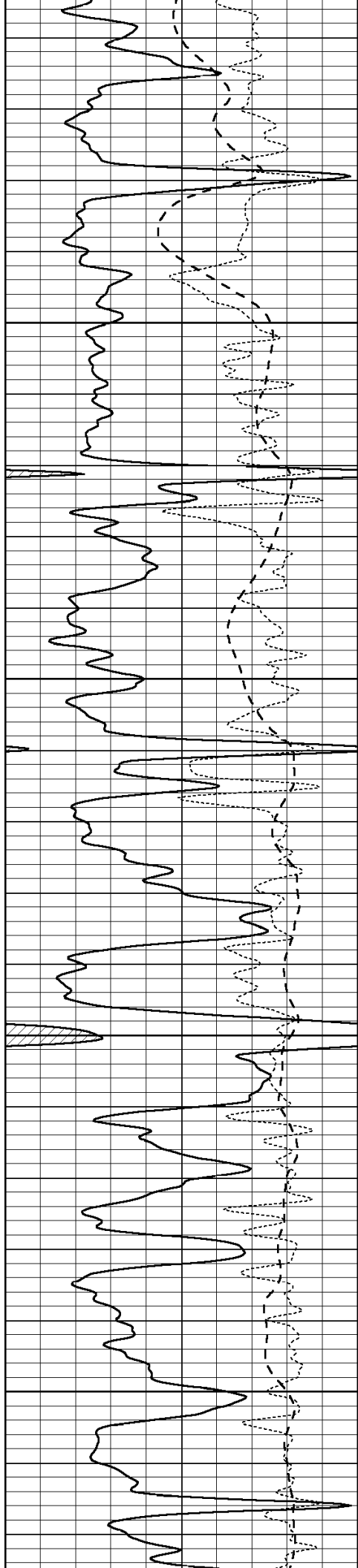
4100

4150

4200

4250



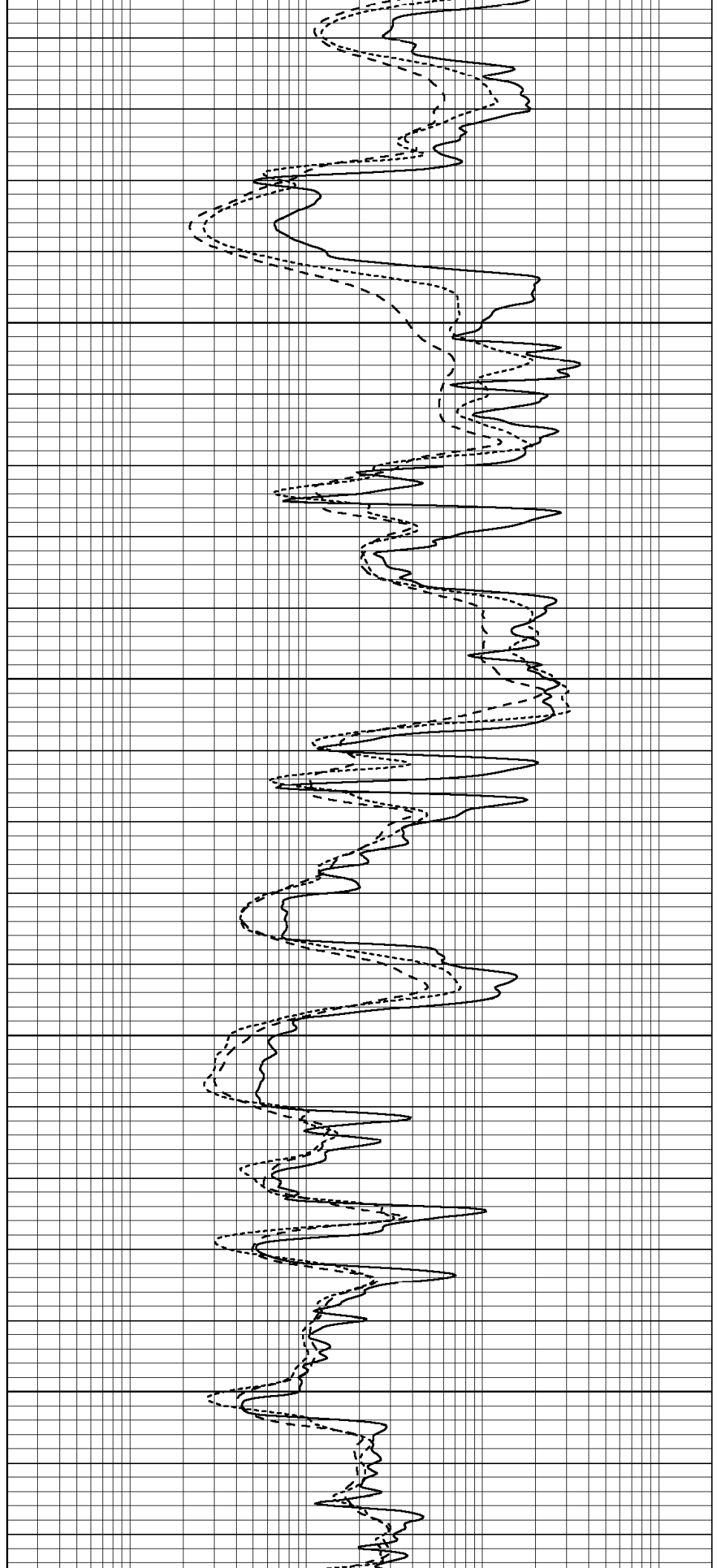


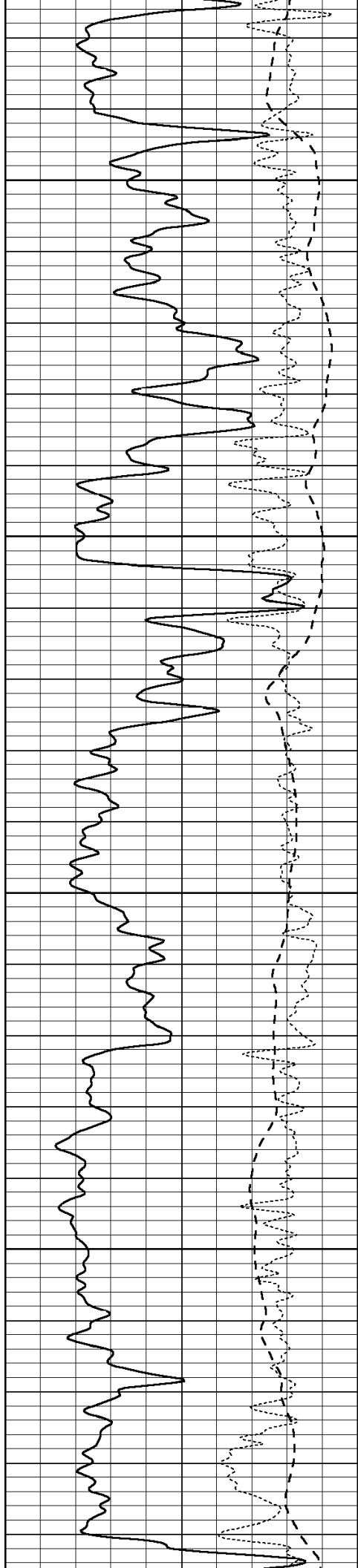
4300

4350

4400

4450



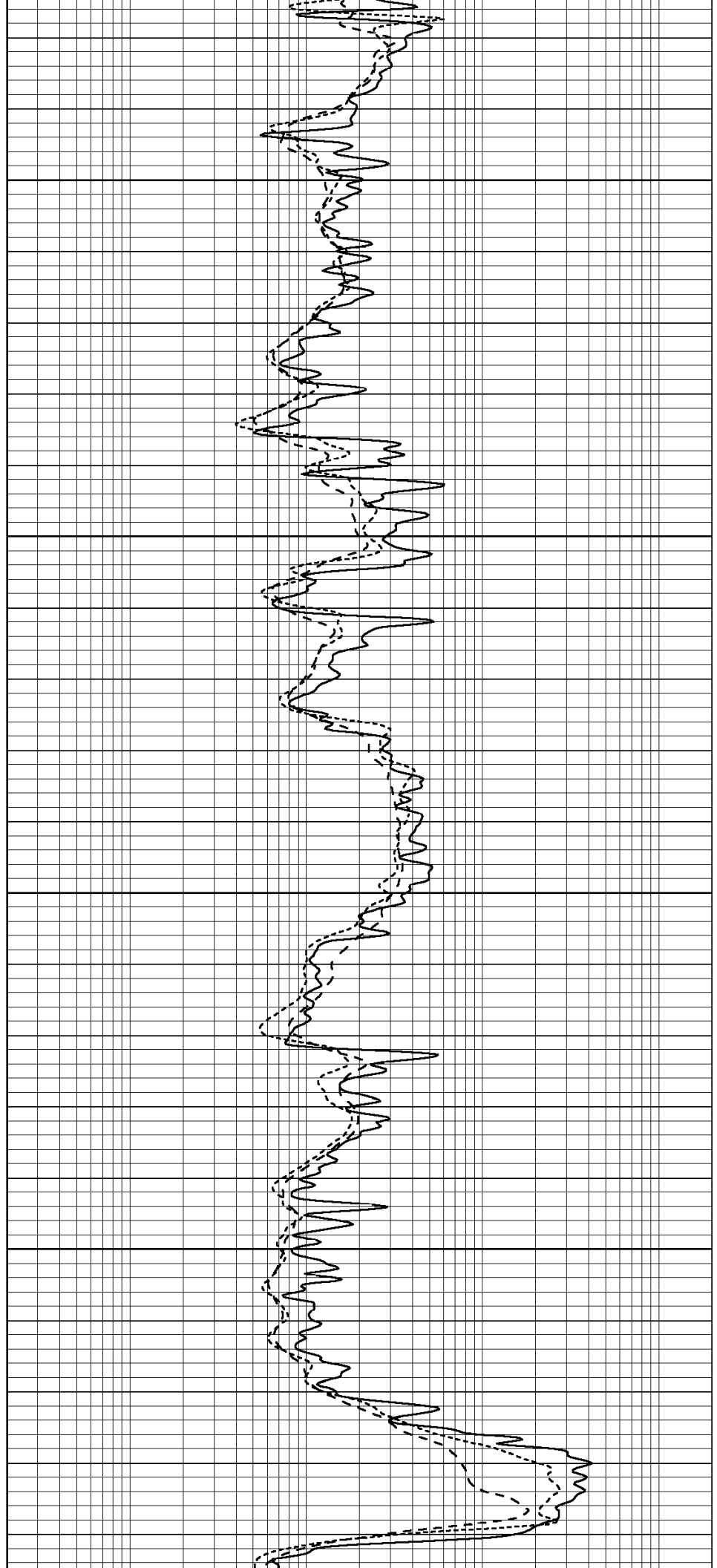


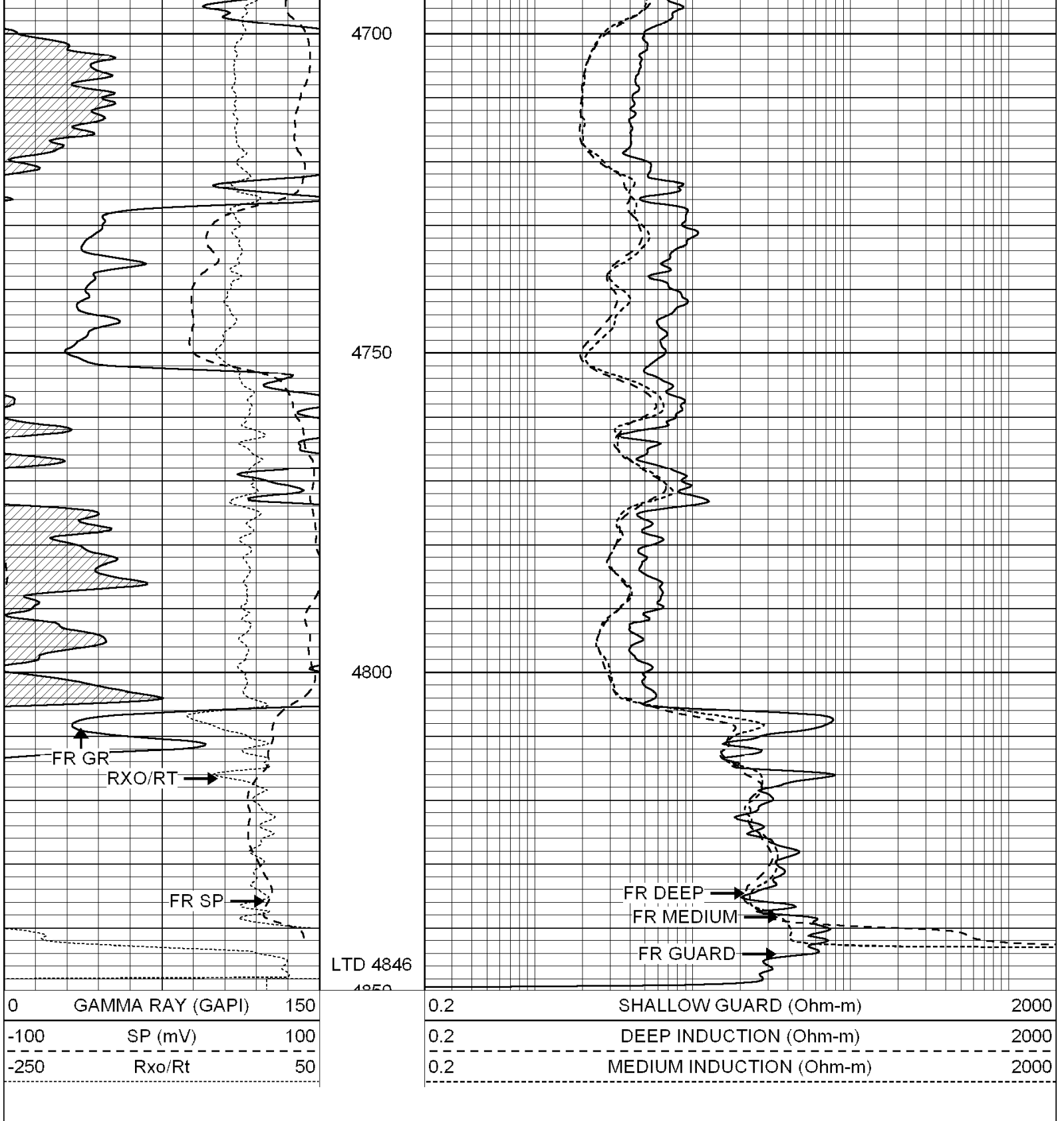
4500

4550

4600

4650





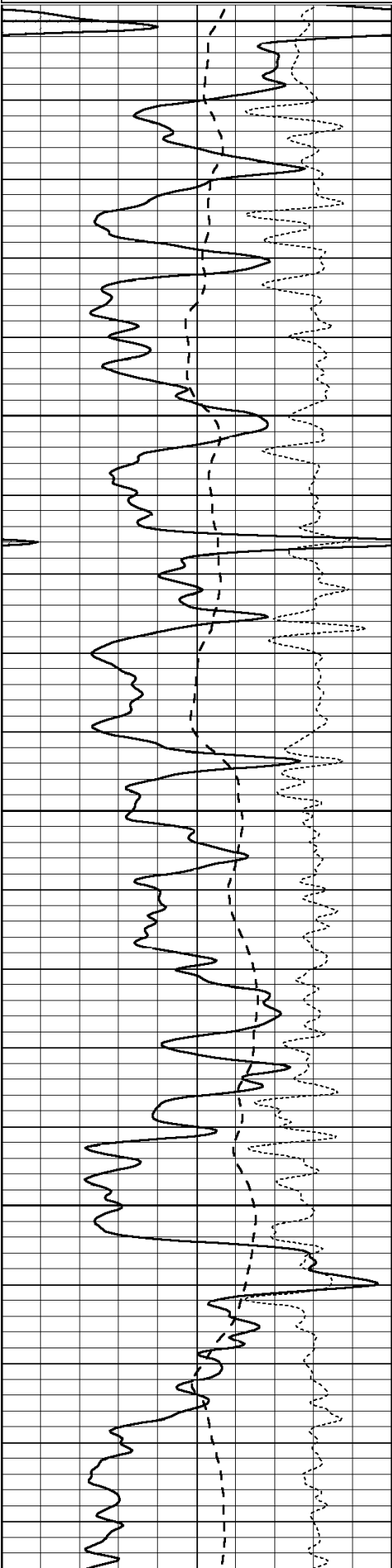
SUPERIOR
Hays,
Kansas

REPEAT SECTION

Database File: 004715pe.db
 Dataset Pathname: pass2.11
 Presentation Format: dil
 Dataset Creation: Fri Feb 05 06:46:01 2010 by Calc Open-Cased 060407
 Charted by: Depth in Feet scaled 1:240

0	GAMMA RAY (GAPI)	150
-100	SP (mV)	100
-250	Rxo/Rt	50

0.2	SHALLOW GUARD (Ohm-m)	2000
0.2	DEEP INDUCTION (Ohm-m)	2000
0.2	MEDIUM INDUCTION (Ohm-m)	2000

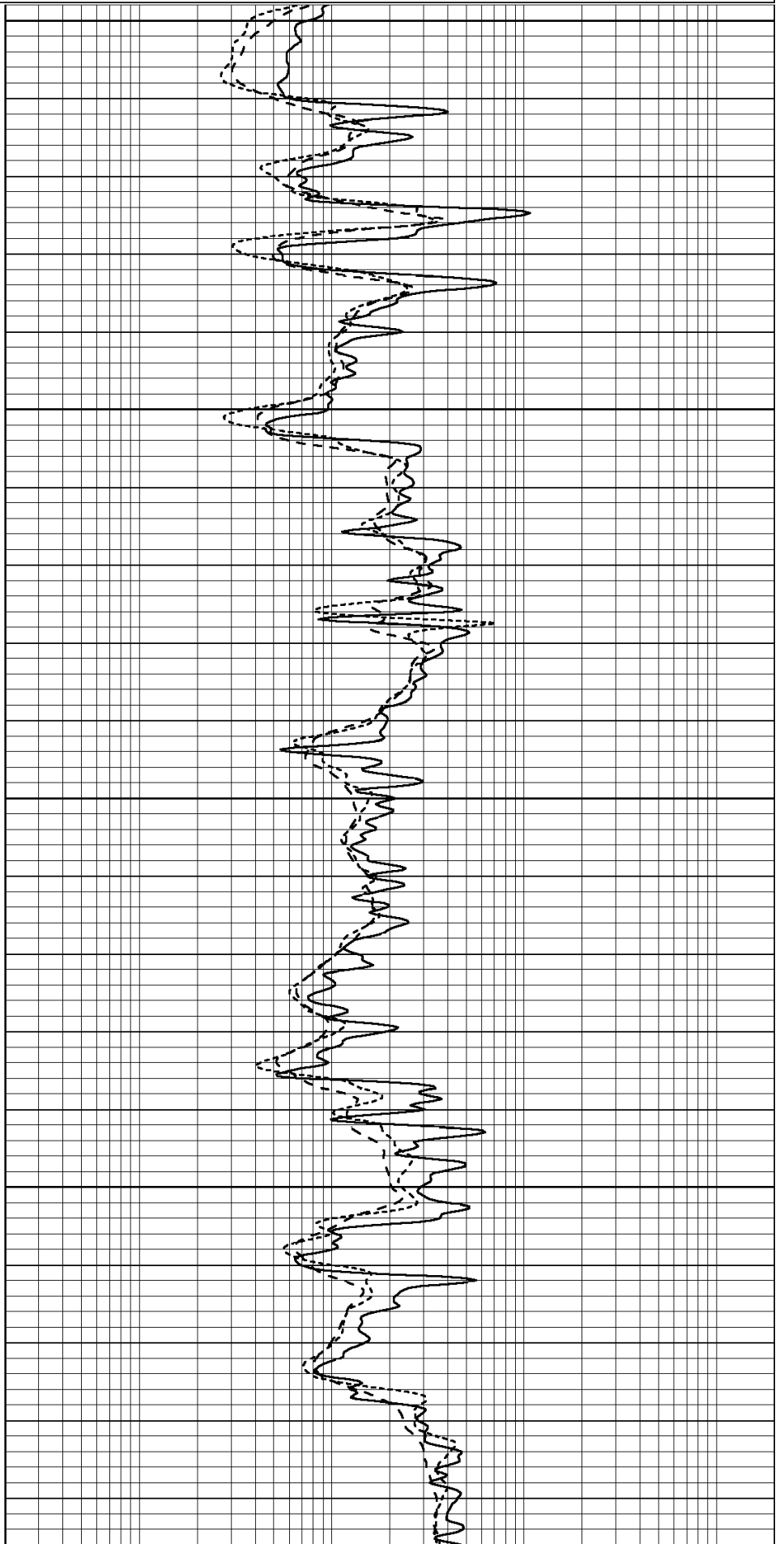


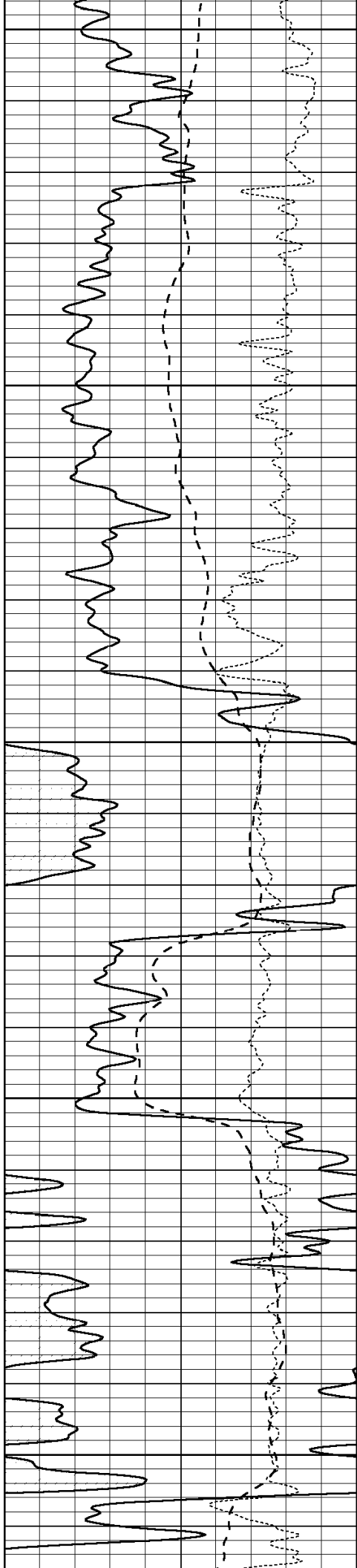
4400

4450

4500

4550





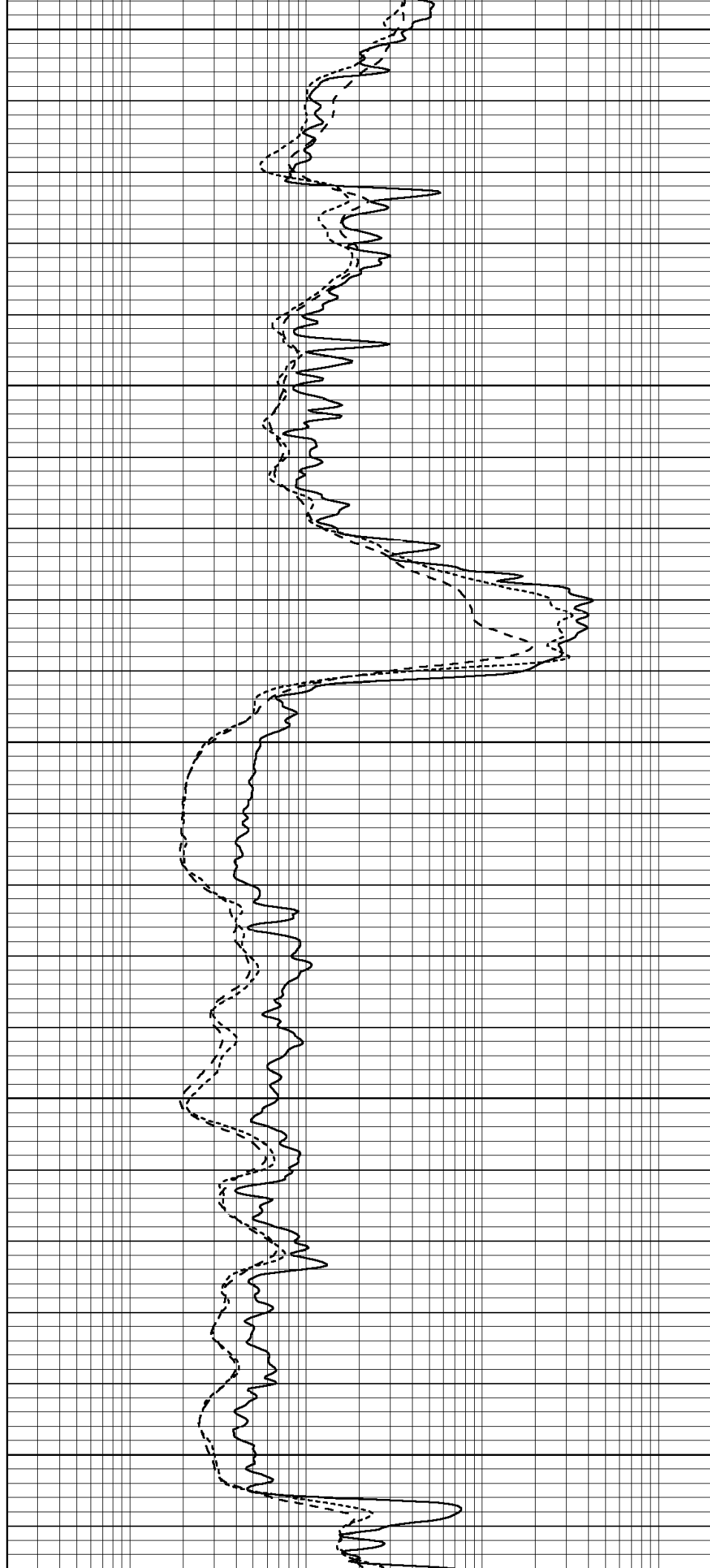
4600

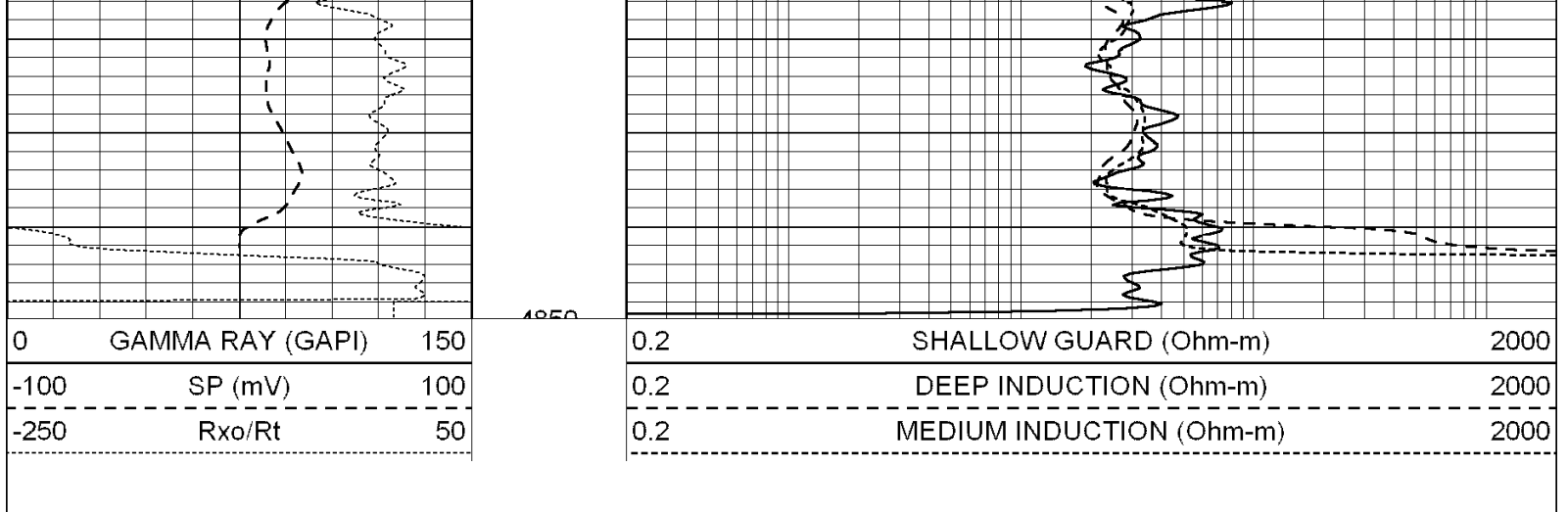
4650

4700

4750

4800





Calibration Report

Database File: 004715pe.db
 Dataset Pathname: pass3.6
 Dataset Creation: Fri Feb 05 07:31:05 2010 by Calc Open-Cased 060407

Dual Induction Calibration Report

Serial-Model: DIL3-GEAR
 Performed: Fri Feb 05 05:38:36 2010

Loop:	Readings				References			Results	
	Air	Loop			Air	Loop		m	b
Deep	0.011	0.656	V	0.000	400.000	mmho-m	640.000	0.000	
Medium	0.013	0.740	V	0.000	462.500	mmho-m	700.000	-11.000	
Internal:	Zero	Cal		Zero	Cal		m	b	
Deep	0.002	0.645	V	0.000	400.000	mmho-m	622.059	-1.071	
Medium	0.007	0.740	V	0.000	462.500	mmho-m	631.393	-4.555	

Litho Density Calibration Report
 Serial: 003N Model: PRB
 Performed Tue Sep 08 14:14:44 2009

Litho Density Calibration

	Background	Magnesium	Aluminum	Sandstone	
Window 1	2042.6	12312.8	4225.8	13758.4	cps
Window 2	1855.8	10134.7	3624.2	11113.1	cps
Window 3	1639.4	6760.2	2716.3	7260.3	cps
Window 4	466.4	469.2	466.1	476.5	cps
Long Space	0.0	8278.9	1768.4	9257.4	cps
Short Space	2.2	2377.3	1544.1	2574.2	cps
Rho		1.7100	2.5900	1.3800	g/cc
Pe			2.5700	1.5500	

Rib Angle : 44.4 Rib Slope : 0.979 Density/Spine Ratio : 0.549
 Spine Angle : 74.4 Spine Slope : 3.577 Spine Intercept : -18.8

Caliper

	Readings	Reference	
Low Ref	2.2	6.4	
High Ref	4.6	14.0	
	Gain: 3.2		Offset: -0.4

Compensated Neutron Calibration Report

Serial Number: NEU_3I
 Tool Model: G

CALIBRATION

Detector	Readings	Target	Normalization
Short Space	997.00 cps	1000.00 cps	1.0000
Long Space	986.00 cps	1000.00 cps	1.0000

Gamma Ray Calibration Report

Serial Number: GR3
 Tool Model: OPEN
 Performed: Fri Feb 05 04:38:57 2010

Calibrator Value: 200.0 GAPI

Background Reading: 3.0 cps
 Calibrator Reading: 186.0 cps

Sensitivity: 0.6500 GAPI/cps