



**Borehole Compensated  
Sonic Log**

**DIGITAL LOG (785) 625-3858**

API No. 15-109-20,872-00-00	Company <b>Brito Oil Company, Inc.</b>	Well <b>Fairleigh No. 1-7</b>	Field <b>Wildcat</b>	County <b>Logan</b>	State <b>Kansas</b>
Location <b>990' FSL &amp; 330' FWL</b>	Sec: <b>7</b>	Twp: <b>15S</b>	Rge: <b>32W</b>	Other Services CNL/CDL MEL/DIL	
Permanent Datum Log Measured From Drilling Measured From	Ground Level Kelly Bushing Kelly Bushing	Elevation <b>2779</b>	<b>5</b> Ft. Above Perm. Datum	Elevation K.B. <b>2784</b> D.F. <b>2779</b> G.L. <b>2779</b>	

Date	01/29/2010
Run Number	Two
Type Log	BHC Sonic
Depth Driller	4610
Depth Logger	4610
Bottom Logged Interval	4599
Top Logged Interval	200
Type Fluid In Hole	Chemical
Salinity, PPM CL	1,500
Density	9.3
Level	Full
Max. Rec. Temp. F	124
Operating Rig Time	5 Hours
Equipment -- Location	10 Hays
Recorded By	Jason Wallbrock
Witnessed By	Jeff Christian

Run No	Bit	Borehole Record		Casing Record	
		From	To	From	To
1	12.25	00	209	8.625	24#
2	7.875	209	4610		

<<< Fold Here >>>

All interpretations are opinions based on inferences from electrical or other measurements and we cannot and do not guarantee the accuracy or correctness of any interpretation, and we shall not, except in the case of gross or willful negligence on our part, be liable or responsible for any loss, costs, damages, or expenses incurred or sustained by anyone resulting from any interpretation made by any of our officers, agents or employees. These interpretations are also subject to our general terms and conditions set out in our current Price Schedule.

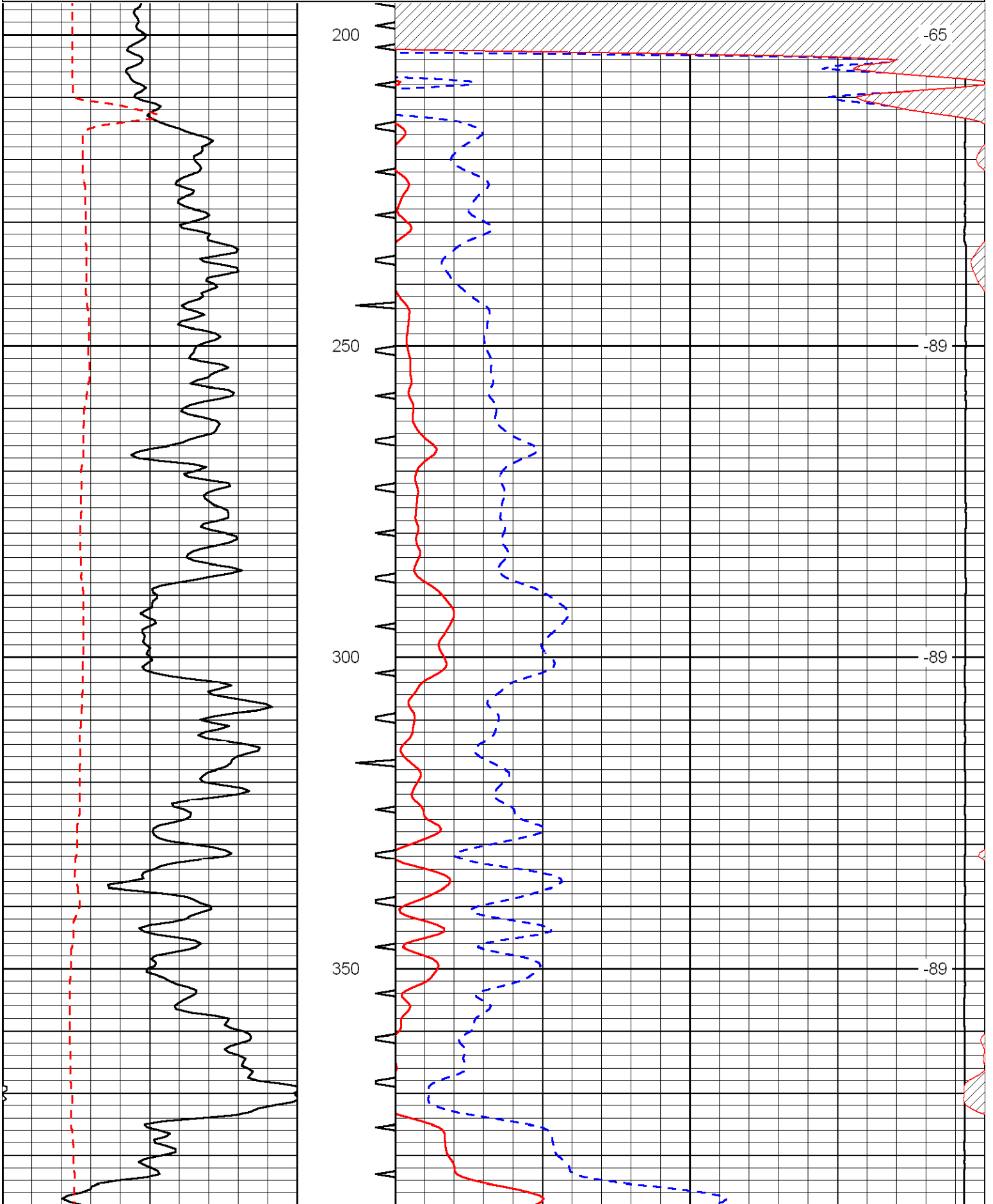
**Comments**

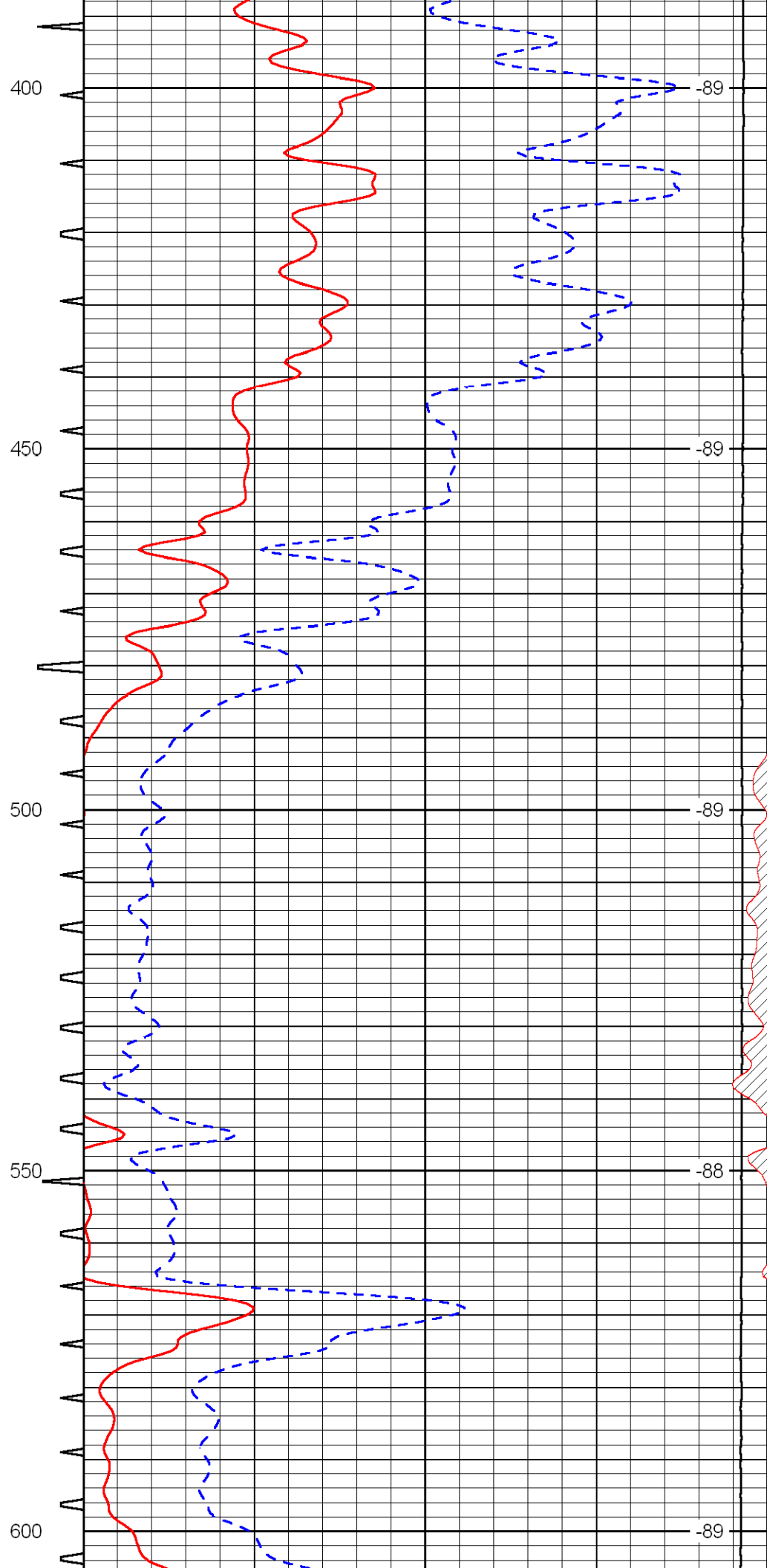
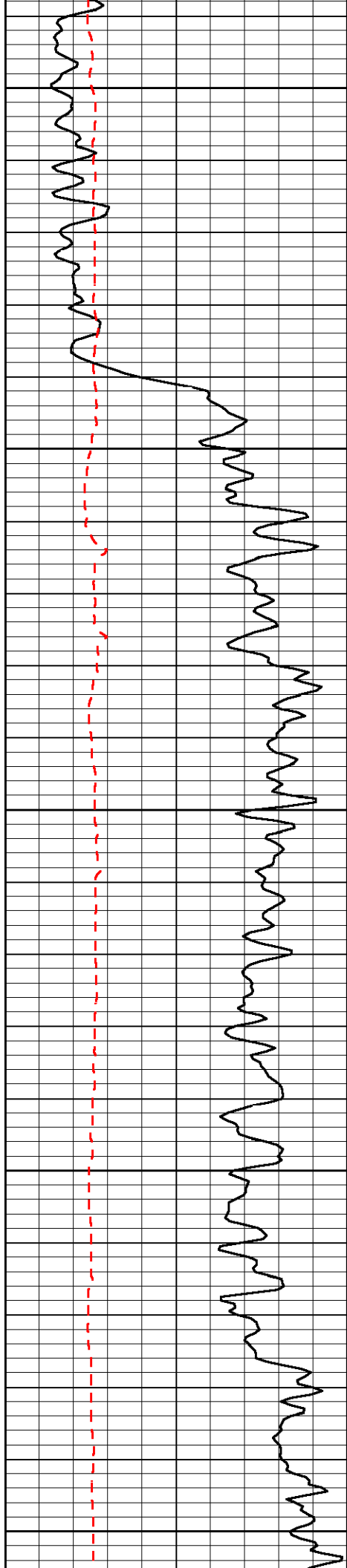
Thank you for using Log-Tech, Inc.  
(785) 625-3858

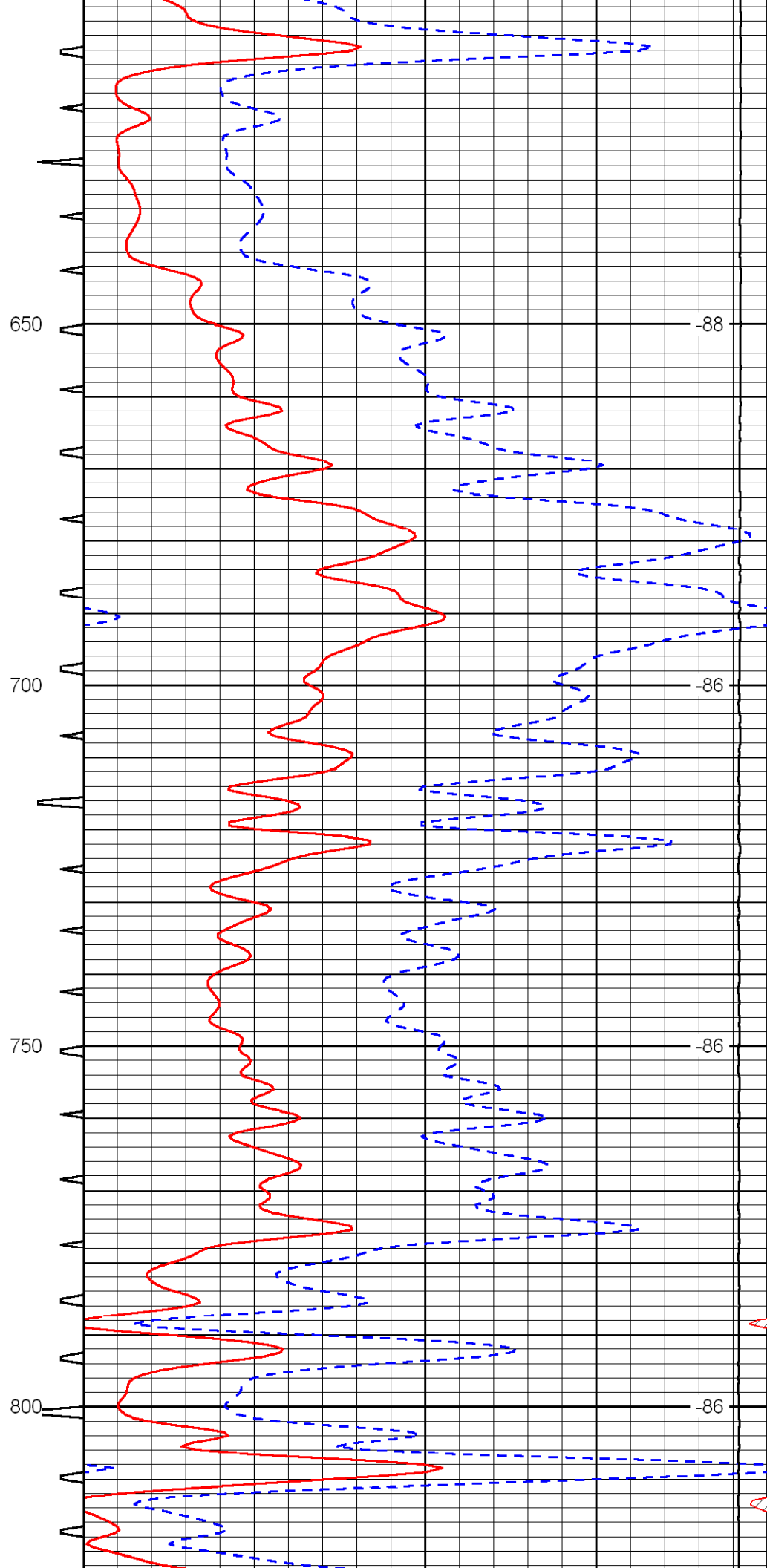
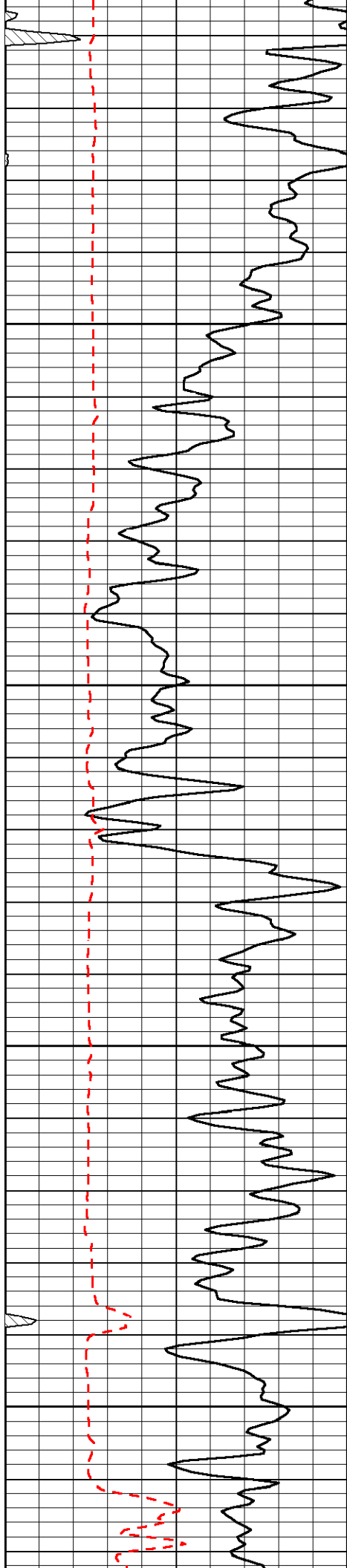
Oakley 24S to Gold rd, 4 W, 2 S, E Into

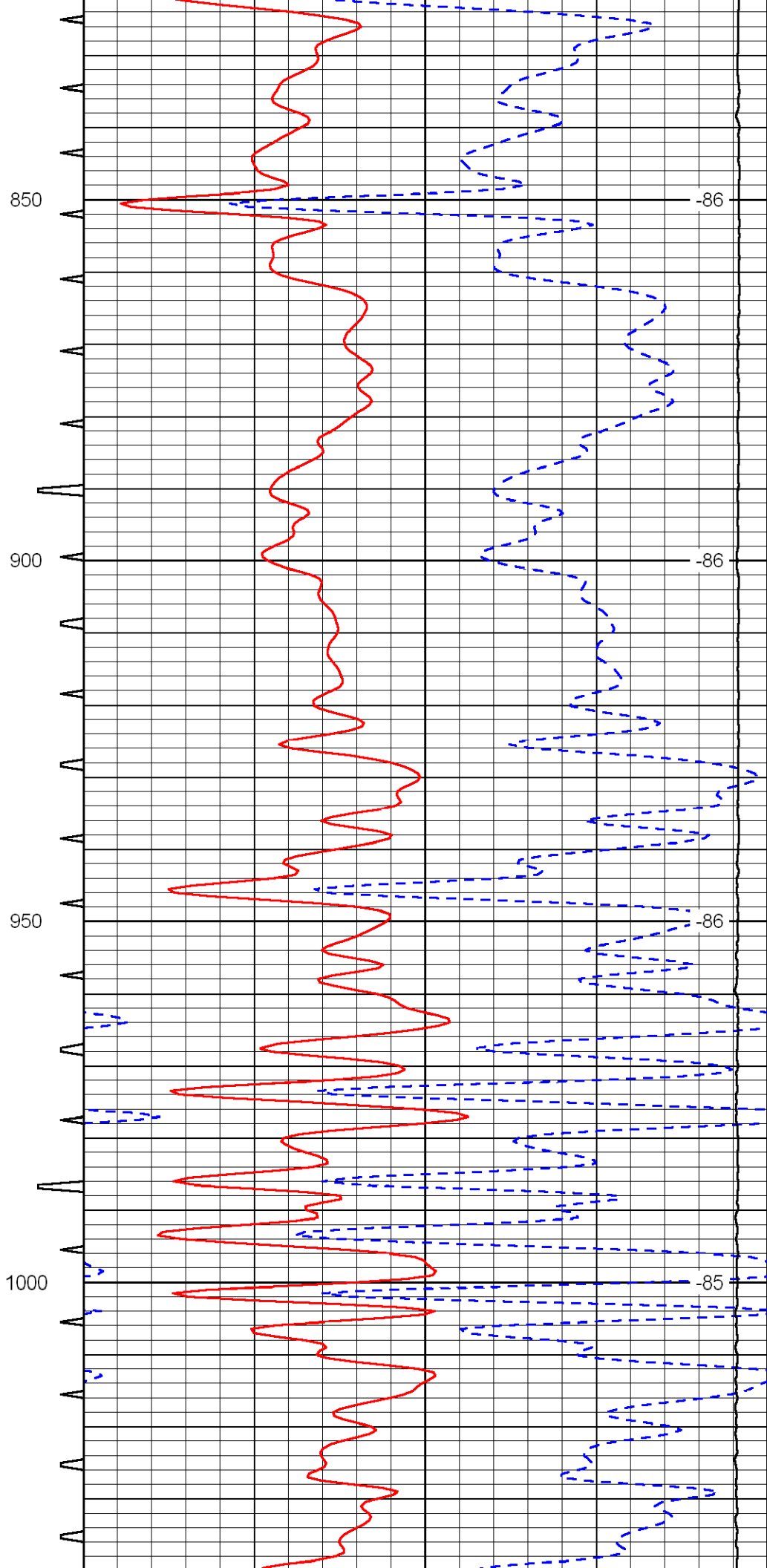
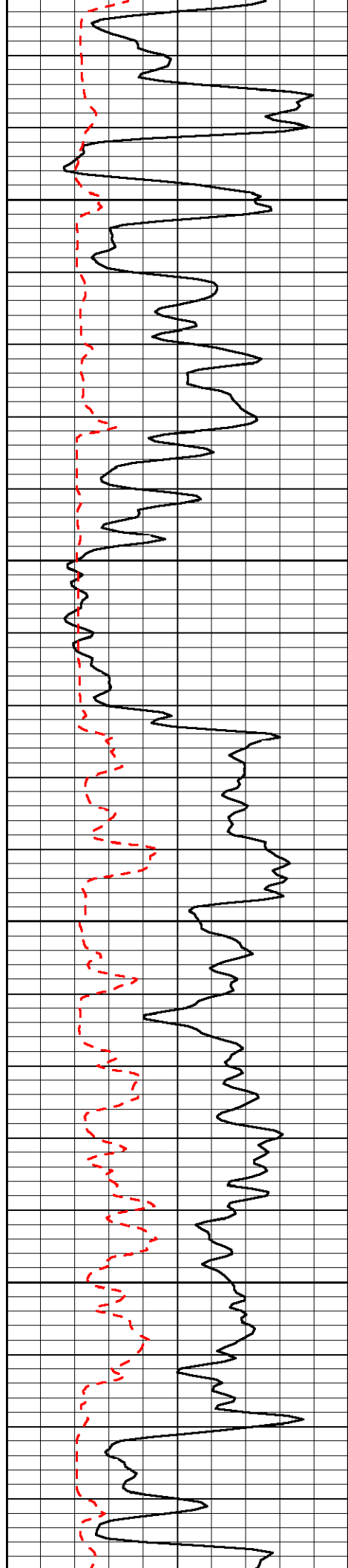
Database File: c:\warrior\data\brito oil\_fairleigh no. 1-7\britohd.db  
 Dataset Pathname: dil/brito2in  
 Presentation Format: sonic  
 Dataset Creation: Fri Jan 29 10:11:19 2010  
 Charted by: Depth in Feet scaled 1:240

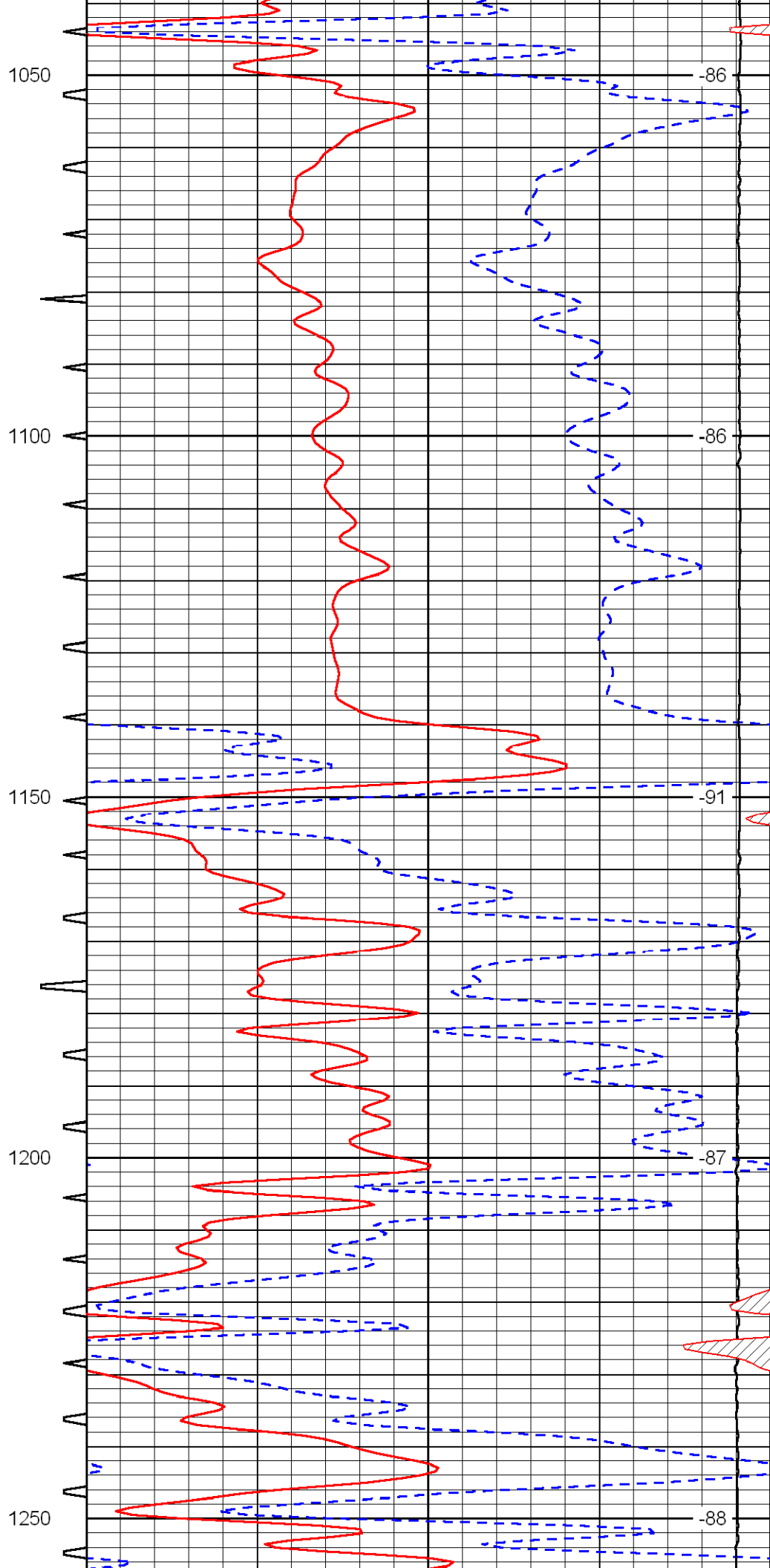
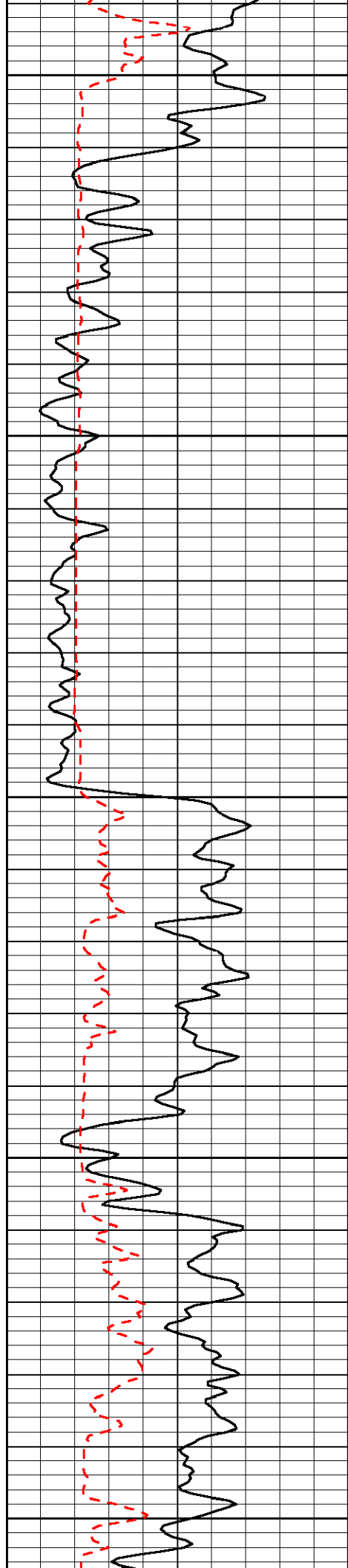
0	Gamma Ray	150	Sonic Int	140	Delta Time (usec/ft) (usec/ft)	40
150	Gamma Ray	300	5 (msec)	0	SPOR (pu)	-10
6	Caliper (in)	16		15000	LTEN (lb) (lb)	0
						LSPD (ft/min)

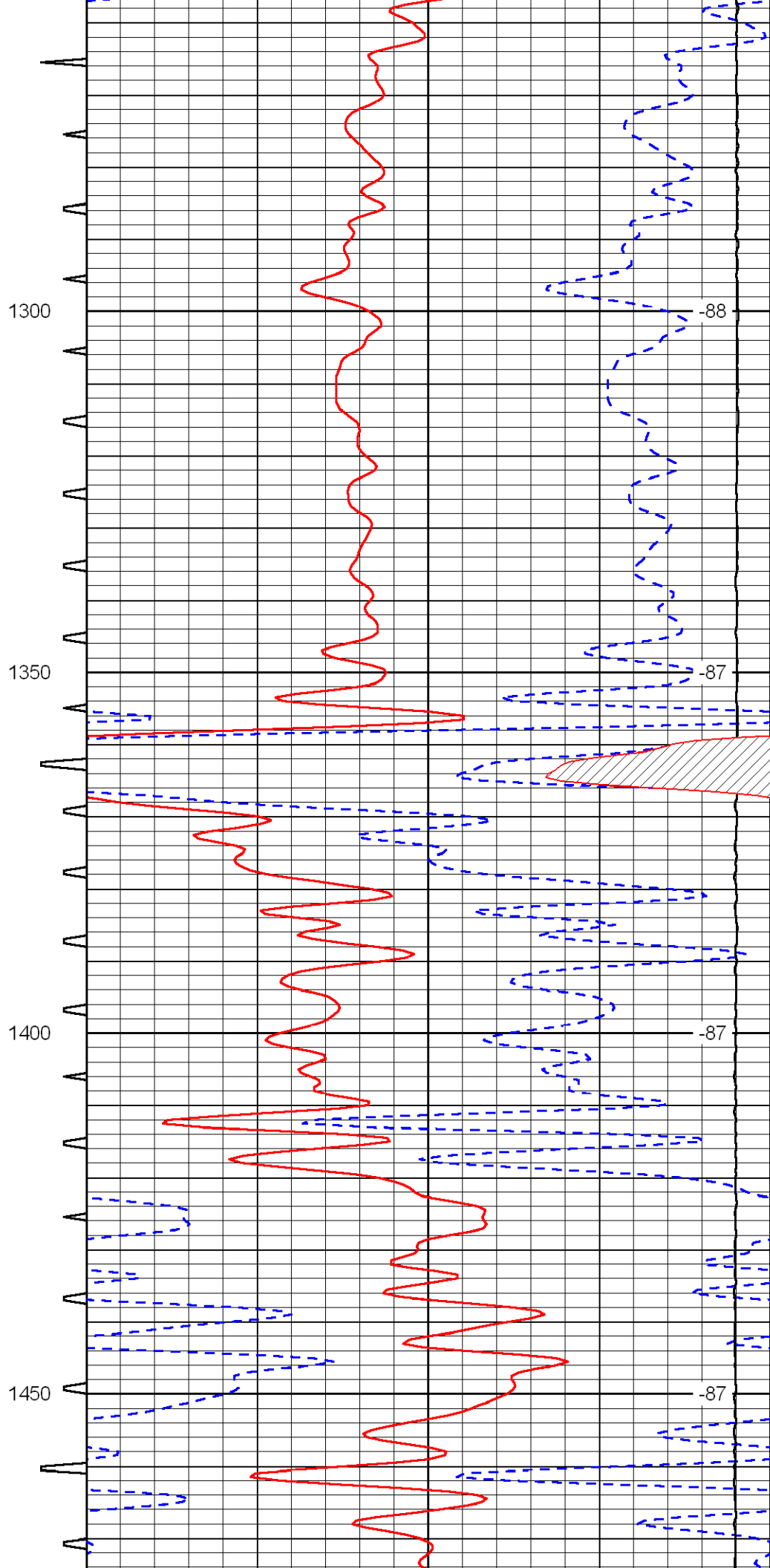
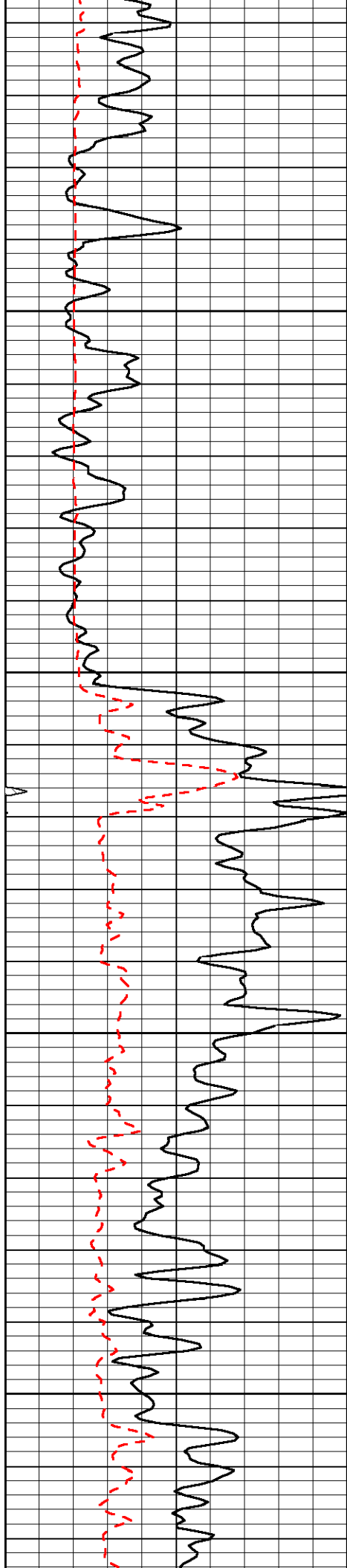


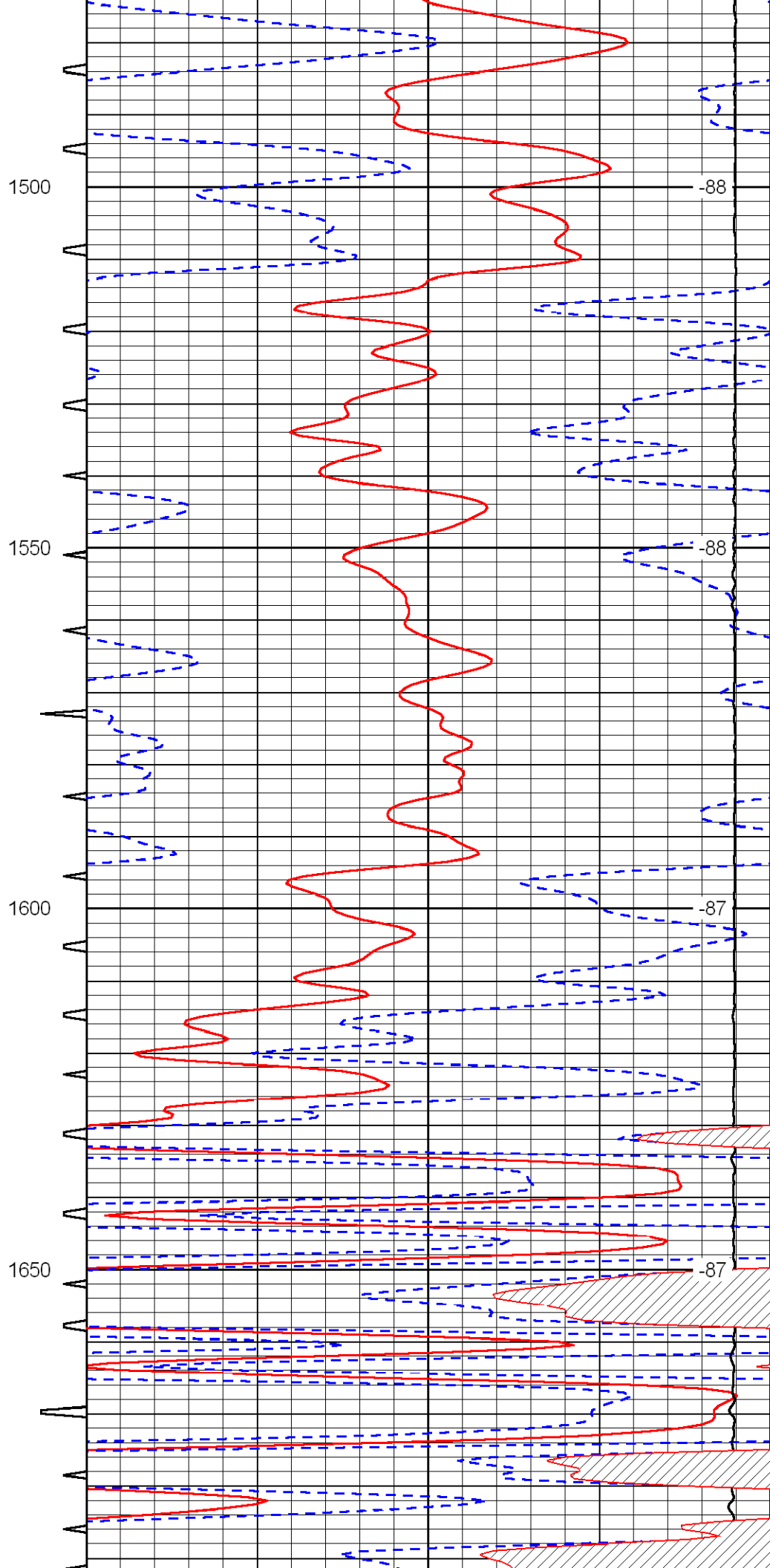
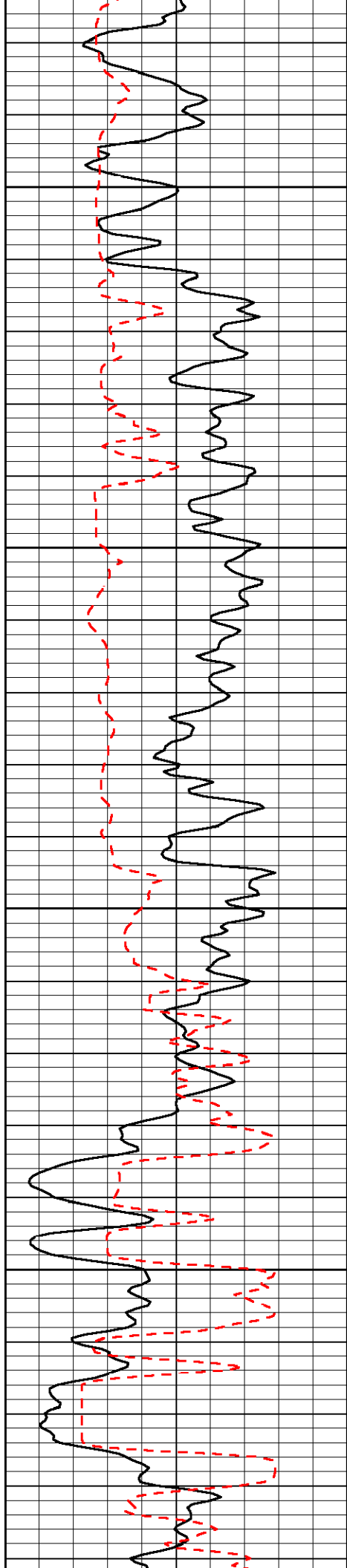


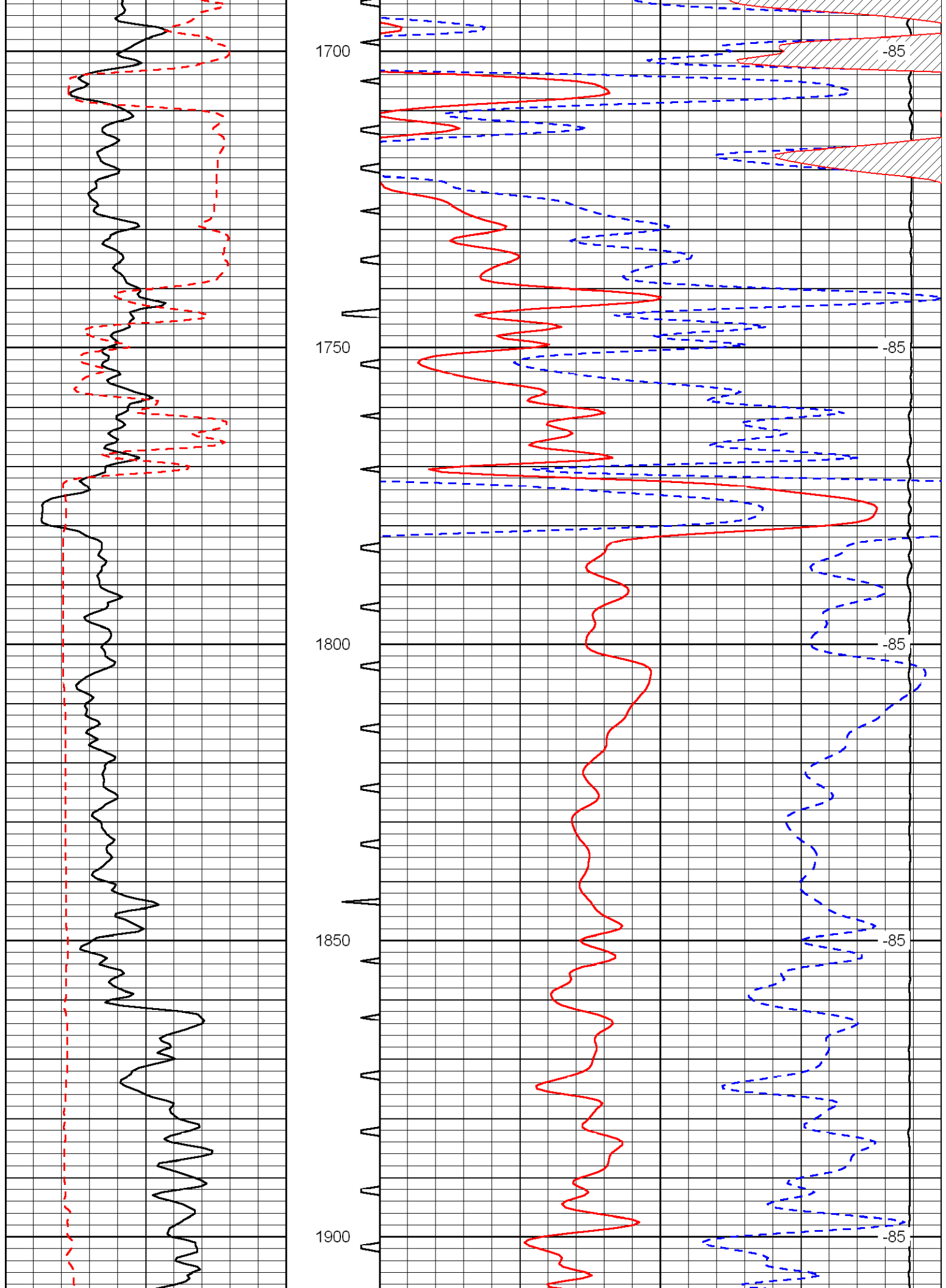


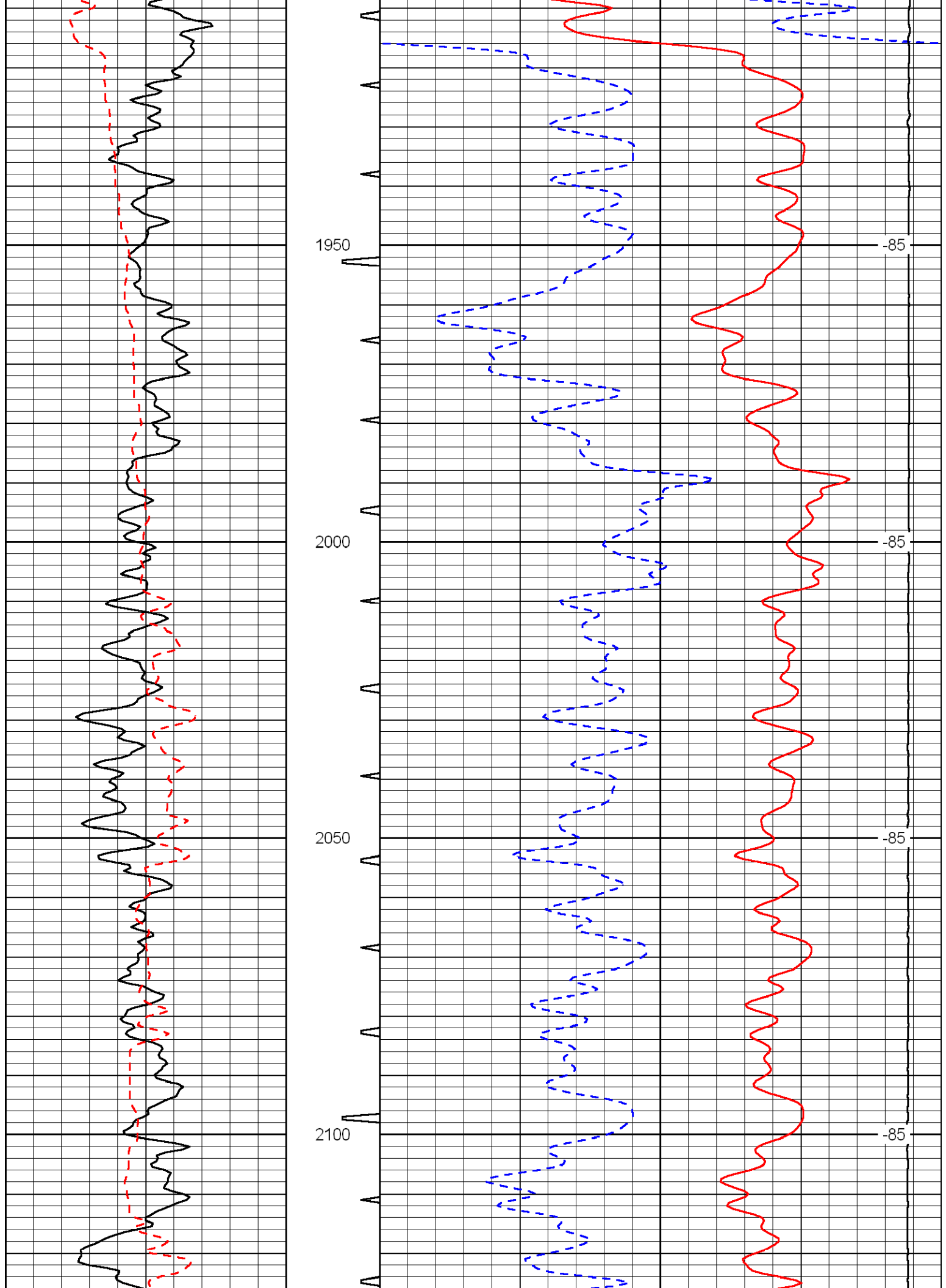


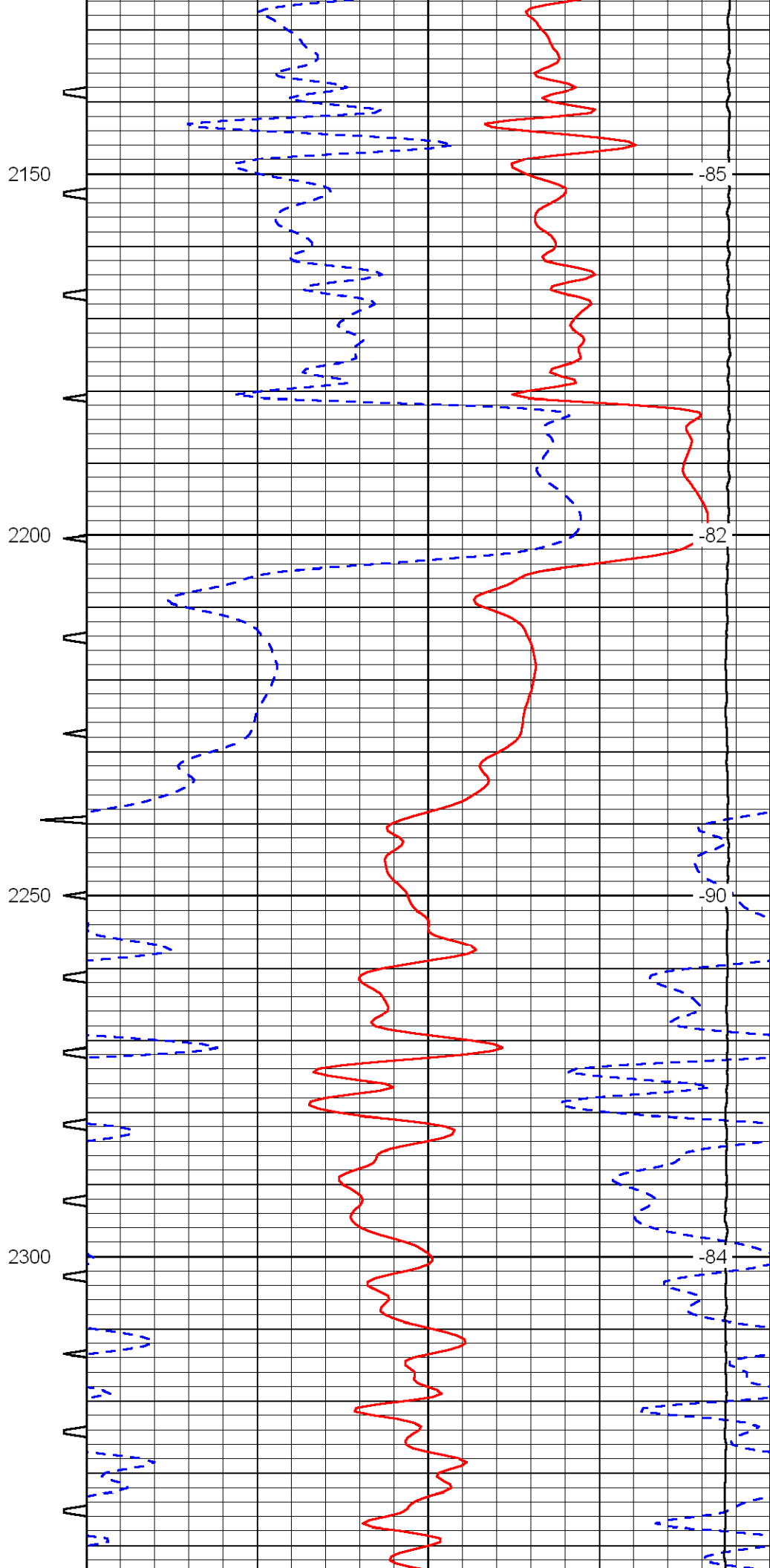
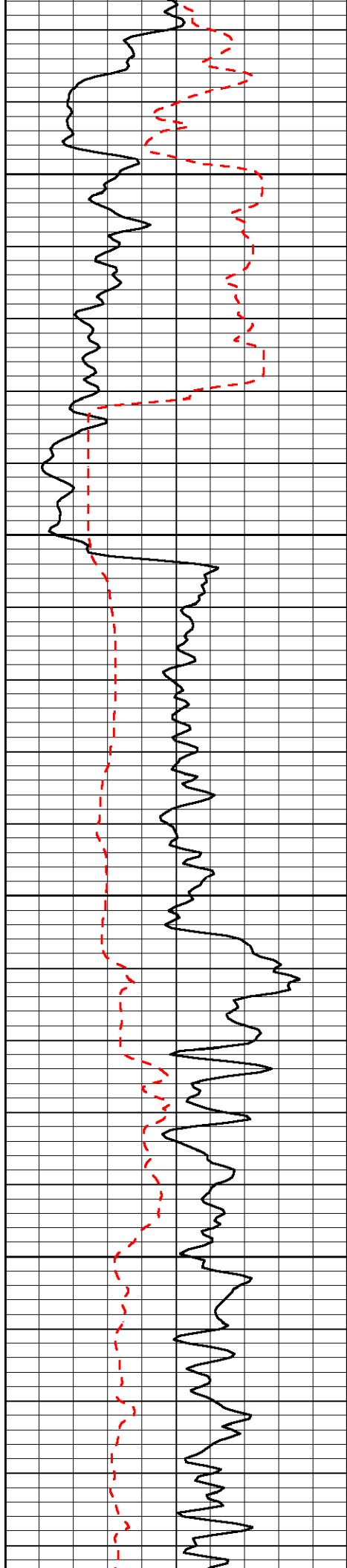


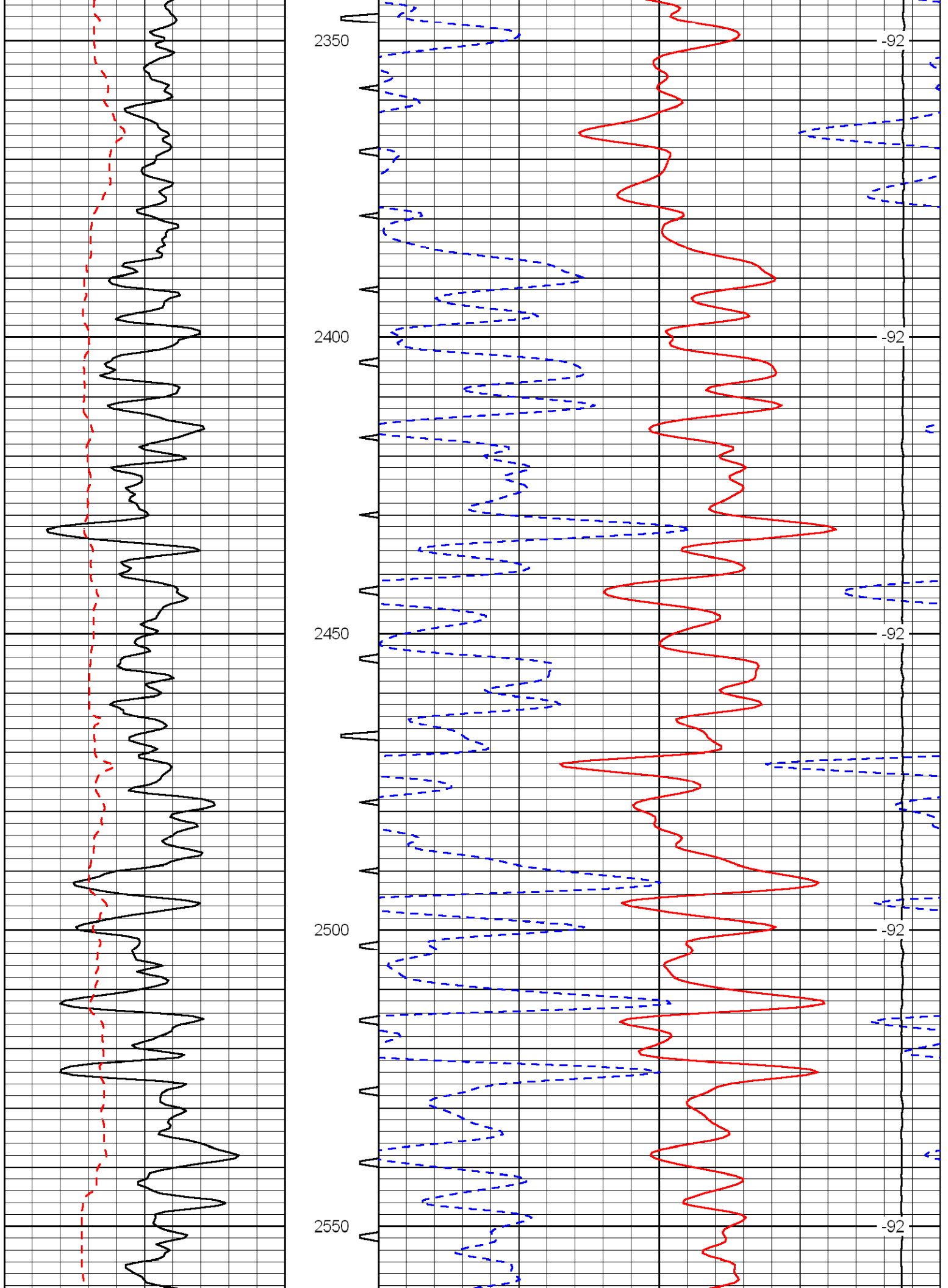


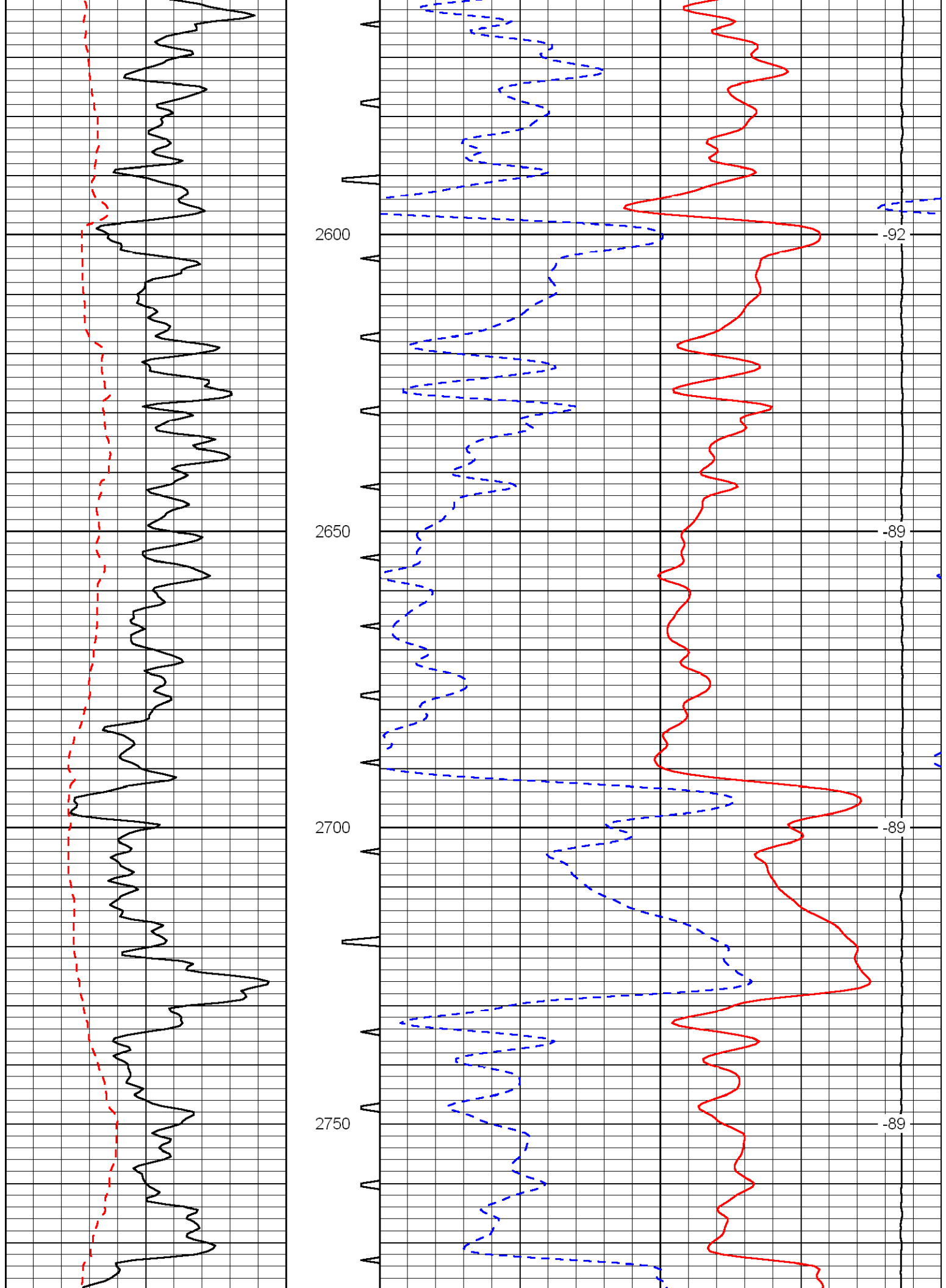


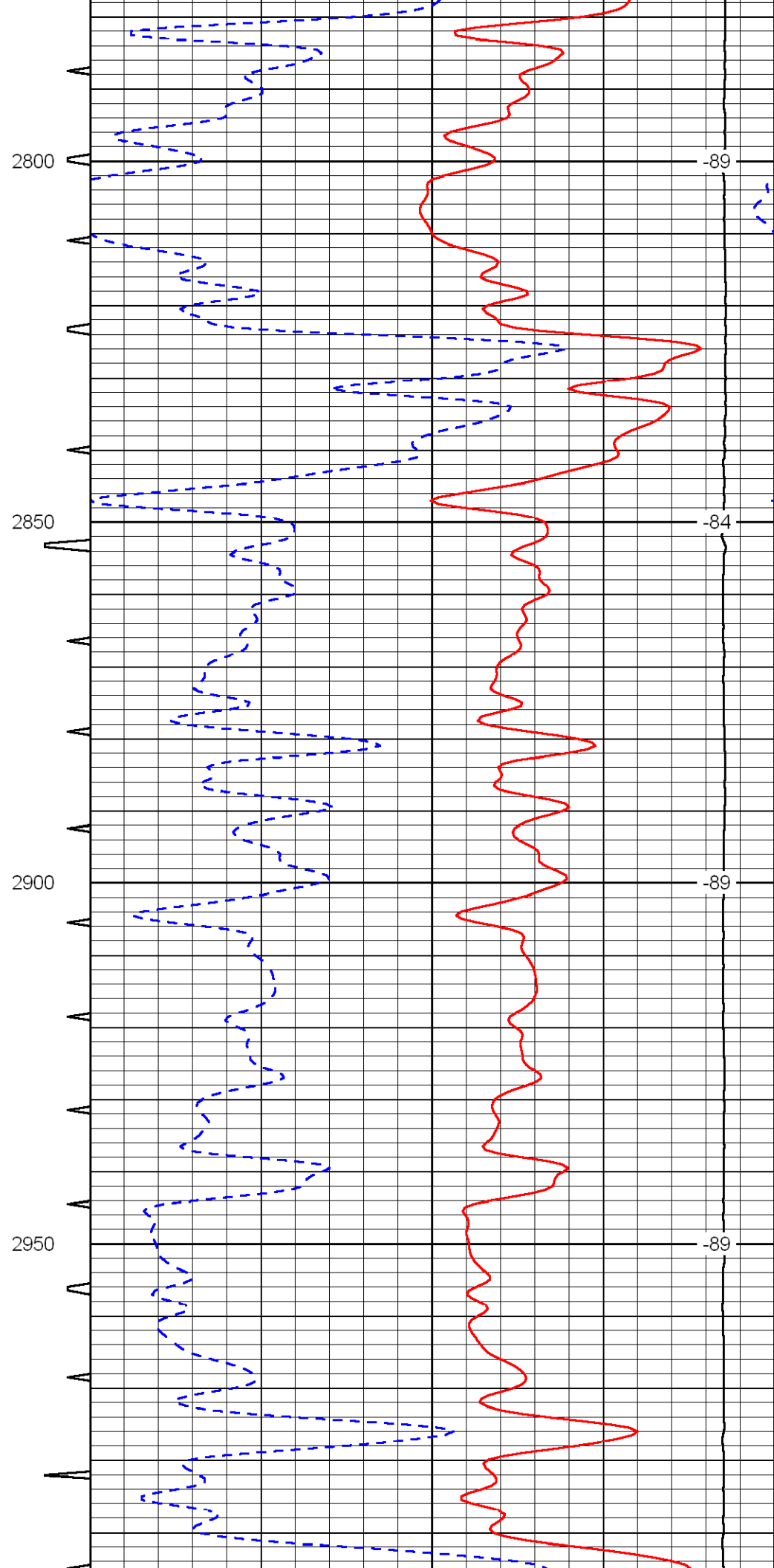
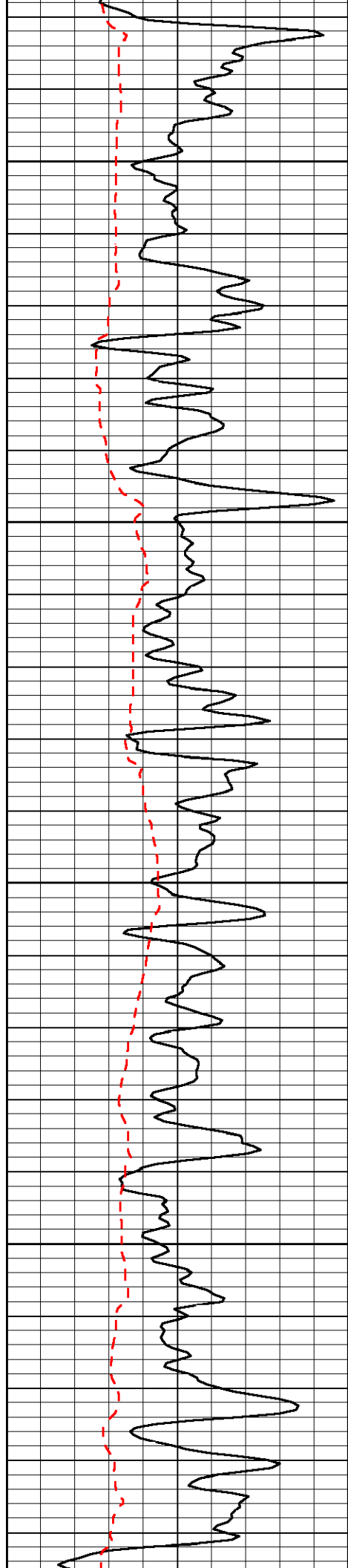


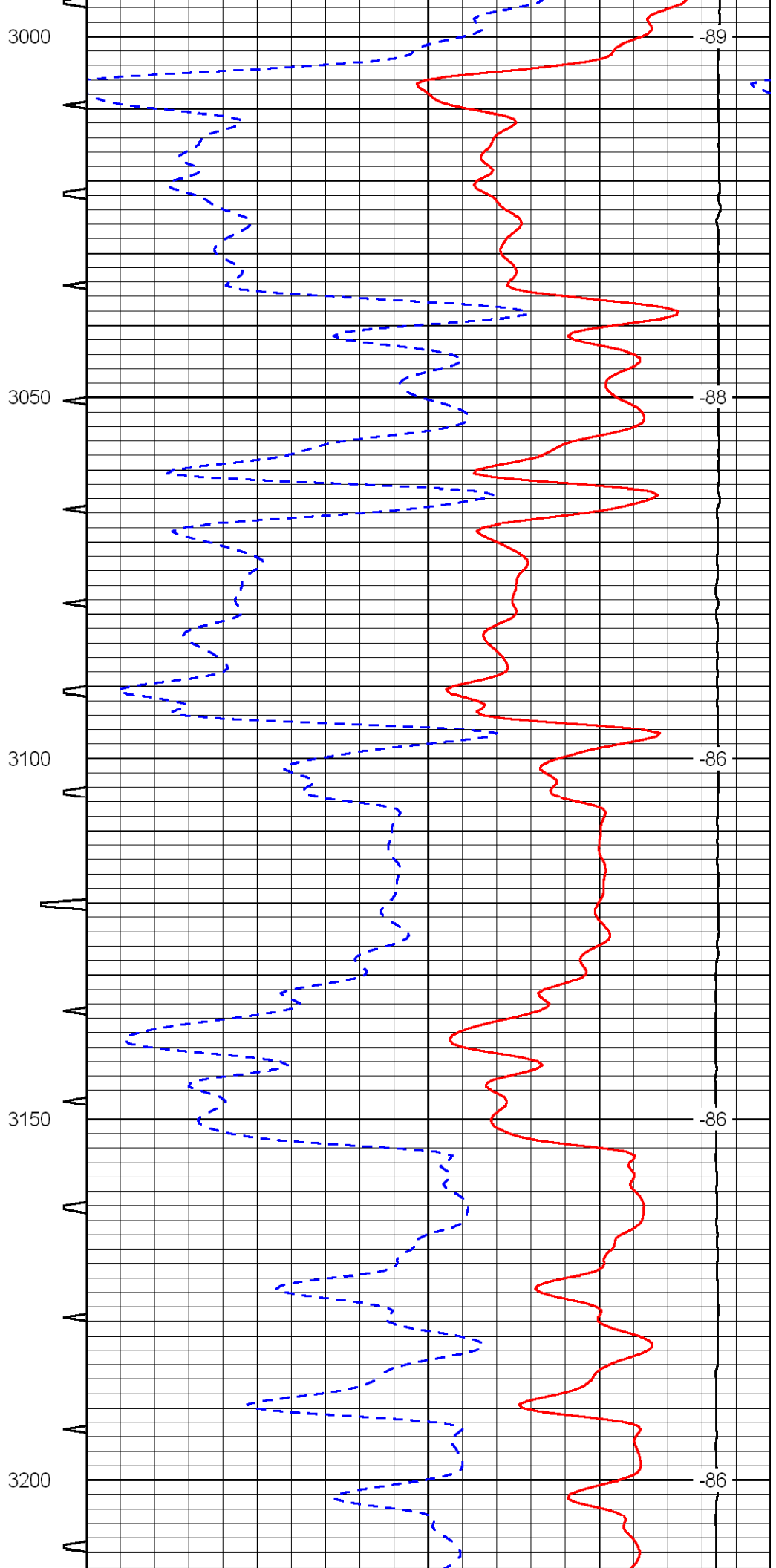
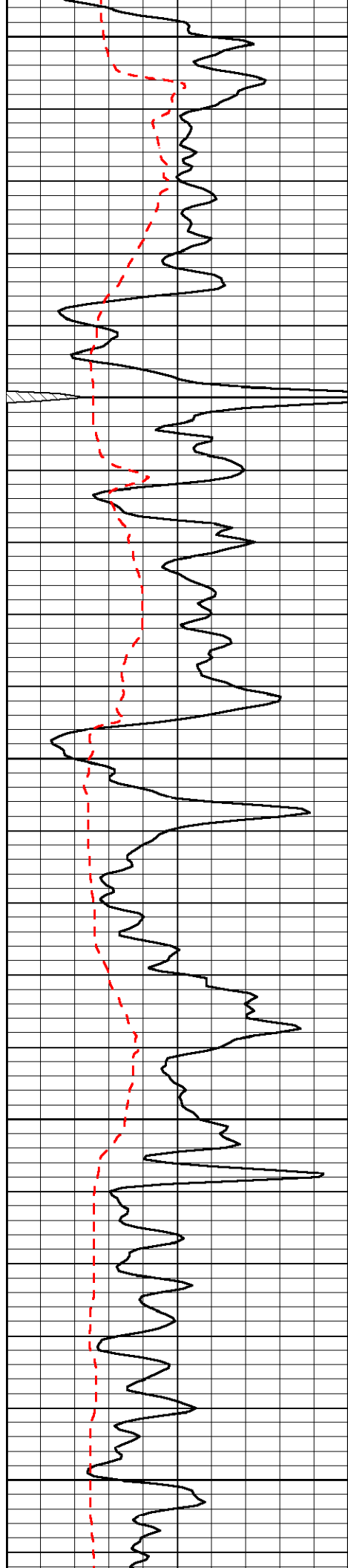


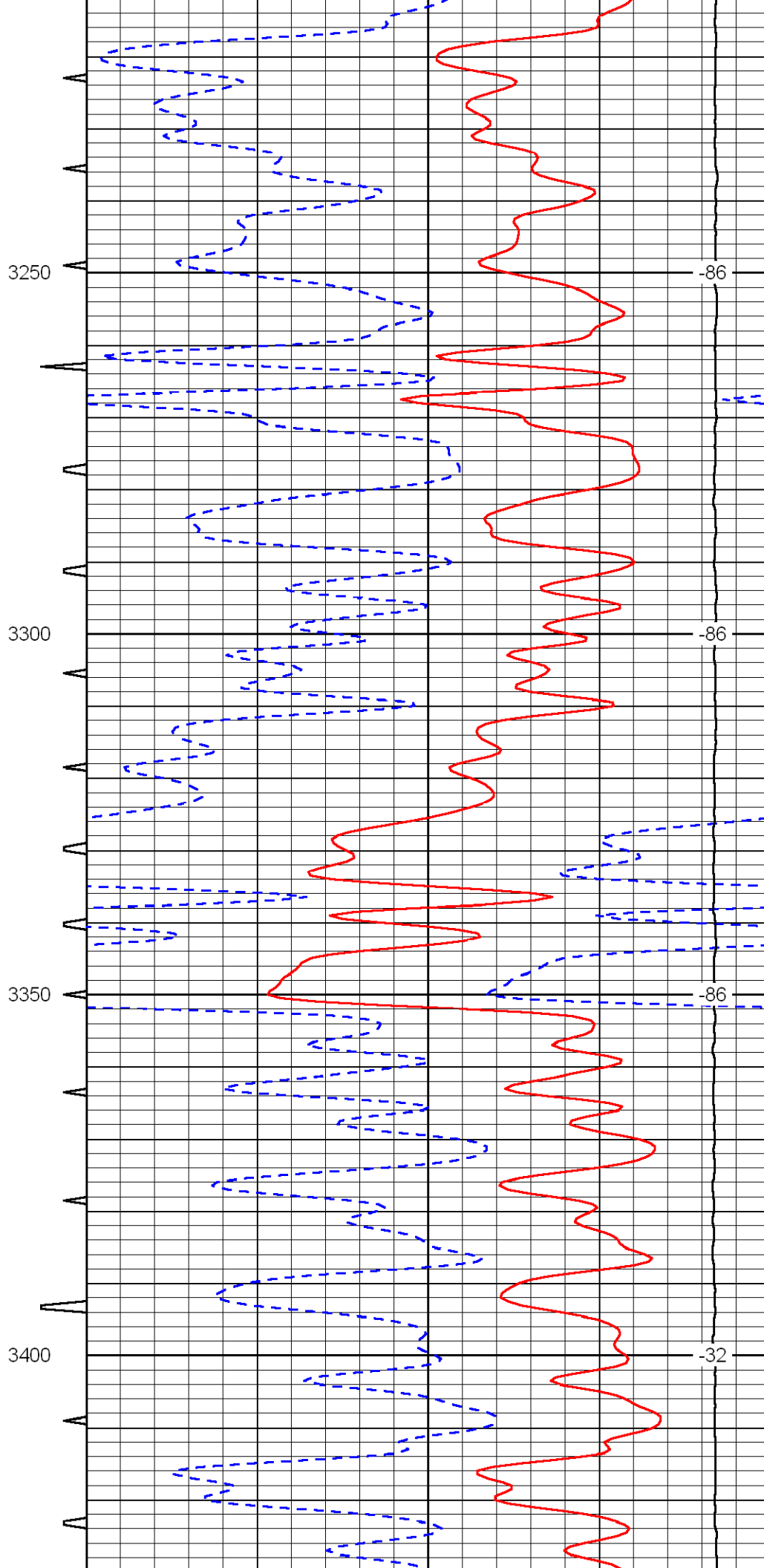
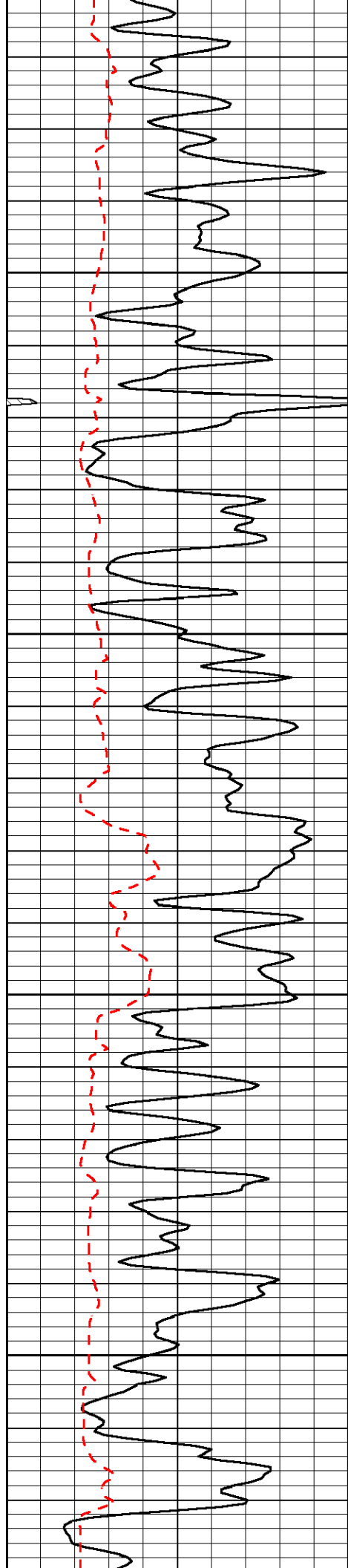


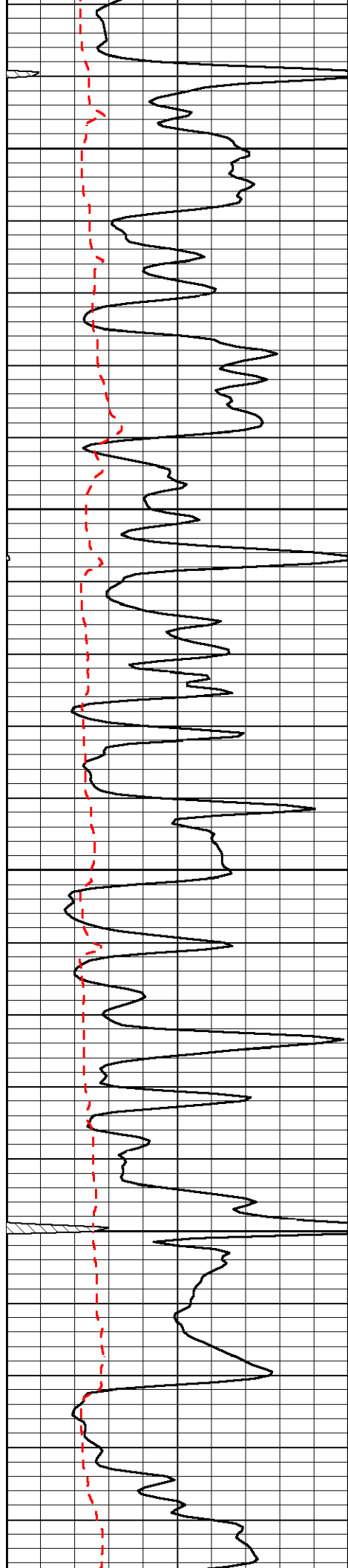










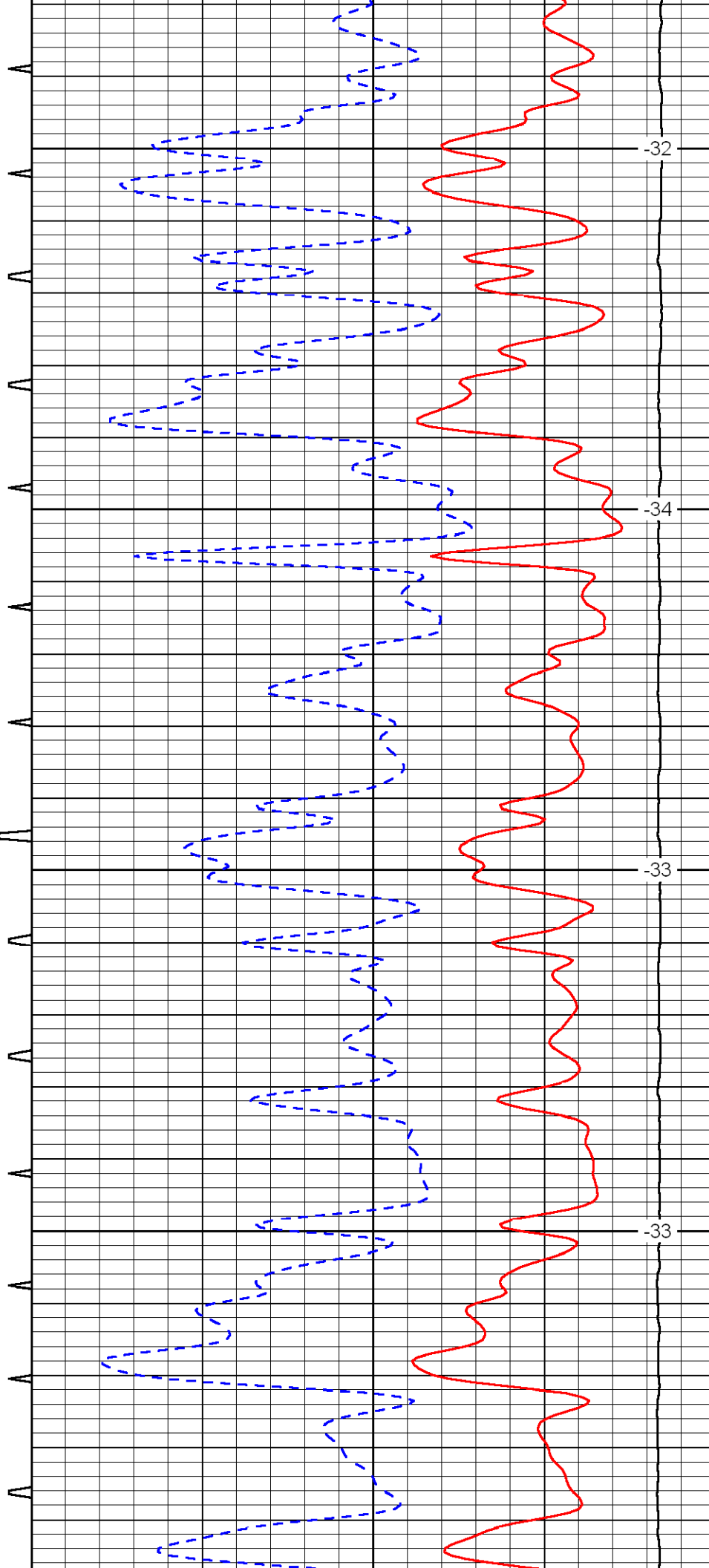


3450

3500

3550

3600

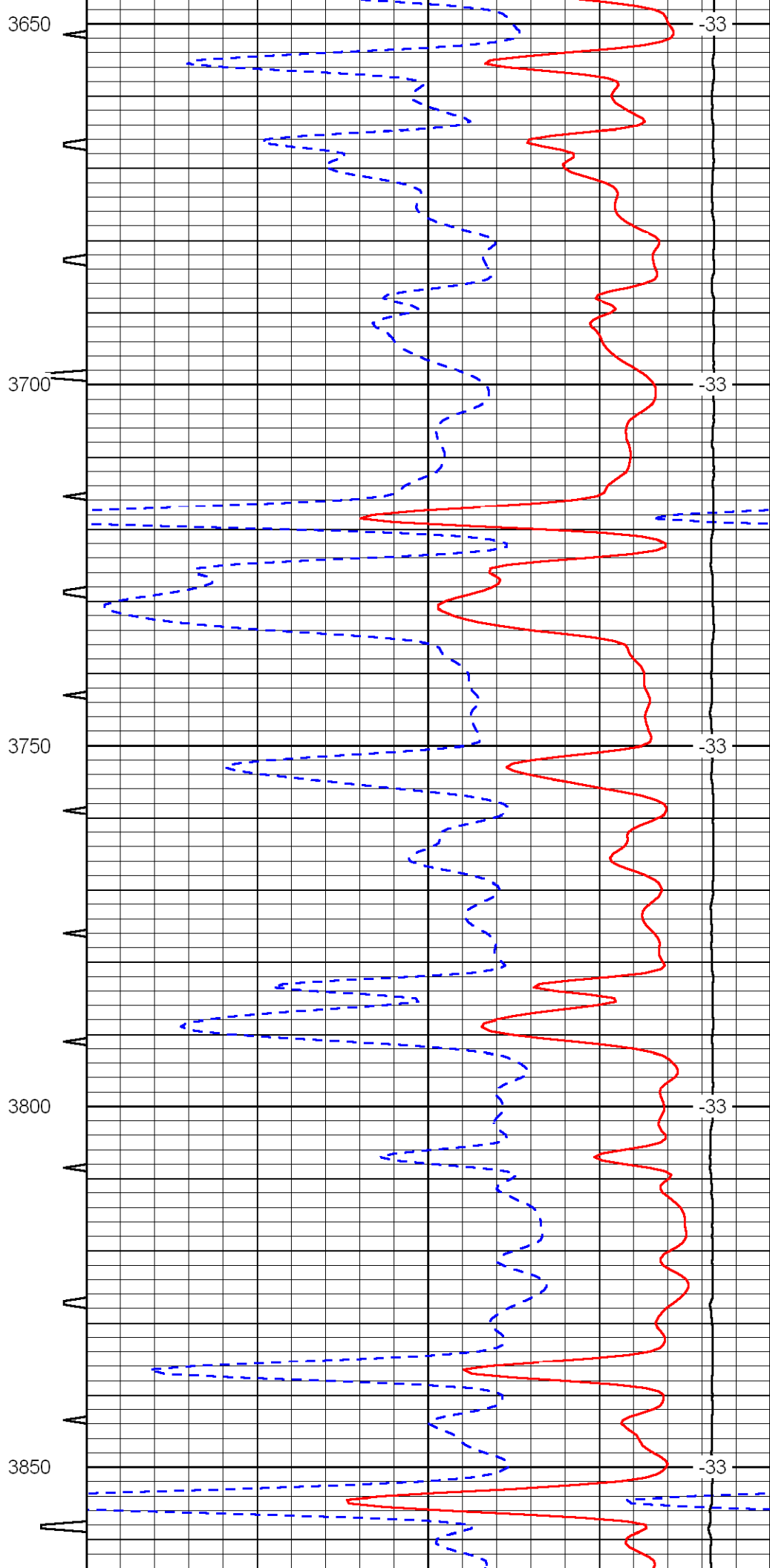
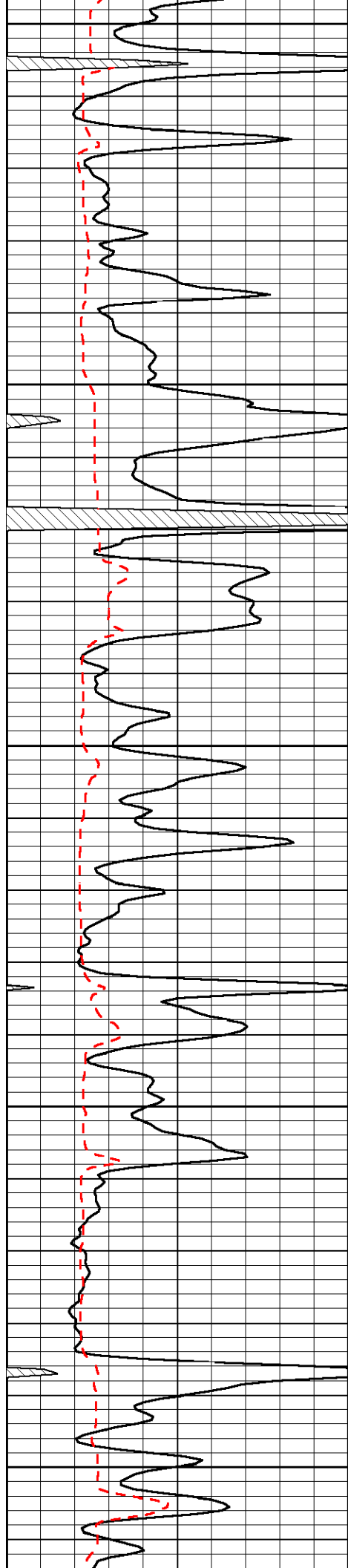


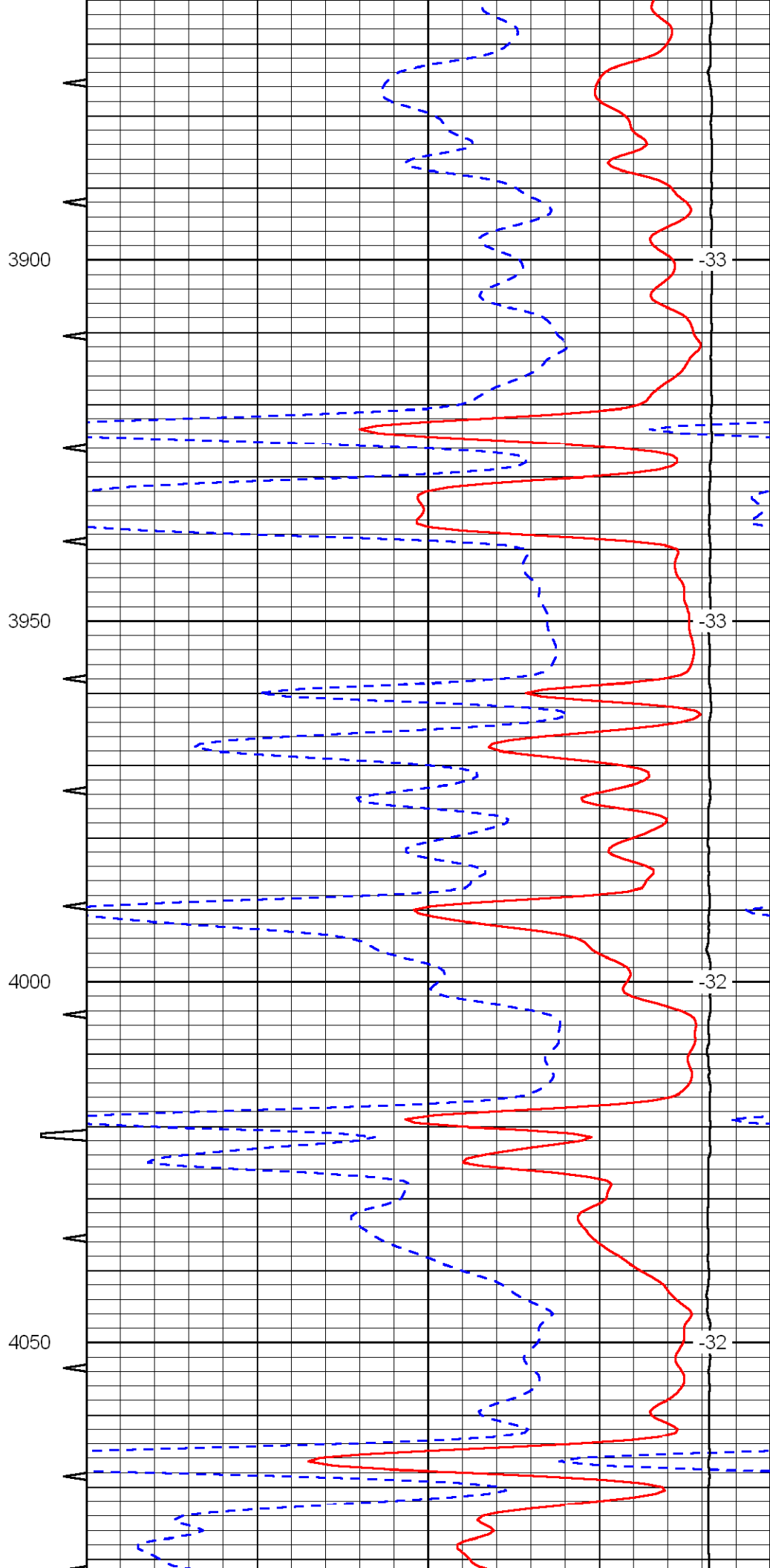
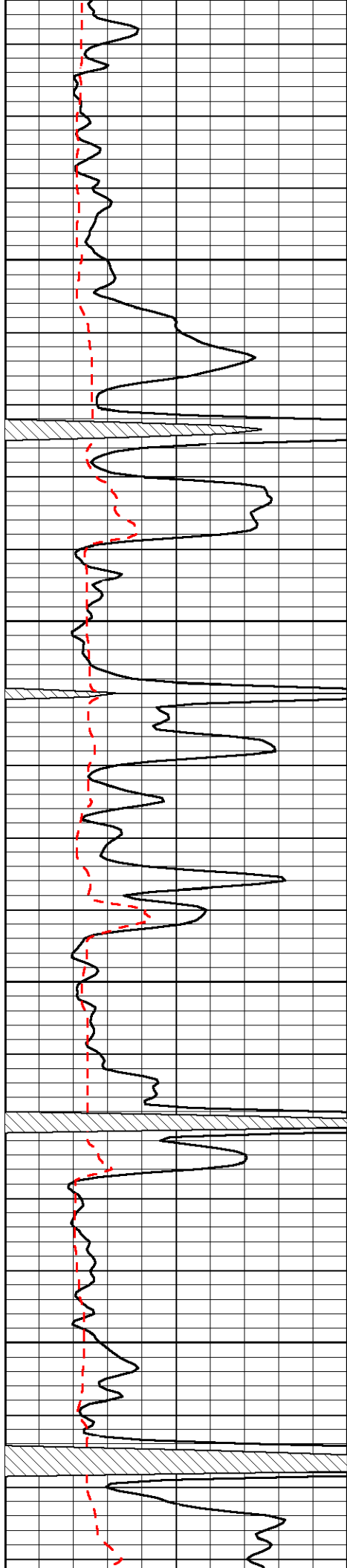
-32

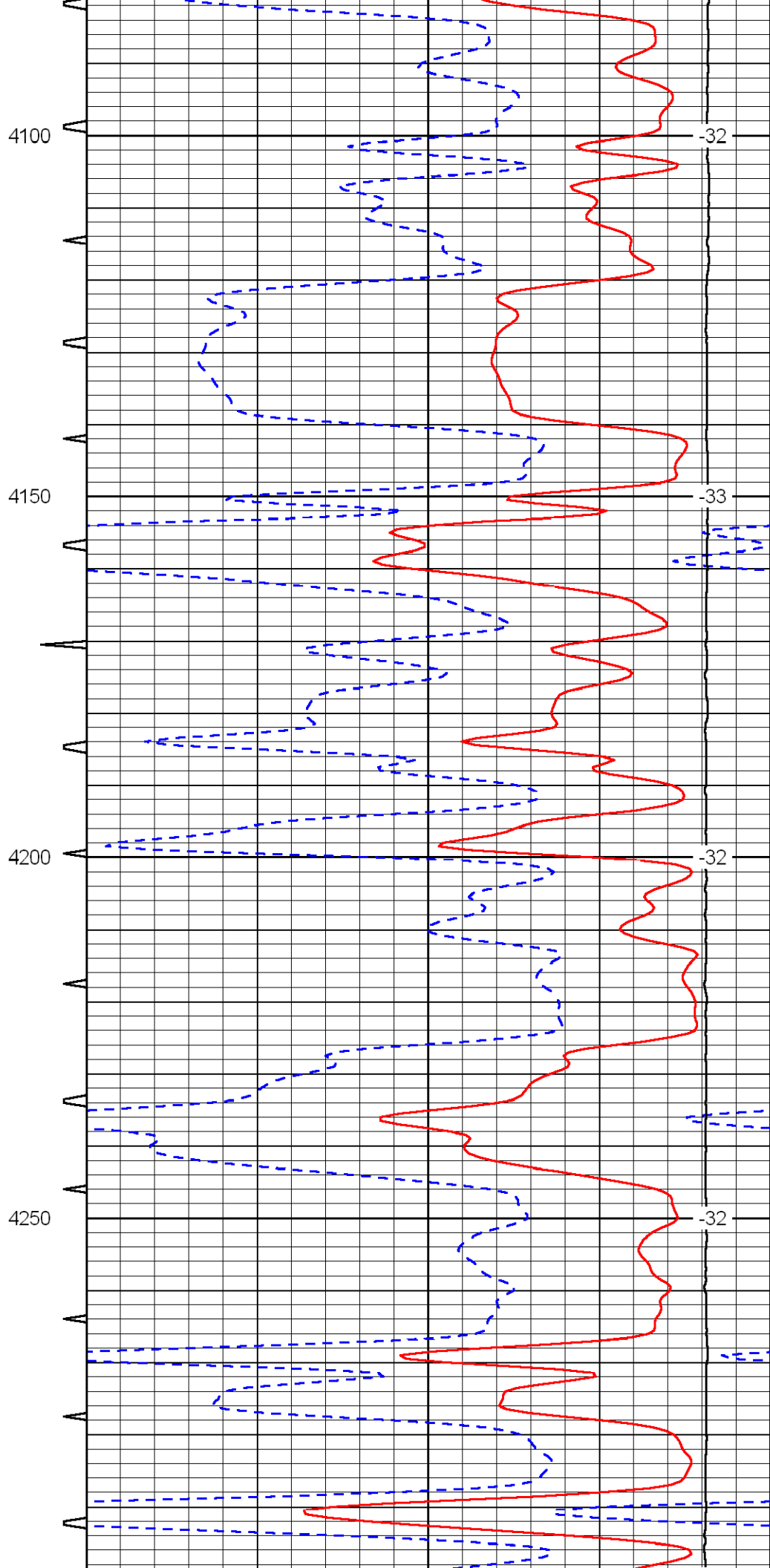
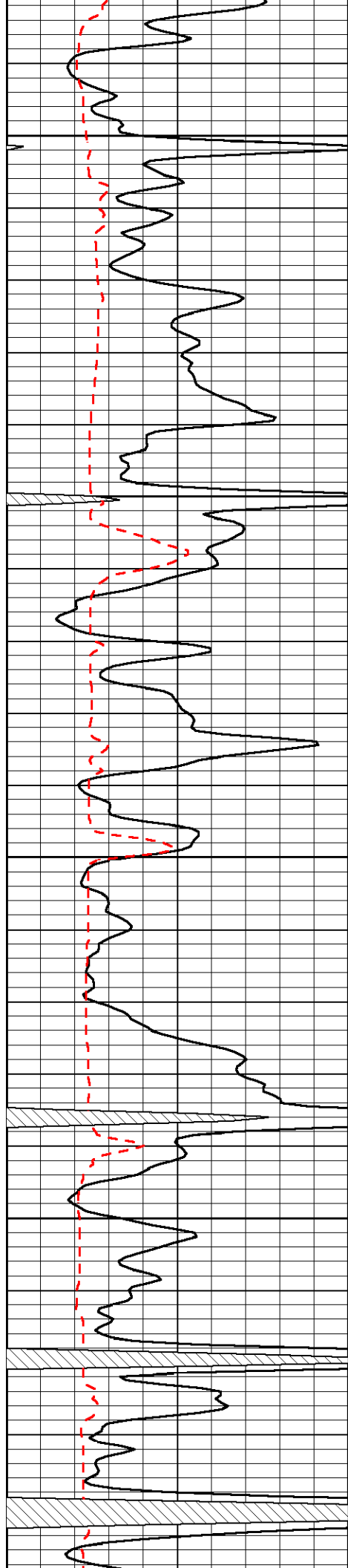
-34

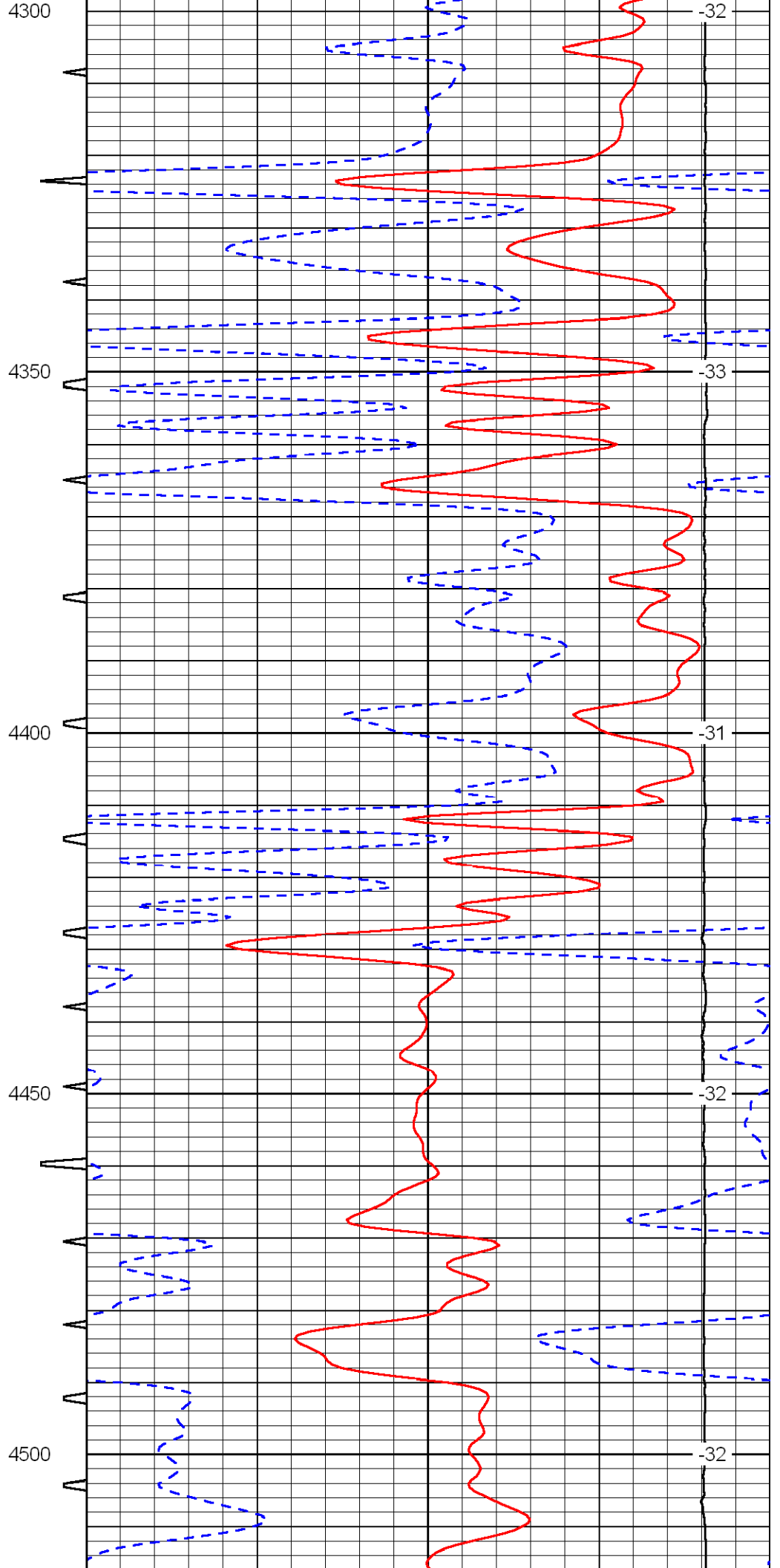
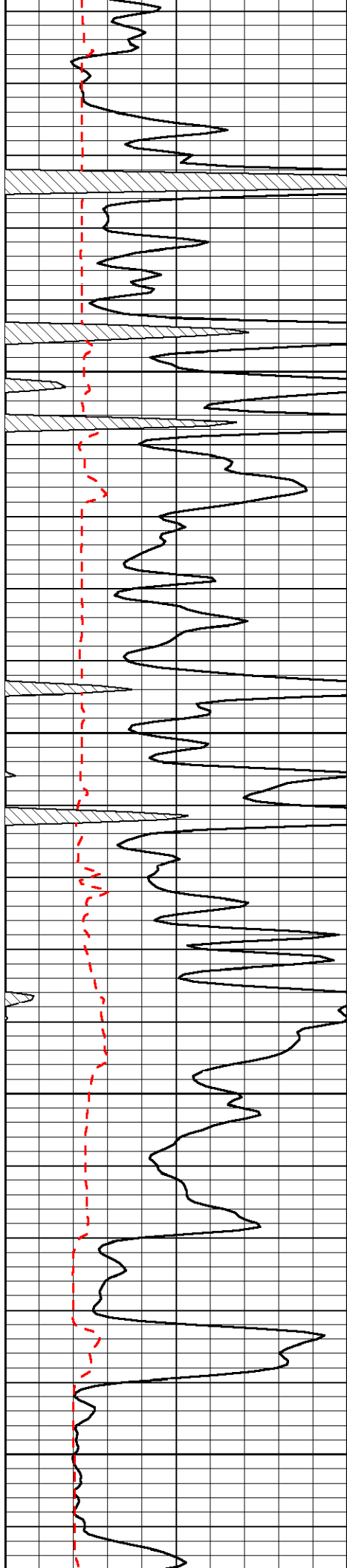
-33

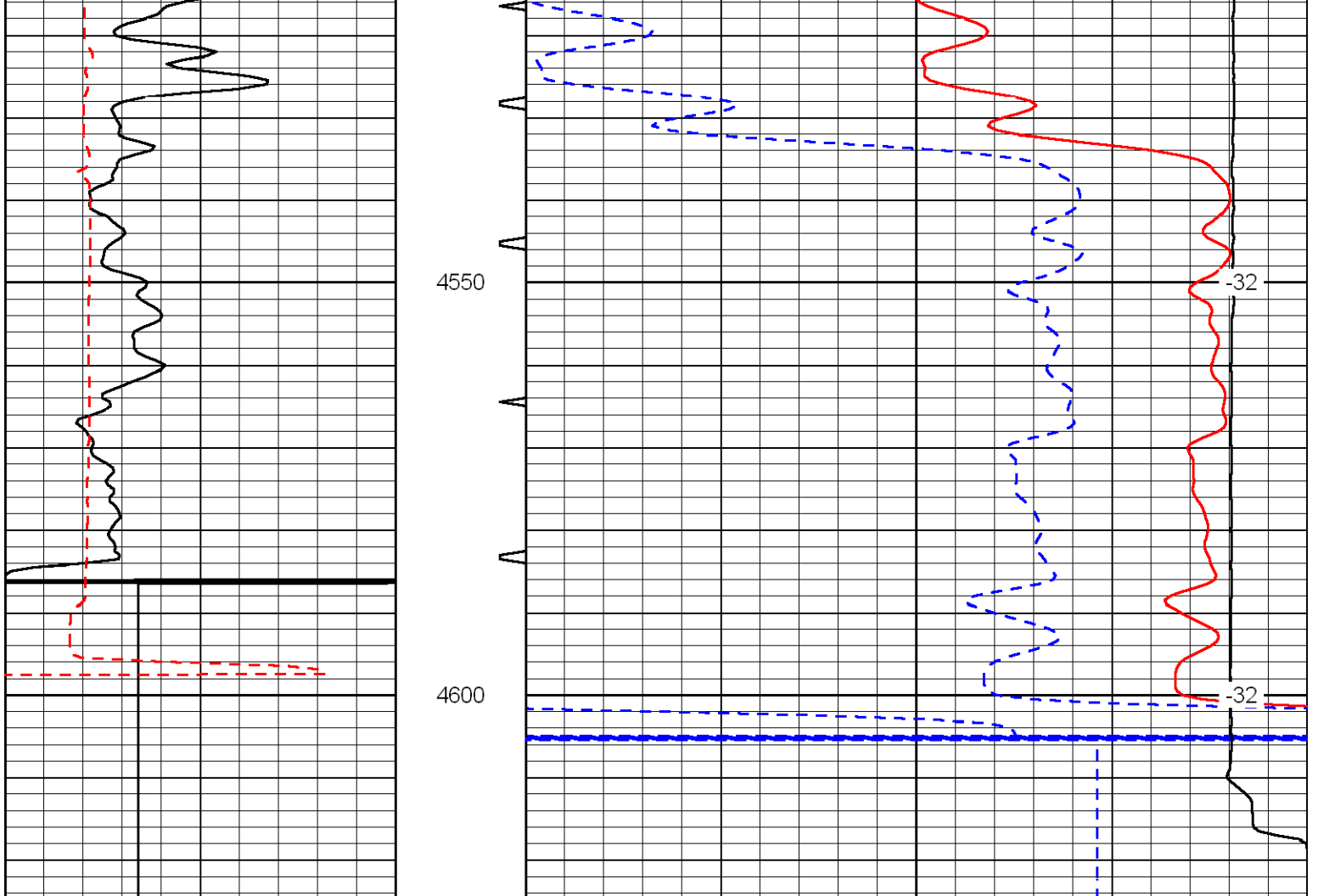
-33











0	Gamma Ray	150	Sonic Int	140	Delta Time (usec/ft) (usec/ft)	40
150	Gamma Ray	300	5 (msec) 0	30	SPOR (pu)	-10
6	Caliper (in)	16		15000	LTEN (lb) (lb)	0

LSPD  
(ft/min)