



# Microresistivity Log

DIGITAL LOG (785) 625-3858

API No.	15-109-20,872-00-00	
Company	Brito Oil Company, Inc.	
Well	Fairleigh No. 1-7	
Field	Wildcat	
County	Logan	State Kansas
Location	990' FSL & 330' FWL	
Sec: 7	Twp: 15S	Rge: 32W
Permanent Datum	Ground Level	Elevation 2779
Log Measured From	Kelly Bushing	5 Ft. Above Perm. Datum
Drilling Measured From	Kelly Bushing	
		Other Services CNL/CDL DIL/BHCS
		Elevation K.B. 2784 D.F. G.L. 2779

Date	01/29/2010	
Run Number	Two	
Depth Driller	4610	
Depth Logger	4610	
Bottom Logged Interval	4609	
Top Log Interval	3400	
Casing Driller	8.625 @ 209	
Casing Logger	207	
Bit Size	7.875	
Type Fluid in Hole	Chemical	
Salinity, ppm CL	1.500	
Density / Viscosity	9.3	40
pH / Fluid Loss	10.5	6.4
Source of Sample	Flowline	
Rm @ Meas. Temp	1.8 @ 65	
Rmf @ Meas. Temp	1.35 @ 65	
Rmc @ Meas. Temp	2.43 @ 65	
Source of Rmf / Rmc	Charts	
Rm @ BHT	.94 @ 124	
Operating Rig Time	5 Hours	
Max Rec. Temp. F	124	
Equipment Number	10	
Location	Hays	
Recorded By	Jason Wellbrock	
Witnessed By	Jeff Christian	

<<< Fold Here >>>

All interpretations are opinions based on inferences from electrical or other measurements and we cannot and do not guarantee the accuracy or correctness of any interpretation, and we shall not, except in the case of gross or willful negligence on our part, be liable or responsible for any loss, costs, damages, or expenses incurred or sustained by anyone resulting from any interpretation made by any of our officers, agents or employees. These interpretations are also subject to our general terms and conditions set out in our current Price Schedule.

Comments

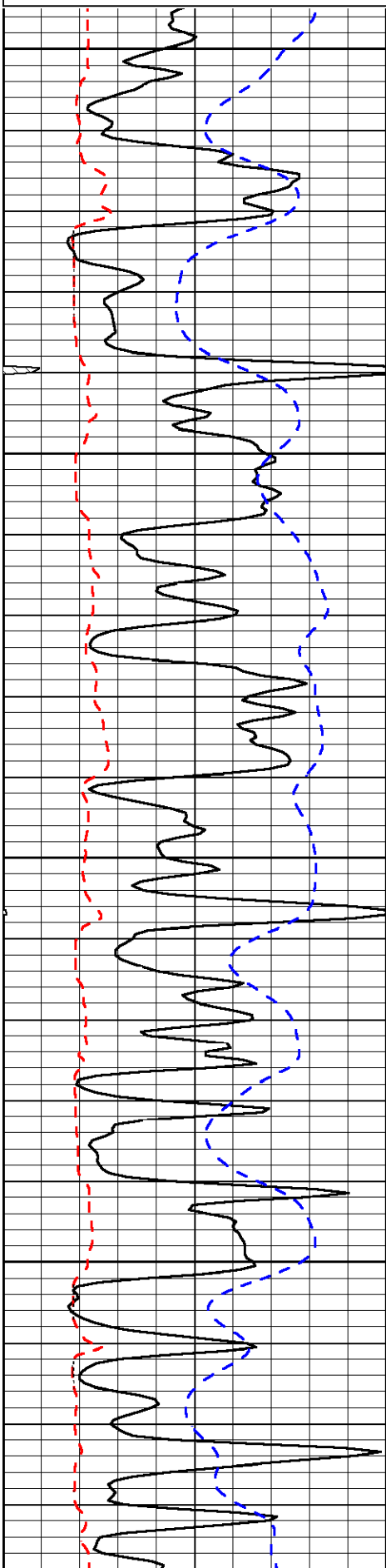
Thank you for using Log-Tech, Inc.  
 (785) 625-3858  
 Oakley 24S to Gold rd, 4 W, 2 S, E Into

Database File: c:\warrior\data\brito oil\_fairleigh no. 1-7\britohd.db  
 Dataset Pathname: dil/brito2in  
 Presentation Format: micro  
 Dataset Creation: Fri Jan 29 10:11:19 2010  
 Charted by: Depth in Feet scaled 1:240

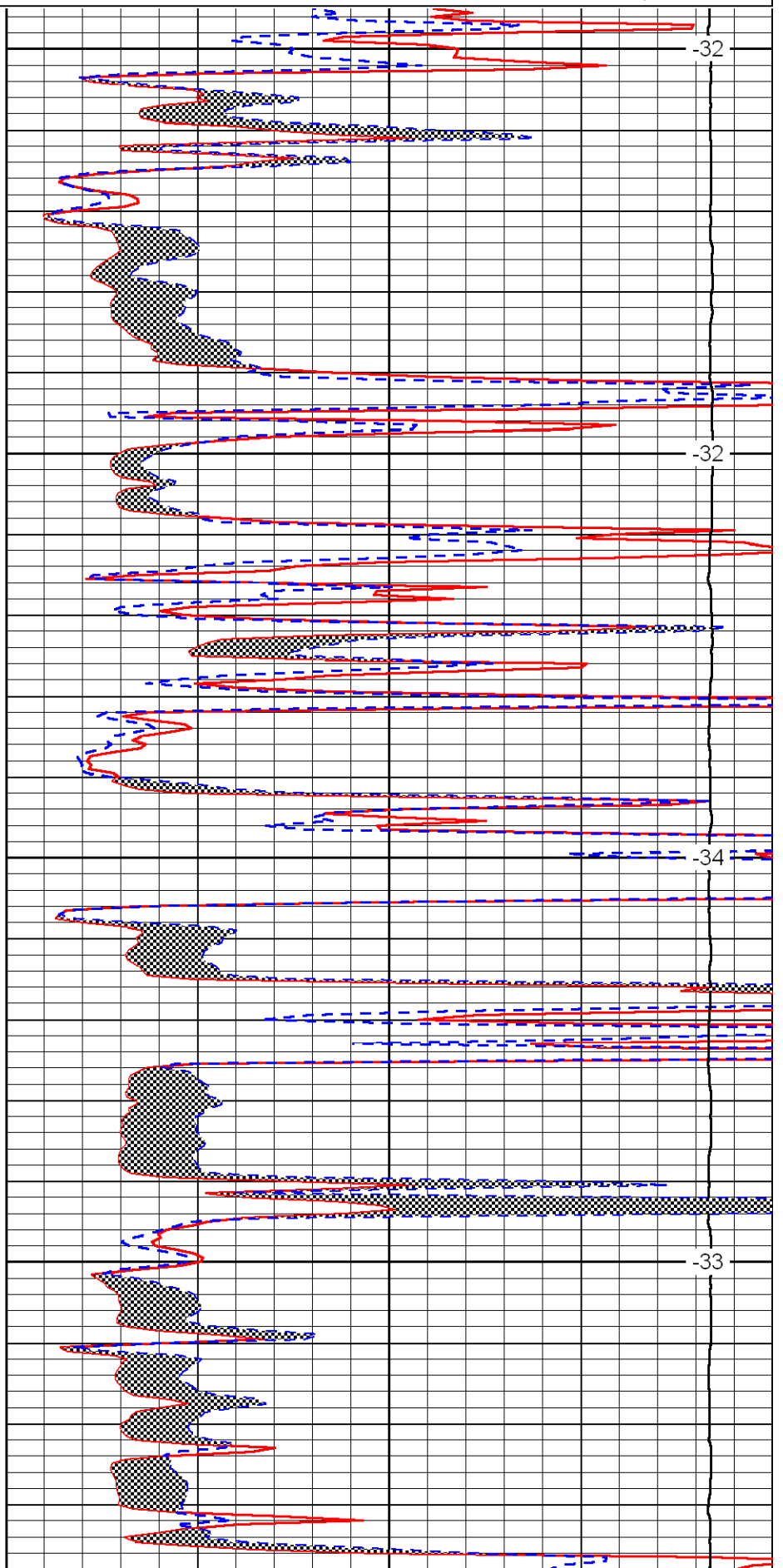
0	Gamma Ray	150
6	Micro Log Caliper (in)	16
-200	SP (MV)	0

0	Micro Inverse 1 X 1 (Ohm-m)	40
0	Micro Normal 2" (Ohm-m)	40
15000	Line Weight (lb)	0

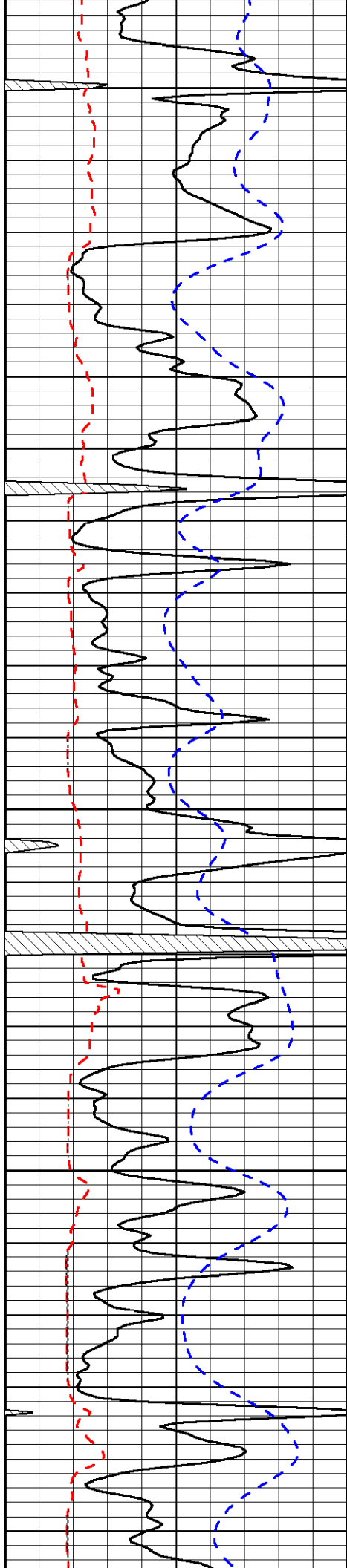
LSPD  
(ft/min)



3400  
3450  
3500  
3550



-32  
-32  
-34  
-33



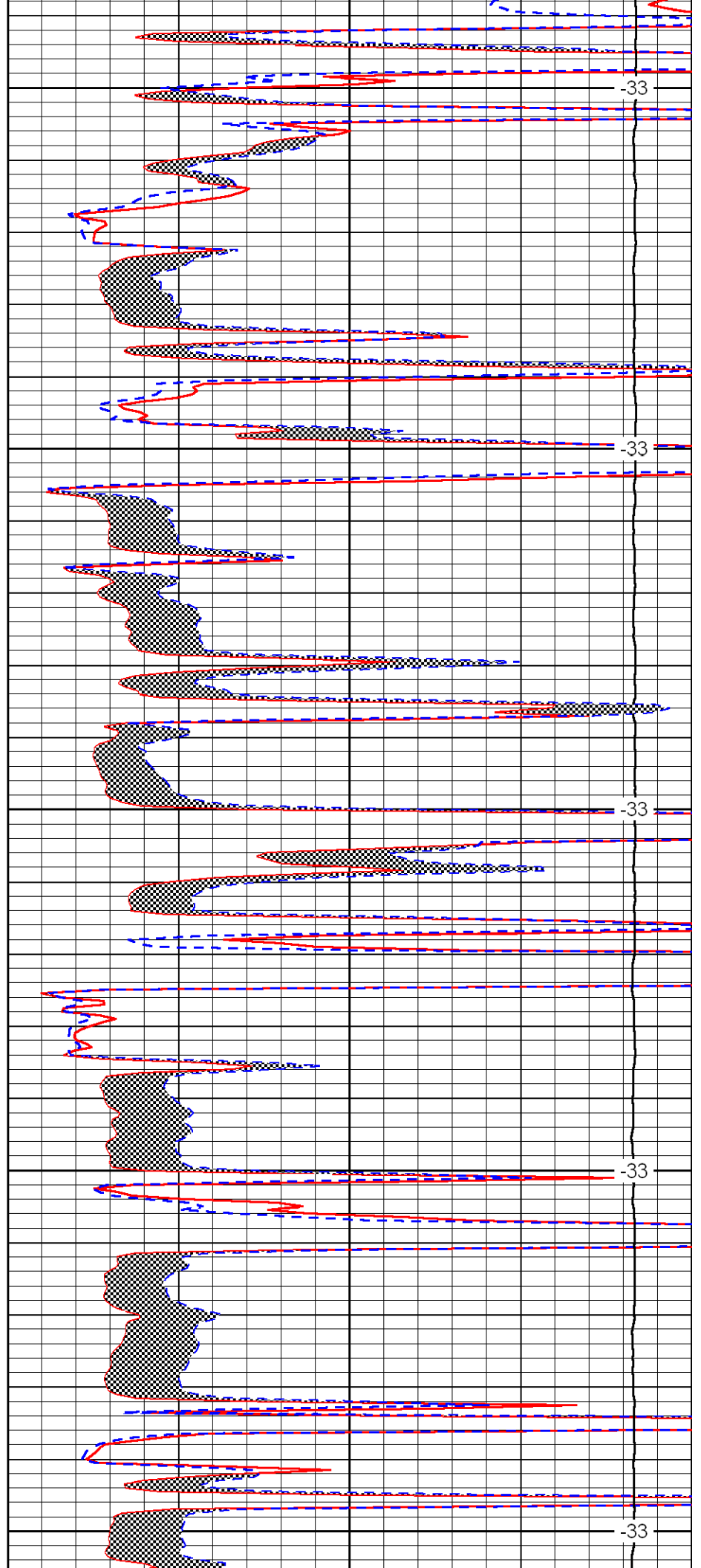
3600

3650

3700

3750

3800



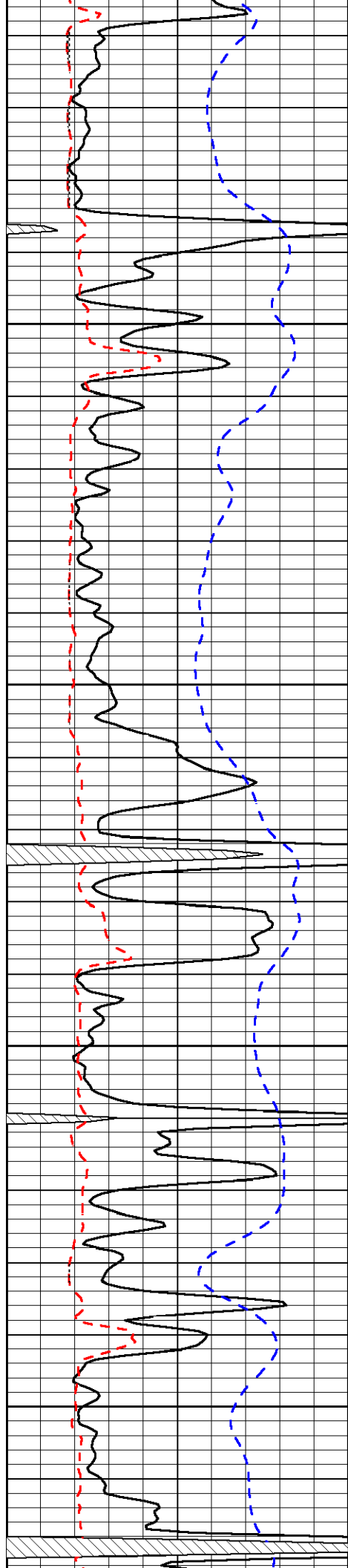
-33

-33

-33

-33

-33

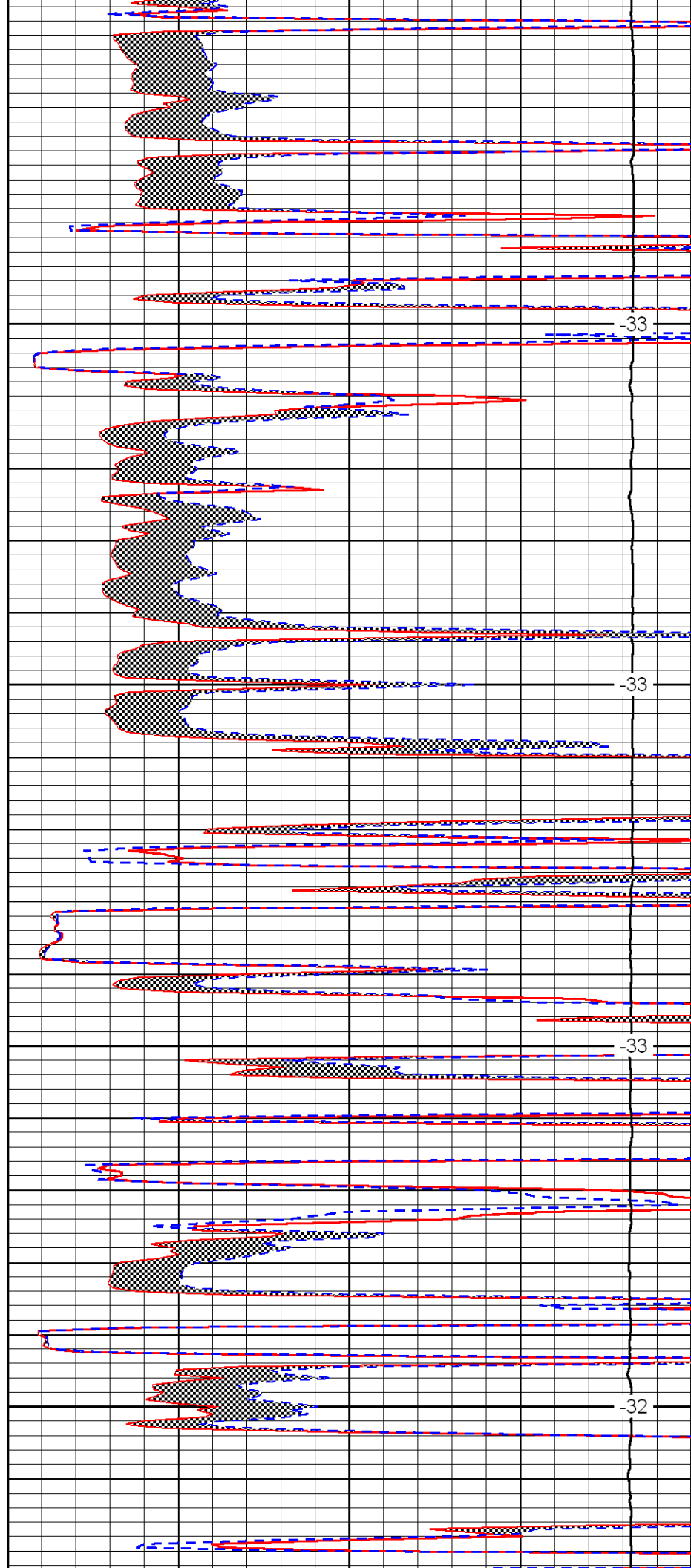


3850

3900

3950

4000

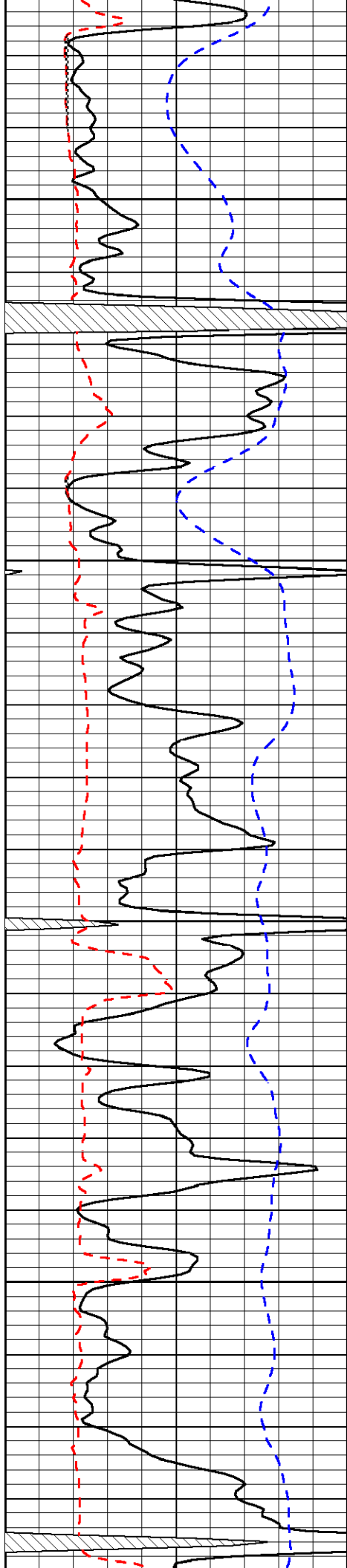


-33

-33

-33

-32

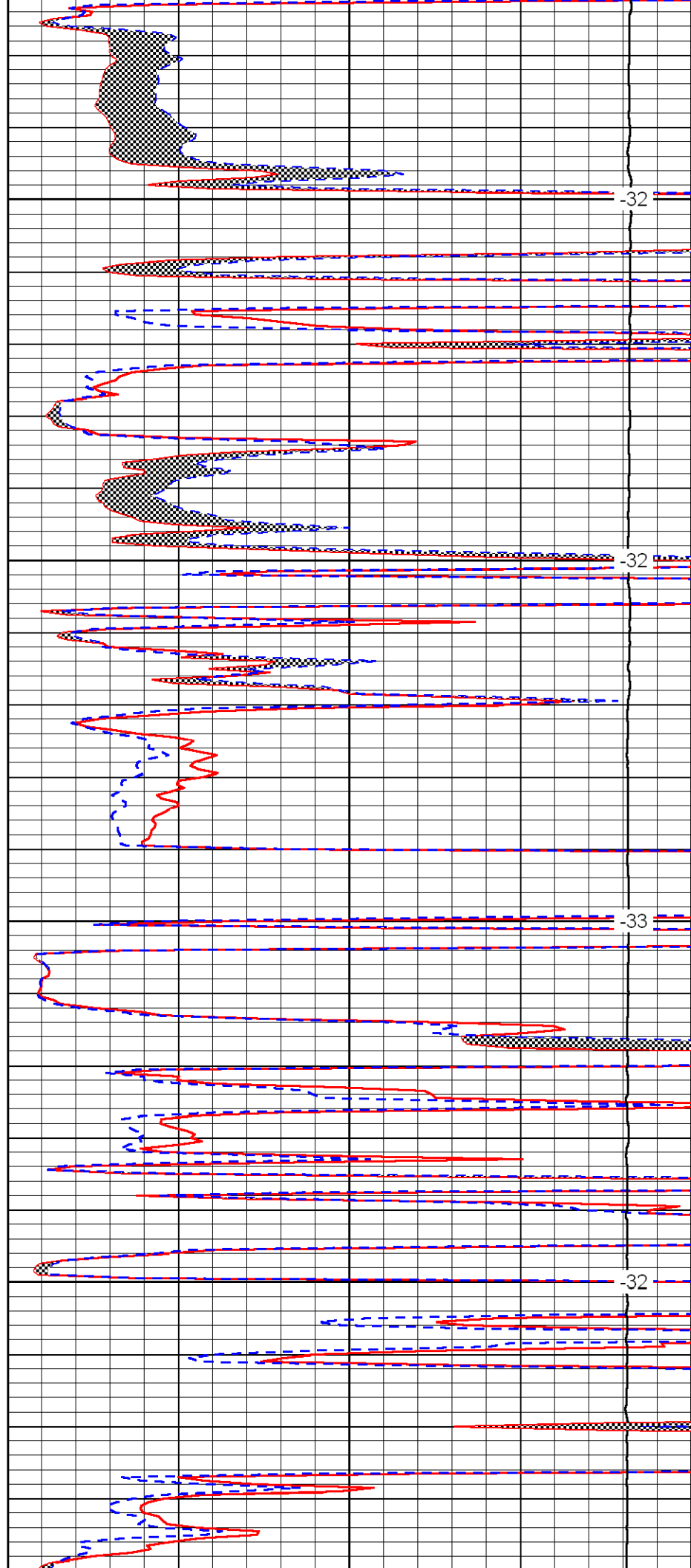


4050

4100

4150

4200

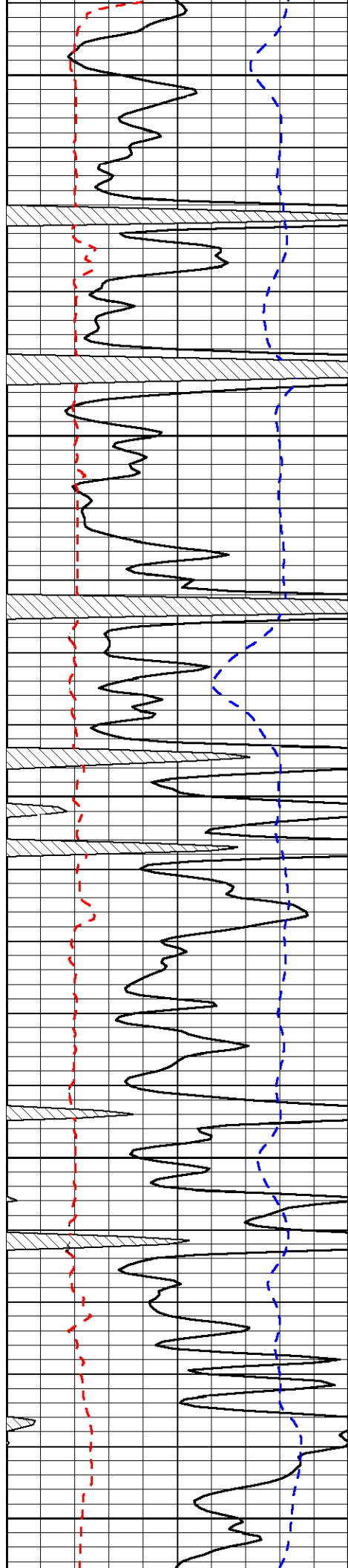


-32

-32

-33

-32



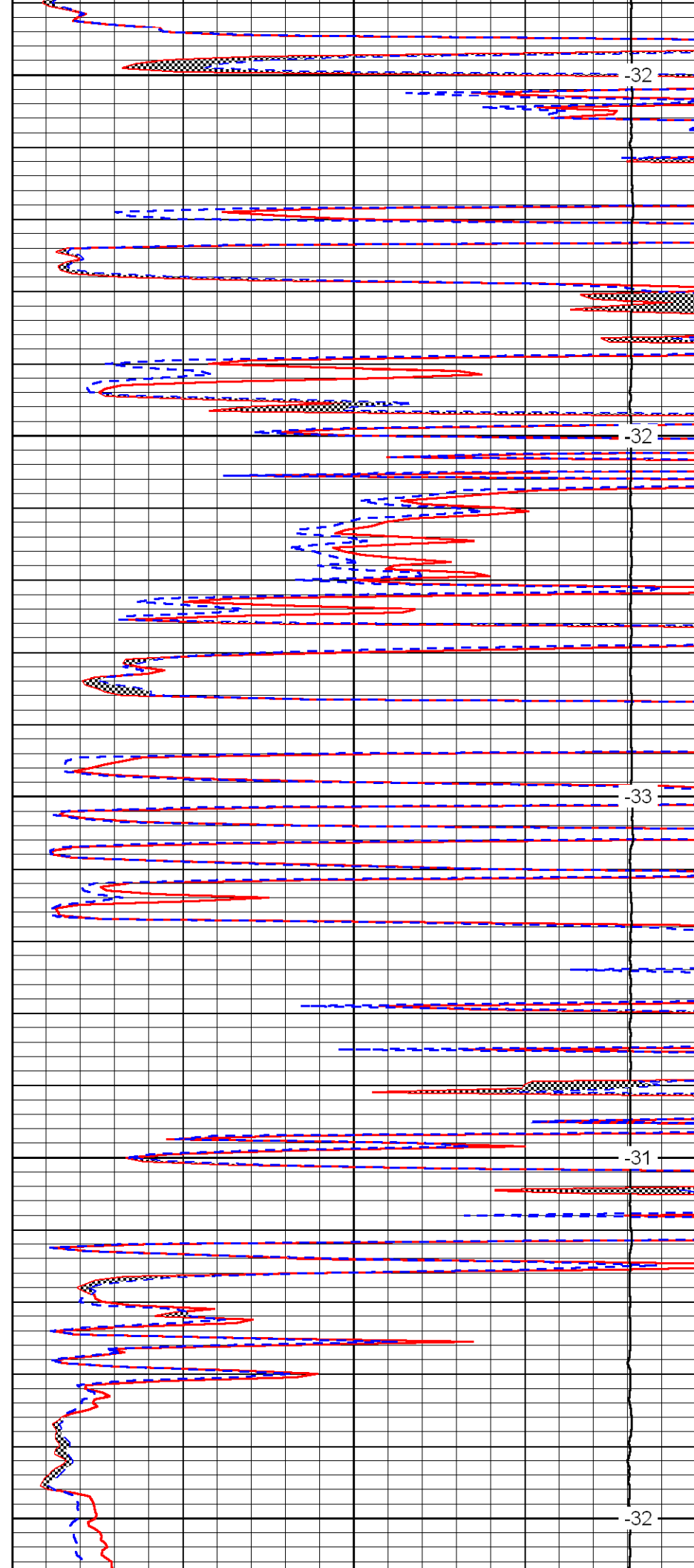
4250

4300

4350

4400

4450



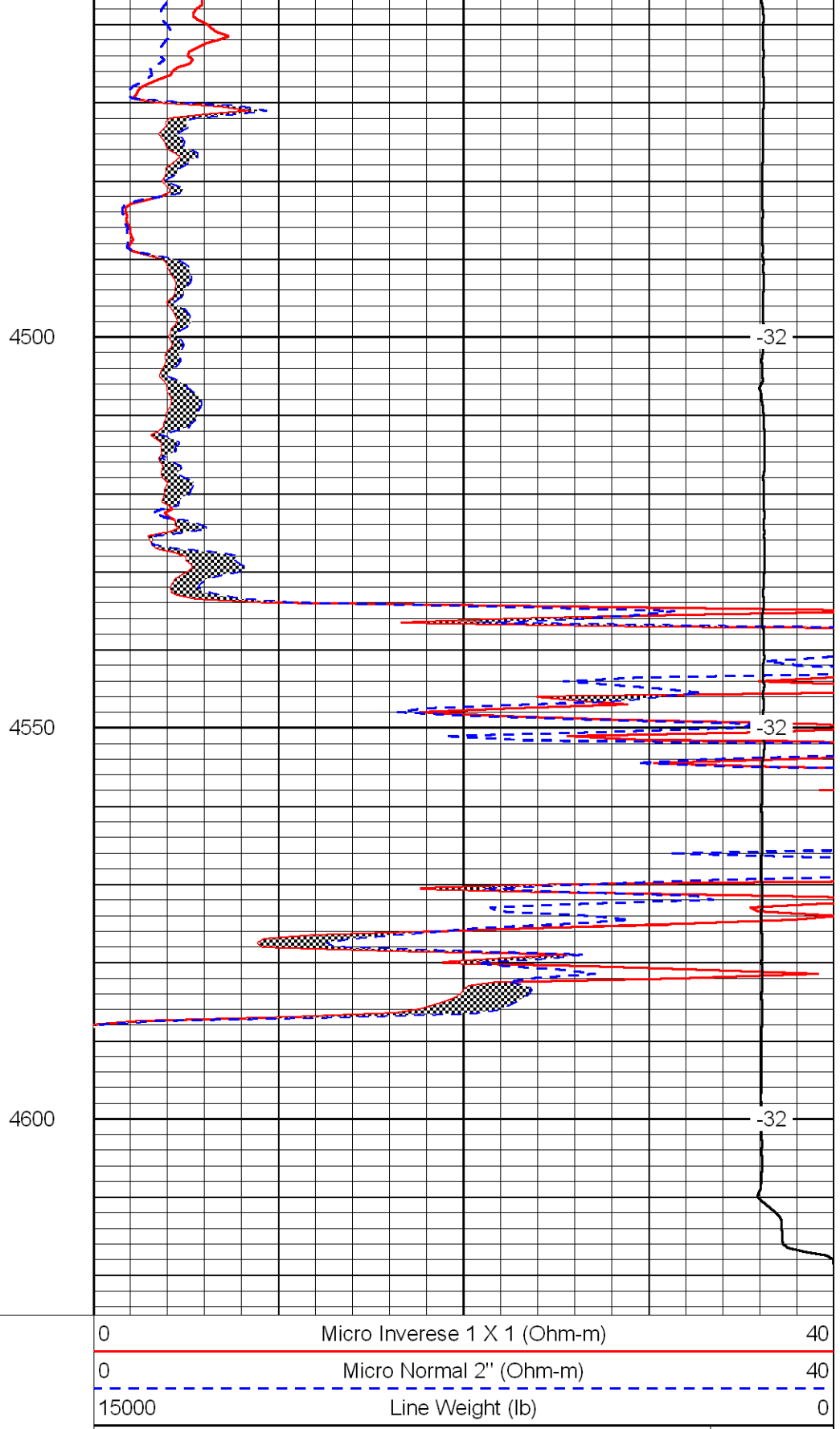
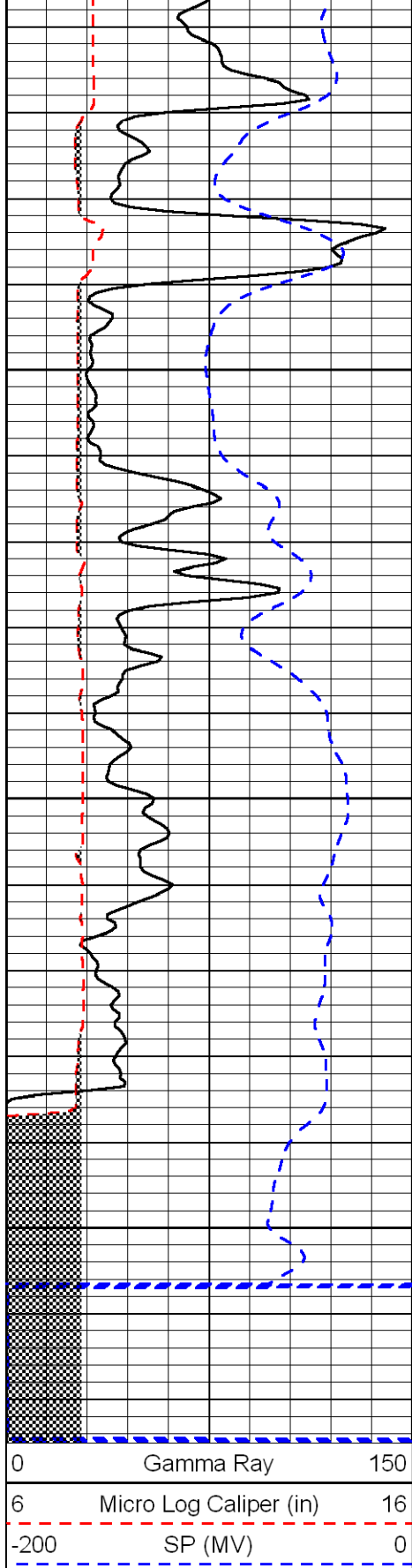
-32

-32

-33

-31

-32



LSPD  
(ft/min)