



# Dual Induction Log

DIGITAL LOG (785) 625-3858

API No.	15-095-22,199-00-00	
Company	Messenger Petroleum, Inc.	
Well	Schwartz No. 1	
Field	Willowdale (Revival)	
County	Kingman	State
		Kansas
Location	495' FSL & 2145' FWL	
Sec: 11	Twp: 29S	Rge: 9W
Permanent Datum	Ground Level	Elevation 1696
Log Measured From	Kelly Bushing	9 Ft. Above Perm. Datum
Drilling Measured From	Kelly Bushing	
		Other Services CNL/CDL
		Elevation K.B. 1705 D.F. 1696 G.L. 1696

Date	12/10/2009
Run Number	One
Depth Driller	4512
Depth Logger	4515
Bottom Logged Interval	4513
Top Log Interval	200
Casing Driller	8.625 @ 222
Casing Logger	222
Bit Size	7.875
Type Fluid in Hole	Chemical
Salinity, ppm CL	6,000
Density / Viscosity	9.4 60
pH / Fluid Loss	9.5 10.8
Source of Sample	Flowline
Rm @ Meas. Temp	.8 @ 65
Rmf @ Meas. Temp	.6 @ 65
Rmc @ Meas. Temp	1.08 @ 65
Source of Rmf / Rmc	Charts
Rm @ BHT	.42 @ 123
Operating Rig Time	3 Hours
Max Rec. Temp. F	123
Equipment Number	10
Location	Hays
Recorded By	Jason Wellbrock
Witnessed By	Jon Messenger

<<< Fold Here >>>

All interpretations are opinions based on inferences from electrical or other measurements and we cannot and do not guarantee the accuracy or correctness of any interpretation, and we shall not, except in the case of gross or willful negligence on our part, be liable or responsible for any loss, costs, damages, or expenses incurred or sustained by anyone resulting from any interpretation made by any of our officers, agents or employees. These interpretations are also subject to our general terms and conditions set out in our current Price Schedule.

### Comments

Thank you for using Log-Tech, Inc.  
(785) 625-3858

Pratt E to the Zenda Blacktop, 8 S, 1/2 E, N Into

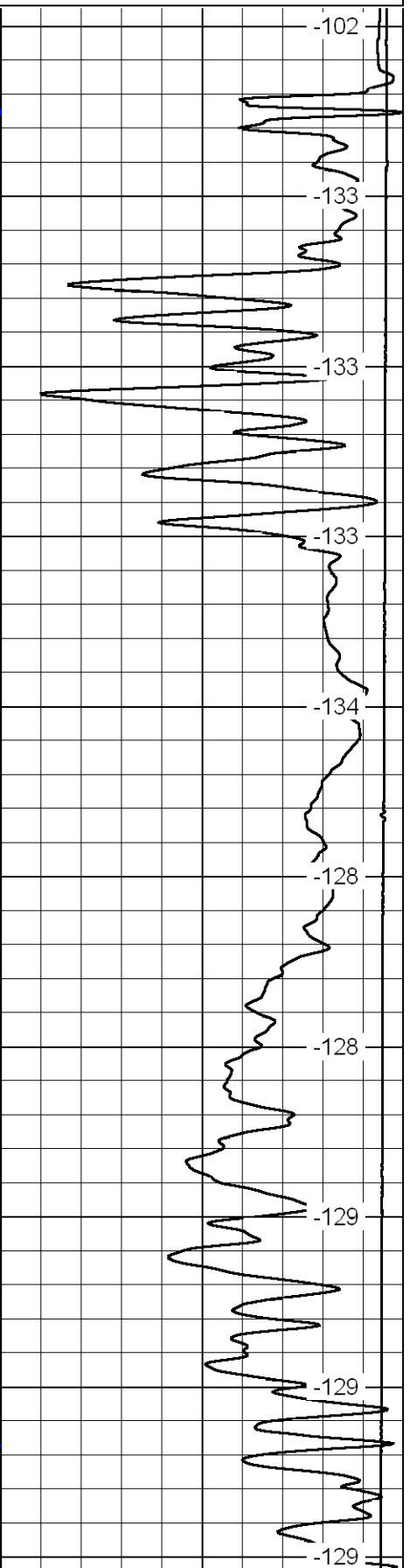
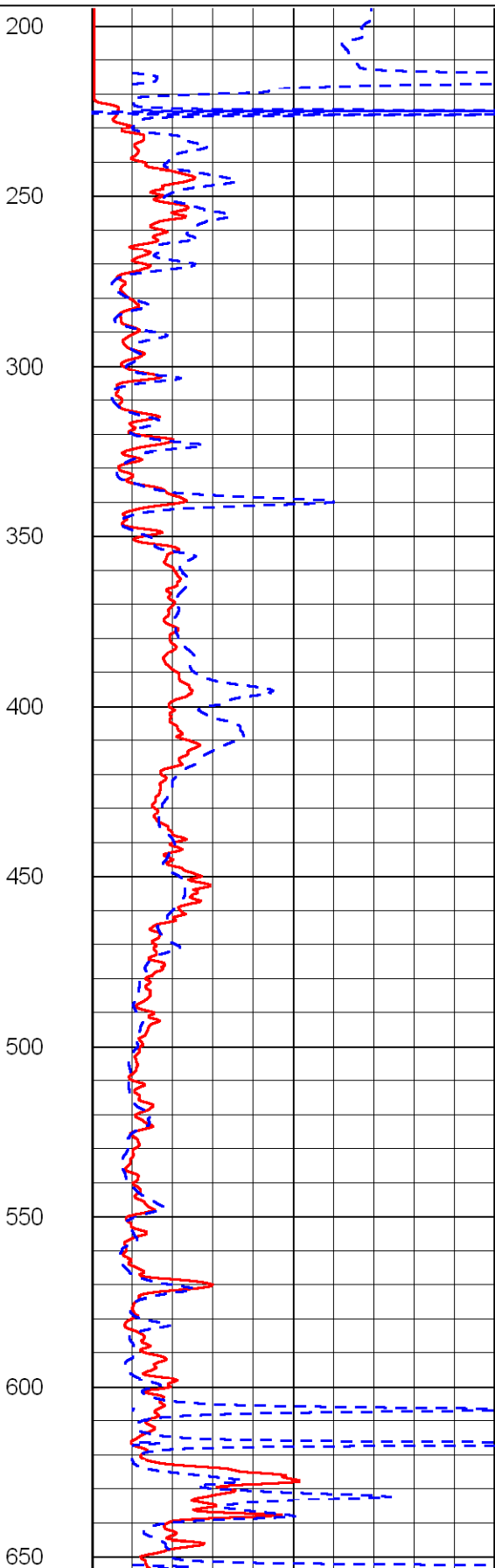
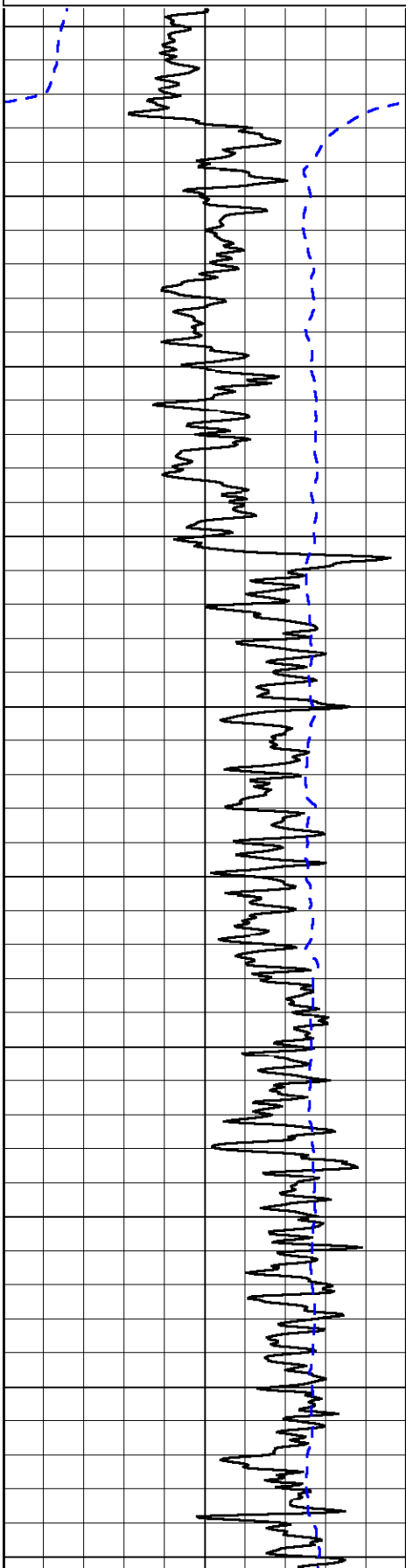
Database File: c:\warrior\data\messemerger\_schwartz no. 1\messengerhd.db  
 Dataset Pathname: dil/mess2in  
 Presentation Format: dil2in  
 Dataset Creation: Fri Dec 11 01:10:15 2009  
 Charted by: Depth in Feet scaled 1:600

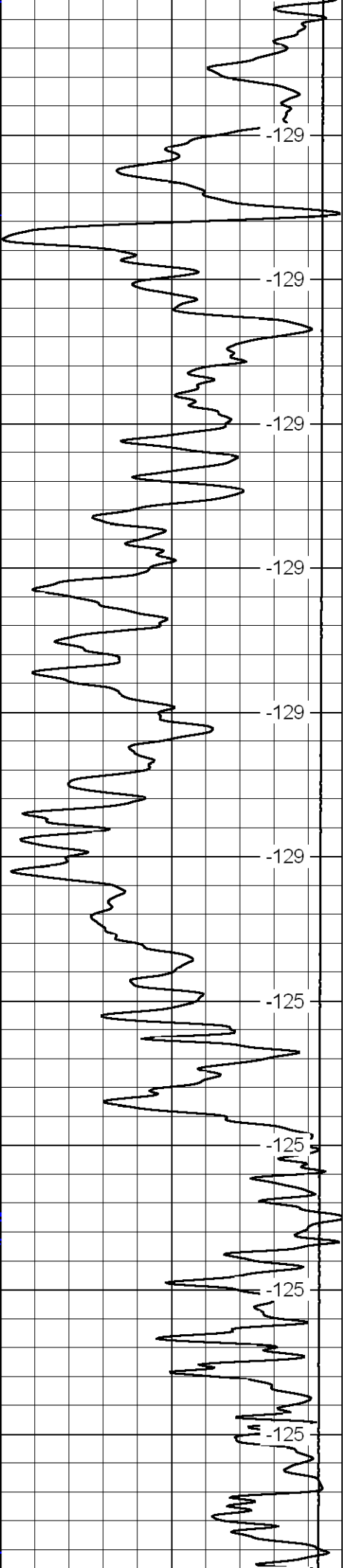
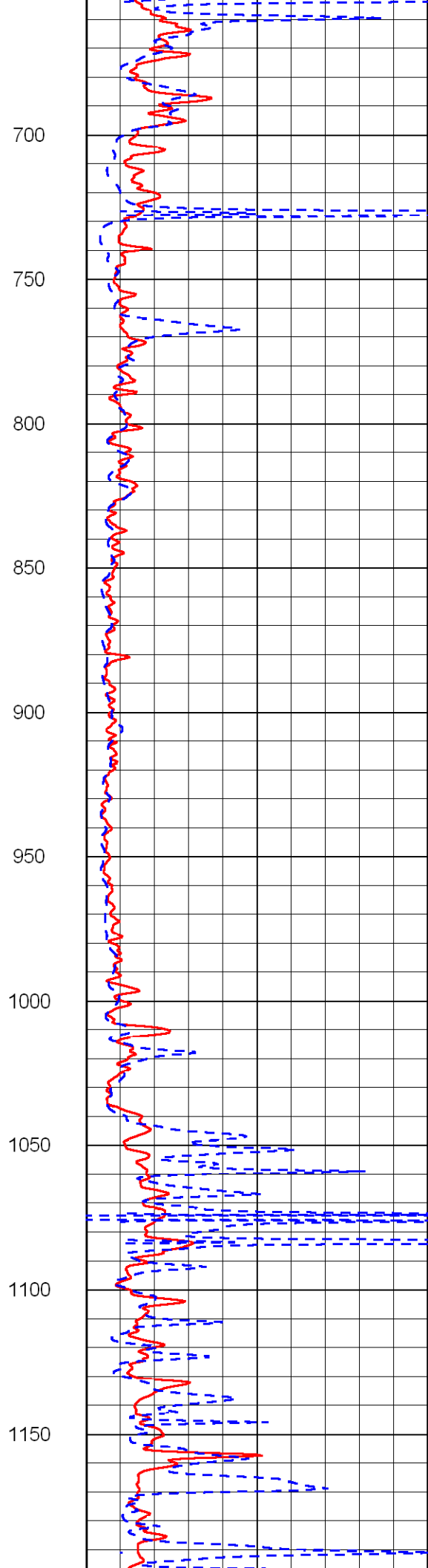
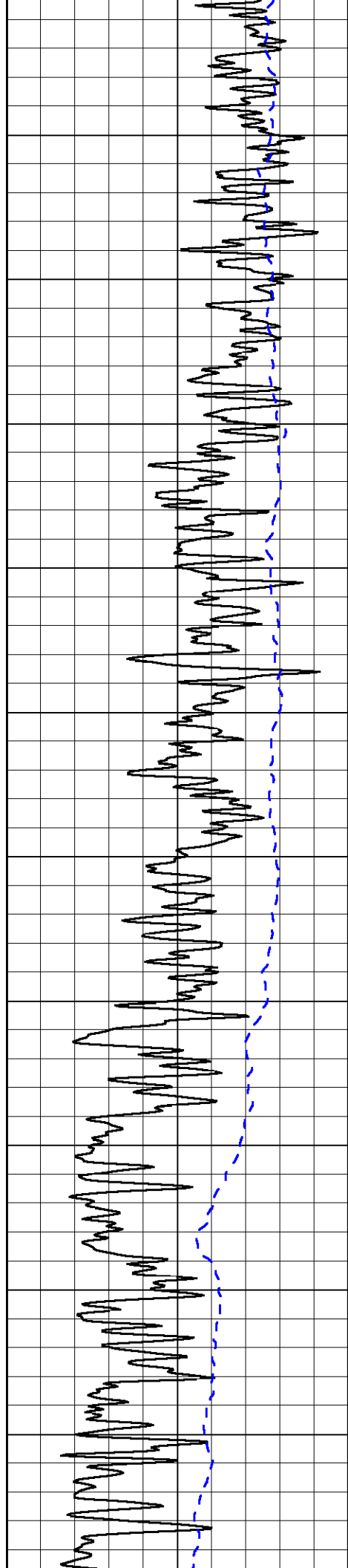
0 Gamma Ray 150  
-200 SP (MV) 0

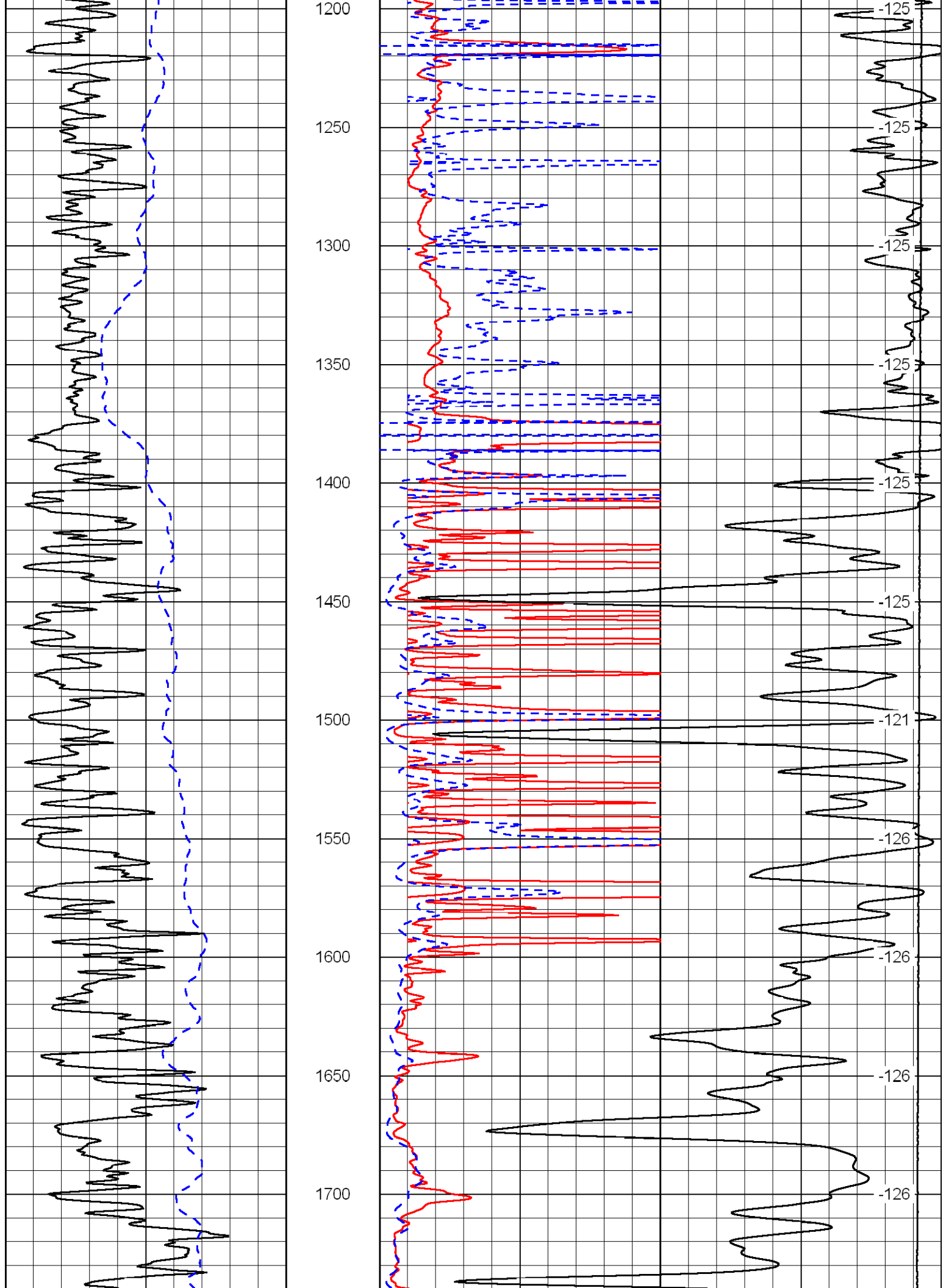
0 Shallow Resistivity (Ohm-m) 50  
0 Deep Resistivity (Ohm-m) 50  
1000 Conductivity (mmho/m) 0  
15000 Line Tension (lb) 0

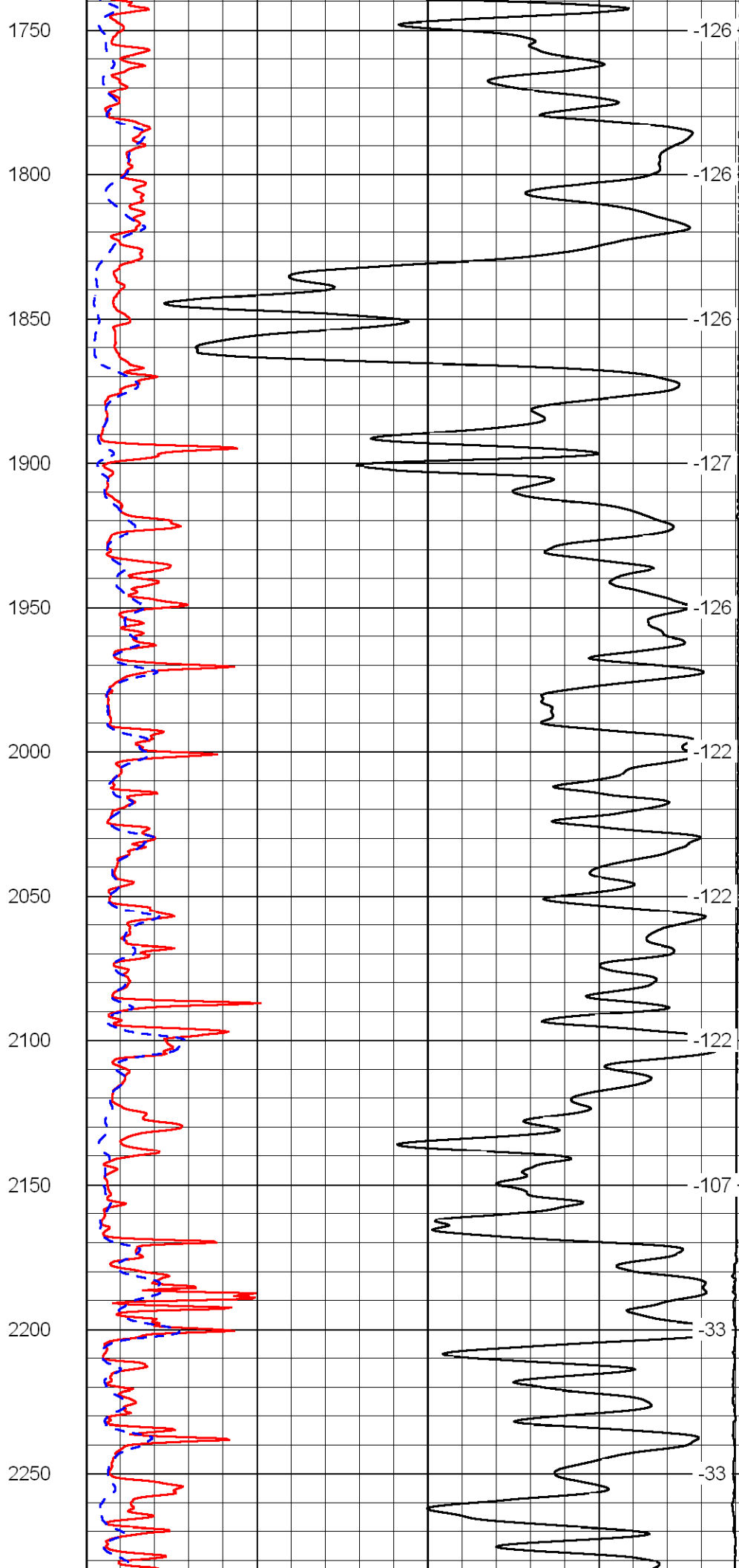
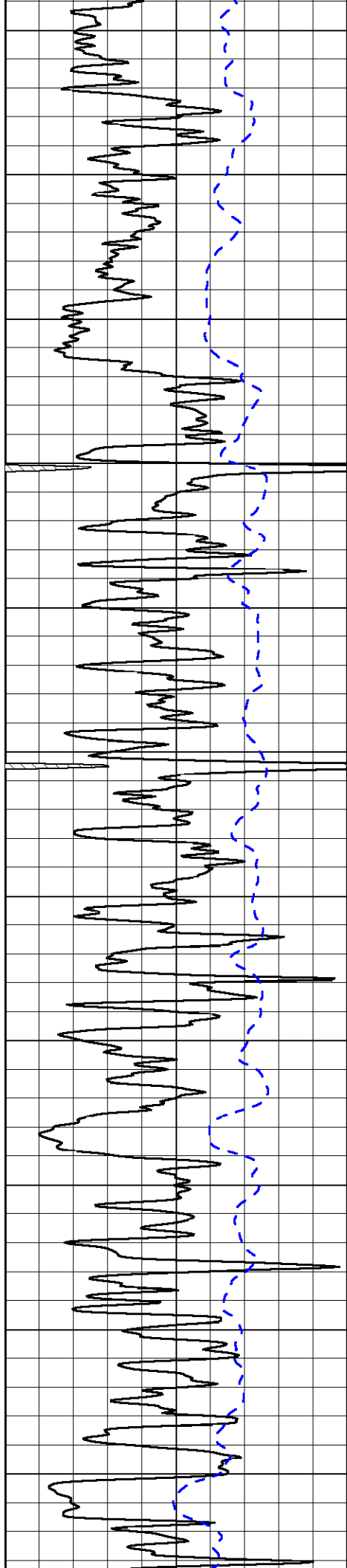
LSPD  
(ft/min)  
0

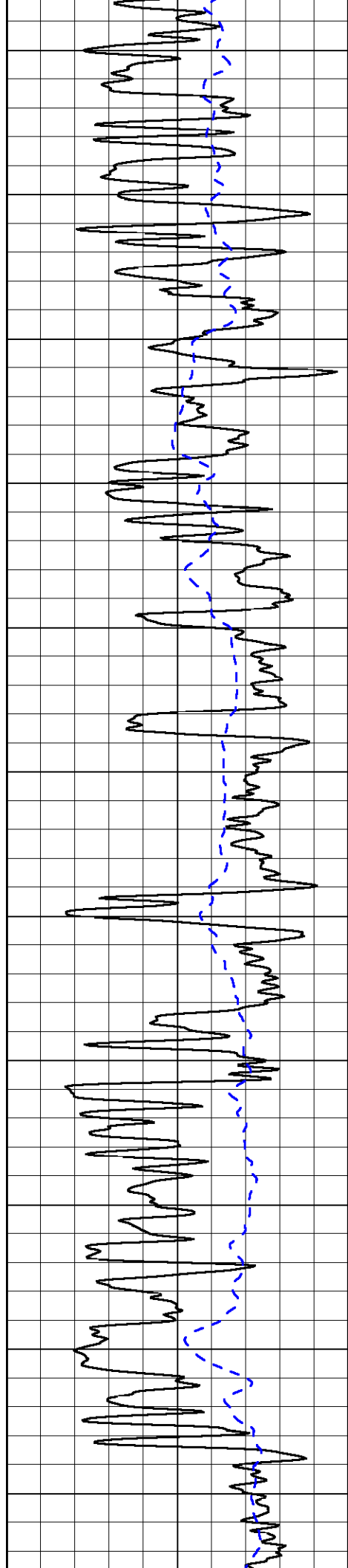
Shallow Resistivity  
50 (Ohm-m) 500  
50 Deep Resistivity (Ohm-m) 500



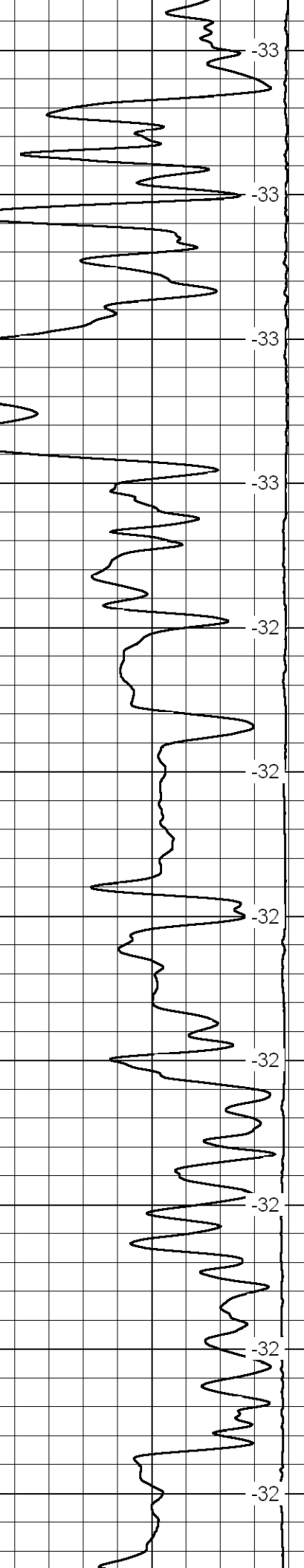
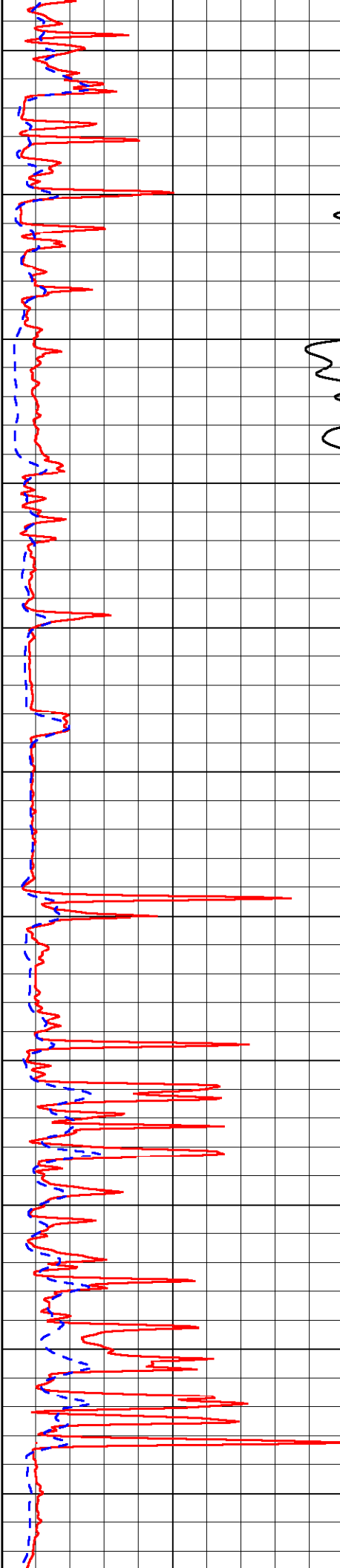




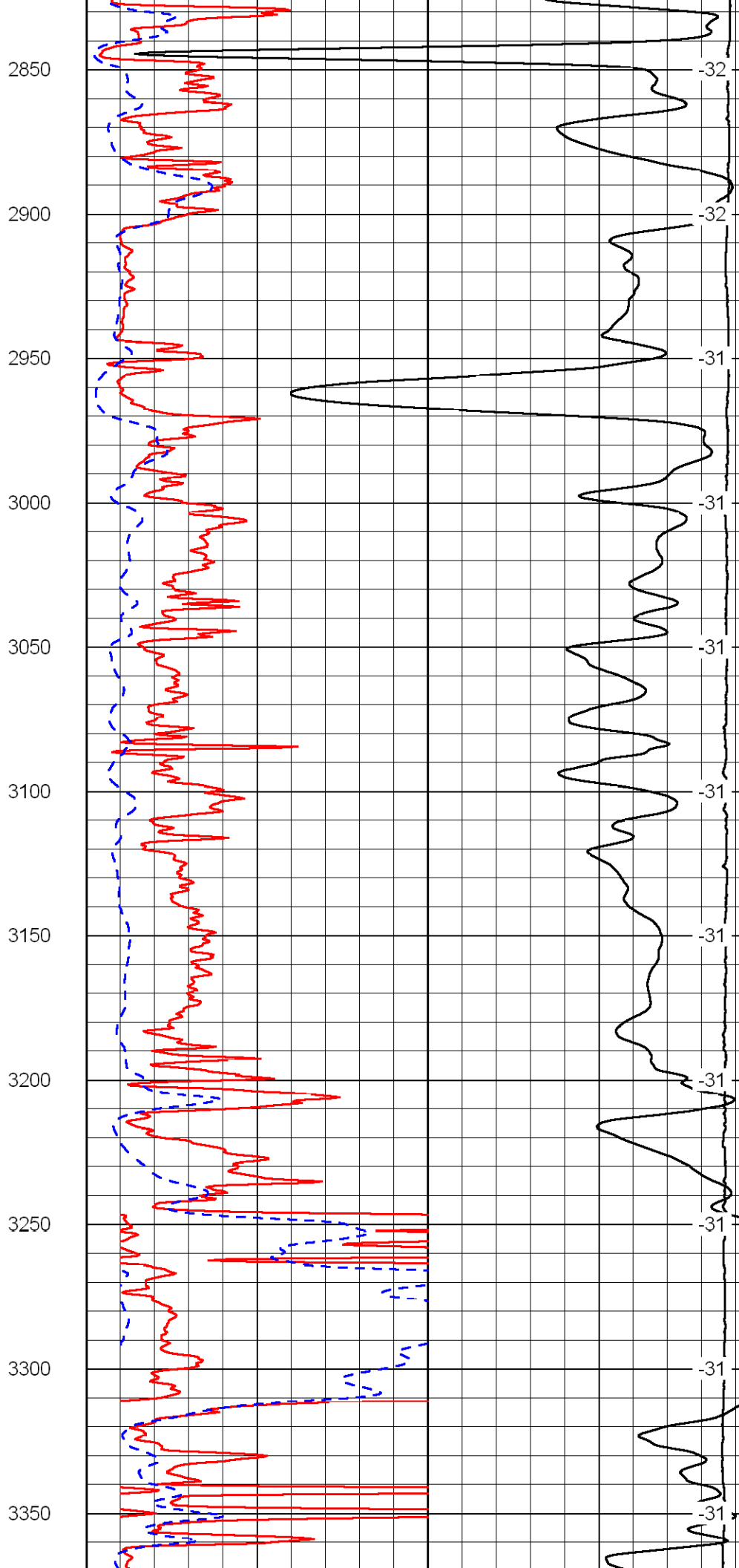
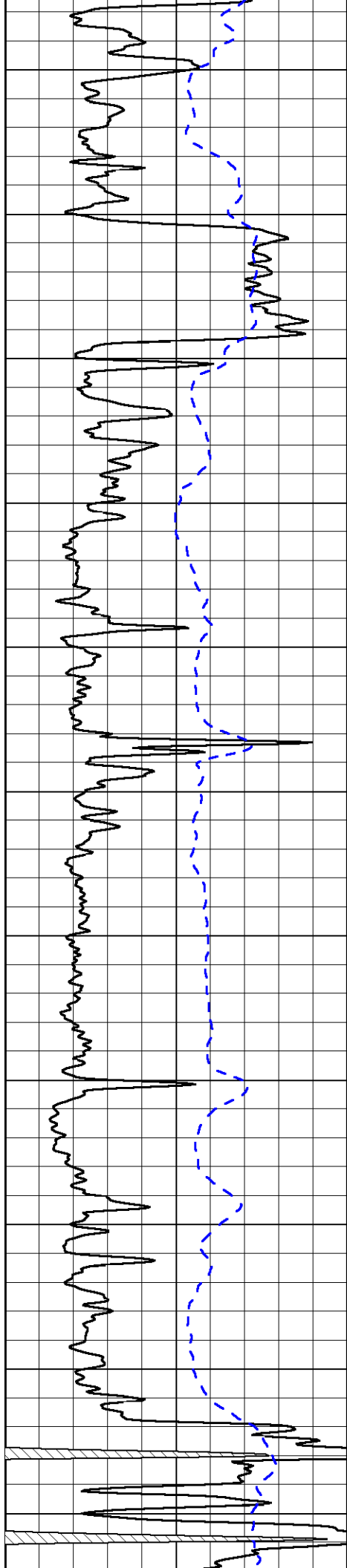


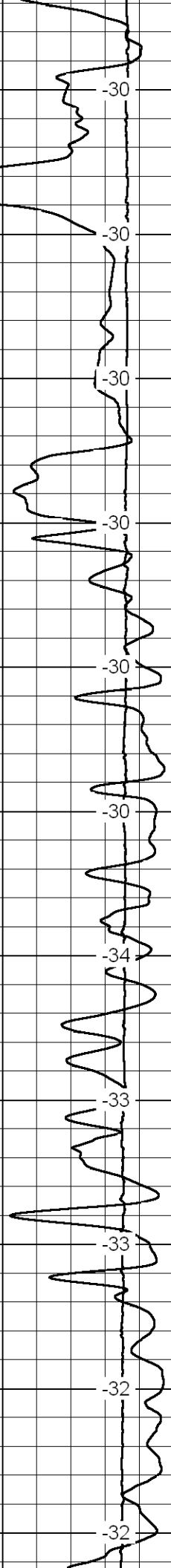
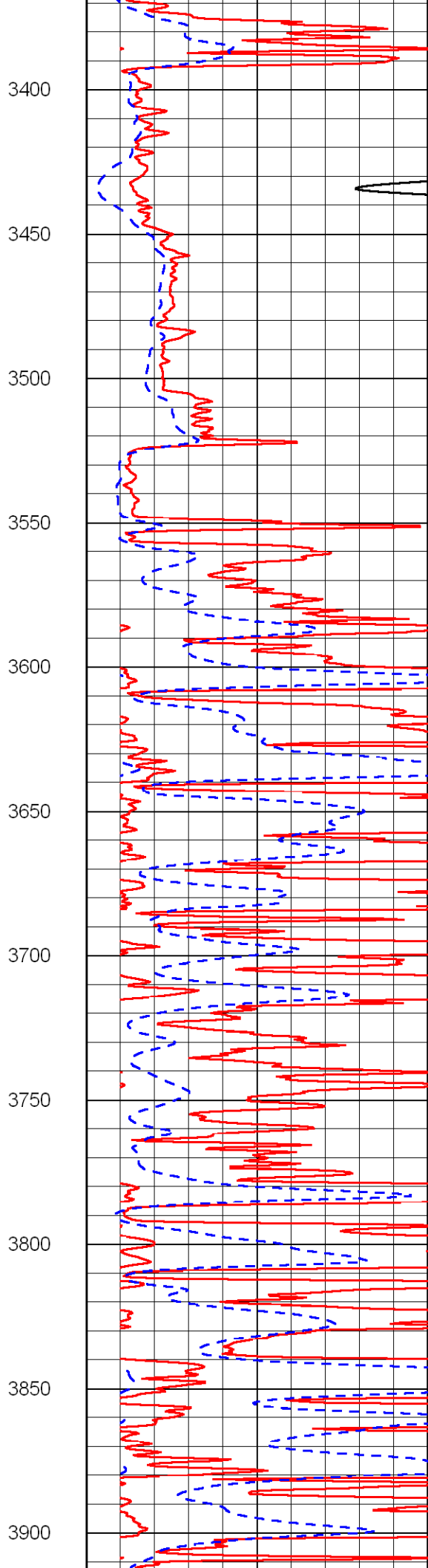
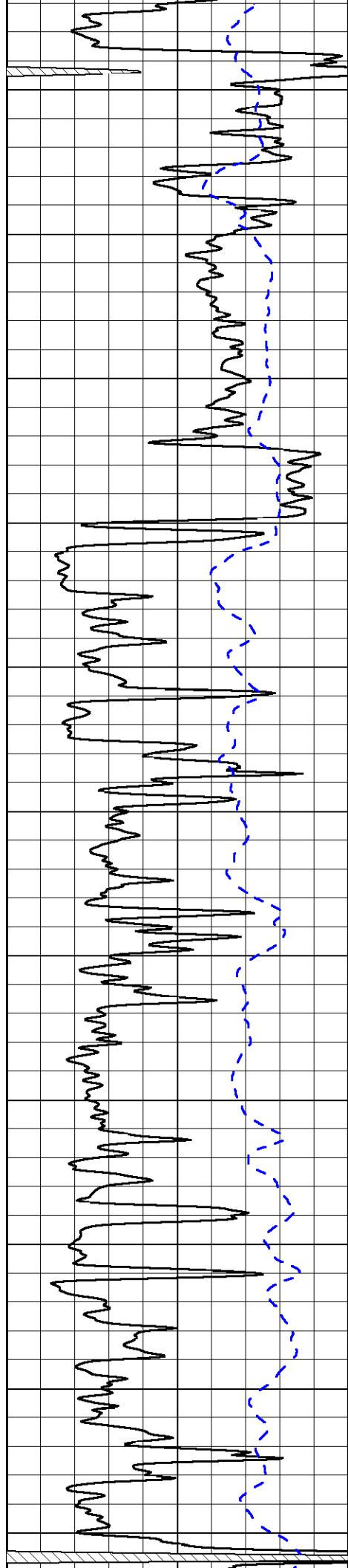


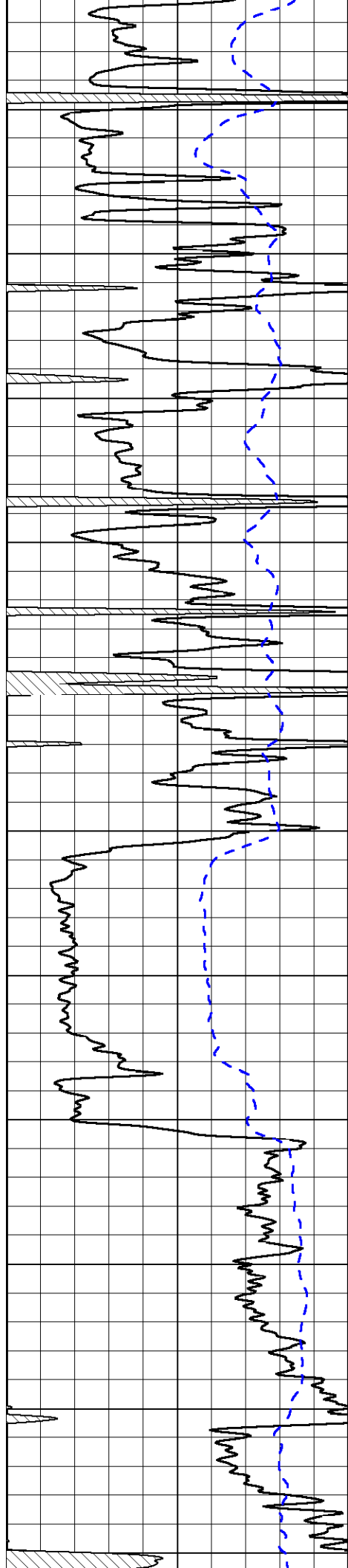
2300  
2350  
2400  
2450  
2500  
2550  
2600  
2650  
2700  
2750  
2800



-33  
-33  
-33  
-33  
-32  
-32  
-32  
-32  
-32  
-32  
-32







3950

4000

4050

4100

4150

4200

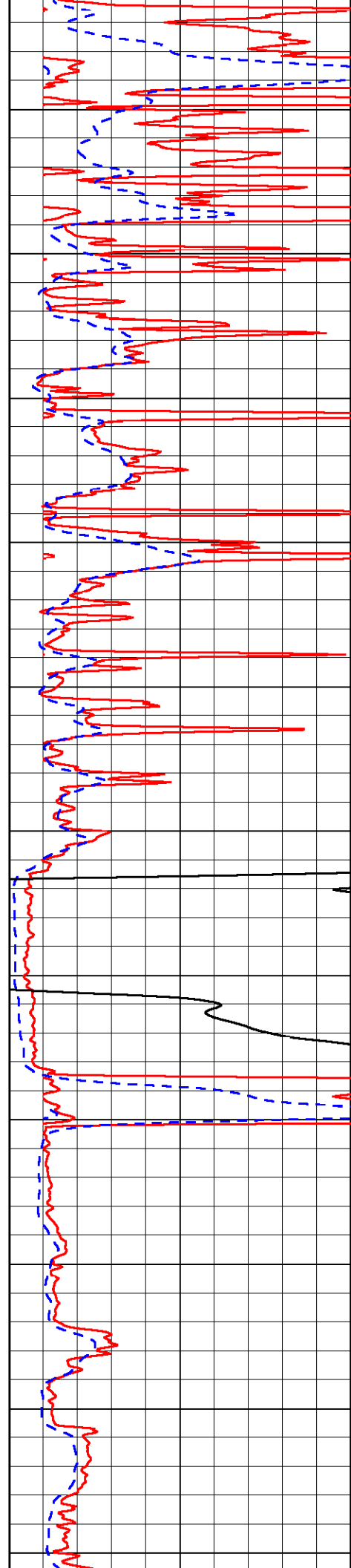
4250

4300

4350

4400

4450



-32

-32

-32

-32

-32

-33

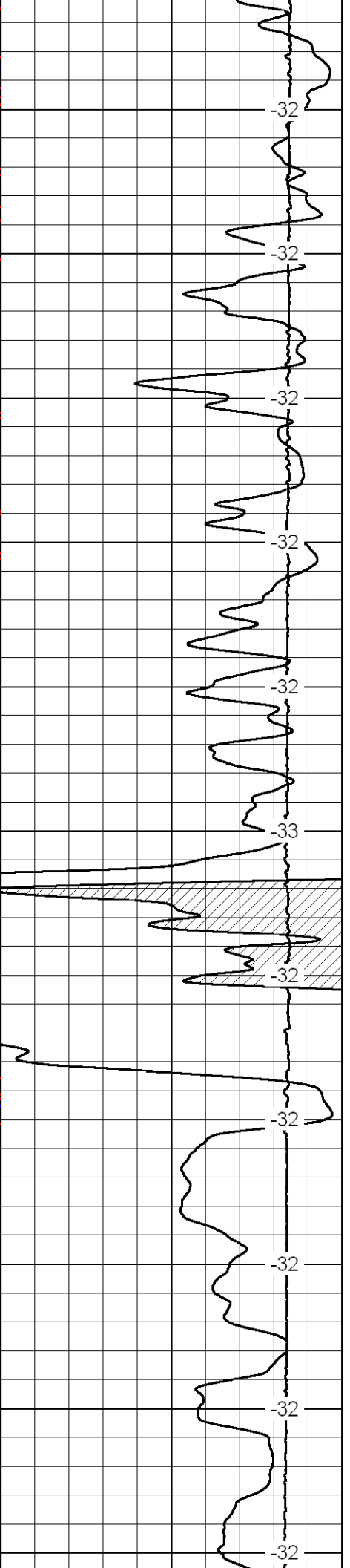
-32

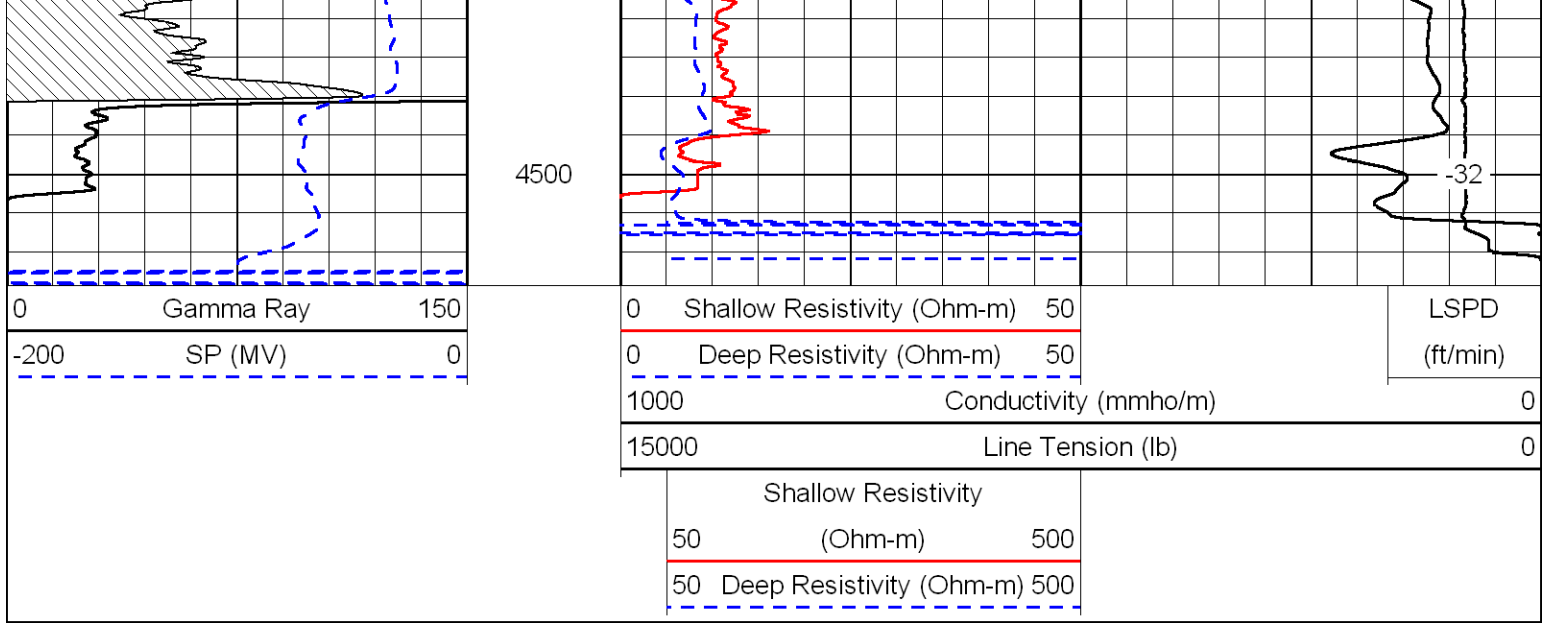
-32

-32

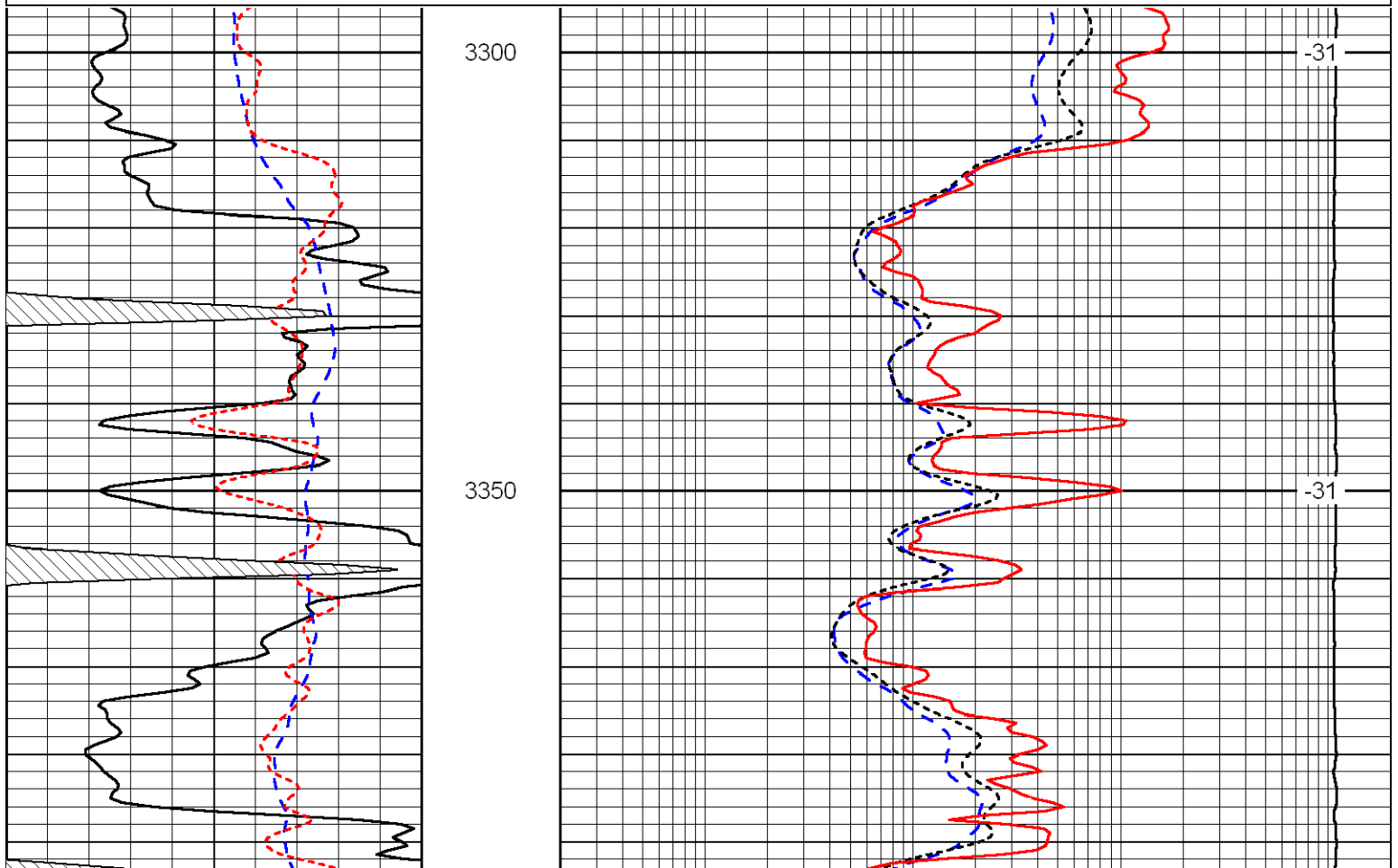
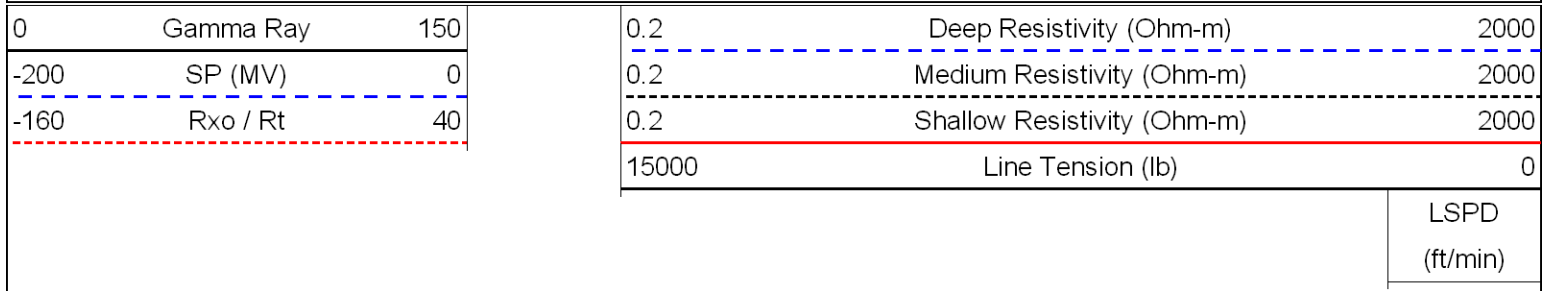
-32

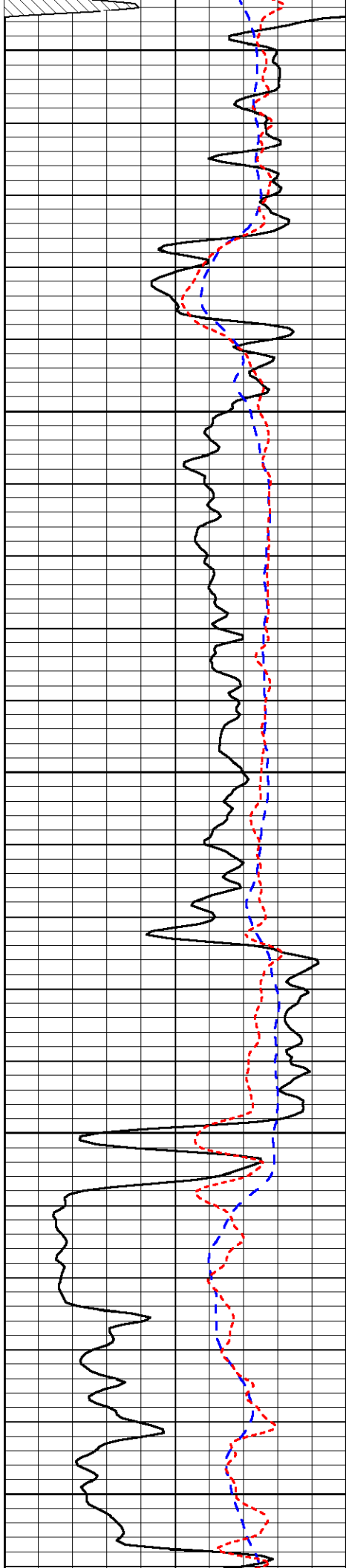
-32





Database File: c:\warrior\data\messenger\_schwartz no. 1\messengerhd.db  
 Dataset Pathname: dil/mess2in  
 Presentation Format: dil  
 Dataset Creation: Fri Dec 11 01:10:15 2009  
 Charted by: Depth in Feet scaled 1:240





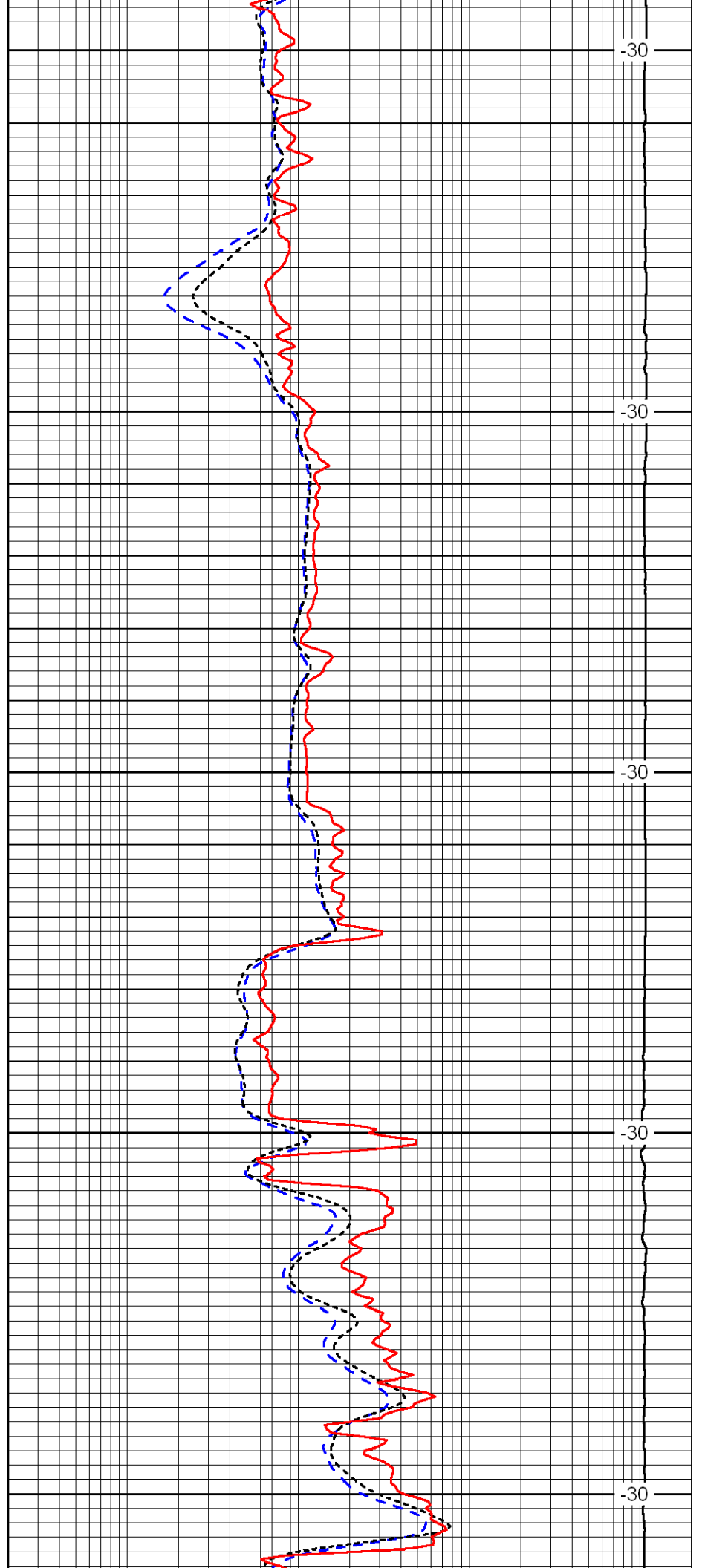
3400

3450

3500

3550

3600



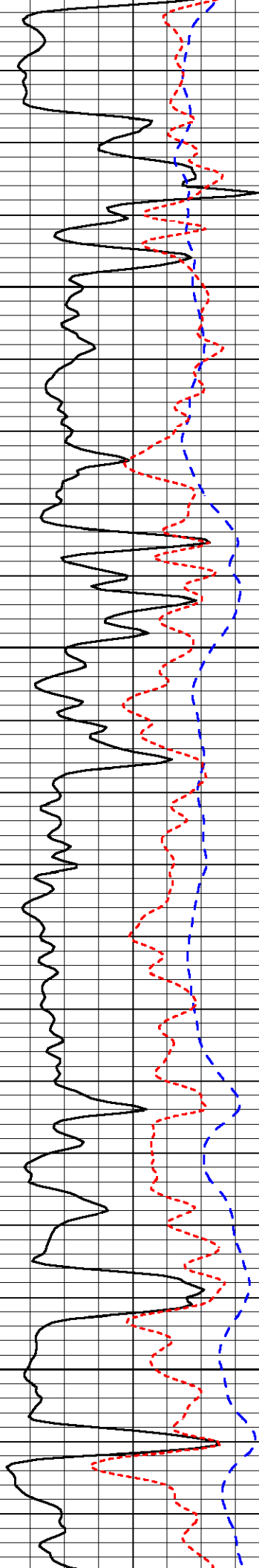
-30

-30

-30

-30

-30

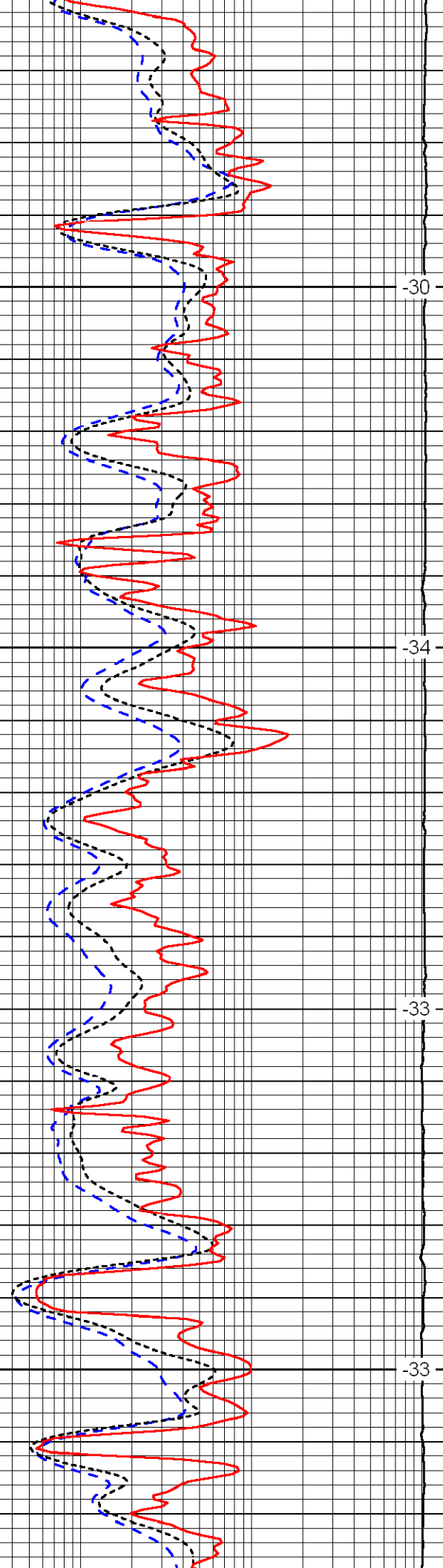


3650

3700

3750

3800

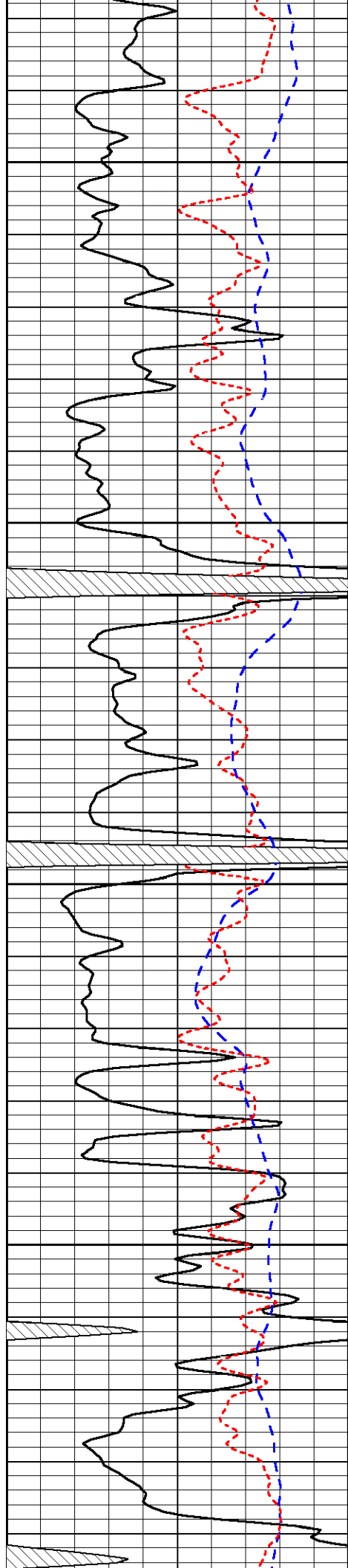


-30

-34

-33

-33

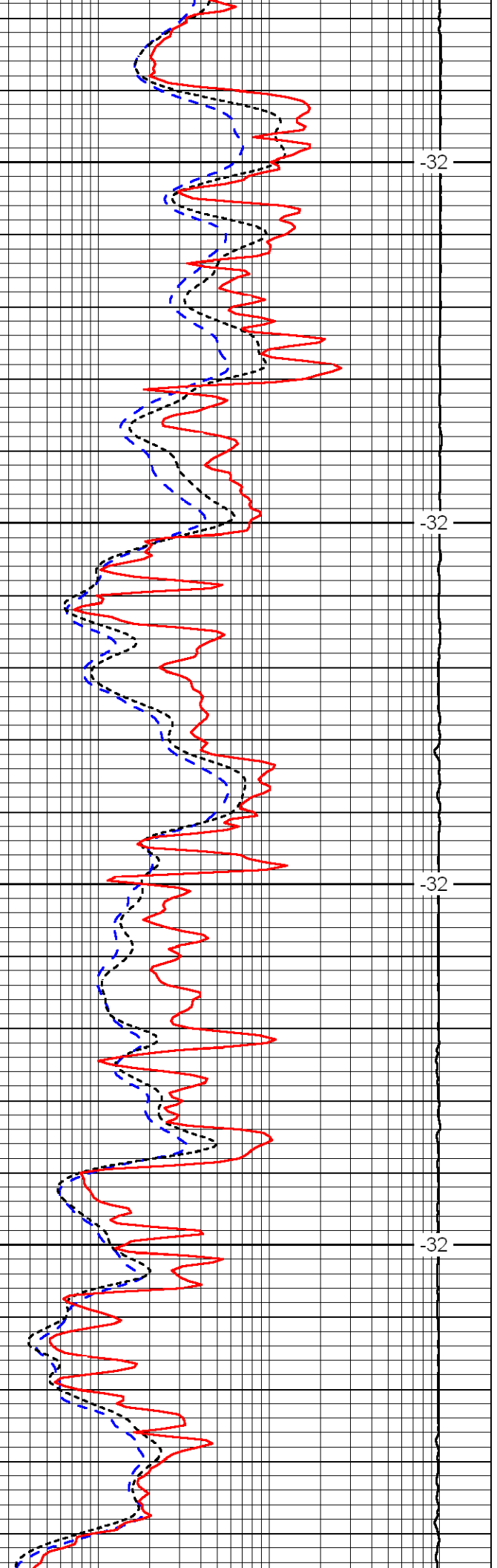


3850

3900

3950

4000

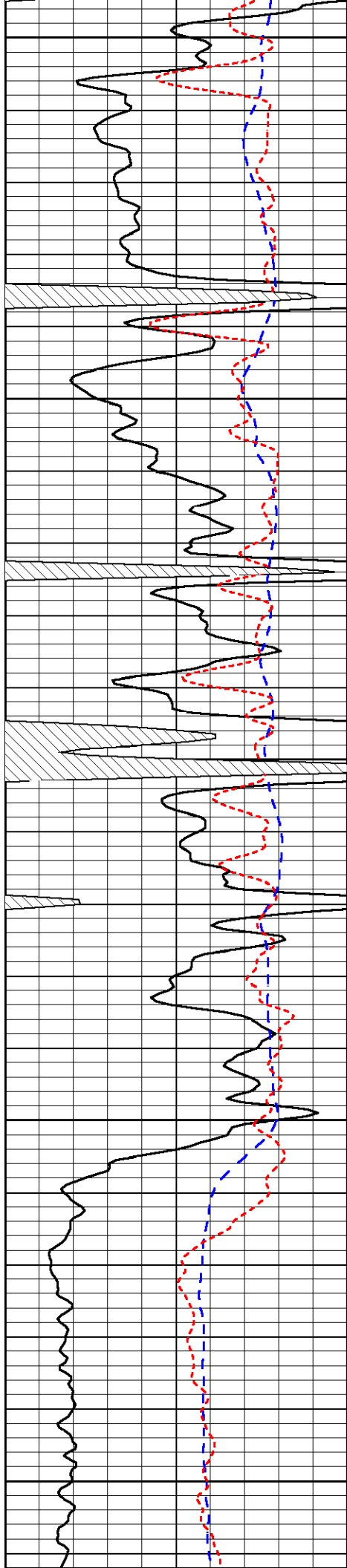


-32

-32

-32

-32



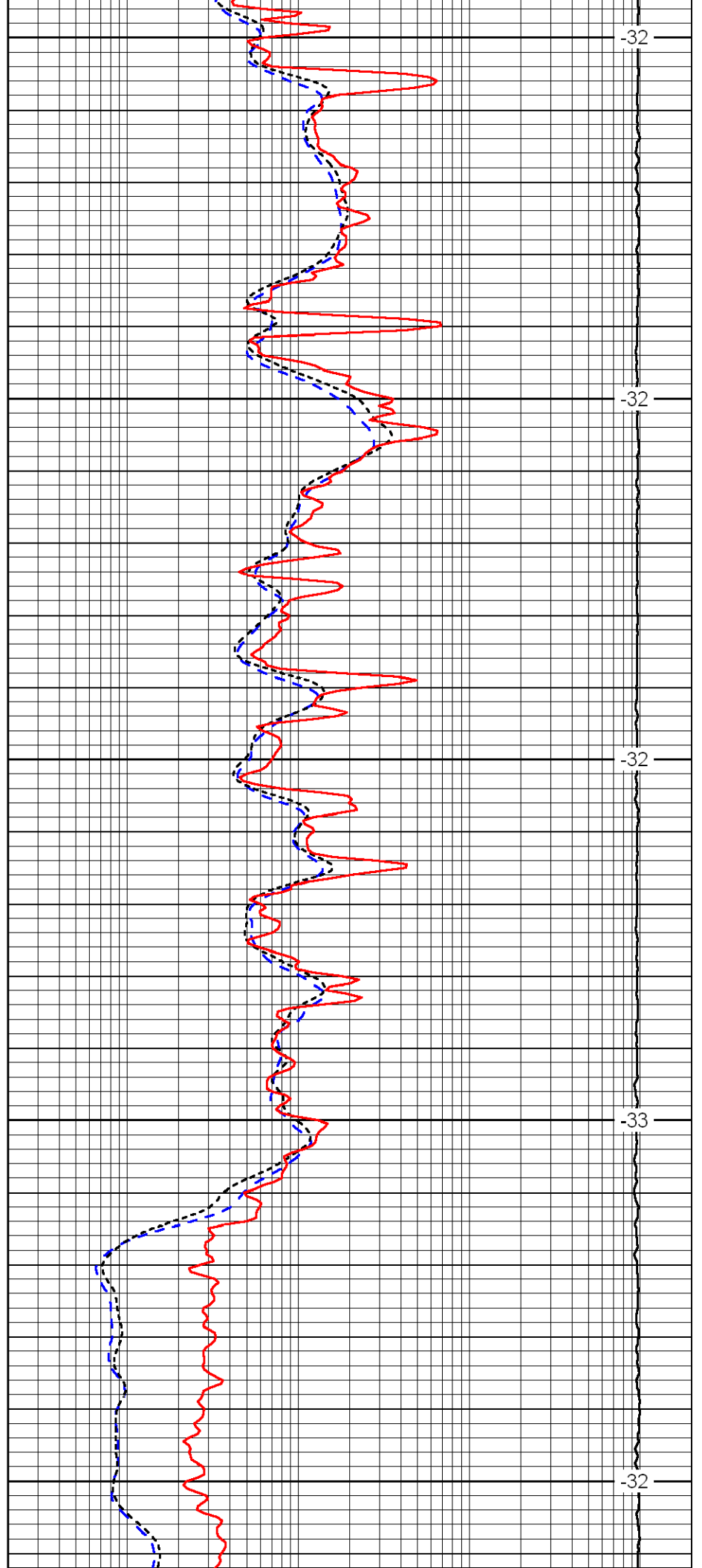
4050

4100

4150

4200

4250



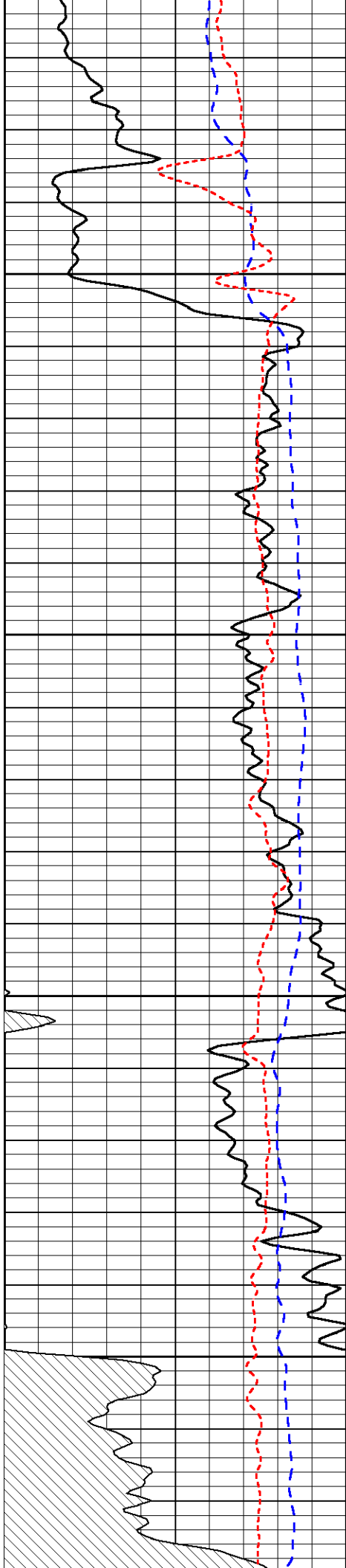
-32

-32

-32

-33

-32

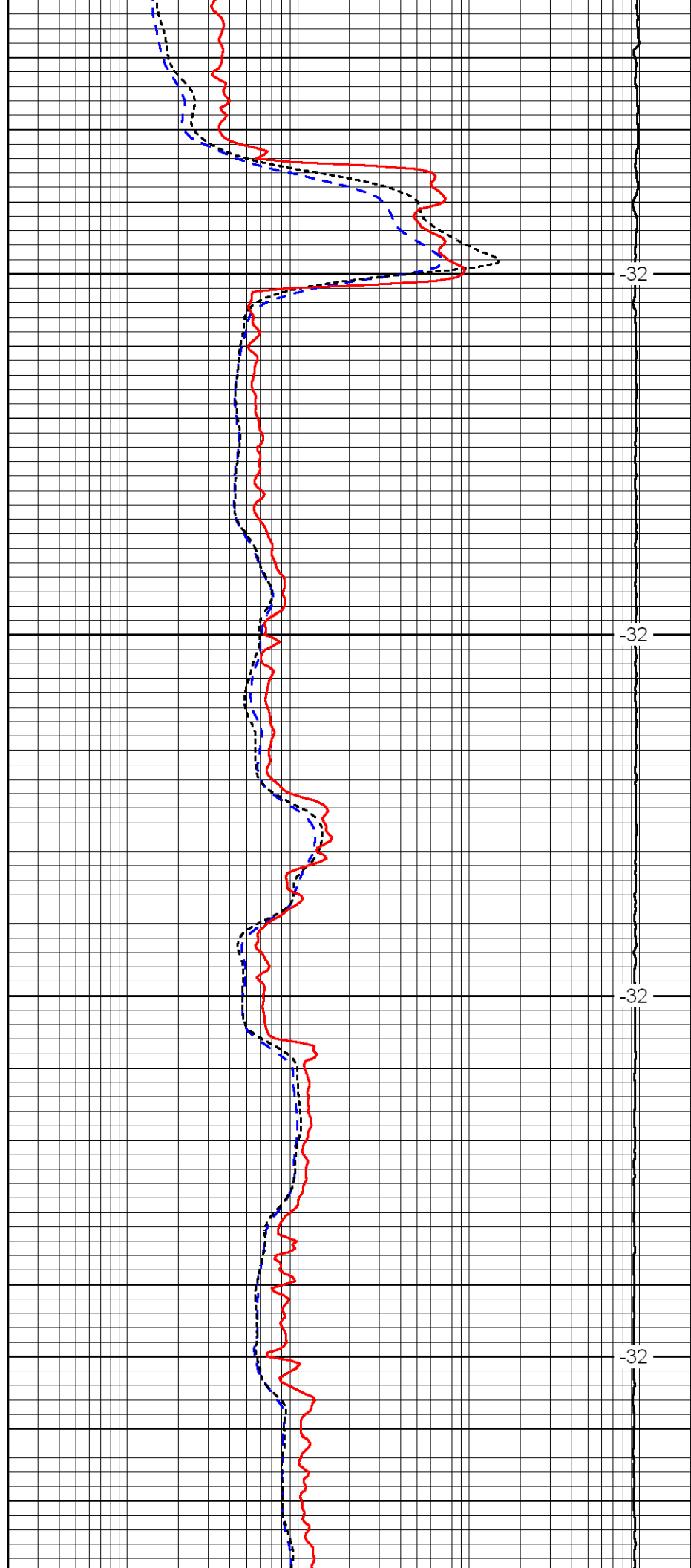


4300

4350

4400

4450

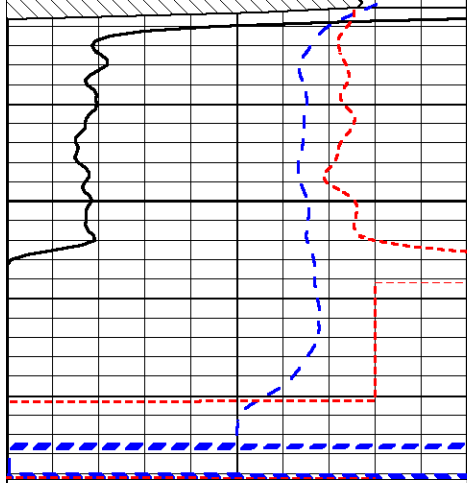


-32

-32

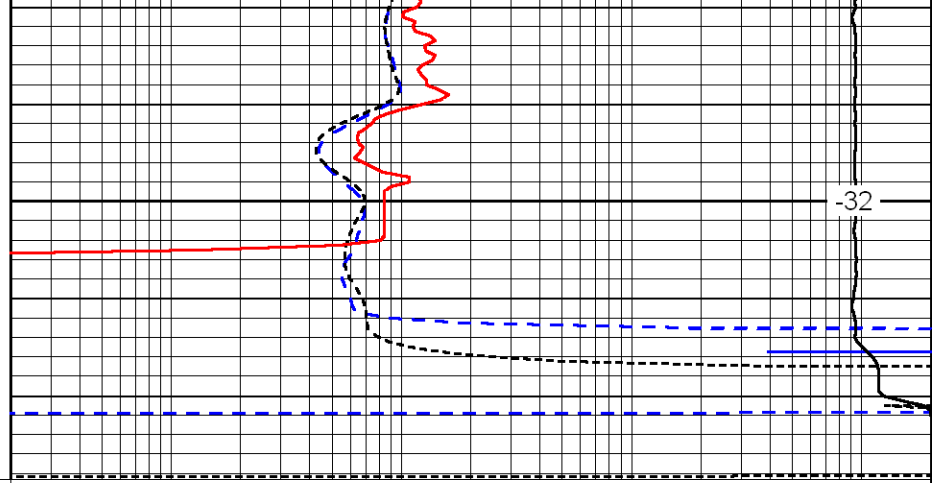
-32

-32



4500

0	Gamma Ray	150
-200	SP (MV)	0
-160	Rxo / Rt	40



32

0.2	Deep Resistivity (Ohm-m)	2000
0.2	Medium Resistivity (Ohm-m)	2000
0.2	Shallow Resistivity (Ohm-m)	2000
15000	Line Tension (lb)	0

LSPD  
(ft/min)