



Microresistivity Log

DIGITAL LOG (785) 625-3858

API No.	15-007-23,467-00-00	
Company	Val Energy, Inc.	
Well	Paxton Kubik No. 10-28	
Field	Landis	
County	Barber	State
		Kansas
Location	NE - SE - NE 3630 FSL & 330' FEL	
Sec: 28	Twp: 34 S	Rge: 11 W
Permanent Datum	Ground Level	Elevation 1372
Log Measured From	Kelly Bushing	11 Ft. Above Perm. Datum
Drilling Measured From	Kelly Bushing	
		Other Services CNL/CDL DIL
		Elevation K.B. 1383 D.F. 1372 G.L. 1372

Date	11/24/2009
Run Number	Two
Depth Driller	4825
Depth Logger	4800
Bottom Logged Interval	4799
Top Log Interval	3000
Casing Driller	8.625 @ 206
Casing Logger	206
Bit Size	7.875
Type Fluid in Hole	Chemical
Salinity, ppm CL	3,000
Density / Viscosity	9.3 56
pH / Fluid Loss	10.0 9.2
Source of Sample	Flowline
Rm @ Meas. Temp	1.80 @ 60
Rmf @ Meas. Temp	1.35 @ 60
Rmc @ Meas. Temp	2.43 @ 60
Source of Rmf / Rmc	Charts
Rm @ BHT	0.87 @ 124
Operating Rig Time	4 Hours
Max Rec. Temp. F	124
Equipment Number	15
Location	Hays
Recorded By	B. Becker
Witnessed By	Steve Vanbuskirk

<<< Fold Here >>>

All interpretations are opinions based on inferences from electrical or other measurements and we cannot and do not guarantee the accuracy or correctness of any interpretation, and we shall not, except in the case of gross or willful negligence on our part, be liable or responsible for any loss, costs, damages, or expenses incurred or sustained by anyone resulting from any interpretation made by any of our officers, agents or employees. These interpretations are also subject to our general terms and conditions set out in our current Price Schedule.

Comments

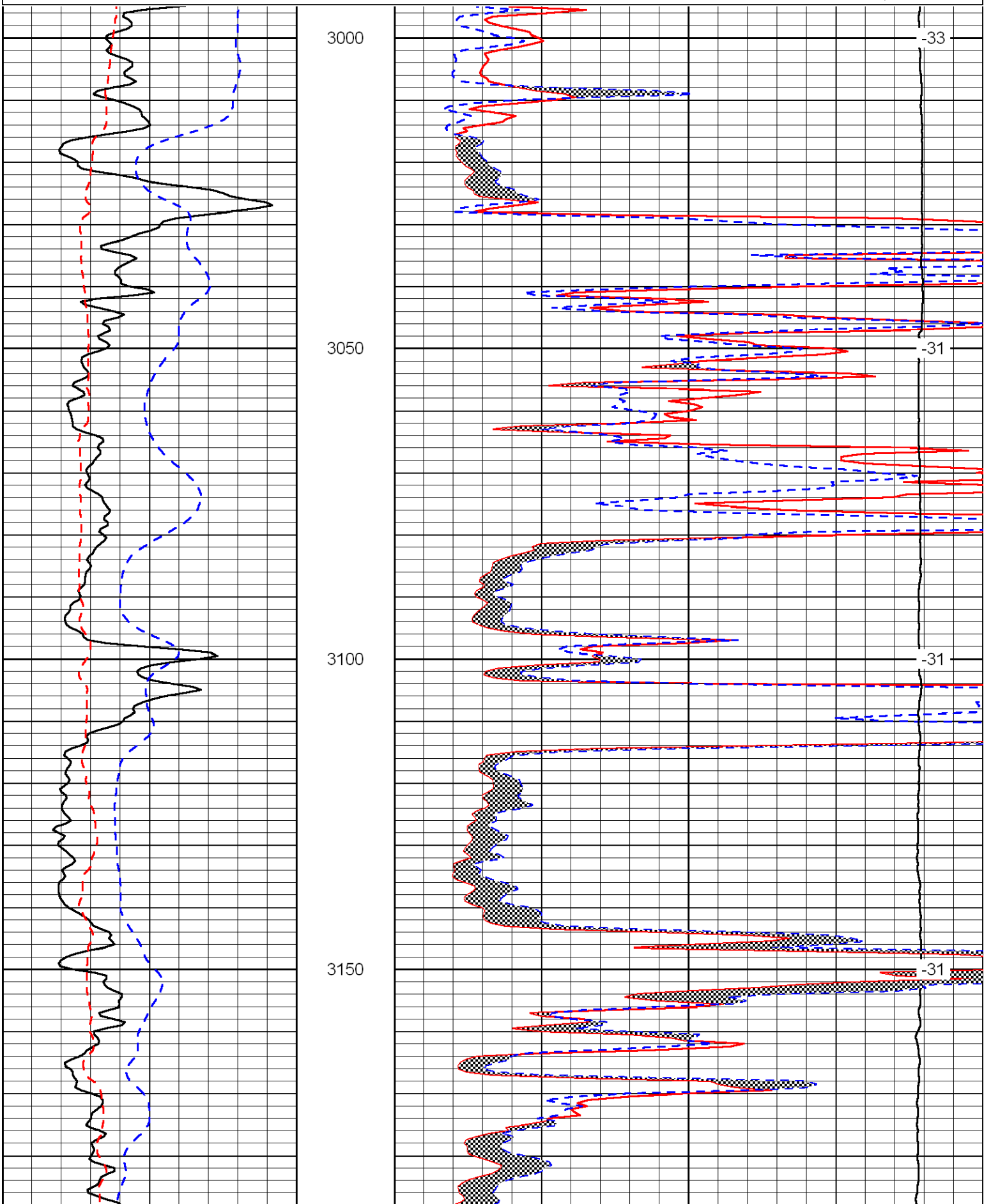
Thank you for using Log-Tech, Inc.
 (785) 625-3858
 Medicine Lodge, Ks;
 South to Rattlesnake Trail Rd;
 3 East to Red Dust Rd;
 1/2 North; West Into

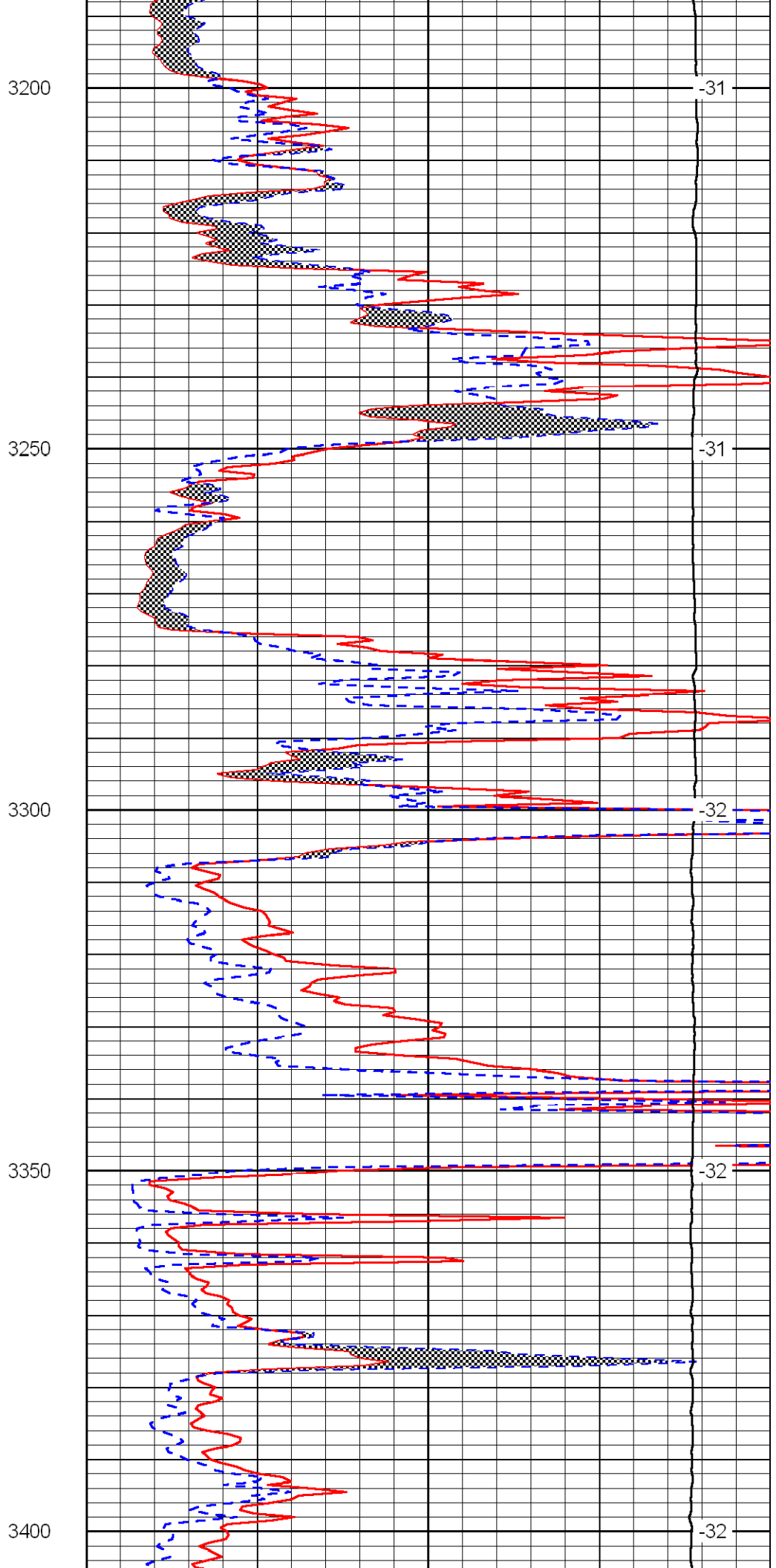
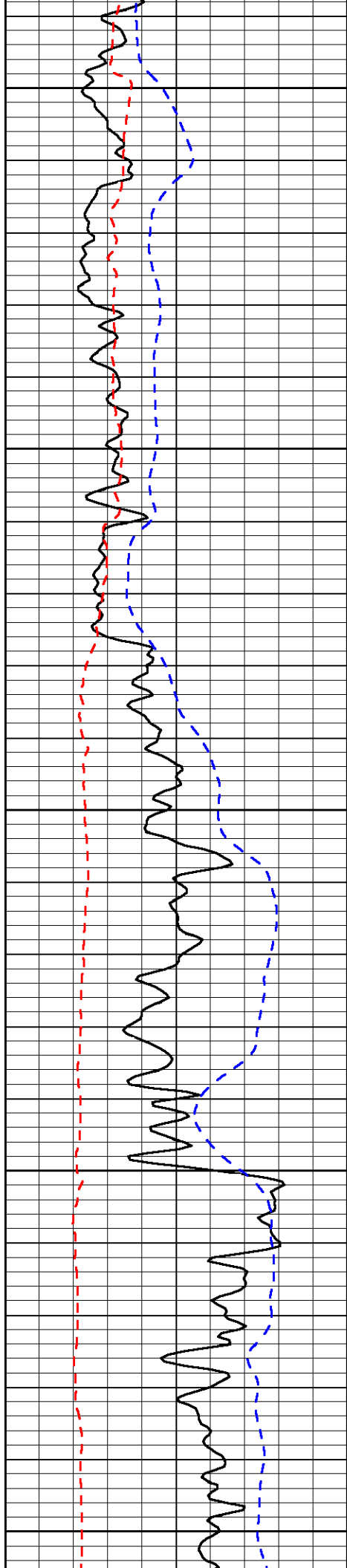
Database File: c:\warrior\data\val_paxton kubik no. 10-28\valhd.db
 Dataset Pathname: DIL\val
 Presentation Format: micro
 Dataset Creation: Tue Nov 24 23:34:46 2009
 Charted by: Depth in Feet scaled 1:240

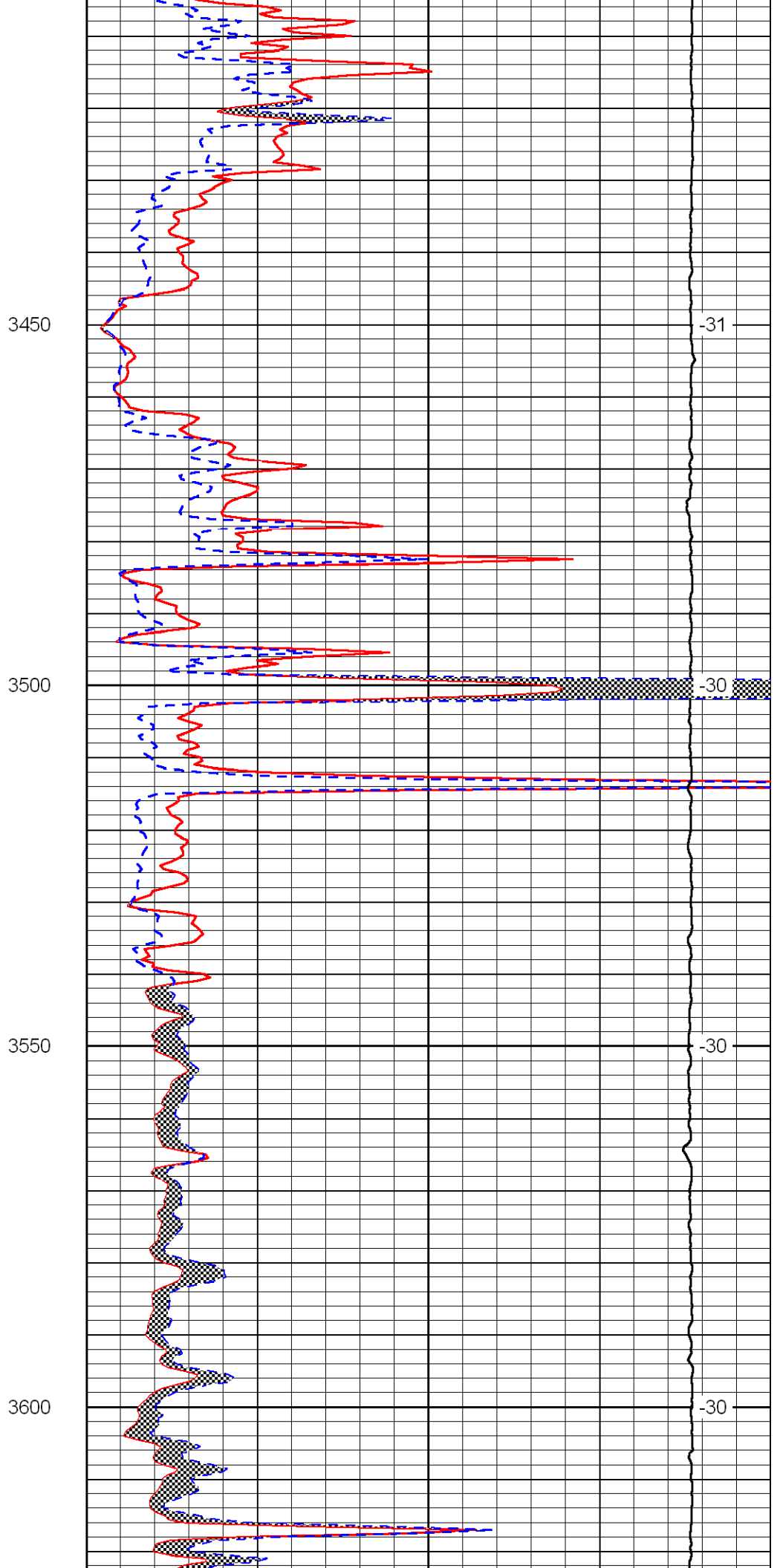
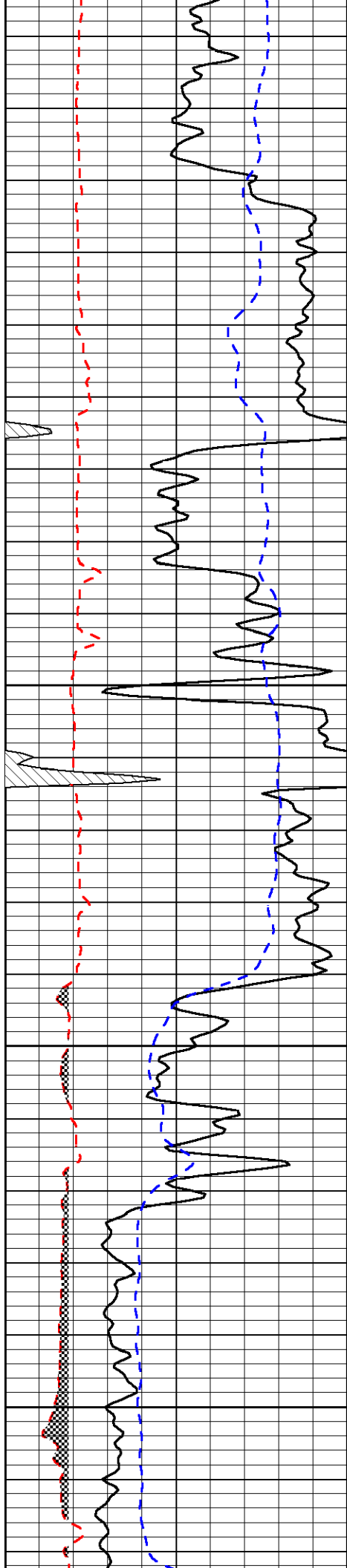
0	Gamma Ray	150
6	Micro Log Caliper (in)	16
-200	SP (MV)	0

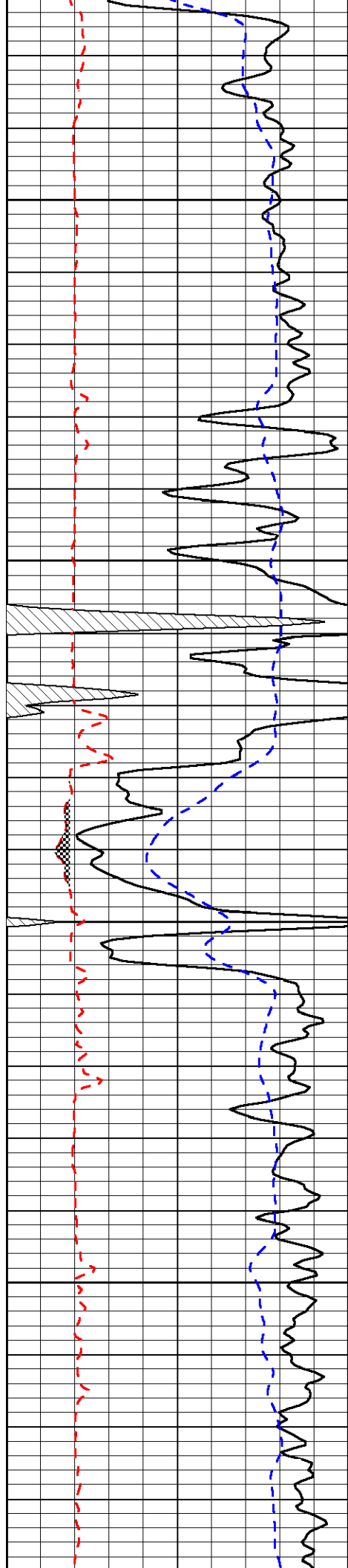
0	Micro Inverse 1 X 1 (Ohm-m)	40
0	Micro Normal 2" (Ohm-m)	40
15000	Line Weight (lb)	0

LSPD
(ft/min)







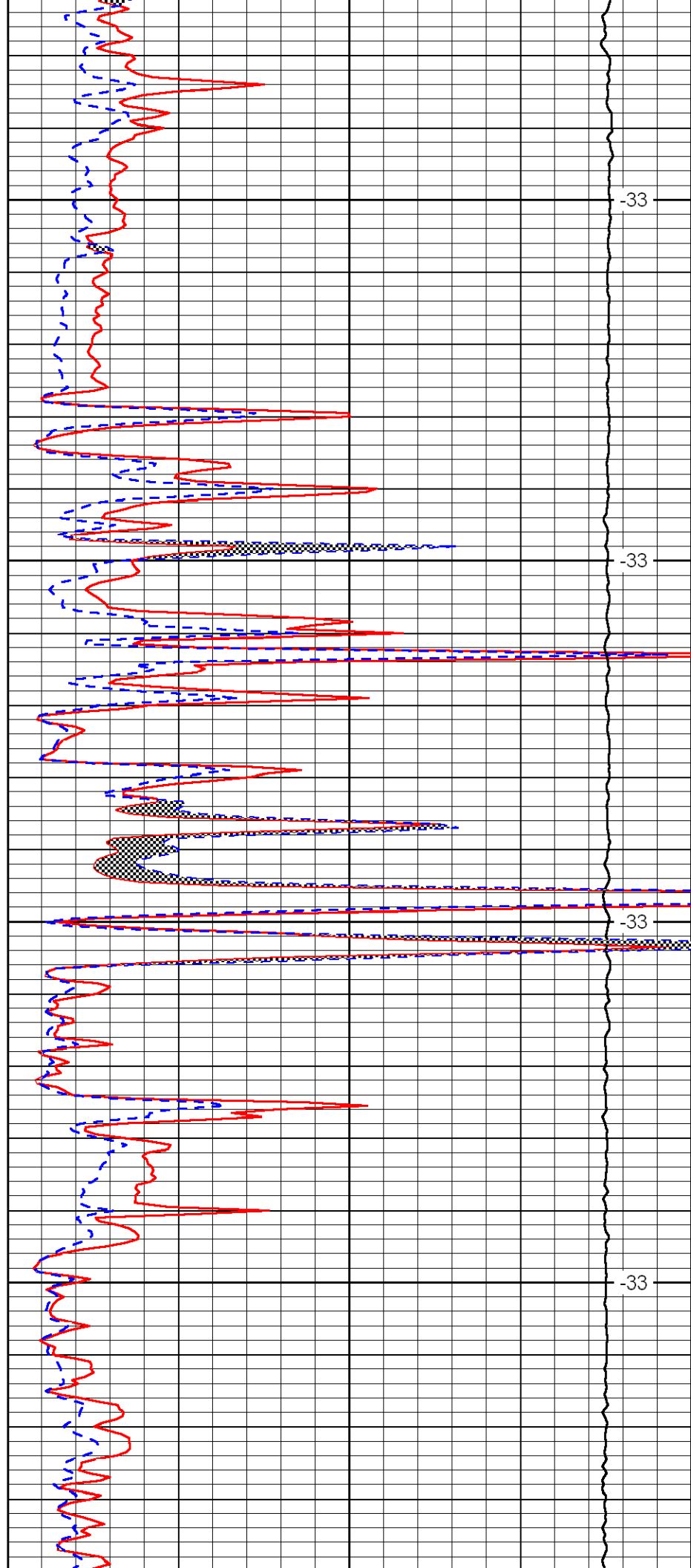


3650

3700

3750

3800

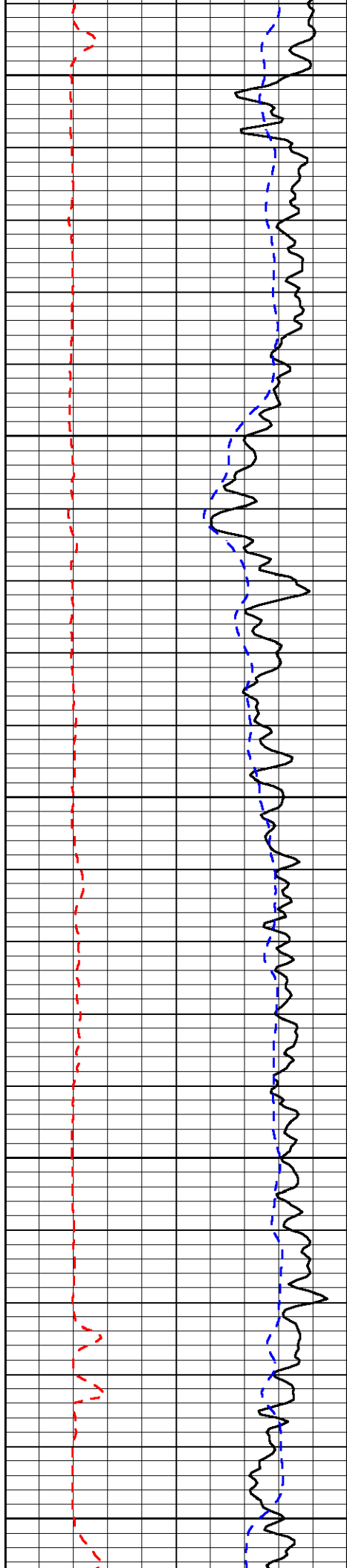


-33

-33

-33

-33



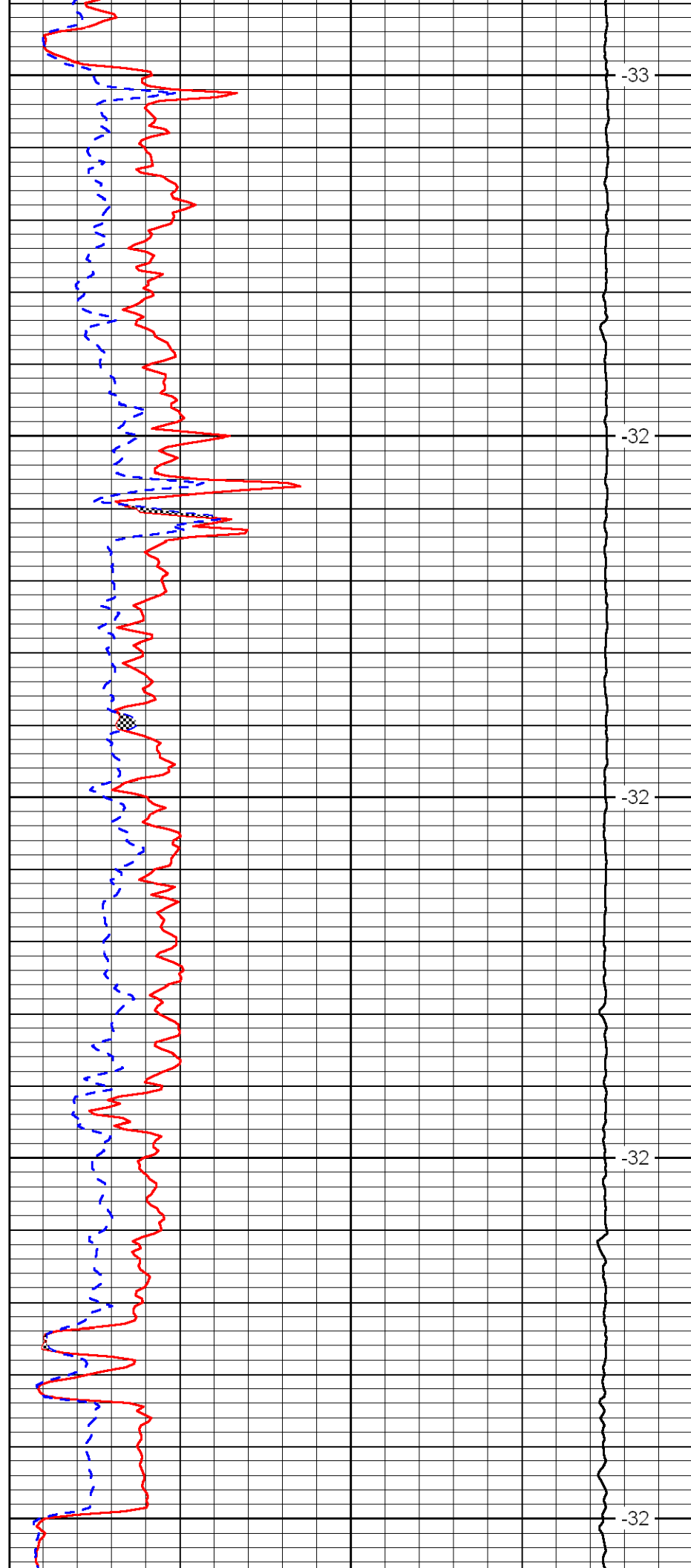
3850

3900

3950

4000

4050



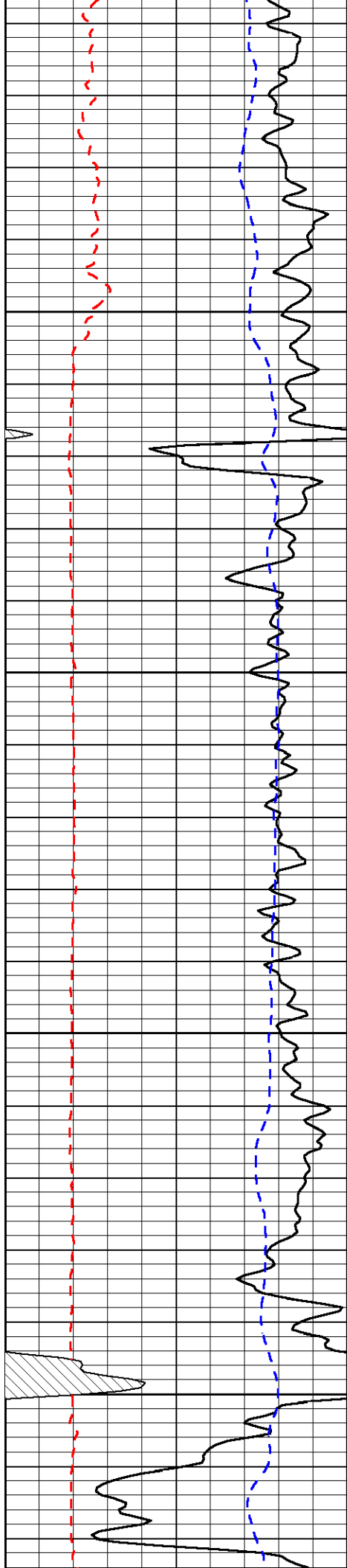
-33

-32

-32

-32

-32

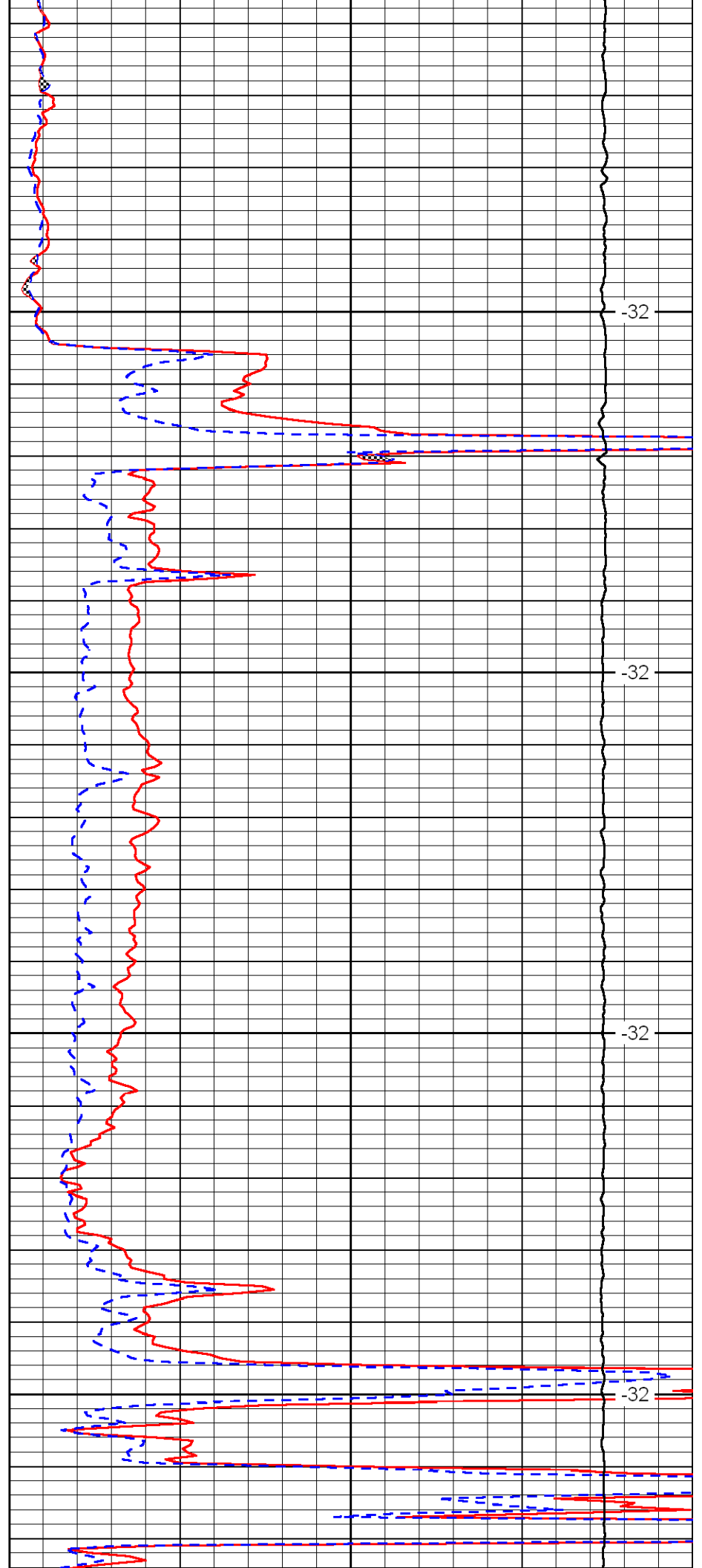


4100

4150

4200

4250

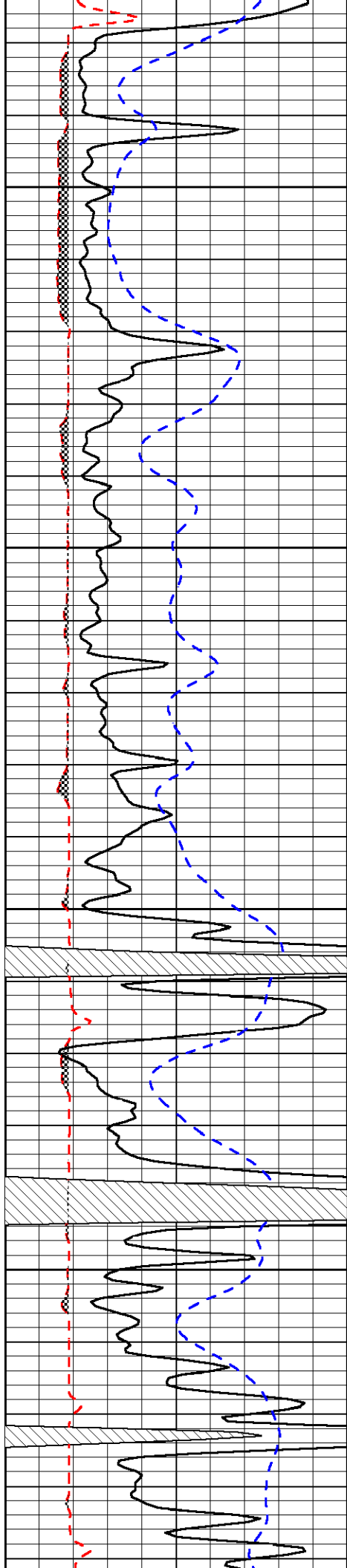


-32

-32

-32

-32

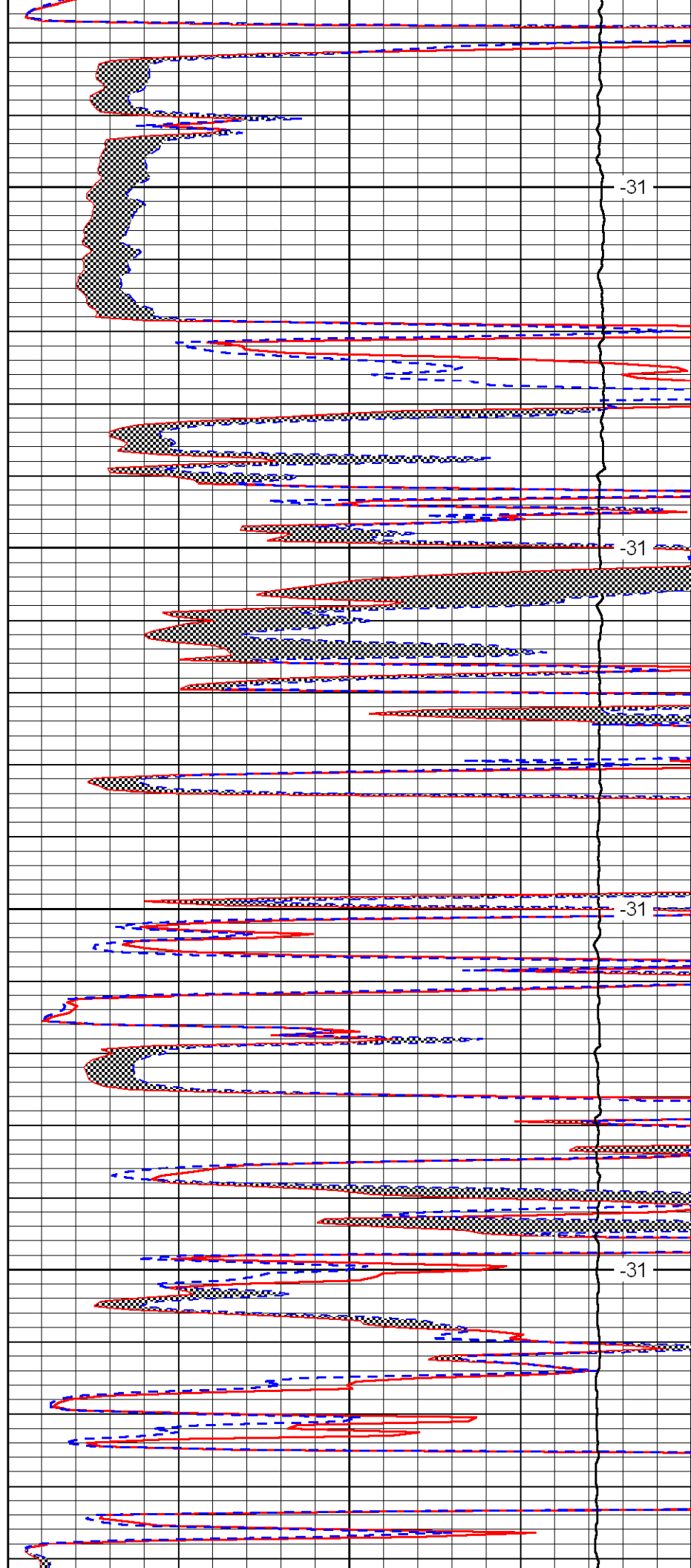


4300

4350

4400

4450

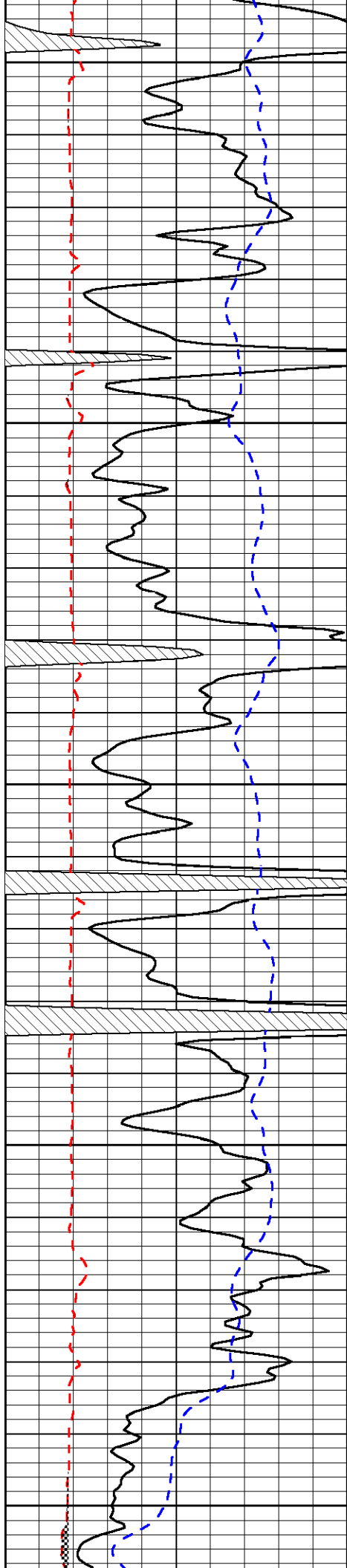


-31

-31

-31

-31



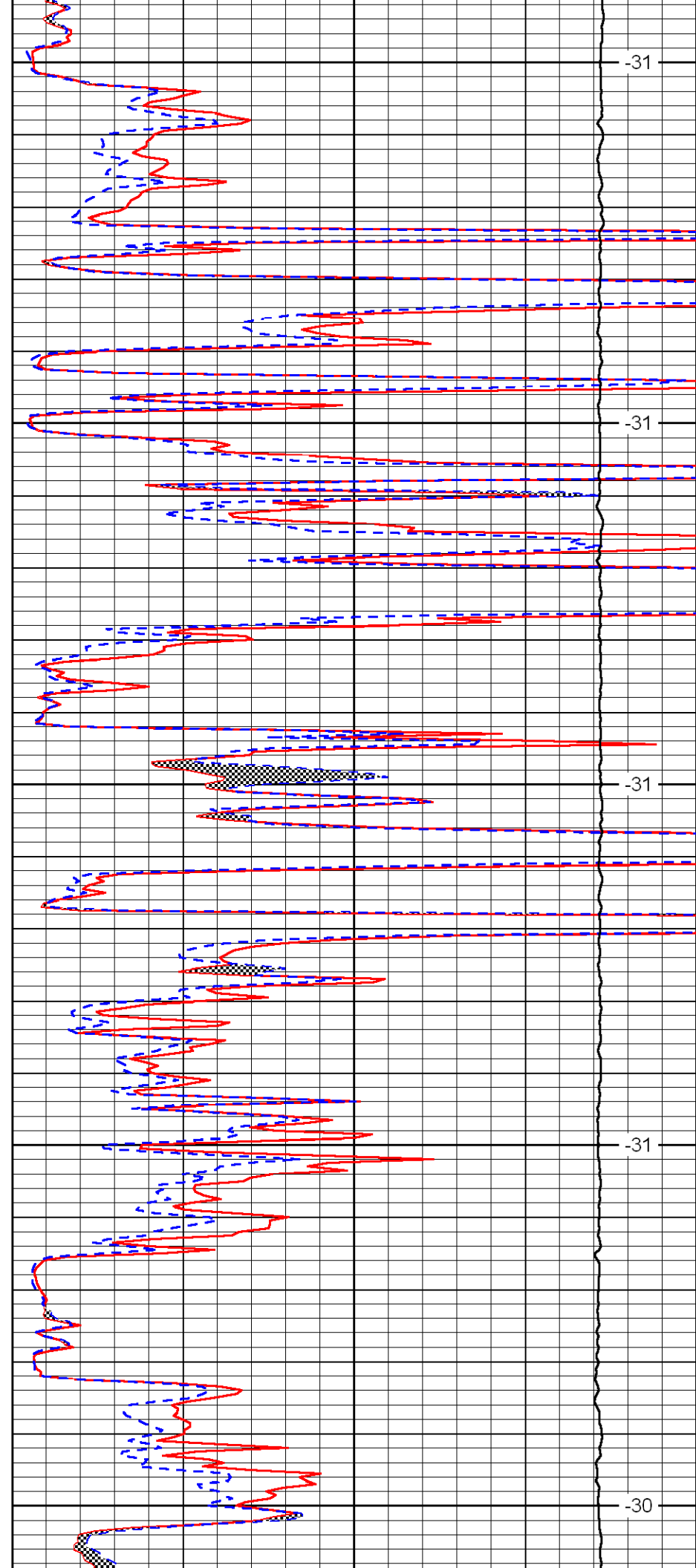
4500

4550

4600

4650

4700



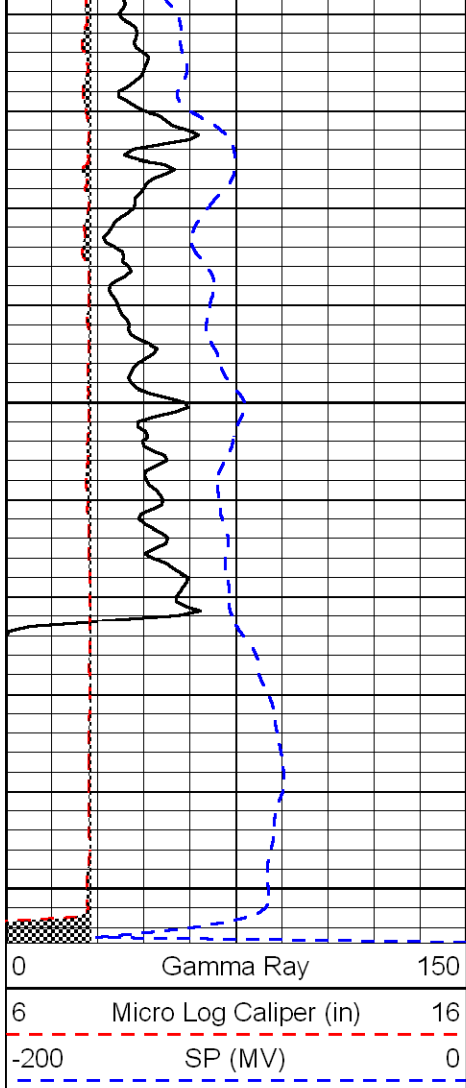
-31

-31

-31

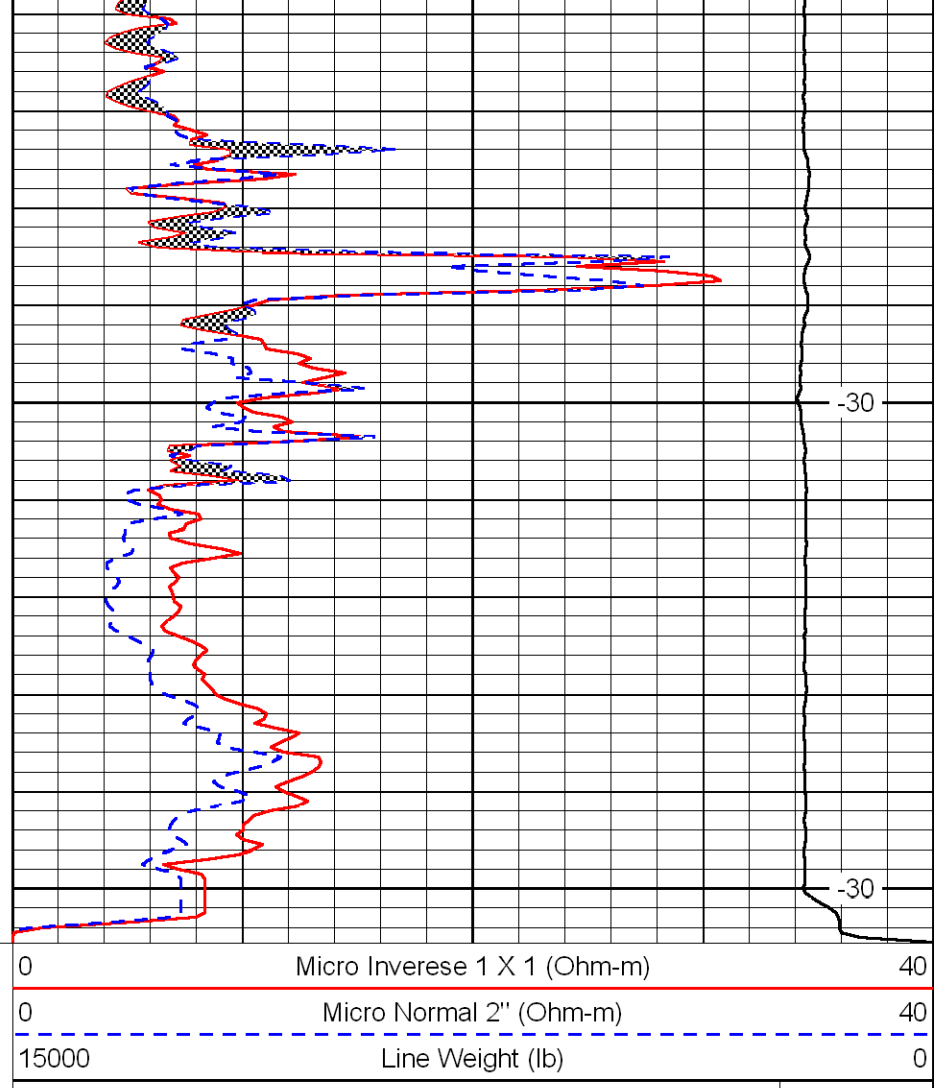
-31

-30



4750

4800



-30

-30

LSPD
(ft/min)