



## Dual Compensated Porosity Log

**DIGITAL LOG (785) 625-3858**

API No.	15-007-23,467-00-00		
Company	Val Energy, Inc.		
Well	Paxton Kubik No. 10-28		
Field	Landis		
County	Barber		
State	Kansas		
Location	NE - SE - NE 3630 FSL & 330' FEL		
Sec: 28	Twp: 34 S	Rge: 11 W	Other Services DIL MEL
Permanent Datum	Ground Level	Elevation 1372	Elevation
Log Measured From	Kelly Bushing	11 Ft. Above Perm. Datum	K.B. 1383
Drilling Measured From	Kelly Bushing		D.F. G.L. 1372

Date	11/24/2009		
Run Number	One		
Type Log	CNL / CDL		
Depth Driller	4825		
Depth Logger	4800		
Bottom Logged Interval	4779		
Top Logged Interval	3000		
Type Fluid In Hole	Chemical		
Salinity, PPM CL	3,000		
Density	9.3		
Level	Full		
Max. Rec. Temp. F	124		
Operating Rig Time	4 Hours		
Equipment -- Location	15 Hays		
Recorded By	B. Becker		
Witnessed By	Steve Vanbuskirk		

Borehole Record				Casing Record			
Run No	Bit	From	To	Size	Wgt.	From	To
1	12.25	00	206	8.625	24#	00	206
2	7.875	206	4825				

<<< Fold Here >>>

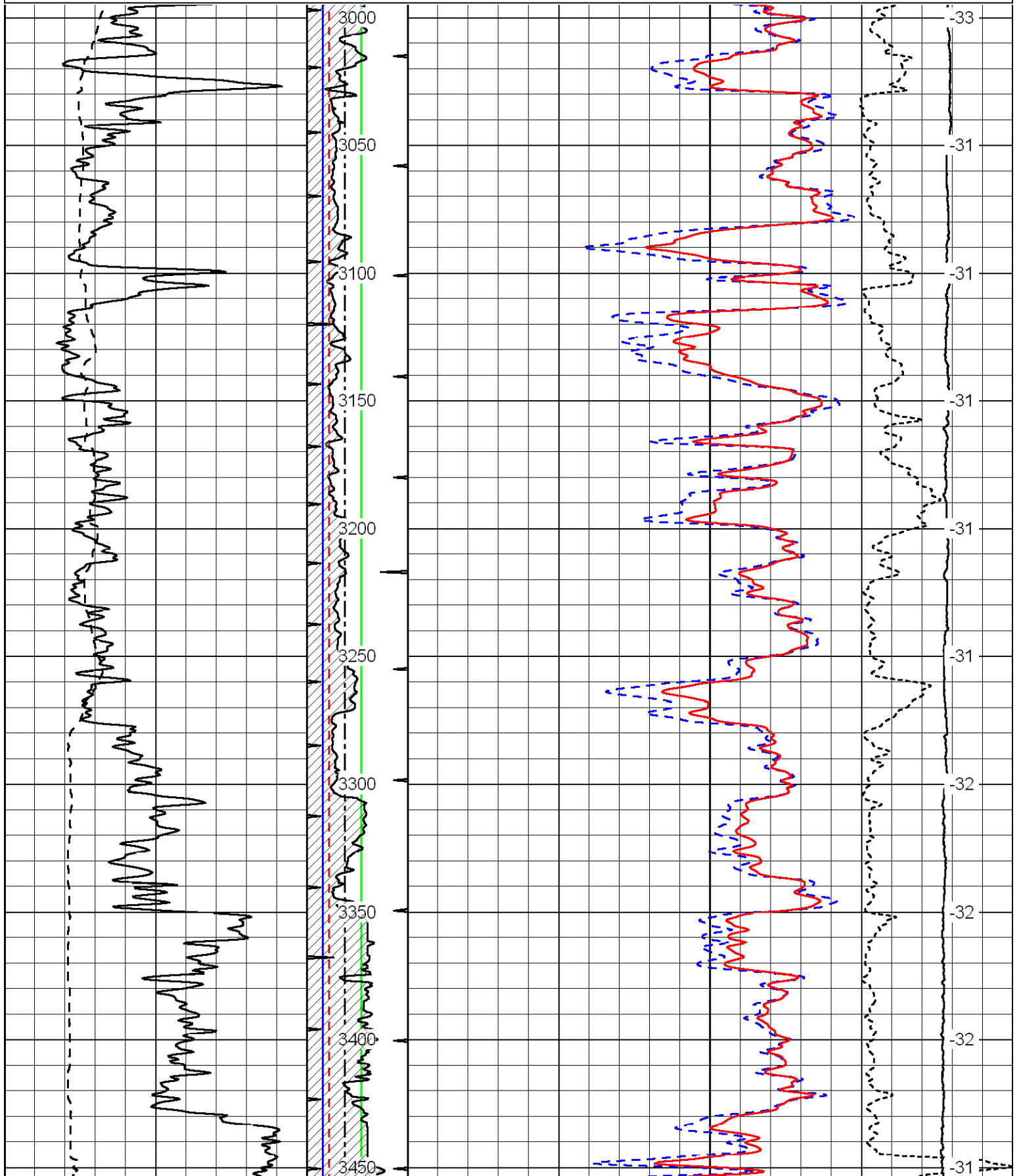
All interpretations are opinions based on inferences from electrical or other measurements and we cannot and do not guarantee the accuracy or correctness of any interpretation, and we shall not, except in the case of gross or willful negligence on our part, be liable or responsible for any loss, costs, damages, or expenses incurred or sustained by anyone resulting from any interpretation made by any of our officers, agents or employees. These interpretations are also subject to our general terms and conditions set out in our current Price Schedule.

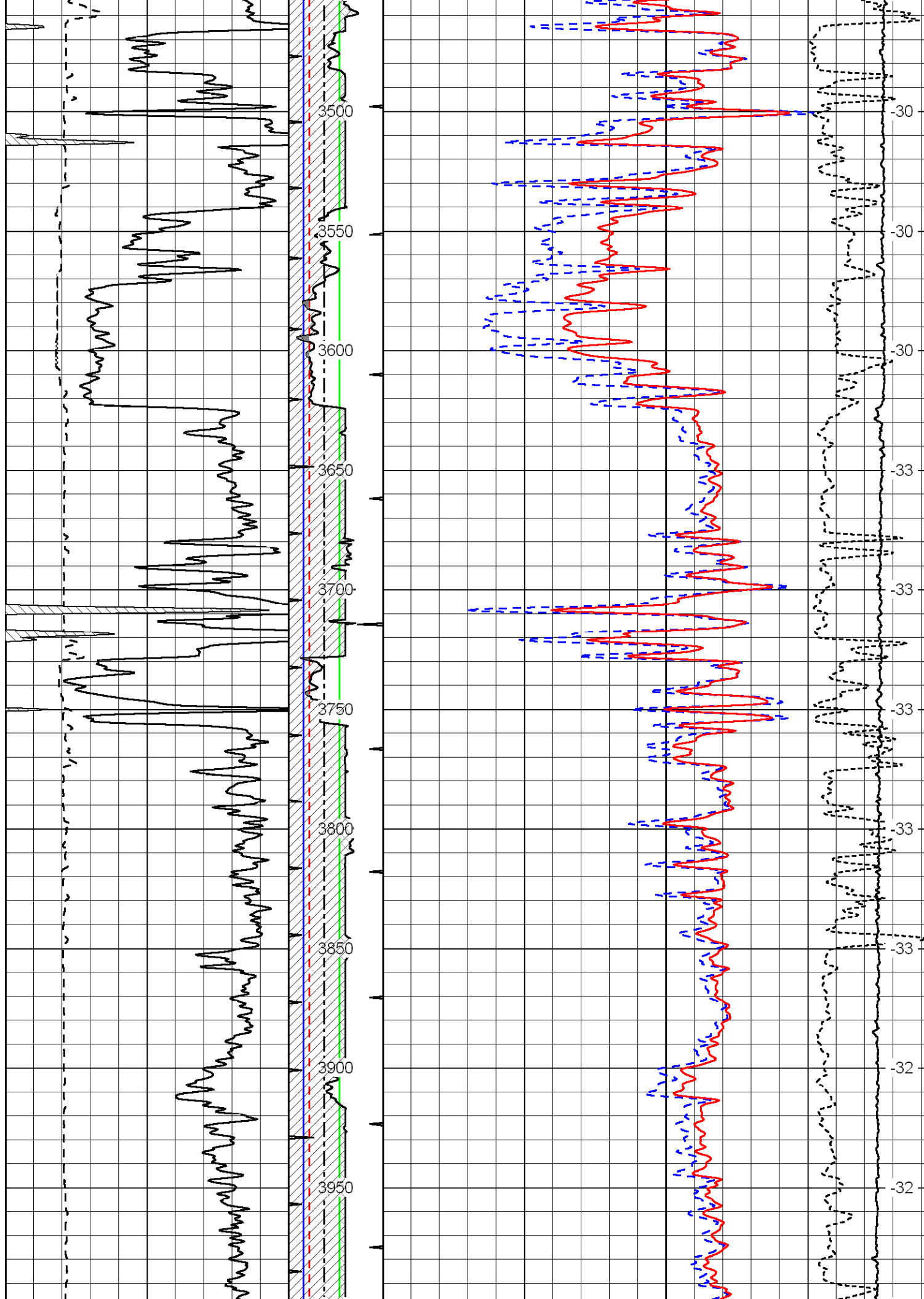
**Comments**

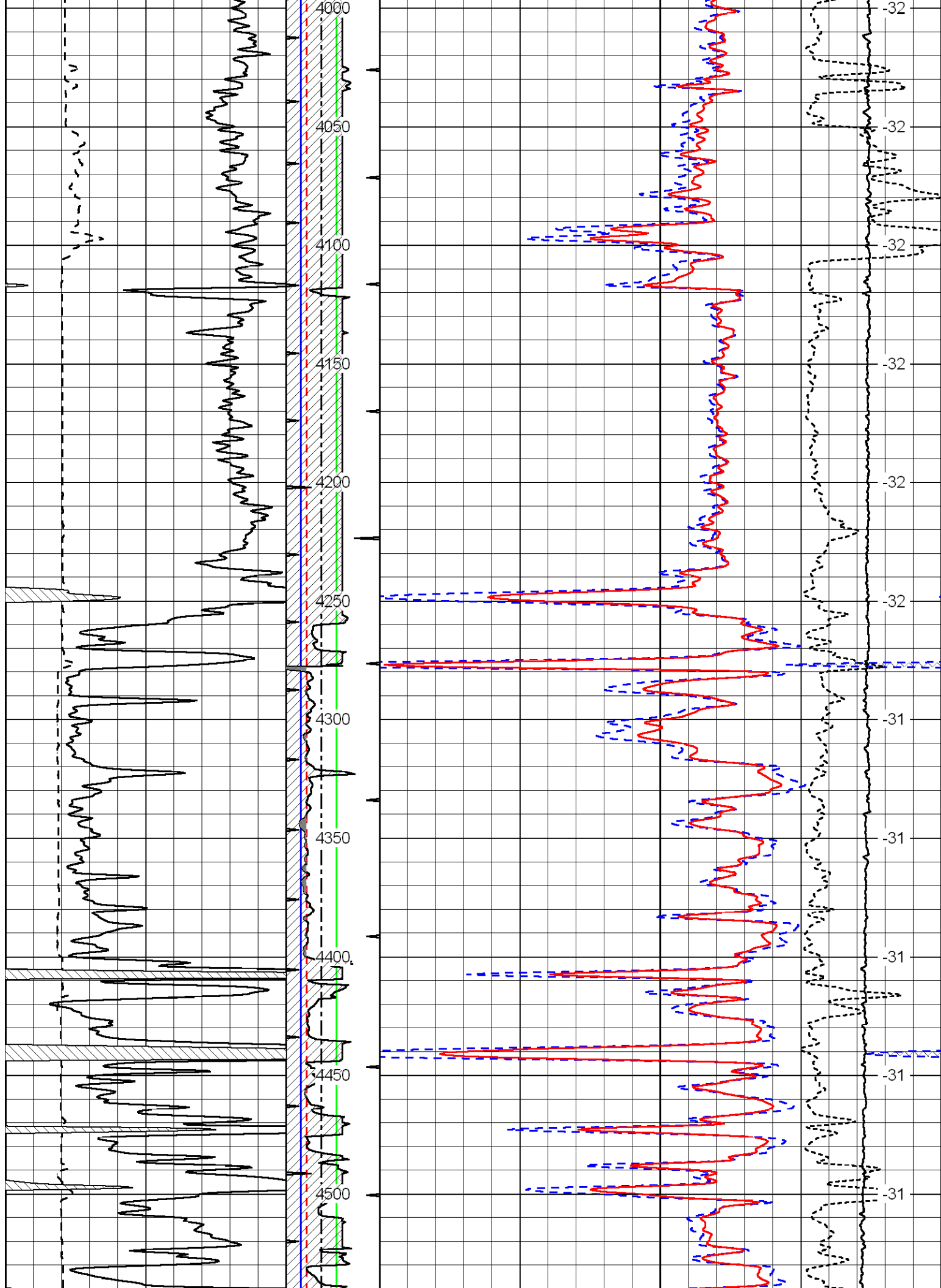
Thank you for using Log-Tech, Inc.  
 (785) 625-3858  
 Medicine Lodge, Ks;  
 South to Rattlesnake Trail Rd;  
 3 East to Red Dust Rd;  
 1/2 North; West Into

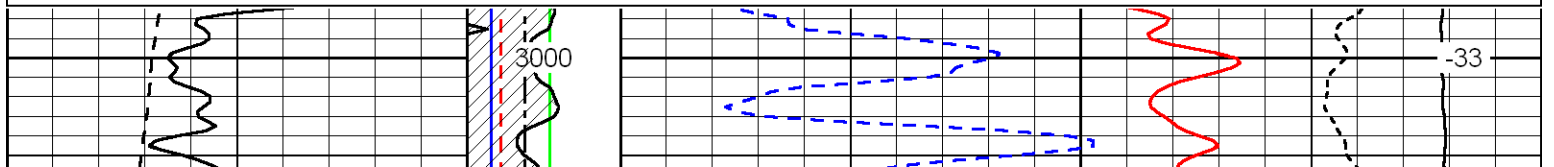
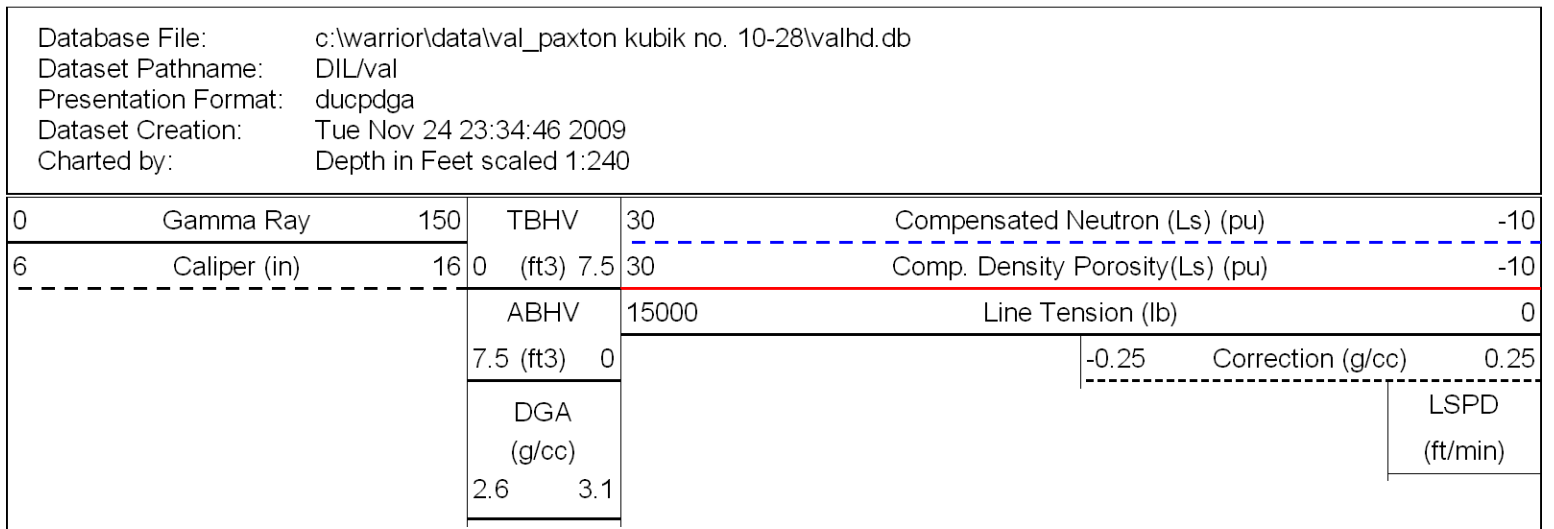
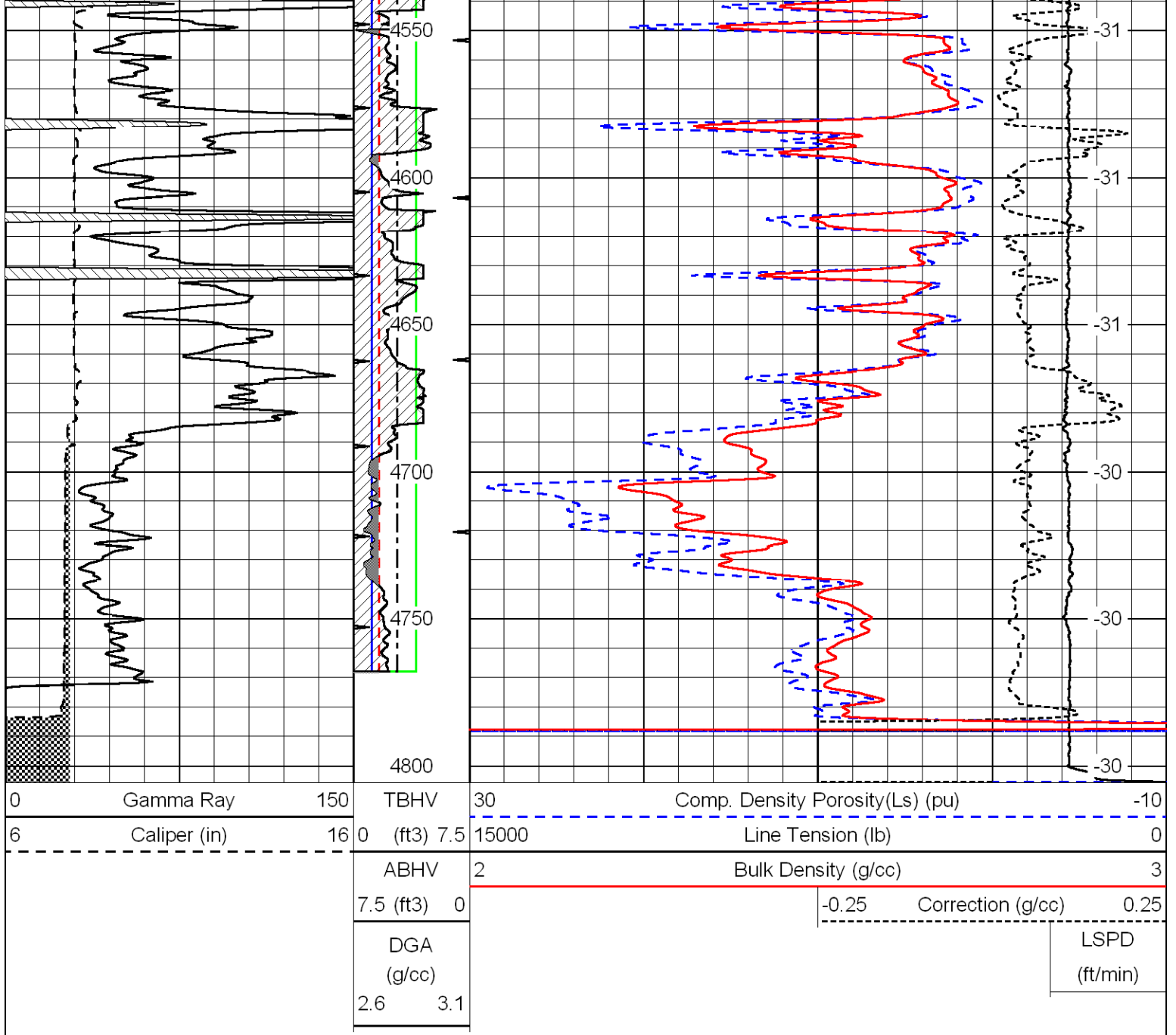
Database File: c:\warrior\data\val\_paxton kubik no. 10-28\valhd.db  
 Dataset Pathname: DIL\val  
 Presentation Format: cdldga  
 Dataset Creation: Tue Nov 24 23:34:46 2009  
 Charted by: Depth in Feet scaled 1:600

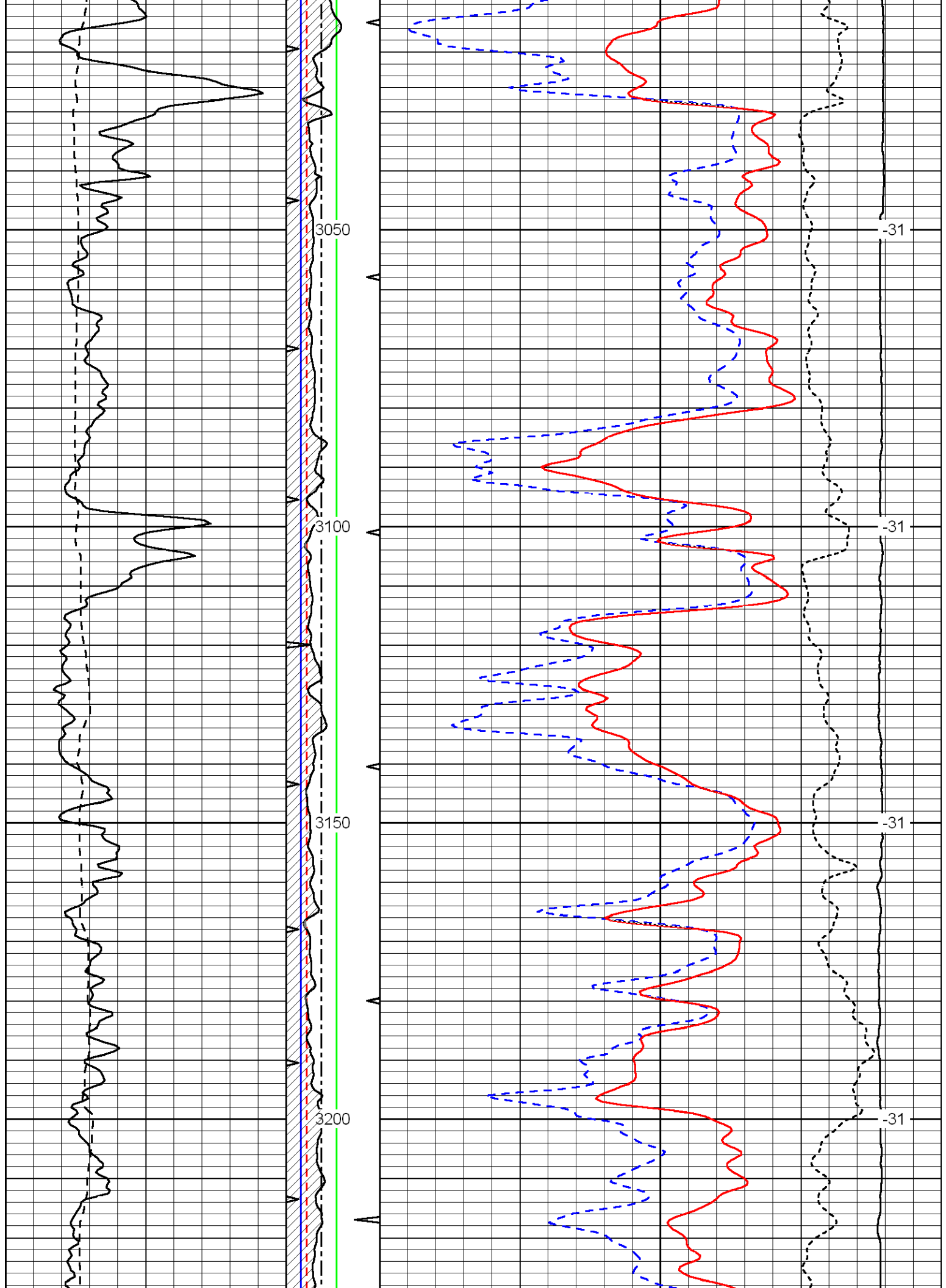
0	Gamma Ray	150	TBHV	30	Comp. Density Porosity(Ls) (pu)	-10
6	Caliper (in)	16	(ft3) 7.5	15000	Line Tension (lb)	0
			ABHV	2	Bulk Density (g/cc)	3
			7.5 (ft3) 0		-0.25 Correction (g/cc)	0.25
			DGA (g/cc)			LSPD (ft/min)
			2.6 3.1			

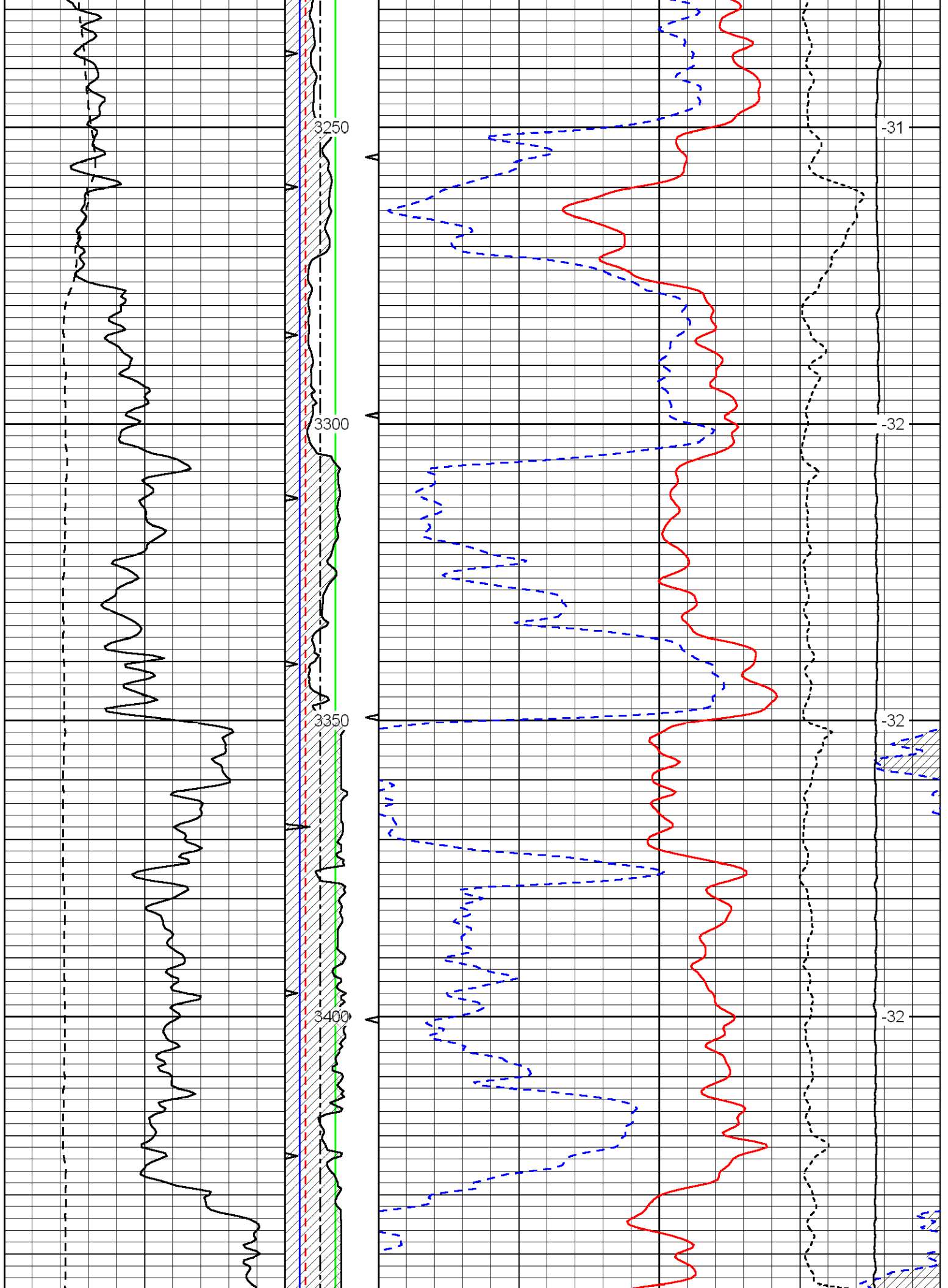


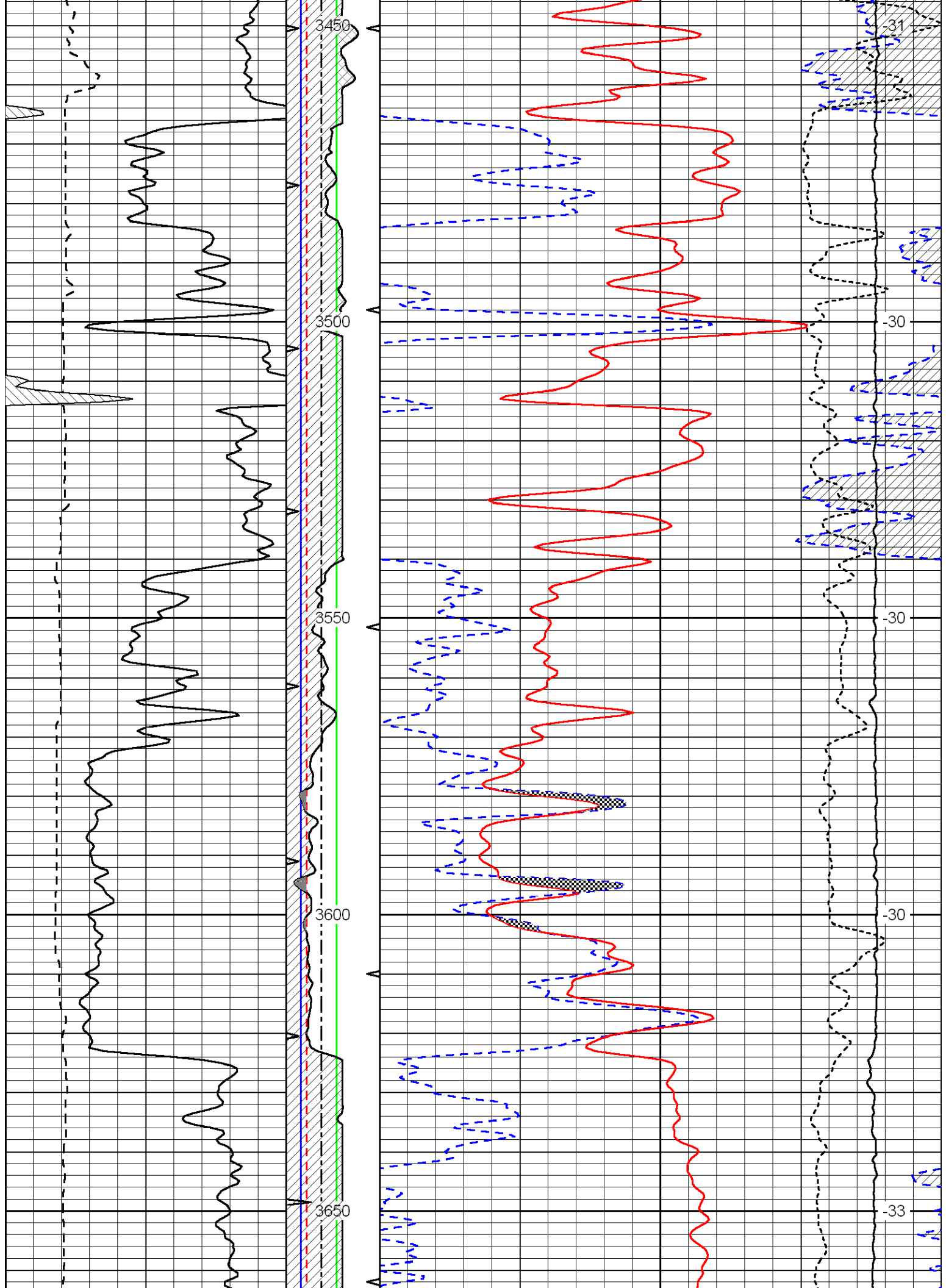


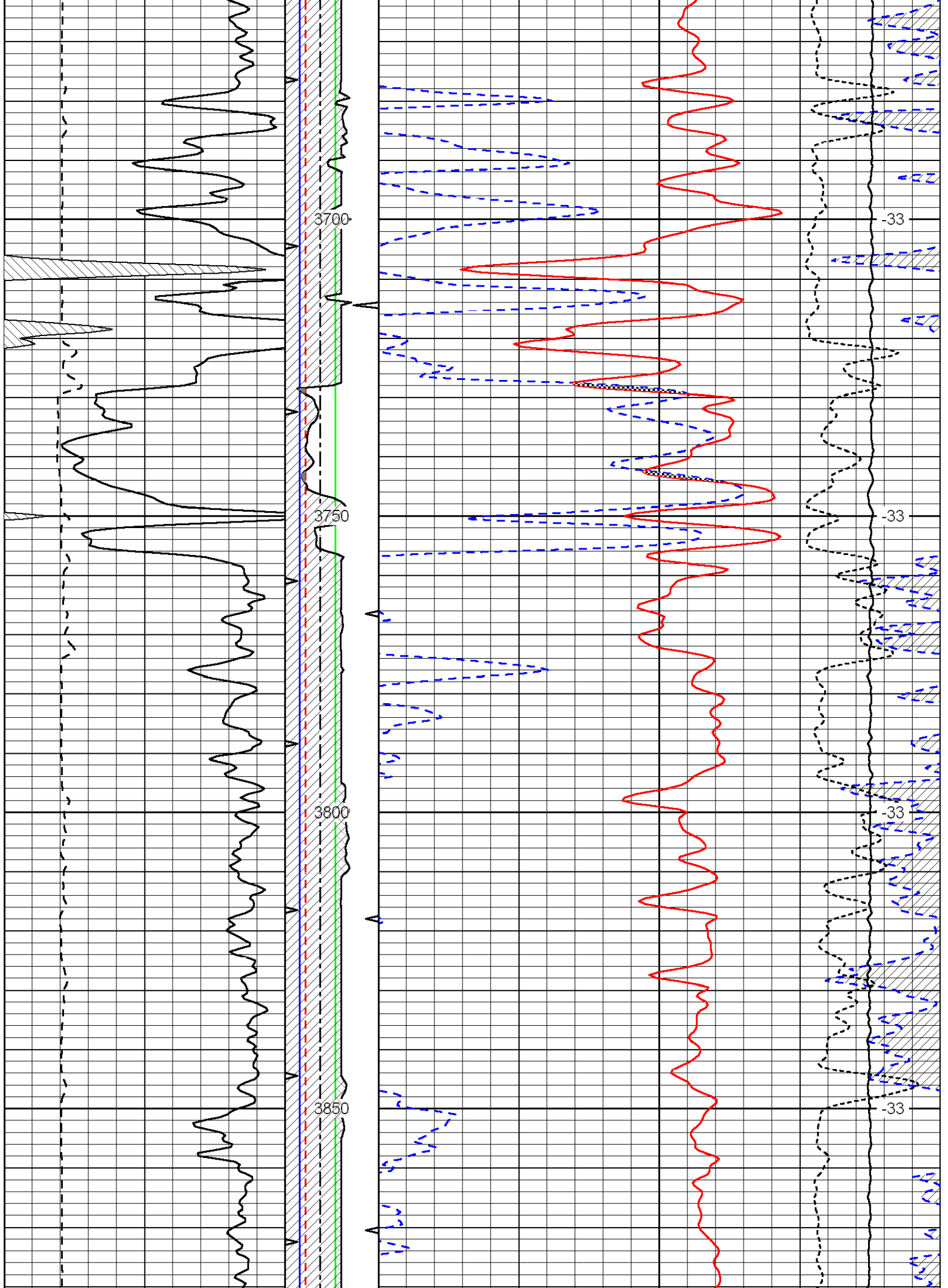


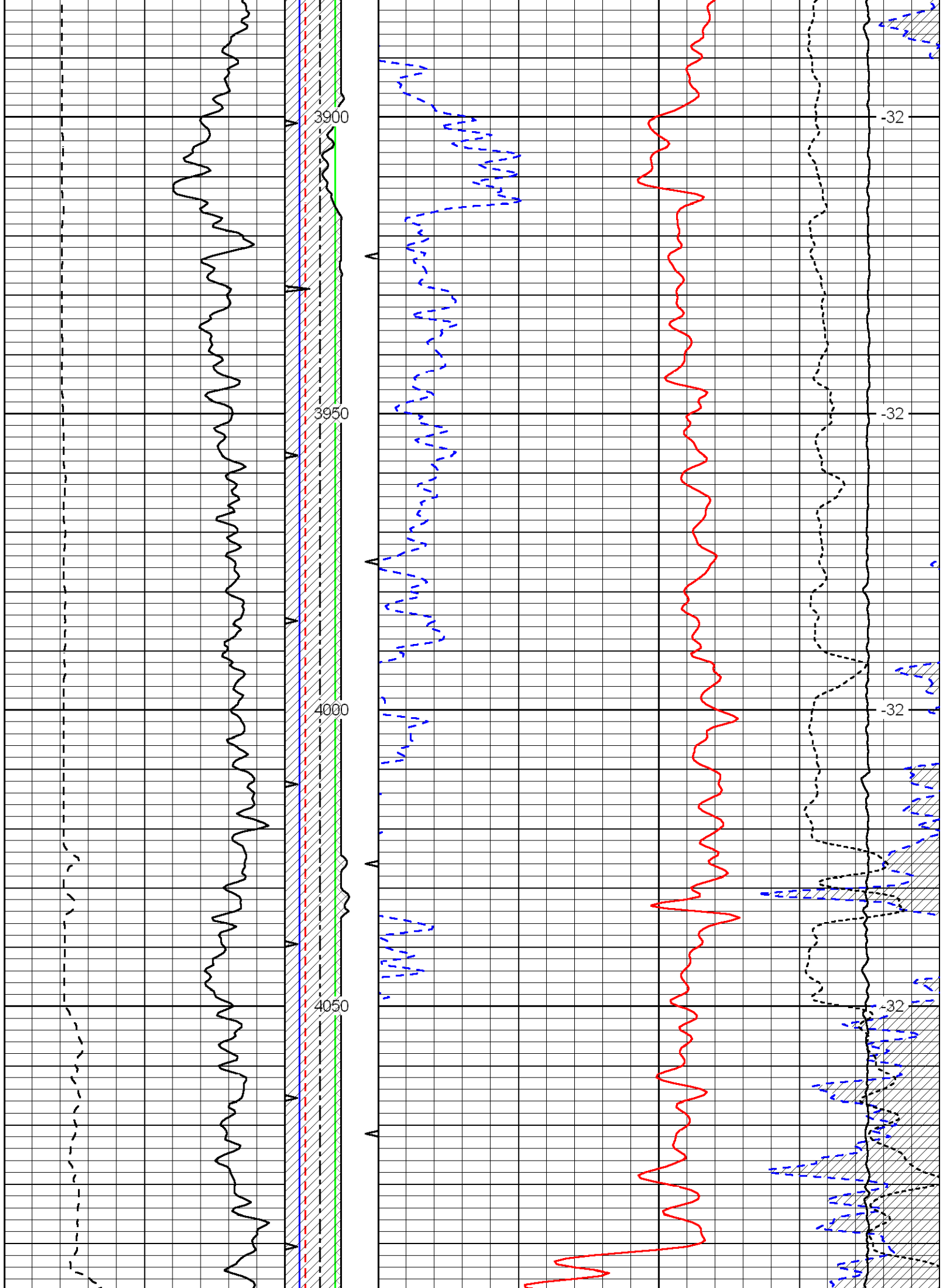


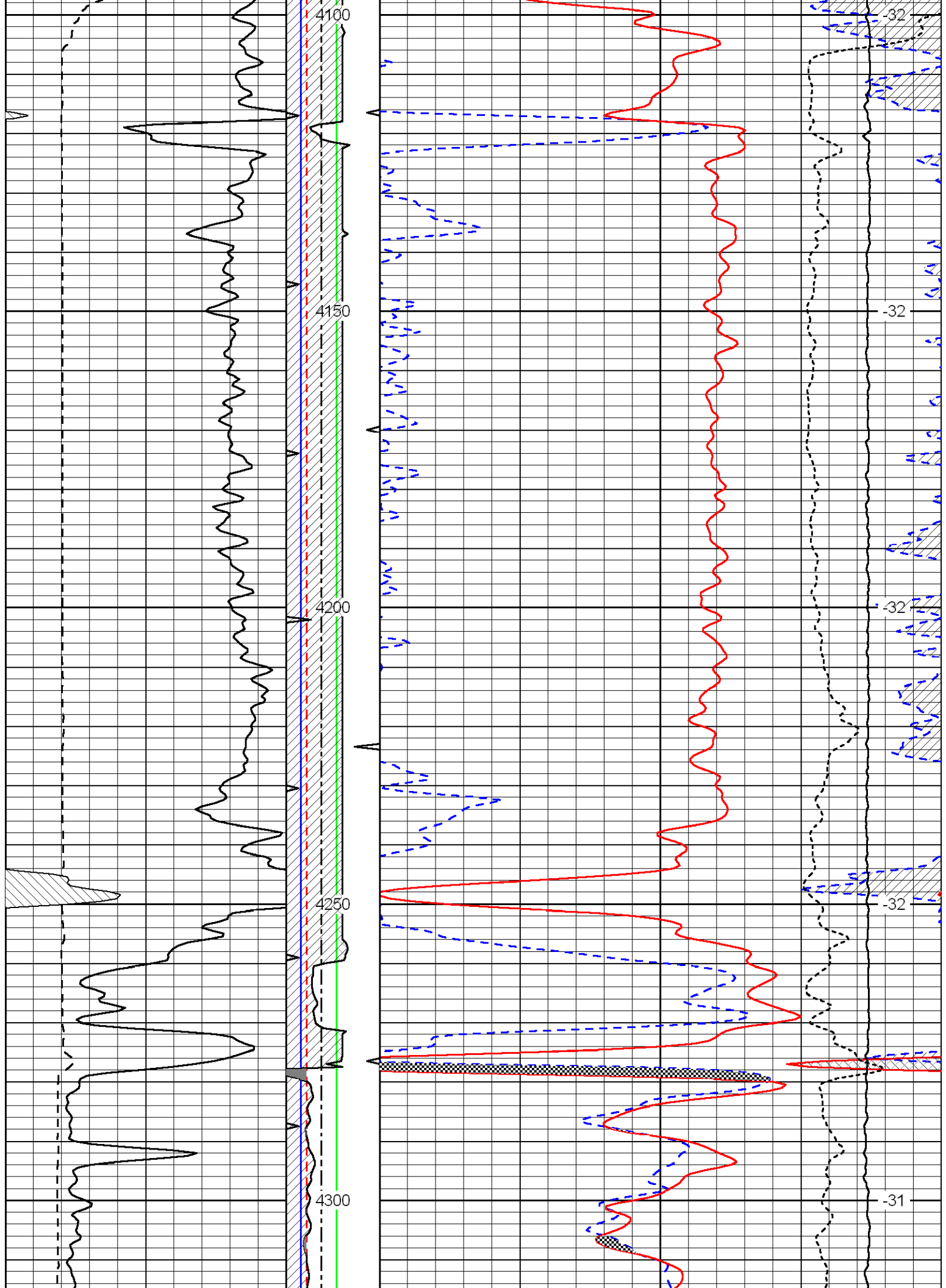


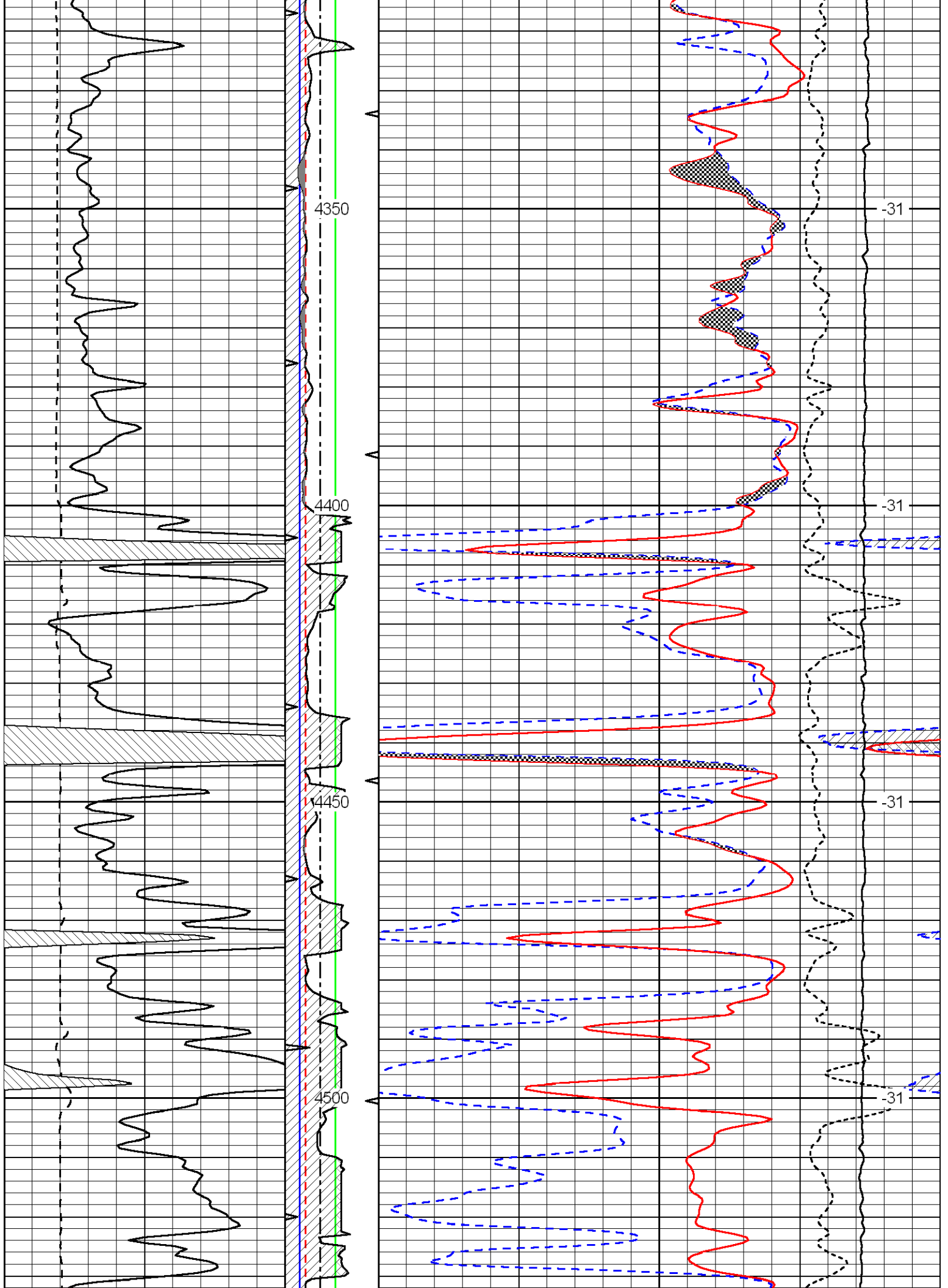


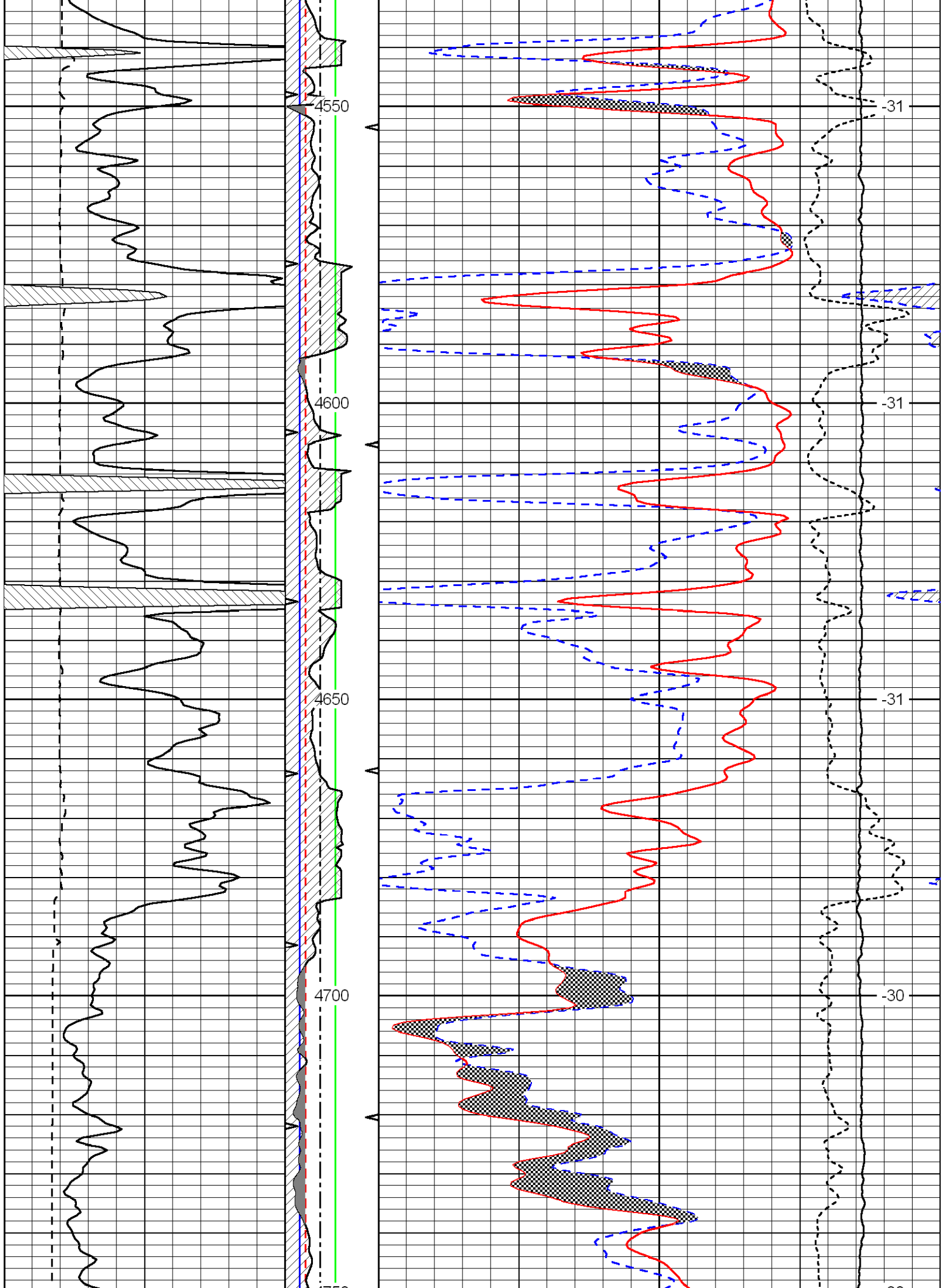


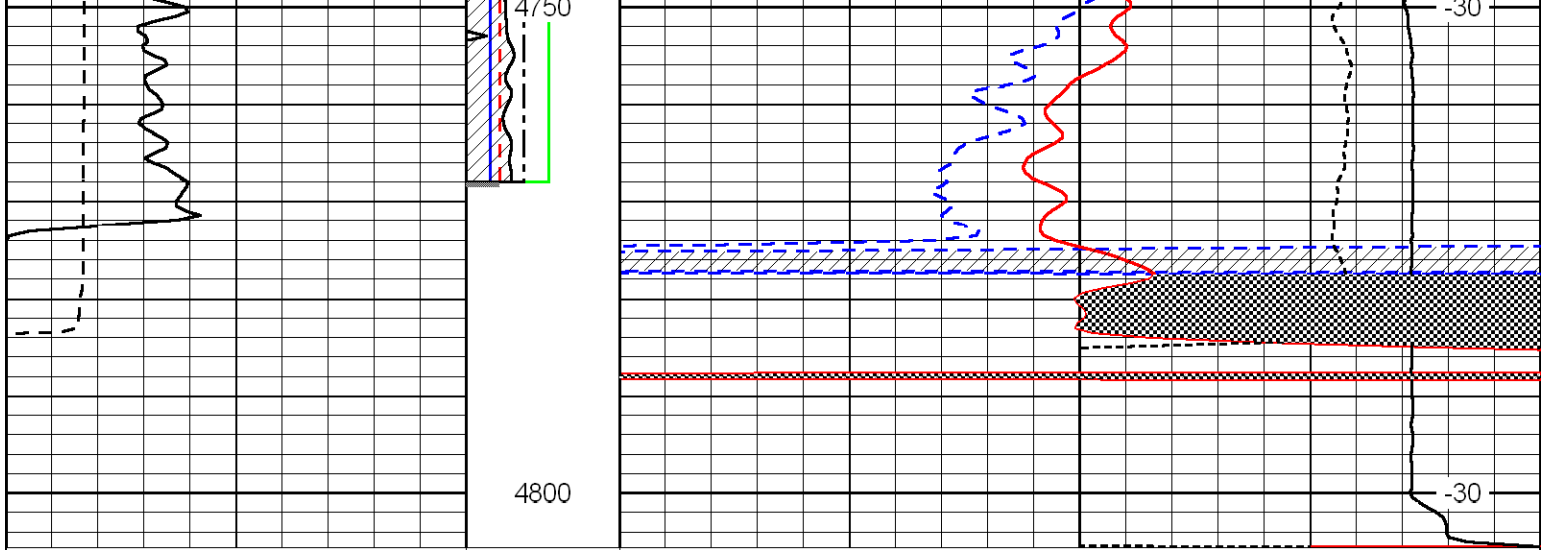












0	Gamma Ray	150	TBHV	30	Compensated Neutron (Ls) (pu)	-10
6	Caliper (in)	16	(ft3) 7.5	30	Comp. Density Porosity(Ls) (pu)	-10
			ABHV	15000	Line Tension (lb)	0
			7.5 (ft3)	0	-0.25	Correction (g/cc) 0.25
			DGA			LSPD
			(g/cc)			(ft/min)
			2.6	3.1		