



SUPERIOR
Hays,
Kansas

SONIC
LOG

Company: VINCENT OIL CORPORATION
Well: FORD COUNTY LAND & CATTLE
Field: WILDCAT
County: FORD
State: KANSAS

Company: VINCENT OIL CORPORATION
Well: FORD COUNTY LAND & CATTLE CO. #2-5
Field: WILDCAT
County: FORD State: KANSAS

Location: API #: 15-057-20644-0000
1980' FSL & 960' FWL
SEC 5 TWP 29S RGE 23W
Permanent Datum: GROUND LEVEL Elevation: 2473
Log Measured From: KELLY BUSHING 12' A.G.L.
Drilling Measured From: KELLY BUSHING
Other Services: CDL/CNL/PE DIL/MEL
Elevation: K.B. 2485 D.F. 2483 G.L. 2473

Date	11/14/09
Run Number	TWO
Depth Driller	5350
Depth Logger	5358
Bottom Logged Interval	5345
Top Log Interval	500
Casing Driller	8 5/8" @ 561'
Casing Logger	558
Bit Size	7 7/8
Type Fluid In Hole	CHEMICAL MUD
Density / Viscosity	8.9/7.1
pH / Fluid Loss	10.0/13.6
Source of Sample	FLOWLINE
Rm @ Meas. Temp	.440 @ 70F
Rmf @ Meas. Temp	.330 @ 70F
Rmc @ Meas. Temp	.528 @ 70F
Source of Rmf / Rmc	MEASUREMENT
Rm @ BHT	.241 @ 128F
Time Circulation Stopped	5.5 HOURS
Time Logger on Bottom	1:30 P.M.
Maximum Recorded Temperature	128F
Equipment Number	0836
Location	HAYS, KANSAS
Recorded By	JEFF LUEBBERS
Witnessed By	KEN LEBLANC

<<< Fold Here >>>

All interpretations are opinions based on inferences from electrical or other measurements and we cannot and do not guarantee the accuracy or correctness of any interpretation, and we shall not, except in the case of gross or willful negligence on our part, be liable or responsible for any loss, costs, damages, or expenses incurred or sustained by anyone resulting from any interpretation made by any of our officers, agents or employees. These interpretations are also subject to our general terms and conditions set out in our current Price Schedule.

Comments

THANK YOU FOR USING SUPERIOR WELL SERVICE HAYS, KANSAS (785) 628-6395
DIRECTIONS
FORD, KS. (HWY 400 & SADDLE RD.) 8 W. TO RD. "118", 7 S. TO "WILDFIRE RD.", 1 E., N. INTO

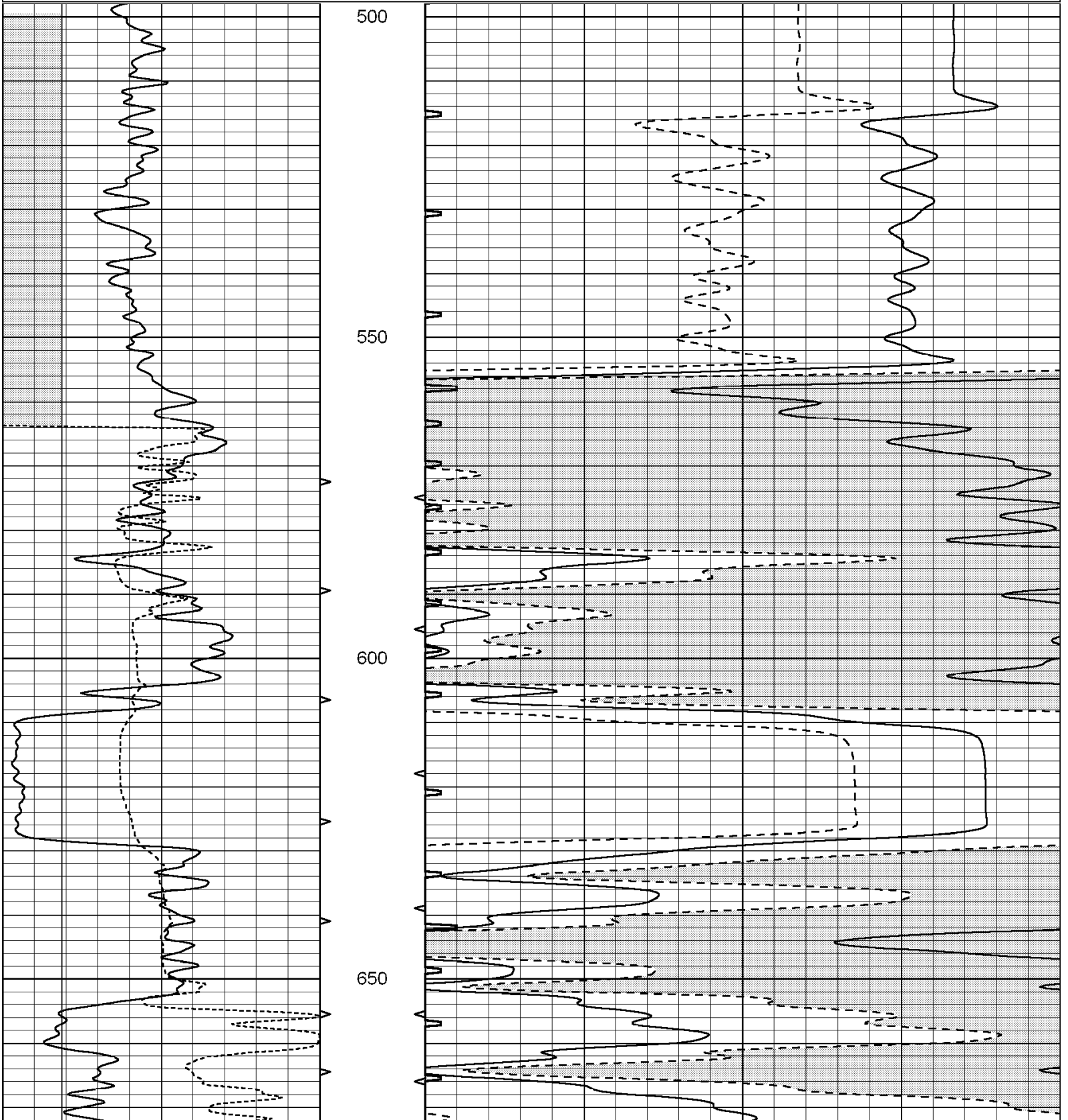


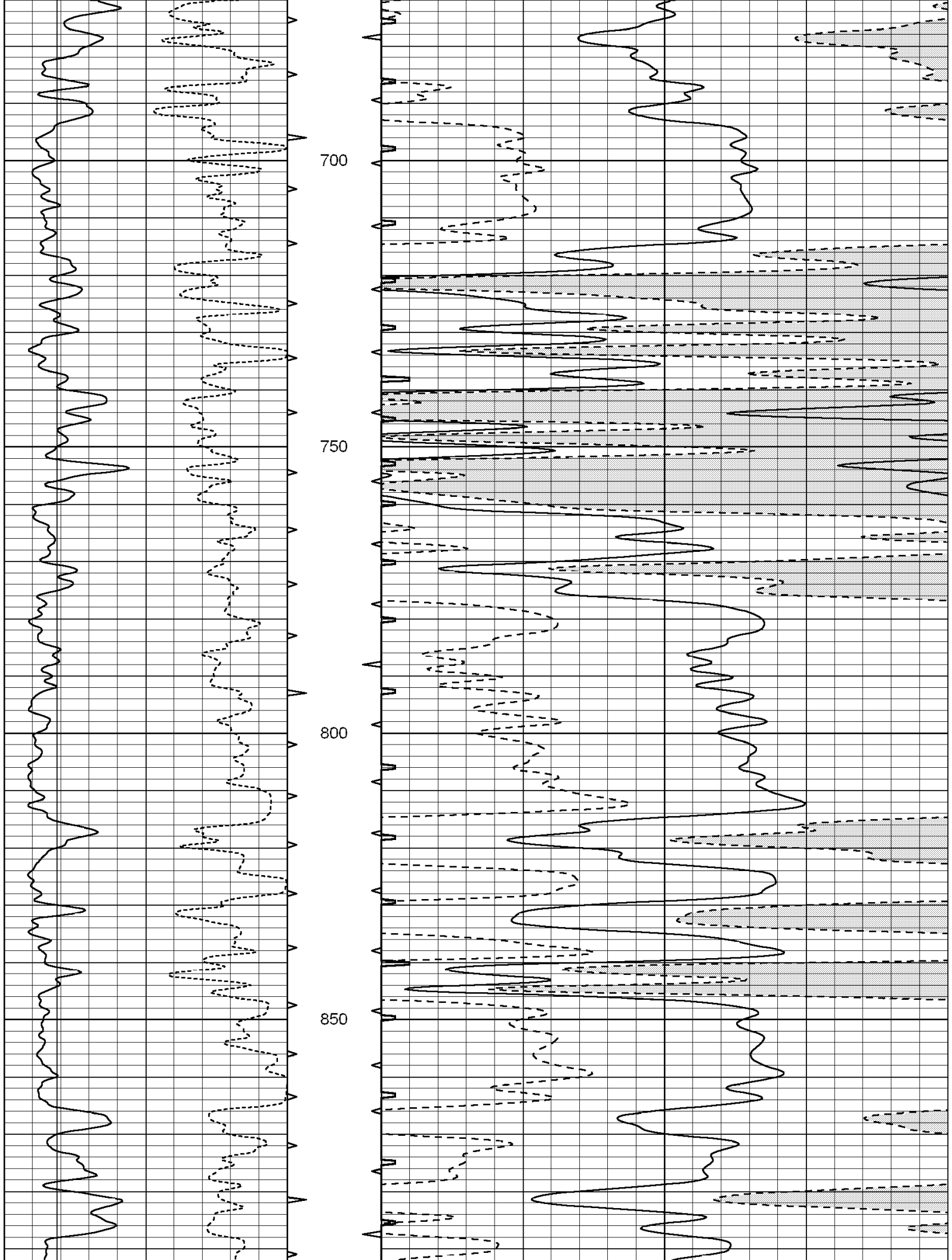
SUPERIOR
Hays,
Kansas

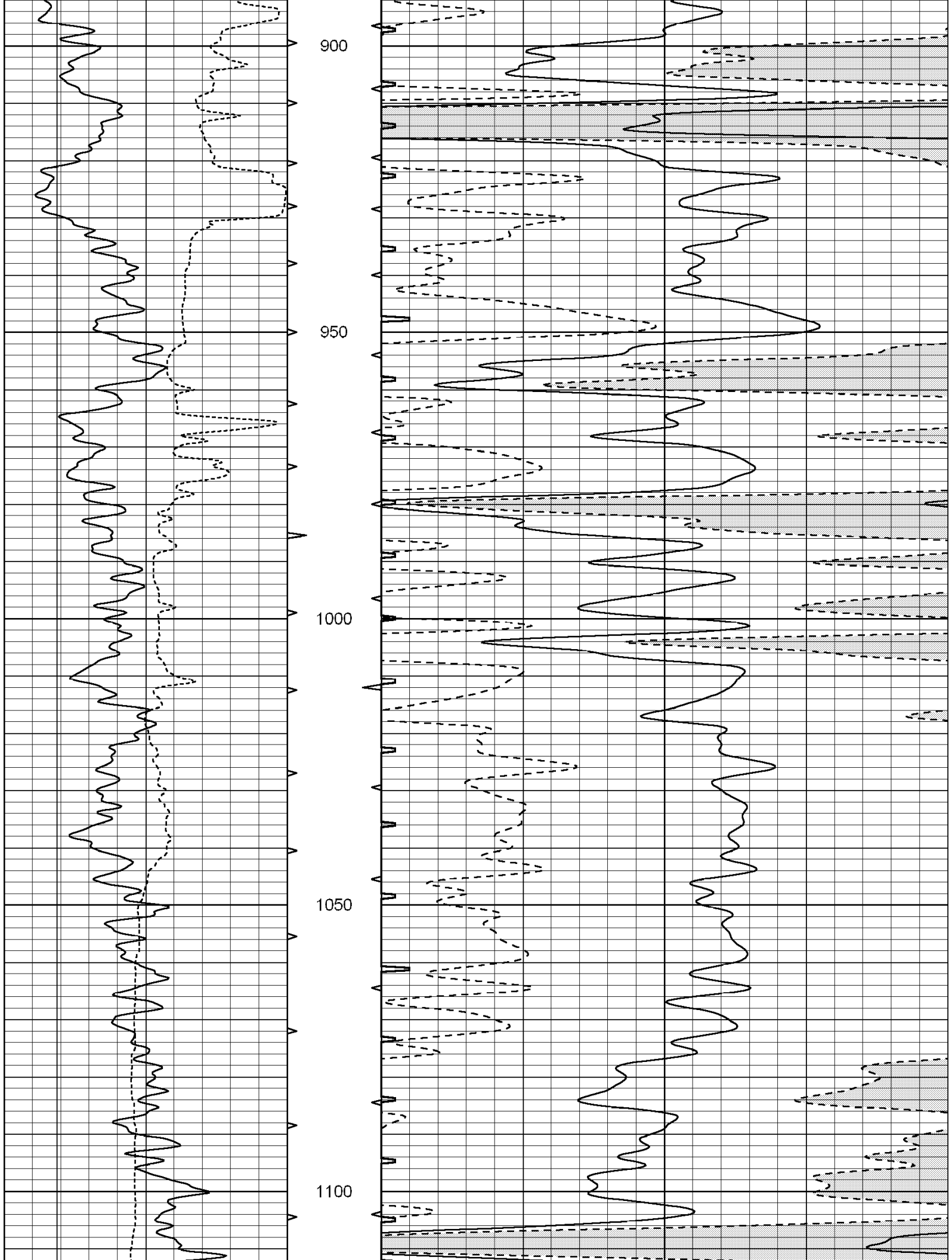
MAIN SECTION

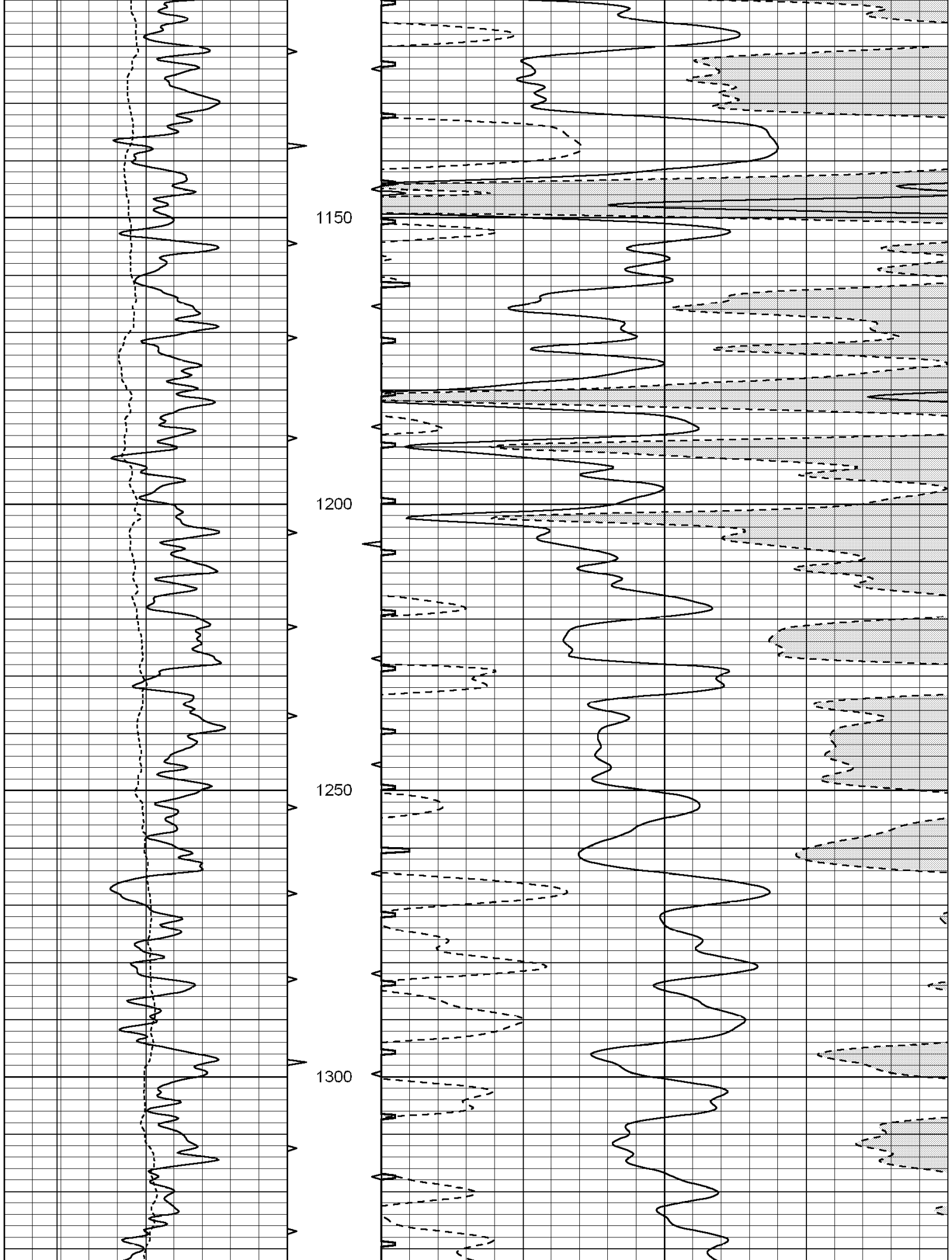
Database File: 004371pe.db
 Dataset Pathname: pass7.3
 Presentation Format: slt
 Dataset Creation: Sat Nov 14 21:20:51 2009
 Charted by: Depth in Feet scaled 1:240

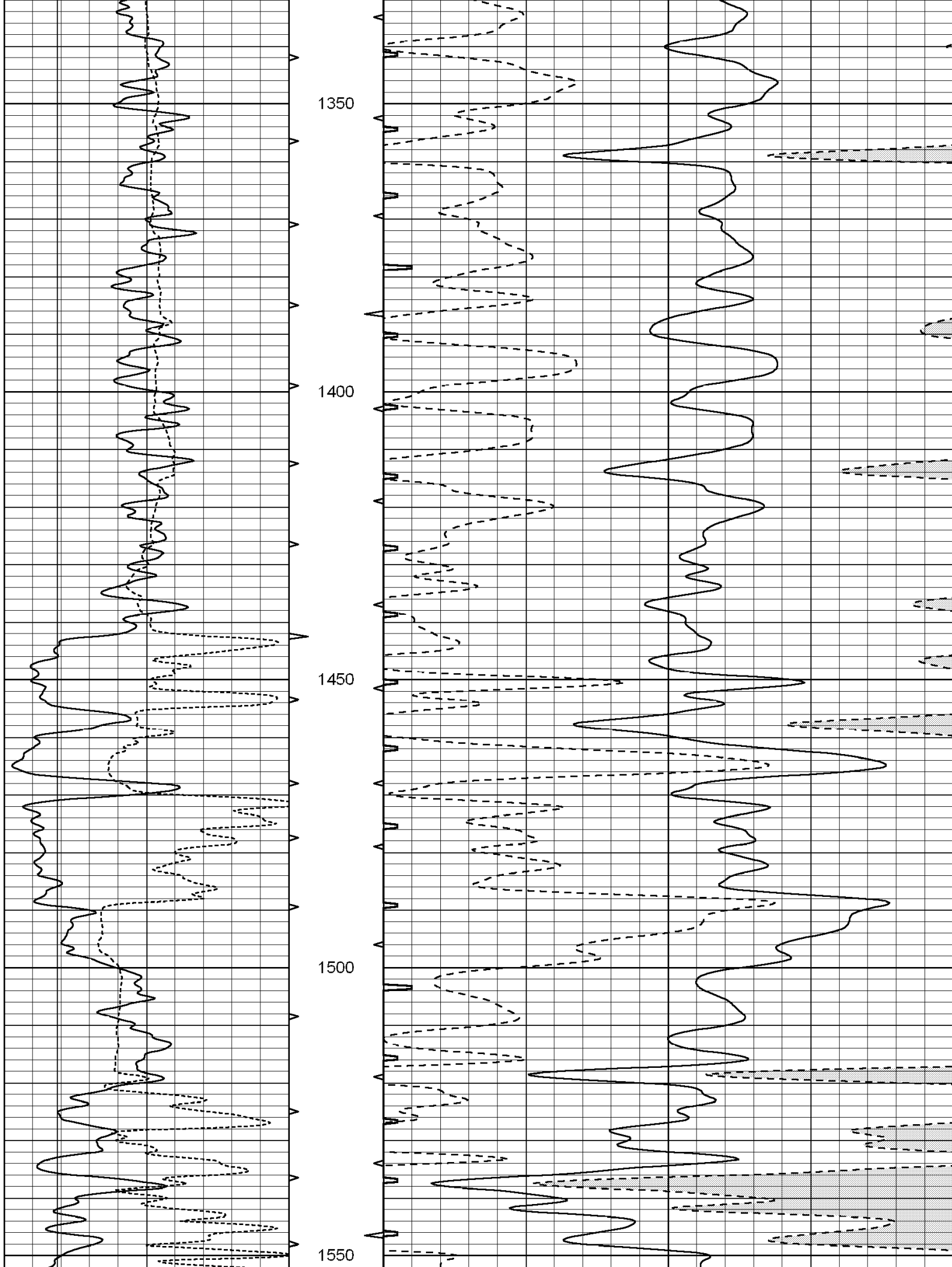
0	GAMMA RAY (GAPI)	150	ABHV	140	DELTA TIME (usec/ft)	40
6	CALIPER (in)	16	10 (ft3) 0	30	SONIC POROSITY (pu)	-10
			TBHV	0	ITT (msec)	20
			0 (ft3) 10			

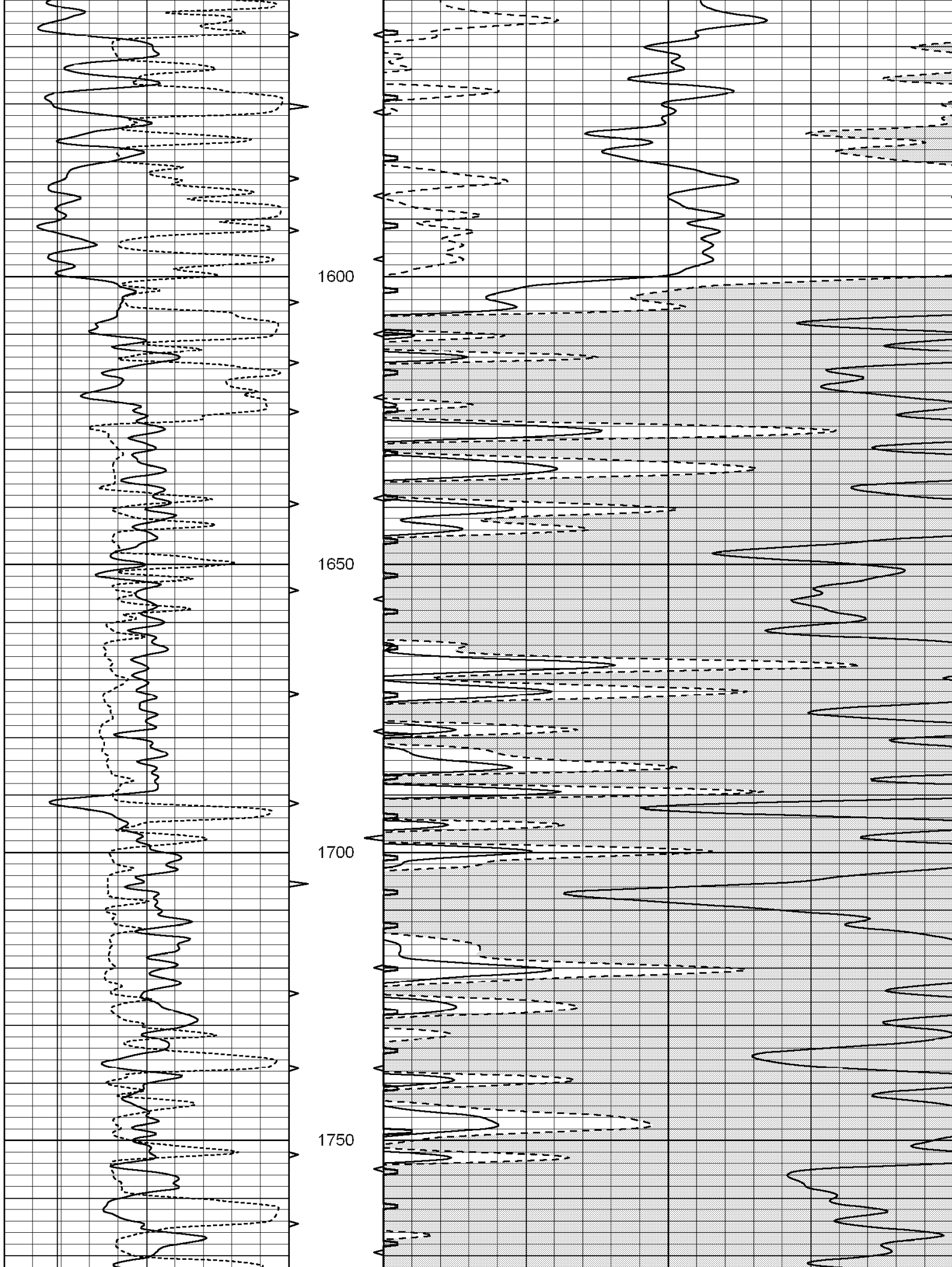


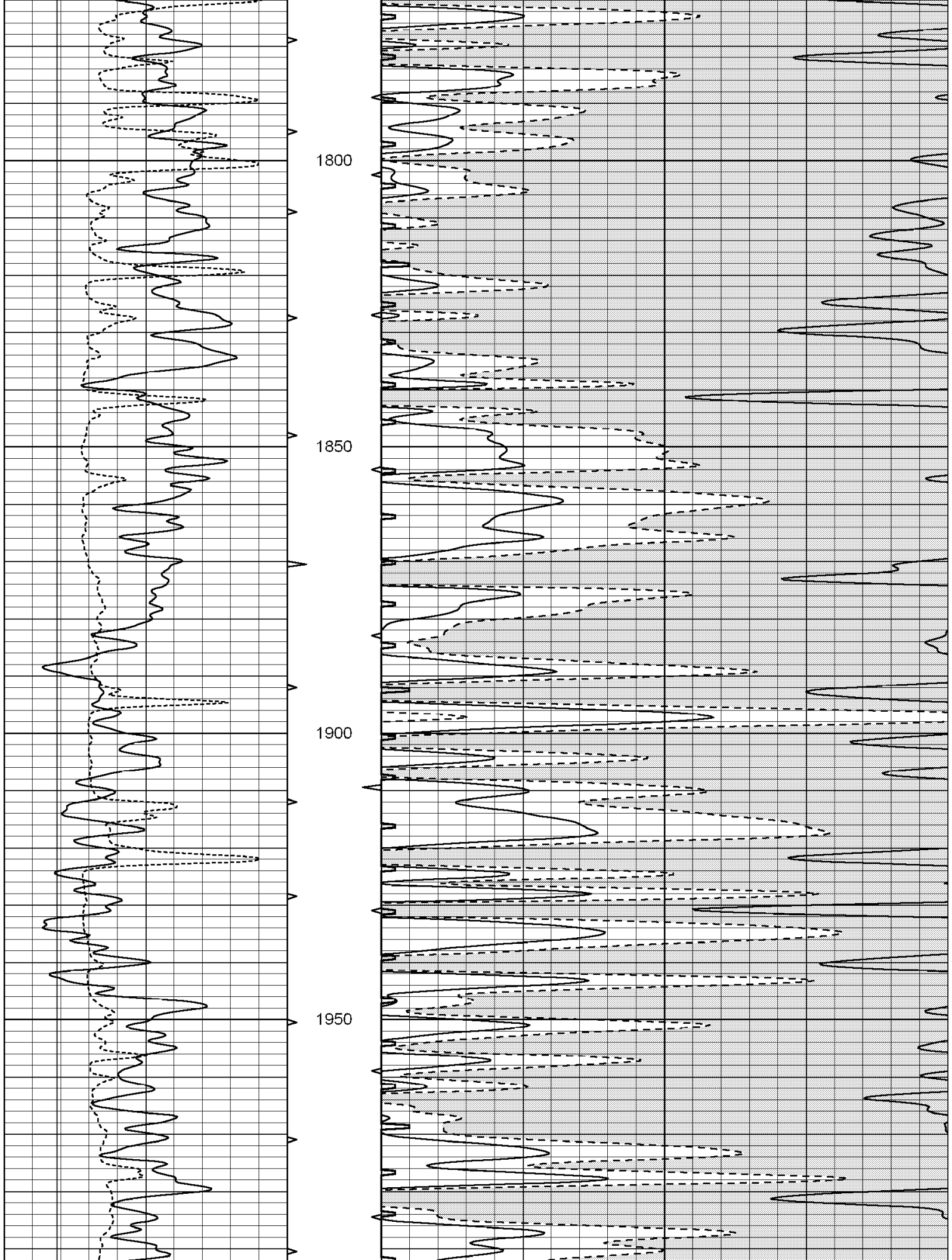


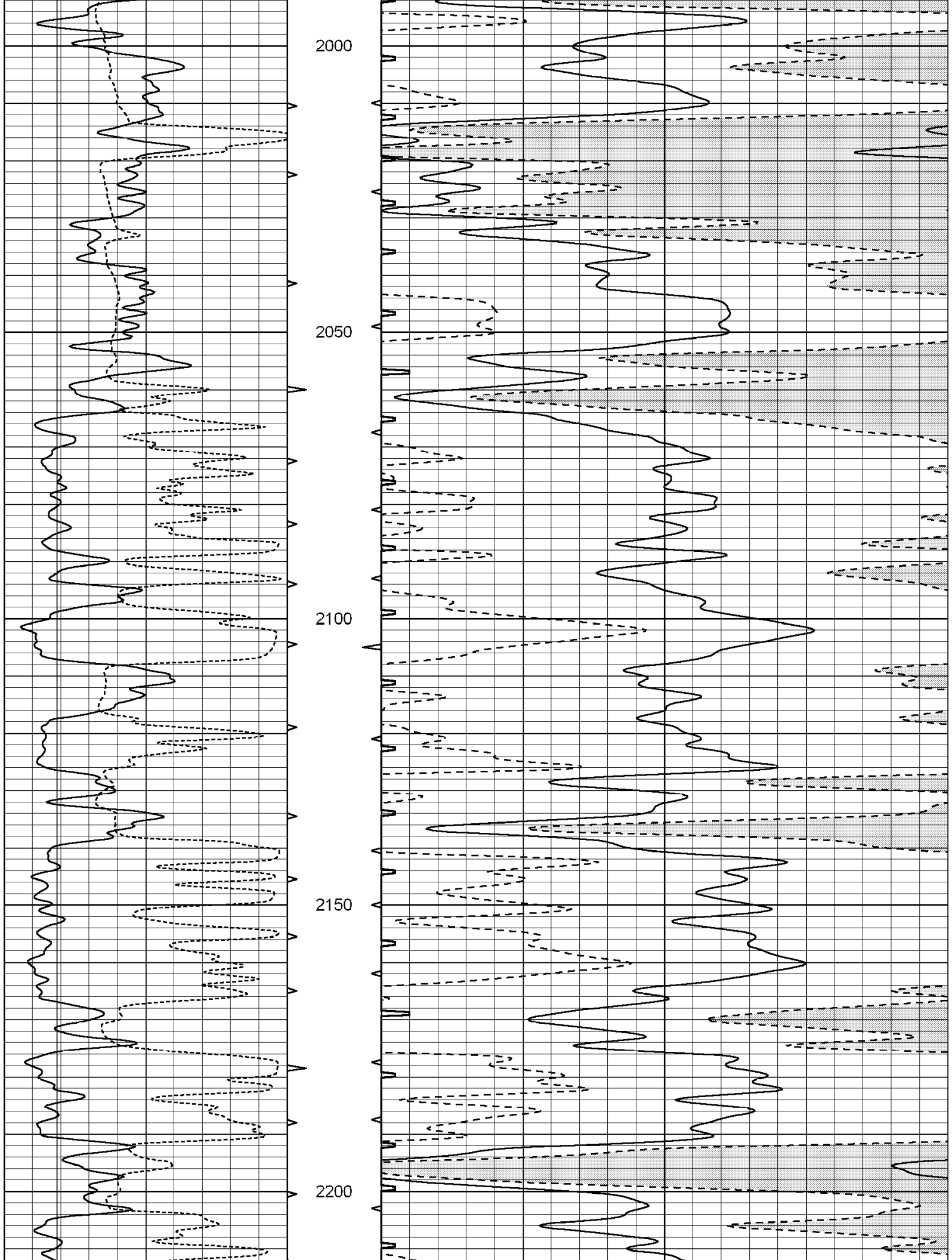


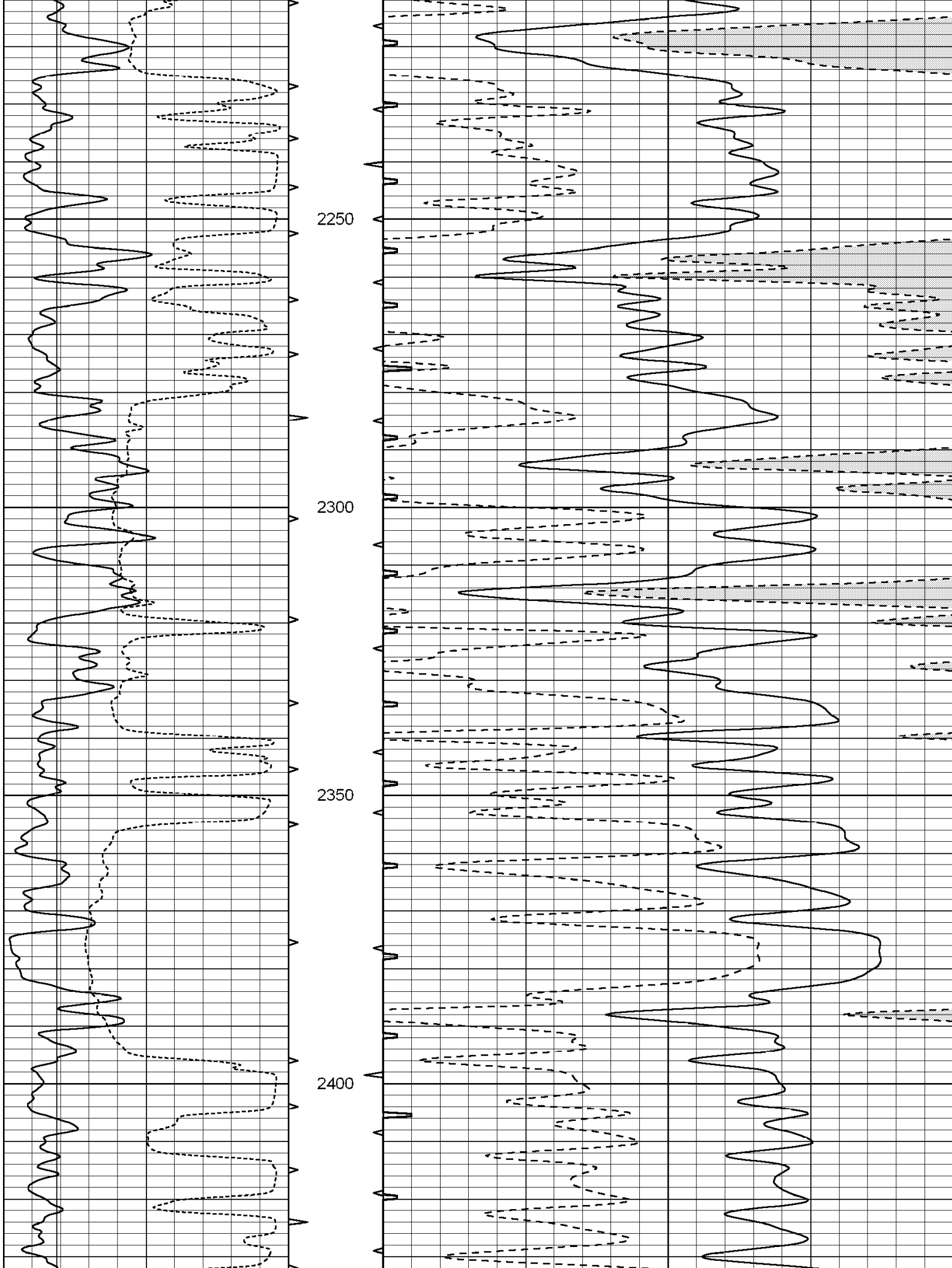


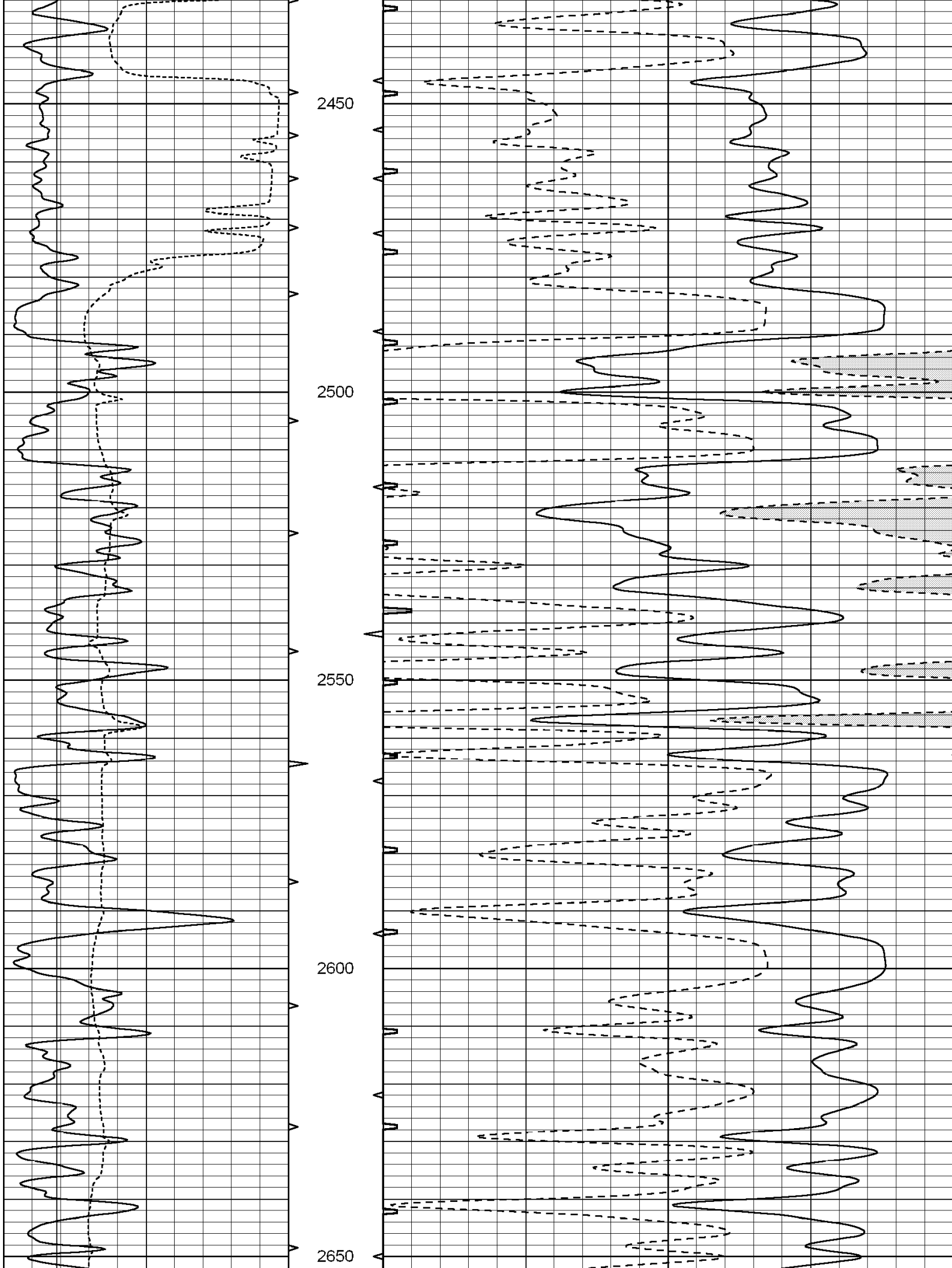


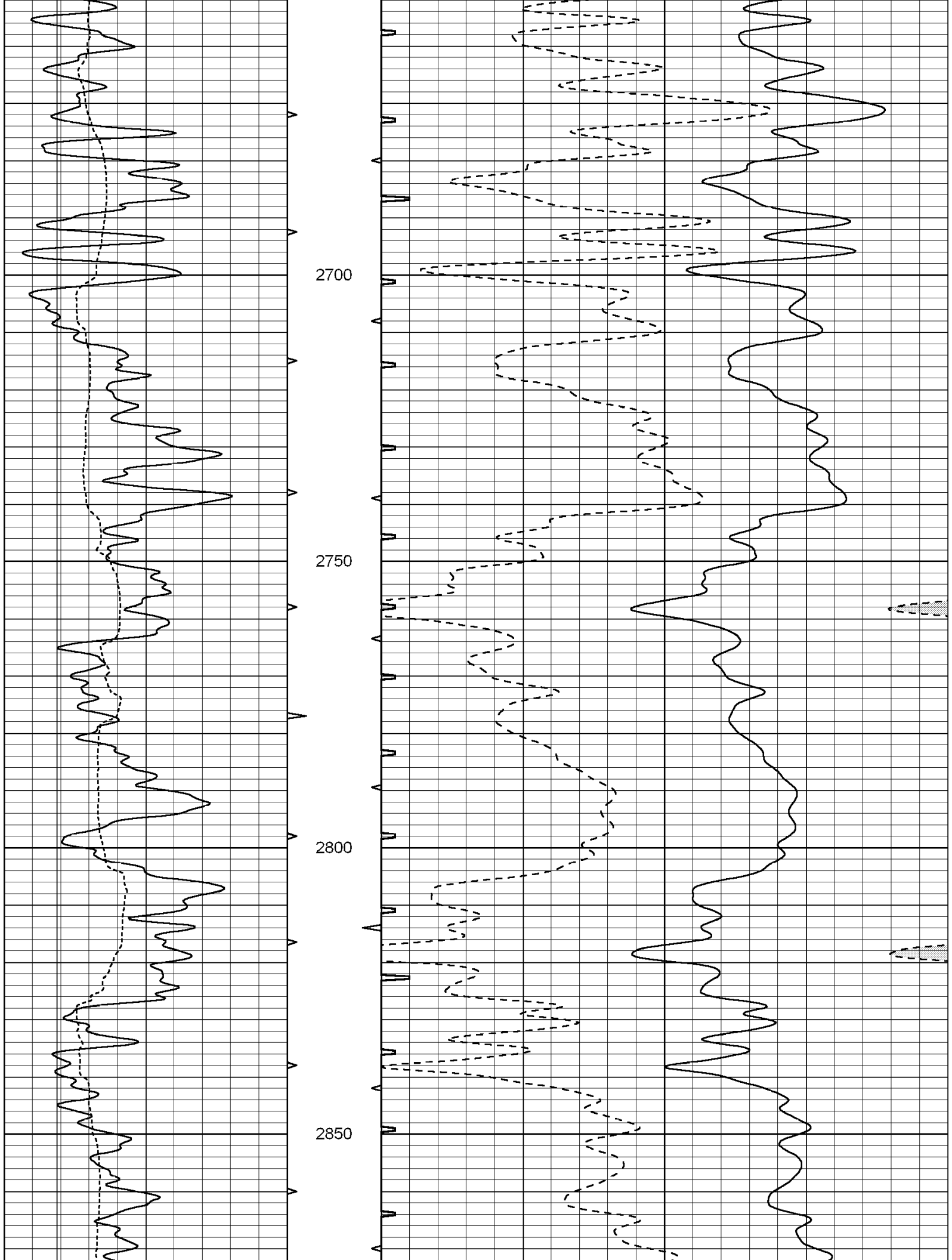


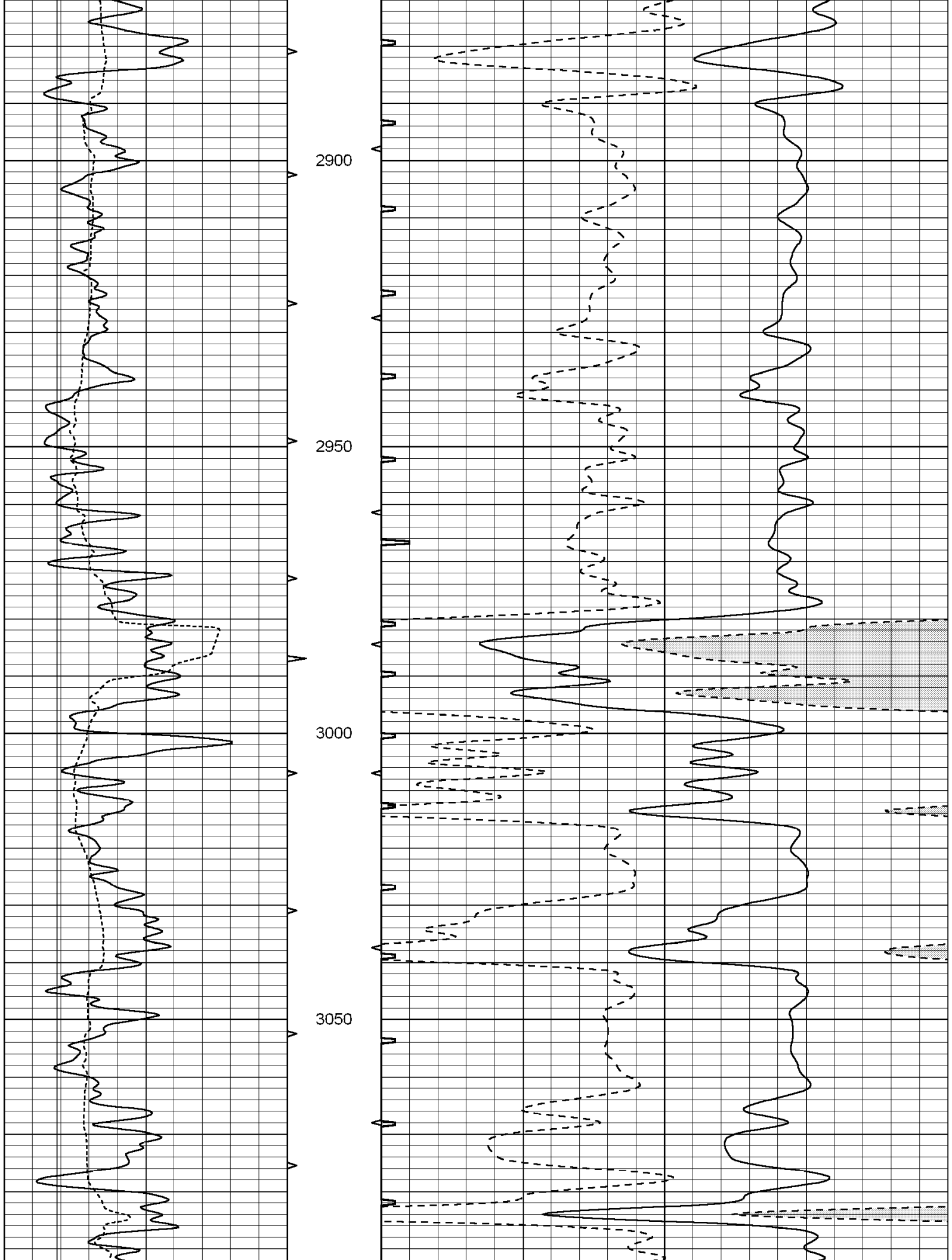


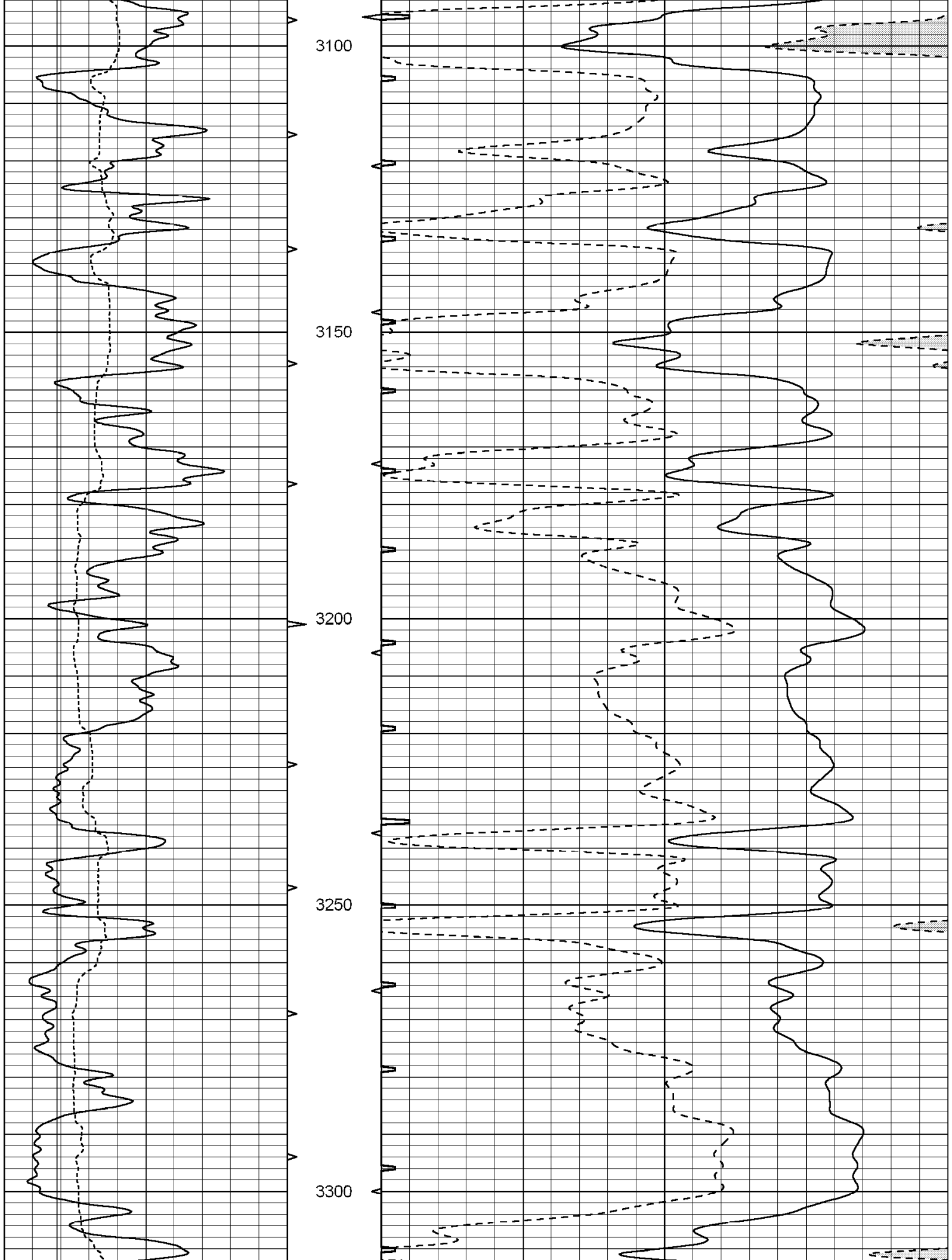


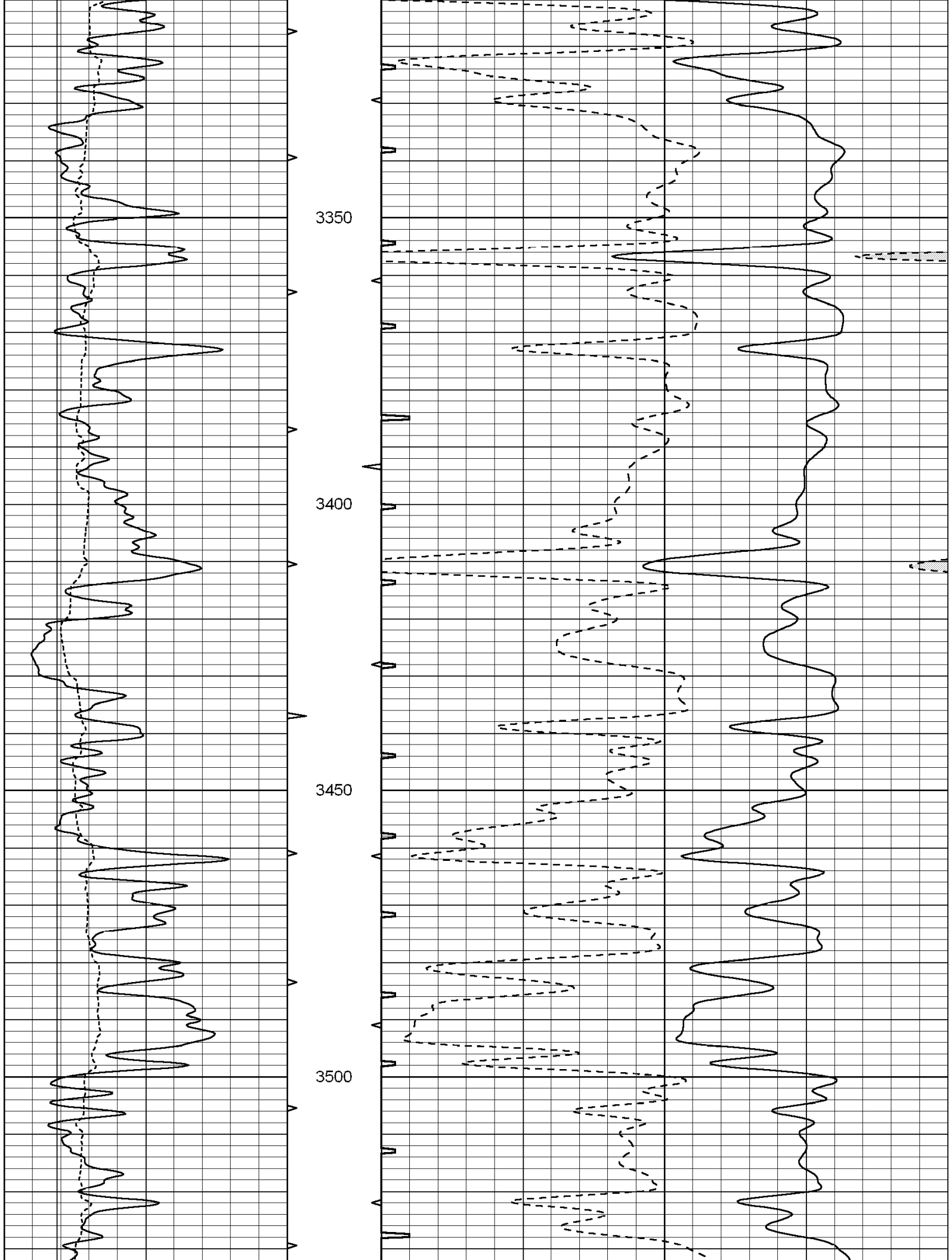


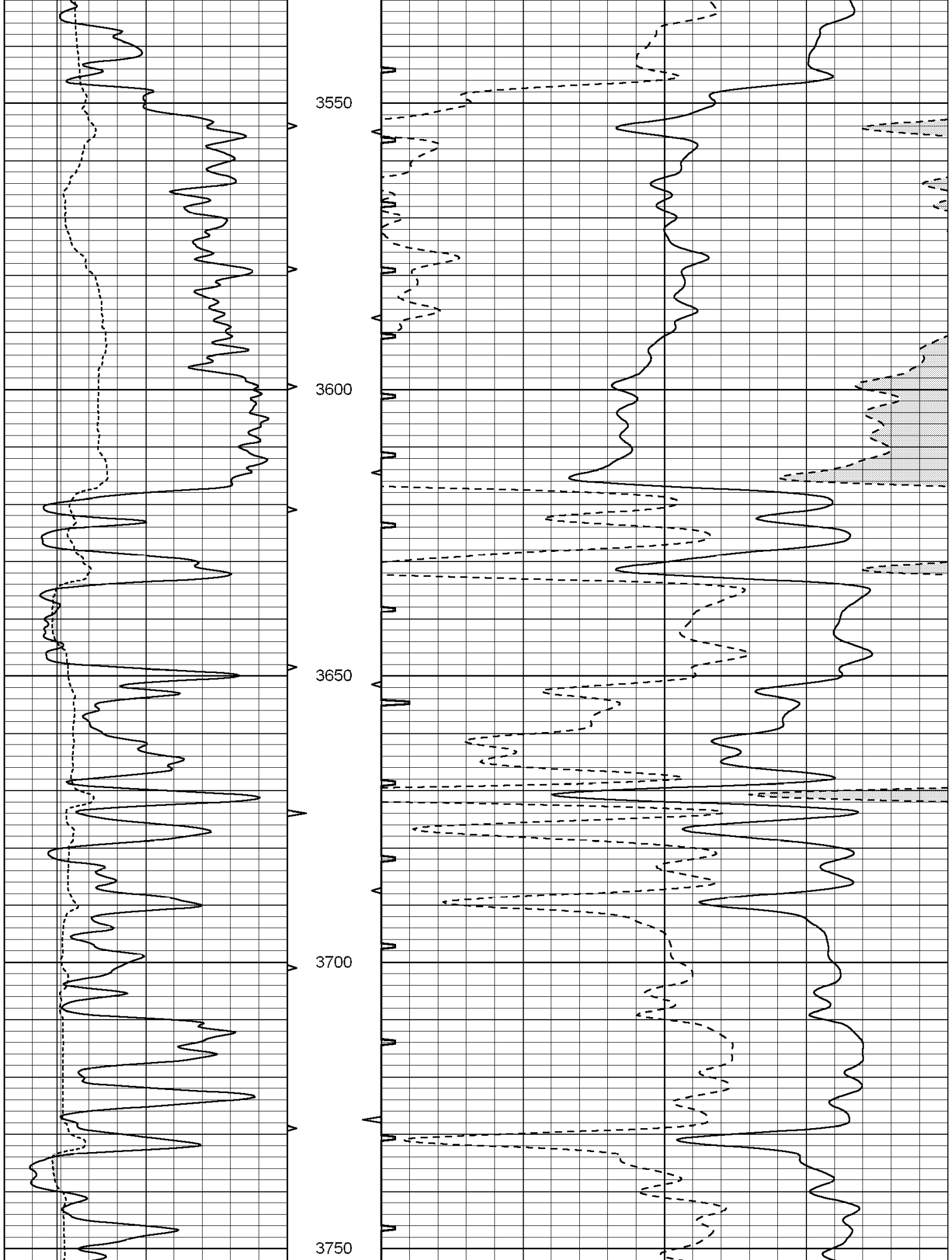


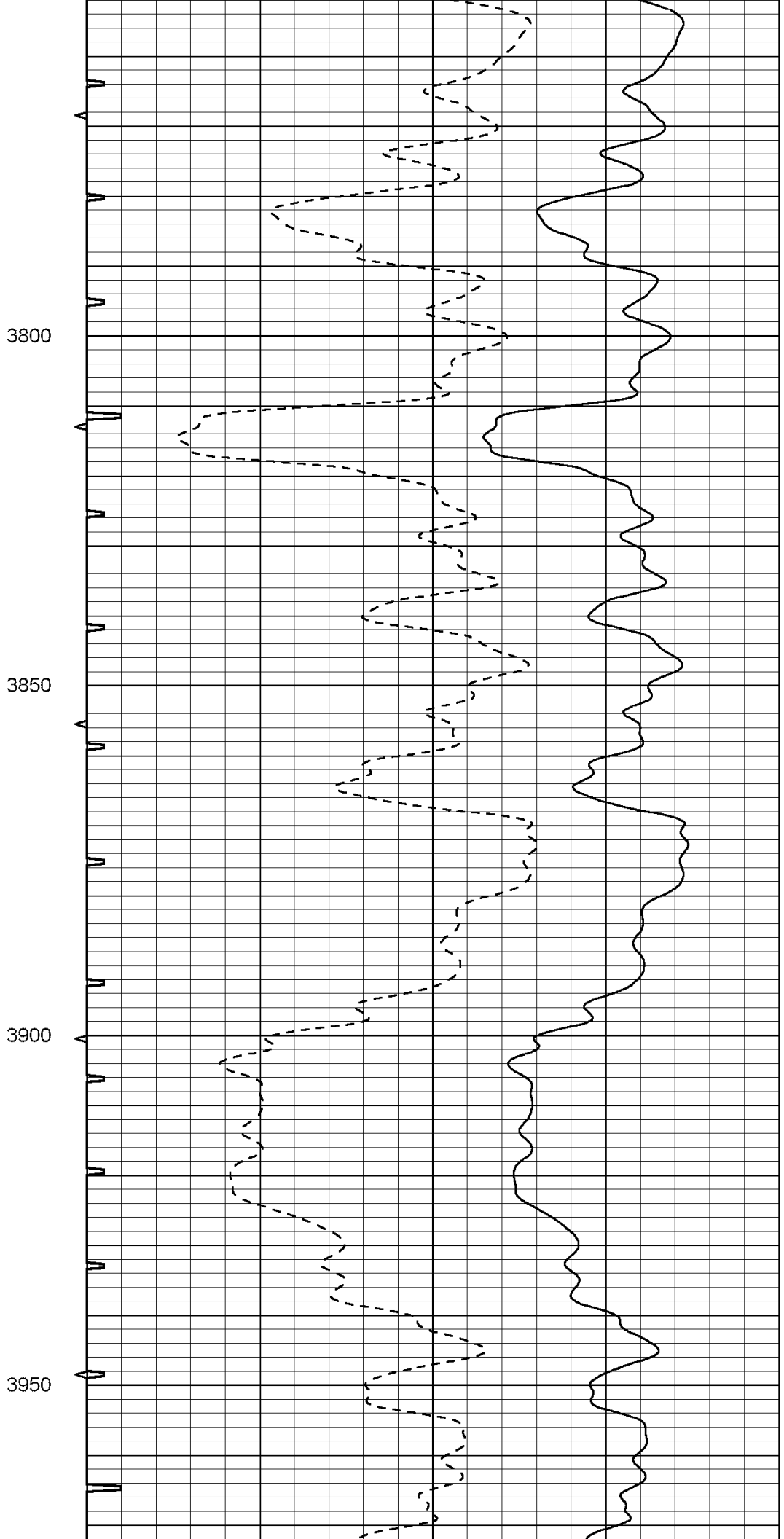
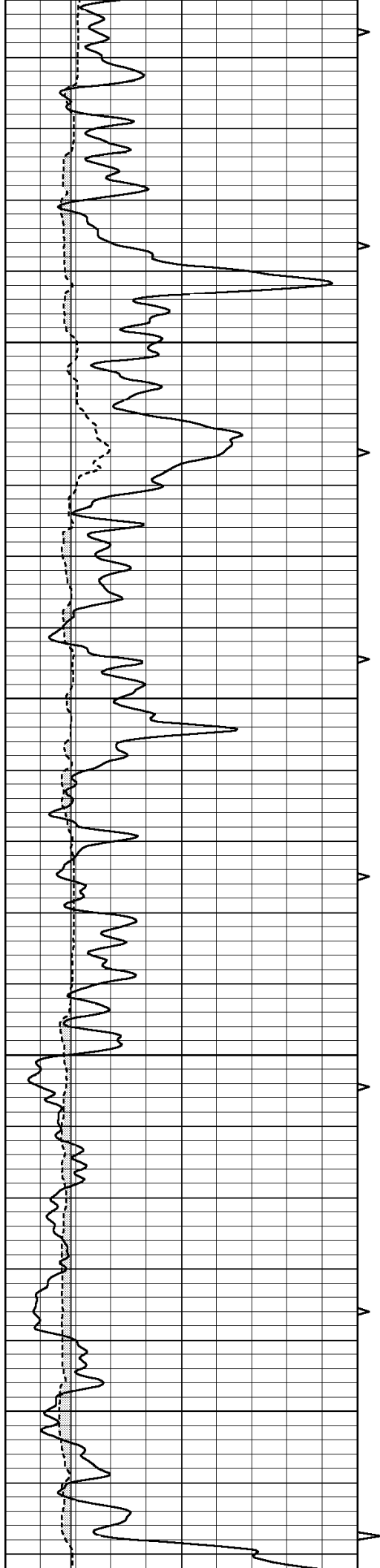


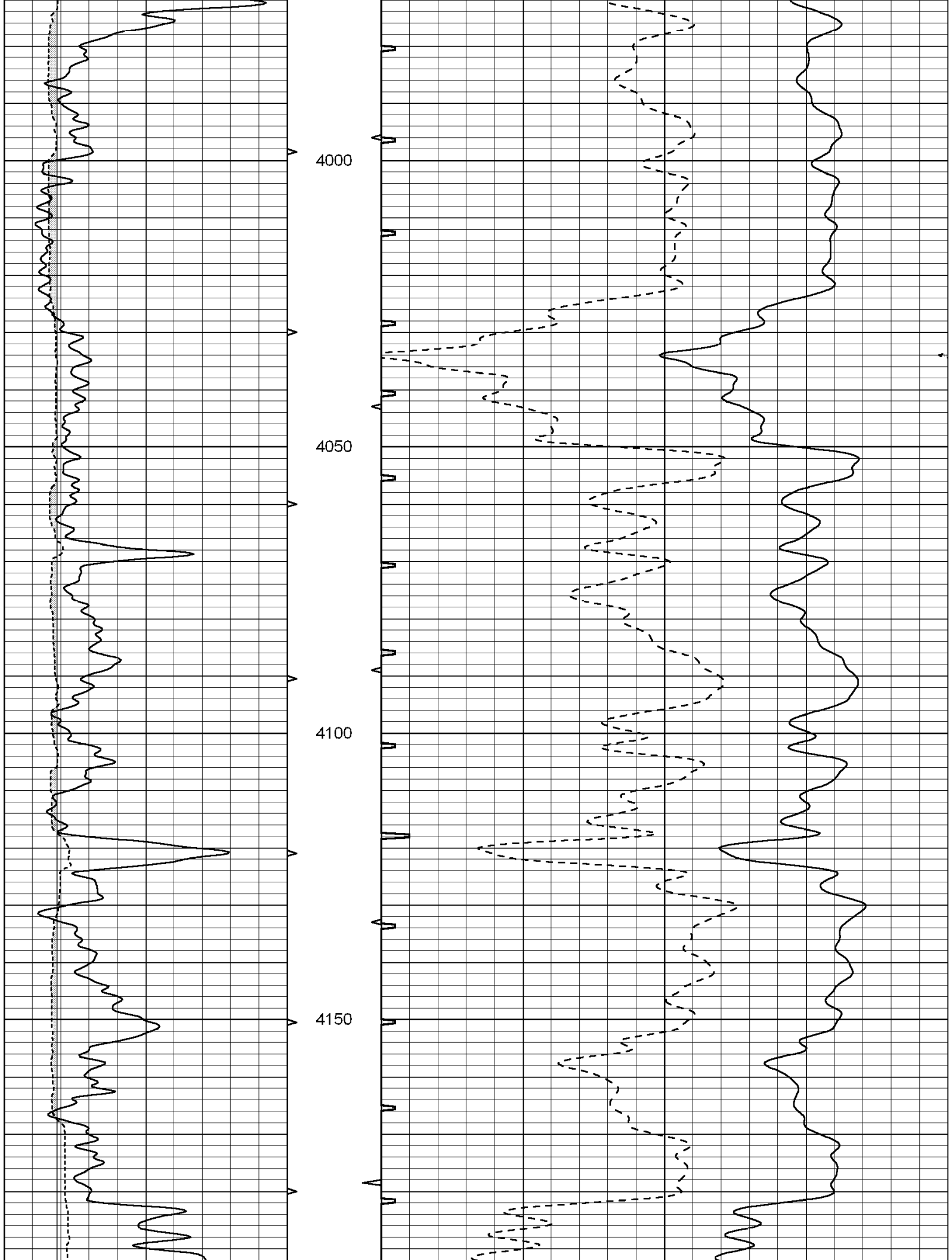


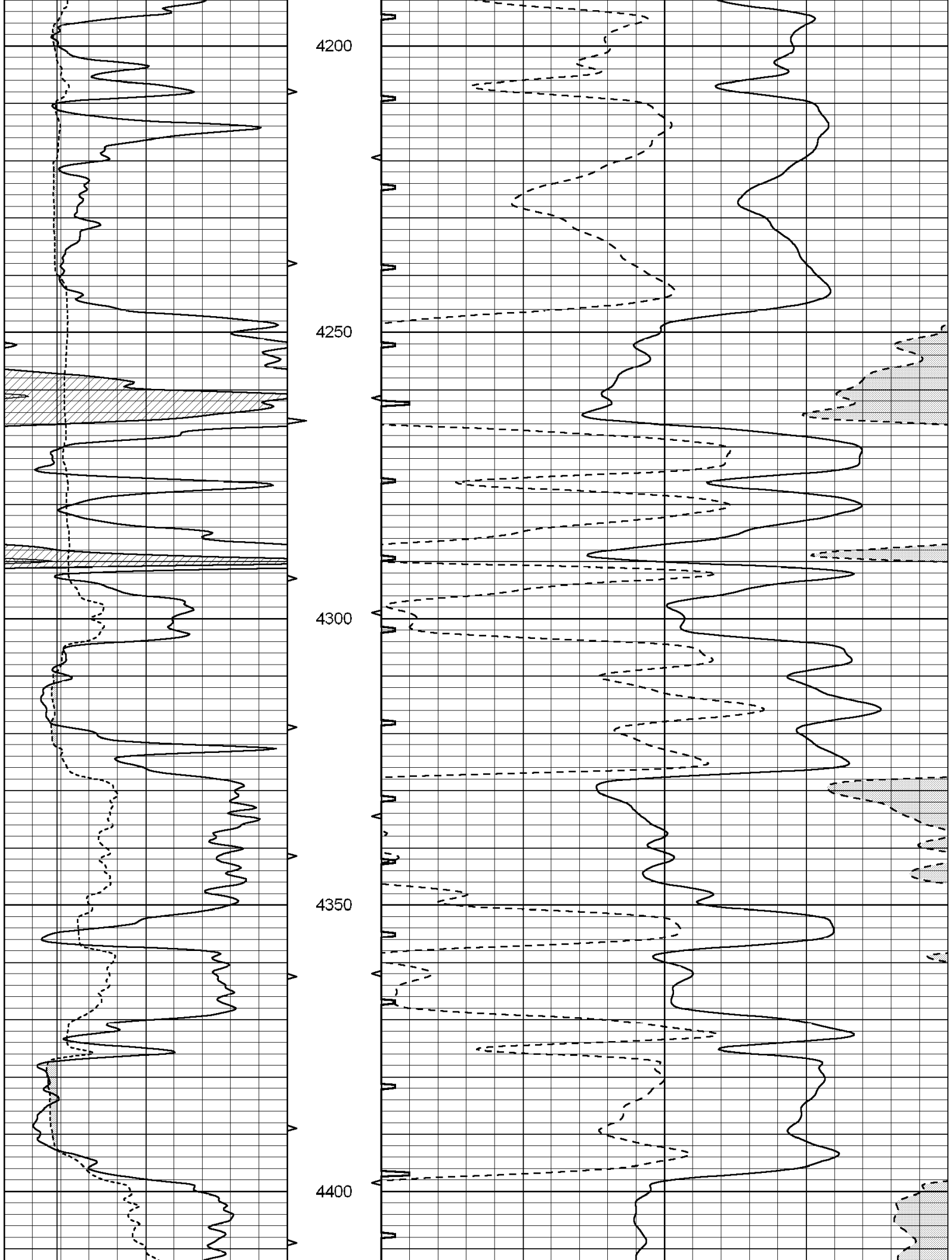


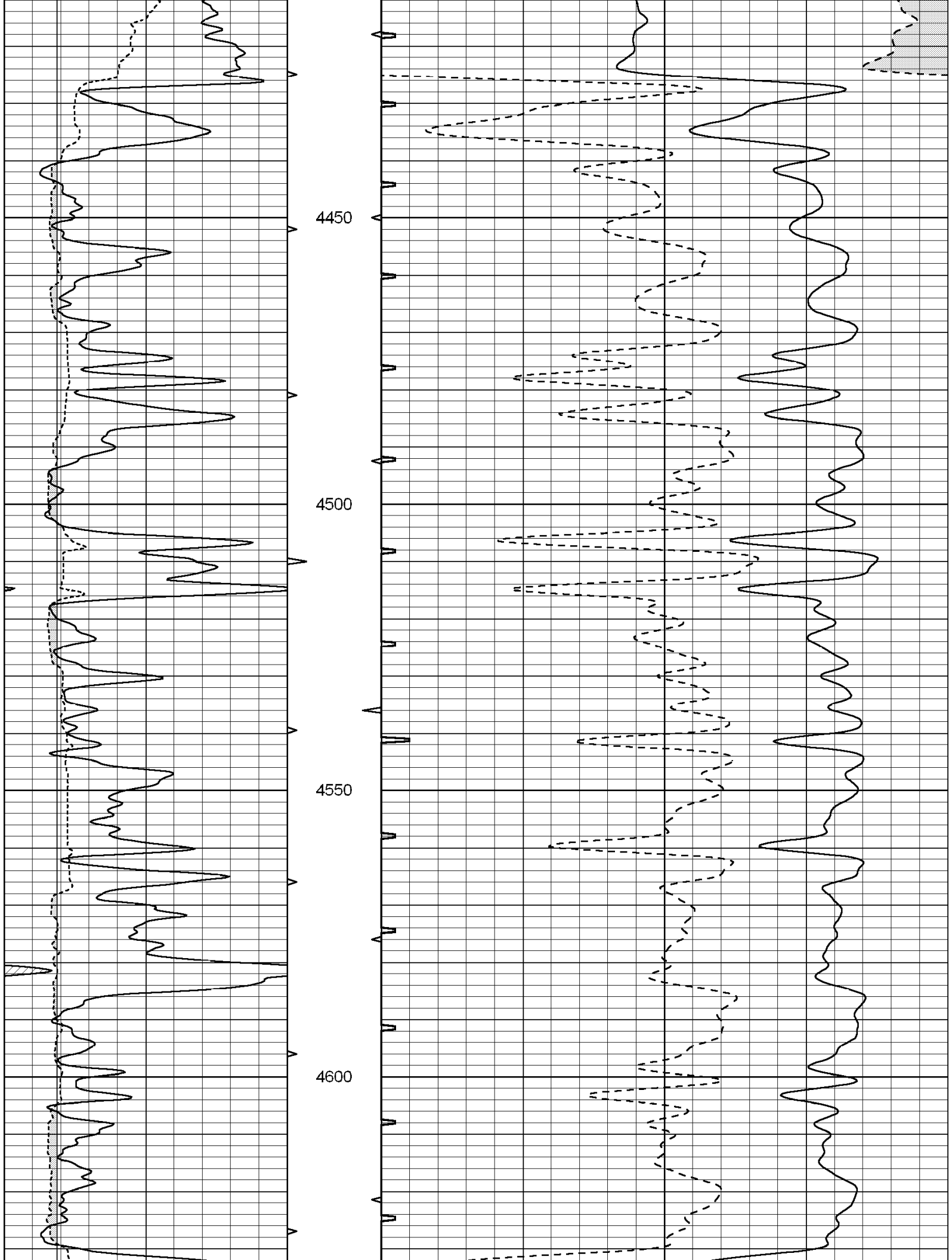


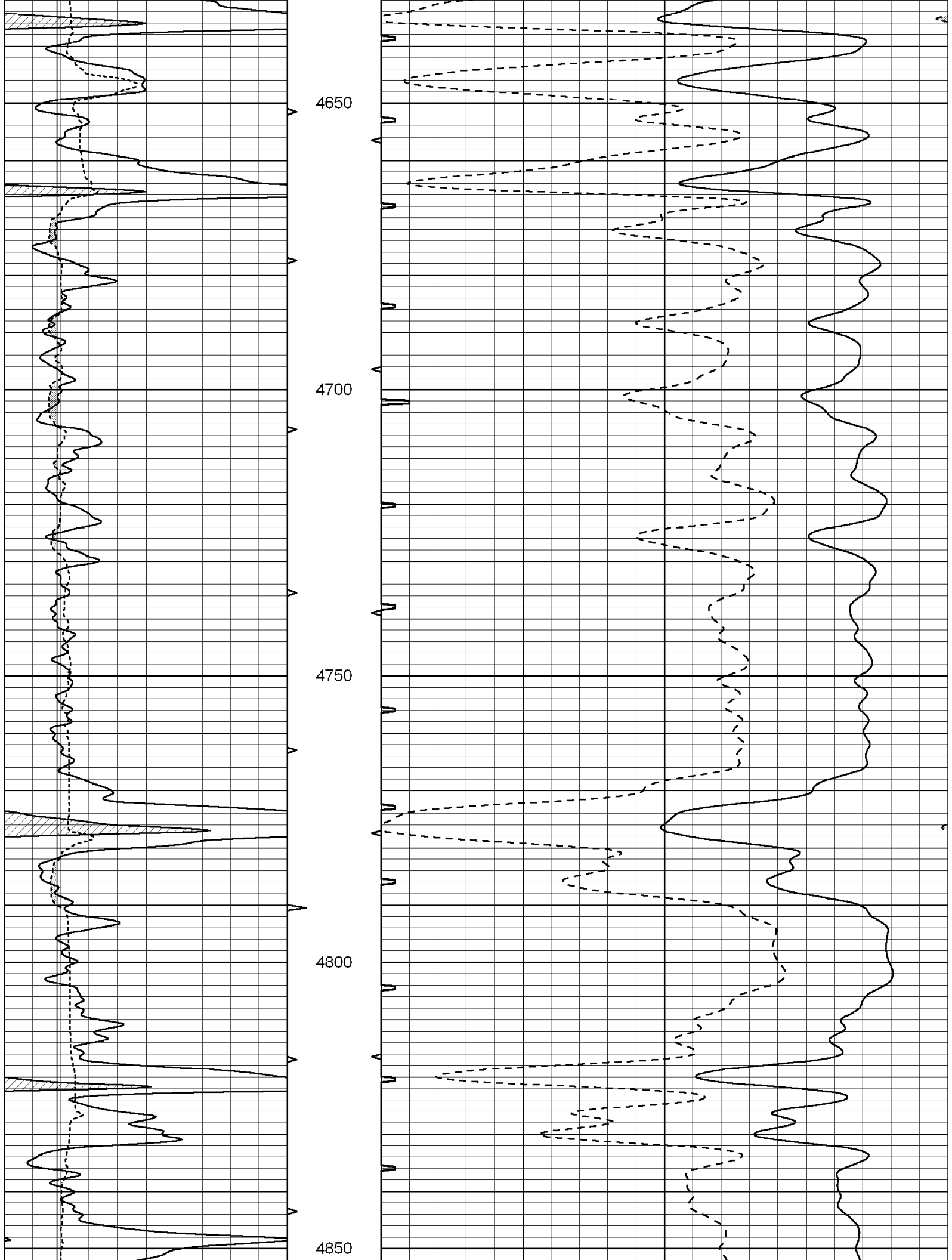


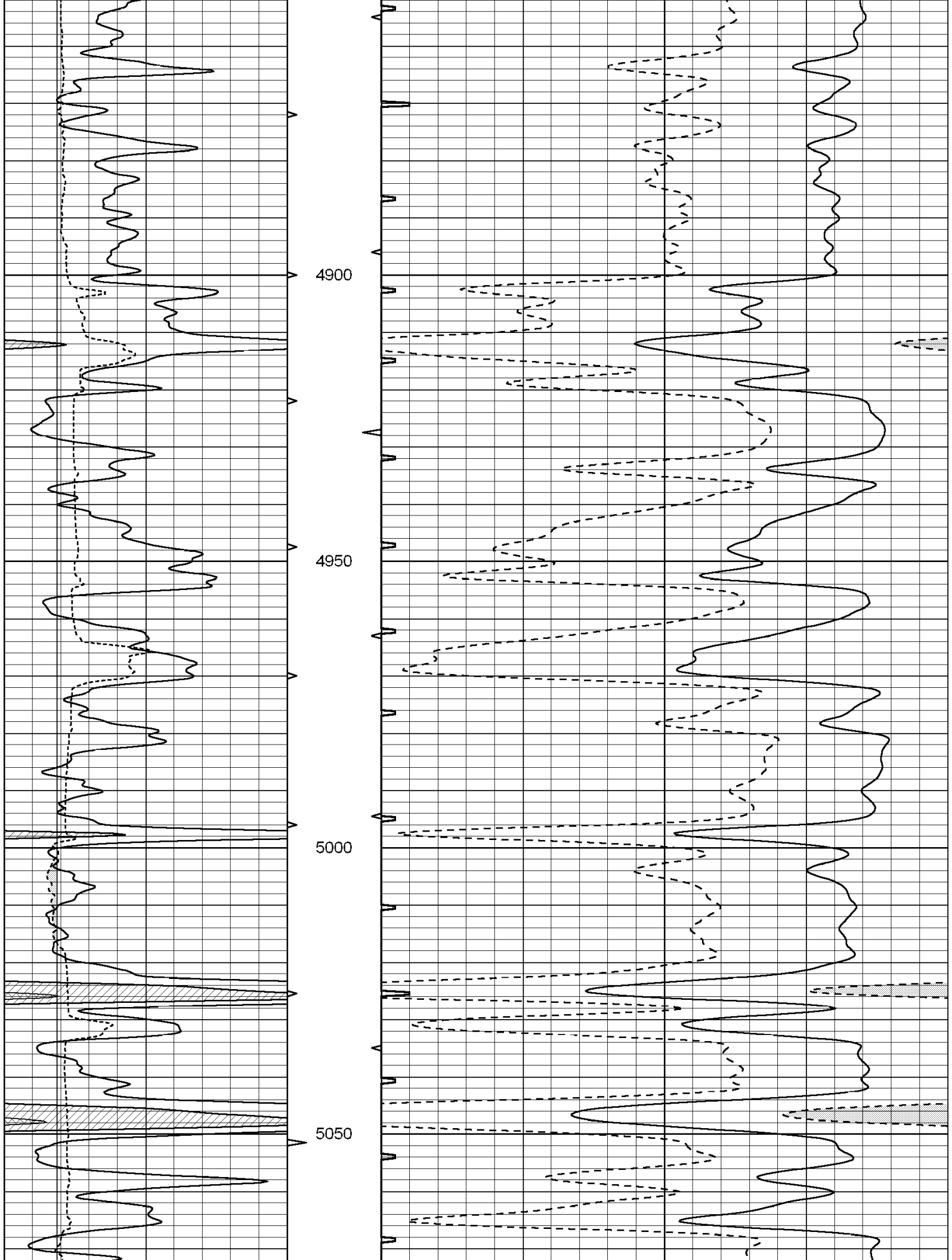


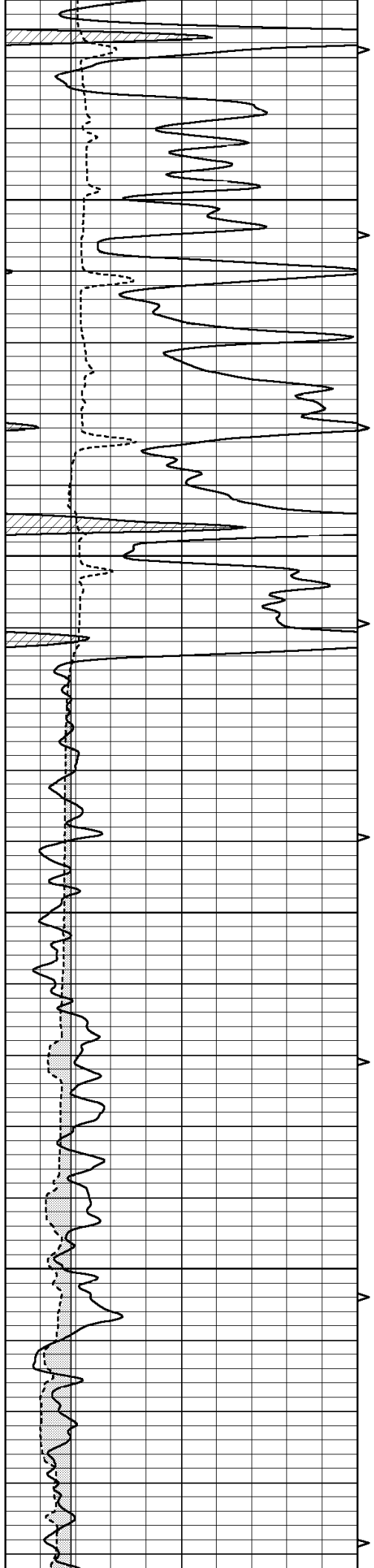










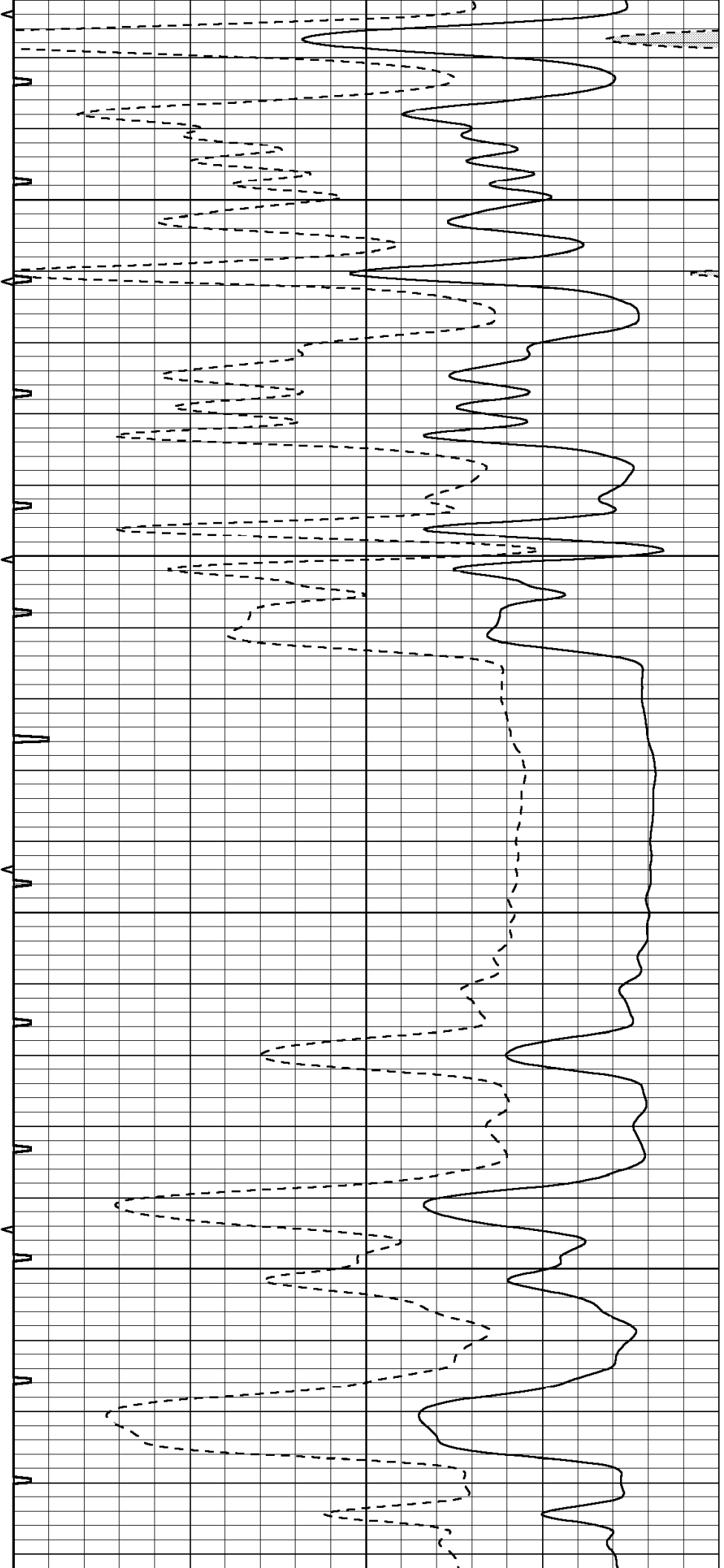


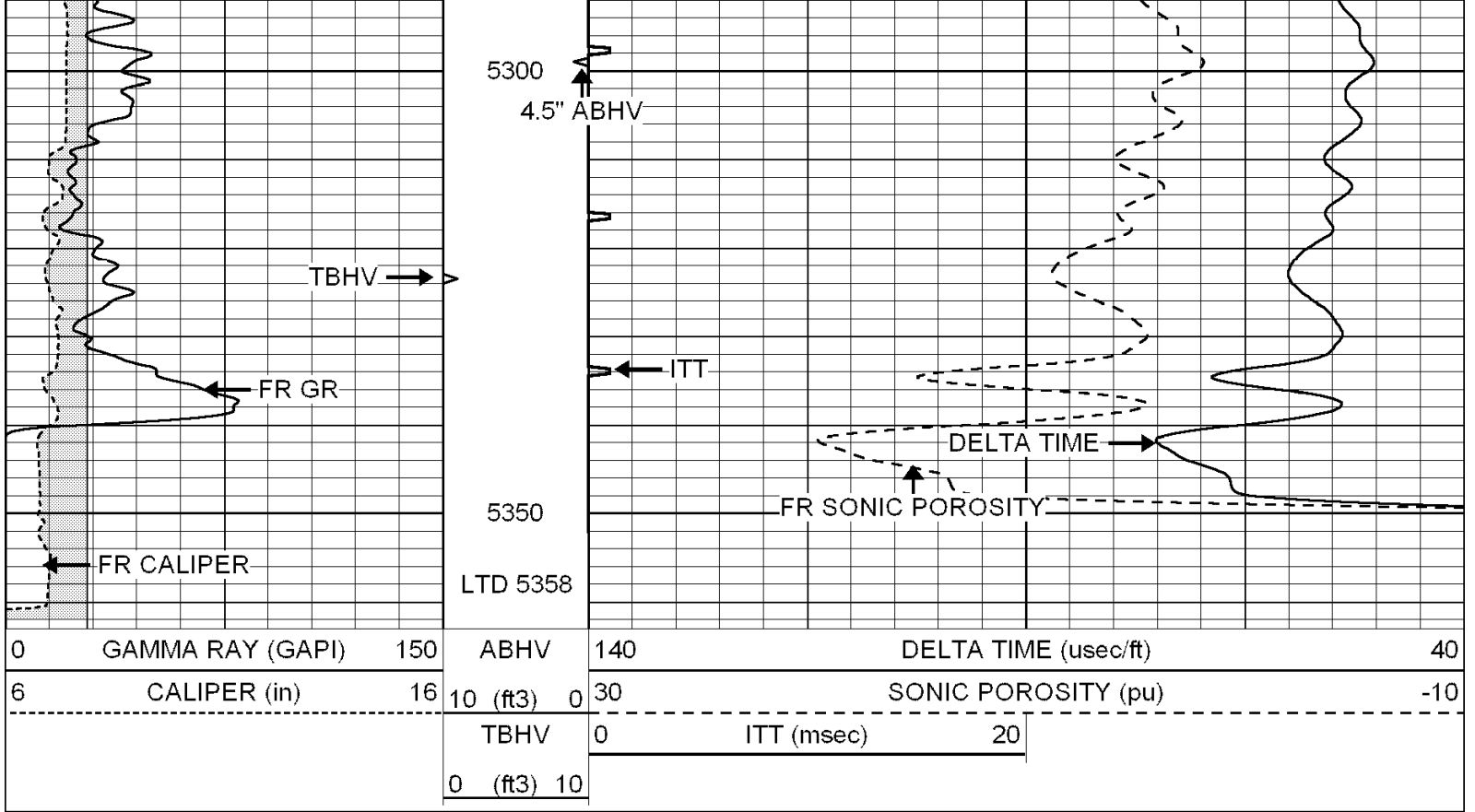
5100

5150

5200

5250





SUPERIOR
Hays,
Kansas

REPEAT SECTION

Database File: 004371pe.db
 Dataset Pathname: pass5.4
 Presentation Format: slt
 Dataset Creation: Sat Nov 14 20:16:06 2009
 Charted by: Depth in Feet scaled 1:240

