



SUPERIOR
Hays,
Kansas

**COMPENSATED
DENSITY / NEUTRON
PE LOG**

Company: VINCENT OIL CORPORATION
Well: FORD COUNTY LAND & CATTLE
Field: WILDCAT
County: FORD
State: KANSAS

Company: VINCENT OIL CORPORATION
Well: FORD COUNTY LAND & CATTLE CO. #2-5
Field: WILDCAT
County: FORD State: KANSAS

Location: 1980' FSL & 960' FWL
API #: 15-057-20644-0000
SEC 5 TWP 29S RGE 23W
Permanent Datum: GROUND LEVEL Elevation: 2473
Log Measured From: KELLY BUSHING 12' A.G.L.
Drilling Measured From: KELLY BUSHING
Other Services: DIL/MEL SONIC
Elevation: K.B. 2485, D.F. 2483, G.L. 2473

Date	11/14/09
Run Number	ONE
Depth Driller	5350
Depth Logger	5358
Bottom Logged Interval	5334
Top Log Interval	4100
Casing Driller	8 5/8" @ 561'
Casing Logger	558
Bit Size	7 7/8
Type Fluid In Hole	CHEMICAL MUD
Density / Viscosity	8.9/7.1
pH / Fluid Loss	10.0/13.6
Source of Sample	FLOWLINE
Rm @ Meas. Temp	.440 @ 70F
Rmf @ Meas. Temp	.330 @ 70F
Rmc @ Meas. Temp	.528 @ 70F
Source of Rmf / Rmc	MEASUREMENT
Rm @ BHT	.241 @ 128F
Time Circulation Stopped	3 HOURS
Time Logger on Bottom	1:30 P.M.
Maximum Recorded Temperature	128F
Equipment Number	0836
Location	HAYS, KANSAS
Recorded By	JEFF LUEBBERS
Witnessed By	KEN LEBLANC

<<< Fold Here >>>

All interpretations are opinions based on inferences from electrical or other measurements and we cannot and do not guarantee the accuracy or correctness of any interpretation, and we shall not, except in the case of gross or willful negligence on our part, be liable or responsible for any loss, costs, damages, or expenses incurred or sustained by anyone resulting from any interpretation made by any of our officers, agents or employees. These interpretations are also subject to our general terms and conditions set out in our current Price Schedule.

Comments

THANK YOU FOR USING SUPERIOR WELL SERVICE HAYS, KANSAS (785) 628-6395
DIRECTIONS
FORD, KS. (HWY 400 & SADDLE RD.) 8 W. TO RD. "118", 7 S. TO "WILDFIRE RD.", 1 E., N. INTO

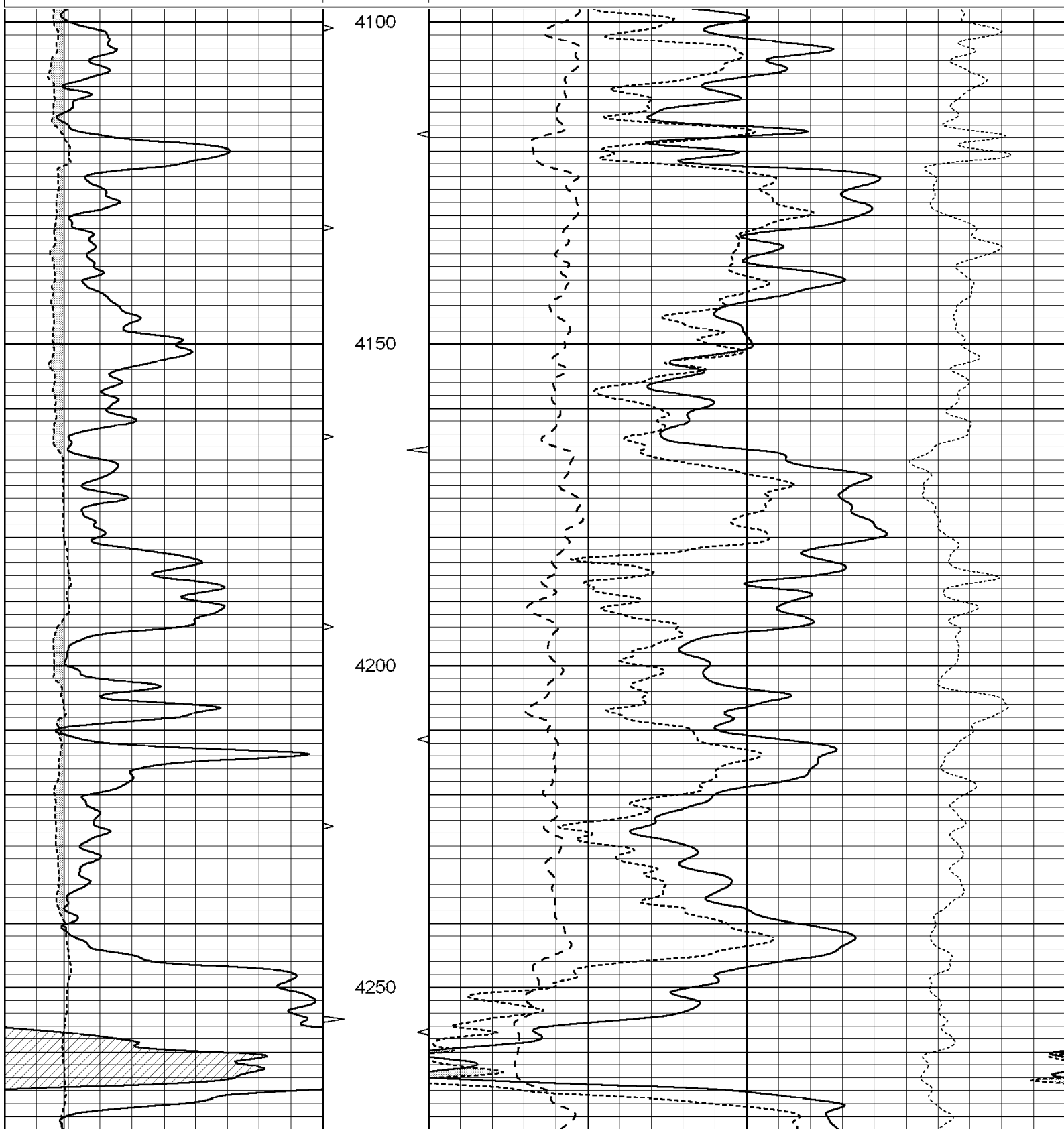


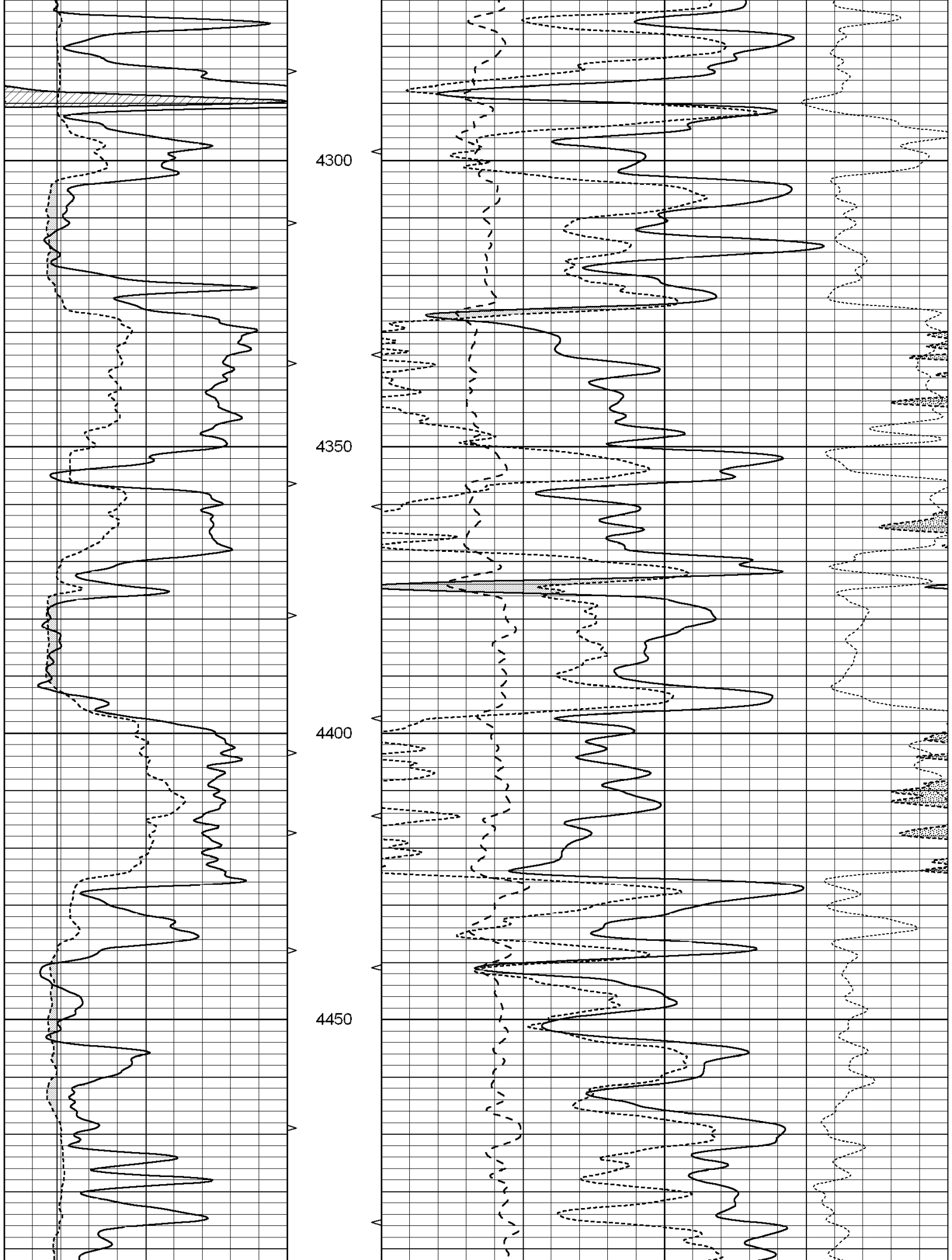
SUPERIOR
Hays,
Kansas

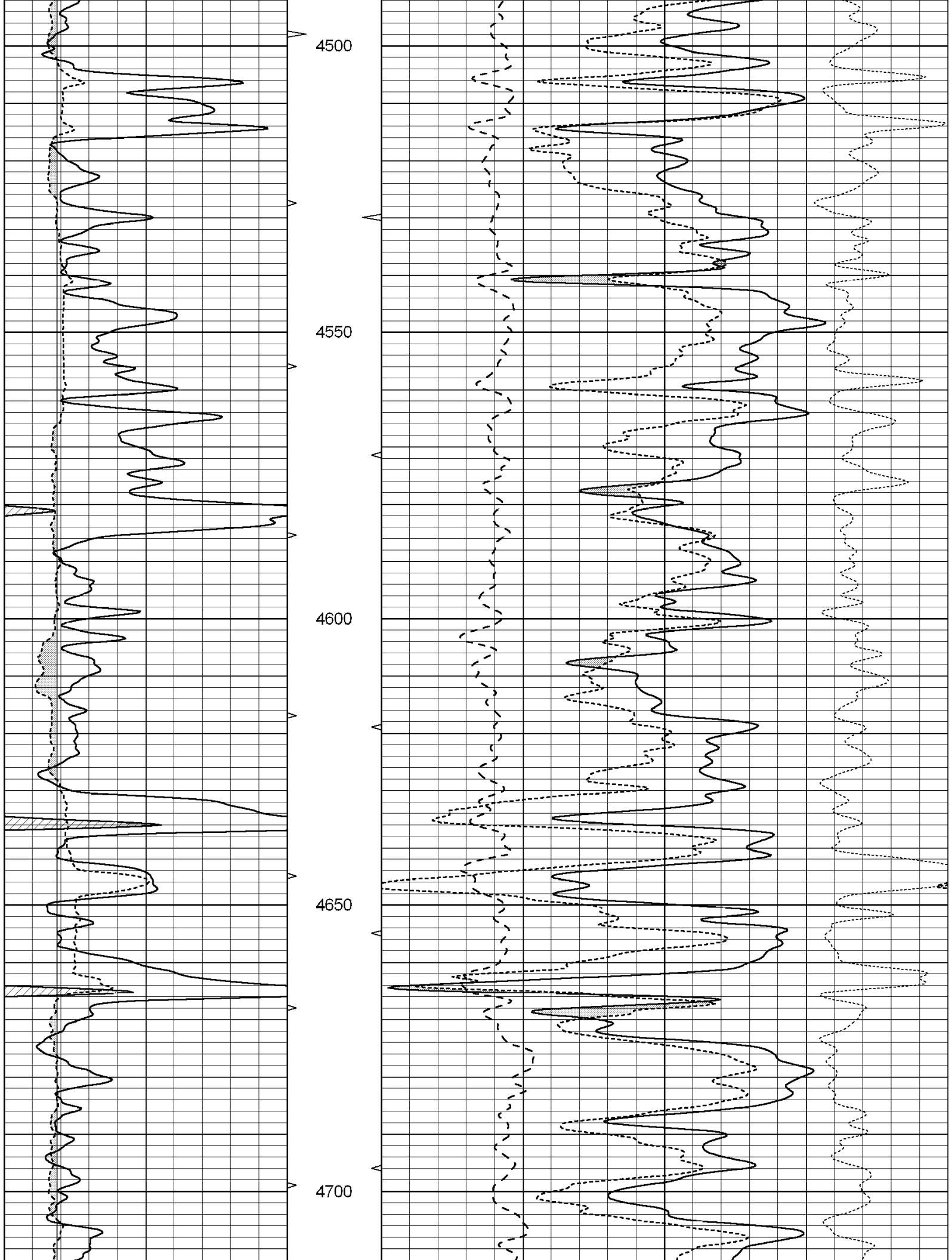
MAIN SECTION

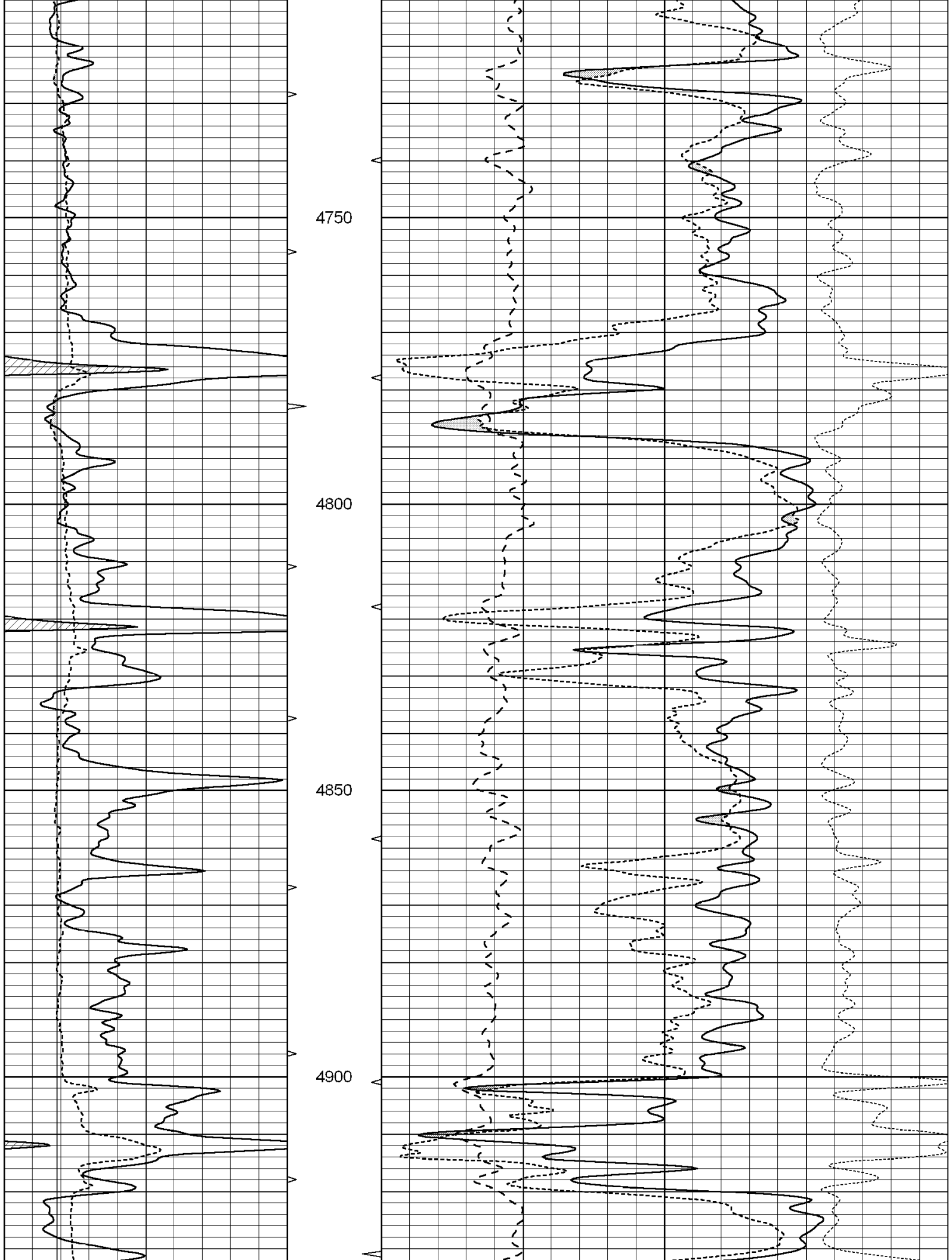
Database File: 004371pe.db
 Dataset Pathname: pass3.7
 Presentation Format: ldt_neu
 Dataset Creation: Sat Nov 14 14:57:50 2009 by Calc Open-Cased 060407
 Charted by: Depth in Feet scaled 1:240

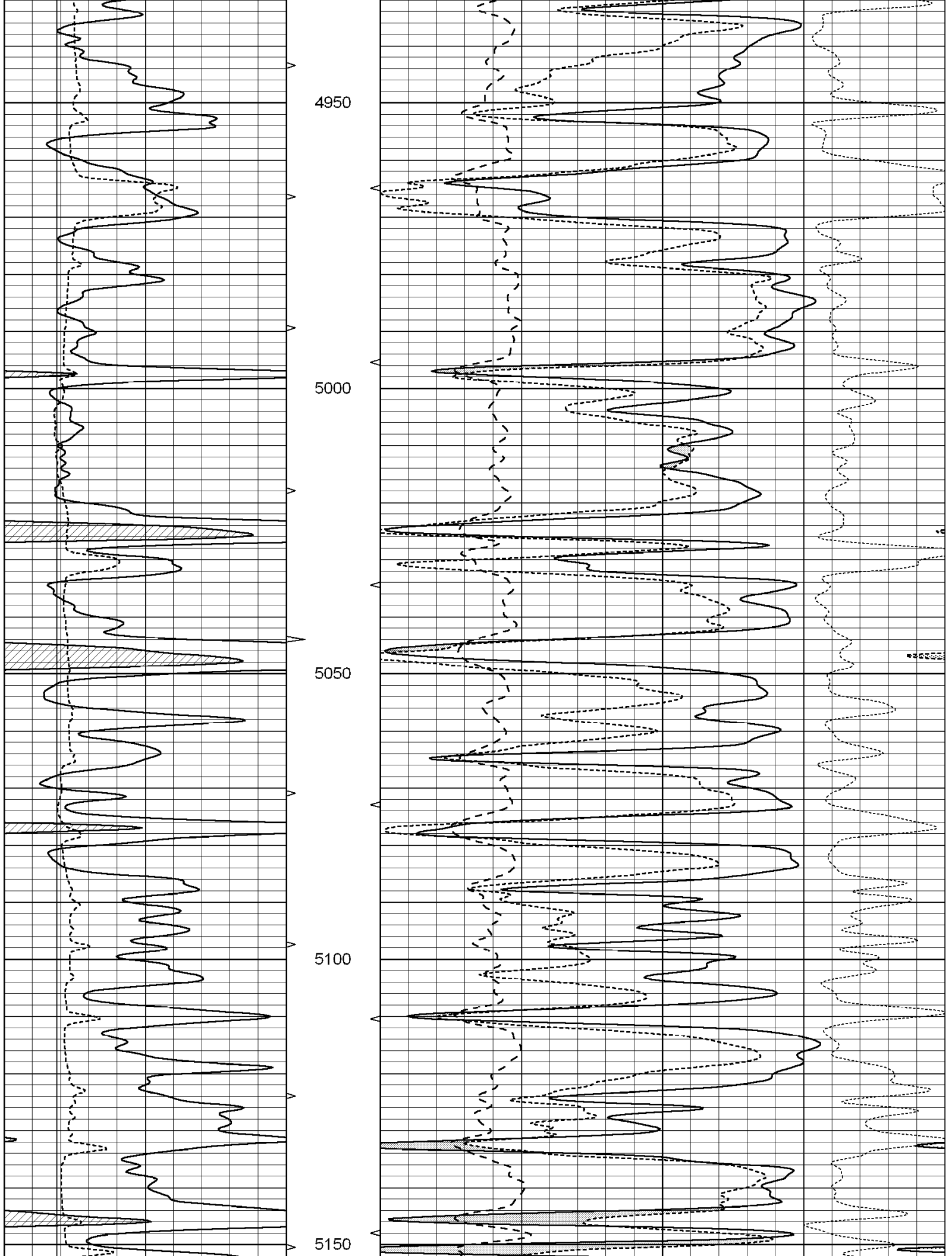
0	GAMMA RAY (GAPI)	150	ABHV	30	COMPENSATED DENSITY (pu)		-10
6	CALIPER (in)	16	10 (ft3)	0	COMPENSATED NEUTRON (pu)		-10
			TBHV	0	PE	10 -0.25	CORRECTION (g/cc) 0.25
			0 (ft3) 10				

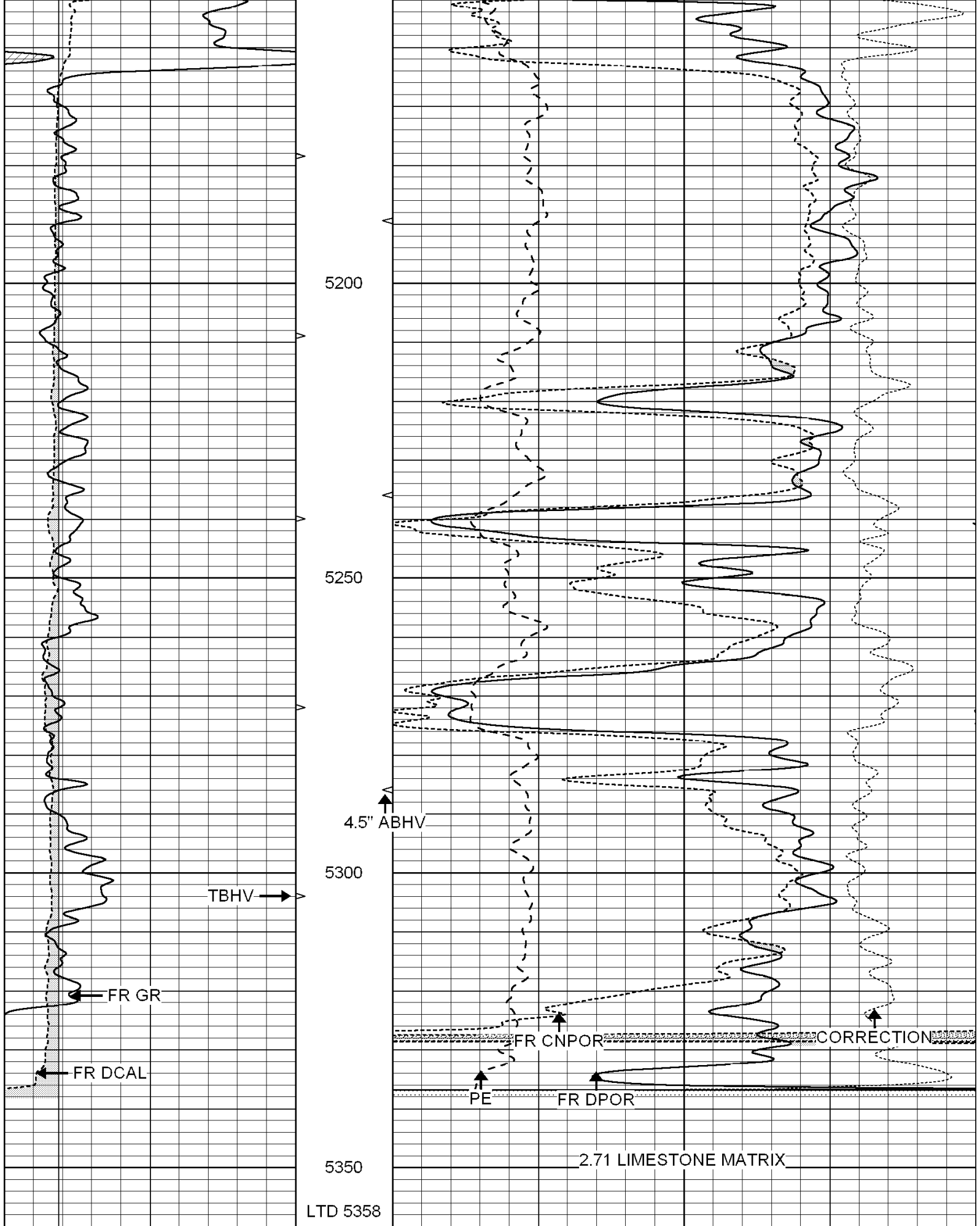












0	GAMMA RAY (GAPI)	150	ABHV	30	COMPENSATED DENSITY (pu)	-10			
6	CALIPER (in)	16	10 (ft3)	0	30	COMPENSATED NEUTRON (pu)	-10		
			TBHV	0	PE	10	0.25	CORRECTION (g/cc)	0.25

TBHV 0 PE 10 -0.25 CORRECTION (g/cc) 0.25
 0 (ft3) 10

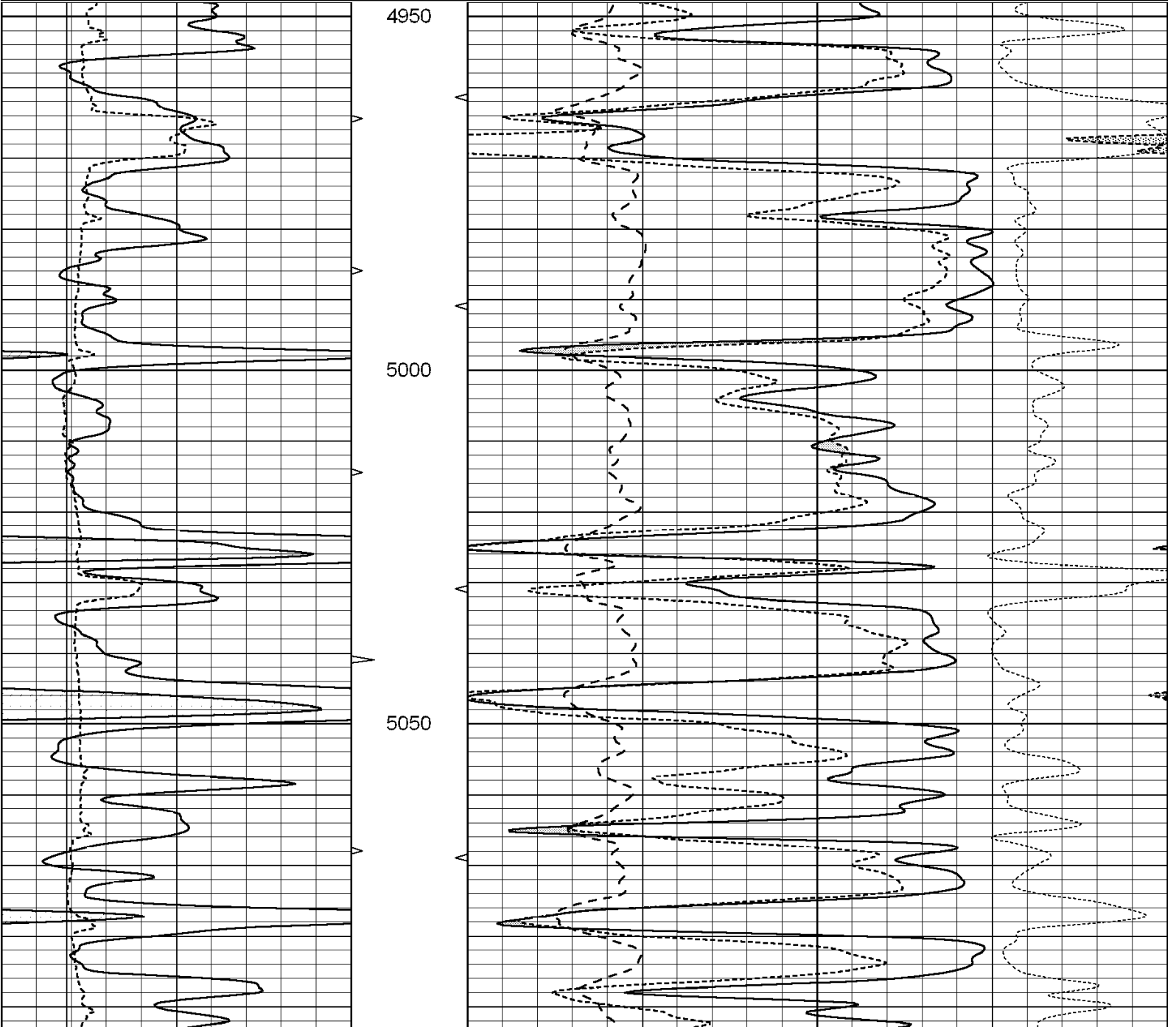


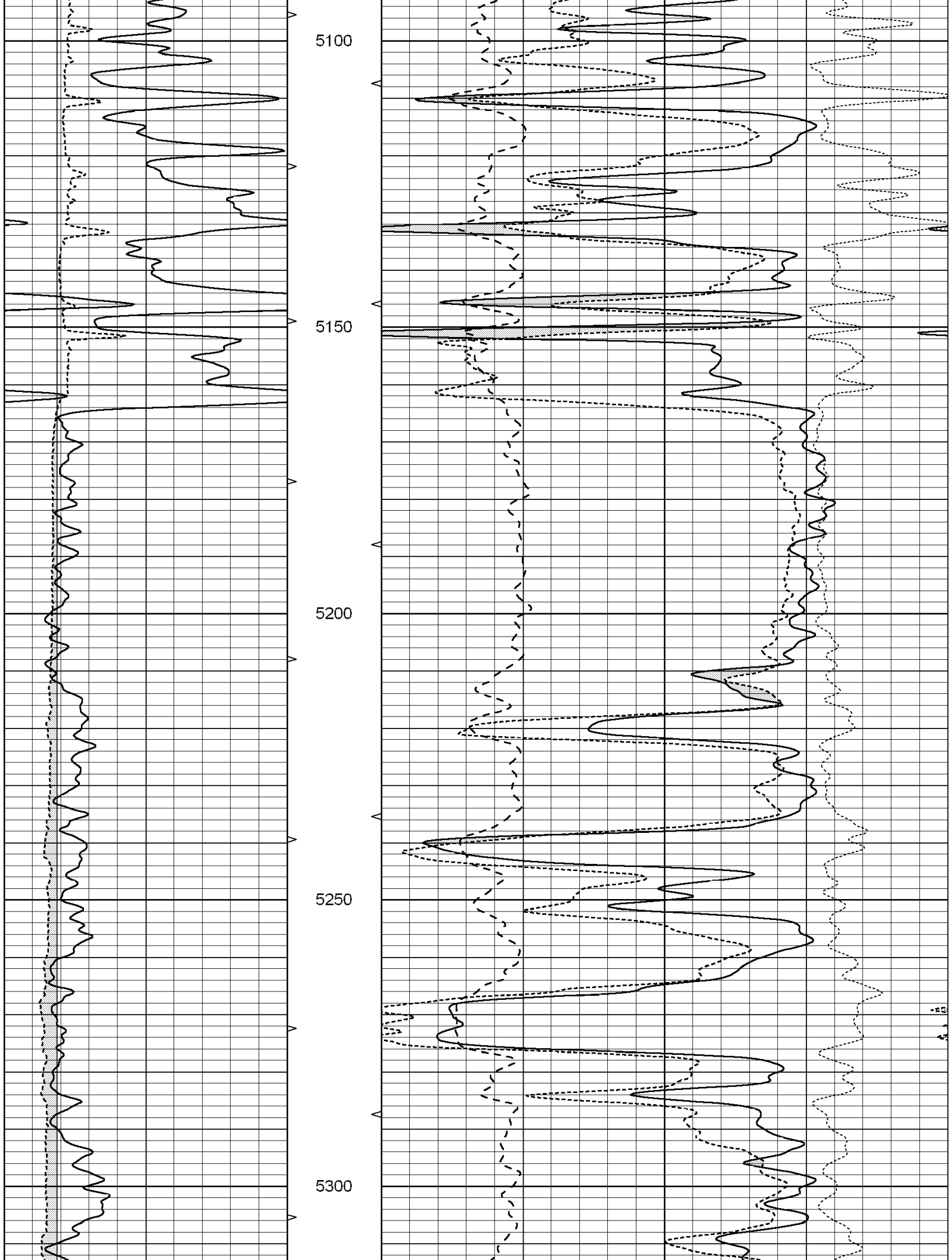
SUPERIOR
 Hays,
 Kansas

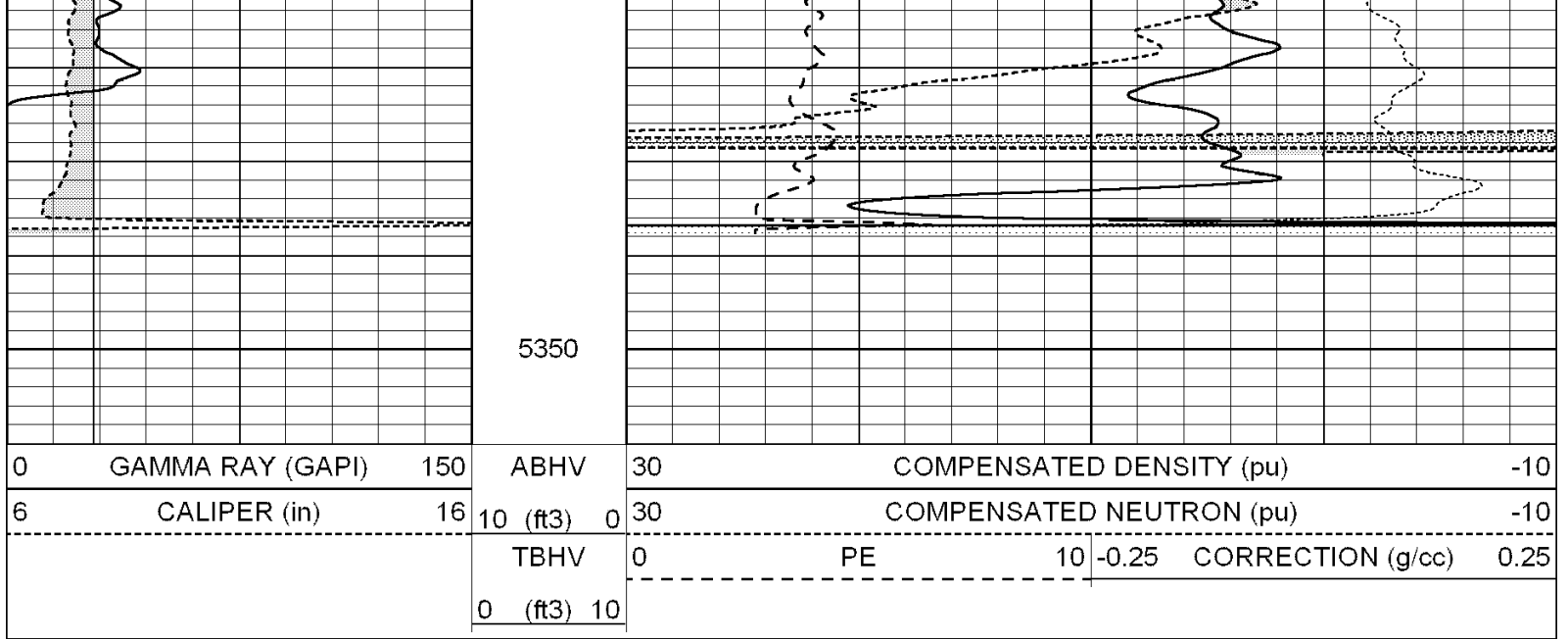
REPEAT SECTION

Database File: 004371.pe.db
 Dataset Pathname: pass2.11
 Presentation Format: ldt_neu
 Dataset Creation: Sat Nov 14 14:56:20 2009 by Calc Open-Cased 060407
 Charted by: Depth in Feet scaled 1:240

0	GAMMA RAY (GAPI)	150	ABHV	30	COMPENSATED DENSITY (pu)	-10
6	CALIPER (in)	16	10 (ft3) 0	30	COMPENSATED NEUTRON (pu)	-10
			TBHV	0	PE	10 -0.25 CORRECTION (g/cc) 0.25
			0 (ft3) 10			







Calibration Report

Database File: 004371pe.db
 Dataset Pathname: pass3.7
 Dataset Creation: Sat Nov 14 14:57:50 2009 by Calc Open-Cased 060407

Dual Induction Calibration Report

Serial-Model: DIL6-GEAR
 Performed: Sat Nov 14 13:57:50 2009

Loop:	Readings				References		Results	
	Air	Loop			Air	Loop	m	b
Deep	0.001	0.644	V	0.000	400.000	mmho-m	660.000	0.000
Medium	0.020	0.738	V	0.000	462.500	mmho-m	740.000	-23.000
Internal:	Zero	Cal		Zero	Cal		m	b
Deep	0.000	1.000	V	0.000	1.000	mmho-m	1.000	0.000
Medium	0.000	1.000	V	0.000	1.000	mmho-m	1.000	0.000

Litho Density Calibration Report

Serial: 004N Model: PRB
 Performed Tue Sep 08 13:49:55 2009

Litho Density Calibration

	Background	Magnesium	Aluminum	Sandstone	
Window 1	1535.8	11161.3	3721.6	12498.8	cps
Window 2	1402.6	9435.7	3219.7	10417.7	cps
Window 3	1077.6	4422.0	1779.2	4753.4	cps
Window 4	337.3	342.8	337.4	343.7	cps
Long Space	0.0	8033.1	1817.0	9015.1	cps
Short Space	1.2	1671.8	1138.1	1813.0	cps
Rho		1.7100	2.5900	1.3800	g/cc
Pe			2.5700	1.5500	
Rib Angle	: 45.5	Rib Slope	: 1.017	Density/Spine Ratio	: 0.573
Spine Angle	: 75.5	Spine Slope	: 3.865	Spine Intercept	: -19.7

Caliper

Readings Reference

Low Ref
High Ref

1.1
3.0
Gain: 3.9

6.6
14.0

Offset: 2.4

Compensated Neutron Calibration Report

Serial Number: NEU_4I
Tool Model: G

CALIBRATION

Detector	Readings	Target	Normalization
Short Space	996.00 cps	1000.00 cps	1.0000
Long Space	977.00 cps	1000.00 cps	1.0000

Gamma Ray Calibration Report

Serial Number: GR4
Tool Model: OPEN
Performed: Sat Nov 14 13:57:30 2009

Calibrator Value: 200.0 GAPI

Background Reading: 0.0 cps
Calibrator Reading: 189.0 cps

Sensitivity: 0.7000 GAPI/cps