



**Borehole Compensated
Sonic Log**

DIGITAL LOG (785) 625-3858

API No. 15-083-21,610-00-00	Company American Warrior, Inc.	Other Services CNL / CDL MEL / DIL
Well Webster #1-24	Field Hanston-Oppy East	
County Hodgeman	State Kansas	
Location 140' FNL & 1598' FEL		
Sec: 24 Twp: 22S Rge: 22W		
Permanent Datum Log Measured From Drilling Measured From	Ground Level Kelly Bushing Kelly Bushing	Elevation 2149 11 Ft. Above Perm. Datum K.B. 2160 D.F. G.L. 2149

Date	10/4/2009
Run Number	Two
Type Log	BHC Sonic
Depth Driller	4409
Depth Logger	4410
Bottom Logged Interval	4399
Top Logged Interval	1300
Type Fluid In Hole	Chemical
Salinity, PPM CL	6,300
Density	9.5
Level	Full
Max. Rec. Temp. F	120
Operating Rig Time	5 1/2 Hours
Equipment -- Location	4 Hays
Recorded By	T. Martin
Witnessed By	Jason Alm

Run No	Bit	Borehole Record		Casing Record	
		From	To	From	To
1	12.25	00	1315	8.625	24#
2	7.875	1315	4409		

<<< Fold Here >>>

All interpretations are opinions based on inferences from electrical or other measurements and we cannot and do not guarantee the accuracy or correctness of any interpretation, and we shall not, except in the case of gross or willful negligence on our part, be liable or responsible for any loss, costs, damages, or expenses incurred or sustained by anyone resulting from any interpretation made by any of our officers, agents or employees. These interpretations are also subject to our general terms and conditions set out in our current Price Schedule.

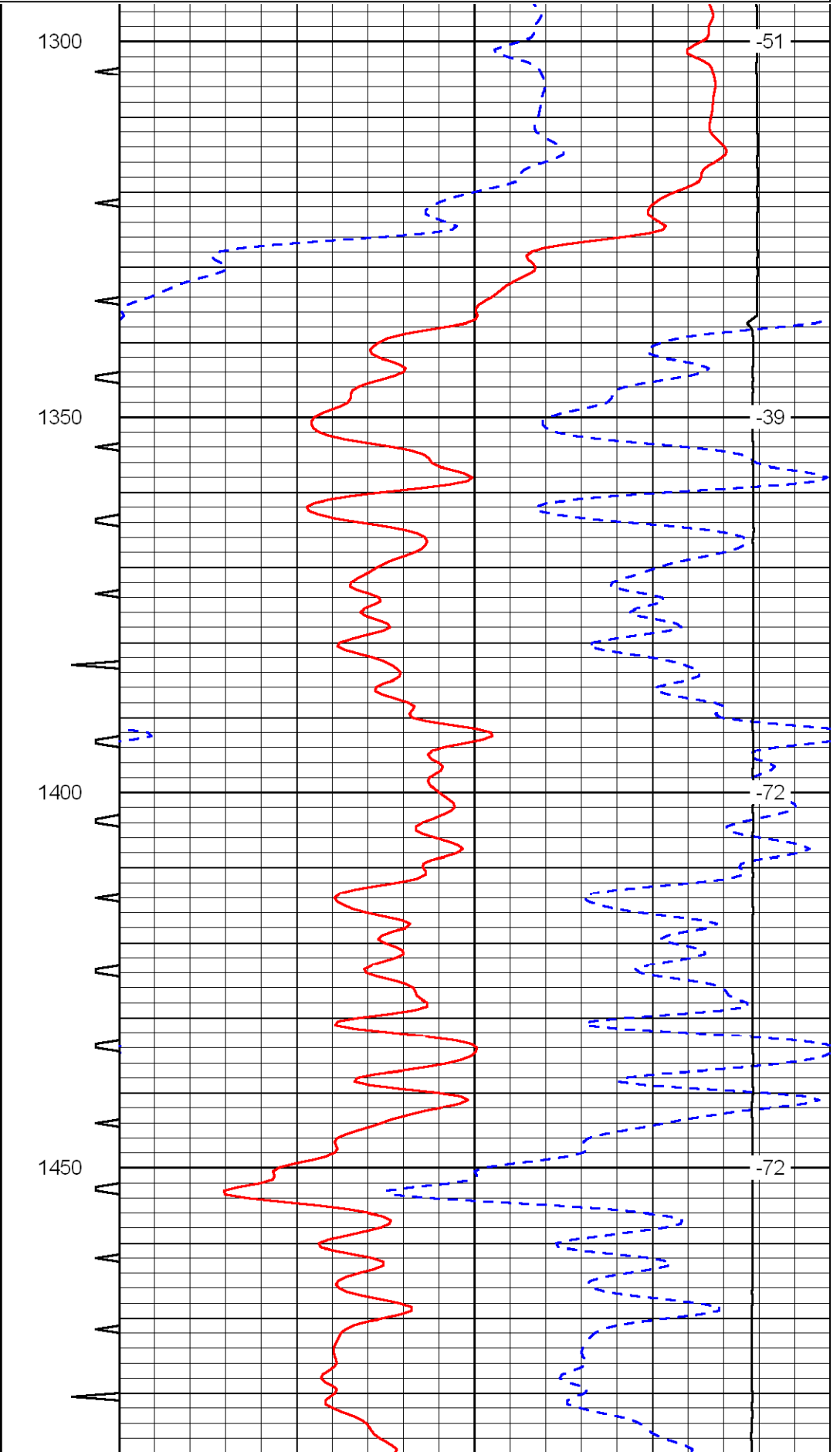
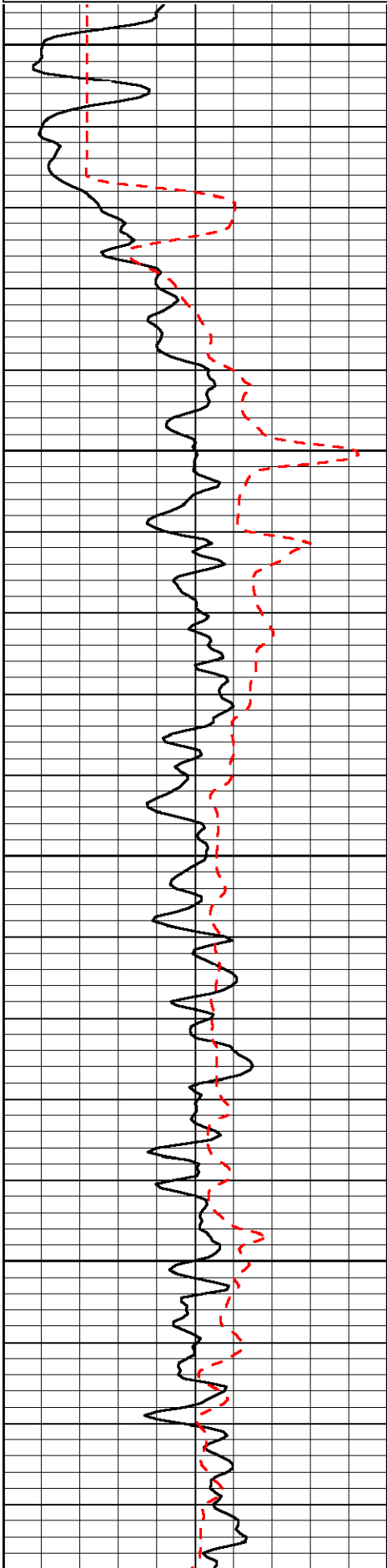
Comments

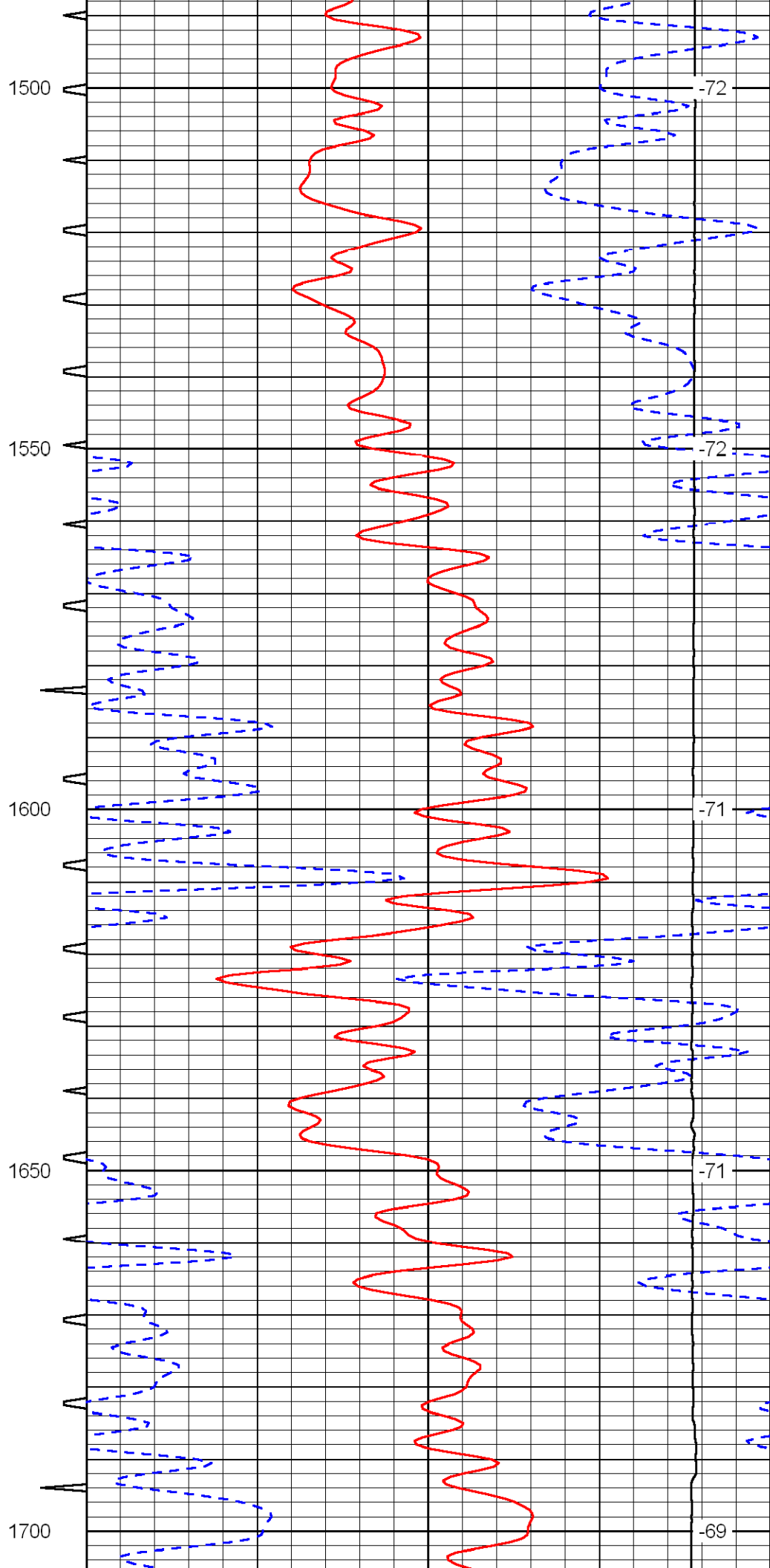
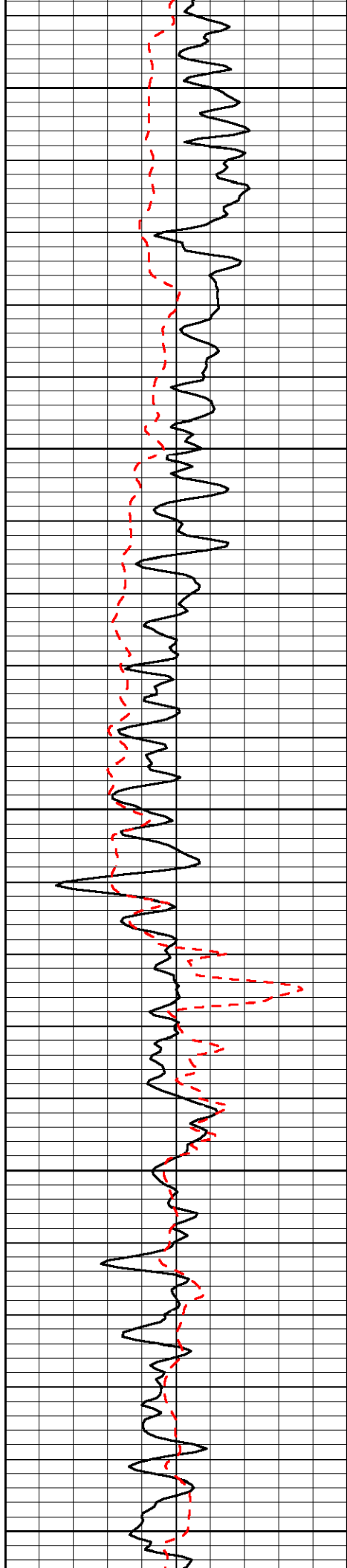
Thank you for using Log-Tech, Inc.
(785) 625-3858

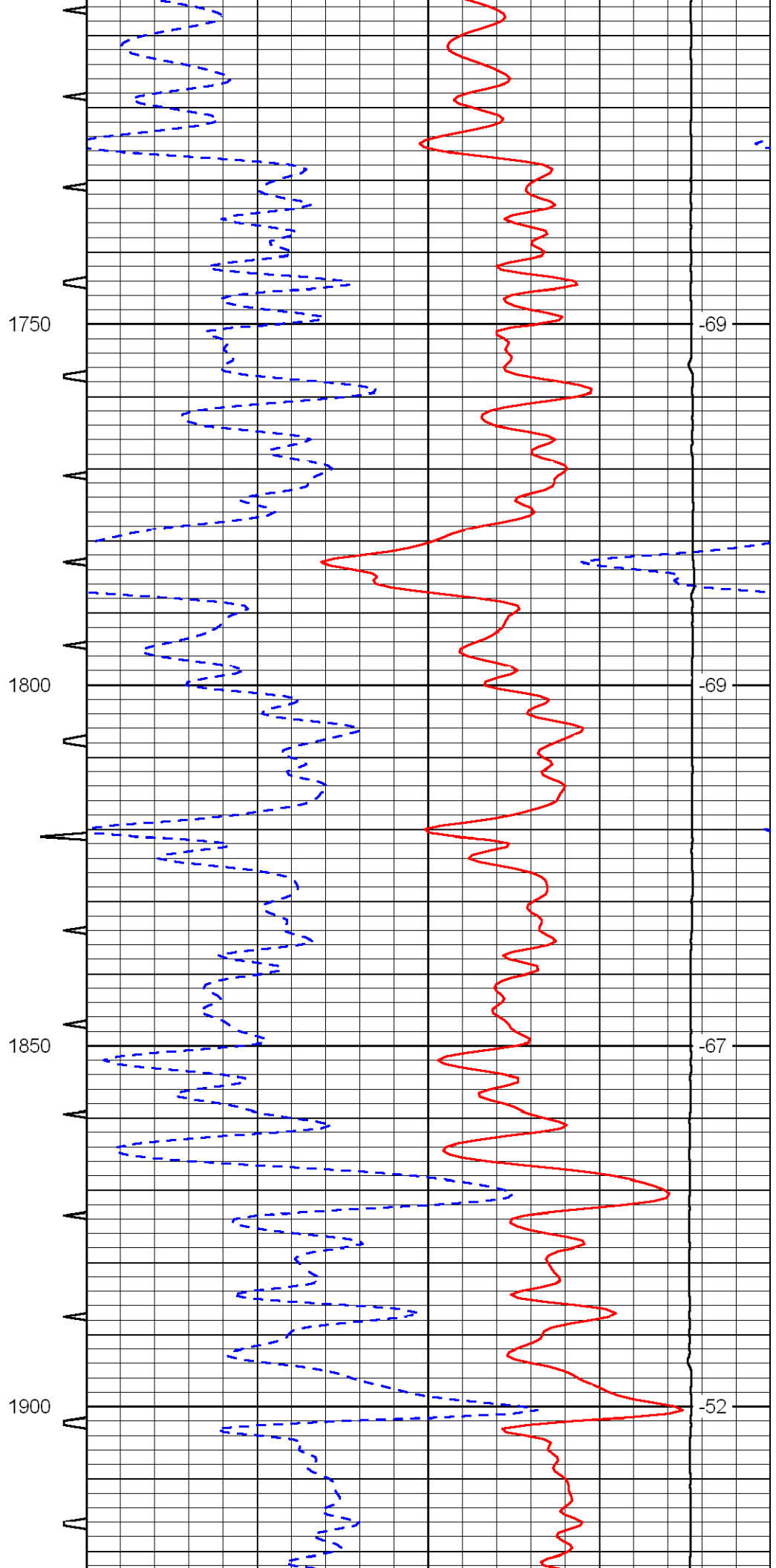
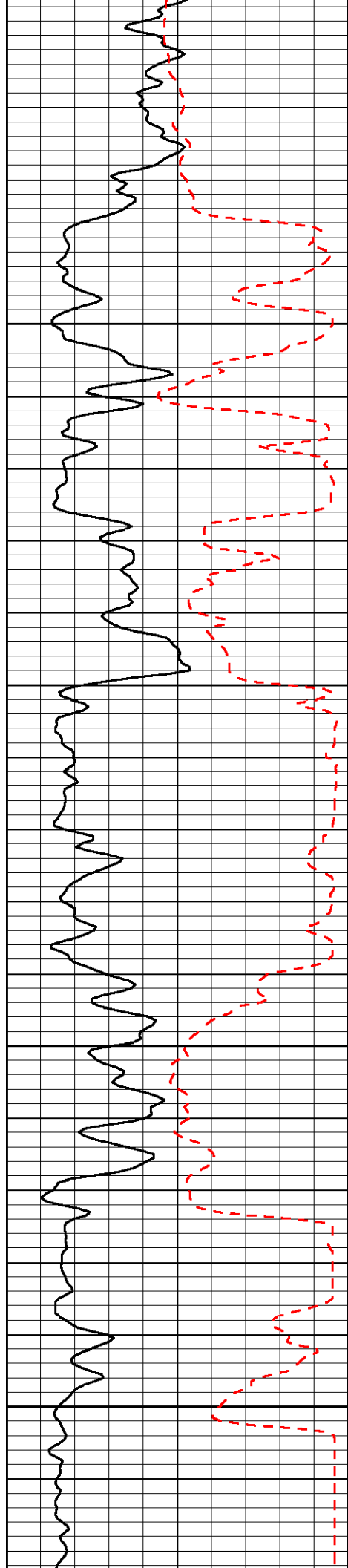
Hanston 2 E to 230 Rd, 1 S to stop sign, N into

Database File: c:\warrior\data\amwar_webster #1-24\awhd.db
 Dataset Pathname: dil\awstc
 Presentation Format: sonic
 Dataset Creation: Sun Oct 04 19:52:20 2009
 Charted by: Depth in Feet scaled 1:240

0	Gamma Ray	150	Sonic Int	140	Delta Time (usec/ft) (usec/ft)	40
150	Gamma Ray	300	5 (msec)	0	SPOR (pu)	-10
6	Caliper (in)	16		10000	LTEN (lb) (lb)	0
						LSPD (ft/min)







1750

1800

1850

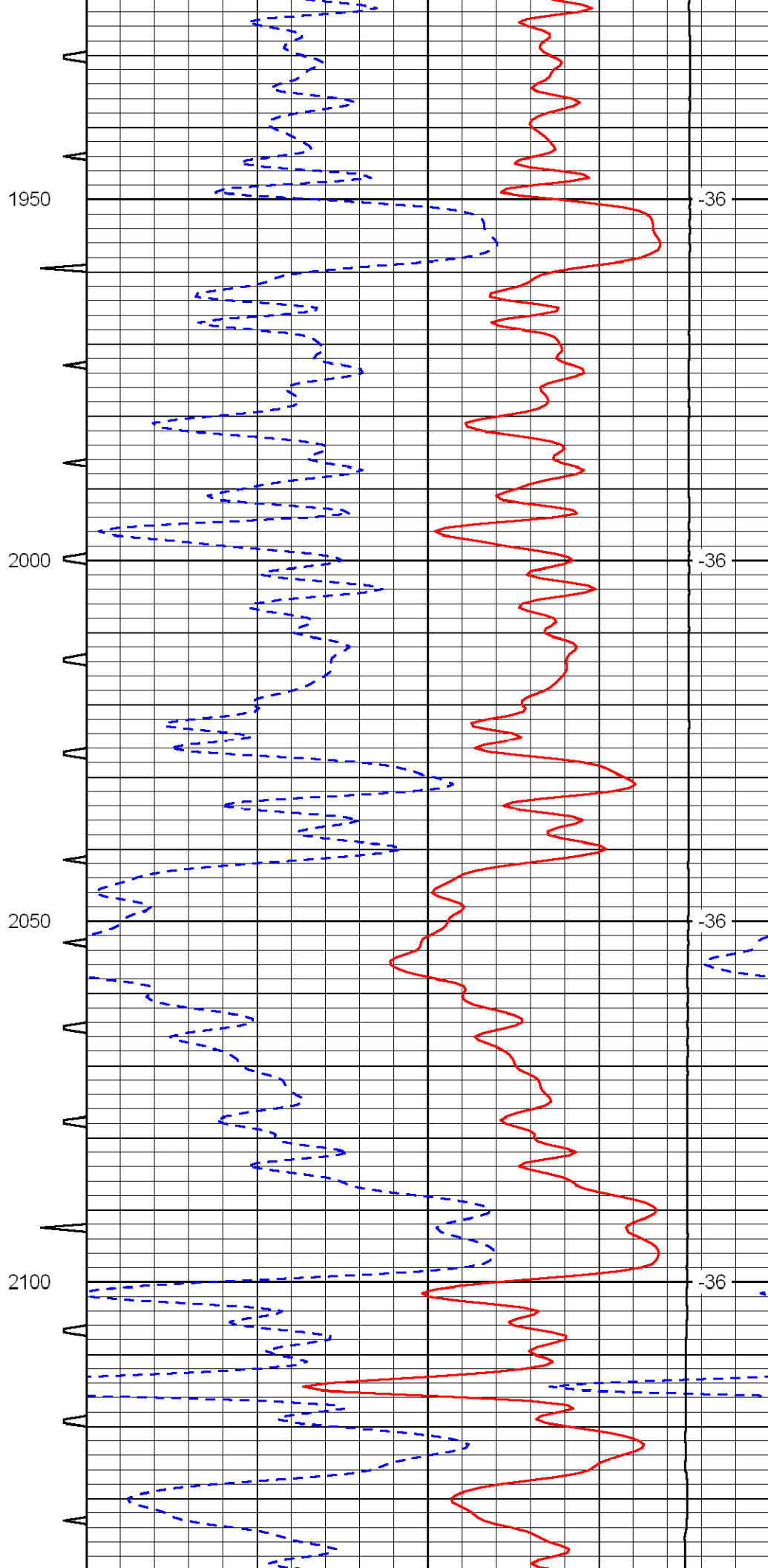
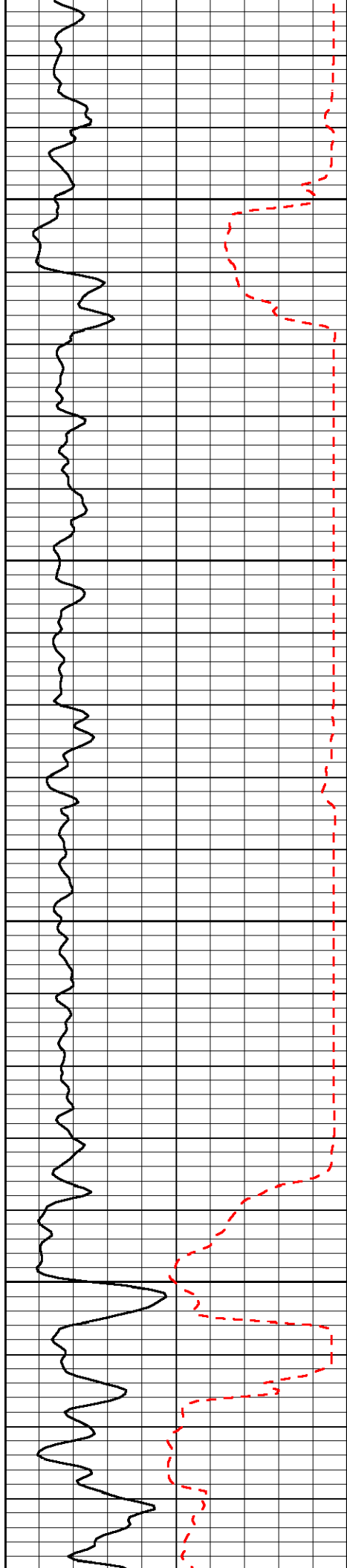
1900

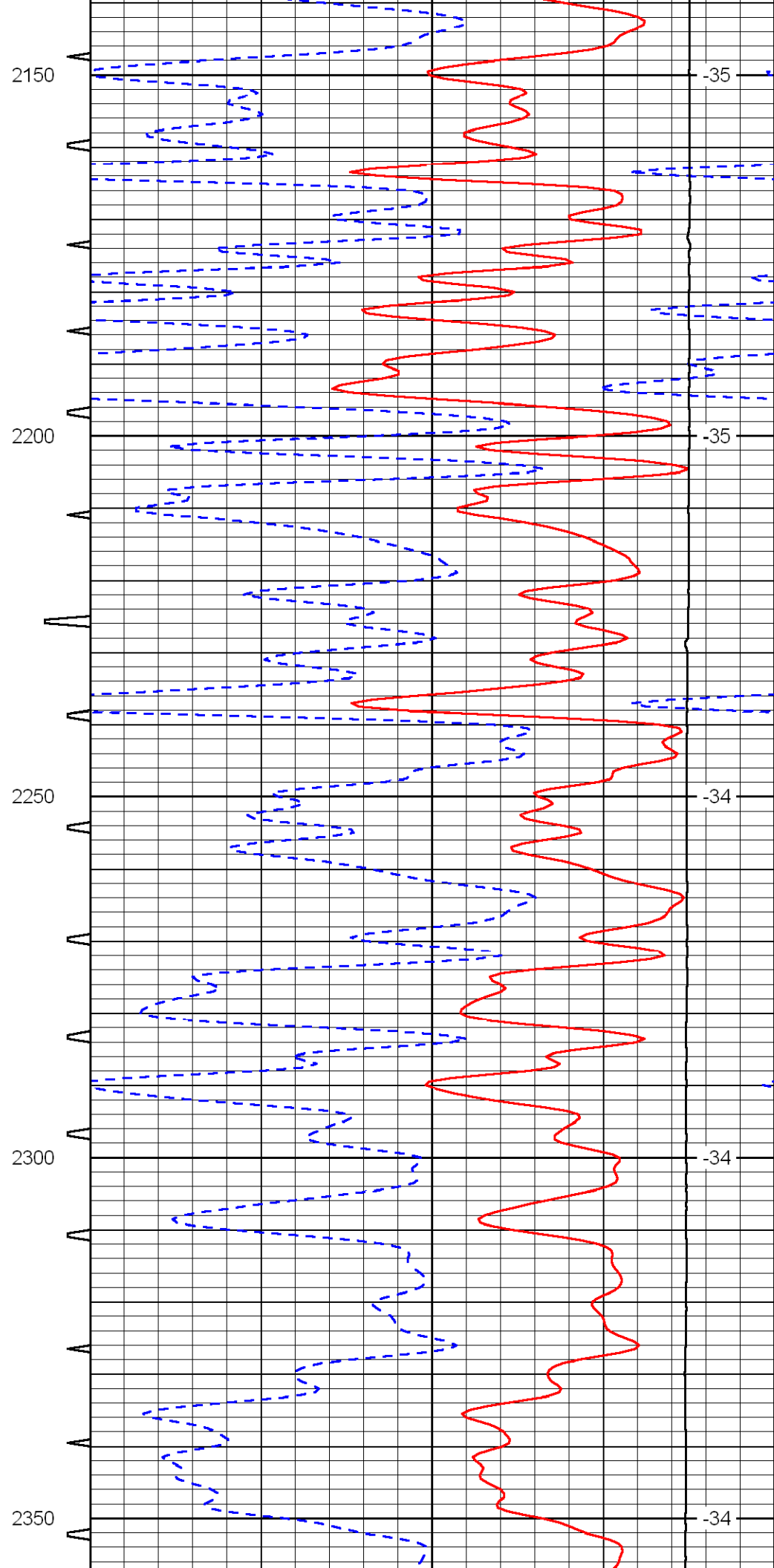
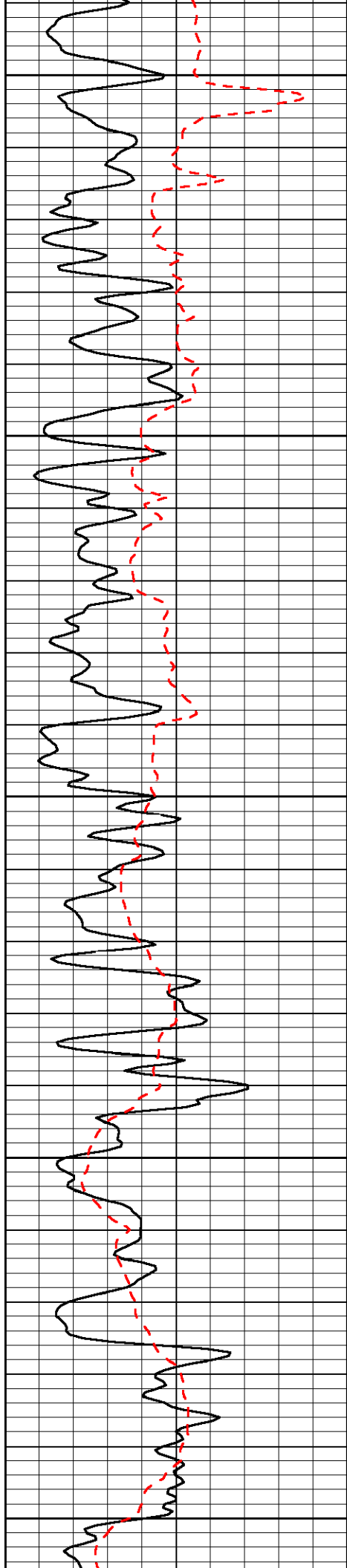
-69

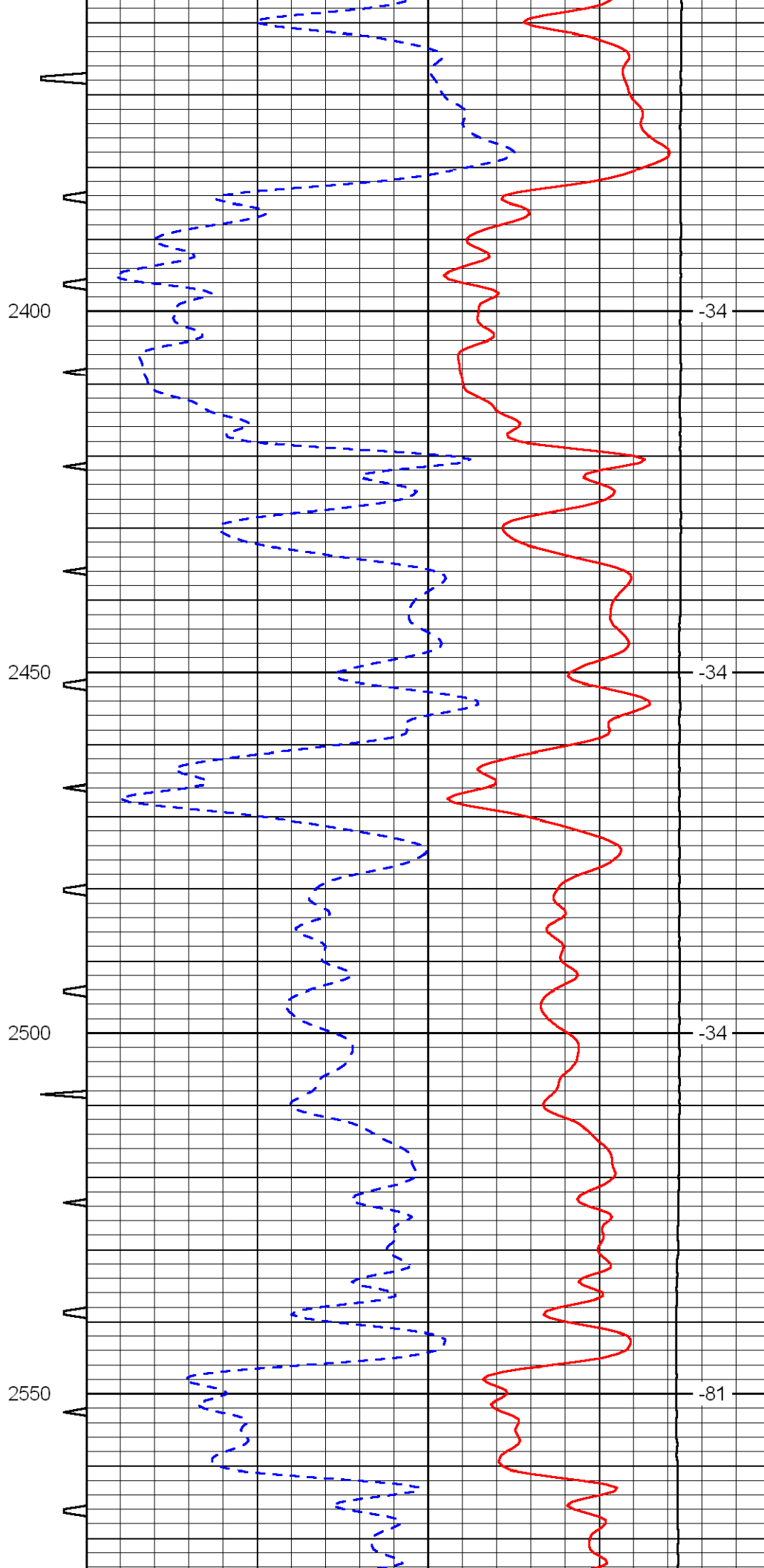
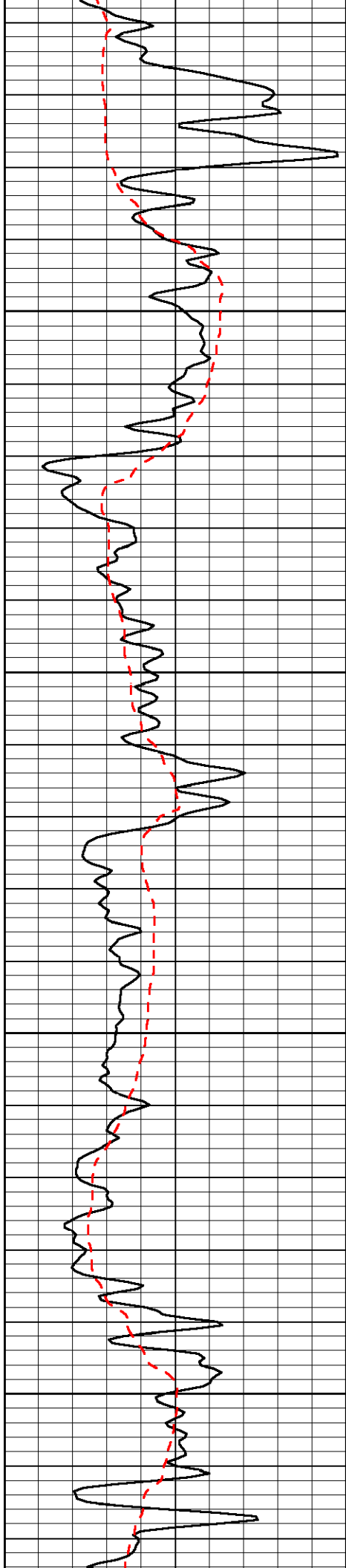
-69

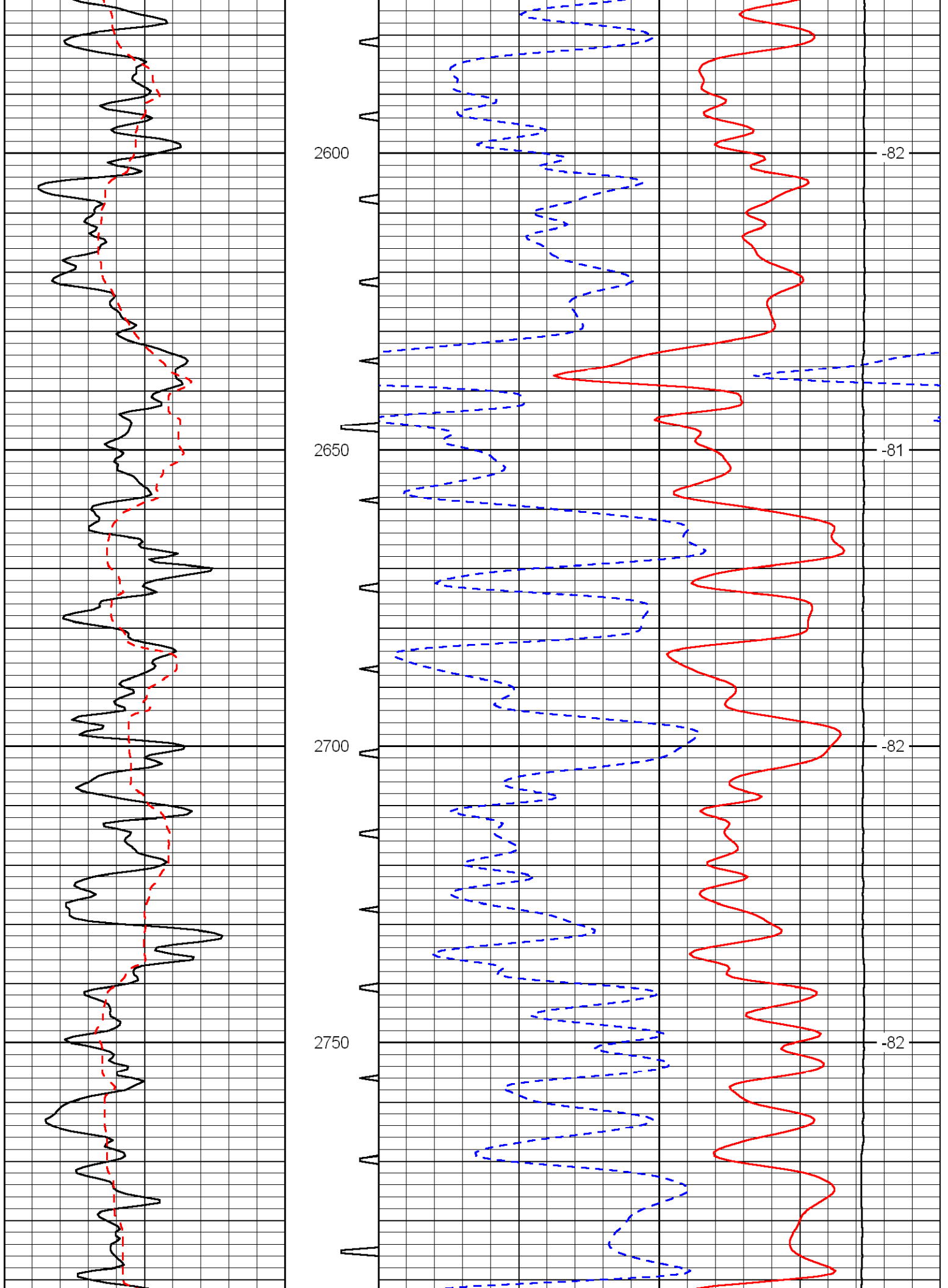
-67

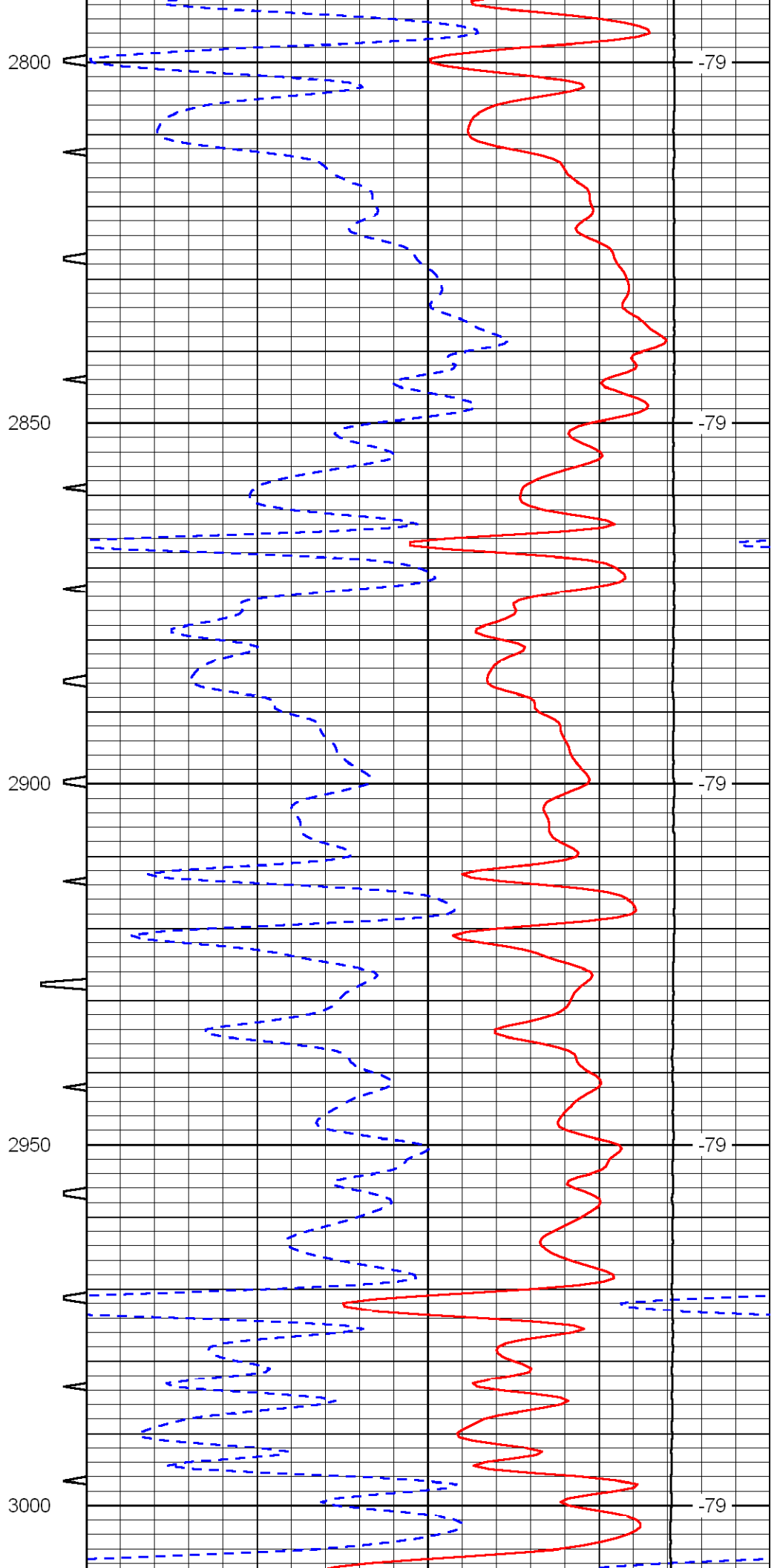
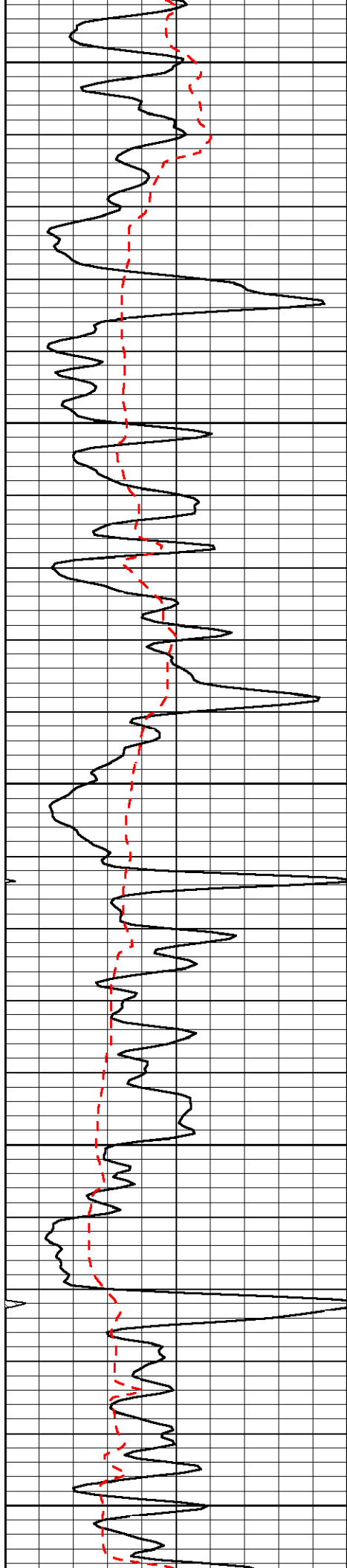
-52

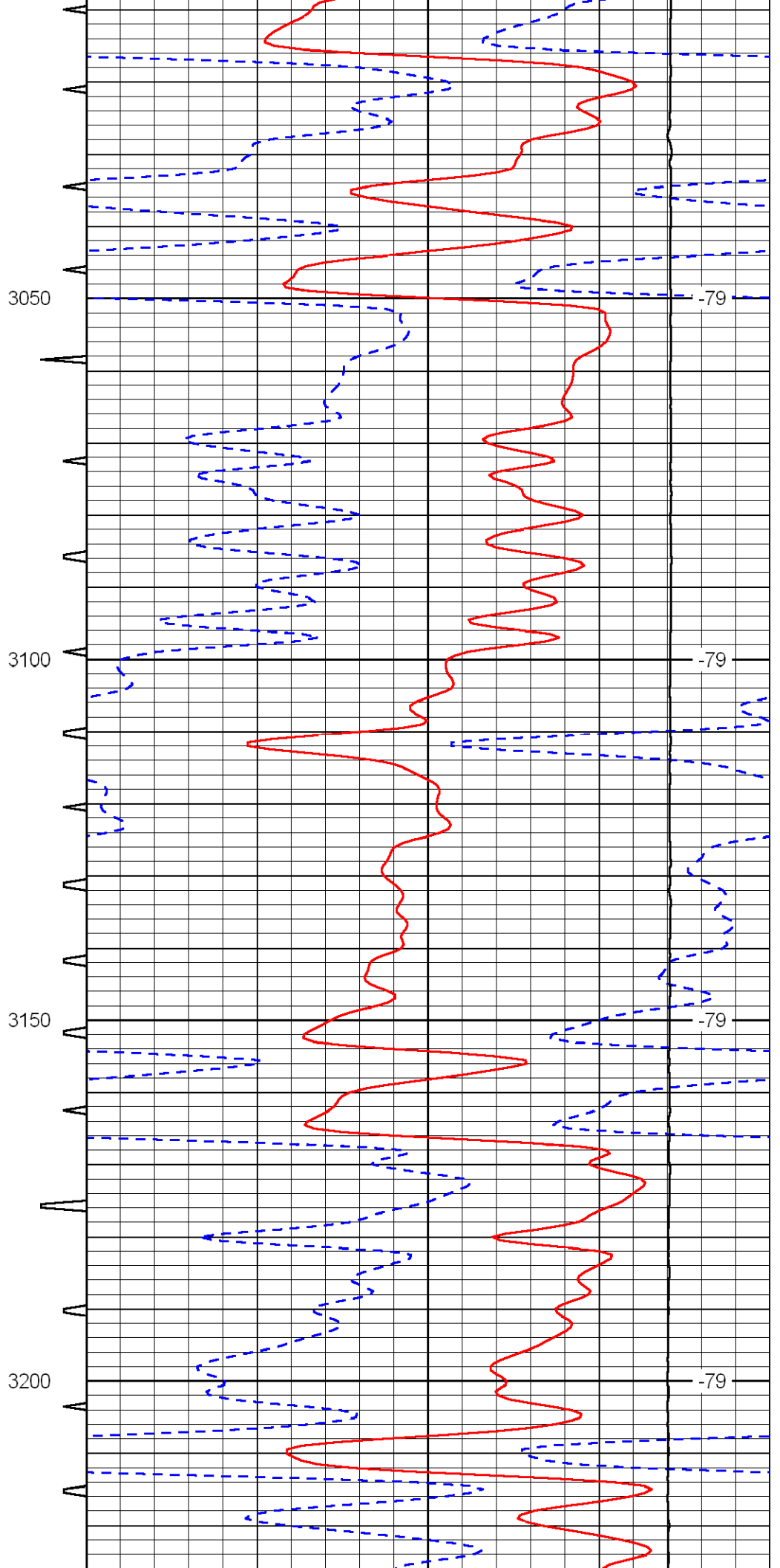
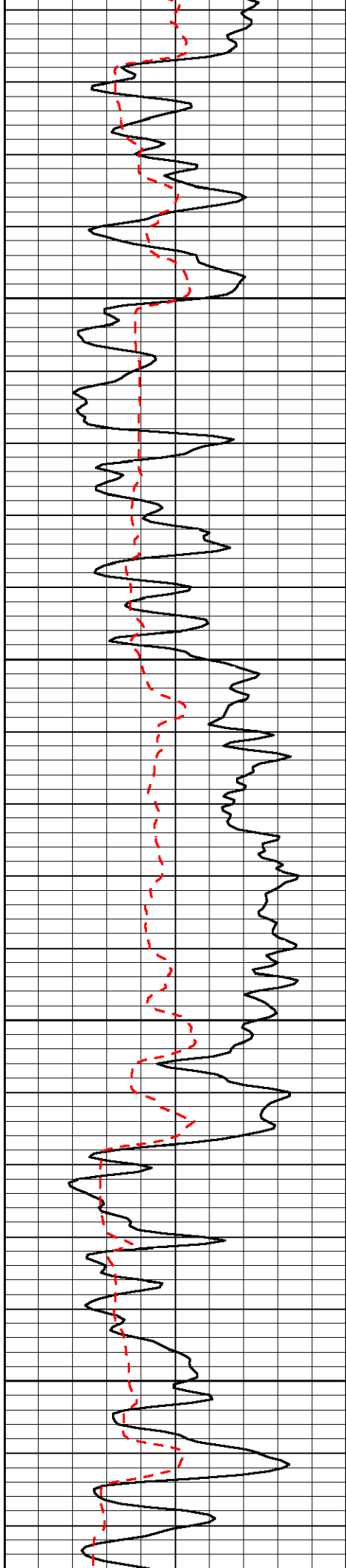


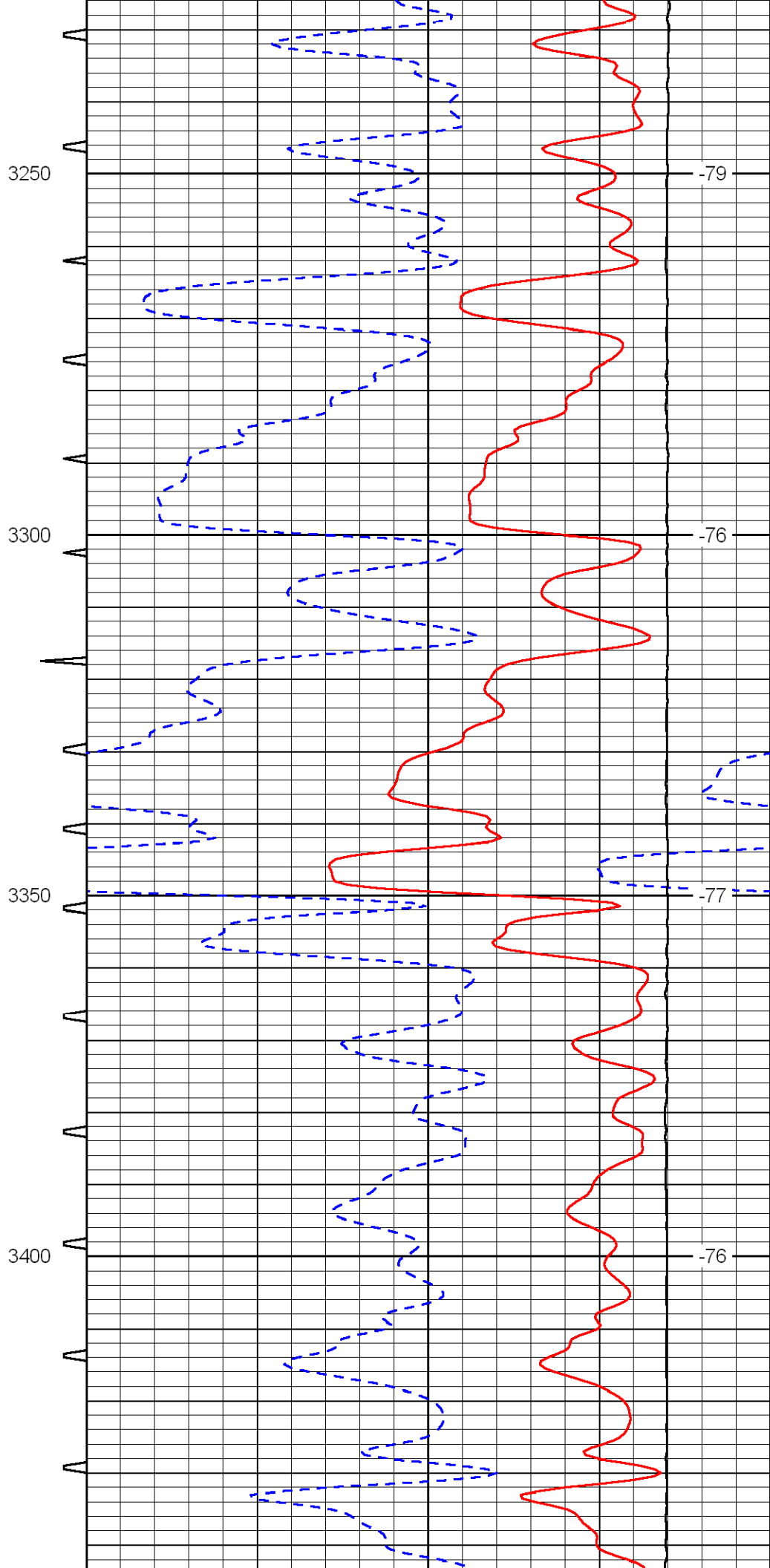
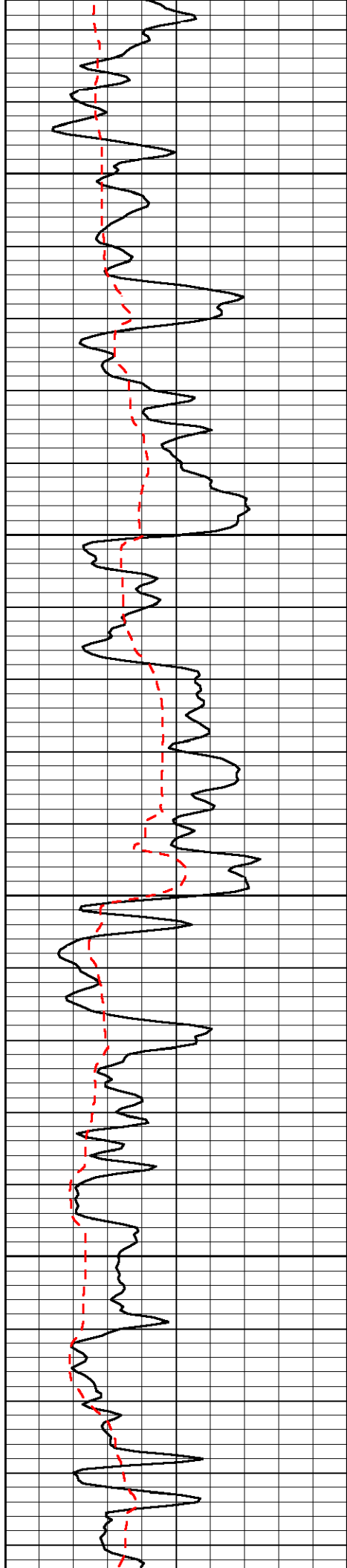


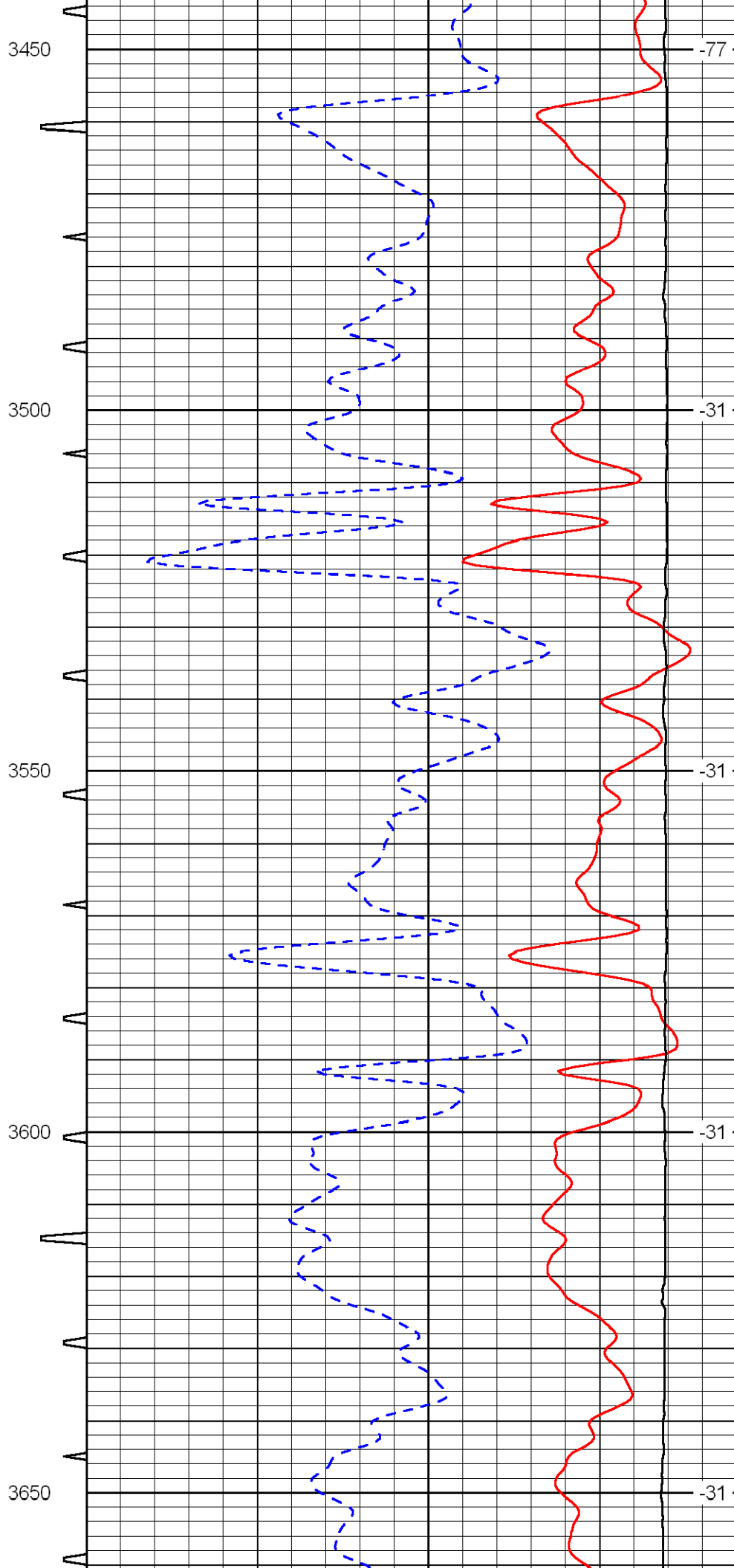
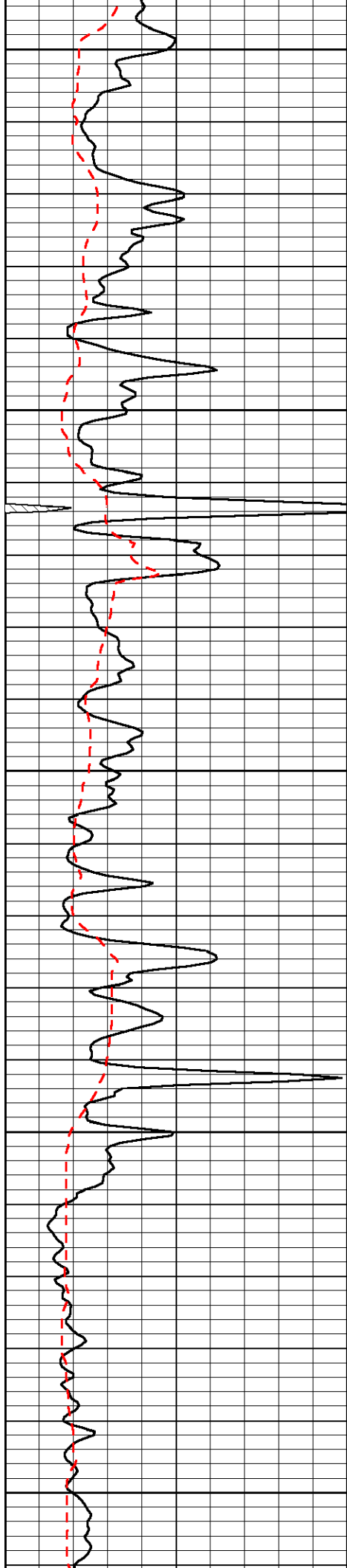


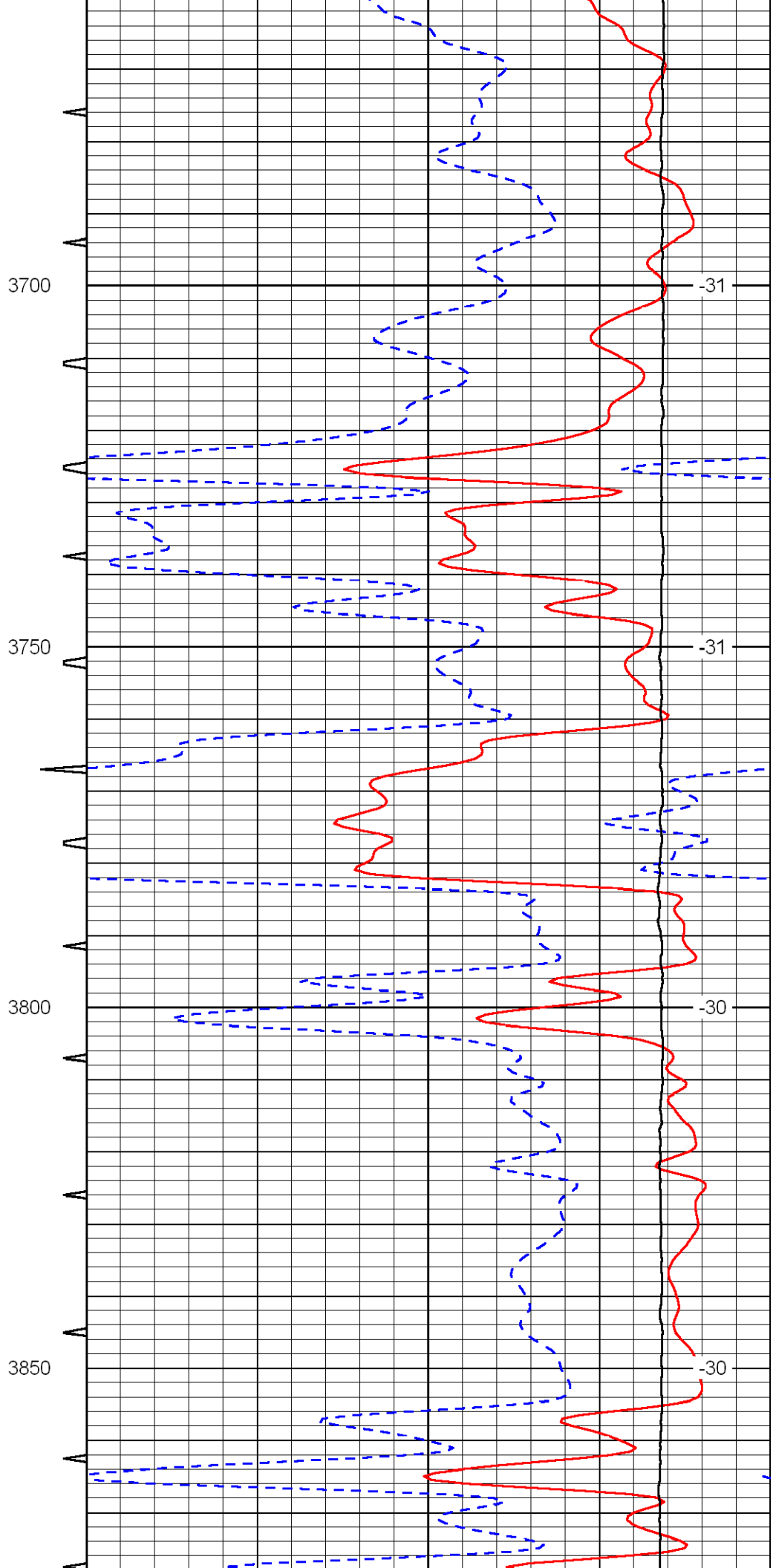
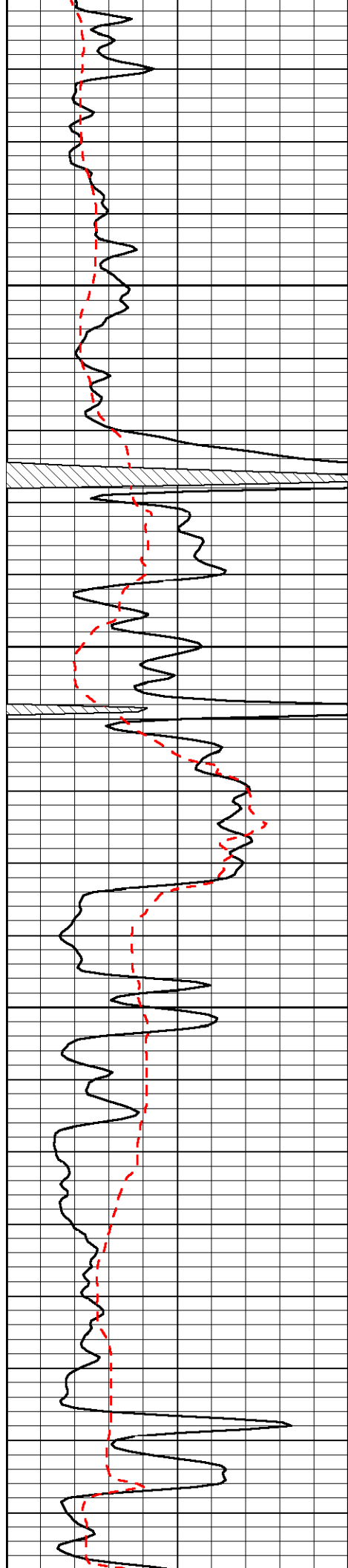


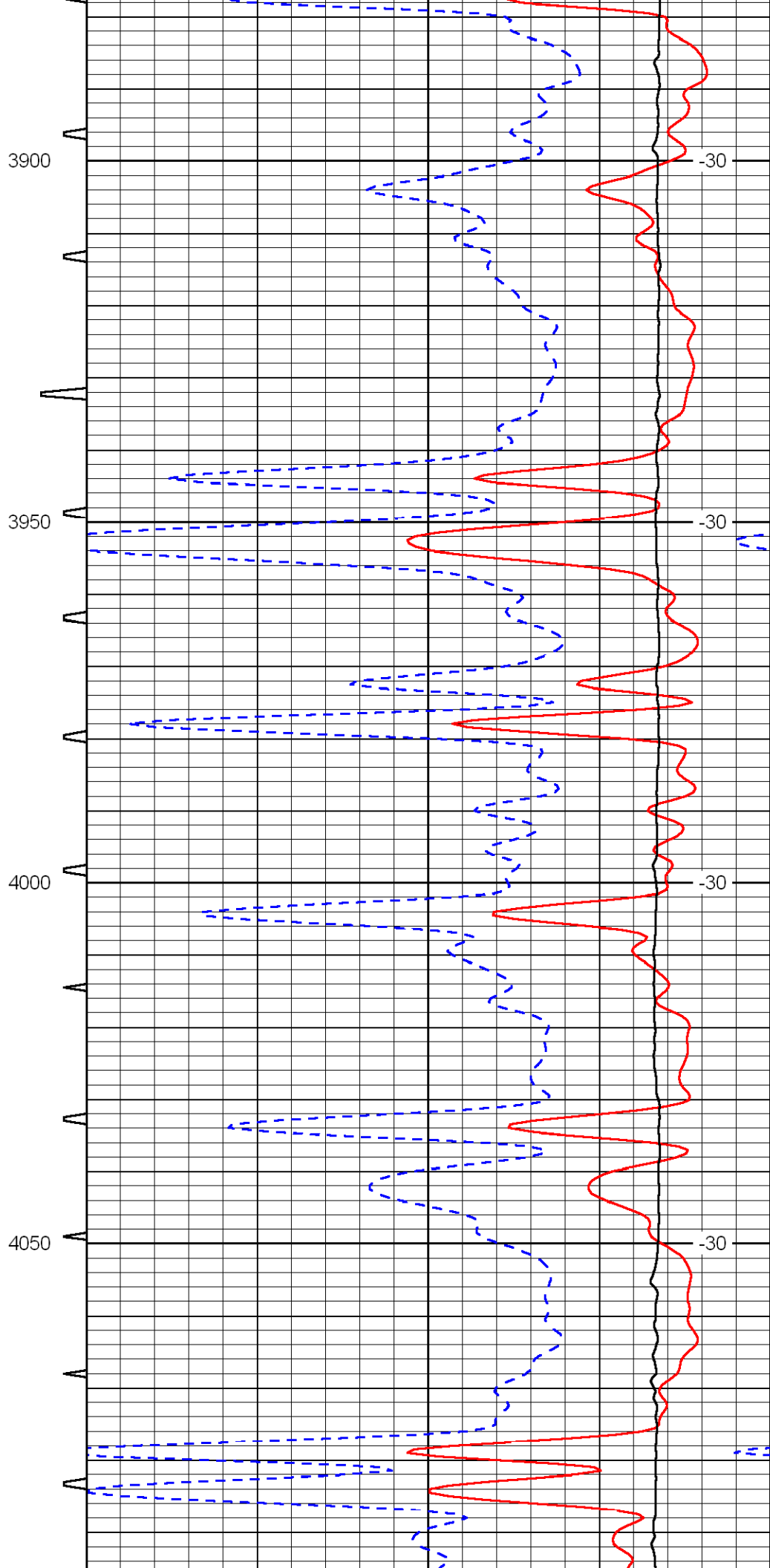
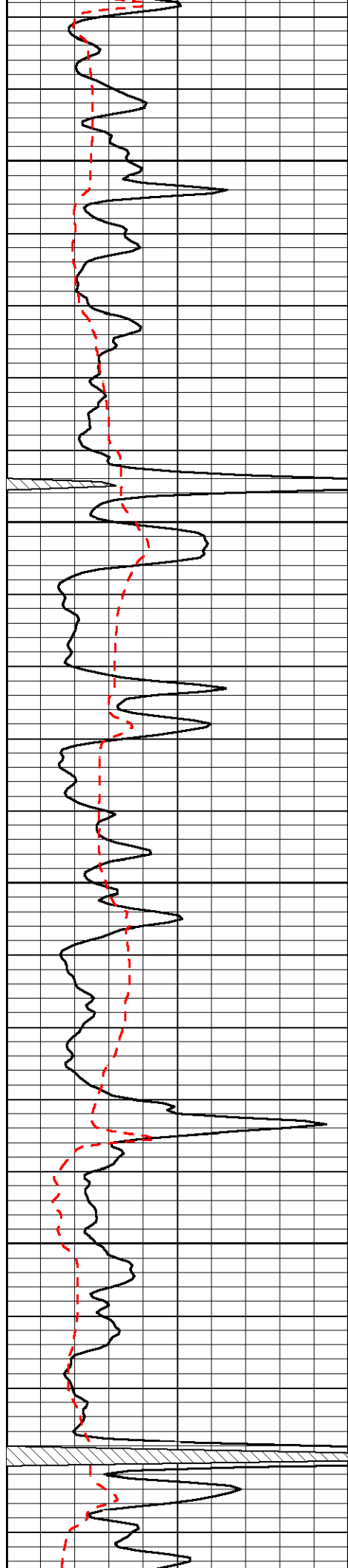


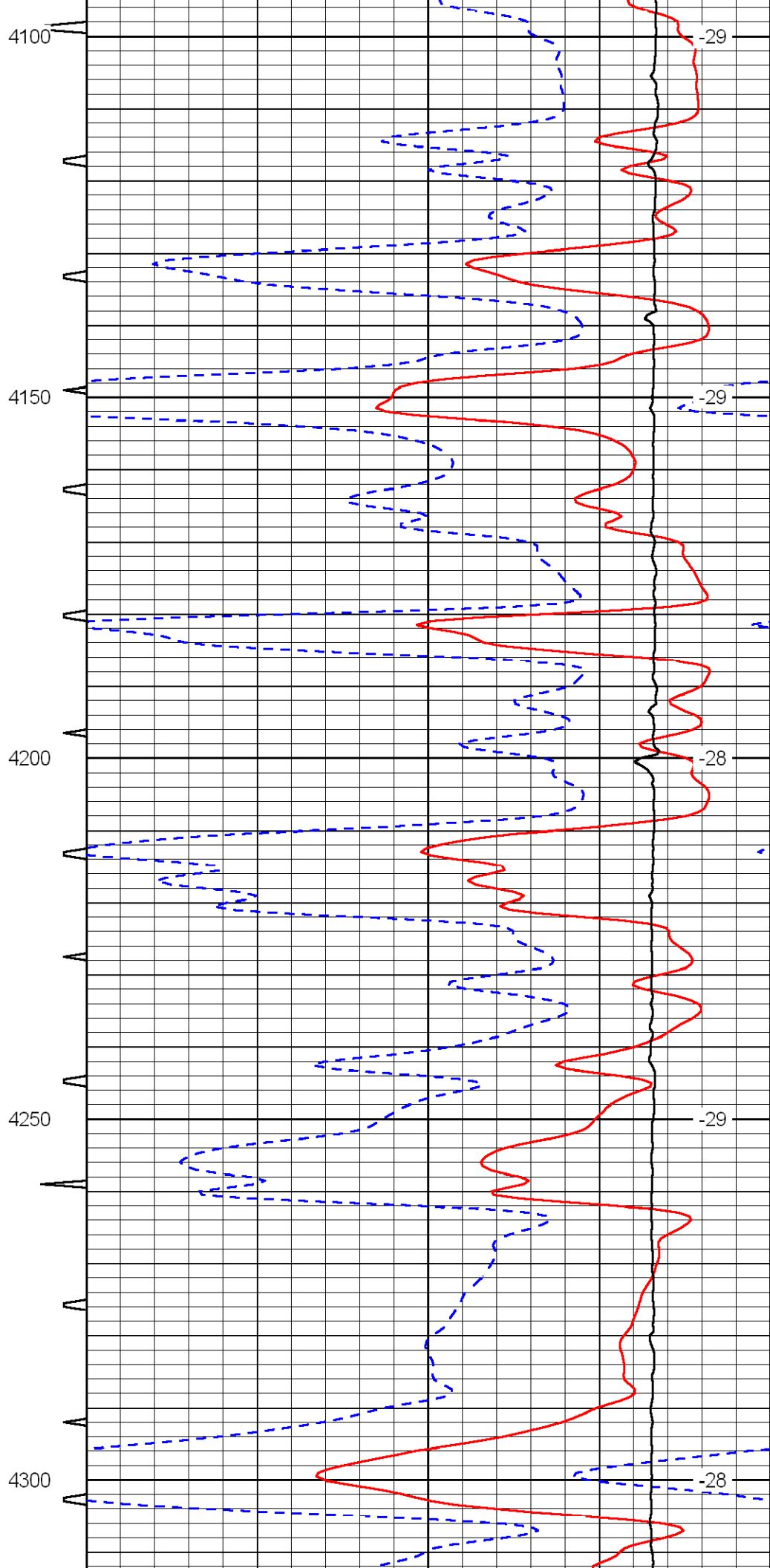
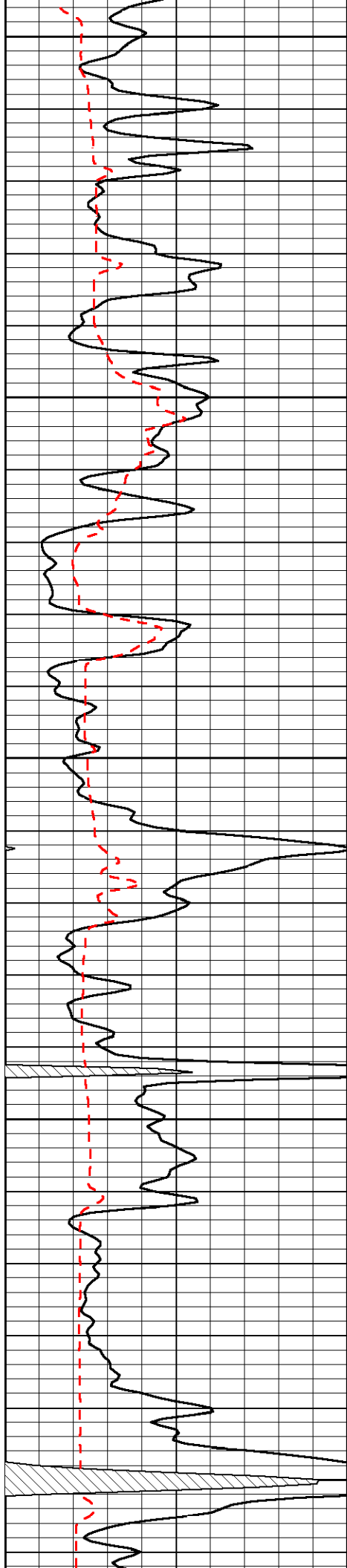


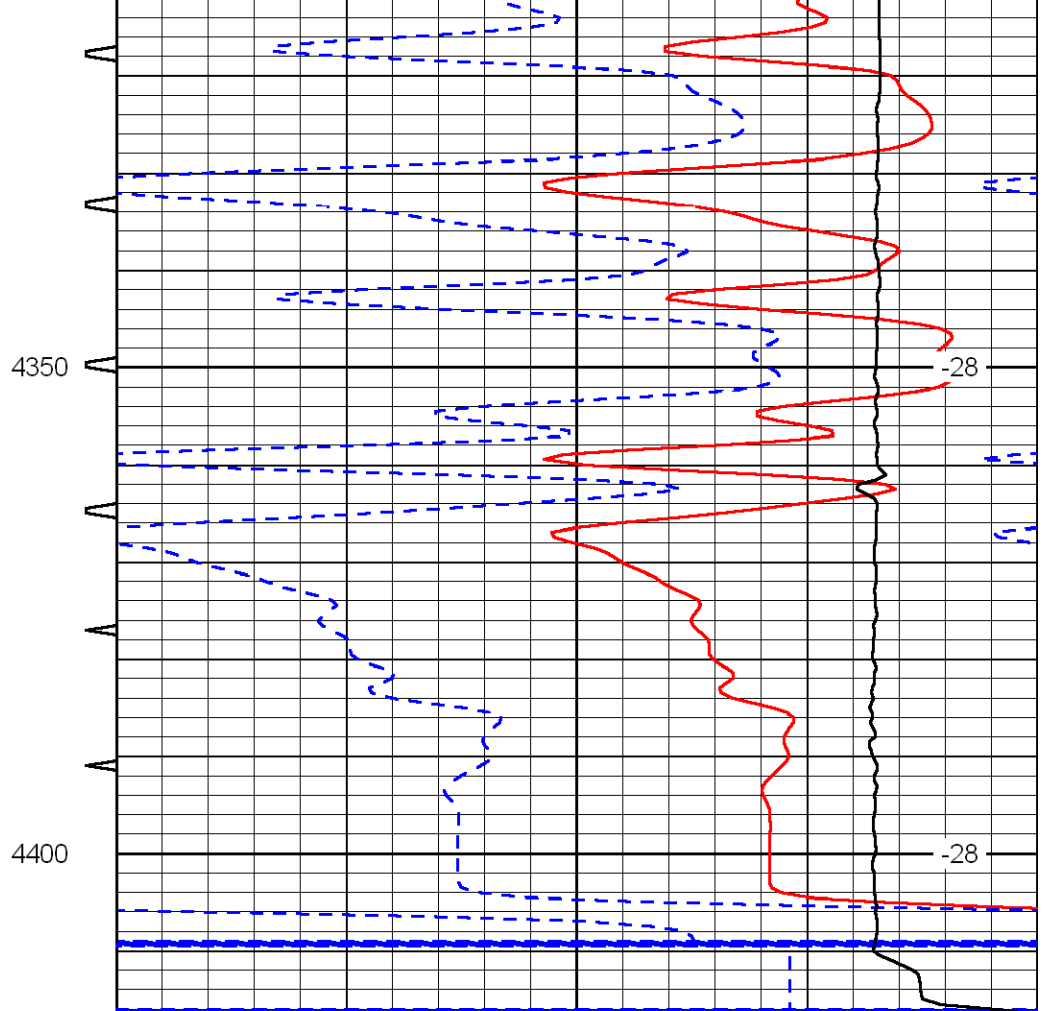
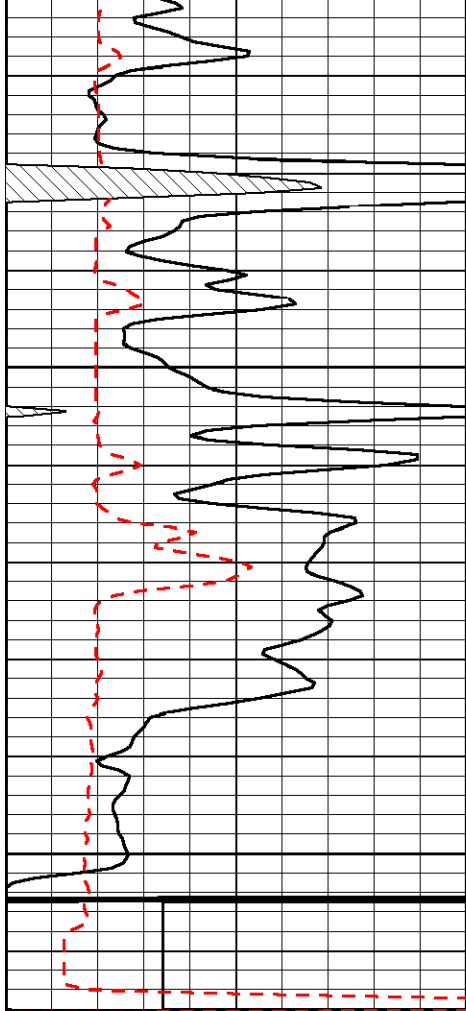












0	Gamma Ray	150	Sonic Int	140	Delta Time (usec/ft) (usec/ft)	40
150	Gamma Ray	300	5 (msec) 0	30	SPOR (pu)	-10
6	Caliper (in)	16		10000	LTEN (lb) (lb)	0
						LSPD (ft/min)