



Microresistivity Log

DIGITAL LOG (785) 625-3858

API No.	15-083-21,610-00-00		
Company	American Warrior, Inc.		
Well	Webster #1-24		
Field	Hanston-Oppy East		
County	Hodgeman	State	Kansas
Location	140' FNL & 1598' FEL		
Sec: 24	Twp: 22S	Rge: 22W	
Permanent Datum	Ground Level	Elevation	2149
Log Measured From	Kelly Bushing	11 Ft. Above Perm. Datum	
Drilling Measured From	Kelly Bushing		
		Other Services	CNL / CDL DIL / BHCS
		Elevation	K.B. 2160 D.F. 2149 G.L. 2149

Date	10/4/2009	
Run Number	Two	
Depth Driller	4409	
Depth Logger	4410	
Bottom Logged Interval	4409	
Top Log Interval	2000	
Casing Driller	8.625 @ 1315	
Casing Logger	1316	
Bit Size	7.875	
Type Fluid in Hole	Chemical	
Salinity, ppm CL	6.300	
Density / Viscosity	9.5	61
pH / Fluid Loss	10.5	10.4
Source of Sample	Flowline	
Rm @ Meas. Temp	.4	@ 68
Rmf @ Meas. Temp	.3	@ 68
Rmc @ Meas. Temp	.54	@ 68
Source of Rmf / Rmc	Charts	
Rm @ BHT	.23	@ 120
Operating Rig Time	5 1/2 Hours	
Max Rec. Temp. F	120	
Equipment Number	4	
Location	Hays	
Recorded By	T. Martin	
Witnessed By	Jason Alm	

<<< Fold Here >>>

All interpretations are opinions based on inferences from electrical or other measurements and we cannot and do not guarantee the accuracy or correctness of any interpretation, and we shall not, except in the case of gross or willful negligence on our part, be liable or responsible for any loss, costs, damages, or expenses incurred or sustained by anyone resulting from any interpretation made by any of our officers, agents or employees. These interpretations are also subject to our general terms and conditions set out in our current Price Schedule.

Comments

Thank you for using Log-Tech, Inc.
(785) 625-3858

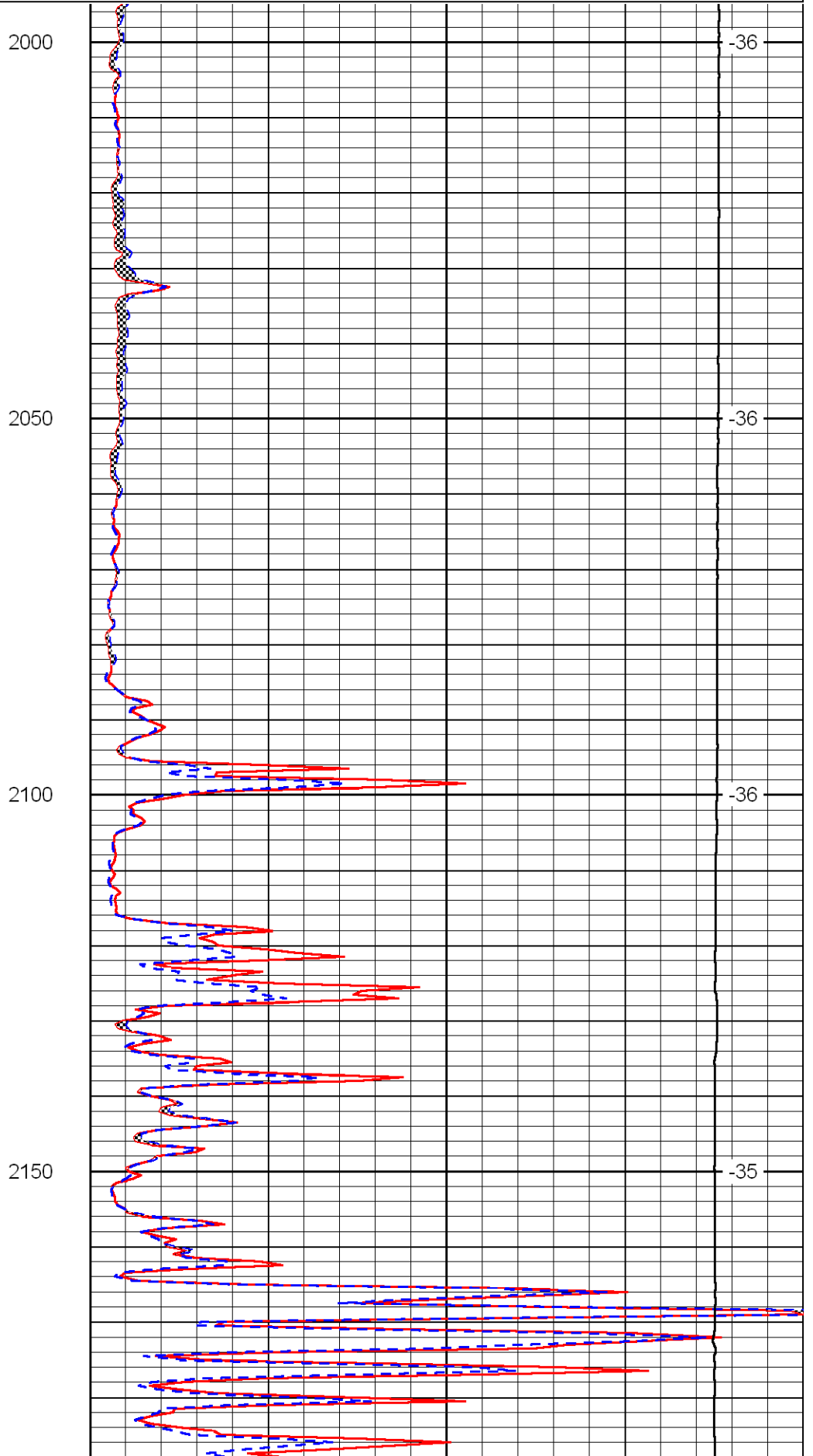
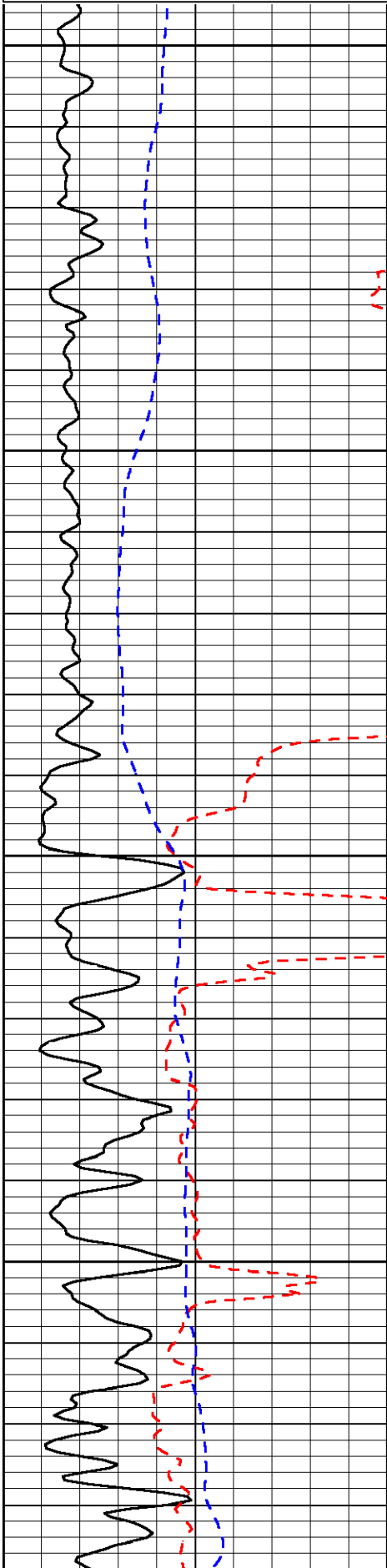
Hanston 2 E to 230 Rd, 1 S to stop sign, N into

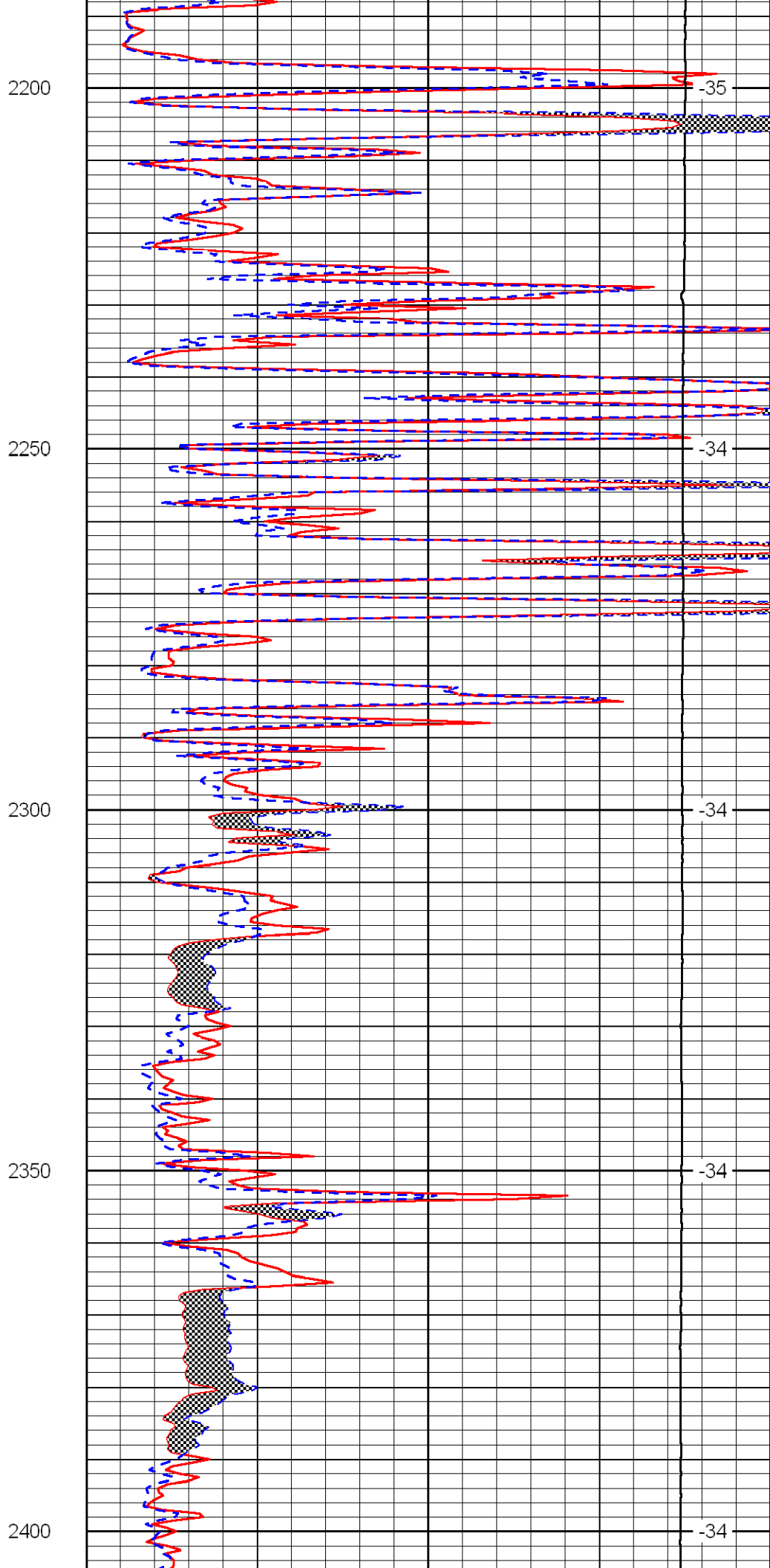
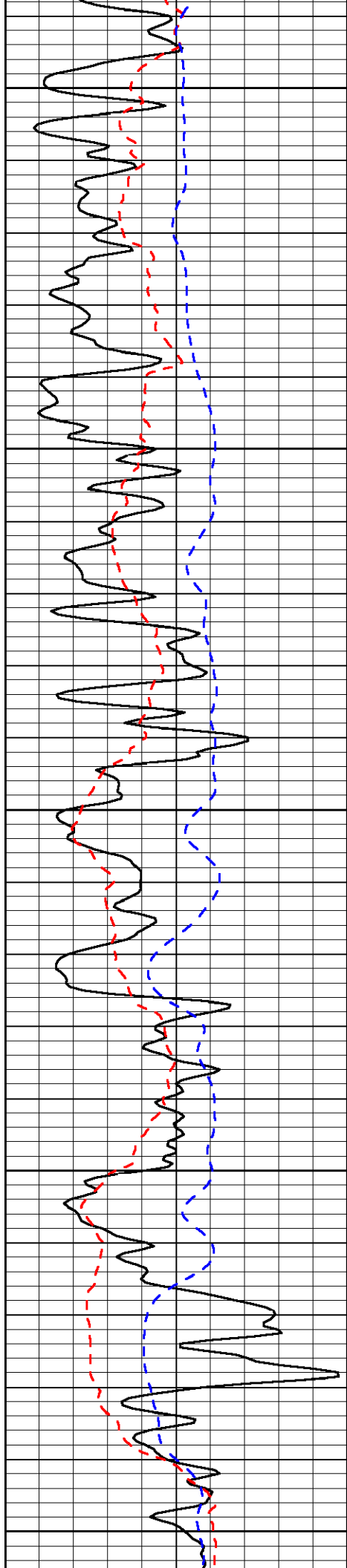
Database File: c:\warrior\data\amwar_webster #1-24\awhd.db
 Dataset Pathname: dil\awstc
 Presentation Format: micro
 Dataset Creation: Sun Oct 04 19:52:20 2009
 Charted by: Depth in Feet scaled 1:240

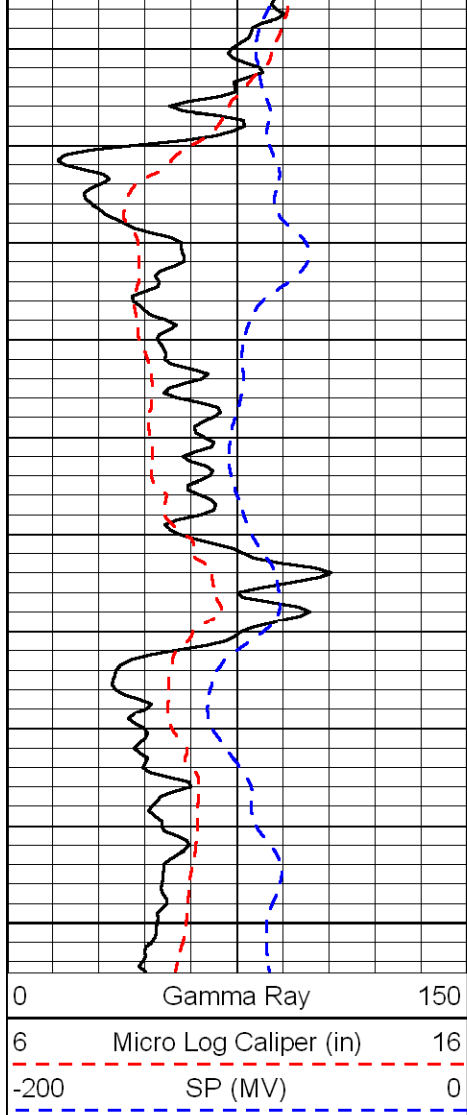
0	Gamma Ray	150
6	Micro Log Caliper (in)	16
-200	SP (MV)	0

0	Micro Inverse 1 X 1 (Ohm-m)	40
0	Micro Normal 2" (Ohm-m)	40
10000	Line Weight (lb)	0

LSPD
(ft/min)

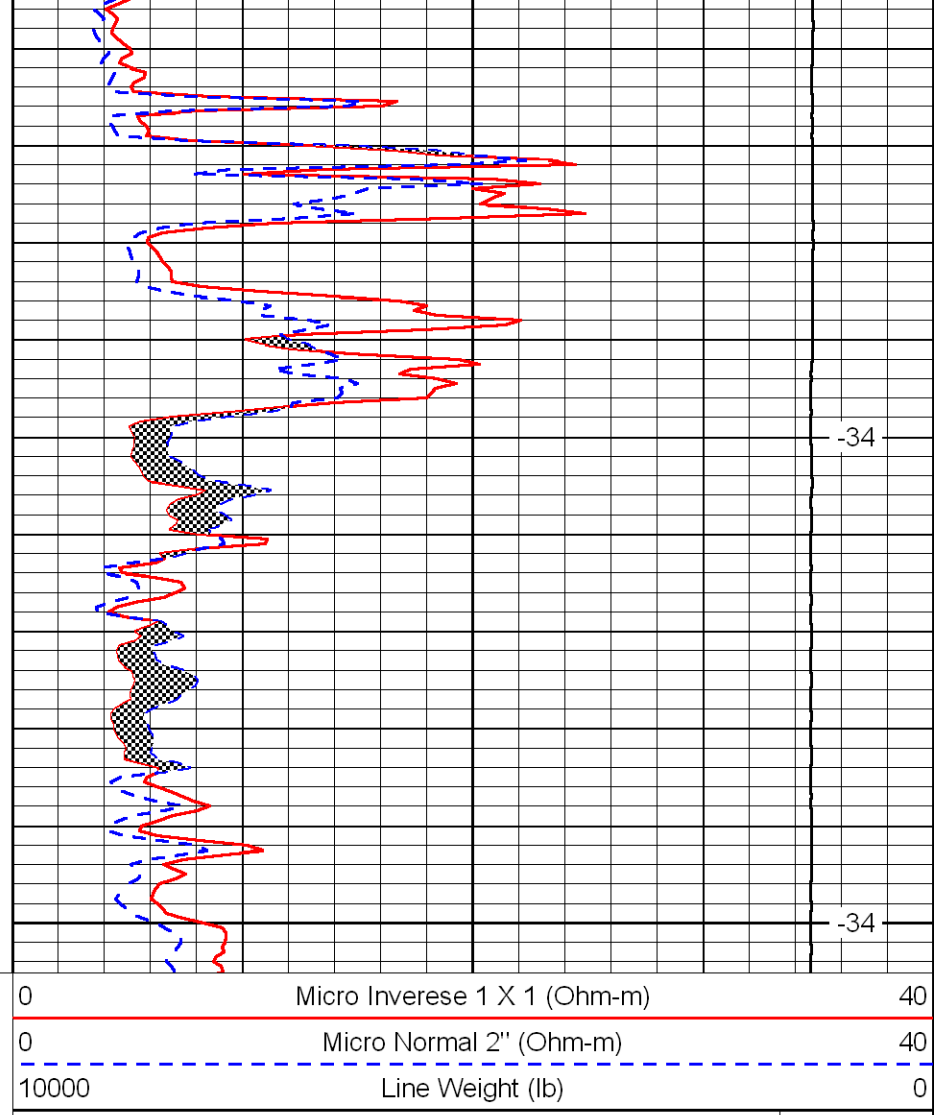






2450

2500

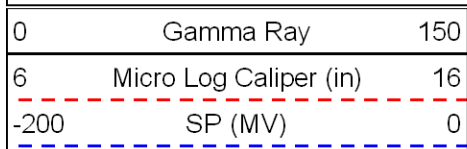


-34

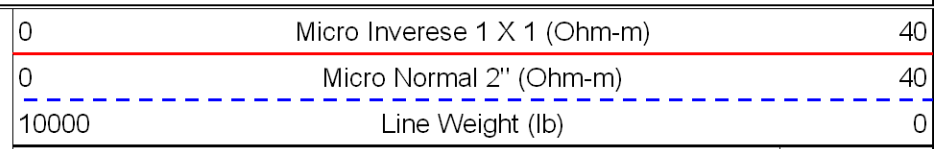
-34

LSPD
(ft/min)

Database File: c:\warrior\data\amwar_webster #1-24\awhd.db
 Dataset Pathname: dil/awstk
 Presentation Format: micro
 Dataset Creation: Sun Oct 04 19:52:20 2009
 Charted by: Depth in Feet scaled 1:240

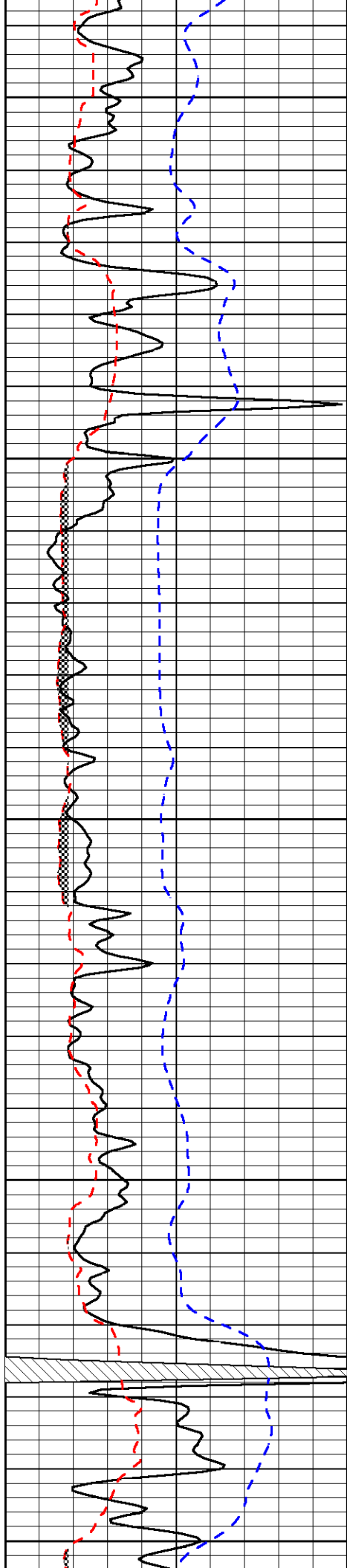


3500



LSPD
(ft/min)

-31



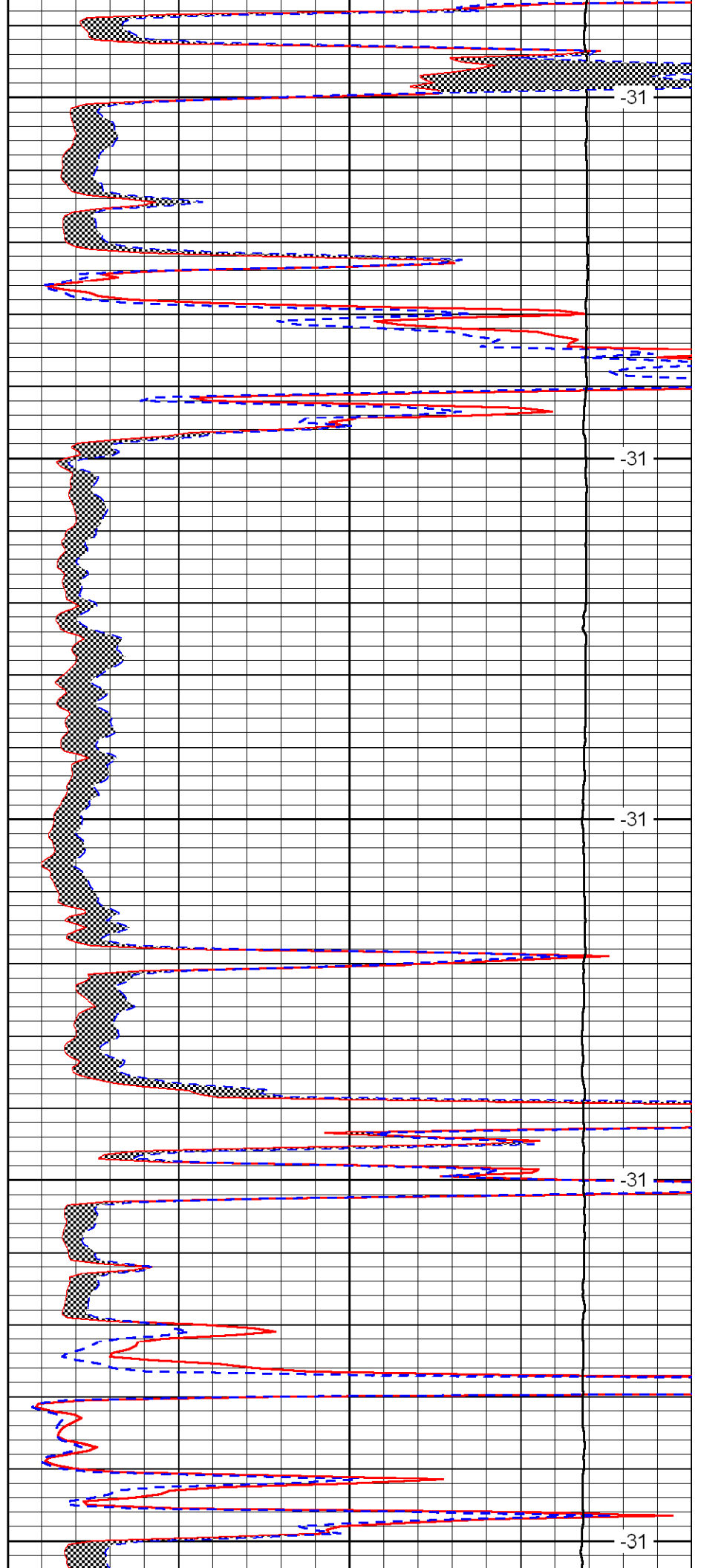
3550

3600

3650

3700

3750



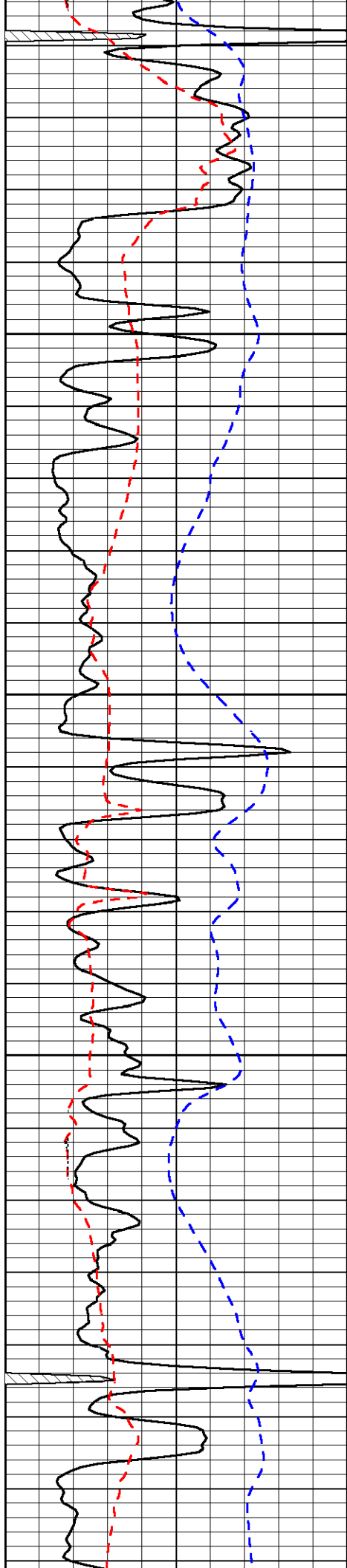
-31

-31

-31

-31

-31

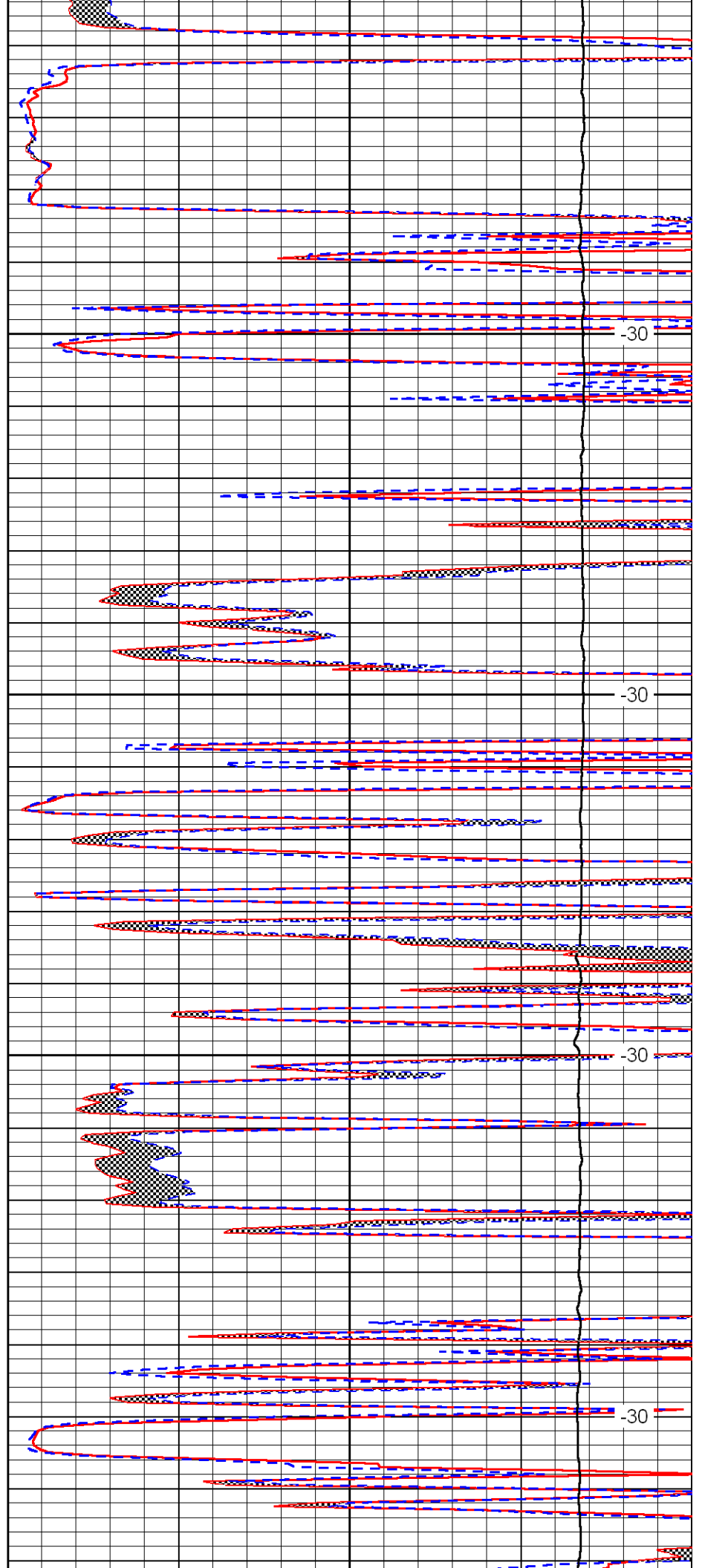


3800

3850

3900

3950

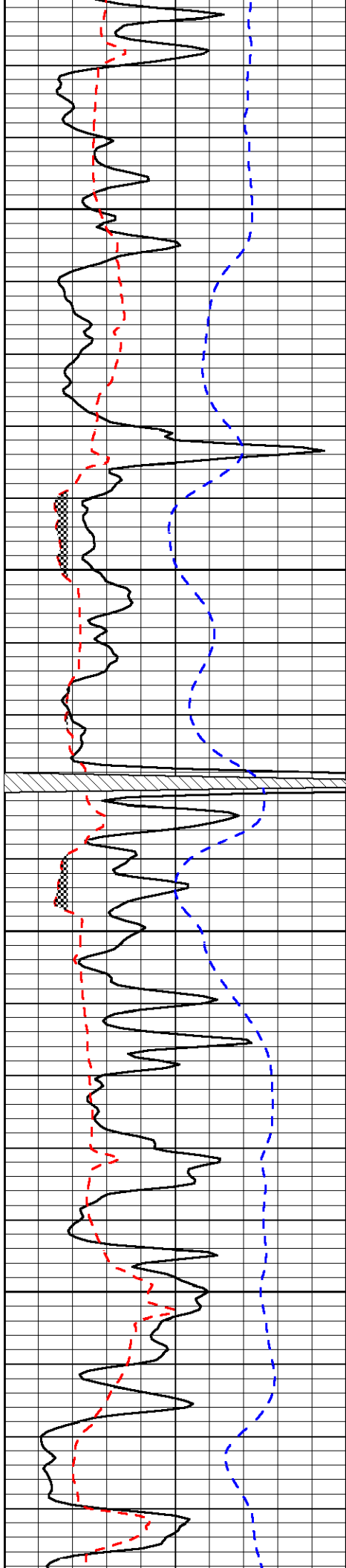


-30

-30

-30

-30

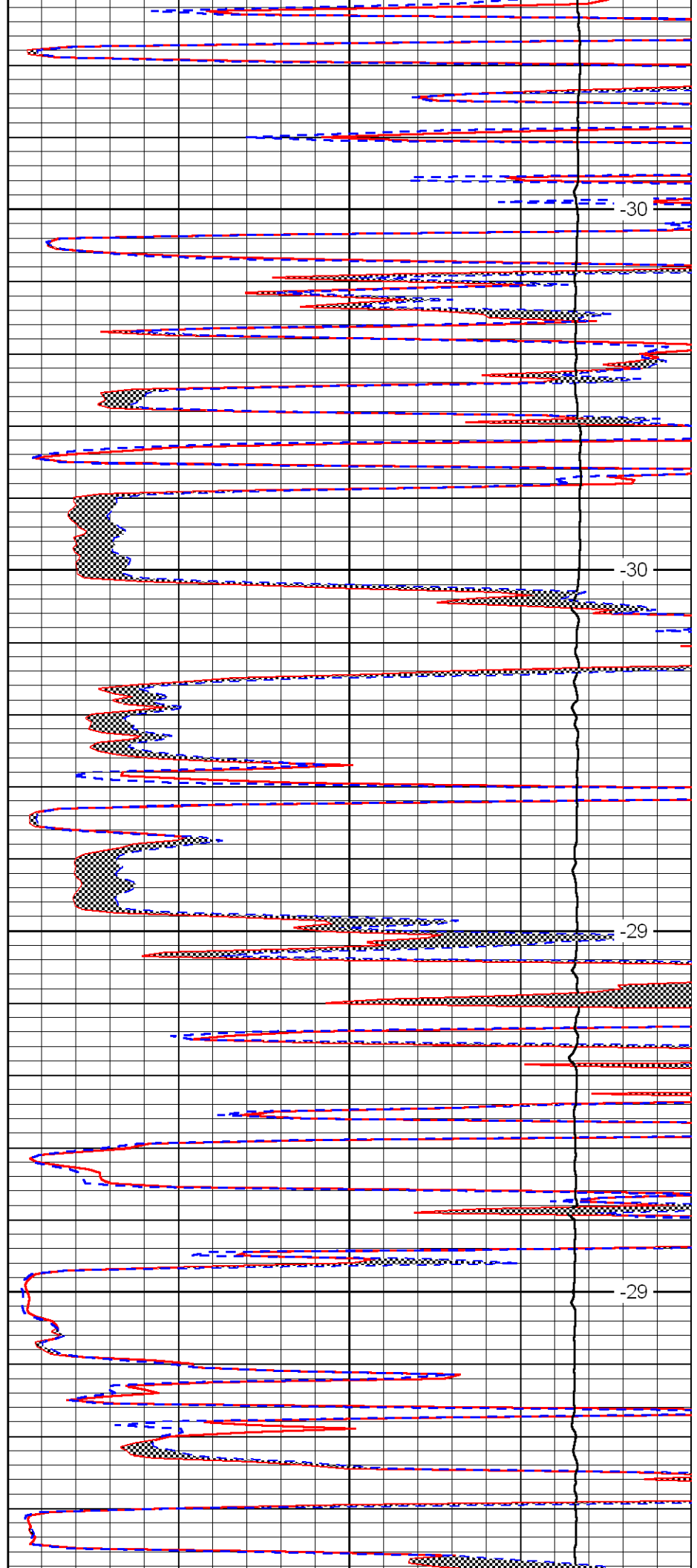


4000

4050

4100

4150

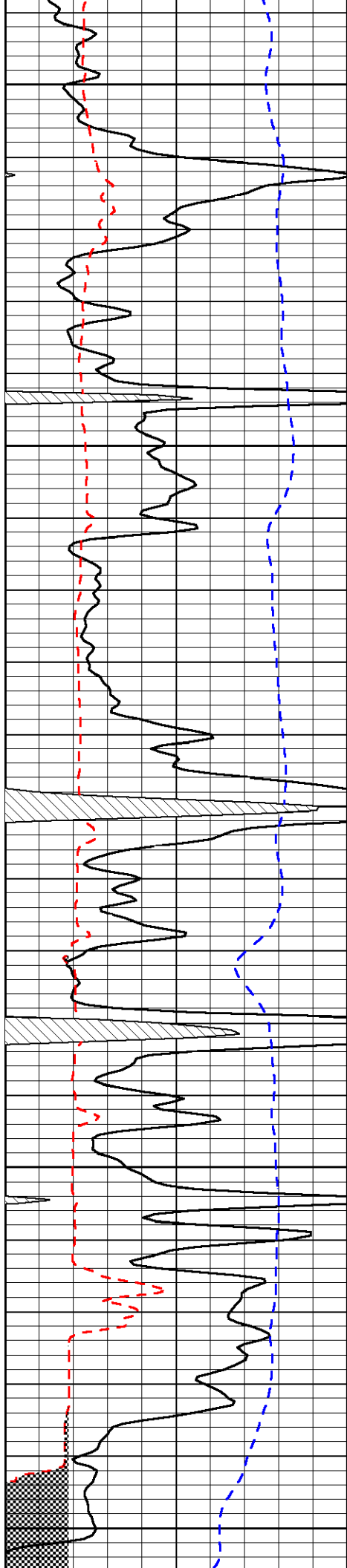


-30

-30

-29

-29



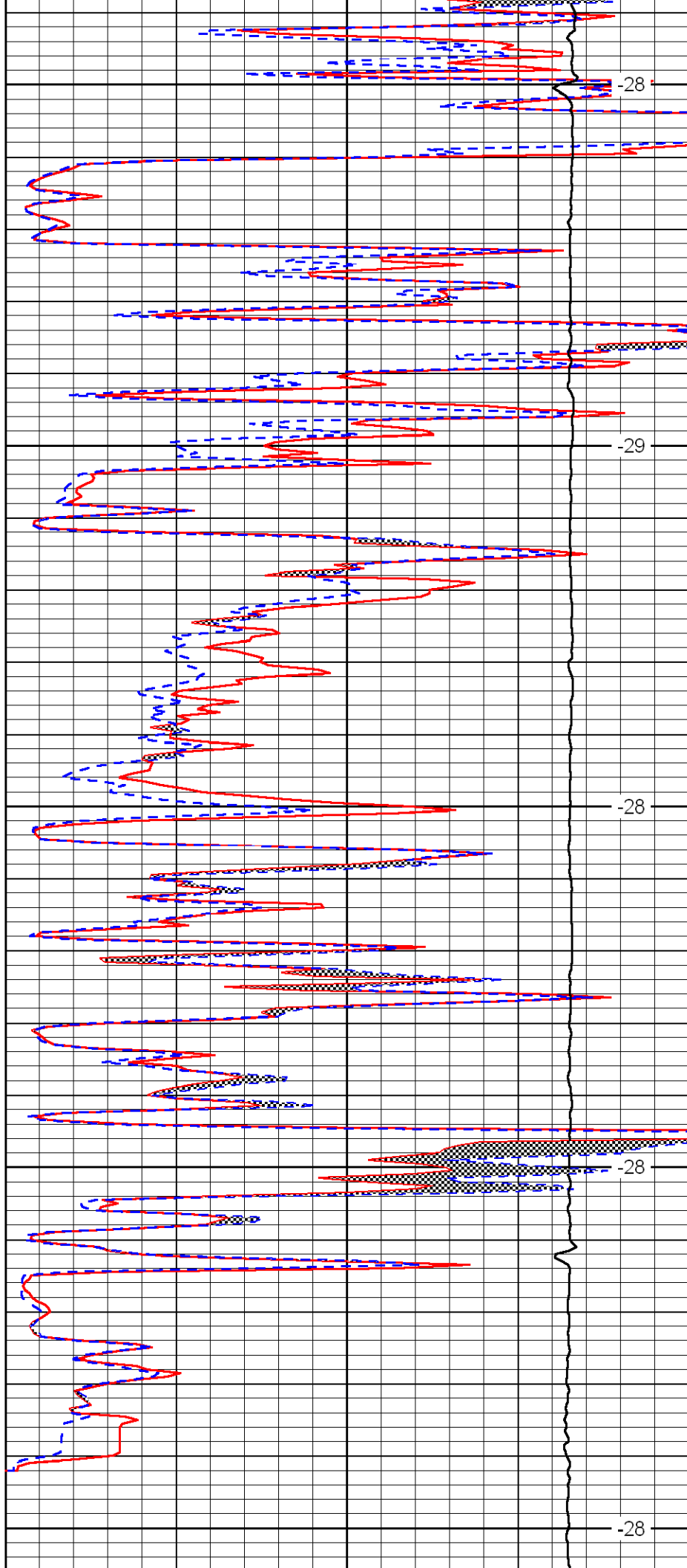
4200

4250

4300

4350

4400



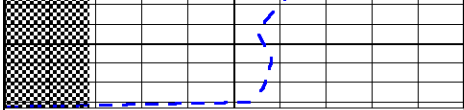
-28

-29

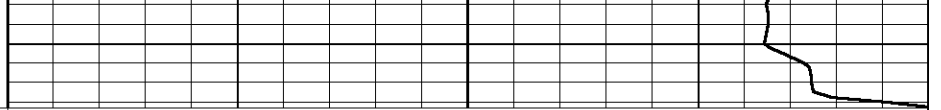
-28

-28

-28



0	Gamma Ray	150
6	Micro Log Caliper (in)	16
-200	SP (MV)	0



0	Micro Inverse 1 X 1 (Ohm-m)	40
0	Micro Normal 2" (Ohm-m)	40
10000	Line Weight (lb)	0

LSPD
(ft/min)