



# Dual Induction Log

DIGITAL LOG (785) 625-3858

API No.	15-083-21,610-00-00		
Company	American Warrior, Inc.		
Well	Webster #1-24		
Field	Hanston-Oppy East		
County	Hodgeman	State	Kansas
Location	140' FNL & 1598' FEL		
Sec: 24	Twp: 22S	Rge: 22W	
Permanent Datum	Ground Level	Elevation 2149	
Log Measured From	Kelly Bushing	11 Ft. Above Perm. Datum	
Drilling Measured From	Frotkelly Bushing	K.B. 2160 D.F. 2149 G.L. 2149	
Other Services	CNL / CDL MEL / BHCS		

Date	10/4/2009	
Run Number	One	
Depth Driller	4409	
Depth Logger	4410	
Bottom Logged Interval	4409	
Top Log Interval	1300	
Casing Driller	8.625 @ 1315	
Casing Logger	1316	
Bit Size	7.875	
Type Fluid in Hole	Chemical	
Salinity, ppm CL	6,300	
Density / Viscosity	9.5	61
pH / Fluid Loss	10.5	10.4
Source of Sample	Flowline	
Rm @ Meas. Temp	.4	@ 68
Rmf @ Meas. Temp	.3	@ 68
Rmc @ Meas. Temp	.54	@ 68
Source of Rmf / Rmc	Charts	
Rm @ BHT	.23	@ 120
Operating Rig Time	5 1/2 Hours	
Max Rec. Temp. F	120	
Equipment Number	4	
Location	Hays	
Recorded By	T. Martin	
Witnessed By	Jason Alm	

<<< Fold Here >>>

All interpretations are opinions based on inferences from electrical or other measurements and we cannot and do not guarantee the accuracy or correctness of any interpretation, and we shall not, except in the case of gross or willful negligence on our part, be liable or responsible for any loss, costs, damages, or expenses incurred or sustained by anyone resulting from any interpretation made by any of our officers, agents or employees. These interpretations are also subject to our general terms and conditions set out in our current Price Schedule.

### Comments

Thank you for using Log-Tech, Inc.  
(785) 625-3858

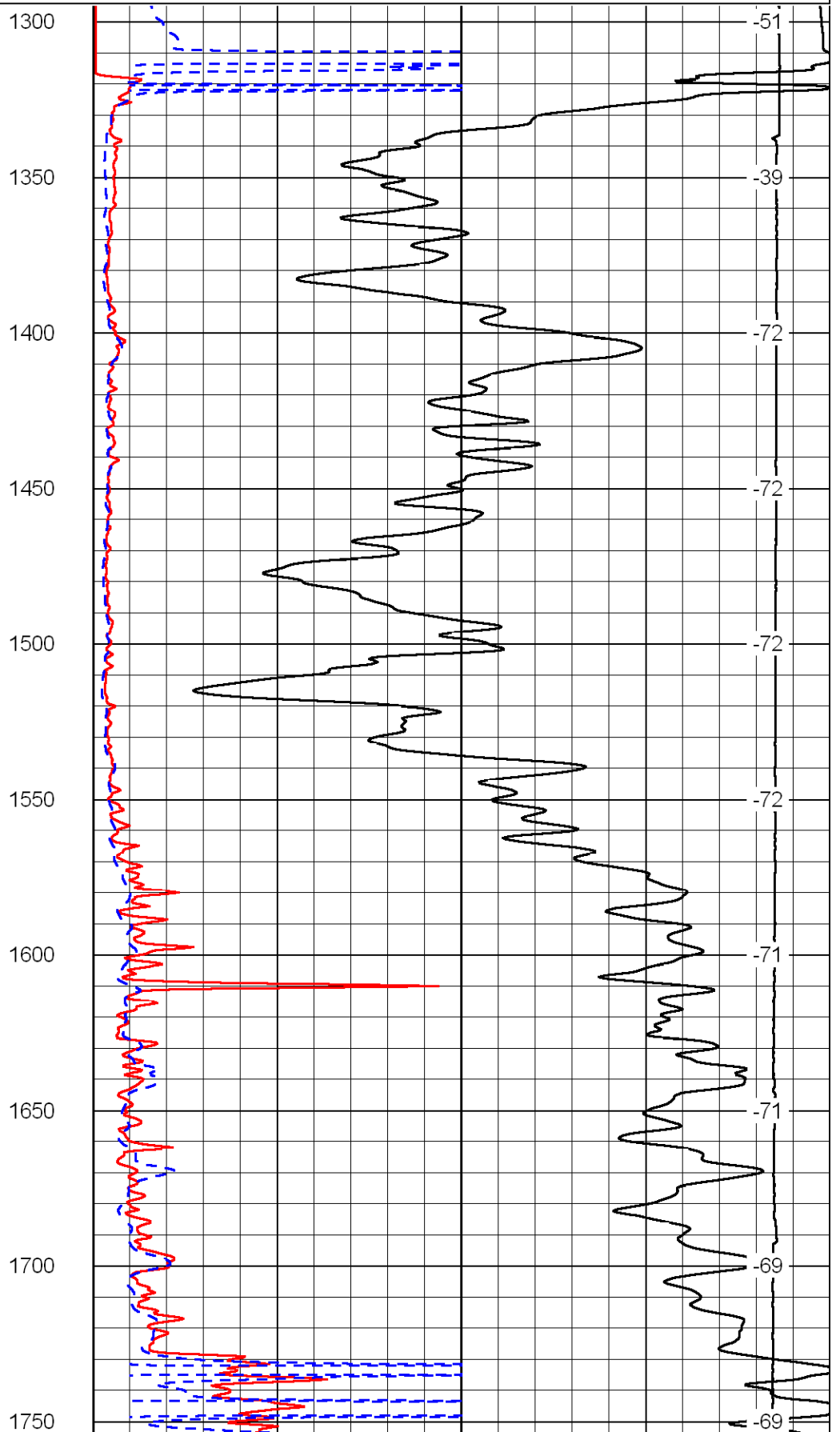
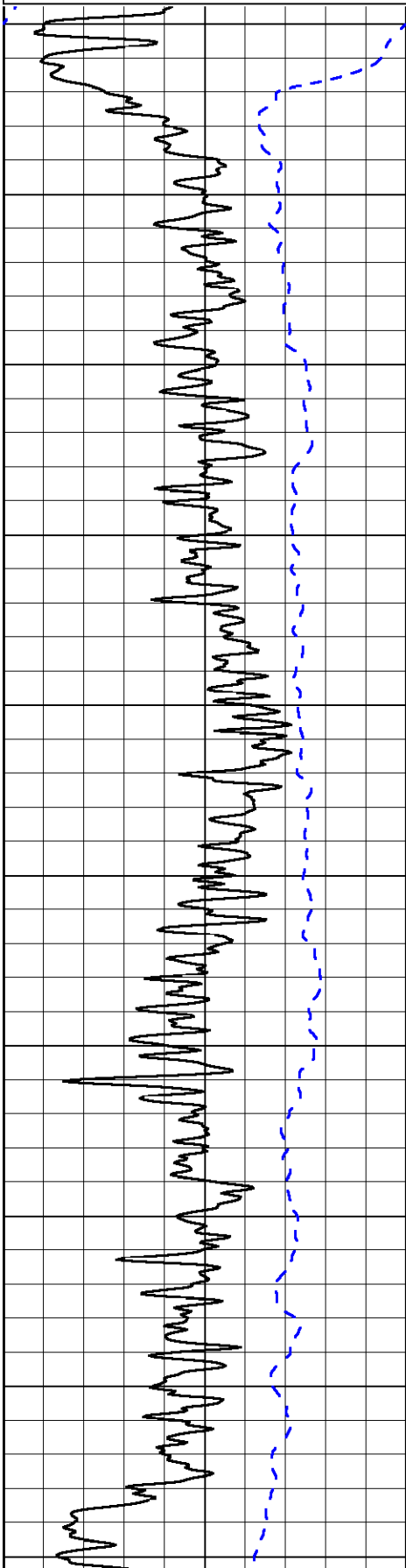
Hanston 2 E to 230 Rd, 1 S to stop sign, N into

Database File: c:\warrior\data\amwar\_webster #1-24\awhd.db  
 Dataset Pathname: dil\awstc  
 Presentation Format: dil2in  
 Dataset Creation: Sun Oct 04 19:52:20 2009  
 Charted by: Depth in Feet scaled 1:600

0 Gamma Ray 150  
-200 SP (MV) 0

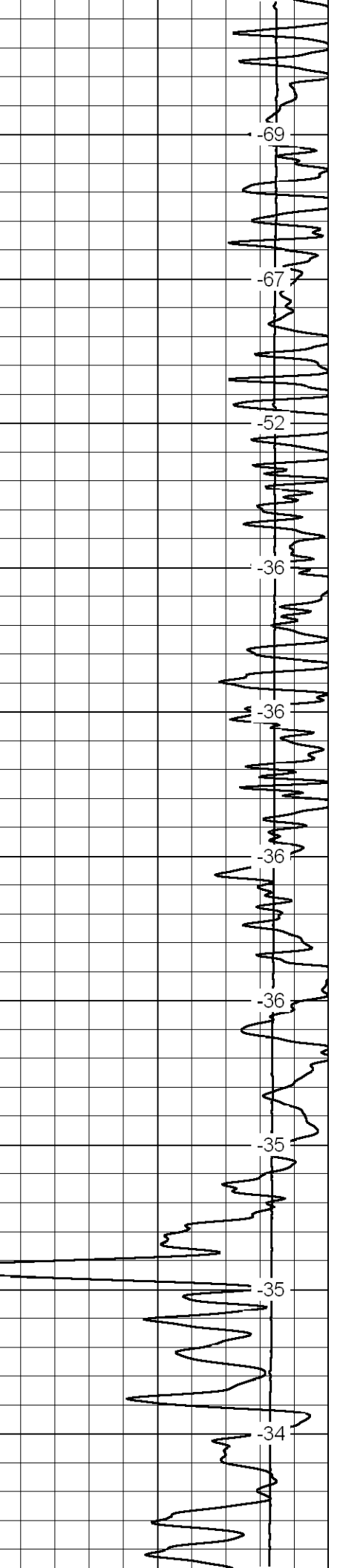
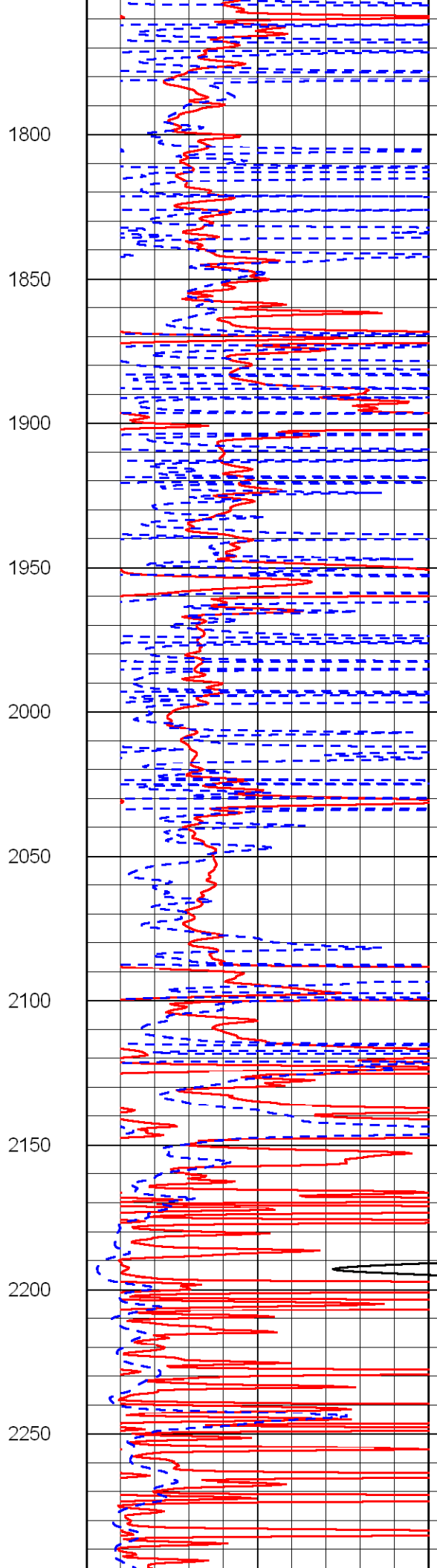
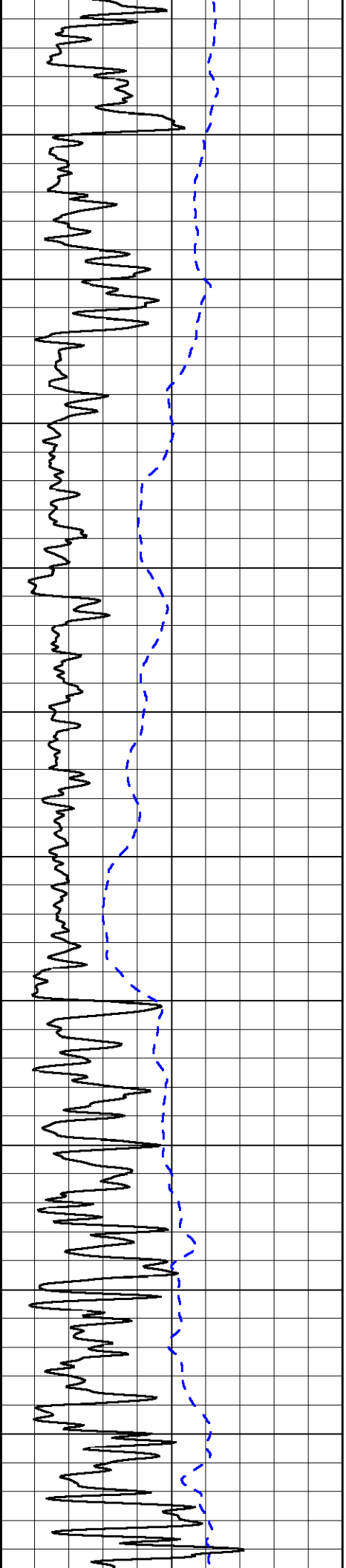
0 Shallow Resistivity (Ohm-m) 50  
0 Deep Resistivity (Ohm-m) 50  
1000 Conductivity (mmho/m) 0  
15000 Line Tension (lb) 0  
50 Shallow Resistivity (Ohm-m) 500  
50 Deep Resistivity (Ohm-m) 500

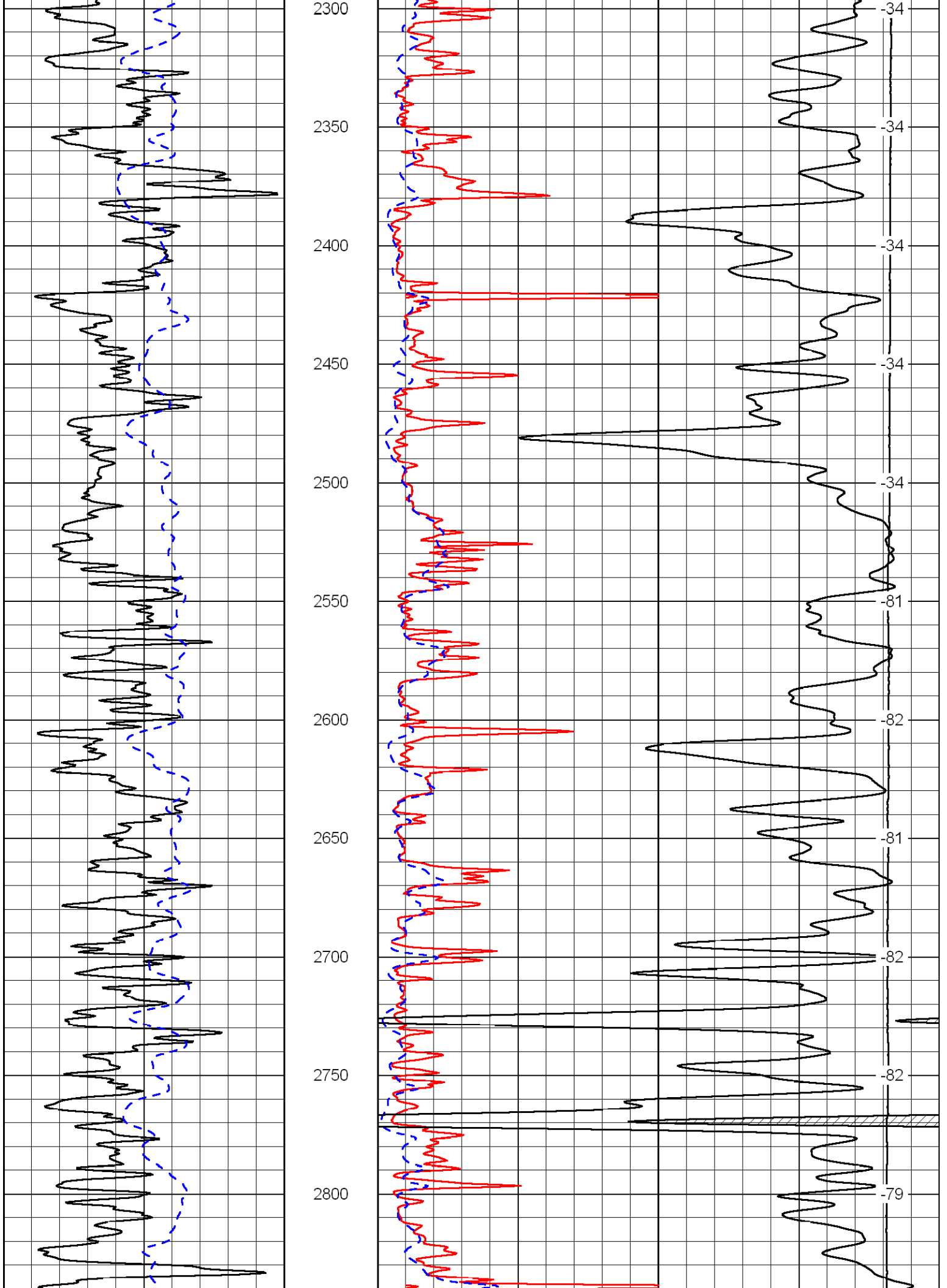
LSPD  
(ft/min)

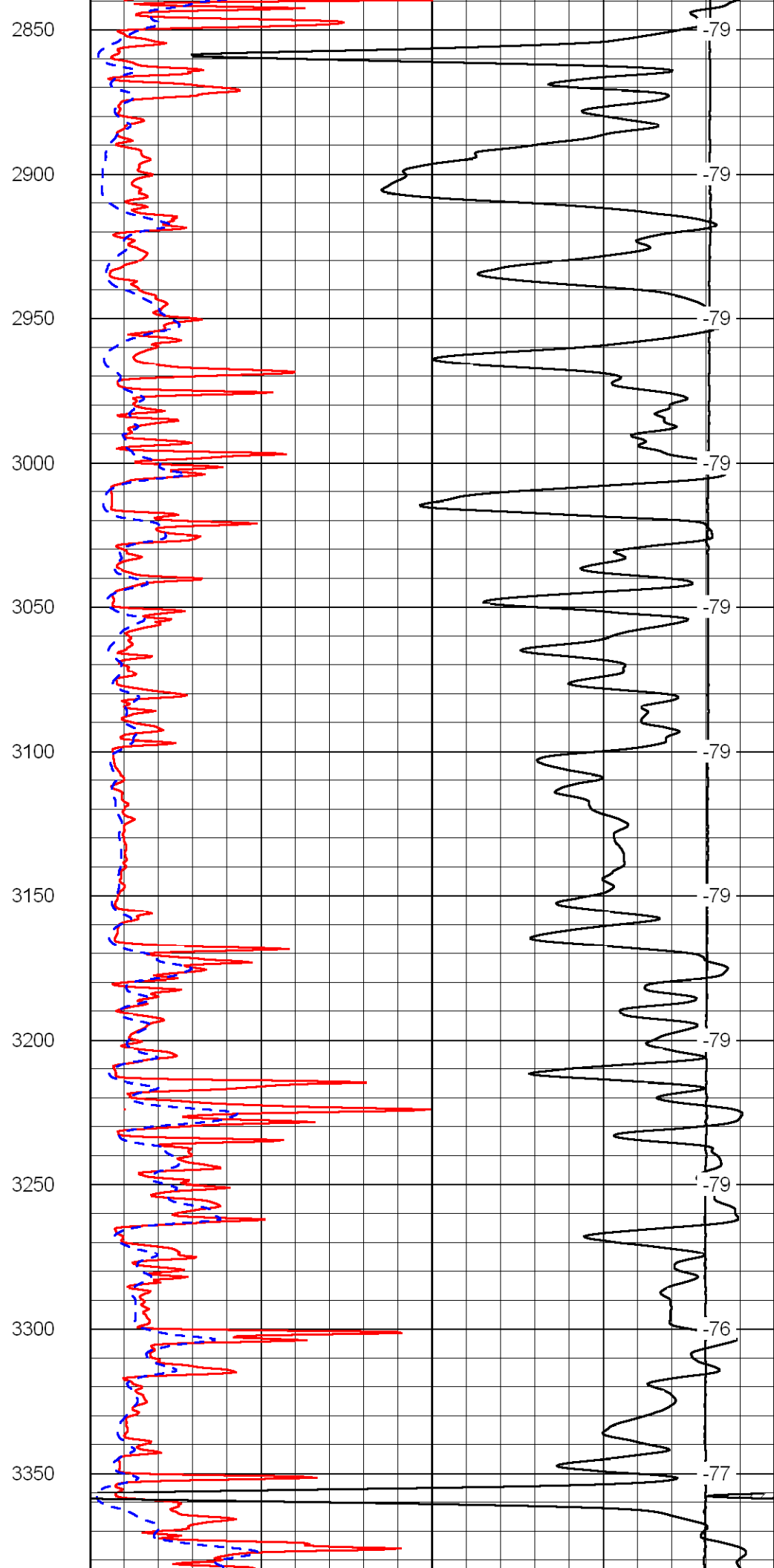
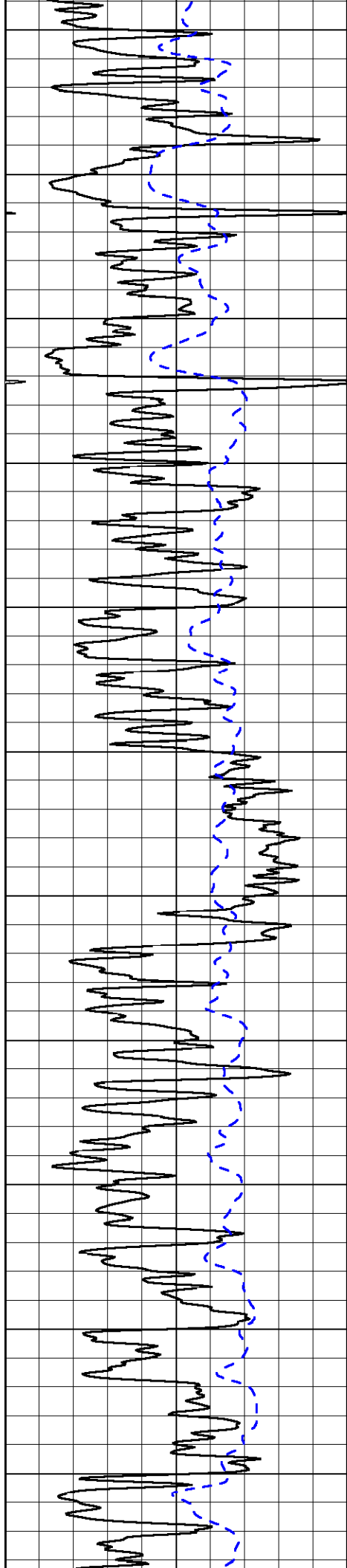


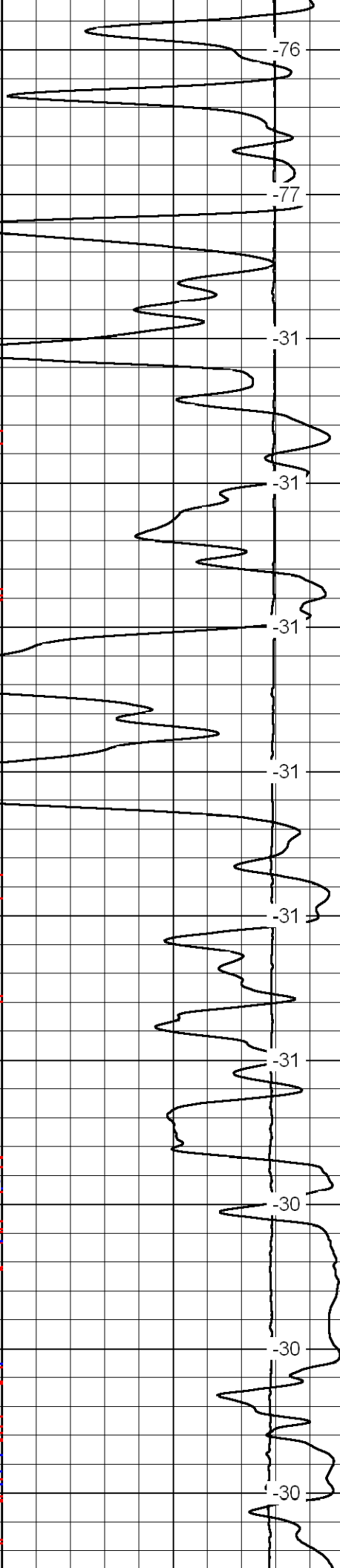
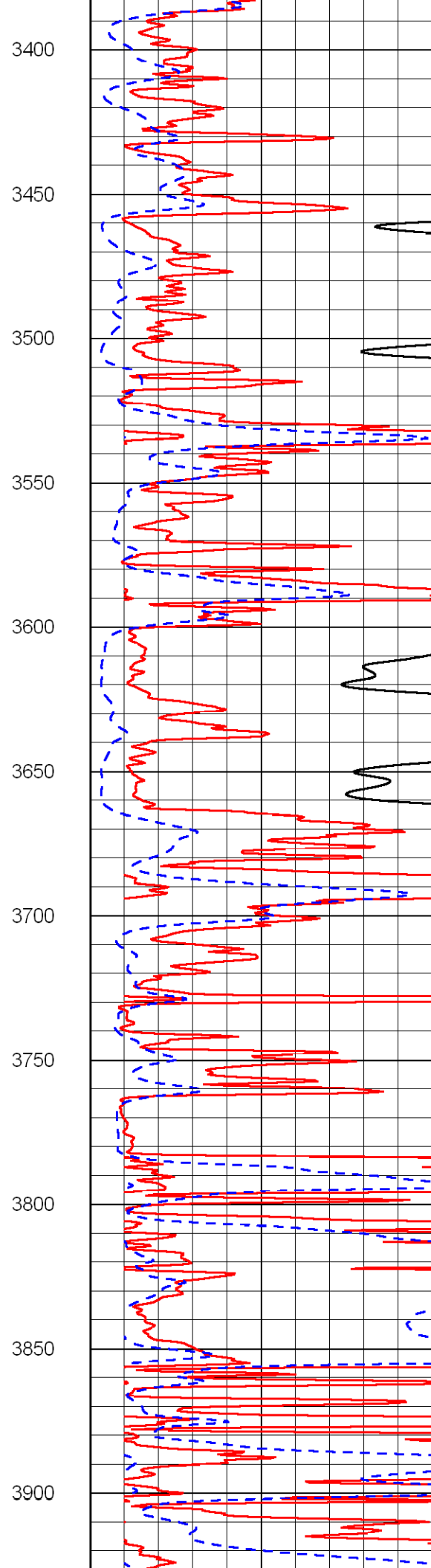
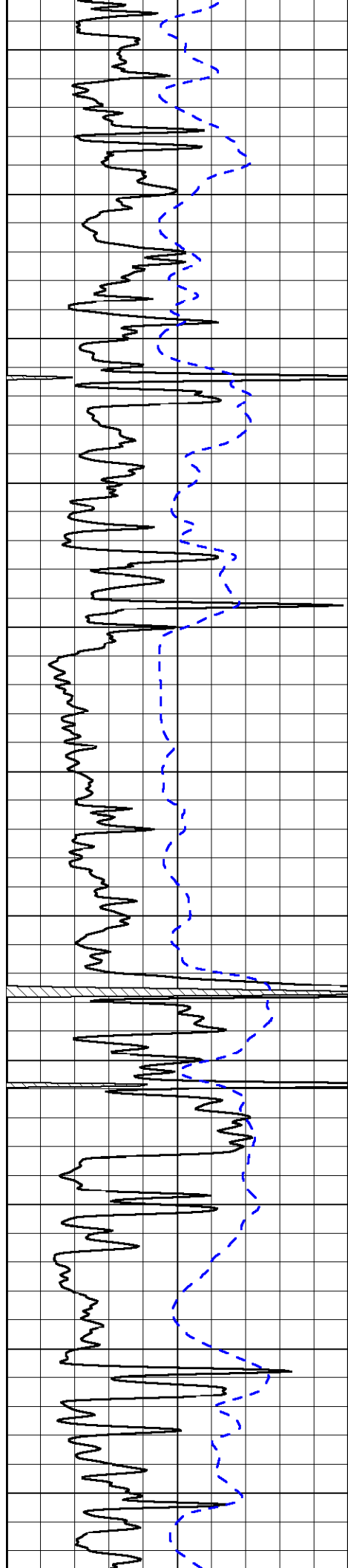
1300  
1350  
1400  
1450  
1500  
1550  
1600  
1650  
1700  
1750

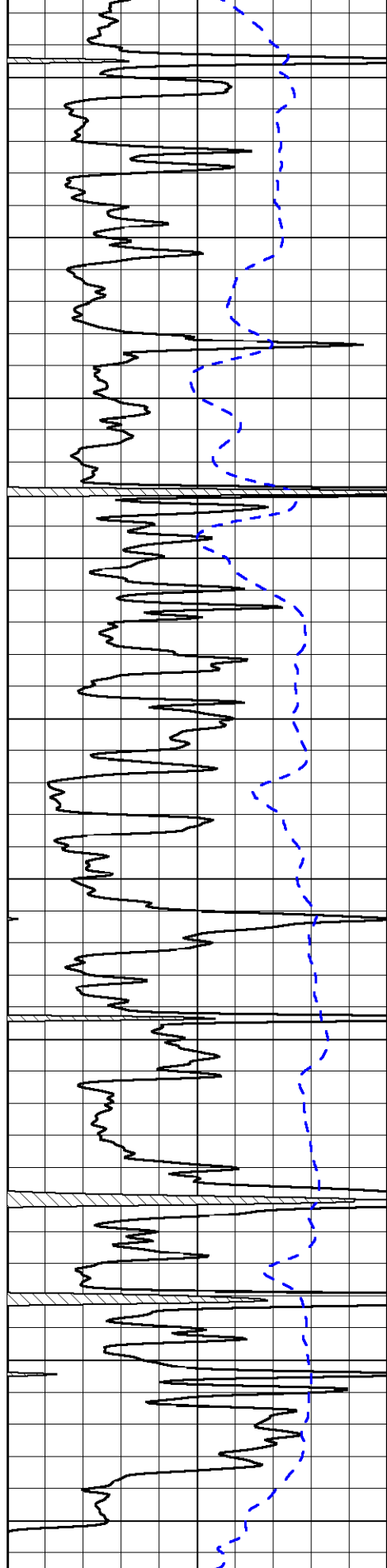
-51  
-39  
-72  
-72  
-72  
-72  
-71  
-71  
-69  
-69



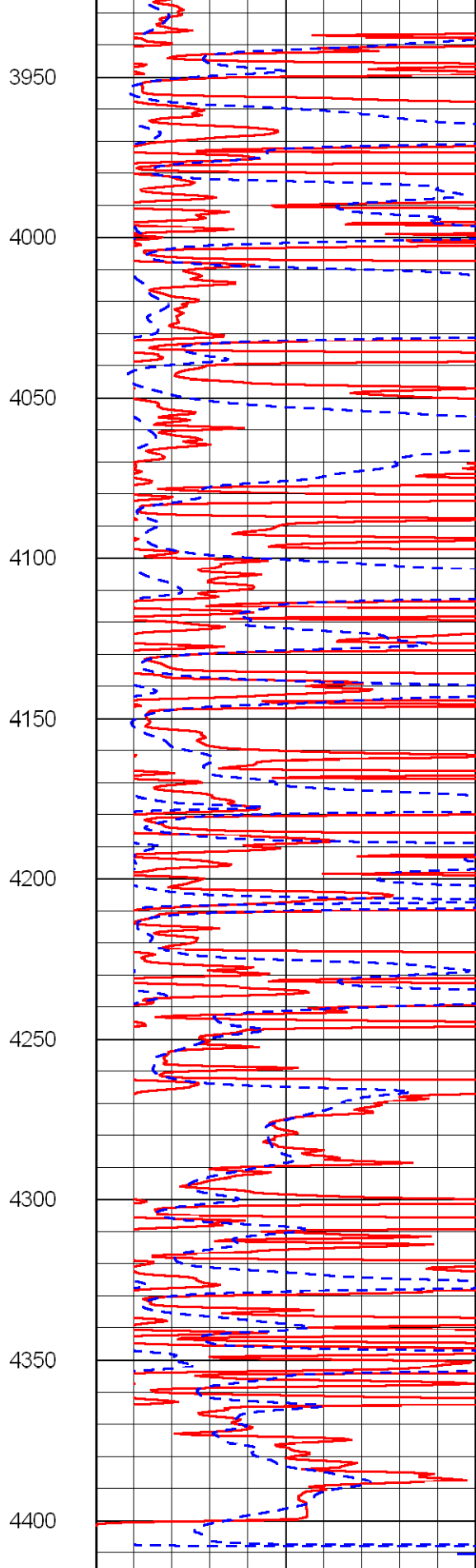




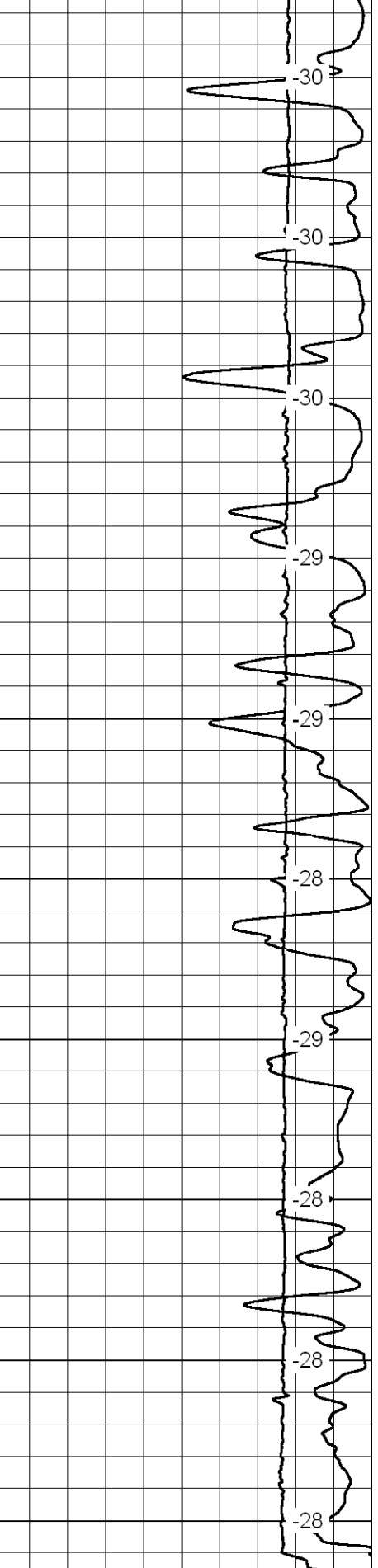




0 Gamma Ray 150  
 -200 SP (MV) 0



0 Shallow Resistivity (Ohm-m) 50  
 0 Deep Resistivity (Ohm-m) 50



LSPD (ft/min)

1000 Conductivity (mmho/m)  
 15000 Line Tension (lb)

0  
 0

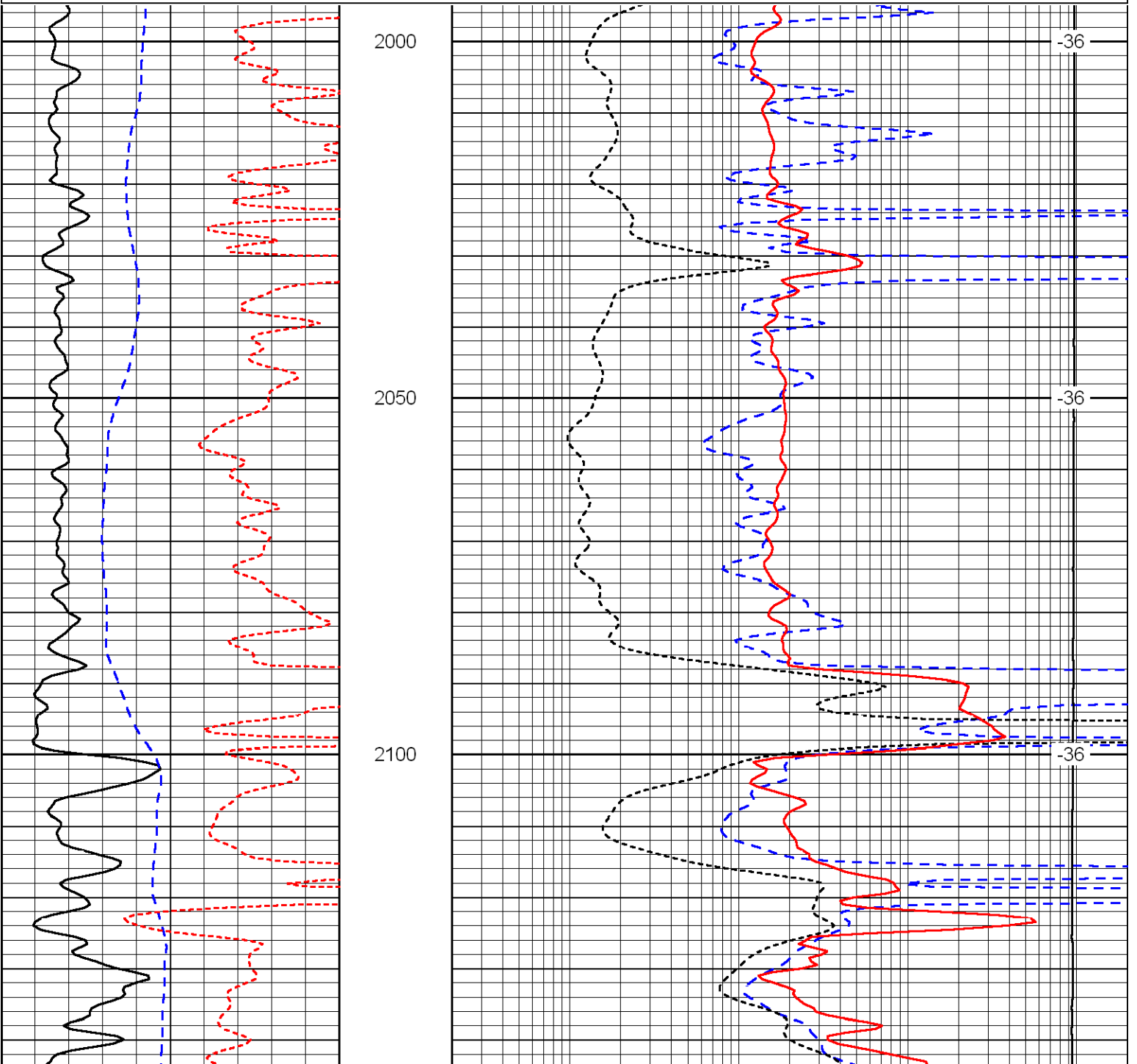
Shallow Resistivity		
50	(Ohm-m)	500
50 Deep Resistivity (Ohm-m) 500		

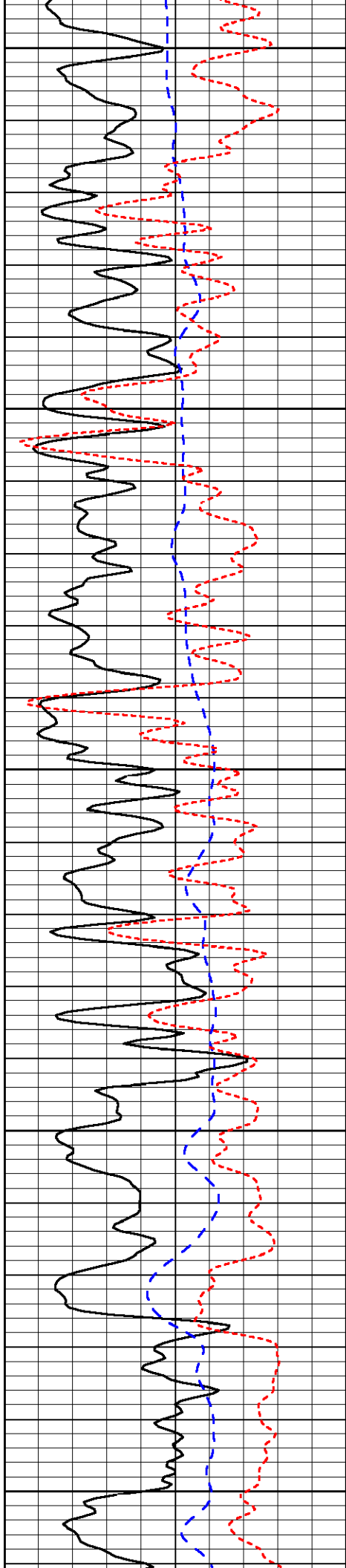
Database File: c:\warrior\data\amwar\_webster #1-24\awhd.db  
 Dataset Pathname: dil\awstk  
 Presentation Format: dil  
 Dataset Creation: Sun Oct 04 19:52:20 2009  
 Charted by: Depth in Feet scaled 1:240

0	Gamma Ray	150
-200	SP (MV)	0
-160	Rxo / Rt	40

0.2	Deep Resistivity (Ohm-m)	2000
0.2	Medium Resistivity (Ohm-m)	2000
0.2	Shallow Resistivity (Ohm-m)	2000
15000	Line Tension (lb)	0

LSPD  
 (ft/min)





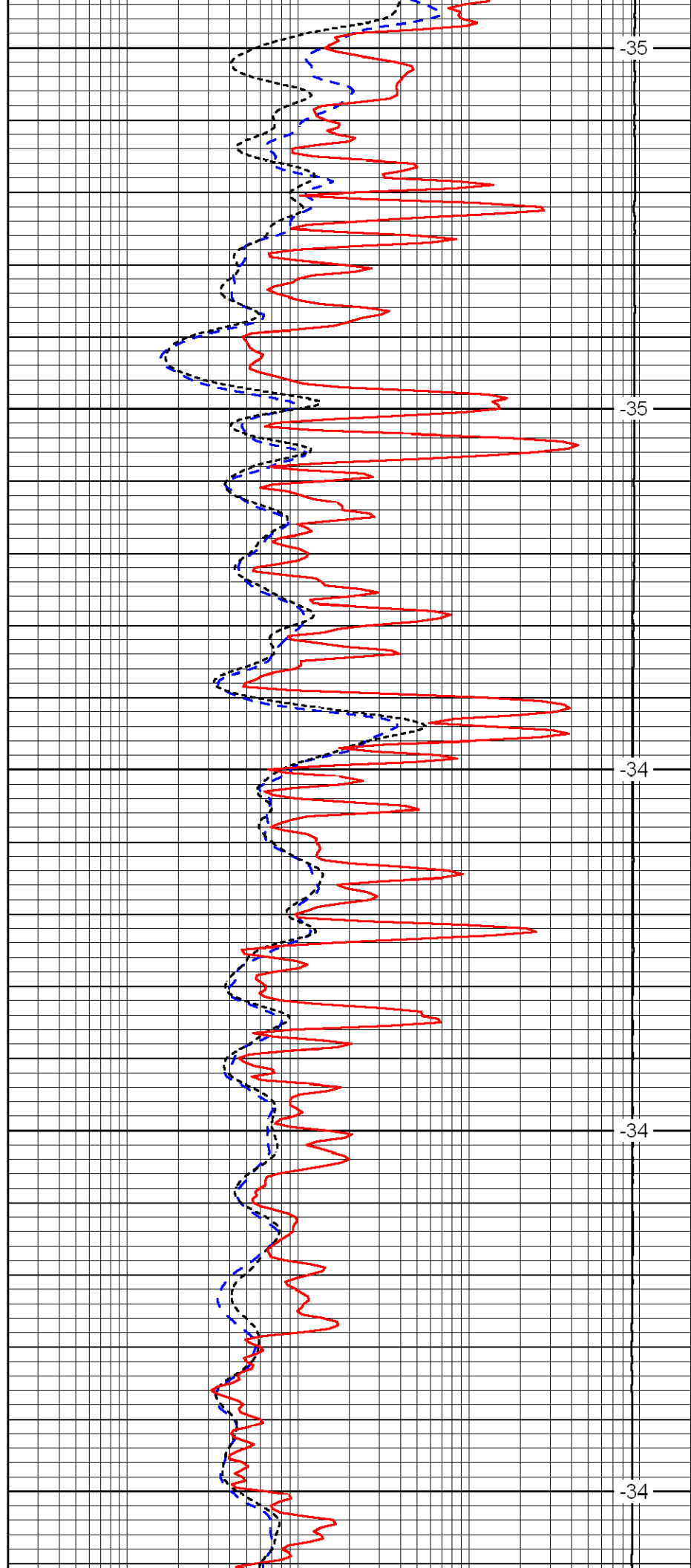
2150

2200

2250

2300

2350



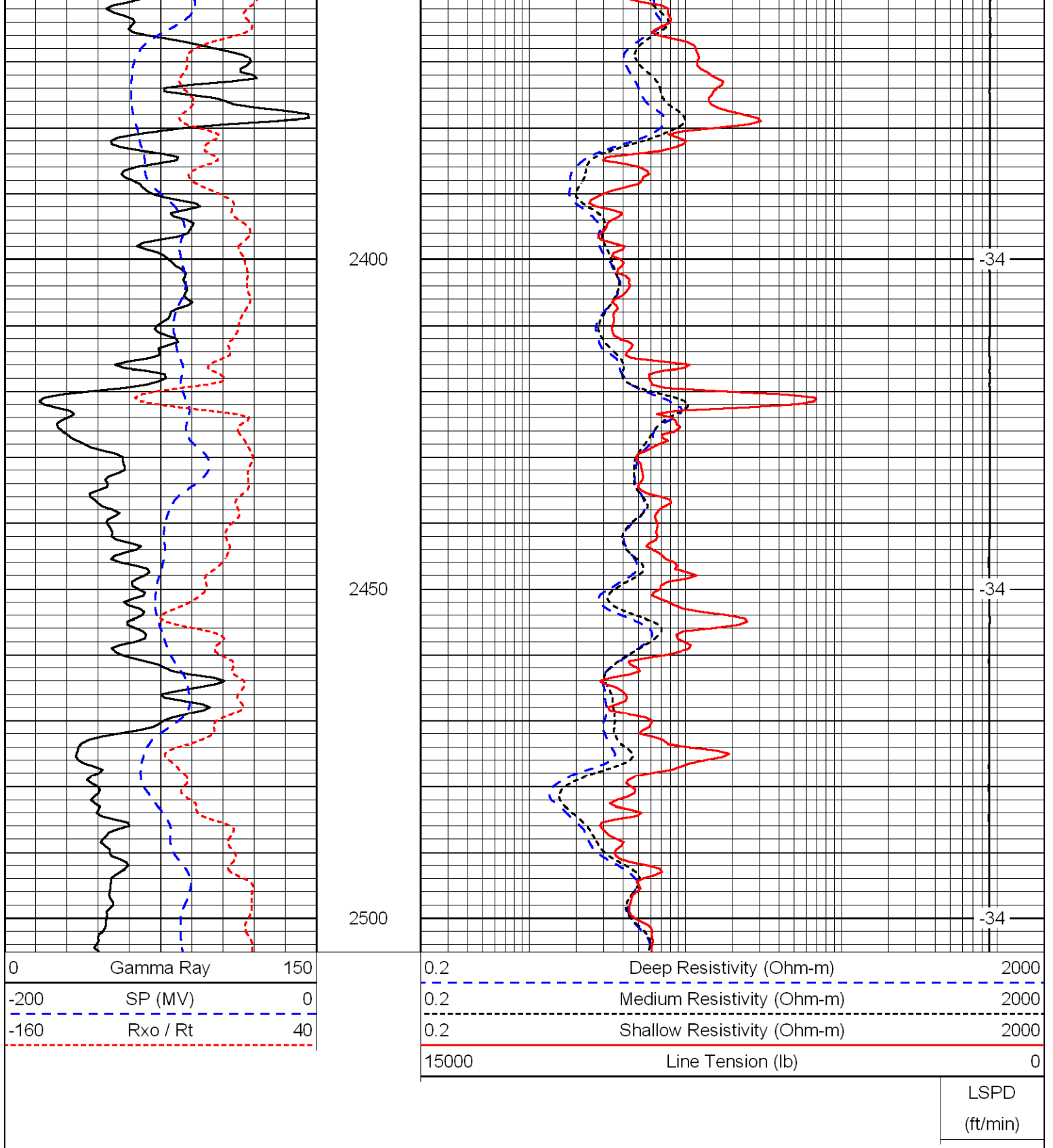
-35

-35

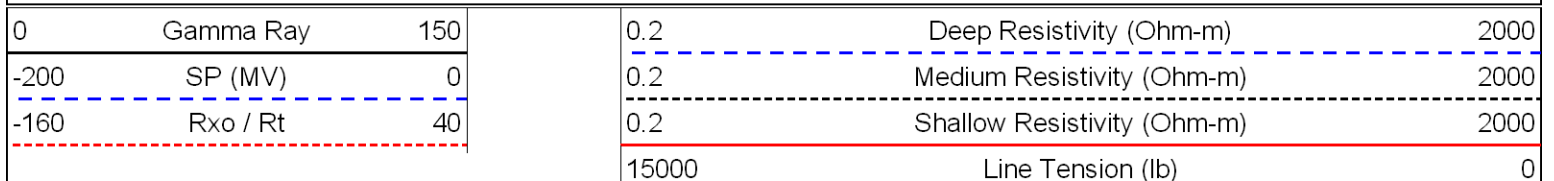
-34

-34

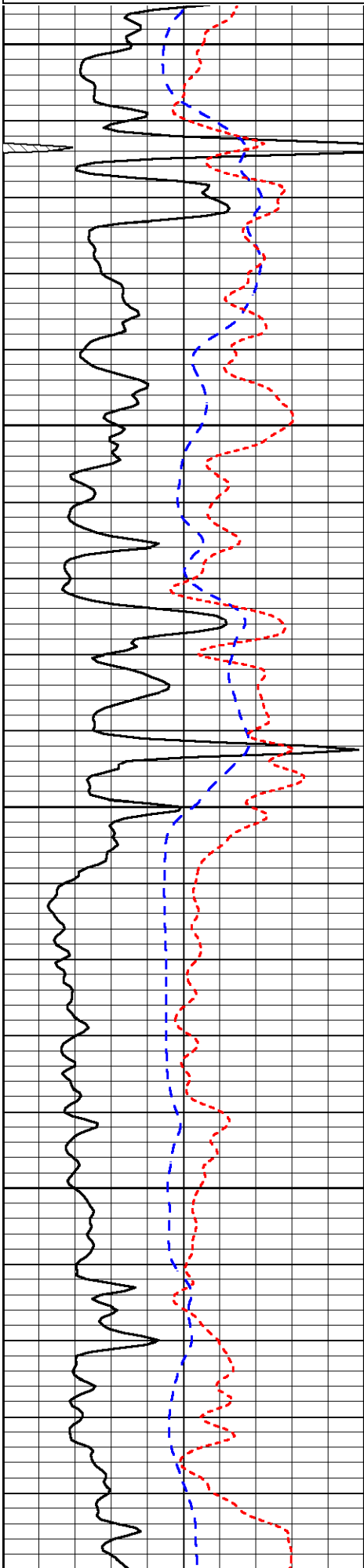
-34



Database File: c:\warrior\data\amwar\_webster #1-24\awhd.db  
 Dataset Pathname: dil/awstk  
 Presentation Format: dil  
 Dataset Creation: Sun Oct 04 19:52:20 2009  
 Charted by: Depth in Feet scaled 1:240



LSPD  
(ft/min)



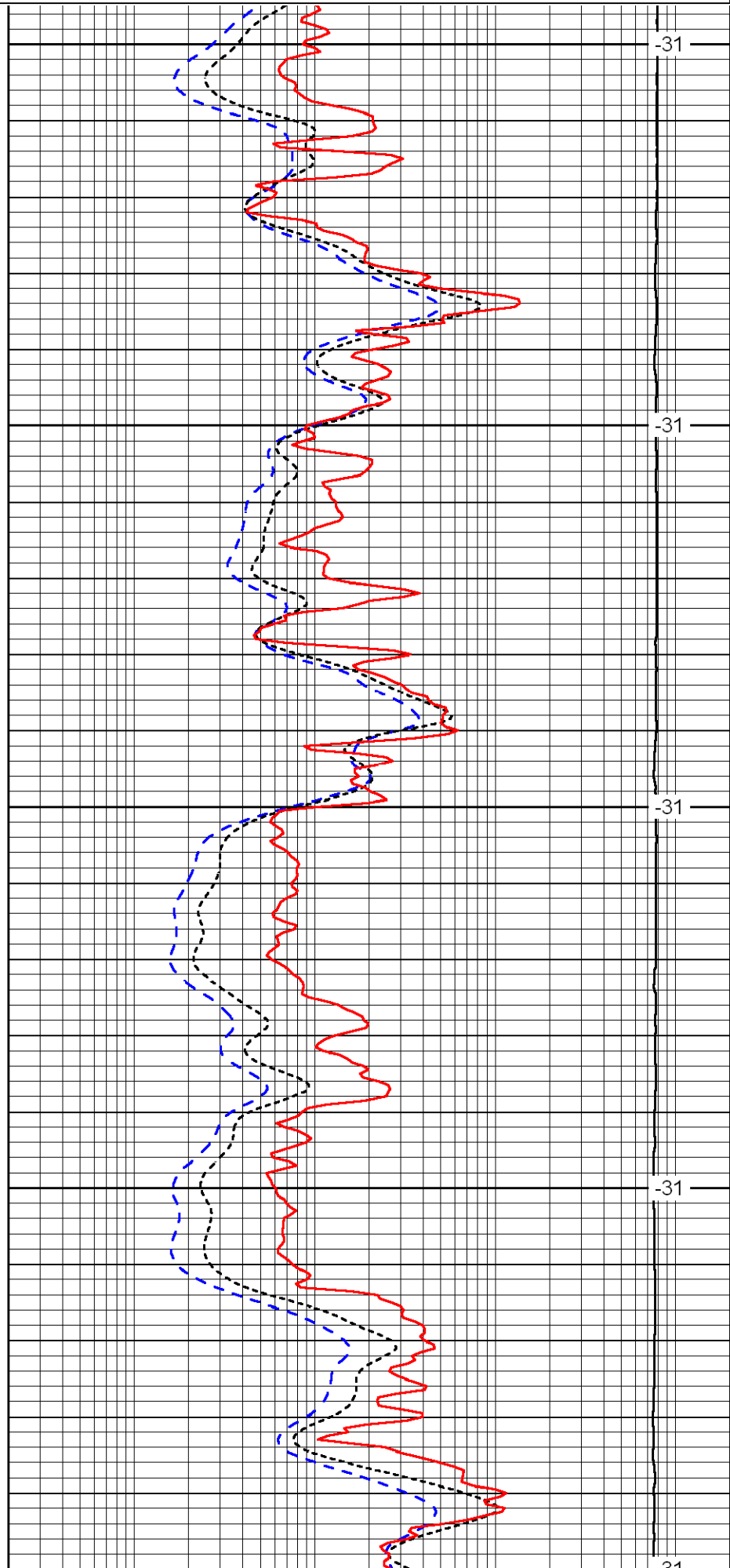
3500

3550

3600

3650

3700



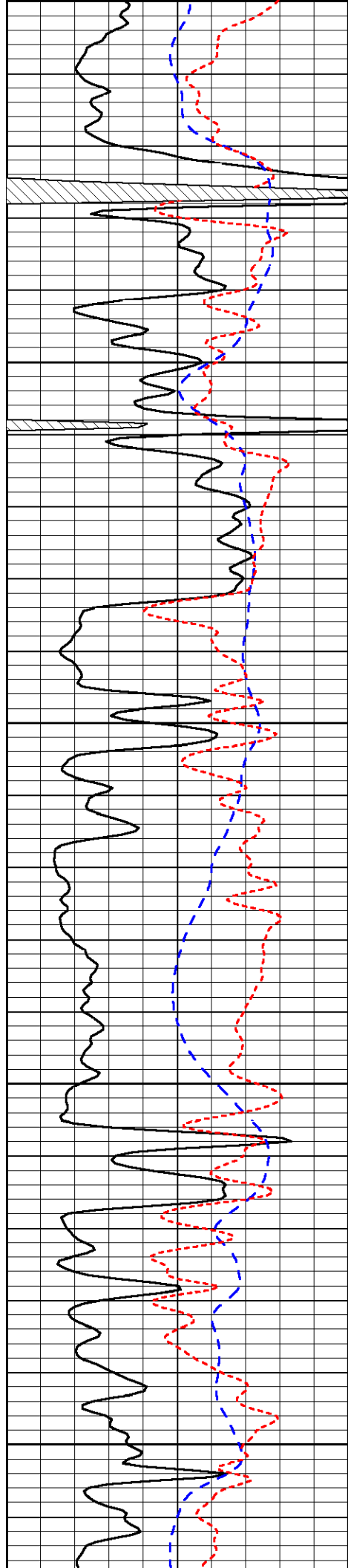
-31

-31

-31

-31

-31



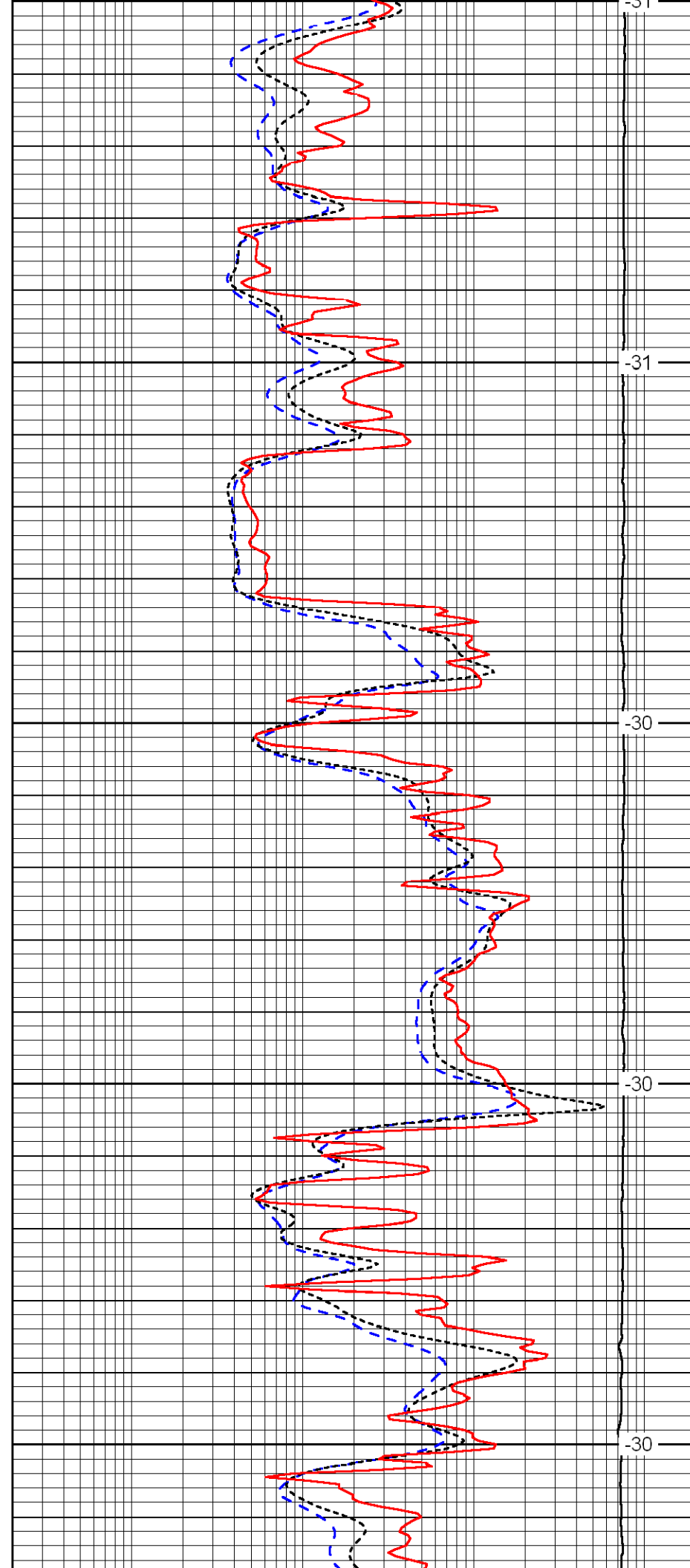
3700

3750

3800

3850

3900



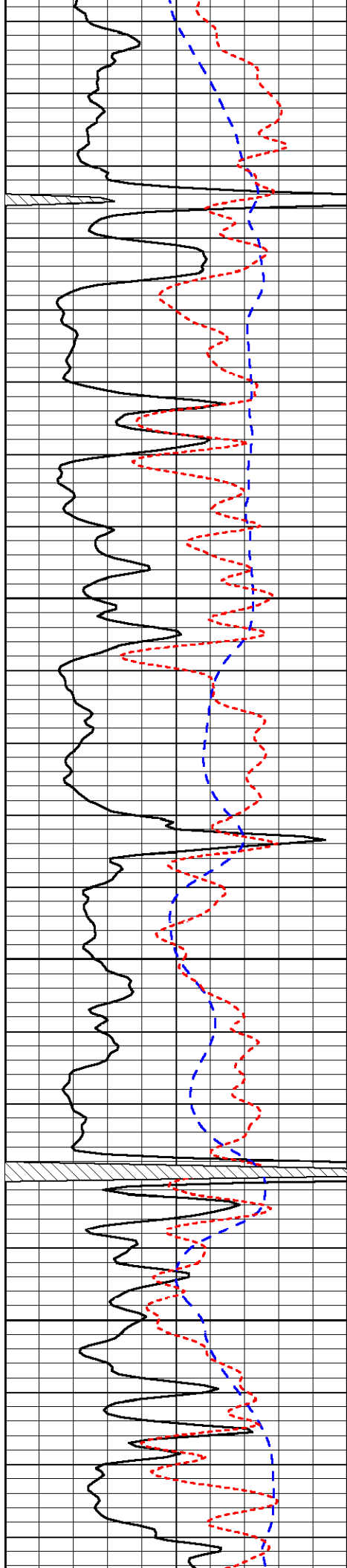
-31

-31

-30

-30

-30

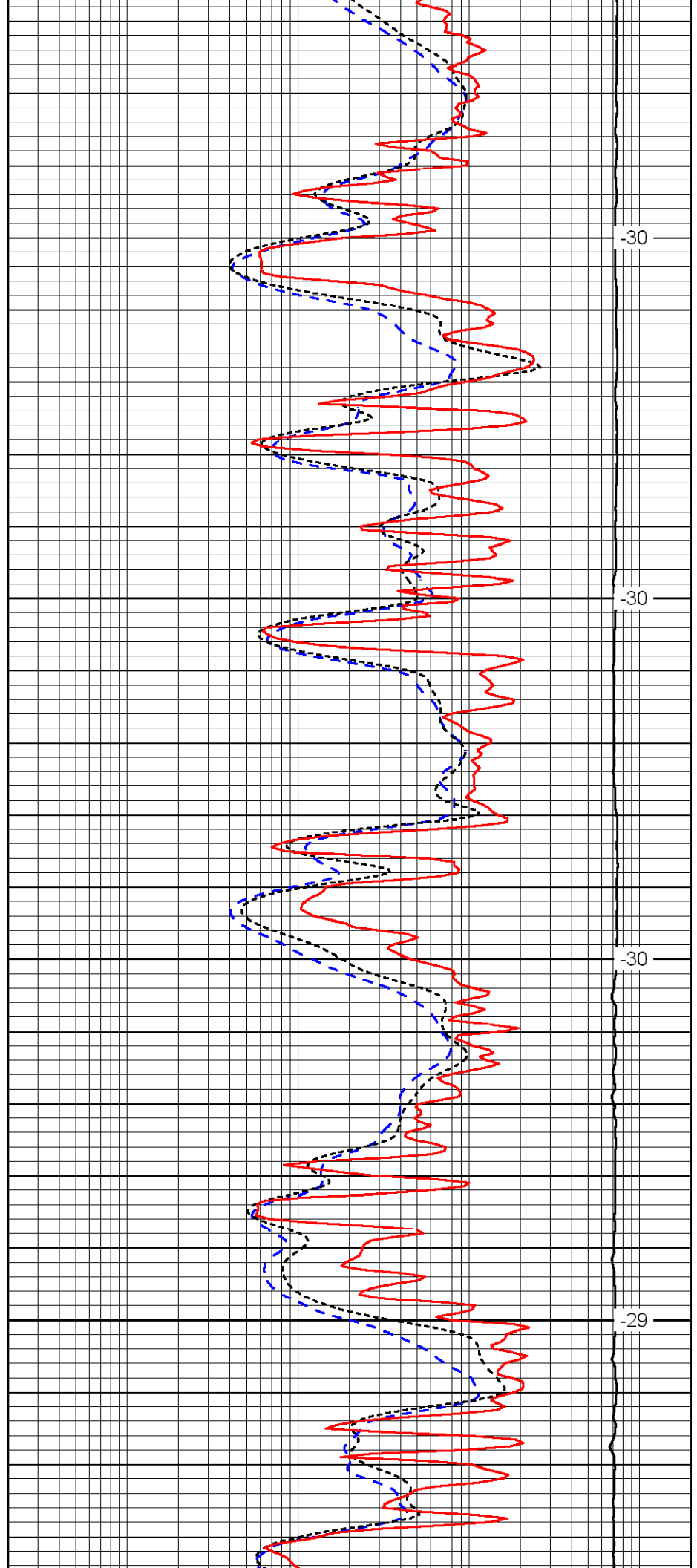


3950

4000

4050

4100

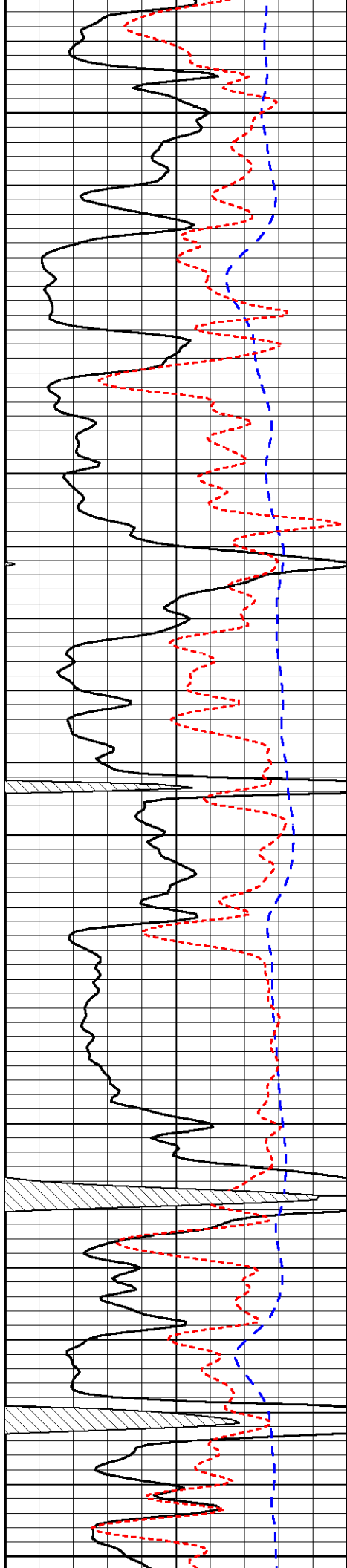


-30

-30

-30

-29



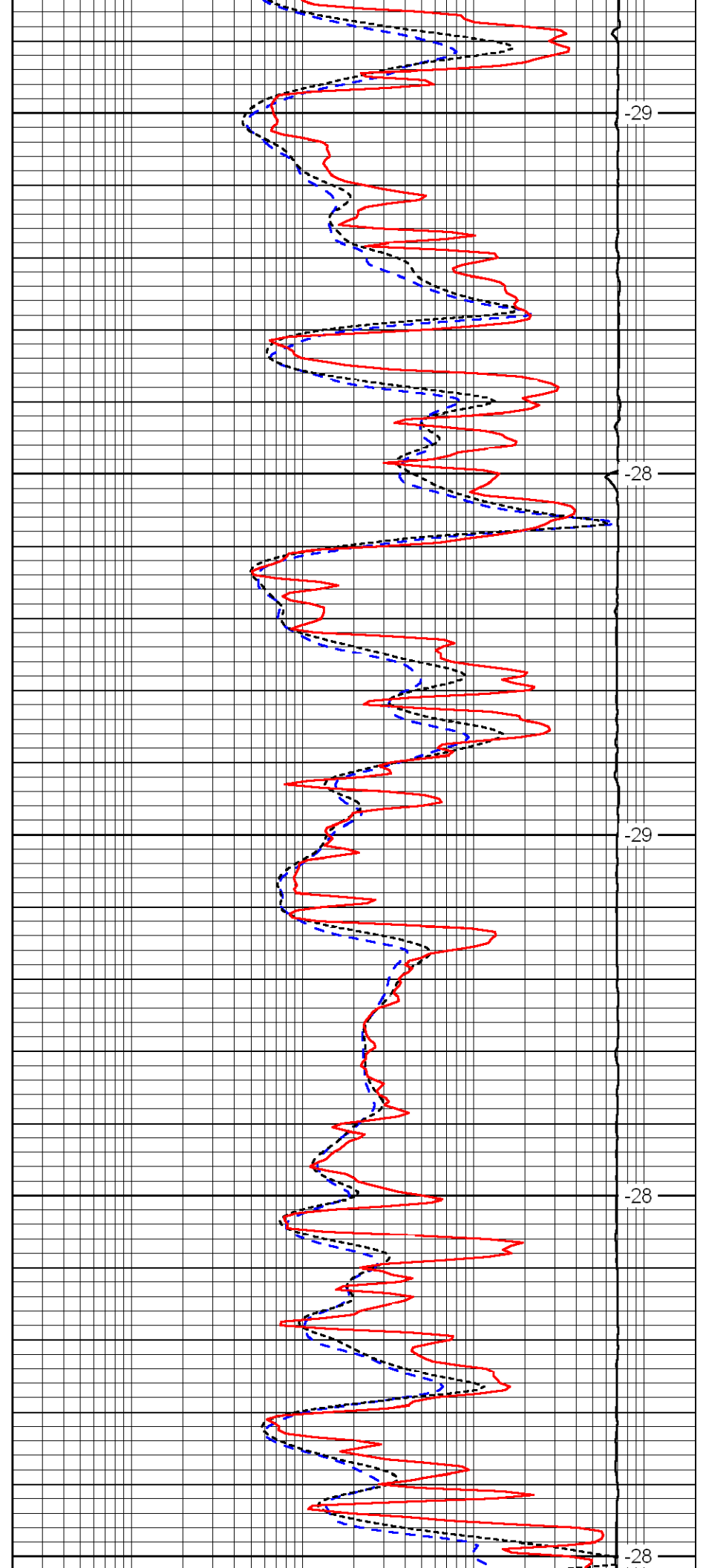
4150

4200

4250

4300

4350



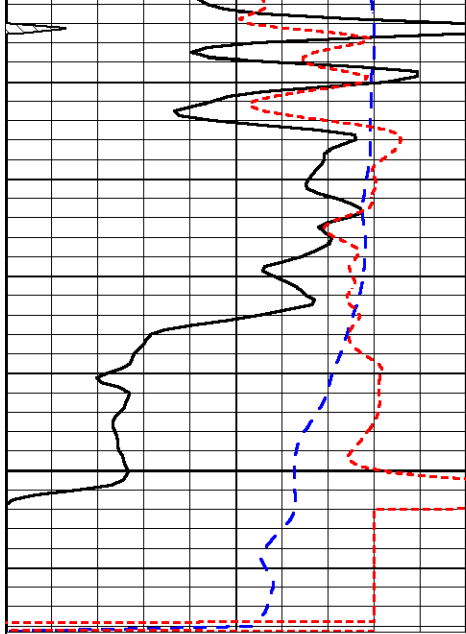
-29

-28

-29

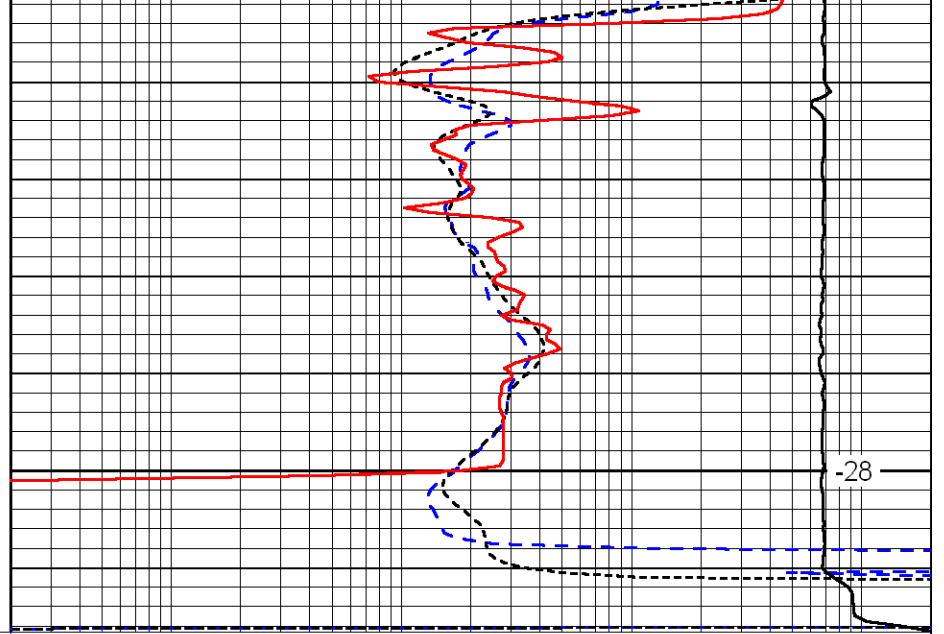
-28

-28



4400

0	Gamma Ray	150
-200	SP (MV)	0
-160	Rxo / Rt	40



-28

0.2	Deep Resistivity (Ohm-m)	2000
0.2	Medium Resistivity (Ohm-m)	2000
0.2	Shallow Resistivity (Ohm-m)	2000
15000	Line Tension (lb)	0

LSPD  
(ft/min)