



Microresistivity Log

DIGITAL LOG (785) 625-3858

API No.	15-055-22,004-00-00		
Company	Hartman Oil Company, Inc.		
Well	Ward No. 6		
Field	Damme		
County	Finney	State	Kansas
Location	2310' FSL & 2310' FEL		
Sec: 16	Twp: 22S	Rge: 33W	Other Services DIL MEL
Permanent Datum	Ground Level	Elevation 2880	Elevation
Log Measured From	Kelly Bushing	11 Ft. Above Perm. Datum	K.B. 2891
Drilling Measured From	Kelly Bushing		D.F. 2880
			G.L. 2880

Date	10 / 29 / 2008	
Run Number	Two	
Depth Driller	4769	
Depth Logger	4773	
Bottom Logged Interval	4772	
Top Log Interval	3600	
Casing Driller	8.625 @ 355	
Casing Logger	353	
Bit Size	7.875	
Type Fluid in Hole	Chemical	
Salinity, ppm CL	3,600	
Density / Viscosity	9.4	58
pH / Fluid Loss	10.0	9.6
Source of Sample	Flowline	
Rm @ Meas. Temp	.9 @ 74	
Rmf @ Meas. Temp	.68 @ 74	
Rmc @ Meas. Temp	1.22 @ 74	
Source of Rmf / Rmc	Charts	
Rm @ BHT	.54 @ 124	
Operating Rig Time	5 Hours	
Max Rec. Temp. F	124	
Equipment Number	4	
Location	Havs	
Recorded By	K. Bange	
Witnessed By	Wes Hansen	
	J. Loffredi	

<<< Fold Here >>>

All interpretations are opinions based on inferences from electrical or other measurements and we cannot and do not guarantee the accuracy or correctness of any interpretation, and we shall not, except in the case of gross or willful negligence on our part, be liable or responsible for any loss, costs, damages, or expenses incurred or sustained by anyone resulting from any interpretation made by any of our officers, agents or employees. These interpretations are also subject to our general terms and conditions set out in our current Price Schedule.

Comments

Thank you for using Log-Tech, Inc.
(785) 625-3858

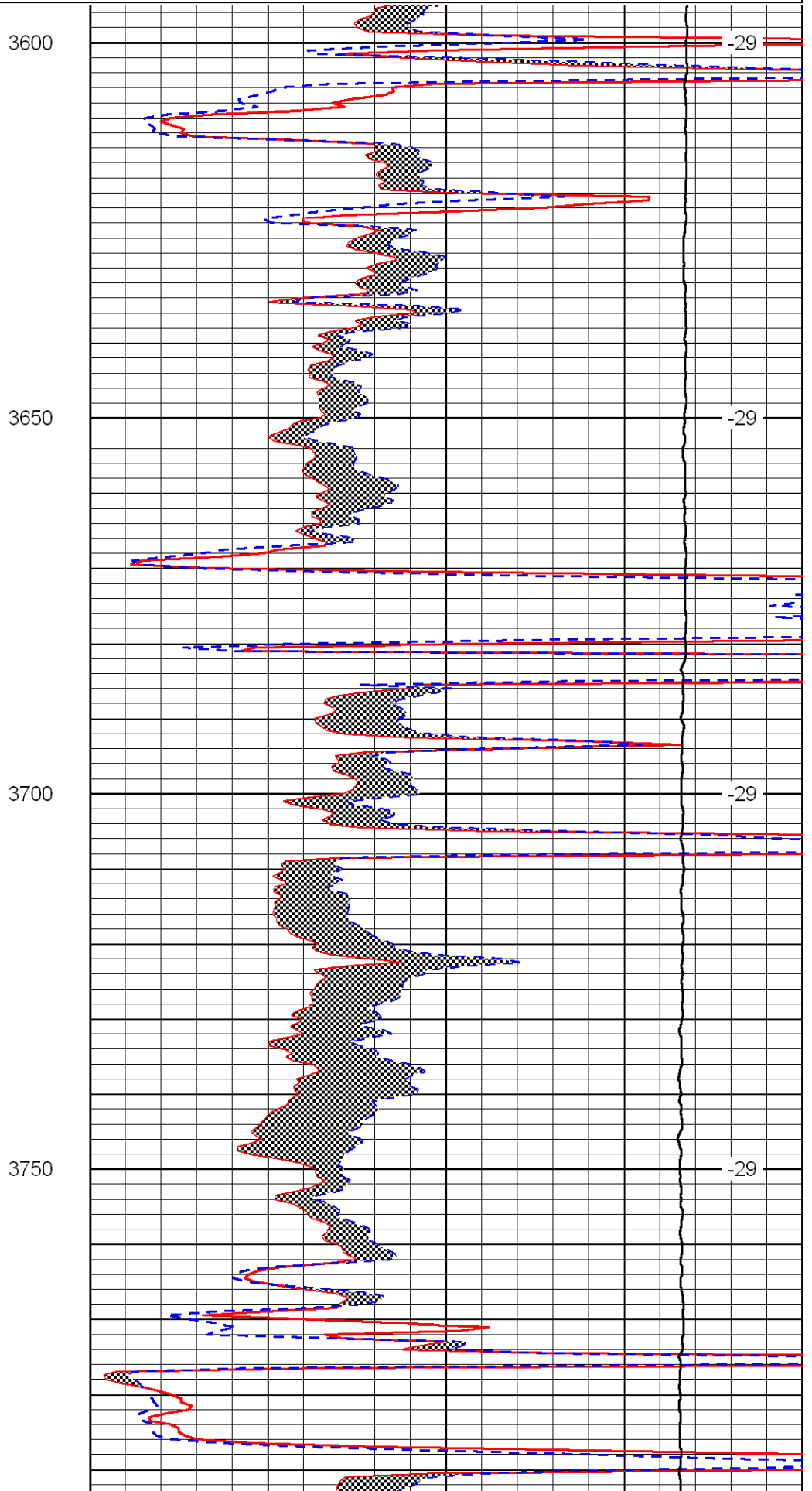
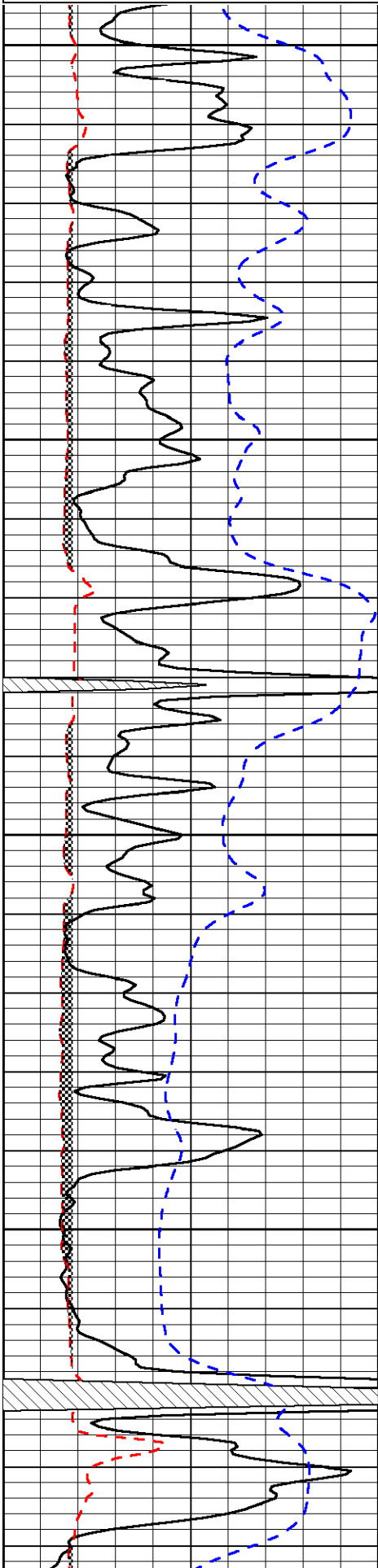
South of Scott City to Scott-Finney Rd,
West to Little Lowe Rd, South to
Barlow Rd, 1 1/2 East, North into

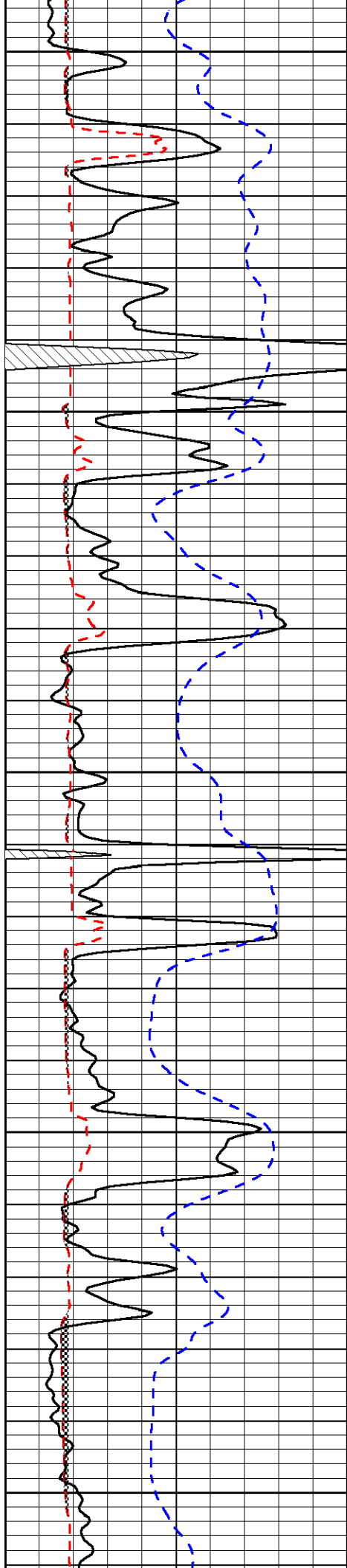
Database File:	c:\warrior\data\hartman_ward no. 6\hartman.db
Dataset Pathname:	dil/hartstk
Presentation Format:	micro
Dataset Creation:	Wed Oct 29 19:35:09 2008
Charted by:	Depth in Feet scaled 1:240

0	Gamma Ray	150
6	Micro Log Caliper (GAPI)	16
-200	SP	0

0	Micro Inverse 1 X 1	40
0	Micro Normal 2"	40
10000	Line Weight	0

LSPD





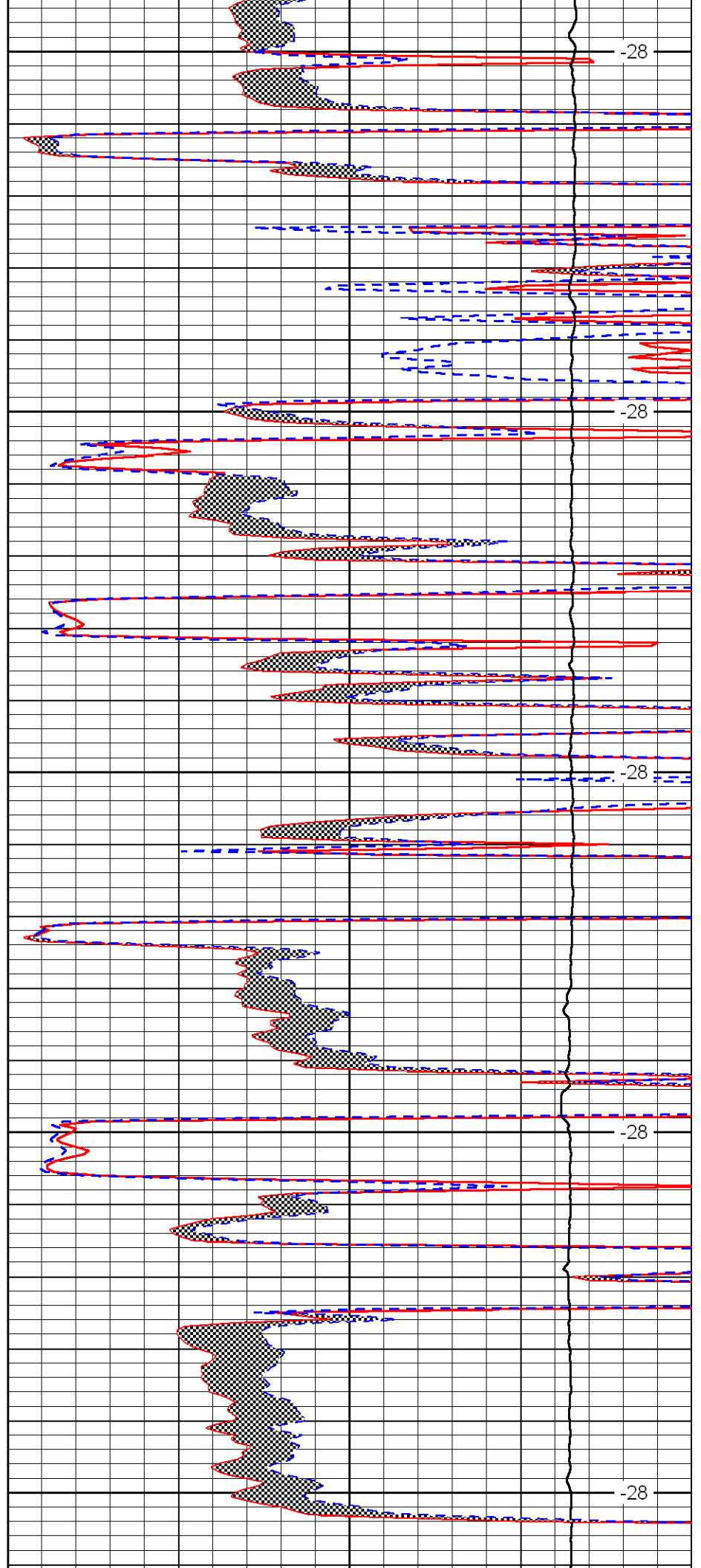
3800

3850

3900

3950

4000



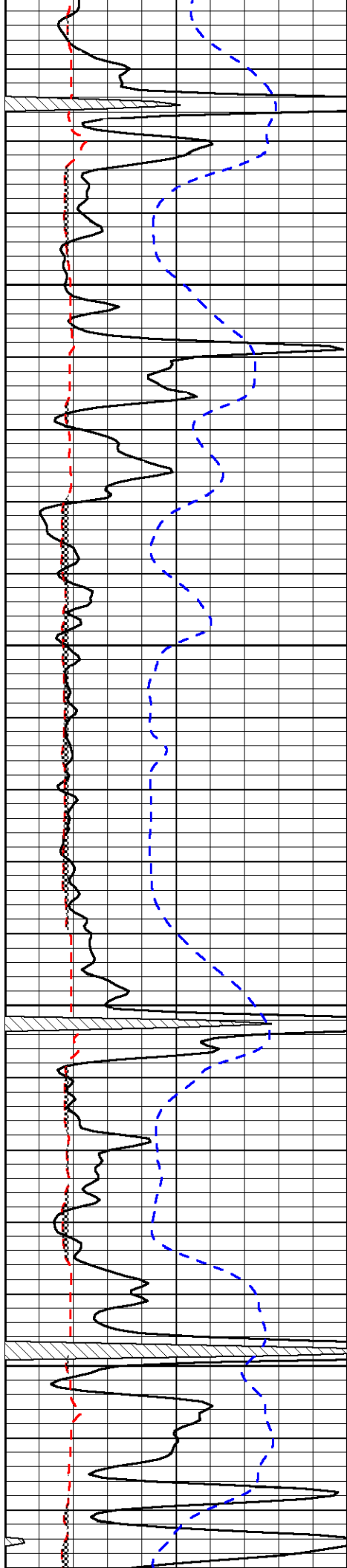
-28

-28

-28

-28

-28

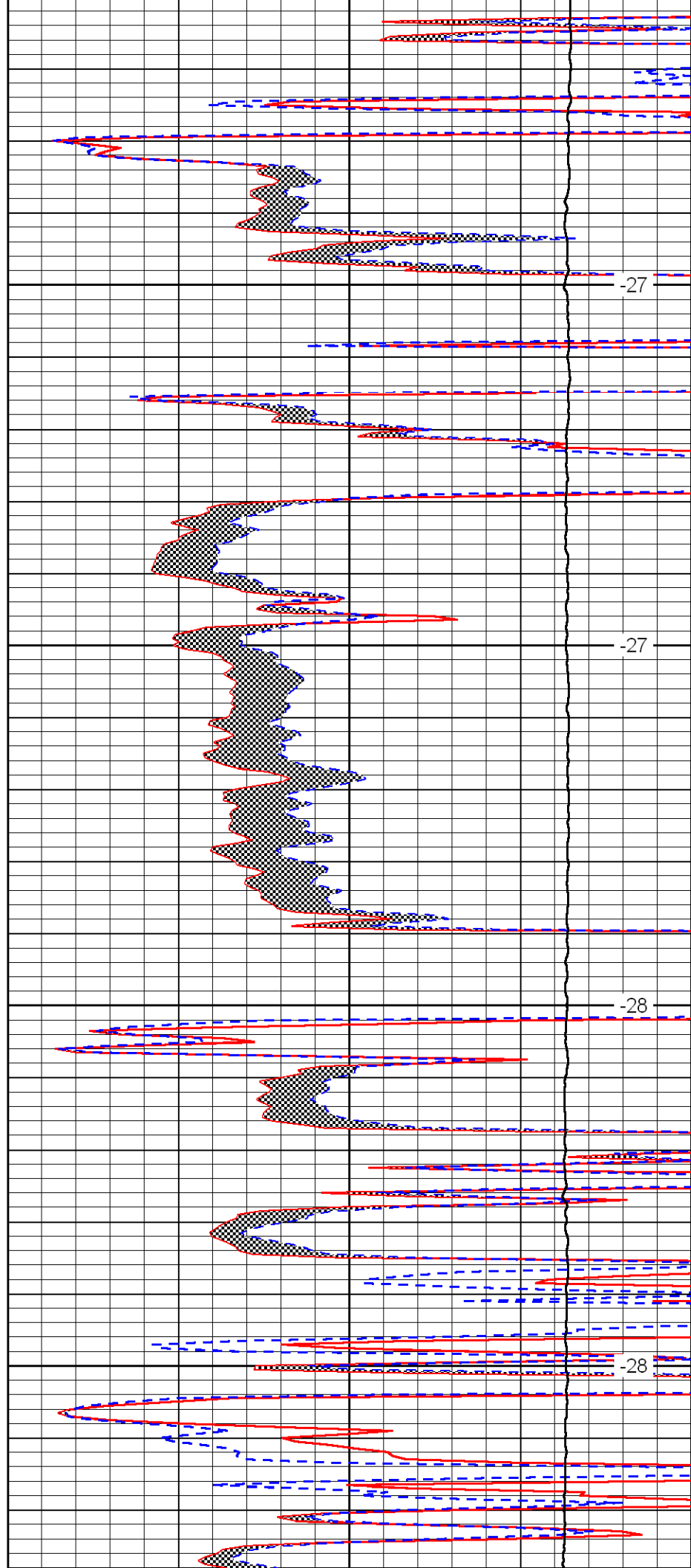


4050

4100

4150

4200

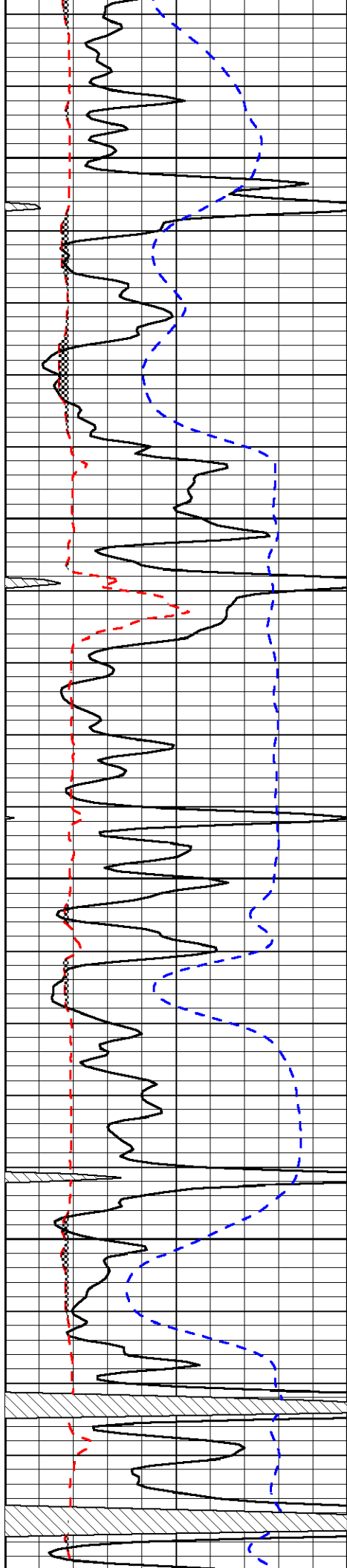


-27

-27

-28

-28

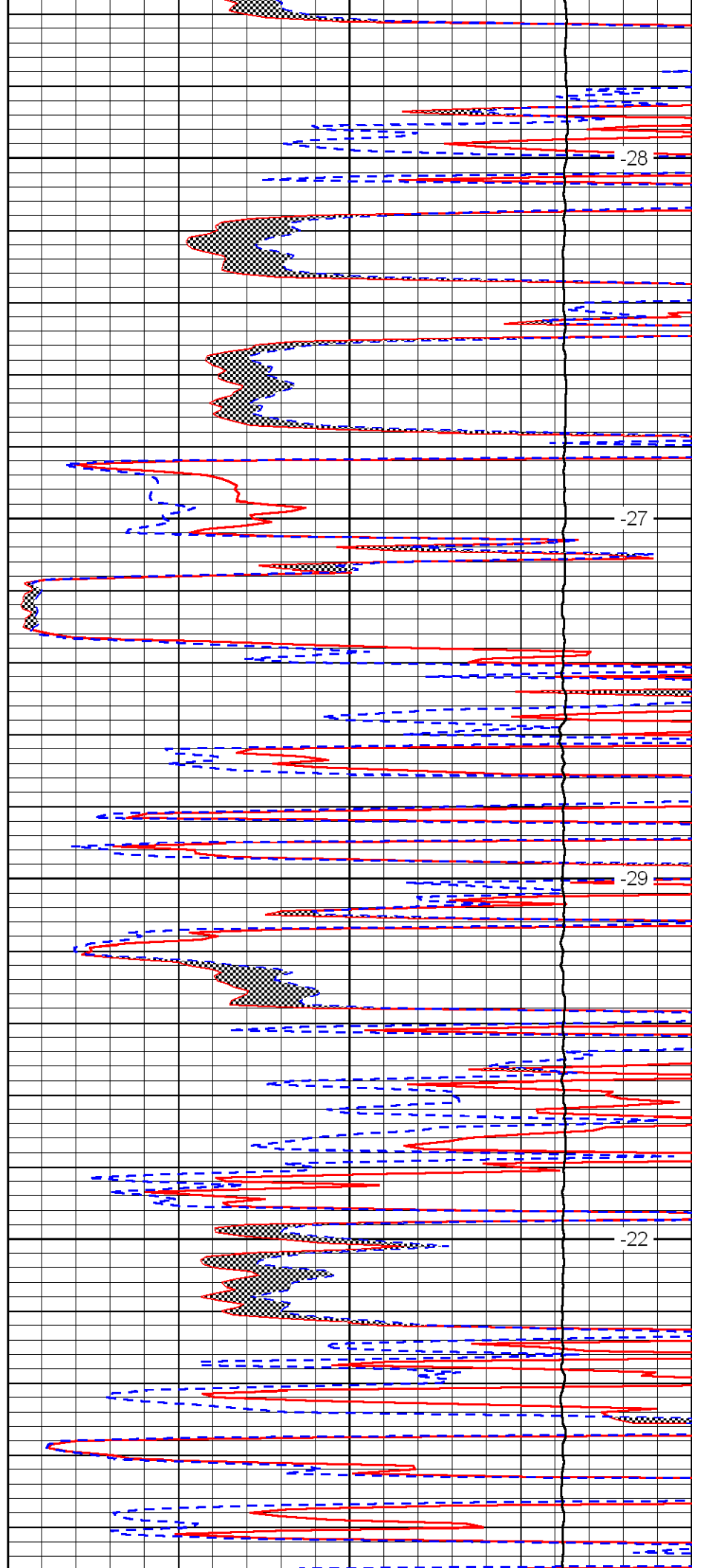


4250

4300

4350

4400

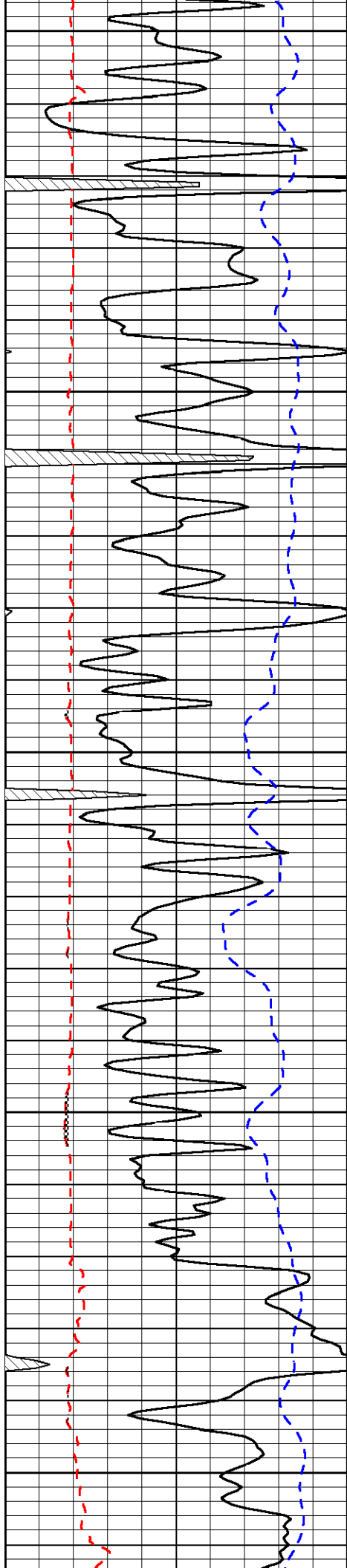


-28

-27

-29

-22



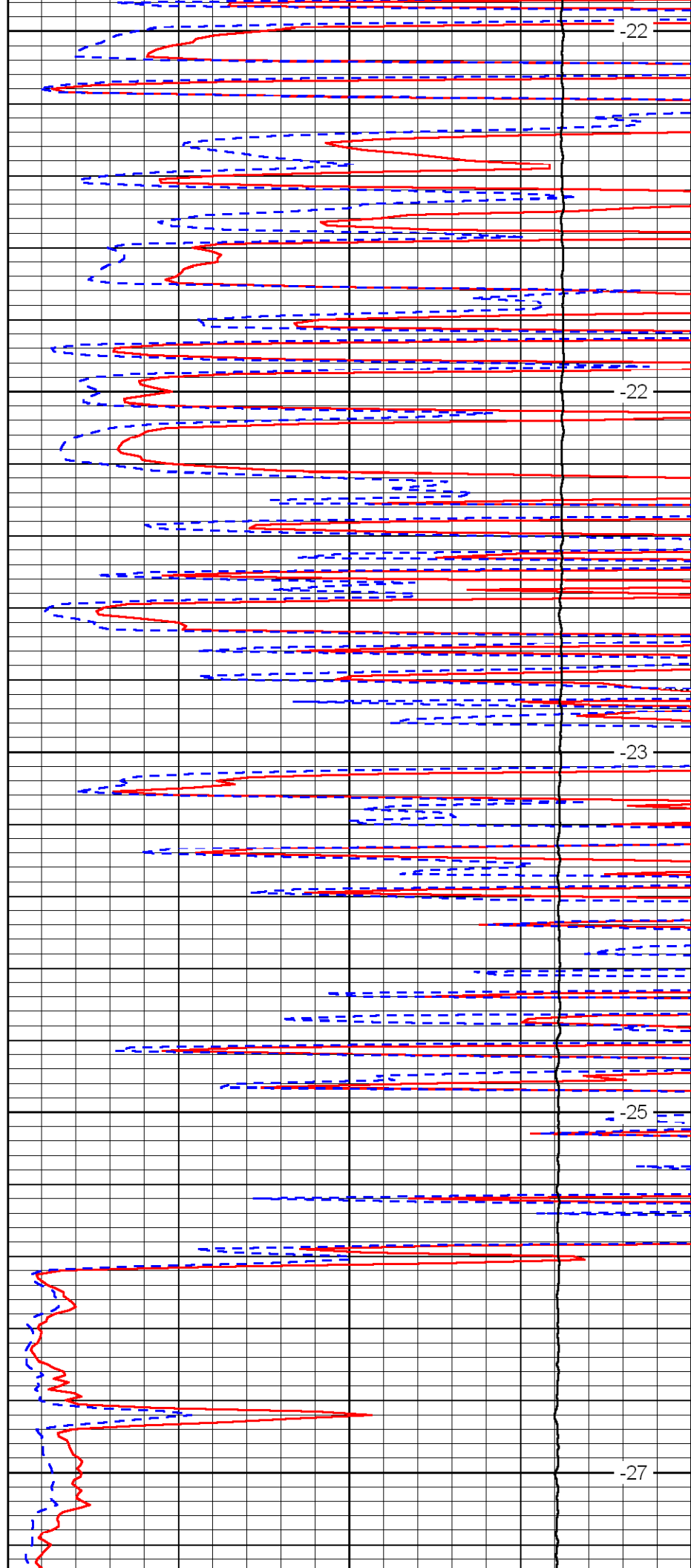
4450

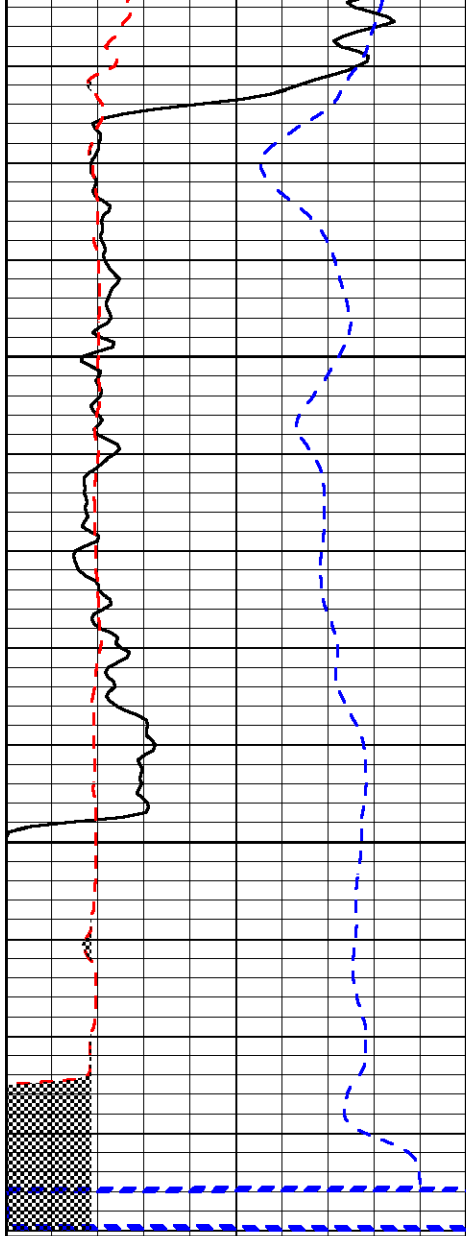
4500

4550

4600

4650

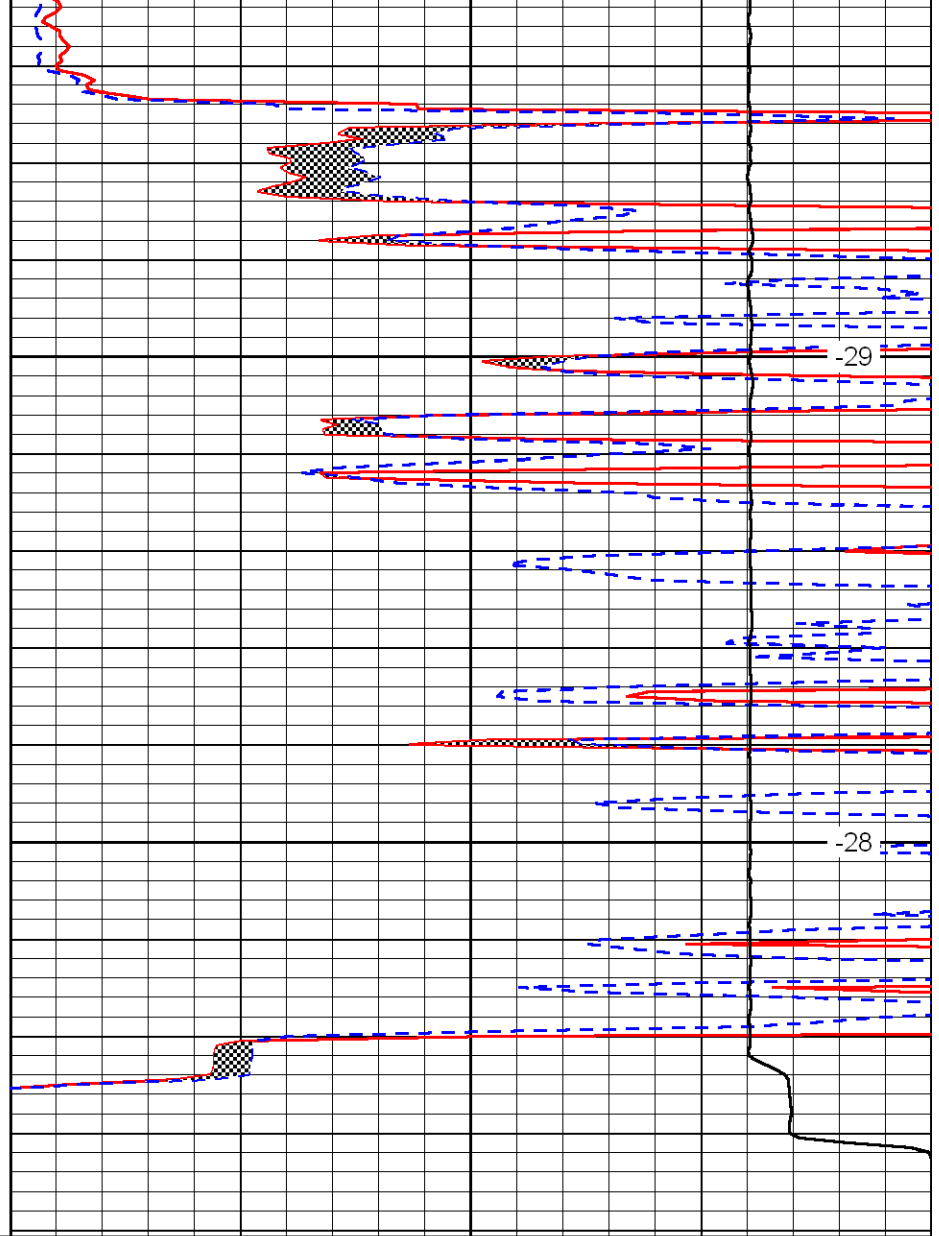




0	Gamma Ray	150
6	Micro Log Caliper (GAPI)	16
-200	SP	0

4700

4750



0	Micro Inverse 1 X 1	40
0	Micro Normal 2''	40
10000	Line Weight	0

LSPD