



Dual Compensated
Porosity Log

DIGITAL LOG (785) 625-3858

| | | | |
|------------------------|---------------------------|--------------------------|------|
| API No. | 15-055-22,004-00-00 | | |
| Company | Hartman Oil Company, Inc. | | |
| Well | Ward No. 6 | | |
| Field | Damme | | |
| County | Finney | | |
| State | Kansas | | |
| Location | 2310' FSL & 2310' FEL | | |
| Sec: | 16 | Twp: | 22S |
| Rge: | 33W | | |
| Permanent Datum | Ground Level | Elevation | 2880 |
| Log Measured From | Kelly Bushing | 11 Ft. Above Perm. Datum | |
| Drilling Measured From | Kelly Bushing | | |
| Date | 10 / 29 / 2008 | | |
| Run Number | One | | |
| Type Log | CNL / CDL | | |
| Depth Driller | 4769 | | |
| Depth Logger | 4773 | | |
| Bottom Logged Interval | 4752 | | |
| Top Logged Interval | 3600 | | |
| Type Fluid In Hole | Chemical | | |
| Salinity, PPM CL | 3,600 | | |
| Density | 9.4 | | |
| Level | Full | | |
| Max. Rec. Temp. F | 124 | | |
| Operating Rig Time | 5 Hours | | |
| Equipment -- Location | 4 Hays | | |
| Recorded By | K. Bange | | |
| Witnessed By | J. Loffredi | | |
| Recorded By | Wes Hansen | | |

| | | | |
|----------------|-----|-----------|------|
| Other Services | DIL | Elevation | 2891 |
| | MEL | D.F. | 2880 |
| | | G.L. | 2880 |

| | | | | | | | |
|--------|-------|------|------|-------|------|------|-----|
| Run No | Bit | From | To | Size | Wgt. | From | To |
| 1 | 12.25 | 00 | 355 | 8.625 | 24# | 00 | 355 |
| 2 | 7.875 | 355 | 4769 | | | | |
| | | | | | | | |
| | | | | | | | |
| | | | | | | | |
| | | | | | | | |
| | | | | | | | |
| | | | | | | | |
| | | | | | | | |

15-055-22,004-00-00

Company Hartman Oil Company, Inc.

Well Ward No. 6

Field Damme

County Finney

State Kansas

Location 2310' FSL & 2310' FEL

Sec: 16 Twp: 22S Rge: 33W

Permanent Datum Ground Level Elevation 2880

Log Measured From Kelly Bushing 11 Ft. Above Perm. Datum

Drilling Measured From Kelly Bushing

Date 10 / 29 / 2008

Run Number One

Type Log CNL / CDL

Depth Driller 4769

Depth Logger 4773

Bottom Logged Interval 4752

Top Logged Interval 3600

Type Fluid In Hole Chemical

Salinity, PPM CL 3,600

Density 9.4

Level Full

Max. Rec. Temp. F 124

Operating Rig Time 5 Hours

Equipment -- Location 4 Hays

Recorded By K. Bange

Witnessed By J. Loffredi

Recorded By Wes Hansen

<<< Fold Here >>>

All interpretations are opinions based on inferences from electrical or other measurements and we cannot and do not guarantee the accuracy or correctness of any interpretation, and we shall not, except in the case of gross or willful negligence on our part, be liable or responsible for any loss, costs, damages, or expenses incurred or sustained by anyone resulting from any interpretation made by any of our officers, agents or employees. These interpretations are also subject to our general terms and conditions set out in our current Price Schedule.

Comments

Thank you for using Log-Tech, Inc.
(785) 625-3858

South of Scott City to Scott-Finney Rd,
West to Little Lowe Rd, South to
Barlow Rd, 1 1/2 East, North into

Database File: c:\warrior\data\hartman_ward no. 6\hartman.db

Dataset Pathname: dil/hartstk

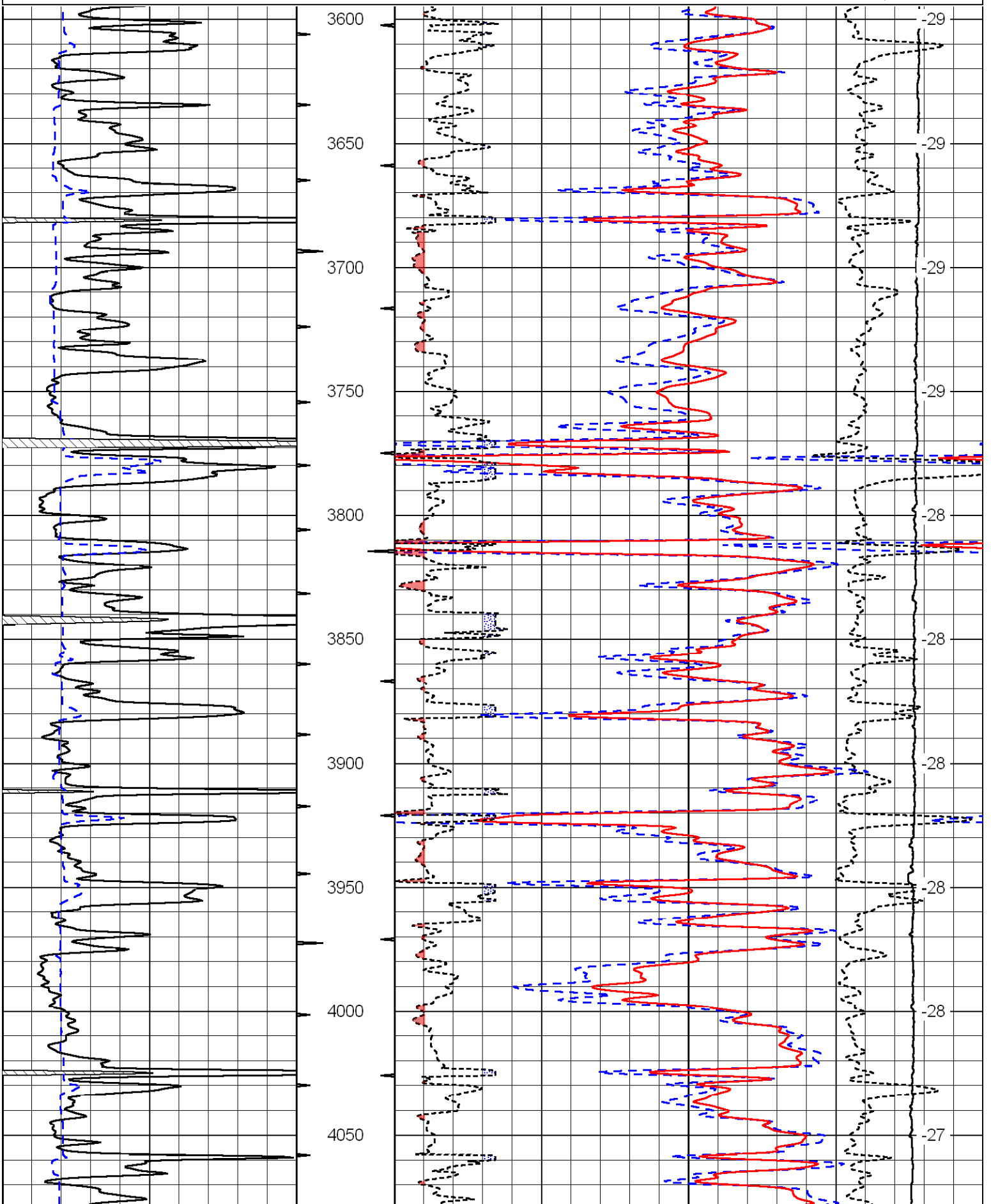
Presentation Format: cdl

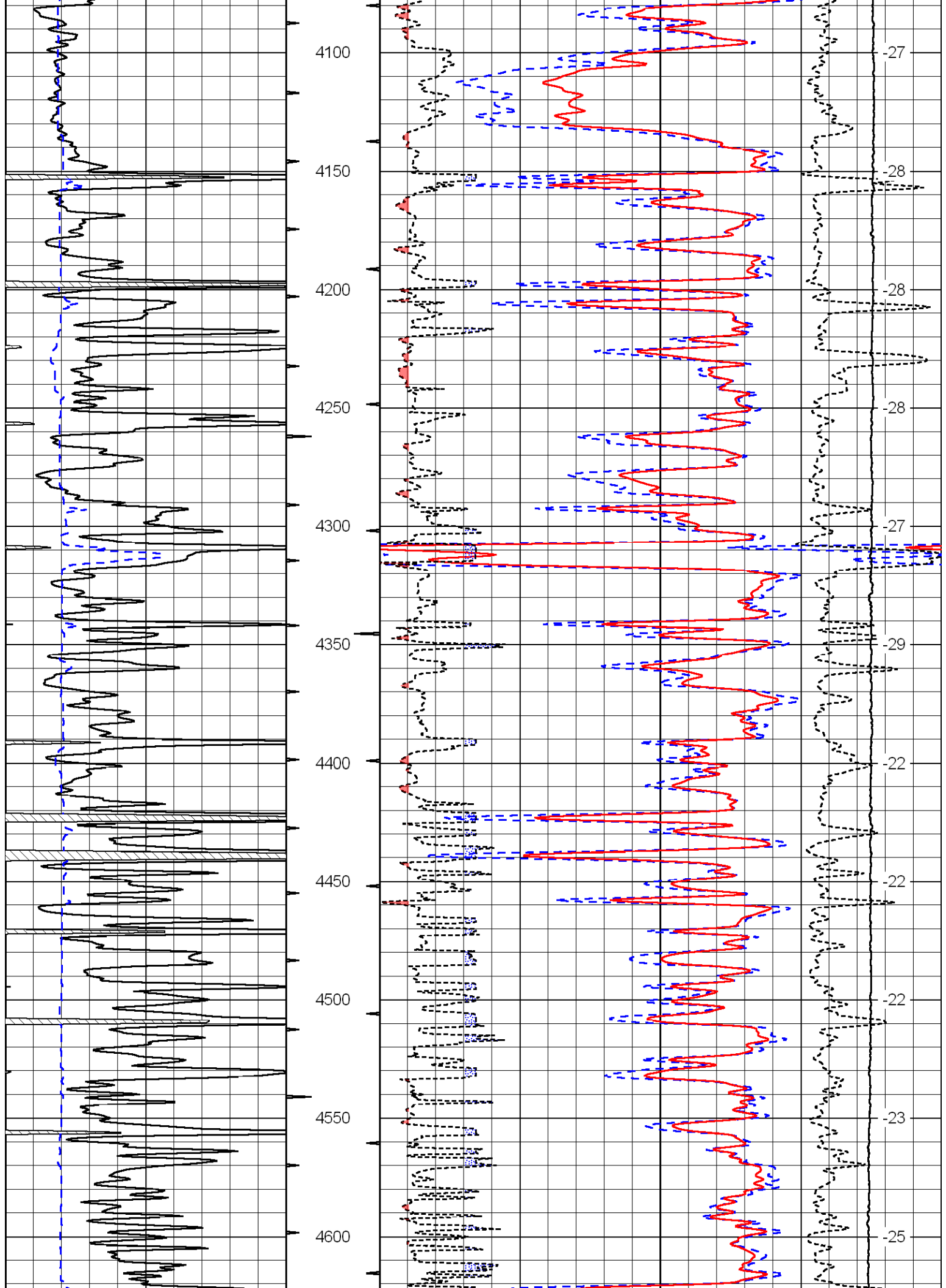
Dataset Creation: Wed Oct 29 19:35:09 2008

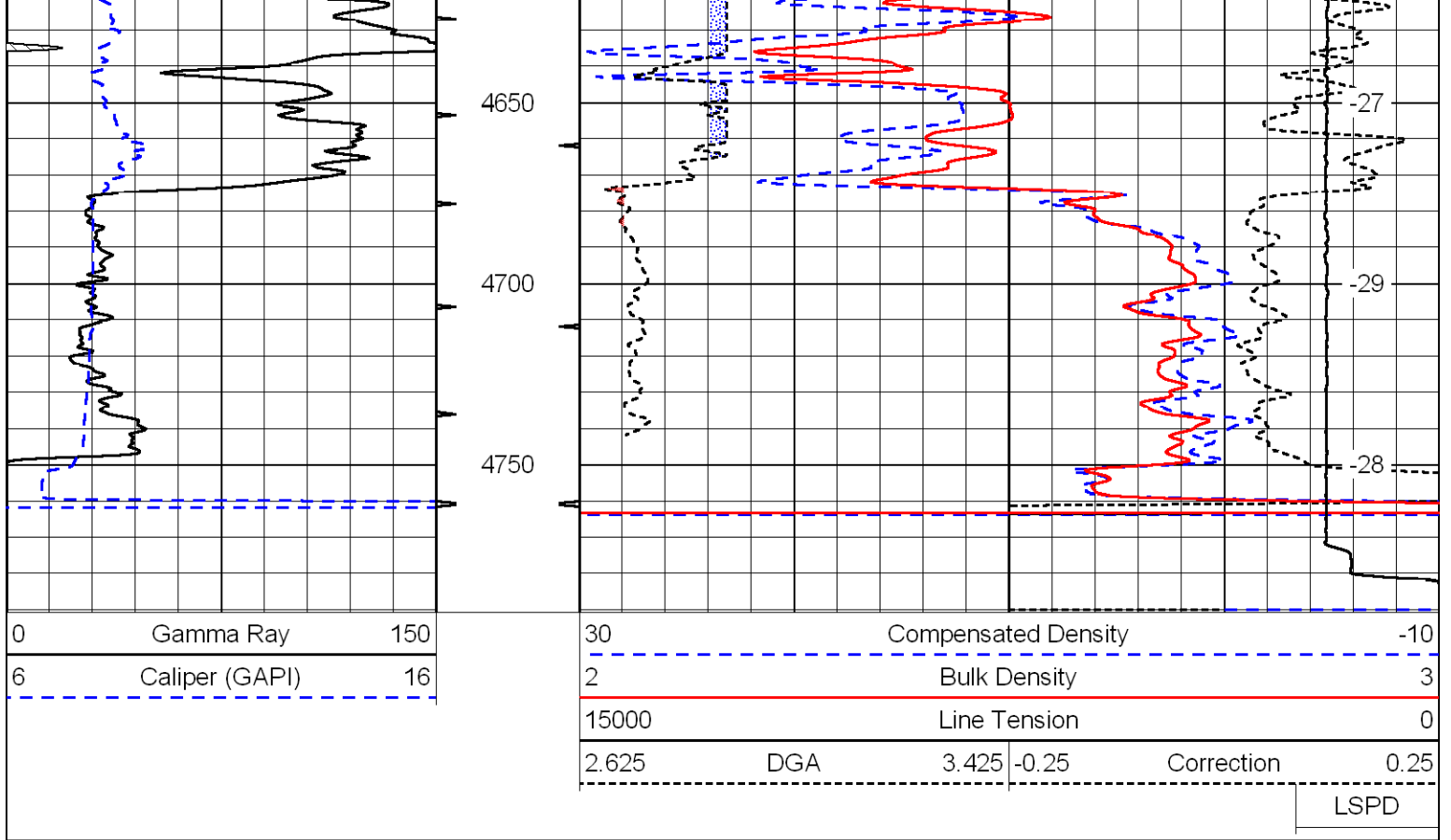
Charted by: Depth in Feet scaled 1:600

| | | |
|---|----------------|-----|
| 0 | Gamma Ray | 150 |
| 6 | Caliper (GAPI) | 16 |

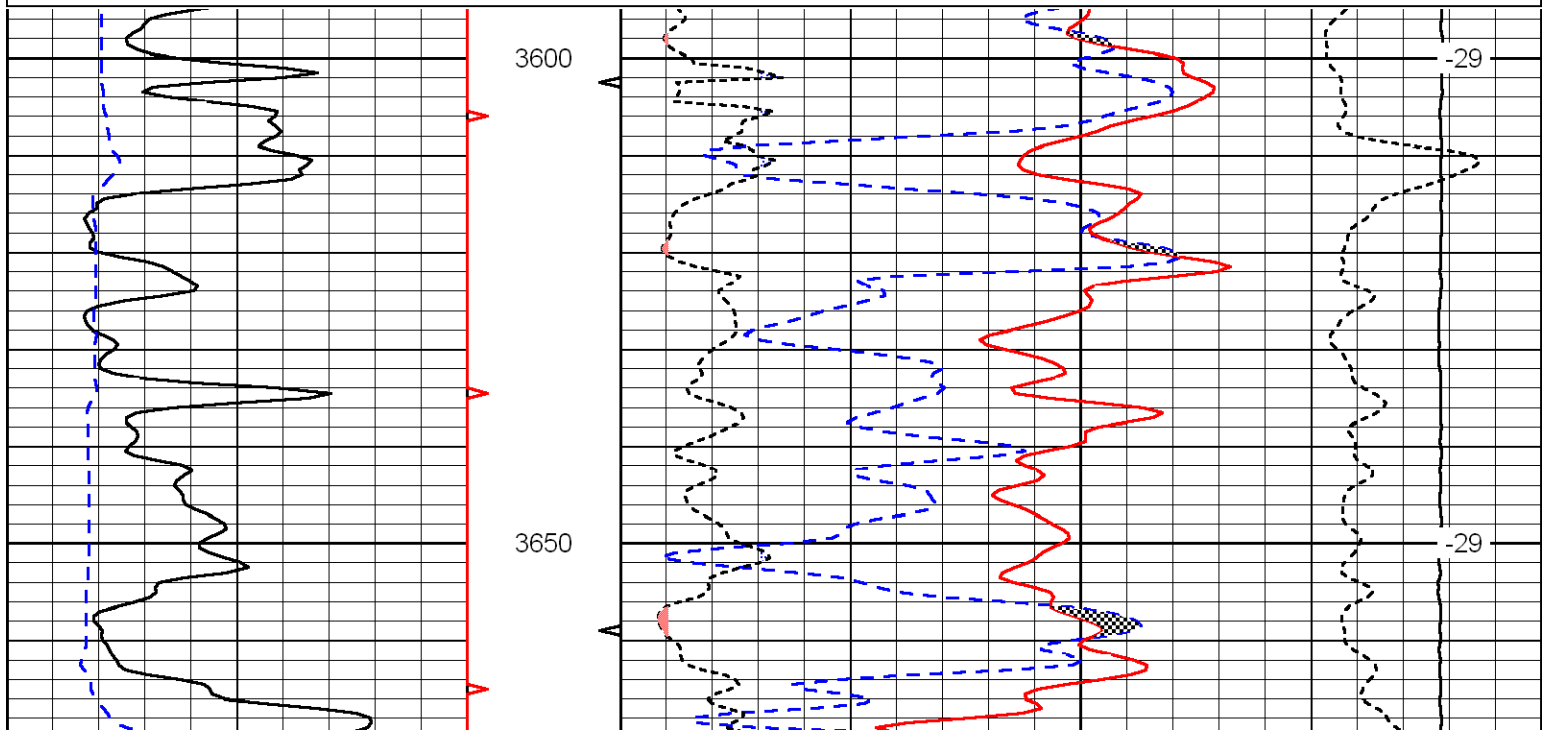
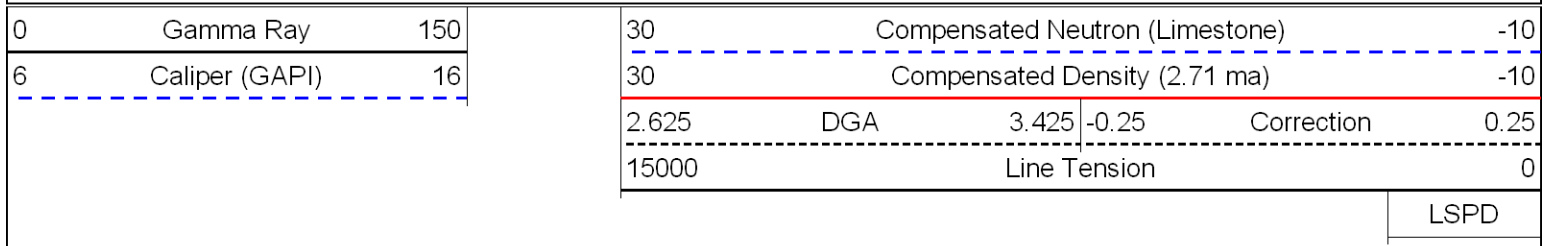
| | | | |
|------------|---------------------|-------|-------|
| 30 | Compensated Density | | -10 |
| 2 | Bulk Density | | 3 |
| 15000 | Line Tension | | 0 |
| 2.625 | DGA | 3.425 | -0.25 |
| Correction | | | 0.25 |
| LSPD | | | |

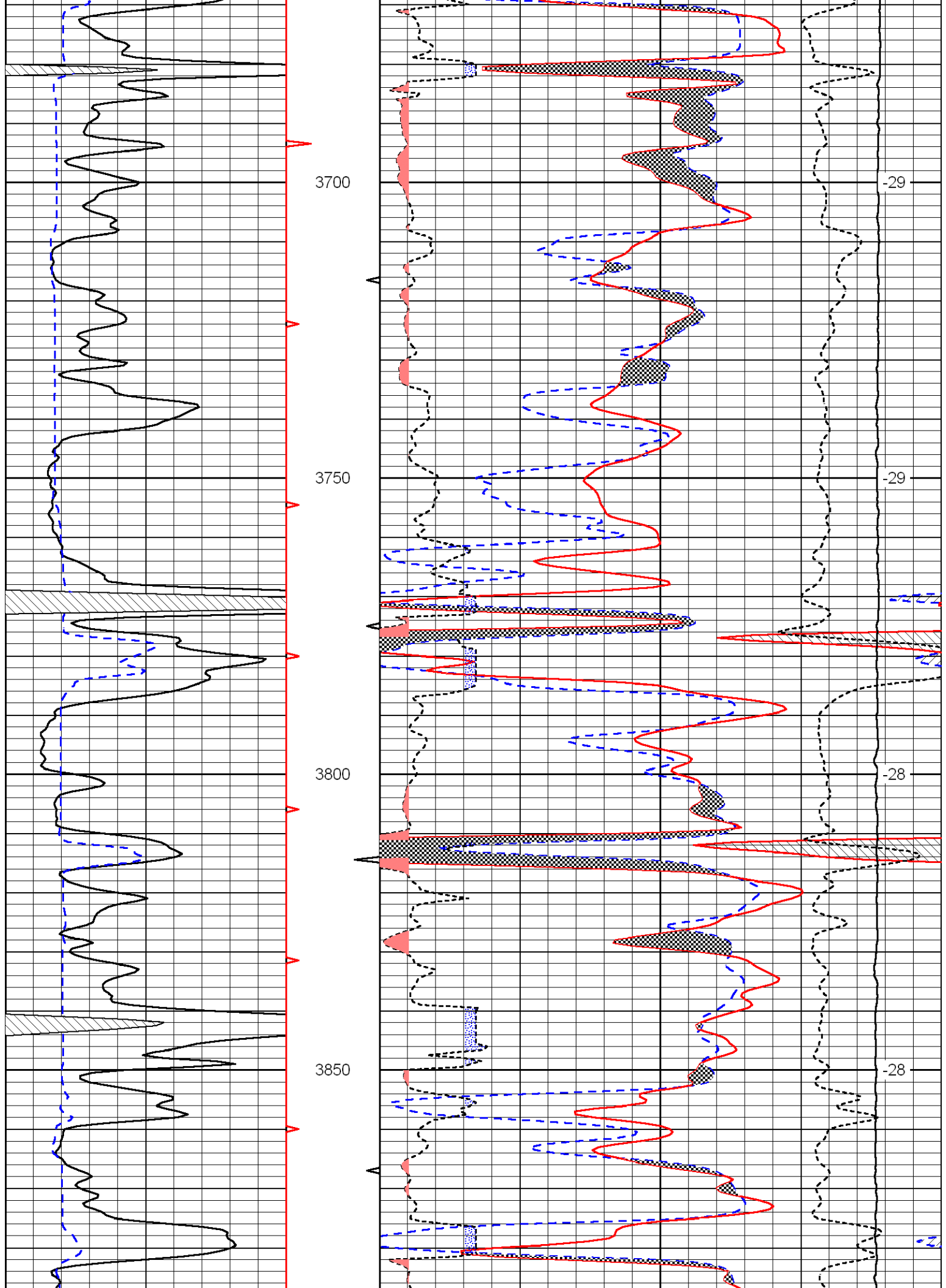


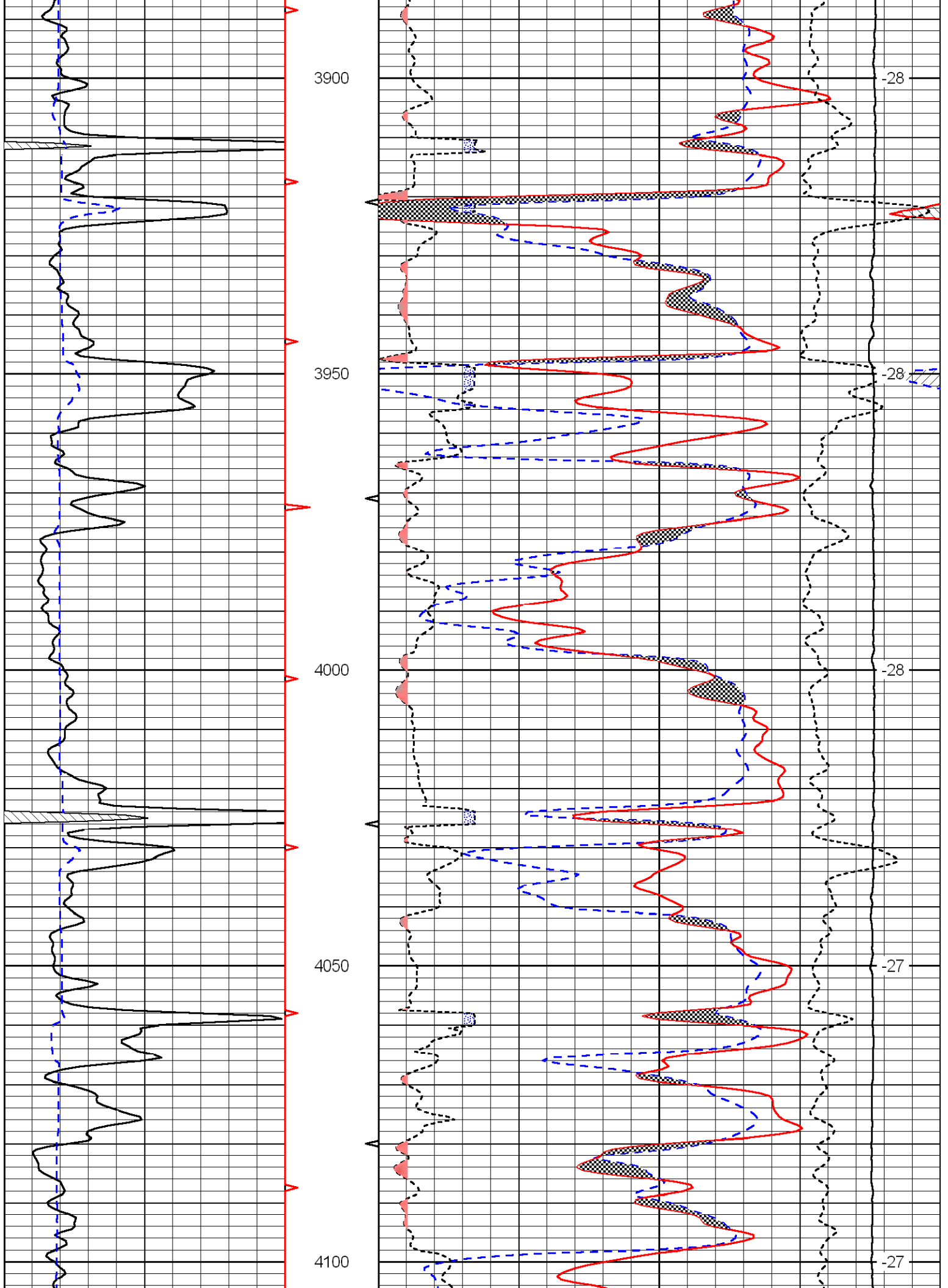


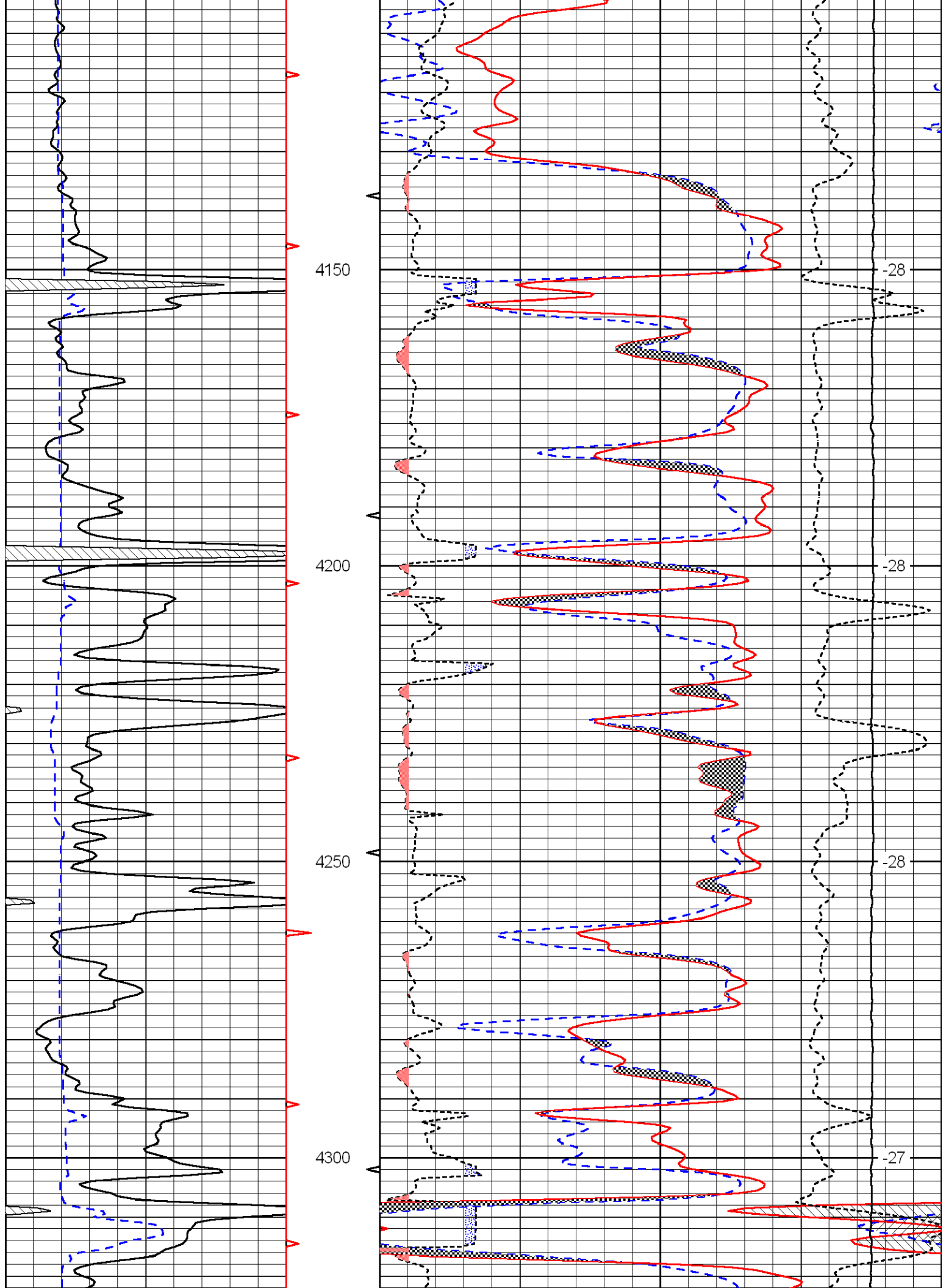


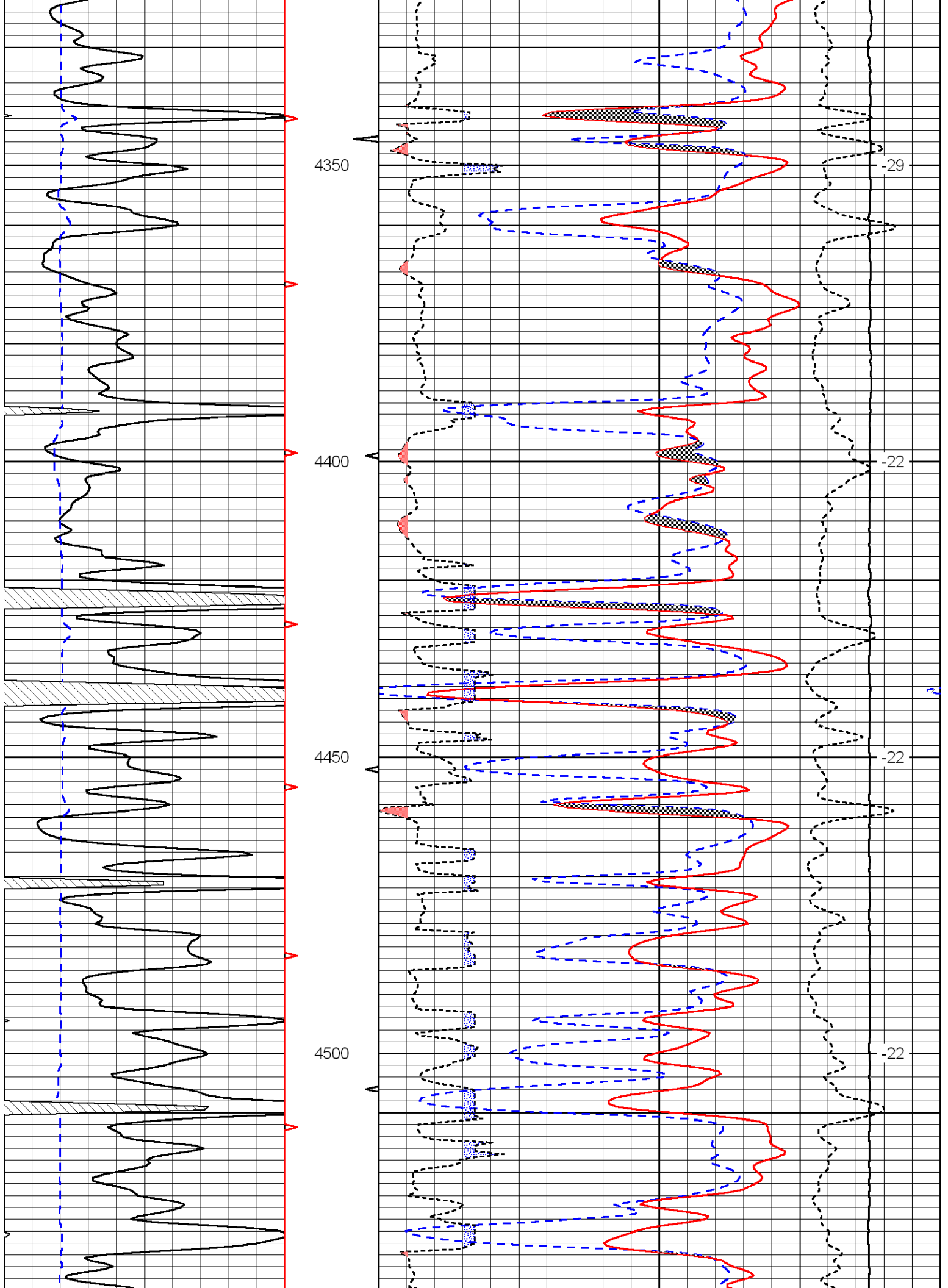
Database File: c:\warrior\data\hartman_ward no. 6\hartman.db
 Dataset Pathname: dil/hartstk
 Presentation Format: cndlspec
 Dataset Creation: Wed Oct 29 19:35:09 2008
 Charted by: Depth in Feet scaled 1:240

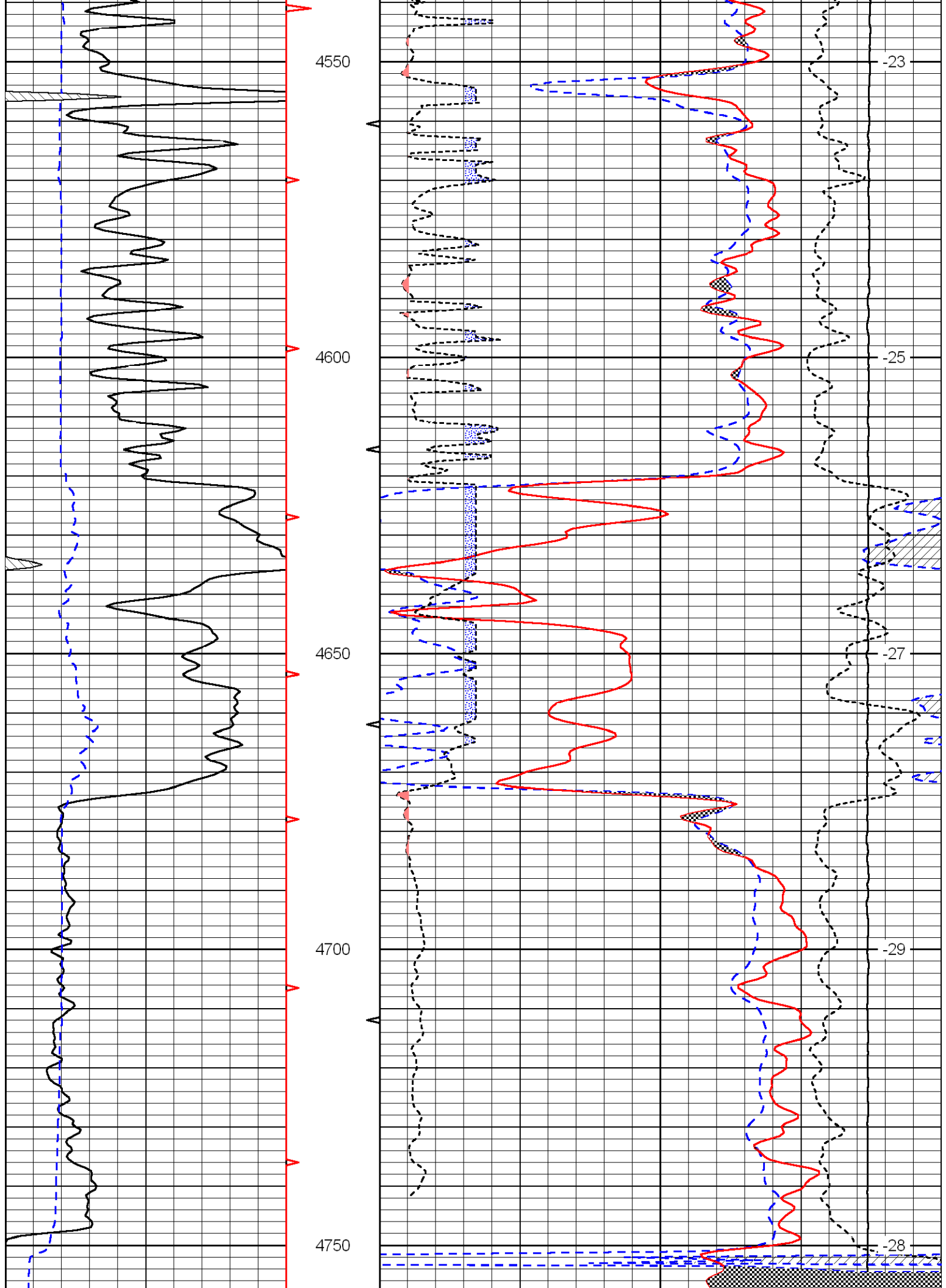


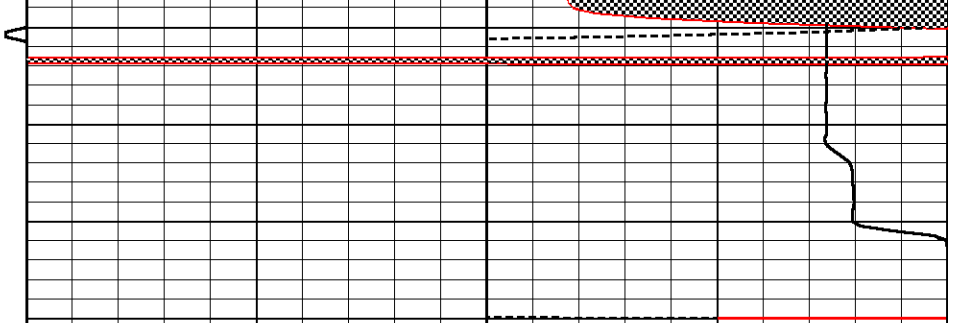
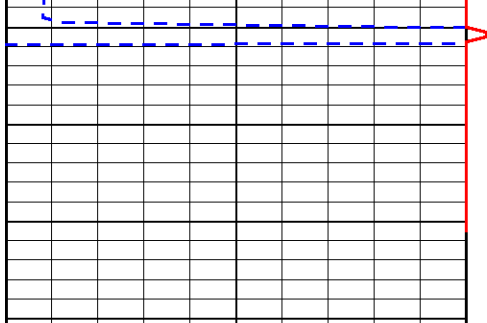












| | | |
|---|-----------|-----|
| 0 | Gamma Ray | 150 |
|---|-----------|-----|

| | | |
|---|----------------|----|
| 6 | Caliper (GAPI) | 16 |
|---|----------------|----|

| | | |
|----|---------------------------------|-----|
| 30 | Compensated Neutron (Limestone) | -10 |
|----|---------------------------------|-----|

| | | |
|----|-------------------------------|-----|
| 30 | Compensated Density (2.71 ma) | -10 |
|----|-------------------------------|-----|

| | | | | | |
|-------|-----|-------|-------|------------|------|
| 2.625 | DGA | 3.425 | -0.25 | Correction | 0.25 |
|-------|-----|-------|-------|------------|------|

| | | |
|-------|--------------|---|
| 15000 | Line Tension | 0 |
|-------|--------------|---|

| |
|------|
| LSPD |
|------|