



Dual Induction Log

DIGITAL LOG (785) 625-3858

API No.

15-055-22,004-00-00

Company **Hartman Oil Company, Inc.**

Well **Ward No. 6**

Field **Damme**

County **Finney**

State

Kansas

Location
2310' FSL & 2310' FEL

Sec: **16** Twp: **22S** Rge: **33W**

Permanent Datum **Ground Level** Elevation **2880**
 Log Measured From **Kelly Bushing** 11 Ft. Above Perm. Datum
 Drilling Measured From **Kelly Bushing**

Other Services
CNL / CDL
MEL
Elevation
K.B. 2891
D.F. 2880
G.L. 2880

Date	10 / 29 / 2008
Run Number	One
Depth Driller	4769
Depth Logger	4773
Bottom Logged Interval	4772
Top Log Interval	350
Casing Driller	8.625 @ 355
Casing Logger	353
Bit Size	7.875
Type Fluid in Hole	Chemical
Salinity, ppm CL	3.600
Density / Viscosity	9.4 58
pH / Fluid Loss	10.0 9.6
Source of Sample	Flowline
Rm @ Meas. Temp	.9 @ 74
Rmf @ Meas. Temp	.68 @ 74
Rmc @ Meas. Temp	1.22 @ 74
Source of Rmf / Rmc	Charts
Rm @ BHT	.54 @ 124
Operating Rig Time	5 Hours
Max Rec. Temp. F	124
Equipment Number	4
Location	Havs
Recorded By	K. Bange
Witnessed By	J. Loffredi
	Wes Hansen

<<< Fold Here >>>

All interpretations are opinions based on inferences from electrical or other measurements and we cannot and do not guarantee the accuracy or correctness of any interpretation, and we shall not, except in the case of gross or willful negligence on our part, be liable or responsible for any loss, costs, damages, or expenses incurred or sustained by anyone resulting from any interpretation made by any of our officers, agents or employees. These interpretations are also subject to our general terms and conditions set out in our current Price Schedule.

Comments

Thank you for using Log-Tech, Inc.
 (785) 625-3858

South of Scott City to Scott-Finney Rd,
 West to Little Lowe Rd, South to
 Barlow Rd, 1 1/2 East, North into

Database File: c:\warrior\data\hartman_ward no. 6\hartman.db
 Dataset Pathname: dil\hartstk
 Presentation Format: dil2in
 Dataset Creation: Wed Oct 29 19:35:09 2008
 Charted by: Depth in Feet scaled 1:600

0 Gamma Ray 150
-200 SP 0

0 Shallow Resistivity 50
0 Deep Resistivity 50

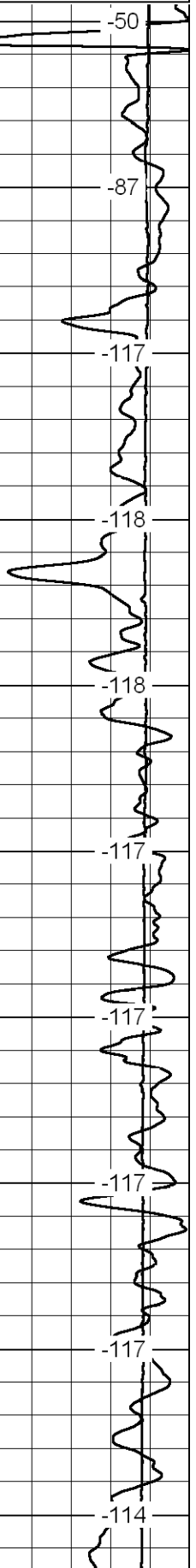
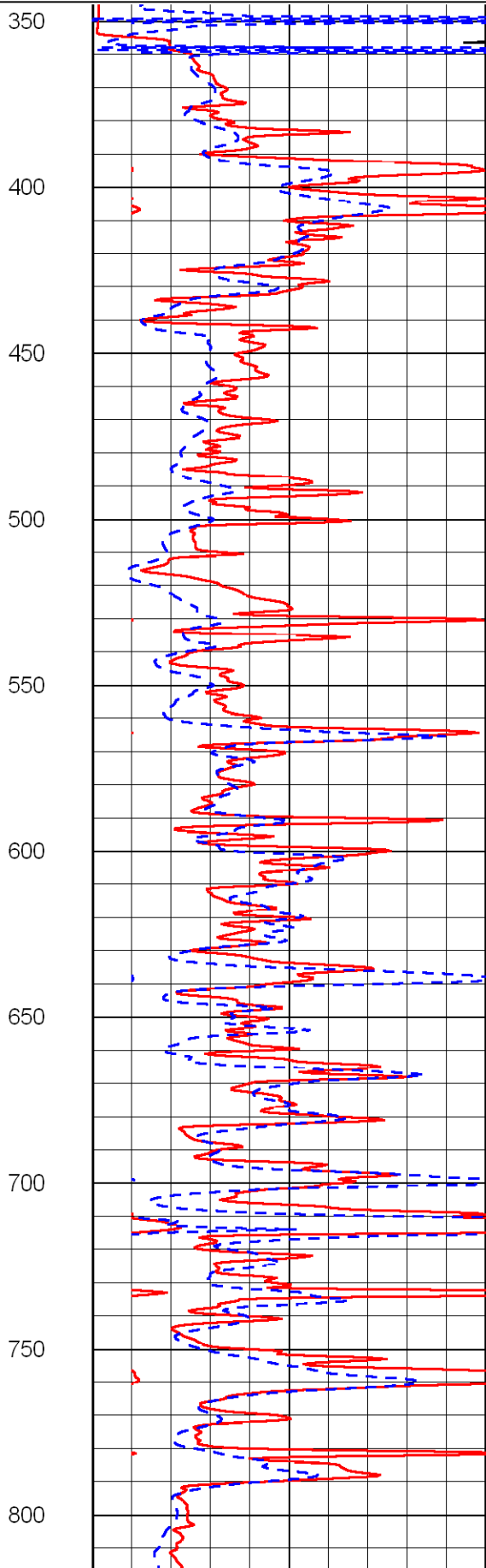
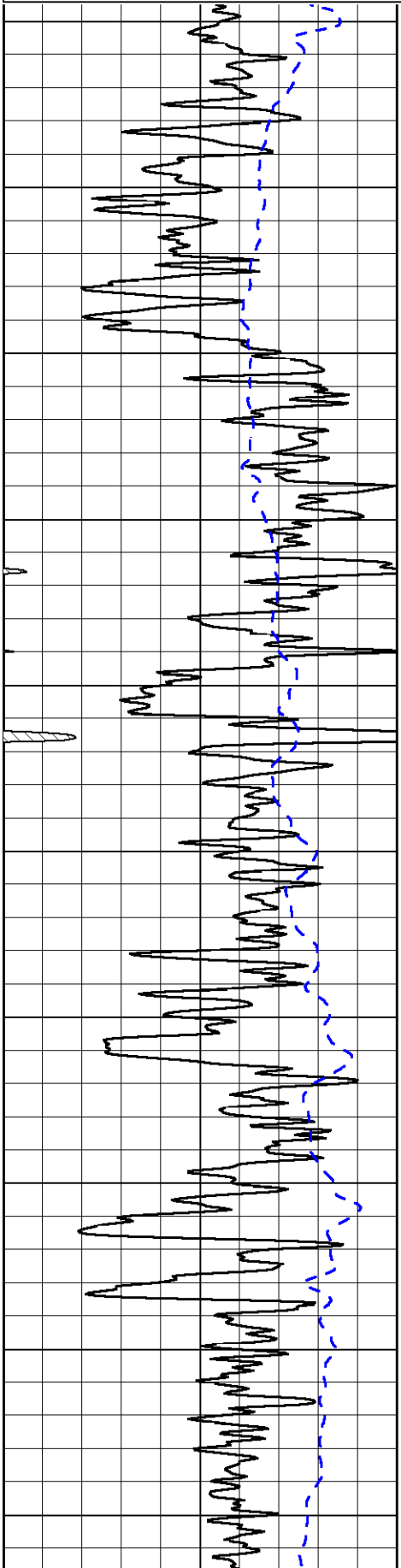
LSPD

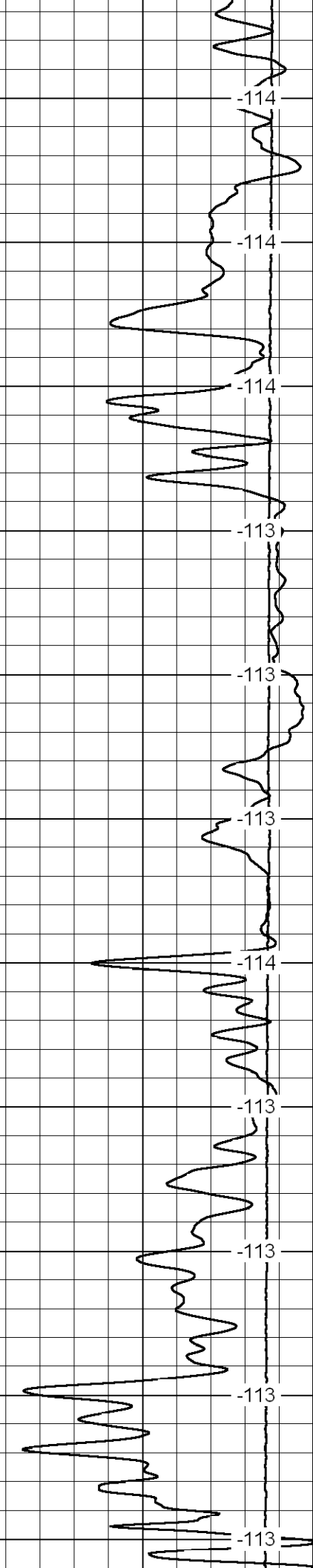
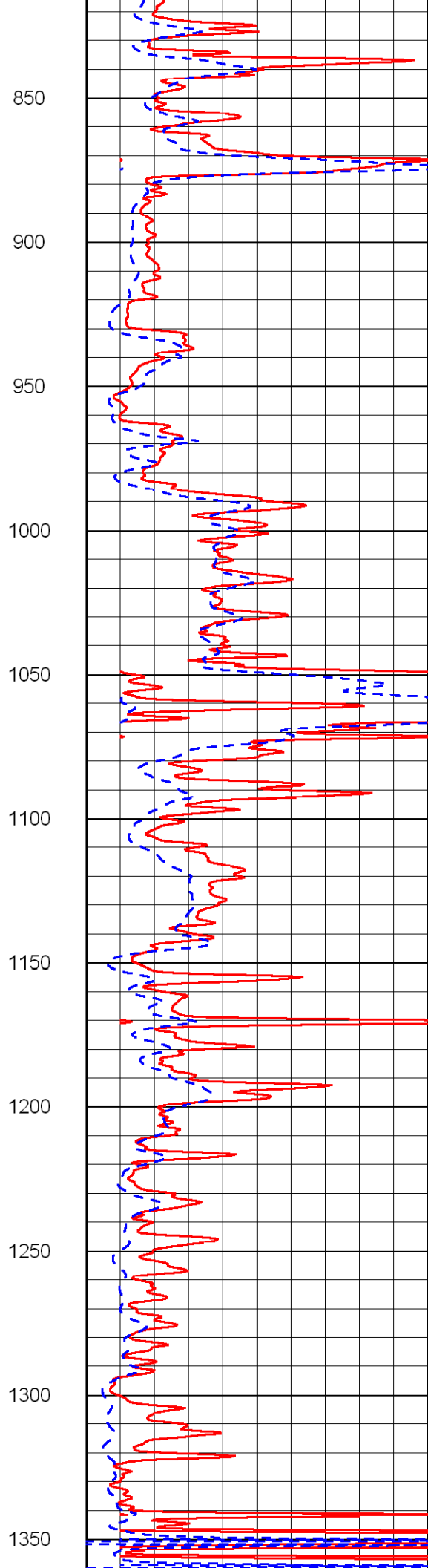
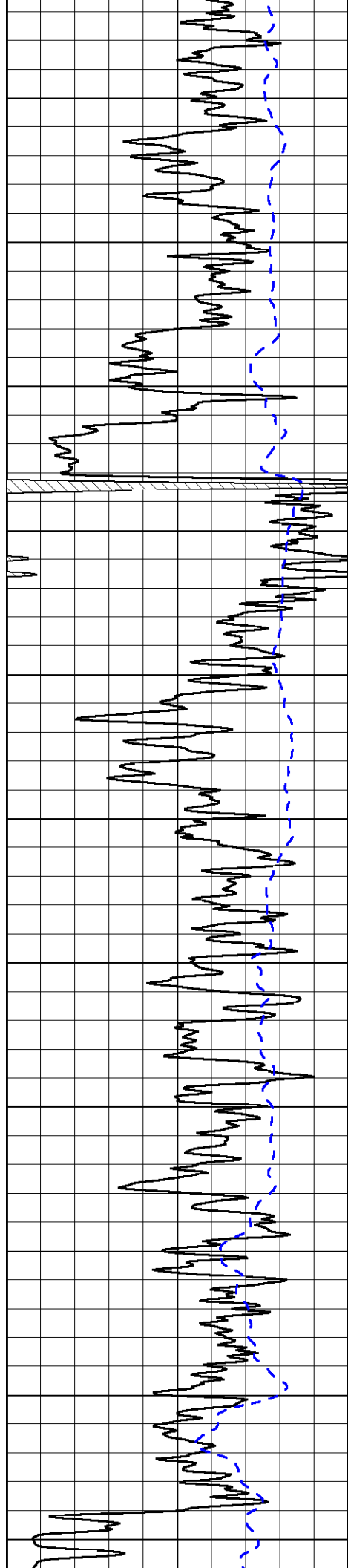
1000 Conductivity 0

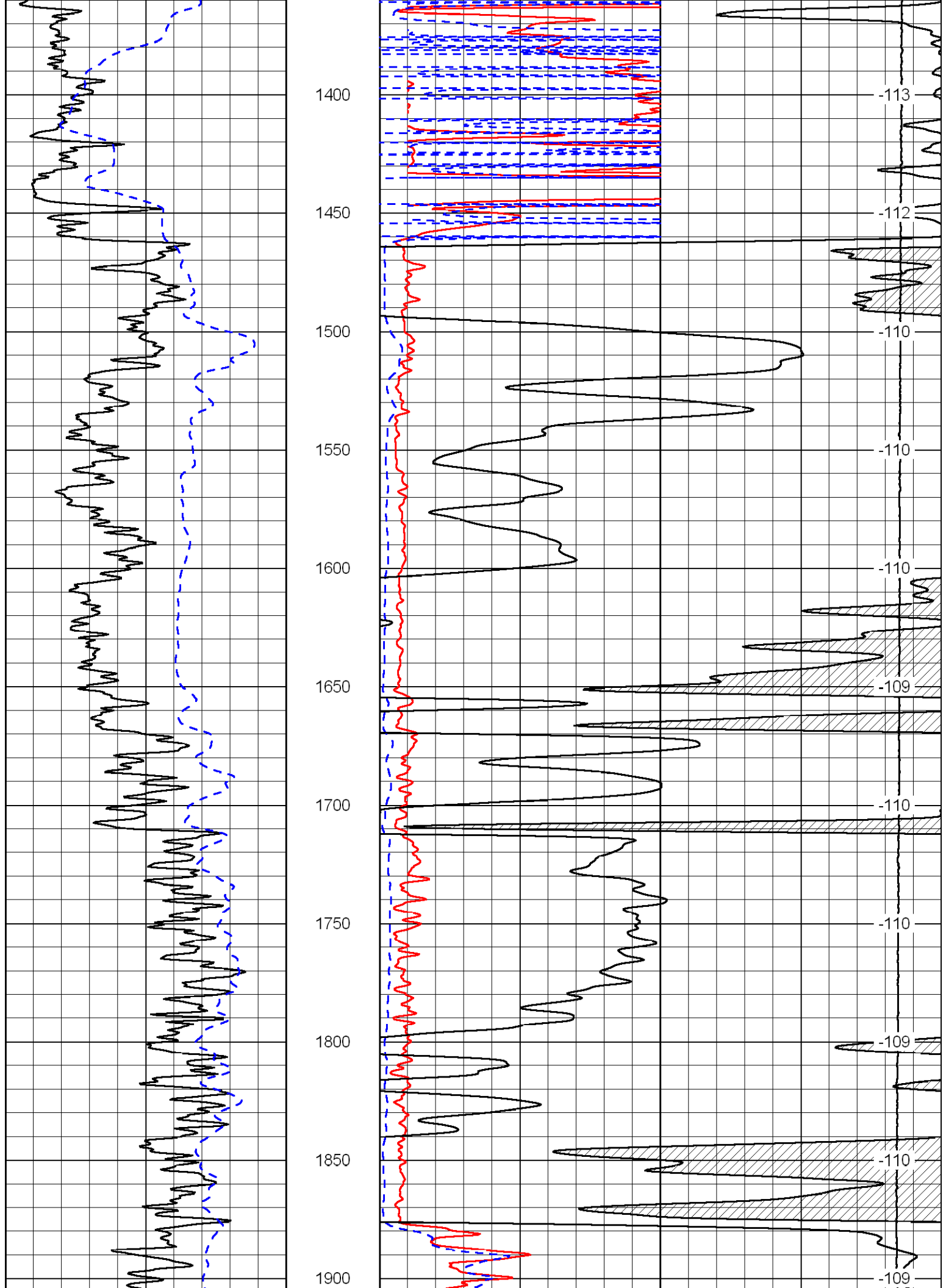
15000 Line Tension 0

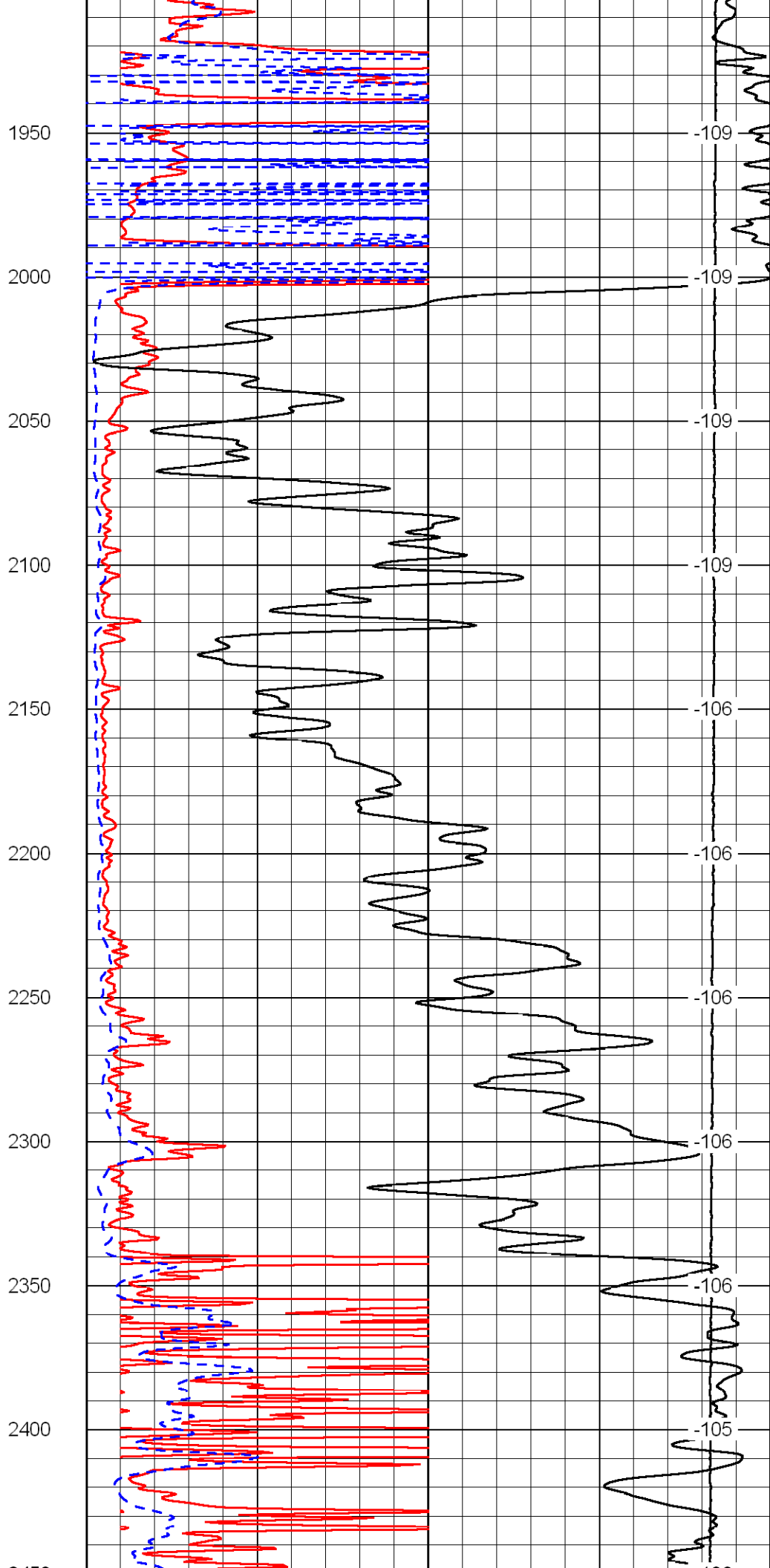
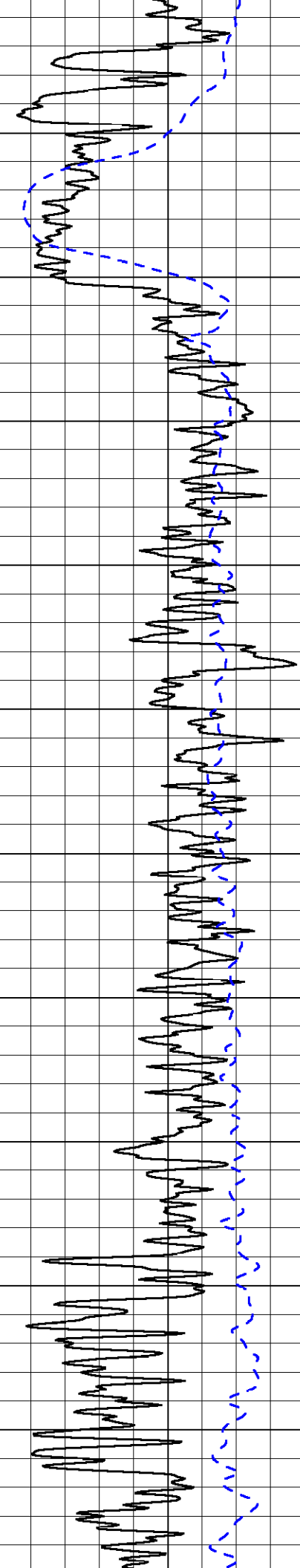
50 Shallow Resistivity 500

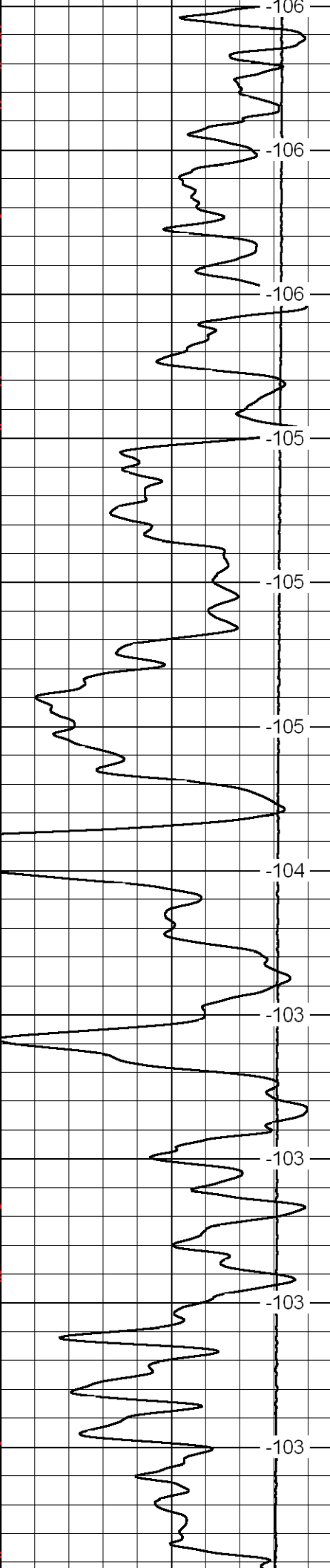
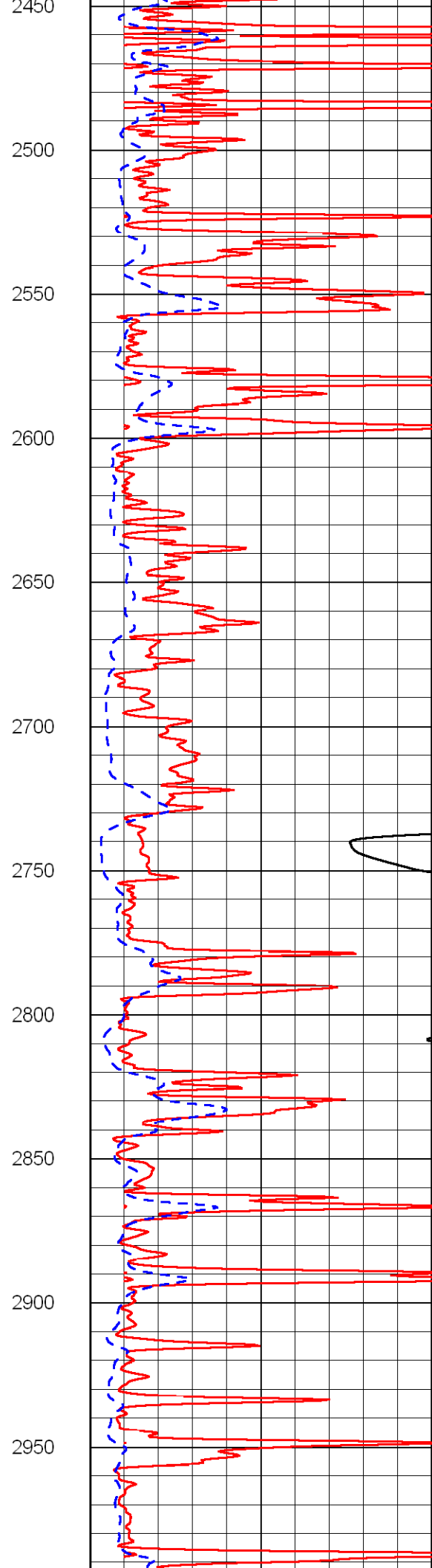
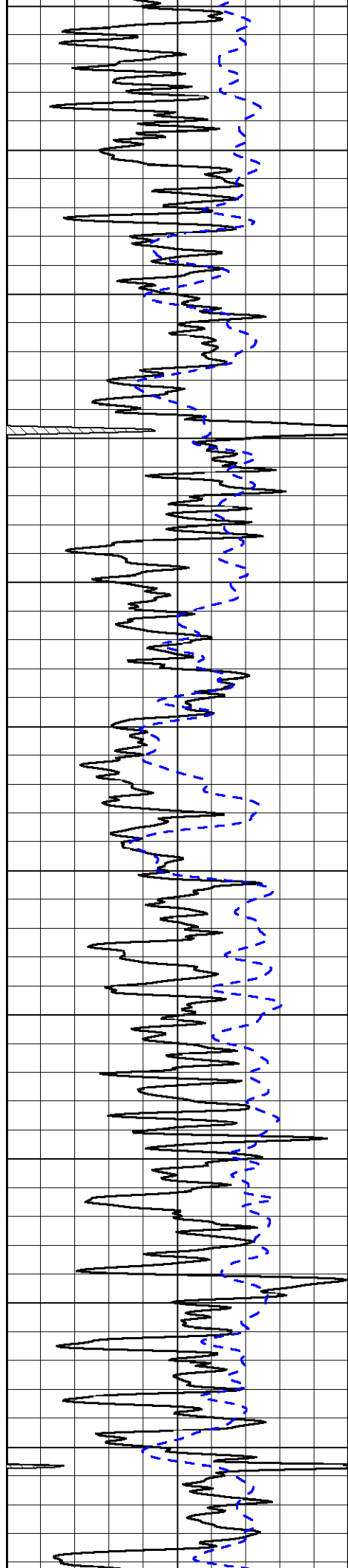
50 Deep Resistivity 500

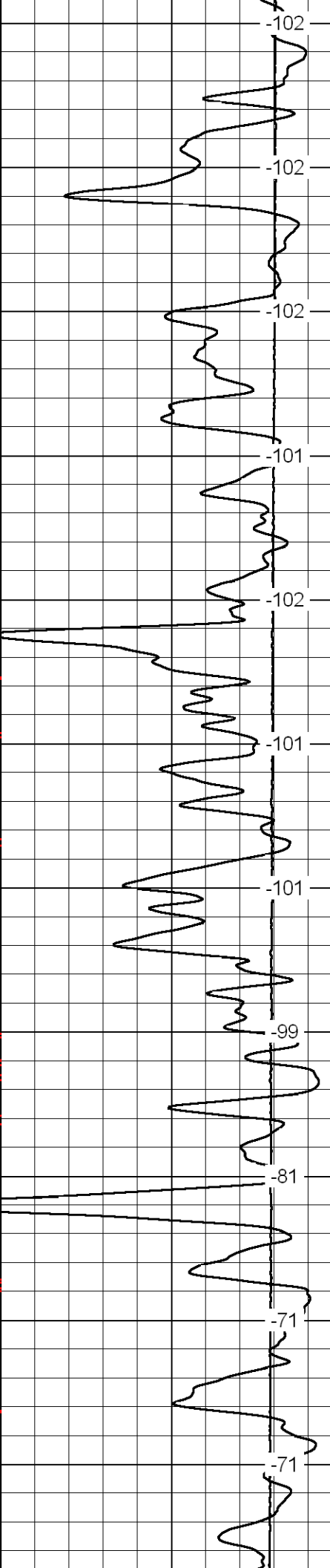
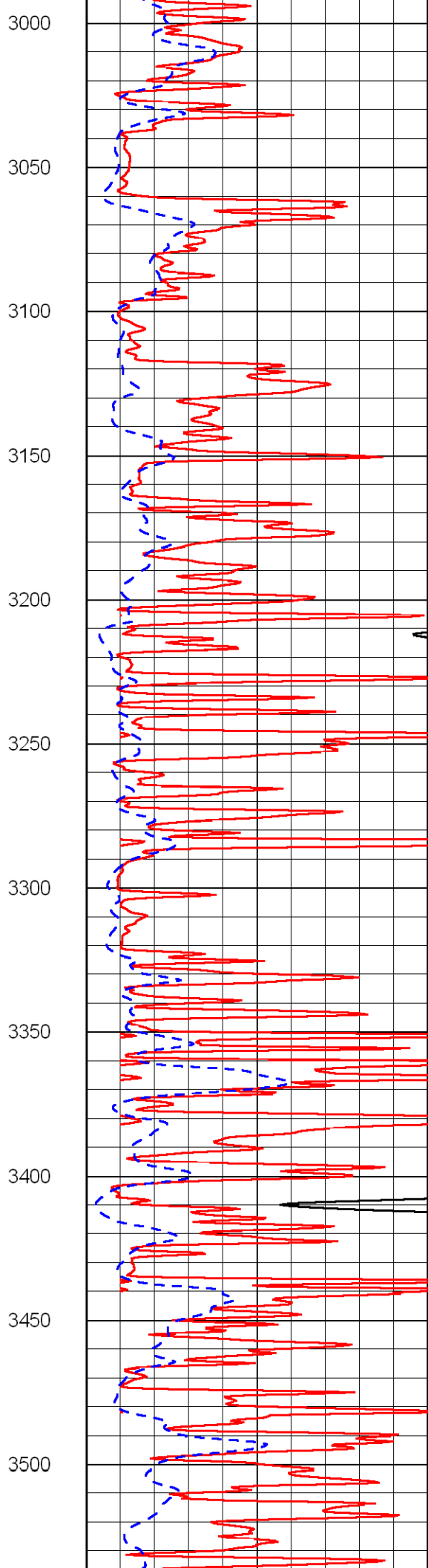
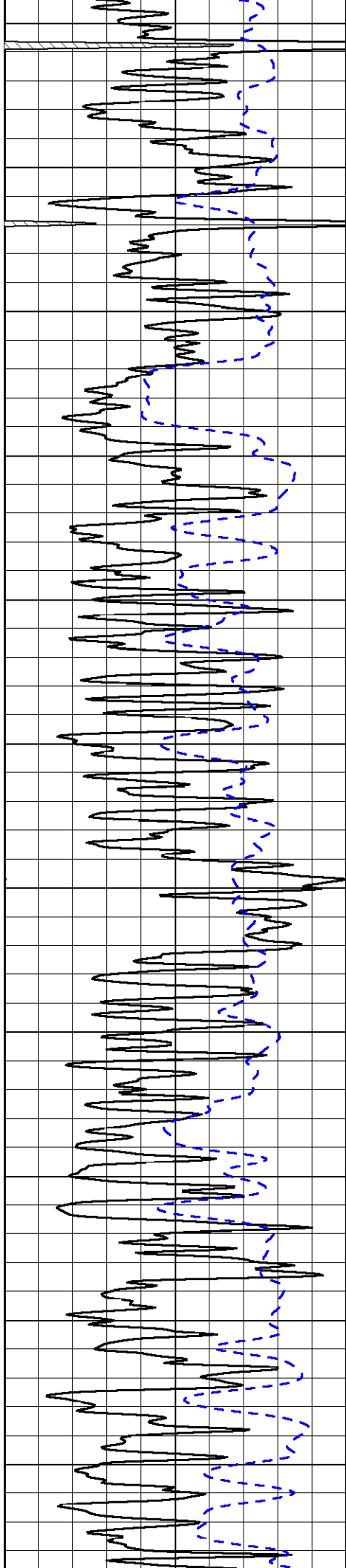


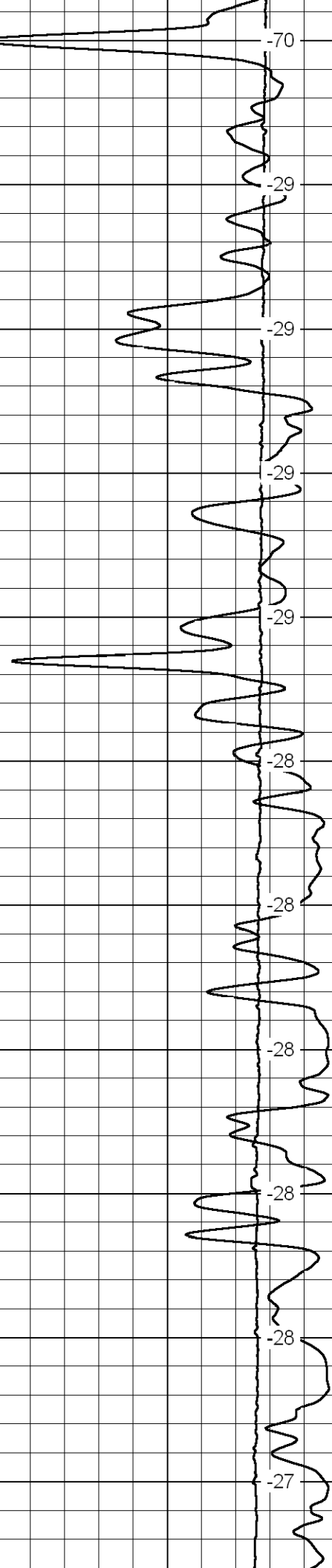
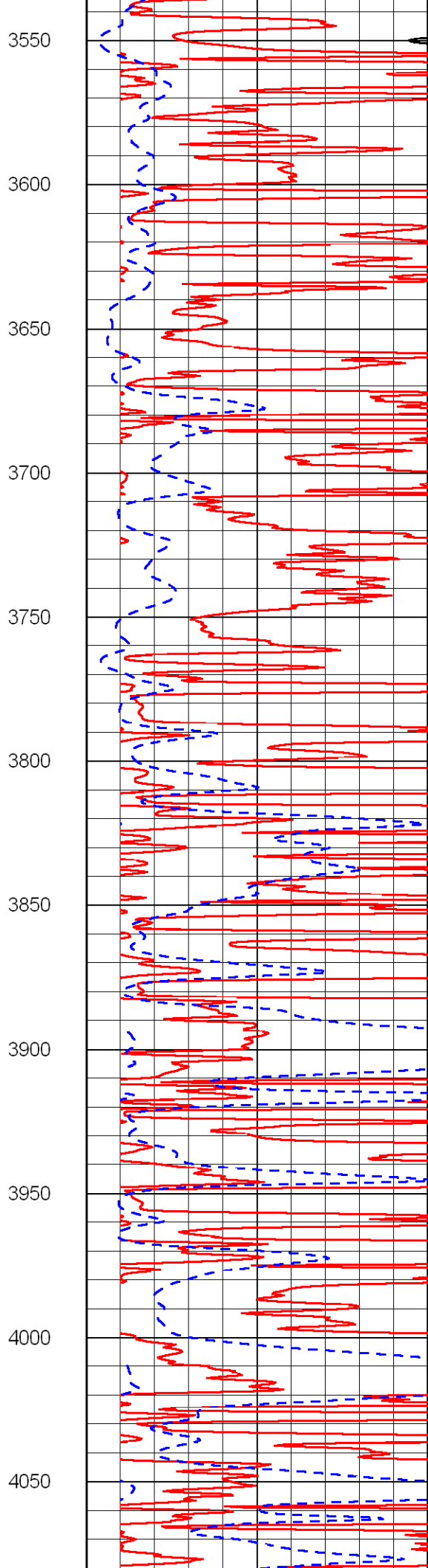
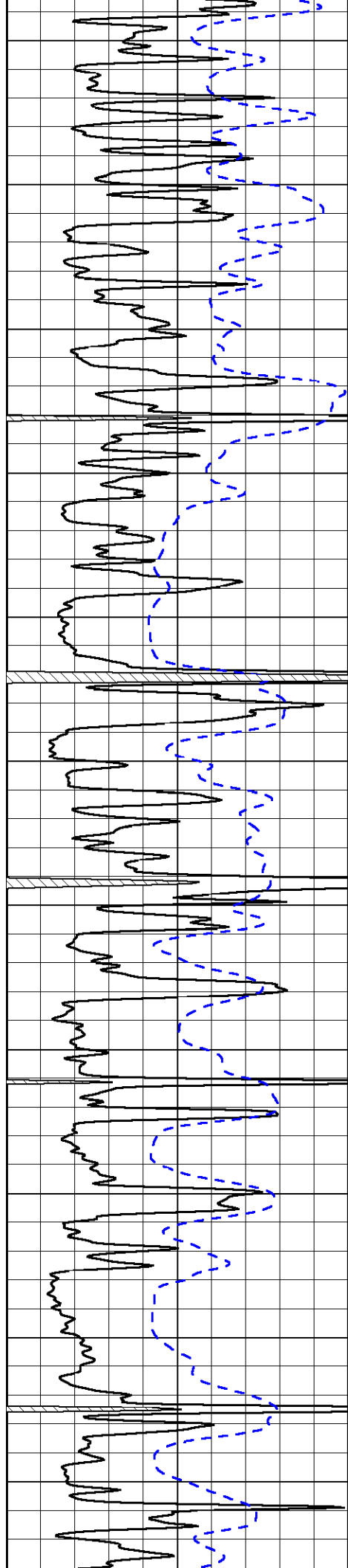


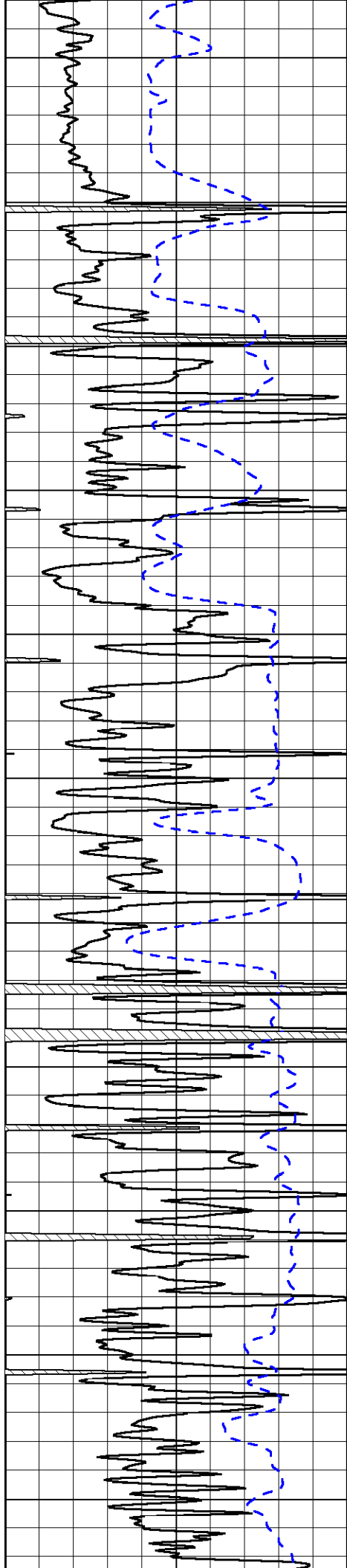




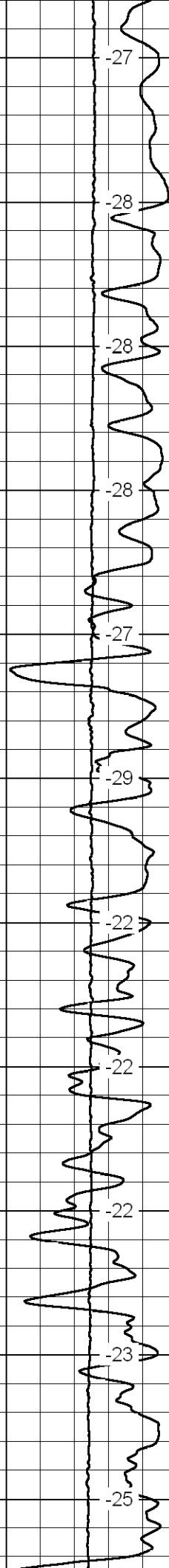
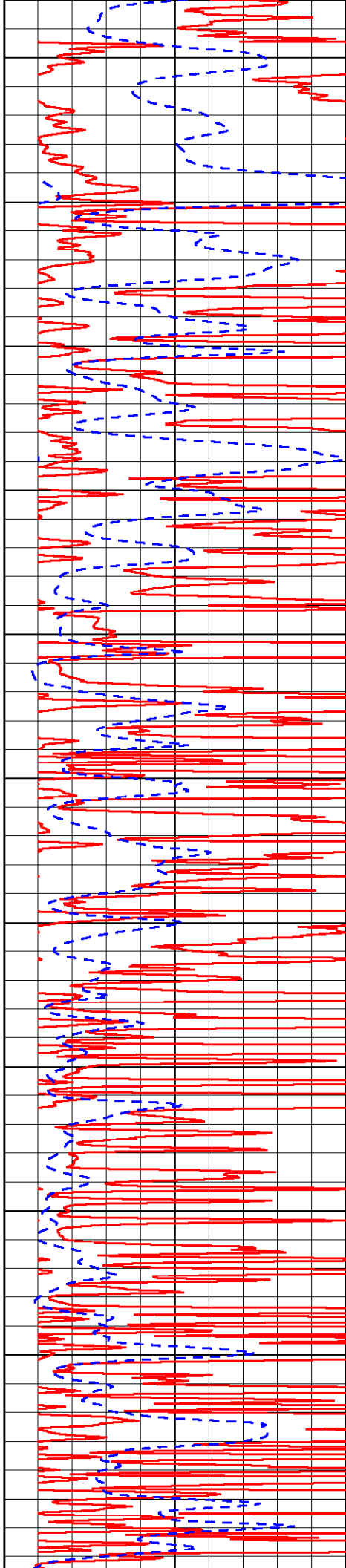


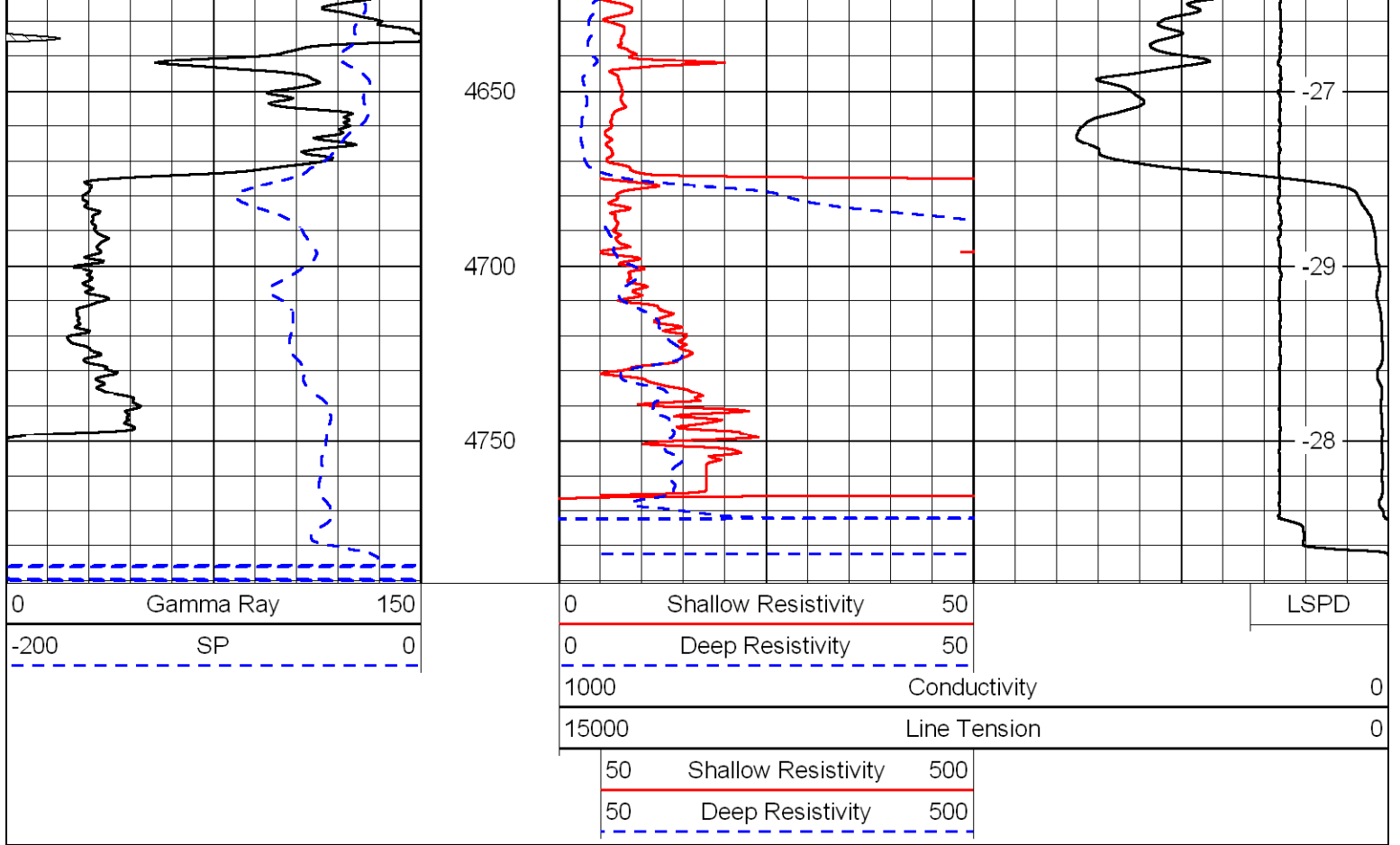




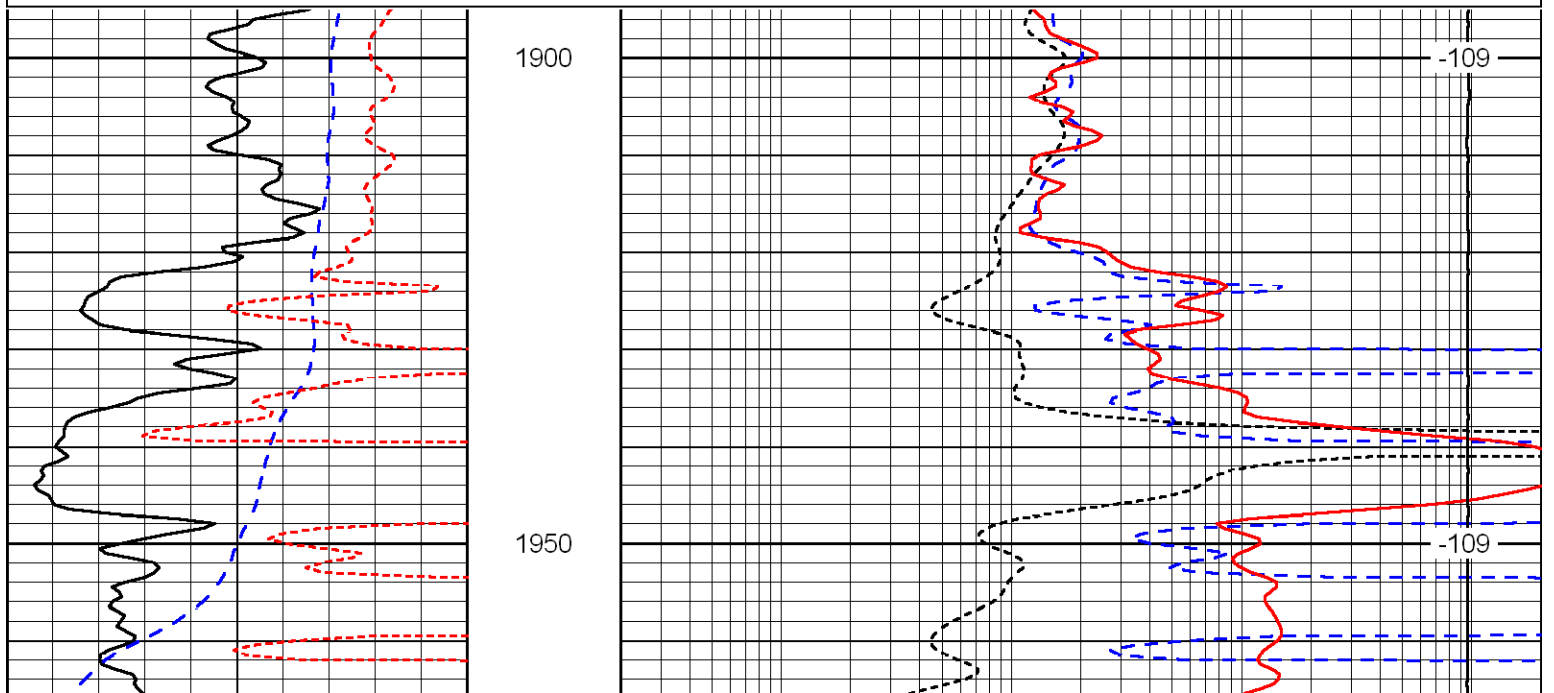
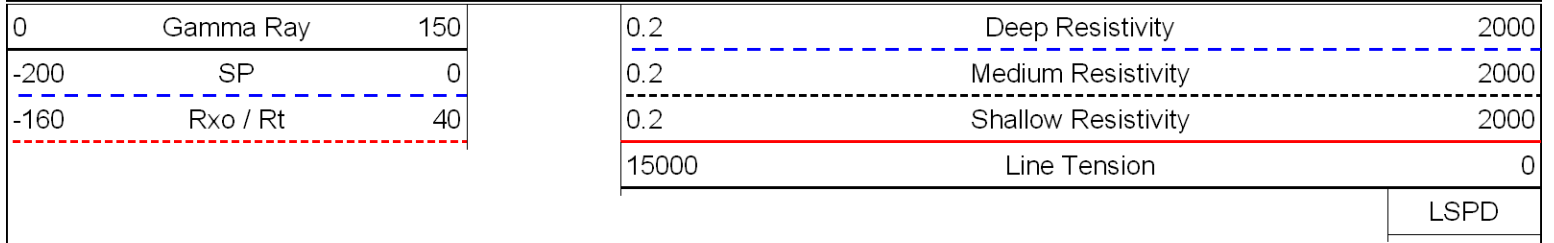


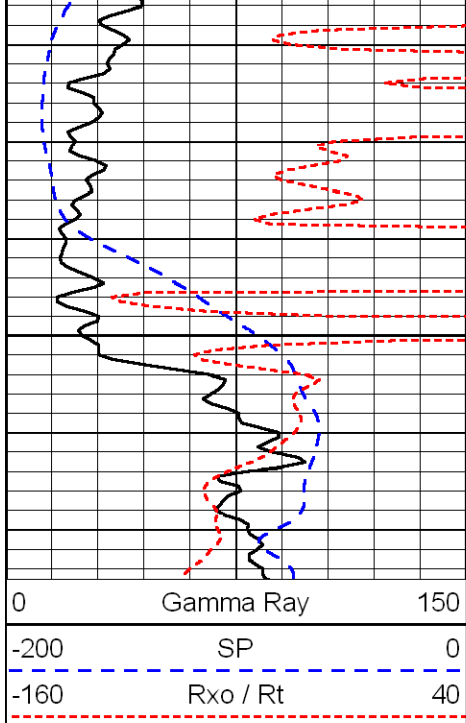
4100
4150
4200
4250
4300
4350
4400
4450
4500
4550
4600



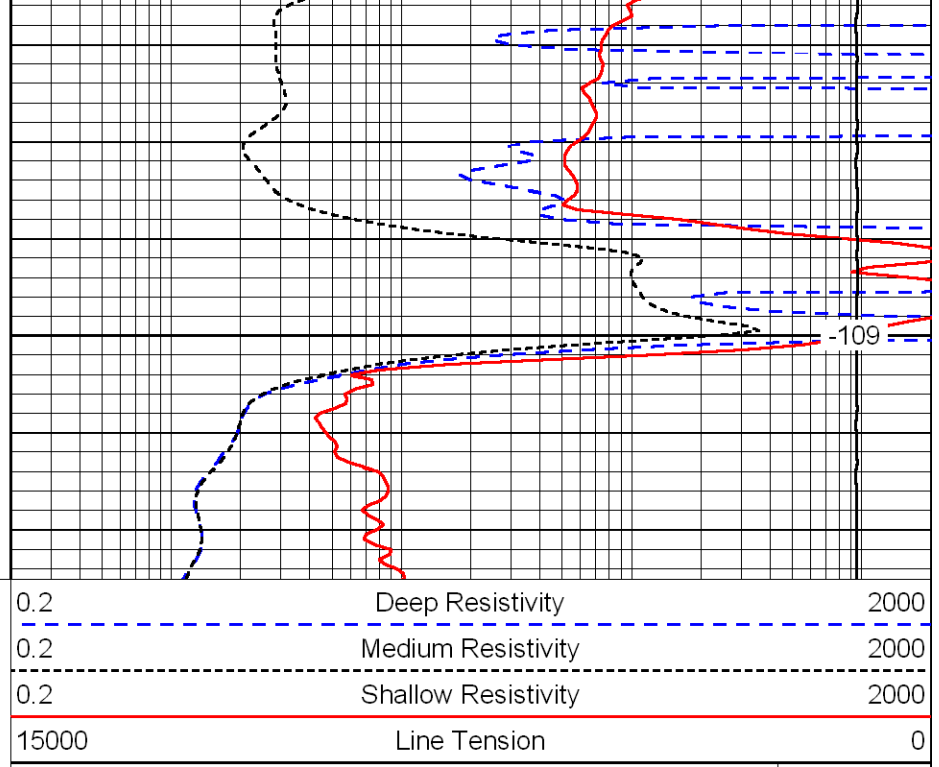


Database File: c:\warrior\data\hartman_ward no. 6\hartman.db
 Dataset Pathname: dil/hartstk
 Presentation Format: dil
 Dataset Creation: Wed Oct 29 19:35:09 2008
 Charted by: Depth in Feet scaled 1:240





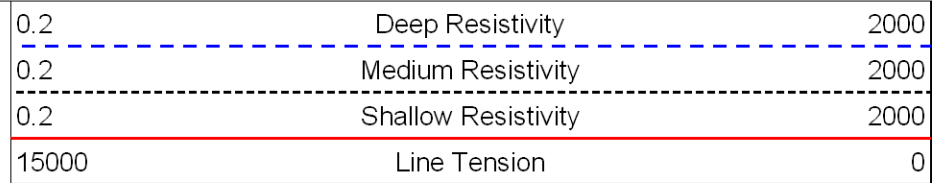
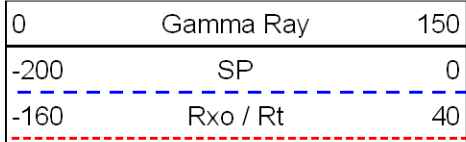
2000



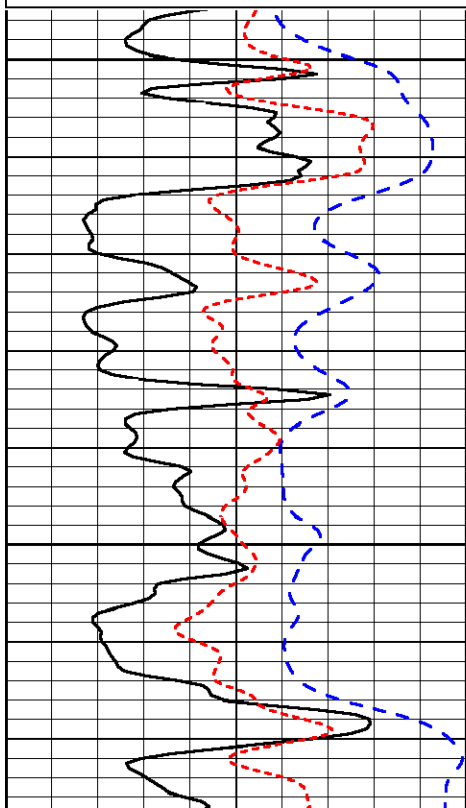
-109

LSPD

Database File: c:\warrior\data\hartman_ward no. 6\hartman.db
 Dataset Pathname: dil/hartstk
 Presentation Format: dil
 Dataset Creation: Wed Oct 29 19:35:09 2008
 Charted by: Depth in Feet scaled 1:240

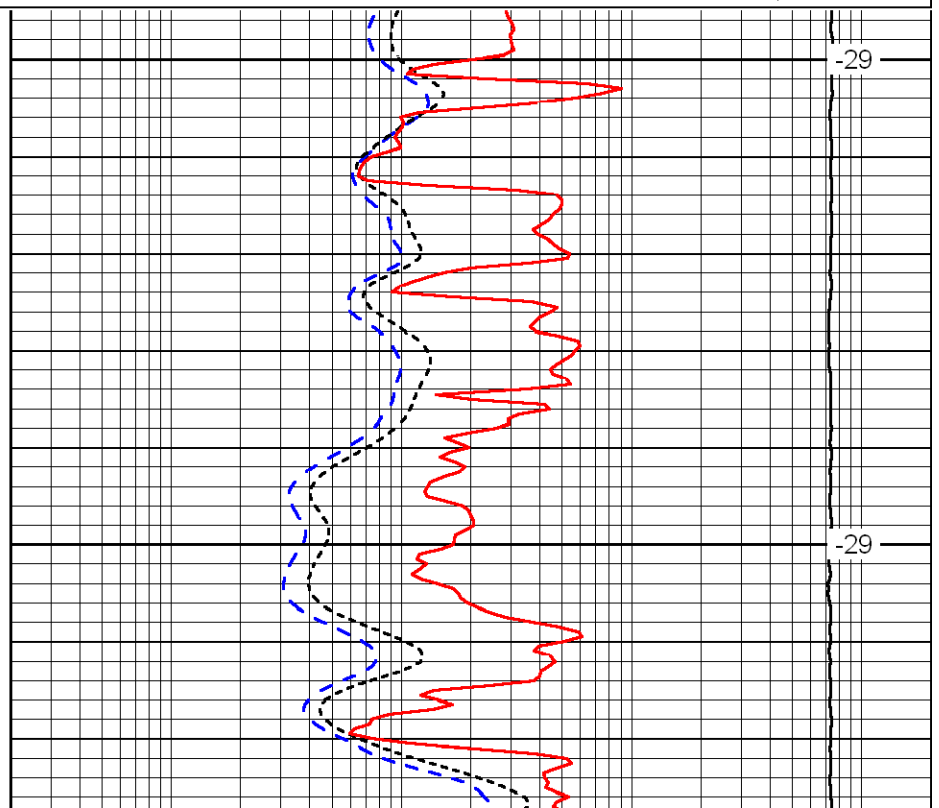


LSPD



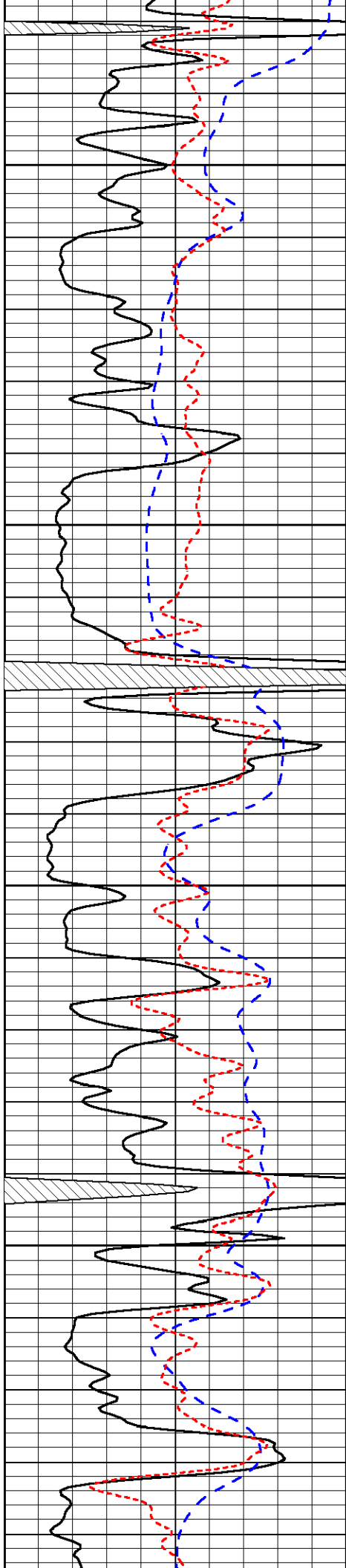
3600

3650



-29

-29

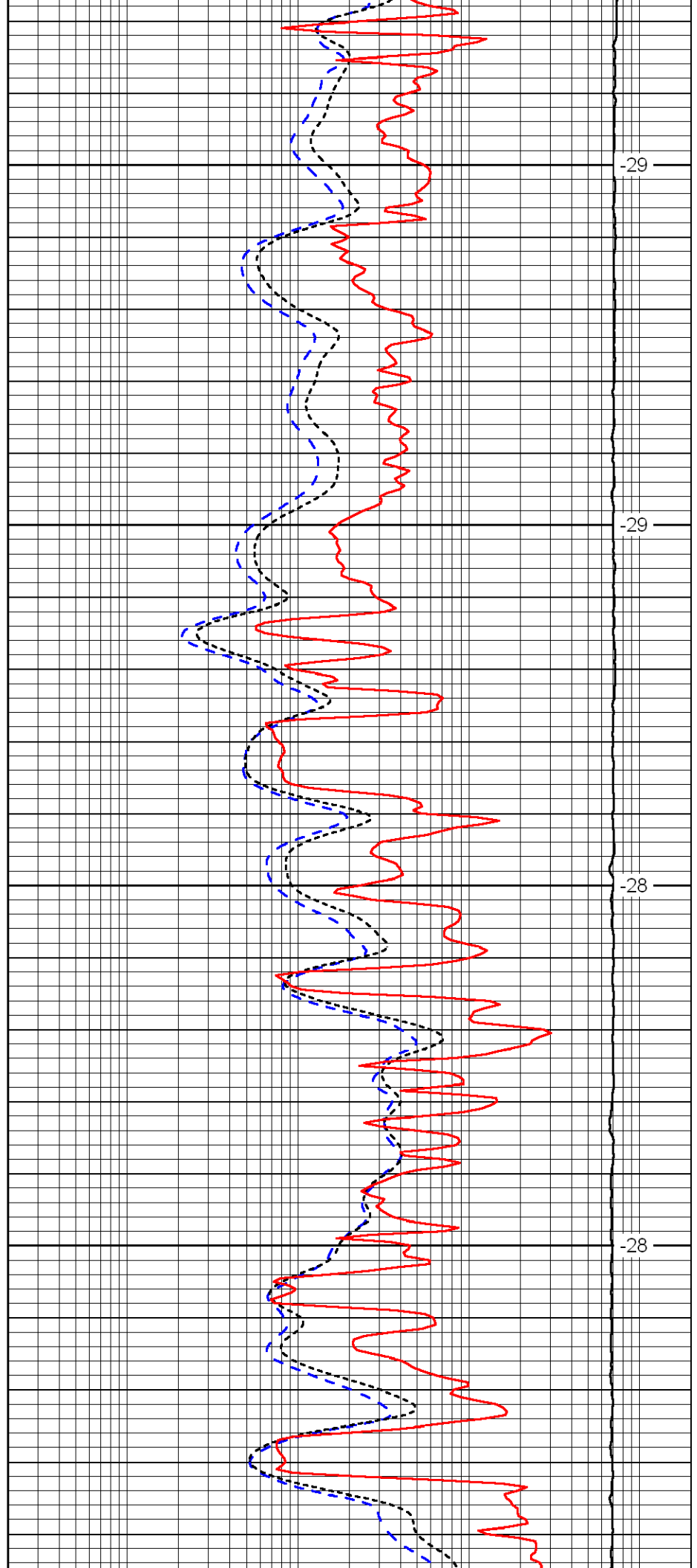


3700

3750

3800

3850

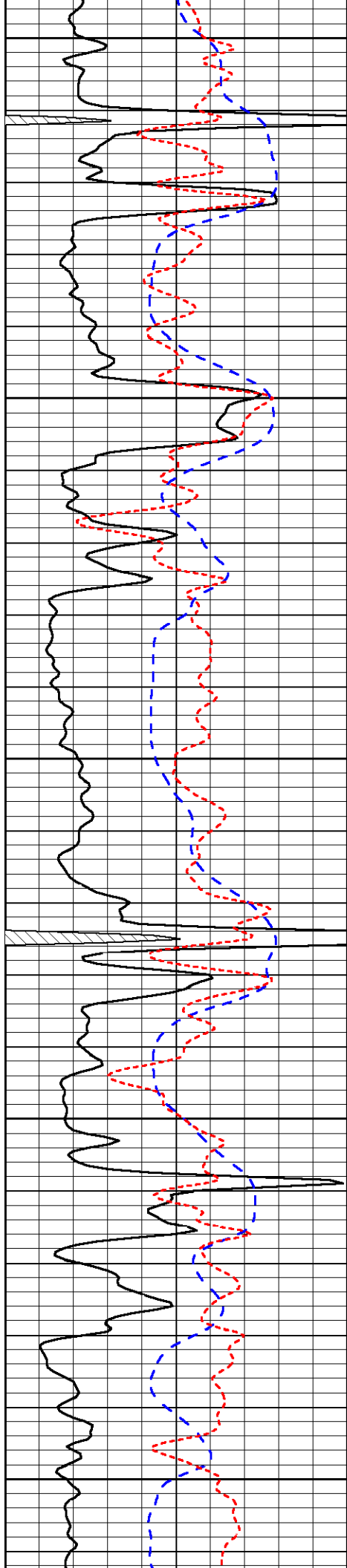


-29

-29

-28

-28



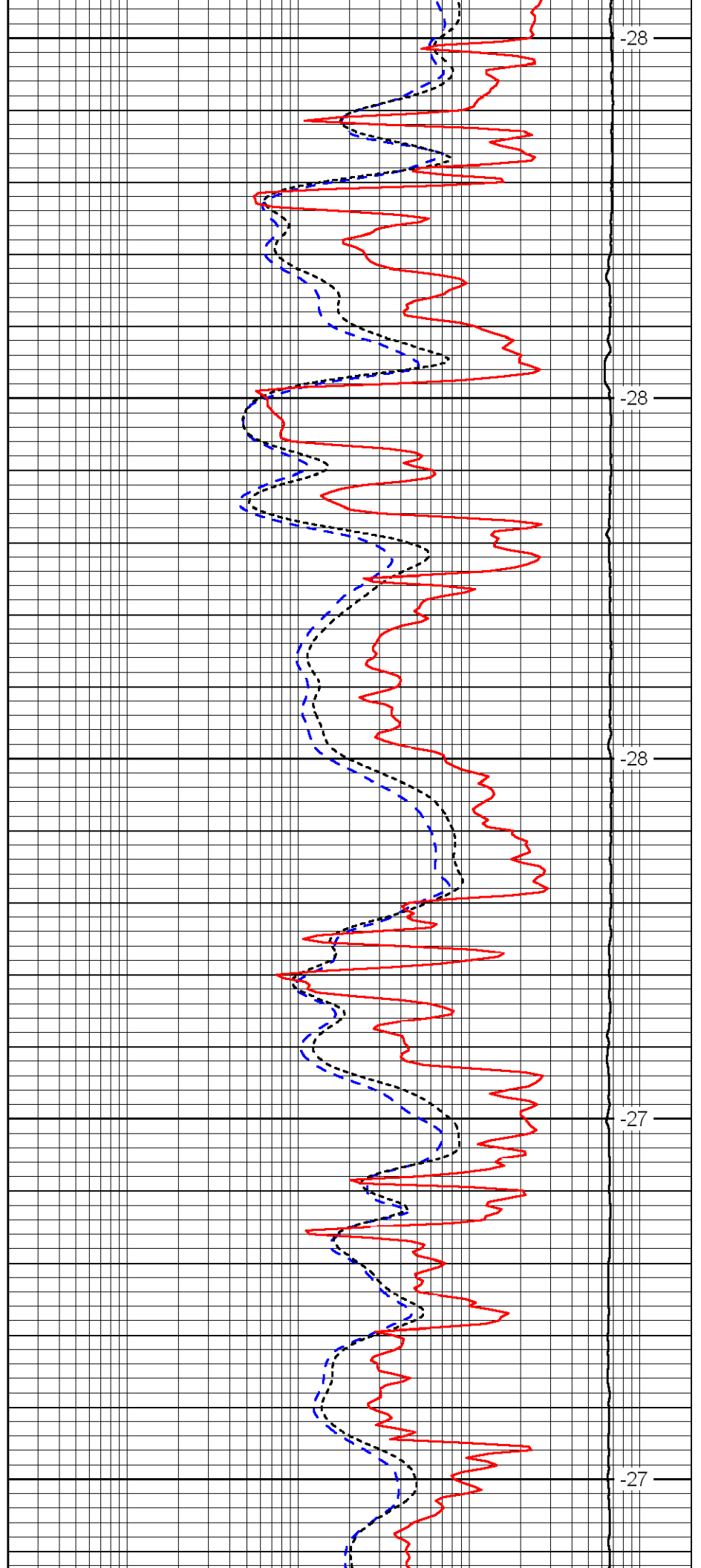
3900

3950

4000

4050

4100



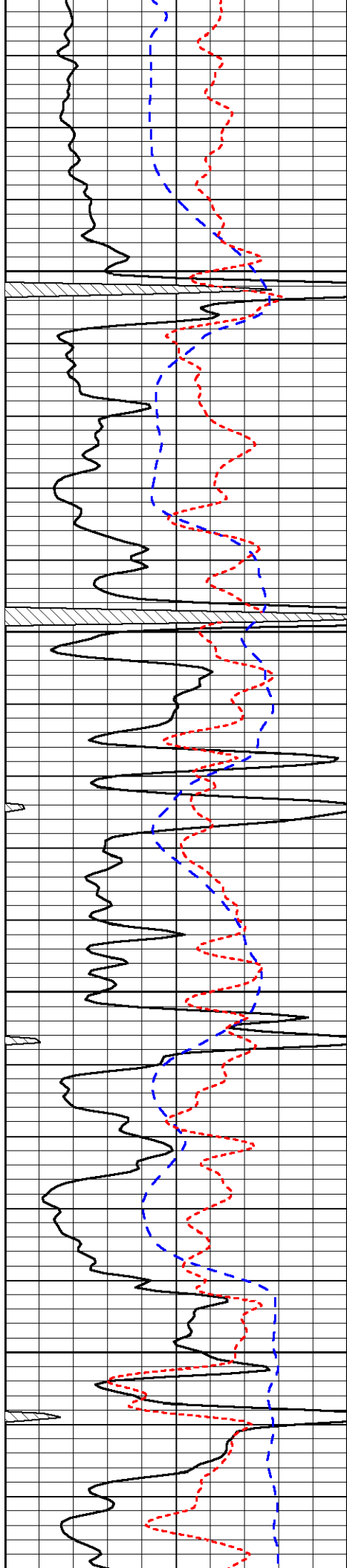
-28

-28

-28

-27

-27

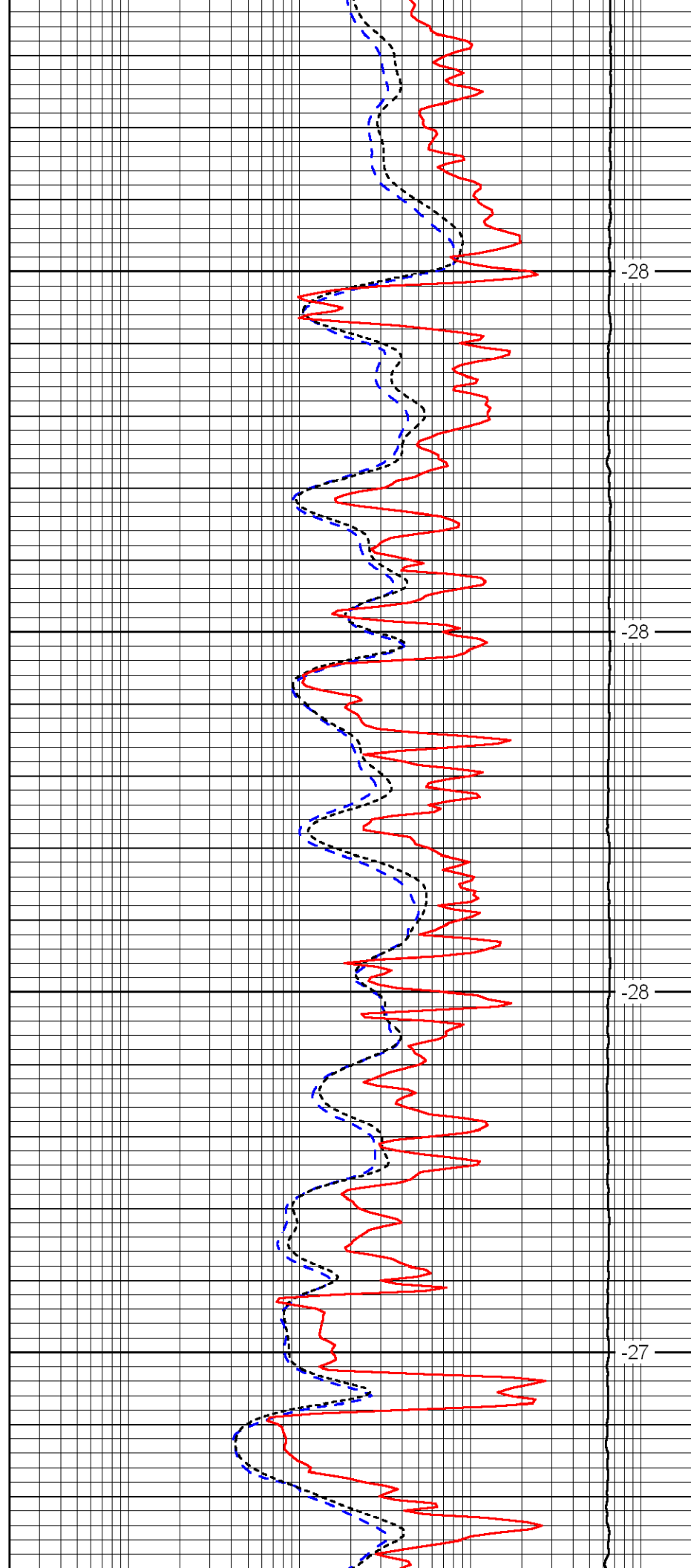


4150

4200

4250

4300

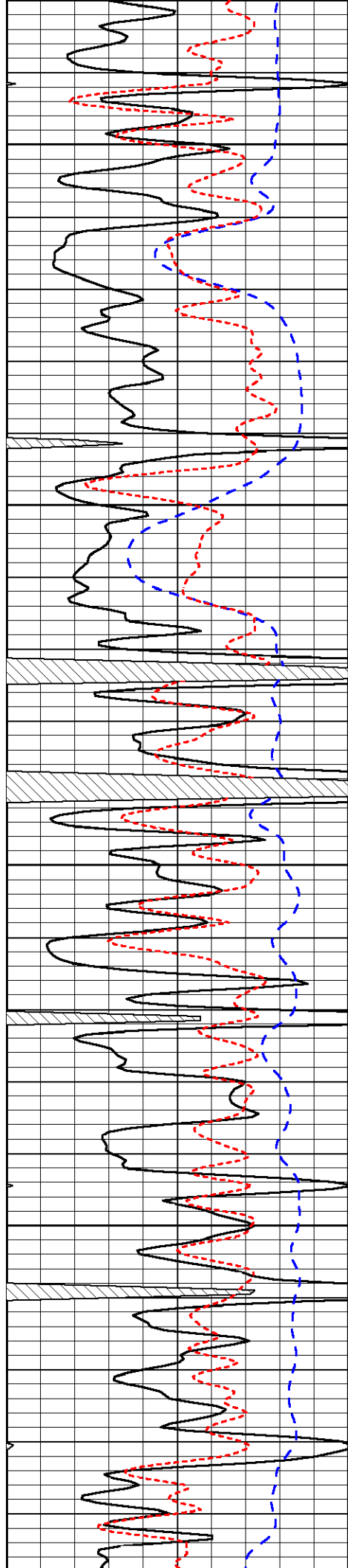


-28

-28

-28

-27

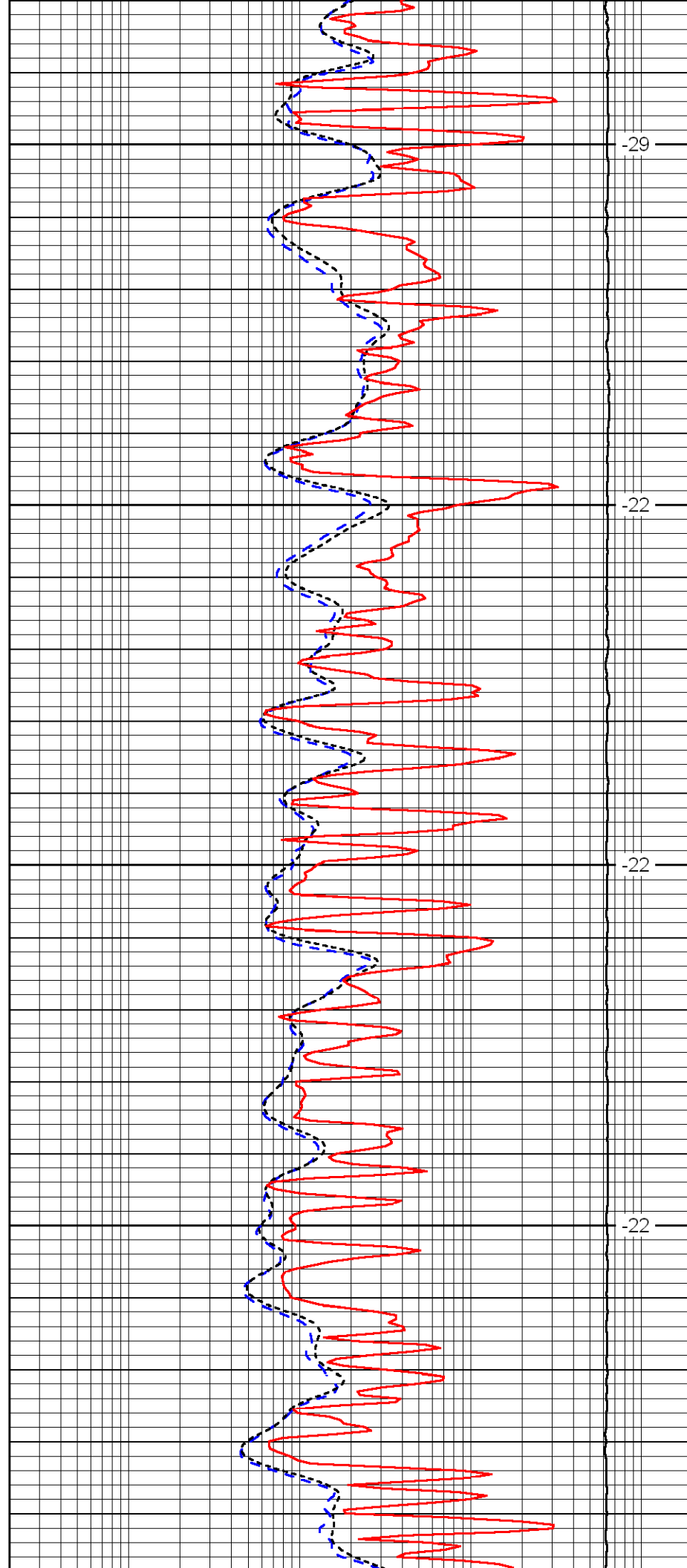


4350

4400

4450

4500

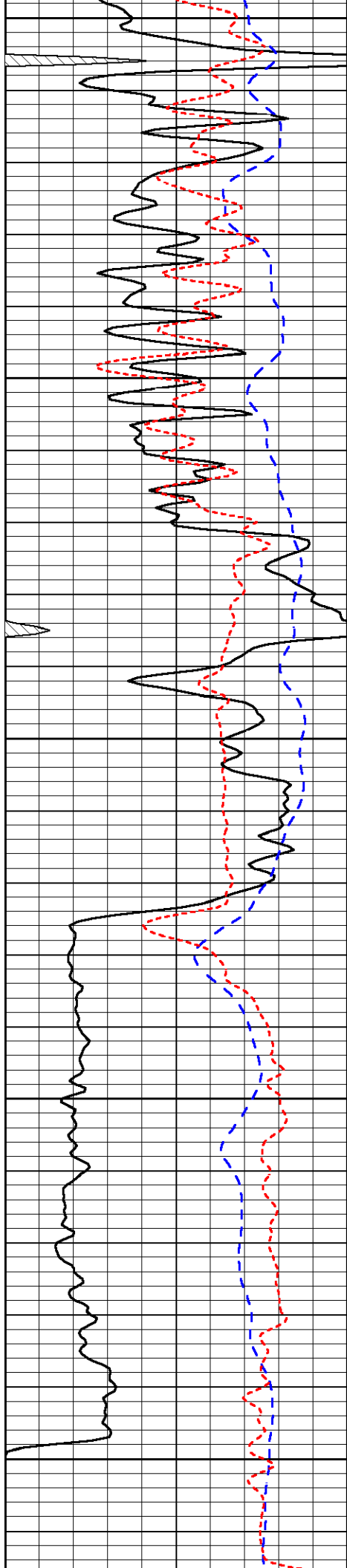


-29

-22

-22

-22



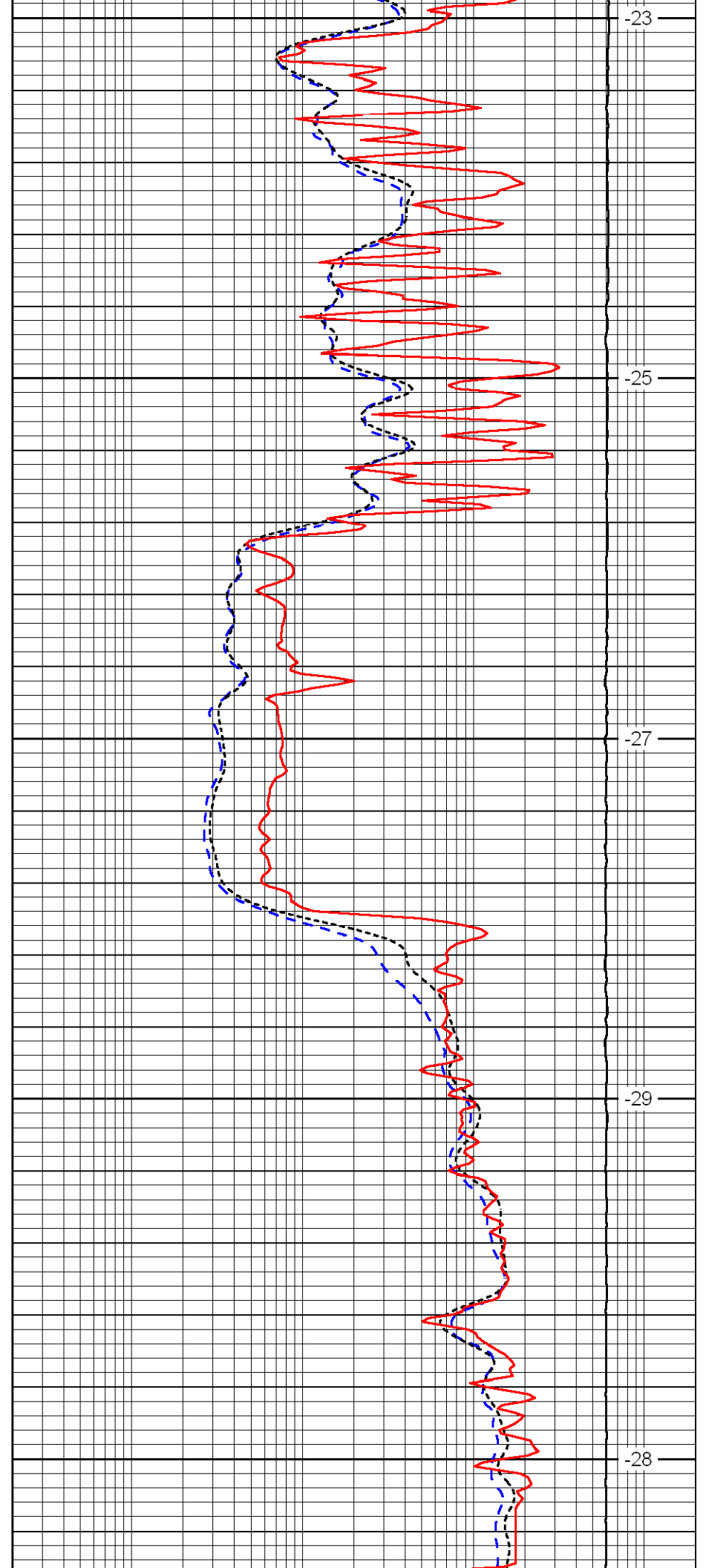
4550

4600

4650

4700

4750



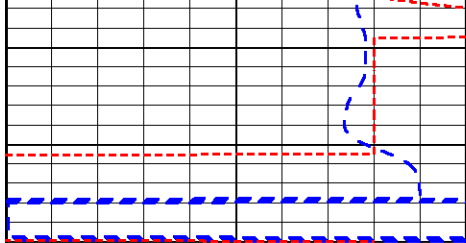
-23

-25

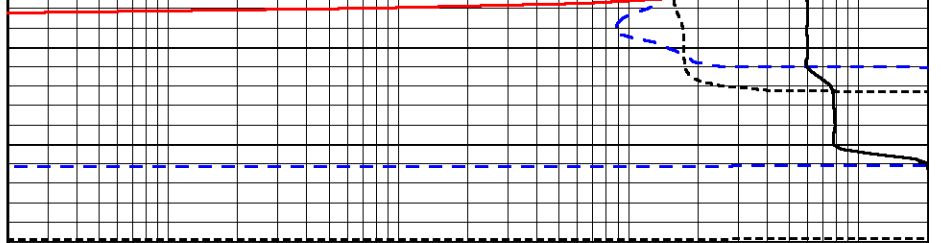
-27

-29

-28



0	Gamma Ray	150
-200	SP	0
-160	Rxo / Rt	40



0.2	Deep Resistivity	2000
0.2	Medium Resistivity	2000
0.2	Shallow Resistivity	2000
15000	Line Tension	0

LSPD