



Microresistivity Log

DIGITAL LOG (785) 625-3858

API No.	15-009-25,319-00-00		
Company	Credo Petroleum Corporation		
Well	Klepper CPC No. 1-9		
Field	Ahrens North		
County	Barton	State	Kansas
Location	1230' FNL & 2555' FEL		
Sec: 9	Twp: 19 S	Rge: 11 W	
Permanent Datum	Ground Level	Elevation	1768
Log Measured From	Kelly Bushing	5 Ft. Above Perm. Datum	
Drilling Measured From	Kelly Bushing		
		Other Services	CNL/CDL DIL/BHCS
		Elevation	K.B. 1773 D.F. 1768 G.L. 1768

Date	6/9/2009	
Run Number	Two	
Depth Driller	3360	
Depth Logger	3357	
Bottom Logged Interval	3356	
Top Log Interval	1500	
Casing Driller	8.625 @ 260	
Casing Logger	259	
Bit Size	7.875	
Type Fluid in Hole	Chemical	
Salinity, ppm CL	7500	
Density / Viscosity	9.1	49
pH / Fluid Loss	9.5	9.6
Source of Sample	Flowline	
Rm @ Meas. Temp	0.2 @ 73	
Rmf @ Meas. Temp	.15 @ 73	
Rmc @ Meas. Temp	.27 @ 73	
Source of Rmf / Rmc	Charts	
Rm @ BHT	.13 @ 112	
Operating Rig Time	6 Hours	
Max Rec. Temp. F	112	
Equipment Number	4	
Location	Havs	
Recorded By	K Bange	
Witnessed By	Jim Musgrove	Lee Brock

<<< Fold Here >>>

All interpretations are opinions based on inferences from electrical or other measurements and we cannot and do not guarantee the accuracy or correctness of any interpretation, and we shall not, except in the case of gross or willful negligence on our part, be liable or responsible for any loss, costs, damages, or expenses incurred or sustained by anyone resulting from any interpretation made by any of our officers, agents or employees. These interpretations are also subject to our general terms and conditions set out in our current Price Schedule.

Comments

Thank you for using Log-Tech, Inc.
(785) 625-3858

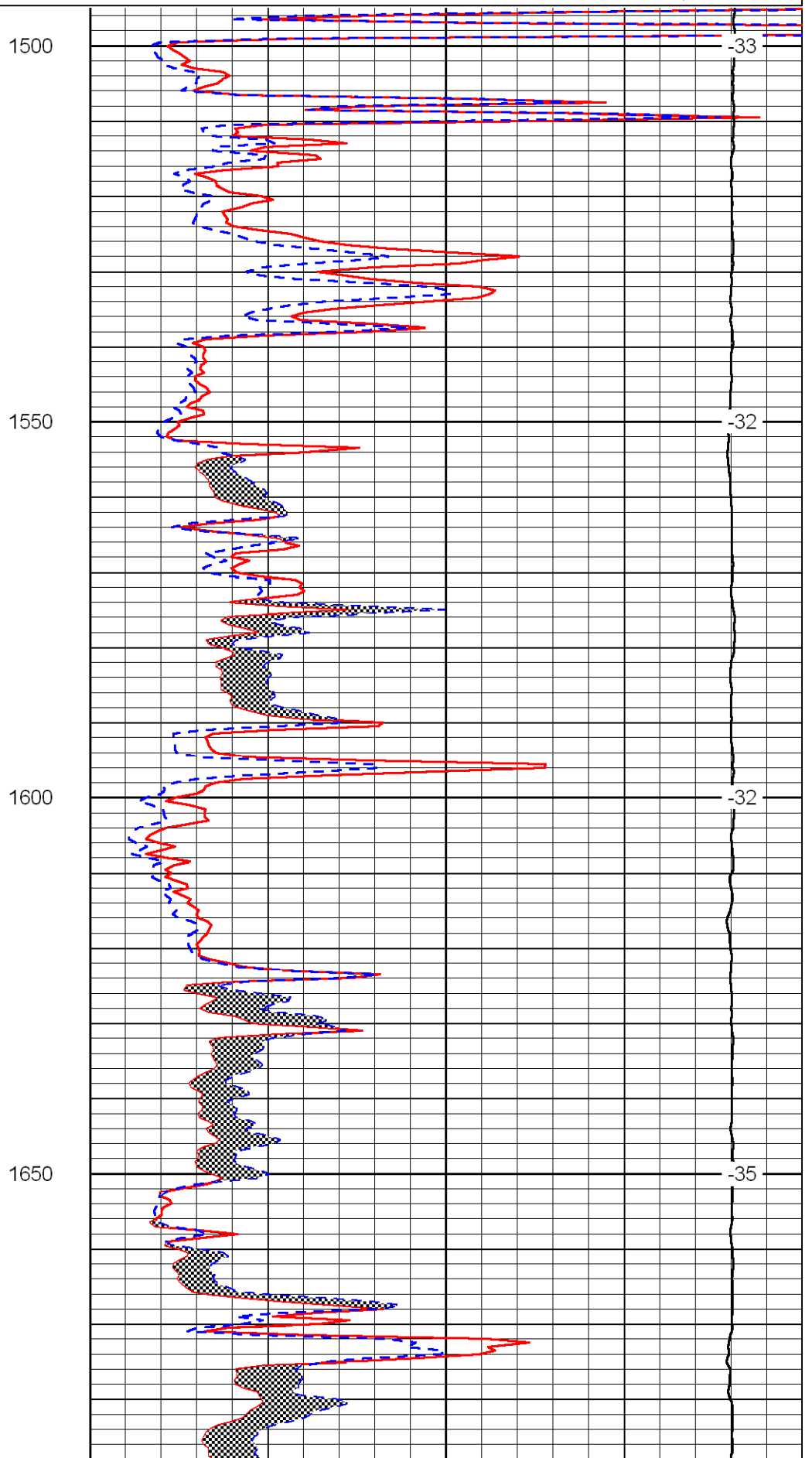
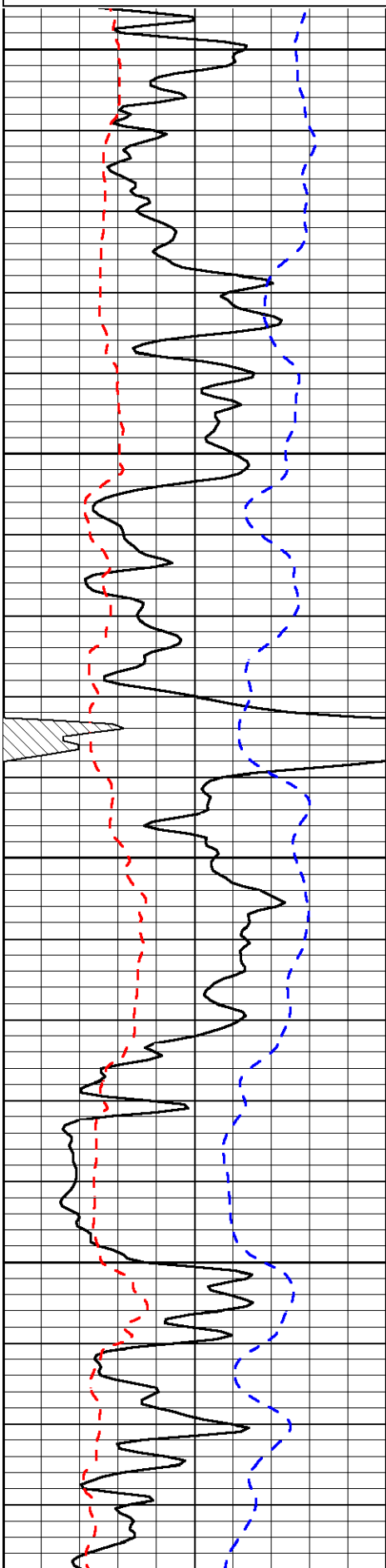
Ellenwood East Side to Hirsch, 5 North to NE 40, 2 East, South into

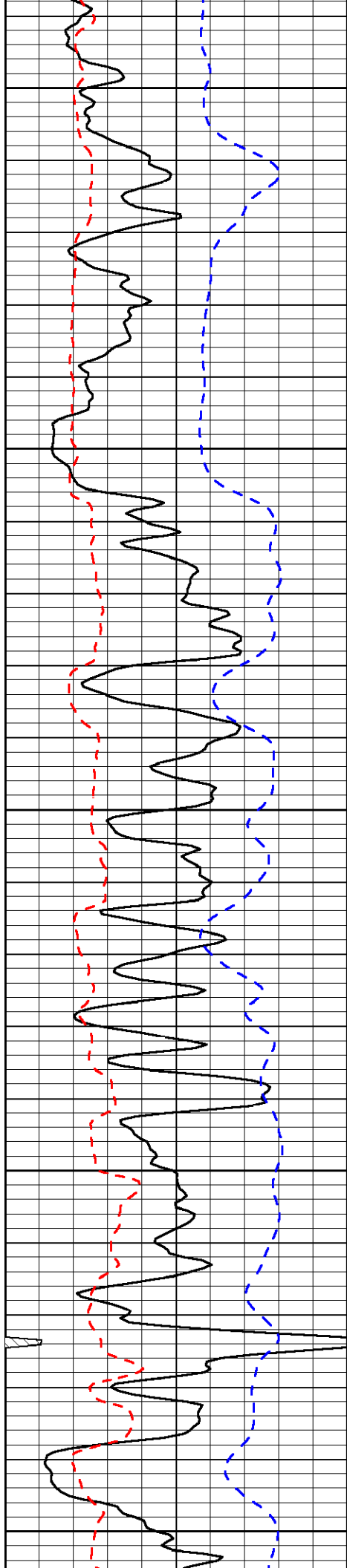
Database File: c:\warrior\data\credo_klepper cpc no. 1-9\credo60909hd.db
 Dataset Pathname: dil/cred2in
 Presentation Format: micro
 Dataset Creation: Tue Jun 09 05:42:22 2009
 Charted by: Depth in Feet scaled 1:240

0	Gamma Ray	150
6	Micro Log Caliper (in)	16
-200	SP (MV)	0

0	Micro Inverse 1 X 1 (Ohm-m)	40
0	Micro Normal 2" (Ohm-m)	40
10000	Line Weight (lb)	0

LSPD
(ft/min)





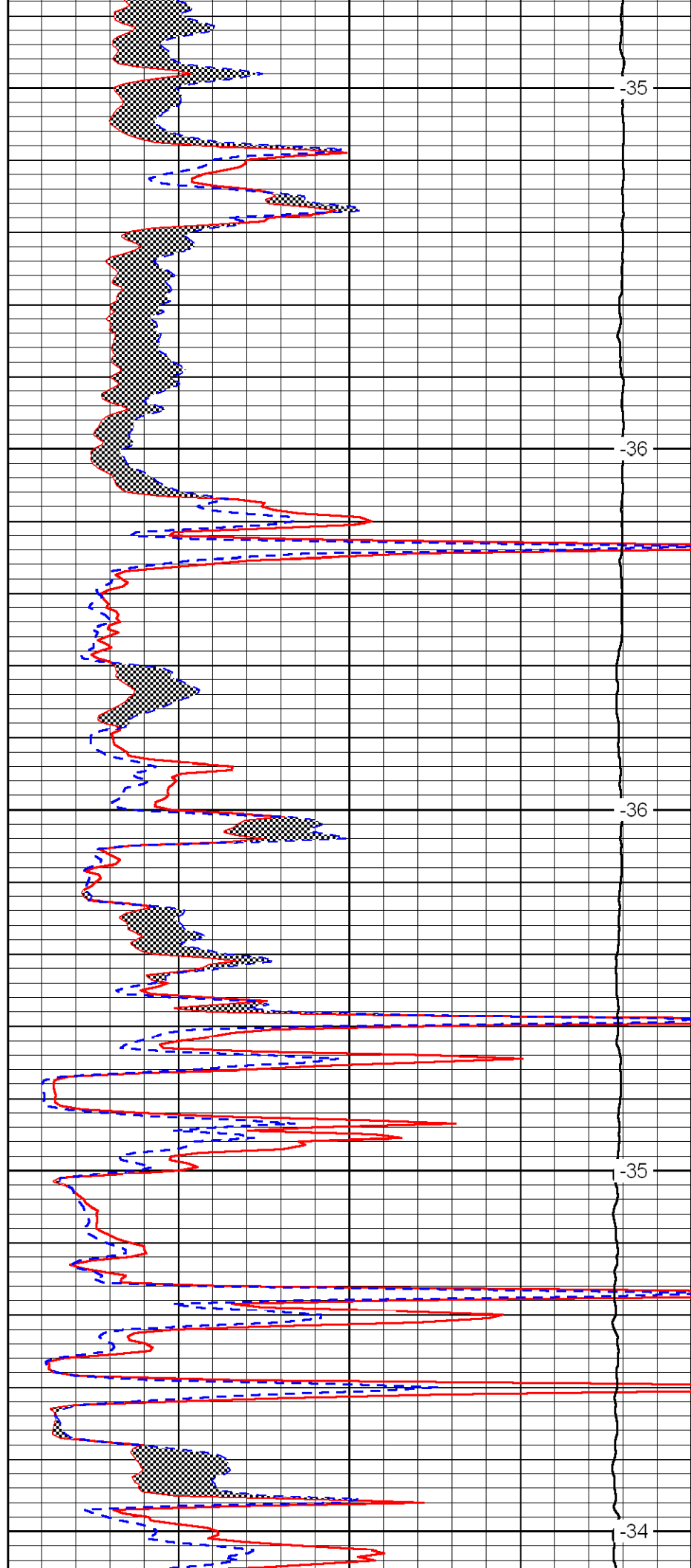
1700

1750

1800

1850

1900



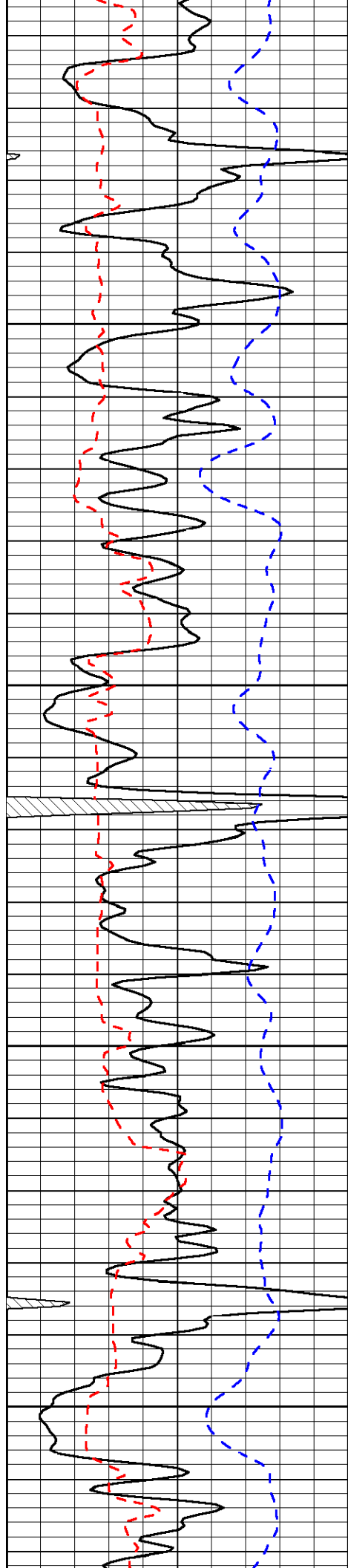
-35

-36

-36

-35

-34

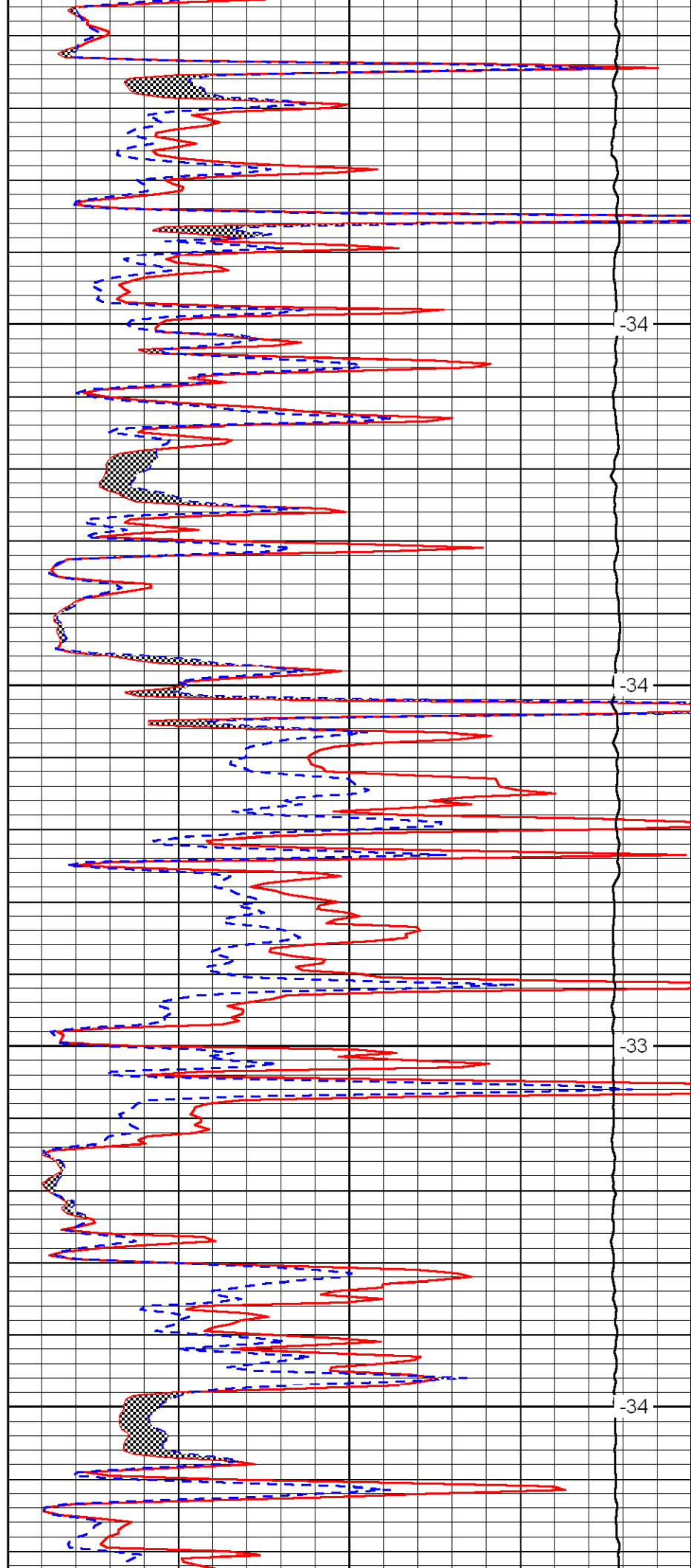


1950

2000

2050

2100

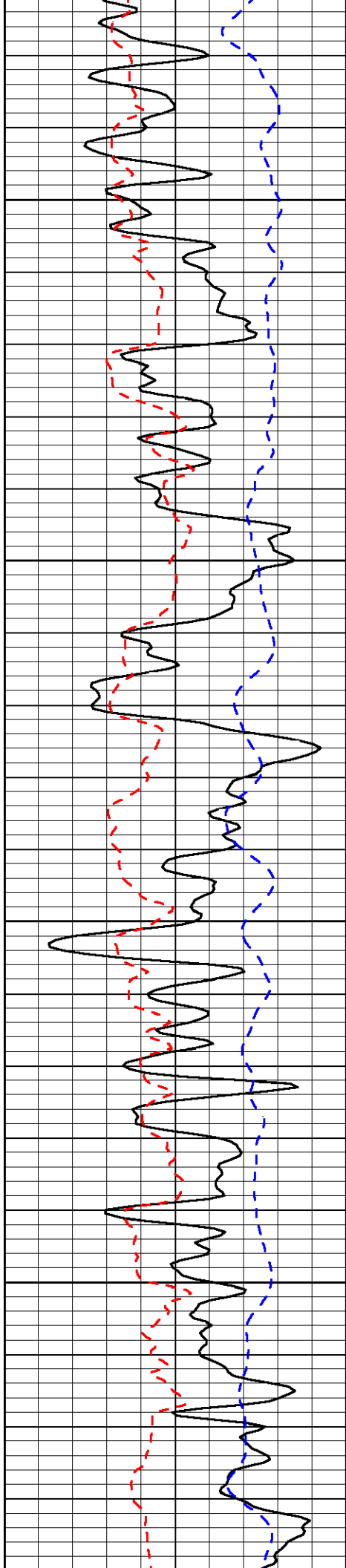


-34

-34

-33

-34

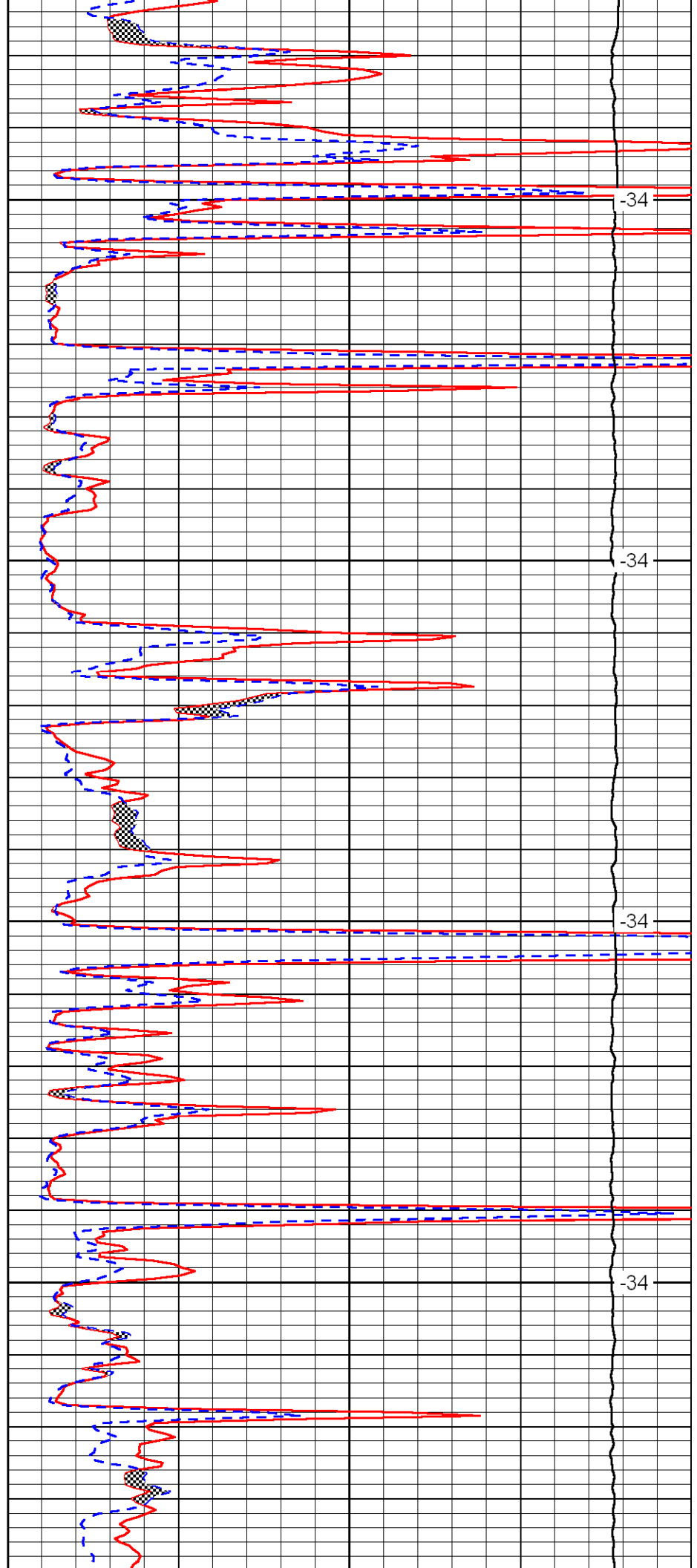


2150

2200

2250

2300

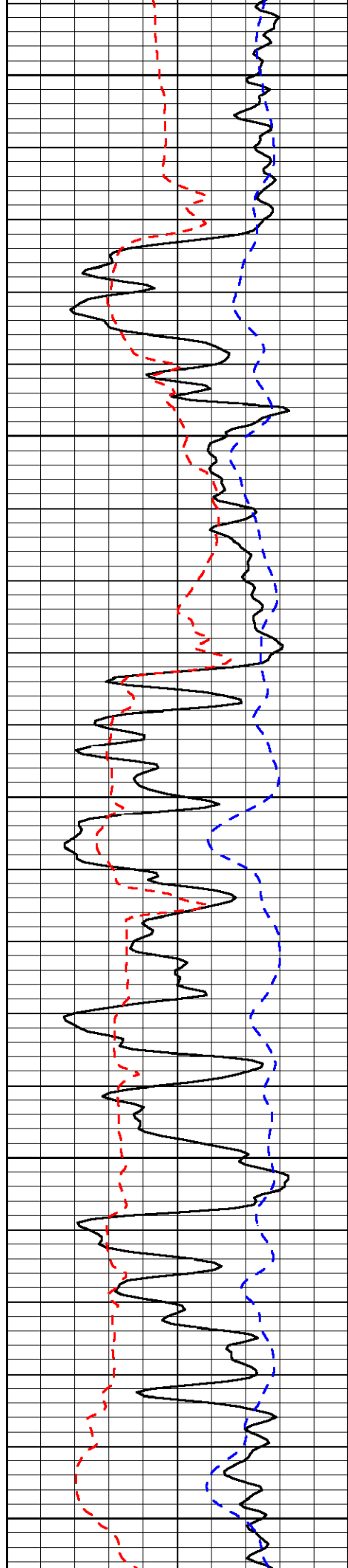


-34

-34

-34

-34



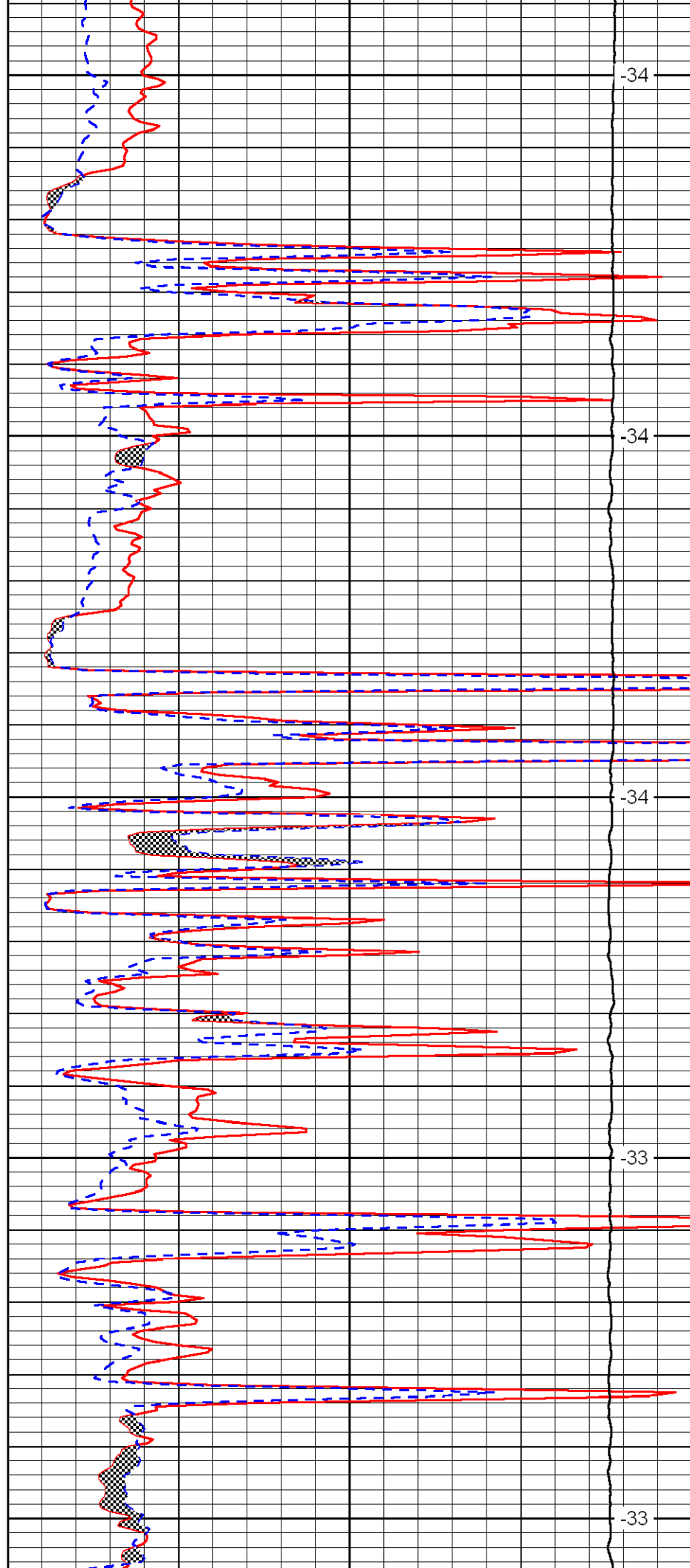
2350

2400

2450

2500

2550



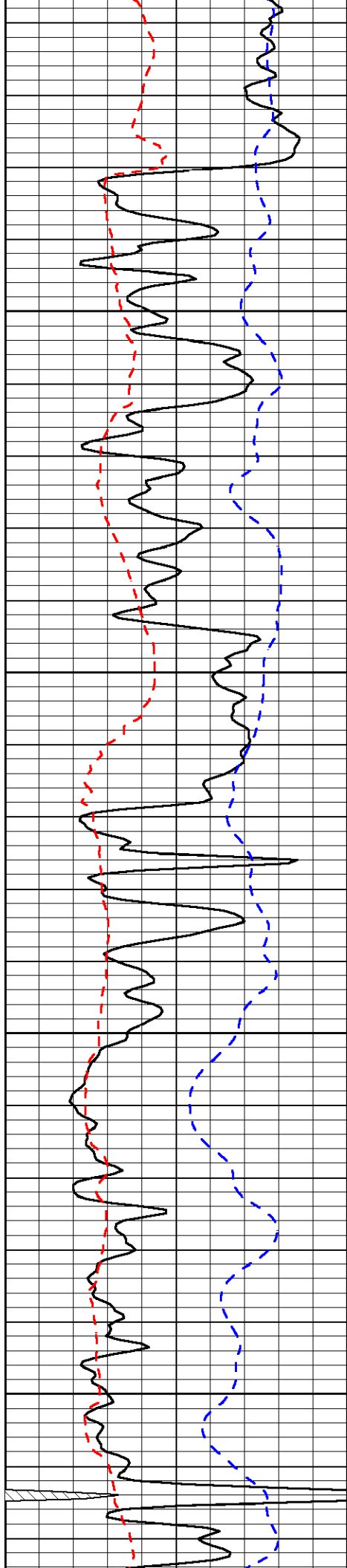
-34

-34

-34

-33

-33

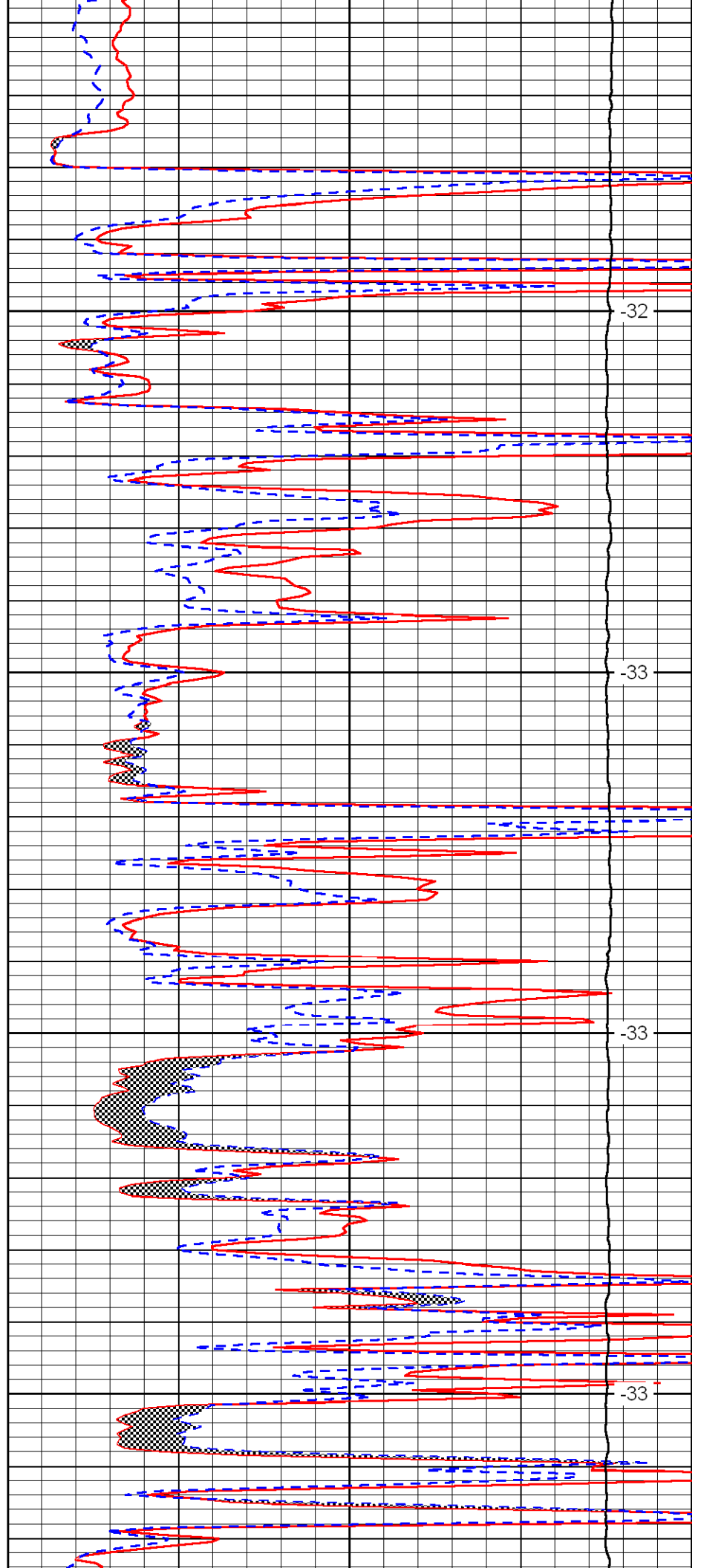


2600

2650

2700

2750

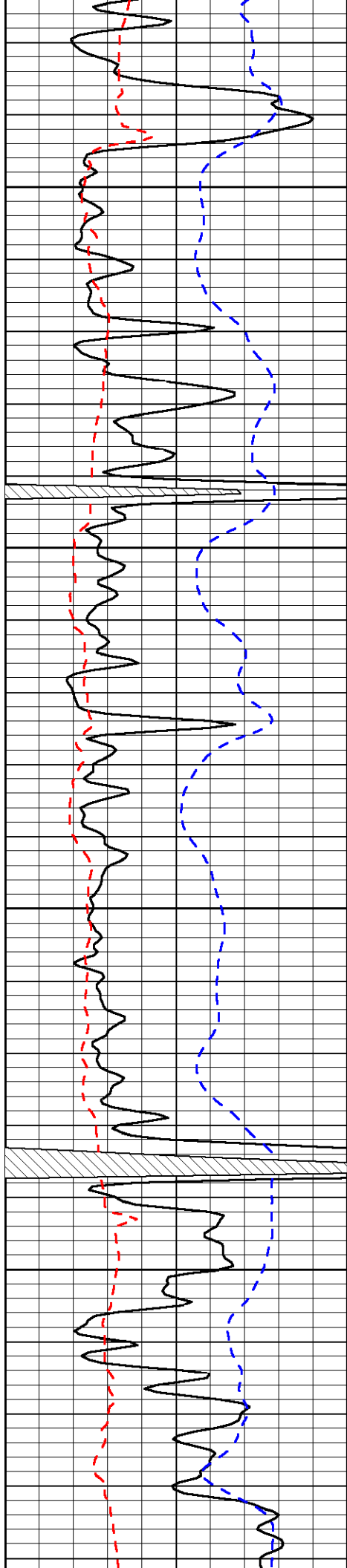


-32

-33

-33

-33

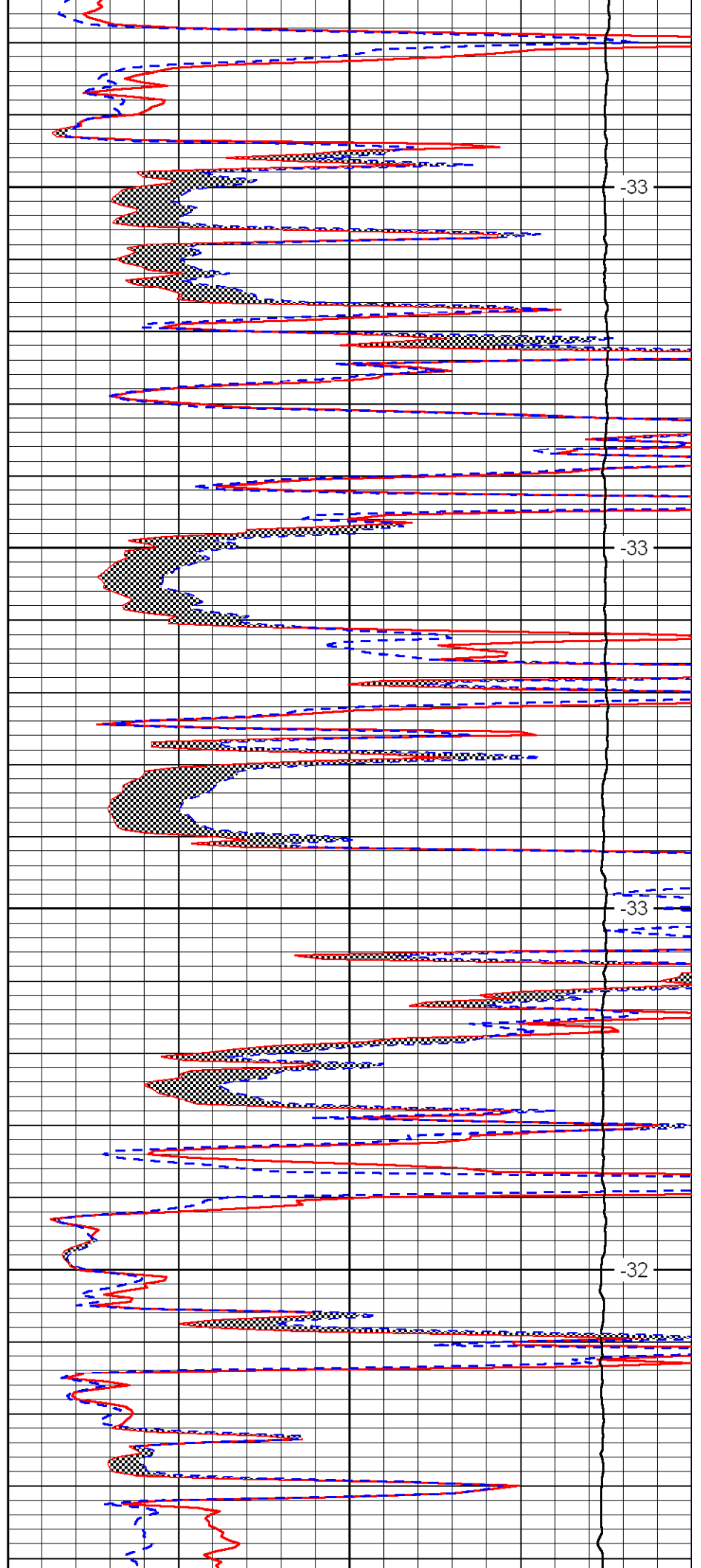


2800

2850

2900

2950

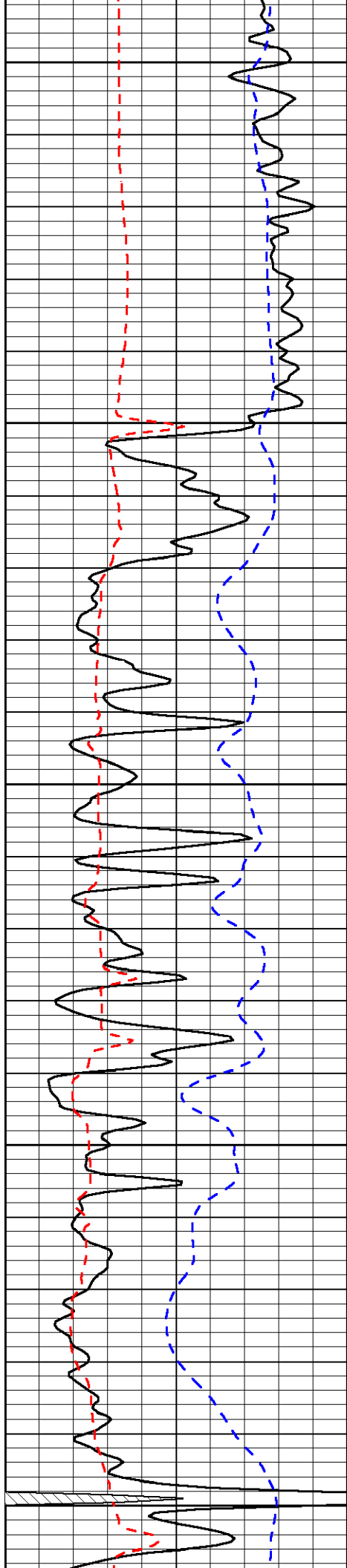


-33

-33

-33

-32



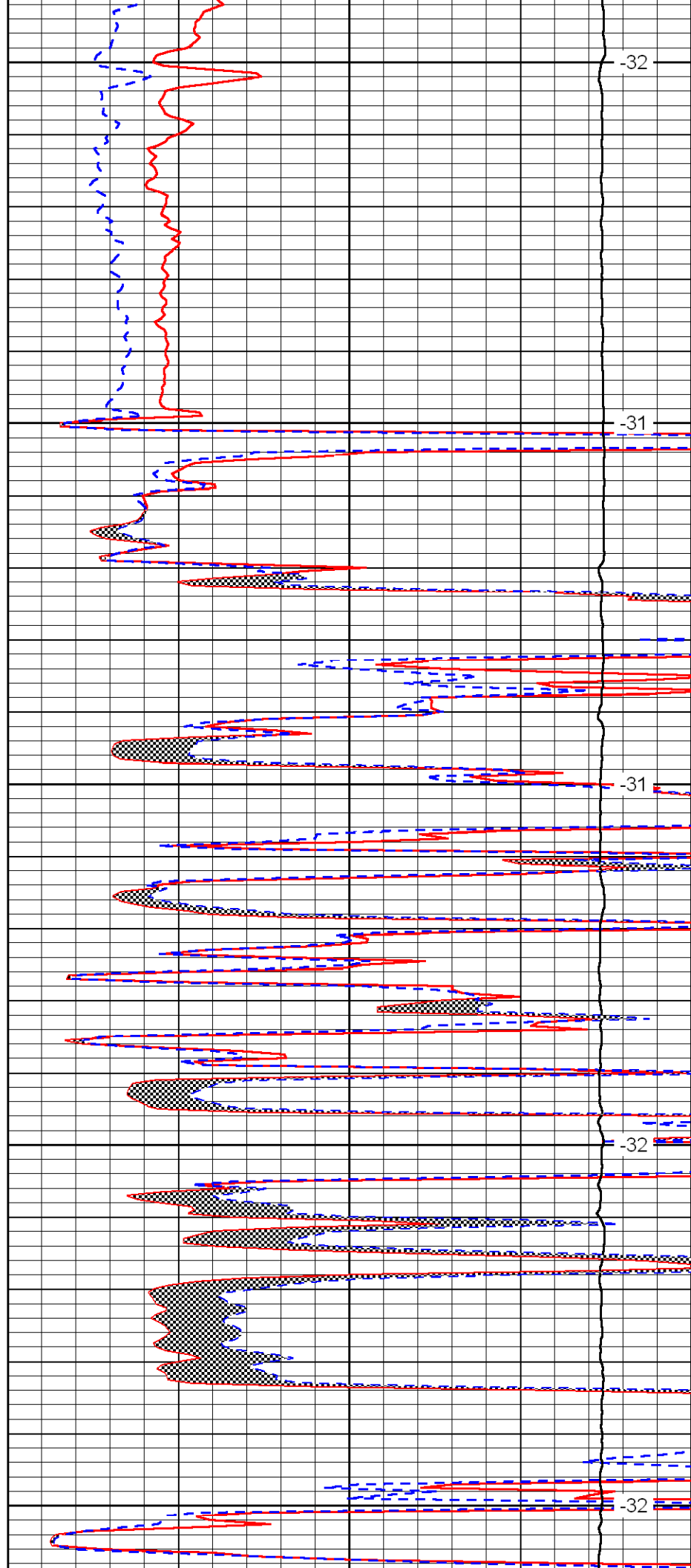
3000

3050

3100

3150

3200



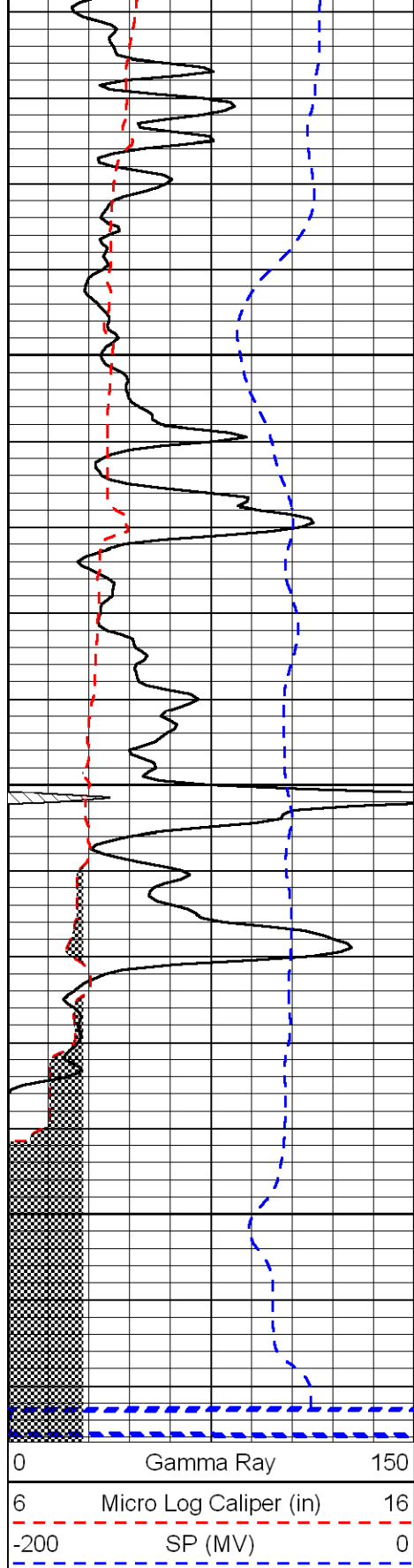
-32

-31

-31

-32

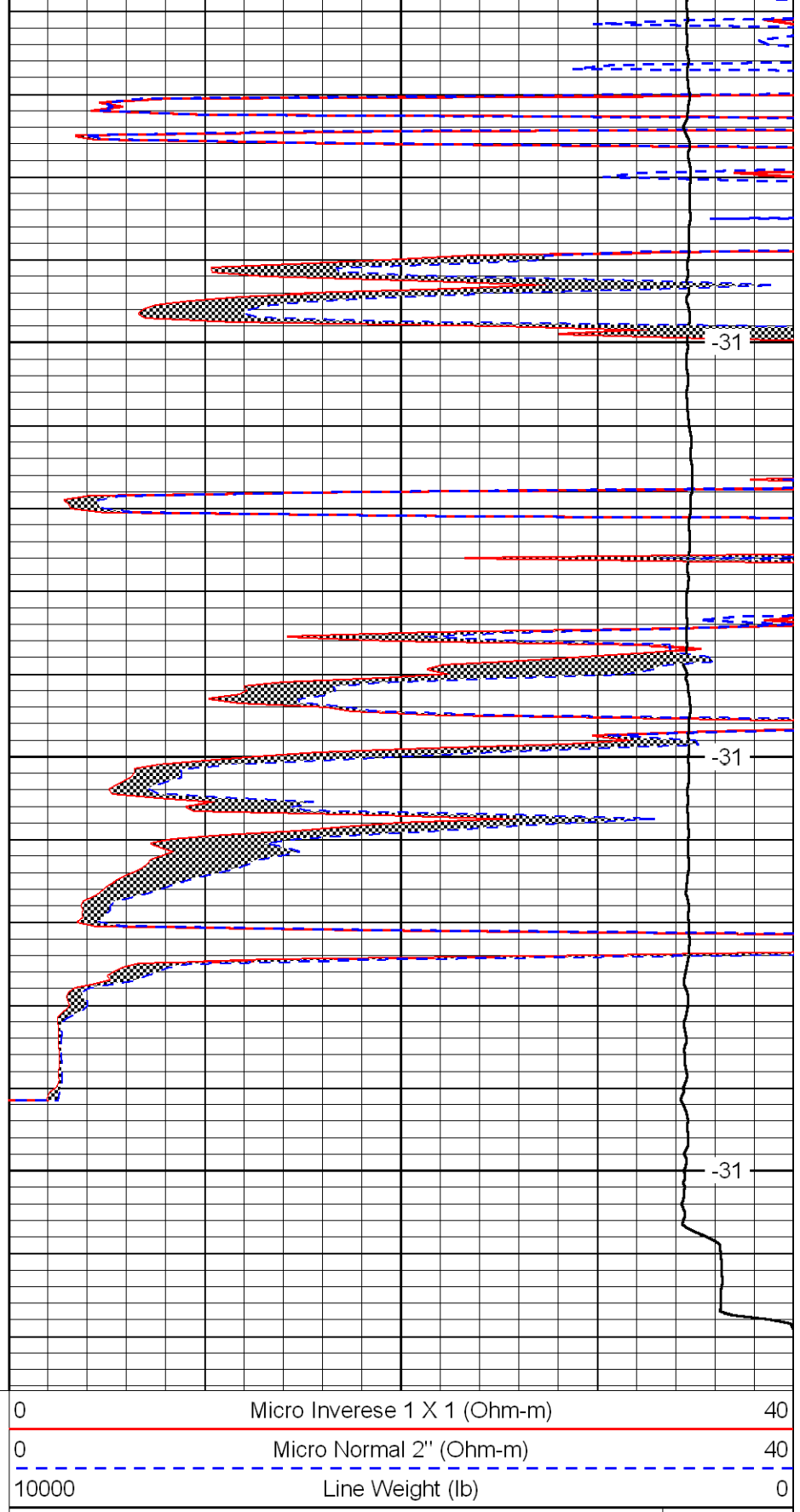
-32



3250

3300

3350



-31

-31

-31

LSPD
(ft/min)