



Dual Compensated  
Porosity Log

DIGITAL LOG (785) 625-3858

API No. 15-009-25,319-00-00

Company Credo Petroleum Corporation  
Well Klepper CPC No. 1-9  
Field Ahrens North  
County Barton State Kansas

Location 1230' FNL & 2555' FEL

Sec: 9 Twp: 19 S Rge: 11 W

Other Services  
DIL  
MEL/BHCS

Permanent Datum Ground Level Elevation 1768  
Log Measured From Kelly Bushing 5 Ft. Above Perm. Datum  
Drilling Measured From Kelly Bushing

Elevation  
K.B. 1773  
D.F. 1768  
G.L. 1768

Date 6/9/2009

Run Number One

Type Log CNL / CDL

Depth Driller 3360

Depth Logger 3357

Bottom Logged Interval 3336

Top Logged Interval 250

Type Fluid In Hole Chemical

Salinity, PPM CL 7500

Density 9.1

Level Full

Max. Rec. Temp. F 112

Operating Rig Time 6 Hours

Equipment -- Location 4 Hays

Recorded By K Bange J Schuler

Witnessed By Jim Musgrove Lee Brock

Run No	Bit	Borehole Record		Casing Record	
		From	To	From	To
1	12.25	00	260	8.625	24#
2	7.875	260	3360		

<<< Fold Here >>>

All interpretations are opinions based on inferences from electrical or other measurements and we cannot and do not guarantee the accuracy or correctness of any interpretation, and we shall not, except in the case of gross or willful negligence on our part, be liable or responsible for any loss, costs, damages, or expenses incurred or sustained by anyone resulting from any interpretation made by any of our officers, agents or employees. These interpretations are also subject to our general terms and conditions set out in our current Price Schedule.

Comments

Thank you for using Log-Tech, Inc.  
(785) 625-3858

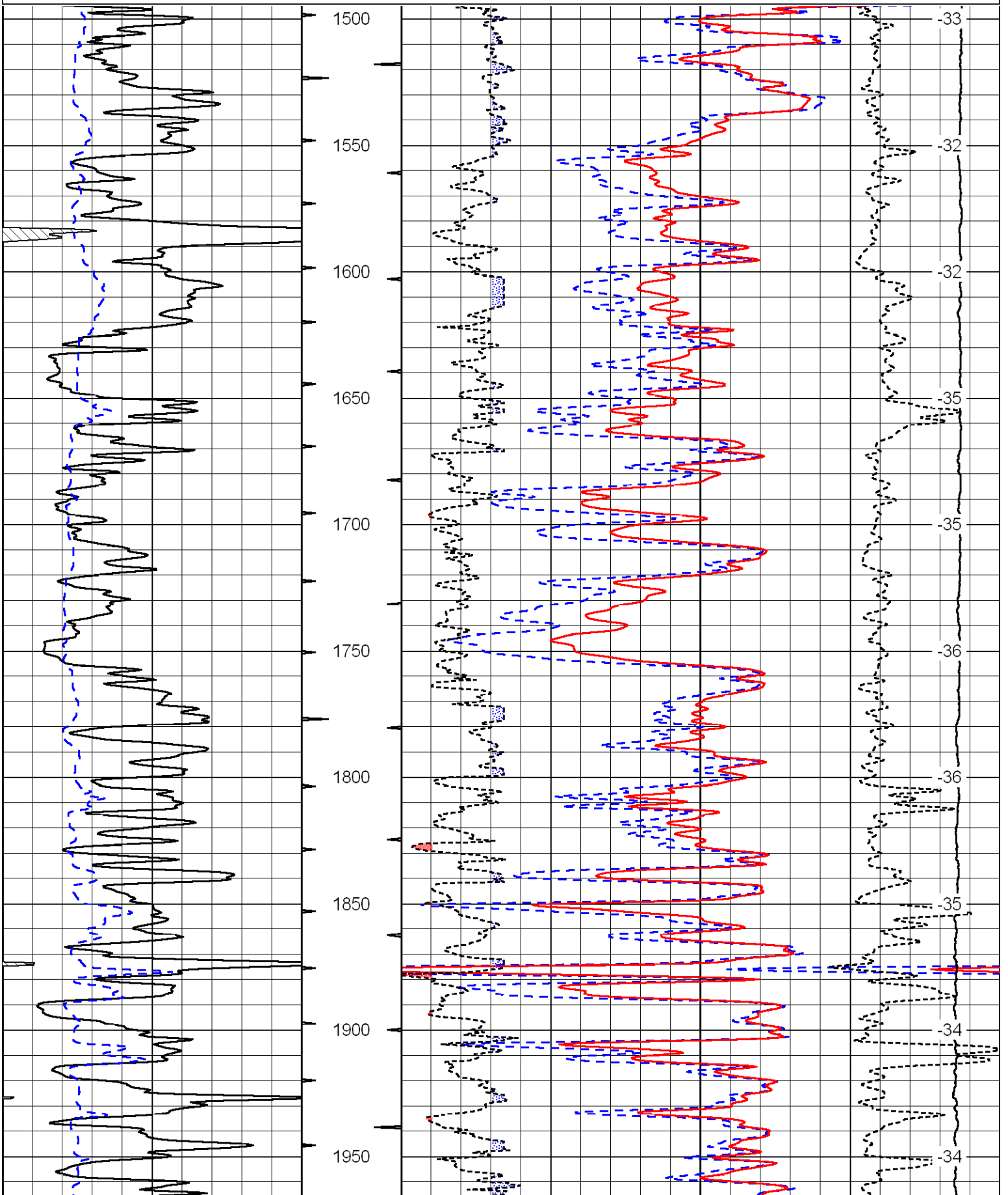
Ellenwood East Side to Hirsch, 5 North to NE 40, 2 East, South into

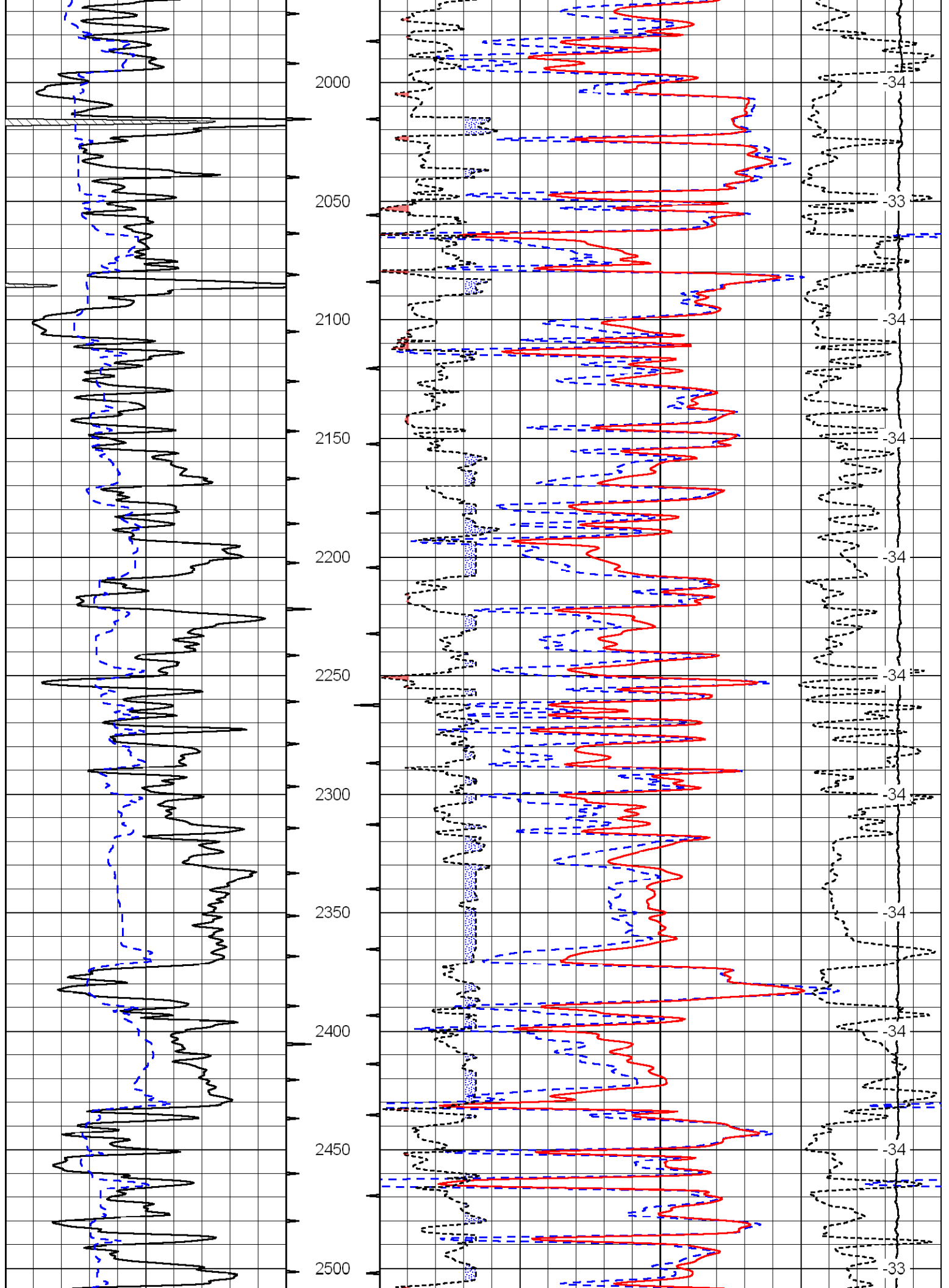
Database File: c:\warrior\data\credo\_klepper cpc no. 1-9\credo60909hd.db  
Dataset Pathname: dil/cred2in  
Presentation Format: cdl  
Dataset Creation: Tue Jun 09 05:42:22 2009  
Charted by: Depth in Feet scaled 1:600

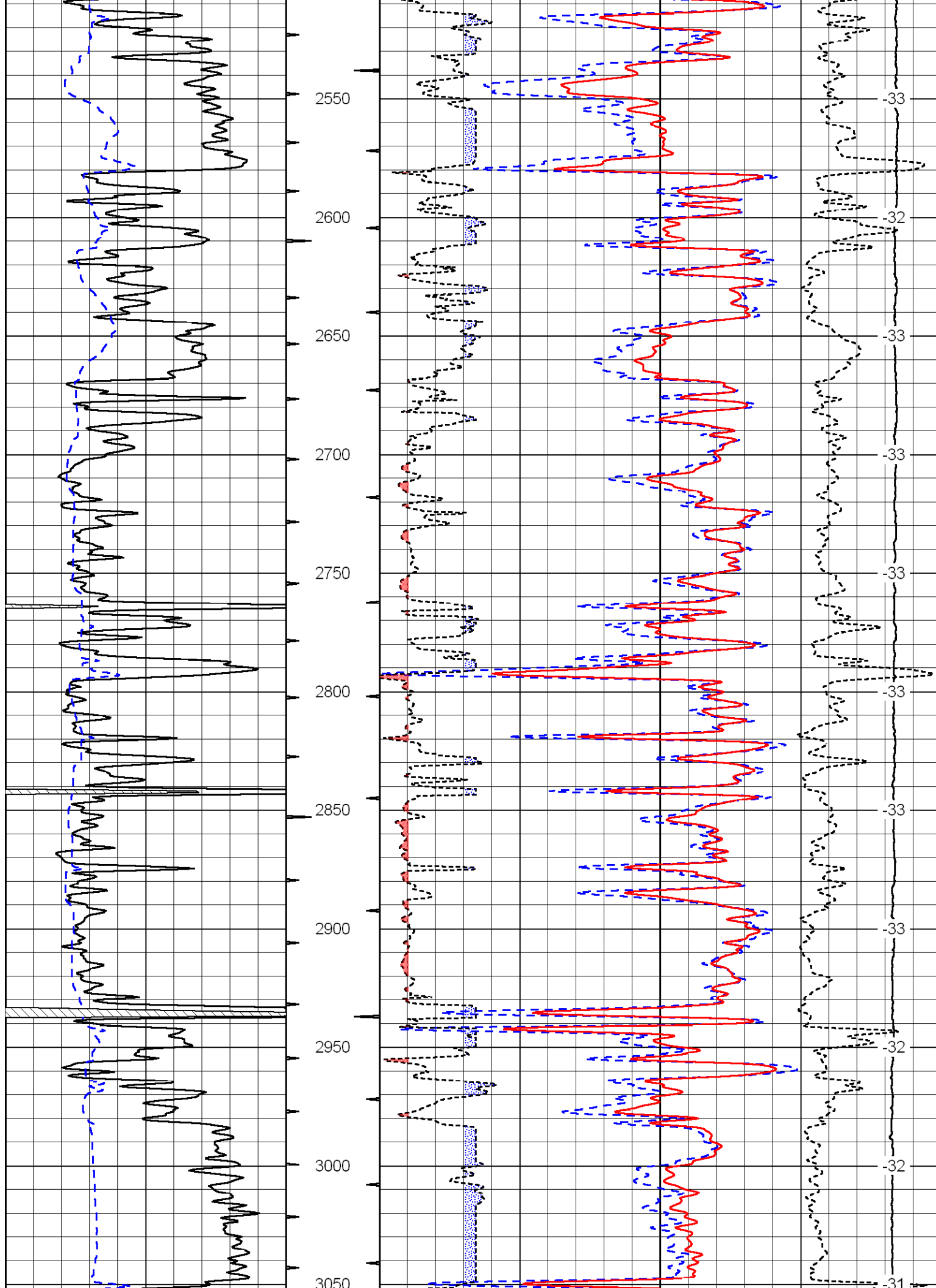
0	Gamma Ray	150
6	Caliper (in)	16

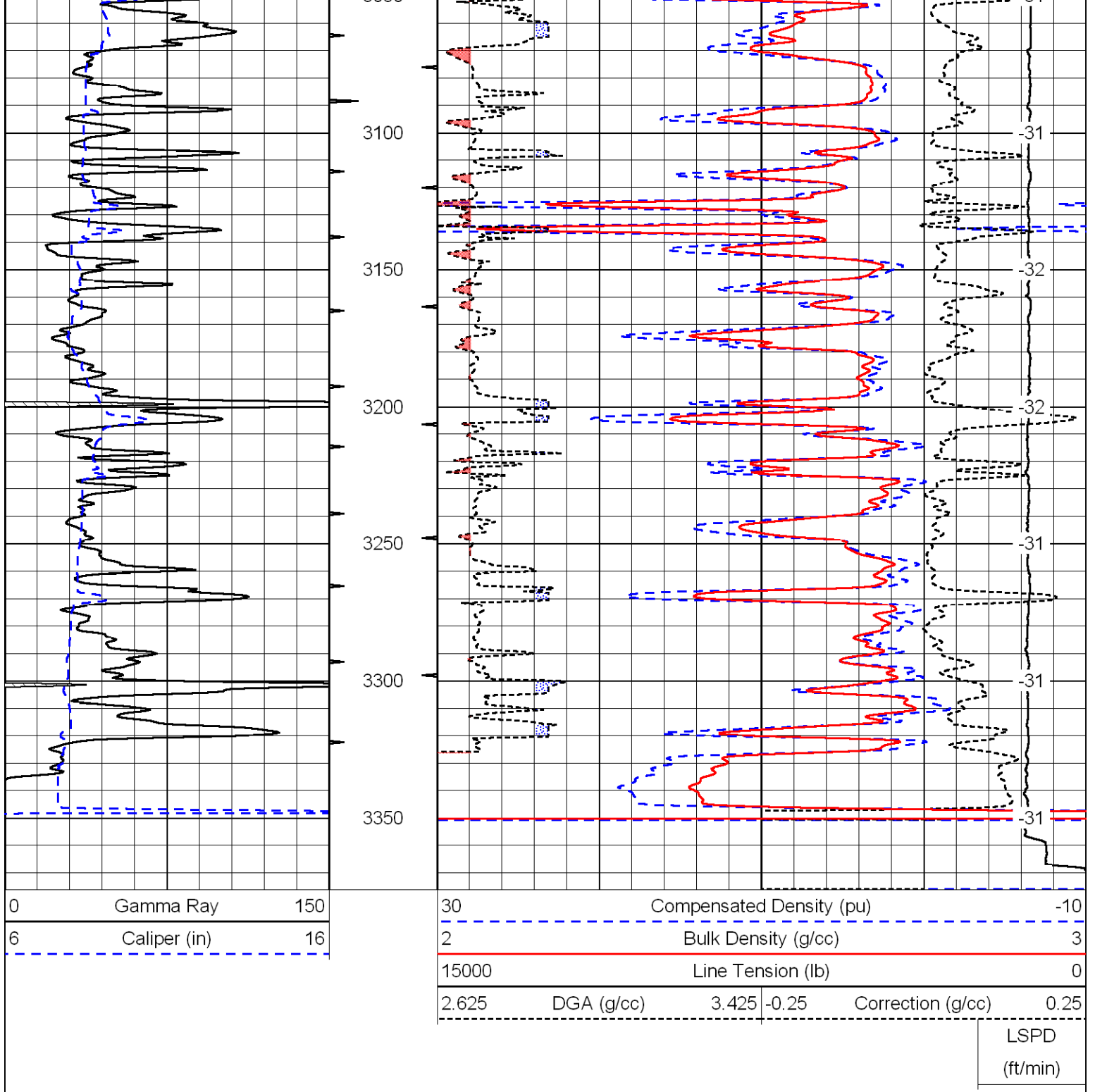
30	Compensated Density (pu)		-10
2	Bulk Density (g/cc)		3
15000	Line Tension (lb)		0
2.625	DGA (g/cc)	3.425	-0.25
	Correction (g/cc)		0.25

LSPD  
(ft/min)

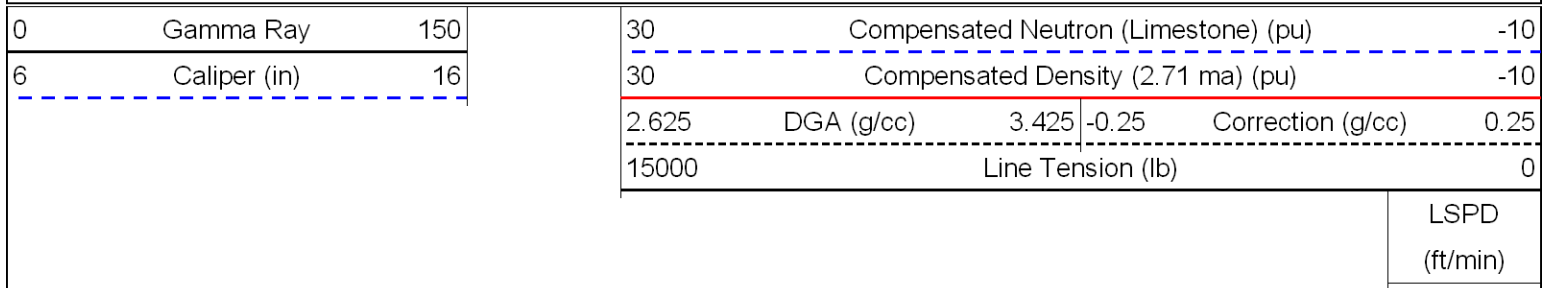


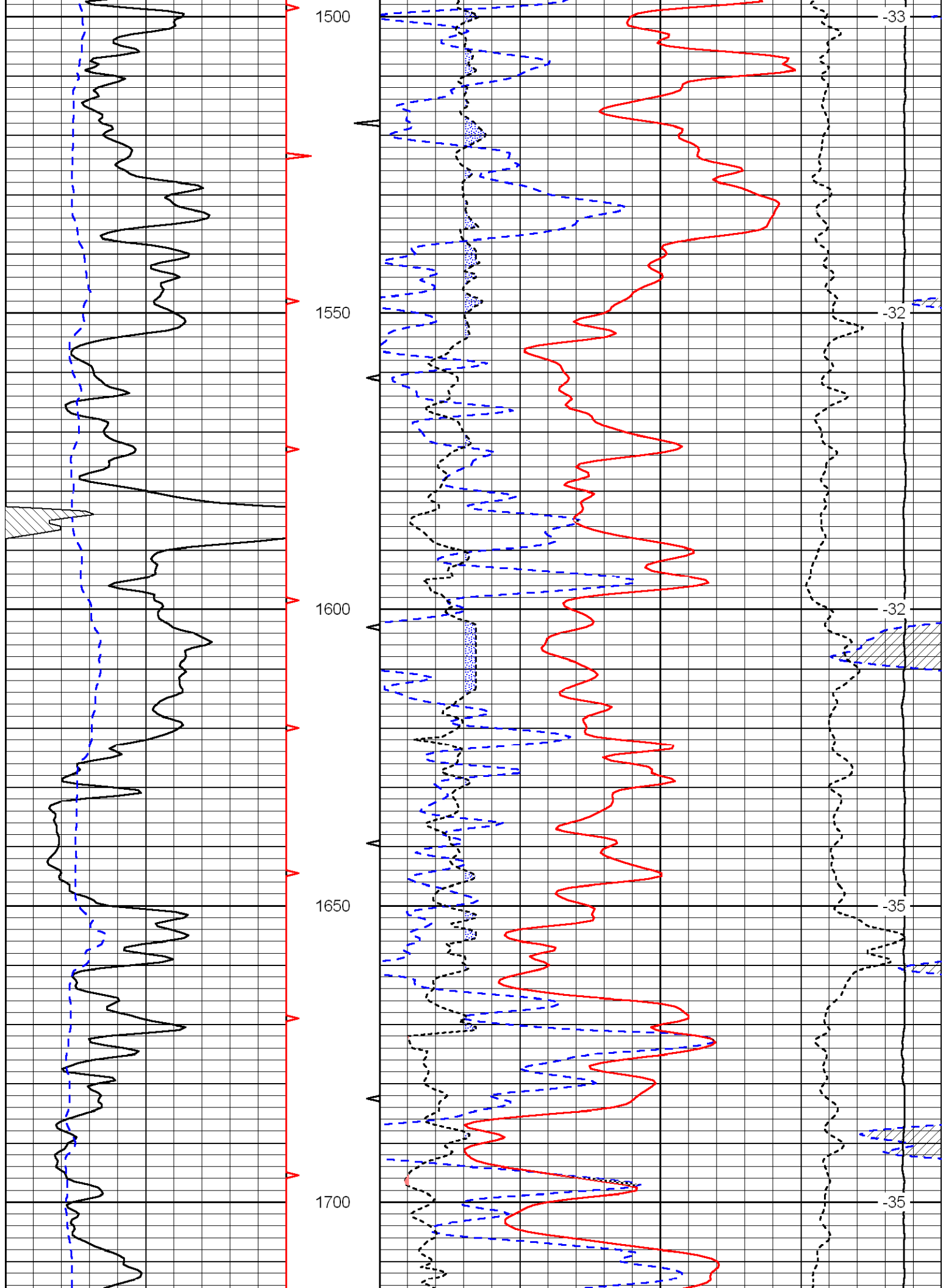


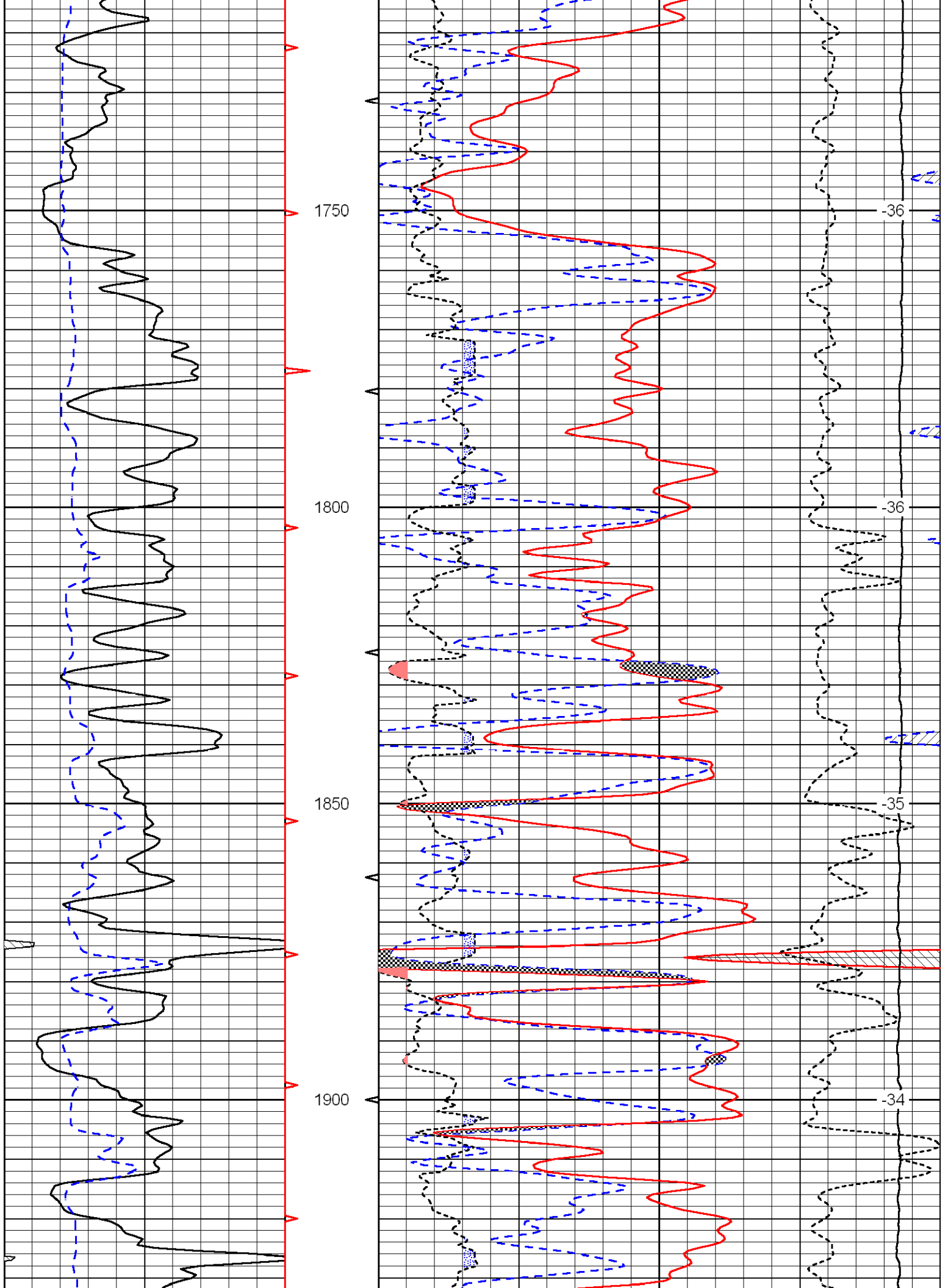


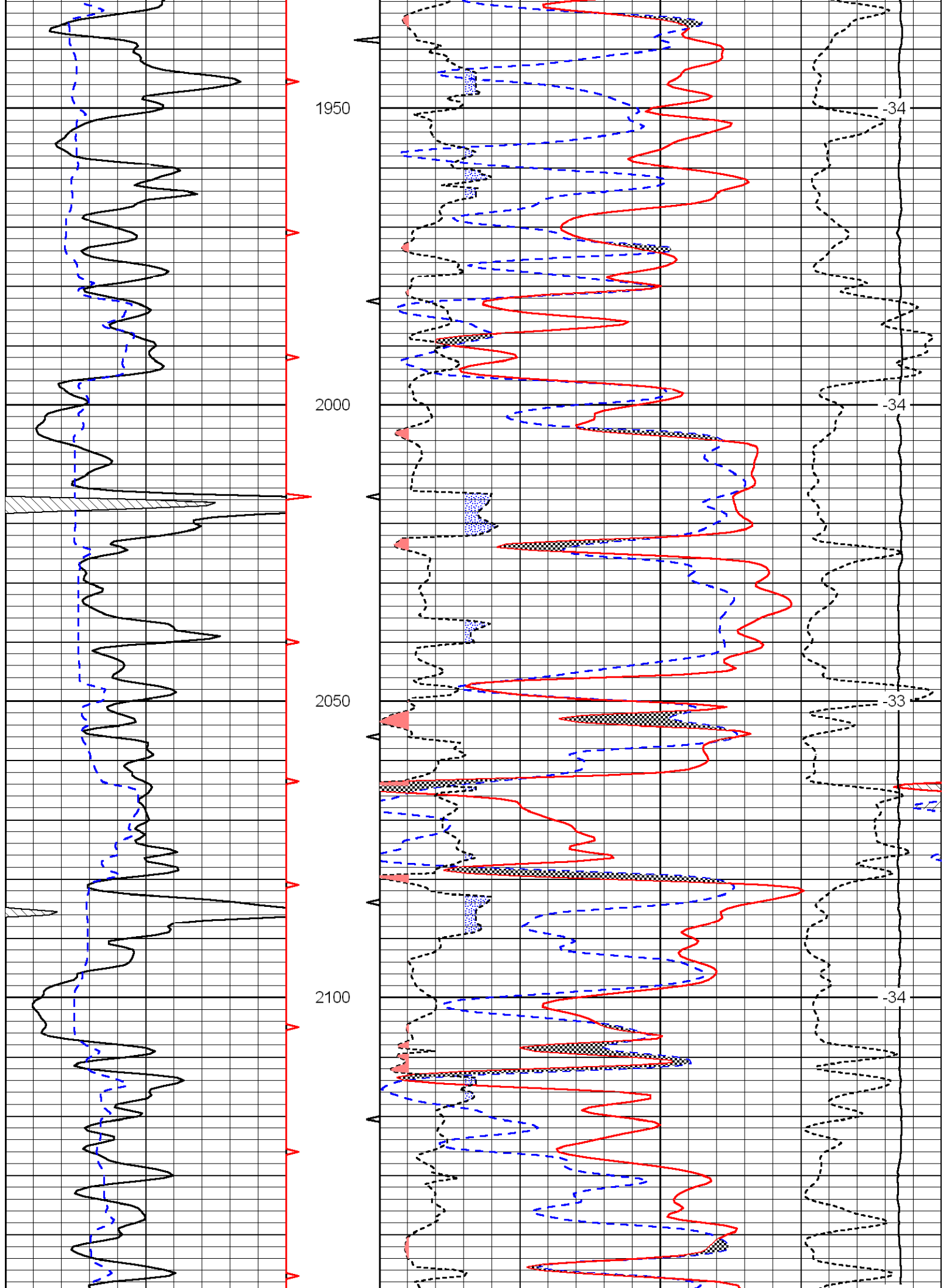


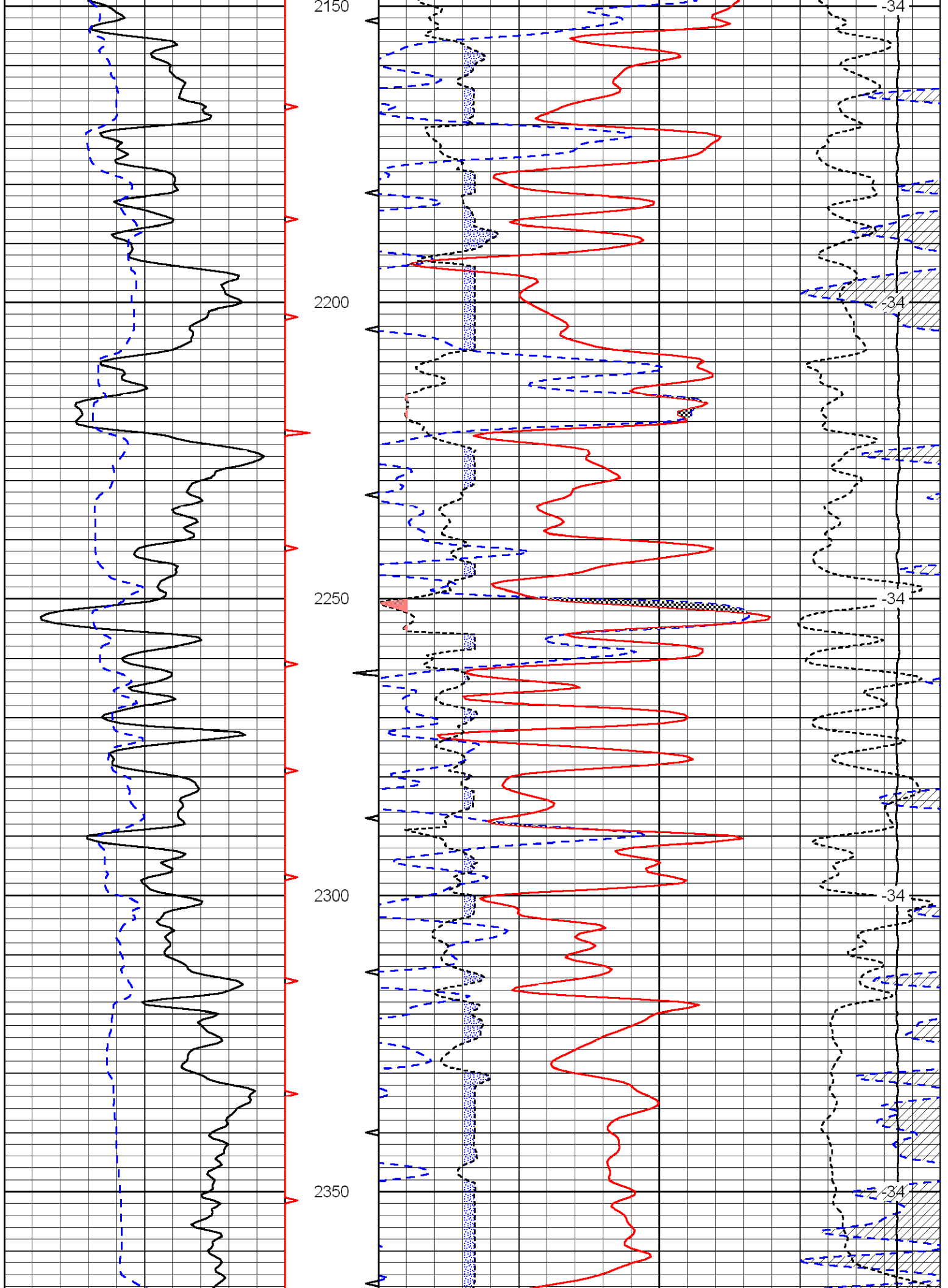
Database File: c:\warrior\data\credo\_klepper cpc no. 1-9\credo60909hd.db  
 Dataset Pathname: dil/cred2in  
 Presentation Format: cndlspec  
 Dataset Creation: Tue Jun 09 05:42:22 2009  
 Charted by: Depth in Feet scaled 1:240

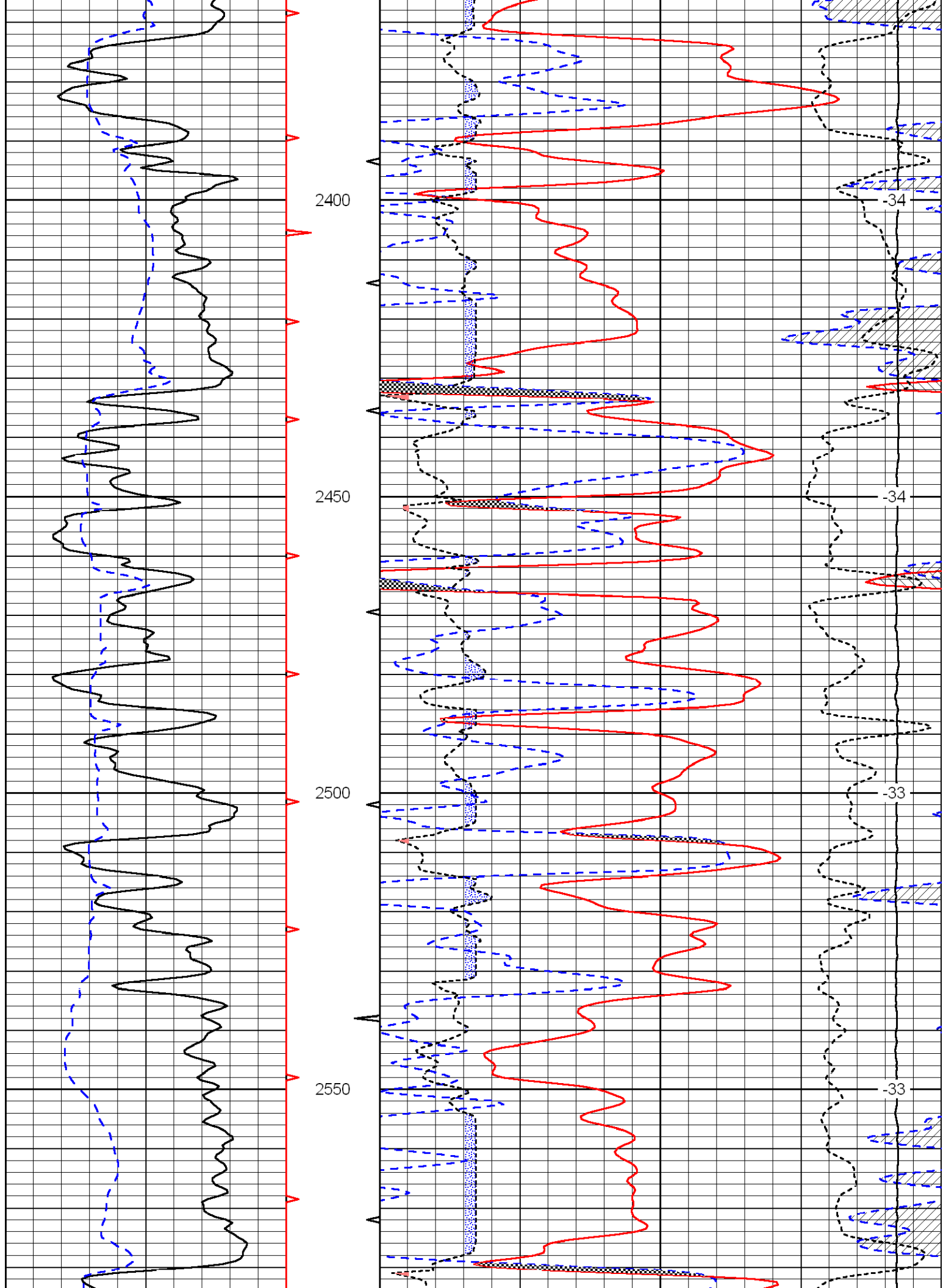


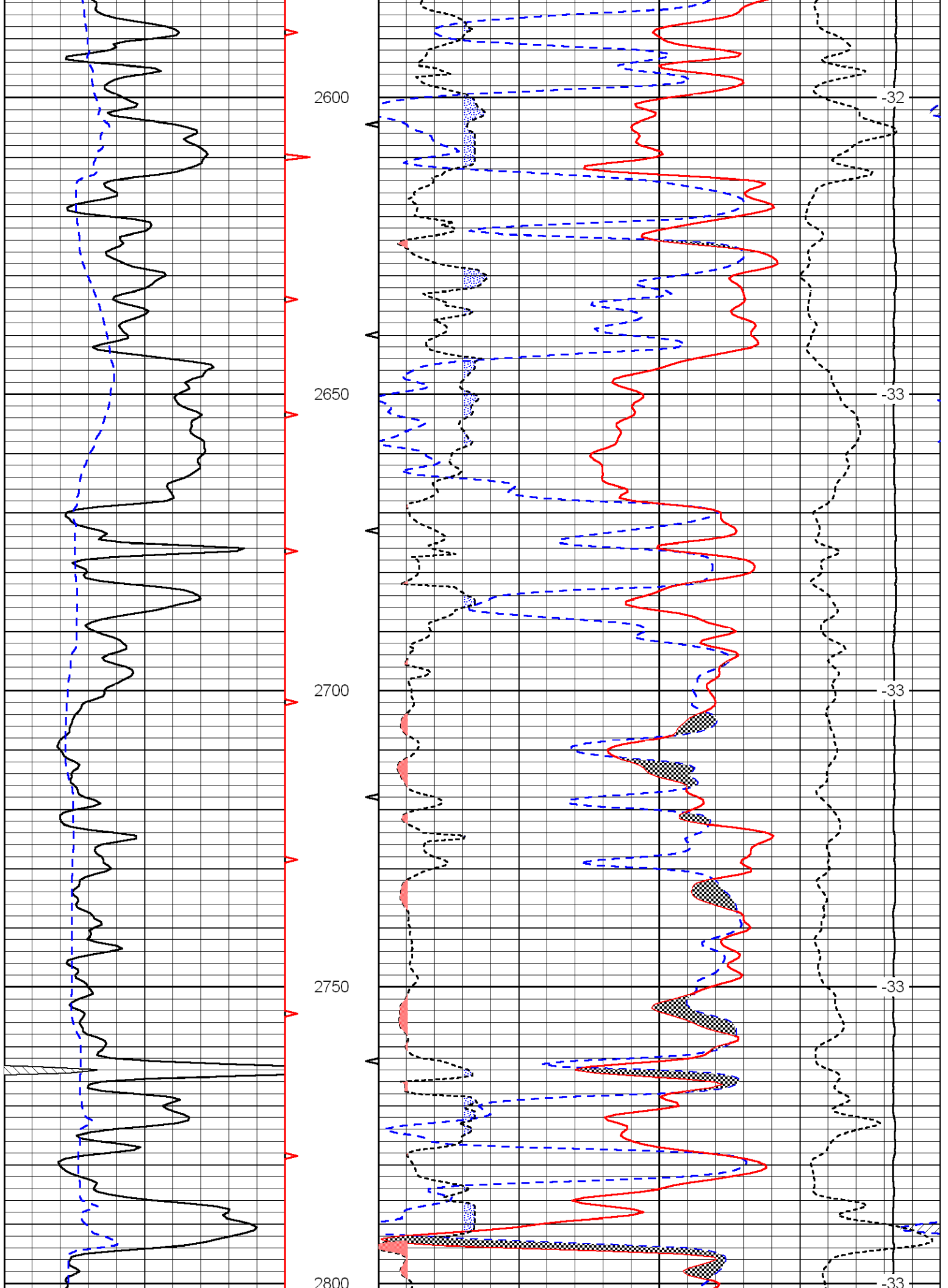




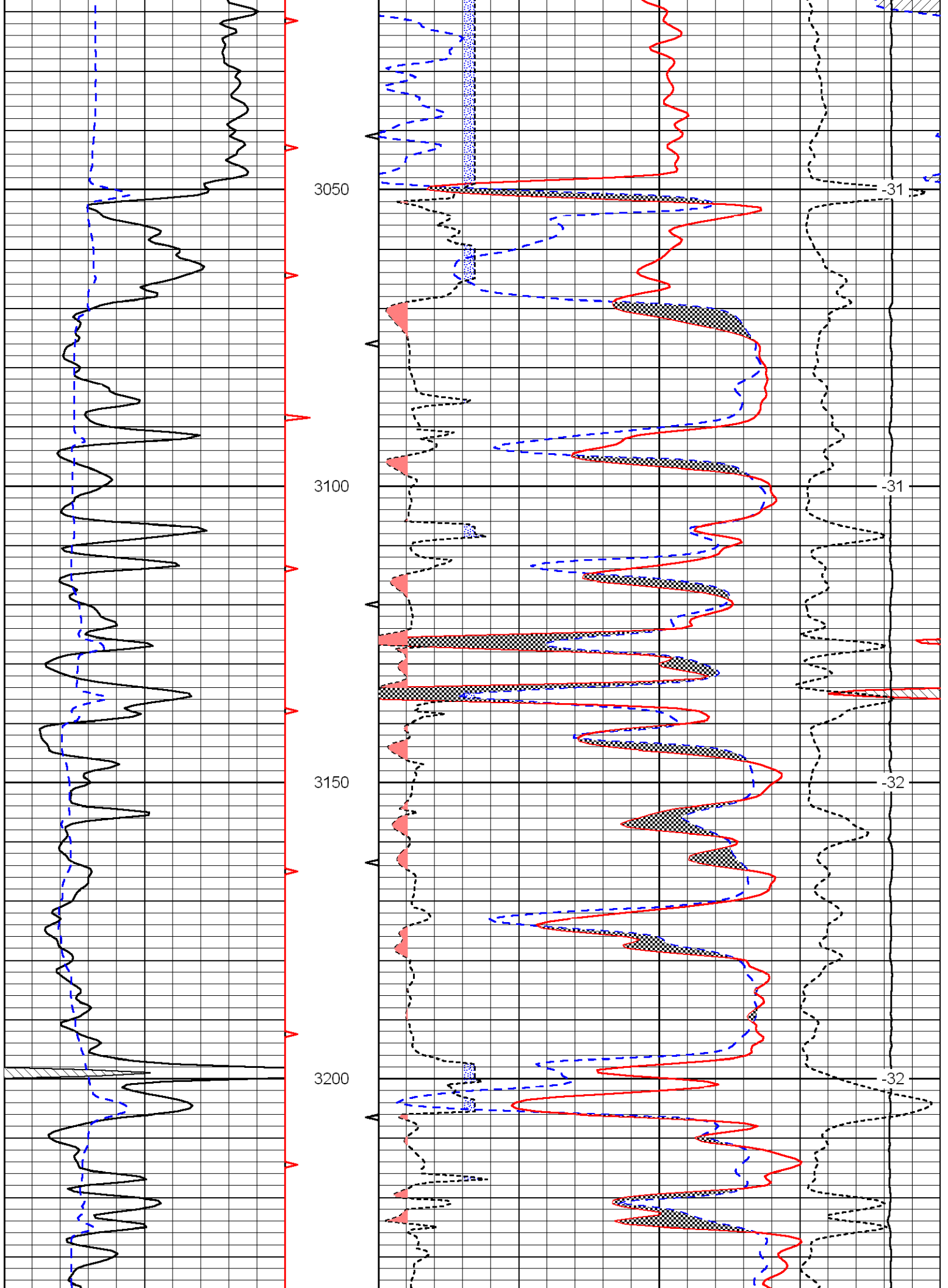


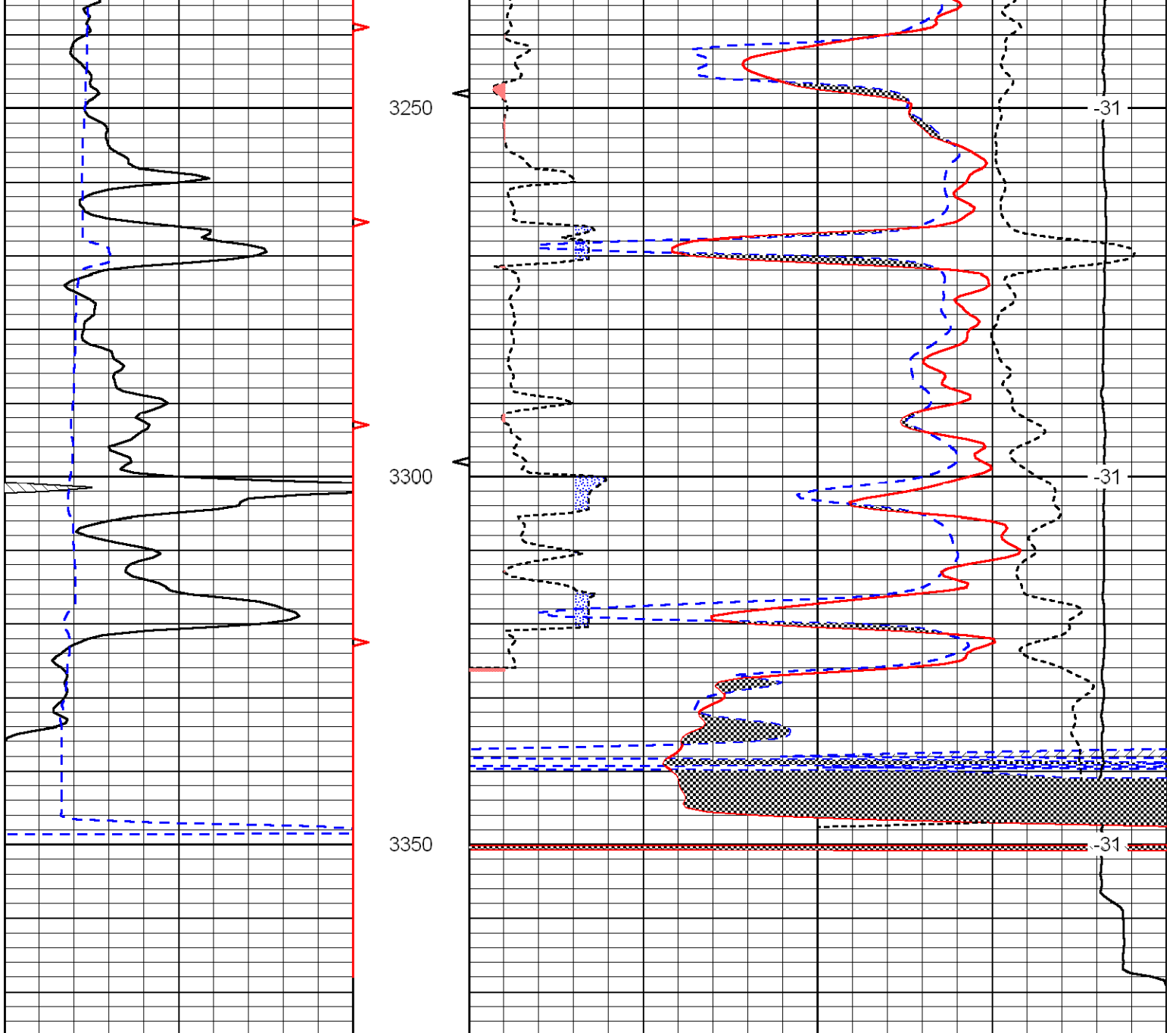












0	Gamma Ray	150
6	Caliper (in)	16

30	Compensated Neutron (Limestone) (pu)			-10	
30	Compensated Density (2.71 ma) (pu)			-10	
2.625	DGA (g/cc)	3.425	-0.25	Correction (g/cc)	0.25
15000	Line Tension (lb)			0	

LSPD  
(ft/min)