



Dual Induction Log

DIGITAL LOG (785) 625-3858

API No.	15-009-25,319-00-00	
Company	Credo Petroleum Corporation	
Well	Klepper CPC No. 1-9	
Field	Ahrens North	
County	Barton	State Kansas
Location	1230' FNL & 2555' FEL	
Sec: 9	Twp: 19 S	Rge: 11 W
Permanent Datum	Ground Level	Elevation 1768
Log Measured From	Kelly Bushing	5 Ft. Above Perm. Datum
Drilling Measured From	Kelly Bushing	K.B. 1773
		D.F. 1768
		G.L. 1768

Date	6/9/2009
Run Number	One
Depth Driller	3360
Depth Logger	3357
Bottom Logged Interval	3356
Top Log Interval	250 Feet
Casing Driller	8.625 @ 260
Casing Logger	259
Bit Size	7.875
Type Fluid in Hole	Chemical
Salinity, ppm CL	7500
Density / Viscosity	9.1 49
pH / Fluid Loss	9.5 9.6
Source of Sample	Flowline
Rm @ Meas. Temp	0.2 @ 73
Rmf @ Meas. Temp	.15 @ 73
Rmc @ Meas. Temp	.27 @ 73
Source of Rmf / Rmc	Charts
Rm @ BHT	.13 @ 112
Operating Rig Time	6 Hours
Max Rec. Temp. F	112
Equipment Number	4
Location	Hays
Recorded By	K Bange
Witnessed By	Jim Musgrave

<<< Fold Here >>>

All interpretations are opinions based on inferences from electrical or other measurements and we cannot and do not guarantee the accuracy or correctness of any interpretation, and we shall not, except in the case of gross or willful negligence on our part, be liable or responsible for any loss, costs, damages, or expenses incurred or sustained by anyone resulting from any interpretation made by any of our officers, agents or employees. These interpretations are also subject to our general terms and conditions set out in our current Price Schedule.

Comments

Thank you for using Log-Tech, Inc.
(785) 625-3858

Ellenwood East Side to Hirsch, 5 North to NE 40, 2 East, South into

Database File: c:\warrior\data\credo_klepper cpc no. 1-9\credo60909hd.db
 Dataset Pathname: dil/cred2in
 Presentation Format: dil2in
 Dataset Creation: Tue Jun 09 05:42:22 2009
 Charted by: Depth in Feet scaled 1:600

0 Gamma Ray 150
-200 SP (MV) 0

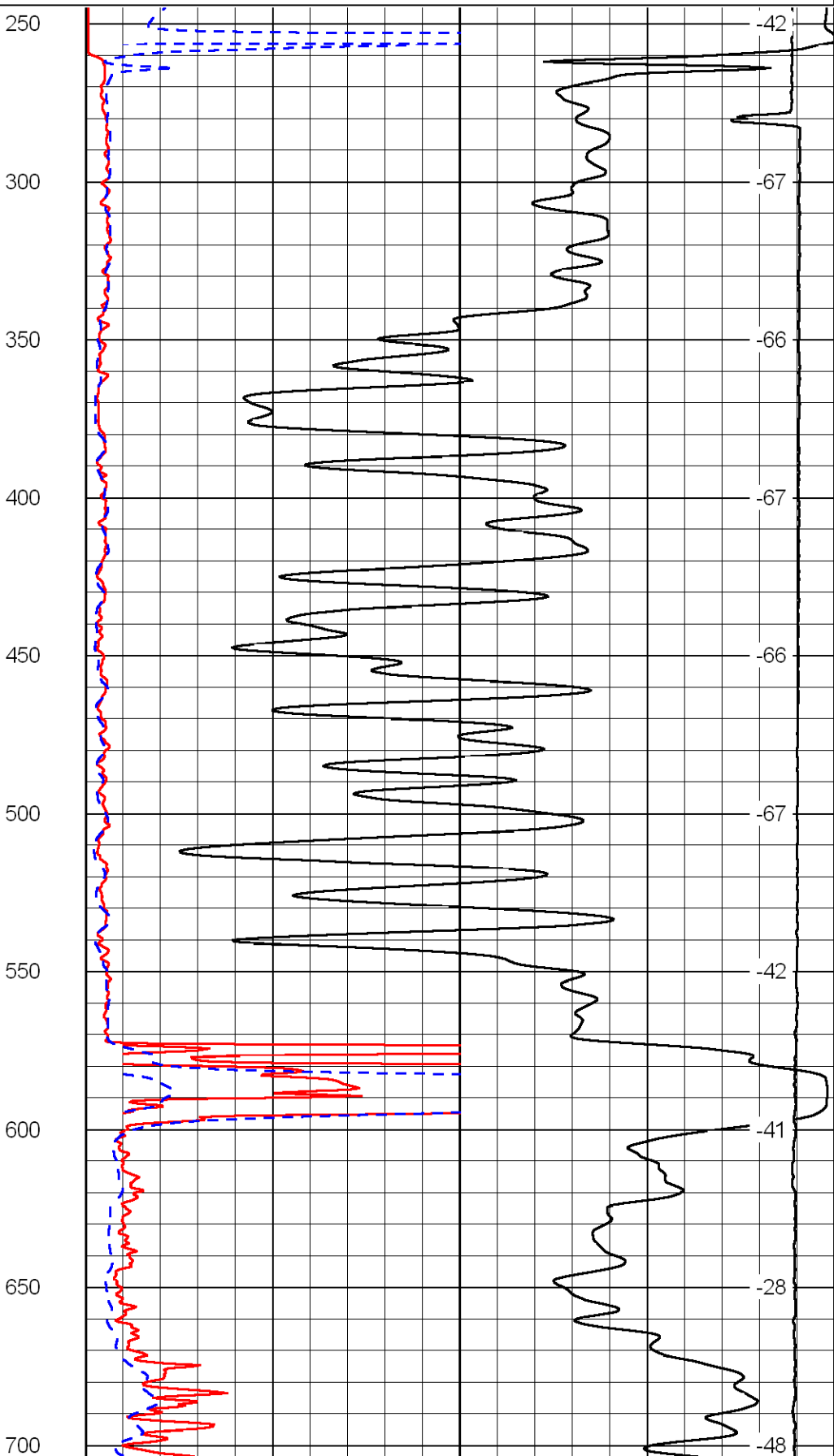
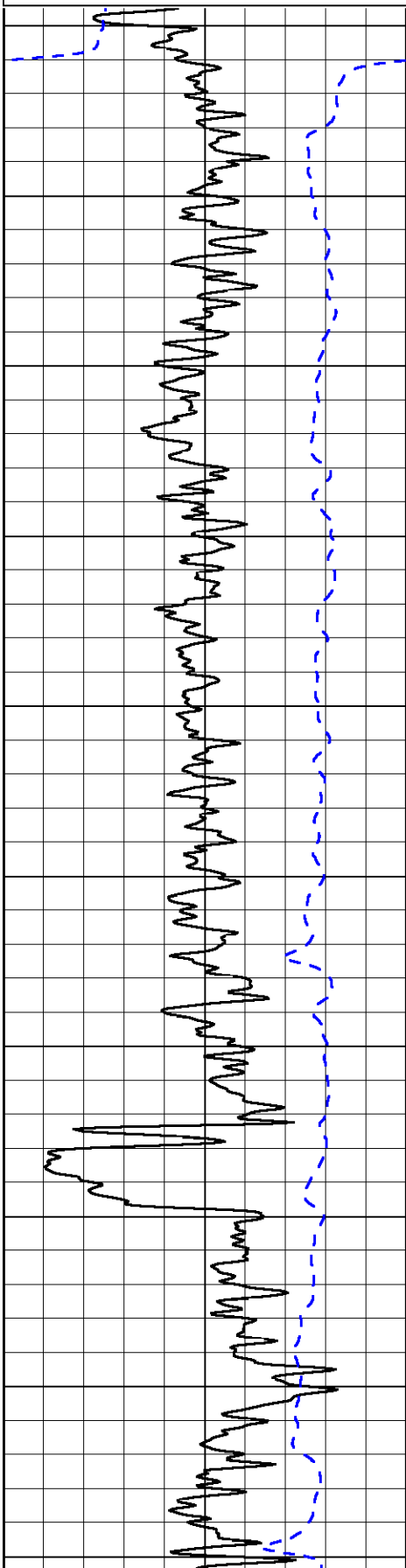
0 Shallow Resistivity (Ohm-m) 50
0 Deep Resistivity (Ohm-m) 50

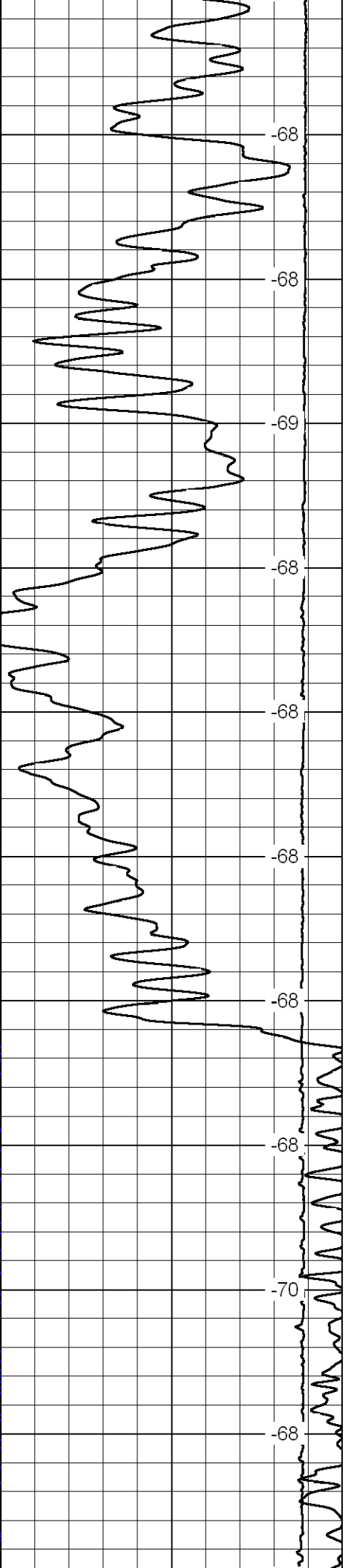
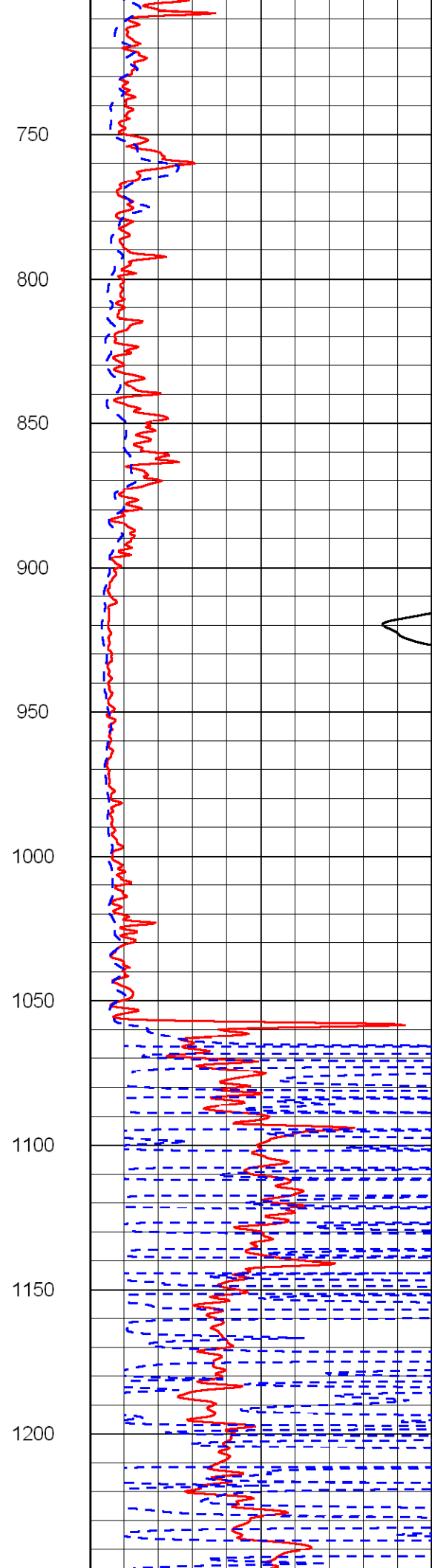
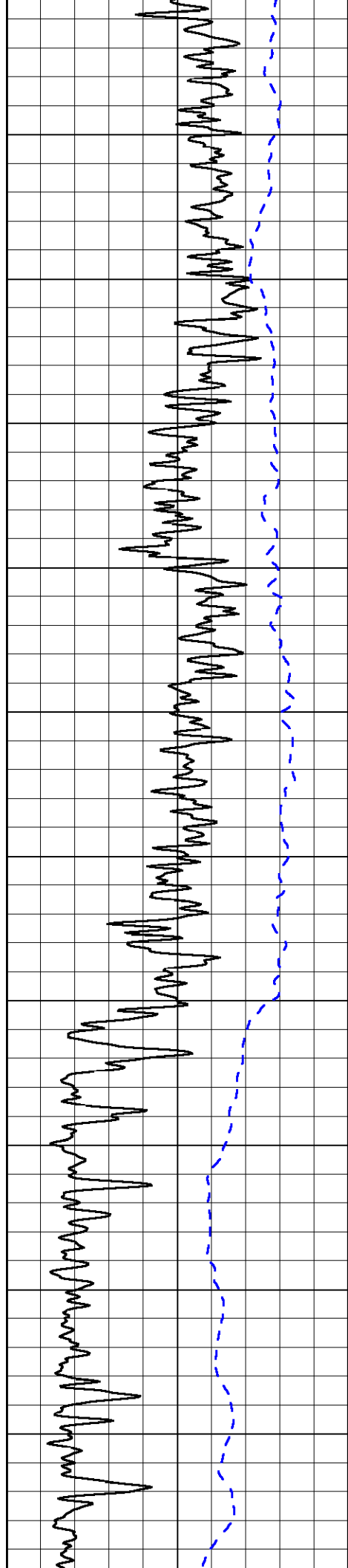
LSPD
(ft/min)

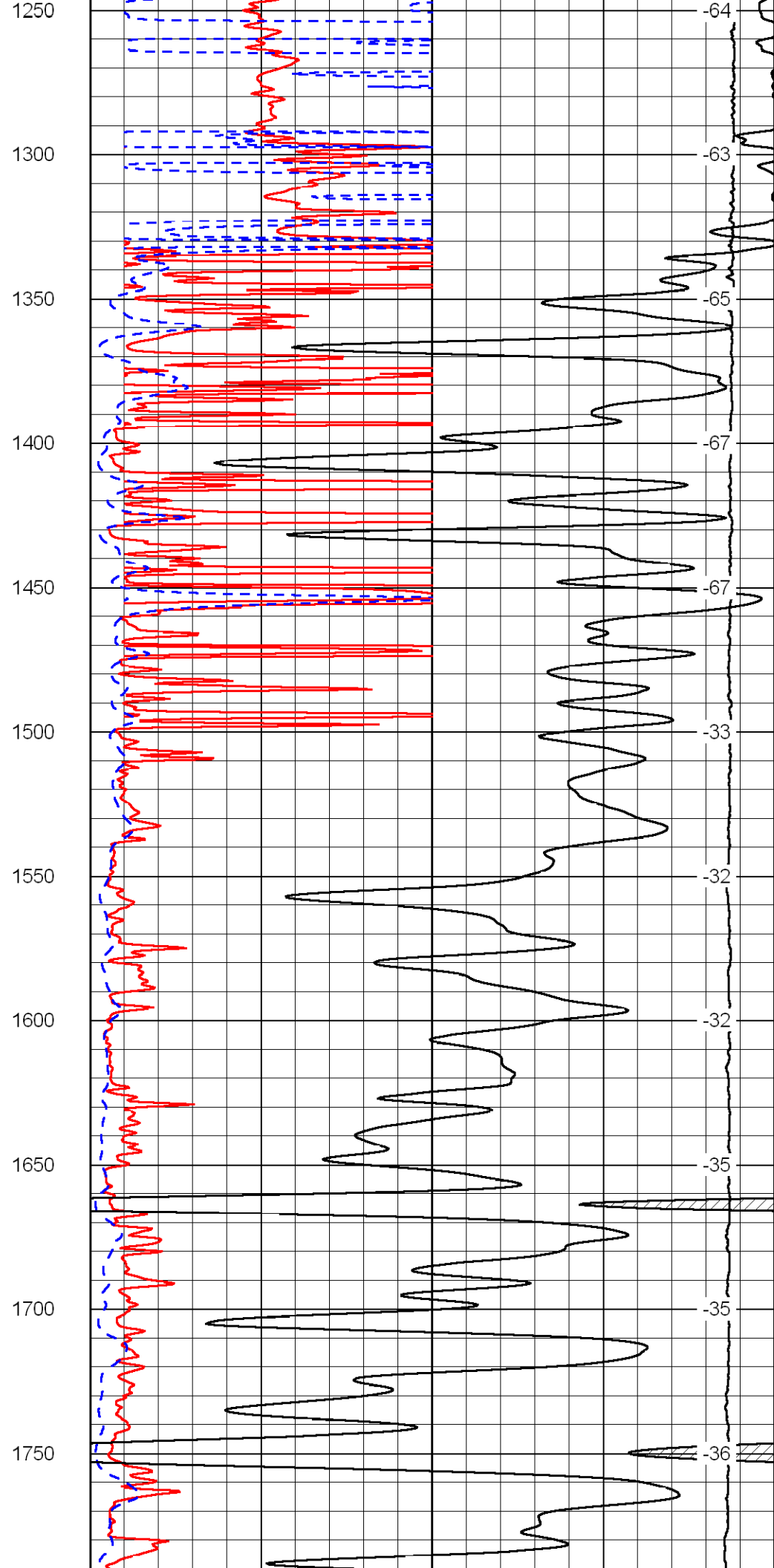
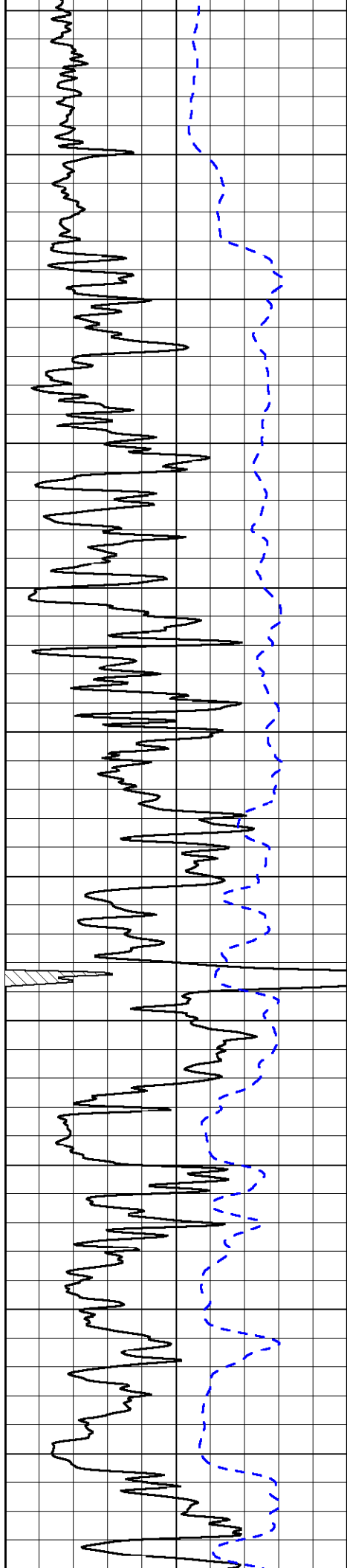
1000 Conductivity (mmho/m) 0

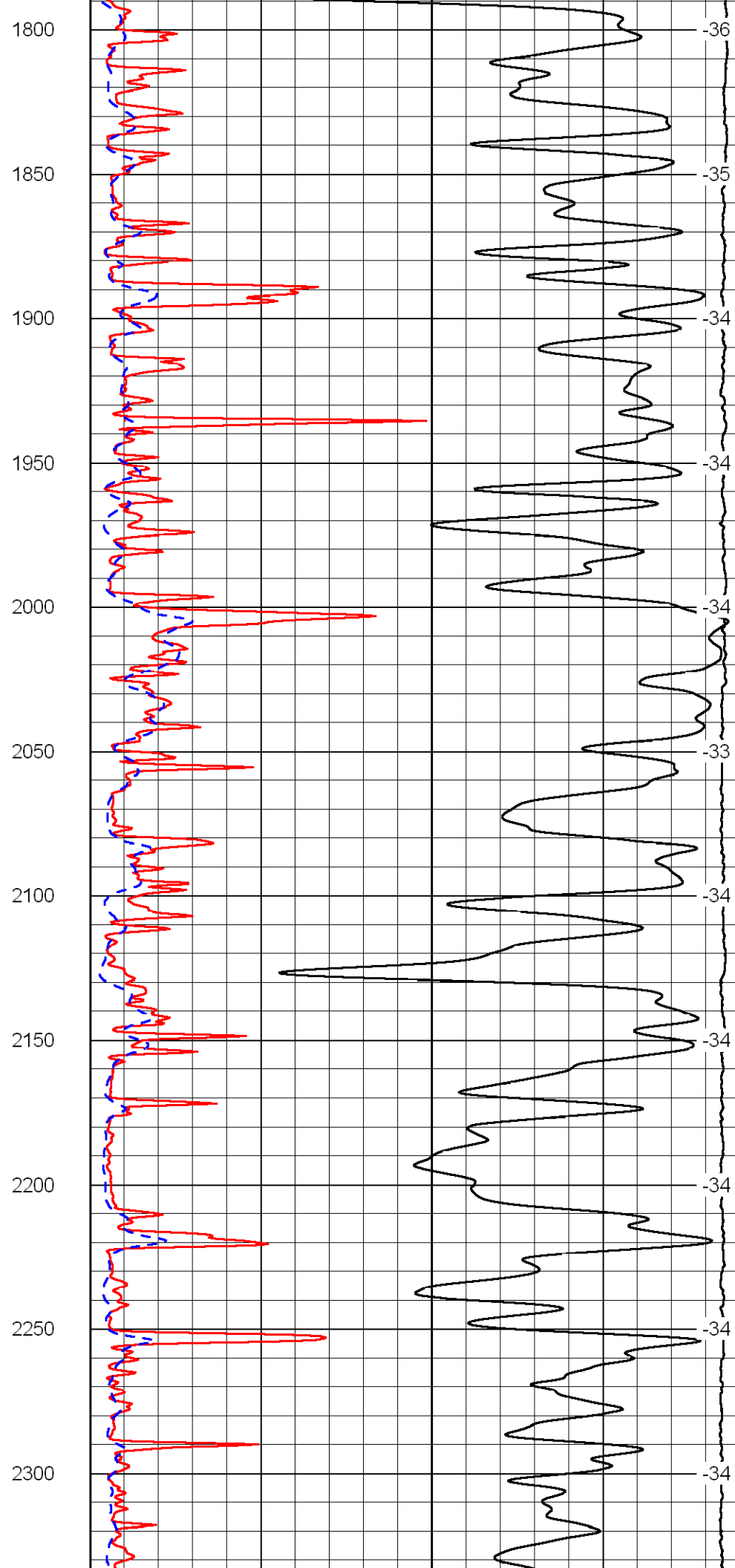
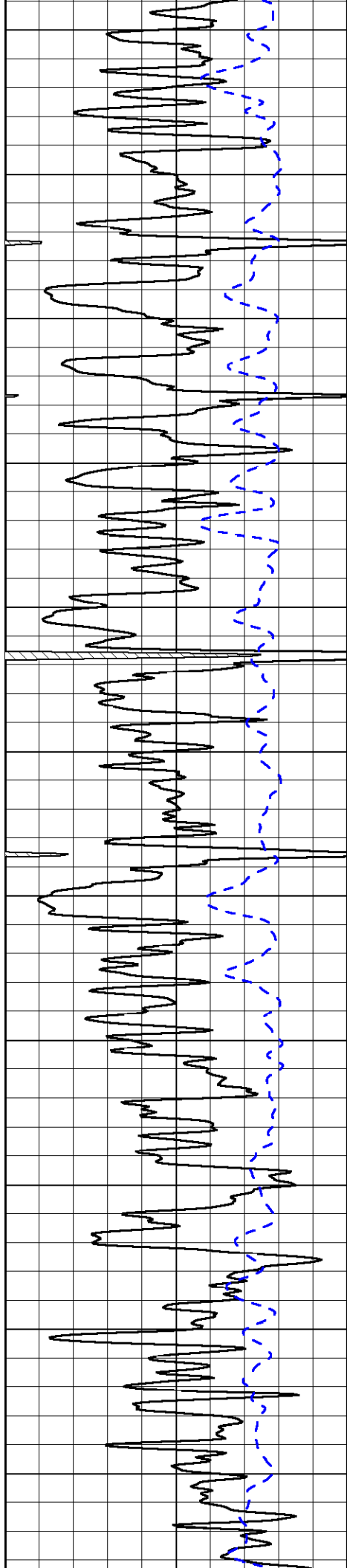
15000 Line Tension (lb) 0

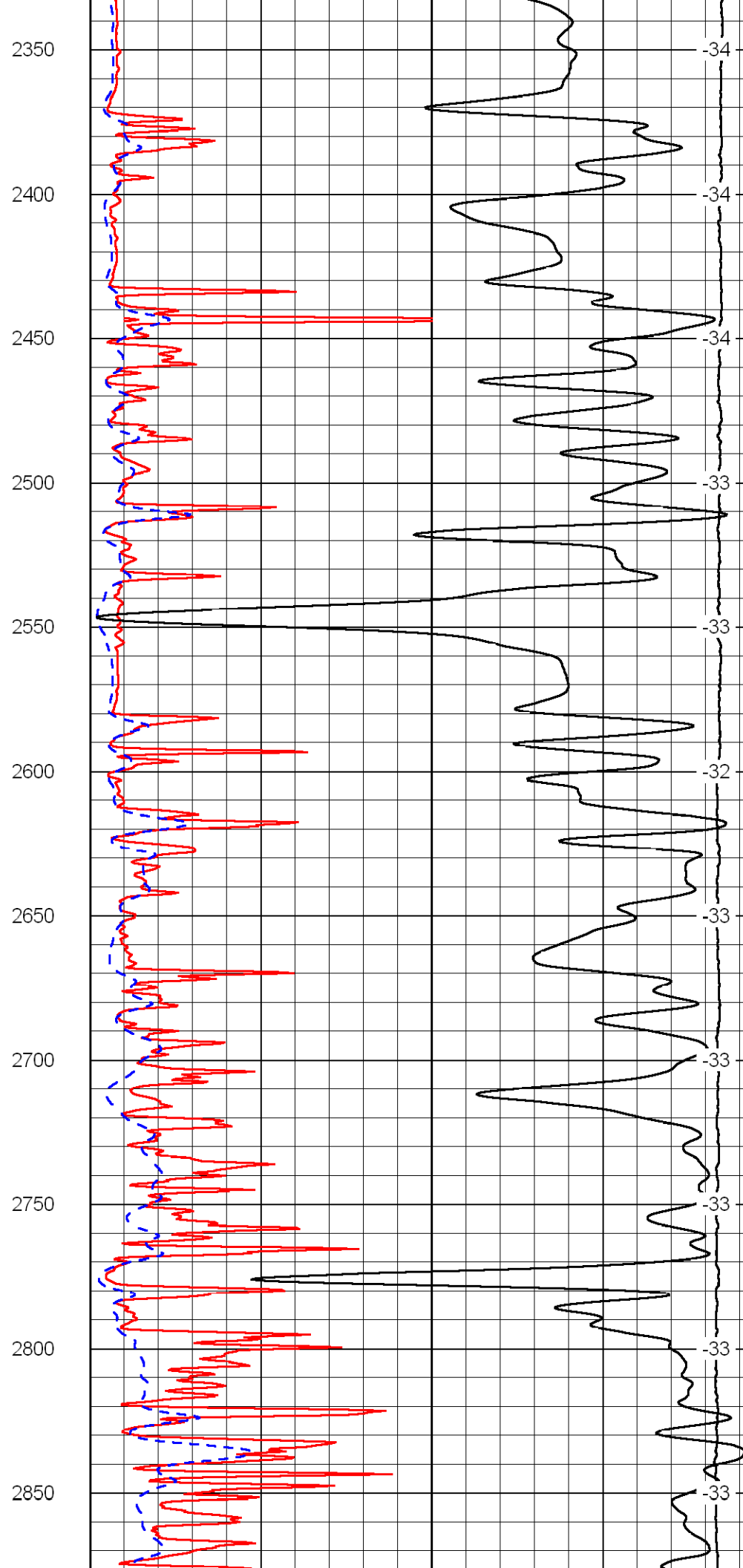
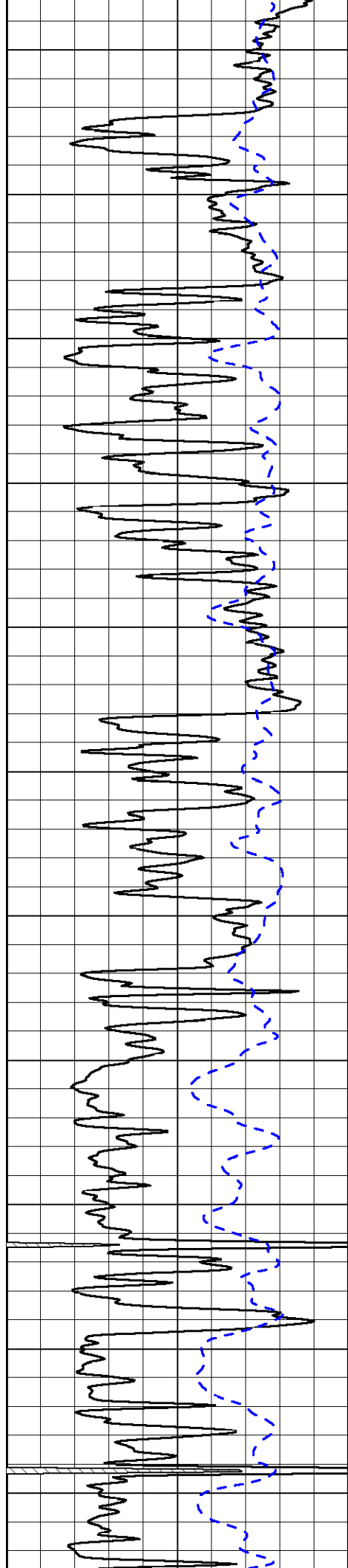
Shallow Resistivity
50 (Ohm-m) 500
50 Deep Resistivity (Ohm-m) 500

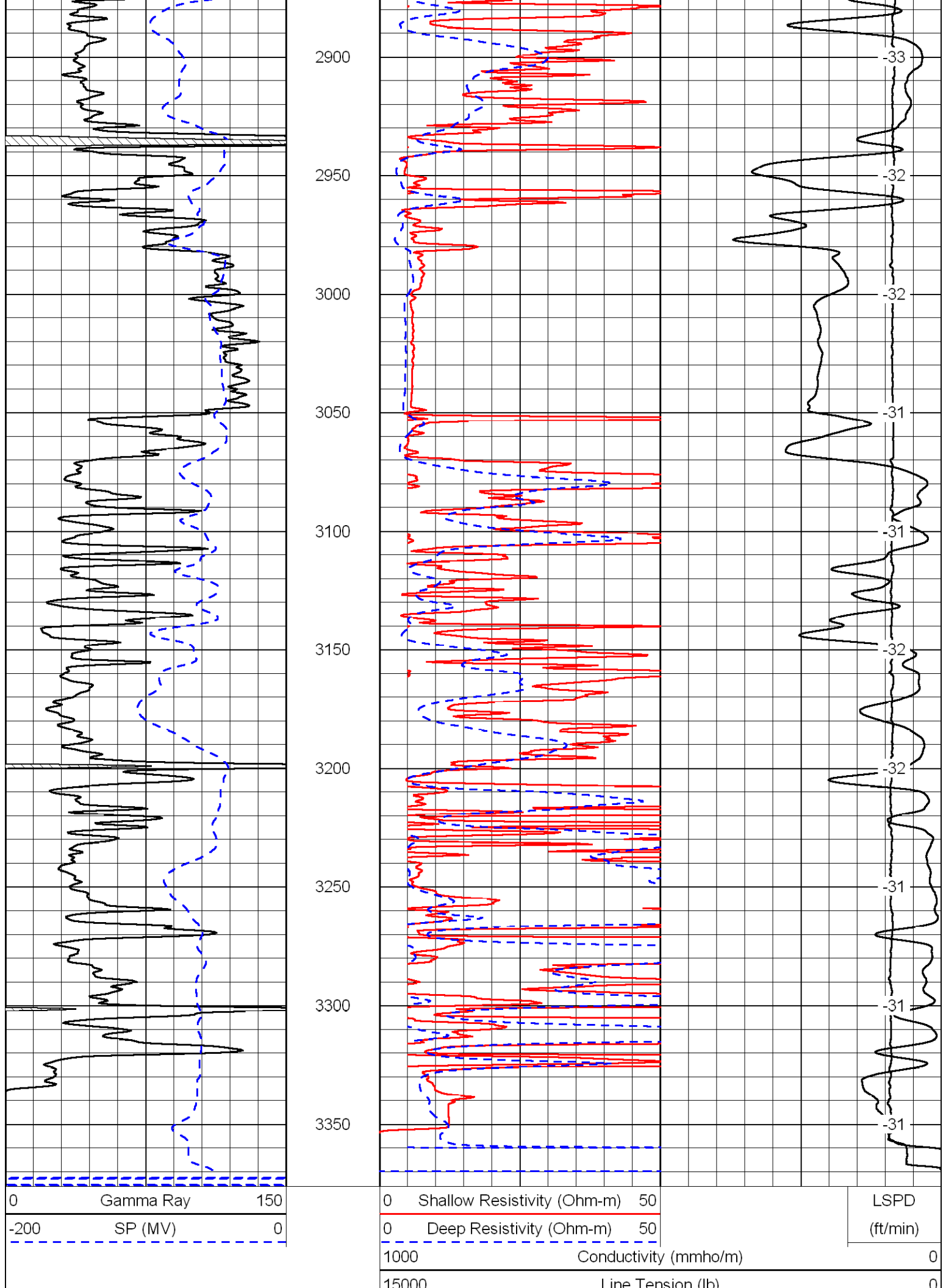












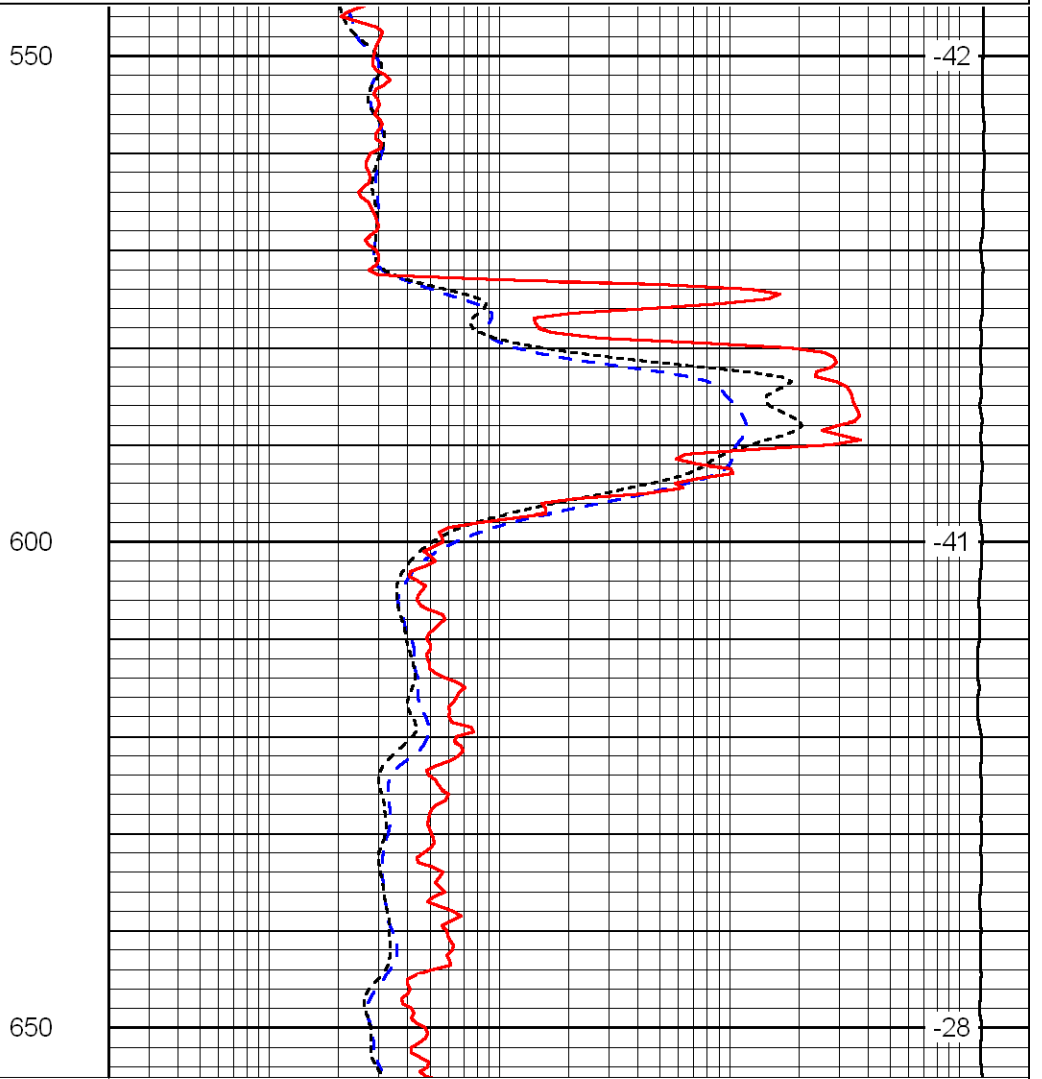
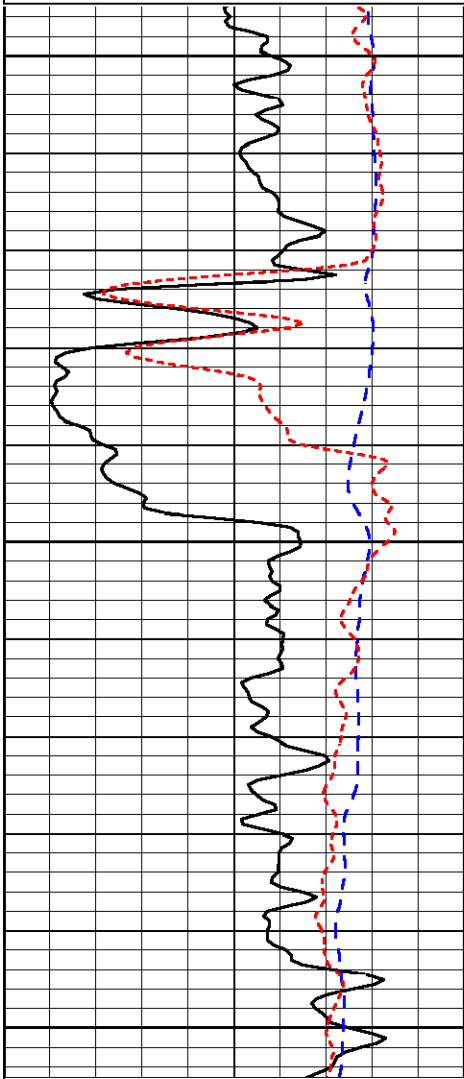
Shallow Resistivity		
50	(Ohm-m)	500
50	Deep Resistivity (Ohm-m)	500

Database File: c:\warrior\data\credo_klepper cpc no. 1-9\credo60909hd.db
 Dataset Pathname: dil/cred2in
 Presentation Format: dil
 Dataset Creation: Tue Jun 09 05:42:22 2009
 Charted by: Depth in Feet scaled 1:240

0	Gamma Ray	150
-200	SP (MV)	0
-160	Rxo / Rt	40

0.2	Deep Resistivity (Ohm-m)	2000
0.2	Medium Resistivity (Ohm-m)	2000
0.2	Shallow Resistivity (Ohm-m)	2000
15000	Line Tension (lb)	0

LSPD
(ft/min)



0	Gamma Ray	150
-200	SP (MV)	0
-160	Rxo / Rt	40

0.2	Deep Resistivity (Ohm-m)	2000
0.2	Medium Resistivity (Ohm-m)	2000
0.2	Shallow Resistivity (Ohm-m)	2000
15000	Line Tension (lb)	0

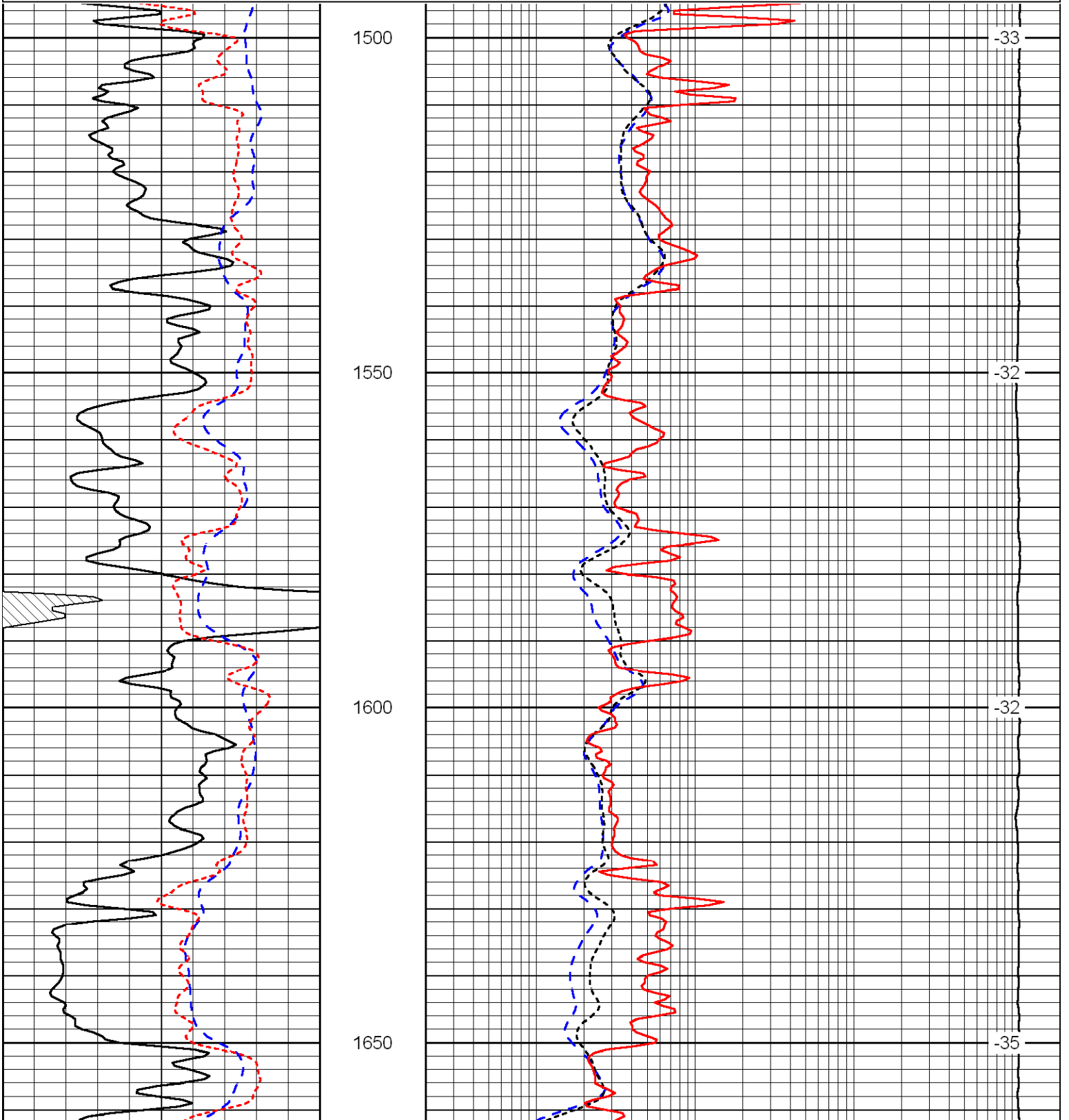
LSPD
(ft/min)

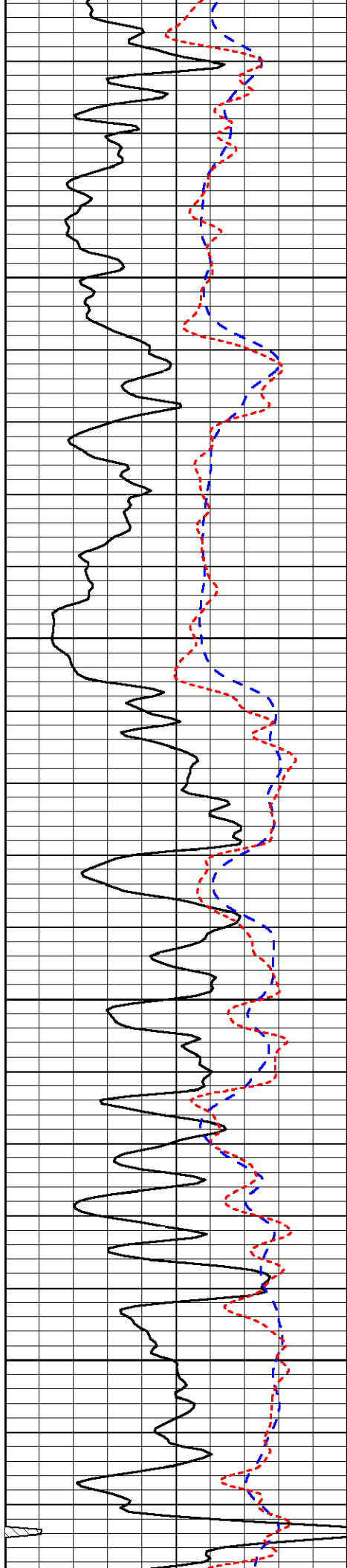
Database File: c:\warrior\data\credo_klepper cpc no. 1-9\credo60909hd.db
 Dataset Pathname: dil/cred2in
 Presentation Format: dil
 Dataset Creation: Tue Jun 09 05:42:22 2009
 Charted by: Depth in Feet scaled 1:240

0	Gamma Ray	150
-200	SP (MV)	0
-160	Rxo / Rt	40

0.2	Deep Resistivity (Ohm-m)	2000
0.2	Medium Resistivity (Ohm-m)	2000
0.2	Shallow Resistivity (Ohm-m)	2000
15000	Line Tension (lb)	0

LSPD
(ft/min)



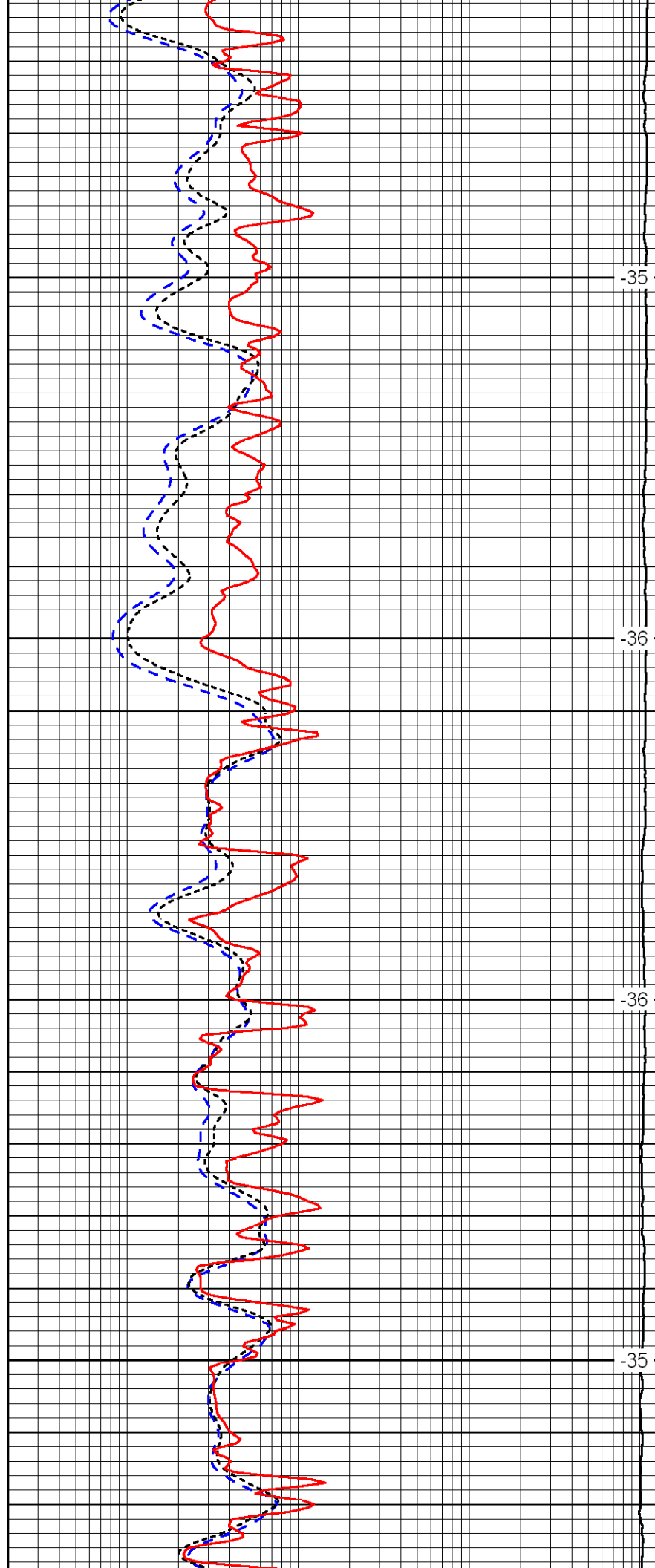


1700

1750

1800

1850

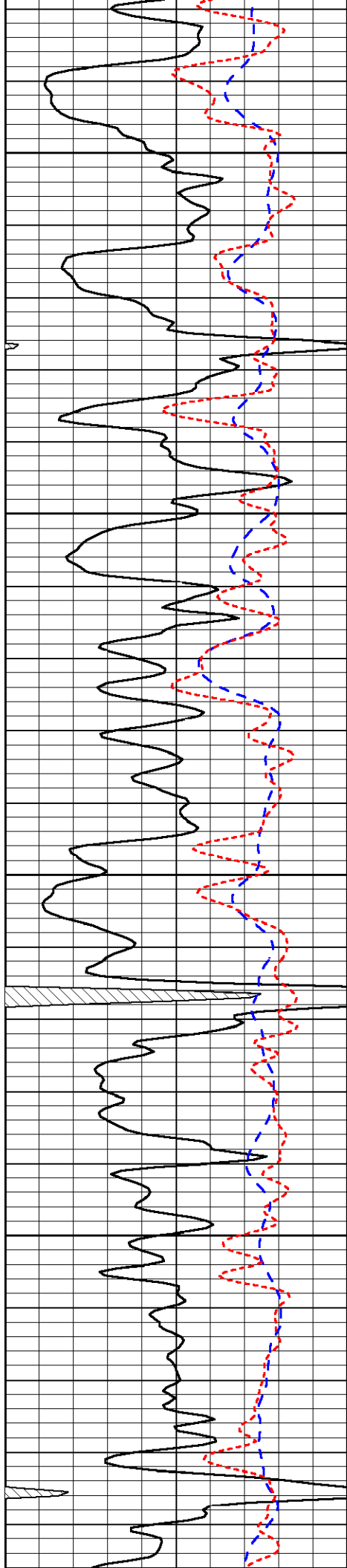


-35

-36

-36

-35

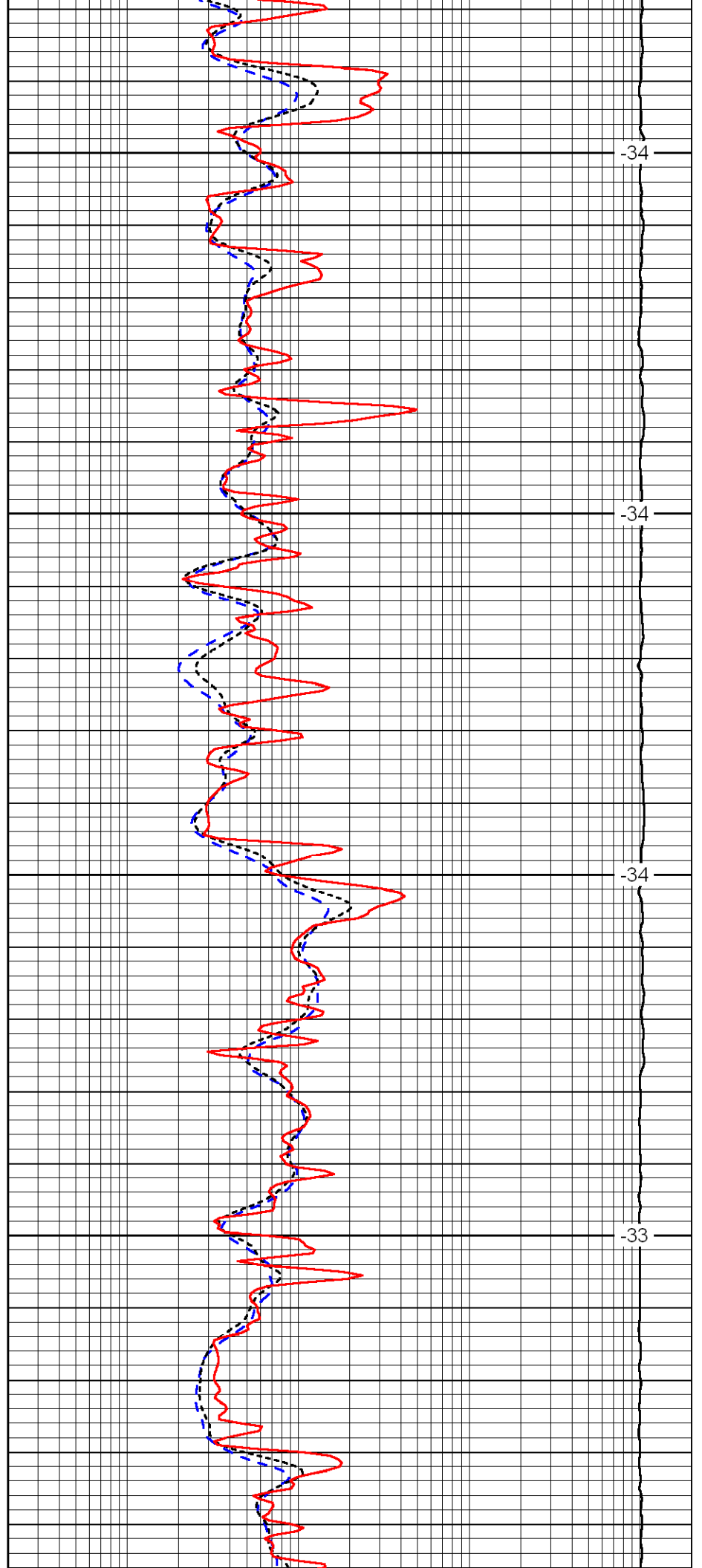


1900

1950

2000

2050

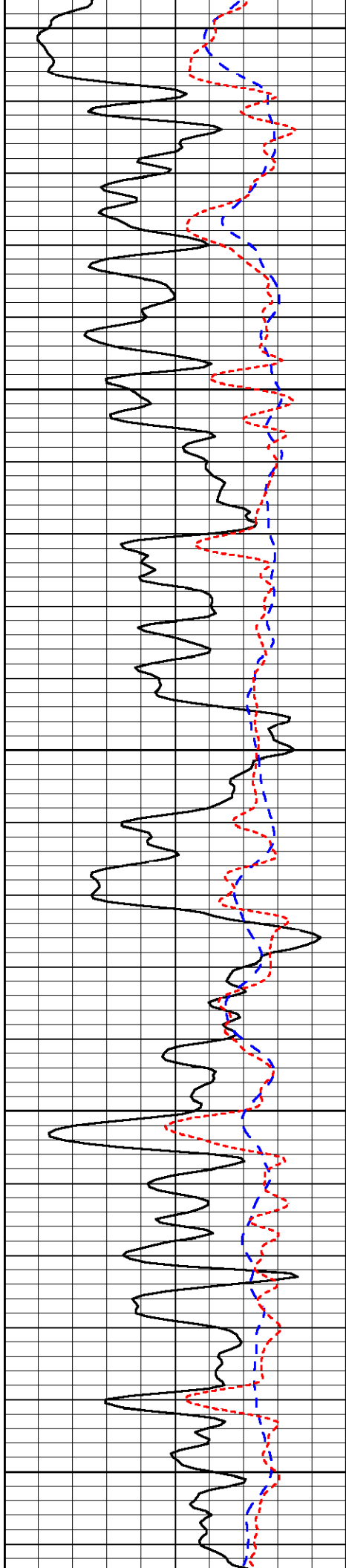


-34

-34

-34

-33



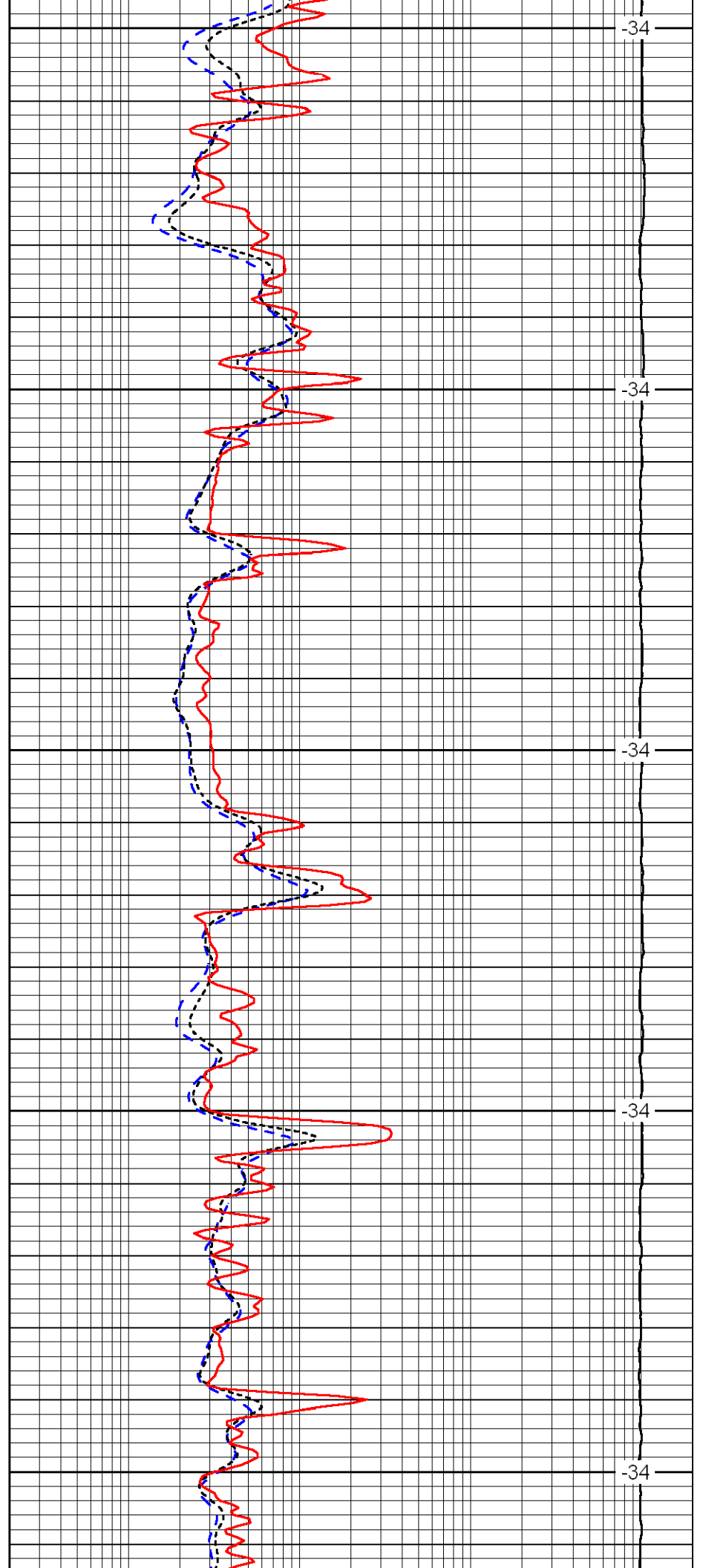
2100

2150

2200

2250

2300



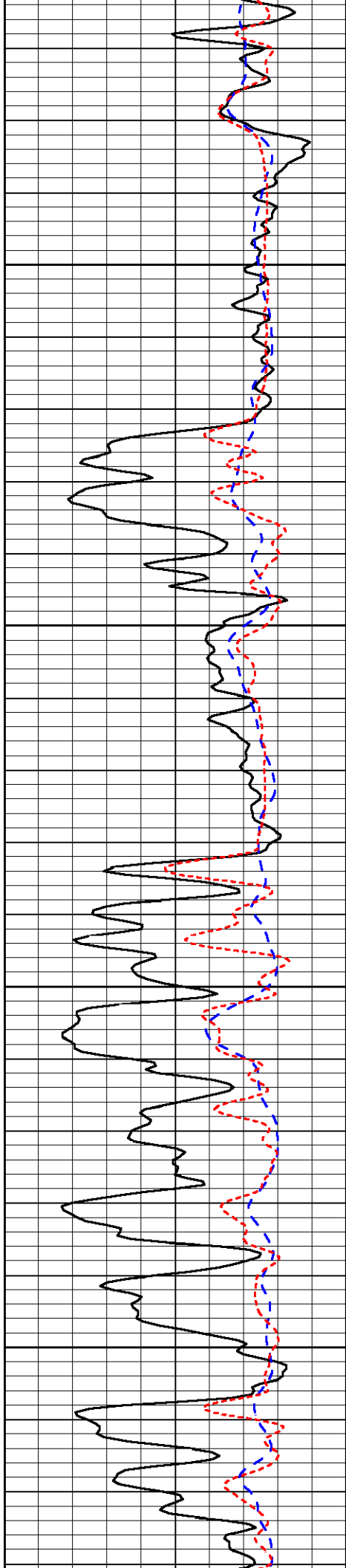
-34

-34

-34

-34

-34

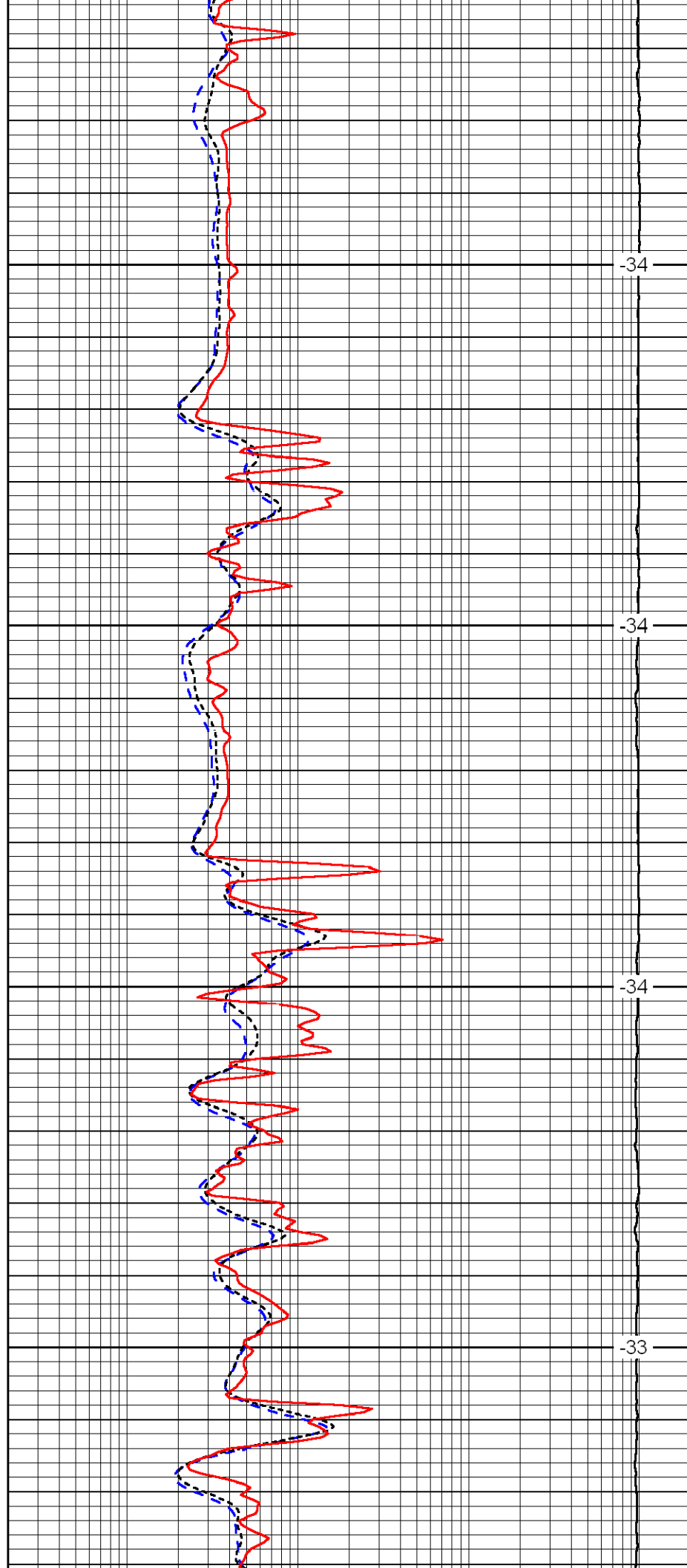


2350

2400

2450

2500

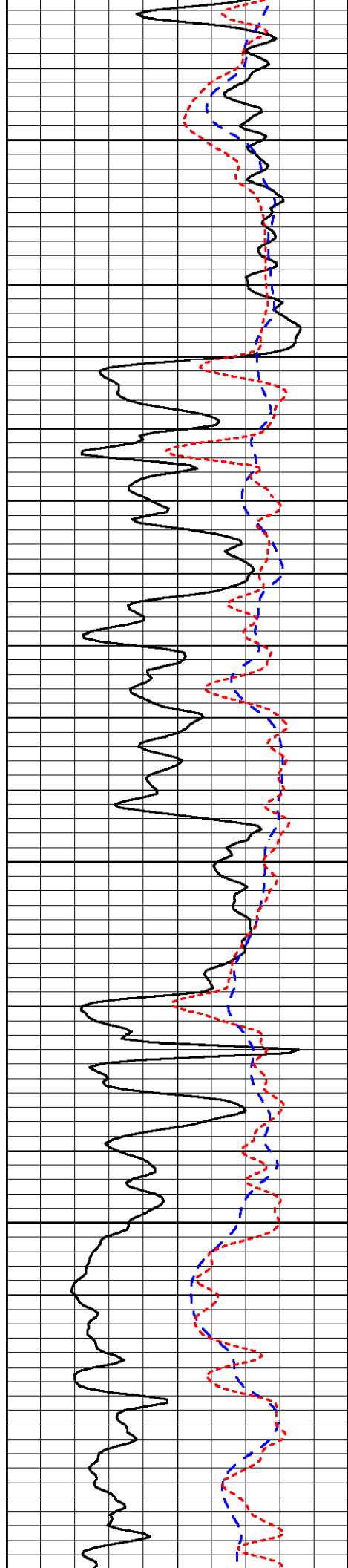


-34

-34

-34

-33

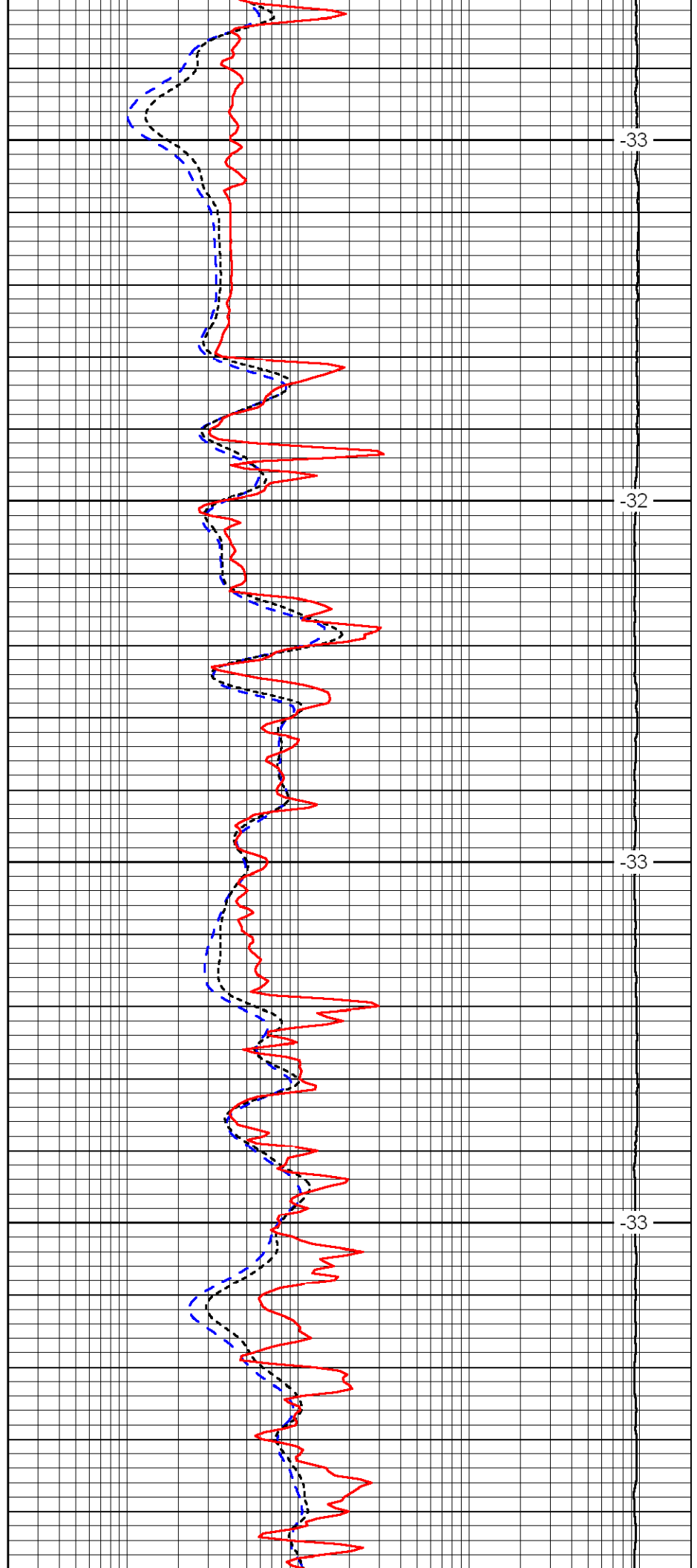


2550

2600

2650

2700

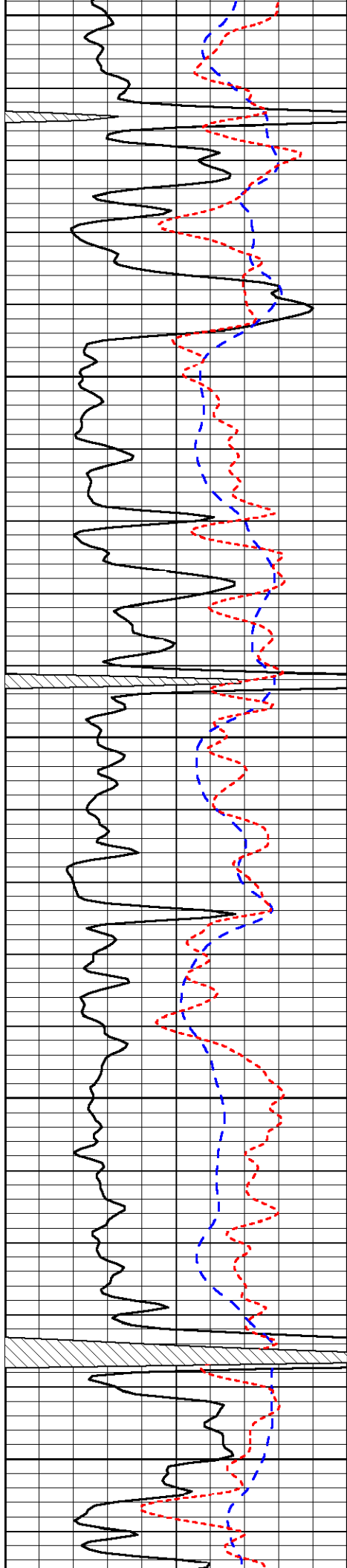


-33

-32

-33

-33



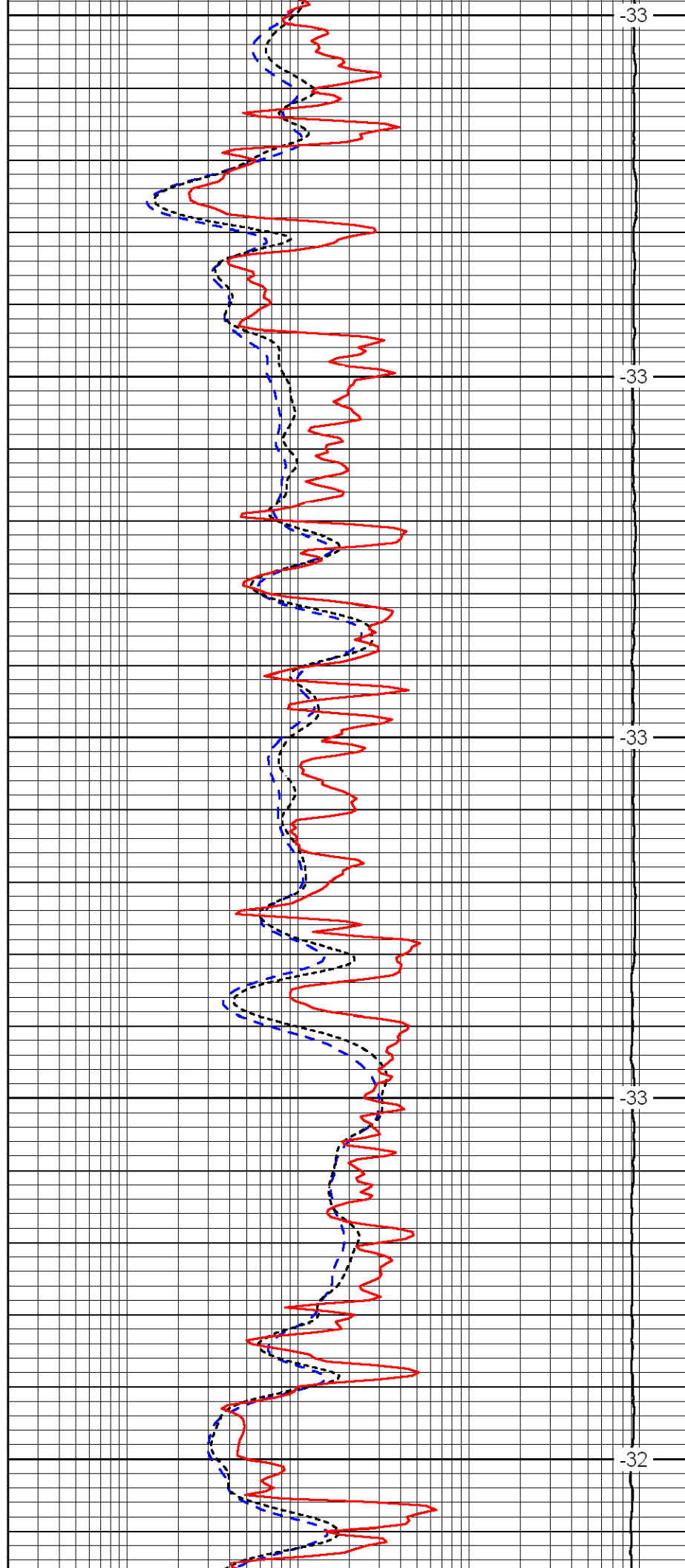
2750

2800

2850

2900

2950



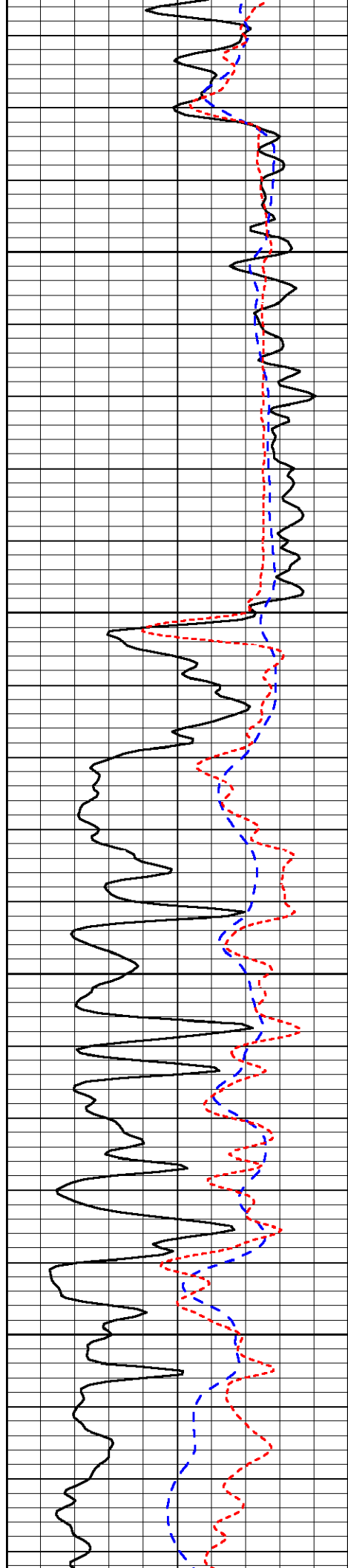
-33

-33

-33

-33

-32

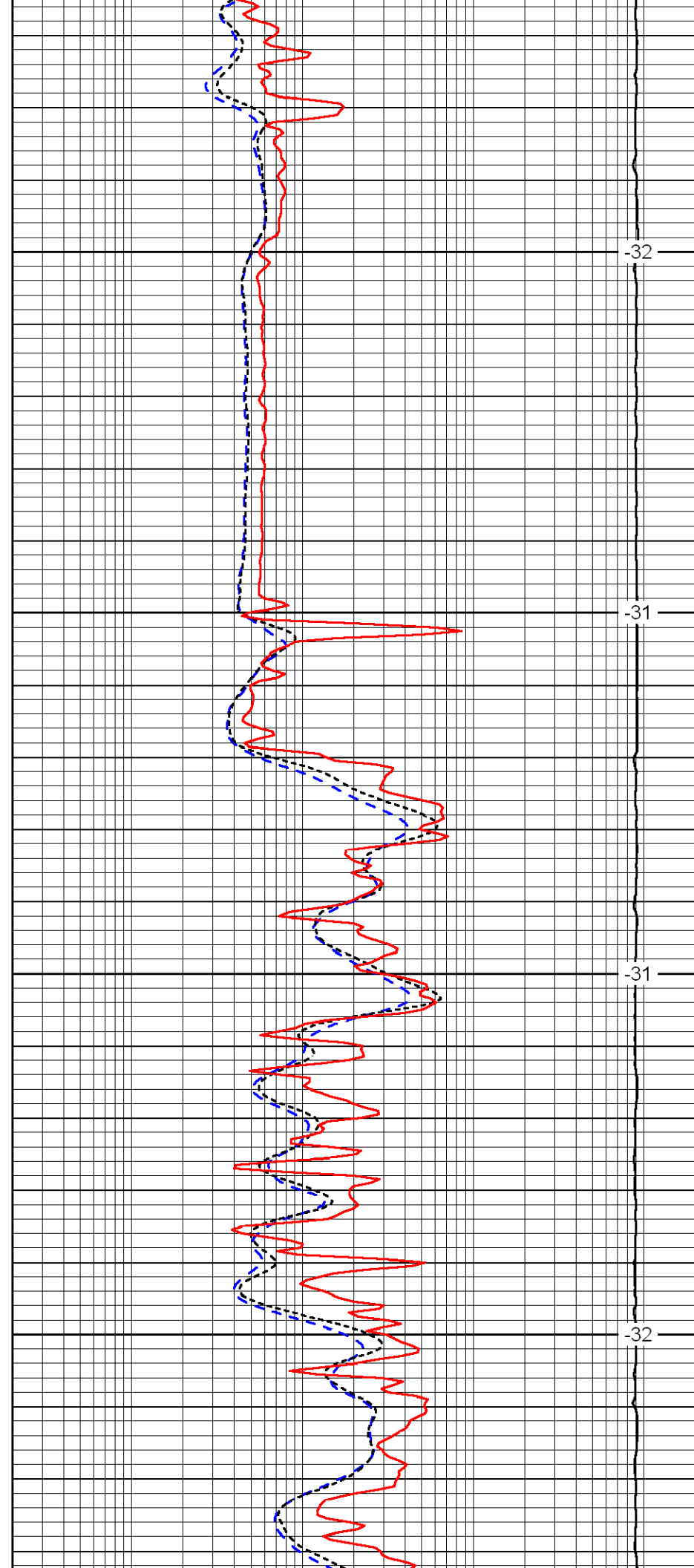


3000

3050

3100

3150

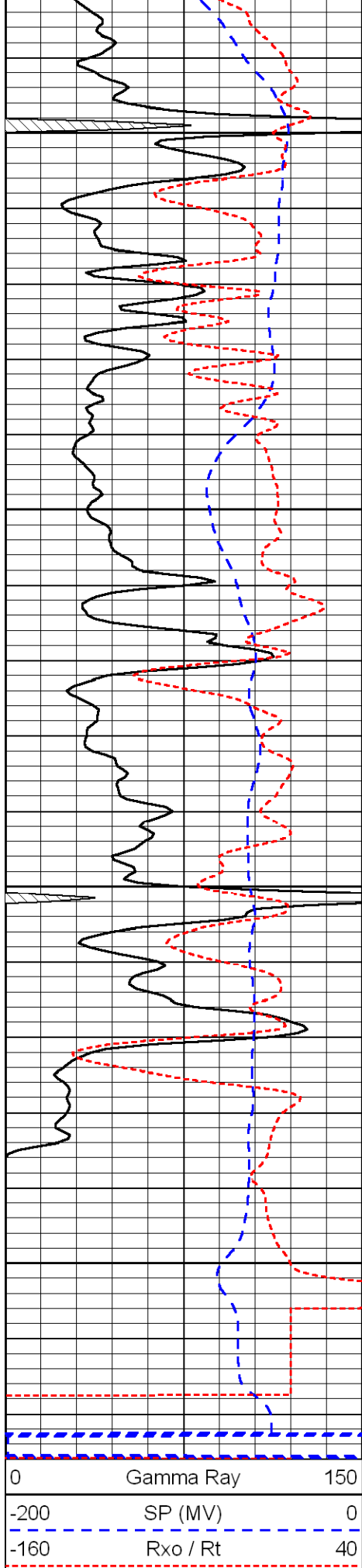


-32

-31

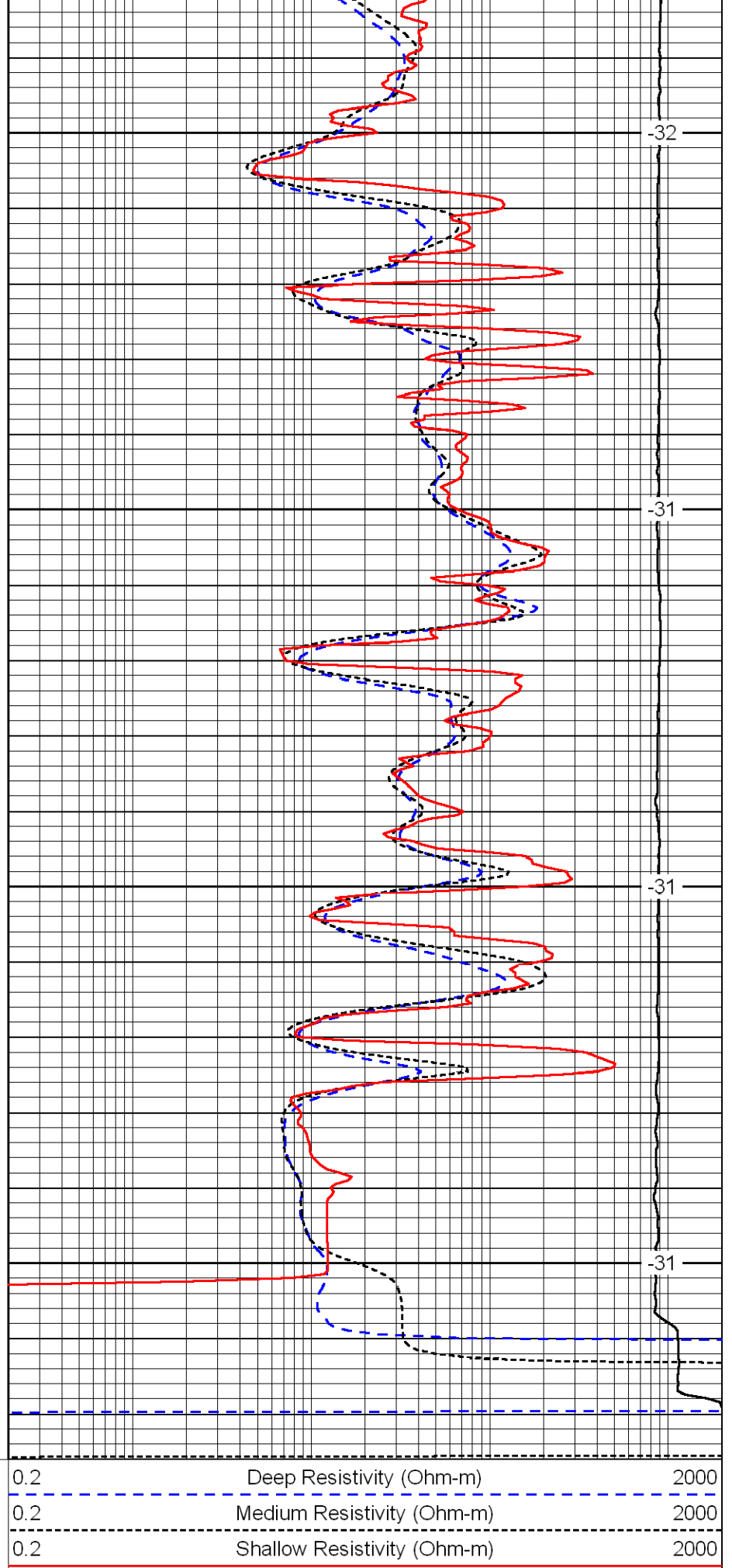
-31

-32



0	Gamma Ray	150
-200	SP (MV)	0
-160	Rxo / Rt	40

3200
3250
3300
3350



0.2	Deep Resistivity (Ohm-m)	2000
0.2	Medium Resistivity (Ohm-m)	2000
0.2	Shallow Resistivity (Ohm-m)	2000
15000	Line Tension (lb)	0

-32
-31
-31
-31

