



# Radiation Guard Log

**DIGITAL LOG** (785) 625-3858

API No.	15-135-24,891-00-00		
Company	Pintail Petroleum, Ltd.		
Well	Walker - Van Doren Unit No. 1-17		
Field	Bright Southwest		
County	Ness	State	Kansas
Location	230' FSL & 1400' FWL		
Sec: 17	Twp: 16S	Rge: 21W	
Permanent Datum	Ground Level	Elevation 2330	Other Services None
Log Measured From	Kelly Bushing	5 Ft. Above Perm. Datum	
Drilling Measured From	Frotkelly Bushing		

Date	04/29/2009	
Run Number	One	
Depth Driller	4330	
Depth Logger	4334	
Bottom Logged Interval	4333	
Top Log Interval	200	
Casing Driller	8.625 @ 206	
Casing Logger	207	
Bit Size	7.875	
Type Fluid in Hole	Chemical	
Salinity, ppm CL	4.800	
Density / Viscosity	9.2	48
pH / Fluid Loss	10.0	8.8
Source of Sample	Flowline	
Rm @ Meas. Temp	1.1 @ 75	
Rmf @ Meas. Temp	.82 @ 75	
Rmc @ Meas. Temp	1.48 @ 75	
Source of Rmf / Rmc	Charts	
Rm @ BHT	.68 @ 121	
Operating Rig Time	2 Hours	
Max Rec. Temp. F	121	
Equipment Number	10	
Location	Hays	
Recorded By	Jason Wellbrock	
Witnessed By	Flip Phillips	

<<< Fold Here >>>

All interpretations are opinions based on inferences from electrical or other measurements and we cannot and do not guarantee the accuracy or correctness of any interpretation, and we shall not, except in the case of gross or willful negligence on our part, be liable or responsible for any loss, costs, damages, or expenses incurred or sustained by anyone resulting from any interpretation made by any of our officers, agents or employees. These interpretations are also subject to our general terms and conditions set out in our current Price Schedule.

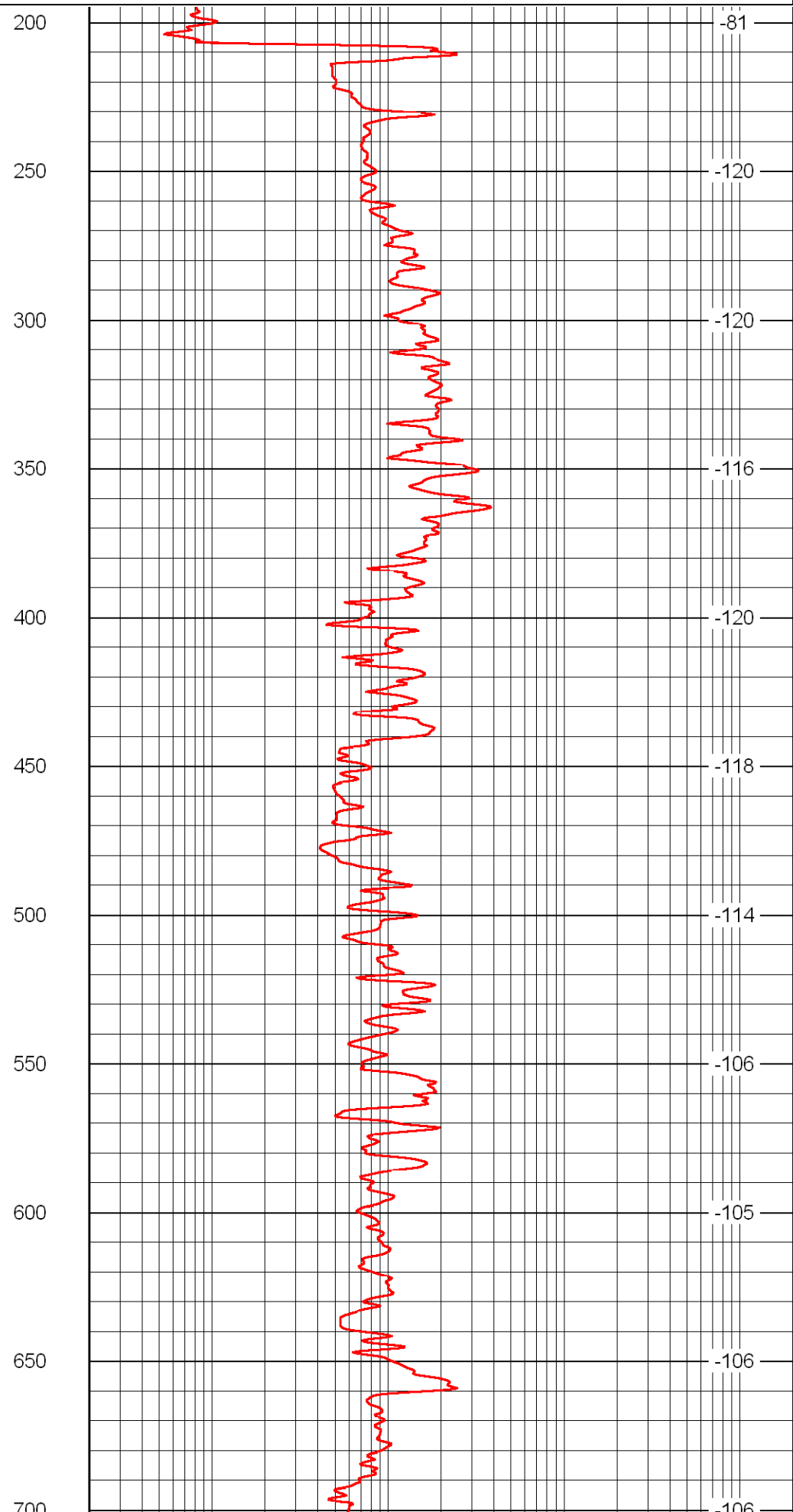
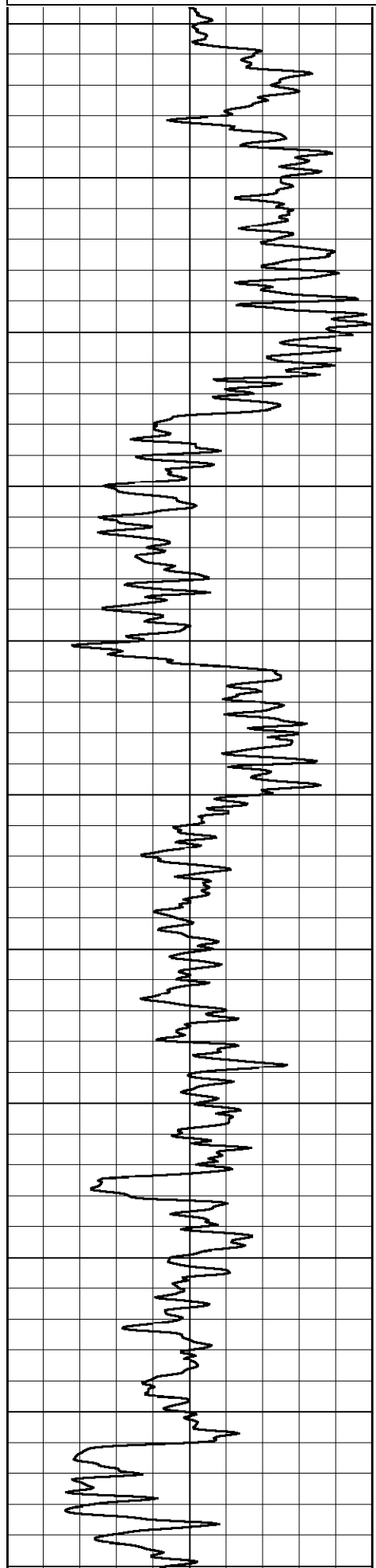
### Comments

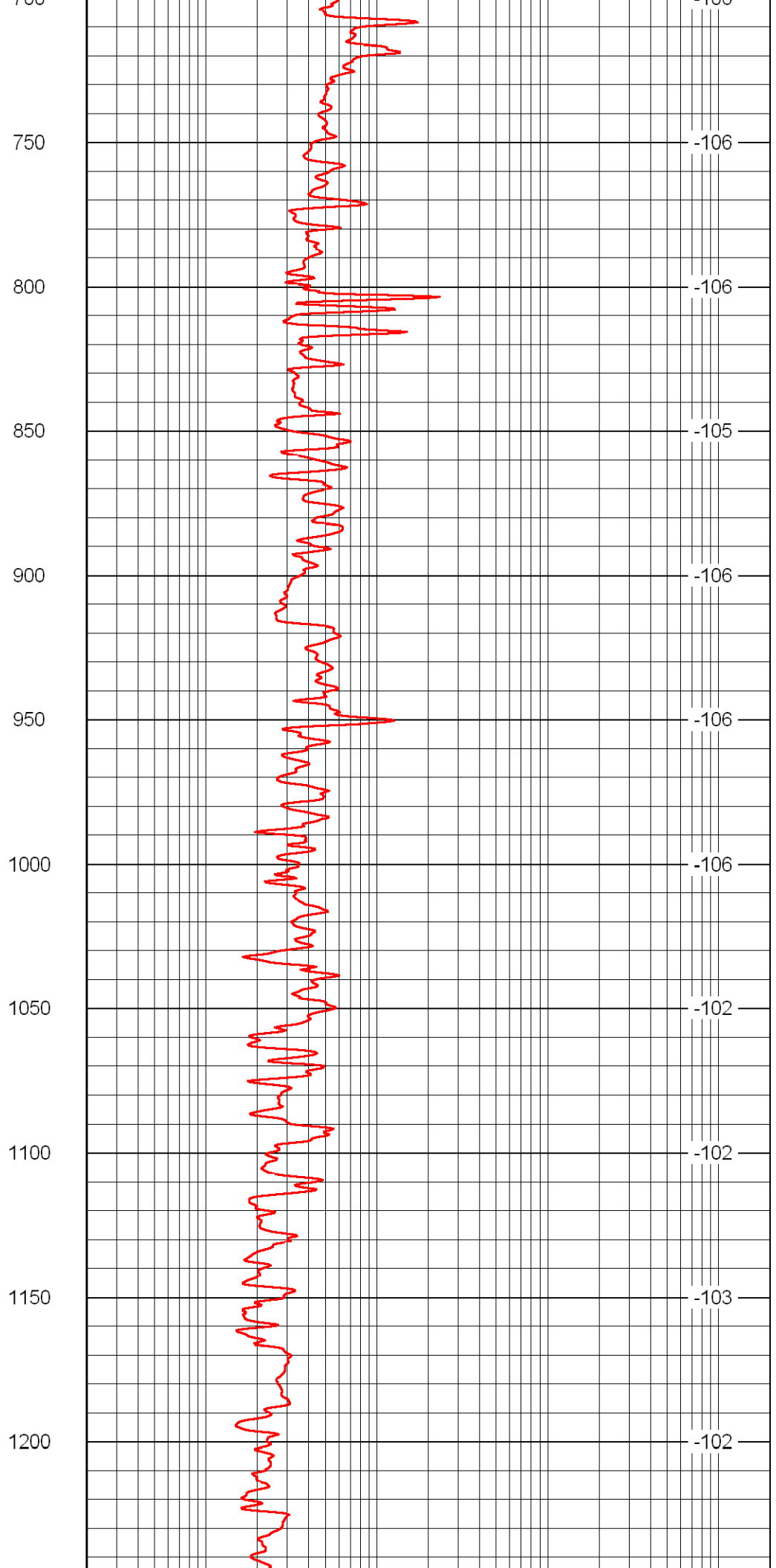
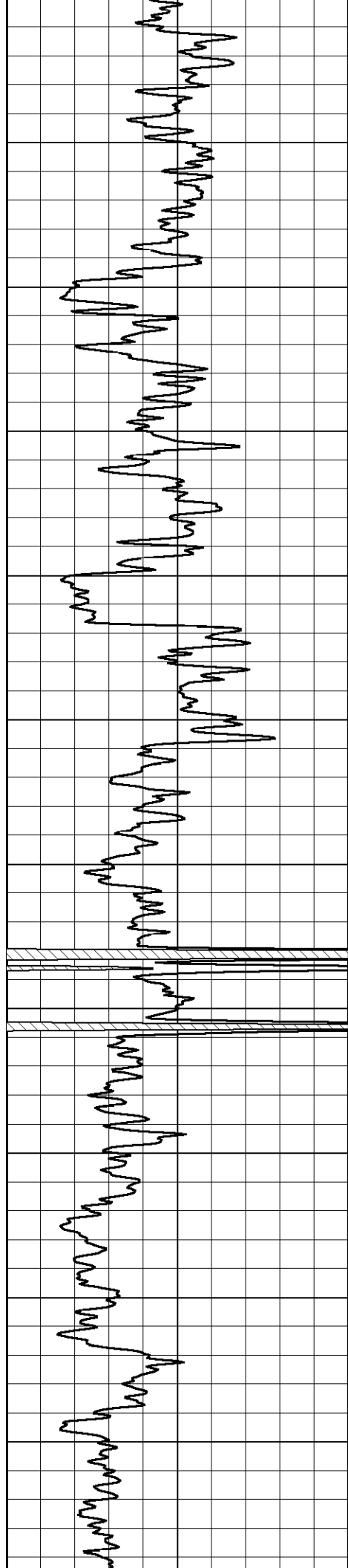
Thank you for using Log-Tech, Inc.  
(785) 625-3858

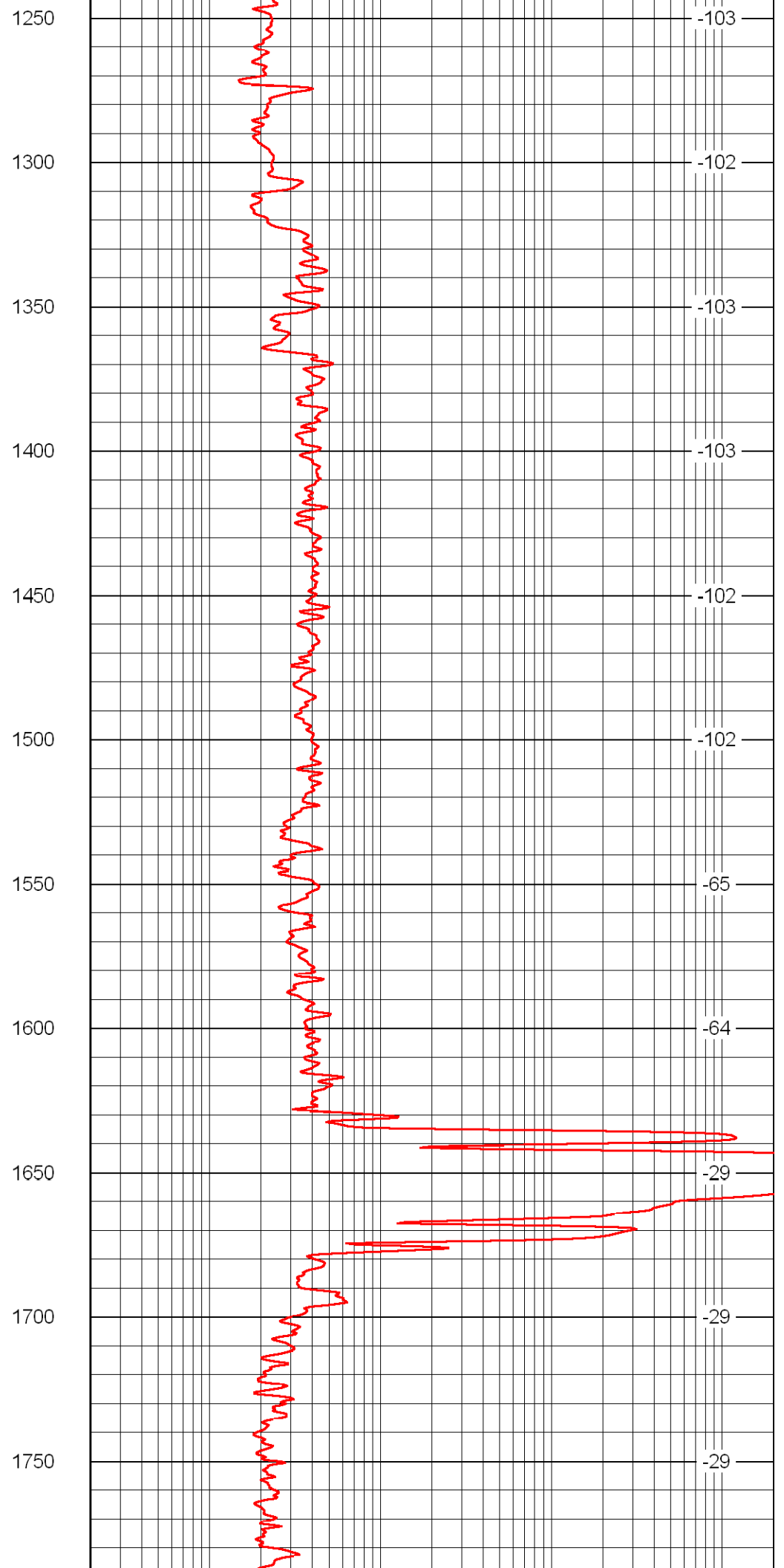
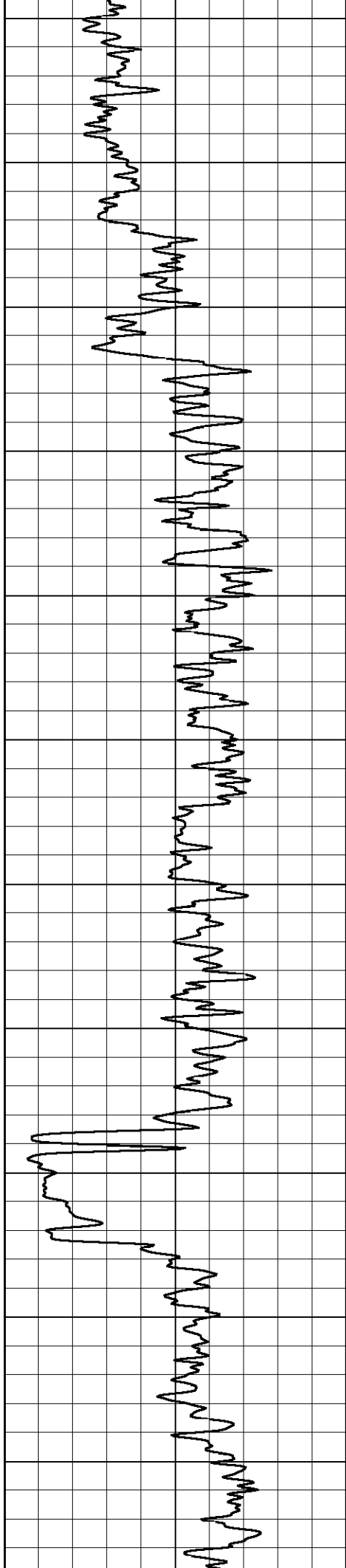
Ellis blacktop and highway 4, W to FF rd, 1 N, 1/2 W, N Into

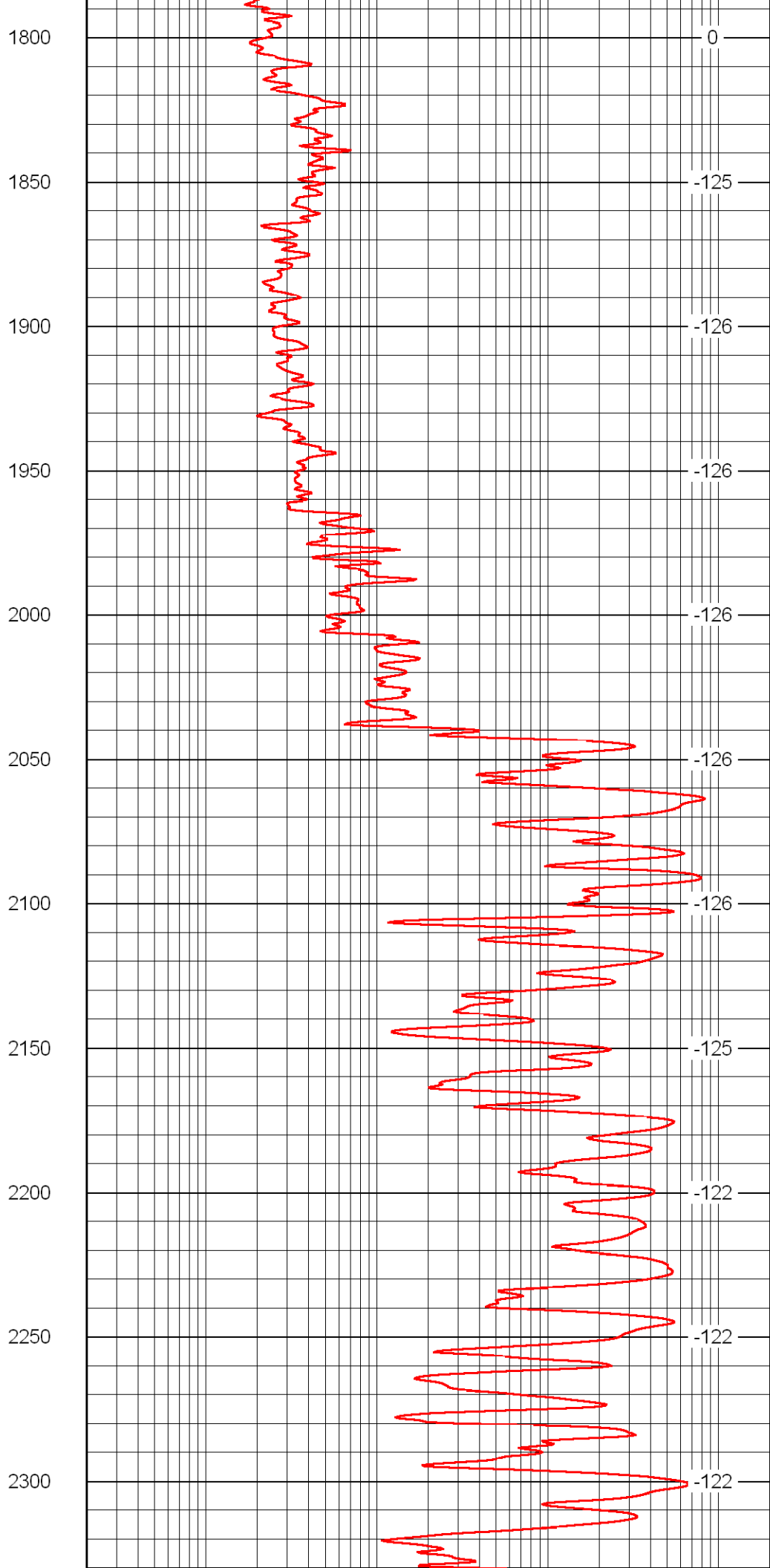
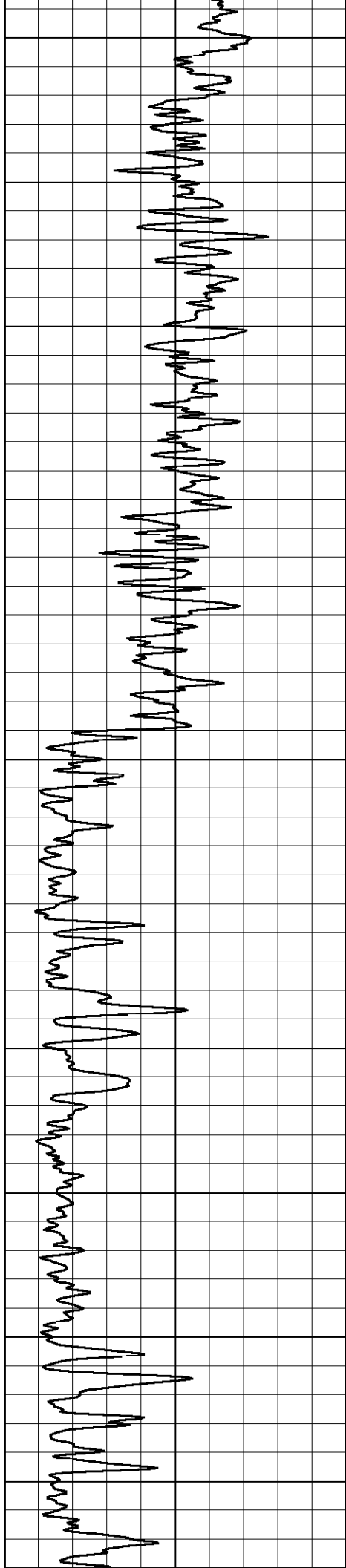
Database File: c:\warrior\data\pintail\_walker - van doren unit no. 1-17\pintailhd.db  
 Dataset Pathname: rag/pint2in  
 Presentation Format: rag2in  
 Dataset Creation: Wed Apr 29 13:31:33 2009  
 Charted by: Depth in Feet scaled 1:600

LSPD  
(ft/min)

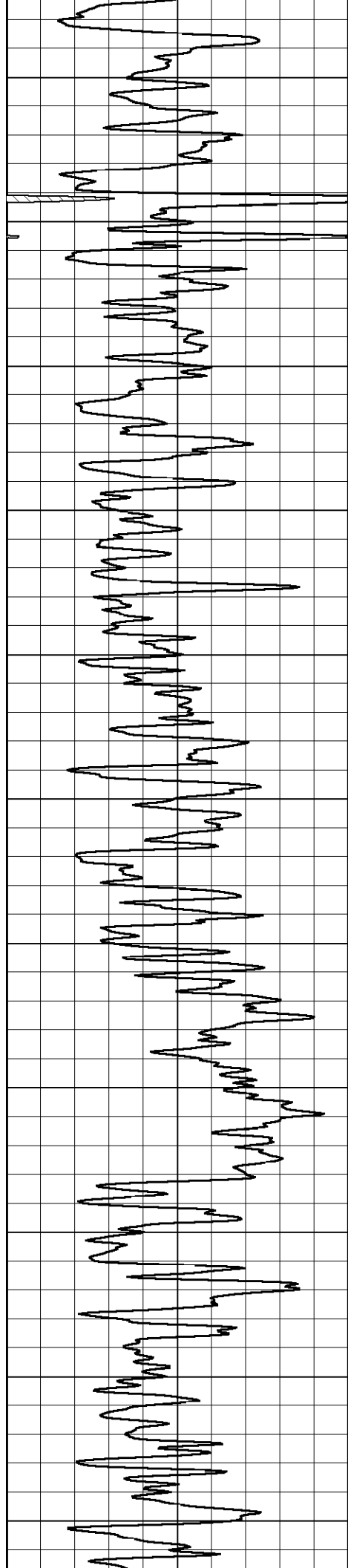












2900

2950

3000

3050

3100

3150

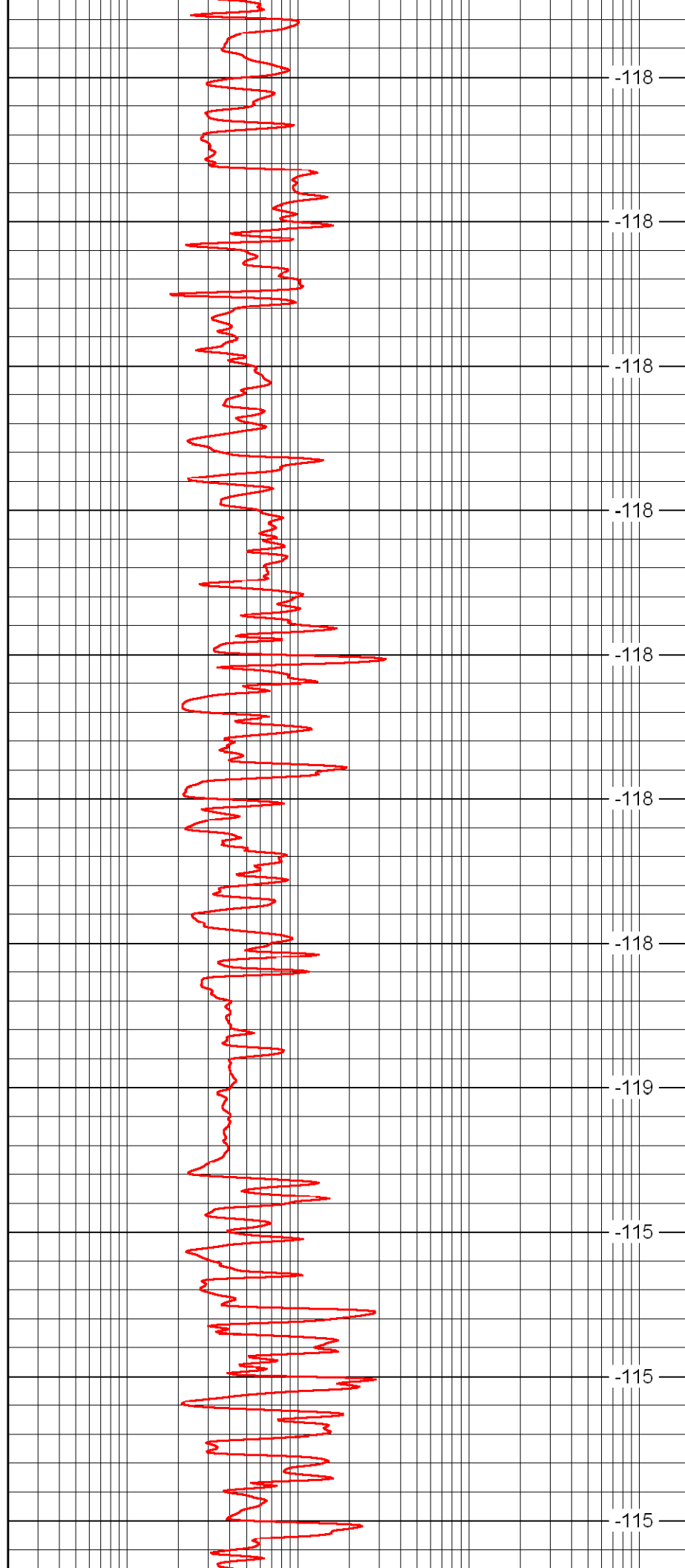
3200

3250

3300

3350

3400



-118

-118

-118

-118

-118

-118

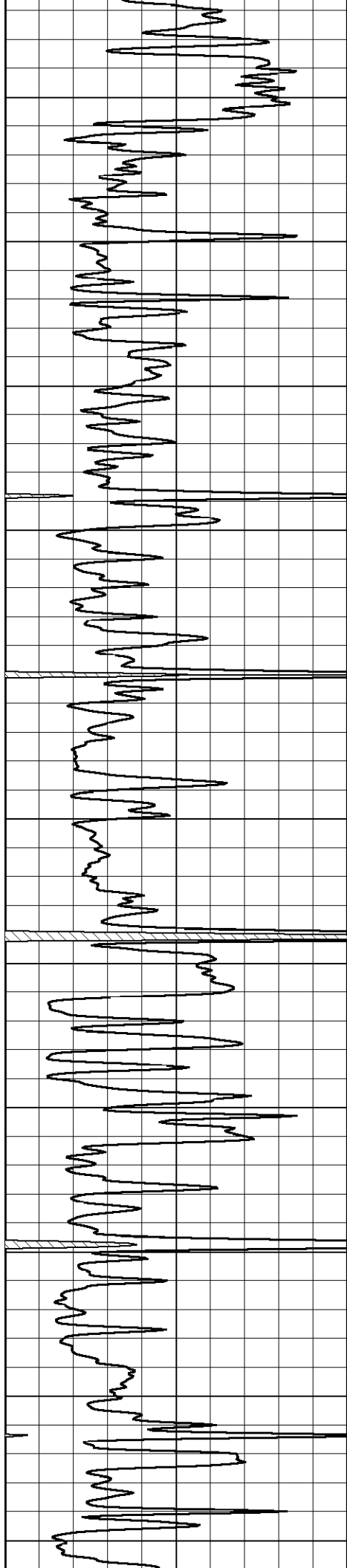
-118

-119

-115

-115

-115



3450

3500

3550

3600

3650

3700

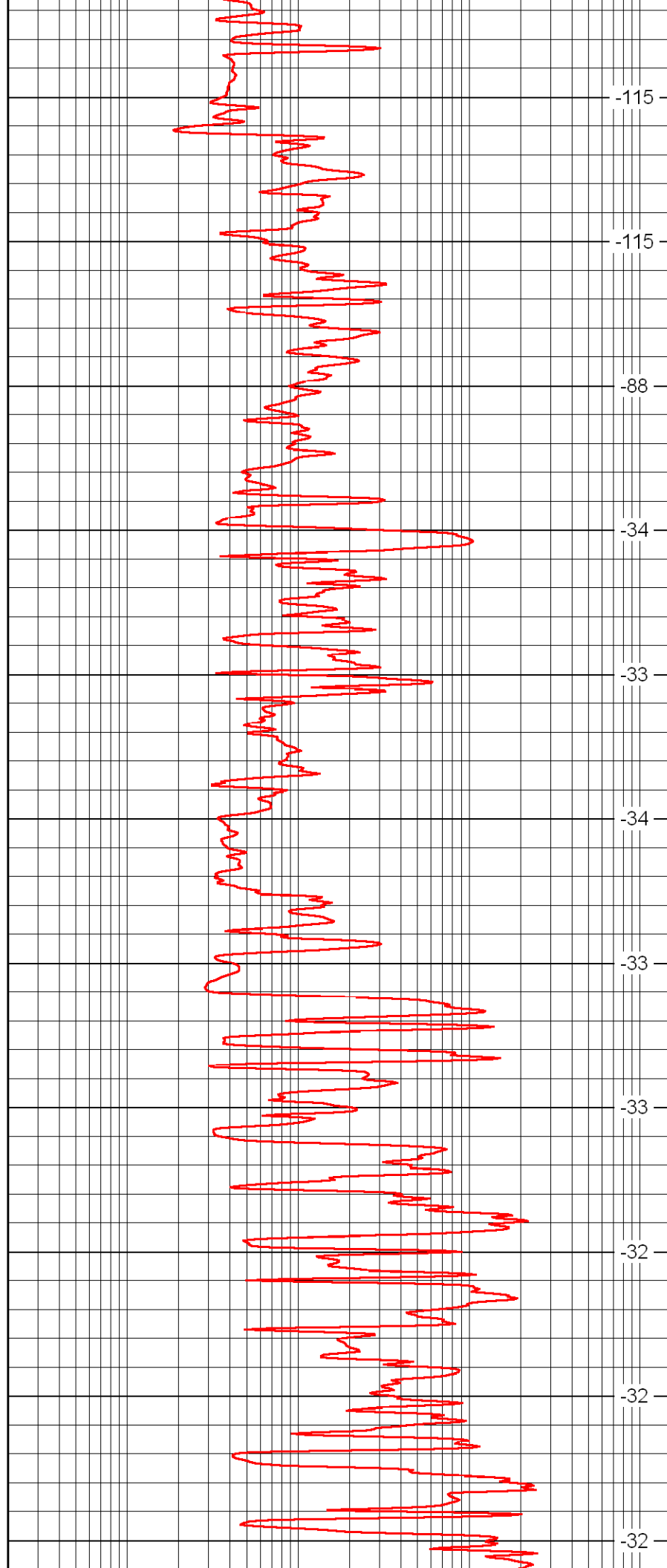
3750

3800

3850

3900

3950



-115

-115

-88

-34

-33

-34

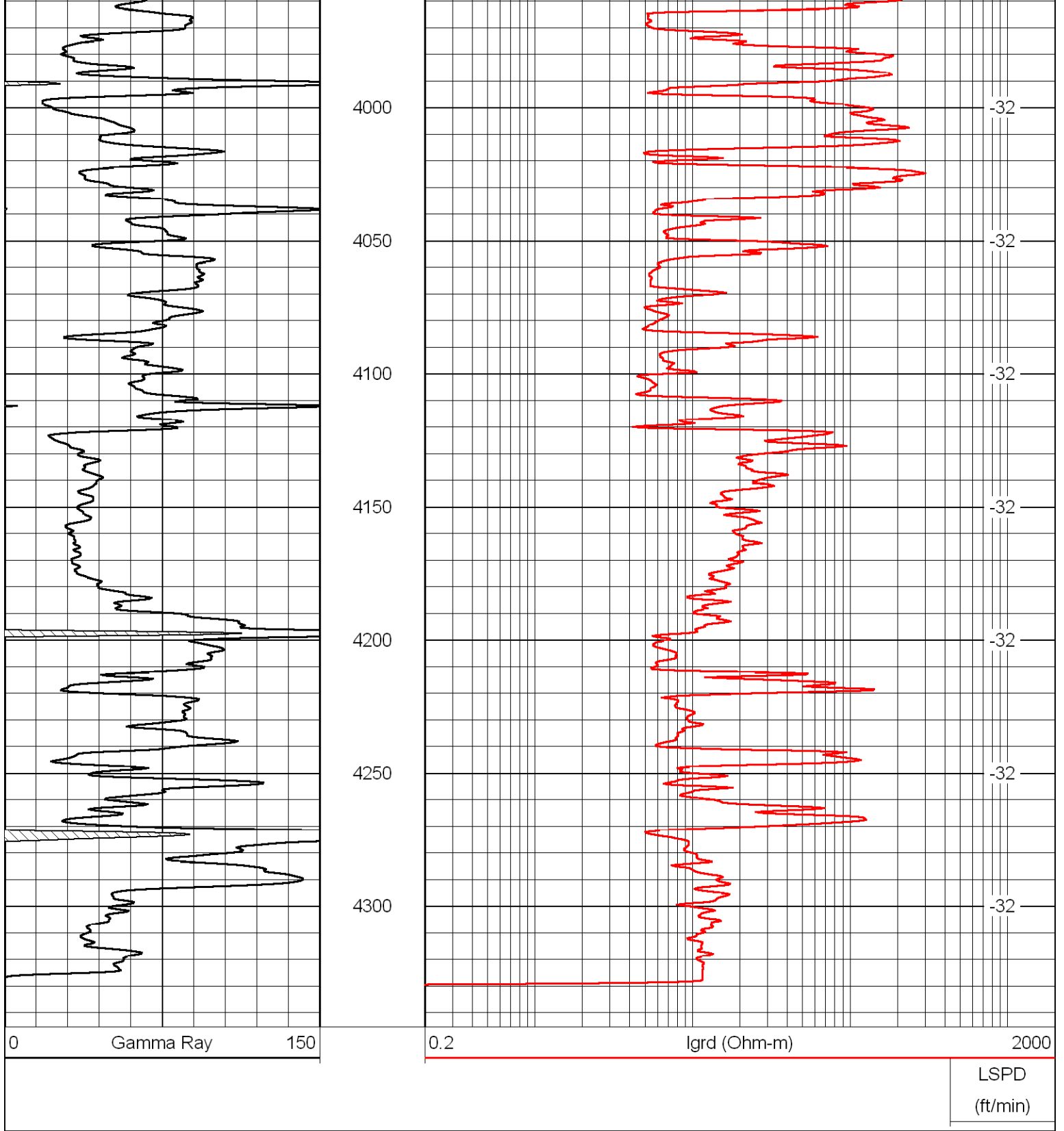
-33

-33

-32

-32

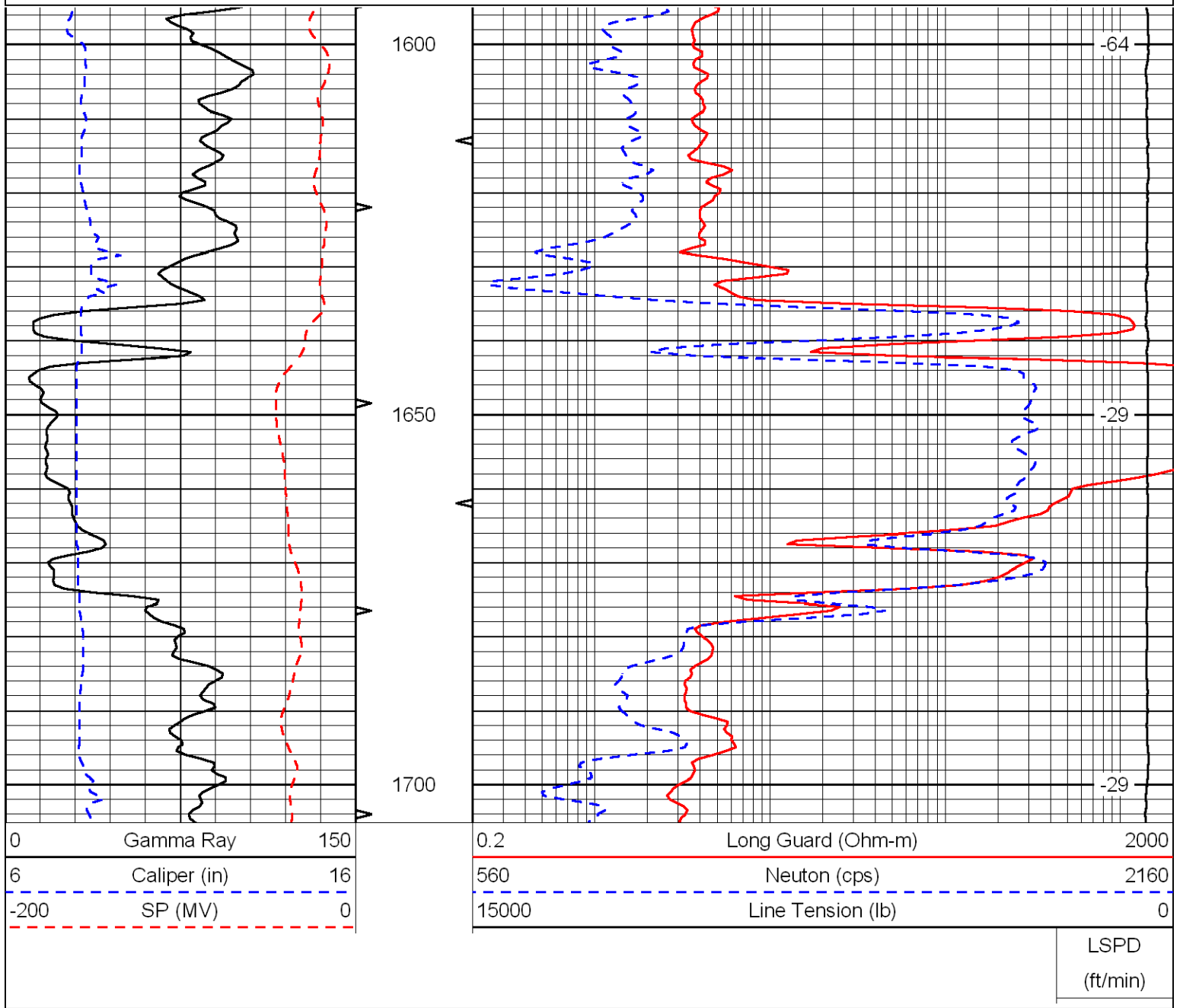
-32



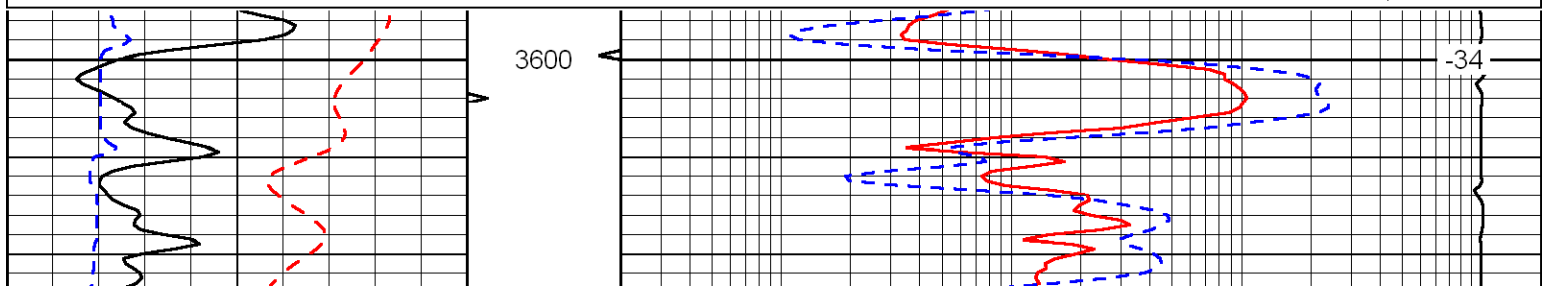
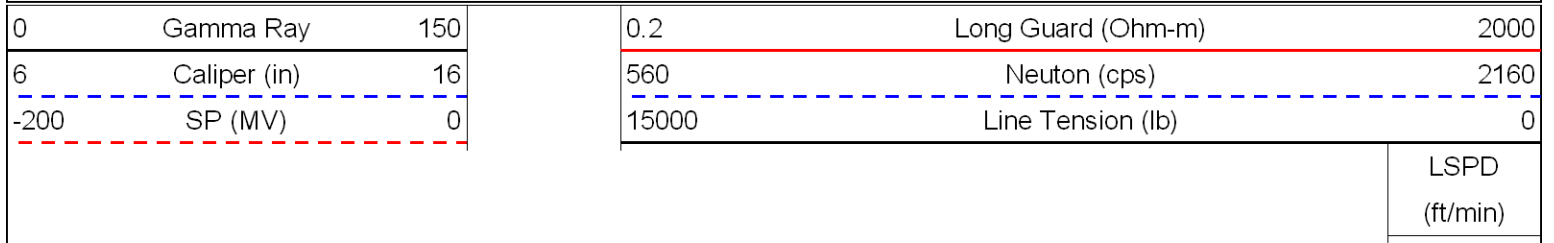
Database File: c:\warrior\data\pintail\_walker - van doren unit no. 1-17\pintailhd.db  
 Dataset Pathname: rag/pint2in  
 Presentation Format: rag  
 Dataset Creation: Wed Apr 29 13:31:33 2009  
 Charted by: Depth in Feet scaled 1:240

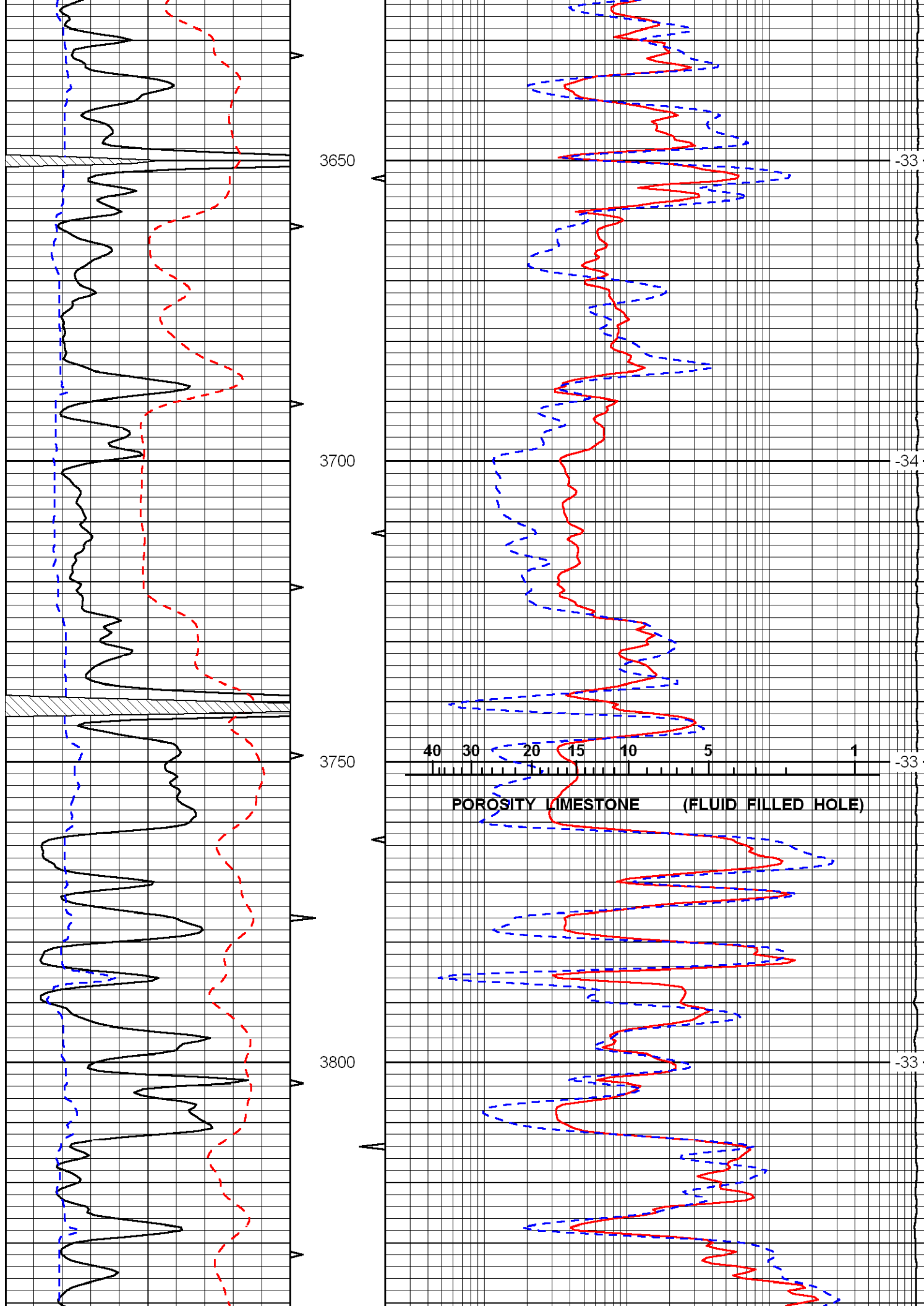
0	Gamma Ray	150	0.2	Long Guard (Ohm-m)	2000
6	Caliper (in)	16	560	Neutron (cps)	2160
-200	SP (MV)	0	15000	Line Tension (lb)	0

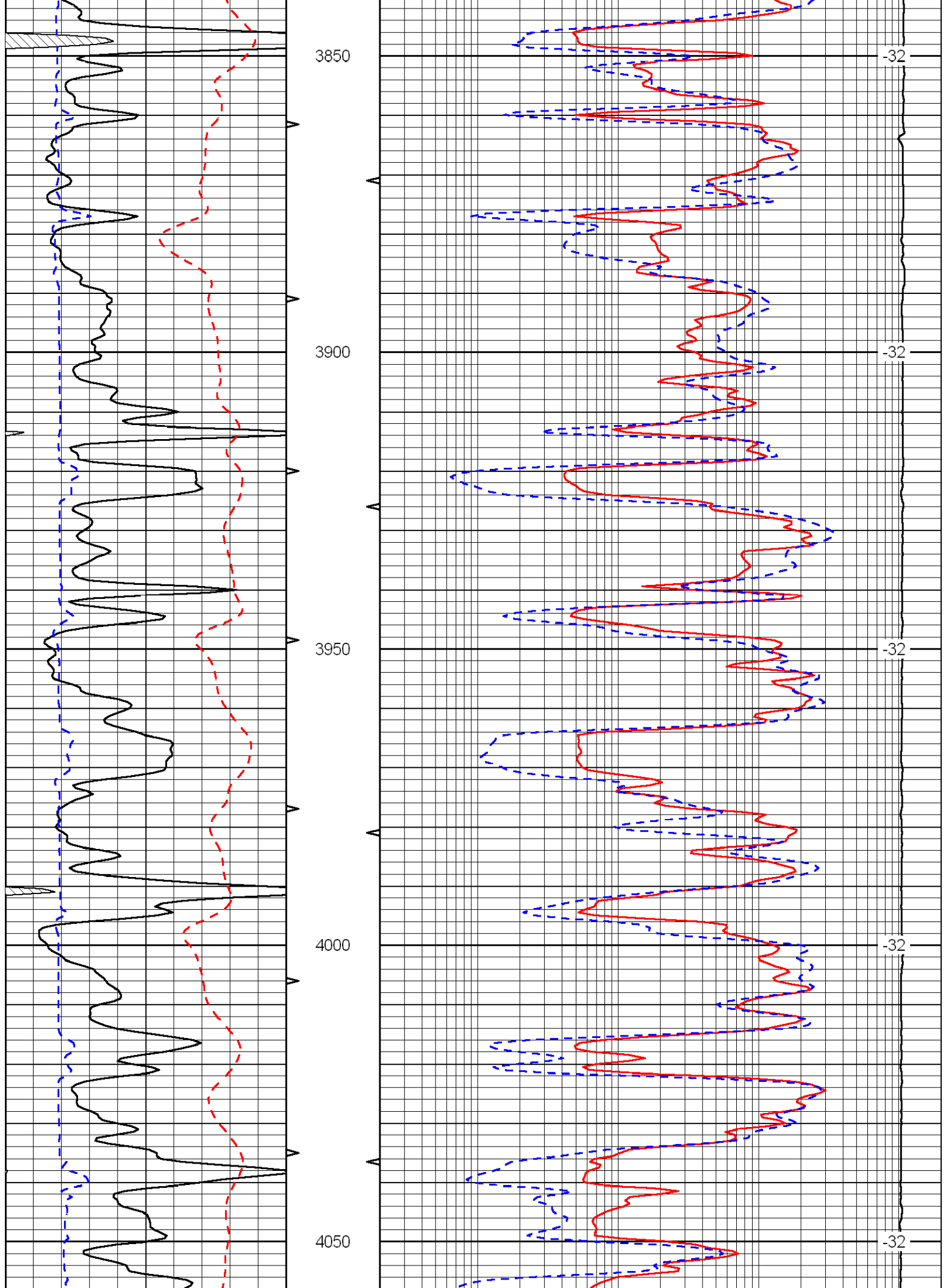
LSPD  
(ft/min)

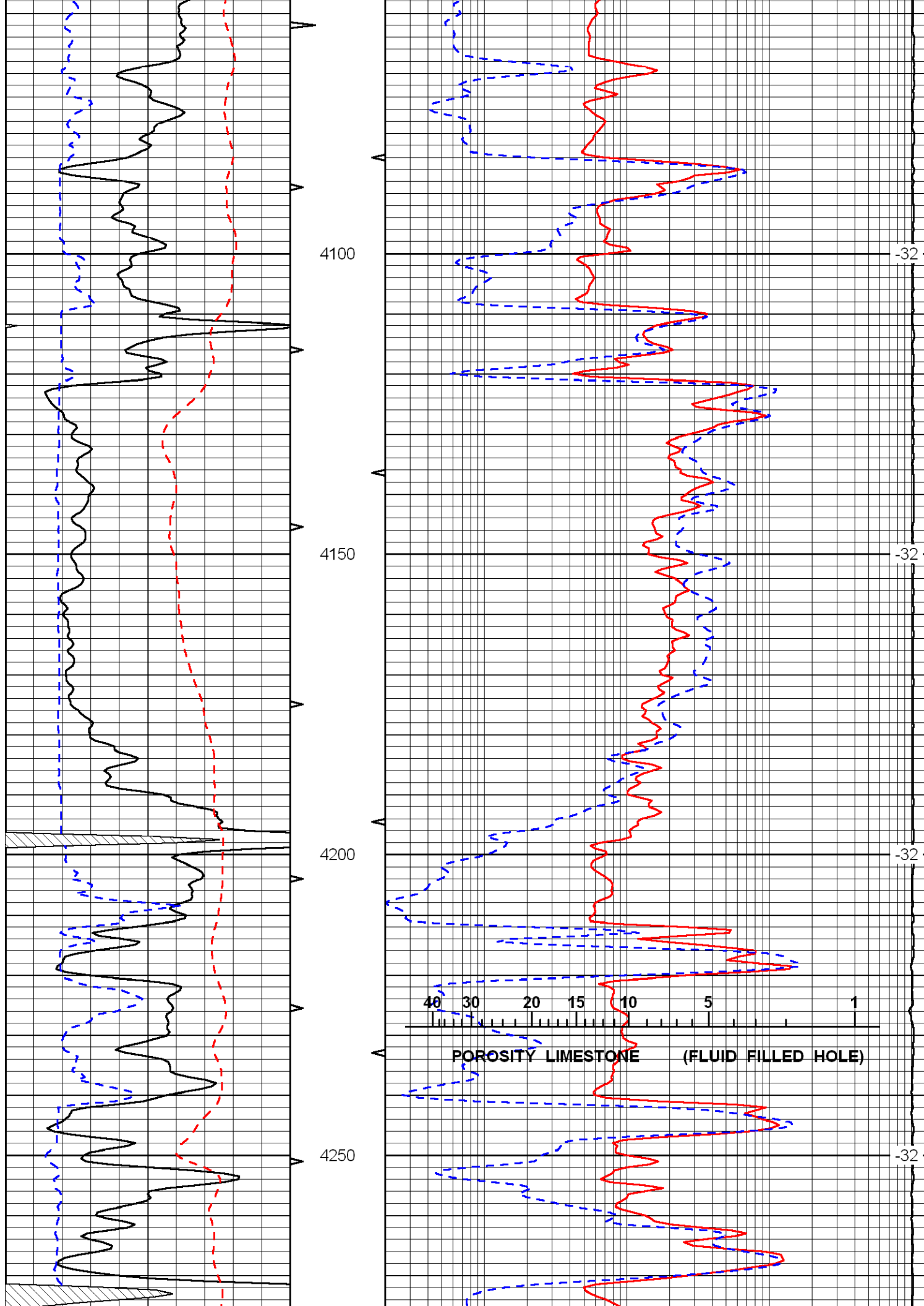


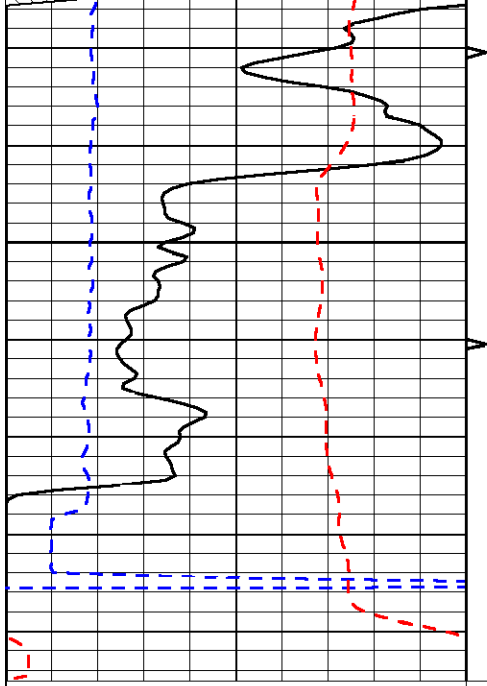
Database File: c:\warrior\data\pintail\_walker - van doren unit no. 1-17\pintailhd.db  
 Dataset Pathname: rag/pint2in  
 Presentation Format: rag  
 Dataset Creation: Wed Apr 29 13:31:33 2009  
 Charted by: Depth in Feet scaled 1:240



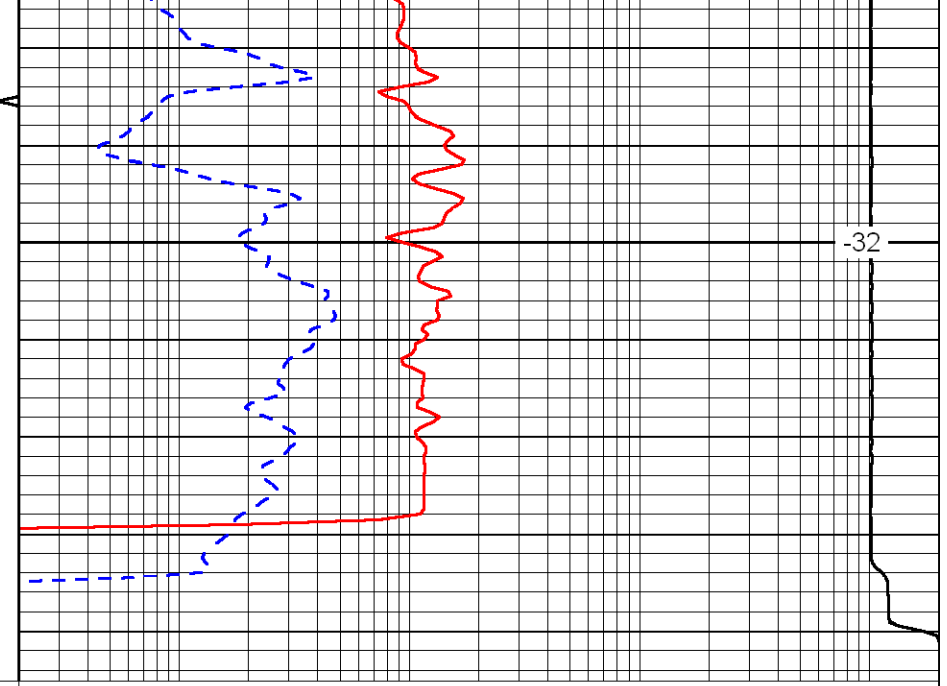








4300



-32

0	Gamma Ray	150
6	Caliper (in)	16
-200	SP (MV)	0

0.2	Long Guard (Ohm-m)	2000
560	Neutron (cps)	2160
15000	Line Tension (lb)	0

LSPD (ft/min)
------------------