



SUPERIOR
Hays,
Kansas

SONIC
LOG

Company DREILING OIL, INC.
Well SCHULTZE #1
Field
County OSBORNE
State KANSAS

Company DREILING OIL, INC.
Well SCHULTZE #1
Field
County OSBORNE State KANSAS

Location: API #: 15-141-20401
1850' FSL & 2980' FEL
E/2 - NE - SW
SEC 28 TWP 8S RGE 13W
Permanent Datum GROUND LEVEL Elevation 1705
Log Measured From KELLY BUSHING 8' A.G.L.
Drilling Measured From KELLY BUSHING
Other Services
CDL/CNL
MICRO/DIL
Elevation
K.B. 1713
D.F.
G.L. 1705

| | |
|------------------------------|--------------|
| Date | 4-17-09 |
| Run Number | TWO |
| Depth Driller | 3760 |
| Depth Logger | 3760 |
| Bottom Logged Interval | 3752 |
| Top Log Interval | 210 |
| Casing Driller | 222 |
| Casing Logger | 221 |
| Bit Size | 7.875 |
| Type Fluid in Hole | CHEMICAL MUD |
| Density / Viscosity | 9.3 / 48 |
| pH / Fluid Loss | 10.0 / 8.0 |
| Source of Sample | FLOWLINE |
| Rim @ Meas. Temp | 0.85 @ 84F |
| Rmf @ Meas. Temp | 0.64 @ 84F |
| Rmc @ Meas. Temp | 1.02 @ 84F |
| Source of Rmf / Rmc | MEASURED |
| Rm @ BHT | .640 @ 112F |
| Time Circulation Stopped | 2 HOURS |
| Time Logger on Bottom | |
| Maximum Recorded Temperature | 112F |
| Equipment Number | 0860 |
| Location | HAYS, KS. |
| Recorded By | RUPP |
| Witnessed By | BILL REE |

<<< Fold Here >>>

All interpretations are opinions based on inferences from electrical or other measurements and we cannot and do not guarantee the accuracy or correctness of any interpretation, and we shall not, except in the case of gross or willful negligence on our part, be liable or responsible for any loss, costs, damages, or expenses incurred or sustained by anyone resulting from any interpretation made by any of our officers, agents or employees. These interpretations are also subject to our general terms and conditions set out in our current Price Schedule.

Comments

SUPERIOR WELL SERVICES
 785-628-6395
 THANK YOU FOR YOUR BUSINESS
 DIRECTIONS: WALDO, 5N TO THE STOP SIGN, N TO COVERT, 2N & E TO CURVE, 1/2N, E INTO.

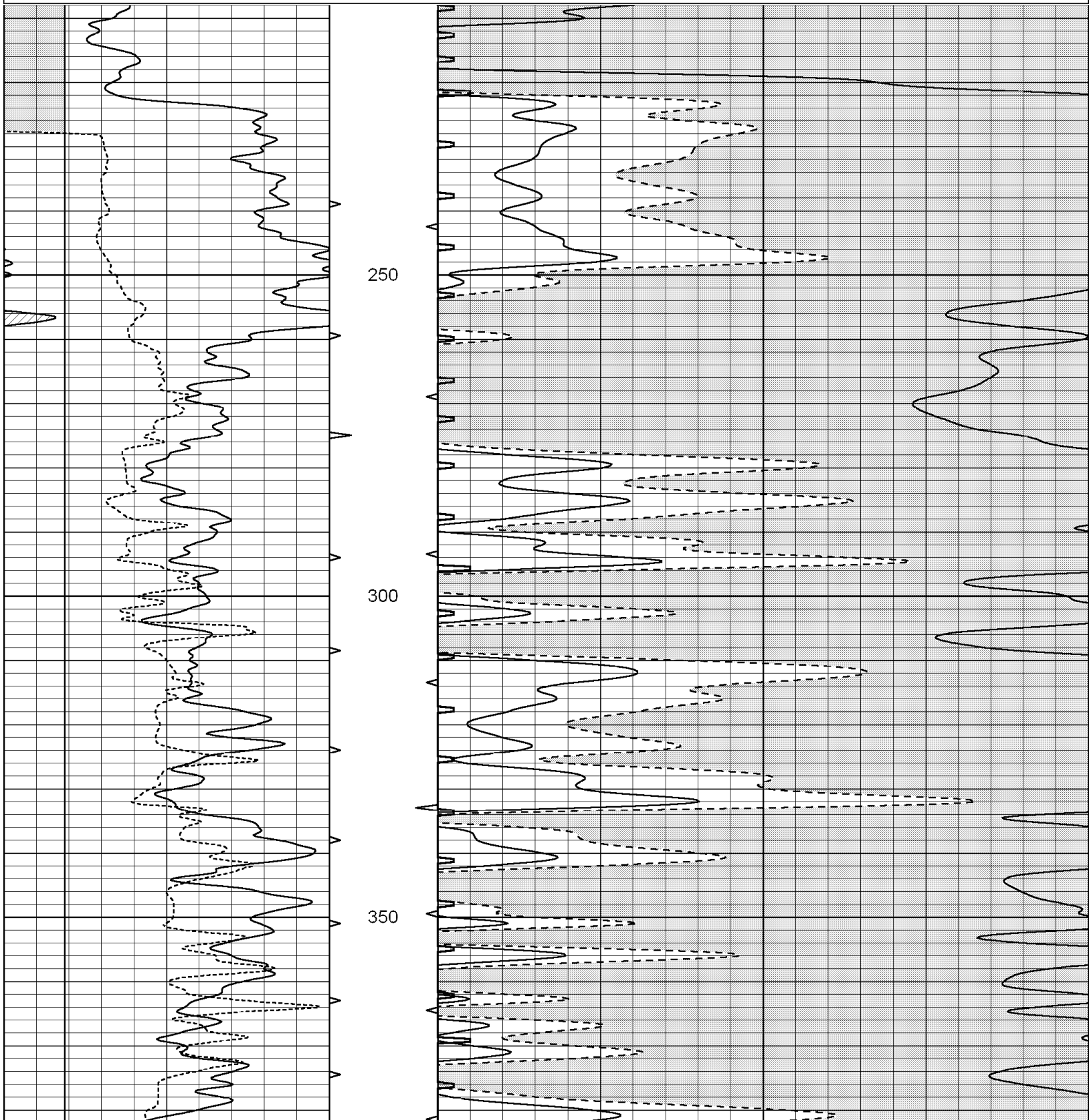


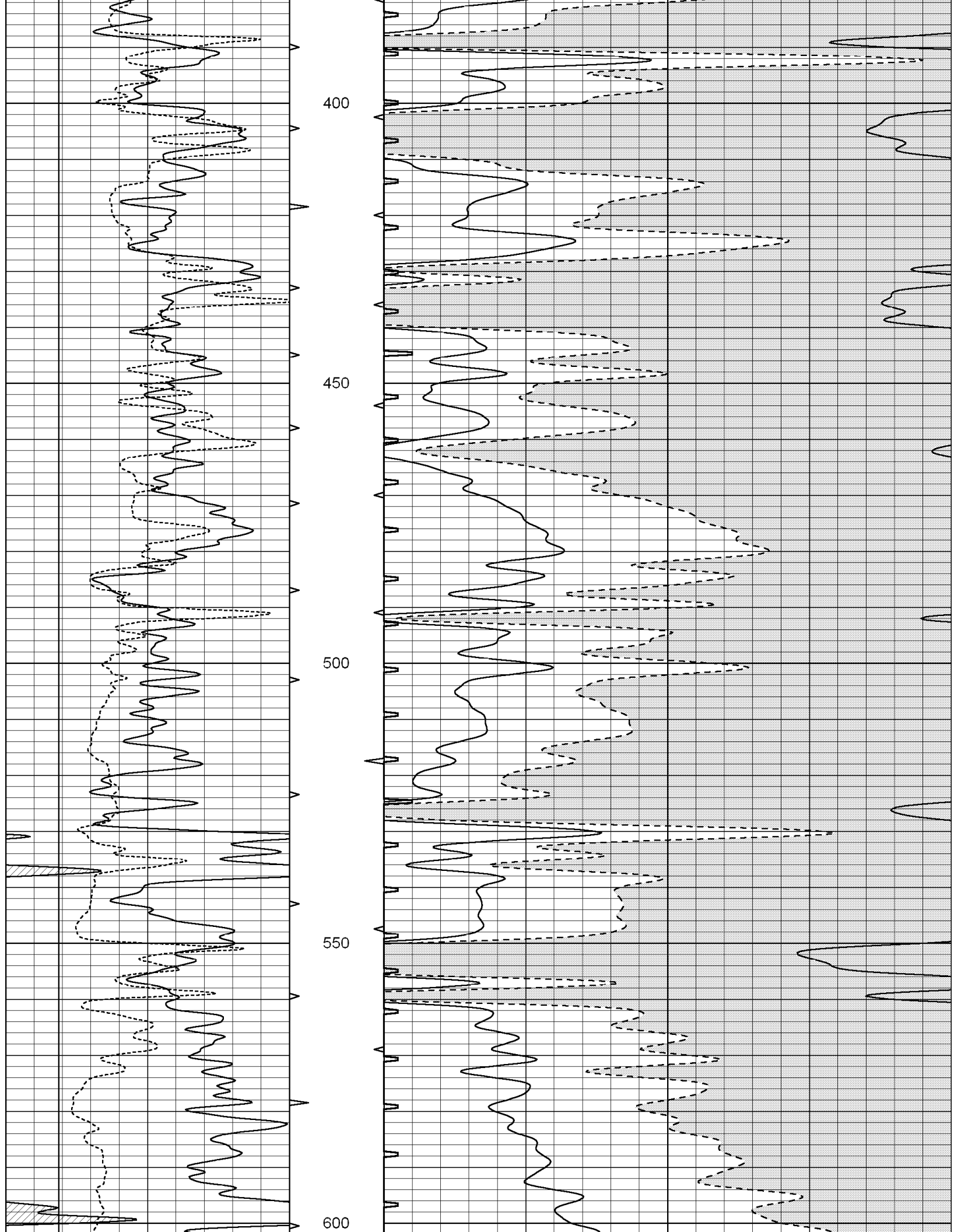
SUPERIOR
Hays,
Kansas

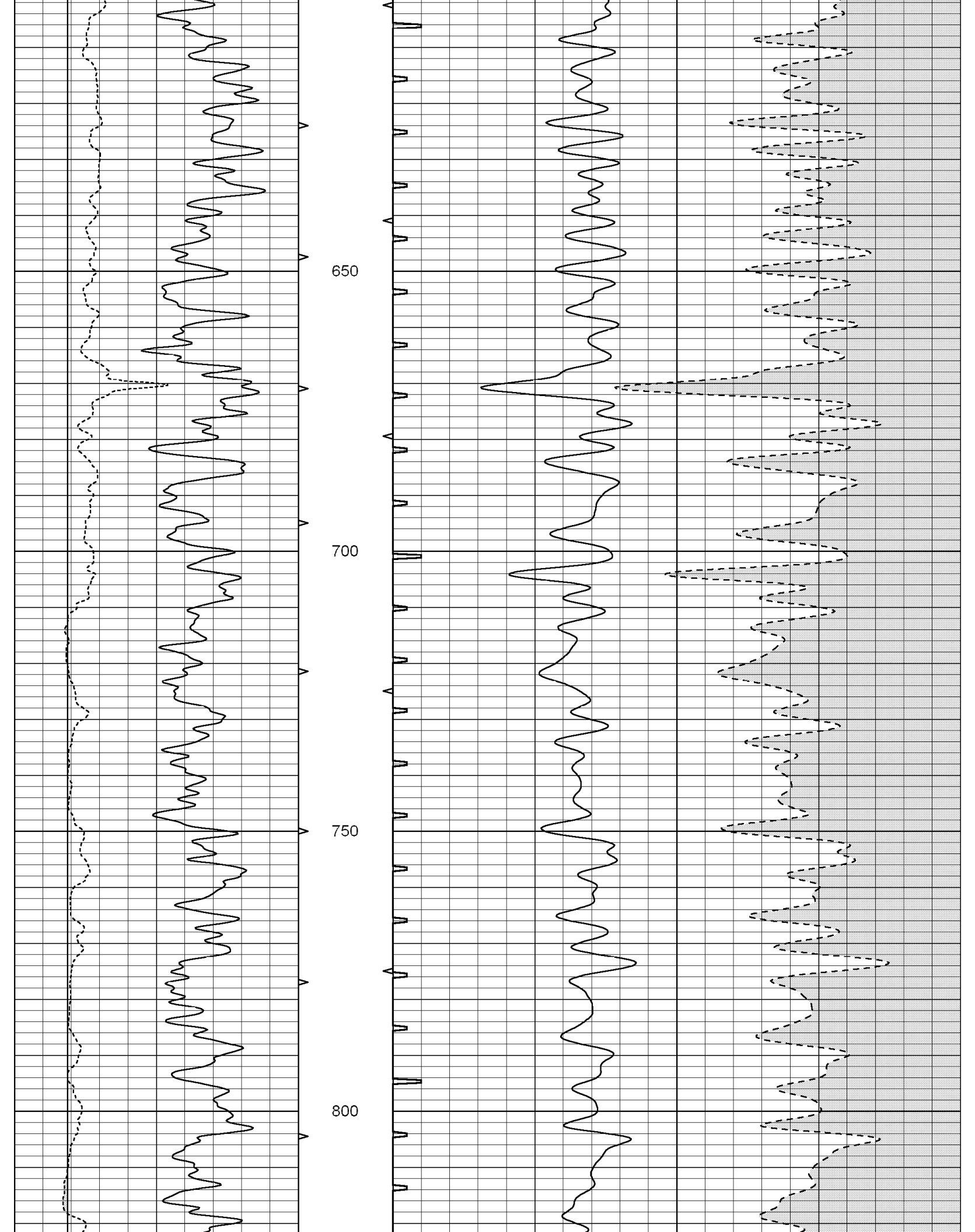
MAIN SECTION

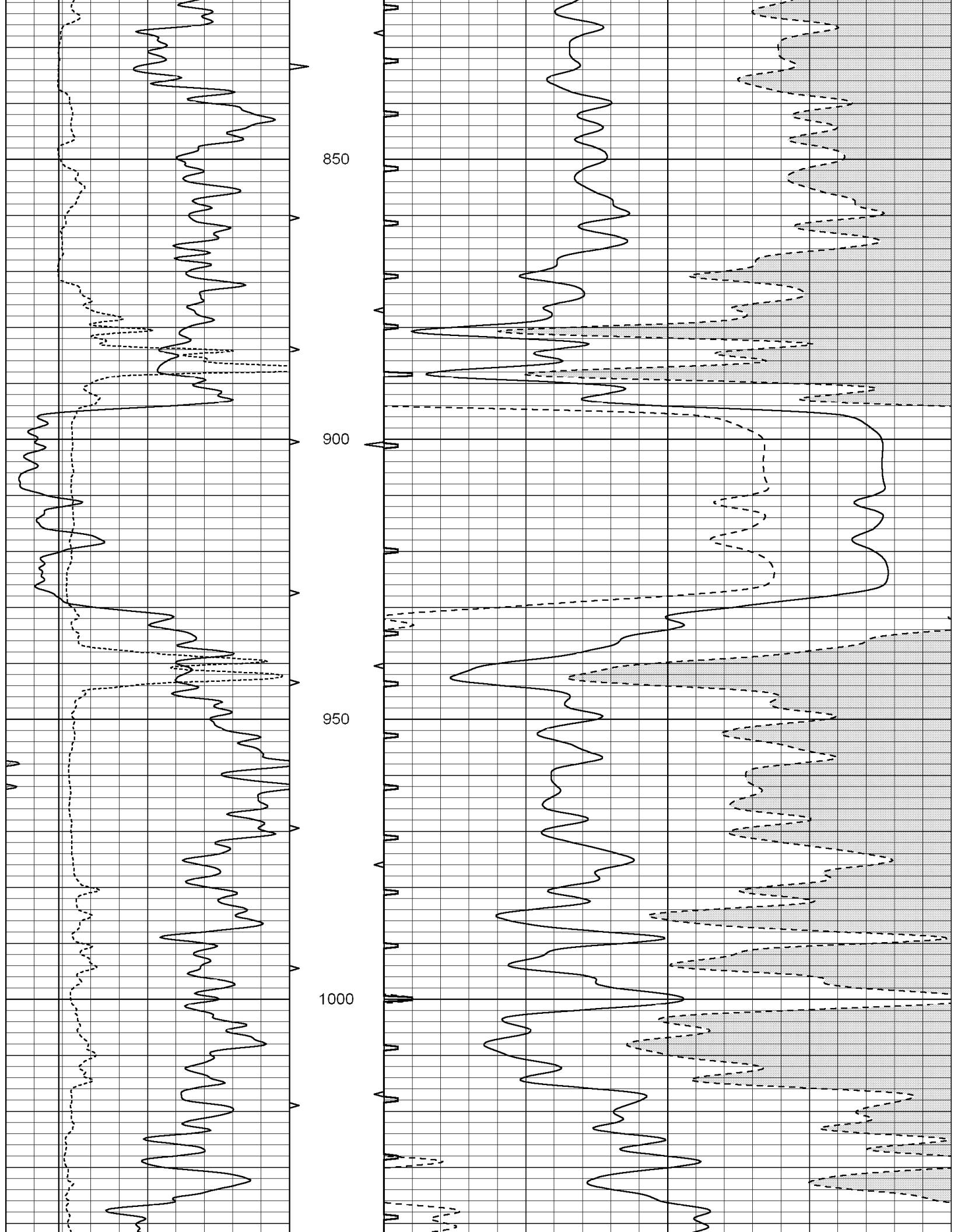
Database File: 003244ddn.db
 Dataset Pathname: pass8.1A
 Presentation Format: slt
 Dataset Creation: Sat Apr 18 00:05:12 2009 by Calc Open-Cased 051020
 Charted by: Depth in Feet scaled 1:240

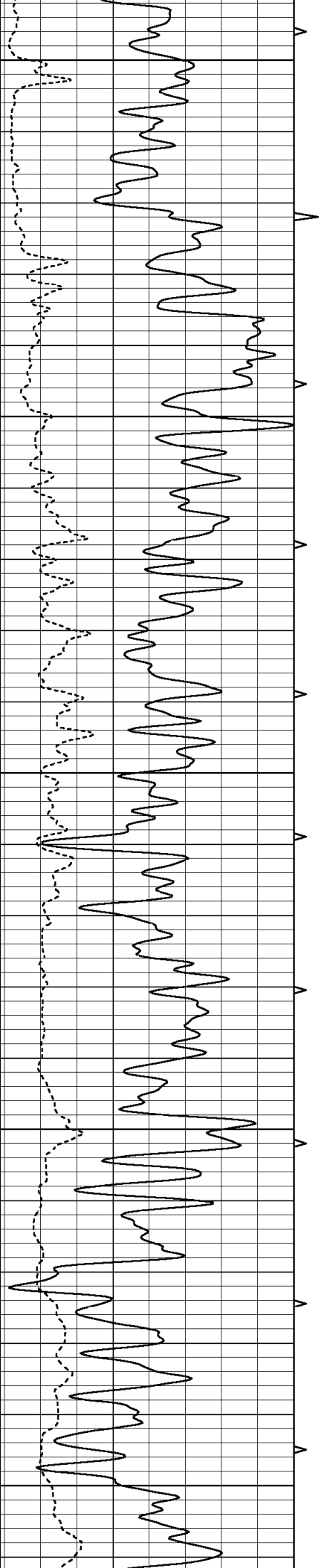
| | | | | | | |
|---|------------------|-----|------------|-----|----------------------|-----|
| 0 | GAMMA RAY (GAPI) | 150 | ABHV | 140 | DELTA TIME (usec/ft) | 40 |
| 6 | CALIPER (in) | 16 | 10 (ft3) 0 | 30 | SONIC POROSITY (pu) | -10 |
| | | | TBHV | 0 | ITT (msec) | 20 |
| | | | 0 (ft3) 10 | | | |



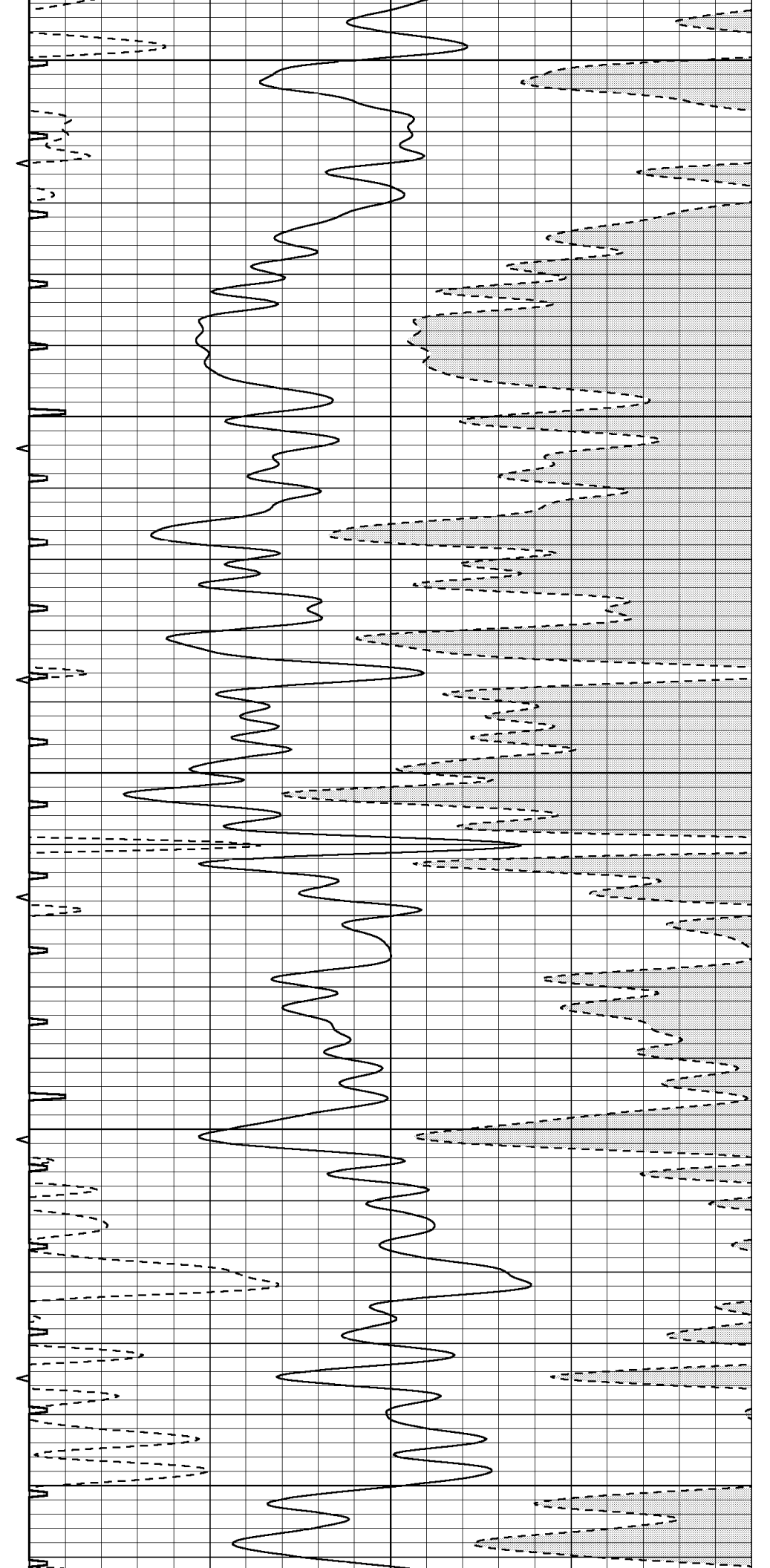


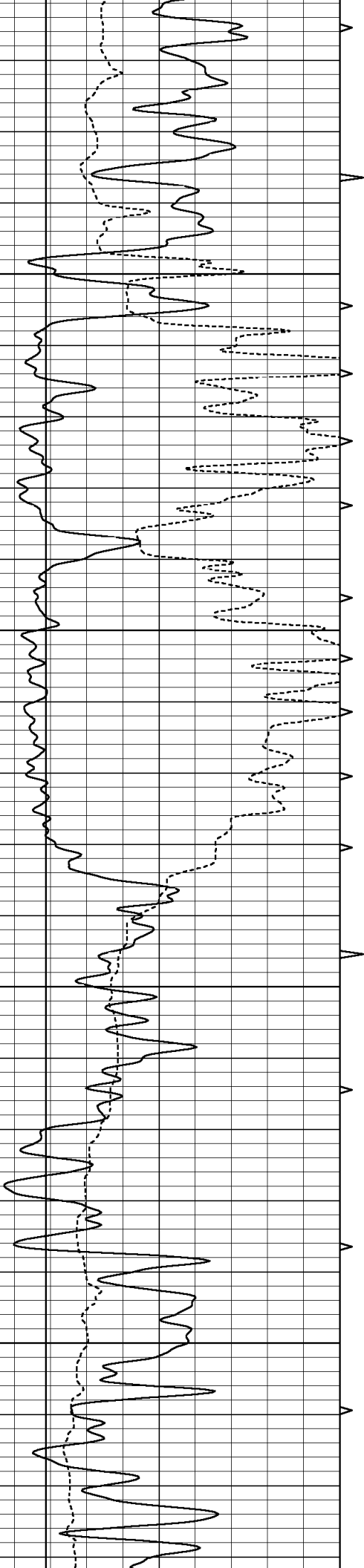






1050
1100
1150
1200
1250



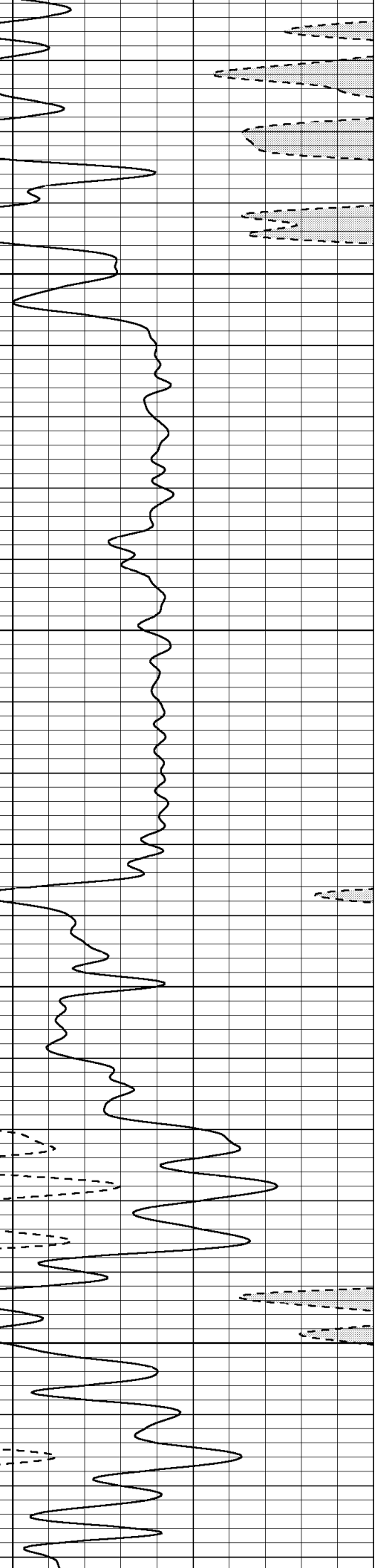
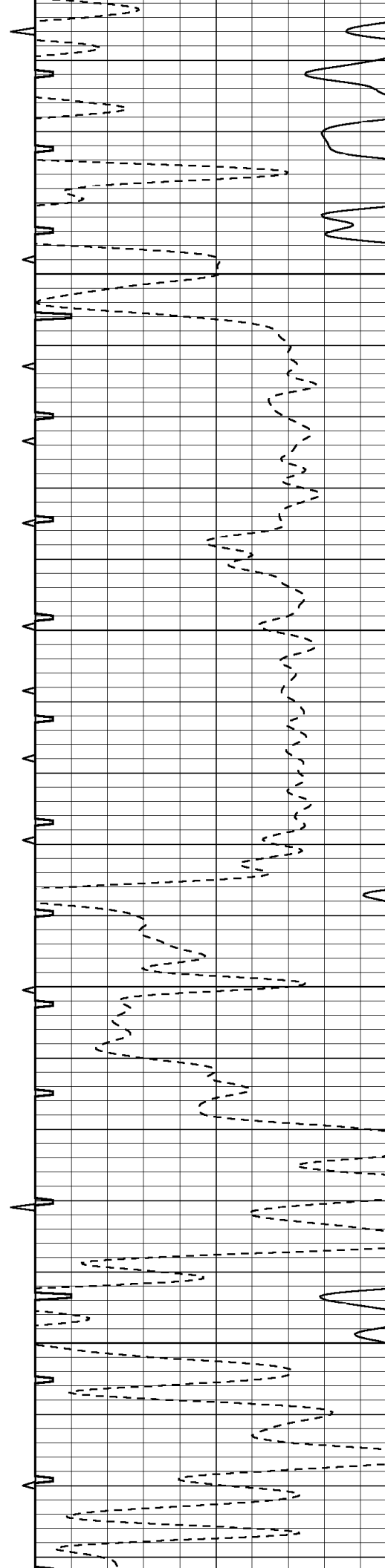


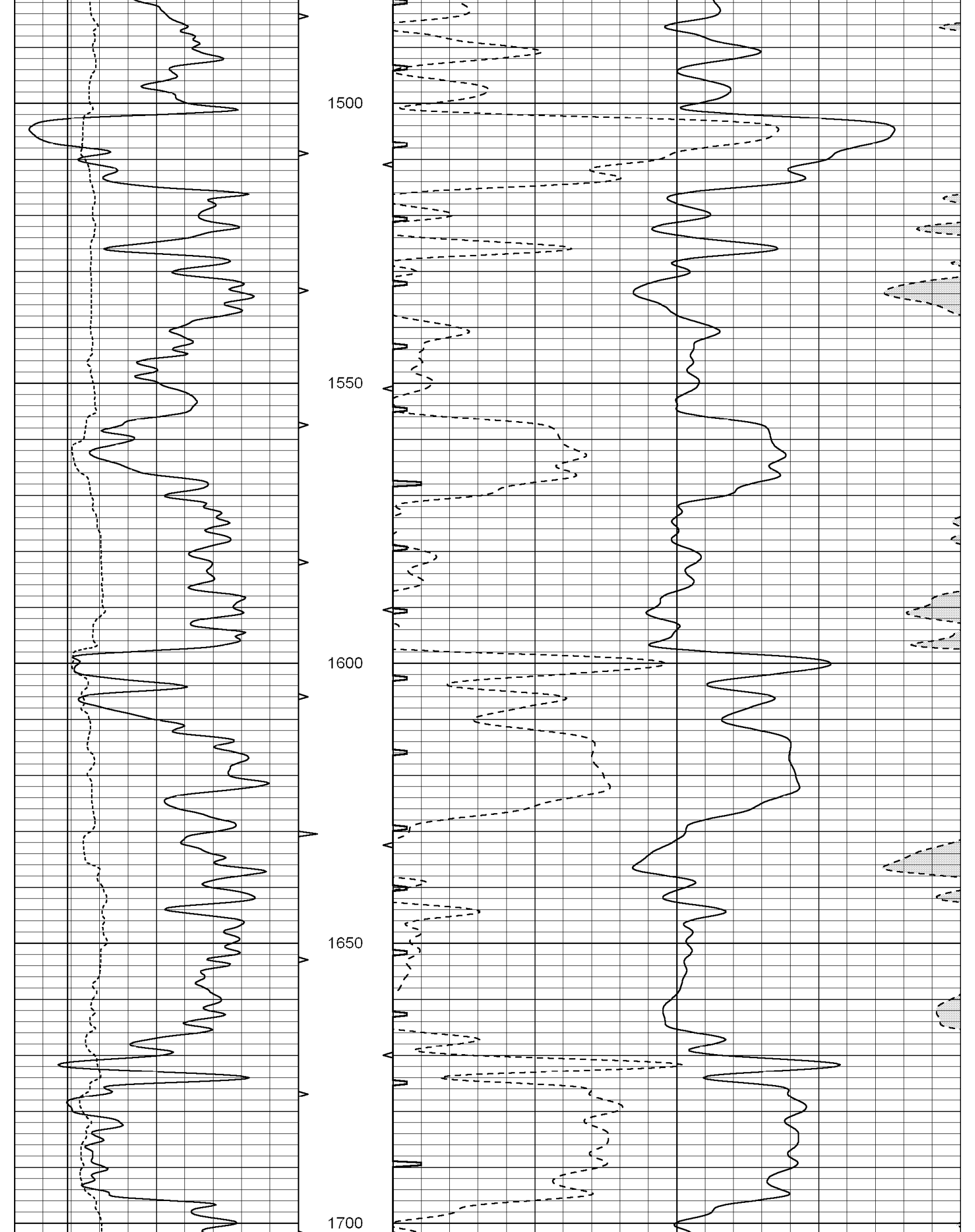
1300

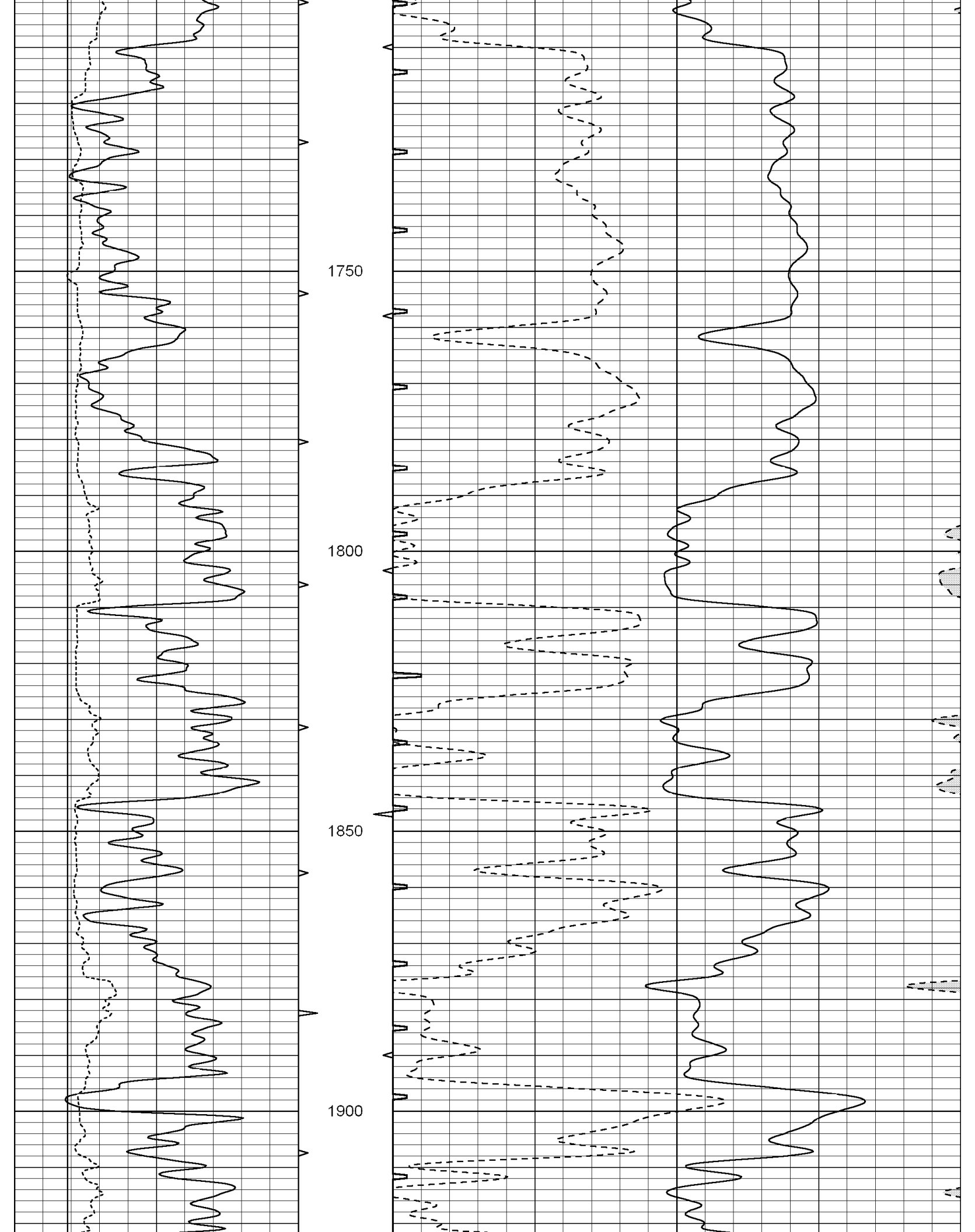
1350

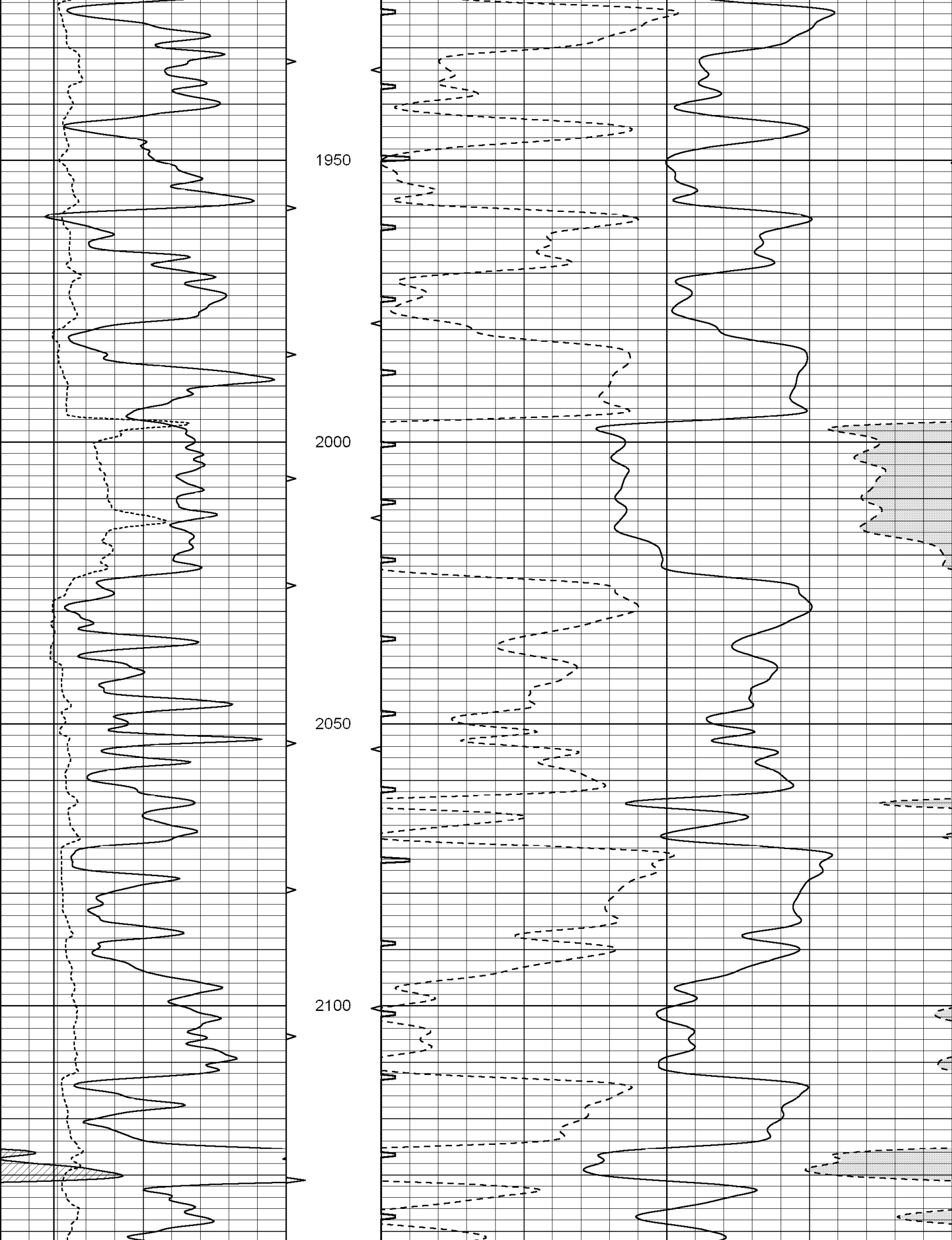
1400

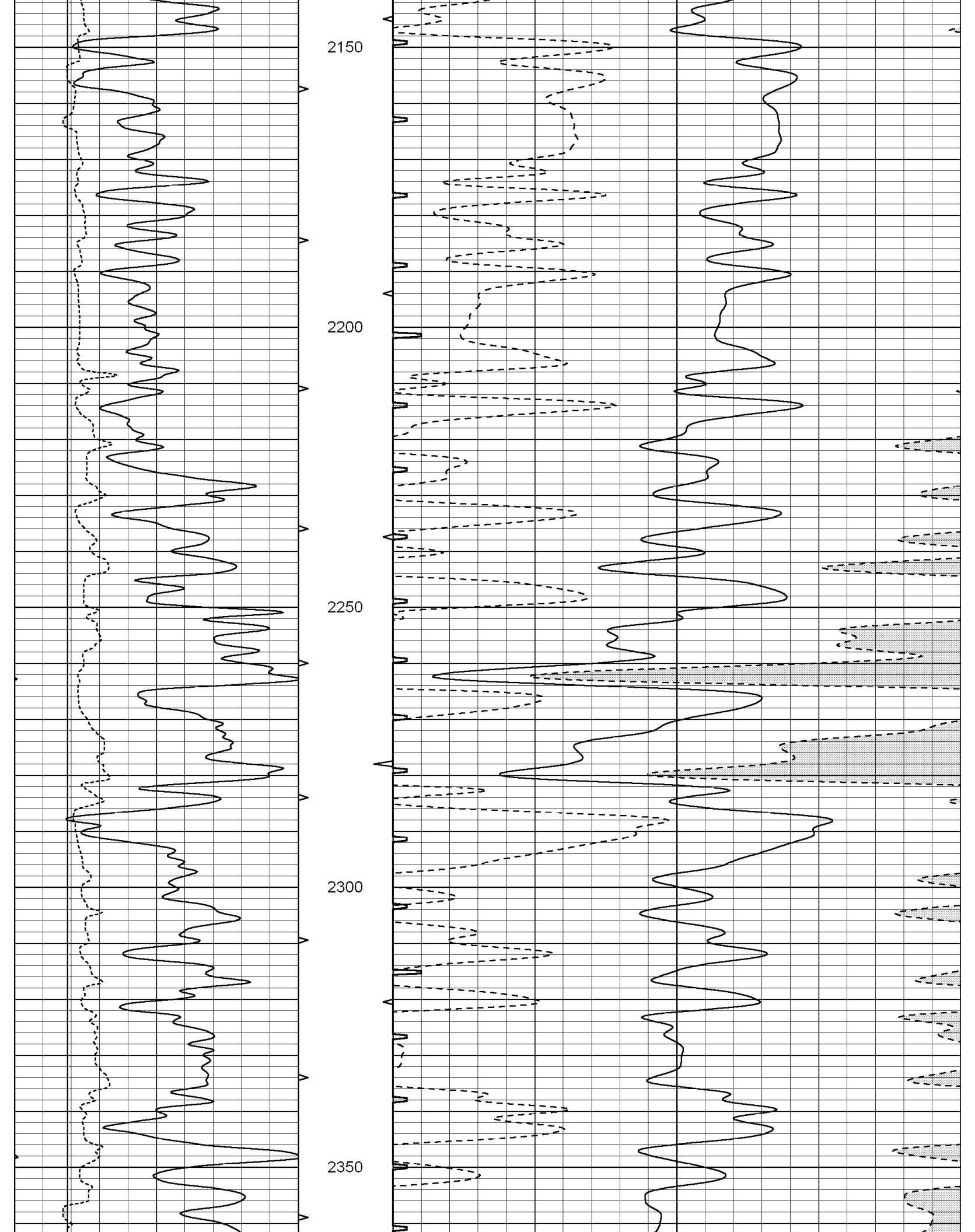
1450

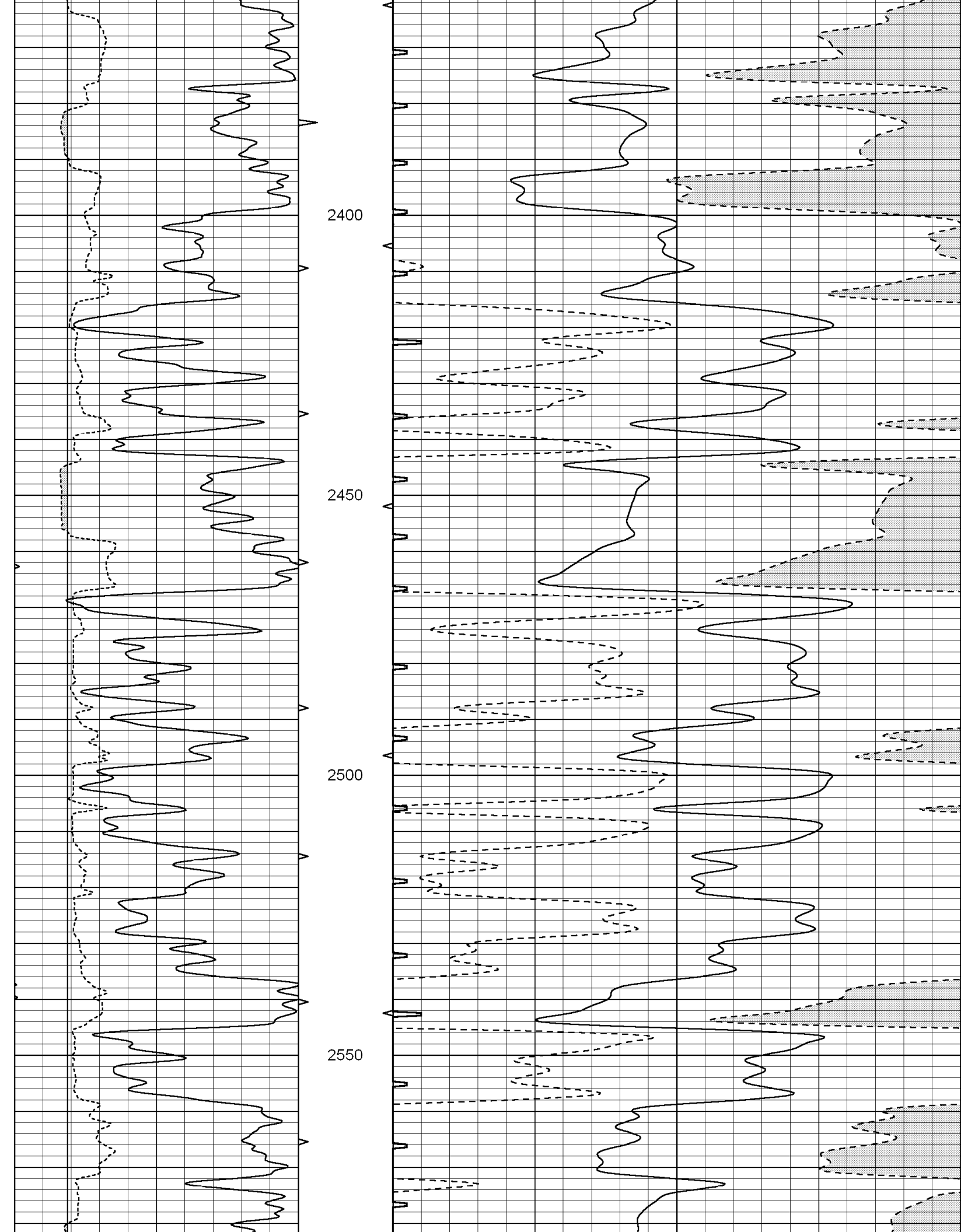


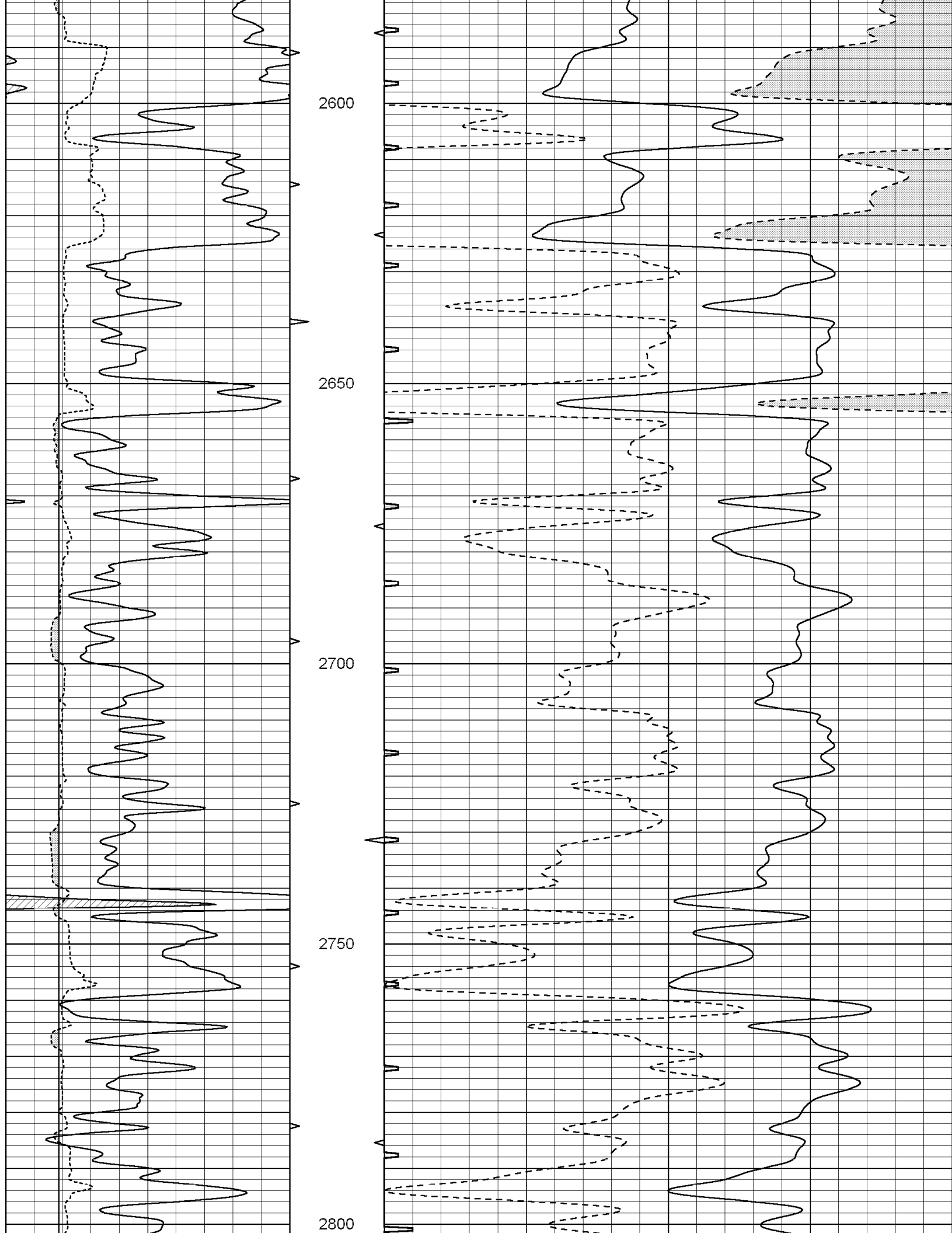


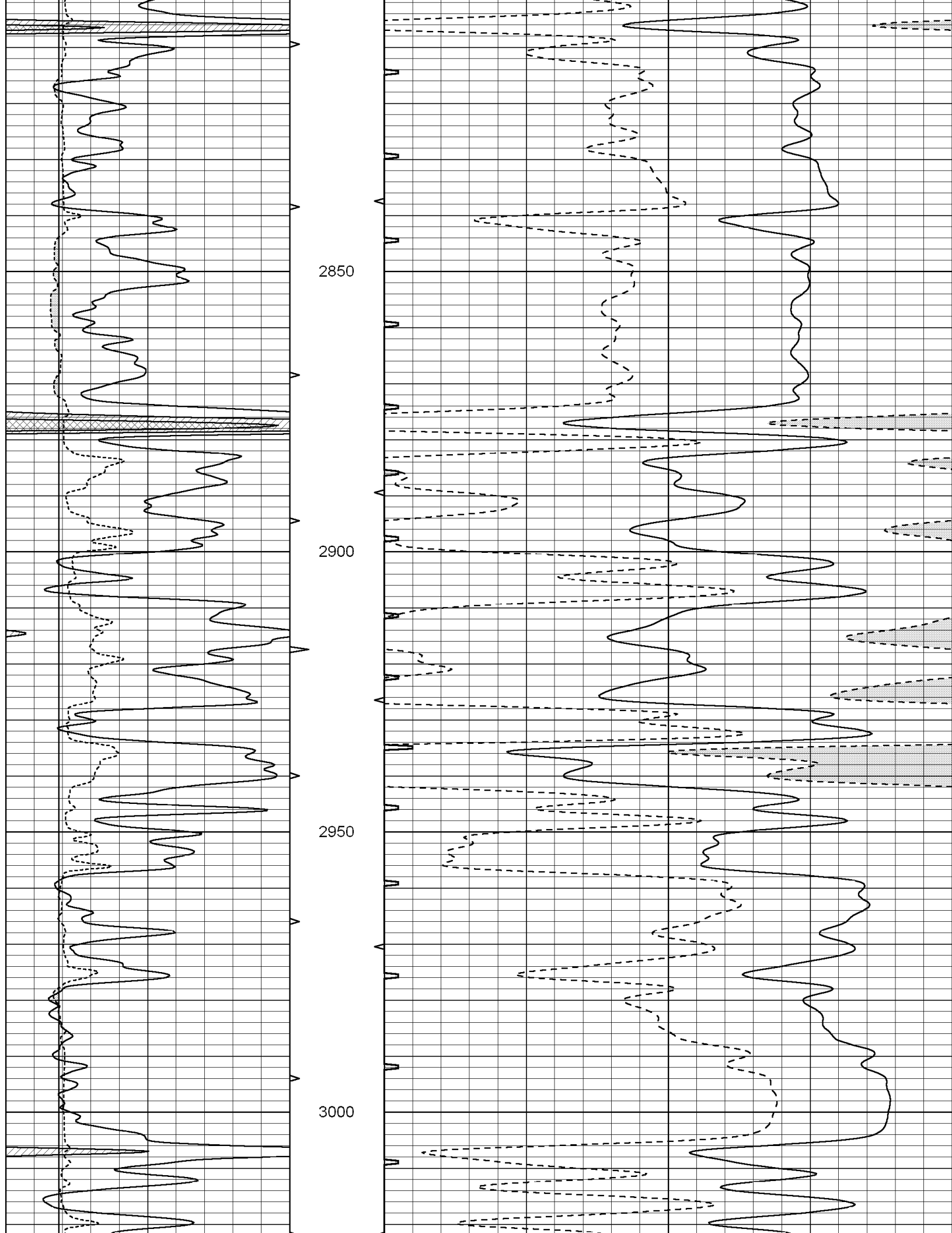


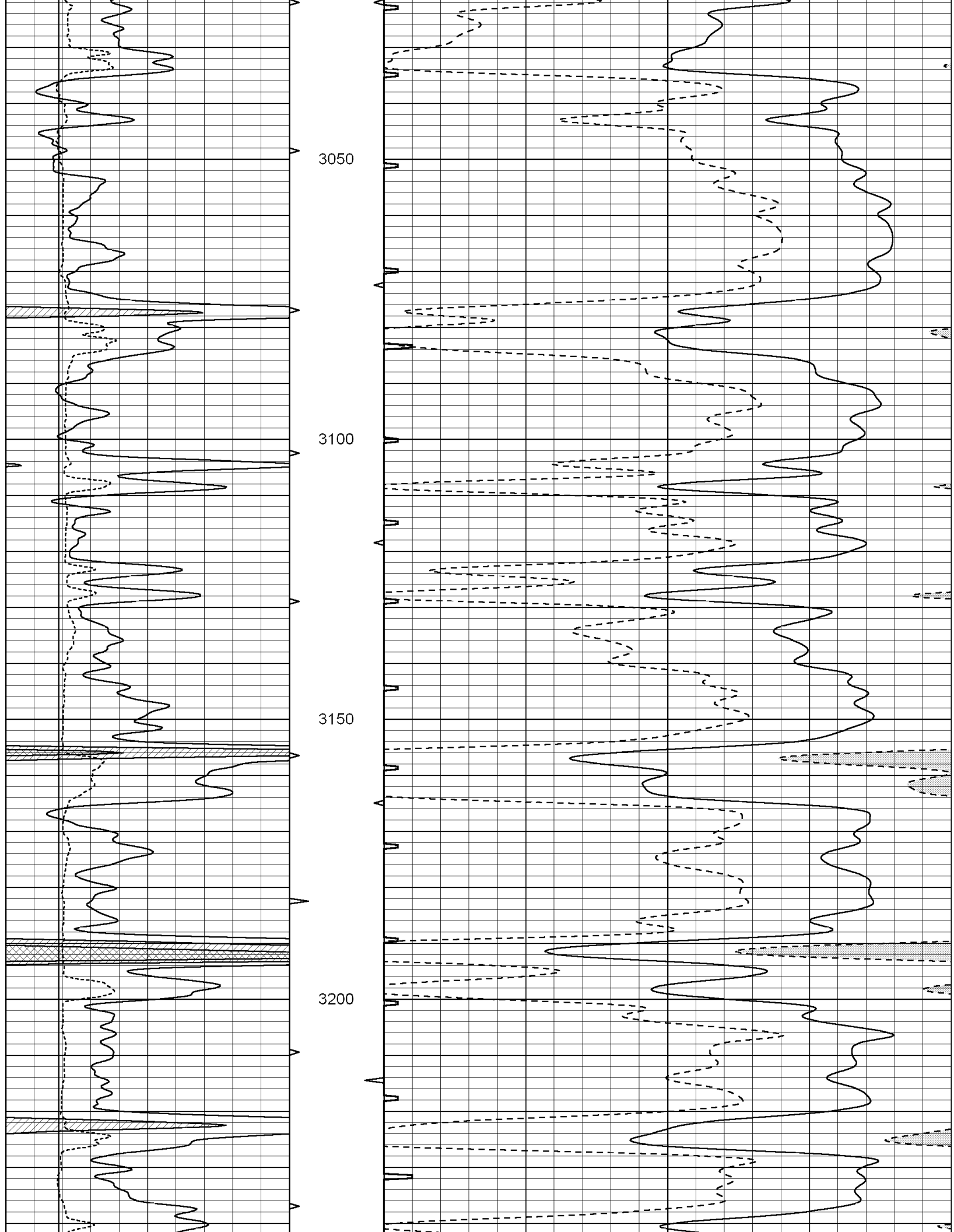


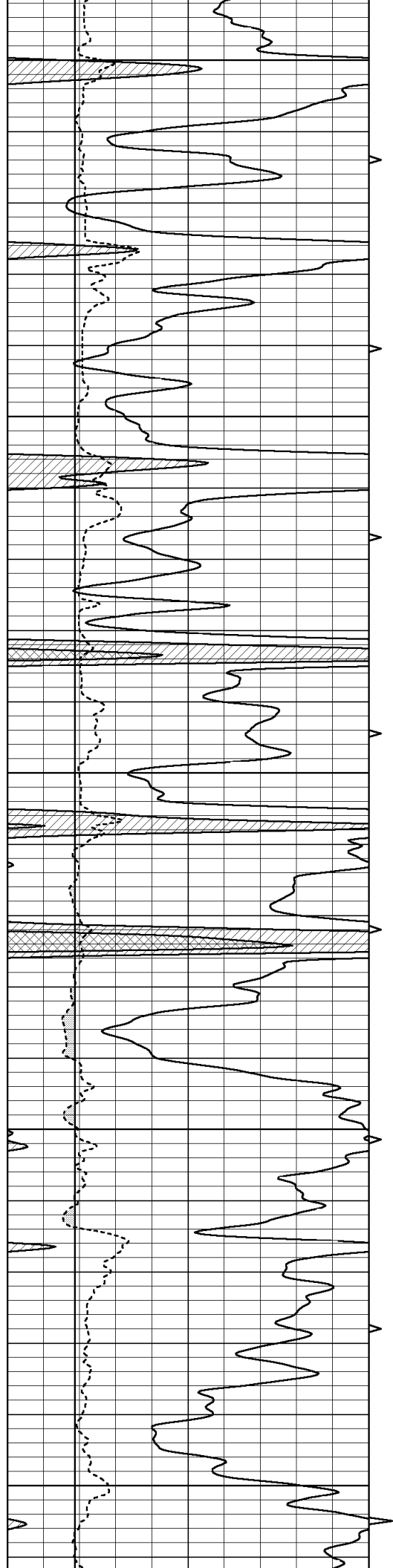












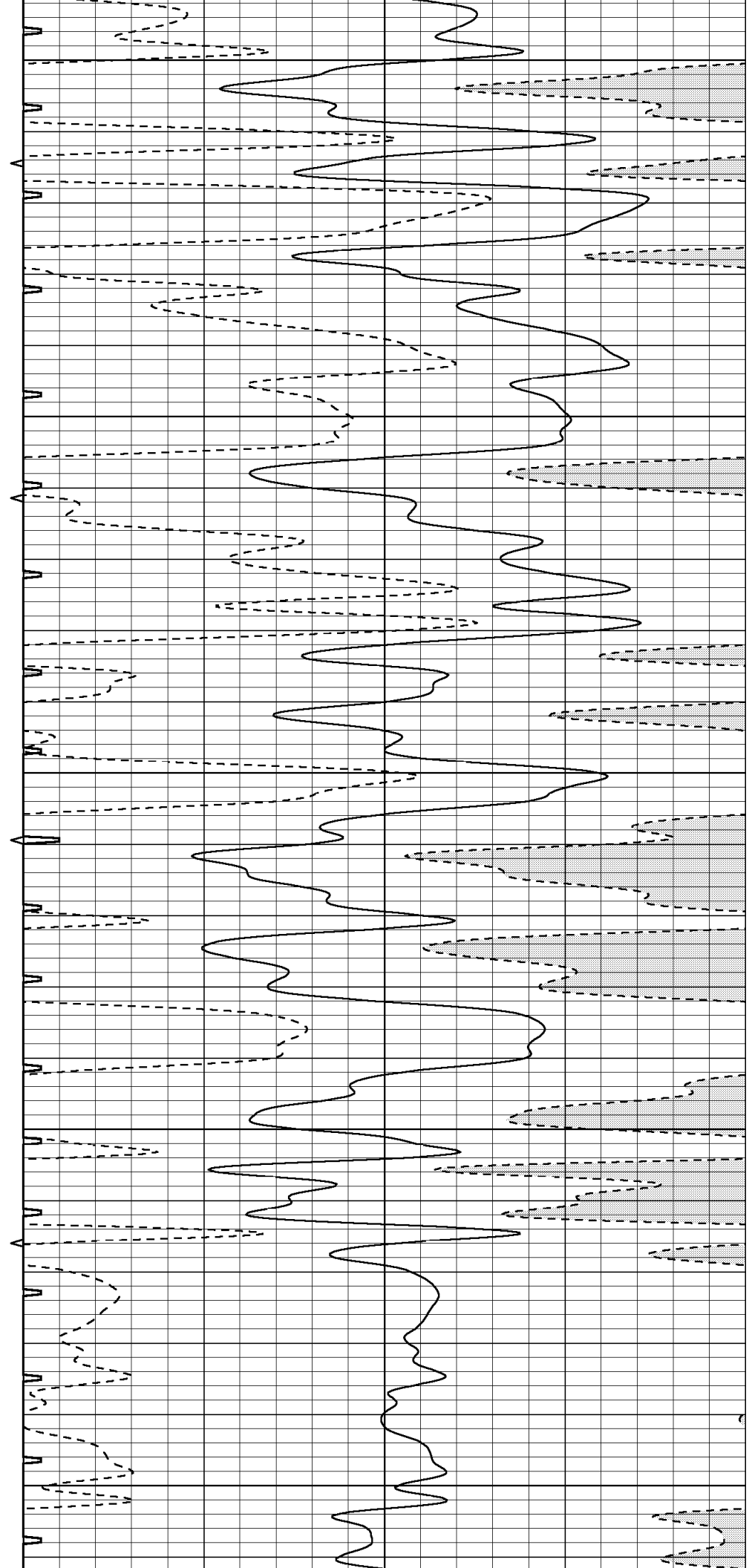
3250

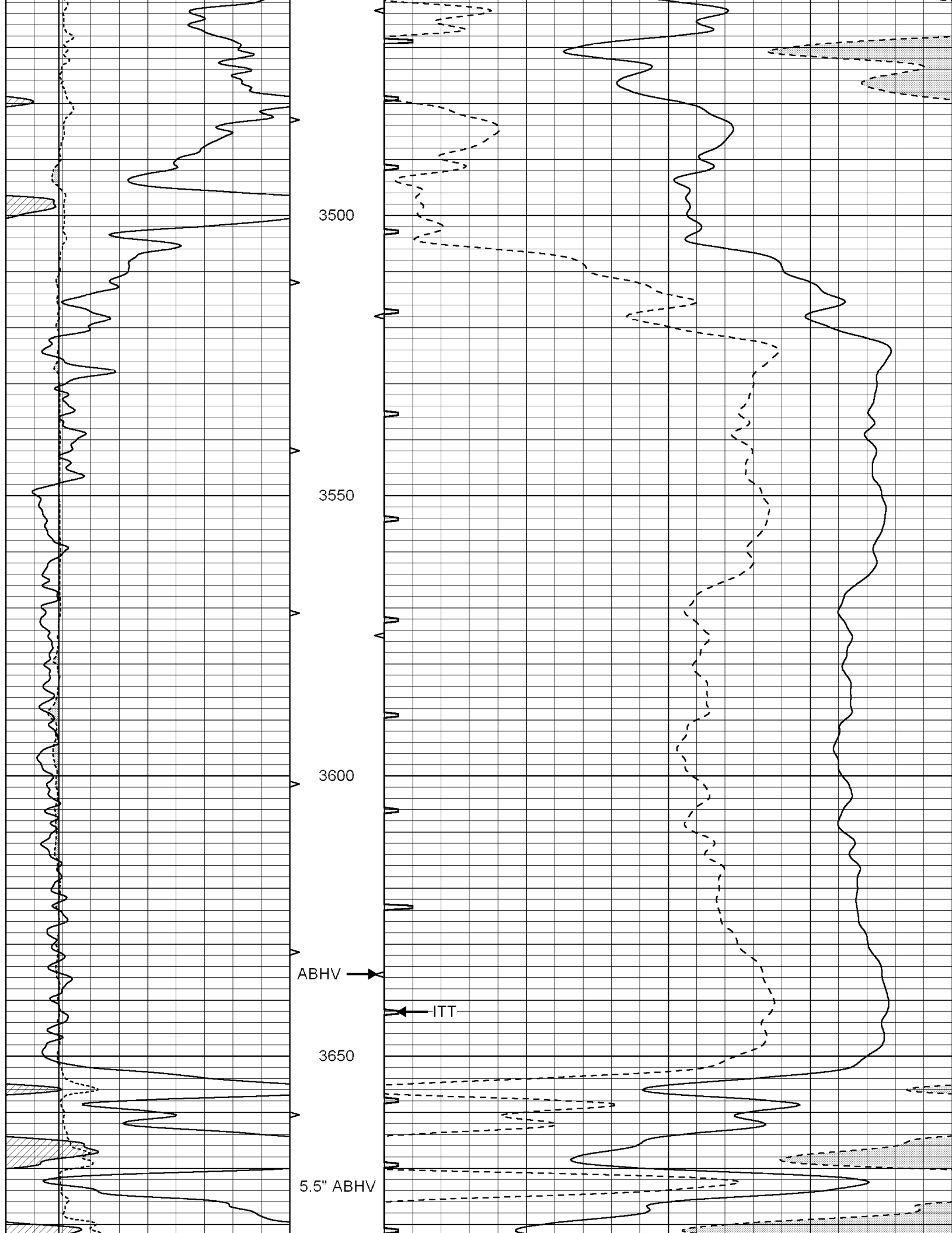
3300

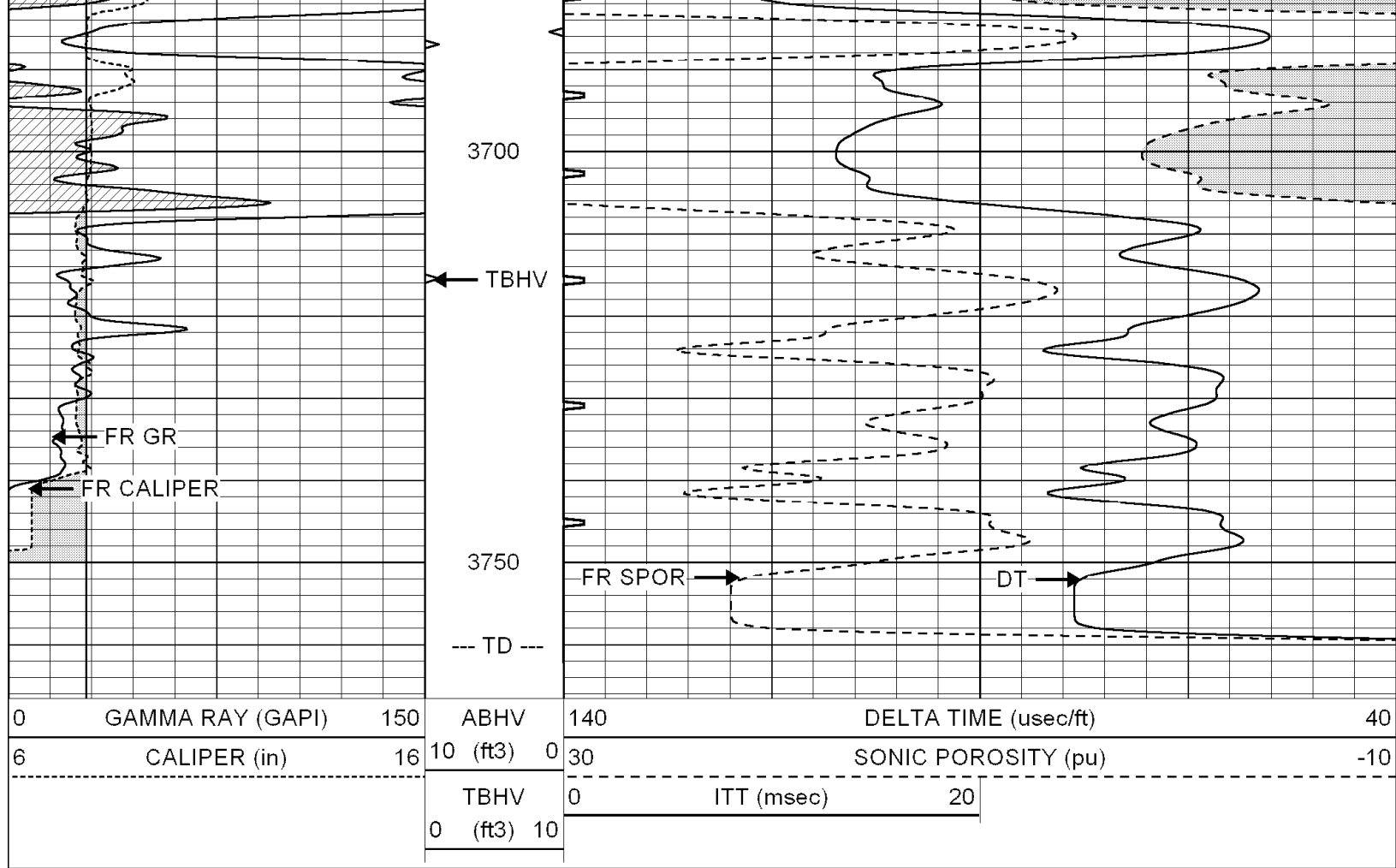
3350

3400

3450







SUPERIOR
Hays,
Kansas

REPEAT SECTION

Database File: 003244ddn.db
 Dataset Pathname: pass7.1A
 Presentation Format: slt
 Dataset Creation: Fri Apr 17 23:30:54 2009 by Calc Open-Cased 051020
 Charted by: Depth in Feet scaled 1:240

| | | | | | | |
|---|------------------|-----|------------|-----|----------------------|-----|
| 0 | GAMMA RAY (GAPI) | 150 | ABHV | 140 | DELTA TIME (usec/ft) | 40 |
| 6 | CALIPER (in) | 16 | 10 (ft3) 0 | 30 | SONIC POROSITY (pu) | -10 |
| | | | TBHV | 0 | ITT (msec) | 20 |
| | | | 0 (ft3) 10 | | | |

