



**SUPERIOR  
Hays,  
Kansas**

**DUAL  
INDUCTION  
LOG**

Company DREILING OIL, INC.  
Well SCHULTZE #1  
Field  
County OSBORNE  
State KANSAS

Company DREILING OIL, INC.  
Well SCHULTZE #1  
Field  
County OSBORNE State KANSAS

Location: API #: 15-141-20401  
1850' FSL & 2980' FEL  
E/2 - NE - SW  
SEC 28 TWP 8S RGE 13W  
Permanent Datum GROUND LEVEL Elevation 1705  
Log Measured From KELLY BUSHING 8' A.G.L.  
Drilling Measured From KELLY BUSHING  
Other Services  
CDL/CNL  
SONIC/MEL  
Elevation  
K.B. 1713  
D.F.  
G.L. 1705

Date	4-17-09
Run Number	ONE
Depth Driller	3760
Depth Logger	3760
Bottom Logged Interval	3758
Top Log Interval	00
Casing Driller	222
Casing Logger	221
Bit Size	7.875
Type Fluid in Hole	CHEMICAL MUD
Density / Viscosity	9.3 / 48
pH / Fluid Loss	10.0 / 8.0
Source of Sample	FLOWLINE
Rim @ Meas. Temp	0.85 @ 84F
Rmf @ Meas. Temp	0.64 @ 84F
Rmc @ Meas. Temp	1.02 @ 84F
Source of Rmf / Rmc	MEASURED
Rm @ BHT	.640 @ 112F
Time Circulation Stopped	2 HOURS
Time Logger on Bottom	
Maximum Recorded Temperature	112F
Equipment Number	0860
Location	HAYS, KS.
Recorded By	RUPP
Witnessed By	BILL REE

<<< Fold Here >>>

All interpretations are opinions based on inferences from electrical or other measurements and we cannot and do not guarantee the accuracy or correctness of any interpretation, and we shall not, except in the case of gross or willful negligence on our part, be liable or responsible for any loss, costs, damages, or expenses incurred or sustained by anyone resulting from any interpretation made by any of our officers, agents or employees. These interpretations are also subject to our general terms and conditions set out in our current Price Schedule.

Comments

SUPERIOR WELL SERVICES  
 785-628-6395  
 THANK YOU FOR YOUR BUSINESS  
 DIRECTIONS: WALDO, 5N TO THE STOP SIGN, N TO COVERT, 2N & E TO CURVE, 1/2N, E INTO.

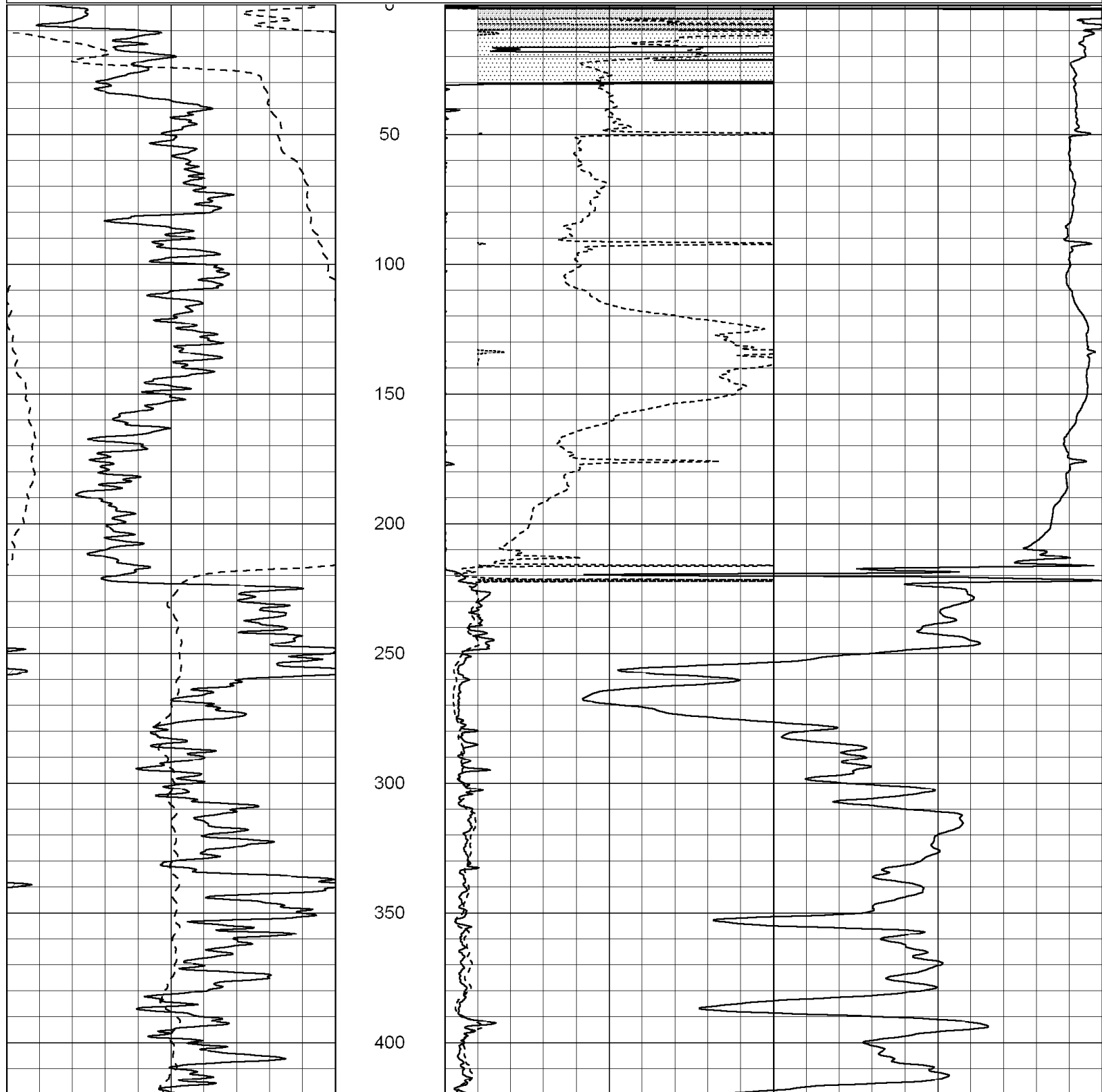


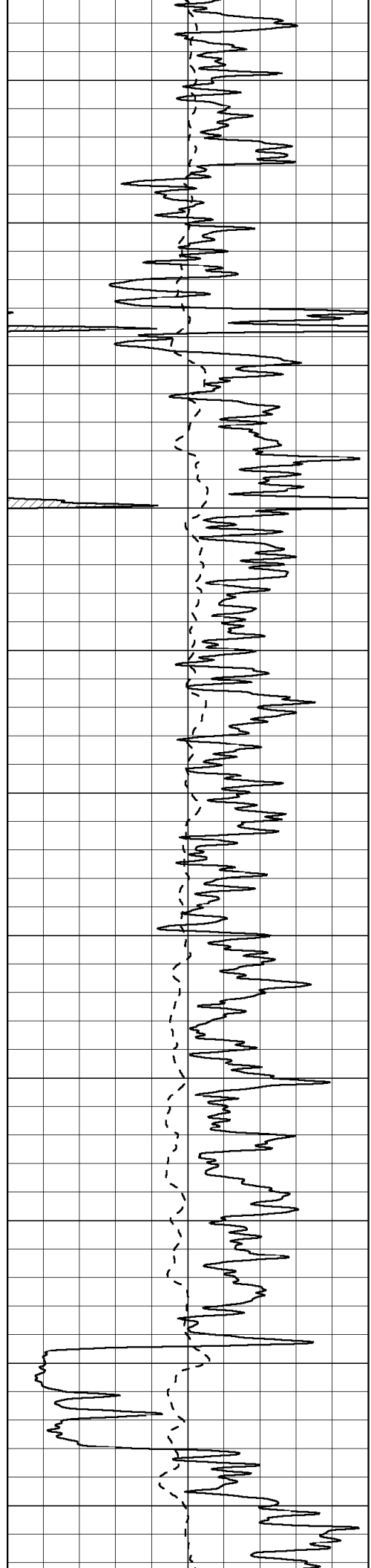
**SUPERIOR  
Hays,  
Kansas**

# MAIN SECTION

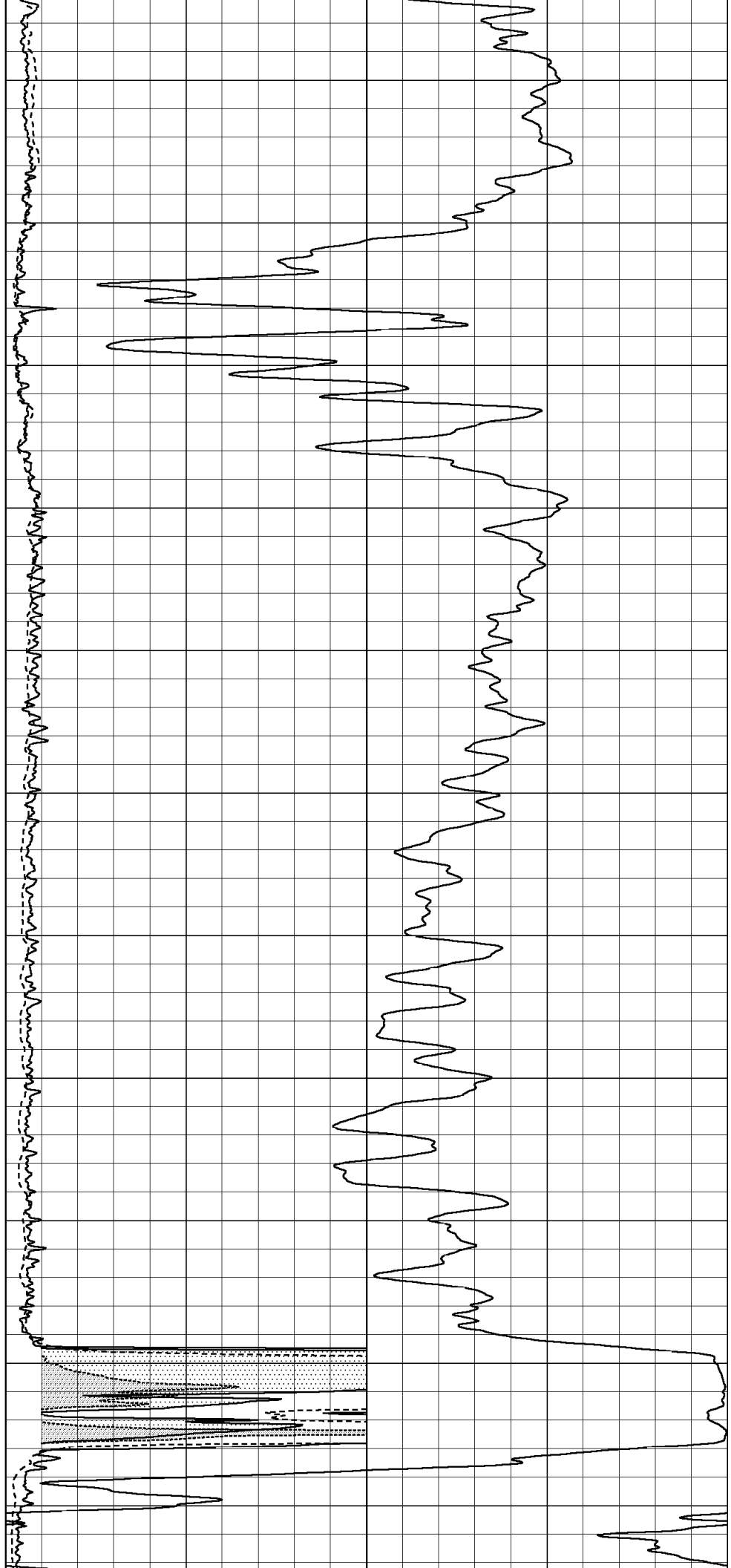
Database File: 003244ddn.db  
 Dataset Pathname: pass6.A  
 Presentation Format: dil2  
 Dataset Creation: Fri Apr 17 22:54:31 2009  
 Charted by: Depth in Feet scaled 1:600

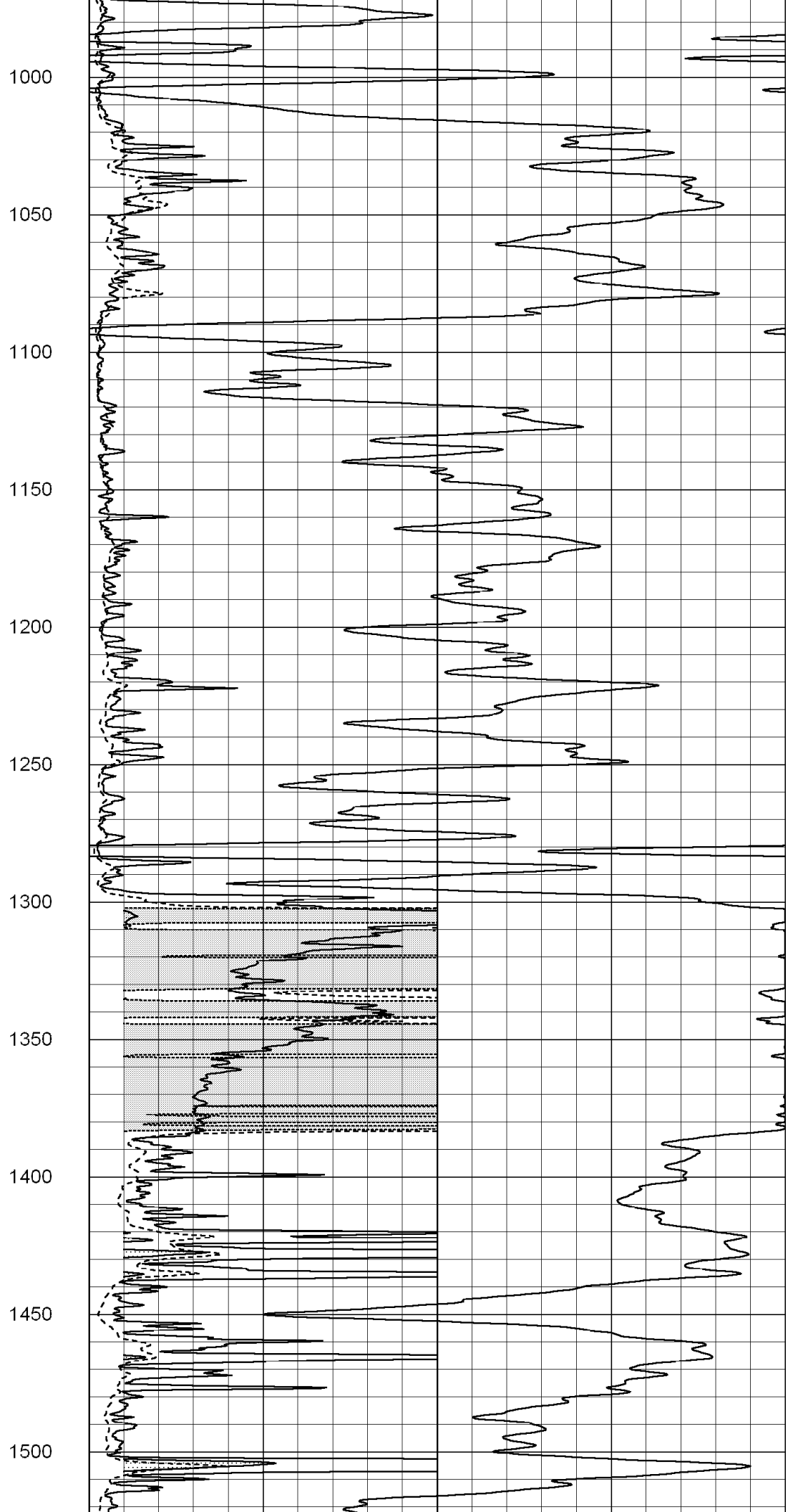
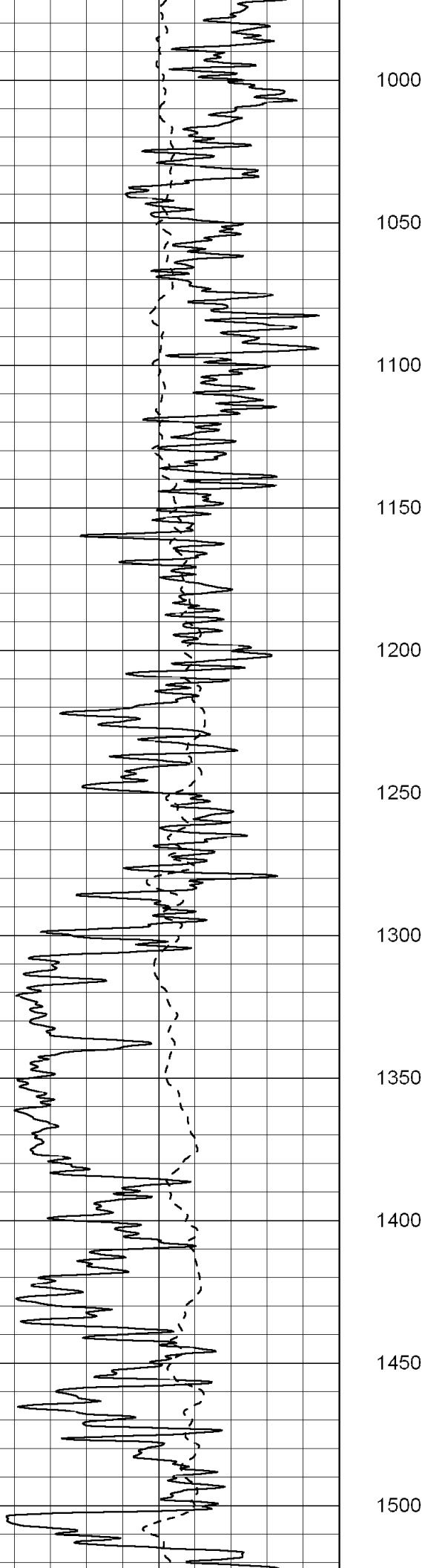
0	Gamma Ray (GAPI)	150	0	RLL3 (Ohm-m)	50
-100	SP (mV)	100	0	Deep Induction (Ohm-m)	50
-----			1000	CILD (mmho-m)	0
			50	RILD X10 (Ohm-m)	500
			50	RLL3 X10 (Ohm-m)	500

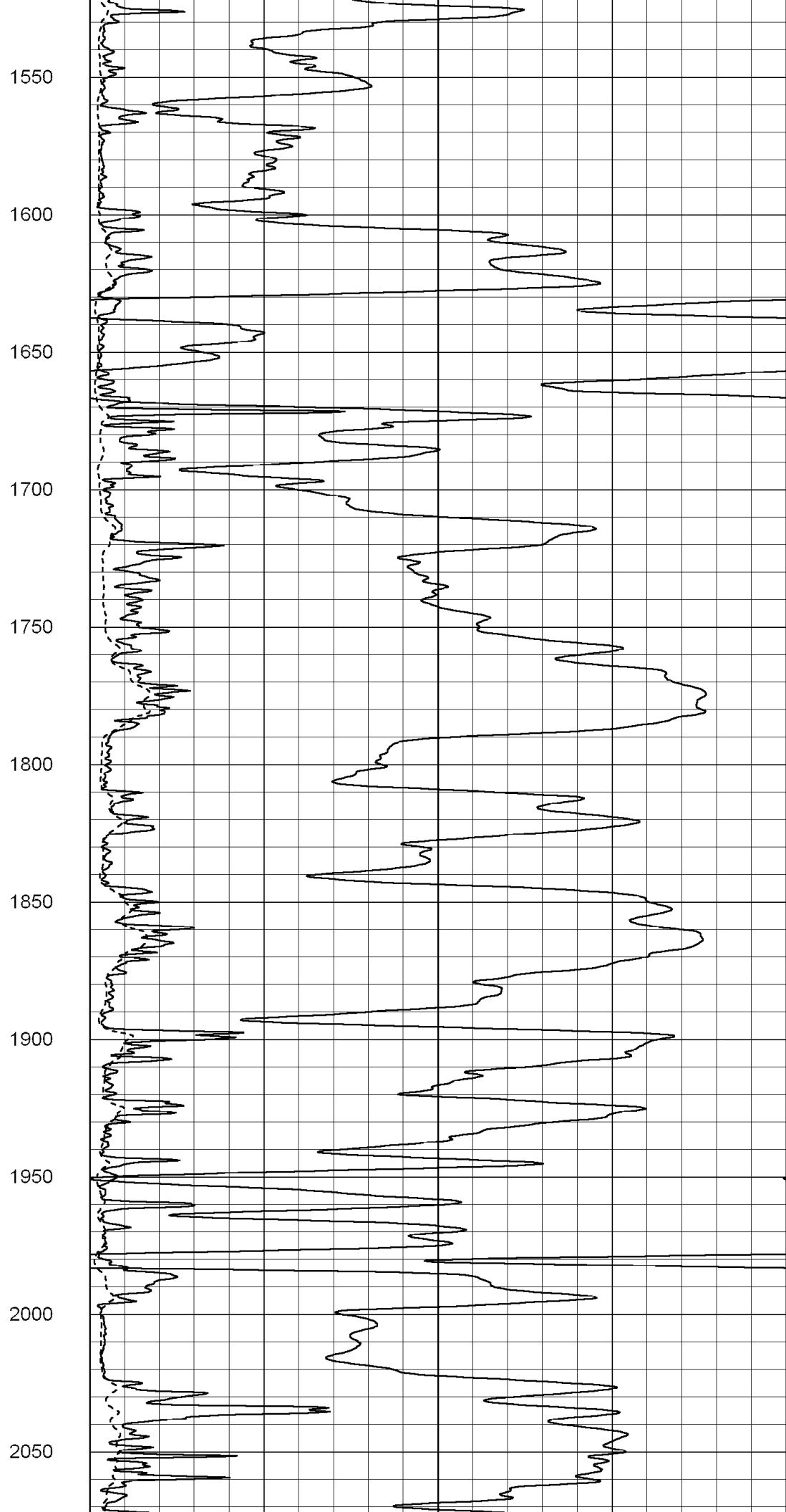
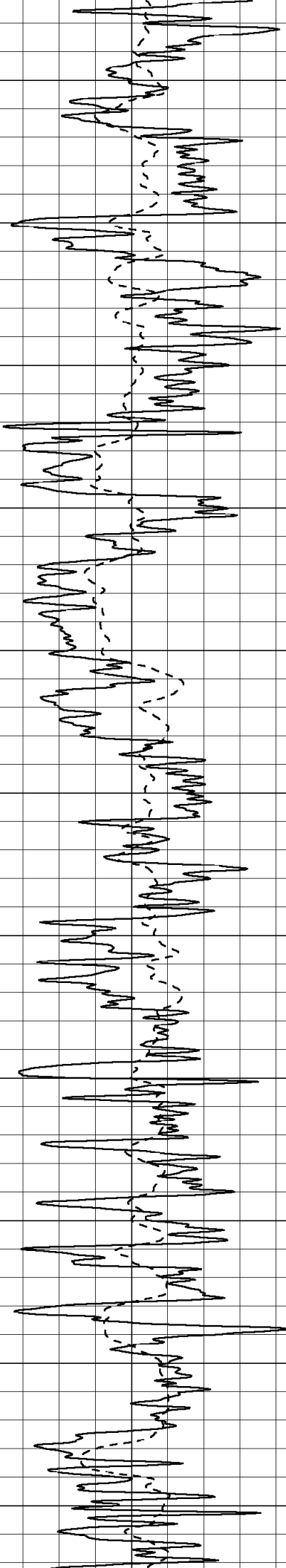


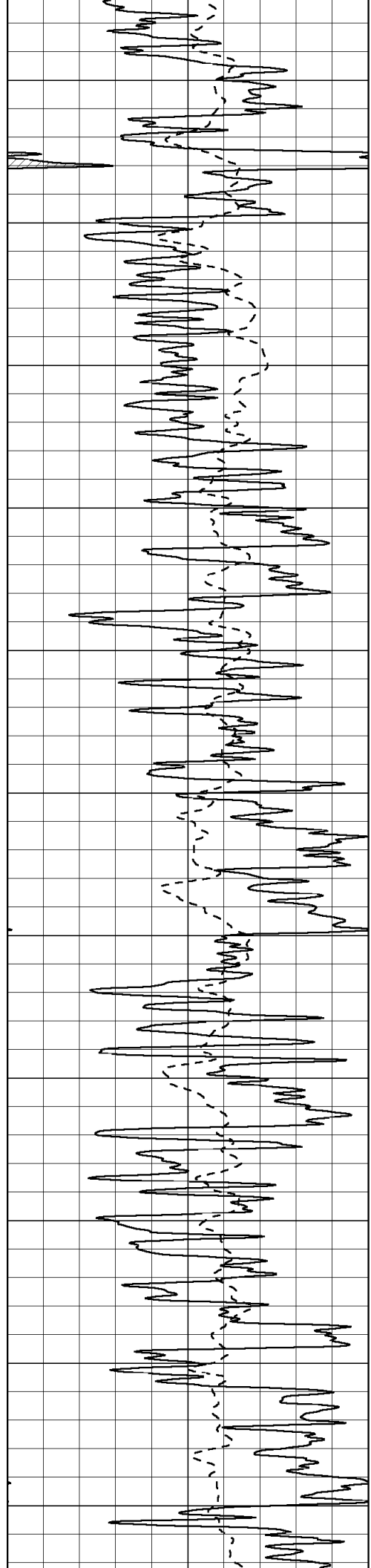


450  
500  
550  
600  
650  
700  
750  
800  
850  
900  
950









2100

2150

2200

2250

2300

2350

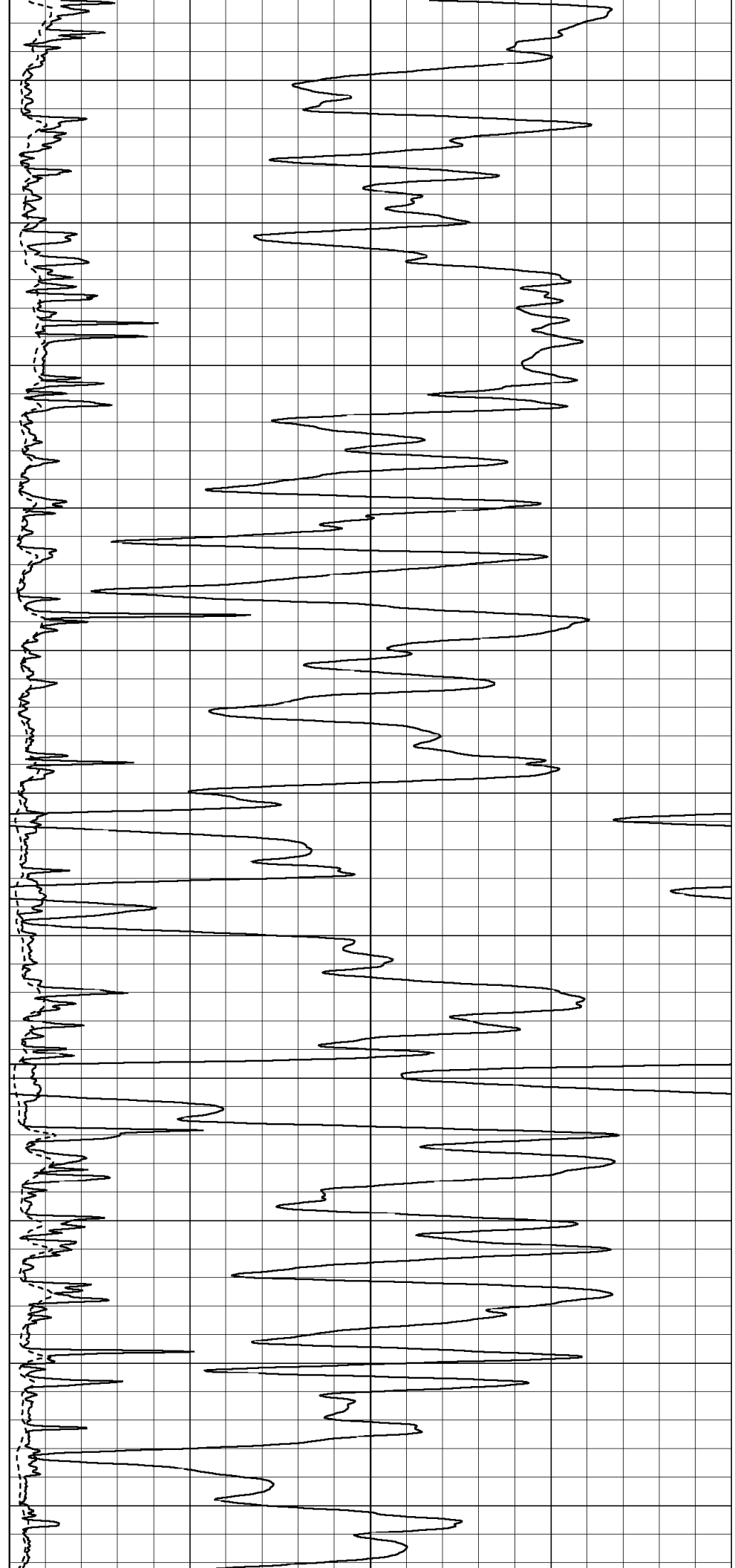
2400

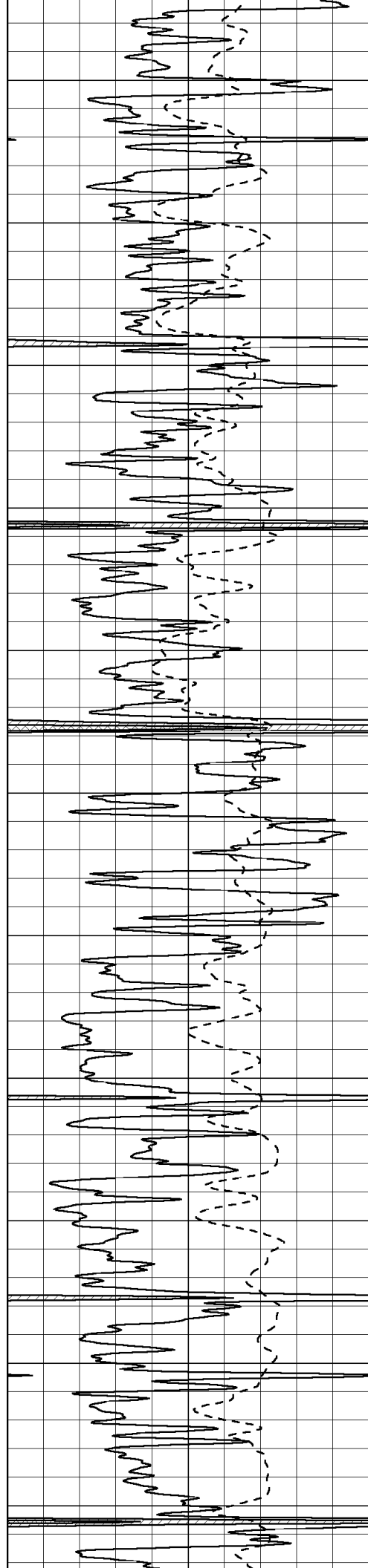
2450

2500

2550

2600





2650

2700

2750

2800

2850

2900

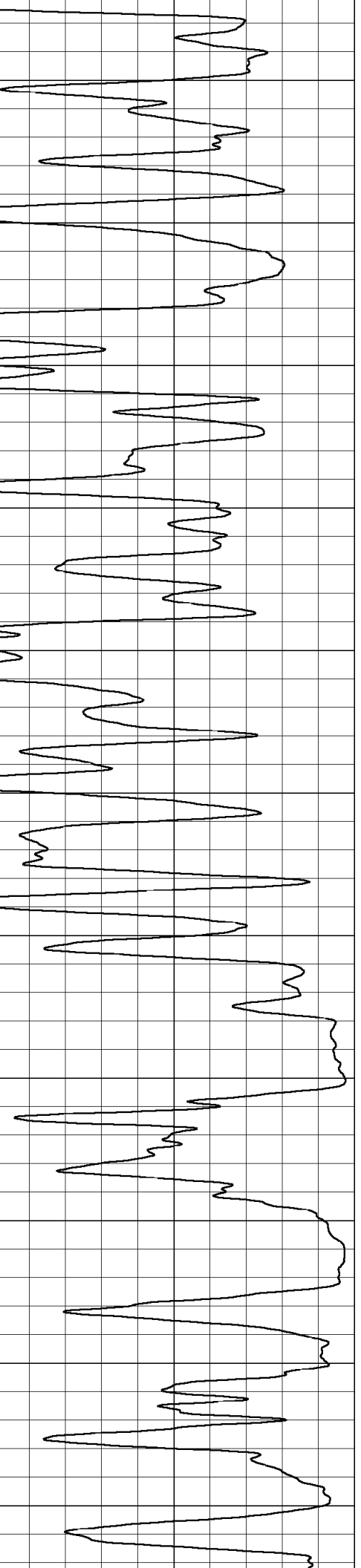
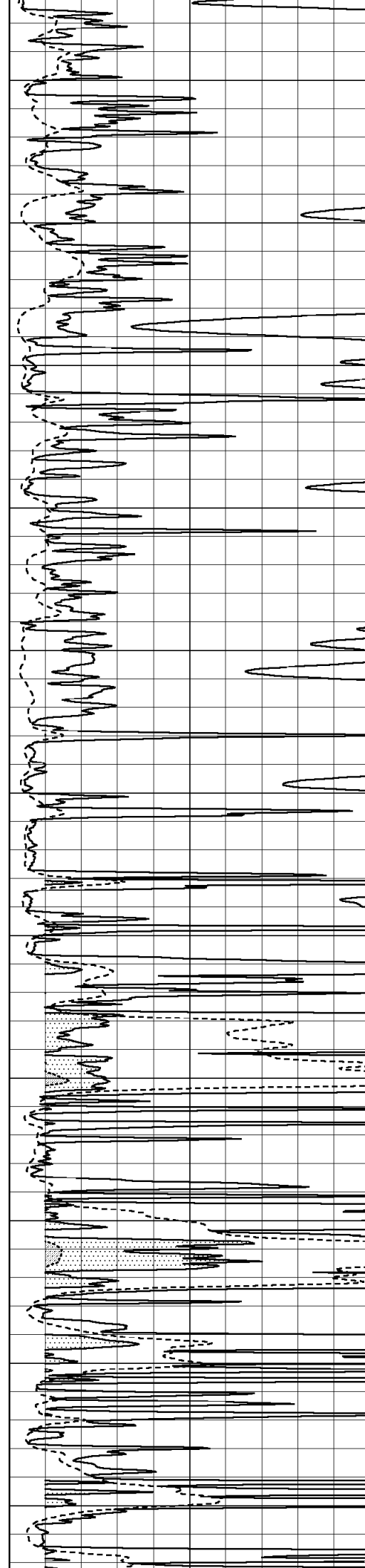
2950

3000

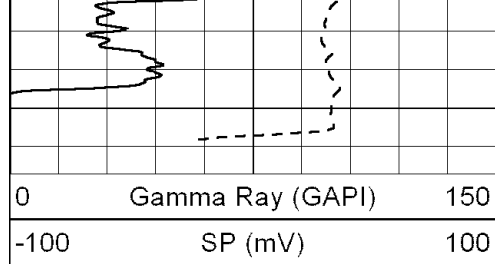
3050

3100

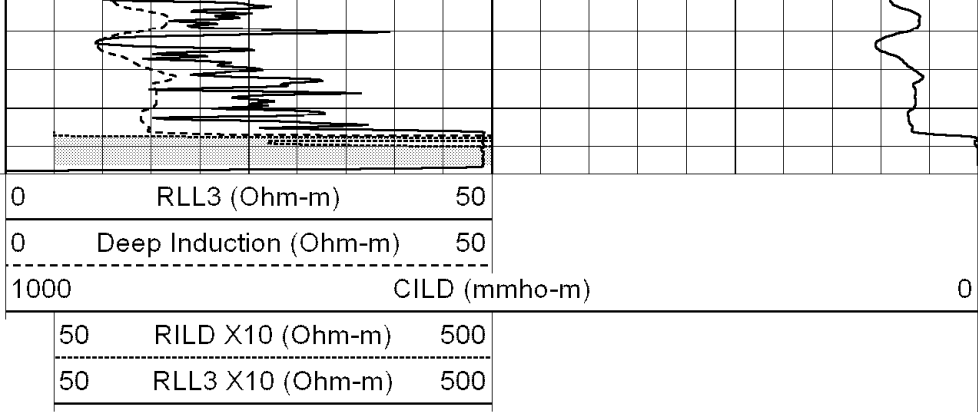
3150







3750



0	Gamma Ray (GAPI)	150
-100	SP (mV)	100

0	RLL3 (Ohm-m)	50
0	Deep Induction (Ohm-m)	50
1000	CILD (mmho-m)	0
50	RILD X10 (Ohm-m)	500
50	RLL3 X10 (Ohm-m)	500



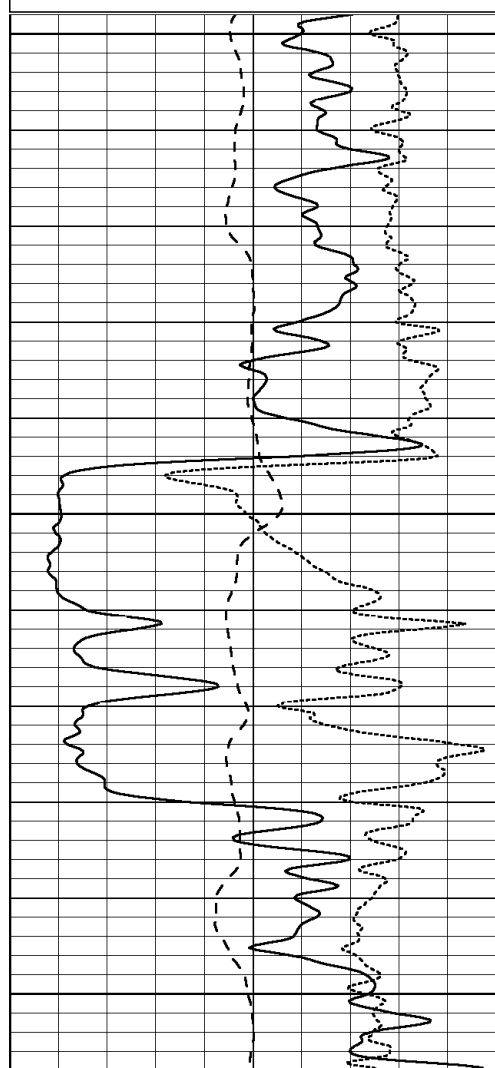
SUPERIOR  
Hays,  
Kansas

# MAIN SECTION

Database File: 003244ddn.db  
 Dataset Pathname: pass6.A  
 Presentation Format: dil  
 Dataset Creation: Fri Apr 17 22:54:31 2009  
 Charted by: Depth in Feet scaled 1:240

0	GAMMA RAY (GAPI)	150
-100	SP (mV)	100
-250	RxoRt	50

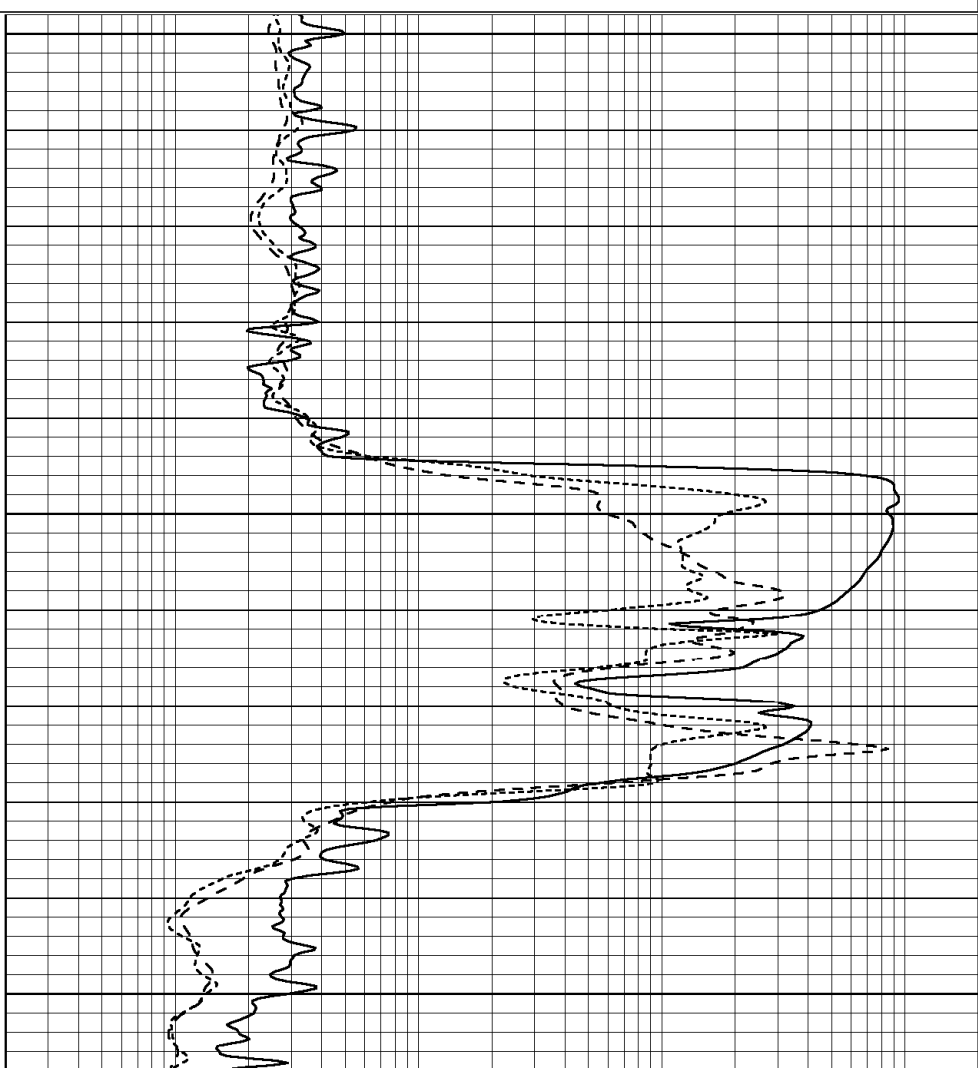
0.2	SHALLOW GUARD (Ohm-m)	2000
0.2	MEDIUM INDUCTION (Ohm-m)	2000
0.2	DEEP INDUCTION (Ohm-m)	2000

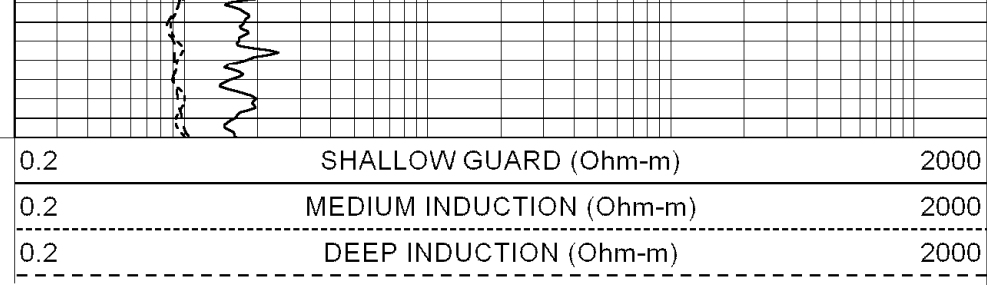
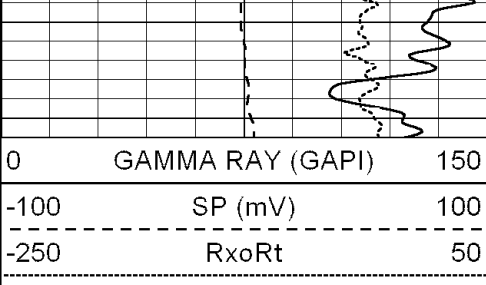


850

900

950

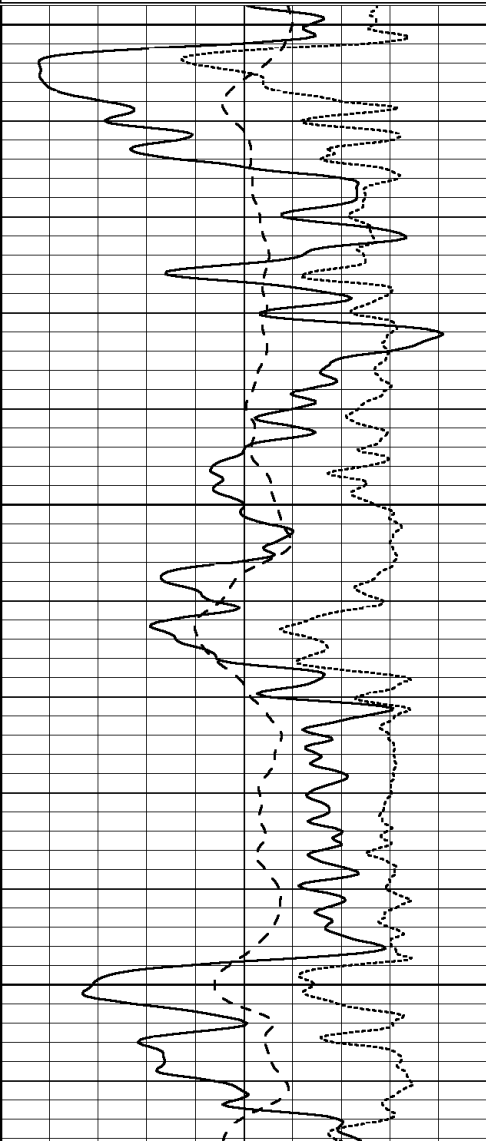
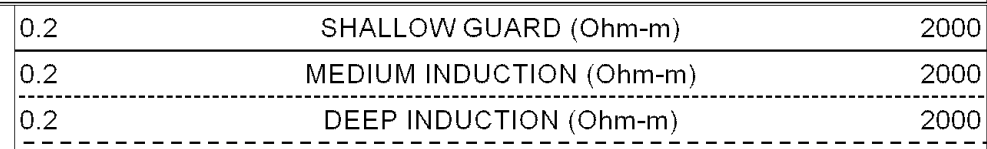
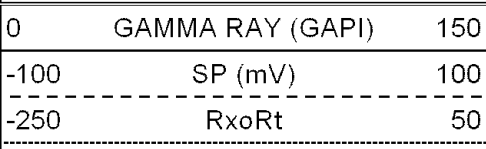




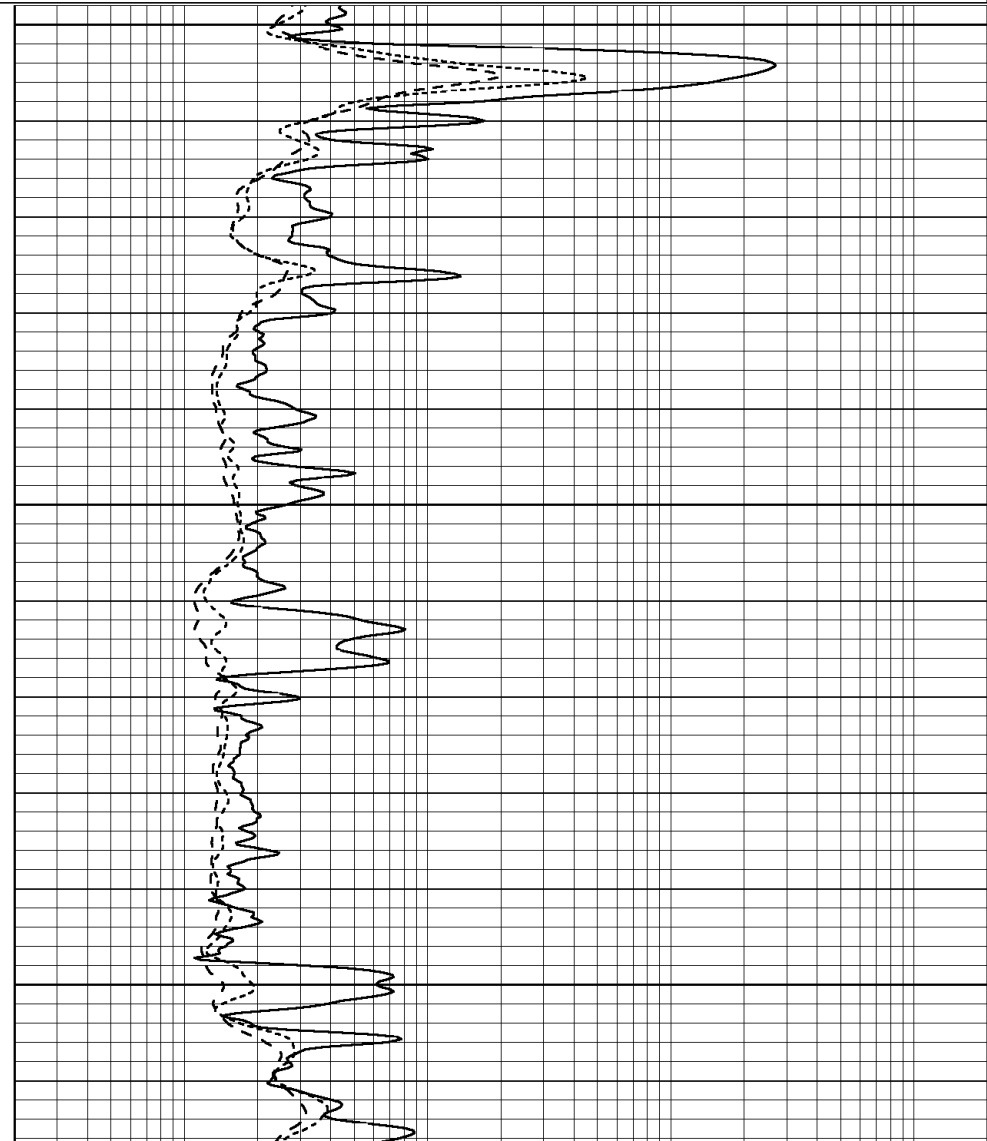
SUPERIOR  
Hays,  
Kansas

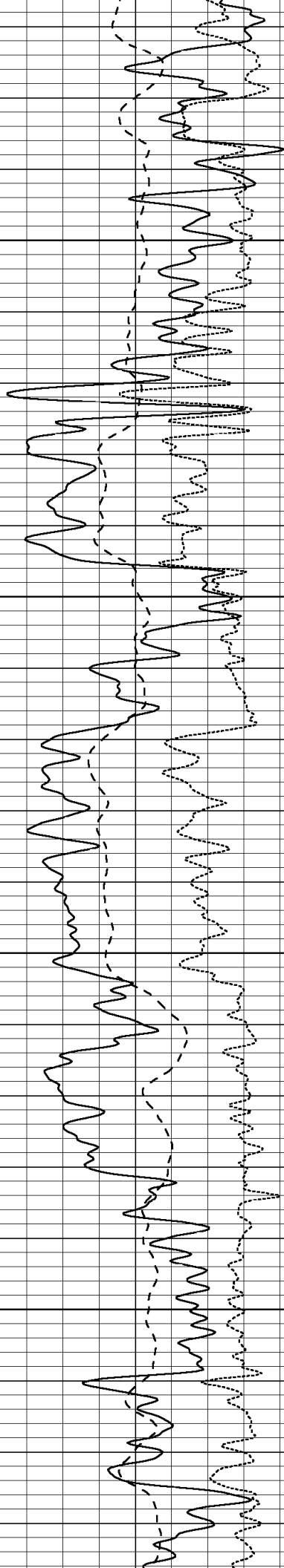
# MAIN SECTION

Database File: 003244ddn.db  
 Dataset Pathname: pass6.A  
 Presentation Format: dil  
 Dataset Creation: Fri Apr 17 22:54:31 2009  
 Charted by: Depth in Feet scaled 1:240



1500  
  
1550  
  
1600



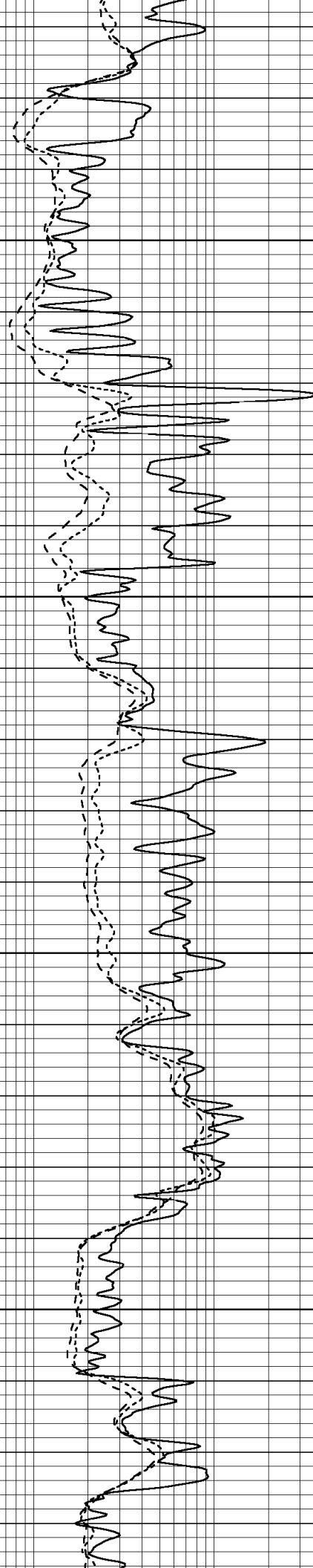


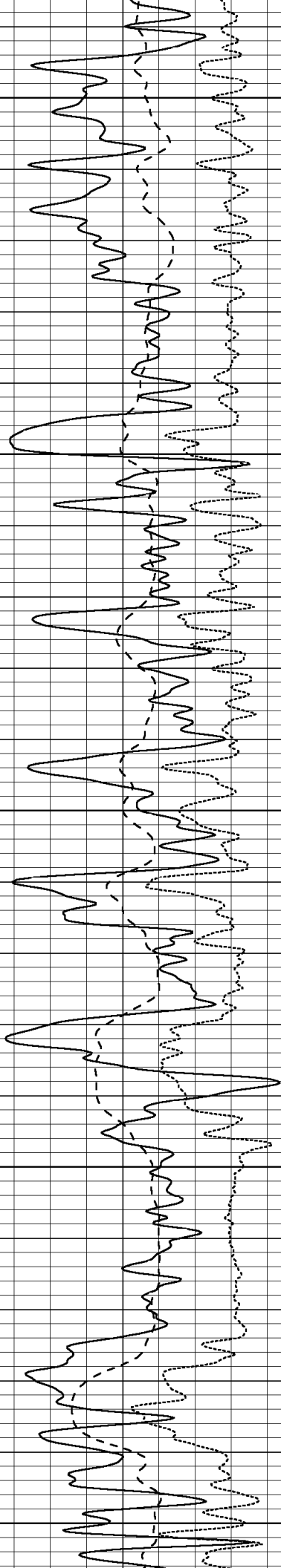
1650

1700

1750

1800





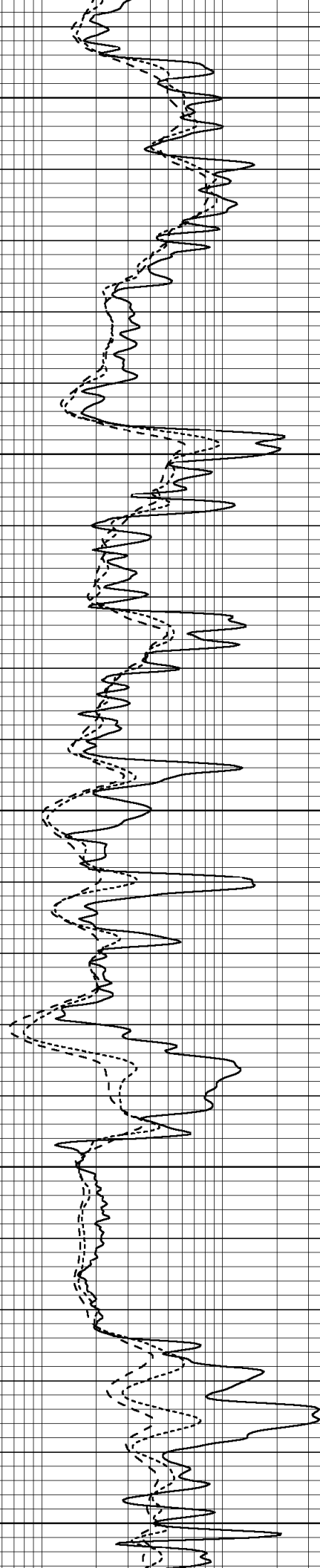
1850

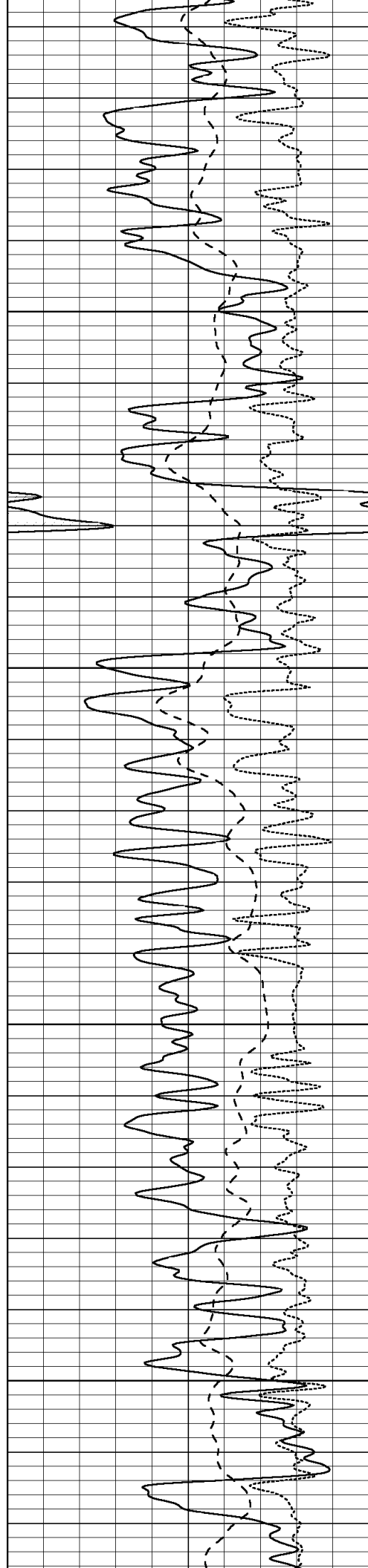
1900

1950

2000

2050



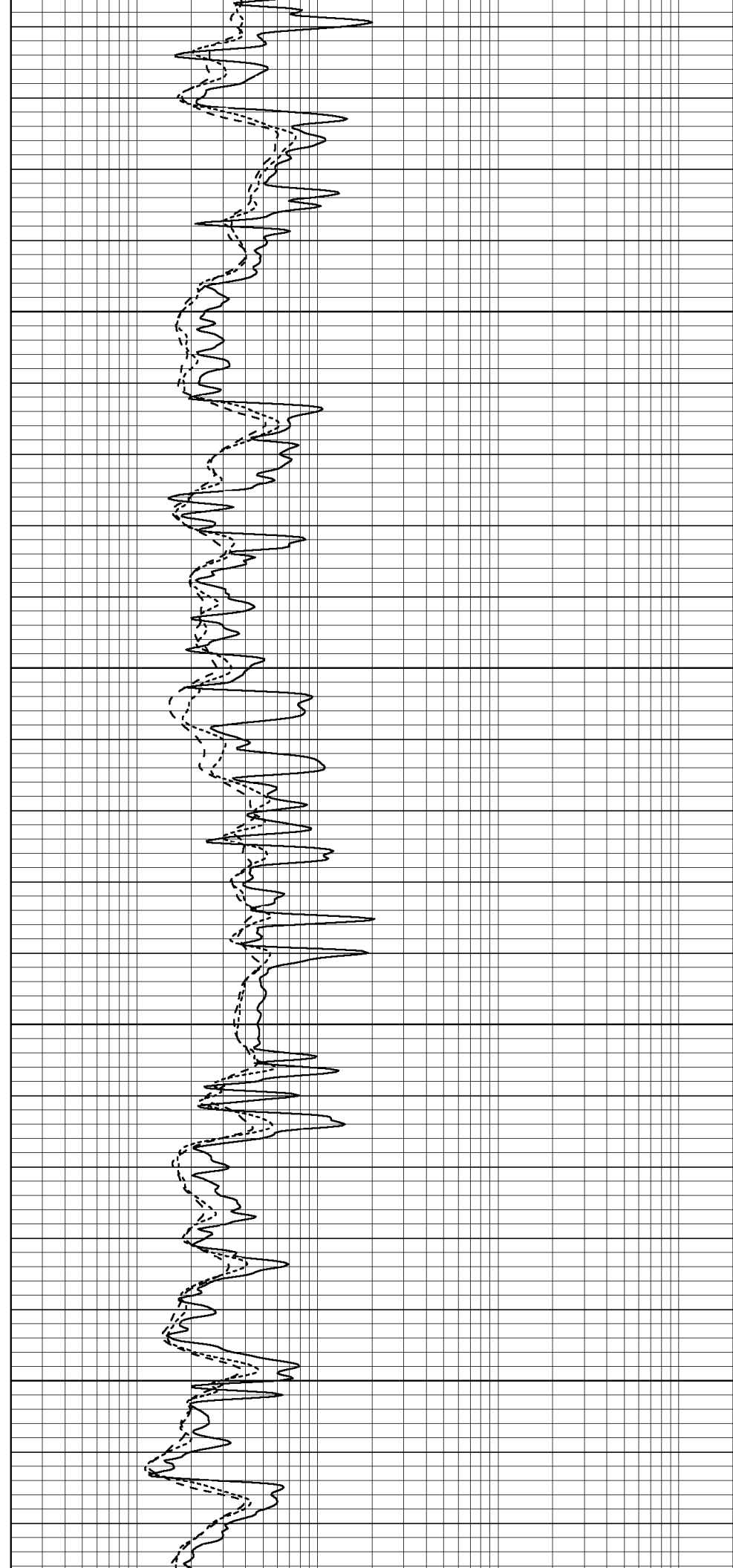


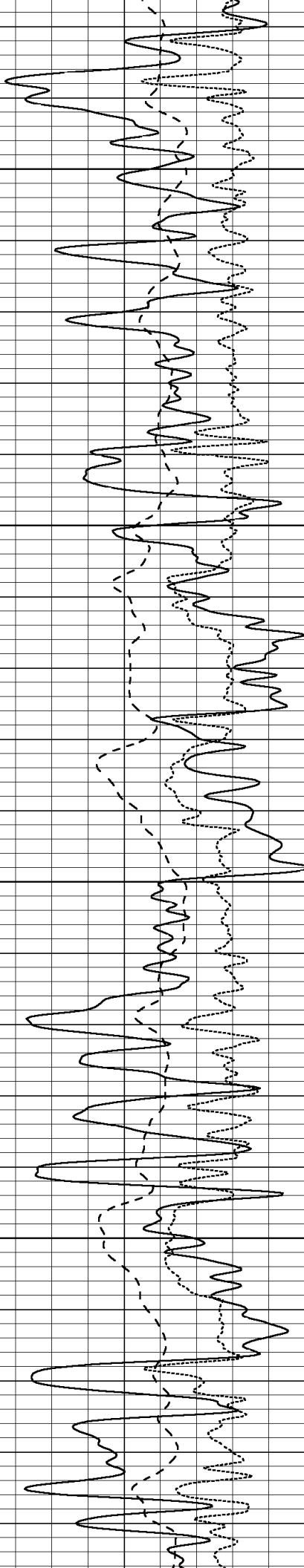
2100

2150

2200

2250



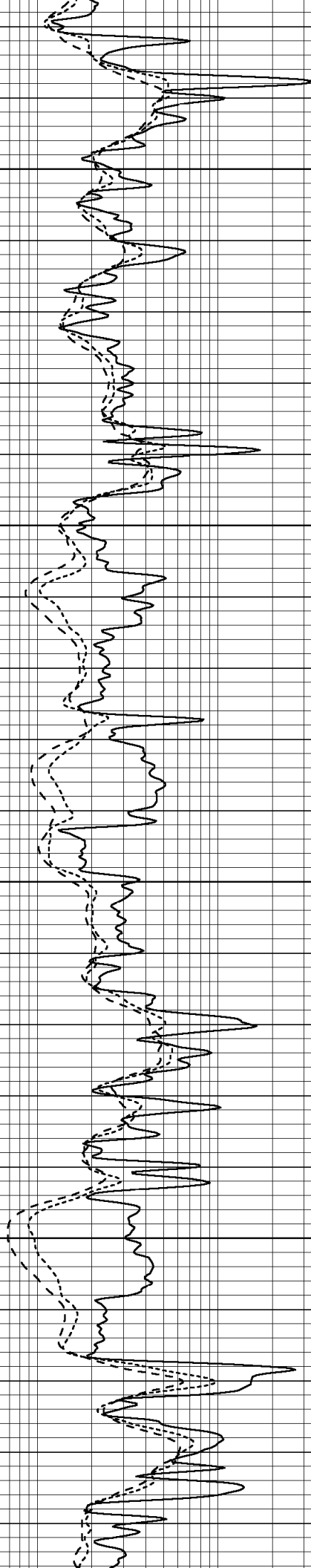


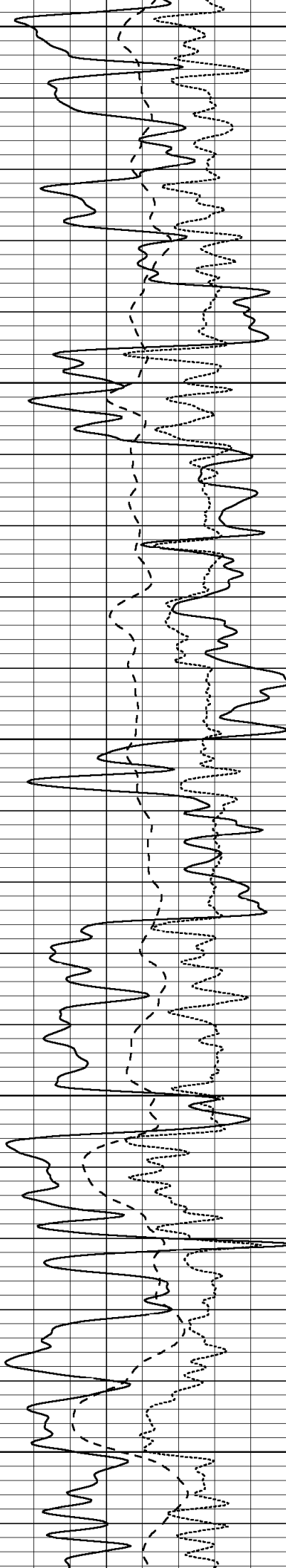
2300

2350

2400

2450





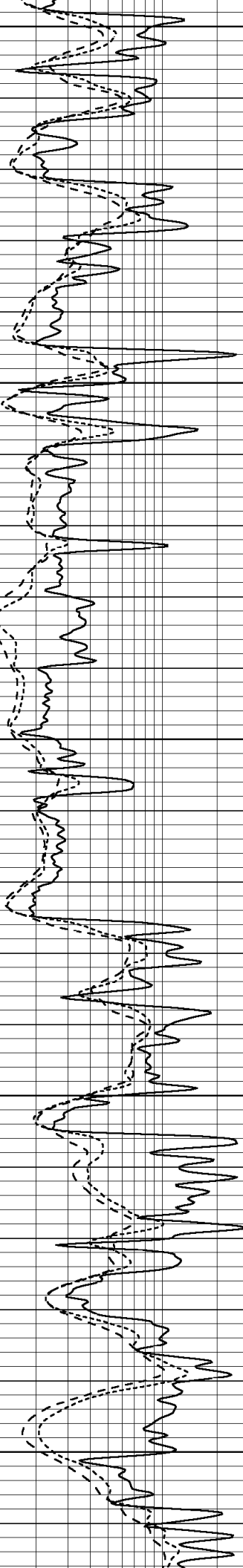
2500

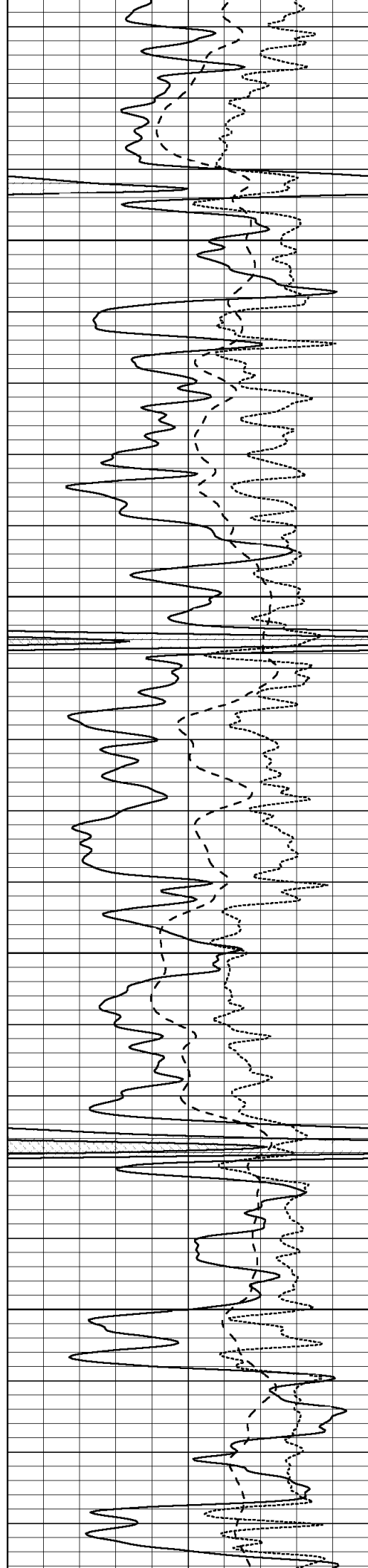
2550

2600

2650

2700



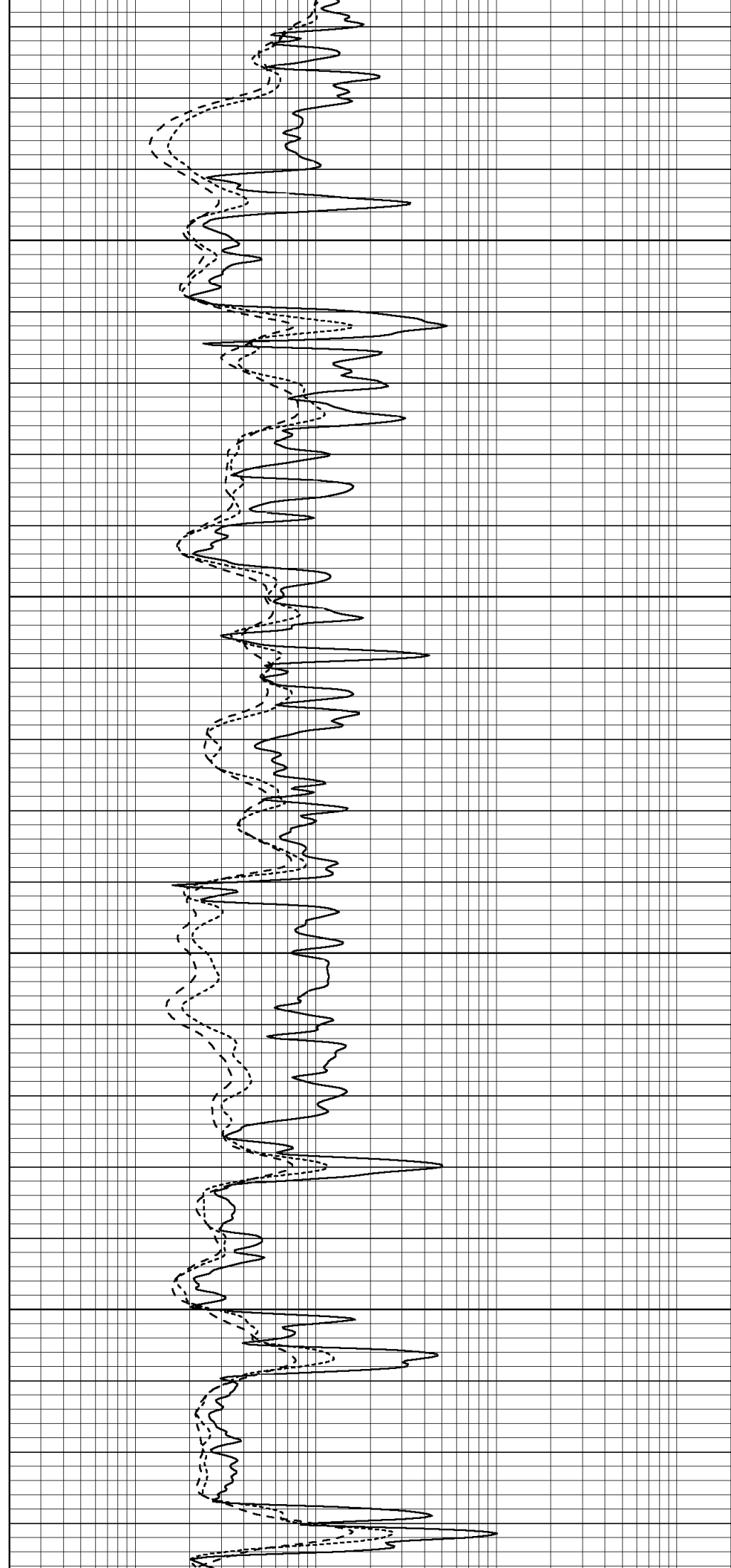


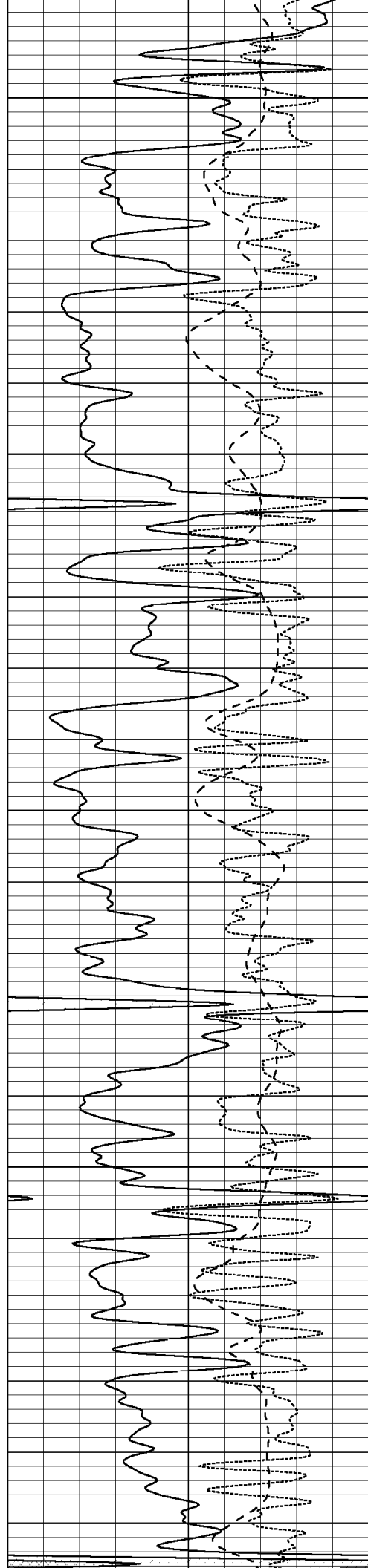
2750

2800

2850

2900





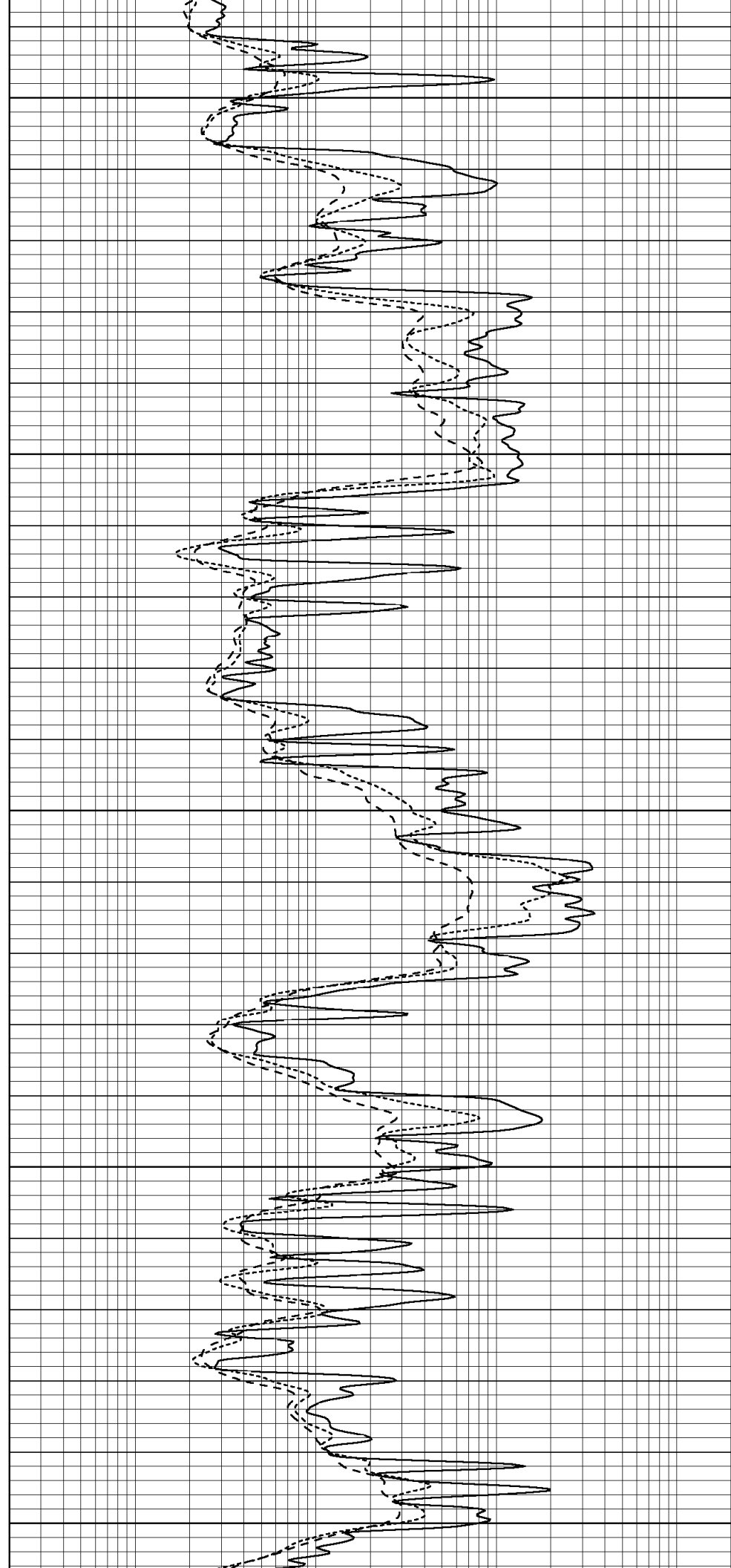
2950

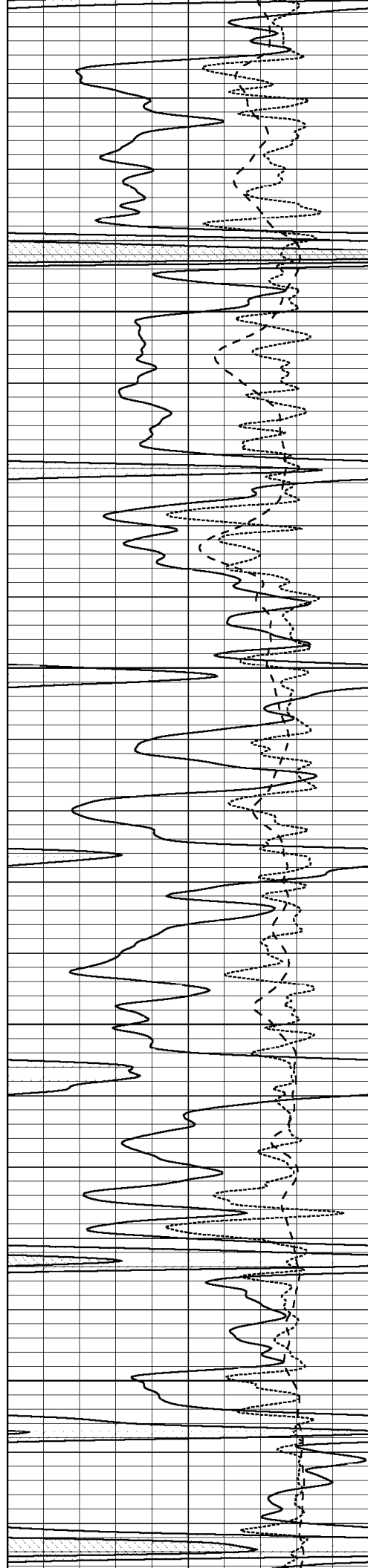
3000

3050

3100

3150



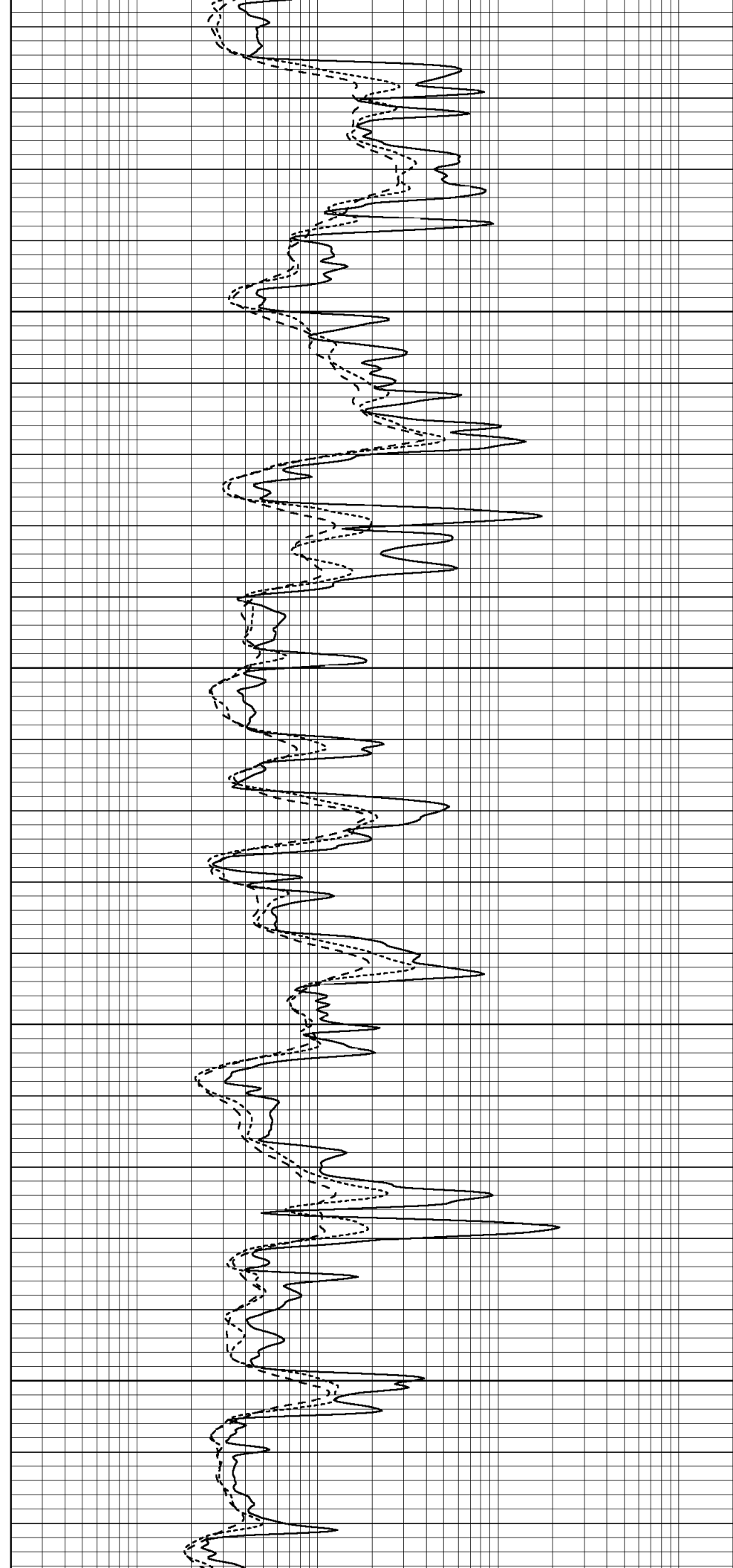


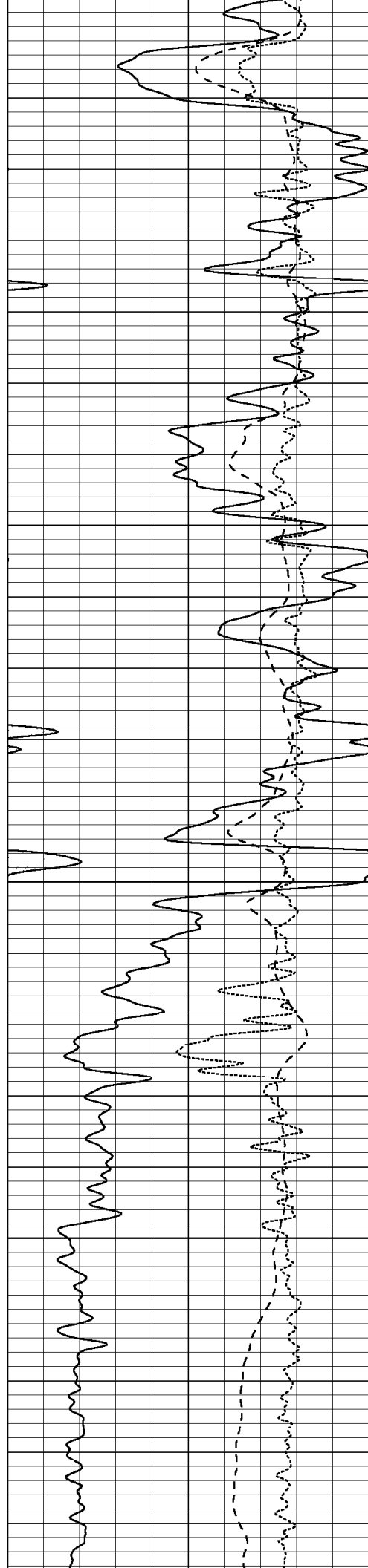
3200

3250

3300

3350



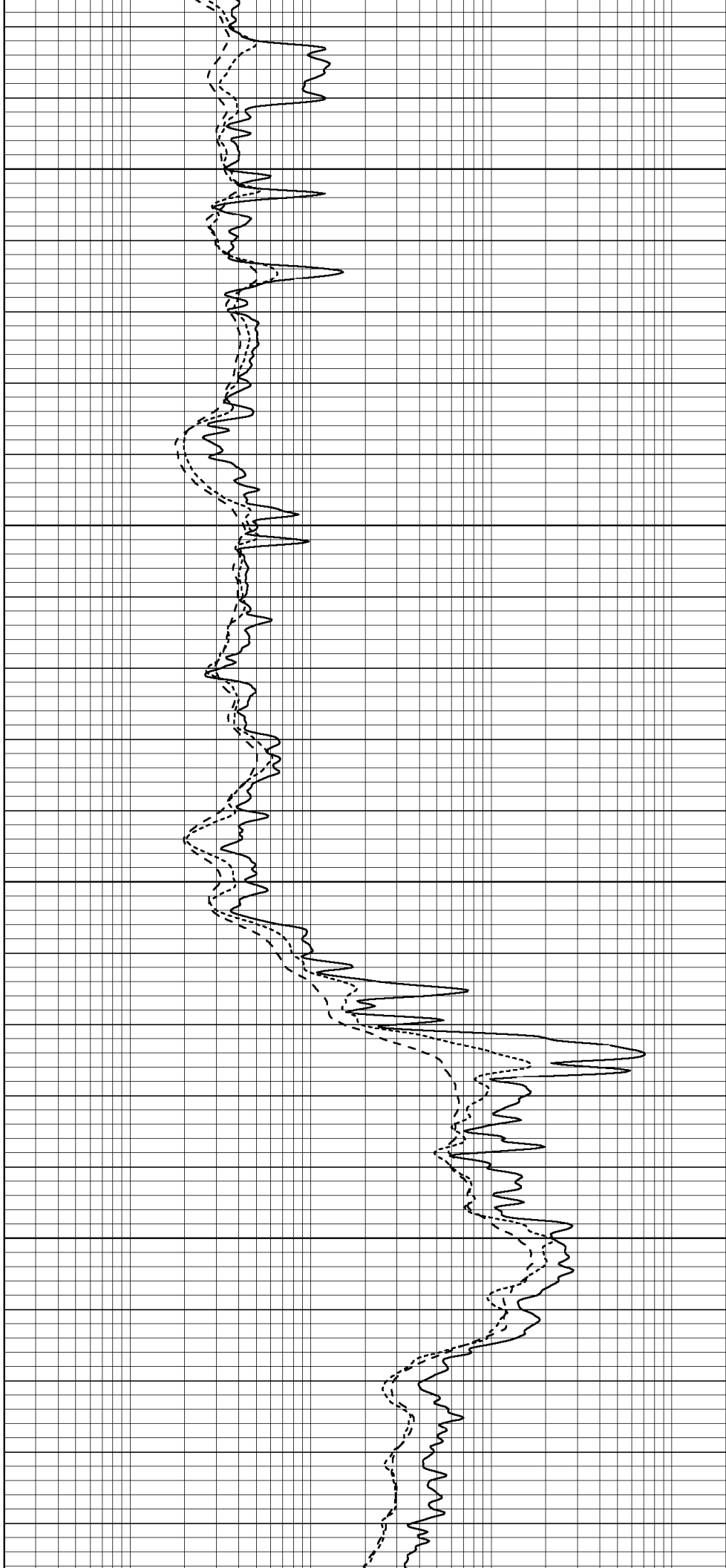


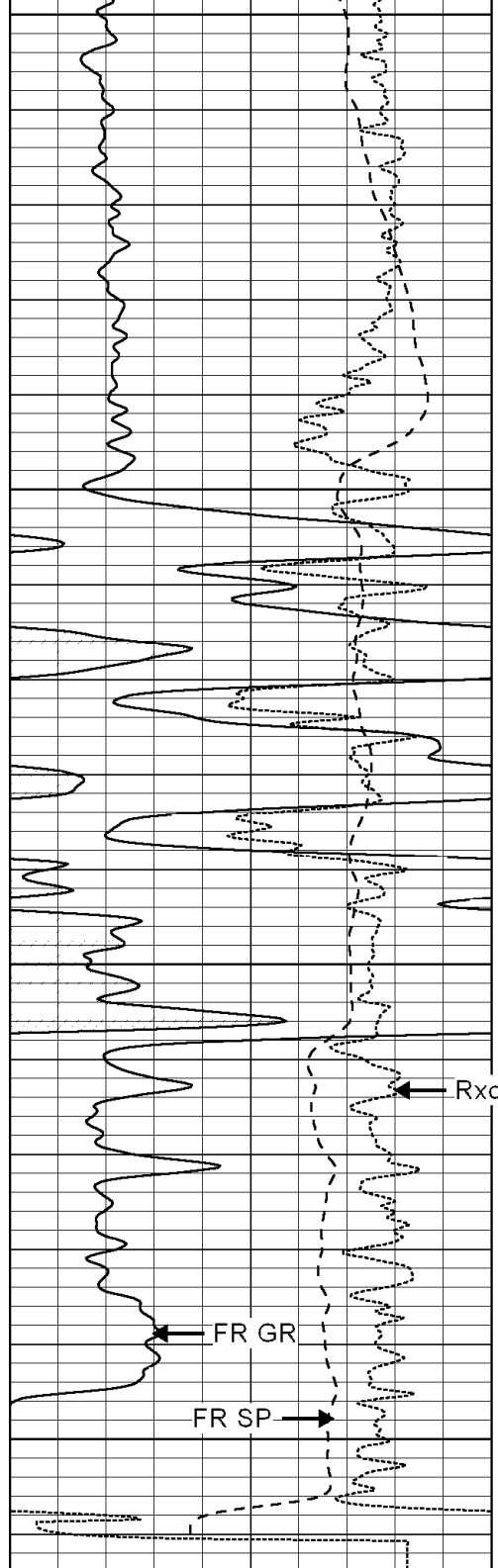
3400

3450

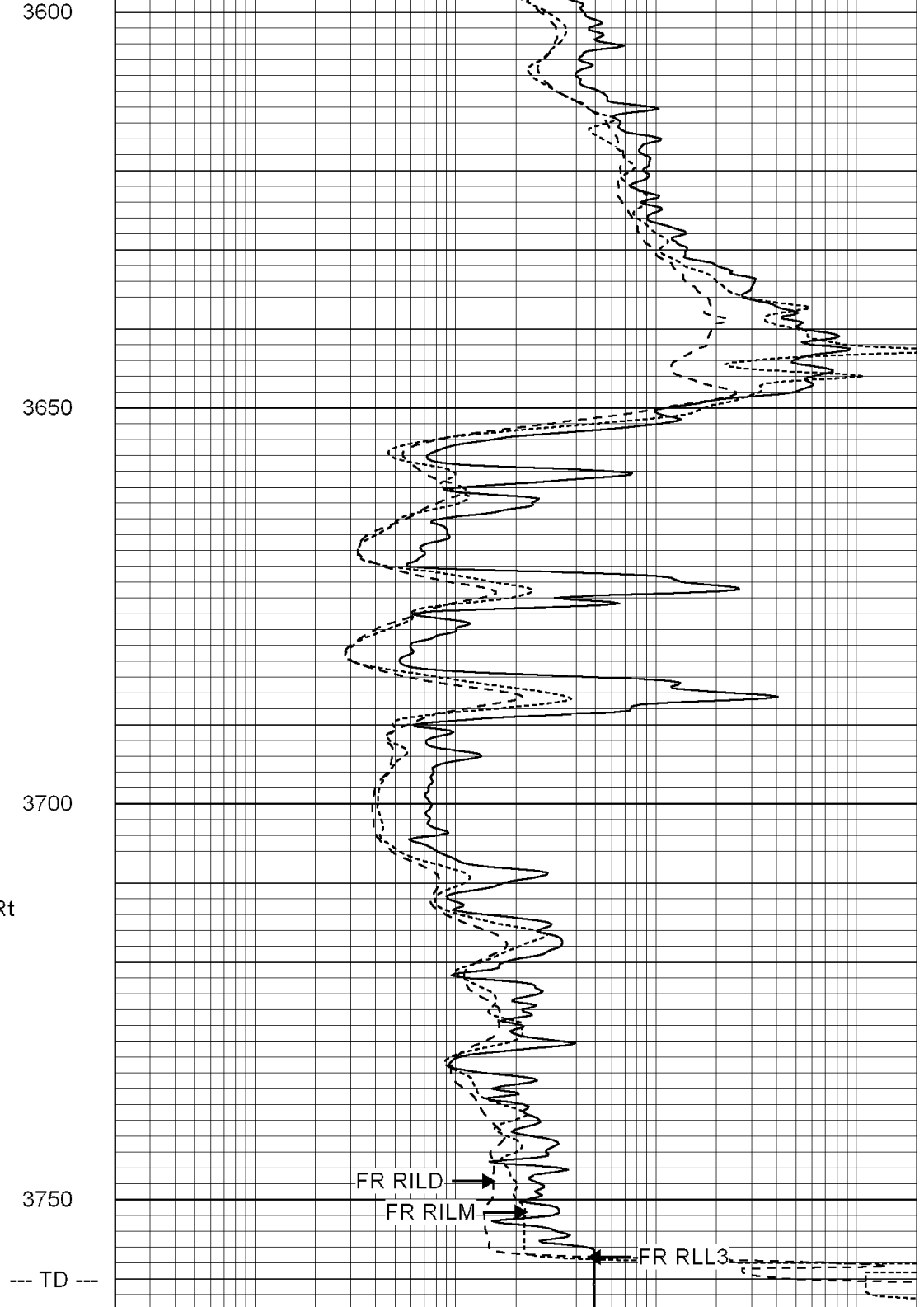
3500

3550





0	GAMMA RAY (GAPI)	150
-100	SP (mV)	100
-250	RxoRt	50



0.2	SHALLOW GUARD (Ohm-m)	2000
0.2	MEDIUM INDUCTION (Ohm-m)	2000
0.2	DEEP INDUCTION (Ohm-m)	2000



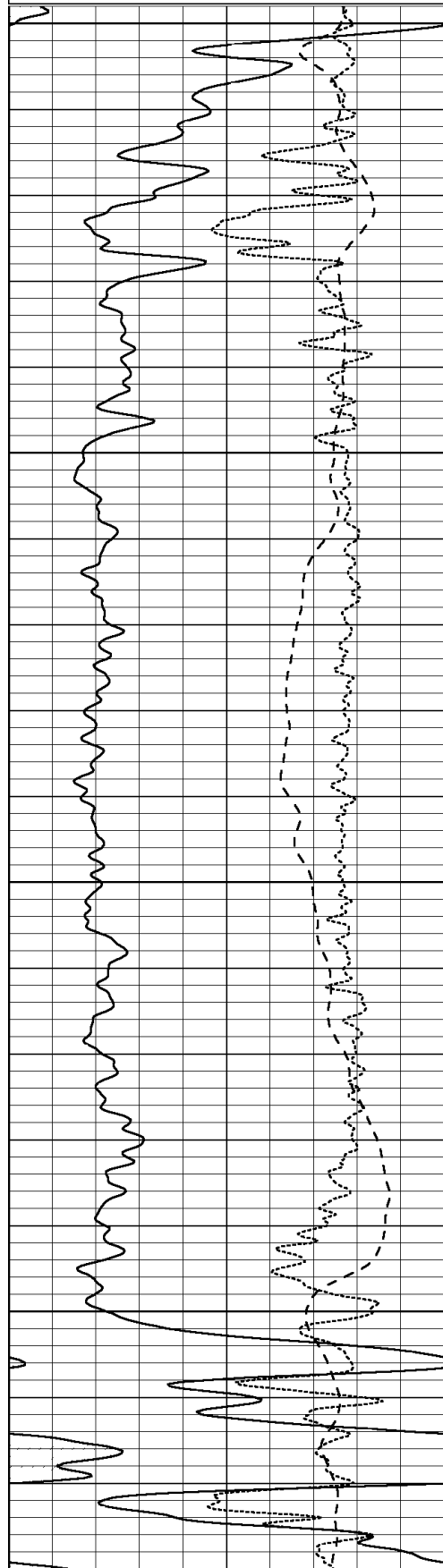
SUPERIOR  
Hays,  
Kansas

# REPEAT SECTION

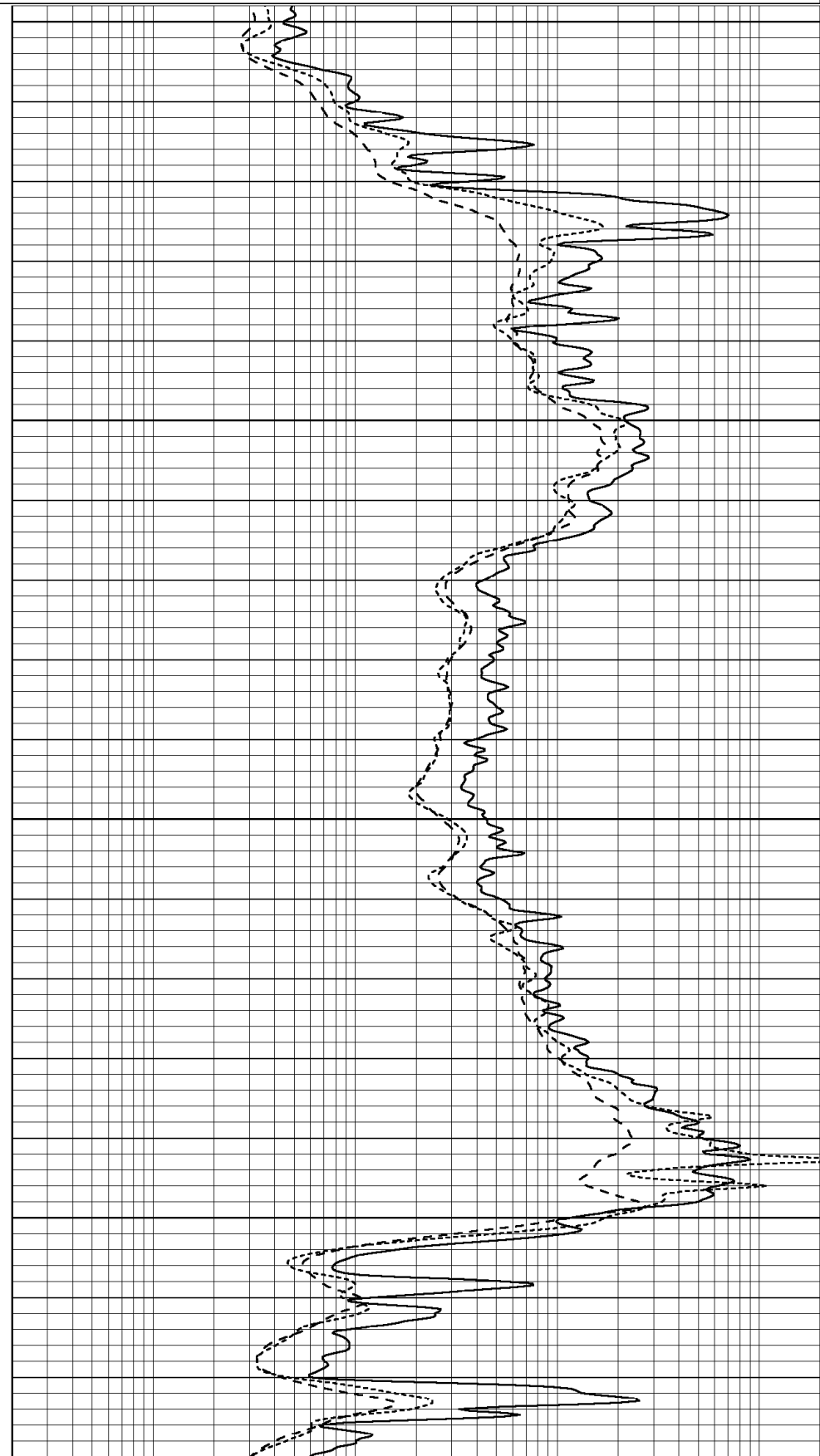
Database File: 003244ddn.db  
 Dataset Pathname: pass5A  
 Presentation Format: dil  
 Dataset Creation: Fri Apr 17 21:56:22 2009 by Calc Open-Cased 051020  
 Charted by: Depth in Feet scaled 1:240

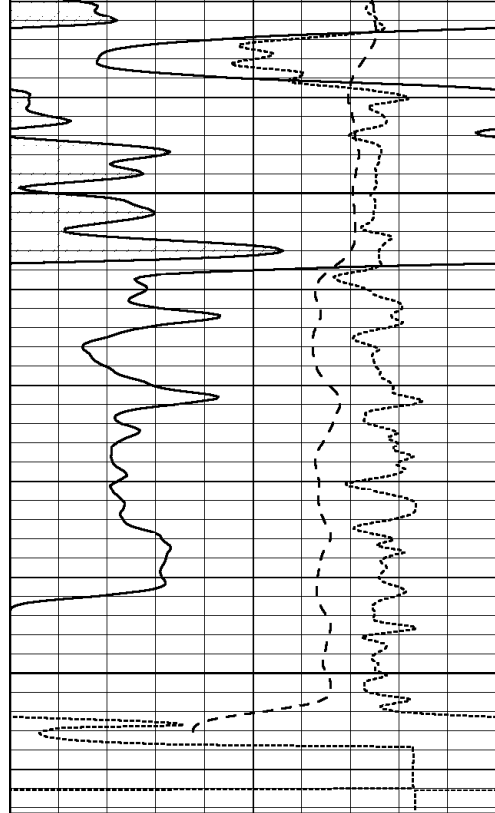
0	GAMMA RAY (GAPI)	150
-100	SP (mV)	100
-250	RxoRt	50

0.2	SHALLOW GUARD (Ohm-m)	2000
0.2	MEDIUM INDUCTION (Ohm-m)	2000
0.2	DEEP INDUCTION (Ohm-m)	2000



3500  
 3550  
 3600  
 3650

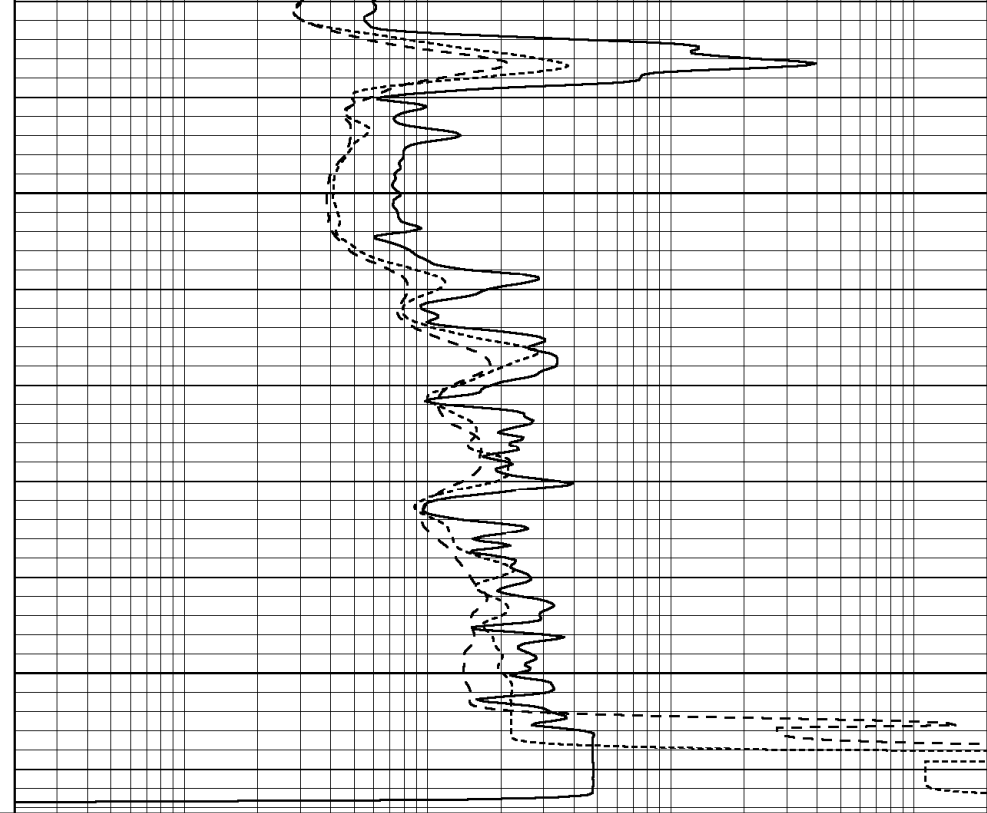




3700

3750

0	GAMMA RAY (GAPI)	150
-100	SP (mV)	100
-250	RxoRt	50



0.2	SHALLOW GUARD (Ohm-m)	2000
0.2	MEDIUM INDUCTION (Ohm-m)	2000
0.2	DEEP INDUCTION (Ohm-m)	2000