



SUPERIOR
Hays,
Kansas

COMPENSATED
DENSITY/NEUTRON
LOG

Company: TRANSPACIFIC OIL CORP.
 Well: BROWN "A" #1-3
 Field: WILDCAT
 County: RUSSELL
 State: KANSAS

Company: TRANSPACIFIC OIL CORPORATION
 Well: BROWN "A" #1-3
 Field: WILDCAT
 County: RUSSELL
 State: KANSAS

Location: API #: 15-167-23566-0000
 1908FSL & 1439FWL
 C-N/2-SW
 SEC 3 TWP 11S RGE 13W
 Permanent Datum: GROUND LEVEL Elevation: 1721
 Log Measured From: KELLY BUSHING 8' A.G.L.
 Drilling Measured From: KELLY BUSHING
 Other Services: DIL MEL/SONIC
 Elevation: K.B. 1729 D.F. 1727 G.L. 1721

Date	04/08/2009		
Run Number	ONE		
Depth Driller	3625		
Depth Logger	3626		
Bottom Logged Interval	3602		
Top Log Interval	2000		
Casing Driller	8 5/8 @ 436'		
Casing Logger	437'		
Bit Size	7 7/8		
Type Fluid In Hole	CHEMICAL MUD		
Density / Viscosity	9.3 / 55	CHLORIDES 6,400	
pH / Fluid Loss	10.0 / 9.8		
Source of Sample	FLOWLINE		
Rm @ Meas. Temp	0.75 @ 86F		
Rmf @ Meas. Temp	0.56 @ 86F		
Rmc @ Meas. Temp	0.90 @ 86F		
Source of Rmf / Rmc	CAL/CAL		
Rm @ BHT	0.57 @ 113F		
Time Circulation Stopped	2 HOURS		
Time Logger on Bottom	2:45 PM		
Maximum Recorded Temperature	113F		
Equipment Number	680		
Location	HAYS, KS		
Recorded By	JEFF GRONEWEG	JOE CRATHORNE	
Witnessed By	BETH ISERN		

<<< Fold Here >>>

All interpretations are opinions based on inferences from electrical or other measurements and we cannot and do not guarantee the accuracy or correctness of any interpretation, and we shall not, except in the case of gross or willful negligence on our part, be liable or responsible for any loss, costs, damages, or expenses incurred or sustained by anyone resulting from any interpretation made by any of our officers, agents or employees. These interpretations are also subject to our general terms and conditions set out in our current Price Schedule.

Comments

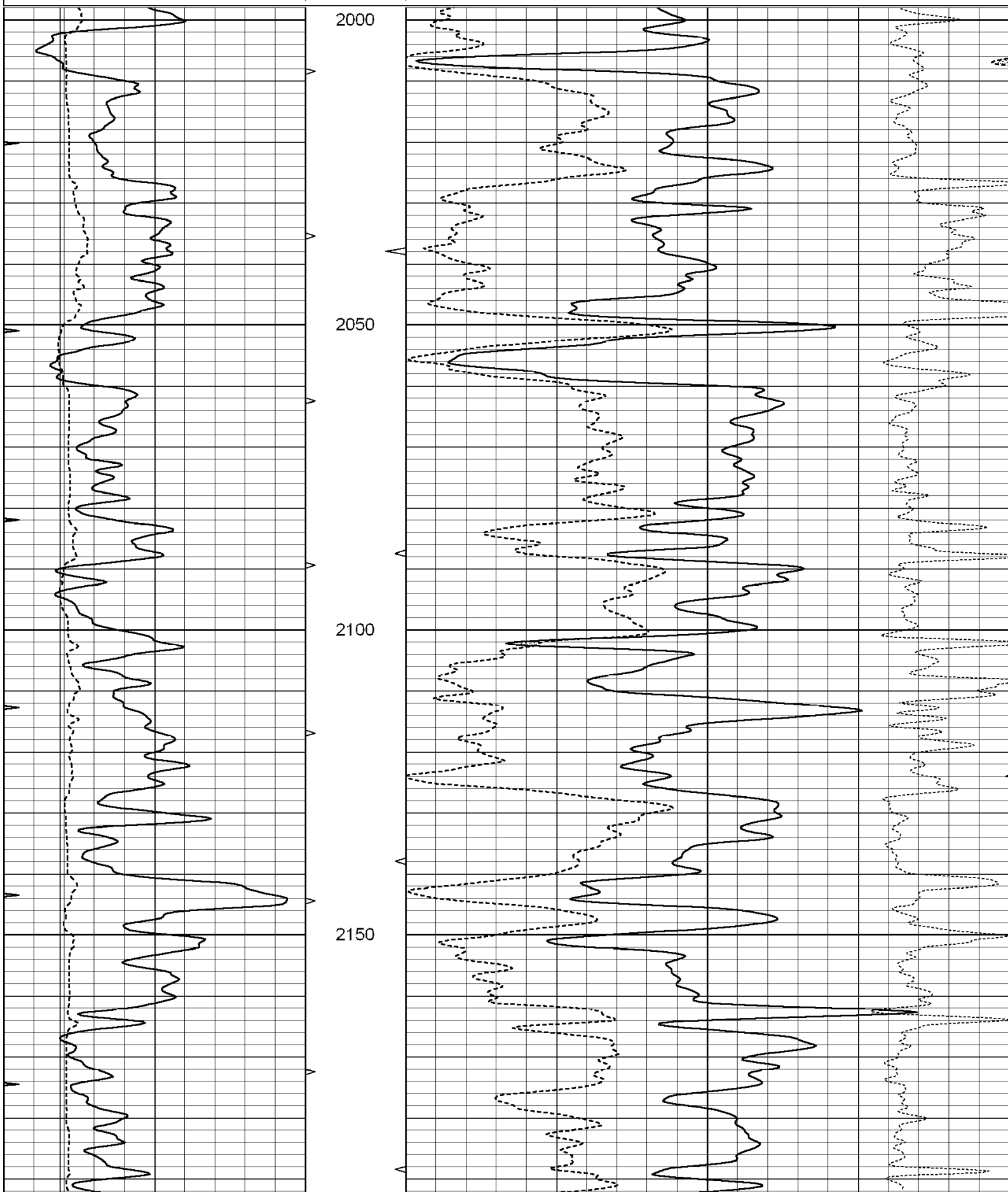
THANK YOU FOR USING SUPERIOR WELL SERVICES
 HAYS, KS. 785-628-6395

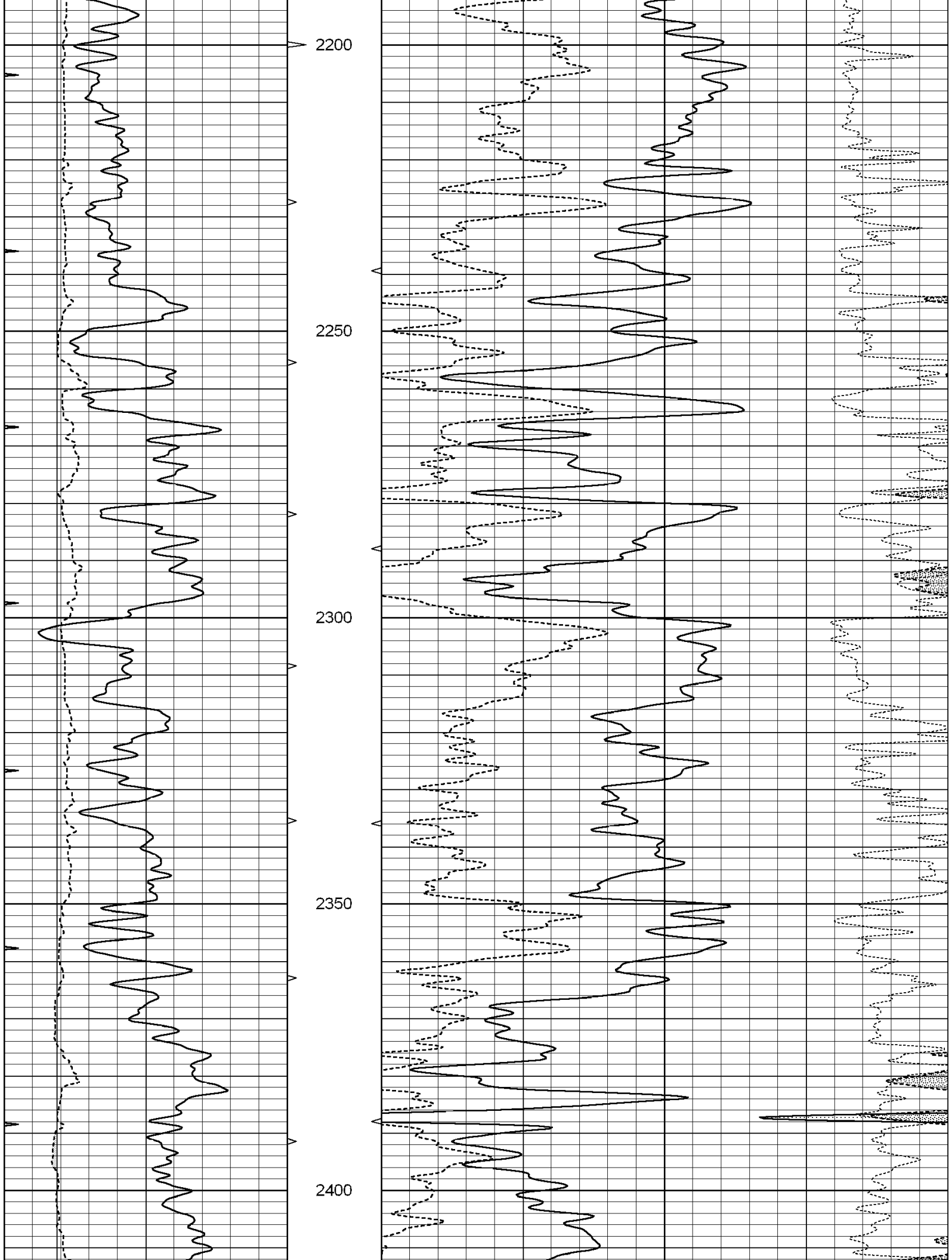
DIRECTIONS: WALDO; 2 MILES EAST, 1/2 MILE NORTH, EAST INTO

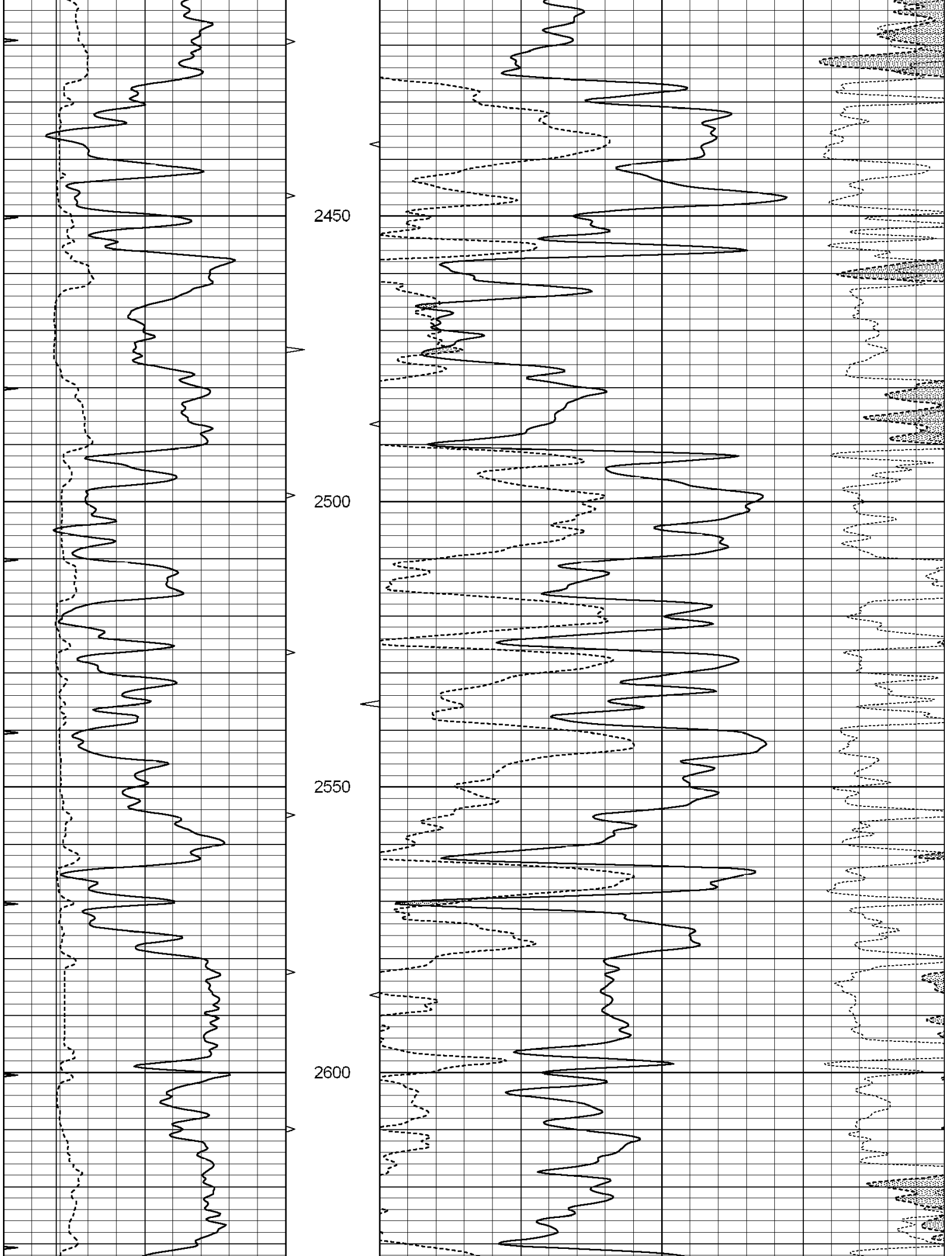
Charted by:

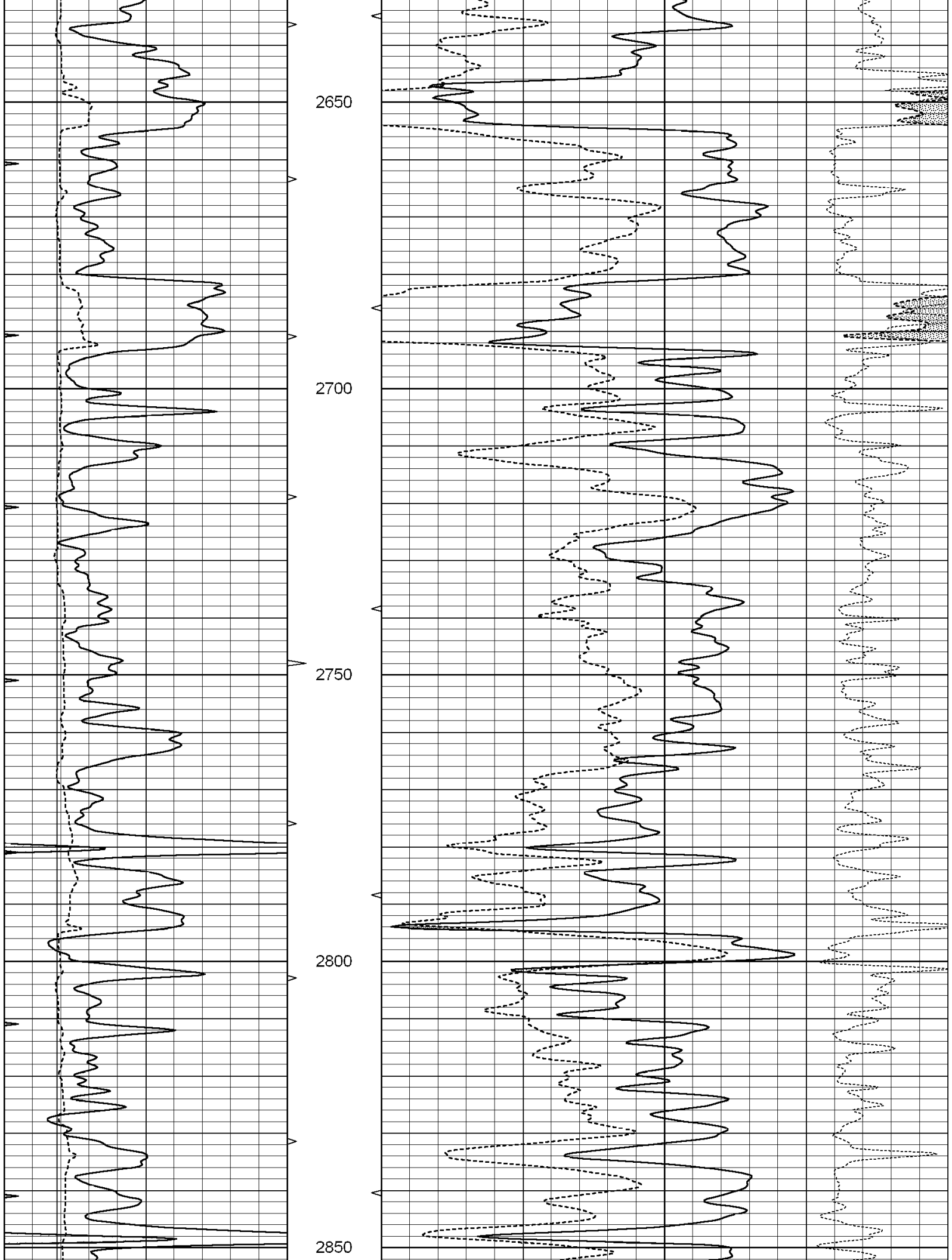
Depth in Feet scaled 1:240

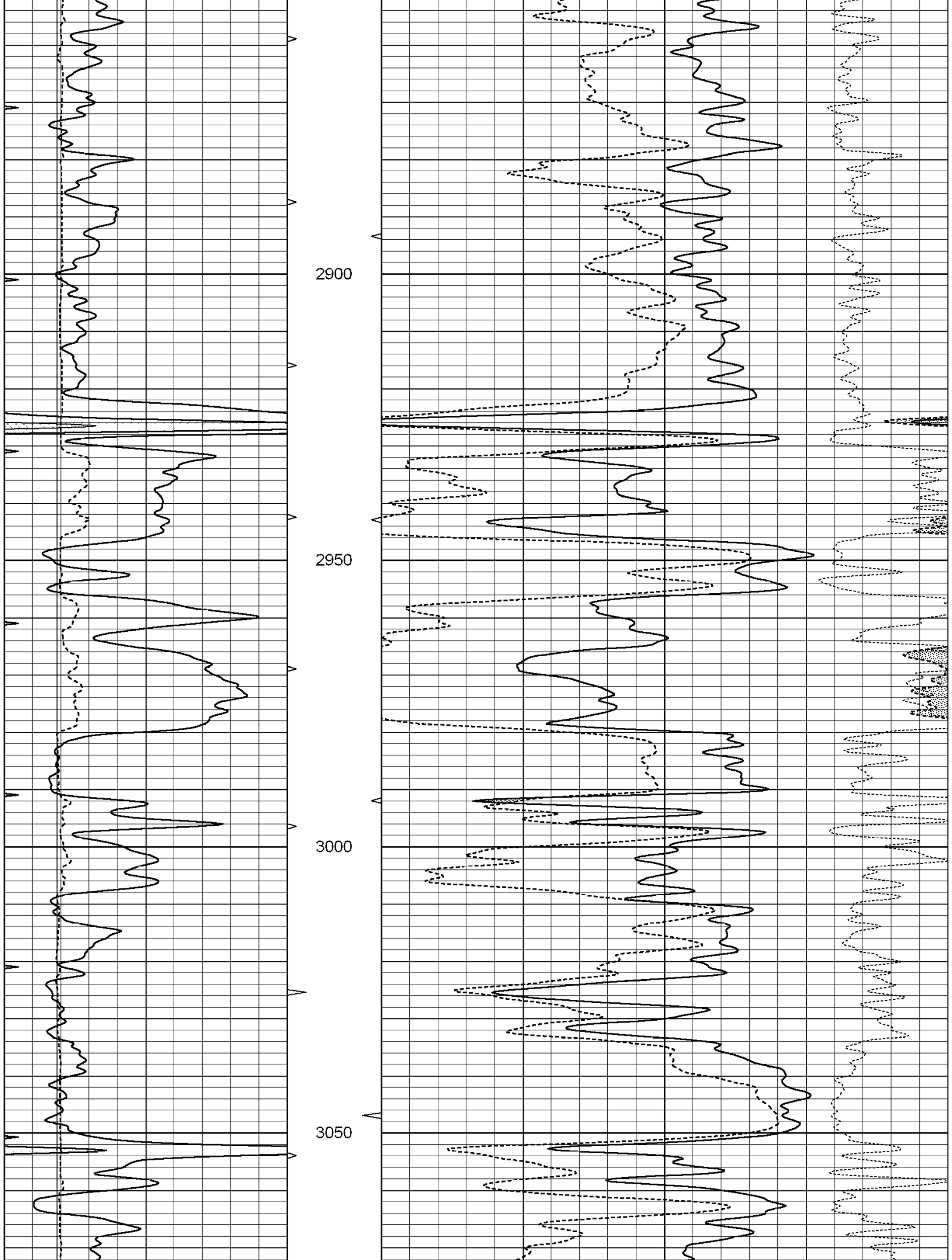
0	GAMMA RAY (GAPI)	150	ABHV	30	COMPENSATED DENSITY (pu)	-10
6	CALIPER (in)	16	10 (ft3) 0	30	COMPENSATED NEUTRON (pu)	-10
0	MINMK	20	TBHV		-0.25 CORRECTION (g/cc)	0.25
			0 (ft3) 10			

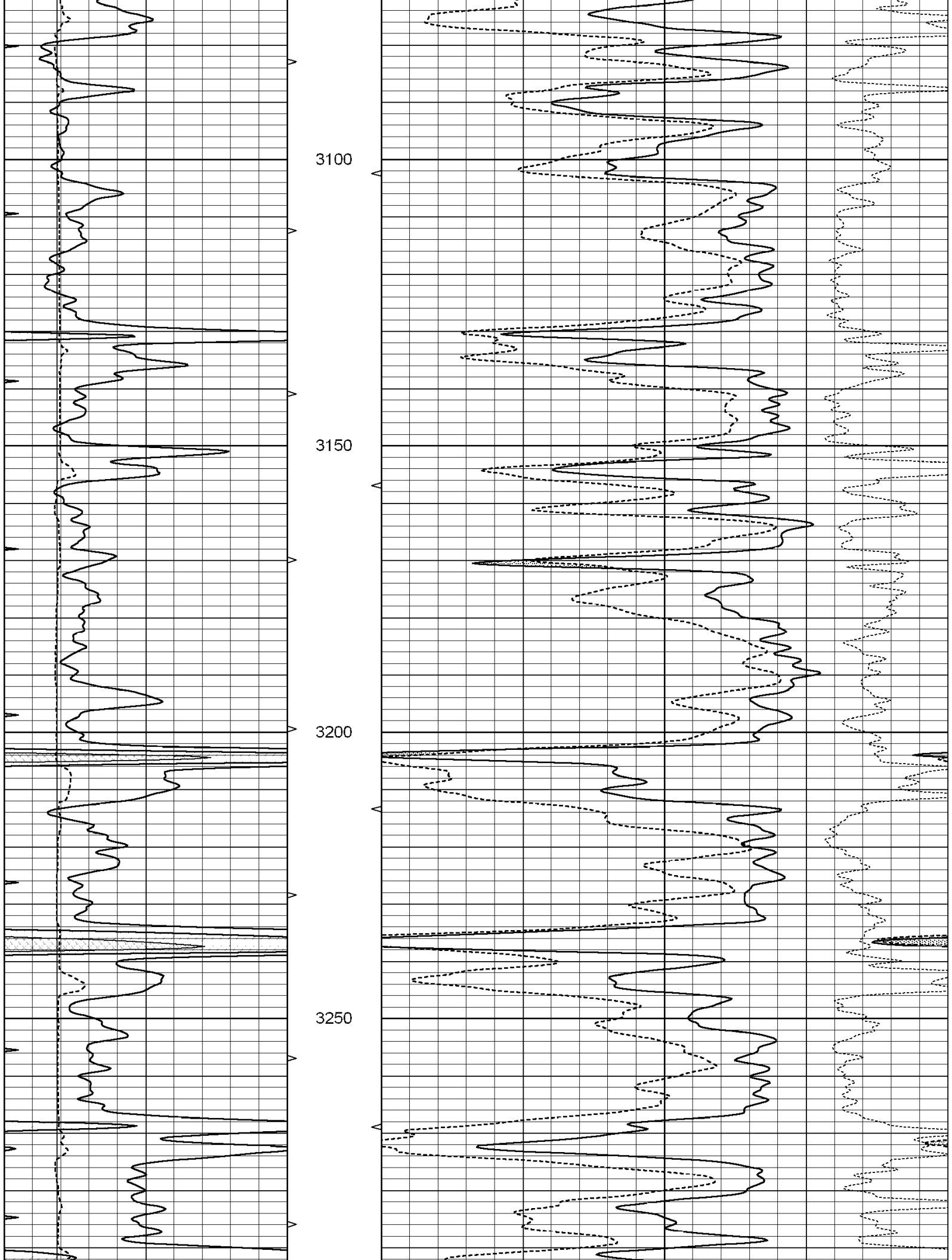


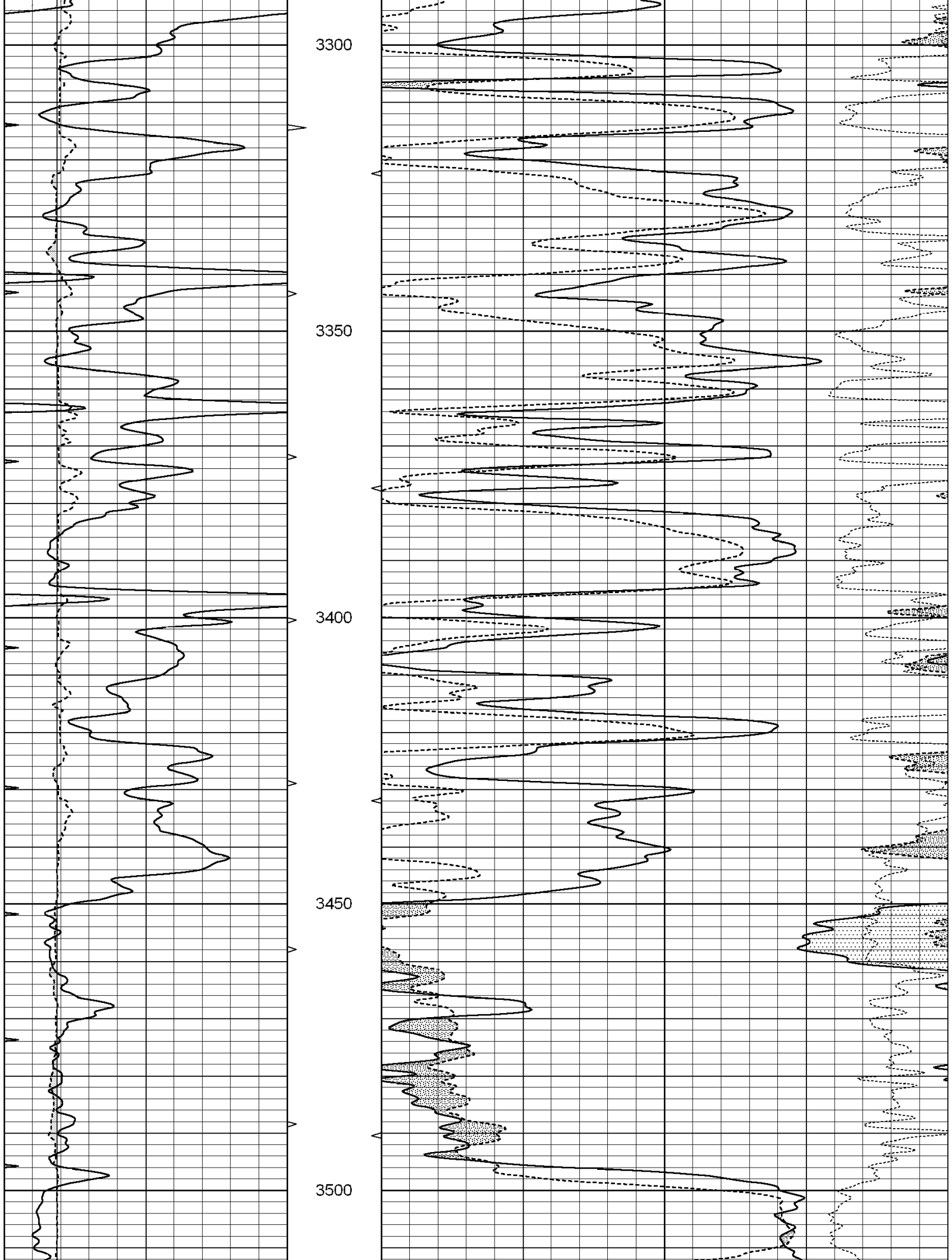


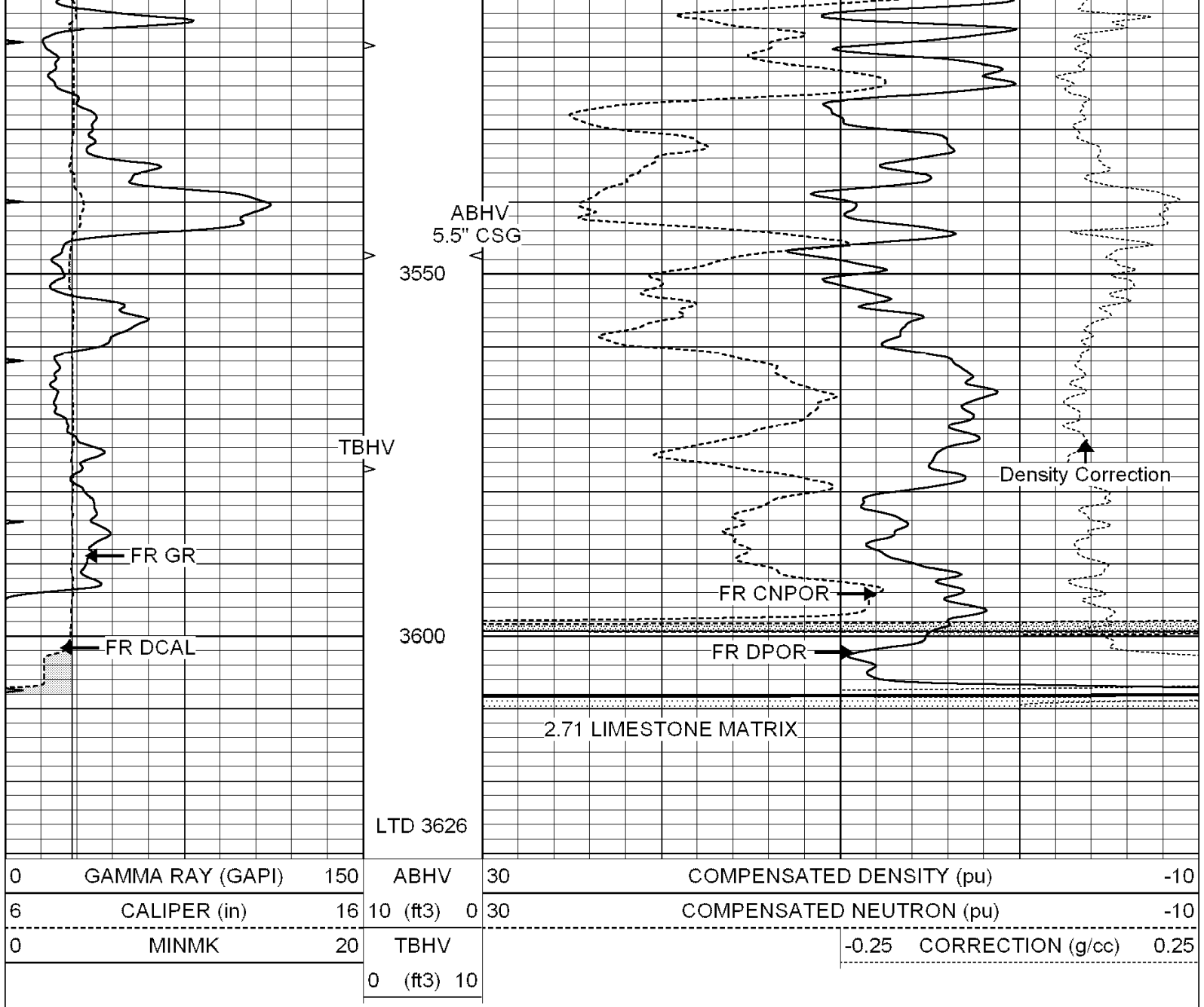










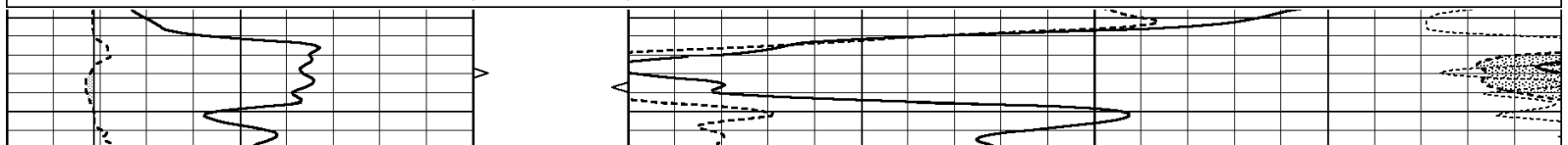


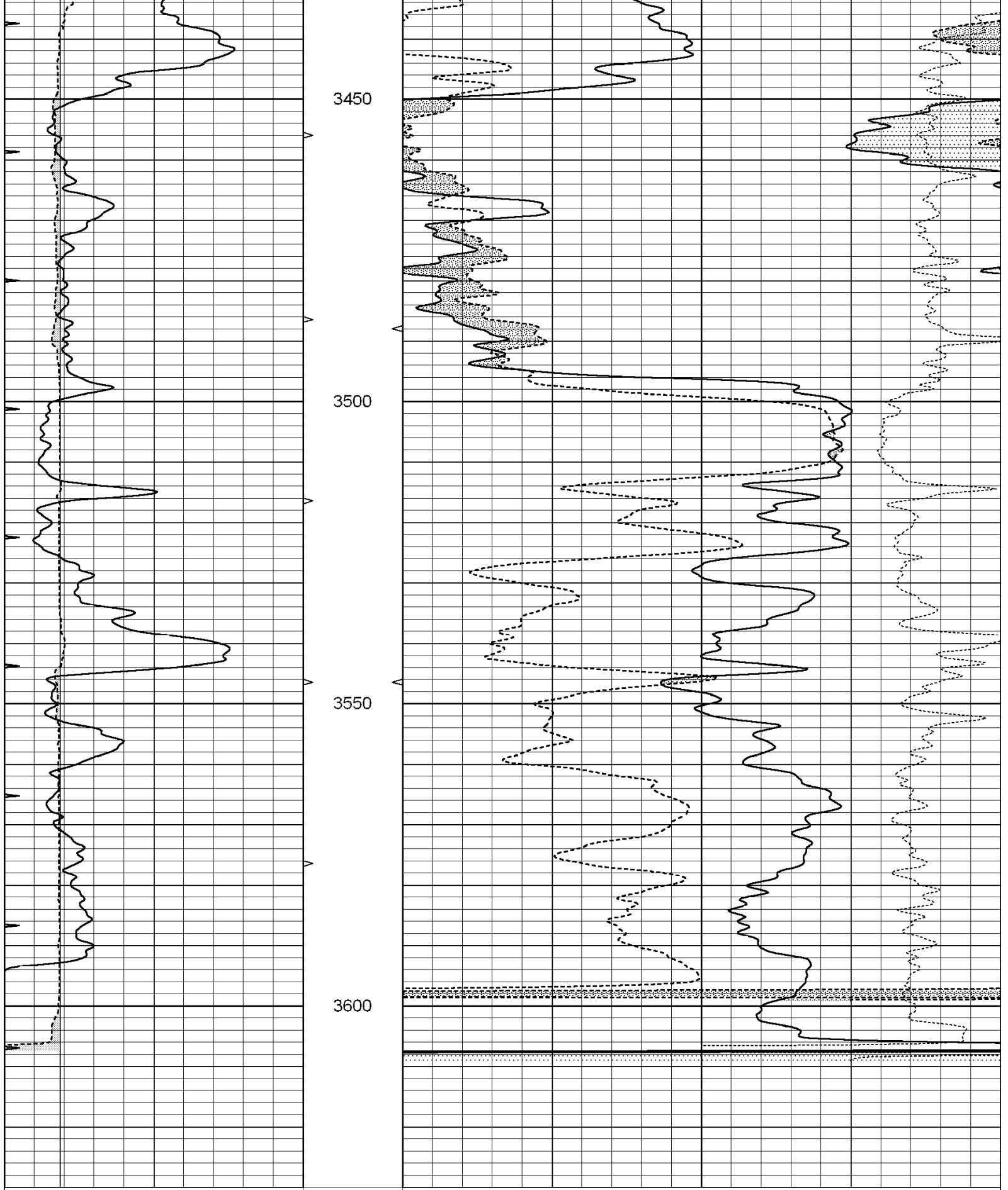
SUPERIOR
Hays,
Kansas

REPEAT SECTION

Database File: 003705ddn.db
 Dataset Pathname: pass2.2
 Presentation Format: _den_neu
 Dataset Creation: Wed Apr 08 16:28:22 2009 by Calc Open-Cased 070814
 Charted by: Depth in Feet scaled 1:240

0	GAMMA RAY (GAPI)	150	ABHV	30	COMPENSATED DENSITY (pu)	-10
6	CALIPER (in)	16	10 (ft3)	0 30	COMPENSATED NEUTRON (pu)	-10
0	MINMK	20	TBHV		-0.25 CORRECTION (g/cc)	0.25
			0 (ft3)	10		





0	GAMMA RAY (GAPI)	150	ABHV	30	COMPENSATED DENSITY (pu)	-10
6	CALIPER (in)	16	10 (ft3)	0 30	COMPENSATED NEUTRON (pu)	-10
0	MINMK	20	TBHV		-0.25 CORRECTION (g/cc)	0.25
			0 (ft3)	10		

Calibration Report

Database File: 003705ddn.db
 Dataset Pathname: pass3.4
 Dataset Creation: Wed Apr 08 16:26:44 2009 by Calc Open-Cased 070814

Dual Induction Calibration Report

Serial-Model: PROBE8-DILG
 Surface Cal Performed: Fri Aug 01 06:33:19 2008
 Downhole Cal Performed: Mon Jul 28 11:08:27 2008
 After Survey Verification Performed: Mon Jul 28 11:08:27 2008

Surface Calibration

Loop:	Readings			References			Results	
	Air	Loop		Air	Loop		m	b
Deep	0.015	0.648	V	0.000	400.000	mmho-m	632.616	-9.730
Medium	0.029	0.796	V	0.000	464.000	mmho-m	605.049	-17.680
Internal:	Zero	Cal		Zero	Cal		m	b
Deep	0.017	0.657	V	0.000	400.000	mmho-m	625.153	-10.619
Medium	0.016	0.757	V	0.000	464.000	mmho-m	625.992	-9.739

Downhole Calibration

	Readings			References			Results	
	Zero	Cal		Zero	Cal		m'	b'
Deep	0.000	0.000	mmho-m	2.011	405.777	mmho-m	1.000	0.000
Medium	0.000	0.000	mmho-m	7.590	503.393	mmho-m	1.000	0.000
LL3		7.500	V		1500.000	Ohm-m		
		0.000	V		20.000	Ohm-m		
		-6.500	V		3800.000	mmho-m		

After Survey Verification

	Readings			Targets			Results	
	Zero	Cal		Zero	Cal		m'	b'
Deep	0.000	0.000	mmho-m	0.000	0.000	mmho-m	0.000	0.000
Medium	0.000	0.000	mmho-m	0.000	0.000	mmho-m	0.000	0.000
LL3		1.000	Ohm-m		1.000	Ohm-m		
		0.000	Ohm-m		0.000	Ohm-m		
		1.000	mmho-m		1.000	mmho-m		

Compensated Density Calibration Report

Serial-Model: GEAR4-GEARHART
 Source / Verifier: 143 / 143
 Master Calibration Performed: Fri Jan 16 10:06:35 2009

Master Calibration

	Density			Far Detector	Near Detector	
Magnesium	1.710	g/cc		1358.55	649.93	cps
Aluminum	2.580	g/cc		325.11	479.52	cps
Spine Angle = 78.00			Density/Spine Ratio = 0.595			
	Size			Reading		
Small Ring	8.00	in		3.56	V	
Large Ring	14.00	in		6.65	V	

Compensated Neutron Calibration Report

Serial Number: 5I
 Tool Model: G

CALIBRATION

Detector	Readings	Target	Normalization
Short Space	1.00 cps	1.00 cps	1.0000
Long Space	1.00 cps	1.00 cps	1.0000

Gamma Ray Calibration Report

Serial Number: GR6
 Tool Model: OPEN
 Performed: Mon Apr 06 01:29:18 2009

Calibrator Value: 150.0 GAPI

Background Reading: 0.0 cps
 Calibrator Reading: 276.0 cps

Sensitivity: 0.6435 GAPI/cps