



SUPERIOR
Hays,
Kansas

**DUAL
INDUCTION
LOG**

Company: TRANSPACIFIC OIL CORP.
Well: BROWN "A" #1-3
Field: WILDCAT
County: RUSSELL
State: KANSAS

Company: TRANSPACIFIC OIL CORPORATION
Well: BROWN "A" #1-3
Field: WILDCAT
County: RUSSELL
State: KANSAS

Location: API #: 15-167-23566-0000
1908FSL & 1439FWL
C-N/2-SW
SEC 3 TWP 11S RGE 13W
Permanent Datum: GROUND LEVEL Elevation: 1721
Log Measured From: KELLY BUSHING 8' A.G.L.
Drilling Measured From: KELLY BUSHING

Other Services
CDL/CNL
MEL/SONIC
Elevation

Date	04/08/2009		
Run Number	ONE		
Depth Driller	3625		
Depth Logger	3626		
Bottom Logged Interval	3624		
Top Log Interval	0		
Casing Driller	8 5/8 @ 436'		
Casing Logger	437'		
Bit Size	7 7/8		
Type Fluid In Hole	CHEMICAL MUD		
Density / Viscosity	9.3 / 55	CHLORIDES 6,400	
pH / Fluid Loss	10.0 / 9.8		
Source of Sample	FLOWLINE		
Rm @ Meas. Temp	0.75 @ 86F		
Rmf @ Meas. Temp	0.56 @ 86F		
Rmc @ Meas. Temp	0.90 @ 86F		
Source of Rmf / Rmc	CAL/CAL		
Rm @ BHT	0.57 @ 113F		
Time Circulation Stopped	2 HOURS		
Time Logger on Bottom	2:45 PM		
Maximum Recorded Temperature	113F		
Equipment Number	680		
Location	HAYS, KS		
Recorded By	JEFF GRONEWEG	JOE CRATHORNE	
Witnessed By	BETH ISERN		

<<< Fold Here >>>

All interpretations are opinions based on inferences from electrical or other measurements and we cannot and do not guarantee the accuracy or correctness of any interpretation, and we shall not, except in the case of gross or willful negligence on our part, be liable or responsible for any loss, costs, damages, or expenses incurred or sustained by anyone resulting from any interpretation made by any of our officers, agents or employees. These interpretations are also subject to our general terms and conditions set out in our current Price Schedule.

Comments

THANK YOU FOR USING SUPERIOR WELL SERVICES
HAYS, KS. 785-628-6395

DIRECTIONS: WALDO; 2 MILES EAST, 1/2 MILE NORTH, EAST INTO

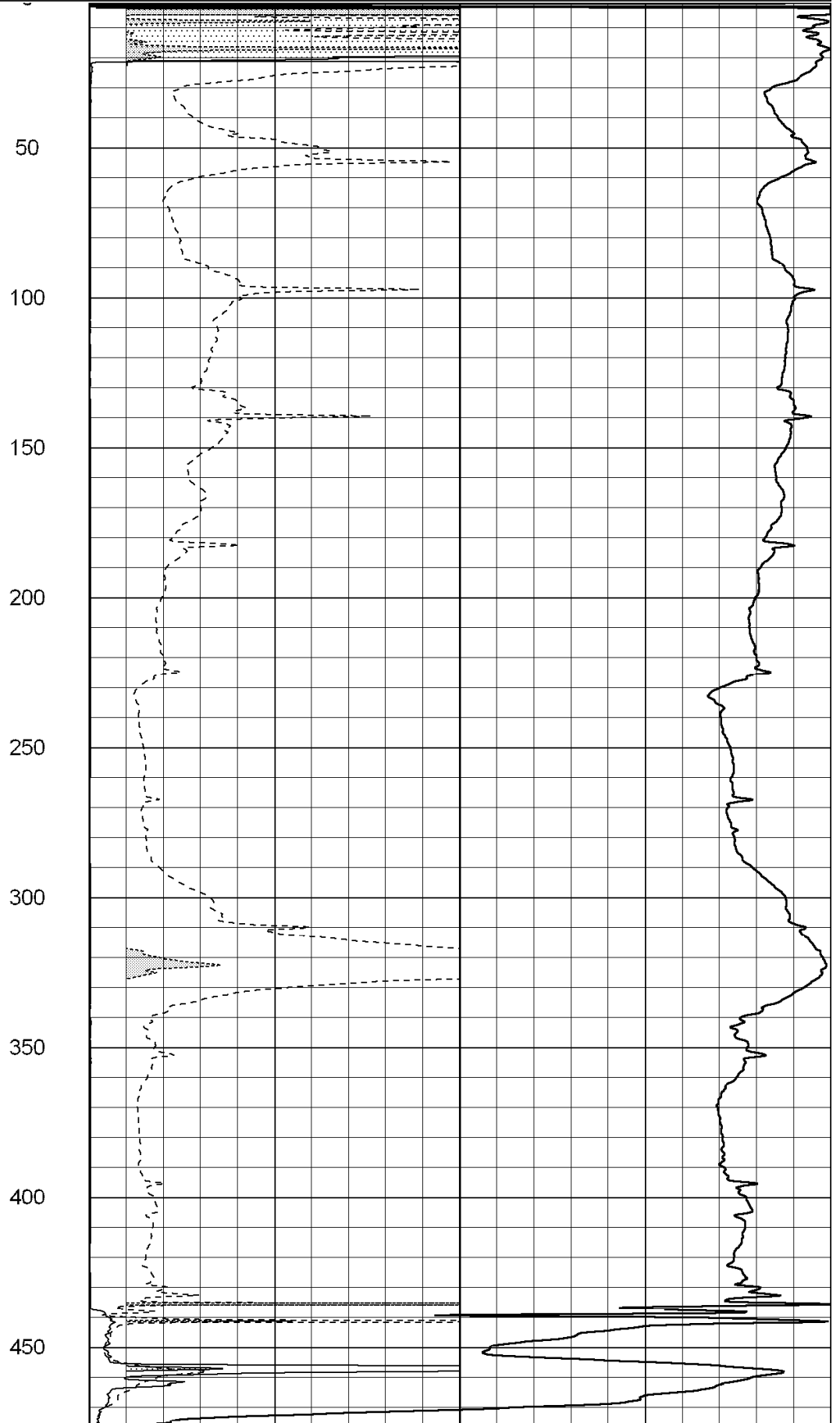
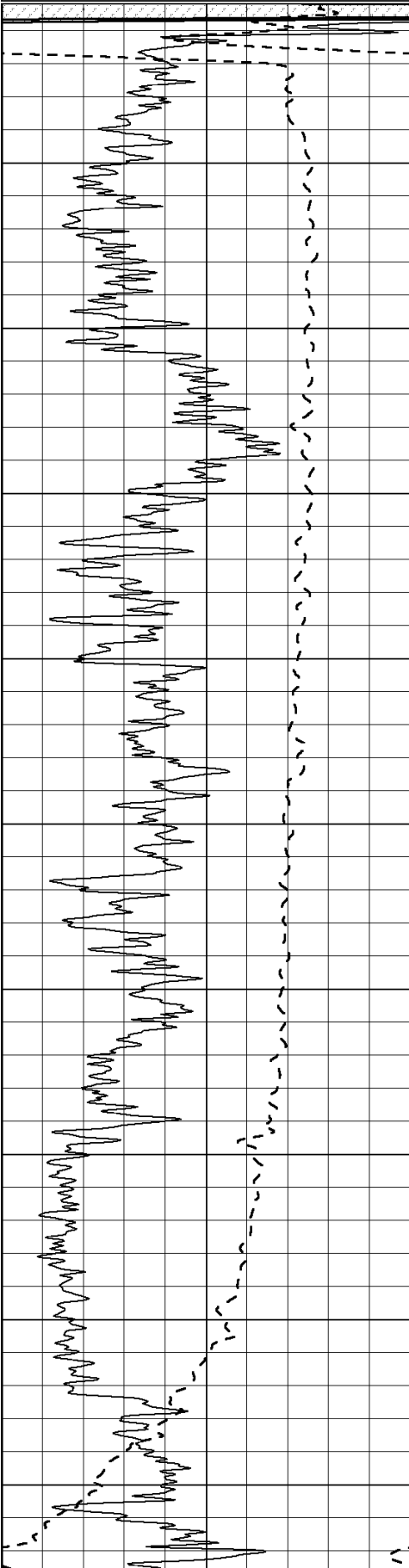
Charted by:

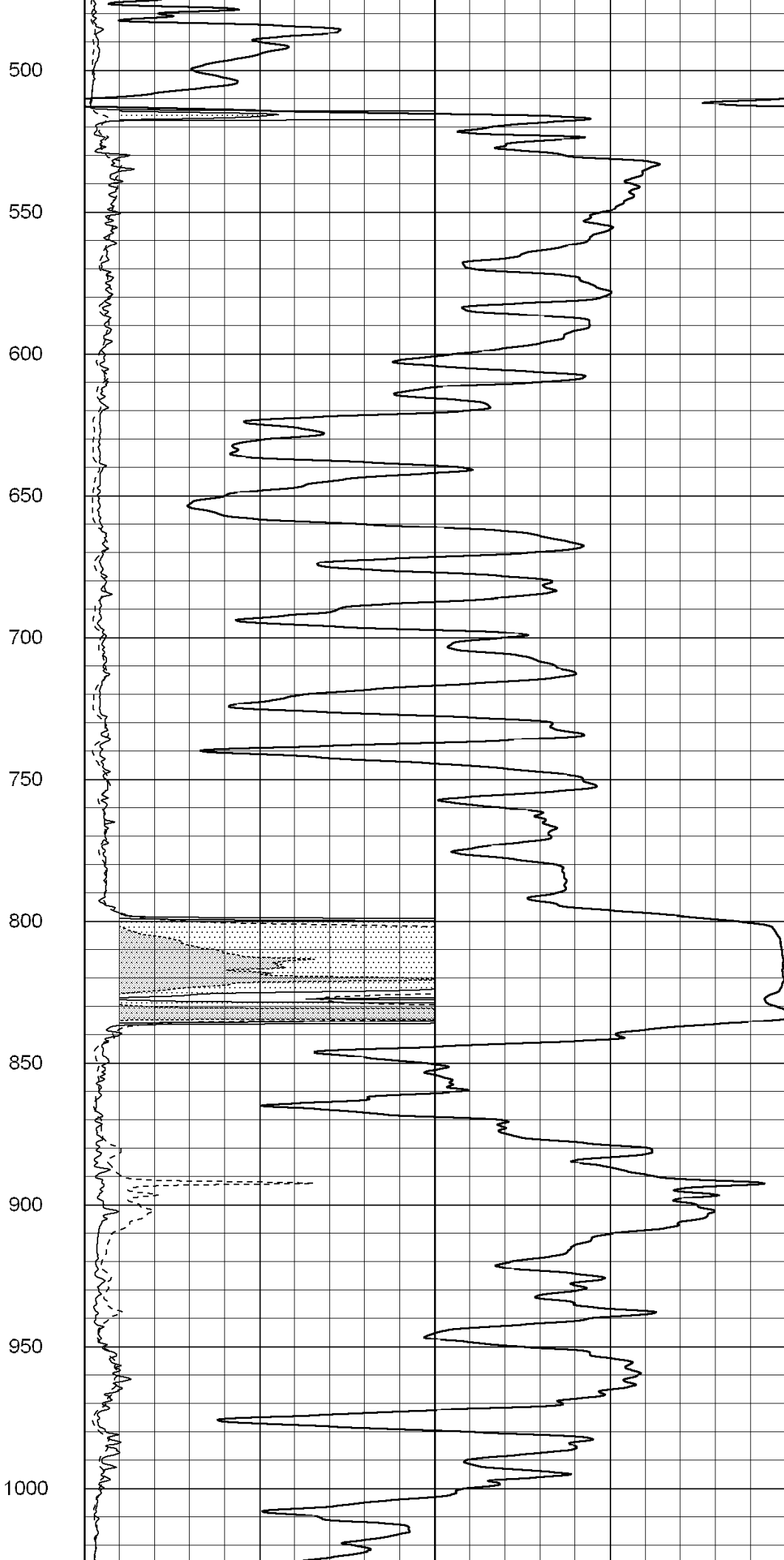
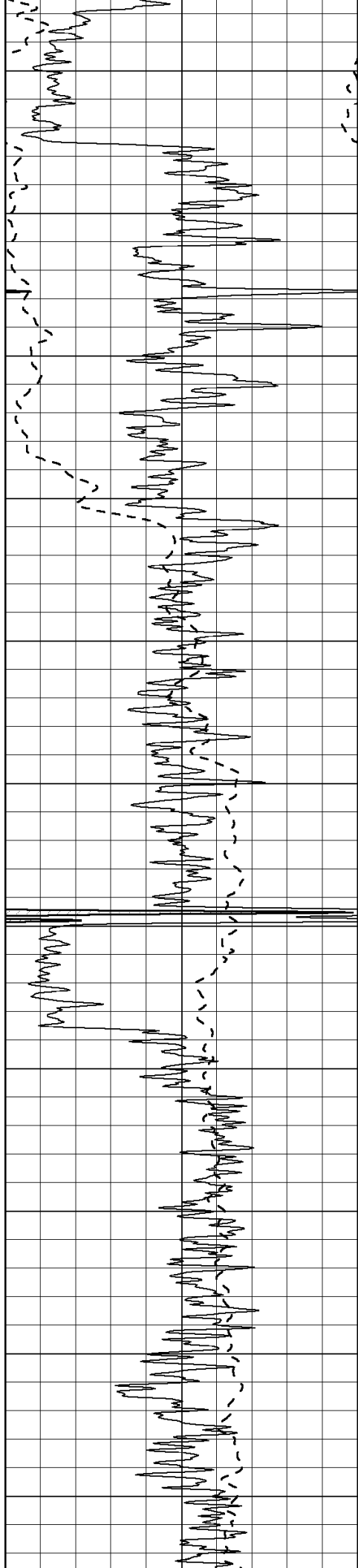
Depth in Feet scaled 1:600

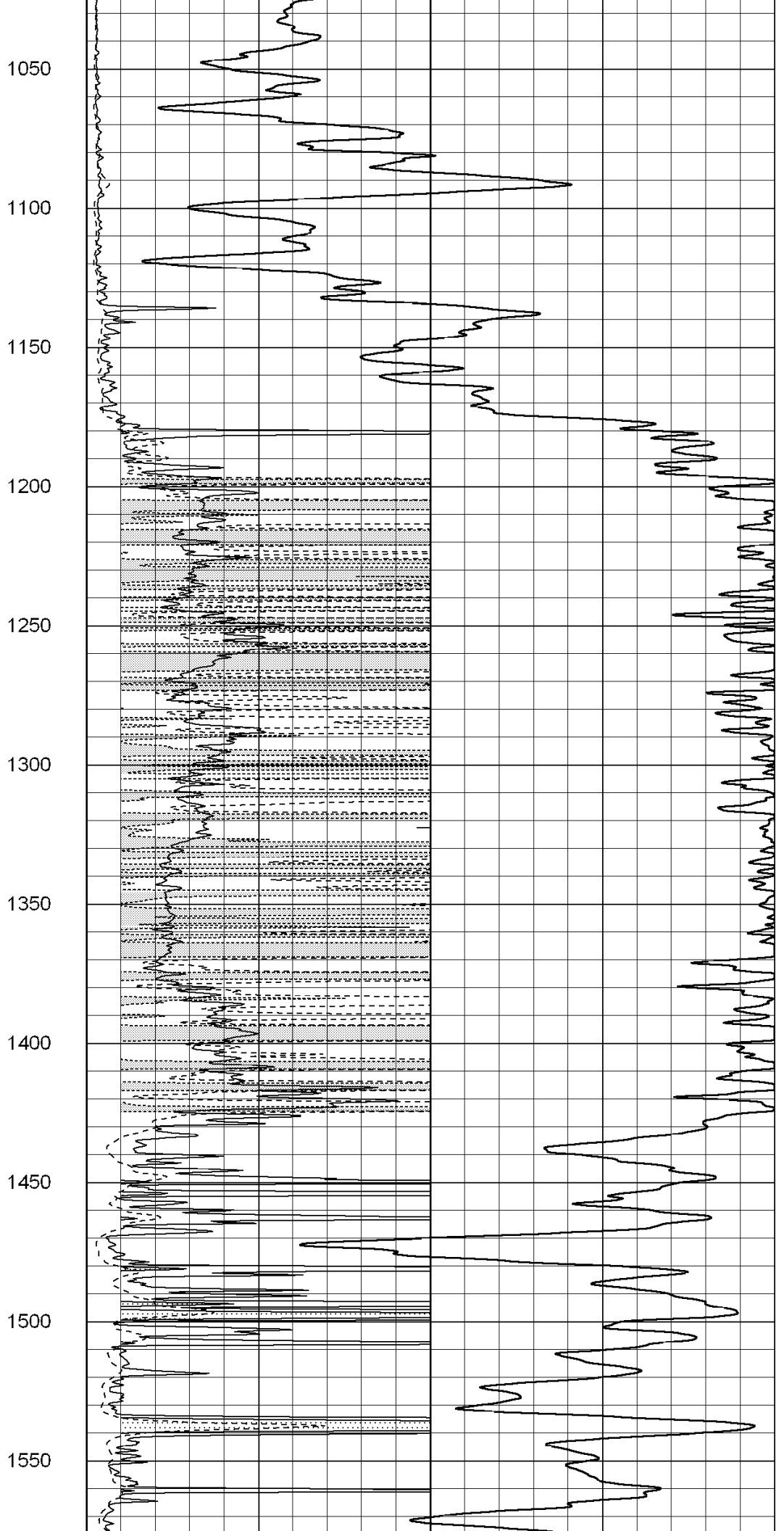
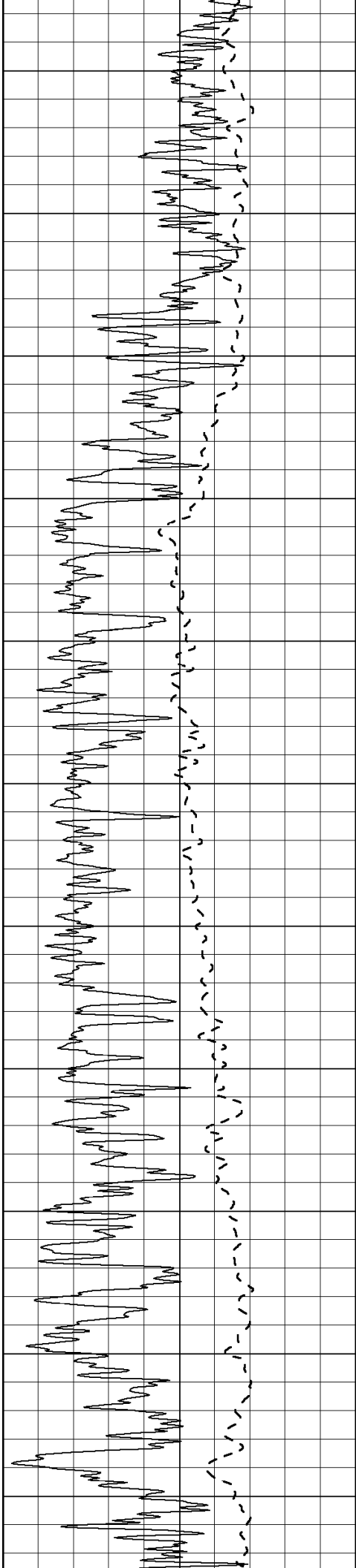
0	Gamma Ray (GAPI)	150
-100	SP (mV)	100

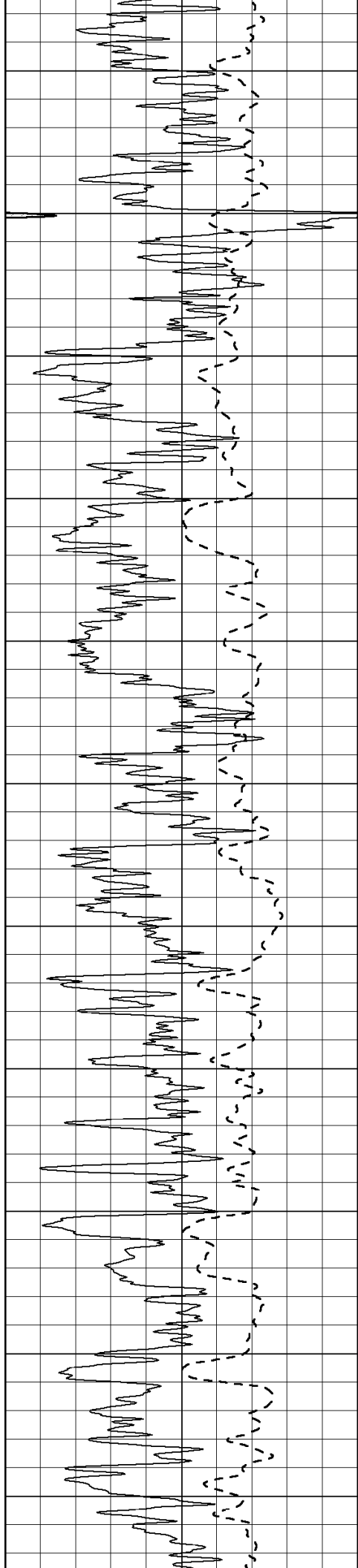
0	RLL3 (Ohm-m)	50
0	Deep Induction (Ohm-m)	50

1000	CILD (mmho-m)	0
50	RILD X10 (Ohm-m)	500
50	RLL3 X10 (Ohm-m)	500









1600

1650

1700

1750

1800

1850

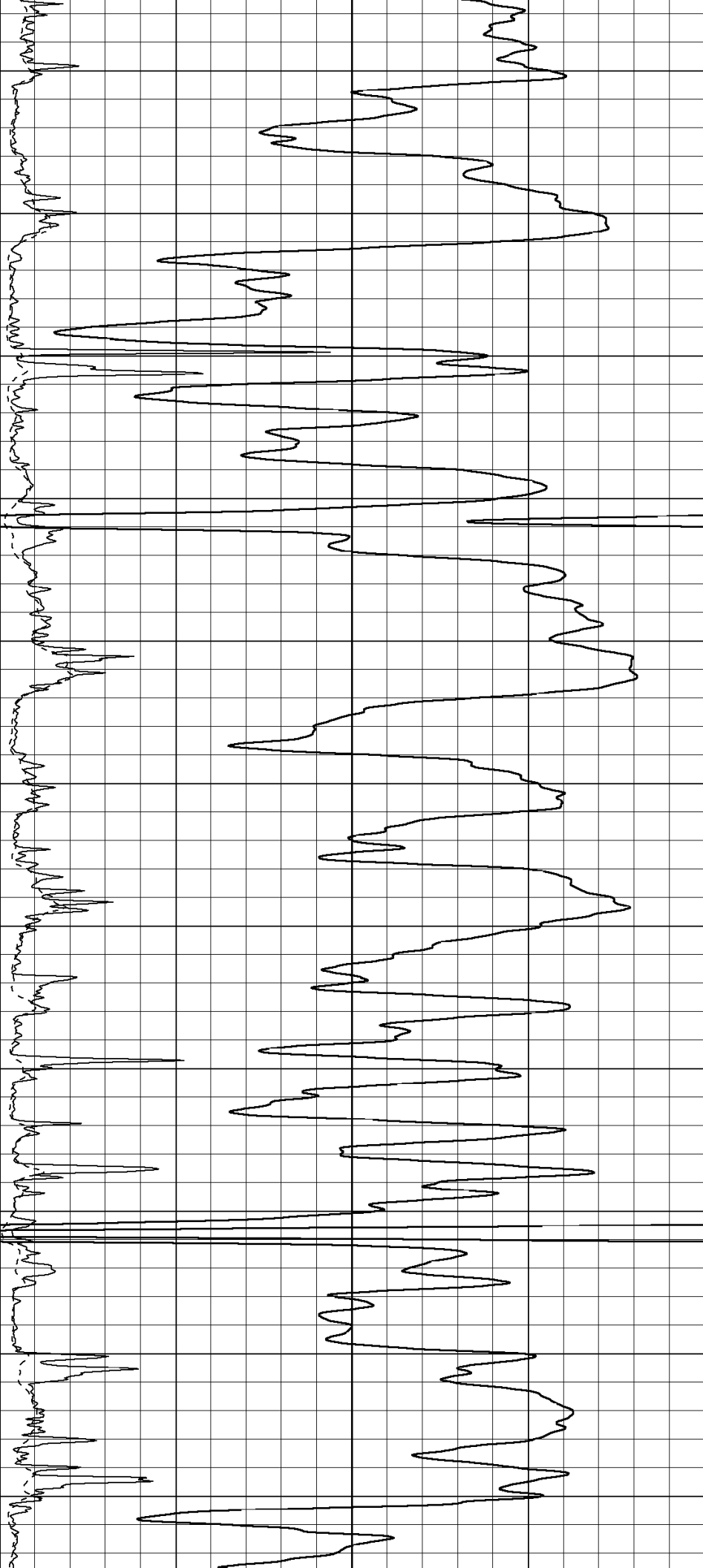
1900

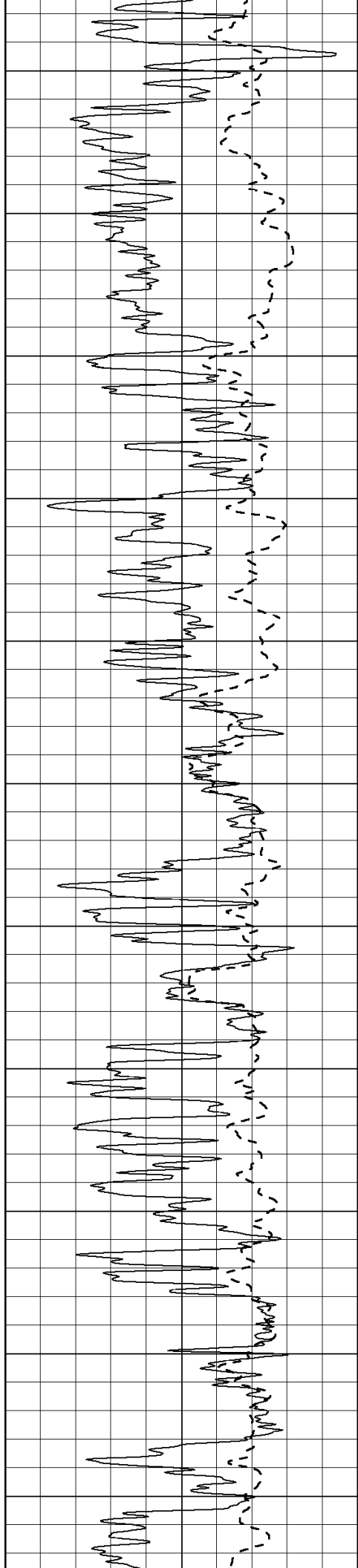
1950

2000

2050

2100





2150

2200

2250

2300

2350

2400

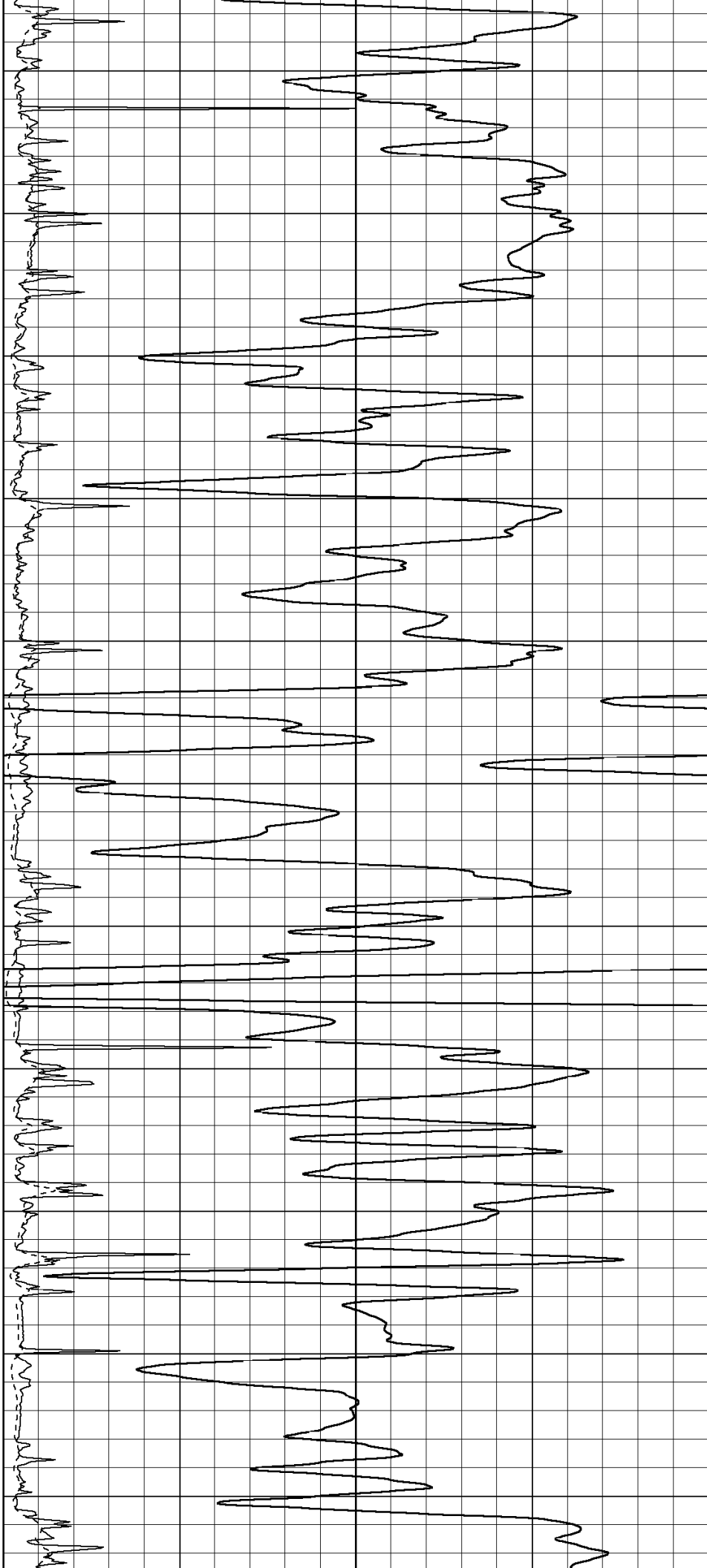
2450

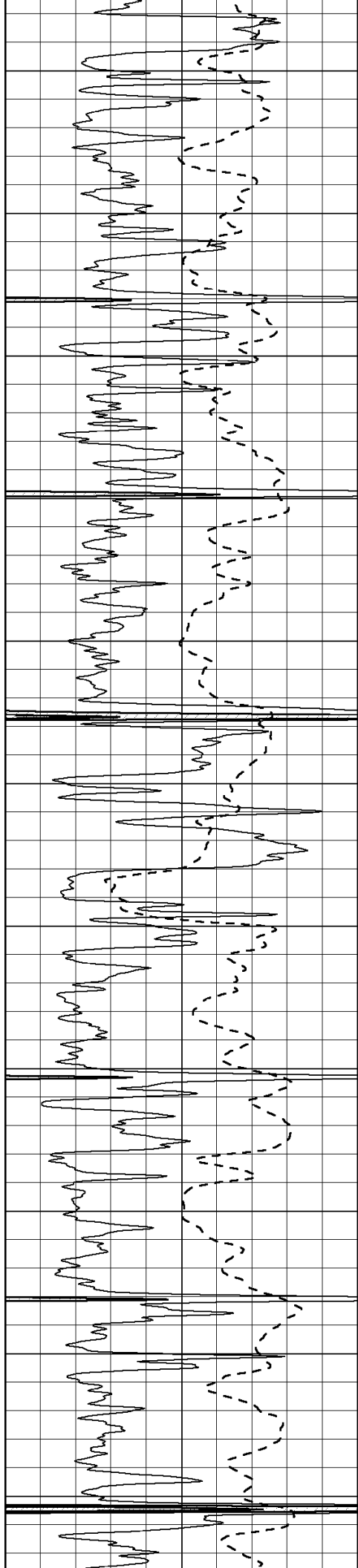
2500

2550

2600

2650





2700

2750

2800

2850

2900

2950

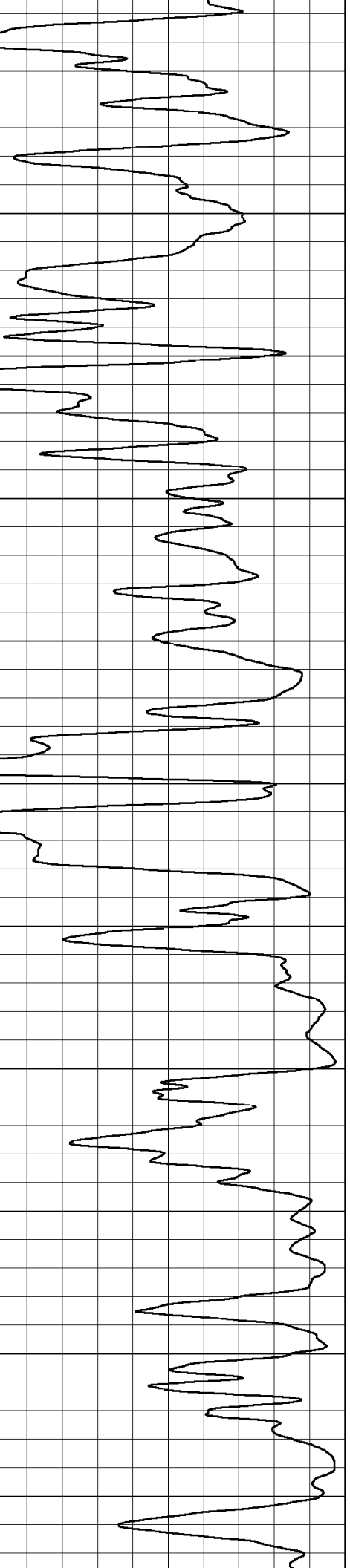
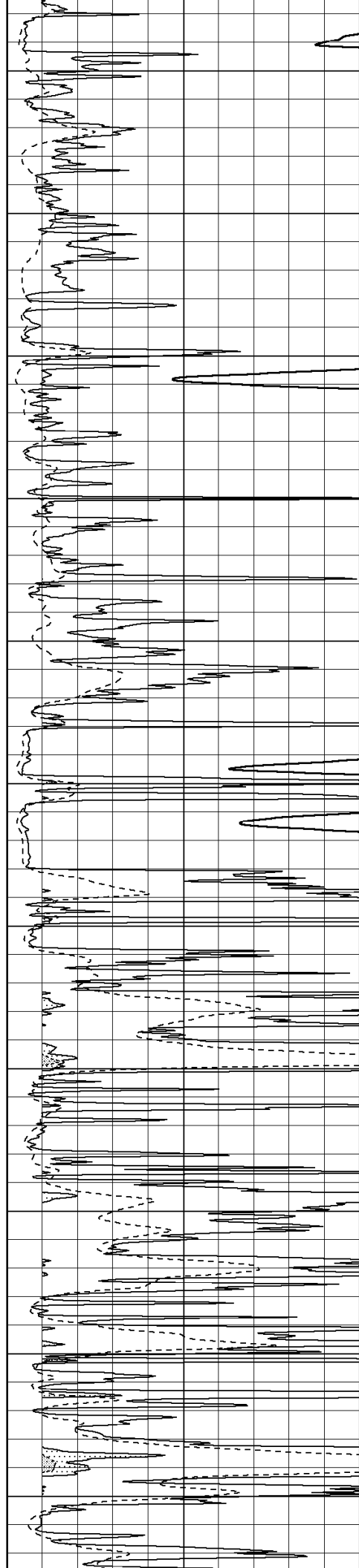
3000

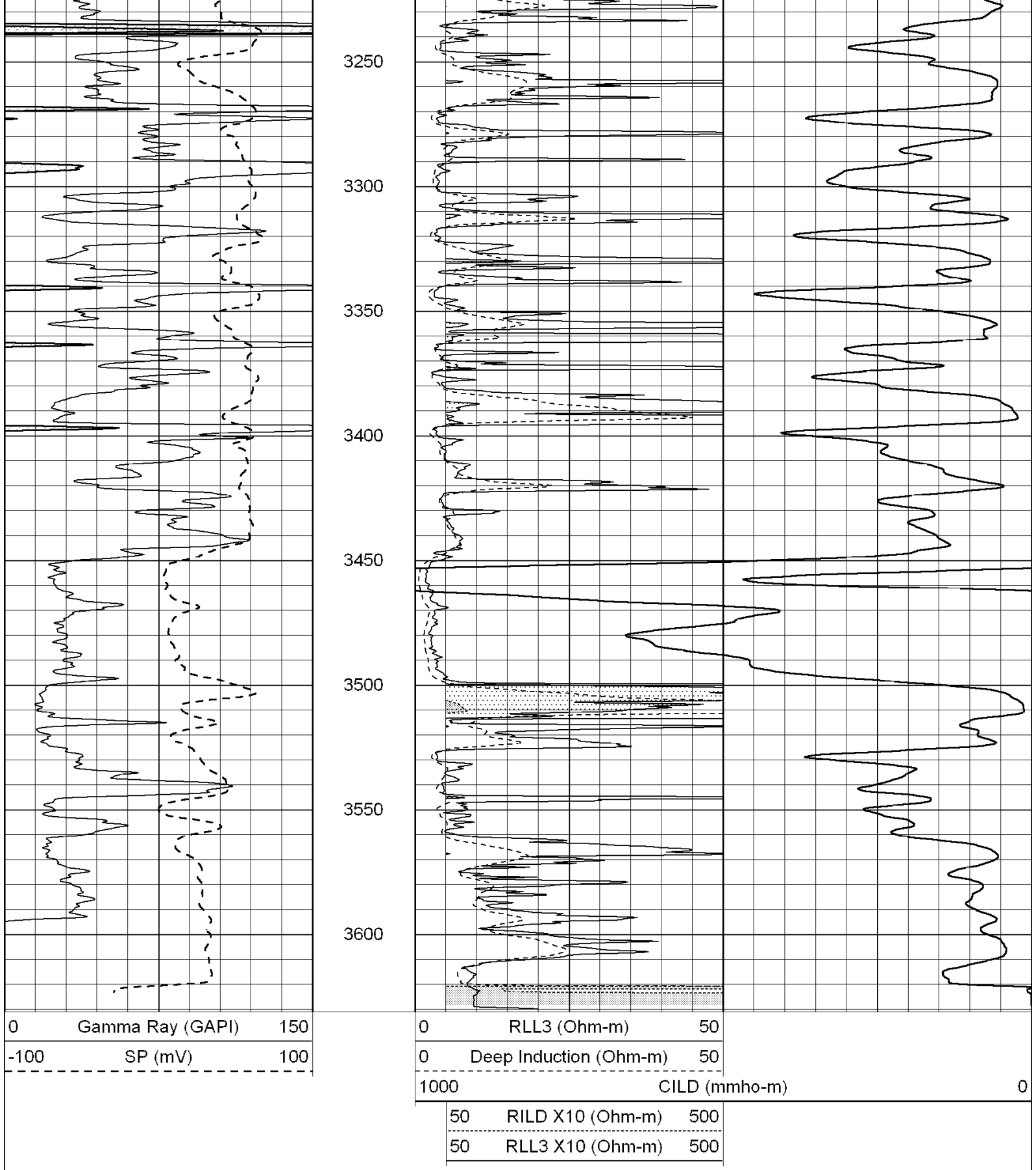
3050

3100

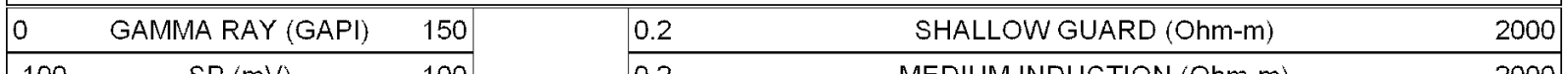
3150

3200



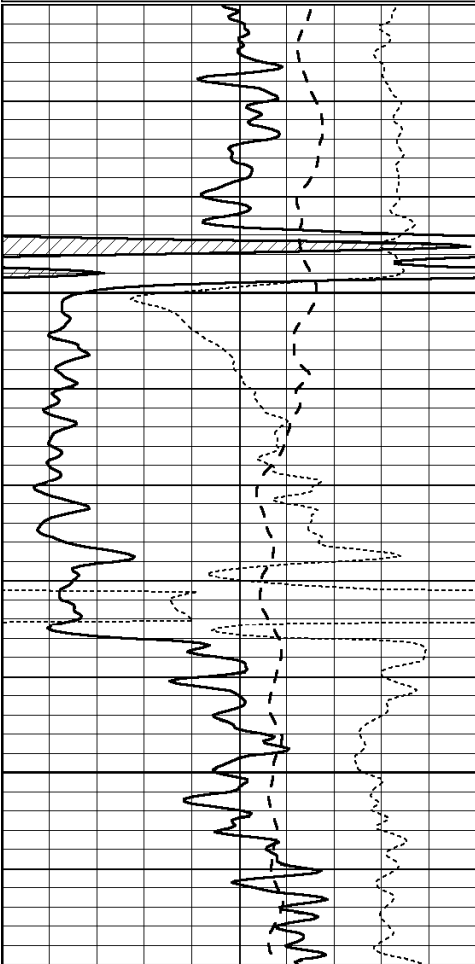


Database File: 003705ddn.db
Dataset Pathname: pass3.4
Presentation Format: _dil
Dataset Creation: Wed Apr 08 16:26:44 2009 by Calc Open-Cased 070814
Charted by: Depth in Feet scaled 1:240



-100	SP (mV)	100
-250	Rxo/Rt	50

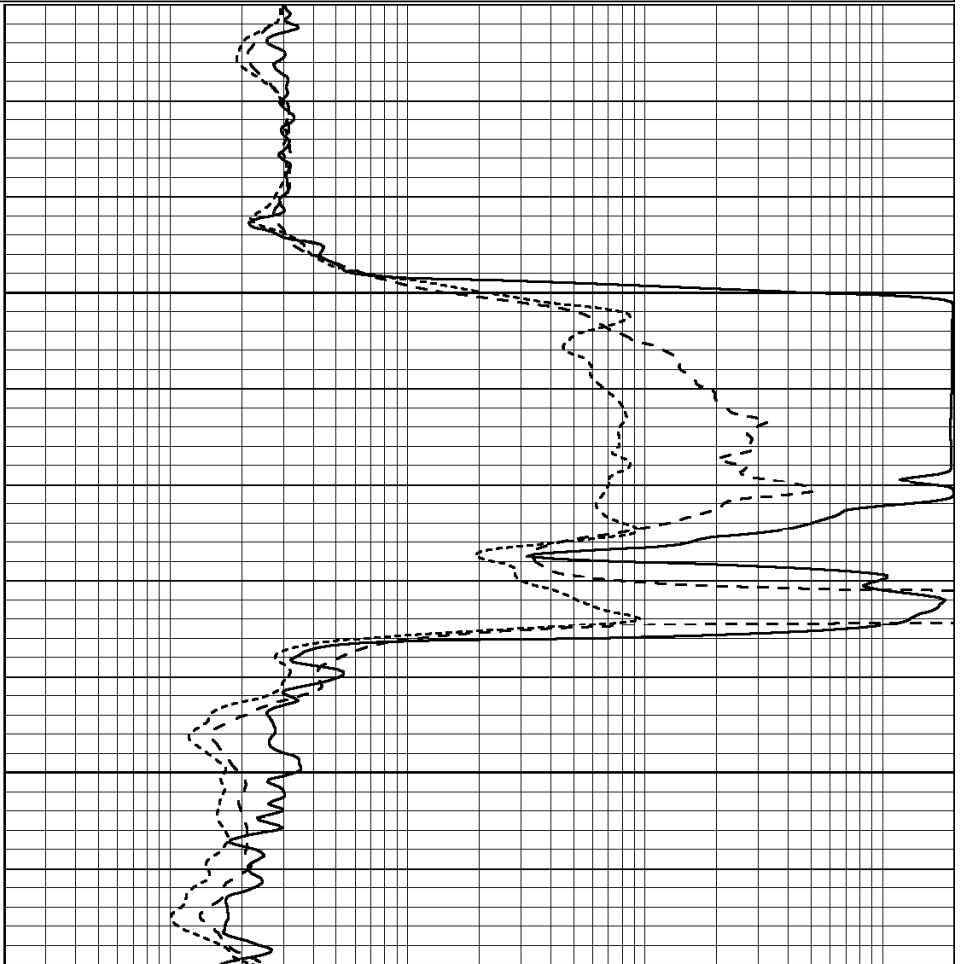
0.2	MEDIUM INDUCTION (Ohm-m)	2000
0.2	DEEP INDUCTION (Ohm-m)	2000



800

850

0	GAMMA RAY (GAPI)	150
-100	SP (mV)	100
-250	Rxo/Rt	50

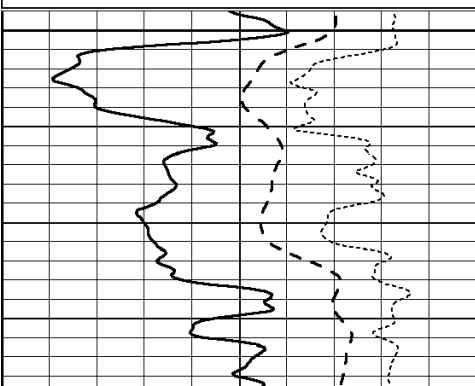


0.2	SHALLOW GUARD (Ohm-m)	2000
0.2	MEDIUM INDUCTION (Ohm-m)	2000
0.2	DEEP INDUCTION (Ohm-m)	2000

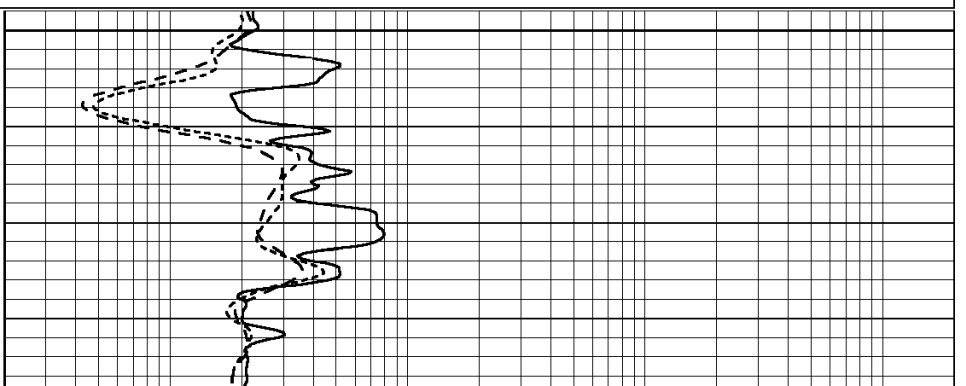
Database File: 003705ddn.db
 Dataset Pathname: pass3.4
 Presentation Format: _dil
 Dataset Creation: Wed Apr 08 16:26:44 2009 by Calc Open-Cased 070814
 Charted by: Depth in Feet scaled 1:240

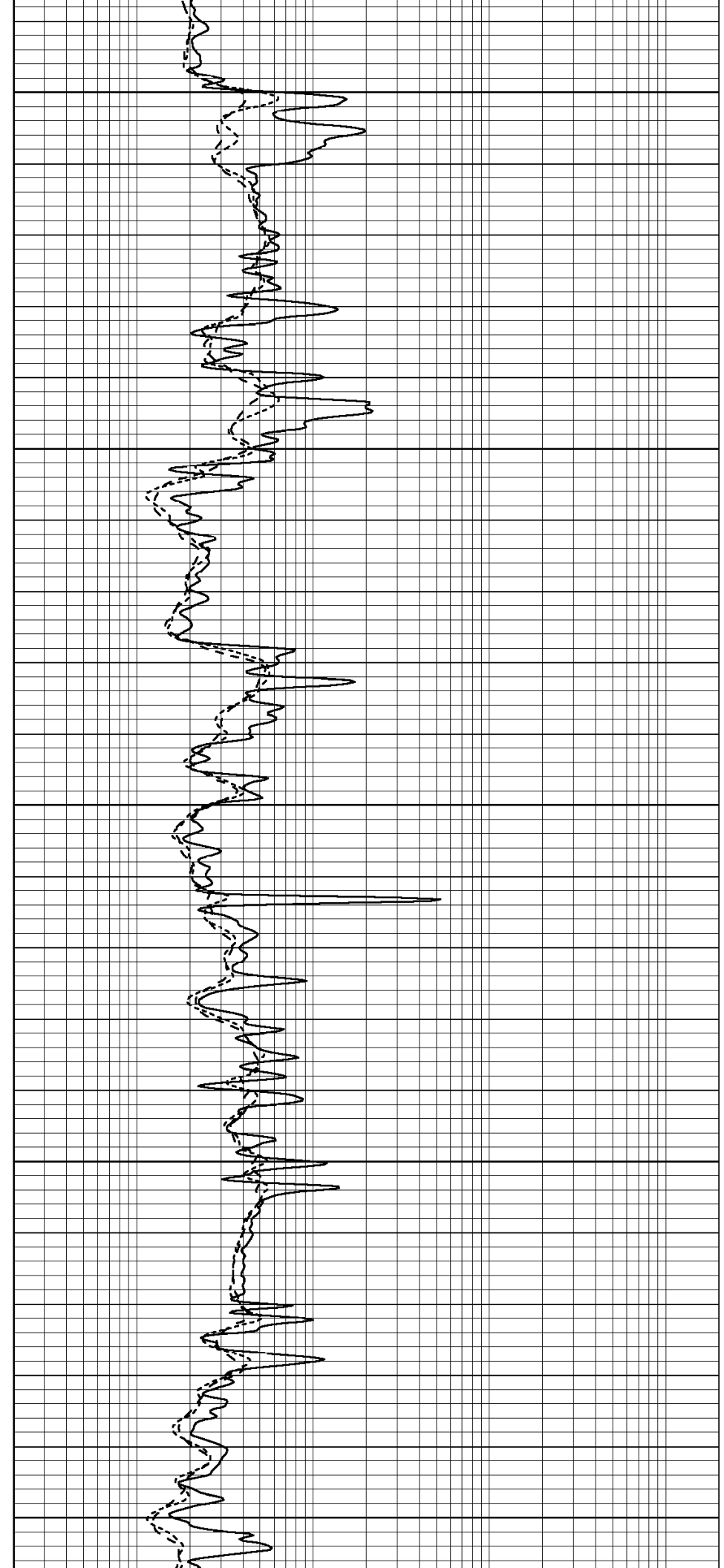
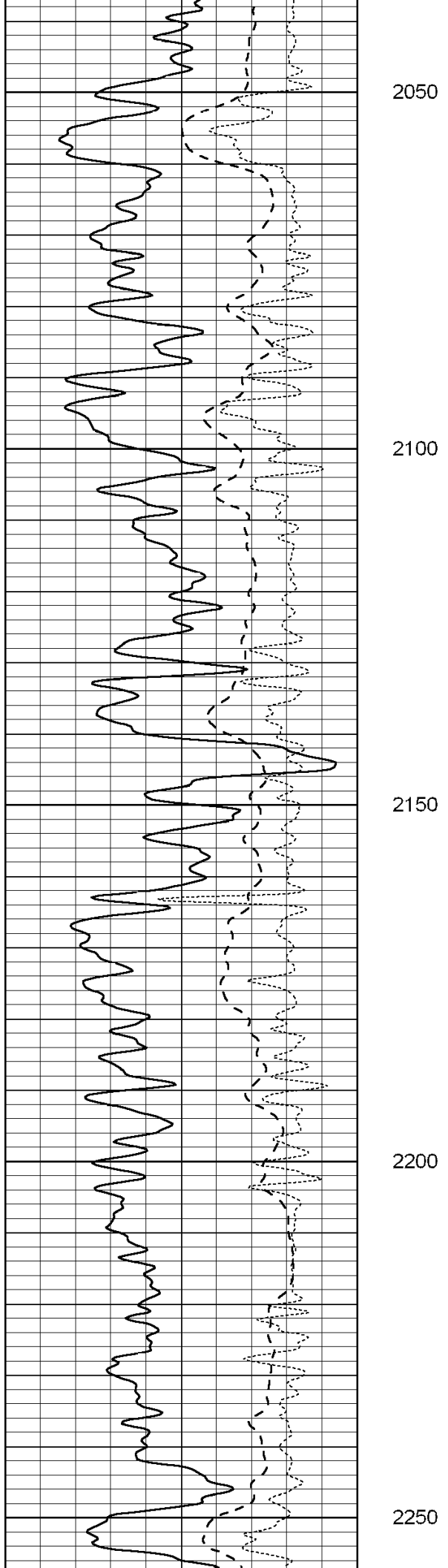
0	GAMMA RAY (GAPI)	150
-100	SP (mV)	100
-250	Rxo/Rt	50

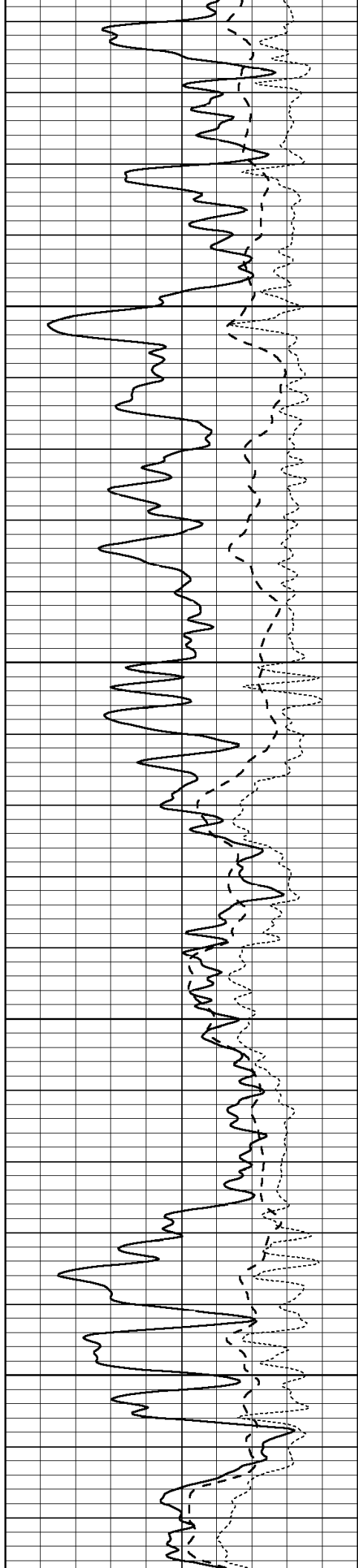
0.2	SHALLOW GUARD (Ohm-m)	2000
0.2	MEDIUM INDUCTION (Ohm-m)	2000
0.2	DEEP INDUCTION (Ohm-m)	2000



2000





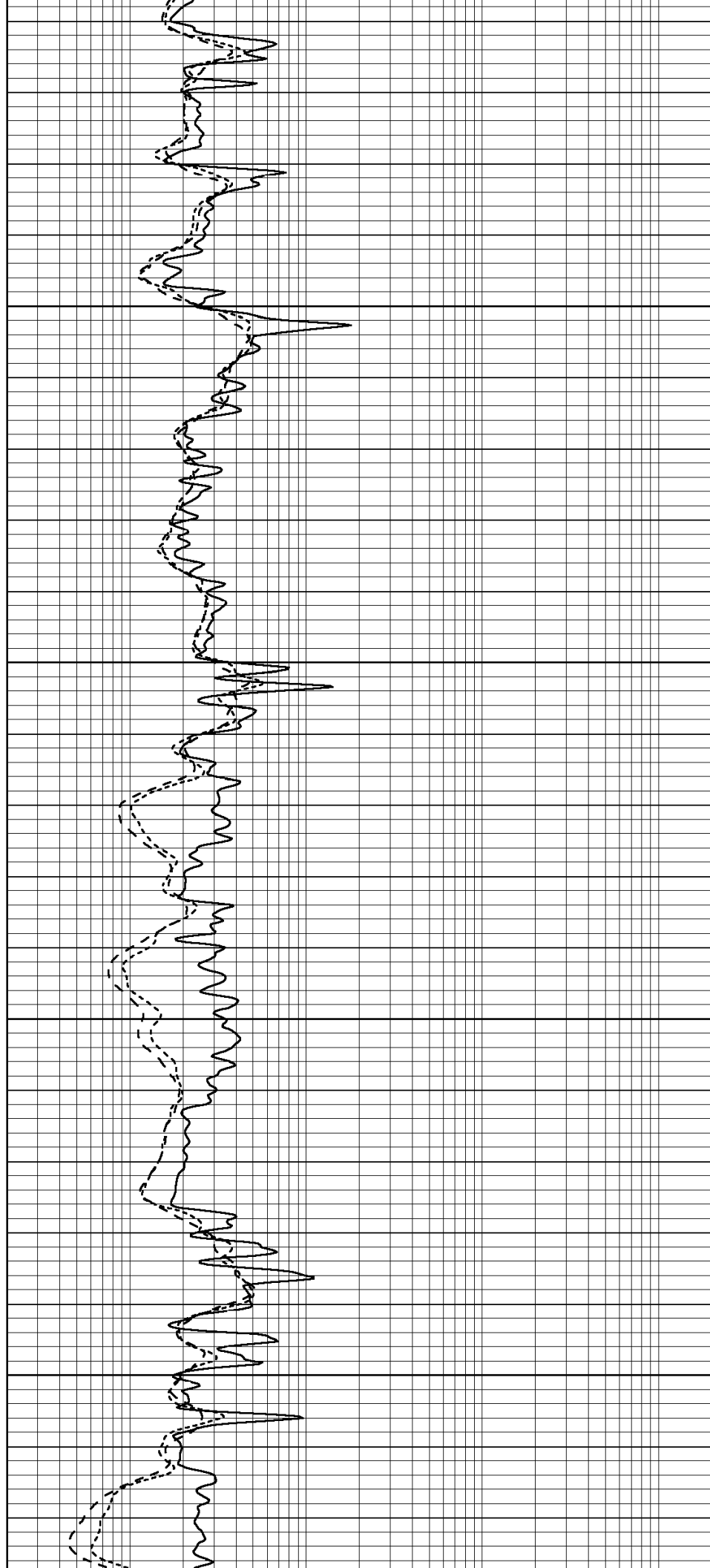


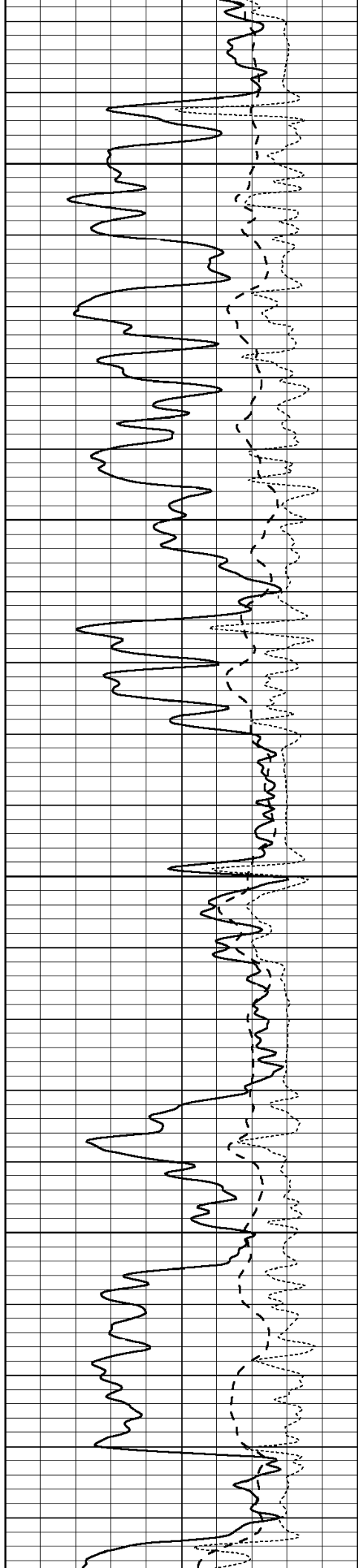
2300

2350

2400

2450



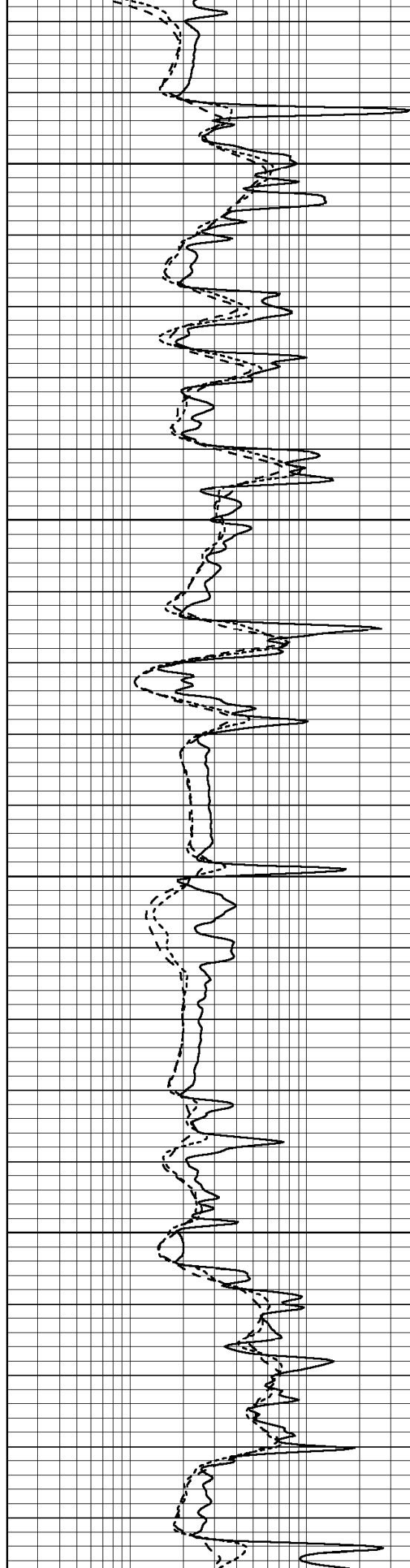


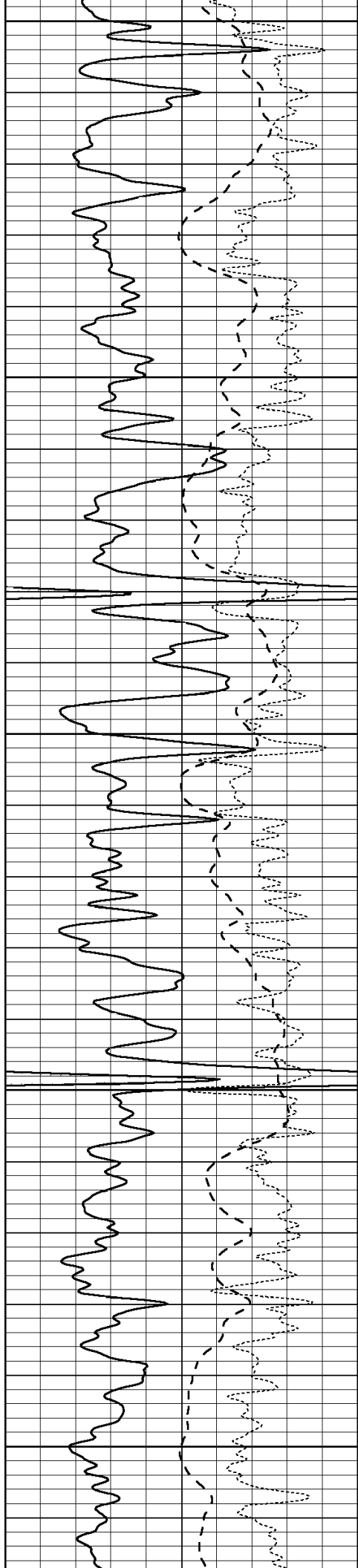
2500

2550

2600

2650





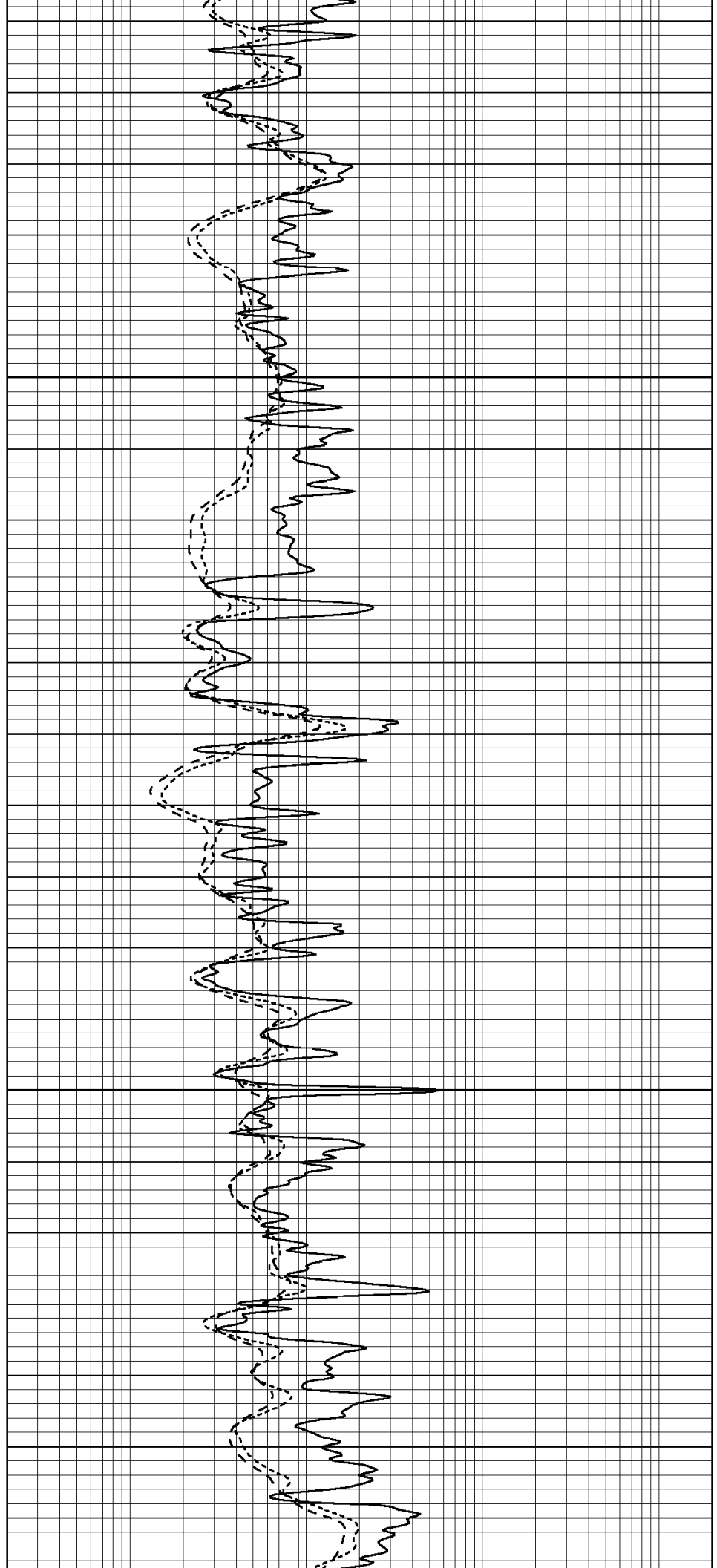
2700

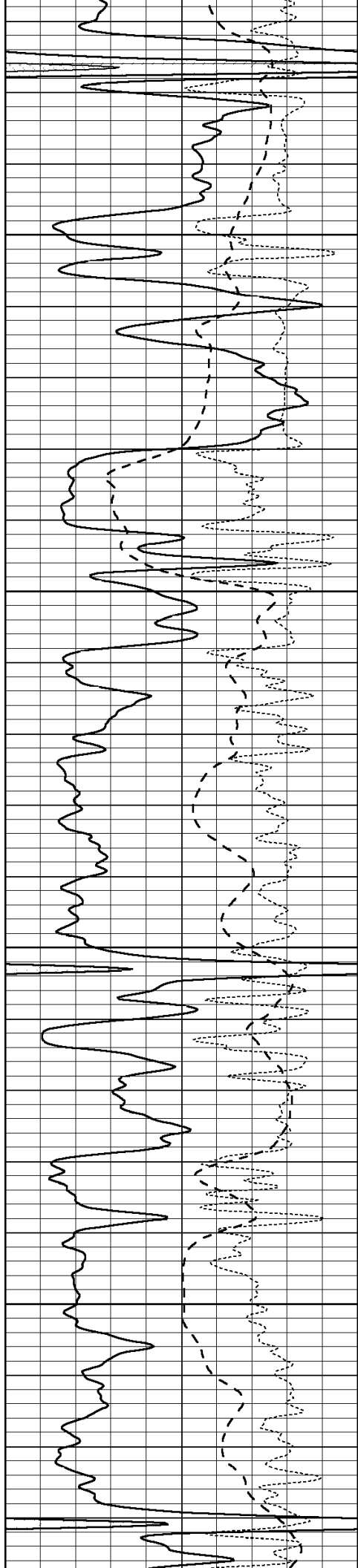
2750

2800

2850

2900



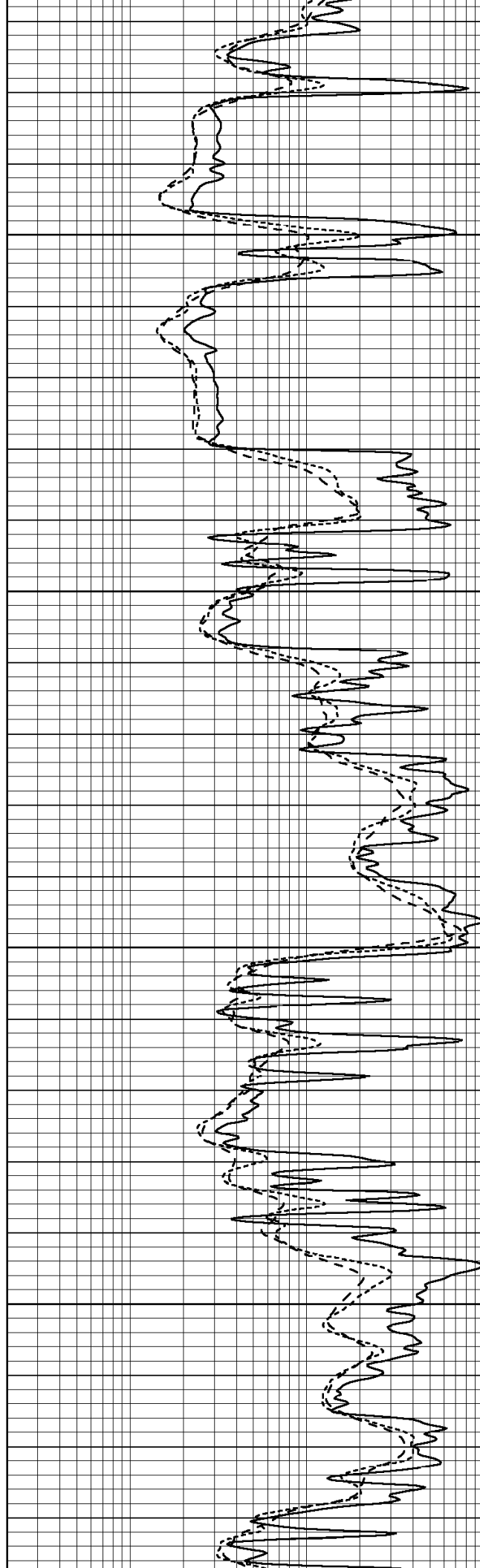


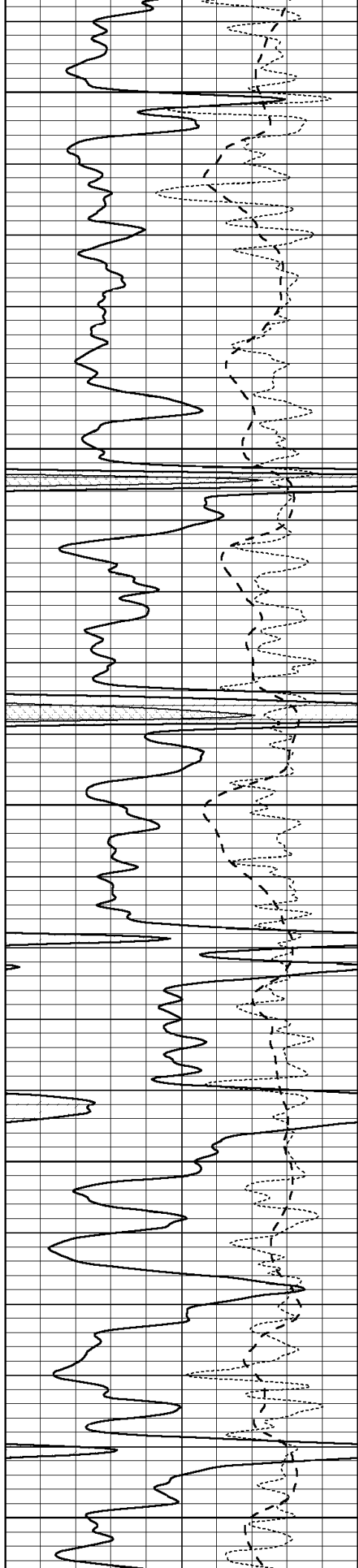
2950

3000

3050

3100





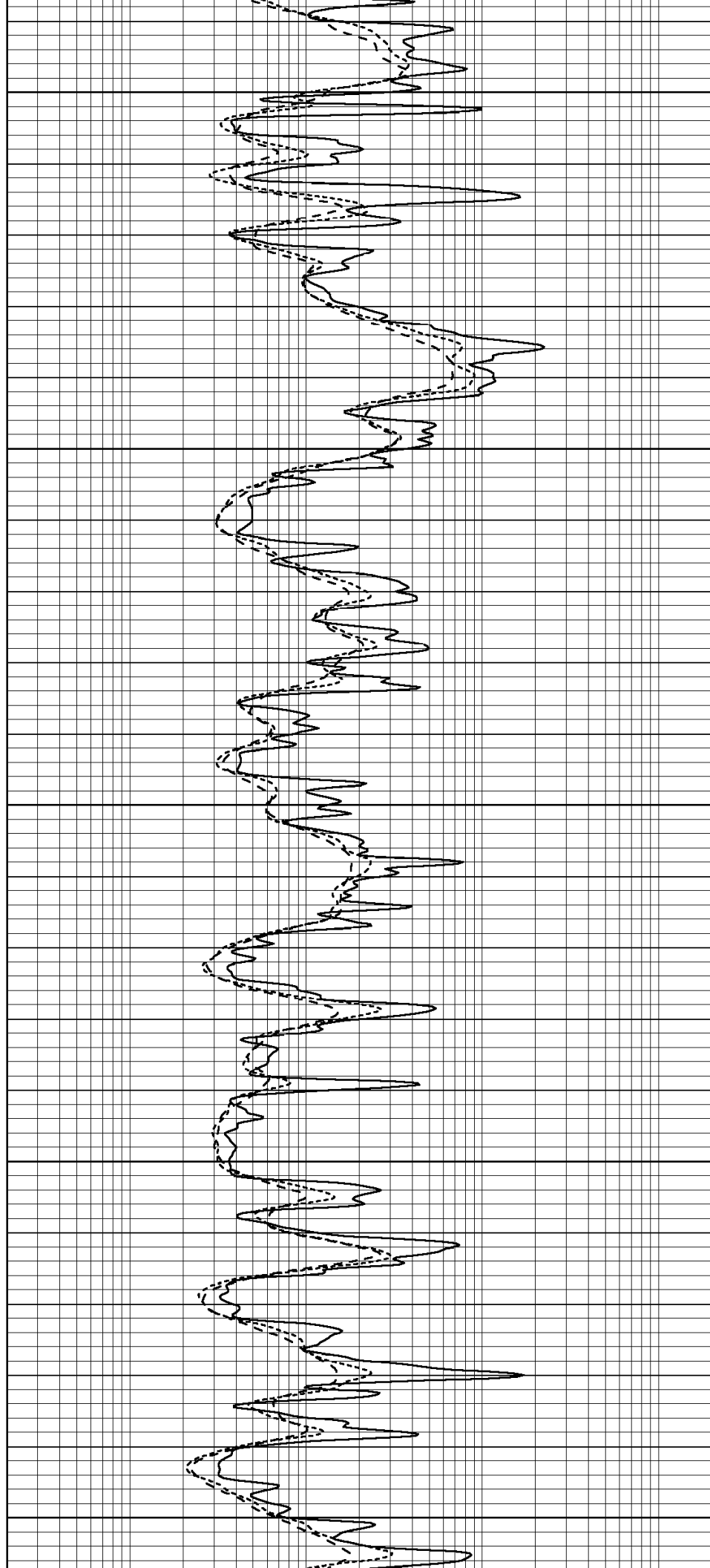
3150

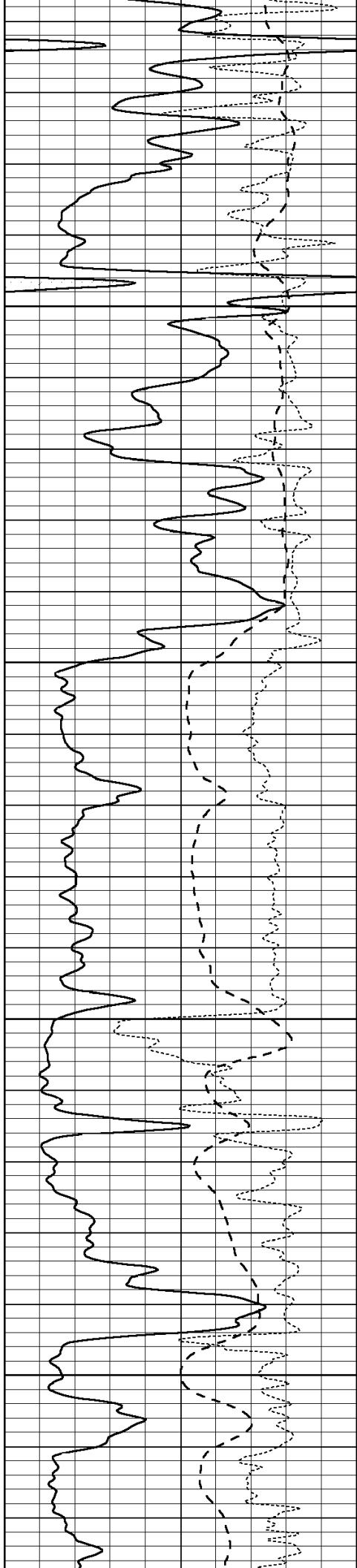
3200

3250

3300

3350



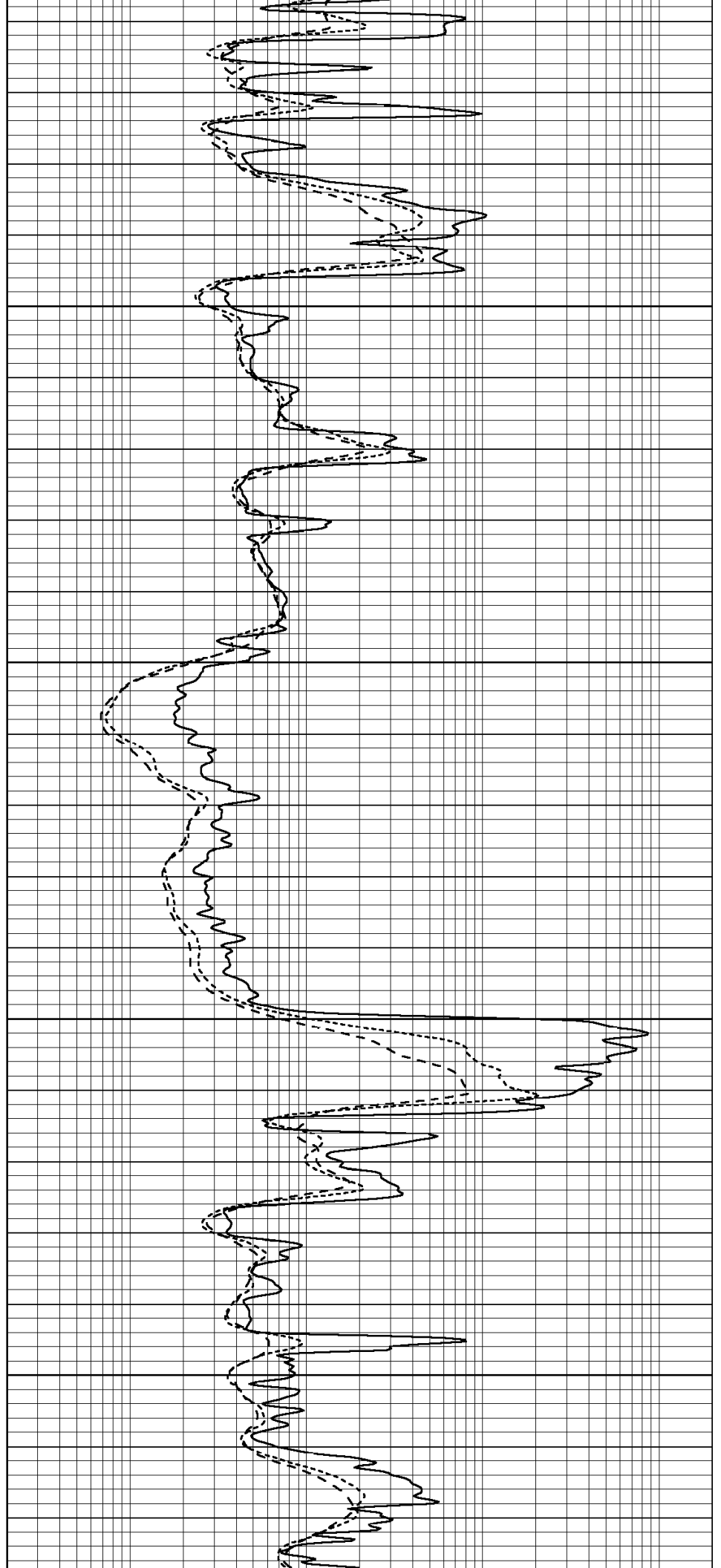


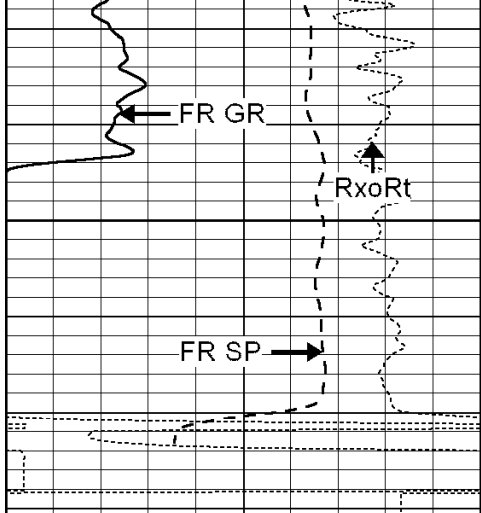
3400

3450

3500

3550

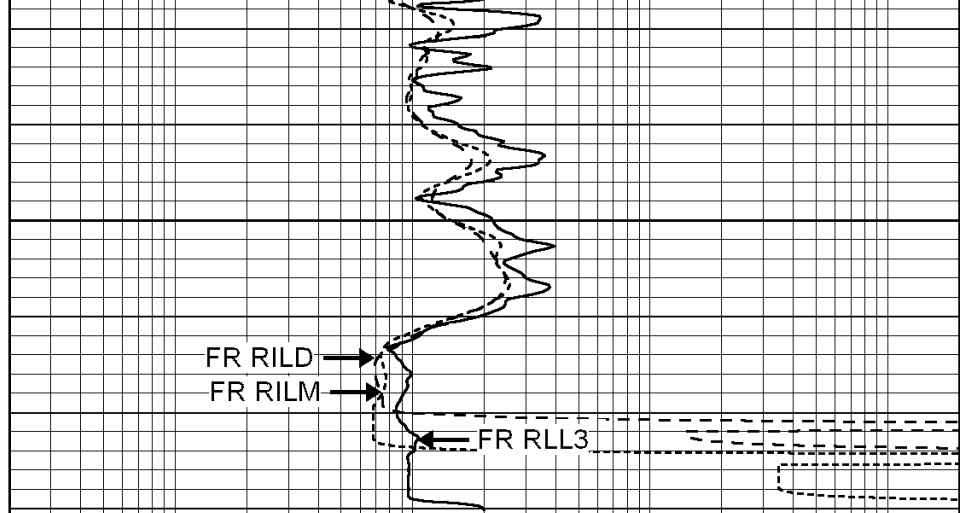




3600

LTD 3625

0	GAMMA RAY (GAPI)	150
-100	SP (mV)	100
-250	Rxo/Rt	50



0.2	SHALLOW GUARD (Ohm-m)	2000
0.2	MEDIUM INDUCTION (Ohm-m)	2000
0.2	DEEP INDUCTION (Ohm-m)	2000



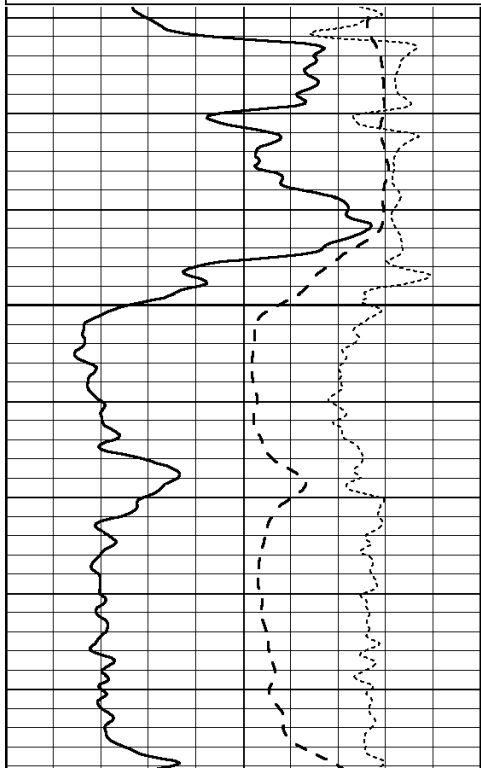
SUPERIOR
Hays,
Kansas

REPEAT SECTION

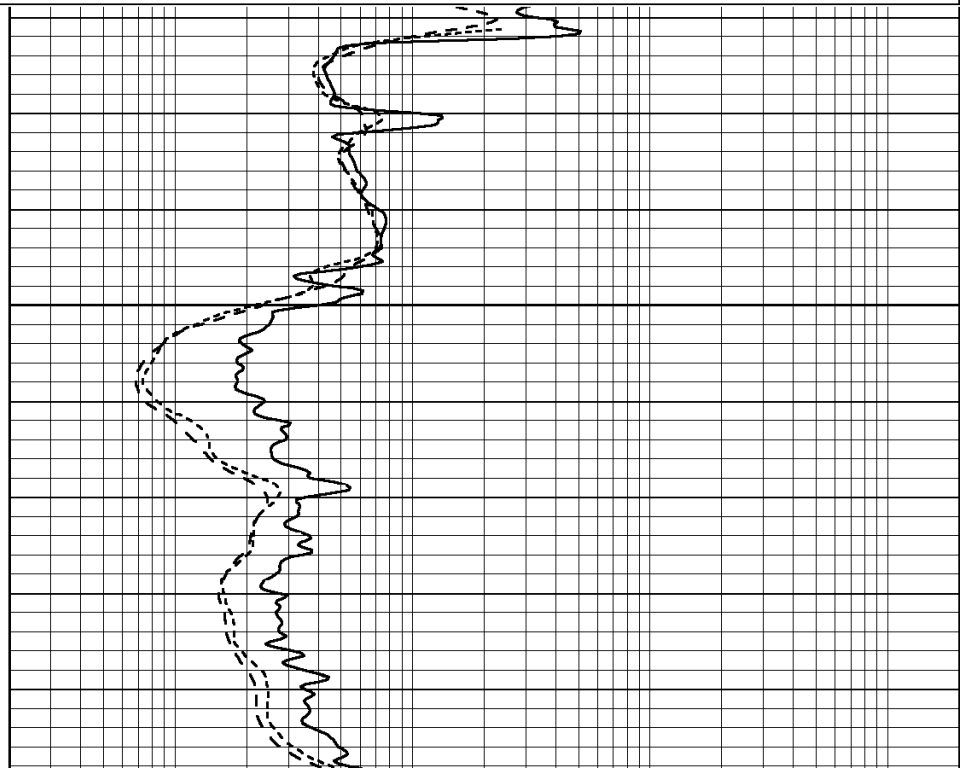
Database File: 003705ddn.db
 Dataset Pathname: pass2.5
 Presentation Format: _dil
 Dataset Creation: Wed Apr 08 16:41:14 2009
 Charted by: Depth in Feet scaled 1:240

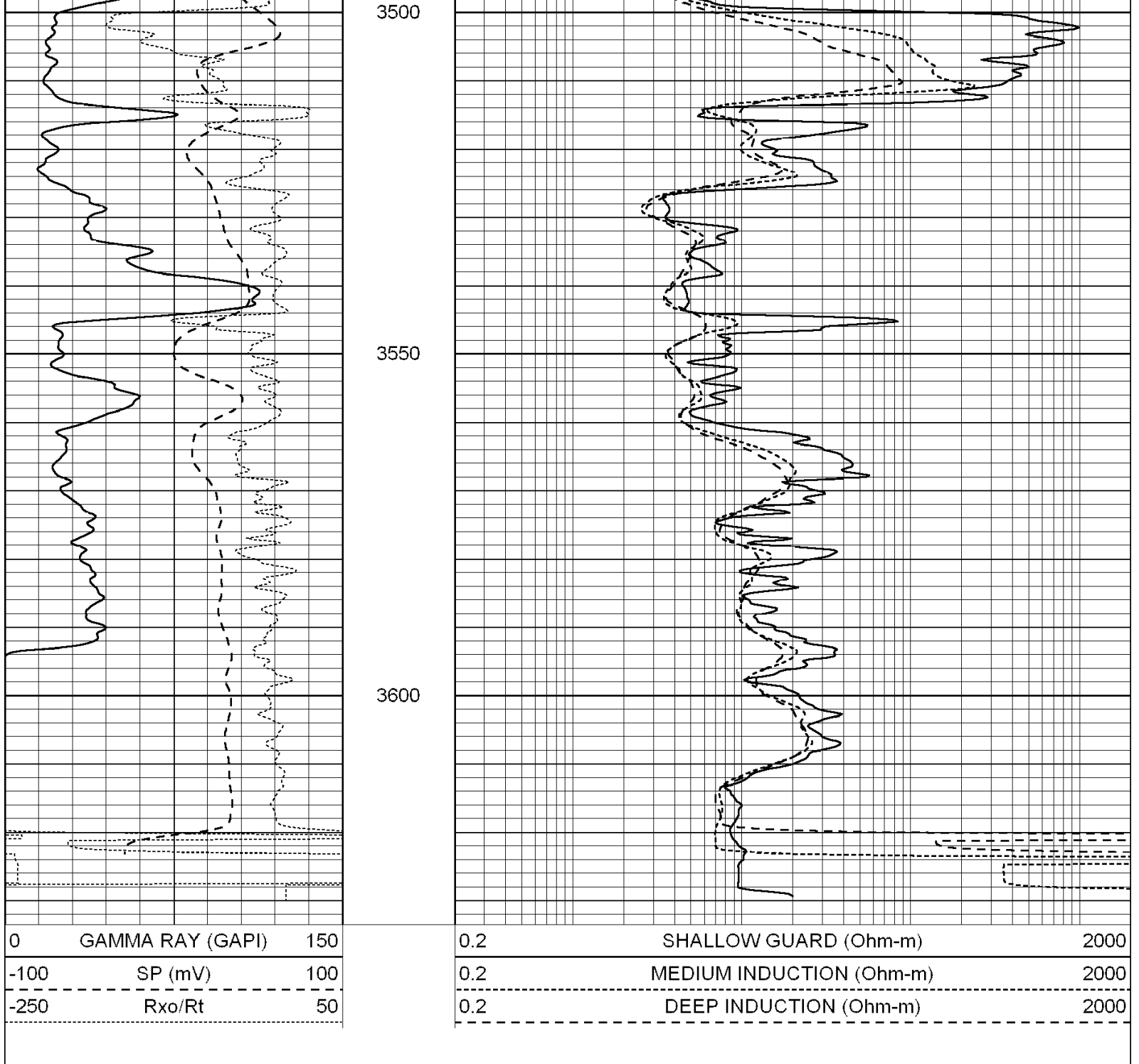
0	GAMMA RAY (GAPI)	150
-100	SP (mV)	100
-250	Rxo/Rt	50

0.2	SHALLOW GUARD (Ohm-m)	2000
0.2	MEDIUM INDUCTION (Ohm-m)	2000
0.2	DEEP INDUCTION (Ohm-m)	2000



3450





Calibration Report

Database File: 003705ddn.db
 Dataset Pathname: pass3.4
 Dataset Creation: Wed Apr 08 16:26:44 2009 by Calc Open-Cased 070814

Dual Induction Calibration Report

Serial-Model: PROBE8-DILG
 Surface Cal Performed: Fri Aug 01 06:33:19 2008
 Downhole Cal Performed: Mon Jul 28 11:08:27 2008
 After Survey Verification Performed: Mon Jul 28 11:08:27 2008

Surface Calibration

Loop:	Readings		References	Results			
	Air	Loop		m	b		
Deep	0.015	0.648	V	0.000	400.000 mmho-m	632.616	-9.730

Medium	0.029	0.796	V	0.000	464.000	mmho-m	605.049	-17.680
Internal:	Zero	Cal		Zero	Cal		m	b
Deep	0.017	0.657	V	0.000	400.000	mmho-m	625.153	-10.619
Medium	0.016	0.757	V	0.000	464.000	mmho-m	625.992	-9.739

Downhole Calibration								
	Readings			References			Results	
	Zero	Cal		Zero	Cal		m'	b'
Deep	0.000	0.000	mmho-m	2.011	405.777	mmho-m	1.000	0.000
Medium	0.000	0.000	mmho-m	7.590	503.393	mmho-m	1.000	0.000
LL3		7.500	V		1500.000	Ohm-m		
		0.000	V		20.000	Ohm-m		
		-6.500	V		3800.000	mmho-m		

After Survey Verification								
	Readings			Targets			Results	
	Zero	Cal		Zero	Cal		m'	b'
Deep	0.000	0.000	mmho-m	0.000	0.000	mmho-m	0.000	0.000
Medium	0.000	0.000	mmho-m	0.000	0.000	mmho-m	0.000	0.000
LL3		1.000	Ohm-m		1.000	Ohm-m		
		0.000	Ohm-m		0.000	Ohm-m		
		1.000	mmho-m		1.000	mmho-m		

Compensated Density Calibration Report

Serial-Model:	GEAR4-GEARHART
Source / Verifier:	143 / 143
Master Calibration Performed:	Fri Jan 16 10:06:35 2009

Master Calibration						
	Density		Far Detector	Near Detector		
Magnesium	1.710	g/cc	1358.55	649.93	cps	
Aluminum	2.580	g/cc	325.11	479.52	cps	
	Spine Angle = 78.00		Density/Spine Ratio = 0.595			
	Size		Reading			
Small Ring	8.00	in	3.56	V		
Large Ring	14.00	in	6.65	V		

Compensated Neutron Calibration Report

Serial Number:	5I
Tool Model:	G

CALIBRATION						
	Detector	Readings		Target		Normalization
	Short Space	1.00	cps	1.00	cps	1.0000
	Long Space	1.00	cps	1.00	cps	1.0000

Gamma Ray Calibration Report

Serial Number:	GR6
Tool Model:	OPEN
Performed:	Mon Apr 06 01:29:18 2009
Calibrator Value:	150.0
	GAPI

Background Reading:

0.0

cps

Calibrator Reading:

276.0

cps

Sensitivity:

0.6435

GAPI/cps