



**SUPERIOR**  
Hays,  
Kansas

**SONIC**  
LOG

Company: TRANSPACIFIC OIL CORP.  
Well: BROWN "A" #1-3  
Field: WILDCAT  
County: RUSSELL  
State: KANSAS

Company: TRANSPACIFIC OIL CORPORATION  
Well: BROWN "A" #1-3  
Field: WILDCAT  
County: RUSSELL  
State: KANSAS

Location: API #: 15-167-23566-0000  
1908FSL & 1439FWL  
C-N/2-SW  
SEC 3 TWP 11S RGE 13W  
Permanent Datum: GROUND LEVEL Elevation: 1721  
Log Measured From: KELLY BUSHING 8' A.G.L.  
Drilling Measured From: KELLY BUSHING  
Other Services: DIL/CDL, CNL/MICRO  
Elevation: K.B. 1729, D.F. 1727, G.L. 1721

Date	04/08/2009
Run Number	TWO
Depth Driller	3625
Depth Logger	3626
Bottom Logged Interval	3619
Top Log Interval	0
Casing Driller	8 5/8 @ 436'
Casing Logger	437'
Bit Size	7 7/8
Type Fluid In Hole	CHEMICAL MUD
Density / Viscosity	9.3 / 55
pH / Fluid Loss	10.0 / 9.8
Source of Sample	FLOWLINE
Rm @ Meas. Temp	0.75 @ 86F
Rmf @ Meas. Temp	0.56 @ 86F
Rmc @ Meas. Temp	0.90 @ 86F
Source of Rmf / Rmc	CAL/CAL
Rm @ BHT	0.57 @ 113F
Time Circulation Stopped	2 HOURS
Time Logger on Bottom	2:45 PM
Maximum Recorded Temperature	113F
Equipment Number	680
Location	HAYS, KS
Recorded By	JEFF GRONEWEG
Witnessed By	BETH ISERN
	JOE CRATHORNE

<<< Fold Here >>>

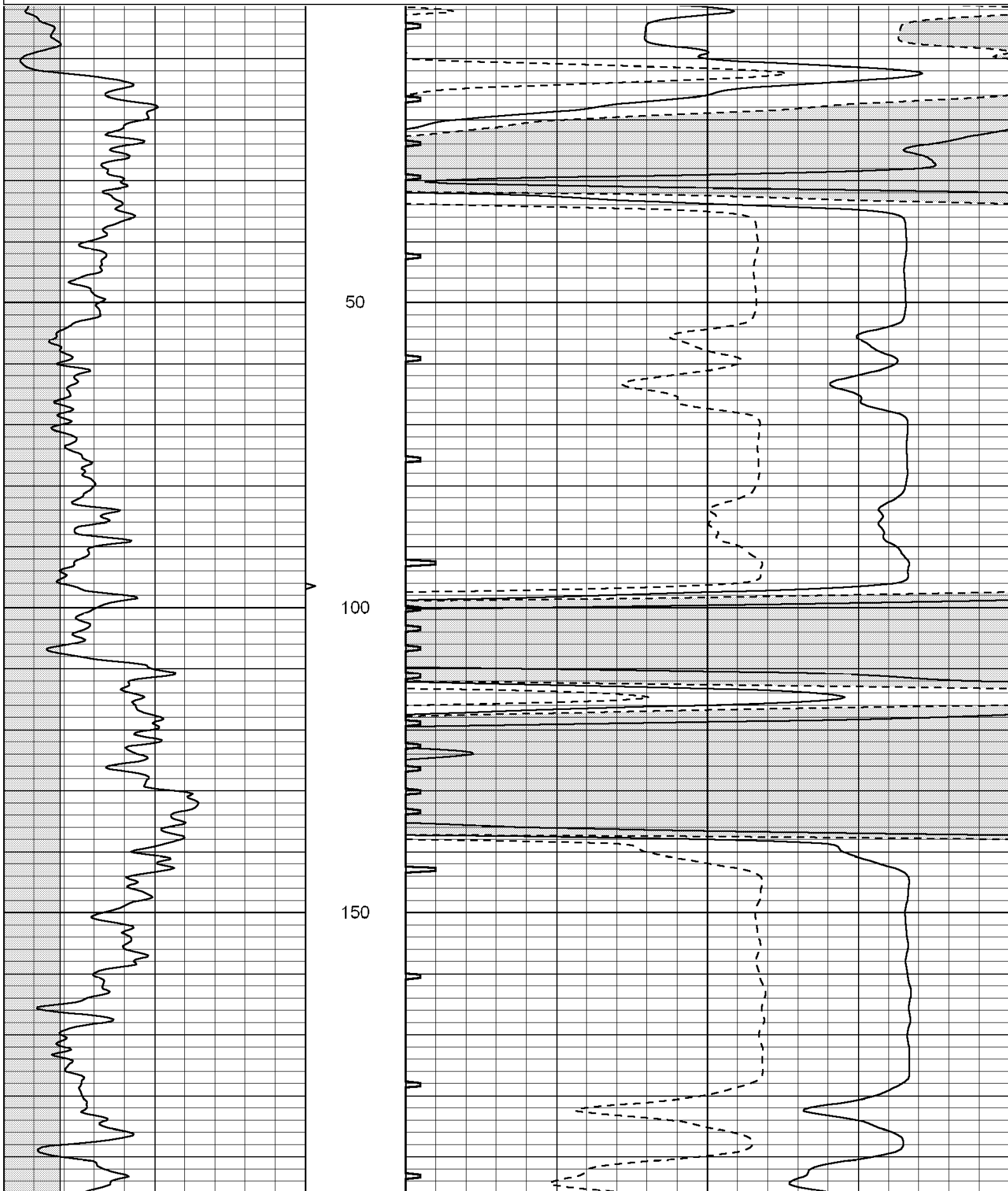
All interpretations are opinions based on inferences from electrical or other measurements and we cannot and do not guarantee the accuracy or correctness of any interpretation, and we shall not, except in the case of gross or willful negligence on our part, be liable or responsible for any loss, costs, damages, or expenses incurred or sustained by anyone resulting from any interpretation made by any of our officers, agents or employees. These interpretations are also subject to our general terms and conditions set out in our current Price Schedule.

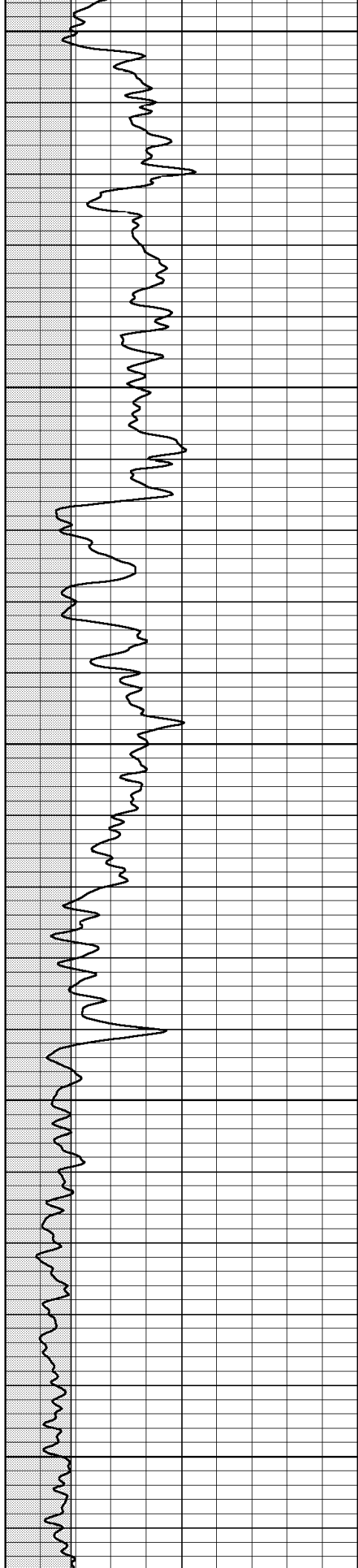
**Comments**

THANK YOU FOR USING SUPERIOR WELL SERVICES  
HAYS, KS. 785-628-6395

DIRECTIONS: WALDO; 2 MILES EAST, 1/2 MILE NORTH, EAST INTO

0	GAMMA RAY (GAPI)	150	ABHV	140	DELTA TIME (usec/ft)	40
6	CALIPER (in)	16	10 (ft3) 0	30	SONIC POROSITY (pu)	-10
			TBHV	0	ITT (msec)	20
			0 (ft3) 10			





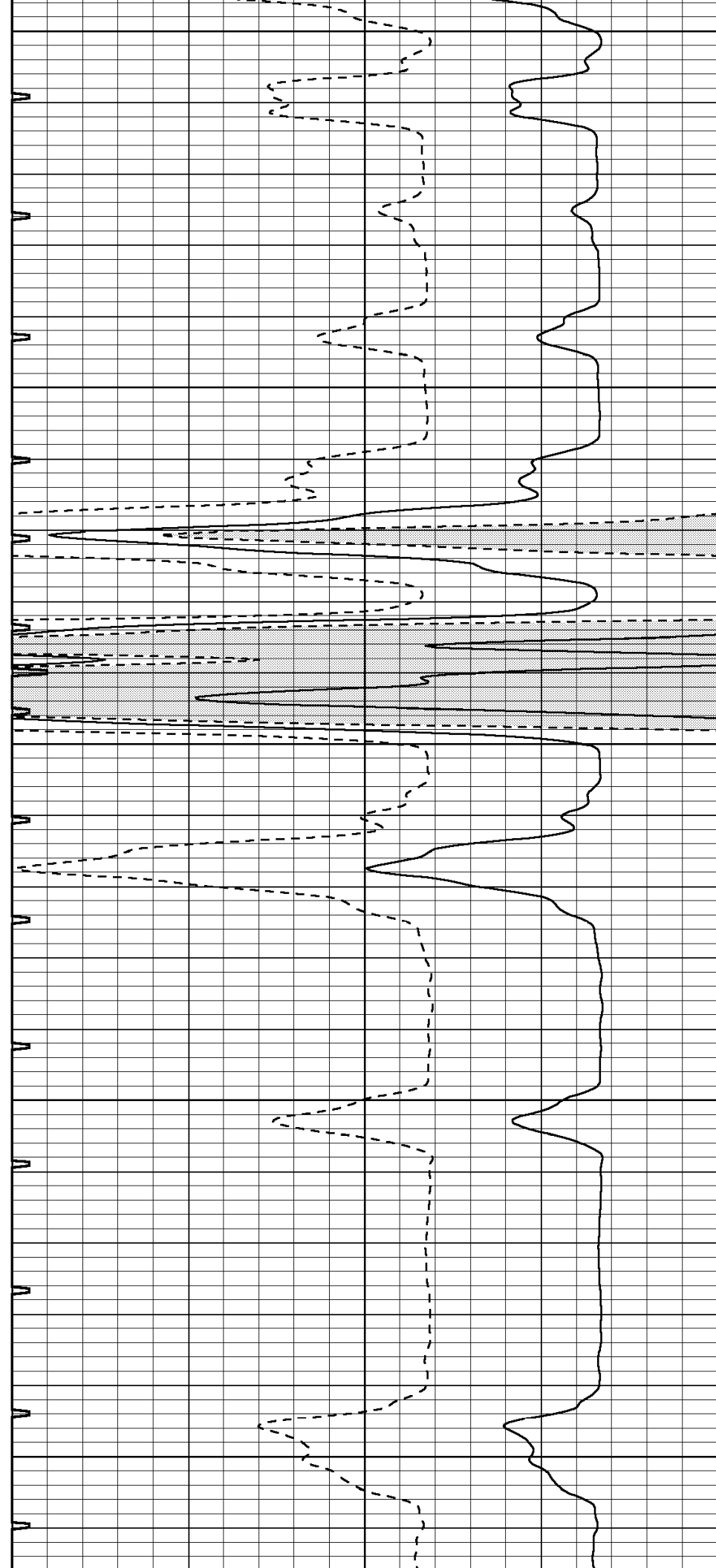
200

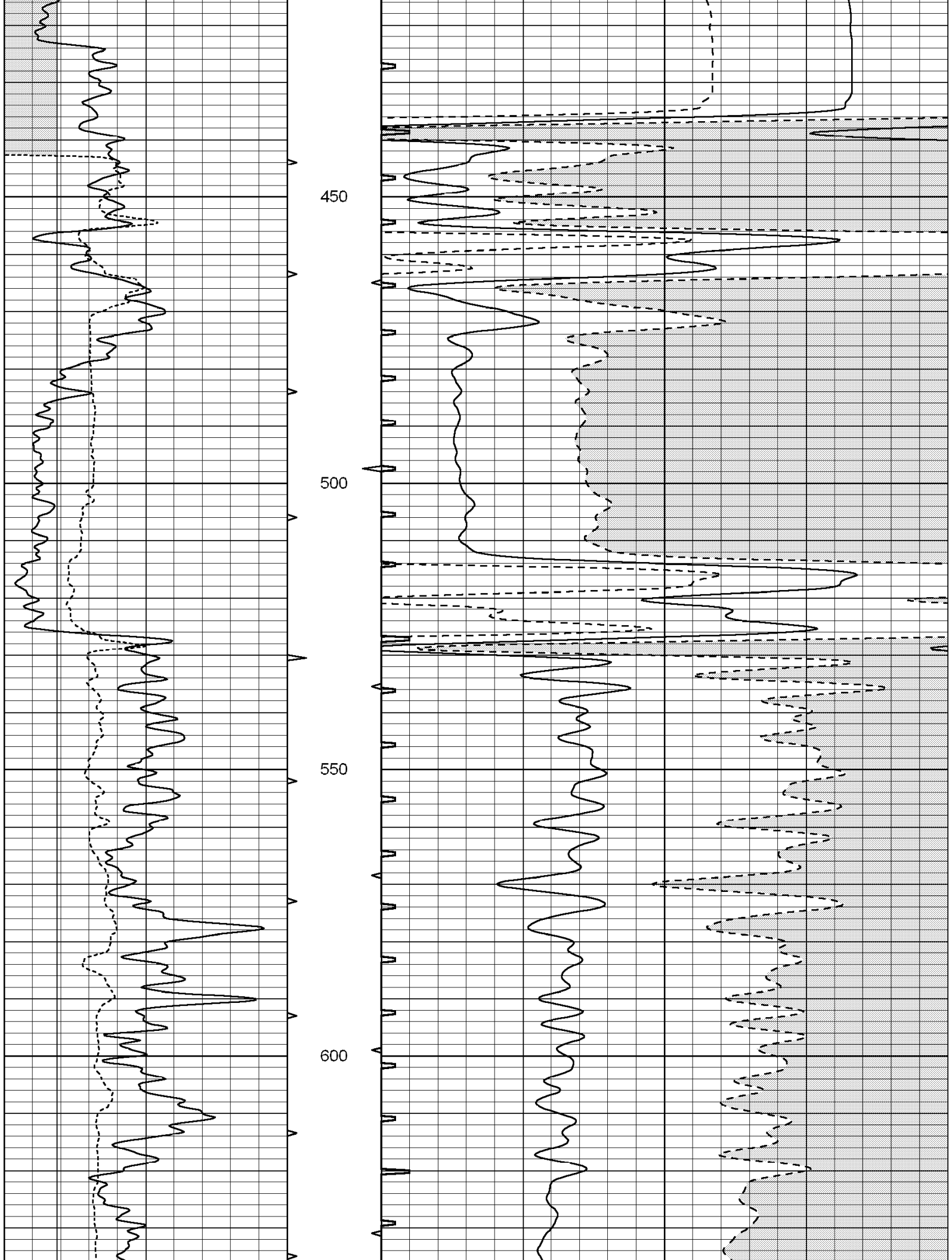
250

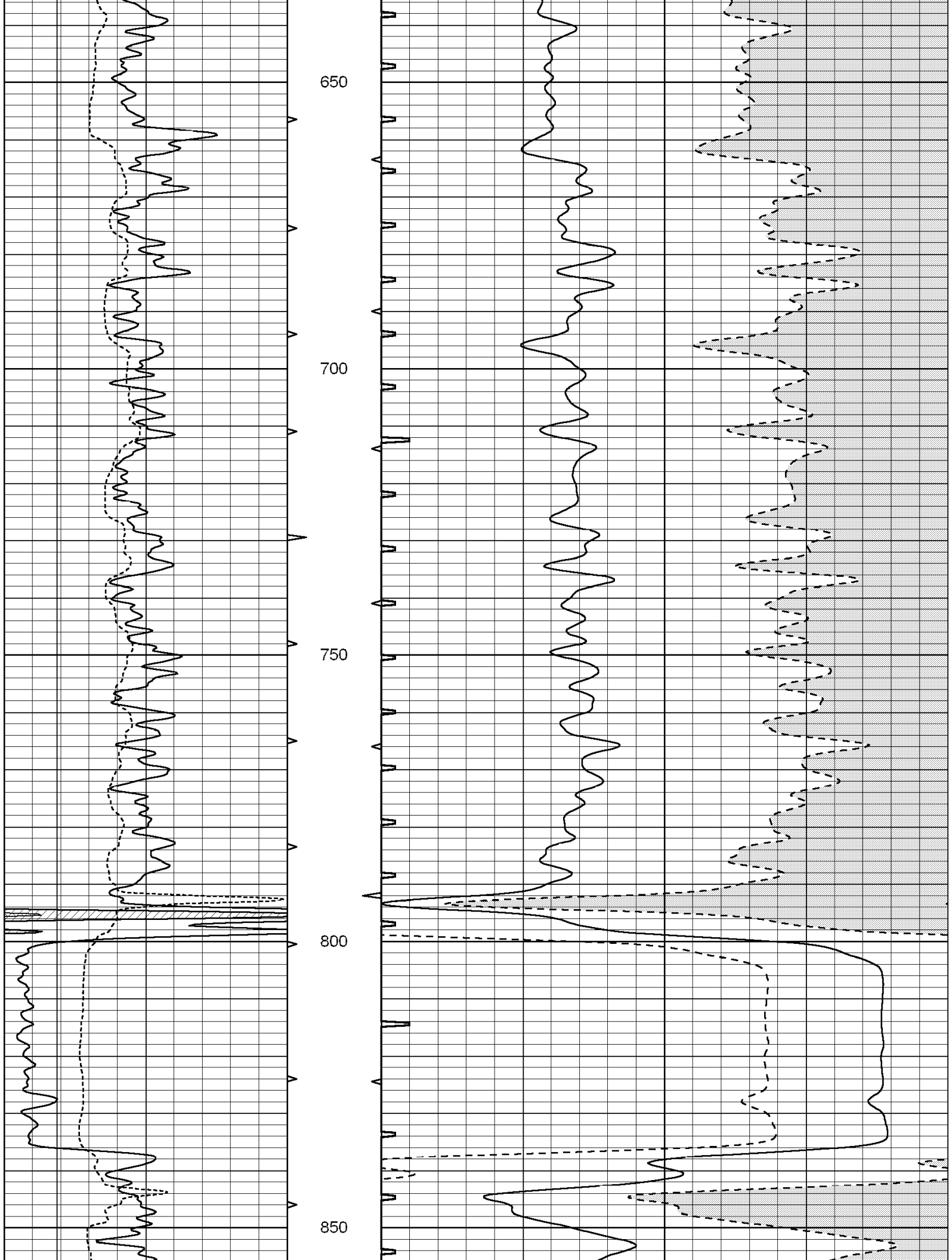
300

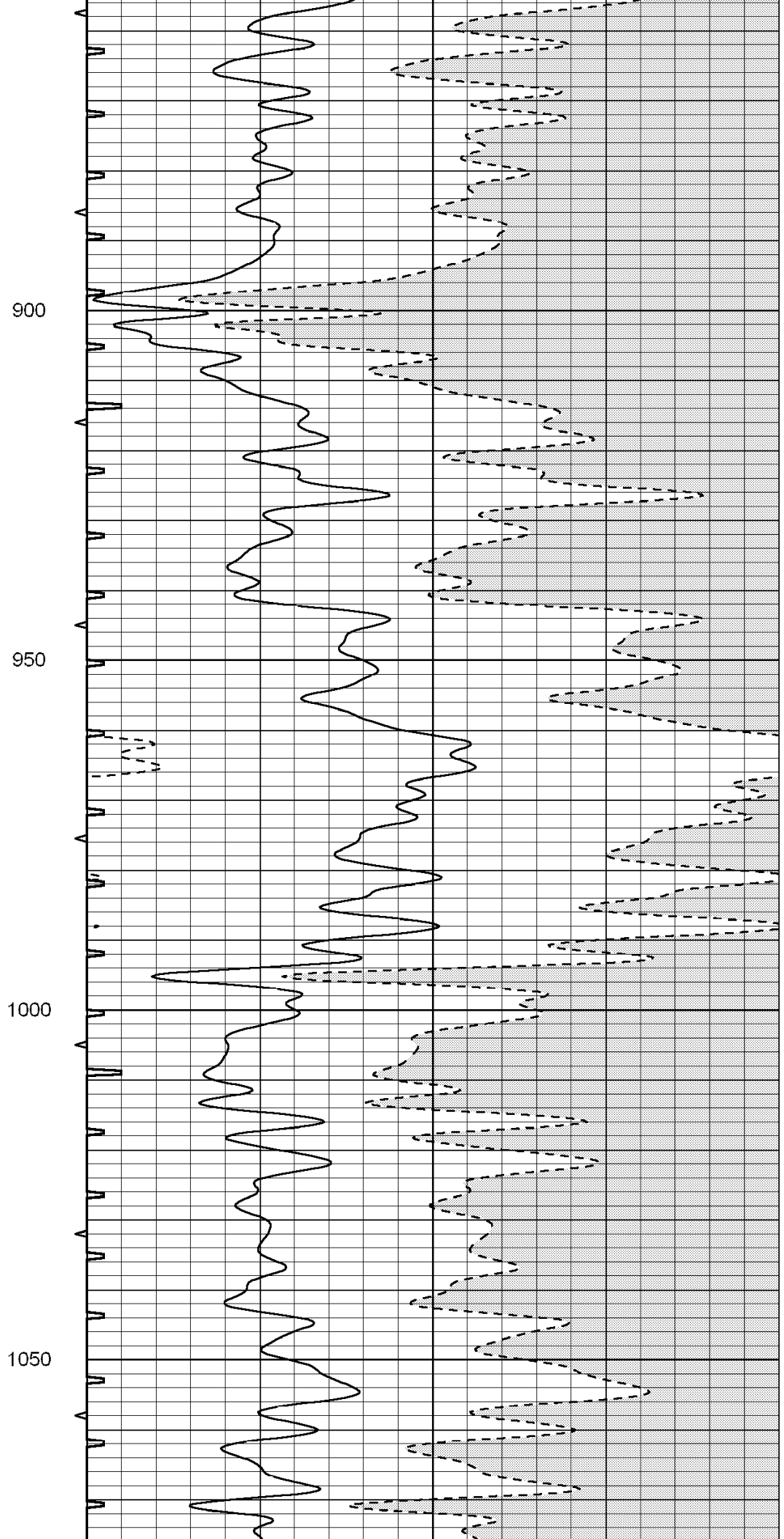
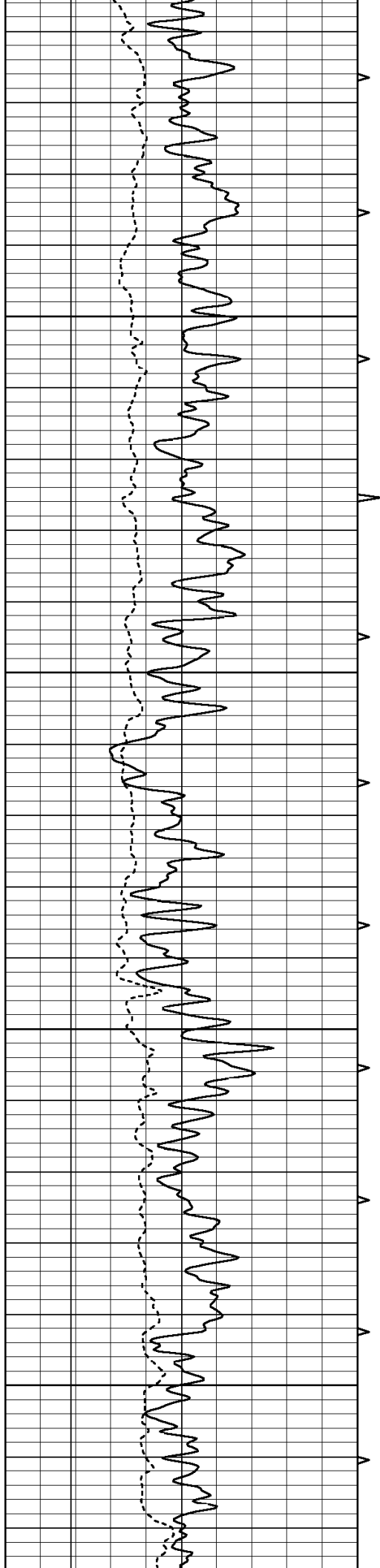
350

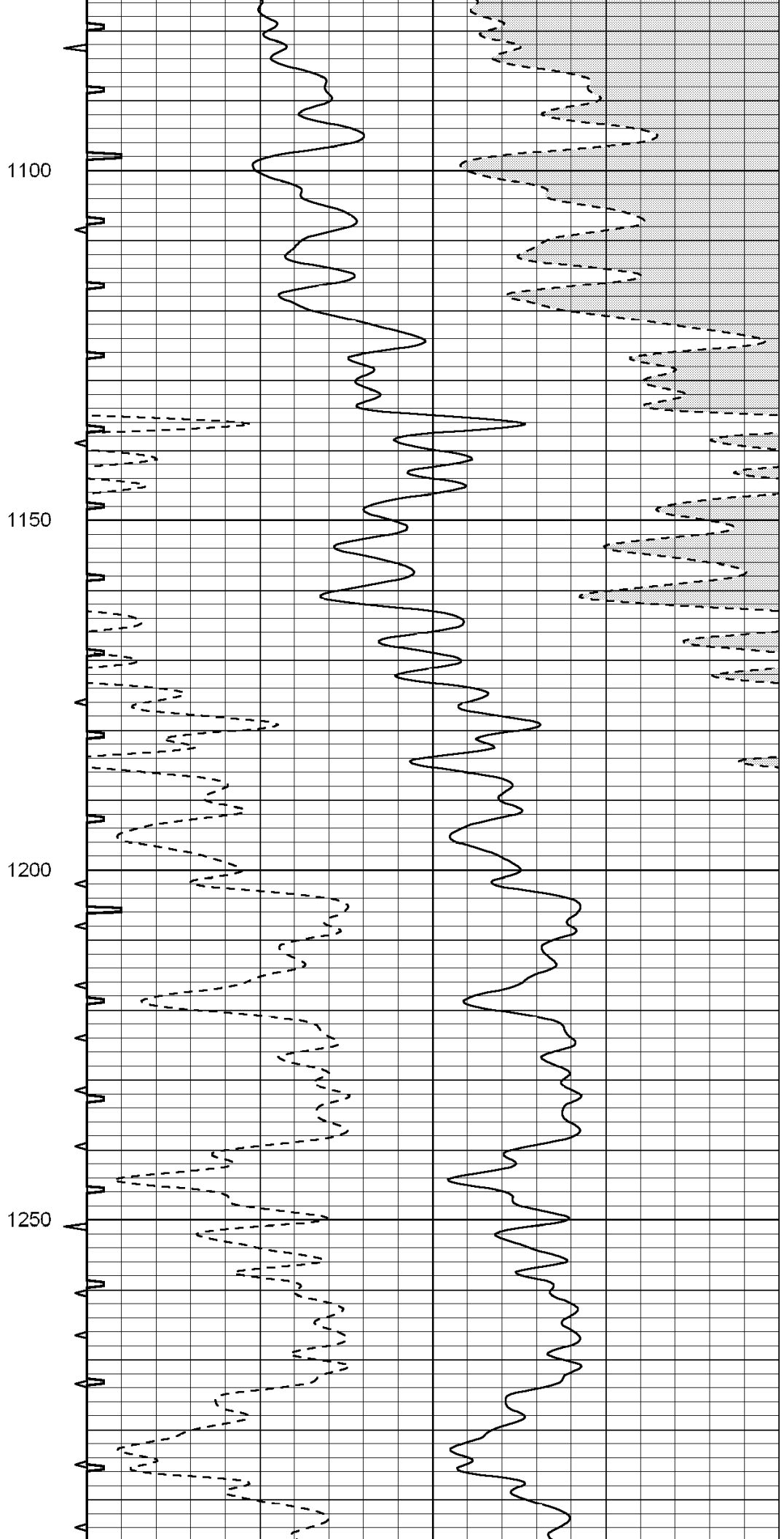
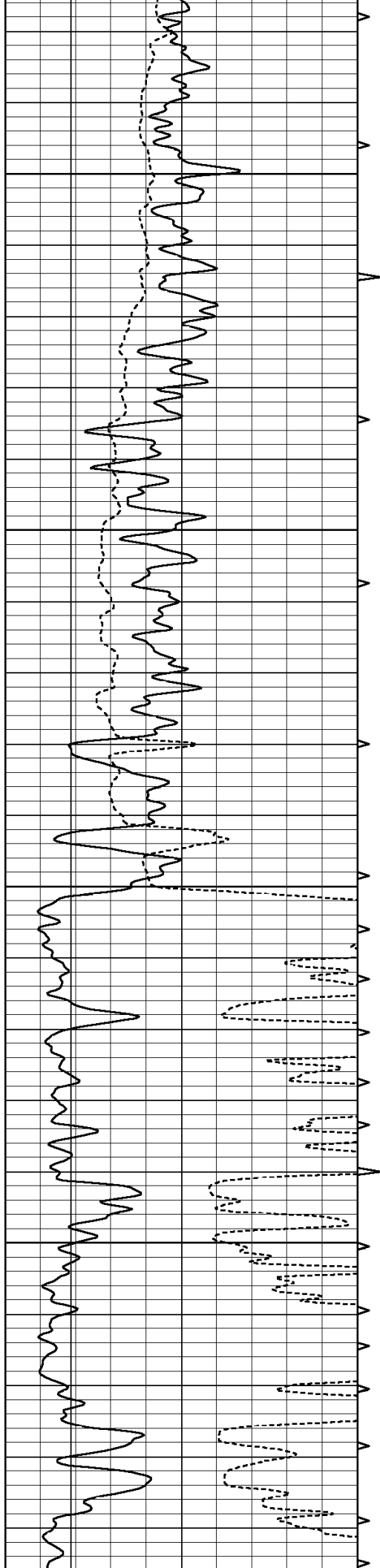
400

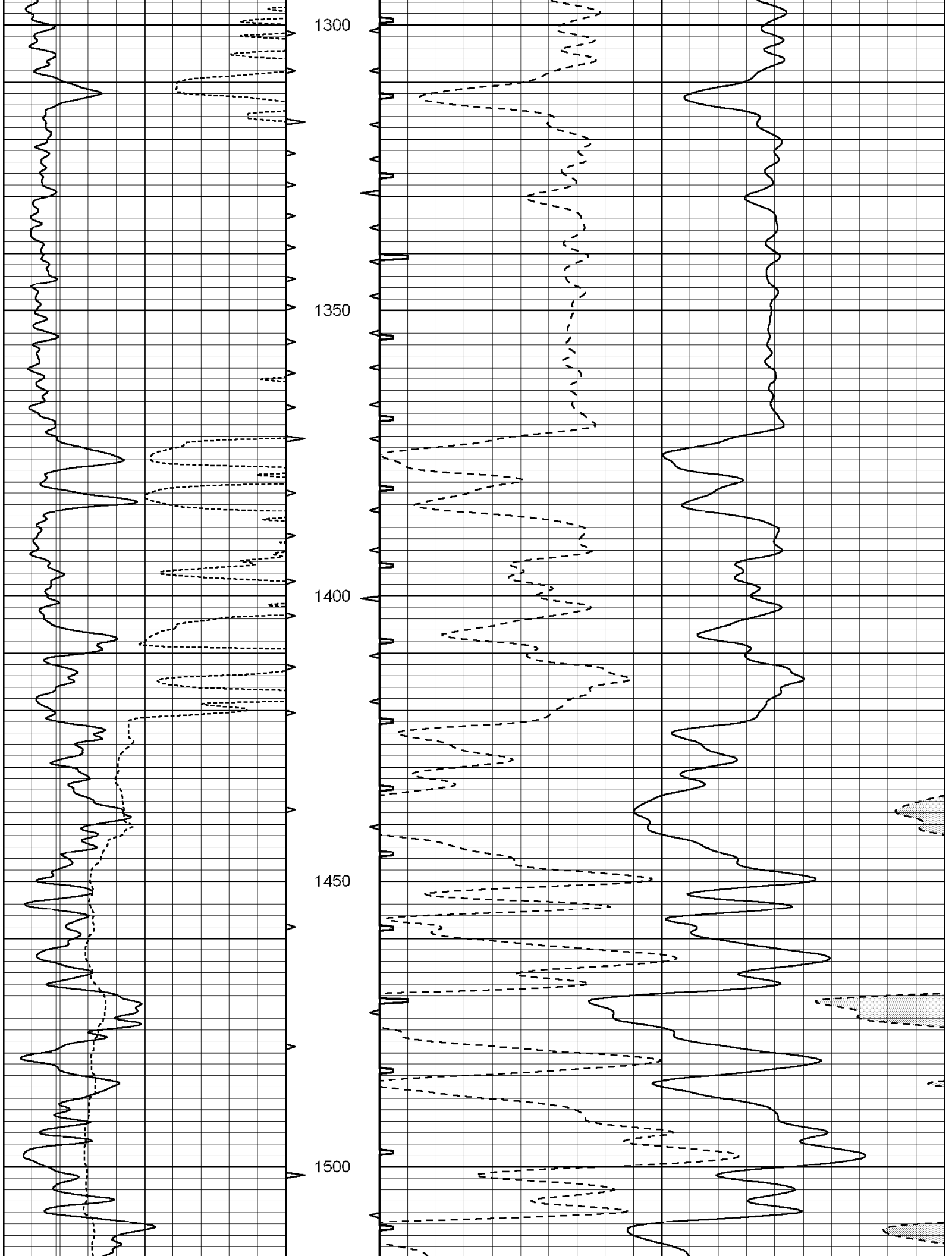


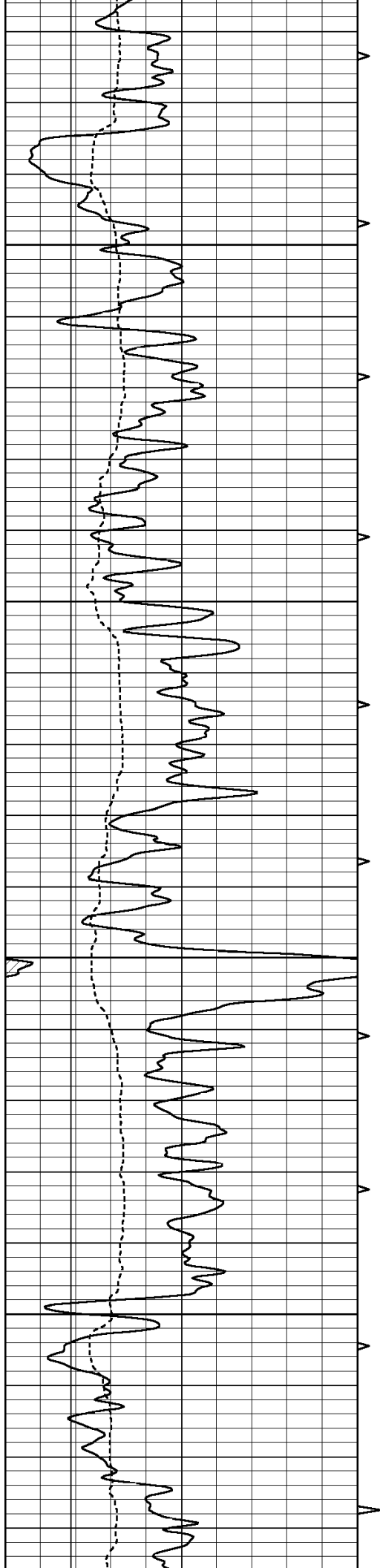










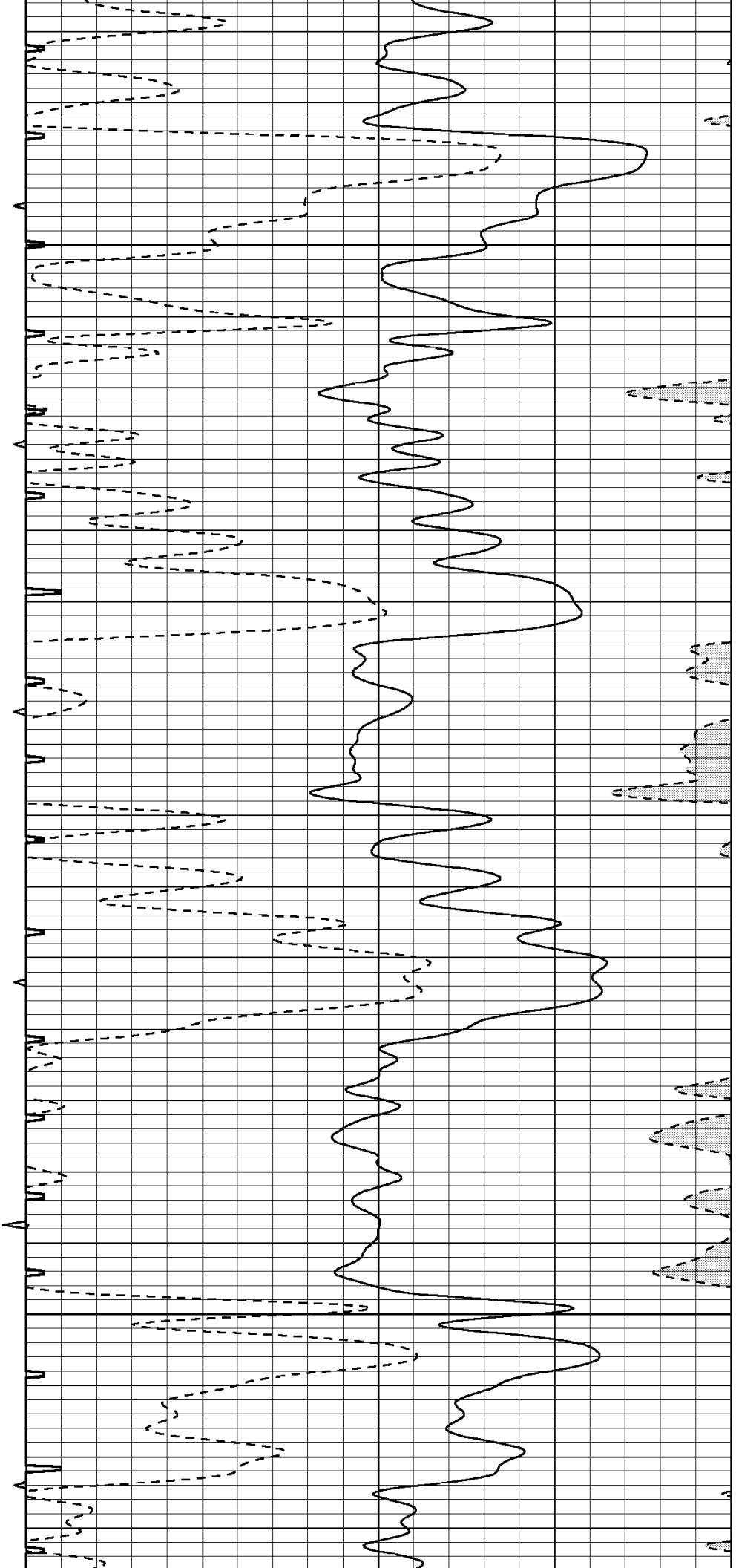


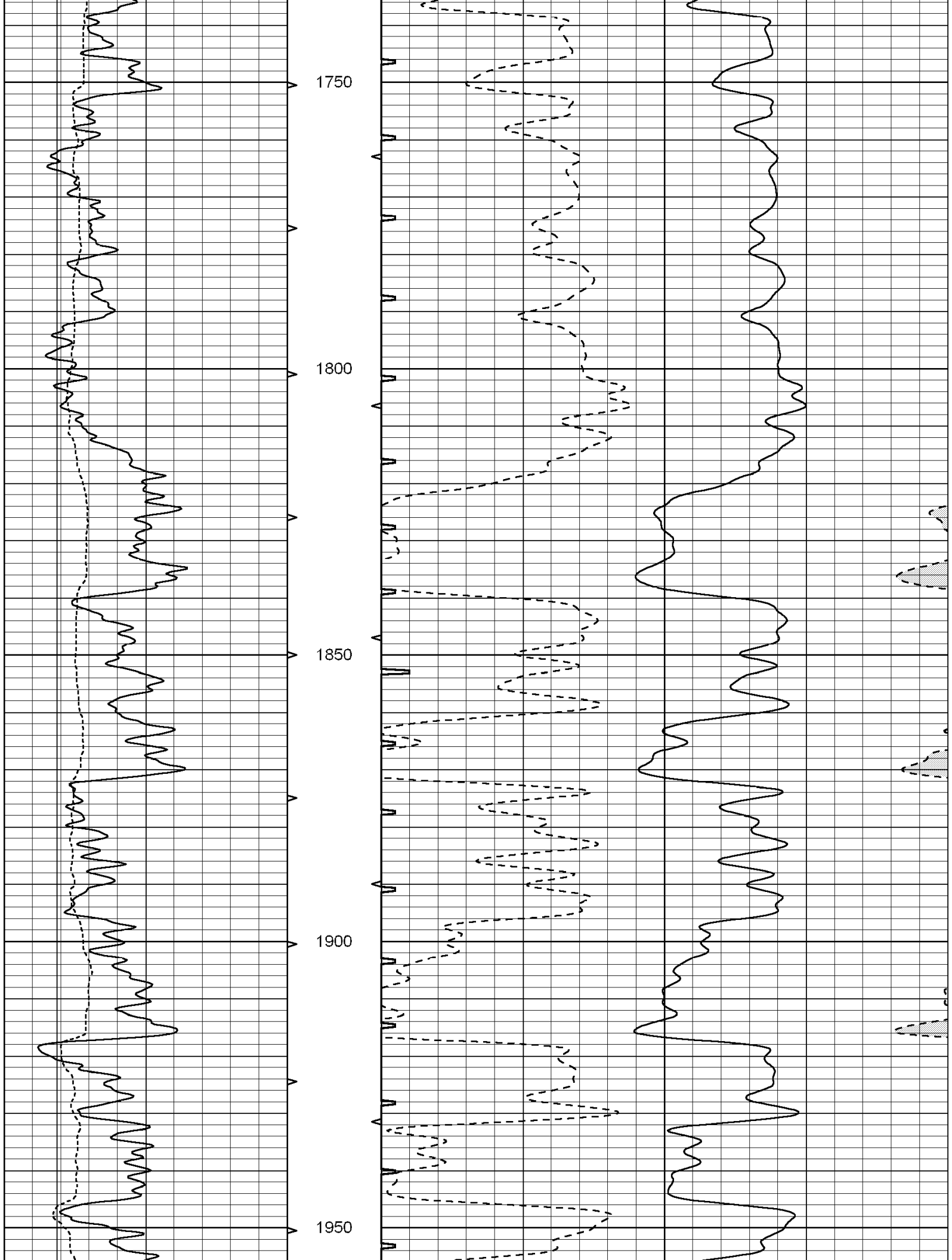
1550

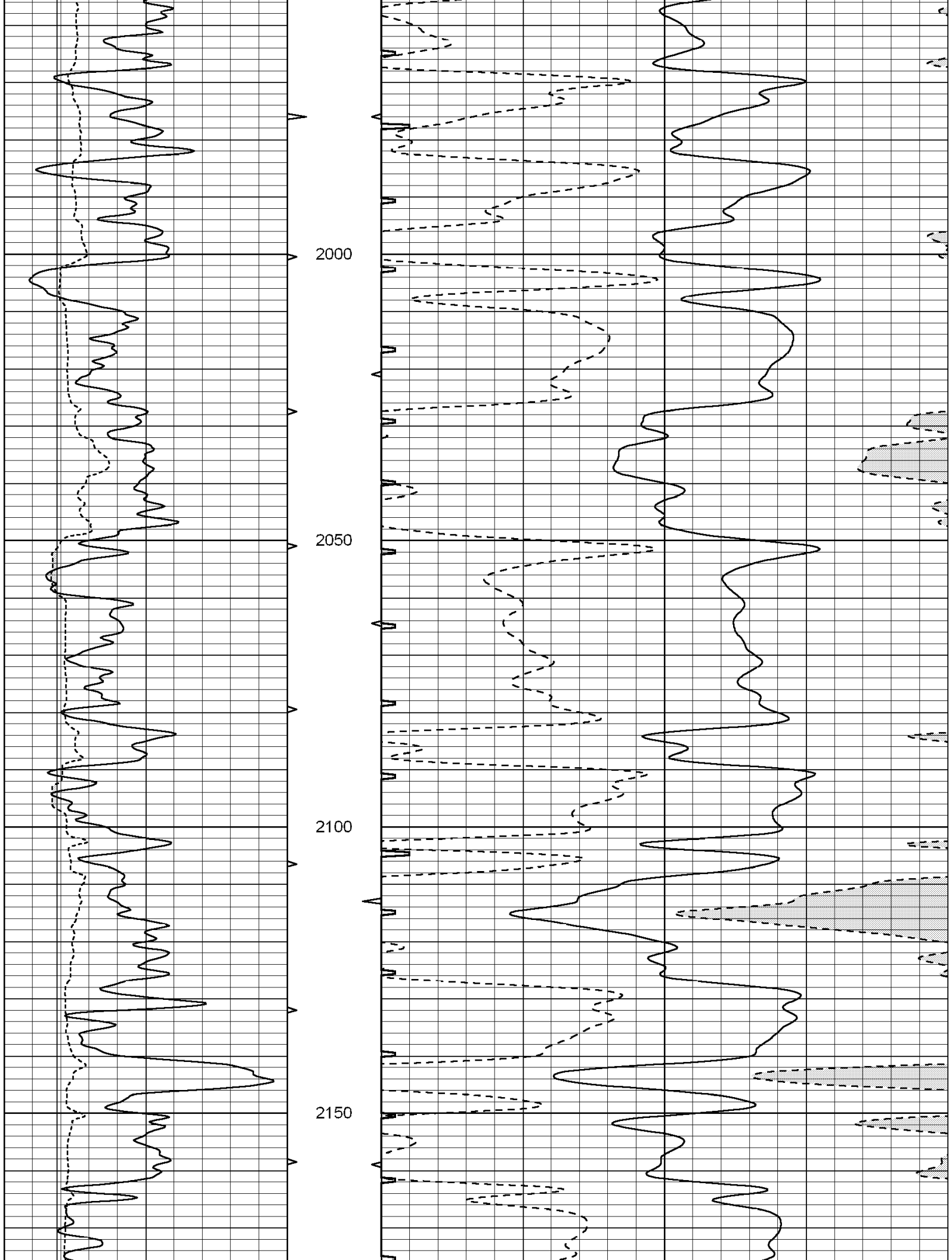
1600

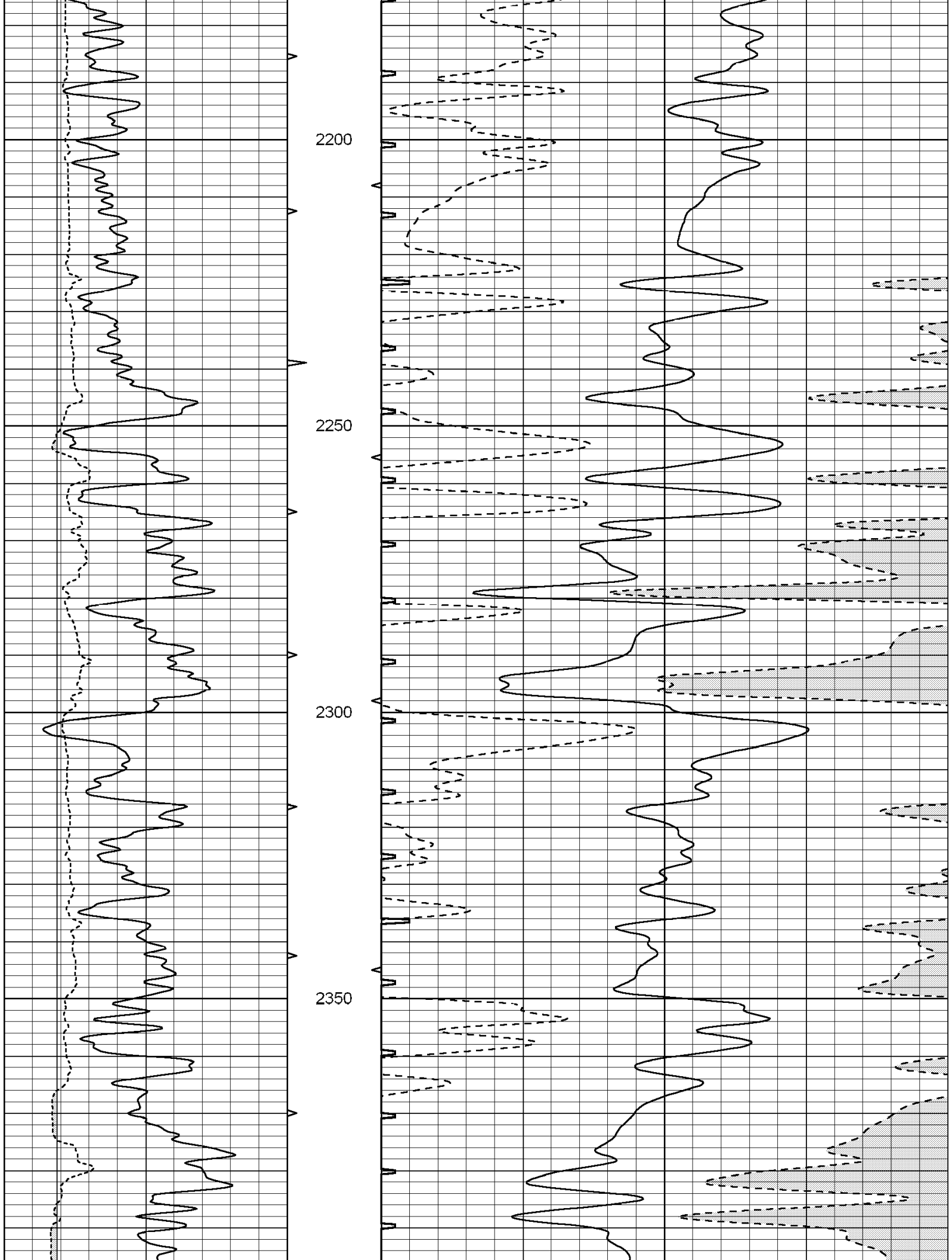
1650

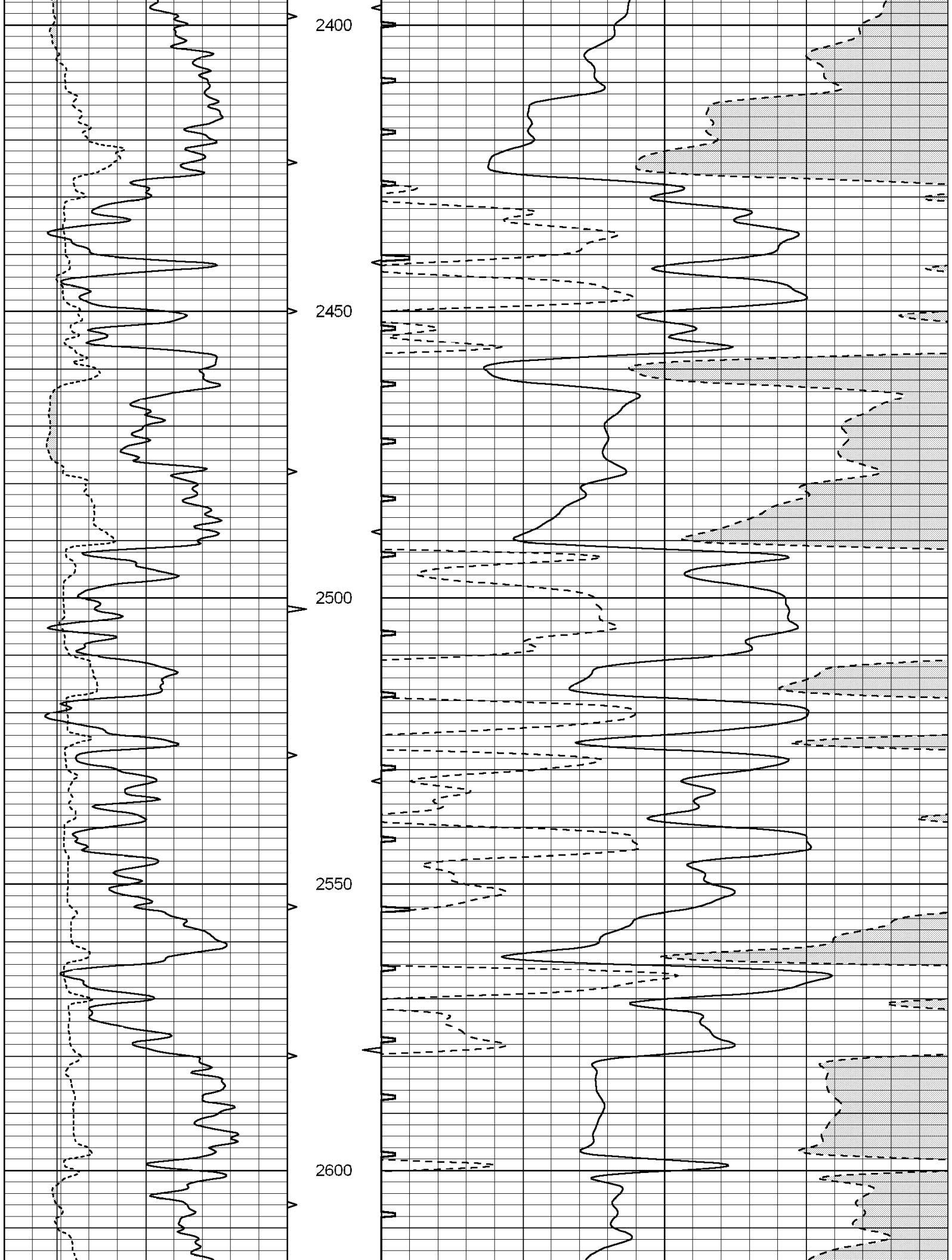
1700

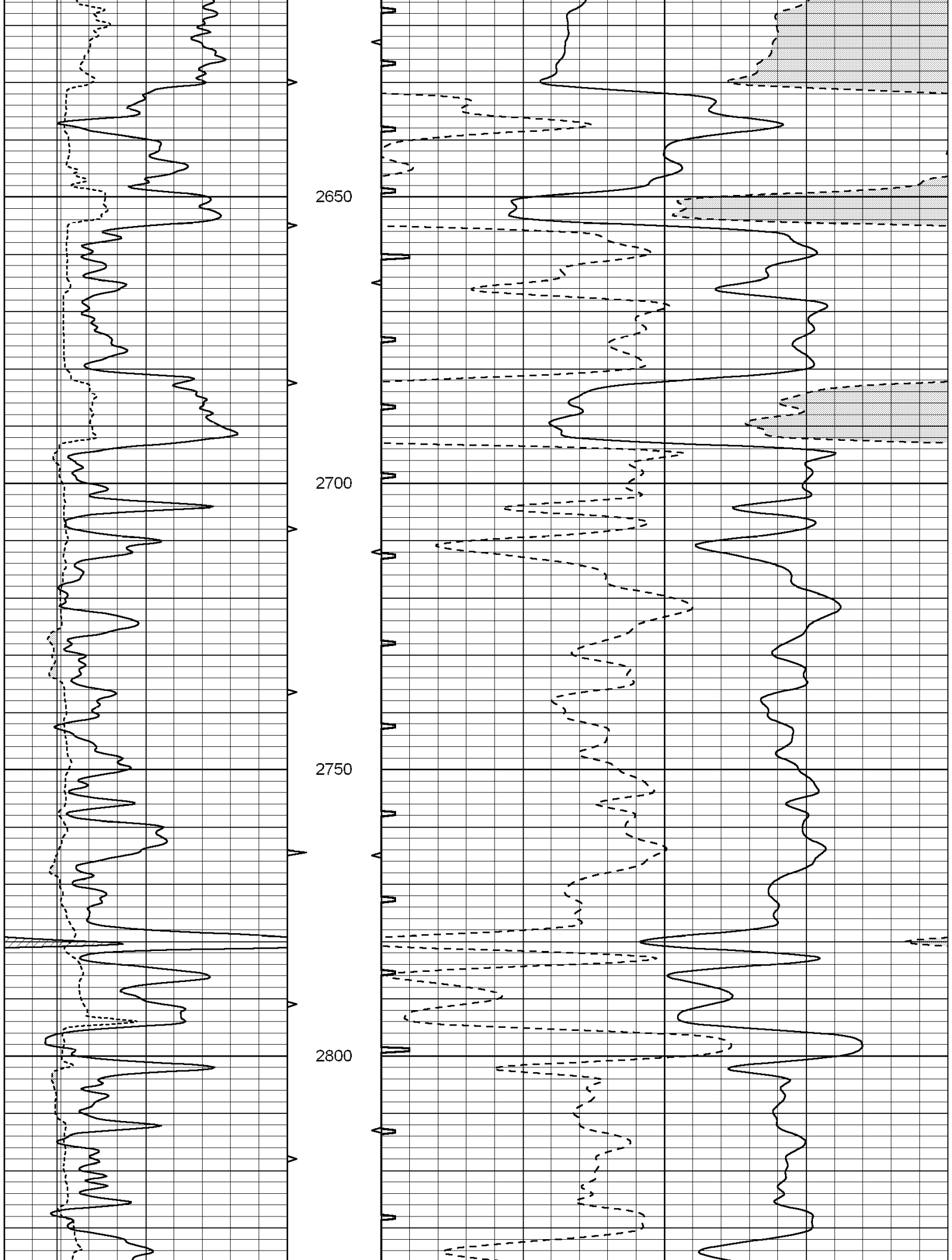


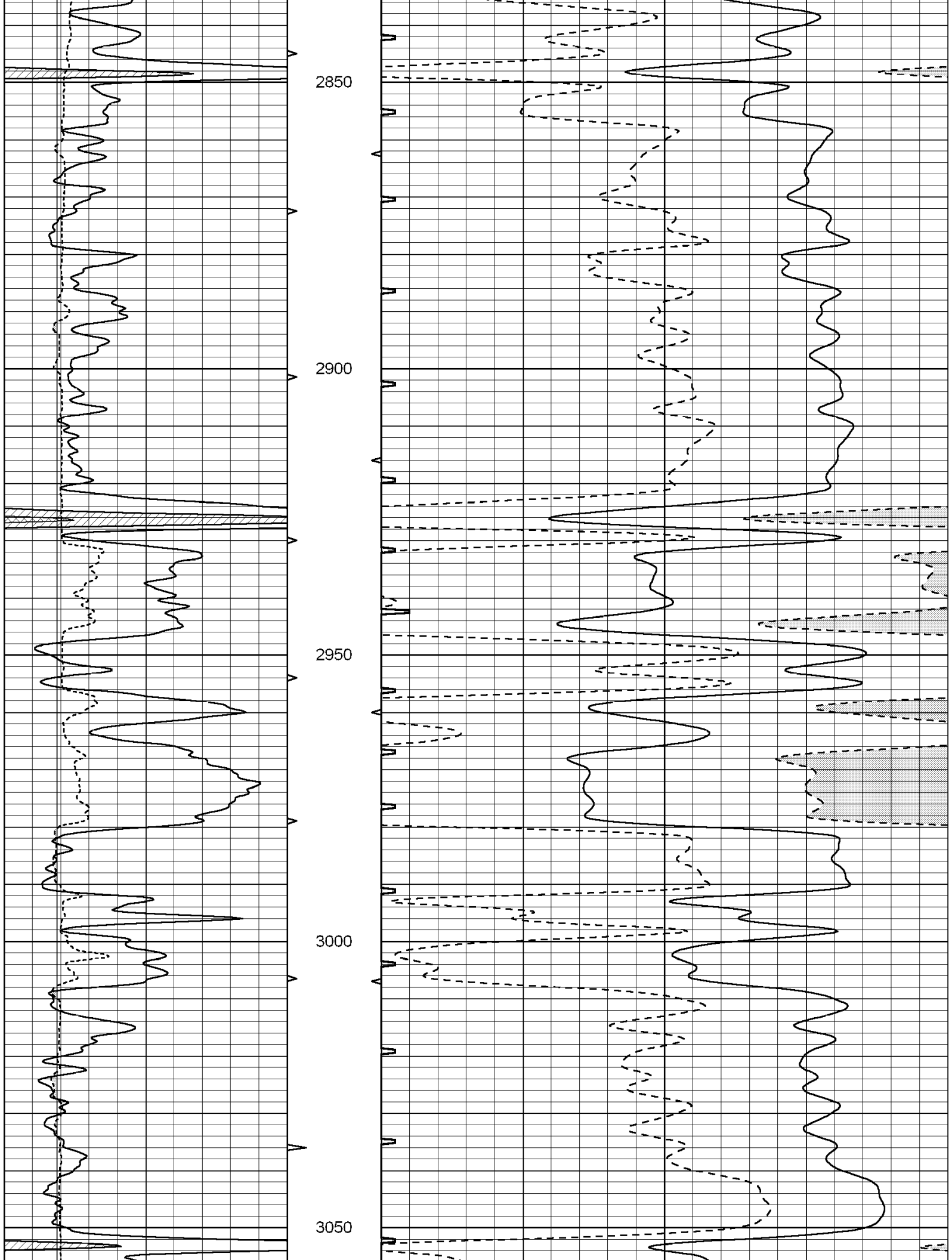


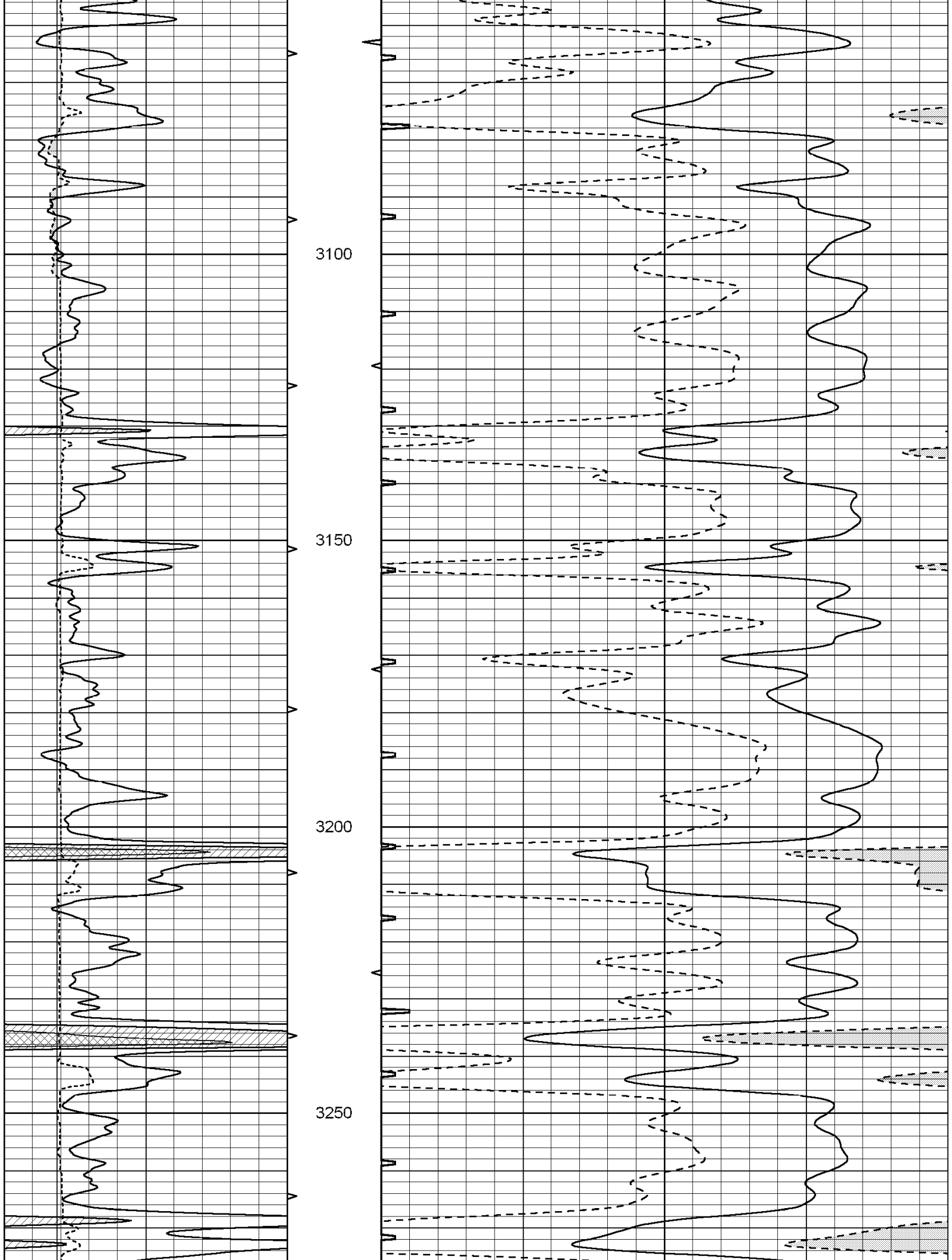


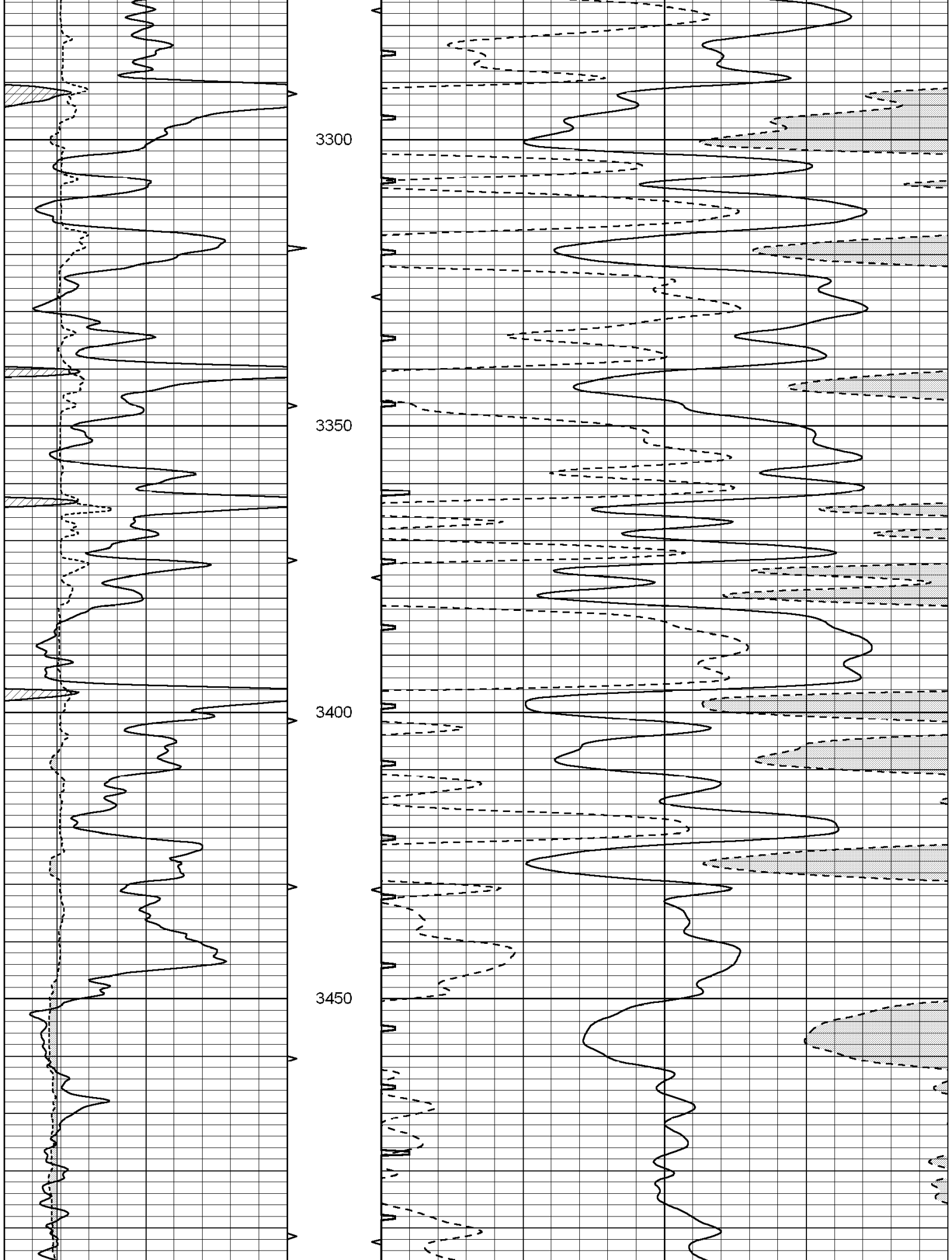


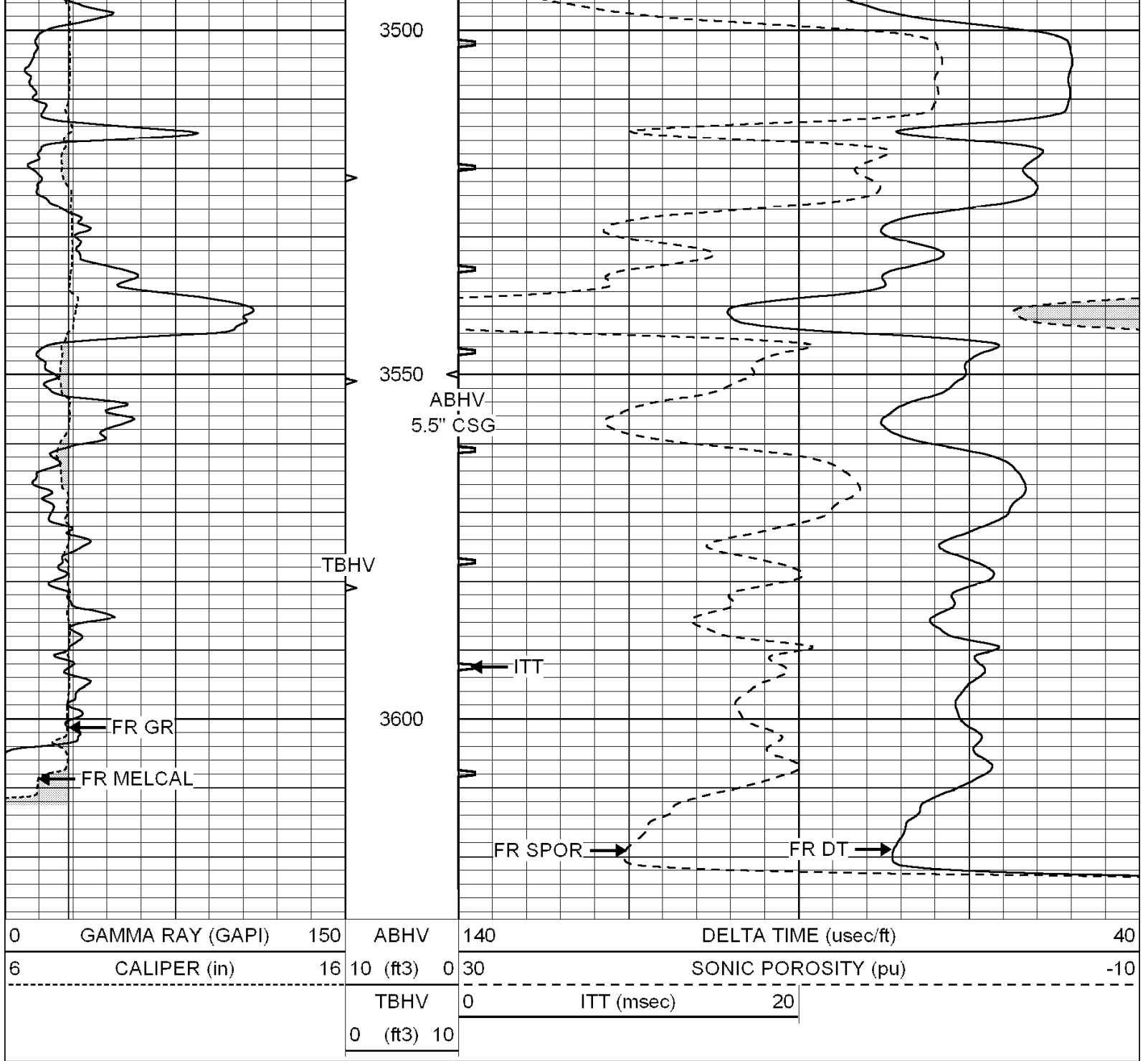












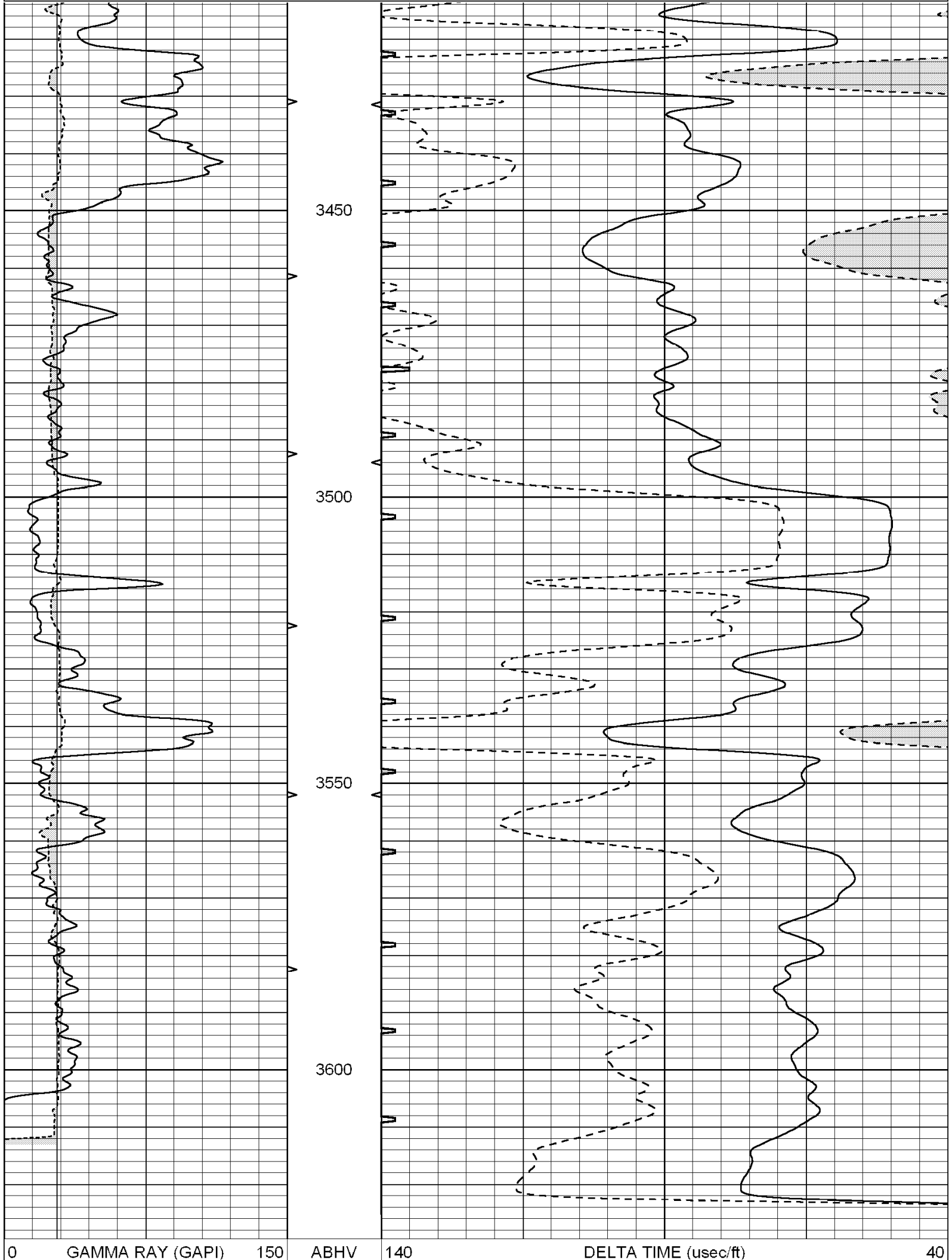
0	GAMMA RAY (GAPI)	150	ABHV	140	DELTA TIME (usec/ft)	40
6	CALIPER (in)	16	10 (ft3) 0	30	SONIC POROSITY (pu)	-10
			TBHV	0	ITT (msec)	20
			0 (ft3) 10			



# REPEAT SECTION

Database File: 003705ddn.db  
 Dataset Pathname: pass5.2  
 Presentation Format: \_slt  
 Dataset Creation: Wed Apr 08 18:02:44 2009 by Calc Open-Cased 070814  
 Charted by: Depth in Feet scaled 1:240

0	GAMMA RAY (GAPI)	150	ABHV	140	DELTA TIME (usec/ft)	40
6	CALIPER (in)	16	10 (ft3) 0	30	SONIC POROSITY (pu)	-10
			TBHV	0	ITT (msec)	20
			0 (ft3) 10			



6	CALIPER (in)	16	10 (ft3)	0	30	SONIC POROSITY (pu)	-10
			TBHV	0	ITT (msec)	20	
			0 (ft3)	10			