



**SUPERIOR**  
Hays,  
Kansas

**MICRO  
LOG**

Company ABARTA OIL & GAS CO. INC.  
Well ANCHOR CATTLE #1  
Field CLARK  
County LANE  
State KANSAS

Company ABARTA OIL AND GAS COMPANY INC.  
Well ANCHOR CATTLE #1  
Field CLARK  
County LANE State KANSAS

Location: API #: 15-101-22154-0000  
1712'FSL & 830'FWL  
NW-SE-NW-SW  
SEC 18 TWP 19S RGE 29W  
Permanent Datum GROUND LEVEL Elevation 2857  
Log Measured From KELLY BUSHING 5' A.G.L.  
Drilling Measured From KELLY BUSHING  
Other Services  
CDL/CNL  
DIL/SONIC  
Elevation  
K.B. 2862  
D.F. 2860  
G.L. 2857

Date	26 FEB 09		
Run Number	ONE		
Depth Driller	4663		
Depth Logger	4663		
Bottom Logged Interval	4646		
Top Log Interval	2500		
Casing Driller	8 5/8 @ 349'		
Casing Logger	348'		
Bit Size	7 7/8		
Type Fluid In Hole	CHEMICAL		
Density / Viscosity	9.4/48	CHLORIDES 3000	
pH / Fluid Loss	9.3/8.8		
Source of Sample	FLOWLINE		
Rm @ Meas. Temp	1.35 @ 77F		
Rmf @ Meas. Temp	1.01 @ 77F		
Rmc @ Meas. Temp	1.62 @ 77F		
Source of Rmf / Rmc	CAL/CAL		
Rm @ BHT	0.85 @ 122F		
Time Circulation Stopped	2 HOURS		
Time Logger on Bottom	7:00 PM		
Maximum Recorded Temperature	122F		
Equipment Number	680		
Location	HAYS, KS		
Recorded By	JEFF GRONEWEG	JOE CRATHORNE	
Witnessed By	SCOTT ALBERG		

<<< Fold Here >>>

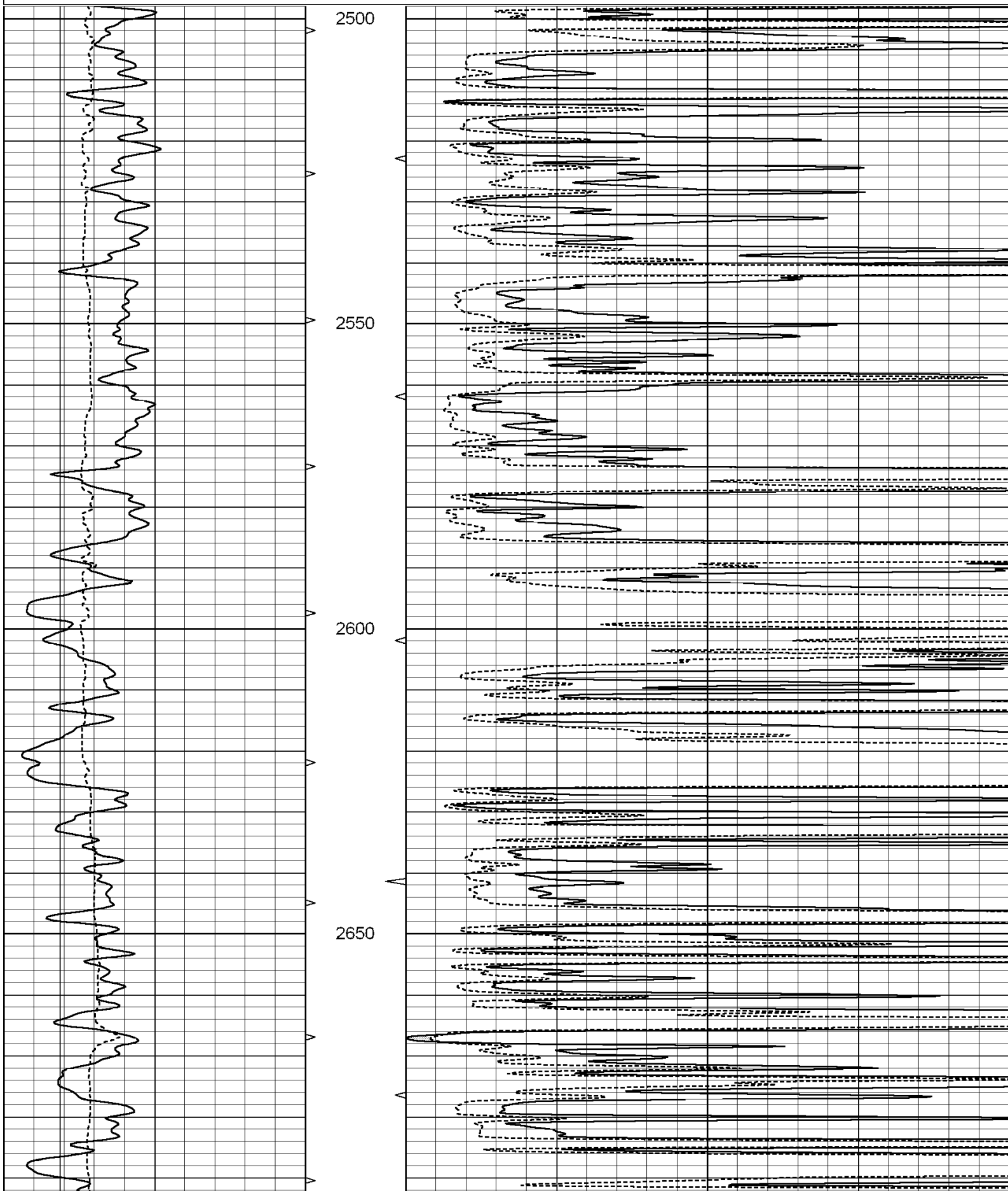
All interpretations are opinions based on inferences from electrical or other measurements and we cannot and do not guarantee the accuracy or correctness of any interpretation, and we shall not, except in the case of gross or willful negligence on our part, be liable or responsible for any loss, costs, damages, or expenses incurred or sustained by anyone resulting from any interpretation made by any of our officers, agents or employees. These interpretations are also subject to our general terms and conditions set out in our current Price Schedule.

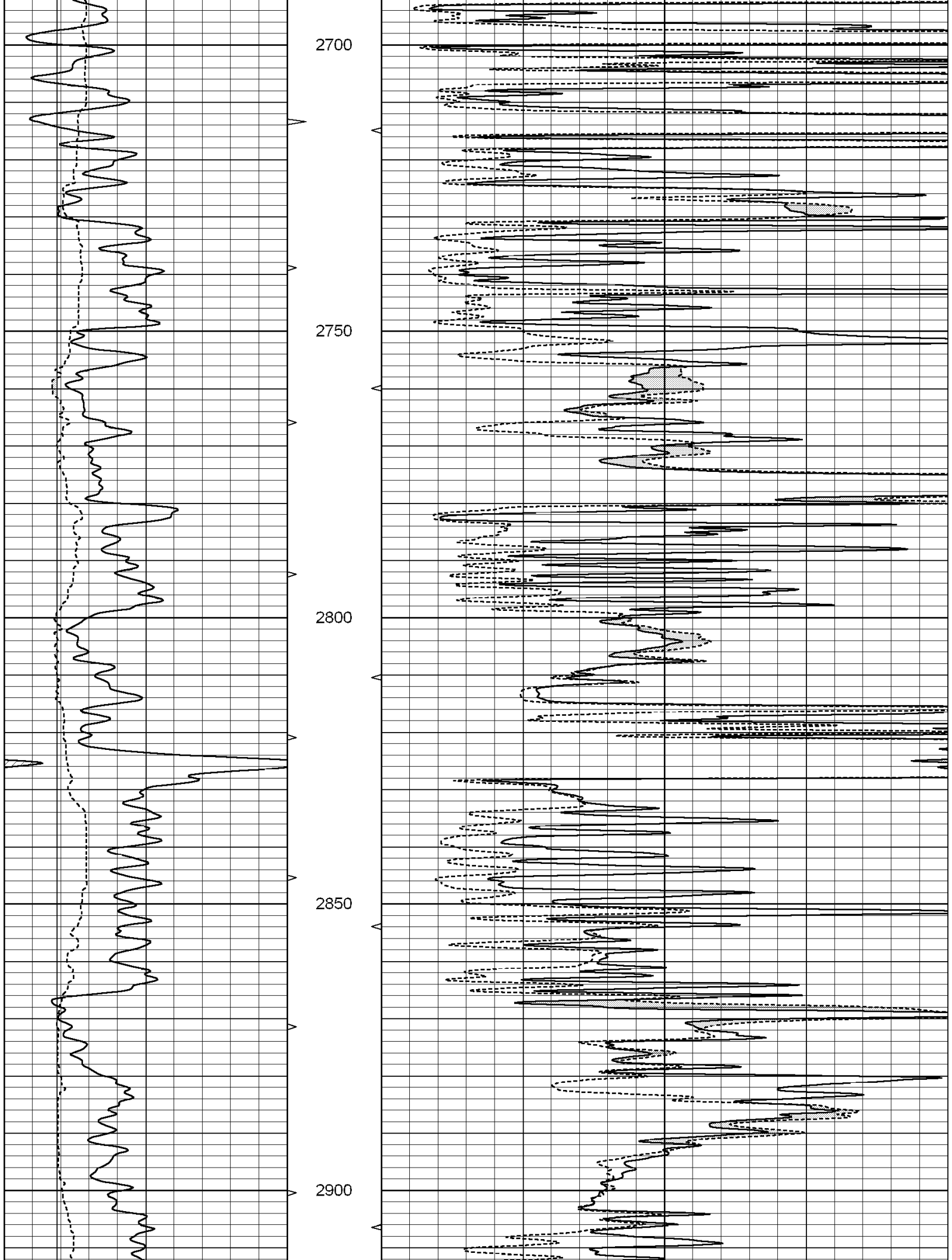
**Comments**

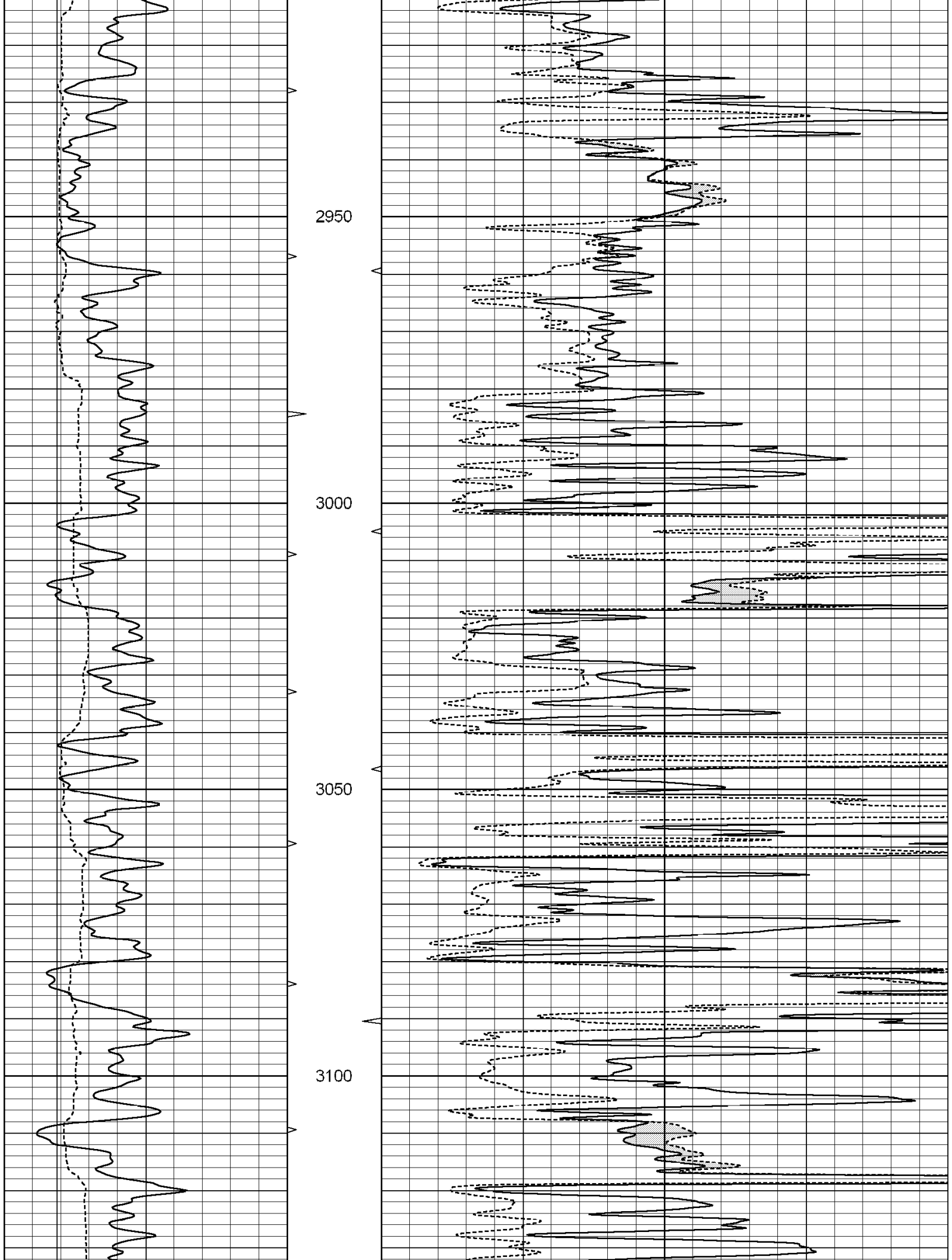
THANK YOU FOR USING SUPERIOR WELL SERVICES  
HAYS, KS. 785-628-6395

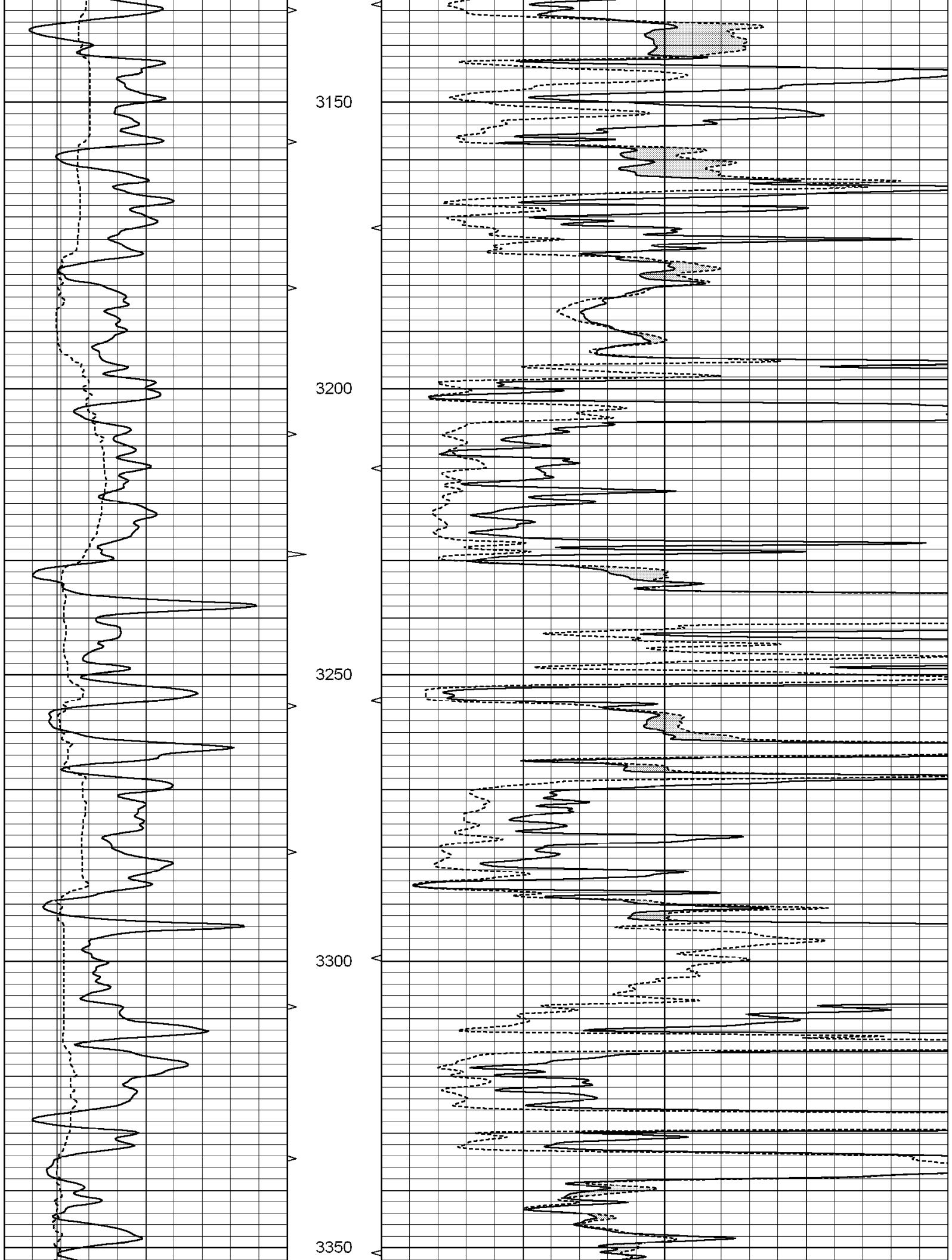
DIRECTIONS: DIGHTON; 6 MILES SOUTH ON HWY 23 TO RD 90, 6 MILES WEST, NORTH INTO

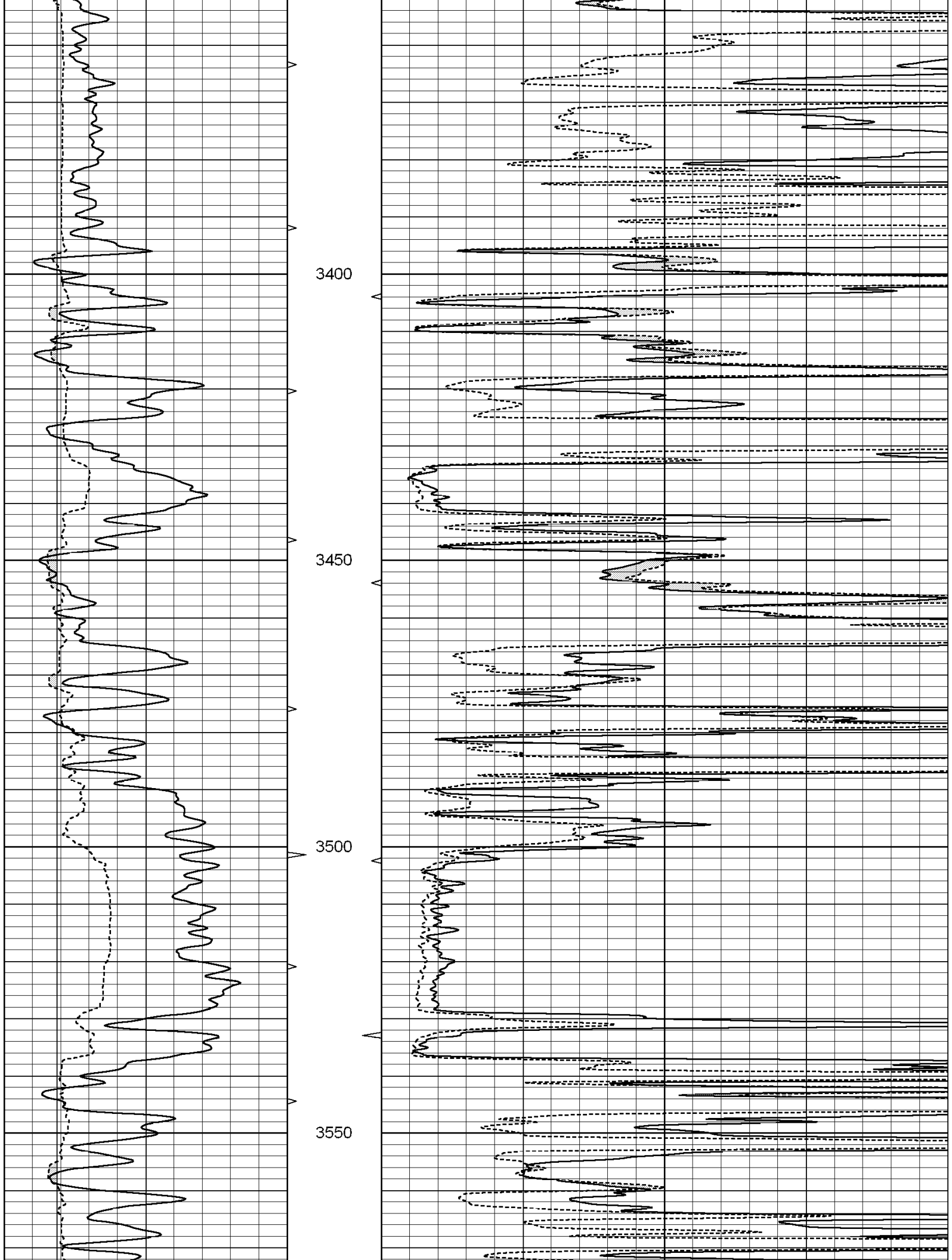
0	GAMMA RAY (GAPI)	150	ABHV	0	MEL1.5 (Ohm-m)	20
6	CALIPER (in)	16	10 (ft3) 0 0	0	MEL2.0 (Ohm-m)	20
			TBHV			
			0 (ft3) 10			

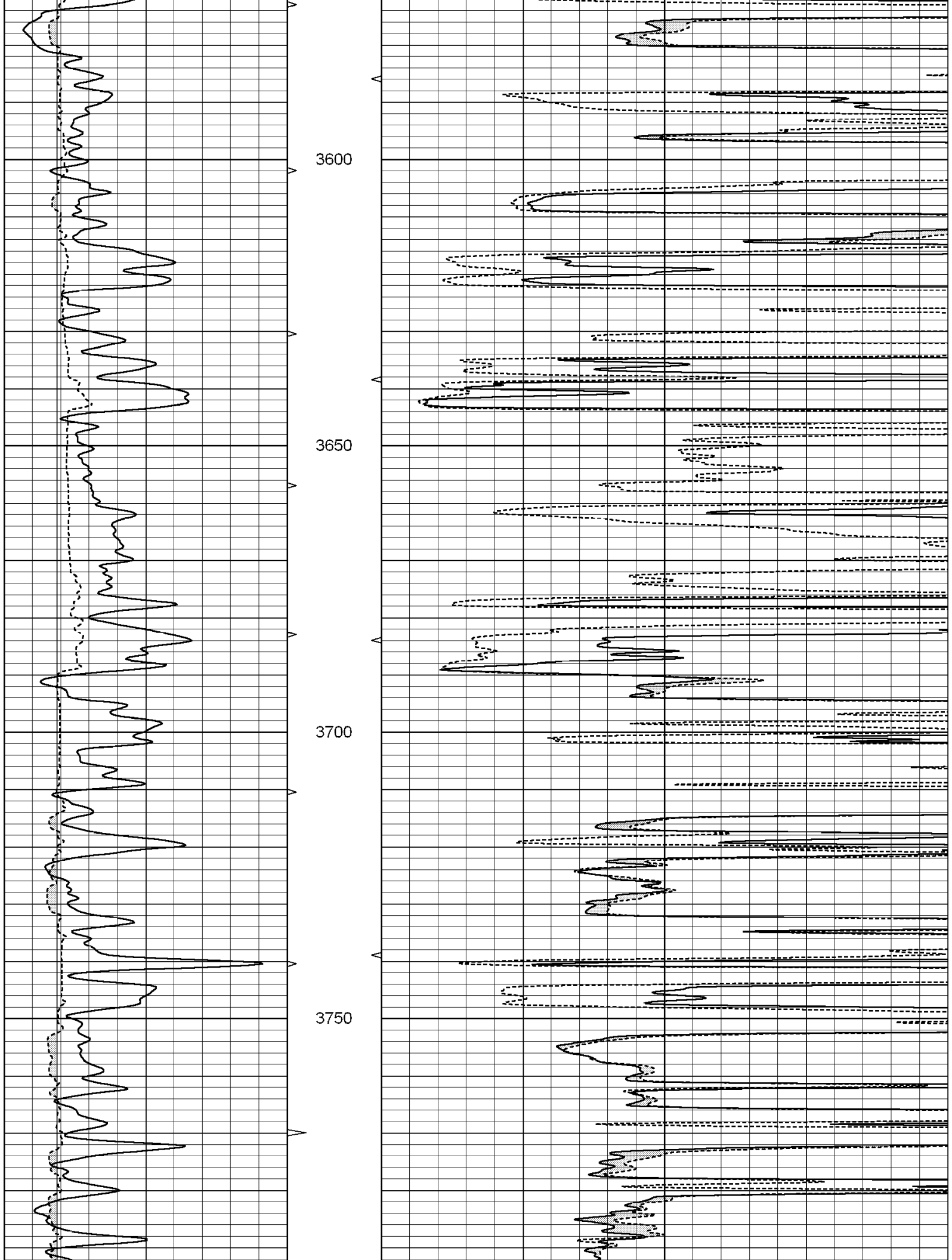


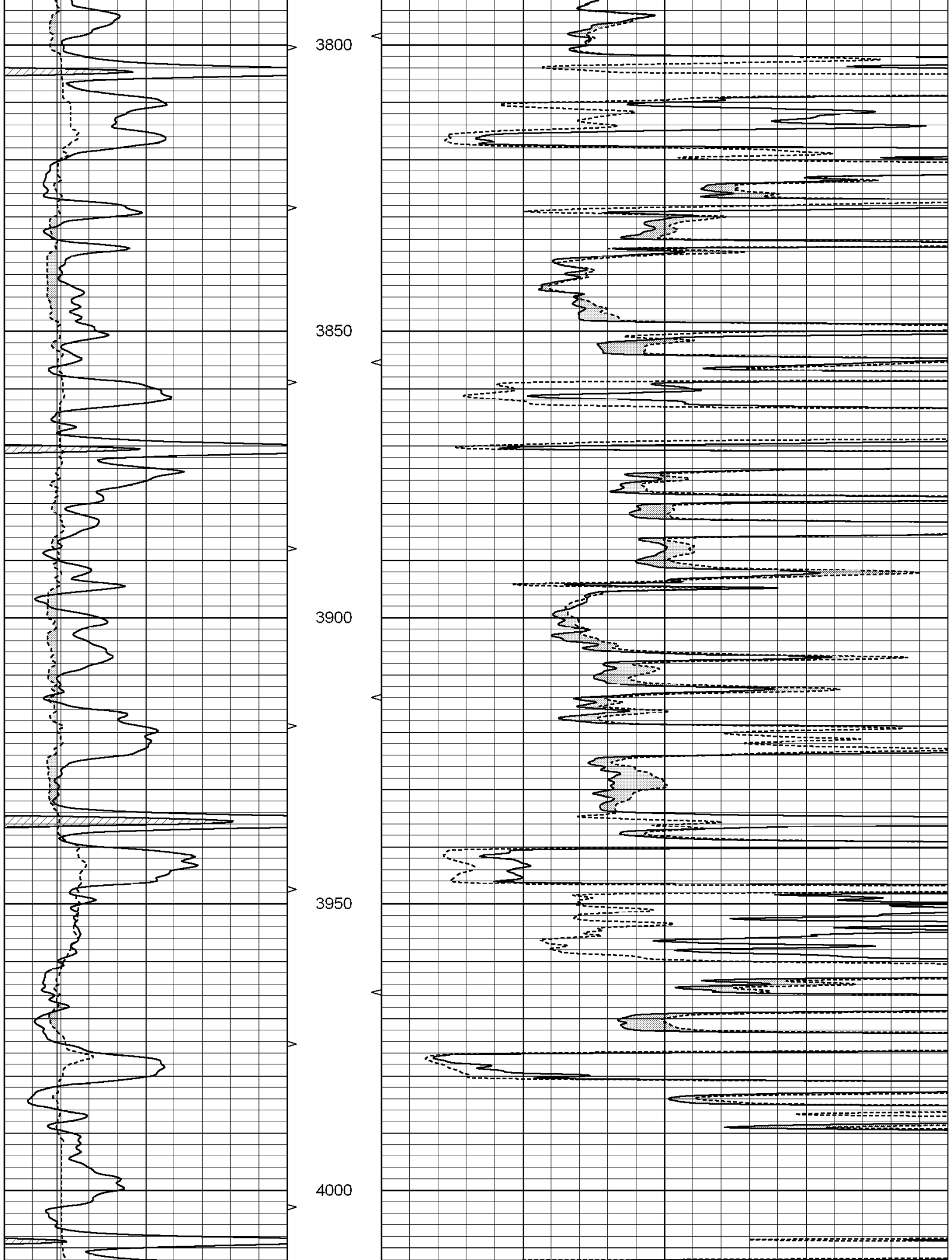


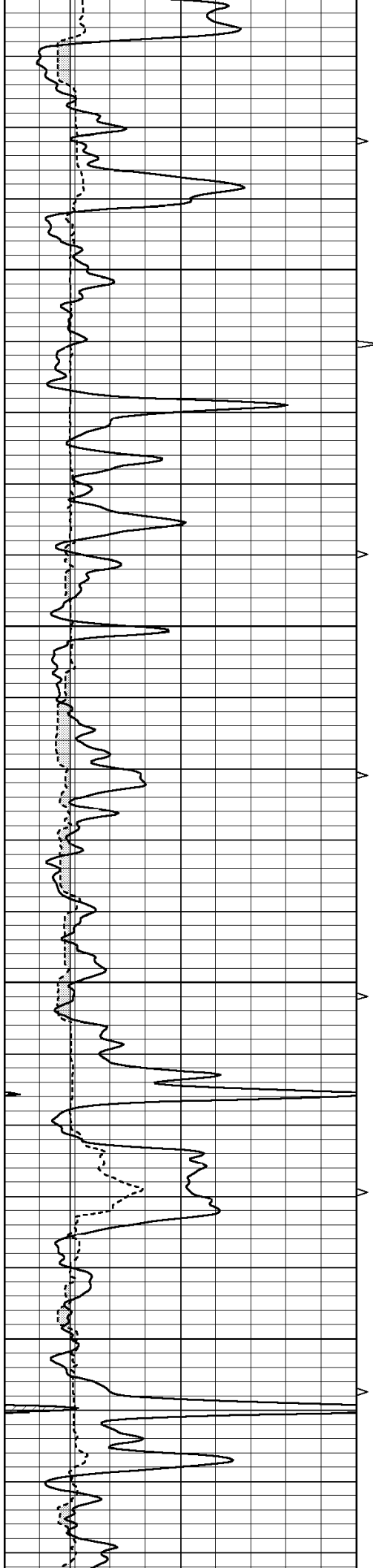










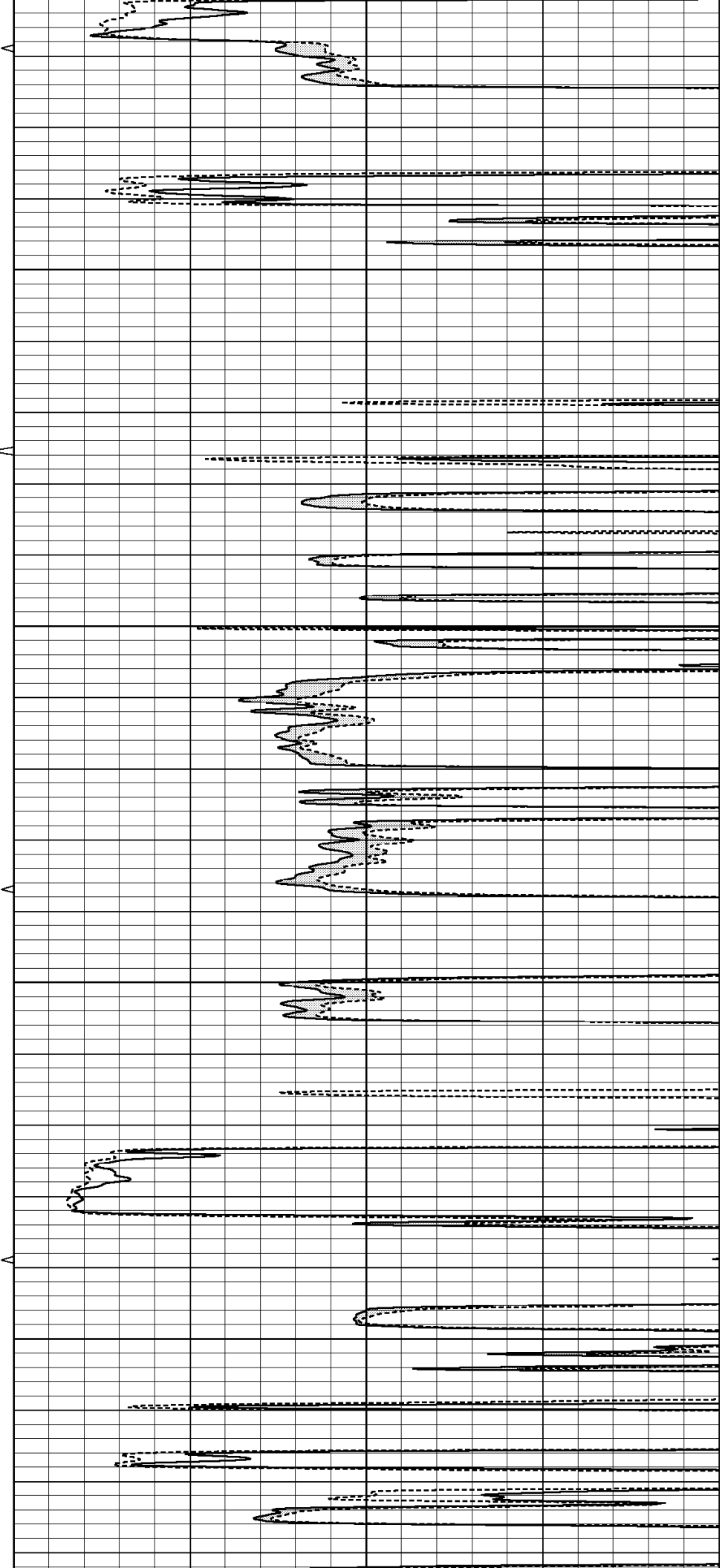


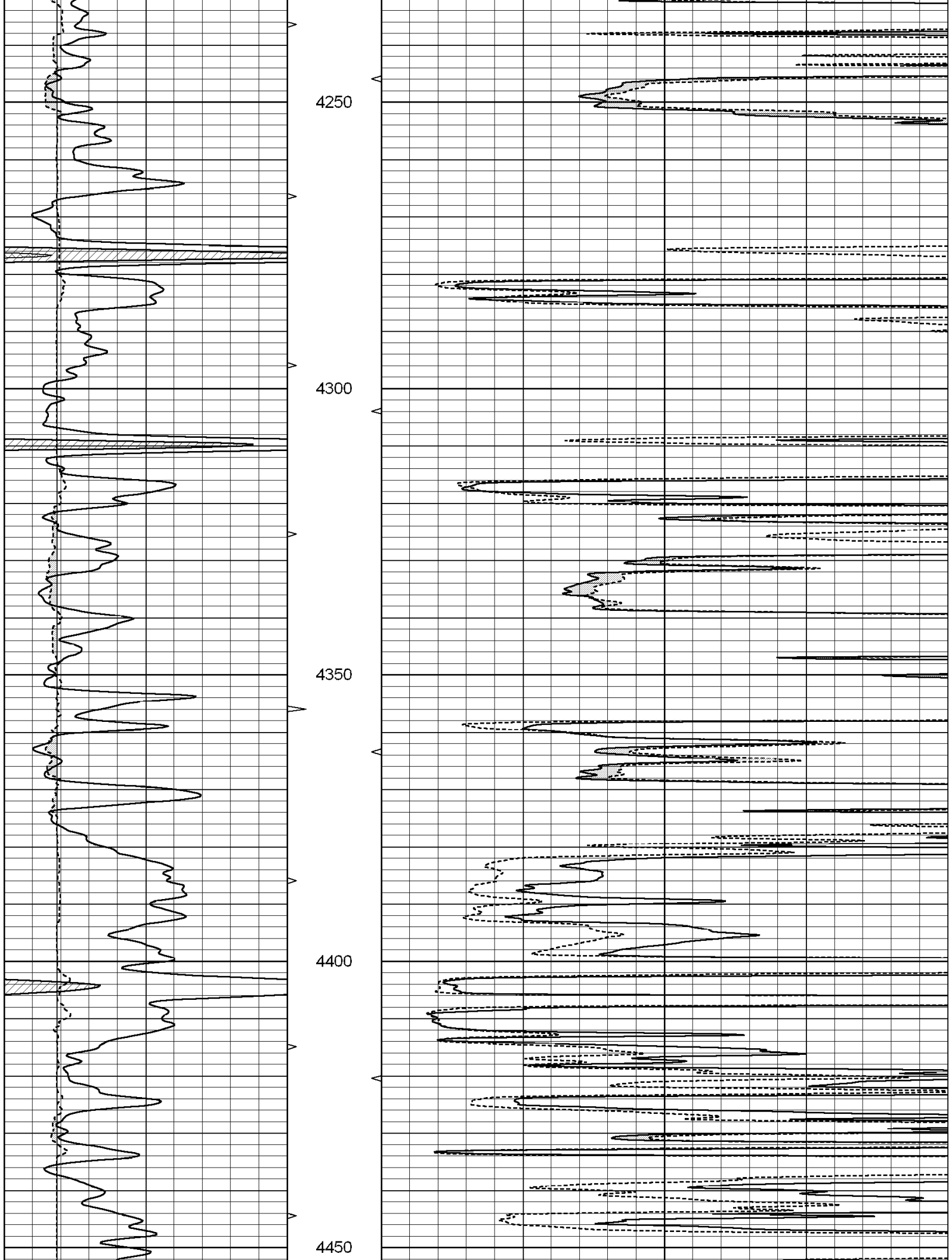
4050

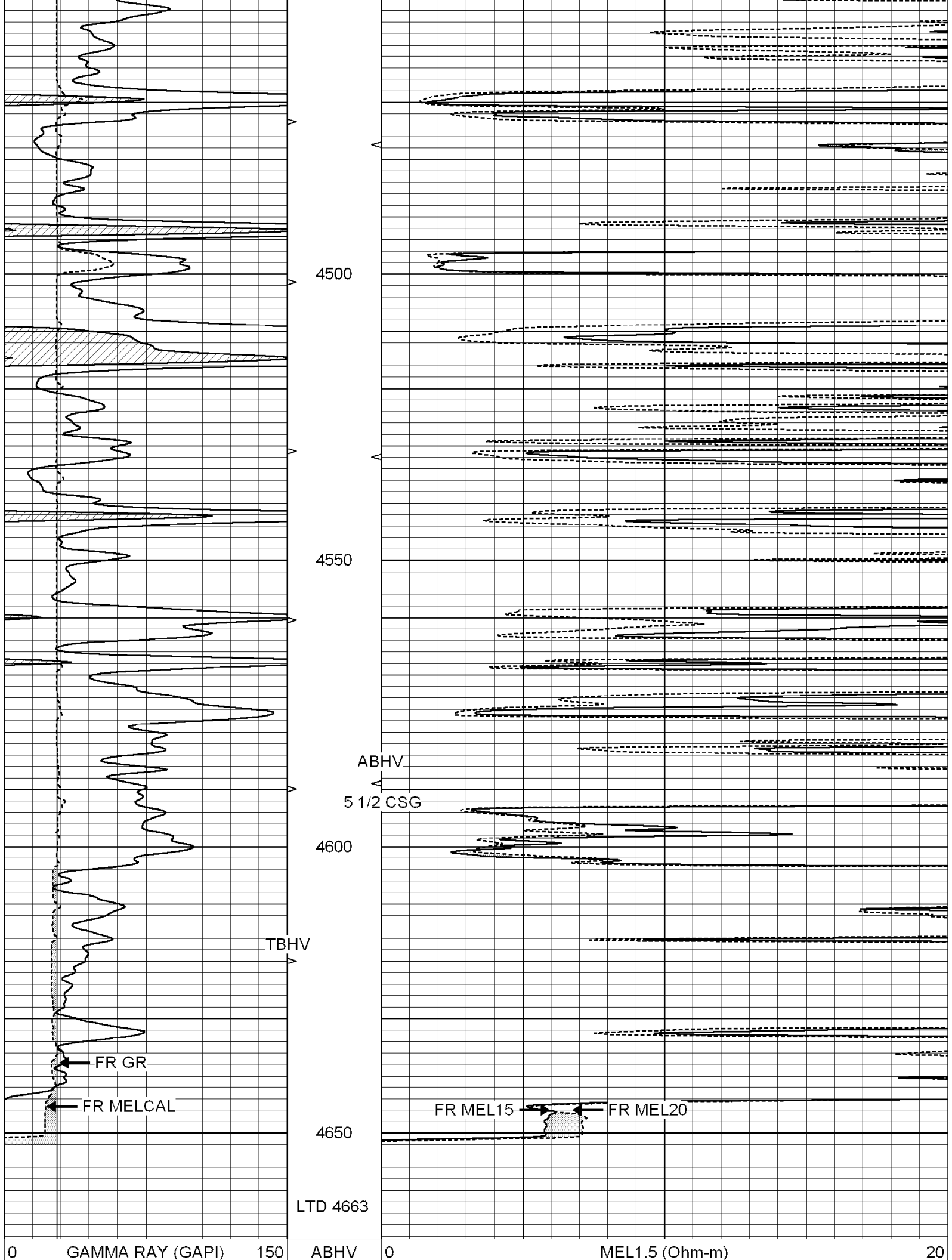
4100

4150

4200







6	CALIPER (in)	16	10 (ft3)	0 0	MEL2.0 (Ohm-m)	20
		TBHV				
		0 (ft3)		10		

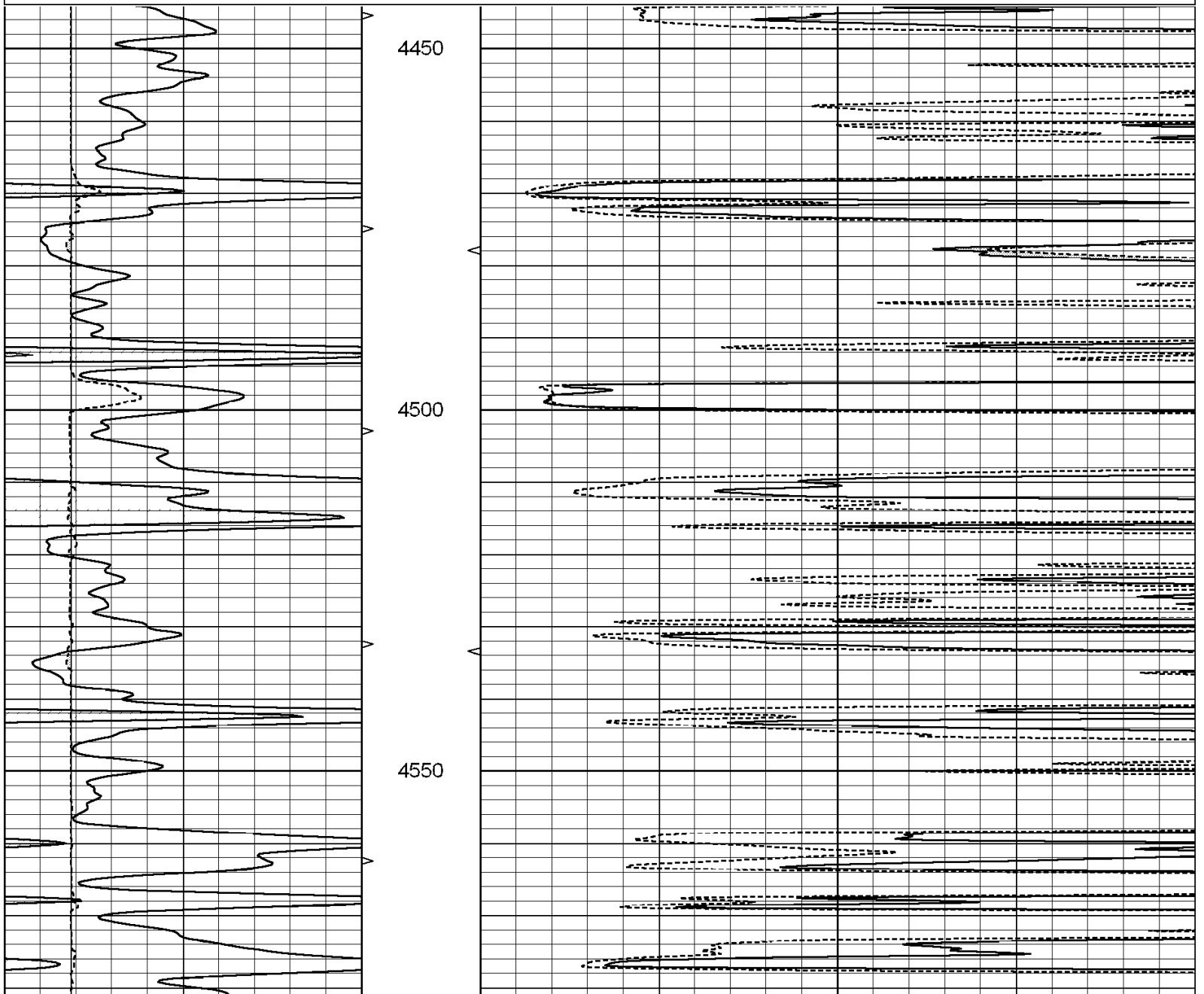


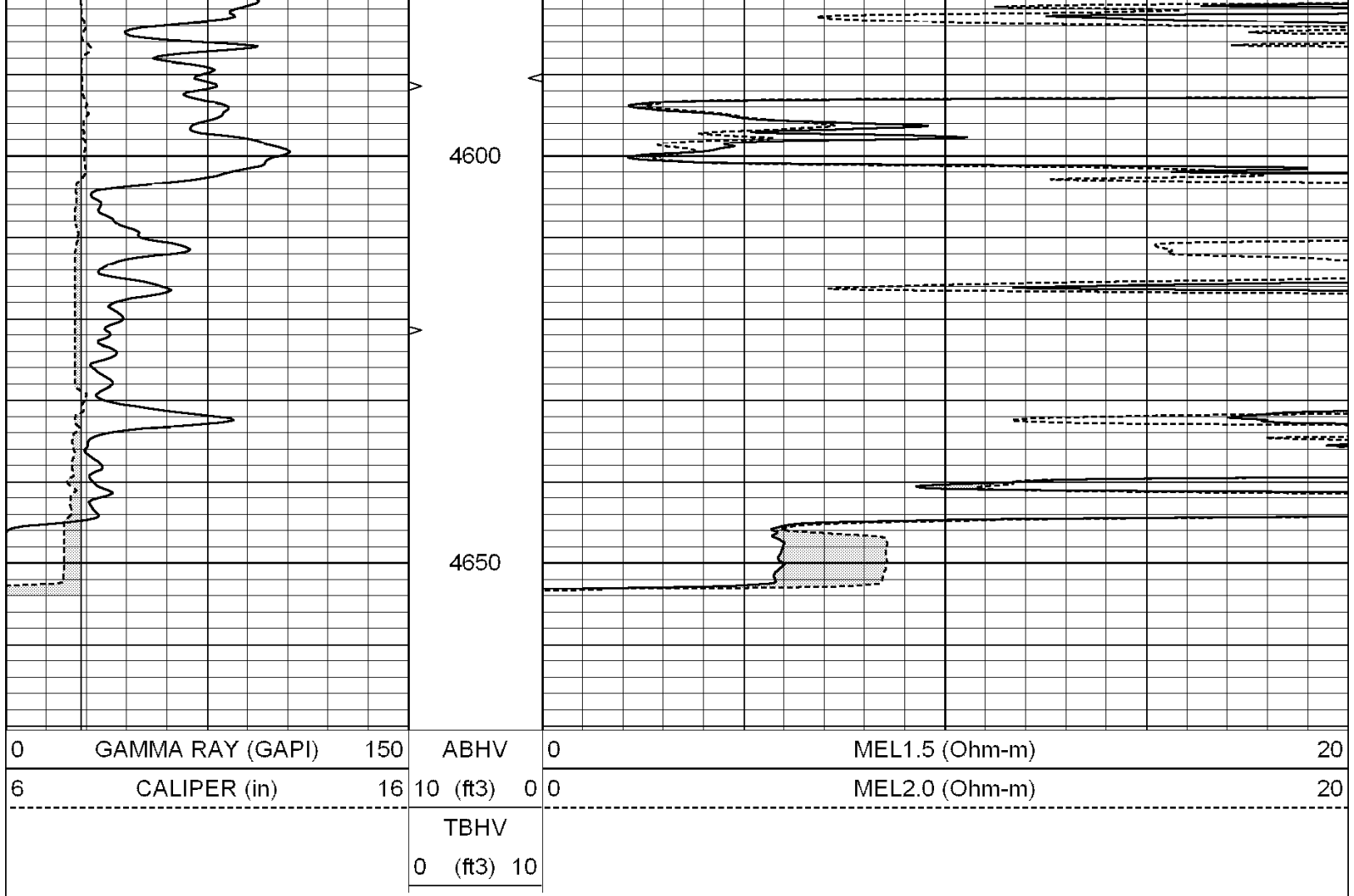
SUPERIOR  
Hays,  
Kansas

# REPEAT SECTION

Database File: 003072ddn.db  
 Dataset Pathname: pass5.1  
 Presentation Format: \_micro  
 Dataset Creation: Thu Feb 26 21:56:46 2009 by Calc Open-Cased 070814  
 Charted by: Depth in Feet scaled 1:240

0	GAMMA RAY (GAPI)	150	ABHV	0	MEL1.5 (Ohm-m)	20
6	CALIPER (in)	16	10 (ft3)	0 0	MEL2.0 (Ohm-m)	20
		TBHV				
		0 (ft3)		10		





### Calibration Report

Database File: 003072ddn.db  
 Dataset Pathname: pass6.1  
 Dataset Creation: Thu Feb 26 22:44:11 2009 by Calc Open-Cased 070814

### MICRO Calibration Report

Serial Number:	MICRO3	
Tool Model:	PROBE	
Performed:	Thu Feb 12 08:25:58 2009	
 Caliper Calibration:	Gain=2.969	Offset=-2.855
References	Low Cal	High Cal
Readings	8.375	13.250
	3.395	5.037
 1.5" Calibration:	Gain=151.940	Offset=-1.525
References	Low Cal	High Cal
Readings	0.000	20.000
	0.006	0.223
 2" Calibration:	Gain=119.050	Offset=-1.099
References	Low Cal	High Cal
Readings	0.000	20.000
	0.009	0.177

### Gamma Ray Calibration Report

Serial Number: GR6

Tool Model: OPEN  
Performed: Fri Feb 13 12:30:39 2009

Calibrator Value: 150.0 GAPI

Background Reading: 0.0 cps  
Calibrator Reading: 276.0 cps

Sensitivity: 0.5435 GAPI/cps