



**SUPERIOR**  
Hays,  
Kansas

**COMPENSATED  
DENSITY/NEUTRON  
LOG**

Company ABARTA OIL & GAS CO. INC.  
Well ANCHOR CATTLE #1  
Field CLARK  
County LANE  
State KANSAS

Company ABARTA OIL AND GAS COMPANY INC.  
Well ANCHOR CATTLE #1  
Field CLARK  
County LANE State KANSAS

Location: API #: 15-101-22154-0000  
1712'FSL & 830'FWL  
NW-SE-NW-SW  
SEC 18 TWP 19S RGE 29W  
Permanent Datum GROUND LEVEL Elevation 2857  
Log Measured From KELLY BUSHING 5' A.G.L.  
Drilling Measured From KELLY BUSHING  
Other Services  
DIL  
MEL/SONIC  
Elevation  
K.B. 2862  
D.F. 2860  
G.L. 2857

Date	26 FEB 09
Run Number	ONE
Depth Driller	4663
Depth Logger	4663
Bottom Logged Interval	4639
Top Log Interval	2500
Casing Driller	8 5/8 @ 349'
Casing Logger	348'
Bit Size	7 7/8
Type Fluid In Hole	CHEMICAL
Density / Viscosity	9.4/48
pH / Fluid Loss	9.3/8.8
Source of Sample	FLOWLINE
Rm @ Meas. Temp	1.35 @ 77F
Rmf @ Meas. Temp	1.01 @ 77F
Rmc @ Meas. Temp	1.62 @ 77F
Source of Rmf / Rmc	CAL/CAL
Rm @ BHT	0.85 @ 122F
Time Circulation Stopped	2 HOURS
Time Logger on Bottom	7:00 PM
Maximum Recorded Temperature	122F
Equipment Number	680
Location	HAYS, KS
Recorded By	JEFF GRONEWEG
Witnessed By	SCOTT ALBERG
	JOE CRATHORNE

<<< Fold Here >>>

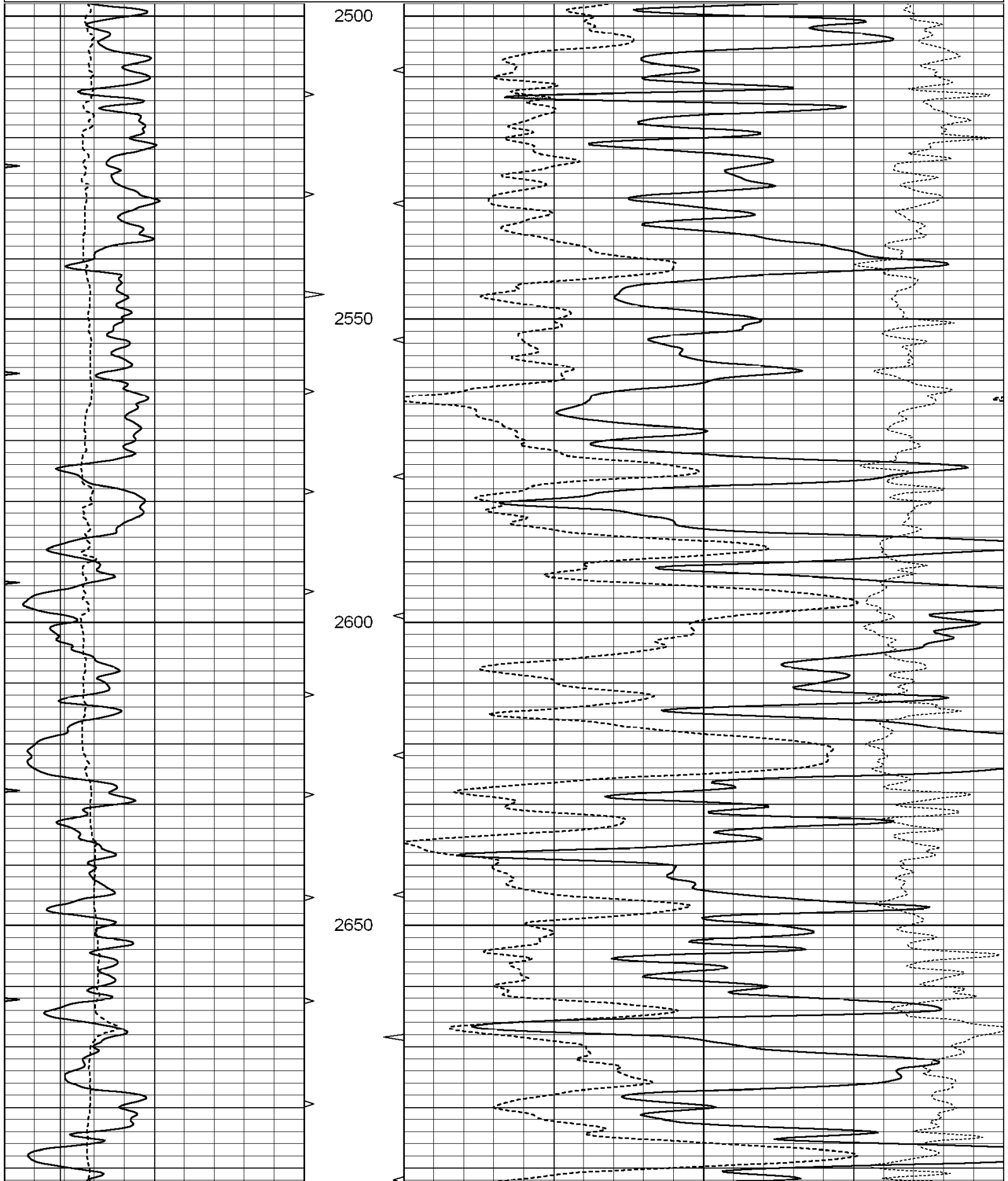
All interpretations are opinions based on inferences from electrical or other measurements and we cannot and do not guarantee the accuracy or correctness of any interpretation, and we shall not, except in the case of gross or willful negligence on our part, be liable or responsible for any loss, costs, damages, or expenses incurred or sustained by anyone resulting from any interpretation made by any of our officers, agents or employees. These interpretations are also subject to our general terms and conditions set out in our current Price Schedule.

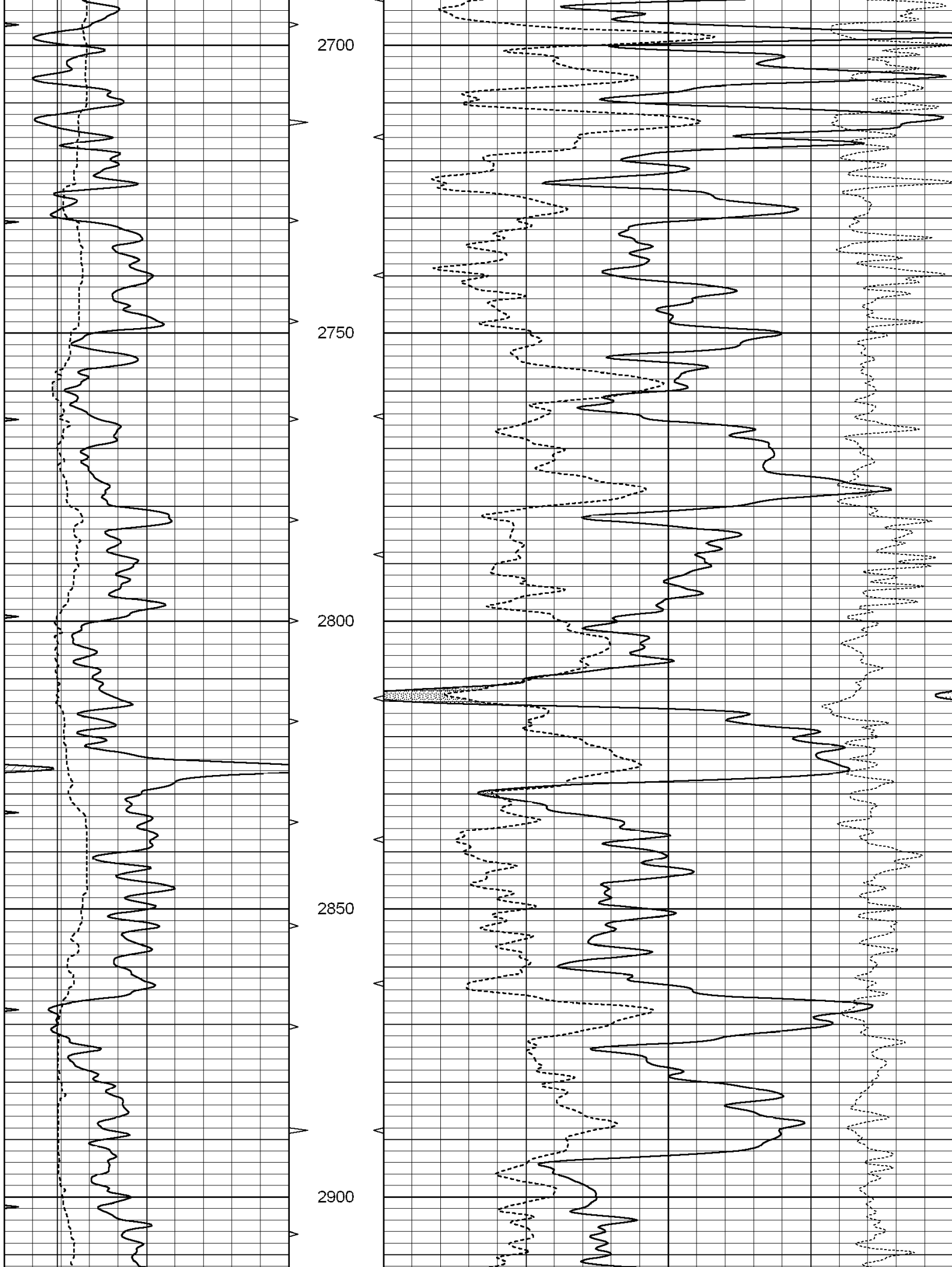
**Comments**

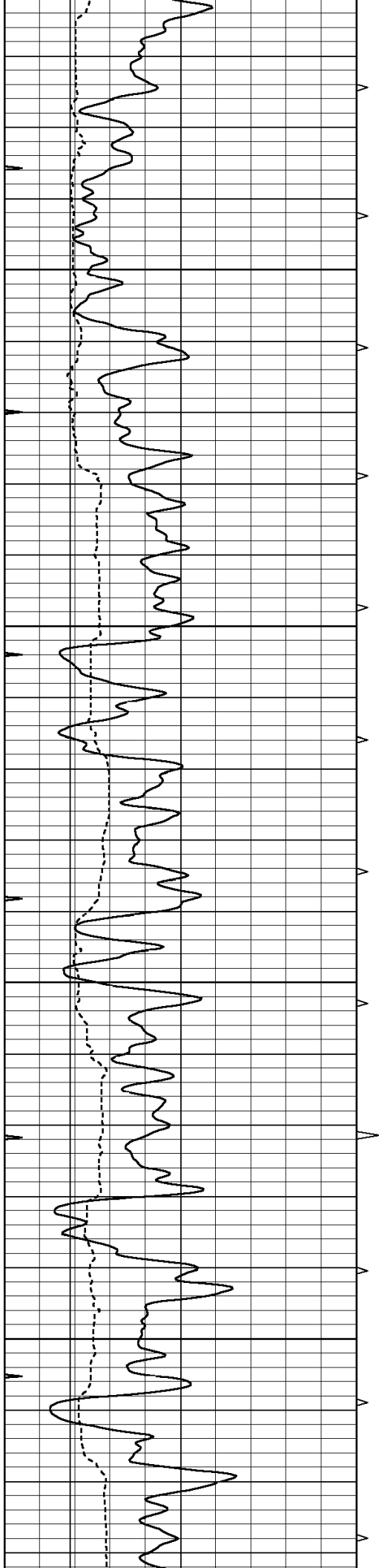
THANK YOU FOR USING SUPERIOR WELL SERVICES  
HAYS, KS. 785-628-6395

DIRECTIONS: DIGHTON; 6 MILES SOUTH ON HWY 23 TO RD 90, 6 MILES WEST, NORTH INTO

0	GAMMA RAY (GAPI)	150	ABHV	30	COMPENSATED DENSITY (pu)	-10
6	CALIPER (in)	16	10 (ft3)	0 30	COMPENSATED NEUTRON (pu)	-10
0	MINMK	20	TBHV		-0.25 CORRECTION (g/cc)	0.25
			0 (ft3)	10		





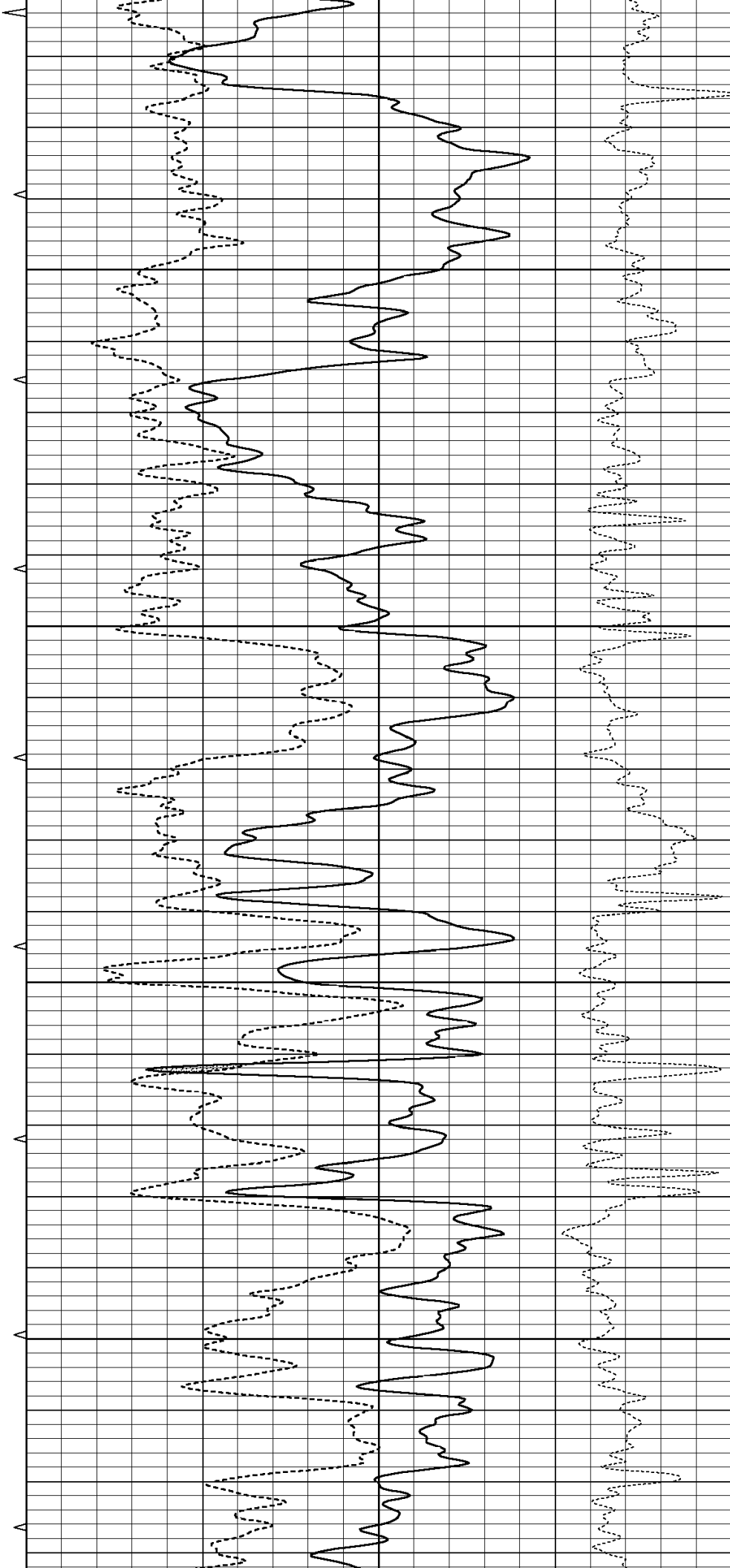


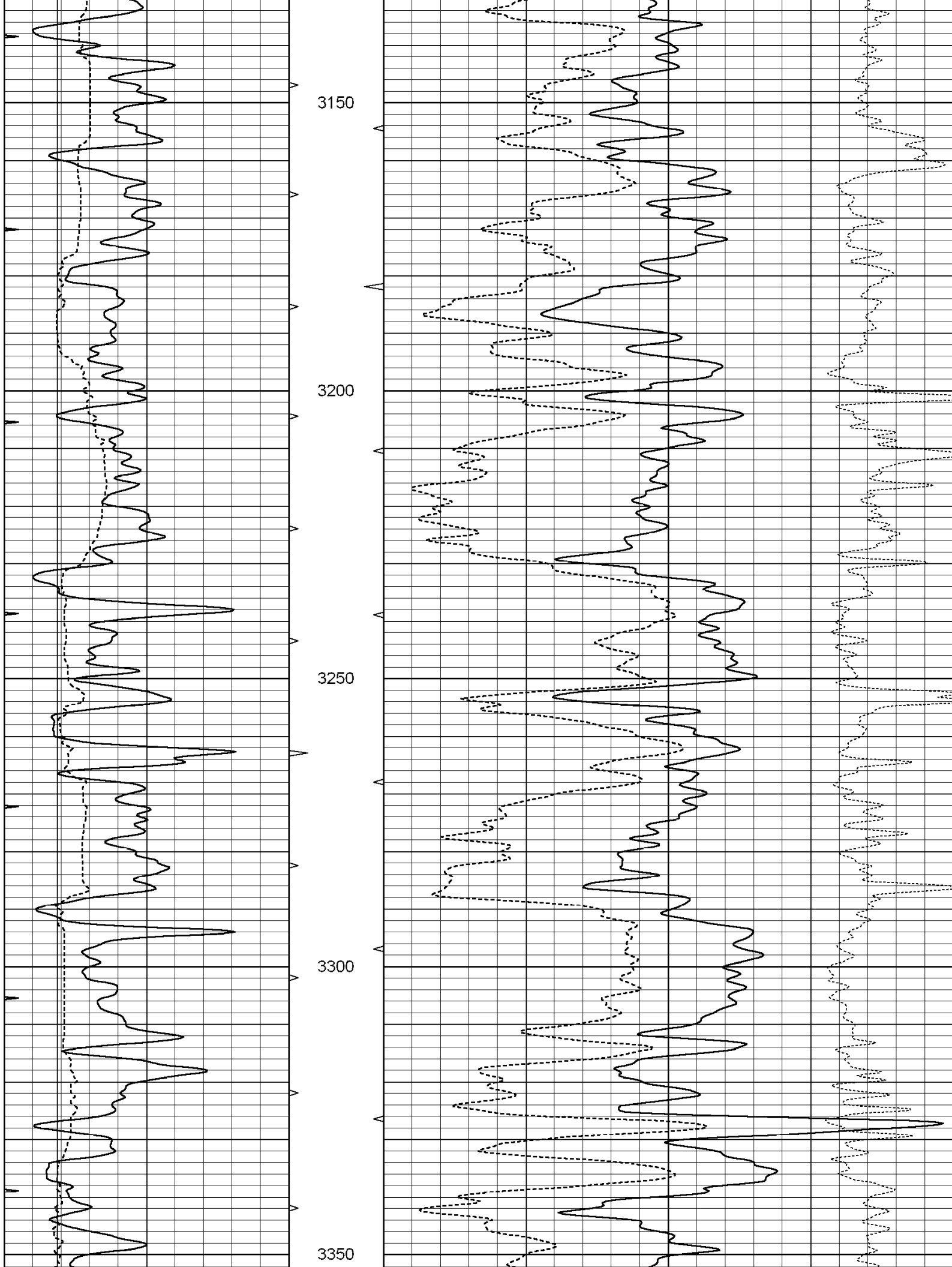
2950

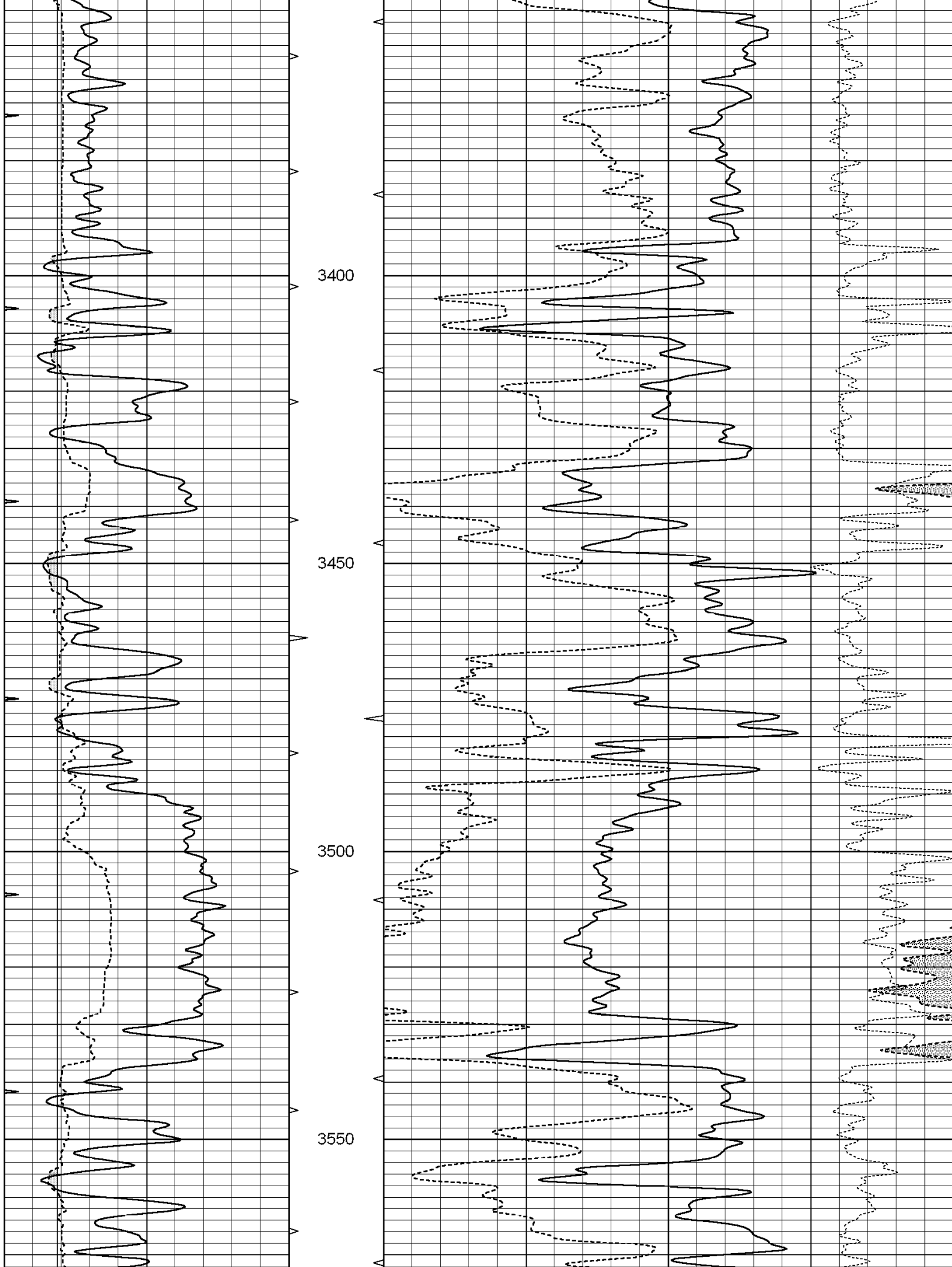
3000

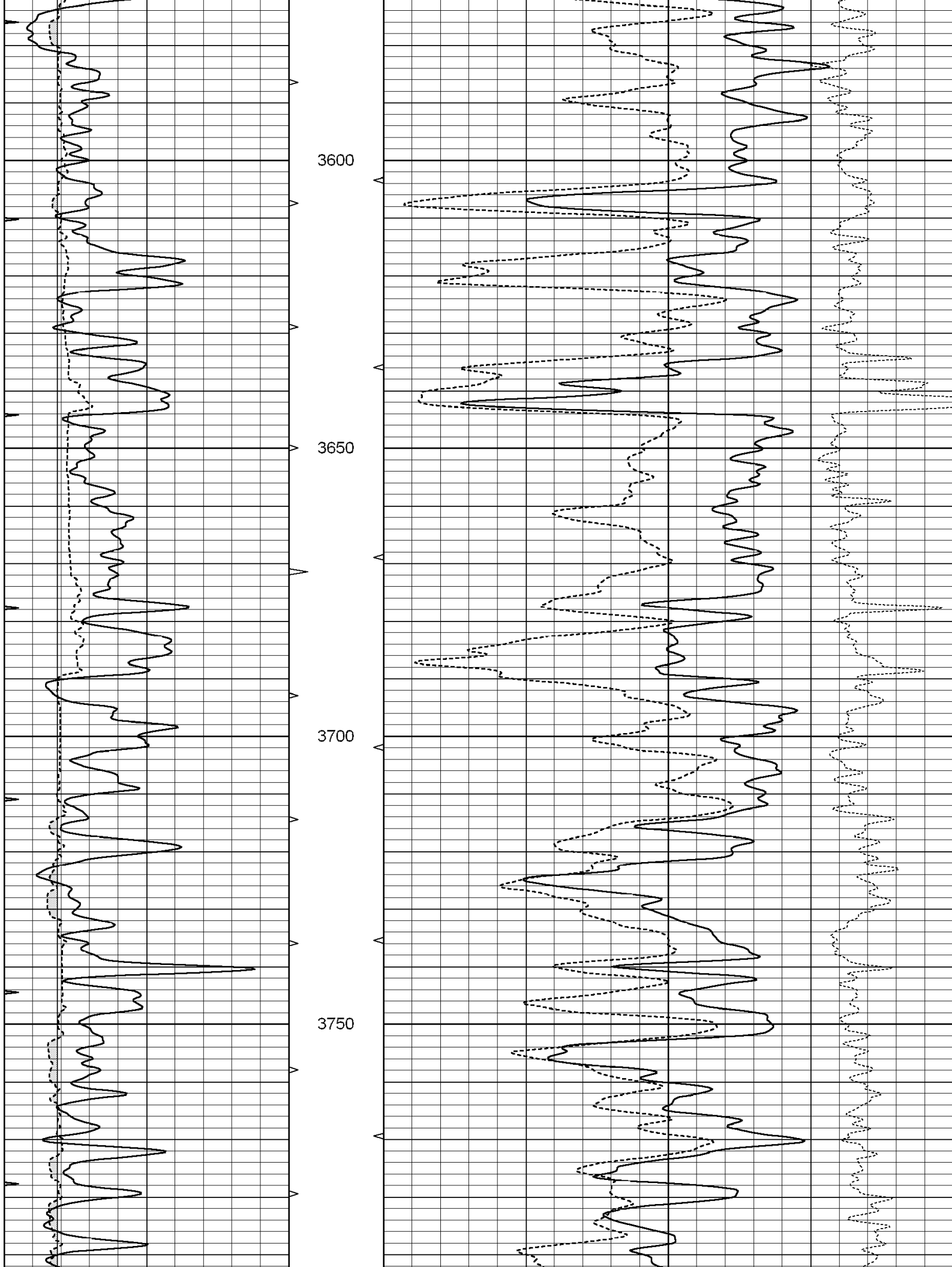
3050

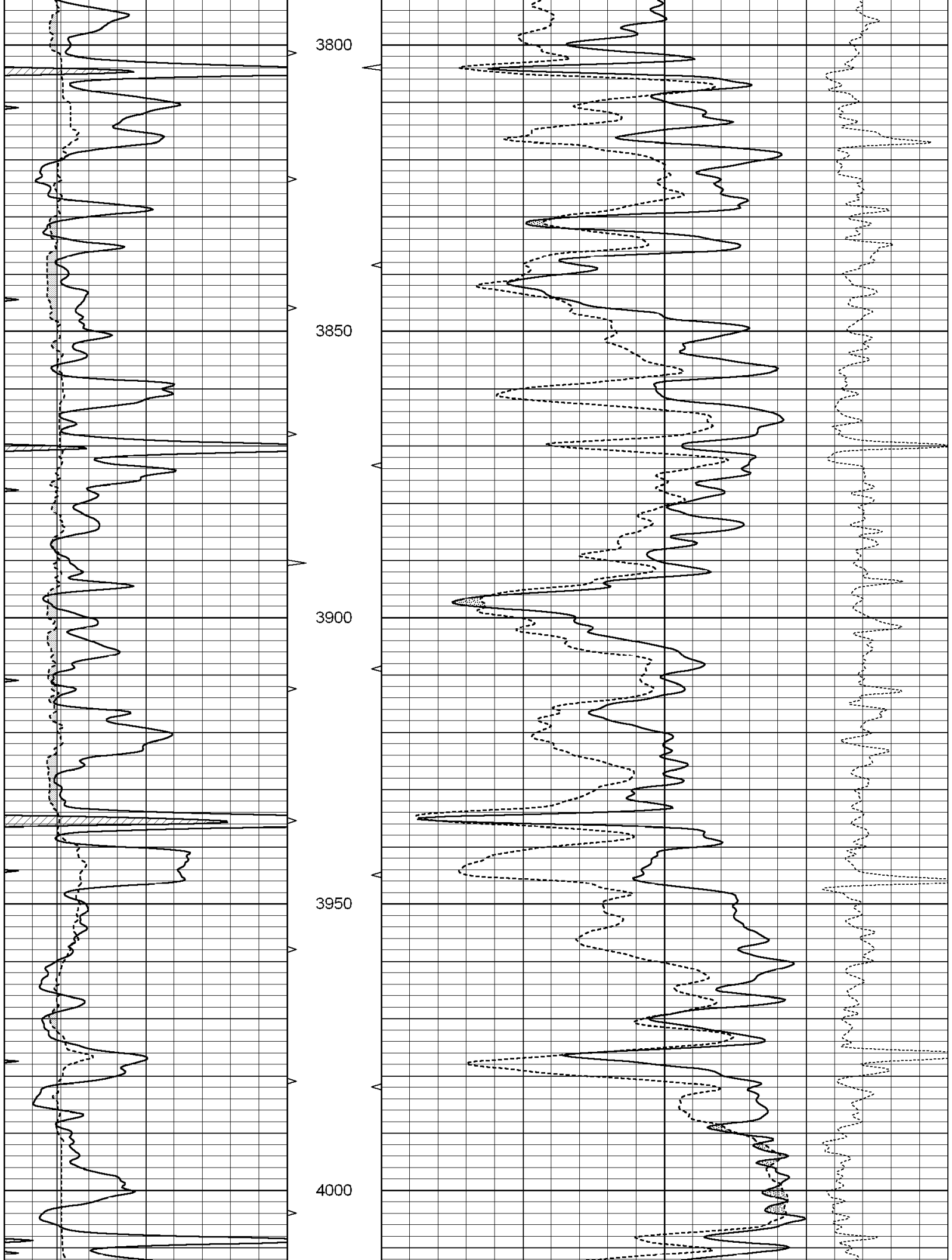
3100

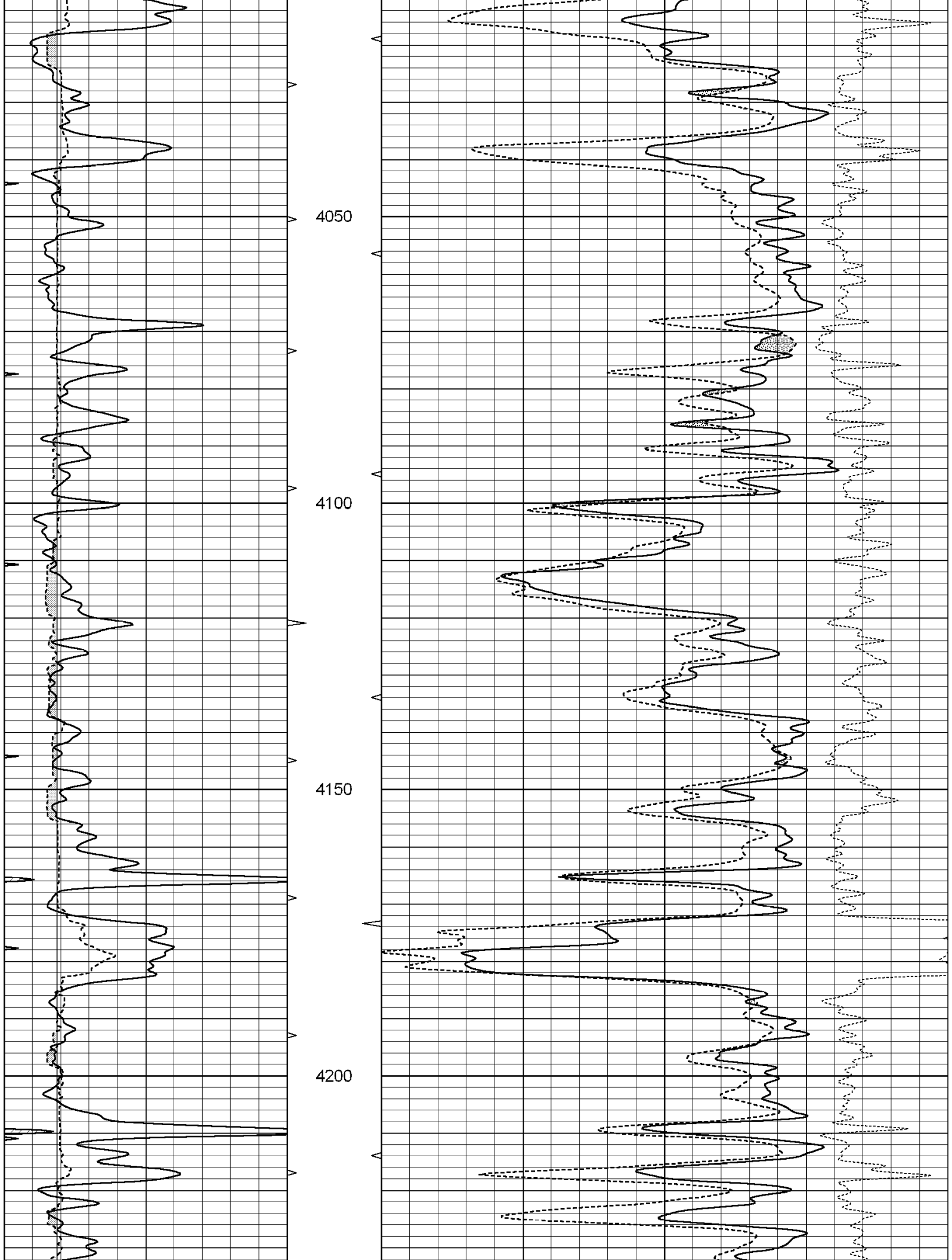


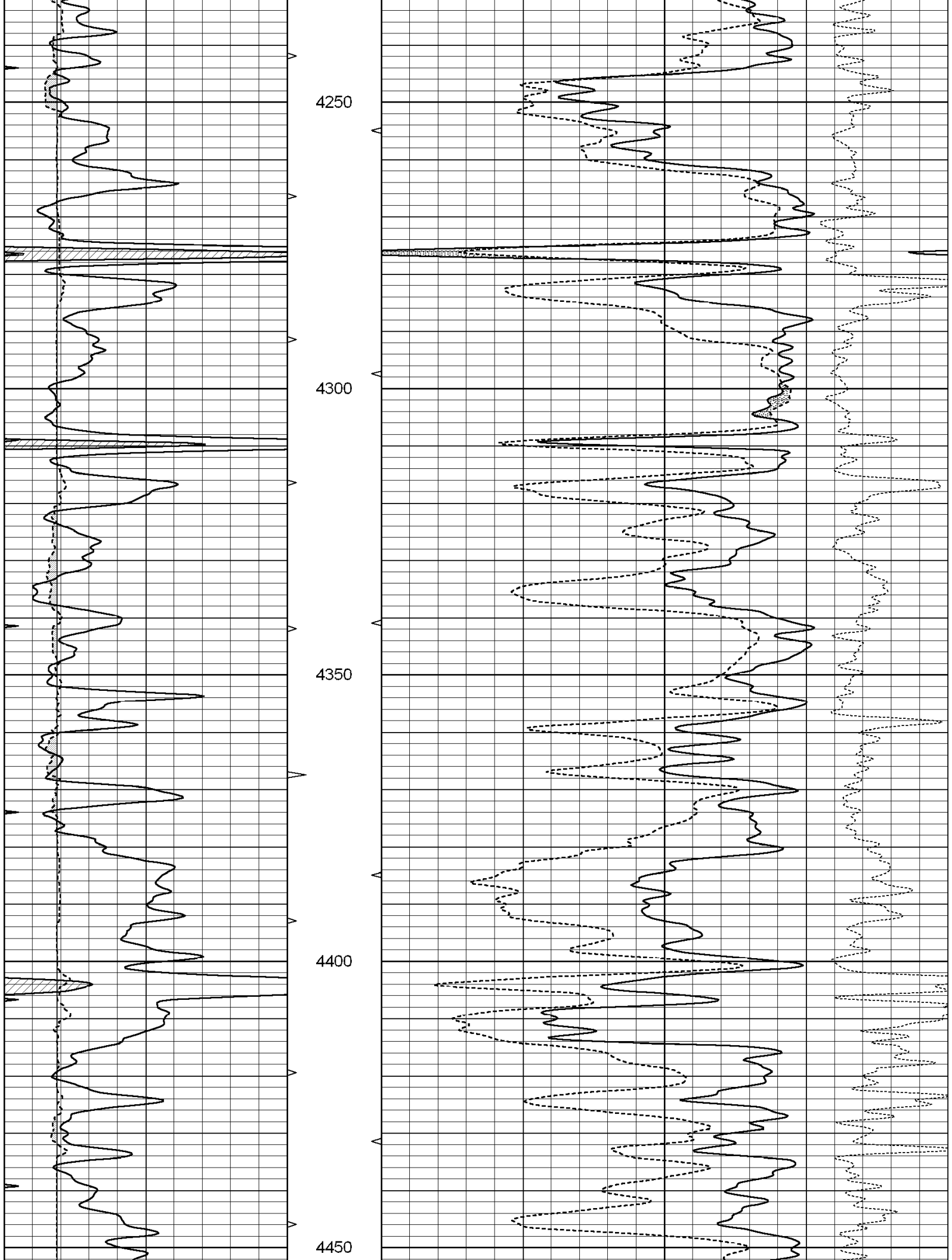


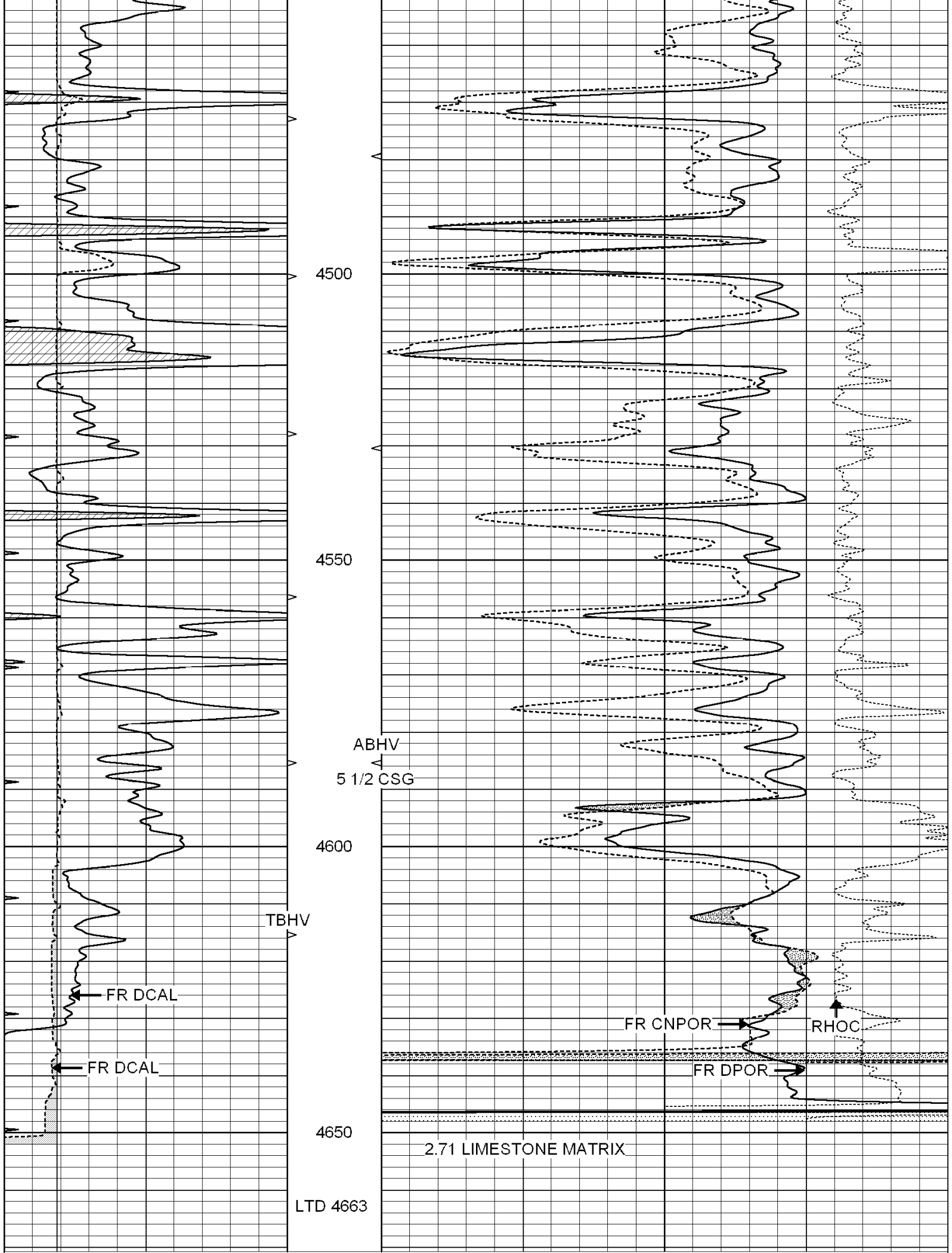












4500

4550

ABHV

5 1/2 CSG

4600

TBHV

FR DCAL

FR DCAL

FR CNPOR

RHOC

FR DPOR

4650

2.71 LIMESTONE MATRIX

LTD 4663

0	GAMMA RAY (GAPI)	150	ABHV	30	COMPENSATED DENSITY (pu)	-10	
6	CALIPER (in)	16	10 (ft3)	0	30	COMPENSATED NEUTRON (pu)	-10
0	MINMK	20	TBHV			-0.25 CORRECTION (g/cc)	0.25
			0 (ft3)	10			

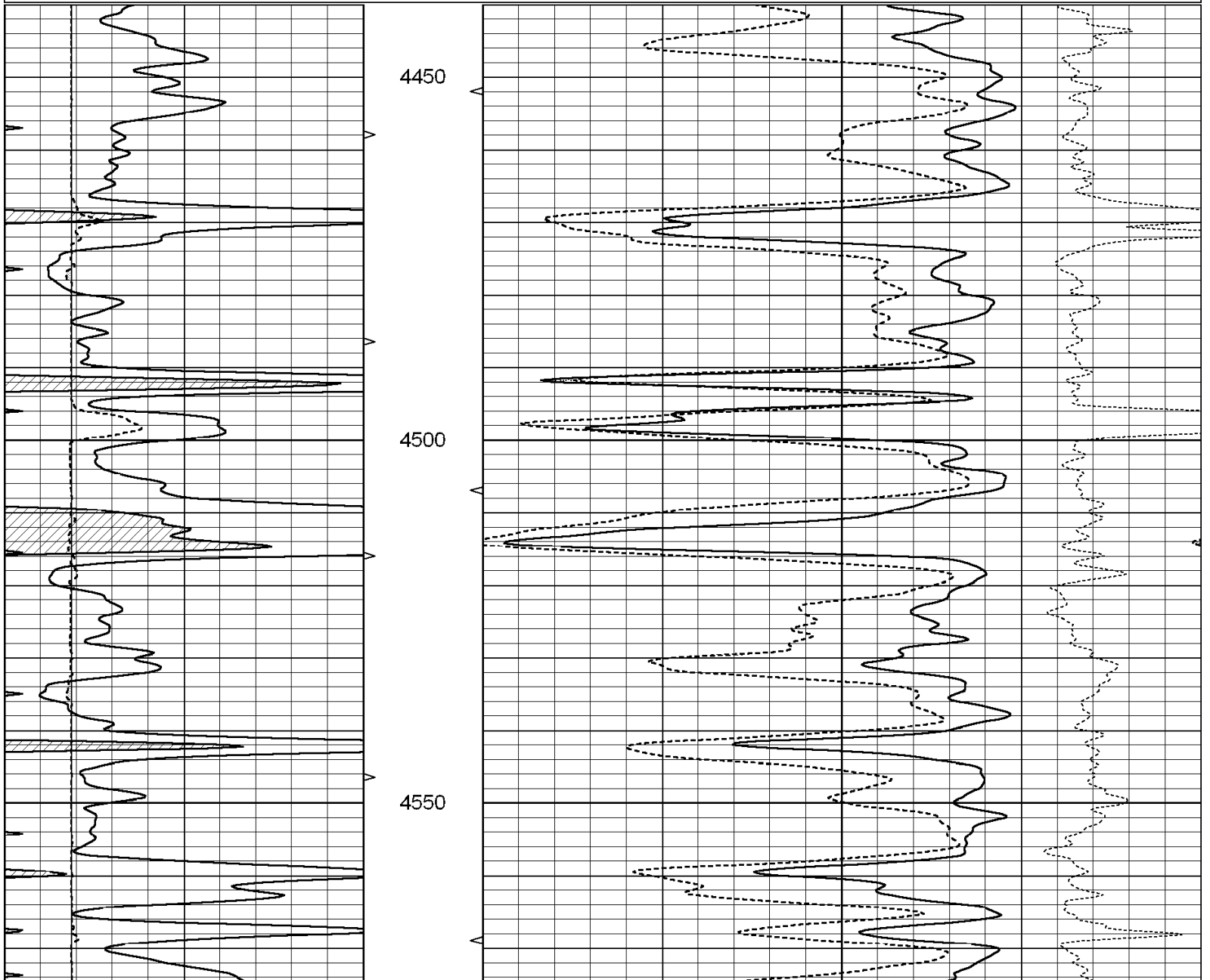


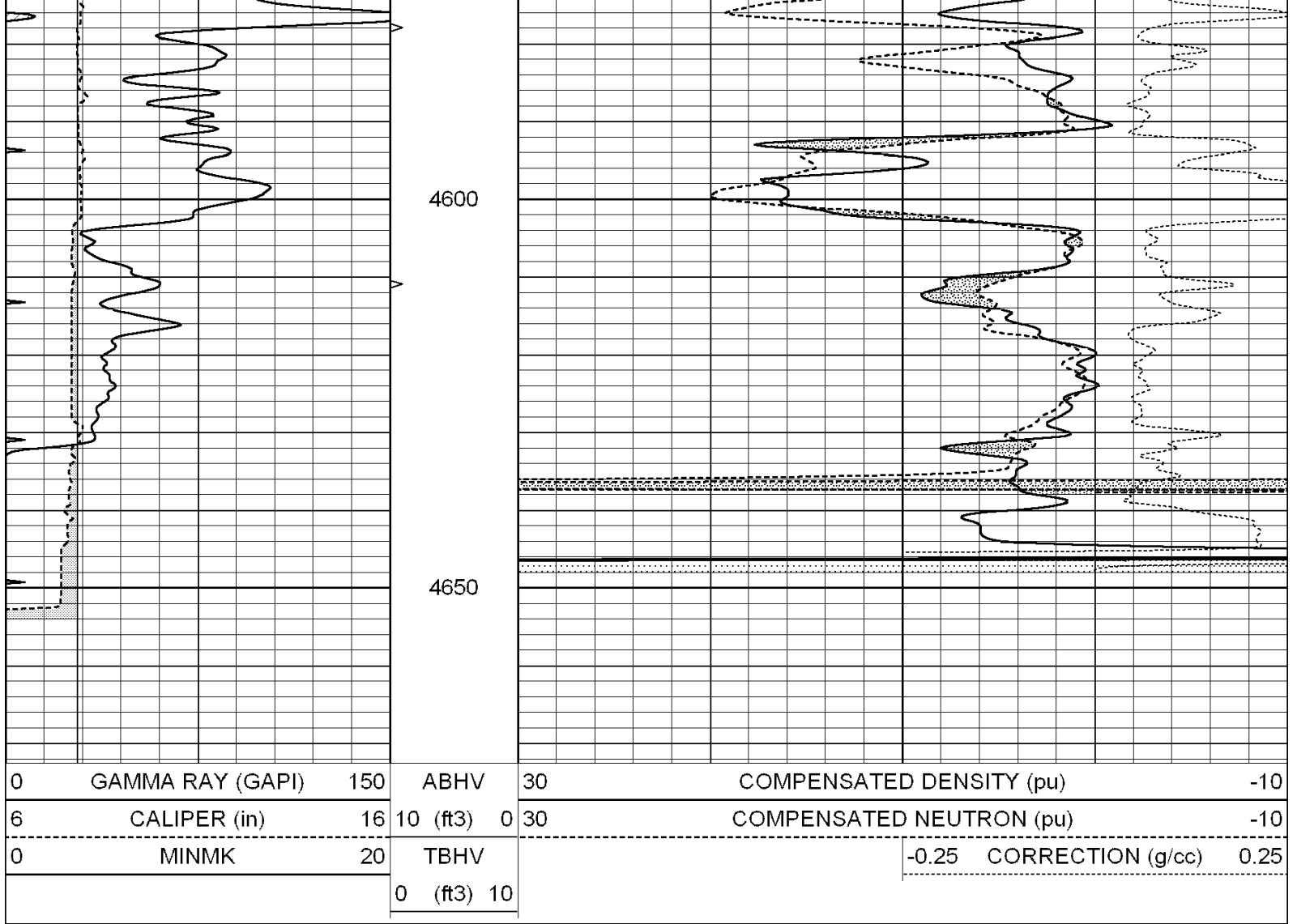
SUPERIOR  
Hays,  
Kansas

# REPEAT SECTION

Database File: 003072ddn.db  
 Dataset Pathname: passRPCDL  
 Presentation Format: \_den\_neu  
 Dataset Creation: Thu Feb 26 22:16:57 2009  
 Charted by: Depth in Feet scaled 1:240

0	GAMMA RAY (GAPI)	150	ABHV	30	COMPENSATED DENSITY (pu)	-10	
6	CALIPER (in)	16	10 (ft3)	0	30	COMPENSATED NEUTRON (pu)	-10
0	MINMK	20	TBHV			-0.25 CORRECTION (g/cc)	0.25
			0 (ft3)	10			





### Calibration Report

Database File: 003072ddn.db  
 Dataset Pathname: pass3  
 Dataset Creation: Thu Feb 26 19:21:40 2009 by Log Open-Cased 070814

### Dual Induction Calibration Report

Serial-Model: PROBE8-DILG  
 Surface Cal Performed: Fri Aug 01 06:33:19 2008  
 Downhole Cal Performed: Mon Jul 28 11:08:27 2008  
 After Survey Verification Performed: Mon Jul 28 11:08:27 2008

#### Surface Calibration

Loop:	Readings				References		Results	
	Air	Loop			Air	Loop	m	b
Deep	0.015	0.648	V	0.000	400.000	mmho-m	632.616	-9.730
Medium	0.029	0.796	V	0.000	464.000	mmho-m	605.049	-17.680
Internal:	Zero	Cal		Zero	Cal		m	b
Deep	0.017	0.657	V	0.000	400.000	mmho-m	625.153	-10.619
Medium	0.016	0.757	V	0.000	464.000	mmho-m	625.992	-9.739

#### Downhole Calibration

Readings			References		Results	
Zero	Cal		Zero	Cal	m'	b'

Deep	0.000	0.000	mmho-m	2.011	405.777	mmho-m	1.000	0.000
Medium	0.000	0.000	mmho-m	7.590	503.393	mmho-m	1.000	0.000
LL3		7.500	V		1500.000	Ohm-m		
		0.000	V		20.000	Ohm-m		
		-6.500	V		3500.000	mmho-m		

After Survey Verification

	Readings			Targets			Results	
	Zero	Cal		Zero	Cal		m'	b'
Deep	0.000	0.000	mmho-m	0.000	0.000	mmho-m	0.000	0.000
Medium	0.000	0.000	mmho-m	0.000	0.000	mmho-m	0.000	0.000
LL3		1.000	Ohm-m		1.000	Ohm-m		
		0.000	Ohm-m		0.000	Ohm-m		
		1.000	mmho-m		1.000	mmho-m		

Compensated Density Calibration Report

Serial-Model: GEAR3-GEARHART  
 Source / Verifier: 143 / 143  
 Master Calibration Performed: Wed Nov 14 12:49:27 2007

Master Calibration

	Density		Far Detector	Near Detector	
Magnesium	1.710	g/cc	1141.54	430.65	cps
Aluminum	2.590	g/cc	254.90	298.41	cps
Spine Angle = 76.25			Density/Spine Ratio = 0.570		
	Size		Reading		
Small Ring	8.00	in	4.96	V	
Large Ring	14.00	in	7.56	V	

Compensated Neutron Calibration Report

Serial Number: 6I  
 Tool Model: G

CALIBRATION

Detector	Readings		Target		Normalization
Short Space	1.00	cps	1.00	cps	1.0000
Long Space	1.00	cps	1.00	cps	1.0000

Gamma Ray Calibration Report

Serial Number: GR6  
 Tool Model: OPEN  
 Performed: Fri Feb 13 12:30:39 2009

Calibrator Value: 150.0 GAPI

Background Reading: 0.0 cps  
 Calibrator Reading: 276.0 cps

Sensitivity: 0.5435 GAPI/cps